

Framingham
Fuller Middle School

School Building Committee February 4, 2019



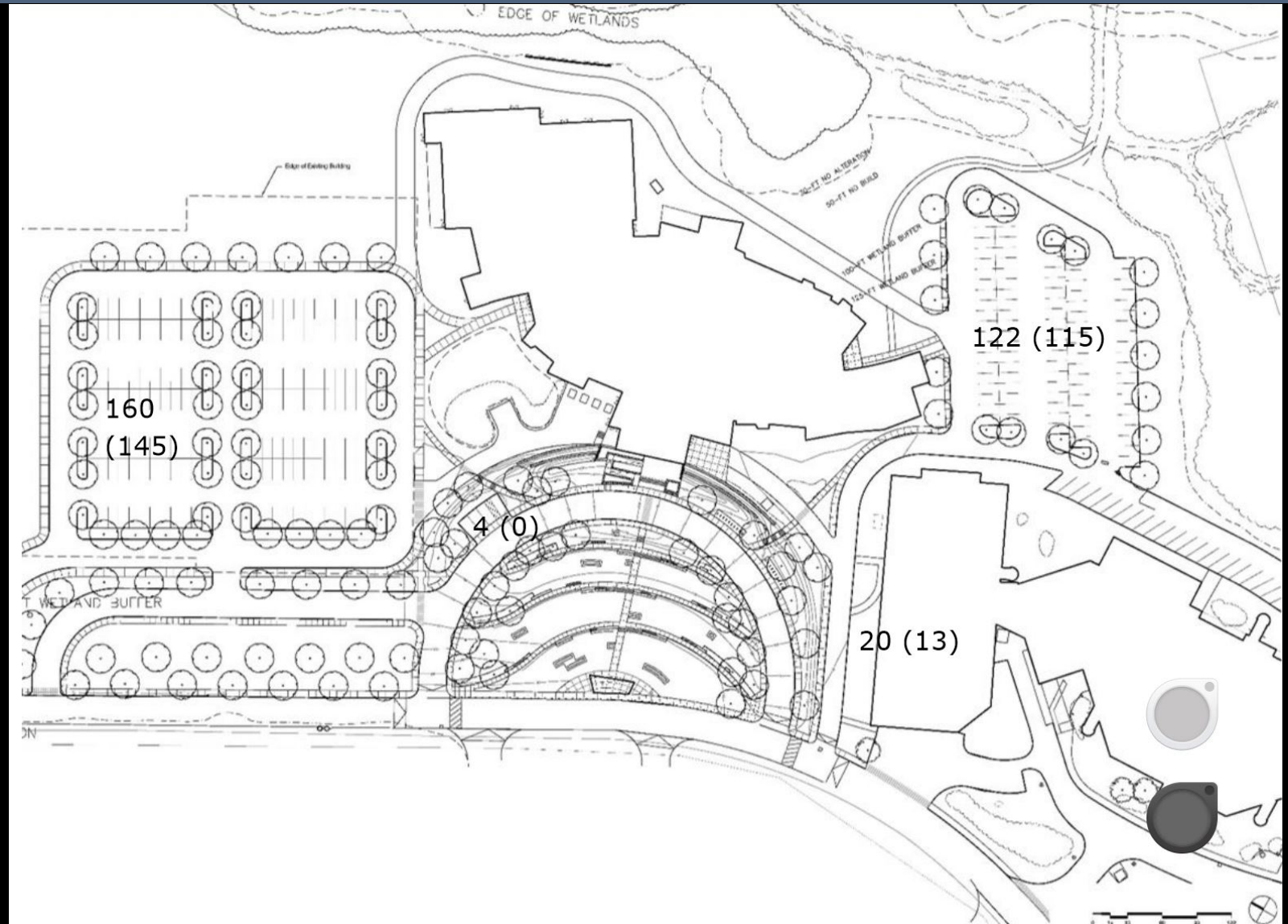
Jonathan Levi Architects

FULLER SCHOOL, FRAMINGHAM

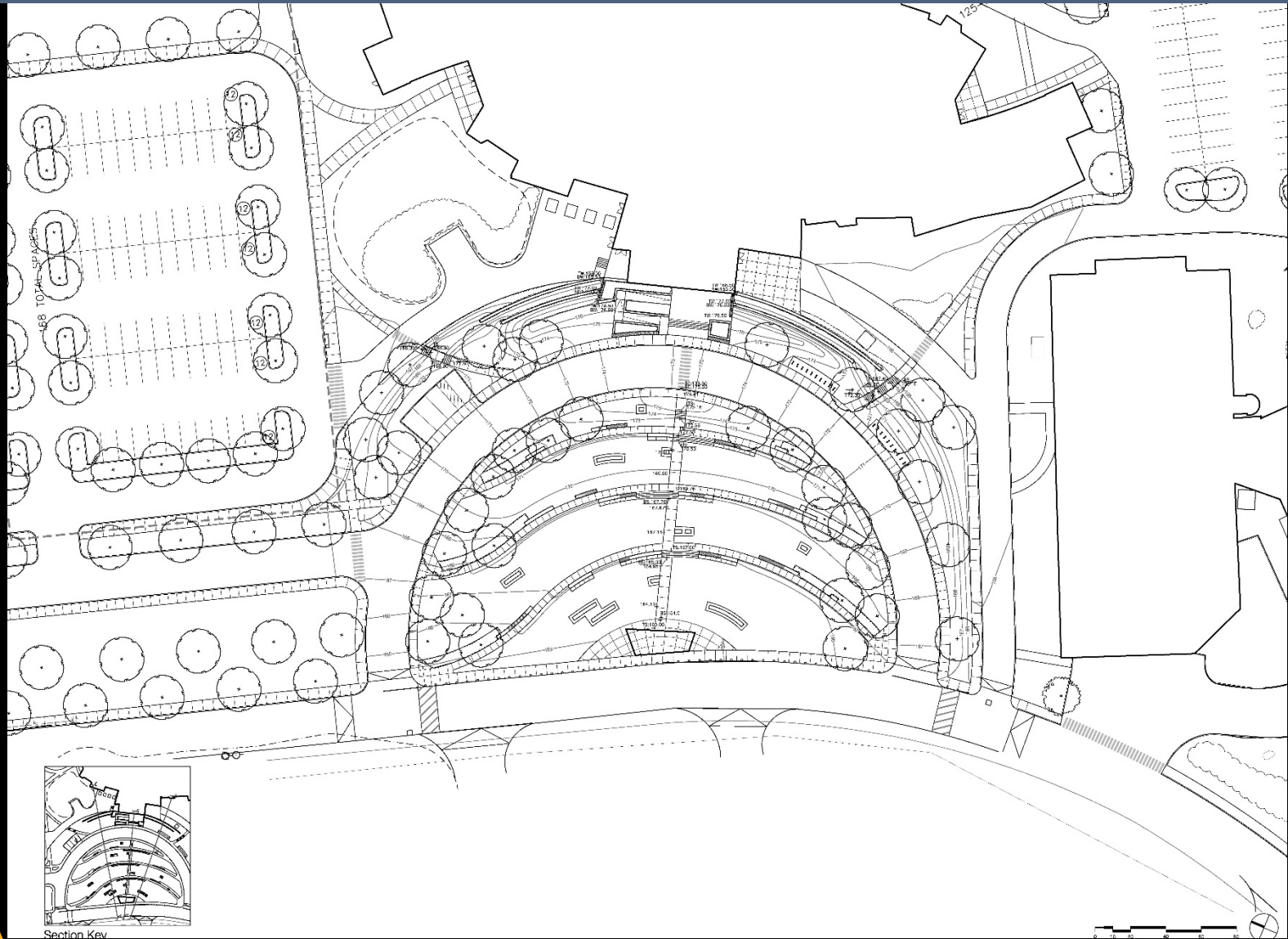
Parking Count Analysis

	Day	Night
Adult ESL	5	425
Fuller	100	-
Farley	150	150
McCarthy	85	-
PIC	15	-
Building and Grounds	20	5
Early Childhood	3	-
Truant	1	1
Board of Health	20	15
<i>Subtotal</i>	<i>399</i>	<i>596</i>
Contractor	100	-
Adult ESL off site parking	-	-100
<i>Total</i>	<i>499</i>	<i>496</i>

Refined Final Site Plan



Reduced Civic Space Benches



Reduced Retaining Walls



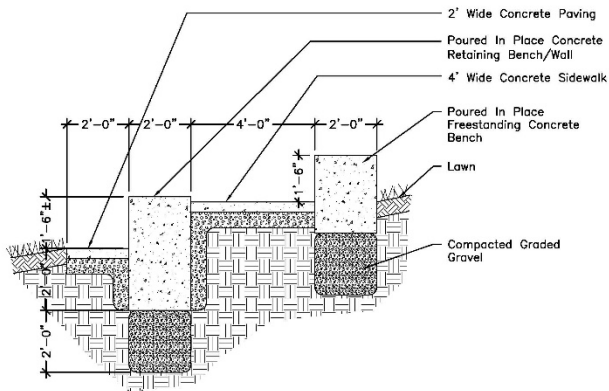
JLA
Jonathan Levi Architects
255 Beacon Street
Boston, MA 02116
Tel: 617 737 1500
Tel: 617 437 1555

PROJECT: FULLER Middle School
Framingham, MA
11/20/2017

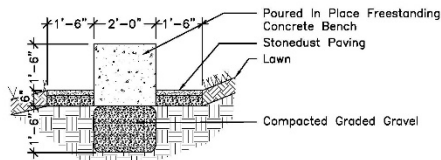
FULLER MIDDLE SCHOOL

PROJECT: 1987.02
DRAWING NO.: L-1.2

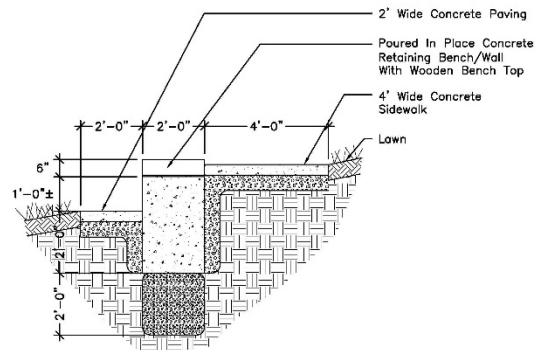
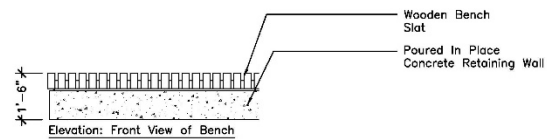
Pre-cast Bench Construction



○ Concrete Seat Walls at 4' Wide Path
Scale: 1/2" = 1'-0"

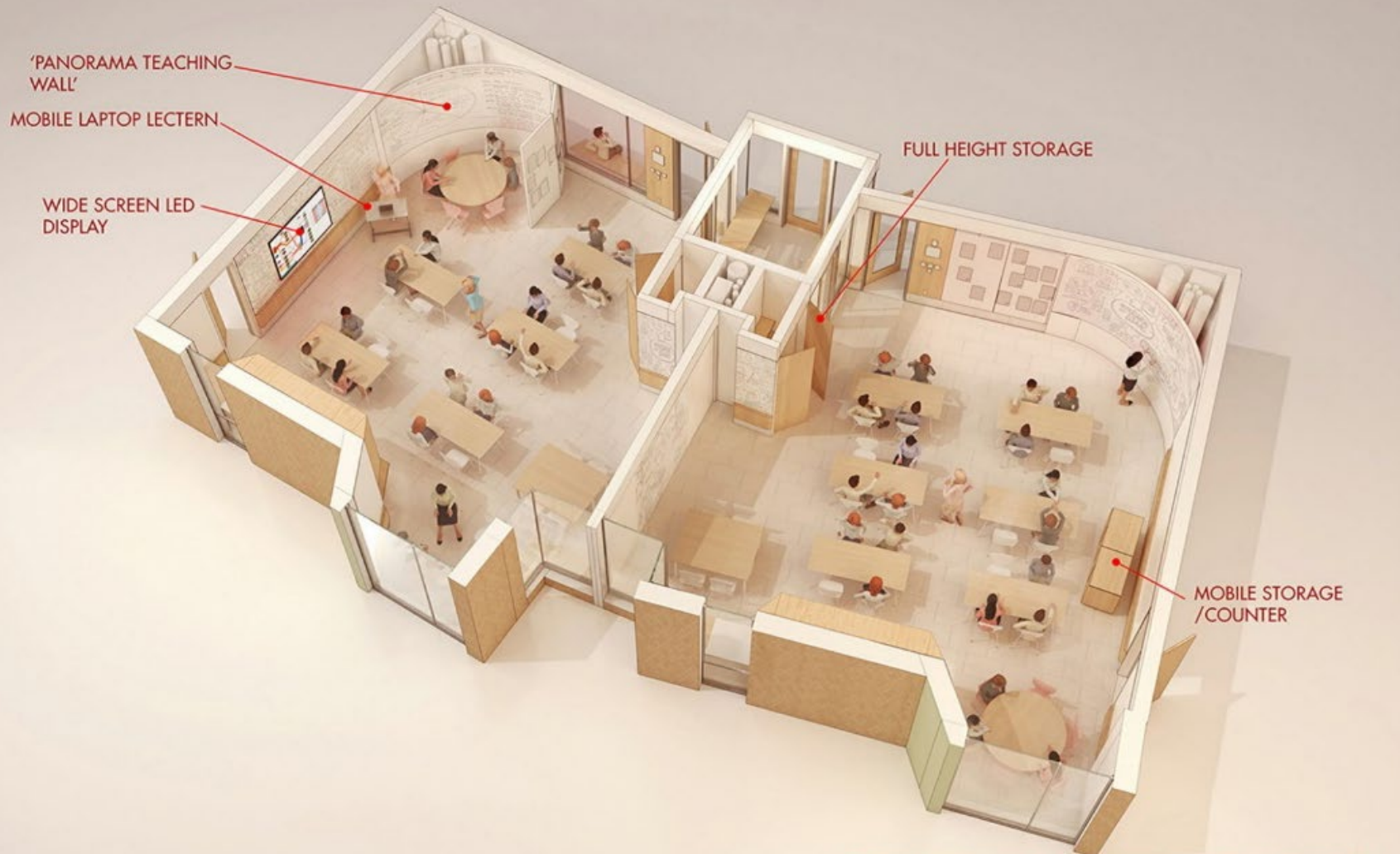


○ Freestanding Concrete Bench in Lawn with Stonedust Paving
Scale: 1/2" = 1'-0"



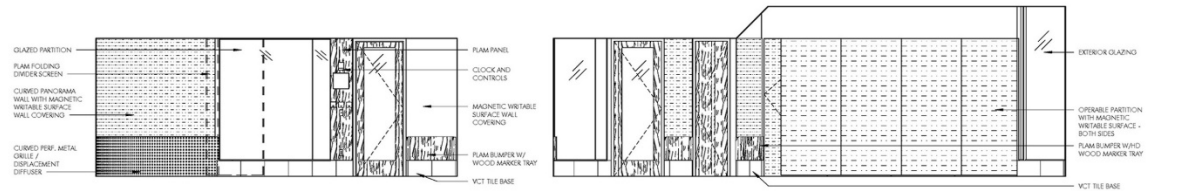
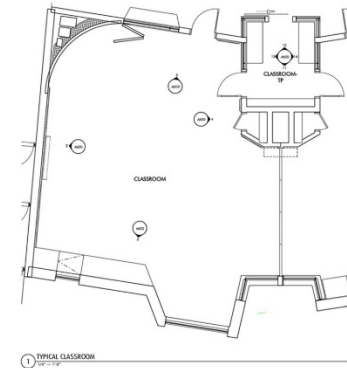
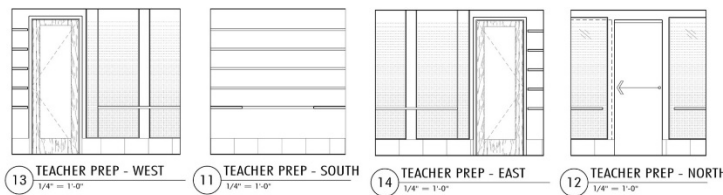
○ Concrete Seat Wall at 4' Wide Path With Wooden Bench Top
Scale: 1/2" = 1'-0"

Typical Classroom Interior



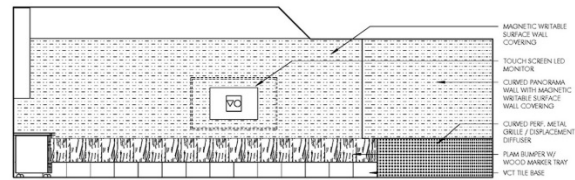
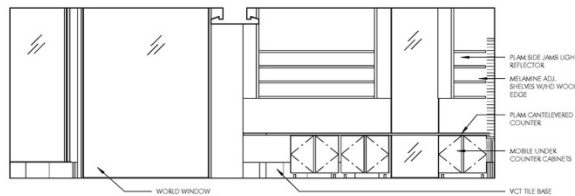
TYPICAL CLASSROOM SUITE FROM EXTERIOR

Typical Classroom Interior



5 TYPICAL CLASSROOM ELEVATION - NORTH
1/4" = 1'-0"

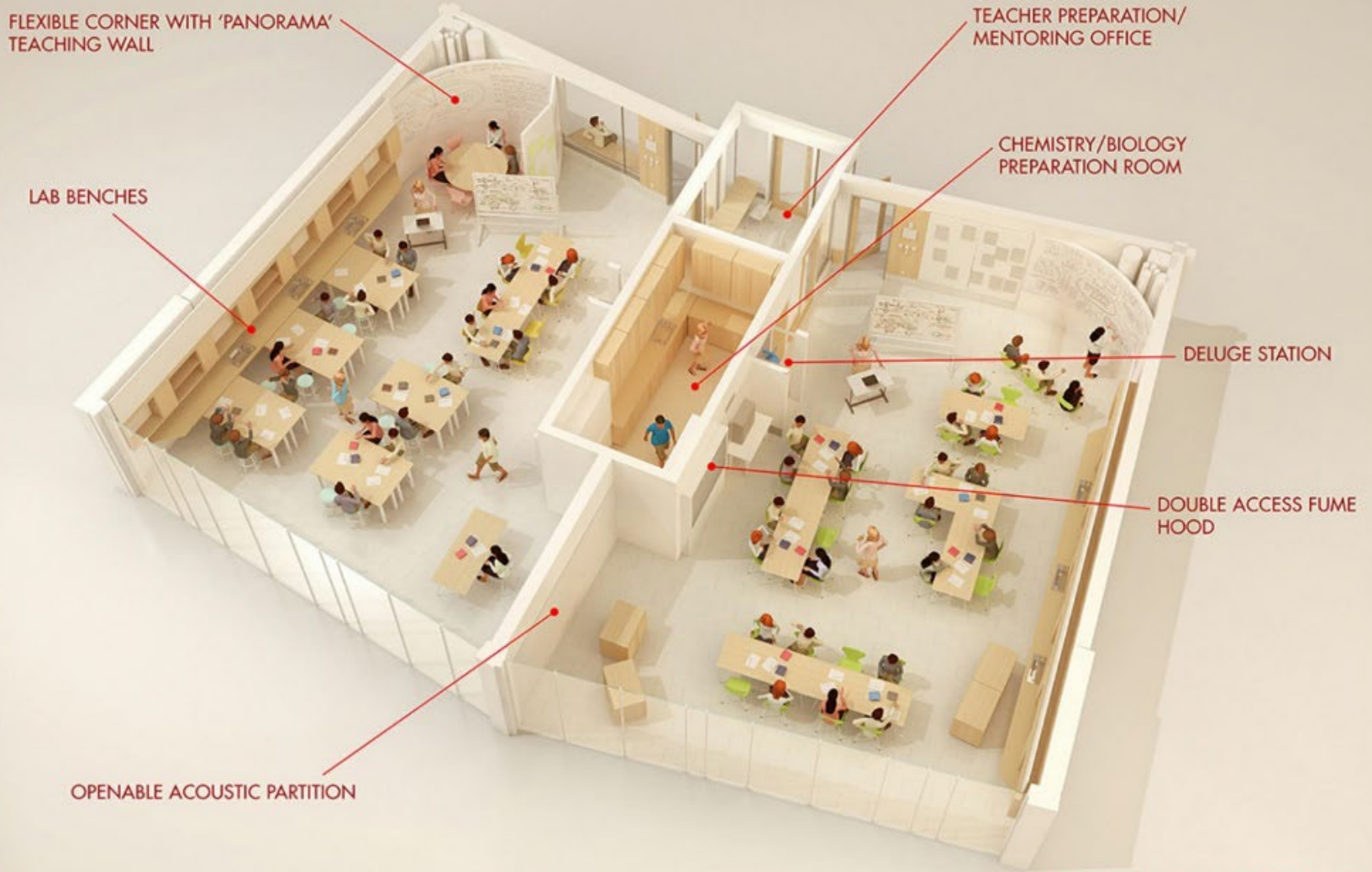
4 TYPICAL CLASSROOM ELEVATION - EAST
1/4" = 1'-0"



3 TYPICAL CLASSROOM ELEVATION - SOUTH
1/4" = 1'-0"

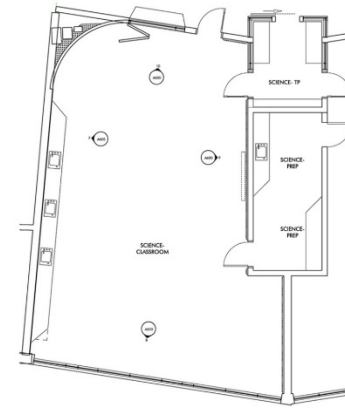
2 TYPICAL CLASSROOM ELEVATION - WEST
1/4" = 1'-0"

Science Classroom Interior

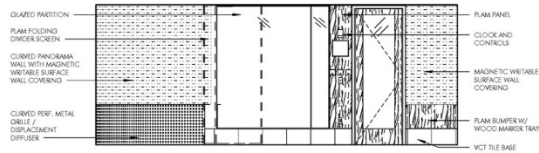


SCIENCE CLASSROOM SUITE

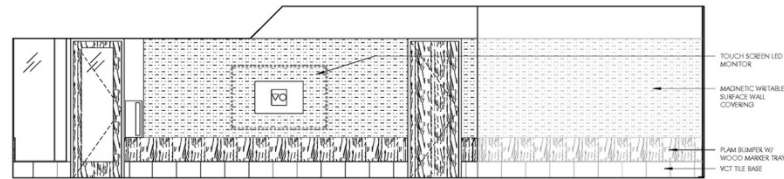
Science Classroom Interior



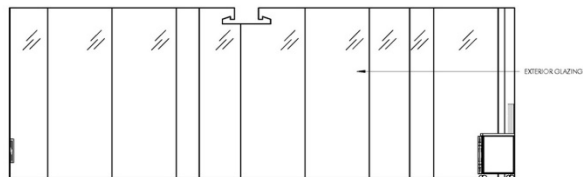
4 TYPICAL SCIENCE CLASSROOM



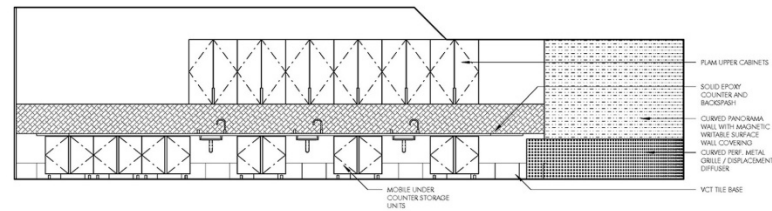
10 TYPICAL SCIENCE ELEVATION - NORTH
1/4" = 1'-0"



9 TYPICAL SCIENCE ELEVATION - EAST
1/4" = 1'-0"



8 TYPICAL SCIENCE ELEVATION - SOUTH
1/4" = 1'-0"



7 TYPICAL SCIENCE ELEVATION - WEST
1/4" = 1'-0"

