

FULLER MIDDLE SCHOOL FEASIBILITY STUDY

Community Forum No. 8

October 1, 2018

Agenda

1. Introduction and Project Need
2. The Design: Site and Building
3. Benefits to the Students and Community
4. Schedule and Cost
5. Important Dates
6. Questions

SCHOOL BUILDING COMMITTEE MEMBERS

Dr. Yvonne Spicer

David Miles

Dr. Edward Gotgart

Thatcher Kezer, III

Adam Freudberg

Dr. Robert Tremblay

Charlie Sisitsky

Richard Finlay

Noval Alexander

Mary Ellen Kelley

Jennifer Pratt

Heather Connolly

Matt Torti

Anne Ludes

Mayor

Co-Chair, Resident with Finance Experience

Co-Chair, Chief Operating Officer, FPS

Chief Operating Officer

School Committee Chair

Superintendent of Schools

City Council Member

School Committee Member and Convenor

School Committee Member

Chief Financial Officer

Chief Procurement Officer

Former School Committee Chair

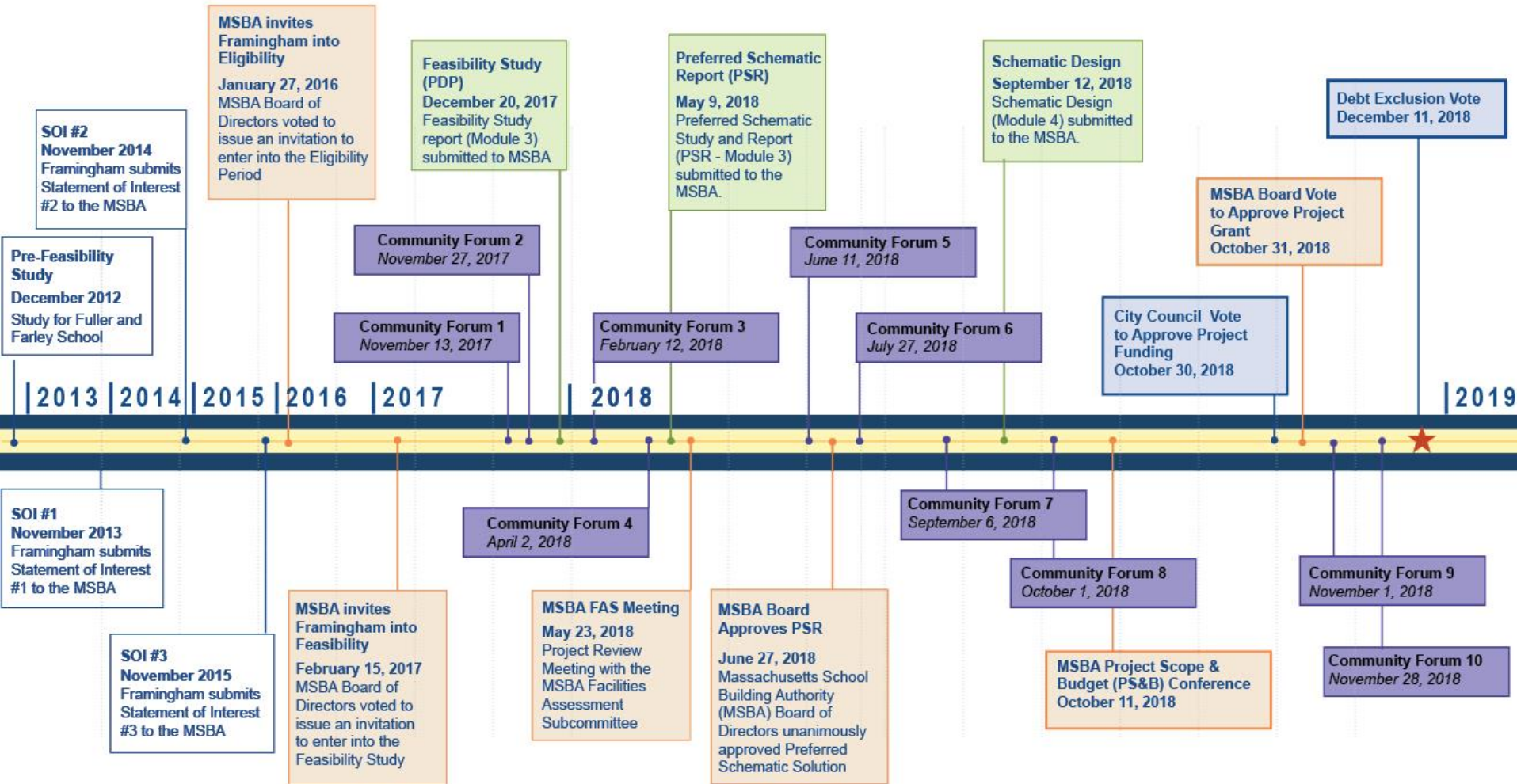
Director of Buildings and Grounds, FPS

Director of Secondary Education

SCHOOL BUILDING COMMITTEE MEMBERS

Jose Duarte	Principal, Fuller Middle School
Caitlin Stempleski	Teacher, Fuller School Middle
Patrick Johnson	Principal, Walsh Middle School
Michael Tusino	Building Commissioner
Richard Weader II	Member
Michael Grilli	Member
Dr. Jennifer Krusinger Martin	Member
Donald C. Taggart III	Member
David Panich	Member
Thomas Barbieri	Member
Dr. Dale Hamel	Member

SIX YEARS OF PLANNING

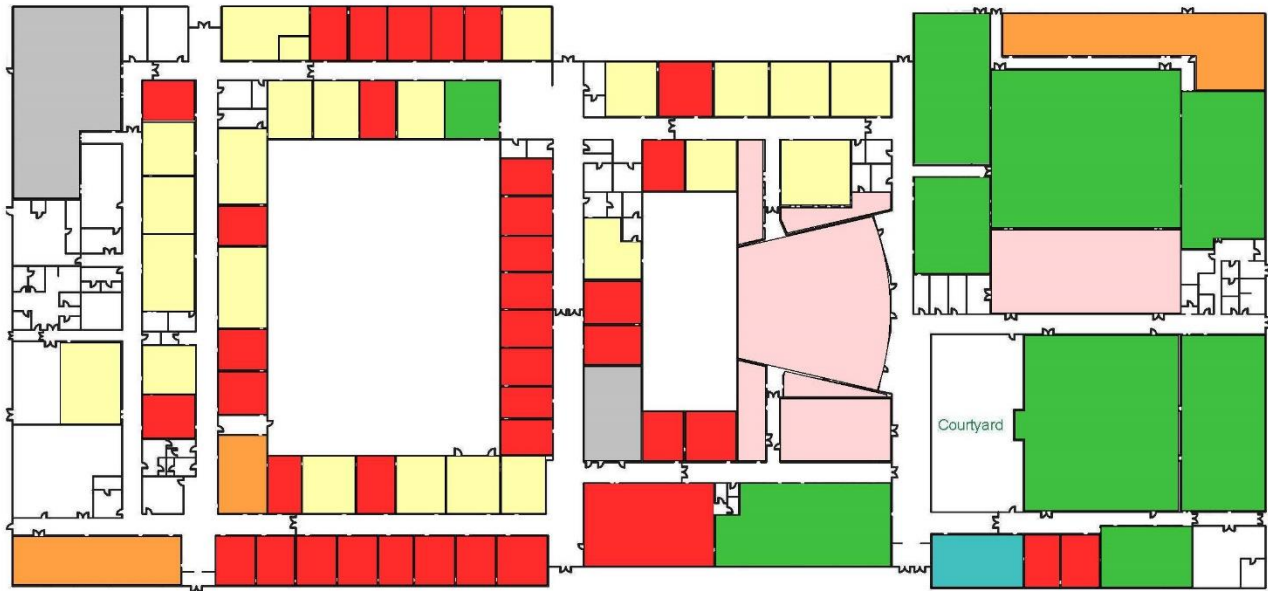


OPEN, TRANSPARENT AND PUBLIC PROCESS

Since May 2017, advertised and televised public meetings on the Fuller Middle School Project have included:

- **26 School Building Committee Meetings**
- **7 Community Forums**
- **4 City Council Meetings**
- **4 School Committee Meetings**

EDUCATIONAL DEFICIENCIES



- BETWEEN 90% - 110% MSBA GUIDELINE
- MORE THAN 110% MSBA GUIDELINE
- LESS THAN 90% MSBA GUIDELINE
- NOT IN MSBA PROGRAM
- OUTSIDE PROGRAMS

1 FULLER SCHOOL - MSBA SPACE NEEDS COMPLIANCE
1" = 60'-0"

PHYSICAL BUILDING DEFICIENCIES

Energy Code

Envelope

Accessibility

Structural

Mechanical, Electrical and
Plumbing Systems

Hazardous Materials



EDUCATIONAL PROGRAM

Fuller Middle School is in its fourth year of STEAM (Science, Technology, Engineering, Arts and Mathematics)

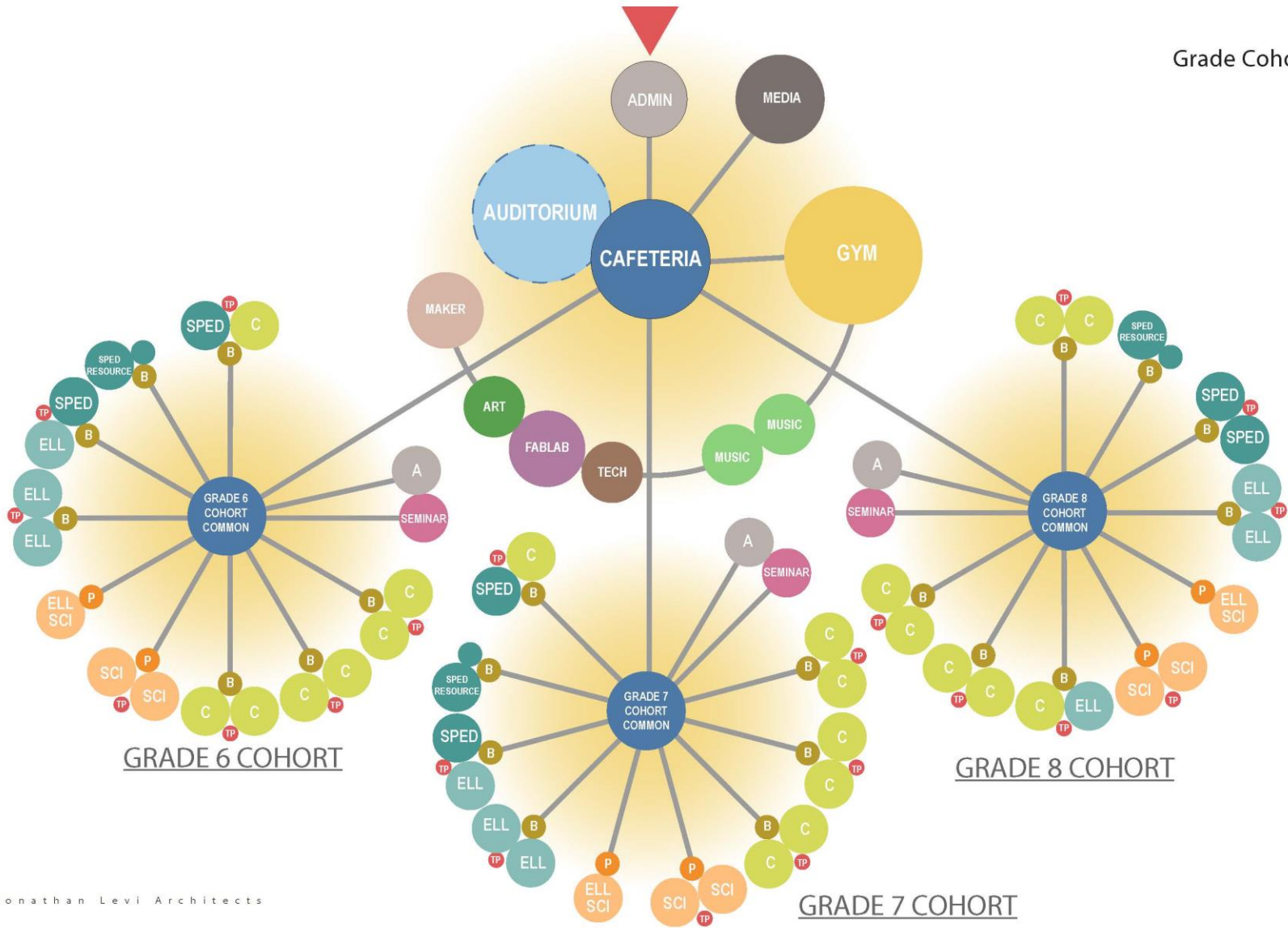
- Transdisciplinary Instruction – Connect multiple content areas by linking concepts and skills with a real-world context. Encourage and support Inquiry.
- Personalized and Collaborative Learning – Teach students to take charge of their own learning with “hands-on” projects that can correspond with their interests and needs.
- Whole Child, Whole Community – Actively support emotional and social foundations to improve academic success.

EDUCATIONAL PROGRAM

- Visible Learning – Inspire students to learn from each other through student collaboration, presentations, demonstrations, and ongoing works-in-progress.
- Community and Civic Hub – Continue existing use as central location for meetings, adult learning, school productions and recreational activities.
- Adaptability – This building will need to meet Framingham’s future needs, so must be versatile enough to accommodate different teaching methods, including traditional ones.

EDUCATIONAL PROGRAM DIAGRAM

Grade Cohorts





SITE PLAN



AERIAL VIEW

FIRST FLOOR PLAN

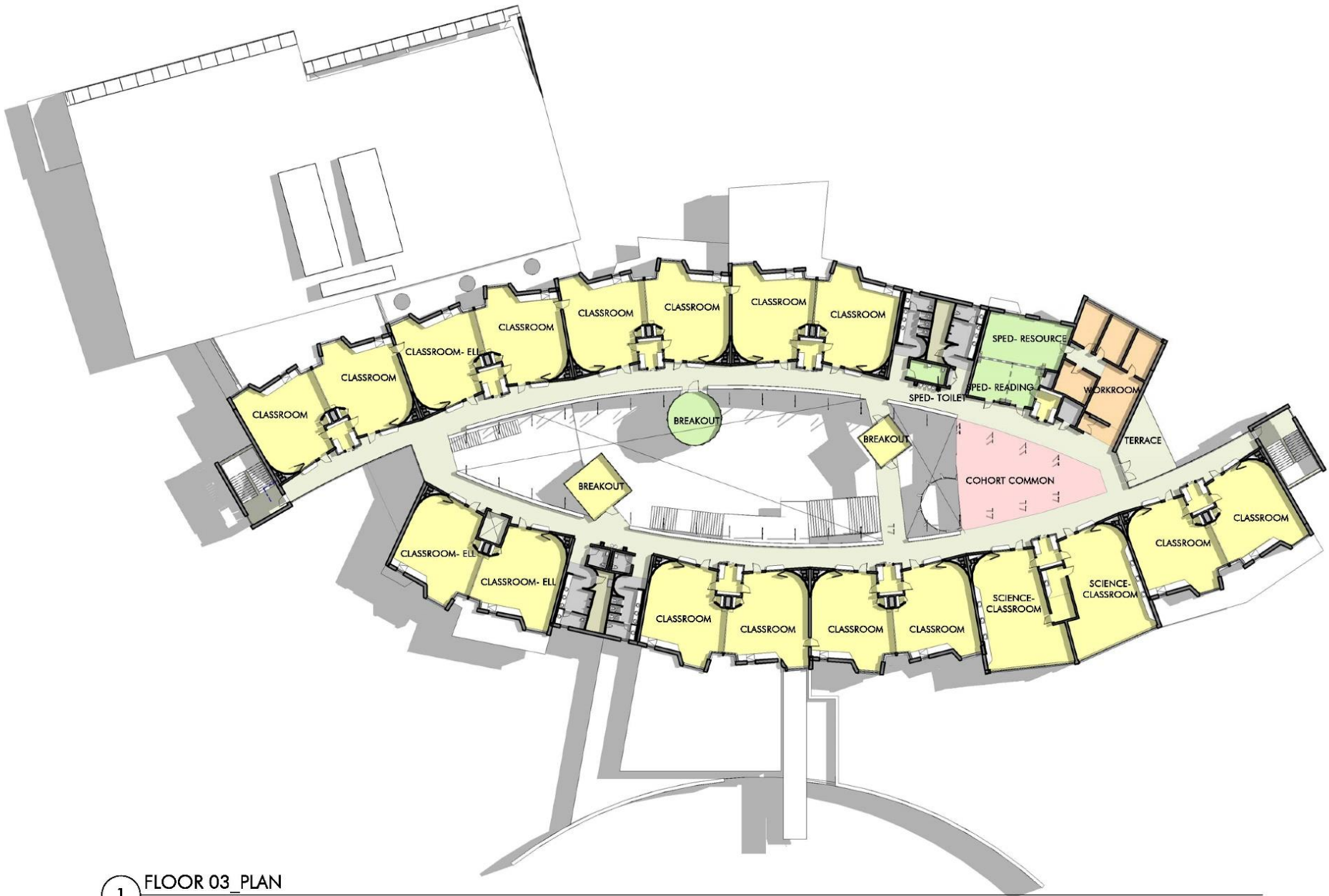


1 FLOOR 01_PLAN
1/32" = 1'-0"

SECOND FLOOR PLAN



THIRD FLOOR PLAN



1 FLOOR 03_PLAN
1/32" = 1'-0"

WRITABLE MAGNETIC SURFACE

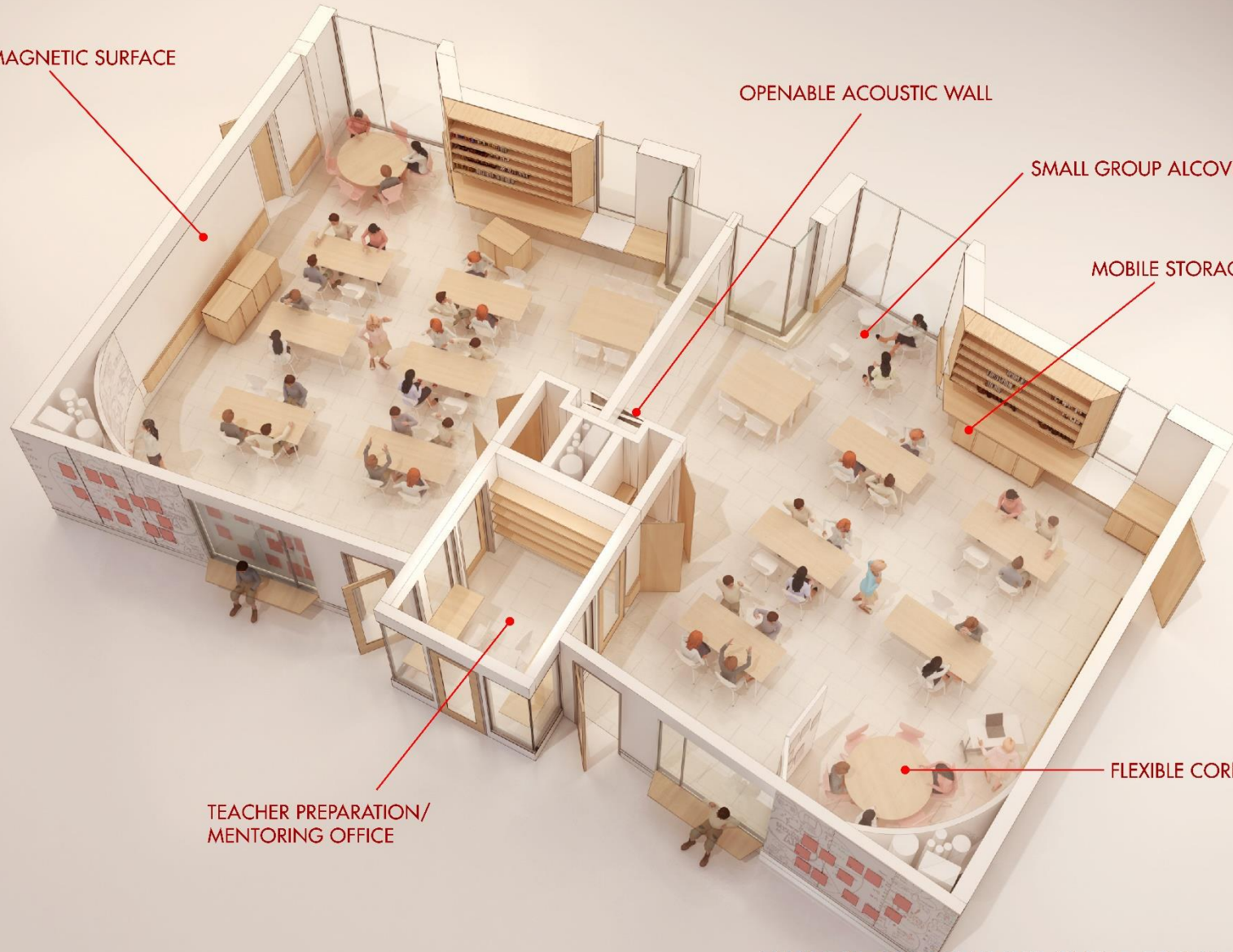
OPENABLE ACOUSTIC WALL

SMALL GROUP ALCOVE

MOBILE STORAGE

FLEXIBLE CORNER

TEACHER PREPARATION/
MENTORING OFFICE



TYPICAL CLASSROOM SUITE FROM CORRIDOR

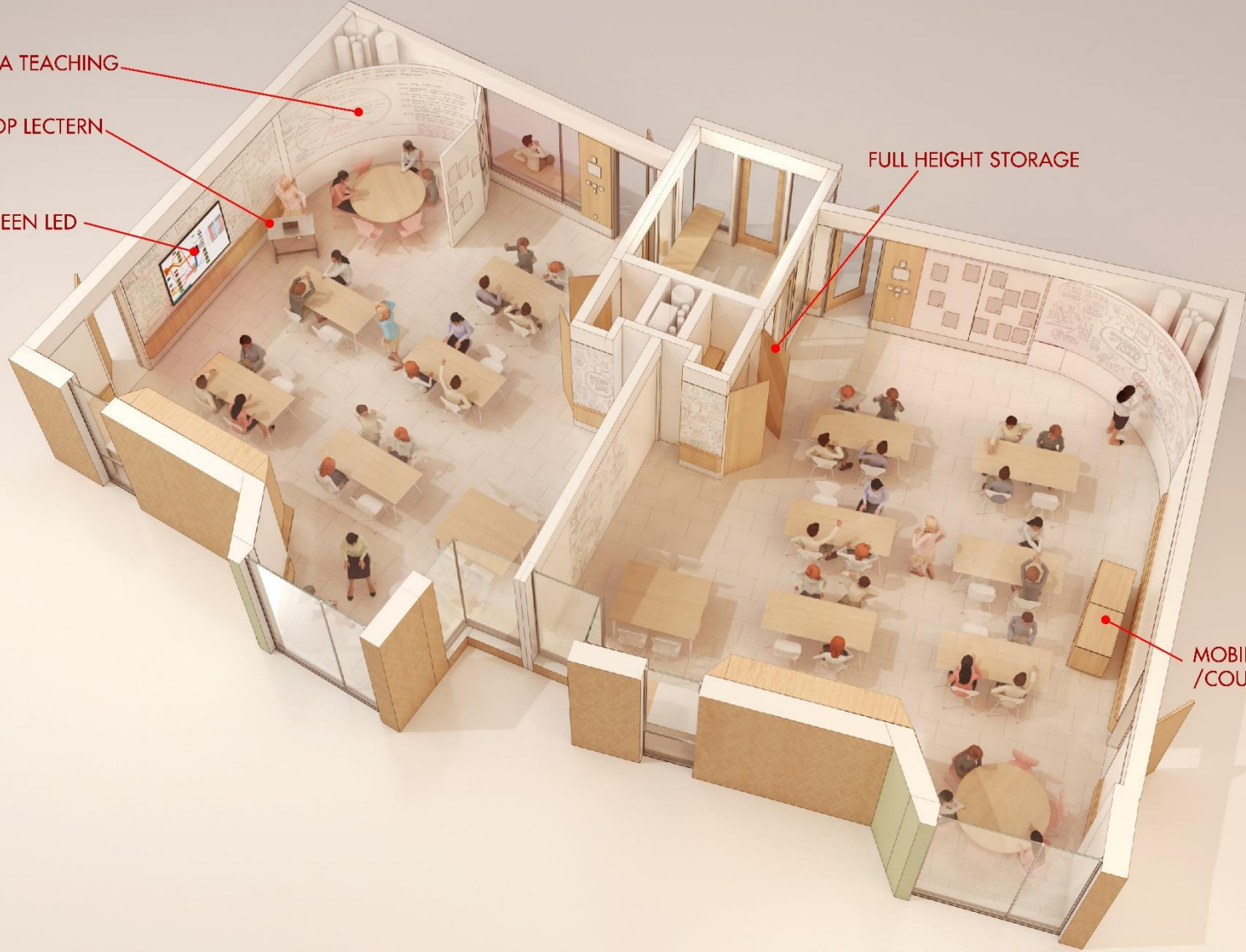
'PANORAMA TEACHING WALL'

MOBILE LAPTOP LECTERN

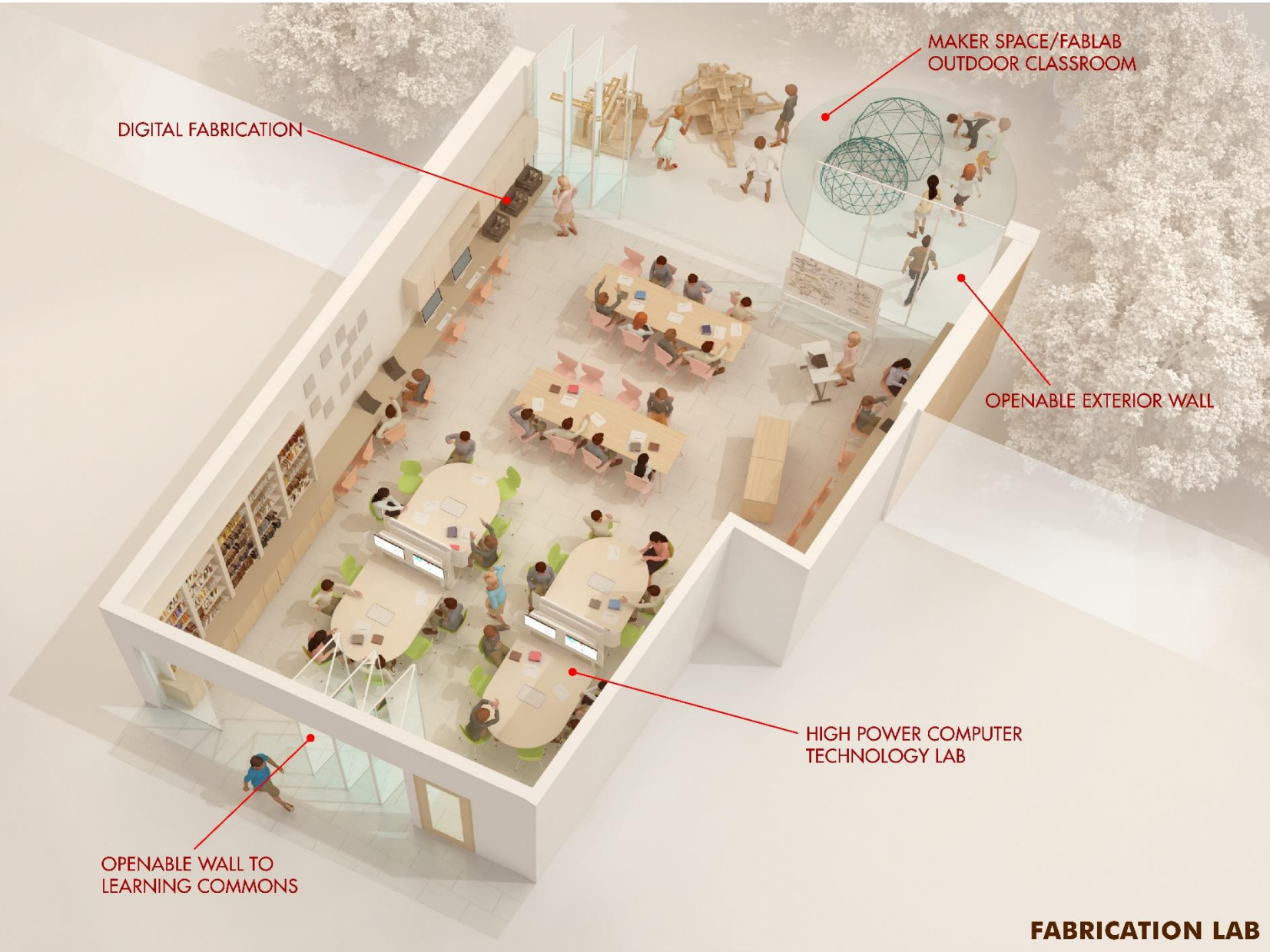
WIDE SCREEN LED DISPLAY

FULL HEIGHT STORAGE

MOBILE STORAGE /COUNTER



TYPICAL CLASSROOM SUITE FROM EXTERIOR



DIGITAL FABRICATION

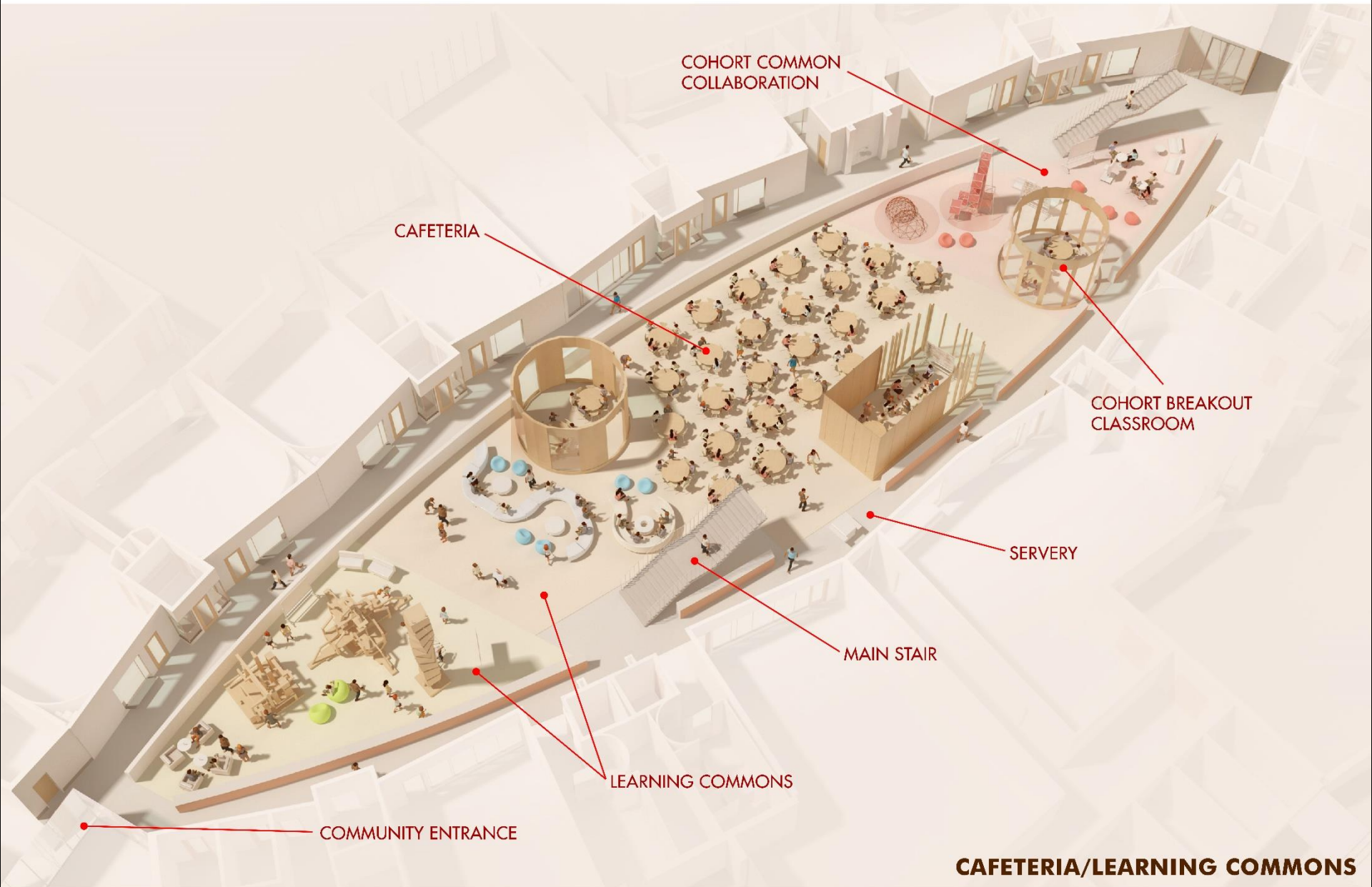
MAKER SPACE/FABLAB
OUTDOOR CLASSROOM

OPENABLE EXTERIOR WALL

HIGH POWER COMPUTER
TECHNOLOGY LAB

OPENABLE WALL TO
LEARNING COMMONS

FABRICATION LAB



COHORT COMMON
COLLABORATION

CAFETERIA

COHORT BREAKOUT
CLASSROOM

SERVERY

MAIN STAIR

LEARNING COMMONS

COMMUNITY ENTRANCE

CAFETERIA/LEARNING COMMONS

MAKER SPACE SHOP

OVERHEAD DOOR TO
OUTDOORS

MAKER SPACE/FABLAB
OUTDOOR CLASSROOM

OPENABLE WALL TO
LEARNING COMMONS

MAKER SPACE

SEPTEMBER 24, 2018
FRAMINGHAM FULLER SCHOOL

FLEXIBLE CORNER WITH 'PANORAMA'
TEACHING WALL

TEACHER PREPARATION/
MENTORING OFFICE

LAB BENCHES

CHEMISTRY/BIOLOGY
PREPARATION ROOM

DELUGE STATION

DOUBLE ACCESS FUME
HOOD

OPENABLE ACOUSTIC PARTITION

SCIENCE CLASSROOM SUITE



CROSS SECTION THROUGH CAFETERIA/LEARNING COMMONS



PERSPECTIVE FROM FLAGG DRIVE

3 Story Compact Design means lower costs for foundations and more open space when complete

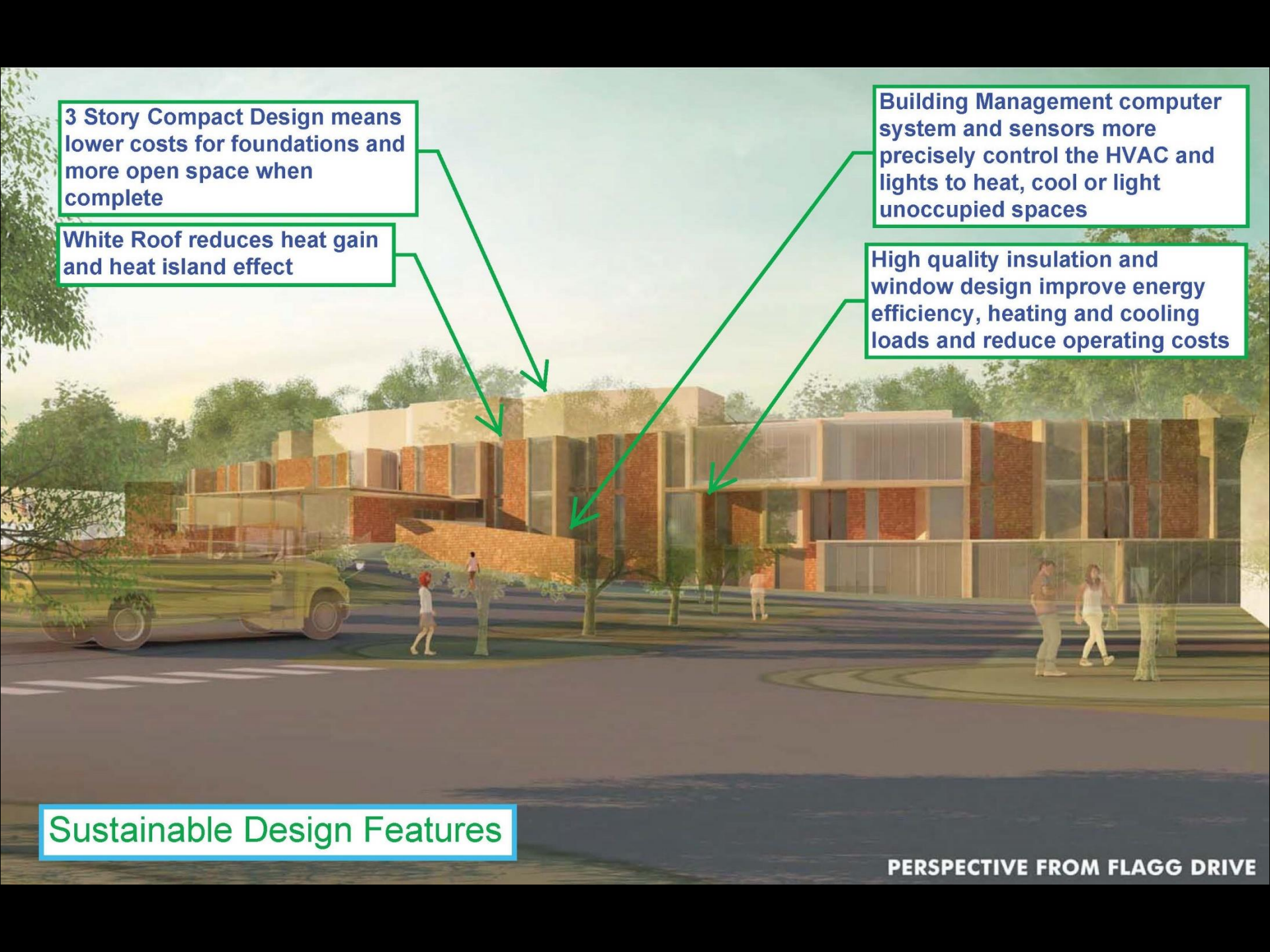
White Roof reduces heat gain and heat island effect

Building Management computer system and sensors more precisely control the HVAC and lights to heat, cool or light unoccupied spaces

High quality insulation and window design improve energy efficiency, heating and cooling loads and reduce operating costs

Sustainable Design Features

PERSPECTIVE FROM FLAGG DRIVE



BENEFITS TO THE STUDENTS

- Appropriate classroom sizes and relationships according to contemporary educational standards.
- Collaboration spaces that support project based learning - preparing students for the contemporary workforce.
- Natural daylighting and healthy ventilation for improved educational outcomes.
- Full range of special education spaces to support individual student needs.
- STEM (science, technology, engineering and mathematics) instruction spaces to fulfill district's elementary feeder school commitment to STEM curricula.
- Spaces that facilitate teacher collaboration toward improved teaching practices.

BENEFITS TO THE COMMUNITY

- Replacement of decaying, inefficient facility with ever increasing maintenance and operation cost burden to the City. Reduced building size, modern materials, and far more energy efficient HVAC systems will increase operating efficiency over the next 70 years.
- Reduced building footprint yields increased City open space and playfield space, and improves impact to adjacent conservation lands.
- Traffic calming measures improve public safety.
- Renewal of community access athletic and performance facilities for future use.

PROJECT TIMELINE

December 2018 – Detailed Design Commences

Summer 2019 – Construction Commences

Summer 2021 – New Building is Completed

December 2021 – Demolition and Sitework Completed

TOTAL PROJECT COST

CONSTRUCTION COST (BUILDING + SITE WORK+ MARK-UPS)	\$77.9M
FEES & EXPENSES	\$12.6M
FURNITURE, FIXTURES & EQUIPMENT	\$2.3M
CONTINGENCIES	\$5.5M
TOTAL	\$98.3M

HOW DOES THAT COMPARE TO RECENT MIDDLE SCHOOL PROJECTS?

Project Name	Cost (\$M)
Lynn Middle Schools	\$188
Saugus Middle/High School	\$160
Holyoke Lawrence Middle School	\$131
Dennis-Yarmouth Mattacheese Middle School	\$113
Beverly Middle School	\$111
Natick Kennedy Middle School	\$110
Framingham Fuller Middle School	\$98
Westport Middle/High School	\$97
Abington Middle/High School	\$97

WHAT WILL BE FRAMINGHAM'S SHARE?

PROJECT COST	\$98.3M
APPROXIMATE MSBA GRANT	\$39.5M
APPROXIMATE COST TO FRAMINGHAM	\$58.8M

WHAT DOES THIS MEAN TO THE AVERAGE TAXPAYER?

29 Cents annual tax increase per \$1,000
valuation

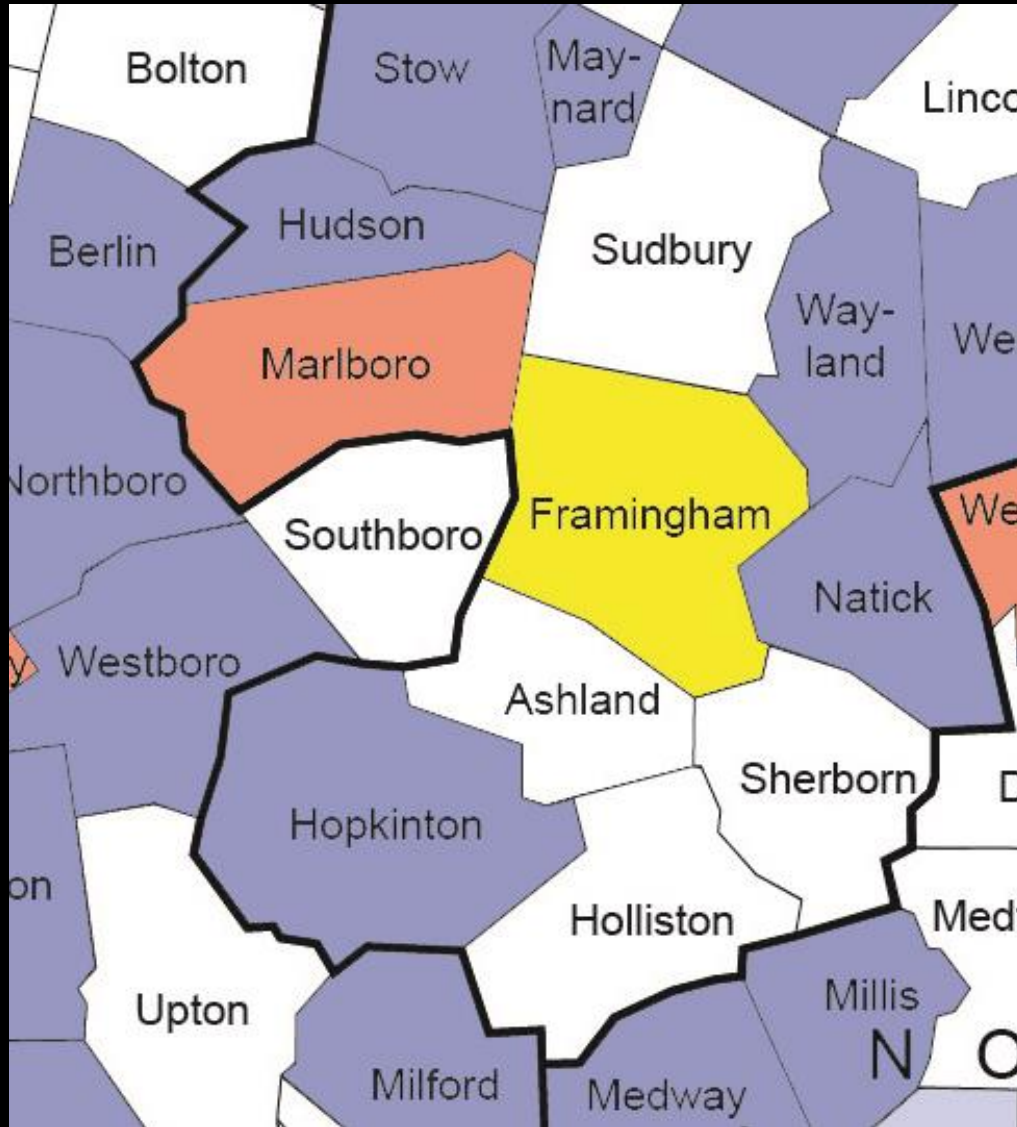
\$101 per year, OR

\$8.41 per month, OR

28 Cents per day

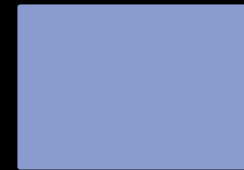
Based on a 20-year bond utilizing \$8
million of the Capital Stabilization Fund

WHAT HAVE OUR NEIGHBORS BEEN DOING?



MSBA CORE PROGRAM PROJECTS IN NEIGHBORING TOWNS

(within past ten years):



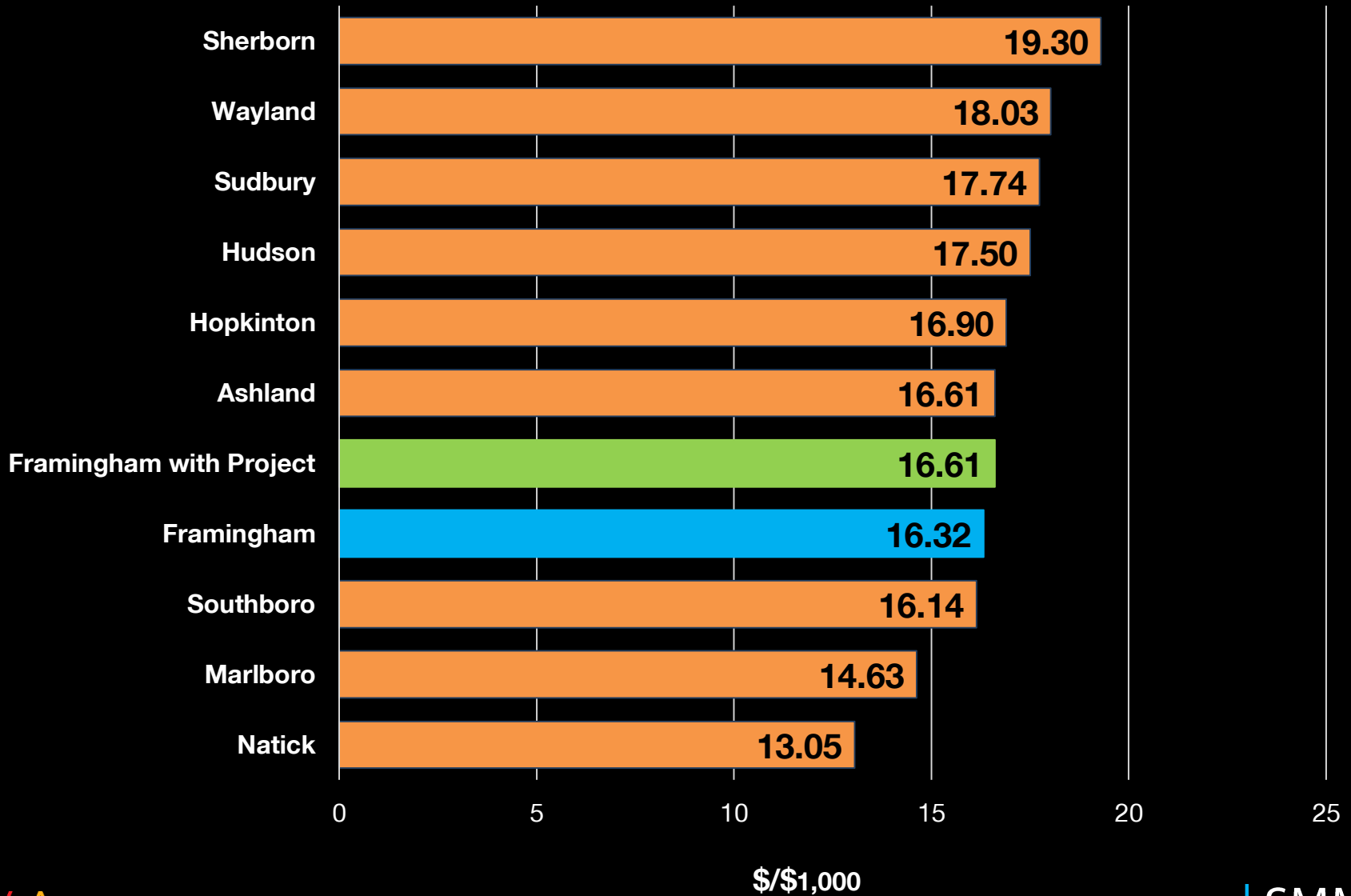
Completed or Under Construction



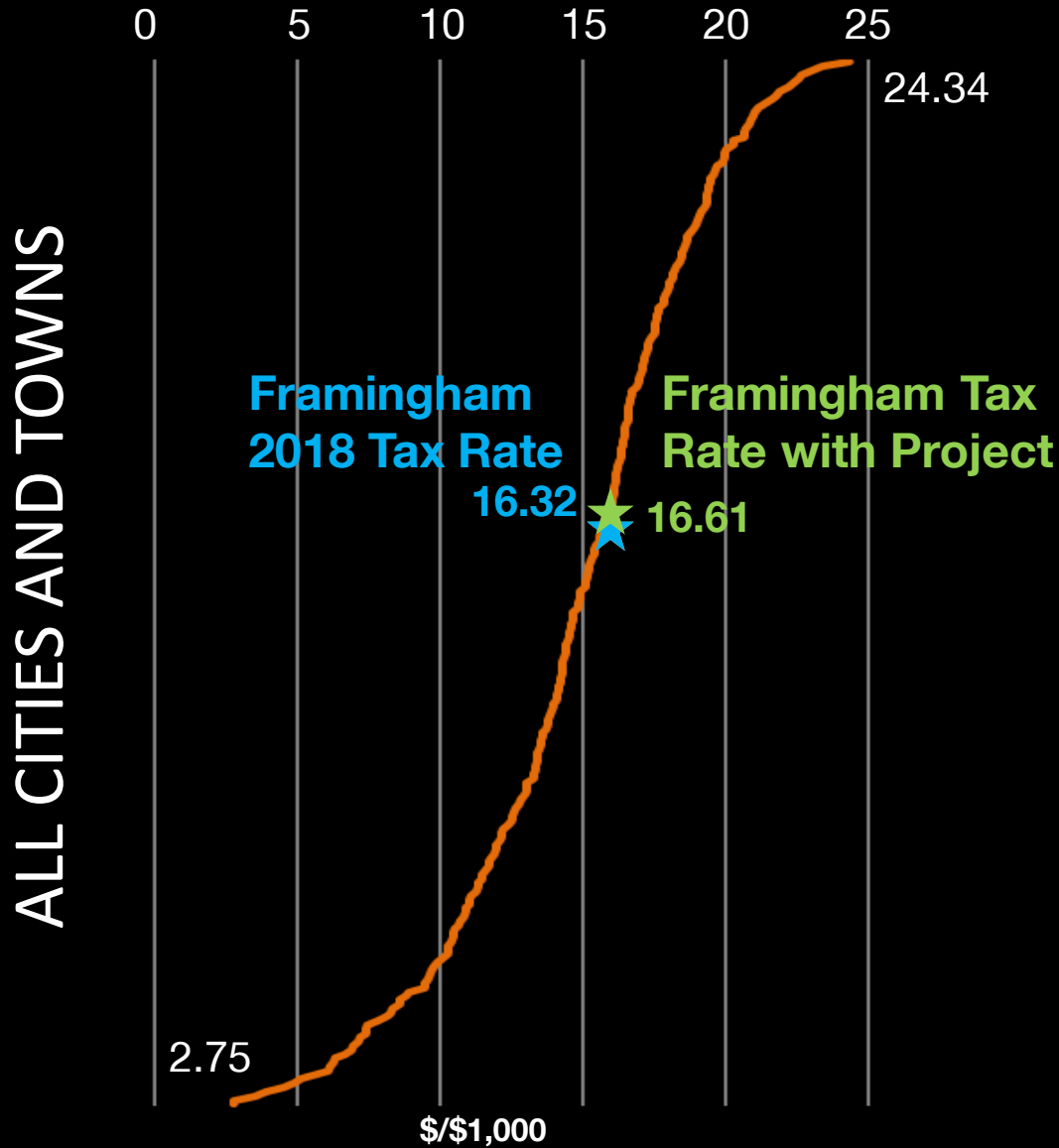
In Feasibility to Design Development Phase

SURROUNDING COMMUNITIES 2018 RESIDENTIAL TAX RATE

(\$/\$1,000 Assessed Value)



STATE-WIDE COMMUNITIES 2018 RESIDENTIAL TAX RATE (\$/\$1,000 Assessed Value)



IMPORTANT DATES

- October 6, 2018 - Community Presentation at McAuliffe
- October 10, 2018 – Finance Subcommittee Meeting
- October 16, 2018 – City Council Public Hearing
- October 30, 2018 – City Council Meeting to approve funding
- October 31, 2018 – MSBA Board Meeting to approve project
- November 1, 2018 – Community Forum No. 9
- November 28, 2018 – Community Forum No. 10
- December 11, 2018 – Debt Exclusion Ballot Vote

COMMUNITY RESOURCES

Project Website:

www.fullerbuildingproject.com

To receive information on the Fuller Middle School Building Project, please subscribe to the City's [“Notify Me”](#) system