

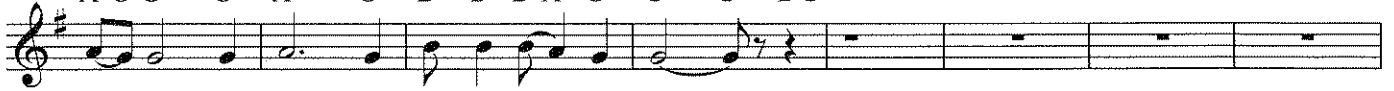
Bright Mornin' Star PARTS

Ms. Rosser : D G G G G G E D D G A A A B A G G G B B B B



Brightmorn-in' star's a - ris - in', brightmorn-in' star's a - ris - in', brightmorn-in' star's a -

7 A G G G A G B B B A G G G D G



ris - in', and day is break-in' in - my soul. -

15

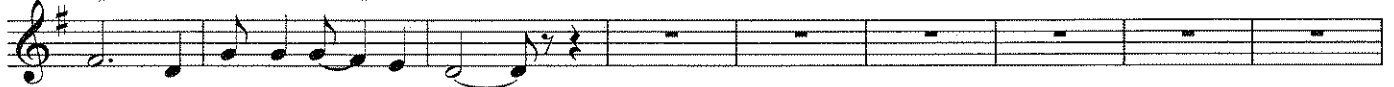


25 Ms. Zuniga: D D D D C D D D F# F# F# F# E D D D G G G D E E E



Brightmorn-in star's a - ris - in', brightmorn-in star's a - ris - in, brightmorn-in star's a - ris-in, and

32 F# D G G G F# E D D



day is break-in i - in my soul.

41



51 Mr. Petras: B B B B A B A G B B A G F# F# F# F# G A D D D C B B B C



Es trella del a-man-cer se le - va - n-ta, estrella del a-man-cer se le - va-n-ta, oh, es-

56 D D D E D D E D D C C B C D D E D C B D D E D C B B B



trella del a-man-cer se le - va-n-ta, y el al - ba en-tra, y el al-ba en-tra Hasta mi al - ma.