



SEMHS

EXPECTATIONS FOR ALL STUDENTS

Welcome to the
2024–2025 School Year




AGENDA

- Attendance Expectations
- Dress for Success
- School Grounds
- Digital Communications Devices
- Student Deliveries
- Public Display of Affection
- Grounds for Suspension and Expulsion
- Discipline Consequences
- Student Success Strategies
- Student Support
- Reporting/Anonymous Tips



ATTENDANCE



- Students are required to attend school every day and be on time to all classes. 
- Students absent from a class without an excuse are considered to be **TRUANT**.
- If you are absent, have your parent/guardian call the Attendance Office as soon as possible to verify the absence.

ATTENDANCE



- Students will not be allowed to leave campus at any time without permission.
- Students that become ill, **must report to the Nurse's Office first.** The nurse will see the student and determine if it is necessary to send the student home.





MORNING ARRIVAL

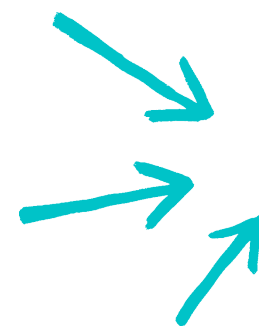


School starts at **9:20 am on Mondays, 8:30 am the rest of the week.**

To ensure you are not late, plan to arrive to school **no later than 9am on Mondays, no later than 8:10 am** the rest of the week.



Need help with transportation? Metro GoPass available to **ALL** students for **FREE**. Visit the Attendance or Guidance Office to scan the QR code (look for the green sign).





“

EMUHSD LATE TO SCHOOL FOOD POLICY

”



Arriving after 8:30 a.m.

Students who arrive after 8:30 a.m. to school will be required to leave any food or drinks in the office. These items can be picked up during the next scheduled break.



Attendance Counts! All Day Every Day!





“ DRESS FOR SUCCESS ”



EMUHSD Board of Trustees Policy 5232

The Board of Trustees believes that appropriate dress and personal hygiene contribute to a proactive learning environment.



Dress for school as you would dress for a professional job.



DRESS FOR SUCCESS



- Clothing, jewelry, hats, beanies, caps and personal items (backpacks, gym bags, pins, water bottles, etc.) shall be free of writing, pictures, or other insignia which are **crude, vulgar, profane, or sexually suggestive; no drug, tobacco, or alcohol related images; no gang affiliation; no images which advocate racial, ethnic, or religious prejudice.**



- **Appropriate hats and clothing are expected**

DRESS FOR SUCCESS



- Sunglasses are allowed **outdoors**
- Clothes shall be sufficient to conceal undergarments (i.e. boxer briefs, underwear, bras, etc) at all times. See-through or fishnet fabric tops without tank tops worn underneath as well as off the shoulder shirts, low-cut tops, tube tops, bare midriffs tops and muscle shirts are prohibited.

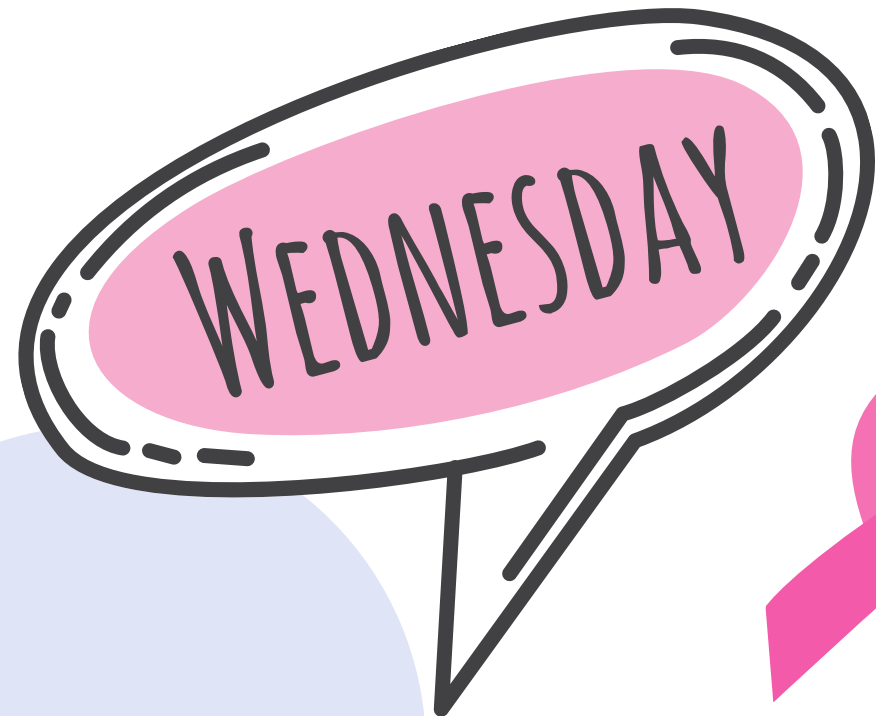
**Final determination of appropriate student dress will be made by a school administrator. Consequences will be applied as per SEMHS policy.*





Help us increase school spirit by wearing your club, class, sport, or school wear. Fridays is School Spirit Day!


Sport your favorite college! Every Monday is college shirt day.



Wellness Wednesday. Support your Wellness center incentives on WEDNESDAYS!

SCHOOL GROUNDS



- Bicycles, skateboards, scooters of any type **may not be ridden on school grounds at any time.**
- **Off-Limits areas** are designated by **RED BOUNDARY LINES**. RED BOUNDARY LINES help ensure order and safety. Students are expected to abide by these boundary lines during nutrition, lunch, and before/after school hours. A red circle with a diagonal slash through it, indicating a prohibition or restriction.
- SEMHS and the EMUHSD are not responsible for personal items that are lost, stolen, or damaged. Students and parents may file a report of stolen items with the School Resource Officer.



STUDENT DELIVERIES



Students may not receive visitors or deliveries of any kind (food, gifts, or money etc.) during the course of the academic school day. The Administration Office will not hold money, electronic devices and accessories, birthday grams, or any other delivery for a student to pick up at a later time.

The Uber Eats logo, featuring the word 'Uber' in white and 'Eats' in green on a black background.The Doordash logo, featuring a white arrow icon and the word 'DOORDASH' in white on a red background.The Postmates logo, featuring a white silhouette of a person on a bicycle and the word 'POSTMATES' in white on a black background.The GrubHub logo, featuring the word 'GRUBHUB' in white on a red background.

ELECTRONIC DEVICES



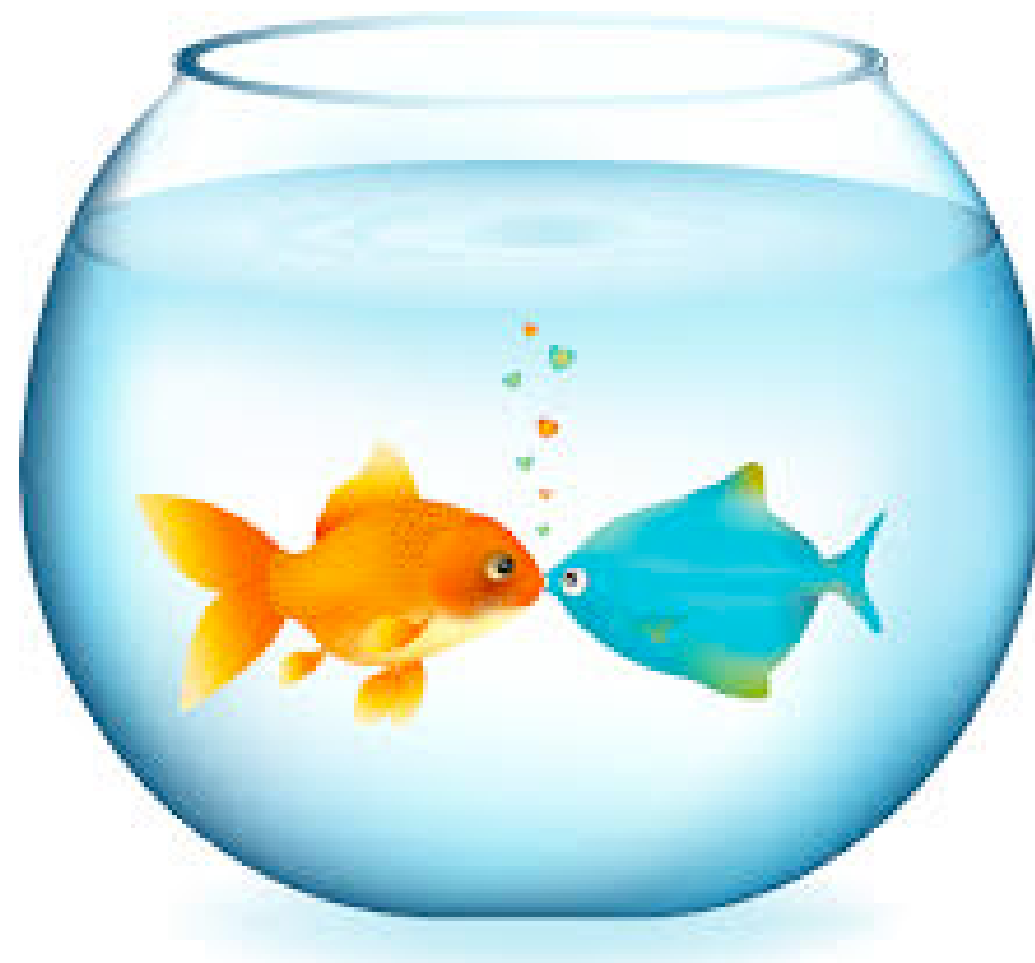
ED CODE 38900 (k) Students are **prohibited** from using electronic listening or recording devices in any classroom without the prior consent of the teacher. Please refer to your class syllabus.



PUBLIC DISPLAYS OF AFFECTION



Students will refrain from public displays of affection while on school grounds. Progressive discipline will be applied, including calling home.



GROUNDS FOR SUSPENSION OR EXPULSION



- **Possession** of controlled substances, alcohol, marijuana, paraphernalia, any intoxicant and/or being **under the influence** is not permitted **on campus or at any school function at any time.**
- **Possession** and **selling** of any **controlled substance** or controlled substance **“look-a-like”** is not permitted on campus or at any school function at any time
- Possession of **tobacco products** at school or at school sponsored activities is not permitted on campus or at any school function at any time

GROUNDS FOR SUSPENSION OR EXPULSION



NO!

- **possessing, selling** or otherwise **furnishing** firearms, including "look-a-likes"
- **brandishing** a **knife** at another person
- **possession** of an **explosive**
- Students are not permitted to **deface, damage, destroy, knowingly receive stolen** personal and/or school **property** or **steal school** or **personal property**



DISCIPLINE CONSEQUENCES



May include the following:

- Student/Parent Conferences with teacher, counselor, and/or administrator
- Saturday Academy
- Hallway Pass Restrictions
- Parent to sit in class with student
- Behavior/Senior Agreements
- Attendance Contract
- Activities Restriction including Senior Activities
- Referral to Alternative Education setting



For more detailed SEMHS School Policies visit the main page on our school's website. Use the QR code to visit it now.



STUDENT SUCCESS STRATEGIES



- Encourage **positive interactions** with all students, teachers, counselors, administrators, campus supervisors, and all other staff members
- Be a **positive influence**
- We encourage you to **SPEAK to an ADULT** on campus to problem solve and resolve conflicts
- Exhibit **good behavior** at all times
- Make **responsible** choices
- Get involved in **school activities, sports and clubs**



Kindness
MATTERS



good
vibes
only

ON-CAMPUS SUPPORT



THE WELLNESS CENTER

Students can access resources by visiting the wellness center in room 150. The Wellness Center serves as a relaxation space, students can find support for physical, mental, emotional and social concerns, ask questions or take a moment to decompress. All students are encouraged to utilize and are welcome at the wellness center.

Room 150

Ms. Salcedo

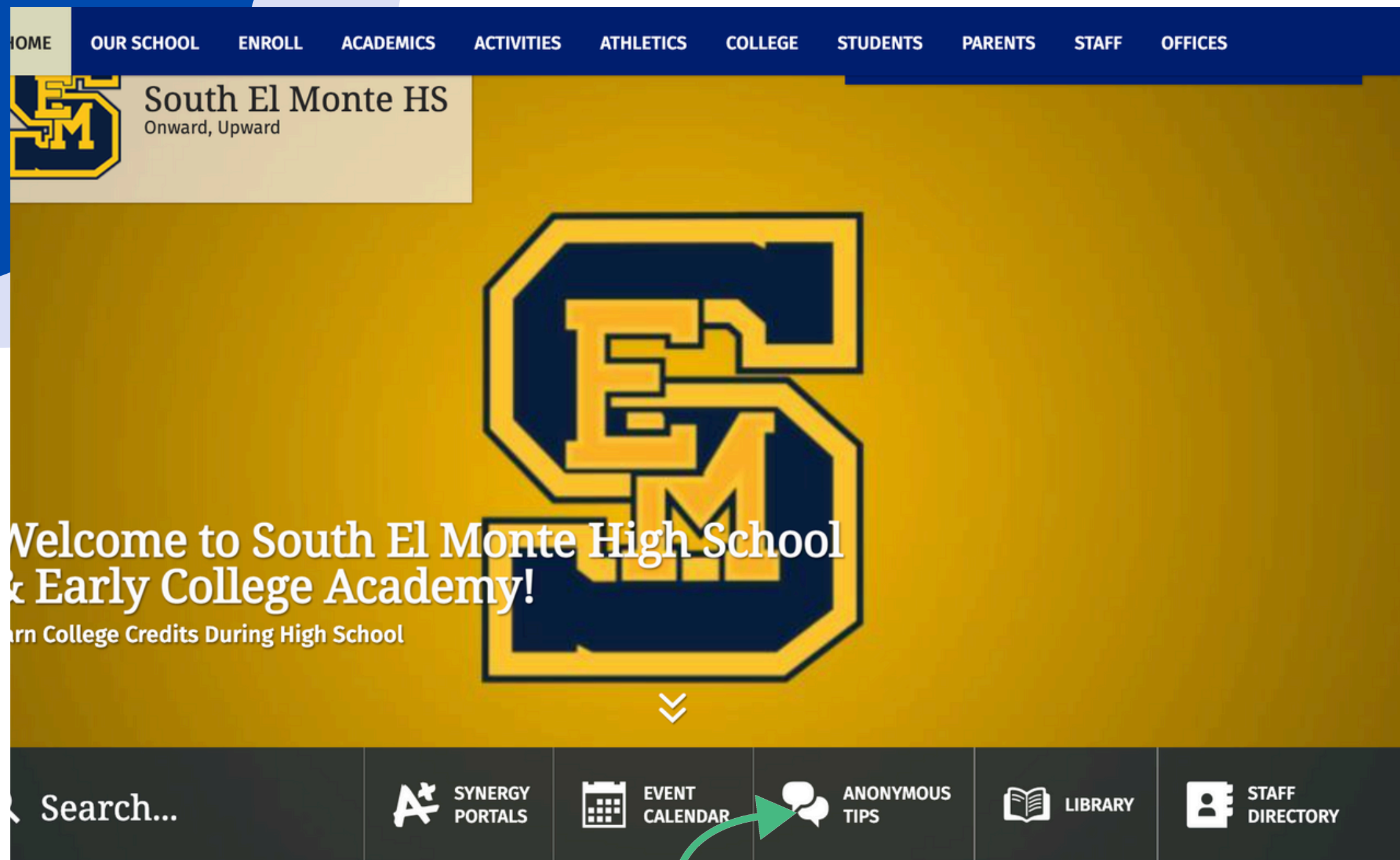
Wellness Center Coordinator

School Resource Officer(SRO)

We have a full-time Los Angeles County Sheriff Deputy. **Deputy Reyes** is available to answer questions regarding law-related issues and handles the safety of students and staff.



REPORTING/ANONYMOUS TIPS



"IF YOU SEE
SOMETHING,
SAY
SOMETHING"

Anyone can submit an anonymous report online through our school website's main page. You are encouraged to do so.



Let's keep SEMHS A Safe place!

Have an awesome school year!

