

**Project:** 4J Security Improvements Projects (2207)  
**Title:** Addendum No. 003  
**Date:** April 7, 2023  
**From:** KC Eck, PIVOT Architecture  
**To:** Interested Bidders

1. General Information

1. This Addendum is in response to Bidder questions and some revisions made during the bid walk through.

2. Response to Bidder Questions

1. Please provide Door, Frame & Relite elevations showing the dimensions & door & frame types.  
*See revised sheets A02-A, A03-A, A03-A, and A05-B*
2. Opening SH2 on the door schedule is showing a width of 4'8". On page A03-A it is showing that the opening has a relite. Is the 4'8" the door size or the out to out of the frame?  
*4'-8" is the frame size, see revised sheets A02-A and A03-A*
3. Opening S03 on the door schedule is showing a width of 5'2". Also showing that the opening has a relite. Same question, is the 5'2" the door size or the out to out of the frame?  
*5'-2" is the frame size, see revised sheets A03-B and A05-B*
4. Detail 4/A05-A notes the gates will have a perforated panel cover. I am unsure if this refers to Section 05 50 00 Part 2.02; A. Woven Metal Mesh. Please advise.  
*Perforated panel cover is referring to a 12 gauge steel panel with 1/4 round perforations at 3/8" staggered centers, see A05-A*
5. Detail 7/A05-A refers to Detail 2/A03-C for note on personal gate. This detail is not found. Please advise.  
*Note has been removed.*
6. Detail 1 & 2/A03-A notes the woven wire size as 4" square while Detail 7/A03-A notes the size as 2" square. Please confirm size.  
*7/A03-A is correct, see revised A03-A*

3. Approved Substitution Request

1. N/A

4. Alternates

1. N/A

5. Changes to the Project Manual

1. CHANGE Section 08 1116 1.07 B. Aluminum Doors and Frames 5 year Workmanship Warranty to Two year Workmanship Warranty.
2. CHANGE Section 32 3113 1.08 A. 2. Chain Link Fences and Gates 5 year Workmanship Warranty to Two year Workmanship Warranty.

6. Changes to the Drawings

1. REPLACE Sheet A02-A
2. REPLACE Sheet A03-A
3. REPLACE Sheet A05-A
4. REPLACE Sheet A03-B
5. REPLACE Sheet A05-B
6. REPLACE Sheet A02-C
7. REPLACE Sheet E01-C
8. REPLACE Sheet E02-C
9. REPLACE Sheet E12-C

End of Addendum # 003

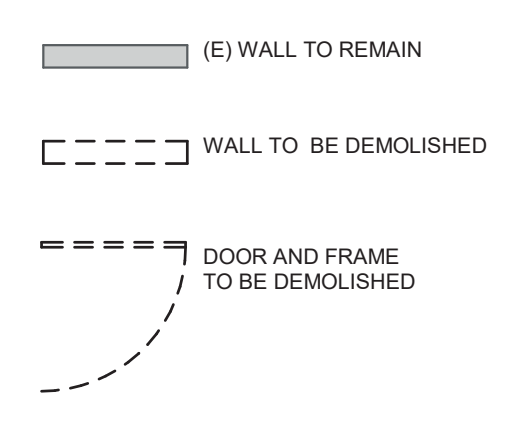
**GENERAL NOTES - DEMOLITION**

- A. PROTECT ALL EXISTING CONSTRUCTION TO REMAIN.
- B. COORDINATE WITH OWNER FOR REMOVAL AND STORAGE OF (E) EQUIPMENT AND CASEWORK TO BE SALVAGED.
- C. REMOVE EXISTING DOOR WALL STOPS WHERE DOORS NO LONGER EXIST.
- D. PROTECT (E) FLOORS, WALLS, CEILING & FINISHES TO REMAIN.
- E. REMOVE AND STORE MATERIAL AND EQUIPMENT WHERE INDICATED TO BE SALVAGED OR RELOCATED.
- F. WHEN REMOVING FLOOR FINISHES REMOVE ALL ADHESIVE, GROUT, RESIDUE AND DEBRIS.
- G. COORDINATE WITH ELECTRICAL FOR ITEMS TO BE DEMOLISHED, REMOVED, AND/OR SALVAGED.
- H. COORDINATE WITH MECHANICAL/PLUMBING FOR ITEMS TO BE DEMOLISHED, AND/OR SALVAGED.
- I. COORDINATE WITH OWNERS MODULAR SYSTEMS FURNITURE CONTRACTOR FOR CHANGES TO FURNITURE AND SYSTEM CASEWORK.
- J. COORDINATE WITH OWNER FOR ANY CEILING/FLOORING DISRUPTION REGARDING ACM.

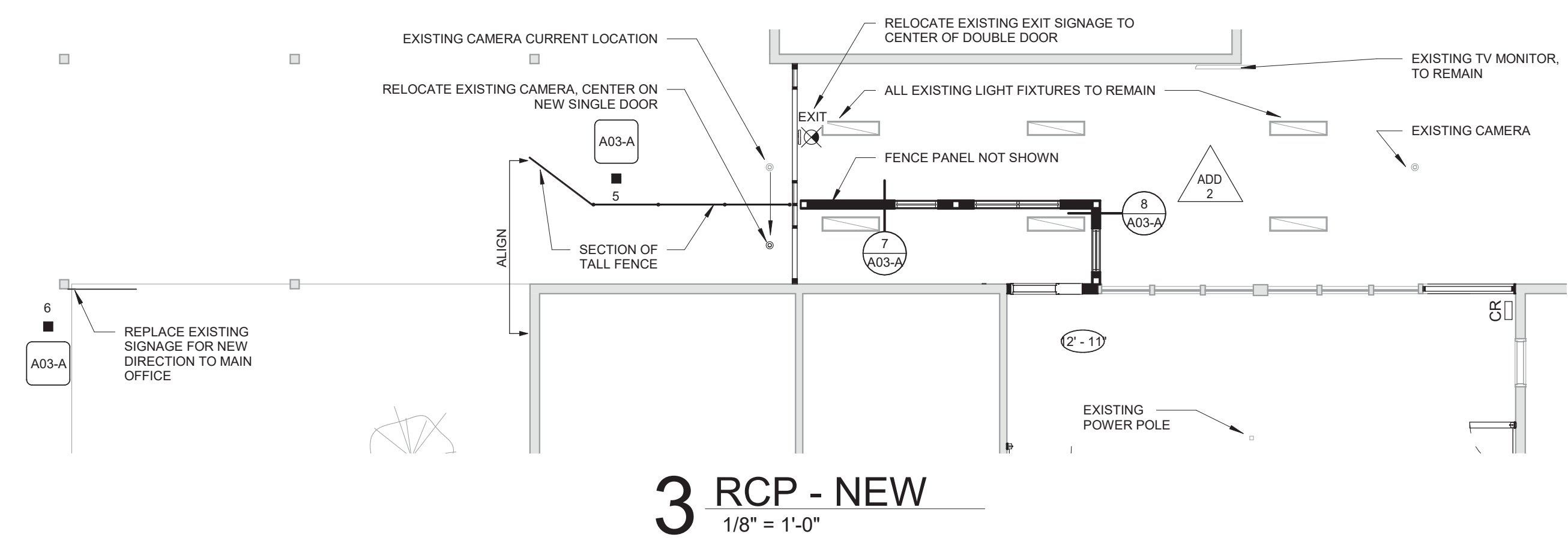
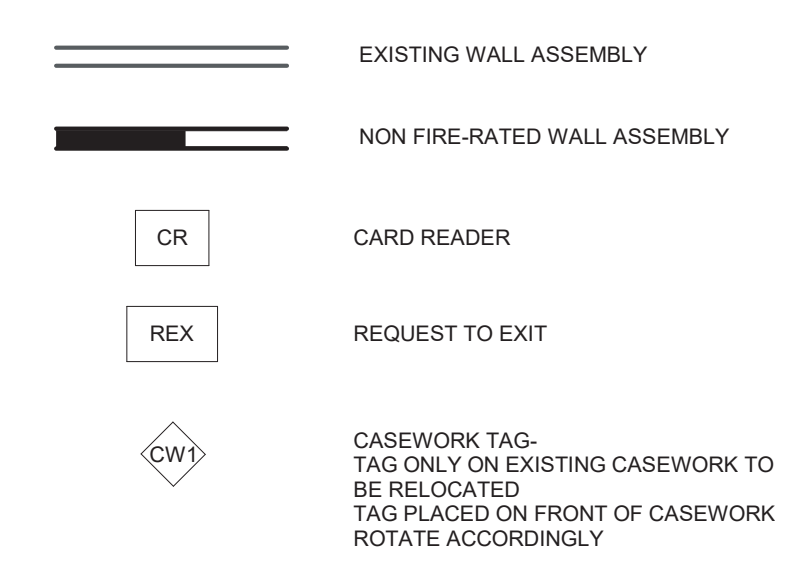
**GENERAL NOTES - FLOOR PLANS**

- A. DIMENSIONS SHOWN ARE TO THE FACE OF STUD, CONCRETE OR MASONRY UNLESS OTHERWISE NOTED. CONTACT THE ARCHITECT FOR ANY ADDITIONAL DIMENSIONS REQUIRED TO LAY OUT THE WORK.
- B. MASONRY DIMENSIONS ARE THE ACTUAL MASONRY UNIT SIZES UNLESS OTHERWISE NOTED.
- C. REPAIR PATCHED SURFACES THAT ARE DAMAGED, LIFTED, DISCOLORED, OR SHOWING OTHER IMPERFECTIONS DUE TO PATCHING WORK. IF DEFECTS ARE DUE TO CONDITION OF SUBSTRATE, REPAIR SUBSTRATE PRIOR TO REPAIRING FINISH.
- D. WHERE (E) FLOOR IS TO REMAIN, PROTECT FROM DAMAGE. PATCH AND REPAIR ANY HOLES IN CONCRETE SLAB CAUSED BY DEMOLITION OF EXISTING WALLS, (I.E. WALL ANCHORS).
- E. PATCH AND REPAIR ANY WALL AND CEILING LOCATIONS WHERE EXISTING ELECTRICAL AND VOICEDATA OUTLET, JUNCTION BOXES, AND SIMILAR WALL MOUNTED ITEMS ARE REMOVED OR ABANDONED WITHIN THE WORK AREA.
- F. PATCH AND REPAIR WALL AND CEILING SURFACES WHERE MODULAR SYSTEMS FURNITURE WAS REMOVED BY SEPARATE CONTRACTOR.
- G. PATCH AND REPAIR ANY WALL LOCATIONS WHERE EXISTING WALL COVERING HAS BEEN REMOVED WITHIN THE WORK AREA.
- H. PATCH AND REPAIR ANY WALL LOCATIONS WHERE EXISTING WALL BASE HAS BEEN REMOVED WITHIN THE WORK AREA.
- I. PATCH AND REPAIR ANY WALL LOCATIONS WHERE EXISTING EQUIPMENT, ACCESSORIES, HARDWARE OR OTHER SURFACE MOUNTED ELEMENTS HAVE BEEN REMOVED WITHIN THE WORK AREA.
- J. VERIFY LOCATION OF PROX-CARD READERS, AUTOMATIC DOOR OPENERS AND WIRELESS ACTUATORS WITH ARCHITECT DURING ROUGH-IN PHASE OF THE WORK.
- K. COORDINATE WITH OWNER FOR ANY CEILING/FLOORING DISRUPTION REGARDING ACM.

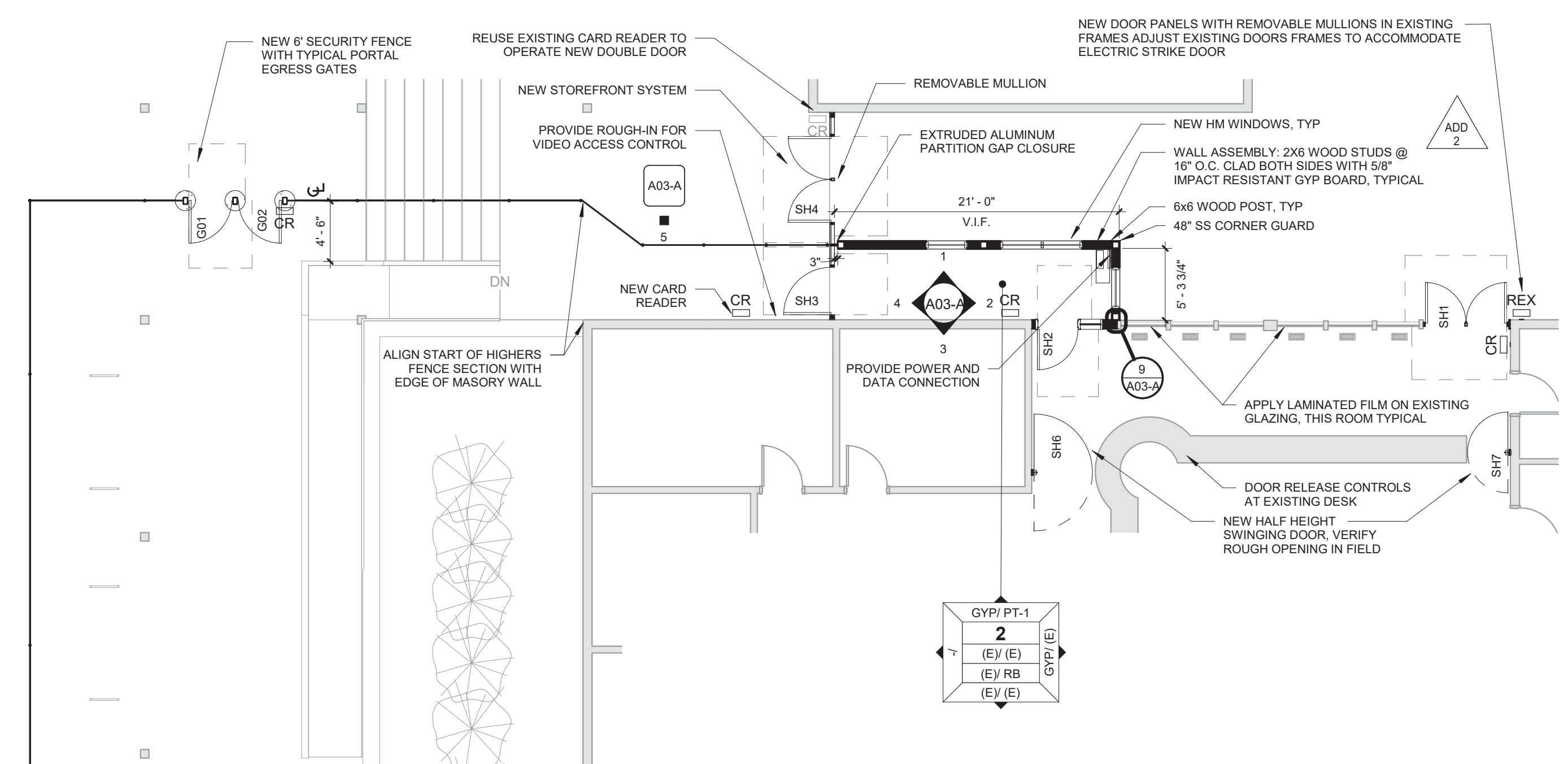
**DEMOLITION LEGEND**



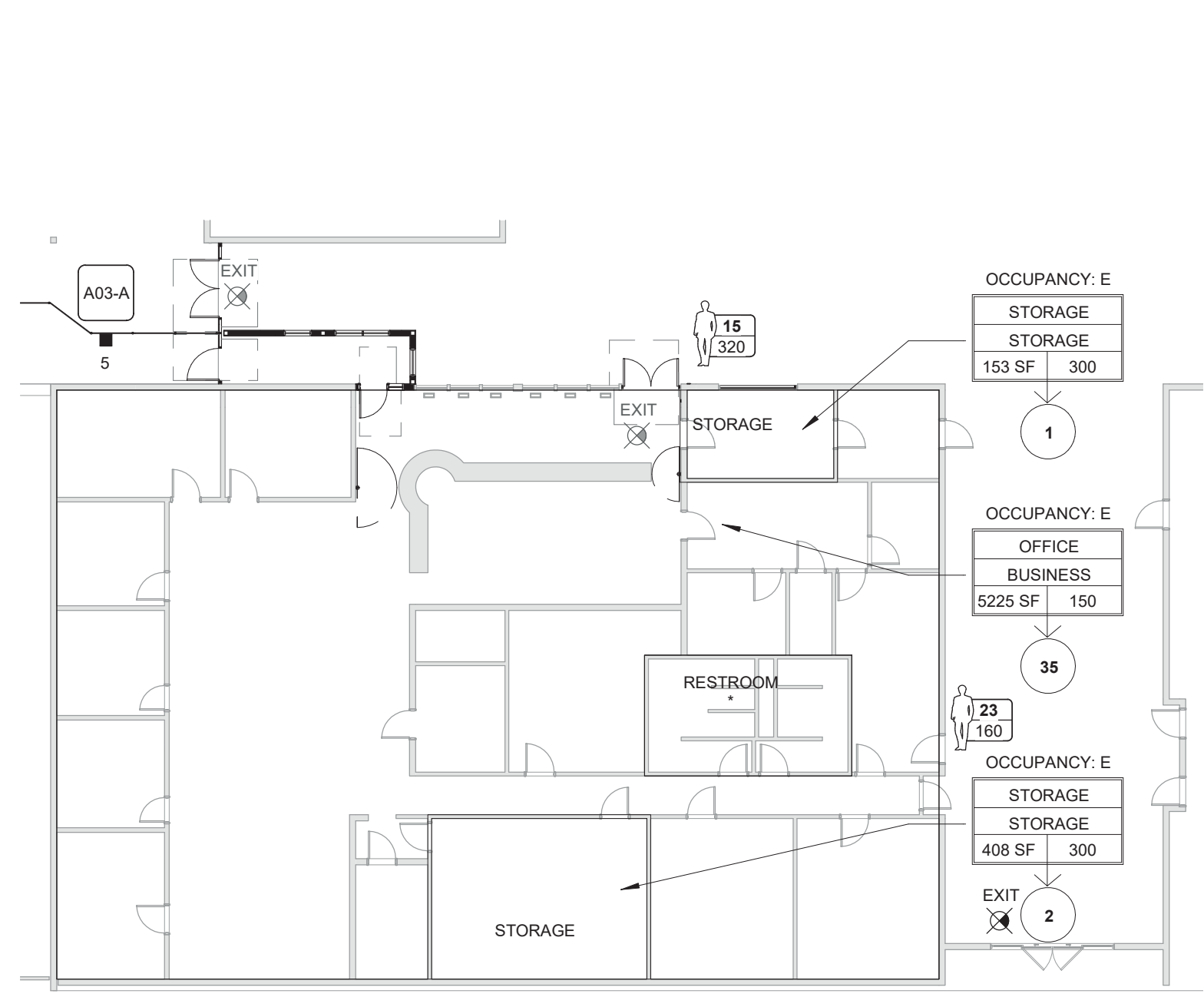
**WALL FILL PATTERNS:**



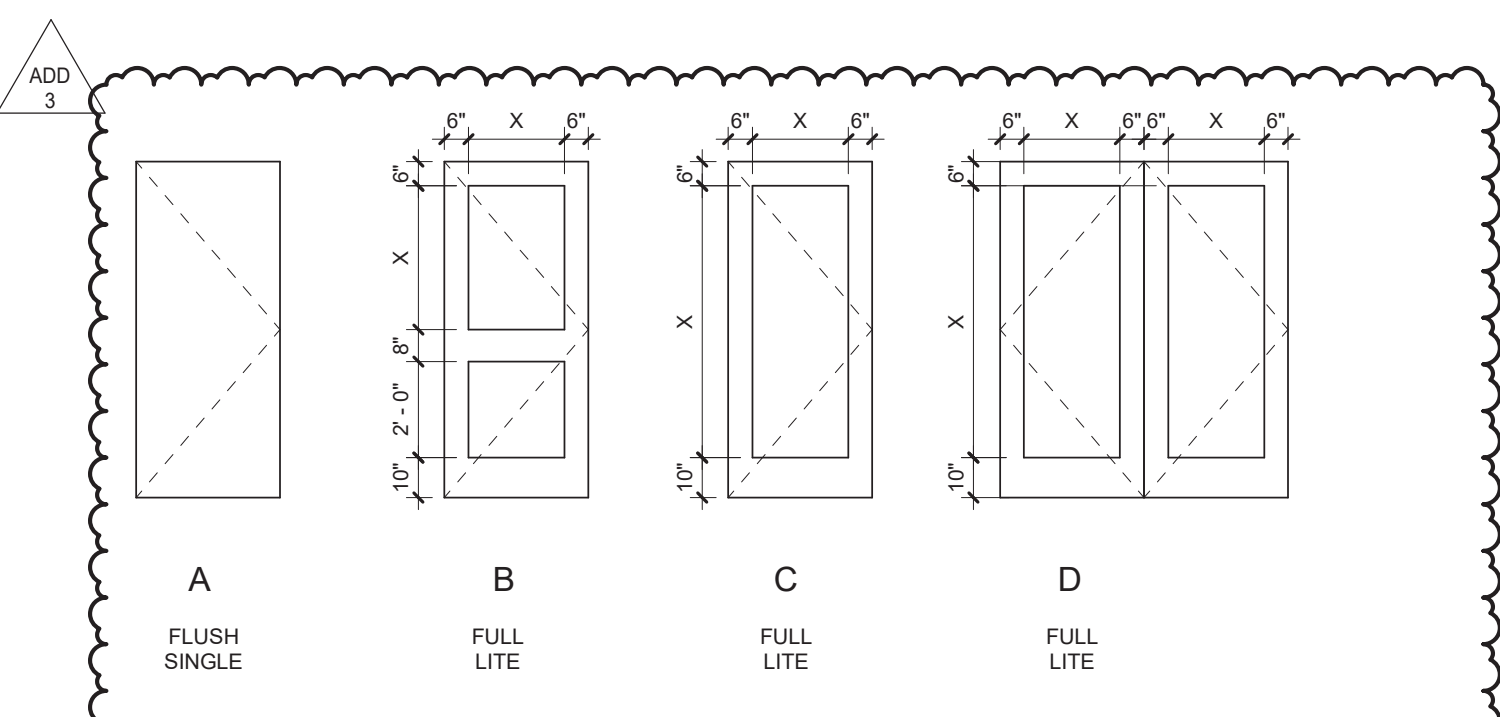
**3 RCP - NEW**  
1/8" = 1'-0"



**2 FLOOR PLAN - NEW CONSTRUCTION**  
1/8" = 1'-0"



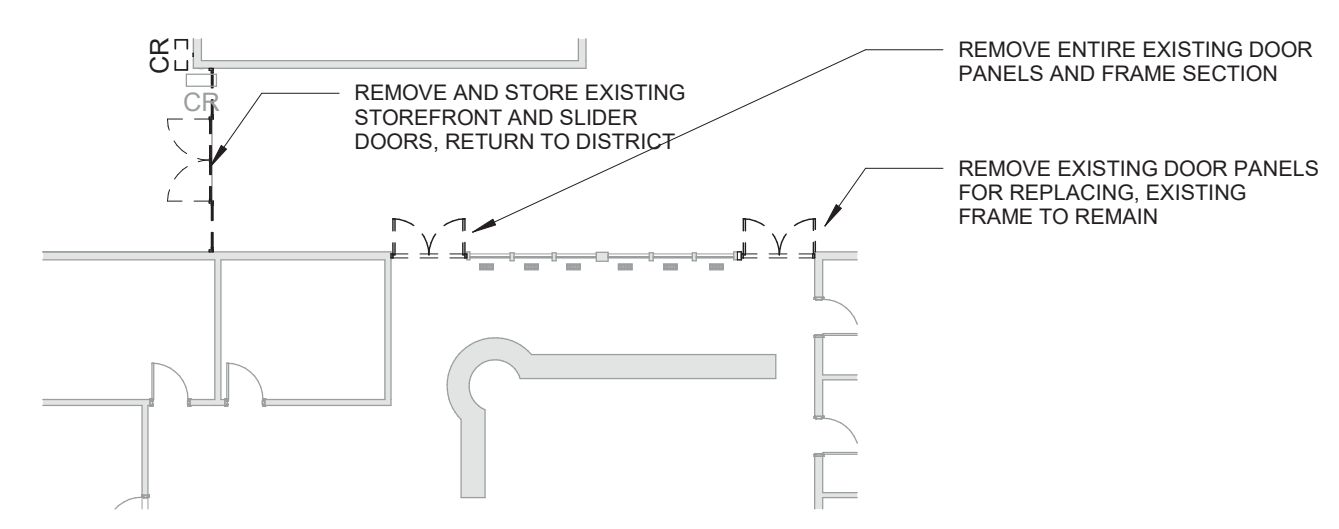
**6 EGRESS PLAN - MAIN OFFICE**  
1/16" = 1'-0"



**DOOR PANEL TYPES**

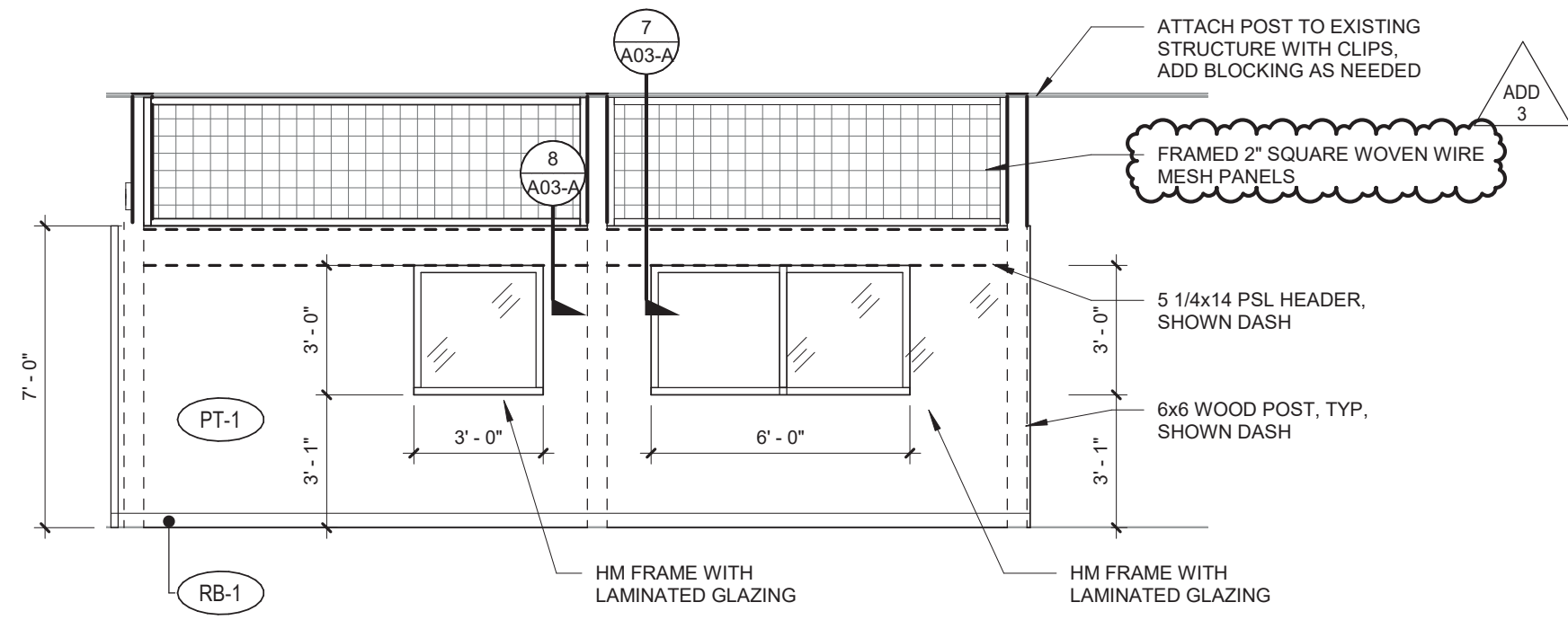
**DOOR SCHEDULE - SH**

MARK	WIDTH	HEIGHT	DOOR PANEL		DOOR FRAME		HARDWARE GROUP	COMMENTS
			TYPE	MATERIAL	MATERIAL	FINISH		
SH1	6'-0"	7'-0"	D	WOOD	(E)	PAINT	02	CONTROL ACCESS - SEE HARDWARE SPECIFICATION
SH2	3'-0"	7'-0"	C	WOOD	HM	PAINT	01	WITH SIDE LITE - CONTROL ACCESS - SEE HARDWARE SPECIFICATION
SH3	3'-6"	7'-0"	C	ALUM	ALUM	PAINT	03	CONTROL ACCESS - SEE HARDWARE SPECIFICATION
SH4	6'-4"	7'-0"	D	ALUM	ALUM	PER MANUFACTURER	03	CONTROL ACCESS - SEE HARDWARE SPECIFICATION
SH6	4'-4"	3'-6"	-	ALUM	ALUM	PER MANUFACTURER	PER MANUFACTURER	HALF HEIGHT ALUMINUM TRAFFIC DOOR - VERIFY OPENING IN FIELD
SH7	3'-0"	3'-6"	-	ALUM	ALUM	PER MANUFACTURER	PER MANUFACTURER	HALF HEIGHT ALUMINUM TRAFFIC DOOR - VERIFY OPENING IN FIELD

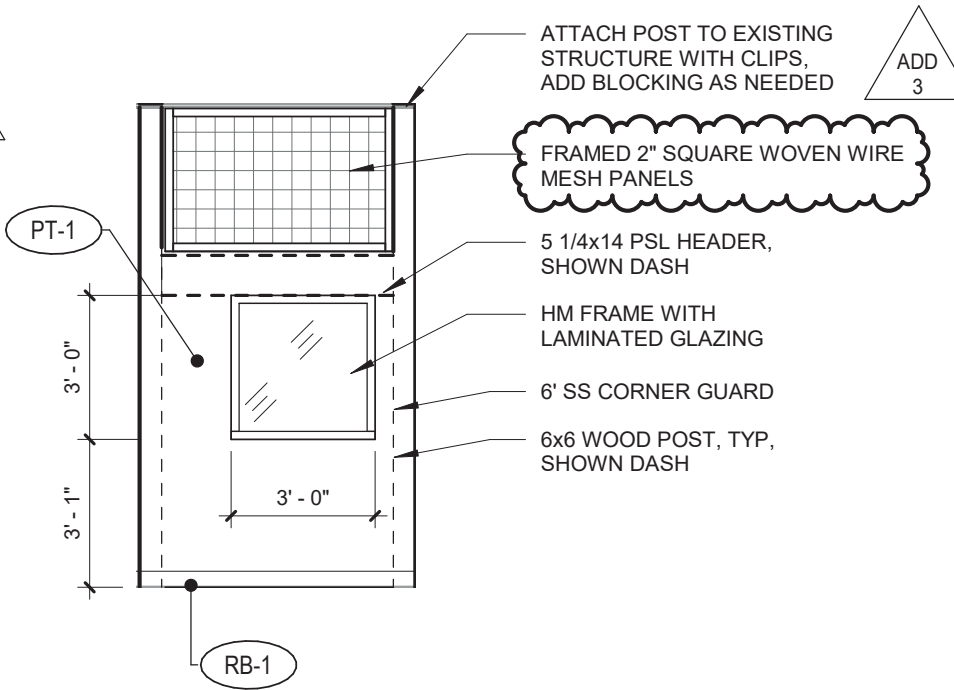


**1 FLOOR PLAN - DEMOLITION**  
1/16" = 1'-0"

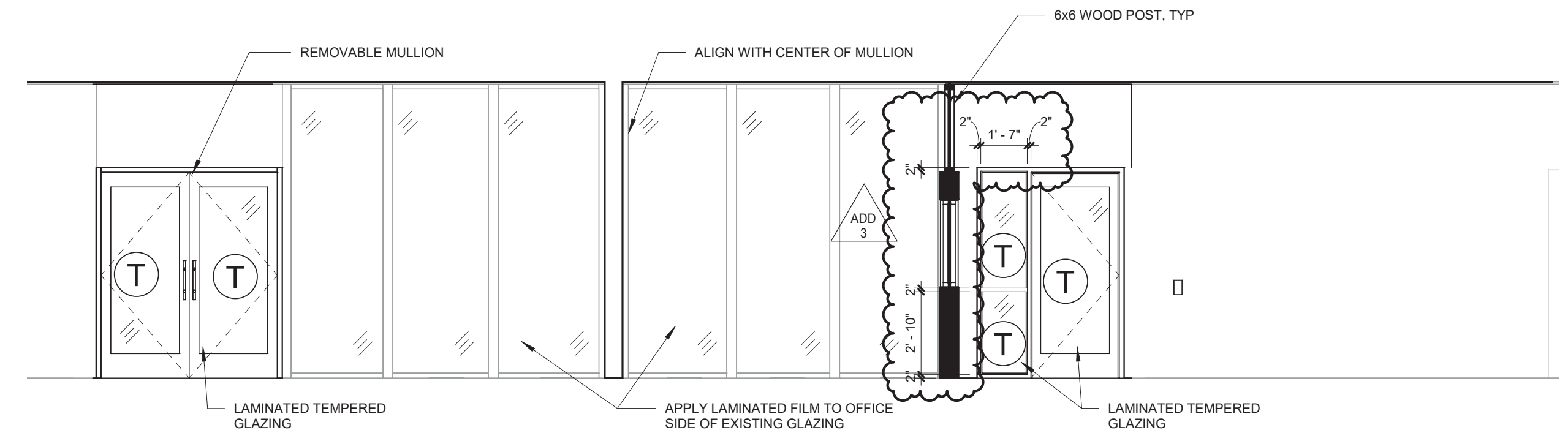




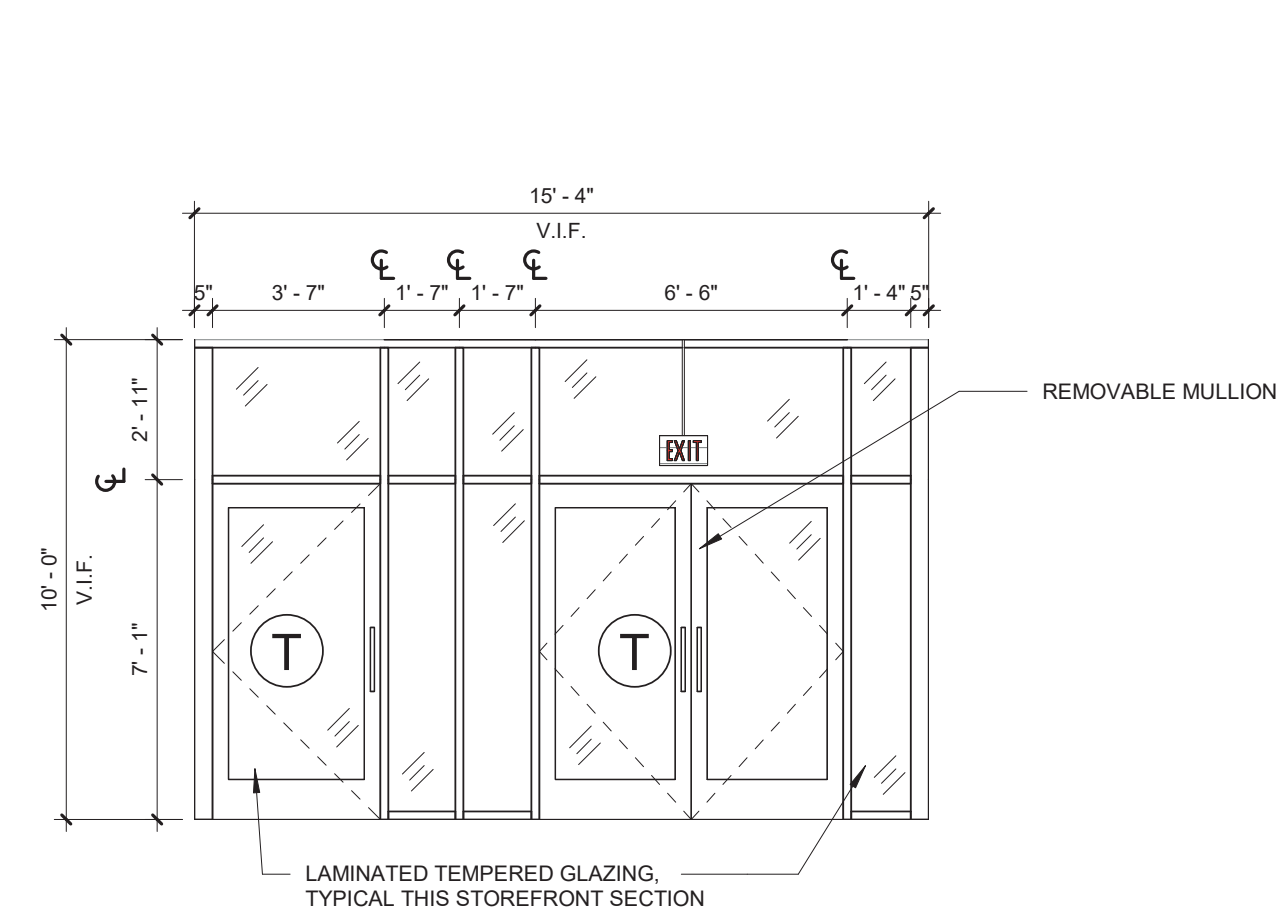
**1 HS - SHELDON - ENTRY VESTIBULE - N**  
1/4" = 1'-0"



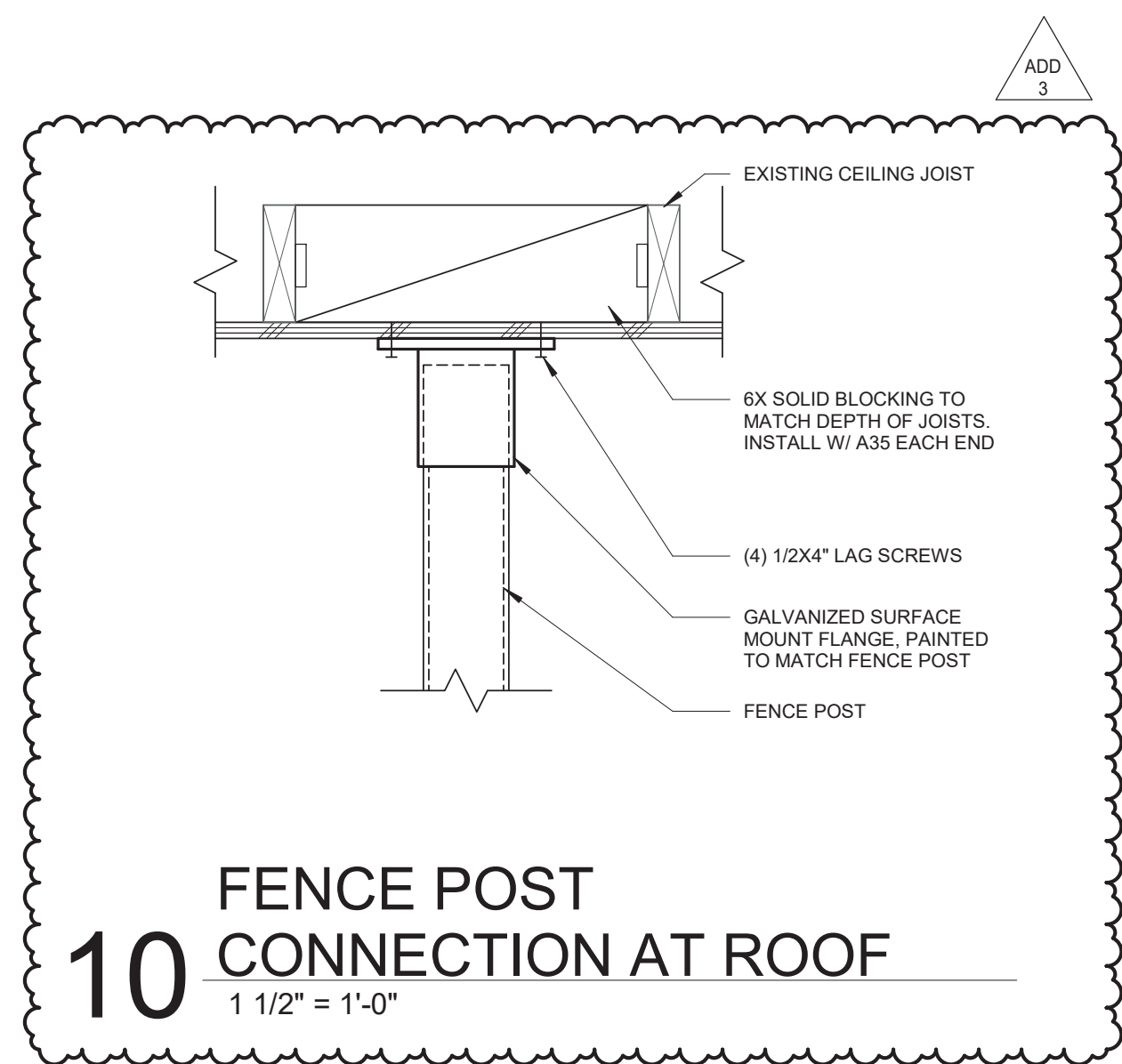
**2 HS - SHELDON - ENTRY VESTIBULE - E**  
1/4" = 1'-0"



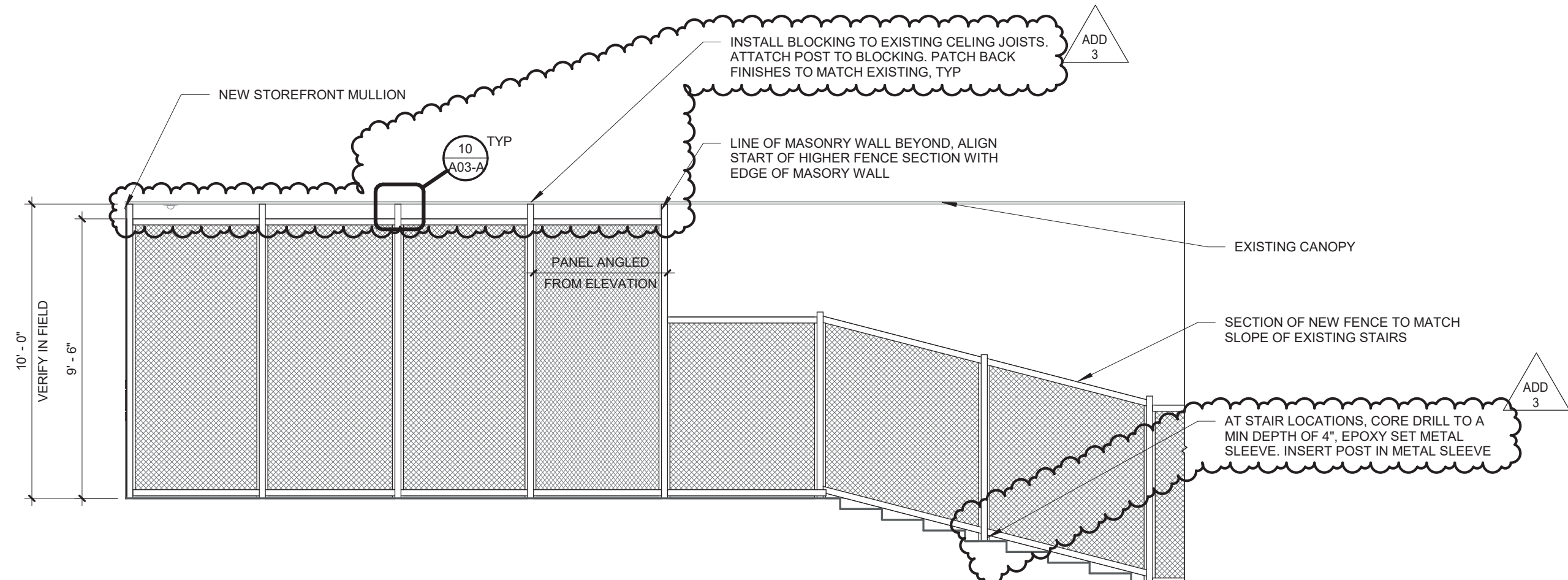
**3 HS - SHELDON - ENTRY VESTIBULE - S**  
1/4" = 1'-0"



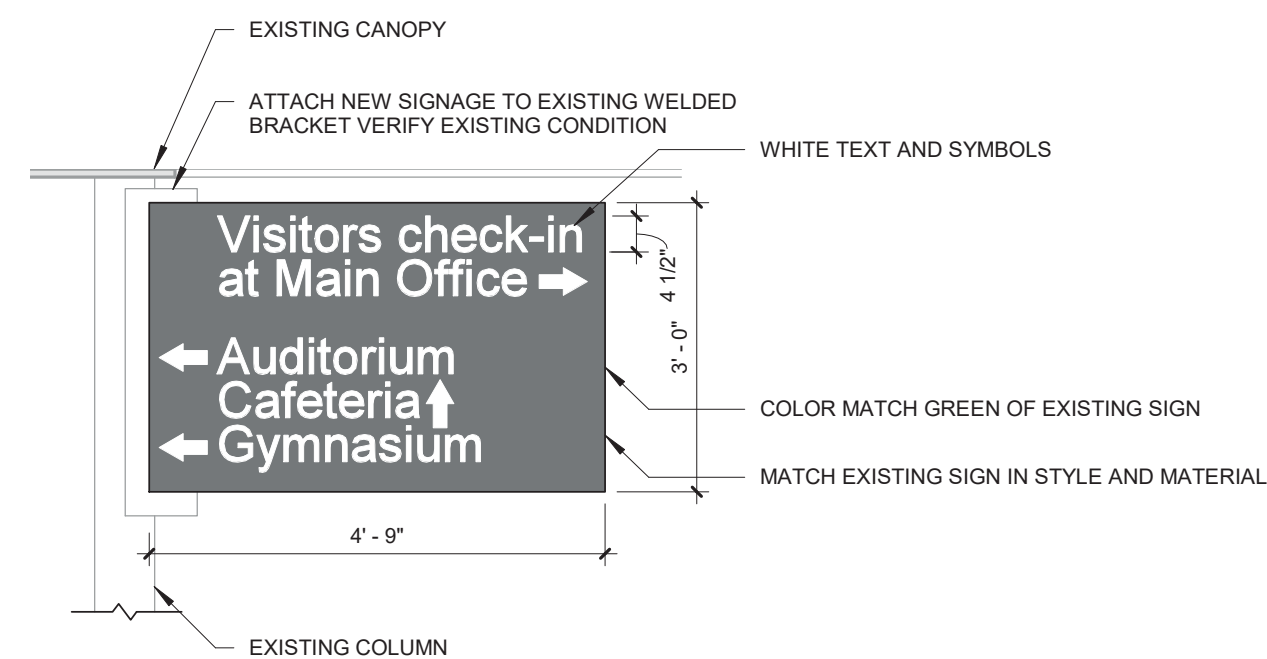
**4 HS - SHELDON - ENTRY VESTIBULE - W**  
1/4" = 1'-0"



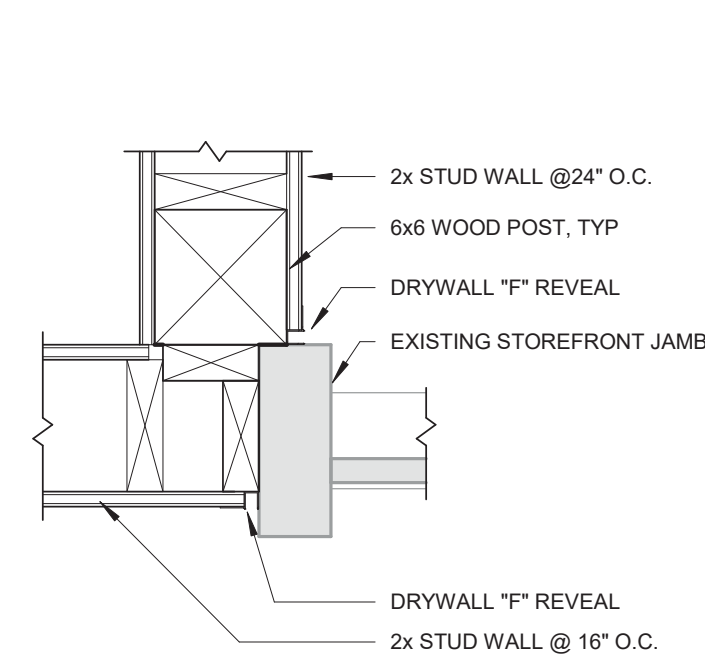
**10 FENCE POST CONNECTION AT ROOF**  
1 1/2" = 1'-0"



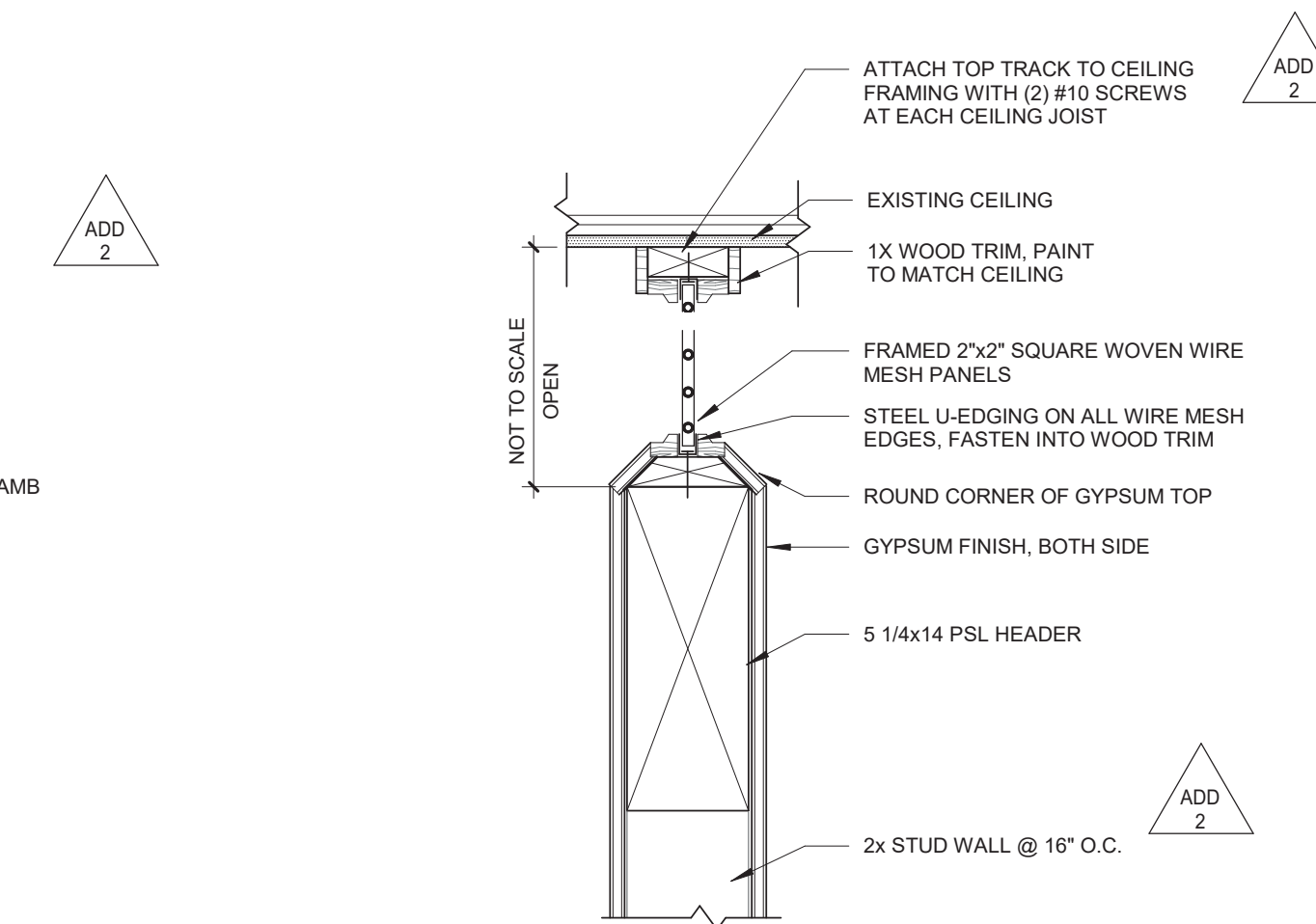
**5 SHELDON FENCE ELEVATION**  
1/4" = 1'-0"



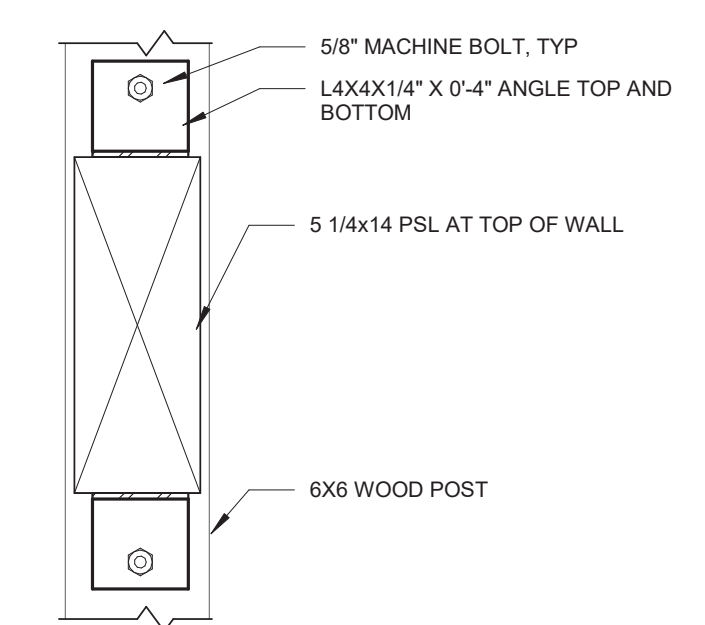
**6 REPLACEMENT SIGNAGE**  
1/2" = 1'-0"



**9 WALL DETAIL**  
1 1/2" = 1'-0"



**7 HEAD DETAIL**  
1 1/2" = 1'-0"

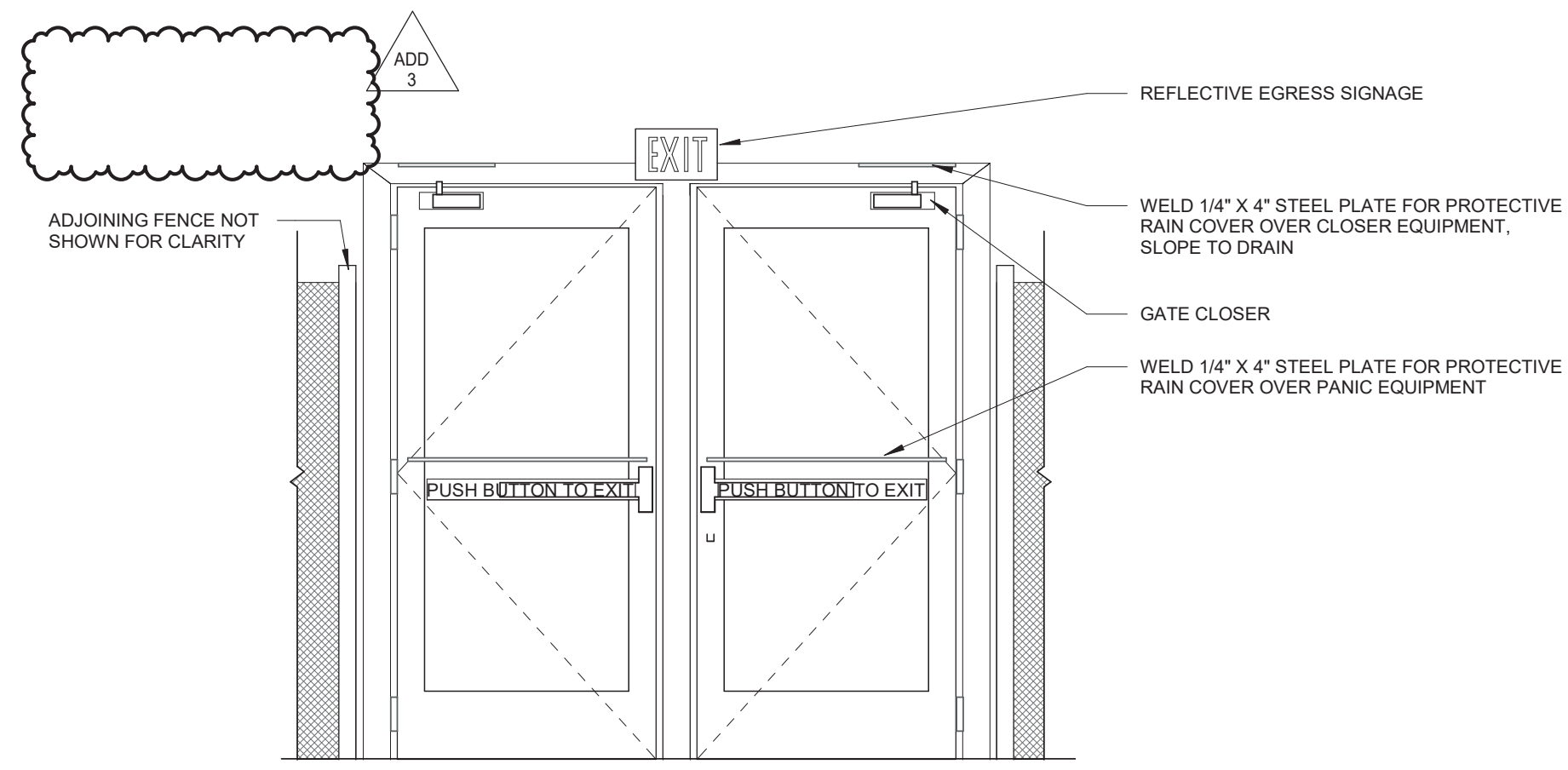


**8 HEADER CONNECTION**  
1 1/2" = 1'-0"

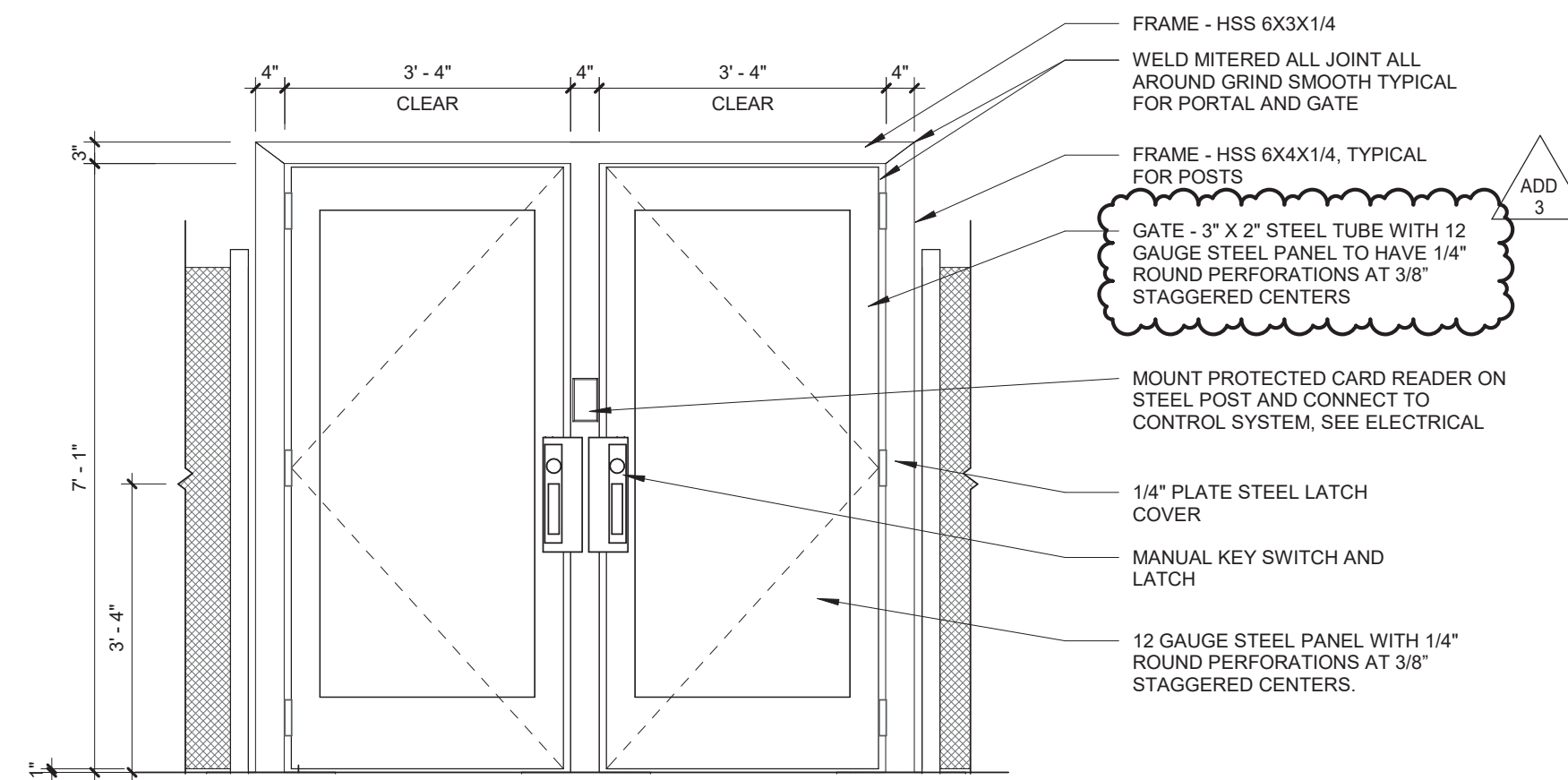
REVISIONS:

#	DESCRP.	DATE
1	ADD 2	04/04/23
2	ADD 3	04/07/23

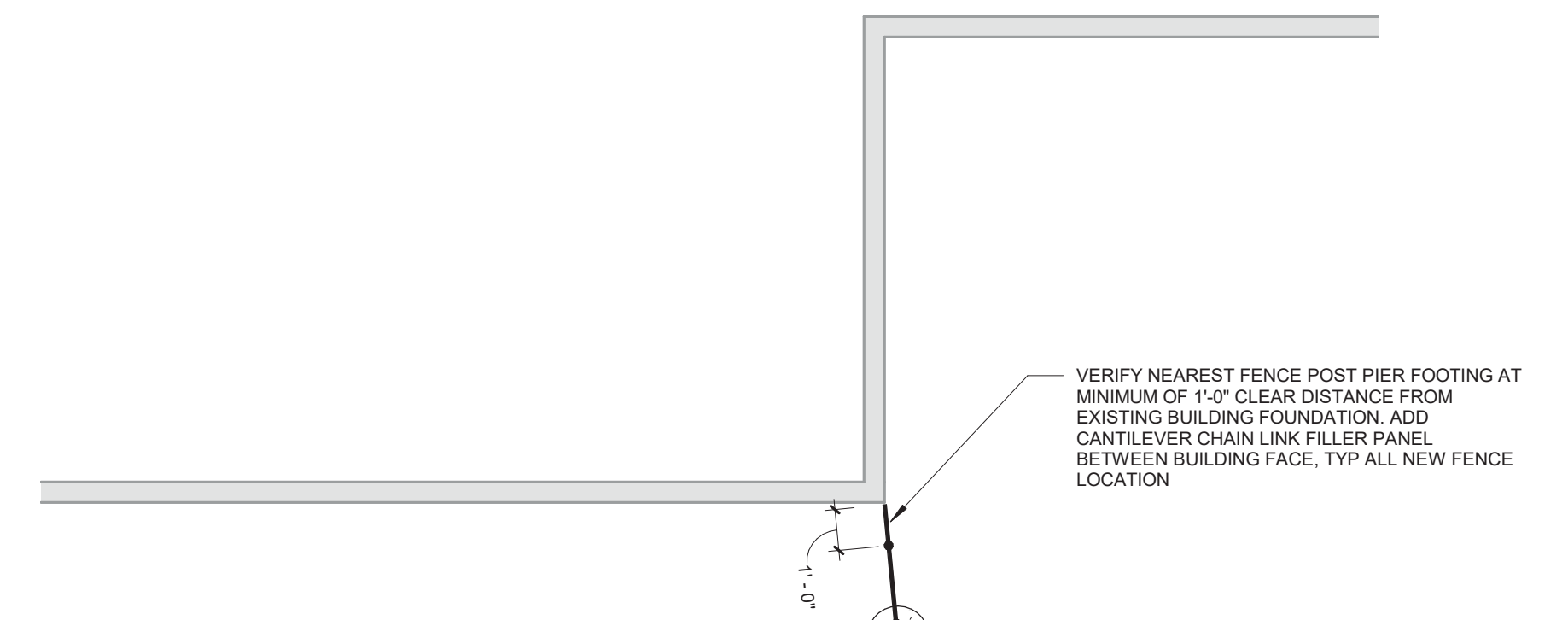




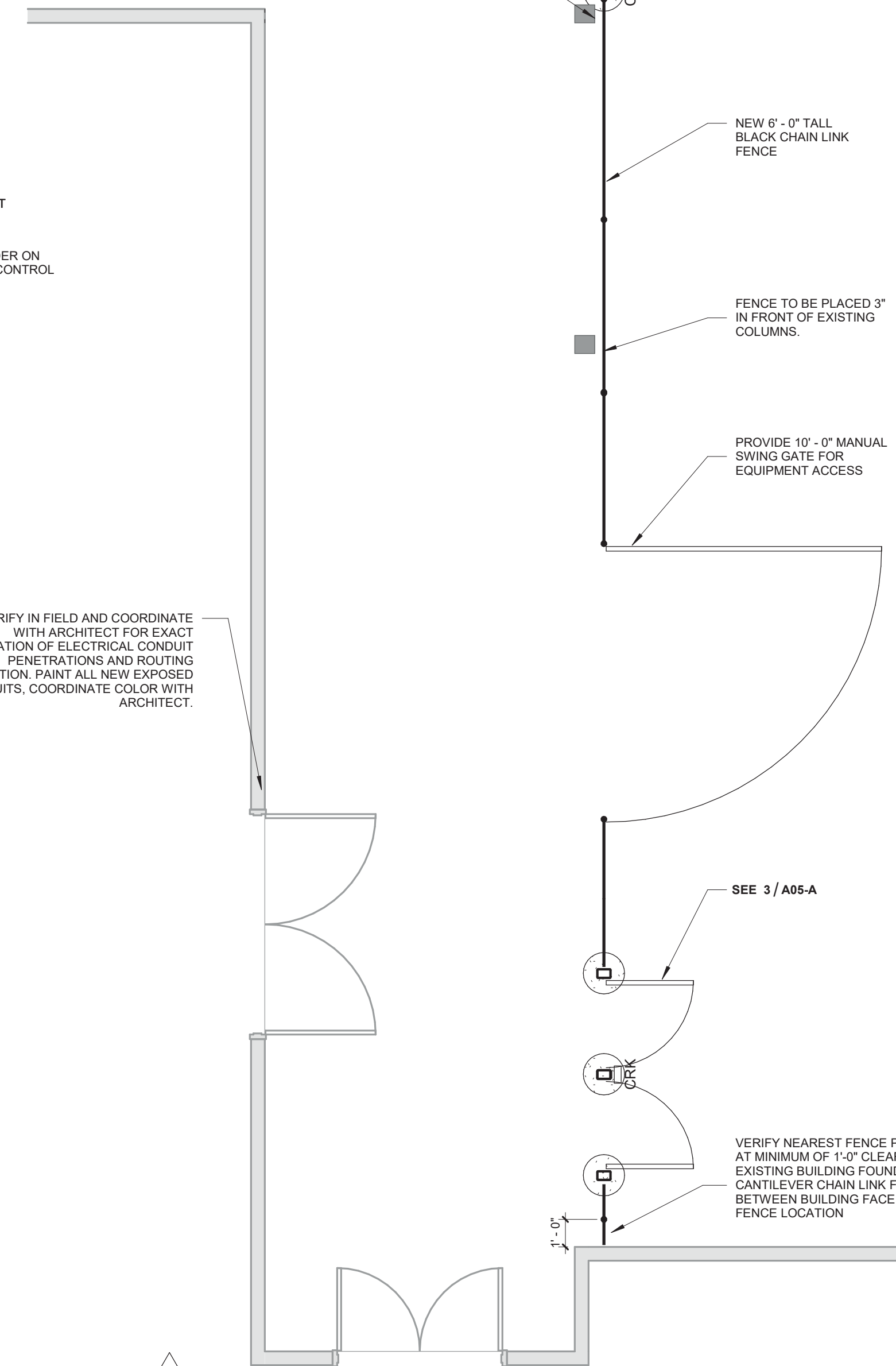
**7** DOUBLE GATE SECURED SIDE ELEVATION  
1/2" = 1'-0"



**4** DOUBLE GATE NON-SECURED SIDE ELEVATION  
1/2" = 1'-0"

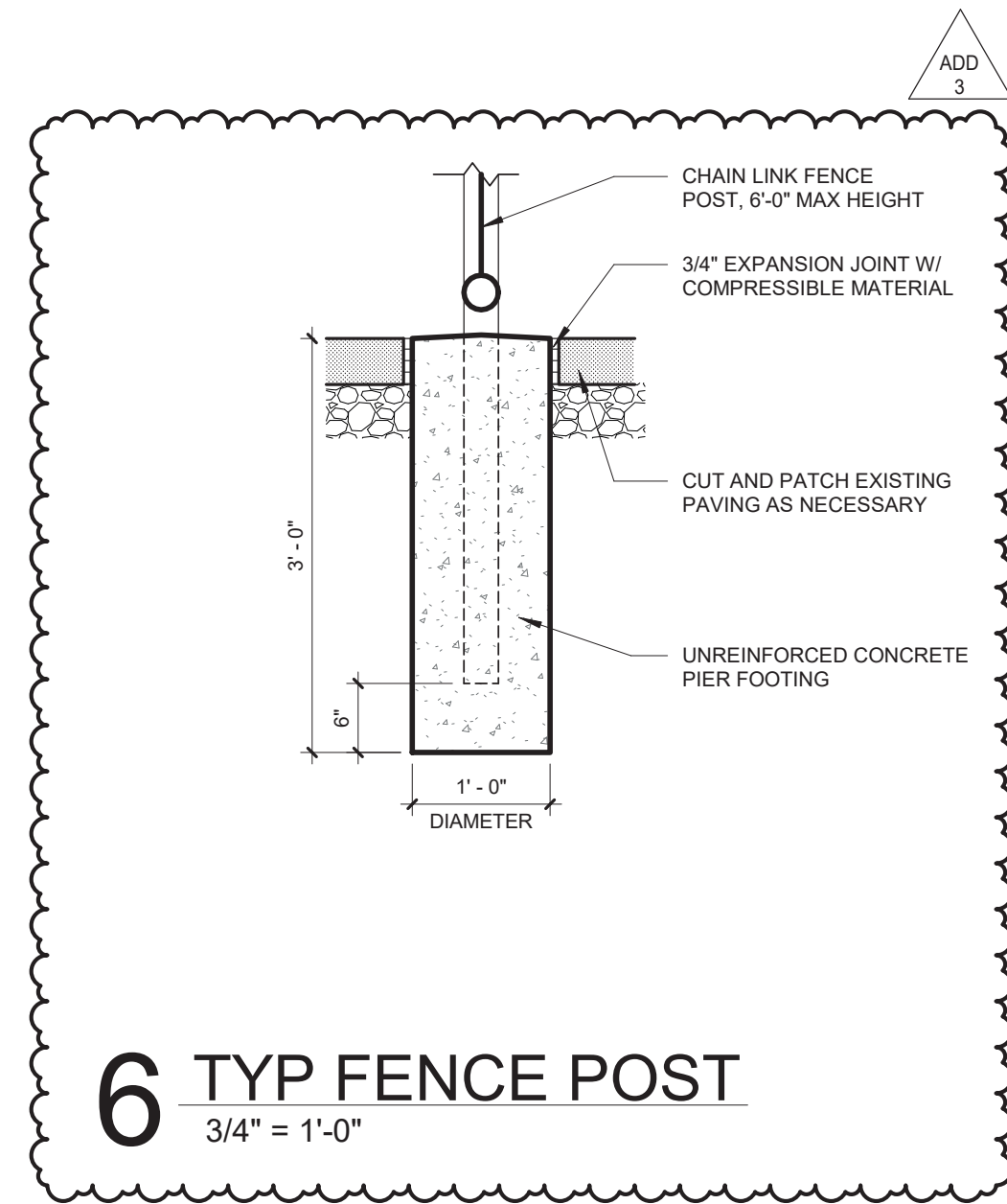


EXISTING 6" COLUMN, ROUT ELECTRICAL CONDUIT FROM OVERHEAD TO GATE DOWN BACKSIDE OF COLUMN. SEE ELECTRICAL.

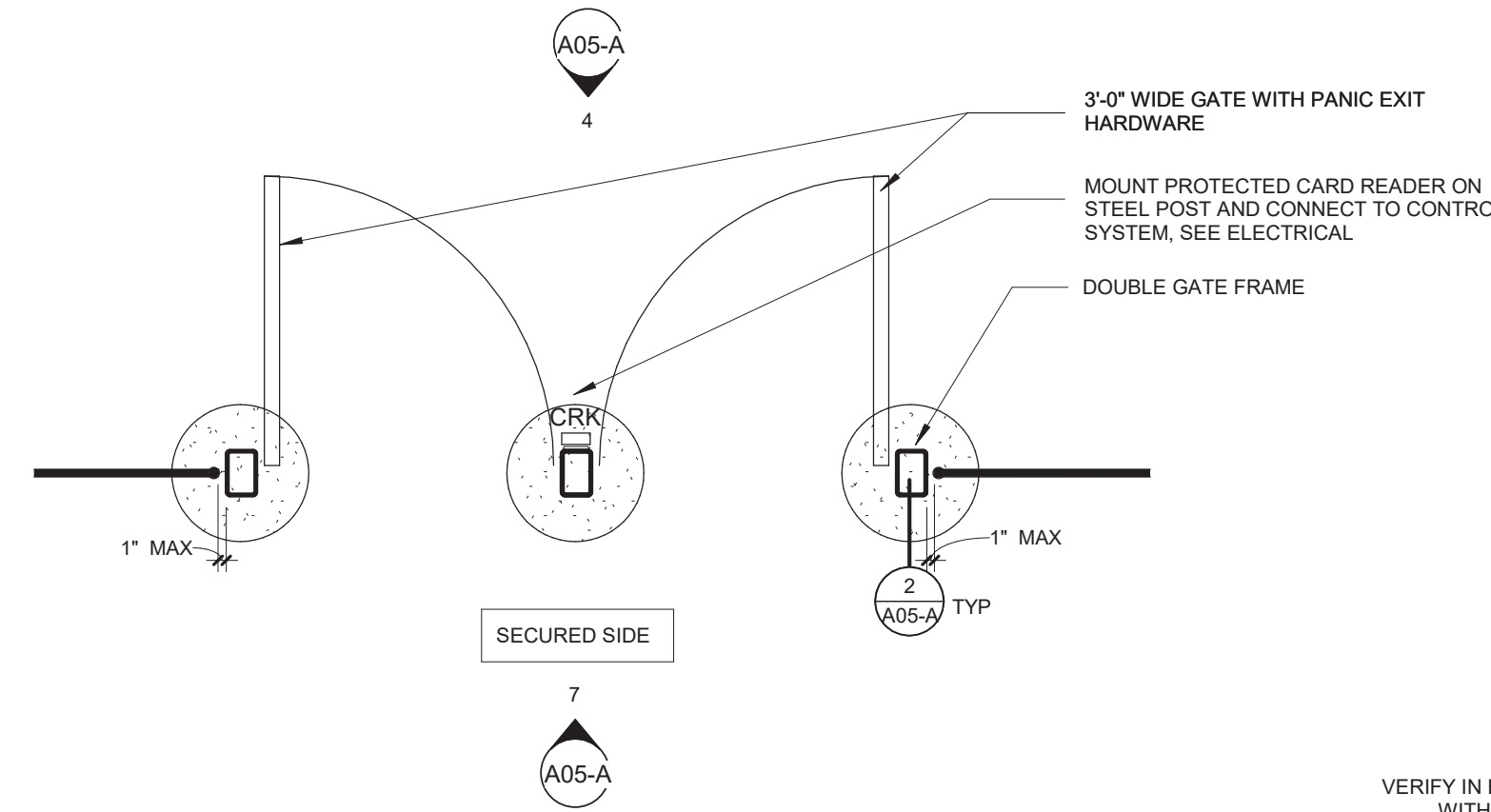


ADD 2

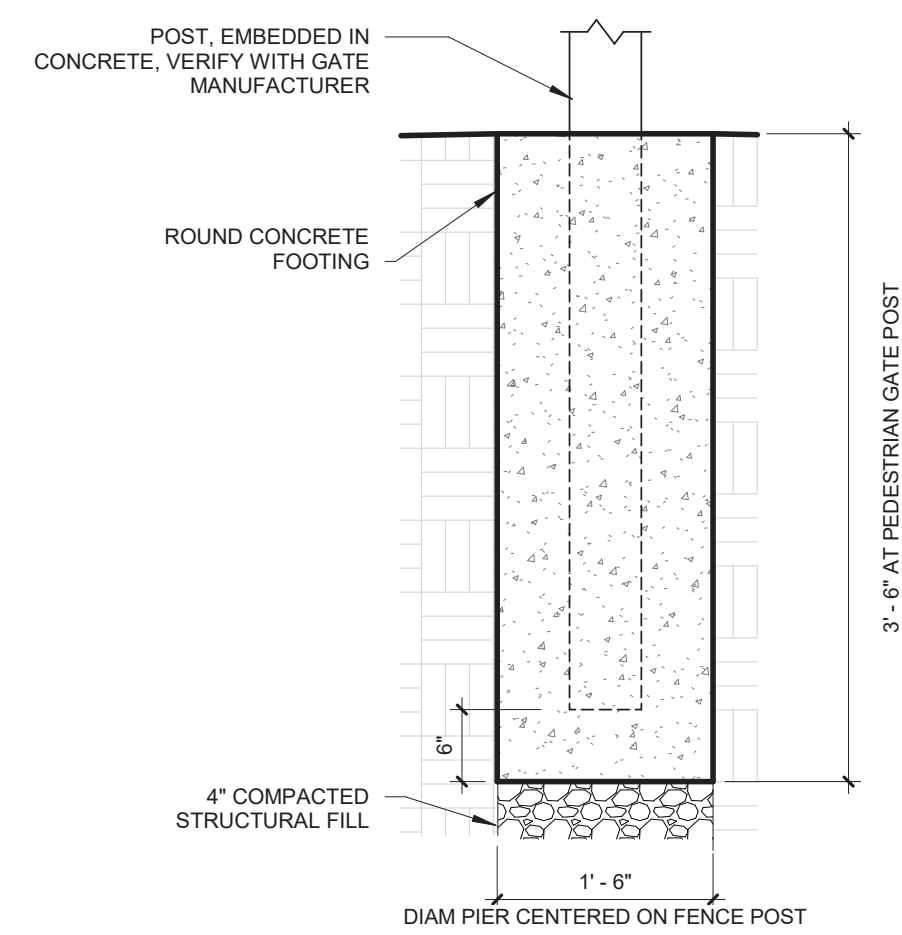
**1** DOUBLE GATES AT MECHANICAL PLAN  
1/4" = 1'-0"



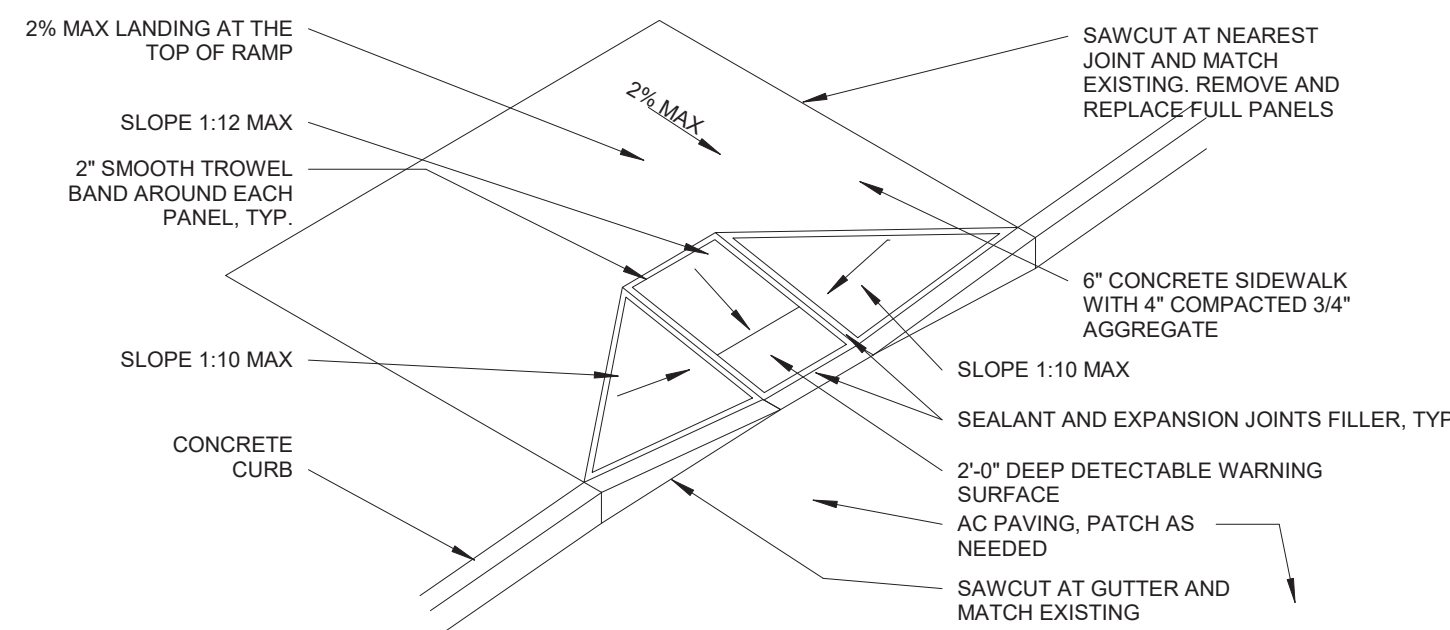
**6** TYP FENCE POST  
3/4" = 1'-0"



**3** DOUBLE GATE PLAN  
1/2" = 1'-0"



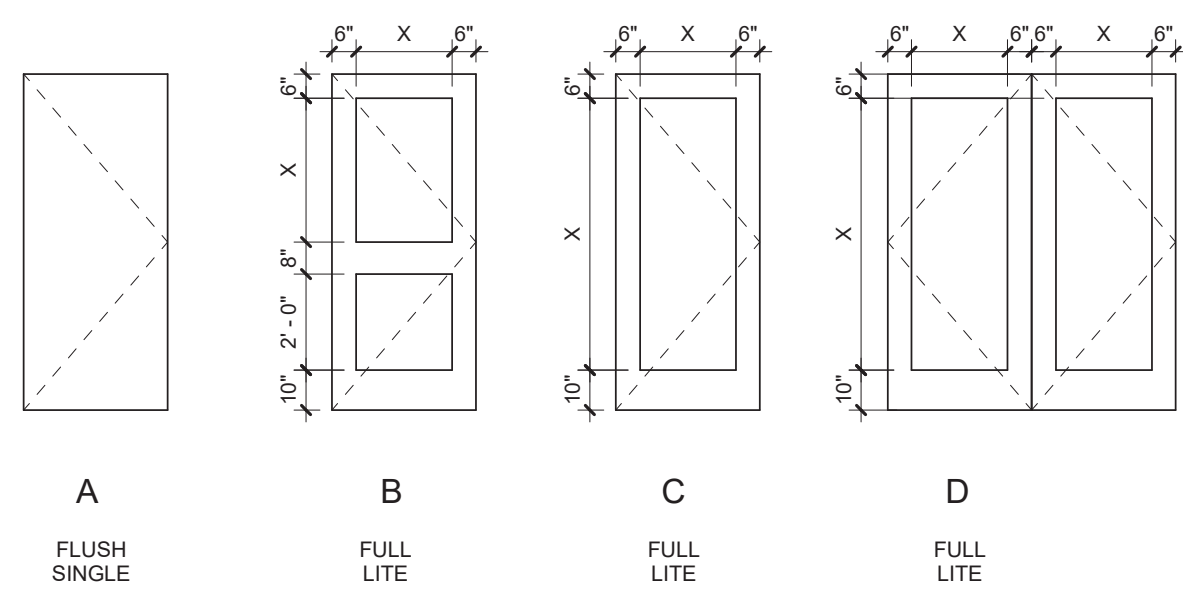
**2** FOOTING AT VEHICULAR / PEDESTRIAN GATE POST  
3/4" = 1'-0"



**8** CURB RAMP  
3/16" = 1'-0"

REVISIONS:	#	DESCRP.	DATE
	1	ADD 2	04/04/23
	2	ADD 3	04/07/23

ADD 3



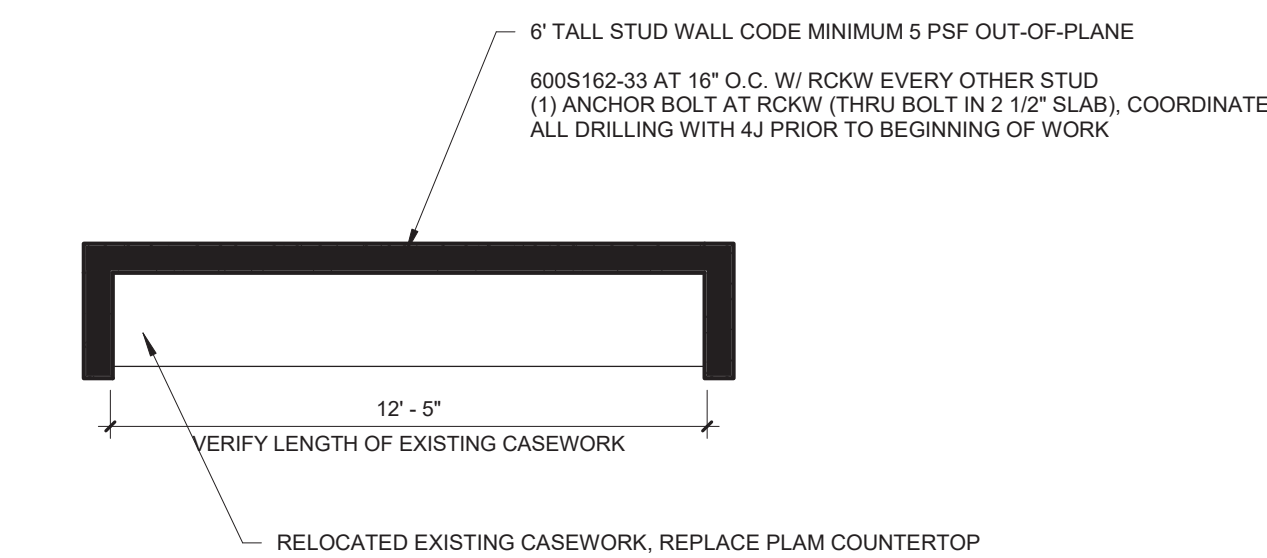
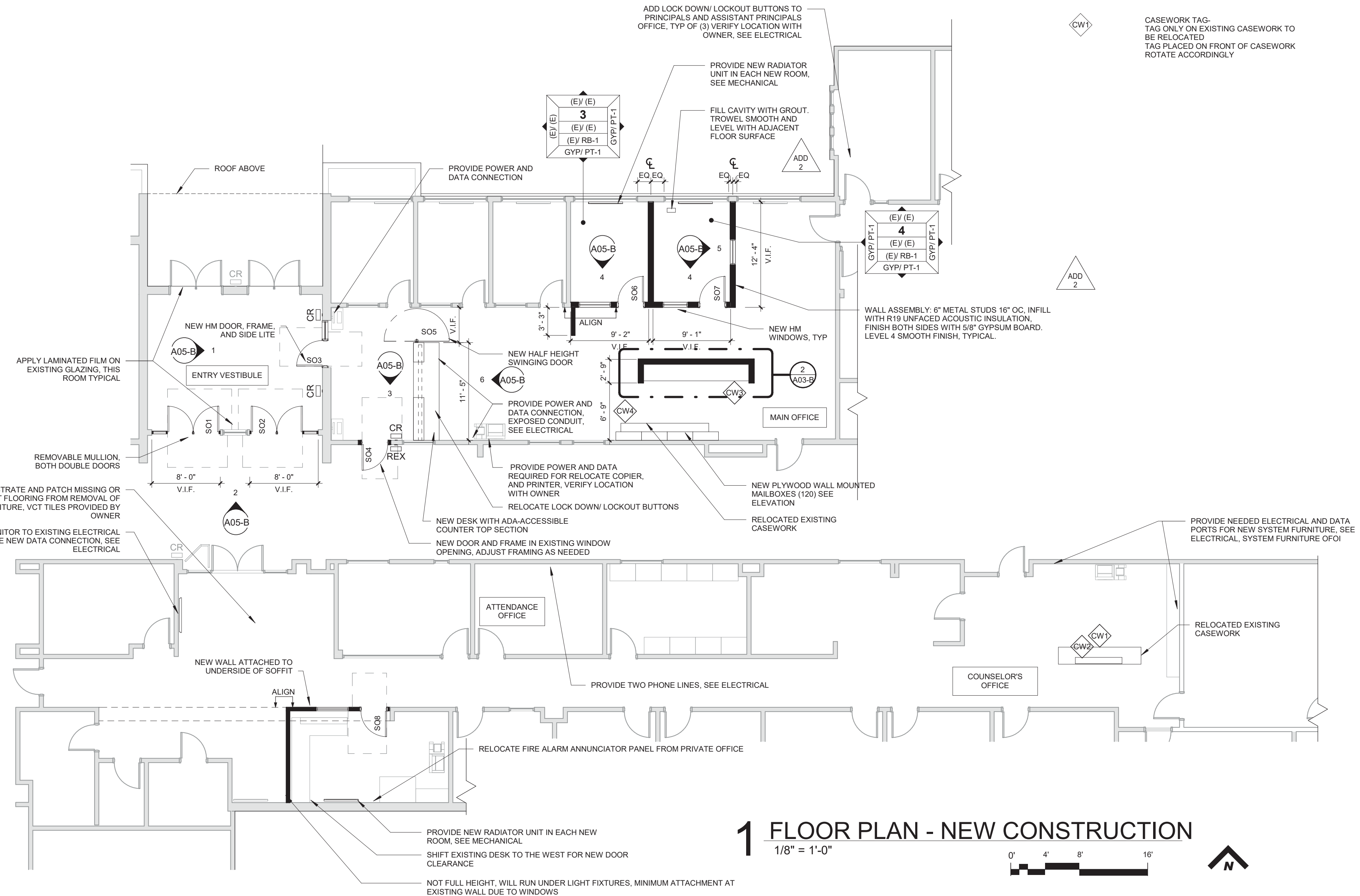
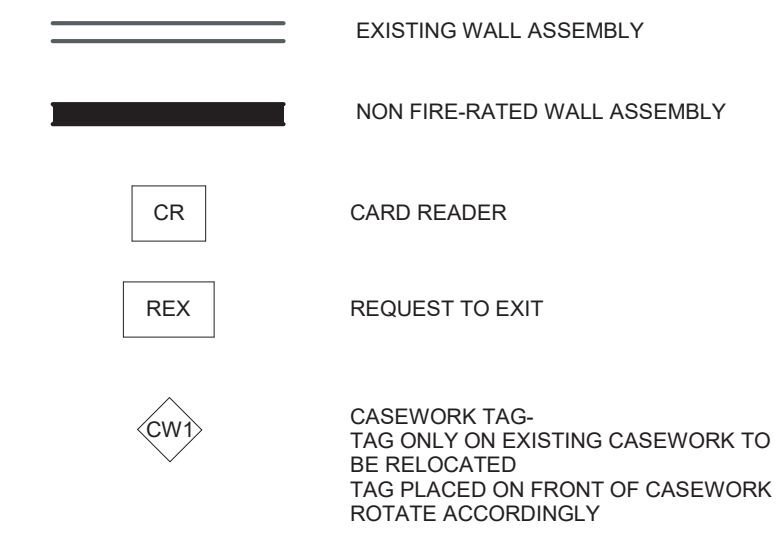
DOOR PANEL TYPES

DOOR SCHEDULE - SO								
MARK	WIDTH	HEIGHT	DOOR PANEL		DOOR FRAME		HARDWARE GROUP	COMMENTS
			TYPE	MATERIAL	MATERIAL	FINISH		
SO1	6' - 0"	6' - 10"	D	ALUM	ALUM		01	
SO2	6' - 0"	6' - 10"	D	ALUM	ALUM		05	CONTROL ACCESS - SEE HARDWARE SPECIFICATION
SO3	3' - 0"	7' - 0"	B	HM	HM	PAINT	03	CONTROL ACCESS - CARD READER, REMOTE LOCK/ UNLOCK
SO4	3' - 0"	7' - 0"	B	HM	HM		04	CONTROL ACCESS - SEE HARDWARE SPECIFICATION
SO5	3' - 10"	3' - 6"	-	ALUM	ALUM		01	PER MANUFACTURER HALF HEIGHT ALUMINUM TRAFFIC DOOR - VERIFY OPENING IN FIELD
SO6	3' - 0"	7' - 0"	A	WOOD	HM	PAINT	02	OFFICE LOCKSET
SO7	3' - 0"	7' - 0"	A	WOOD	HM	PAINT	02	OFFICE LOCKSET
SO8	3' - 0"	7' - 0"	A	WOOD	HM	PAINT	02	OFFICE LOCKSET

GENERAL NOTES - FLOOR PLANS

- A. DIMENSIONS SHOWN ARE TO THE FACE OF STUD, CONCRETE OR MASONRY UNLESS OTHERWISE NOTED. CONTACT THE ARCHITECT FOR ANY ADDITIONAL DIMENSIONS REQUIRED TO LAY OUT THE WORK.
- B. MASONRY DIMENSIONS ARE THE ACTUAL MASONRY UNIT SIZES UNLESS OTHERWISE NOTED.
- C. REPAIR PATCHED SURFACES THAT ARE DAMAGED, LIFTED, DISCOLORED, OR SHOWING OTHER IMPERFECTIONS DUE TO PATCHING WORK. IF DEFECTS ARE DUE TO CONDITION OF SUBSTRATE, REPAIR SUBSTRATE PRIOR TO REPAIRING FINISH.
- D. WHERE (E) FLOOR IS TO REMAIN, PROTECT FROM DAMAGE. PATCH AND REPAIR ANY HOLES IN CONCRETE SLAB CAUSED BY DEMOLITION OF EXISTING WALLS, (I.E. WALL ANCHORS).
- E. PATCH AND REPAIR ANY WALL AND CEILING LOCATIONS WHERE EXISTING ELECTRICAL AND VOICE/DATA OUTLET, JUNCTION BOXES, AND SIMILAR WALL MOUNTED ITEMS ARE REMOVED OR ABANDONED WITHIN THE WORK AREA.
- F. PATCH AND REPAIR WALL AND CEILING SURFACES WHERE MODULAR SYSTEMS FURNITURE WAS REMOVED BY SEPARATE CONTRACTOR.
- G. PATCH AND REPAIR ANY WALL LOCATIONS WHERE EXISTING WALL COVERING HAS BEEN REMOVED WITHIN THE WORK AREA.
- H. PATCH AND REPAIR ANY WALL LOCATIONS WHERE EXISTING WALL BASE HAS BEEN REMOVED WITHIN THE WORK AREA.
- I. PATCH AND REPAIR ANY WALL LOCATIONS WHERE EXISTING EQUIPMENT, ACCESSORIES, HARDWARE OR OTHER SURFACE MOUNTED ELEMENTS HAVE BEEN REMOVED WITHIN THE WORK AREA.
- J. VERIFY LOCATION OF PROX-CARD READERS, AUTOMATIC DOOR OPENERS AND WIRELESS ACTUATORS WITH ARCHITECT DURING ROUGH-IN PHASE OF THE WORK.
- K. COORDINATE WITH OWNER FOR ANY CEILING/FLOORING DISRUPTION REGARDING ACM

WALL FILL PATTERNS:



2 WING WALL

1/4" = 1'-0"

1 FLOOR PLAN - NEW CONSTRUCTION

1/8" = 1'-0"



CONSTRUCTION DRAWING SET  
 4J SECURITY IMPROVEMENTS  
 PROJECT #: 2207  
 EUGENE SCHOOL DISTRICT 4J

SHEET TITLE:  
 SOUTH - FLOOR PLANS

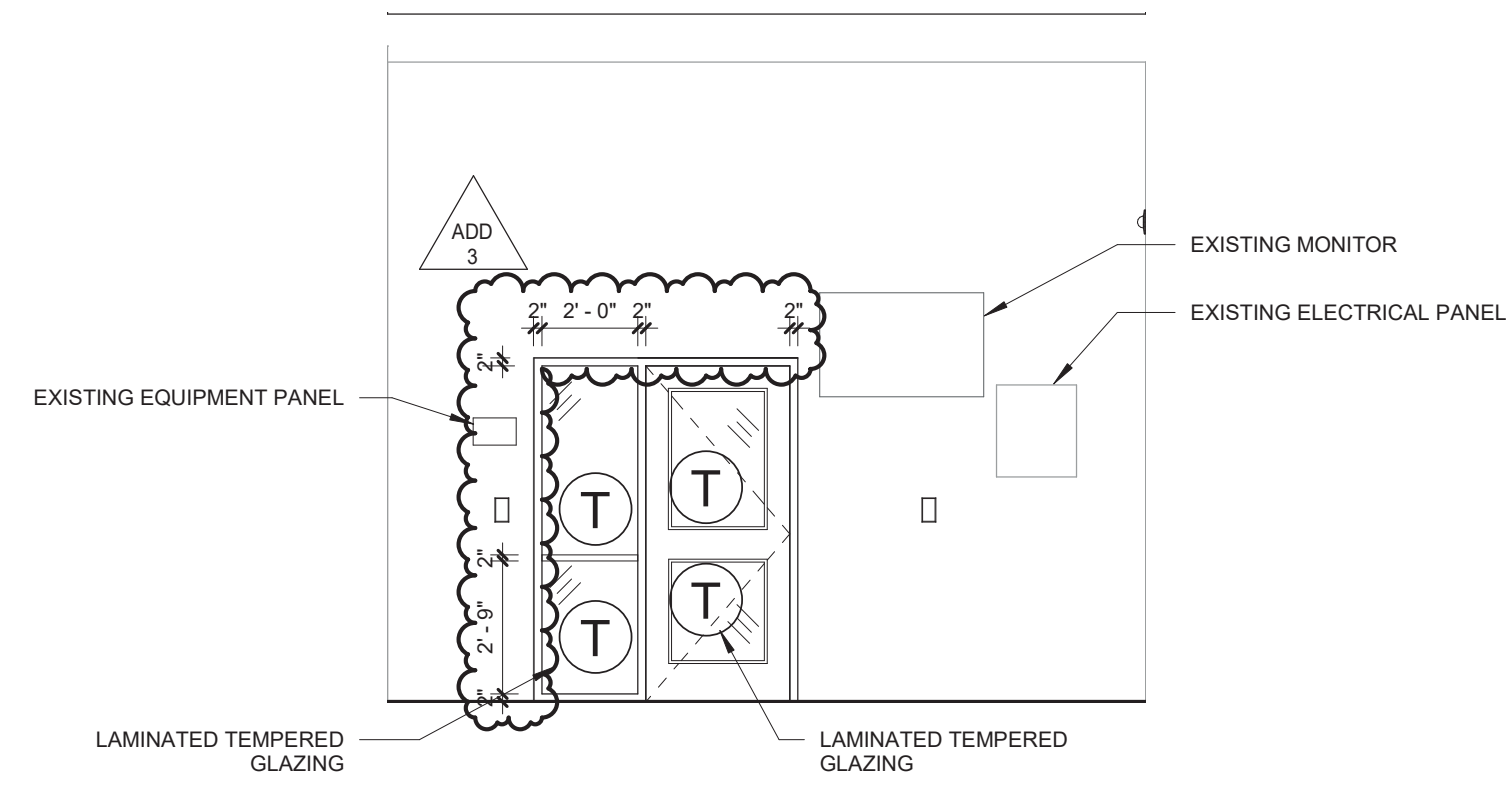
REVISIONS:

#	DESCRP.	DATE
1	ADD 2	04/04/23
2	ADD 3	04/07/23

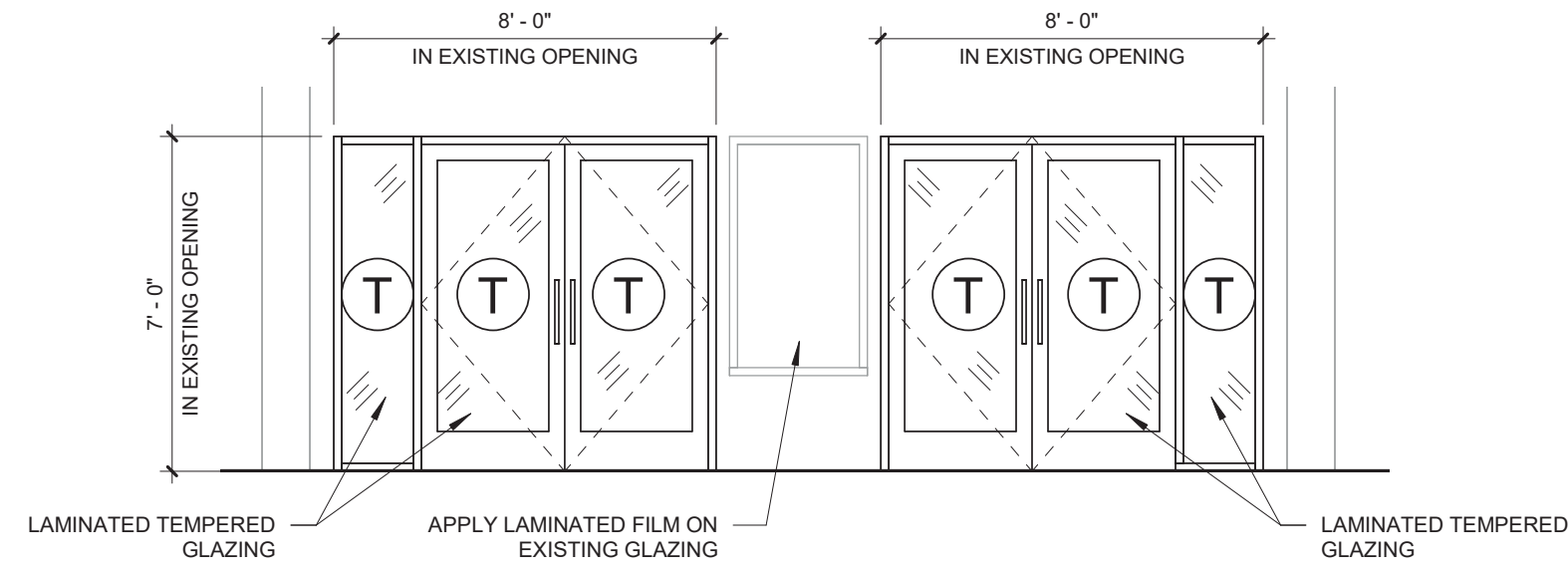
ISSUE DATE: 03.15.23

A03-B

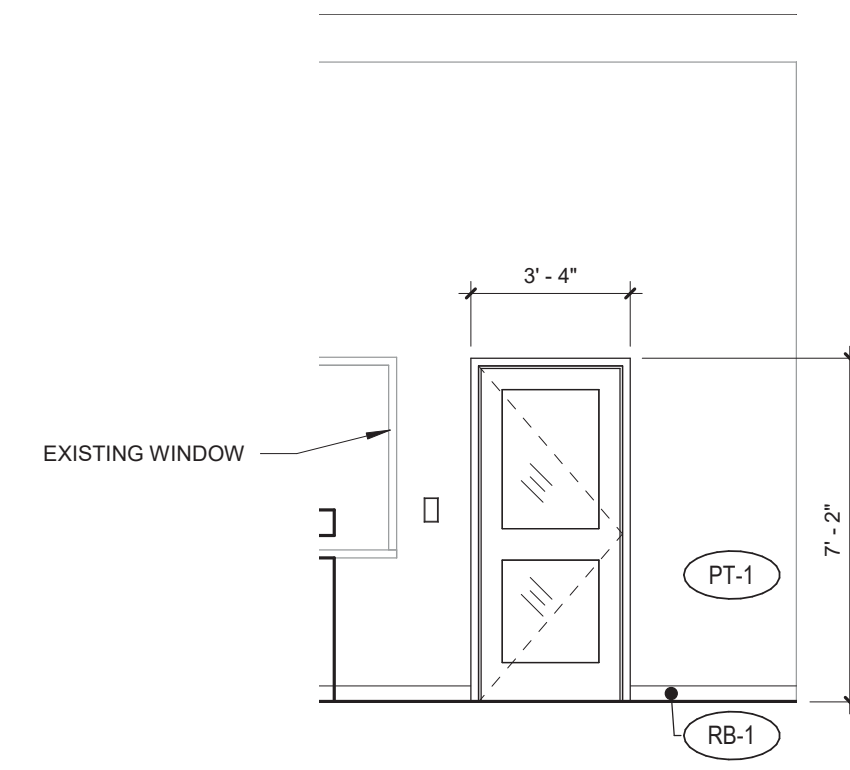




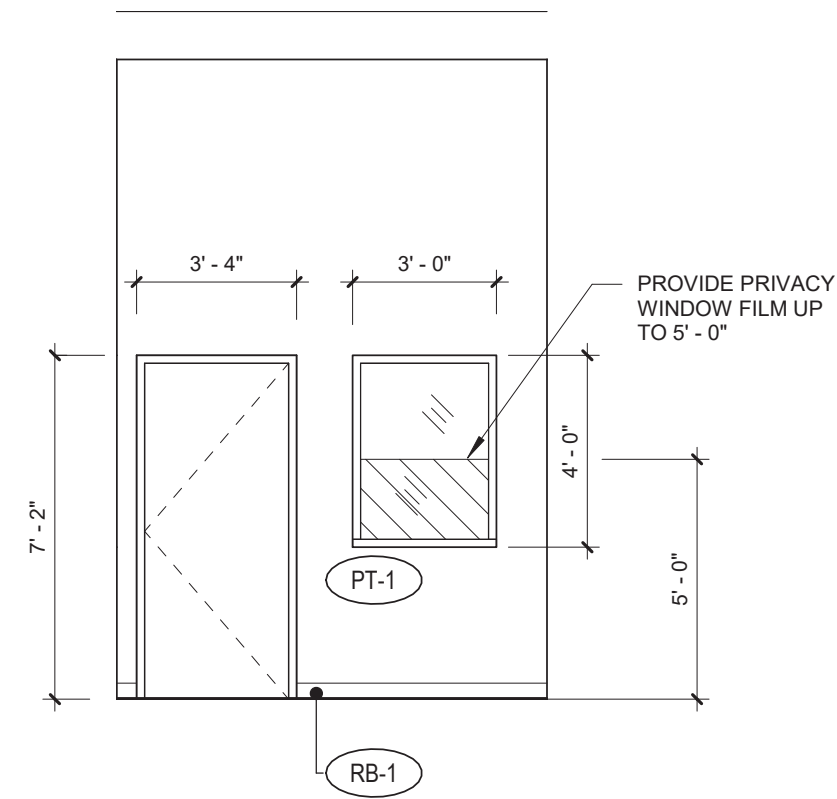
**1** HS - SOUTH - VESTIBULE - E  
1/4" = 1'-0"



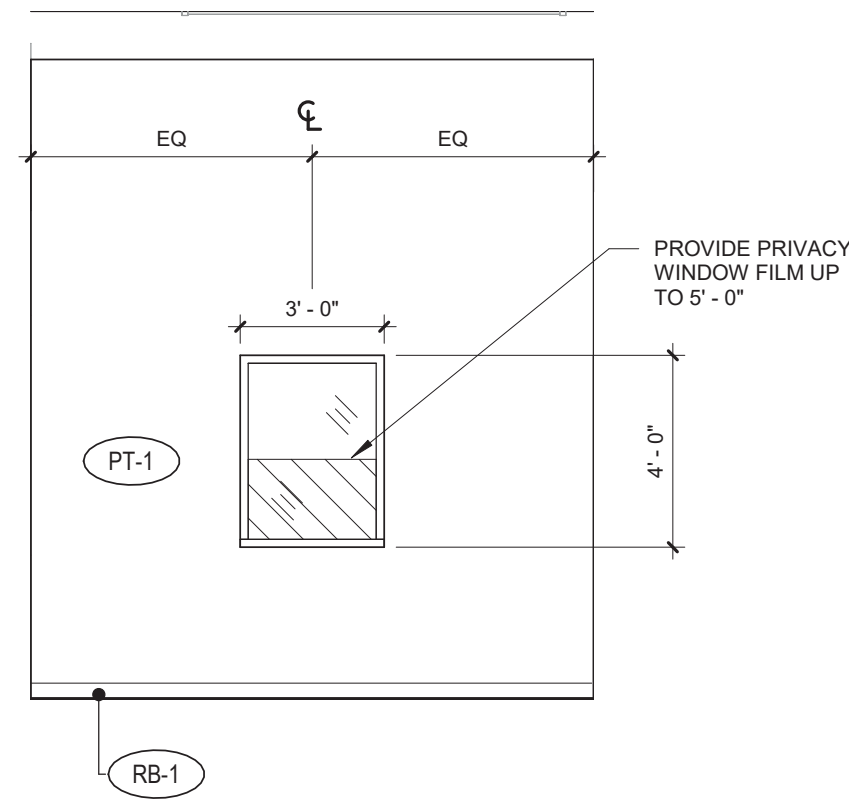
**2** HS - SOUTH - VESTIBULE - S  
1/4" = 1'-0"



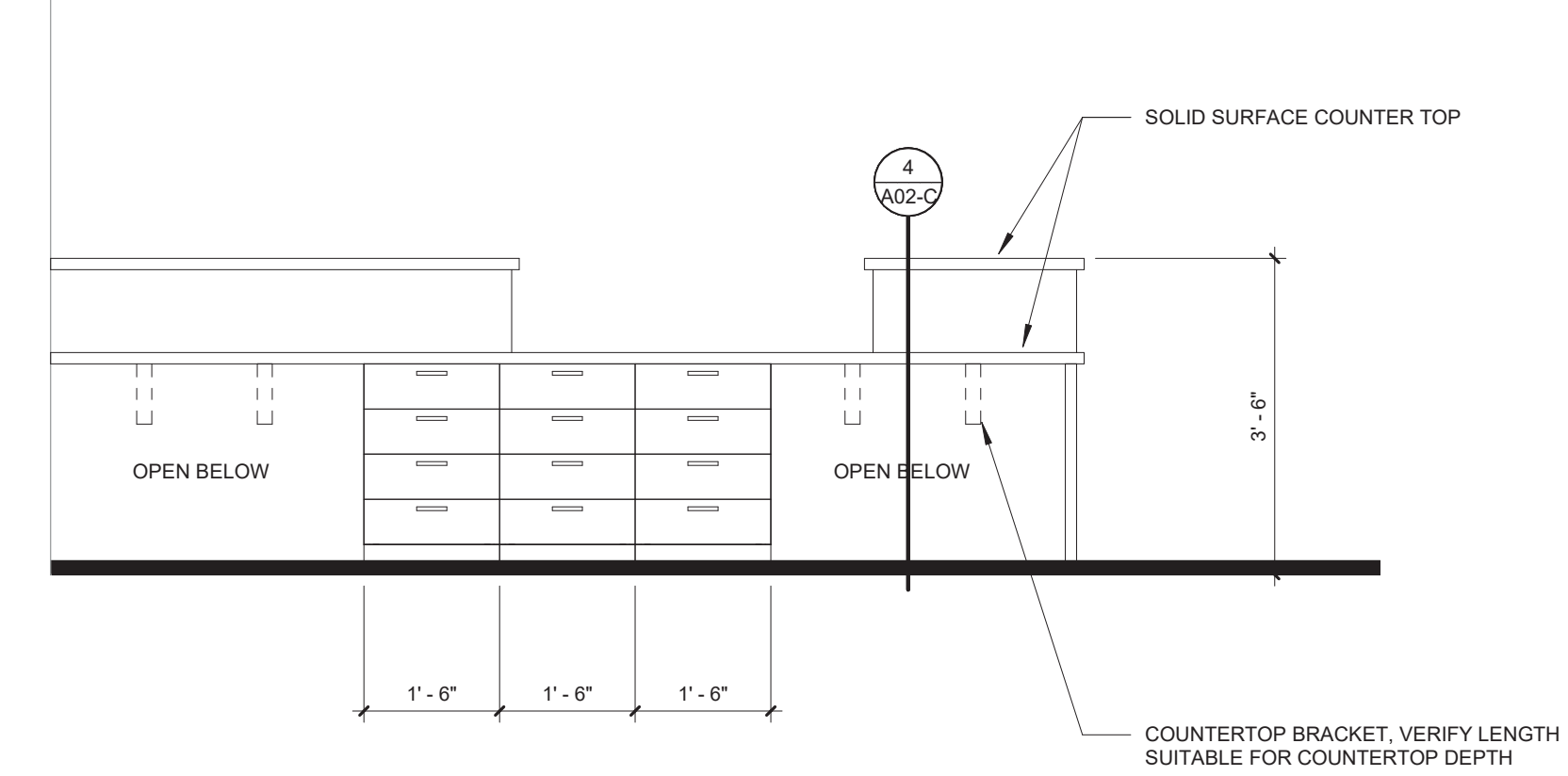
**3** HS - SOUTH - MAIN OFFICE - S  
1/4" = 1'-0"



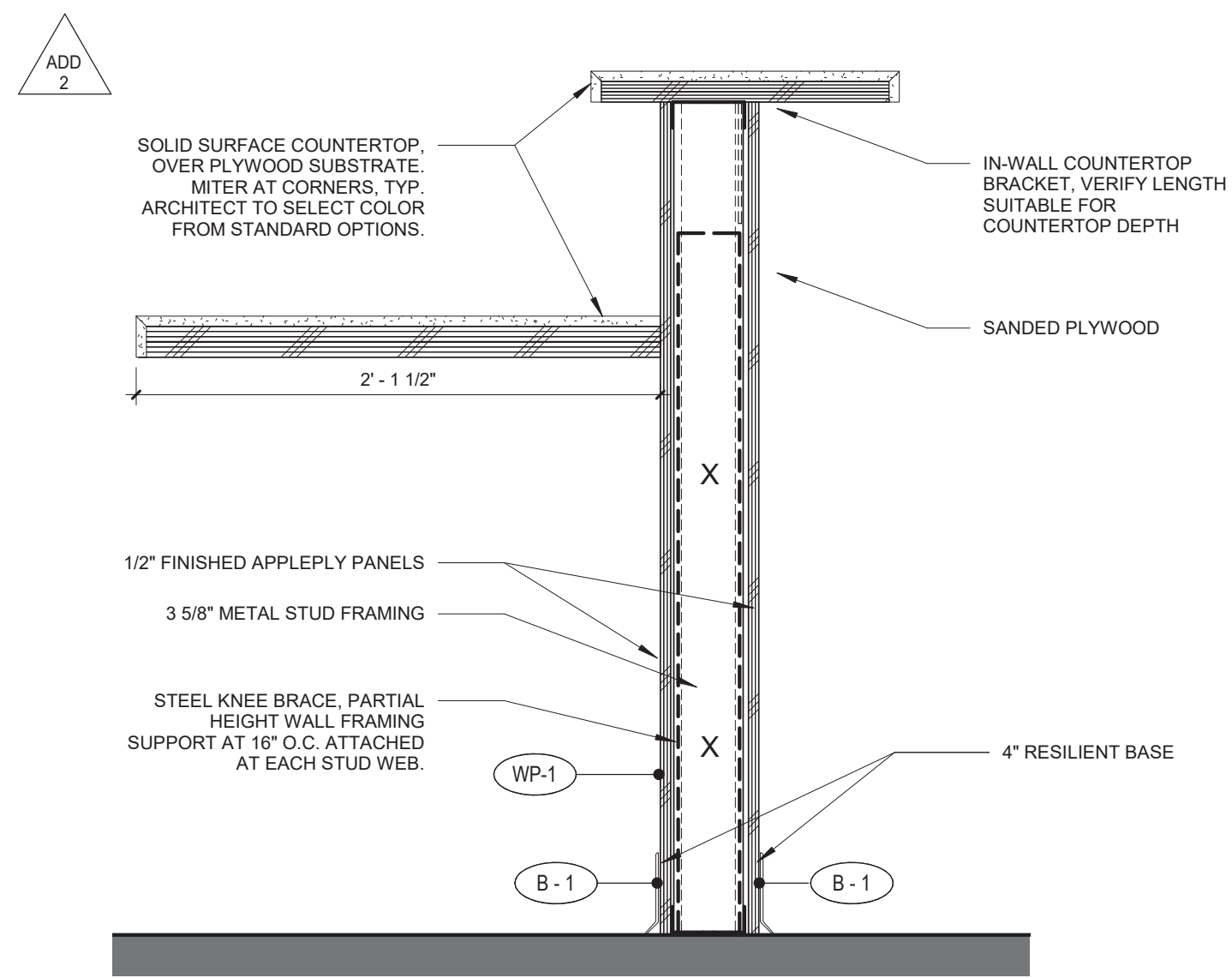
**4** HS - SOUTH - OFFICE - S  
1/4" = 1'-0"



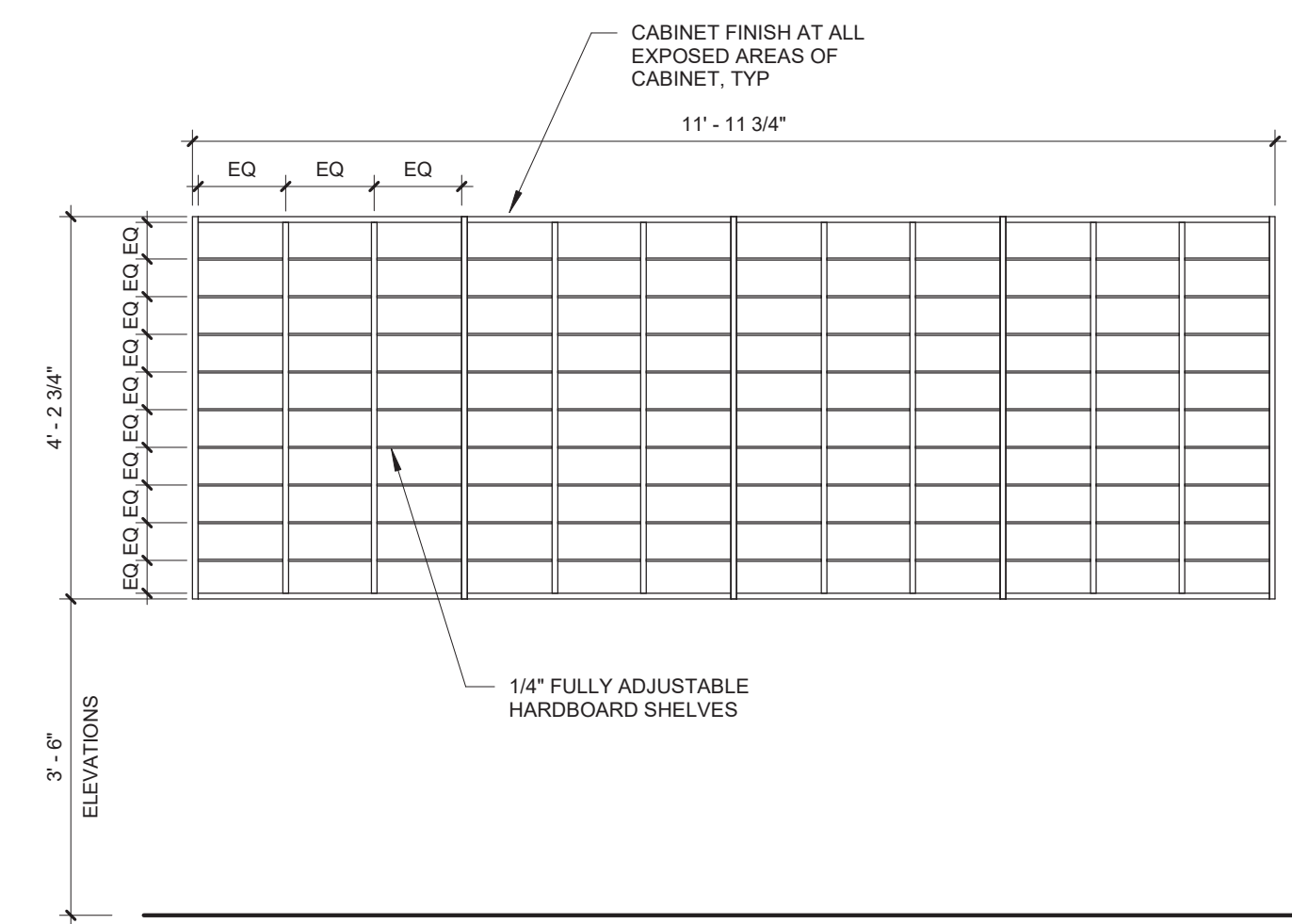
**5** HS - SOUTH - OFFICE - W  
1/4" = 1'-0"



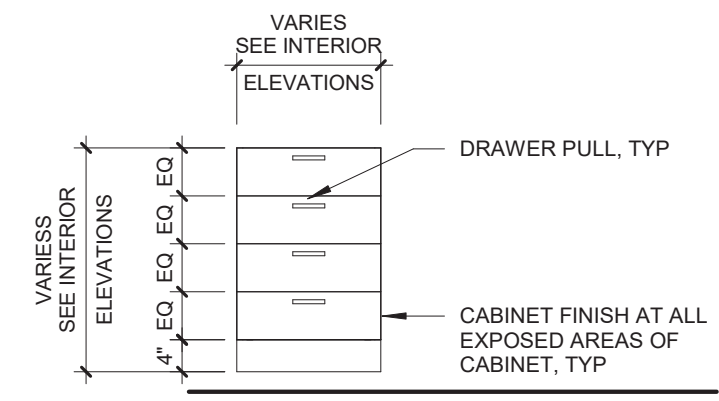
**6** CASEWORK  
1/2" = 1'-0"



**7** CASEWORK  
1 1/2" = 1'-0"



**UPPER CABINET**  
UPPER CABINET WITH MAILBOX SLOTS



**BASE CABINET**  
BASE CABINET WITH 4 EQUAL SIZED DRAWERS

DOOR SCHEDULE - CH								
MARK	WIDTH	HEIGHT	DOOR PANEL		DOOR FRAME		HARDWARE GROUP	COMMENTS
			TYPE	FINISH	TYPE	FINISH		
CH1	3'-10"	3'-6"	ALUM	PER MANUFACTURER	ALUM	PER MANUFACTURER	PER MANUFACTURER	HALF HEIGHT ALUMINUM TRAFFIC DOOR - VERIFY OPENING IN FIELD
CH2	3'-6"	3'-6"	ALUM	PER MANUFACTURER	ALUM	PER MANUFACTURER	PER MANUFACTURER	HALF HEIGHT DOUBLE SWINGING DOOR

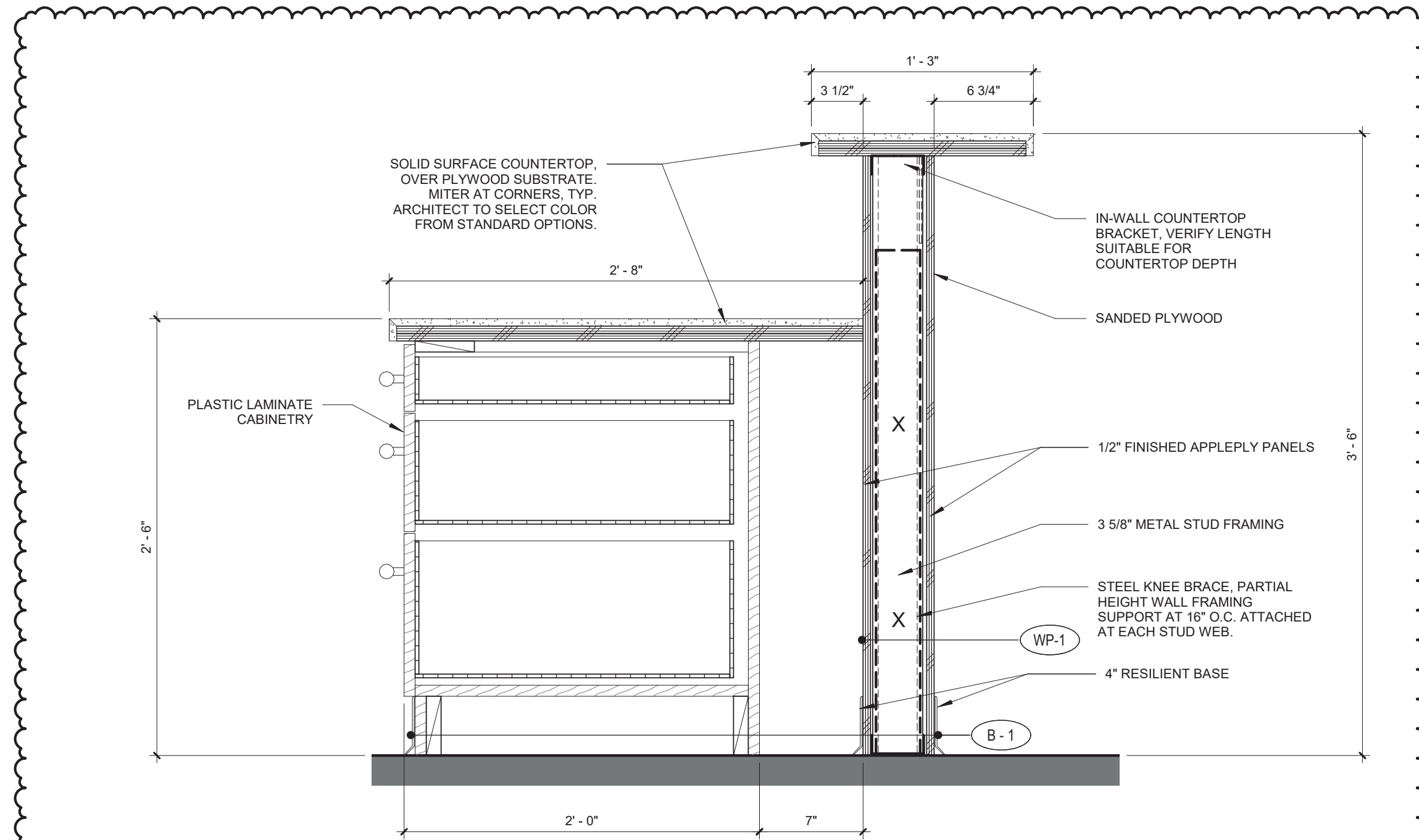
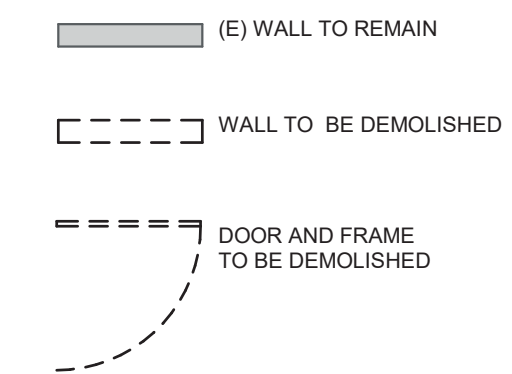
**GENERAL NOTES - DEMOLITION**

- A. PROTECT ALL EXISTING CONSTRUCTION TO REMAIN.
- B. COORDINATE WITH OWNER FOR REMOVAL AND STORAGE OF (E) EQUIPMENT AND CASEWORK TO BE SALVAGED.
- C. REMOVE EXISTING DOOR WALL STOPS WHERE DOORS NO LONGER EXIST.
- D. PROTECT (E) FLOORS, WALLS, CEILING & FINISHES TO REMAIN.
- E. REMOVE AND STORE MATERIAL AND EQUIPMENT WHERE INDICATED TO BE SALVAGED OR RELOCATED.
- F. WHEN REMOVING FLOOR FINISHES REMOVE ALL ADHESIVE, GROUT, RESIDUE AND DEBRIS.
- G. COORDINATE WITH ELECTRICAL FOR ITEMS TO BE DEMOLISHED, REMOVED, AND/OR SALVAGED.
- H. COORDINATE WITH MECHANICAL/PLUMBING FOR ITEMS TO BE DEMOLISHED, AND/OR SALVAGED.
- I. COORDINATE WITH OWNERS MODULAR SYSTEMS FURNITURE CONTRACTOR FOR CHANGES TO FURNITURE AND SYSTEM CASEWORK.
- J. COORDINATE WITH OWNER FOR ANY CEILING/FLOORING DISRUPTION REGARDING ACM.

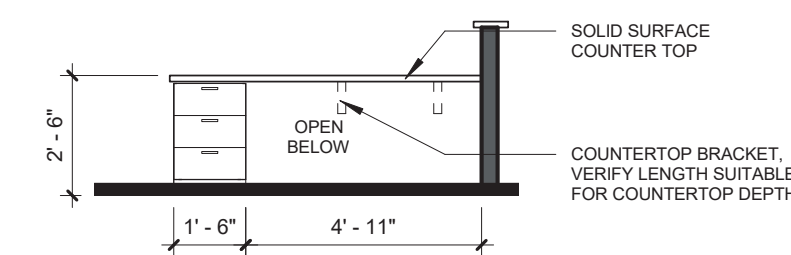
**GENERAL NOTES - FLOOR PLANS**

- A. DIMENSIONS SHOWN ARE TO THE FACE OF STUD, CONCRETE OR MASONRY UNLESS OTHERWISE NOTED. CONTACT THE ARCHITECT FOR ANY ADDITIONAL DIMENSIONS REQUIRED TO LAY OUT THE WORK.
- B. MASONRY DIMENSIONS ARE THE ACTUAL MASONRY UNIT SIZES UNLESS OTHERWISE NOTED.
- C. REPAIR PATCHED SURFACES THAT ARE DAMAGED, LIFTED, DISCOLORED, OR SHOWING OTHER IMPERFECTIONS DUE TO PATCHING WORK. IF DEFECTS ARE DUE TO CONDITION OF SUBSTRATE, REPAIR SUBSTRATE PRIOR TO REPAIRING FINISH.
- D. WHERE (E) FLOOR IS TO REMAIN, PROTECT FROM DAMAGE. PATCH AND REPAIR ANY HOLES IN CONCRETE SLAB CAUSED BY DEMOLITION OF EXISTING WALLS, (I.E. WALL ANCHORS).
- E. PATCH AND REPAIR ANY WALL AND CEILING LOCATIONS WHERE EXISTING ELECTRICAL AND VOICEDATA OUTLET, JUNCTION BOXES, AND SIMILAR WALL MOUNTED ITEMS ARE REMOVED OR ABANDONED WITHIN THE WORK AREA.
- F. PATCH AND REPAIR WALL AND CEILING SURFACES WHERE MODULAR SYSTEMS FURNITURE WAS REMOVED BY SEPARATE CONTRACTOR.
- G. PATCH AND REPAIR ANY WALL LOCATIONS WHERE EXISTING WALL COVERING HAS BEEN REMOVED WITHIN THE WORK AREA.
- H. PATCH AND REPAIR ANY WALL LOCATIONS WHERE EXISTING WALL BASE HAS BEEN REMOVED WITHIN THE WORK AREA.
- I. PATCH AND REPAIR ANY WALL LOCATIONS WHERE EXISTING EQUIPMENT, ACCESSORIES, HARDWARE OR OTHER SURFACE MOUNTED ELEMENTS HAVE BEEN REMOVED WITHIN THE WORK AREA.
- J. VERIFY LOCATION OF PROX-CARD READERS, AUTOMATIC DOOR OPENERS AND WIRELESS ACTUATORS WITH ARCHITECT DURING ROUGH-IN PHASE OF THE WORK.
- K. COORDINATE WITH OWNER FOR ANY CEILING/FLOORING DISRUPTION REGARDING ACM.

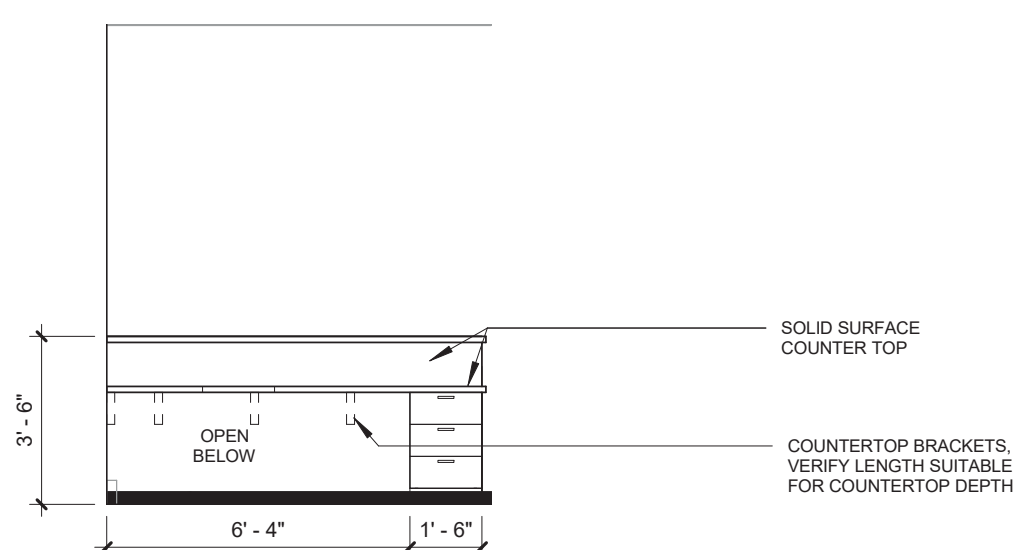
**DEMOLITION LEGEND**



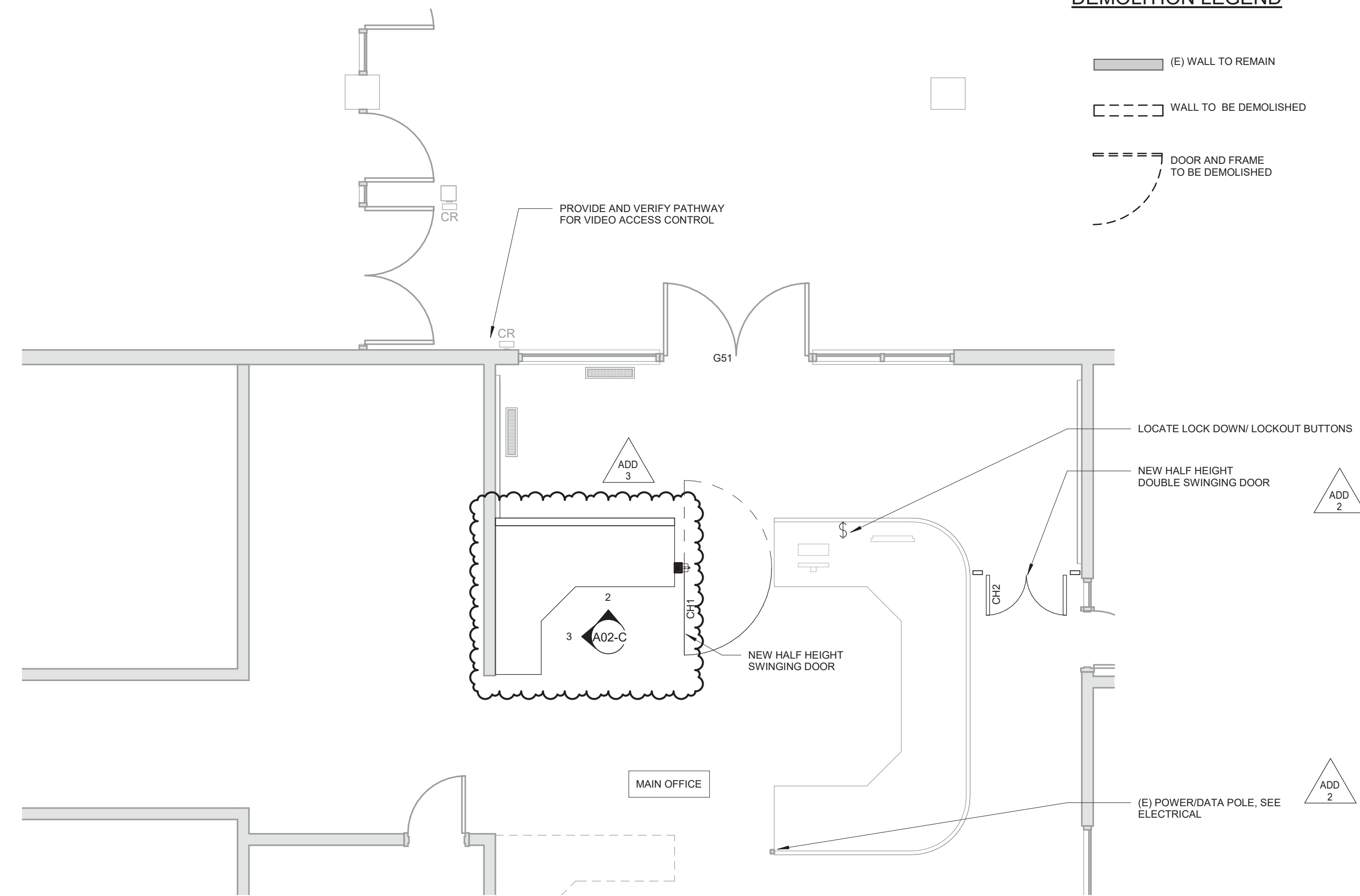
**4 CASEWORK DETAIL**  
1 1/2" = 1'-0"



**3 RECEPTION DESK INTERIOR 2**  
1/4" = 1'-0"



**2 RECEPTION DESK INTERIOR 1**  
1/4" = 1'-0"

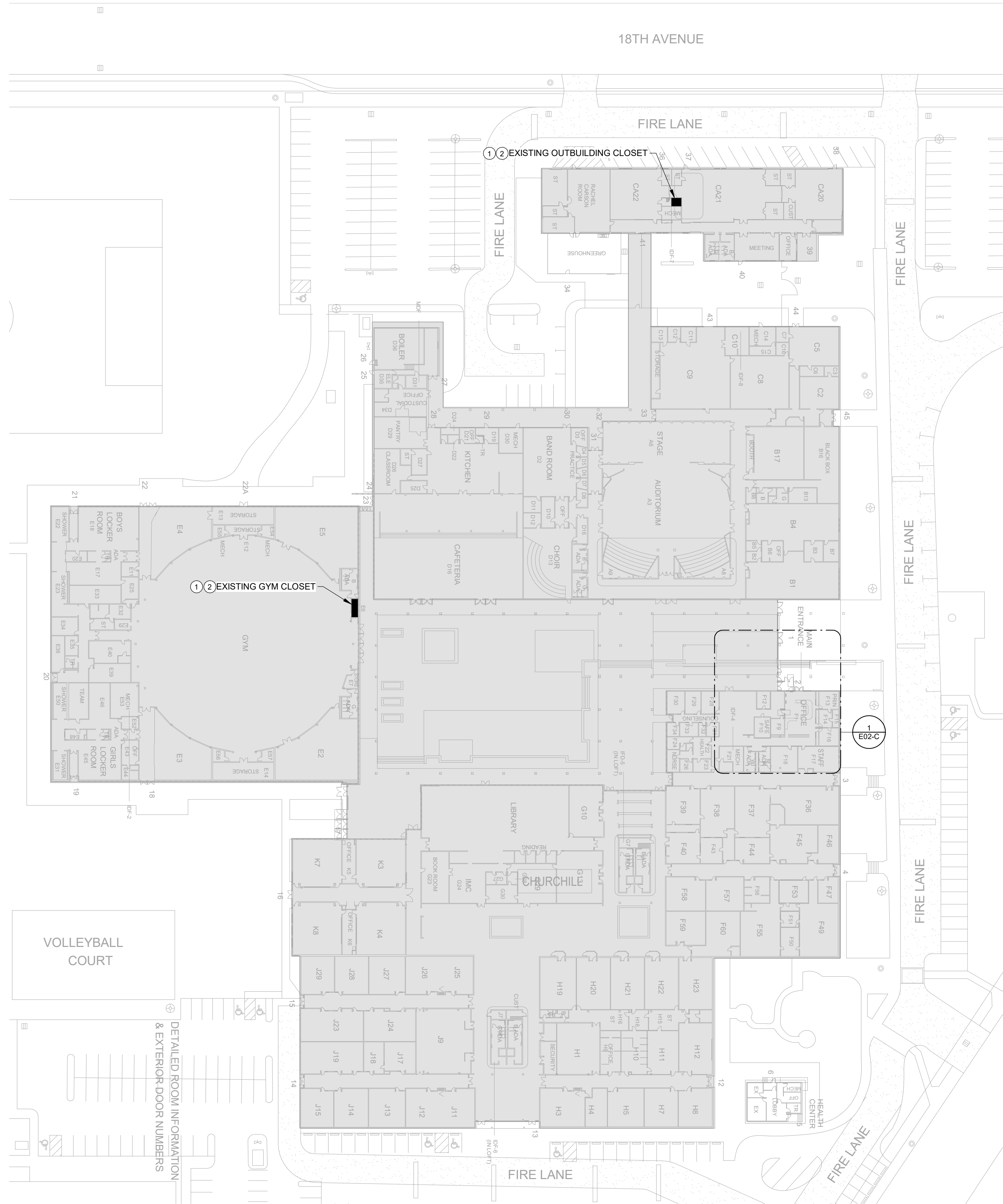


**1 FLOOR PLAN - NEW CONSTRUCTION**  
1/4" = 1'-0"



REVISIONS:	#	DESCRP.	DATE
	1	ADD 2	04/04/23
	2	ADD 3	04/07/23





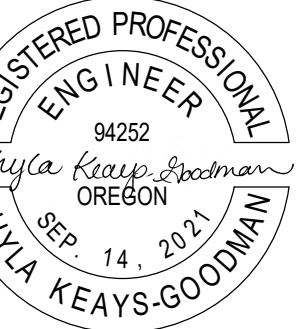
**1 CHURCHILL SITE PLAN - ELECTRICAL**  
 1" = 50'-0"

**SITE GENERAL NOTES**

- A. REFER TO SHEET E00 AND E01 FOR PROJECT GENERAL NOTES.
- B. CONDUIT ROUTING AND LOCATIONS SHOWN ARE SCHEMATIC. COORDINATE THE FINAL PROPOSED ROUTING WITH GENERAL CONTRACTOR AND OWNER'S REPRESENTATIVE.
- C. PROVIDE SAWCUTTING AND PATCHING OF EXISTING PAVEMENT WHERE REQUIRED TO ACCOMMODATE NEW UNDERGROUND WORK.
- D. ABBREVIATIONS:  
 (E) - EXISTING ITEM TO REMAIN  
 (ER) - NEW LOCATION OF EXISTING ITEM  
 (N) - NEW ITEM IN EXISTING LOCATION  
 (D) - DEMOLISHED ITEM, PATCH AND/OR COVER  
 (RN) - REPLACE EXISTING WITH NEW  
 (RR) - EXISTING ITEM TO BE REMOVED AND RELOCATED

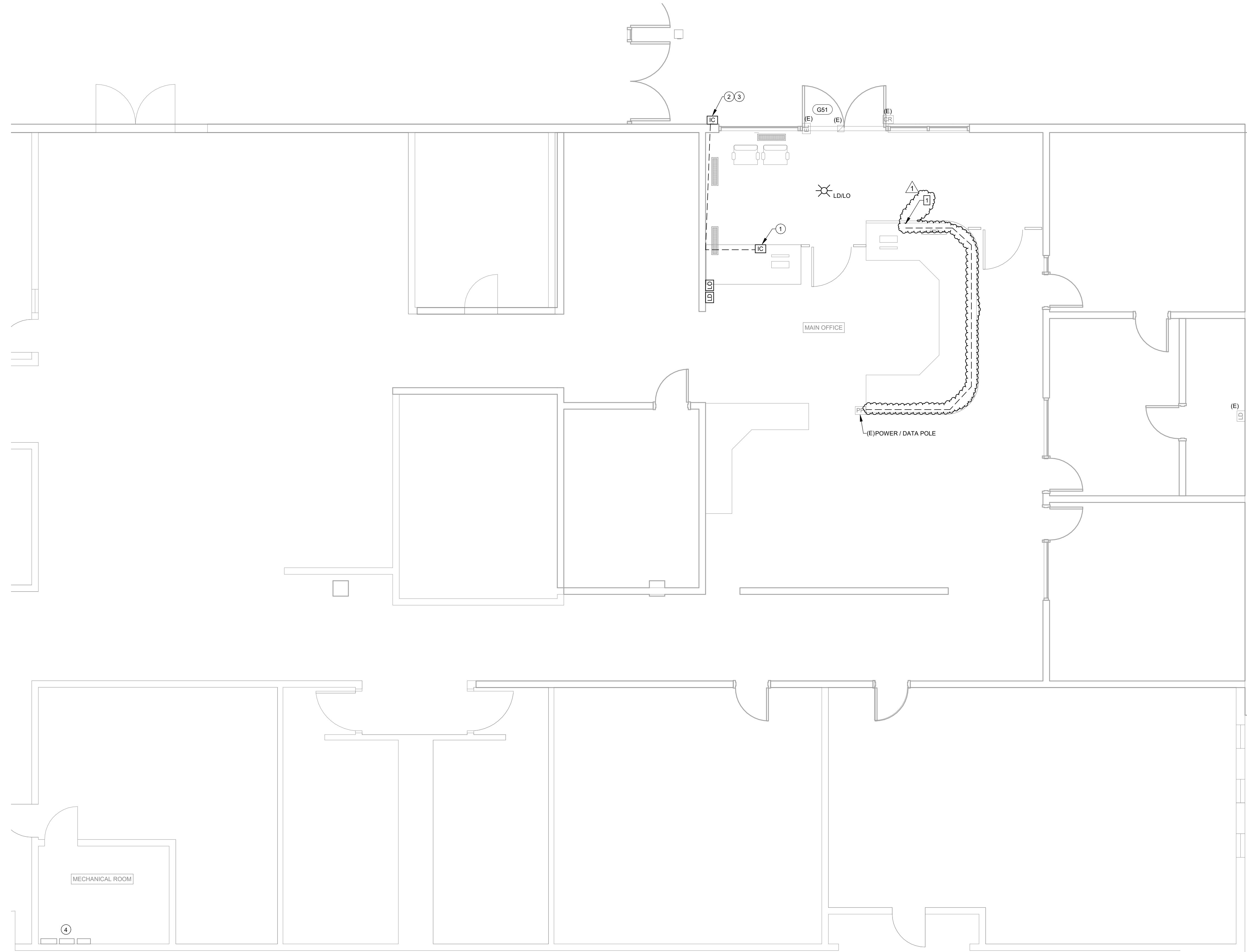
**KEYNOTES**

- 1 LOCATION OF EXISTING LEVEL ACCESS CONTROL LNL2000 INTELLIGENT SYSTEM CONTROLLER, 1320 READER CARDS AND POWER SUPPLIES
- 2 REFER TO RISER DIAGRAM DETAILS ON E12-C FOR NEW ACCESS CONTROL SYSTEM EQUIPMENT AND REQUIREMENTS.



REVISIONS:

#	DESCRP.	DATE
1	ADD 3	04/07/23



**GENERAL NOTES**

- A. REFER TO SHEET E00 AND E01 FOR PROJECT GENERAL NOTES.
- B. ABBREVIATIONS:  
 (E) EXISTING ITEM TO REMAIN  
 (ER) NEW LOCATION OF EXISTING ITEM  
 (N) NEW ITEM IN EXISTING LOCATION  
 (D) DEMOLISHED EXISTING ITEM, PATCH AND/OR COVER  
 (RN) REPLACE EXISTING WITH NEW  
 (RR) EXISTING ITEM TO BE REMOVED AND RELOCATED

**KEYNOTES**

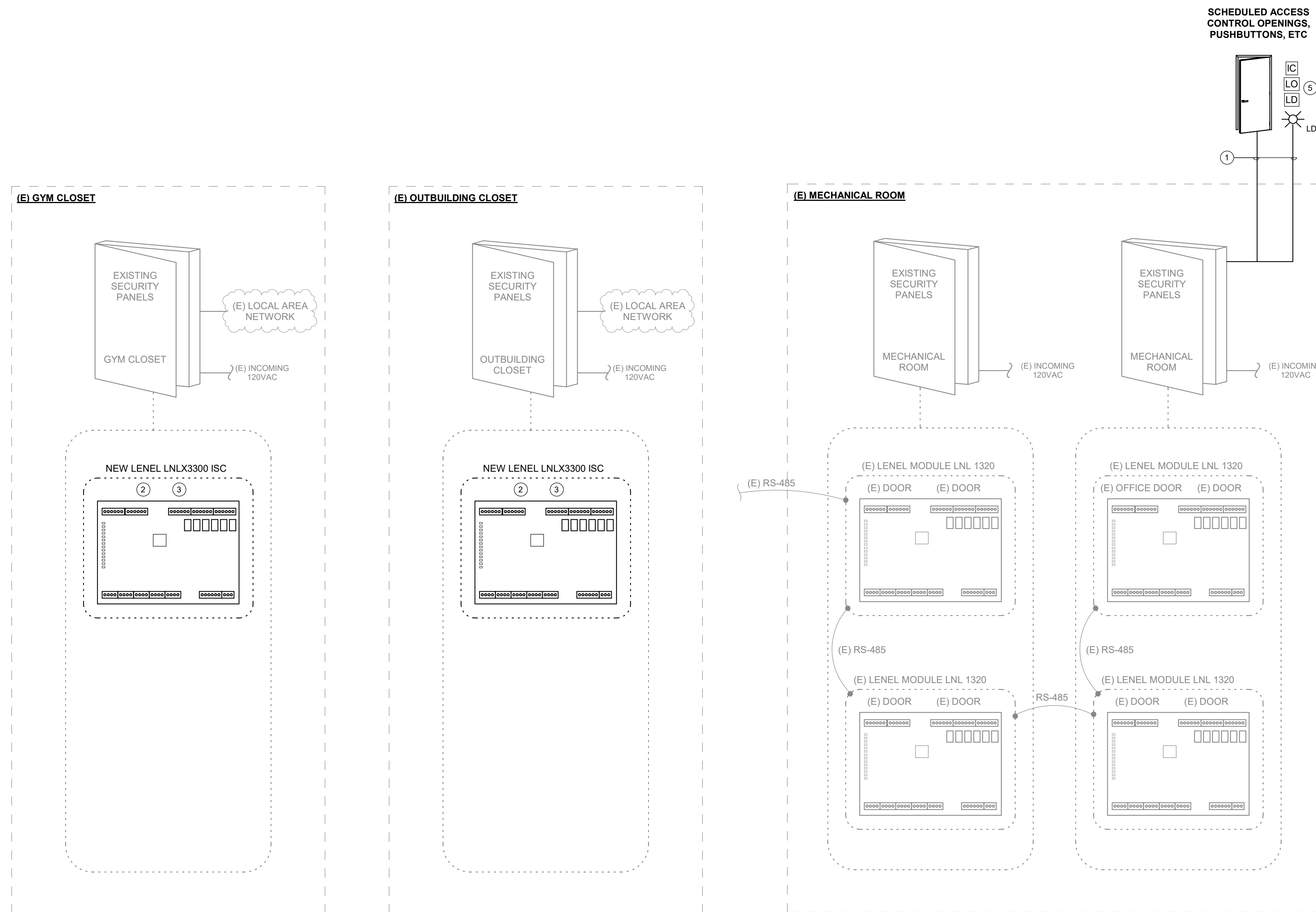
- 1 AIPHONE DESKTOP MASTER CONTROL STATION. VERIFY FINAL LOCATION WITH OWNER PRIOR TO INSTALLATION. PROVIDE SYSTEM PATHWAYS AND CABLING FROM EXTERIOR DEVICE. WHERE PATHWAYS ARE EXPOSED, PROVIDE DECORATIVE SURFACE MOUNT RACEWAY PER SPECIFICATIONS AND PAINT AS DIRECTED BY THE ARCHITECT. PROVIDE CABLING INTERCONNECTED WITH THE EXISTING LEVEL ACCESS CONTROL SYSTEM TO ALLOW MOMENTARY DOOR OVERRIDE FUNCTIONALITY FROM THE MASTER CONTROL UNIT TO DOOR G51. PROVIDE RELAYS, WIRING AND PROGRAMMING AS REQUIRED FOR A FULLY FUNCTIONAL SYSTEM.
- 2 AIPHONE VIDEO INTERCOM. INSTALL PER SPECIFICATIONS AND MANUFACTURER'S RECOMMENDATIONS.
- 3 DISCONNECT AND REMOVE EXISTING AIPHONE EQUIPMENT AND PREPARE SURFACE FOR NEW DEVICE. REMOVE ANY ASSOCIATED INTERIOR DEVICES AND CABLING.
- 4 EXISTING LEVEL ACCESS CONTROL SYSTEM CABINETS, POWER SUPPLIES AND DMP INTRUSION SYSTEM CABINETS.



EXPIRES: 6/30/2023

#	DESCRP.	DATE
1	ADD 3	04/07/23





**GENERAL NOTES:**

- A. LEVEL ON GUARD ACCESS CONTROL SYSTEM IS EXISTING. PROVIDE THE MAJOR SYSTEM COMPONENTS ILLUSTRATED ACCOMMODATE NEWLY SCHEDULED EQUIPMENT.
- B. THE INTENT OF THE RISER DIAGRAMS ARE TO IDENTIFY MAJOR SYSTEM COMPONENTS. CONSULT MANUFACTURER RECOMMENDATIONS AND PROVIDE WIRING, COMPONENTS, ETC AS REQUIRED TO DELIVER A FULLY FUNCTIONAL SYSTEM.
- C. REFER TO FLOOR PLANS FOR EQUIPMENT LOCATIONS.
- D. PROGRAMMING IS BY THE BIDDING CONTRACTOR AT THE DIRECTION OF 4J SCHOOL DISTRICT.
- E. COORDINATE AC POWER REQUIREMENTS WITH DIVISION 26 CONTRACTOR.
- F. ABBREVIATIONS:  
 (E) - EXISTING ITEM TO REMAIN  
 (ER) - NEW LOCATION OF EXISTING ITEM  
 (N) - NEW ITEM IN EXISTING LOCATION  
 (D) - DEMOLISHED ITEM, PATCH AND/OR COVER  
 (RN) - REPLACE EXISTING WITH NEW  
 (RR) - EXISTING ITEM TO BE REMOVED AND RELOCATED

**KEYNOTES:**

- 1. MULTI-CABLE, MULTI-CONDUCTOR COMPOSITE CABLE (TYP. FOR EACH CONTROLLER), REFER TO ACCESS CONTROL DETAILS AND SPECIFICATIONS FOR WIRING REQUIREMENTS.
- 2. DISCONNECT AND REMOVE EXISTING LNL2000 ISC AND RECONNECT WITH NEW LNLX3300 ISC. RECONNECT EXISTING CABLING AND CONNECTIONS TO MATCH EXISTING CONDITIONS. PROVIDE PROGRAMMING, ADDRESSING AND RECONFIGURATION AS REQUIRED TO MATCH EXISTING CONDITIONS IN COORDINATION WITH 4J SCHOOL DISTRICT.
- 3. FIELD MODIFY EXISTING INCOMING RS-485 SERIAL COMMUNICATION WIRING TO ACCOMMODATE THE REDUCTION IN AVAILABLE PORTS ON THE LNLX3300 ISC.

4. REFER TO SPECIFICATIONS FOR DEVICE REQUIREMENTS.

**1 LEVEL ACCESS CONTROL RISER - CHURCHILL**

REVISIONS:

#	DESCRP.	DATE
1	ADD 3	04/07/23