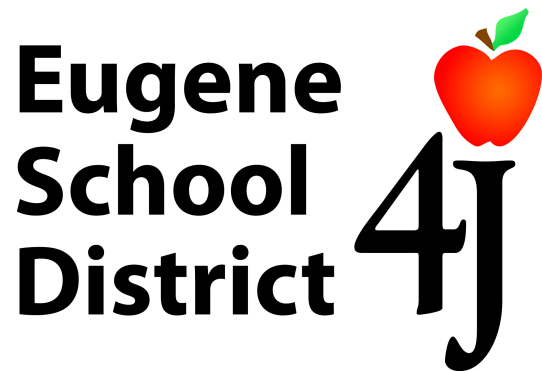


# COVID-19 Communicable Disease Management Plan

2022–2023



## Table of Contents

<b>Purpose and Scope</b>	<b>3</b>
<b>Oversight and Compliance</b>	<b>3</b>
Building-Level Oversight	3
District-Level Oversight	3
Compliance and Reporting	4
<b>COVID Prevention and Mitigation Protocols</b>	<b>4</b>
Vaccination	4
Vaccination Required for Employees, Volunteers and Contractors	4
Vaccination Optional for Students	4
Testing	4
Types of COVID-19 Testing	4
District Testing Options	5
Community Testing Options	5
Daily Screening	6
Screening for Symptoms	6
Face Masks	6
Physical Distancing	6
Hand Hygiene and Respiratory Etiquette	6
Ventilation and Airflow	7
Cleaning and Disinfection	8
<b>COVID Case Response Protocols</b>	<b>8</b>
Definitions	8
Exclusion and Isolation Measures	9
Symptom-Based Exclusion Summary Charts	10
Notification to District	11
Temporary Closures or Suspension of Activities	11
<b>Additional Guidance</b>	<b>11</b>
Oregon Department of Education	11
Local, State and Federal Resources	11
4J Policy and Procedures	12

## I. Purpose and Scope

Eugene School District 4J’s COVID-19 Communicable Disease Management Plan prioritizes the continuation of full-time, in-person instruction as required for all Oregon school districts.

This plan supplements the district’s communicable diseases procedures in [JHCC-AR](#) and [GBEB-AR](#) by providing guidance specific to the COVID-19 pandemic and meets the requirements of [ODE’s Communicable Disease Guidance for Schools](#) and OSHA’s [Rule Addressing COVID-19 Workplace Risks \(OAR 437-001-0744\)](#). ODE has provided additional guidance to help you [plan for the 2022-23 School Year](#).

## II. Oversight and Compliance

All employees have a role to play in promoting a healthy and safe working and learning environment. Staff are expected to implement the established health and safety requirements consistently and to support other staff and students in maintaining these precautions as well.

### a. Building-Level Oversight

1. Each site has a COVID coordinator who will serve as the single point person at each school working with the district COVID administrator to establish, implement, support and enforce all COVID health and safety protocols, including face masks and physical distancing requirements. This role should be known to all staff in the building with consistent ways for licensed and classified staff to access and voice concerns or needs.
  - (a) Elementary Schools, Fox Hollow and ECCO — School Principal
  - (b) Middle Schools — Assistant Principal
  - (c) High Schools — Assistant Principal to be appointed by school principal
  - (d) Education Center — Karen Hardin
  - (e) Transportation — Arthur Hart
  - (f) Facilities — Patrick Mucker
  - (g) Athletics — High School Athletic Directors
  - (h) Connections — Site Coordinator for Churchill High School
  - (i) Community Living Programs — Site Coordinator for Sheldon High School
  - (j) Eugene Online Academy, GED and Reconnections — Scott Mayers
  - (k) Bailey Hill — Eric Anderson
  - (l) ECCO Childcare — Scott Mayers, Jill Johnson

### b. District-Level Oversight

<b>District COVID Administrators</b>	<b>COVID/Employees</b>	<b>COVID/Students</b>
Dawn Strong & Heather Stein	Dawn Strong	Joy Maxwell & Heather Stein

### c. Compliance and Reporting

1. Anyone with concerns about compliance with COVID protocols at a particular building should first address their concerns with the building administrator, or, if there is a conflict, then to the district-level COVID administrator, Dawn Strong.

2. Comments and suggestions on this plan may be sent to [healthservices@4j.lane.edu](mailto:healthservices@4j.lane.edu).

### III. COVID Prevention and Mitigation Protocols

Everyone shares in the responsibility to keep our schools and communities safe and healthy. In order to continue full-time, in-person instruction, this responsibility asks each person to both maintain their own health and take actions to protect the health of those with whom they interact.

#### a. Vaccination

1. Getting vaccinated against COVID-19 is the best way to protect individuals and communities, slow the pandemic, and return society to more typical functioning. Safe and effective vaccines against COVID-19 are currently available and recommended for everyone age 6 months and older. Booster shots are currently available and recommended for everyone age 5 and older. To locate a vaccination clinic in your area, please visit this website <https://govstatus.egov.com/find-covid-19-vaccine>.
2. ***Vaccination Required for Employees, Volunteers and Contractors***
  - (a) Consistent with state law ([OAR 333-019-1030](#)), all district employees, and all volunteers and contractors who provide services at a school requiring direct or indirect contact with students, must be fully vaccinated against COVID-19. “Fully vaccinated” means 14 days have passed since an individual received the final dose of a 2-dose COVID-19 vaccine or 1 dose of a single-dose vaccine. See [OHA’s School and School-Based Programs Vaccine Rule FAQs](#) for additional information.
  - (b) Requests for an exception to the vaccination requirement will be processed as provided by Human Resources.
3. ***Vaccination Optional for Students***
  - (a) The district encourages students and families who are eligible to be vaccinated, to protect their health and reduce the risk of spreading the virus at school, to families, and in the community.

#### b. Testing

Viral testing is a public health measure that supports detection of COVID-19 and prevention against its spread.

1. ***Types of COVID-19 Testing***
  - (a) **Screening testing** is testing of individuals who do not have symptoms and have not been exposed to COVID-19, to determine if they are currently infected with the virus. Please see more information under District Testing Options below.
  - (b) **Diagnostic testing** is viral testing of individuals who have symptoms or have been exposed to COVID-19, to determine if they are currently infected with the virus. It is recommended and encouraged for persons who develop symptoms. There are two types of available diagnostic tests, using samples from the nose or mouth:
    - (1) Laboratory molecular (PCR) test: Detects the presence of the virus’s genetic material and can be used with both symptomatic and asymptomatic individuals. Results are highly reliable and typically available in 1–3 days.

- (2) Rapid antigen test: Detects specific proteins from the virus and produces results within 15–30 minutes. Rapid tests are faster than PCR tests, but are less likely to detect the virus, particularly among asymptomatic individuals.

## **2. District Testing Options**

### (a) Optional Screening Testing

- (1) Students may participate in a free screening testing program offered by the Oregon Health Authority in partnership with the University of Oregon. Test kits, which use saliva samples, are sent home with the student, who then return them to school on a weekly basis. Participants receive their results through a secure online portal, typically one to two days after the tests are returned to the school. For additional information, see the [UO K–12 Screening Testing](#) webpage.
- (2) The Oregon Health Authority provides additional information about free screening testing programs for district staff, families, and students on their [website](#).

### (b) Optional On-Site Testing

- (1) Rapid antigen testing (e.g. BinaxNOW) is available to students and staff who develop symptoms while on campus. Parent/guardian written consent is required for students under the age of medical consent.
  - i. [Consent form for students 14 years and under](#)
  - ii. [Consent form for students 15 years and older](#)

### (c) Optional Take-Home Testing

- (1) Rapid antigen testing take-home test kits (e.g. iHealth) may be offered to students and staff at increased risk of severe illness, regardless of vaccination status, who have been exposed to COVID-19 at their school or district worksite within the previous 10 days. Examples of individuals who may be at increased risk include those with underlying medical conditions or immunocompromised status, individuals age 65 and older, and those who live with individuals at increased risk.

## **3. Community Testing Options**

- (a) A list of testing locations is available on [Lane County's COVID-19 testing](#) webpage.
- (b) Additionally, every home in the U.S. is eligible to receive free at-home COVID tests by mail through a [federally funded program](#). Complete the [online form here](#) to order.

## **c. Daily Screening**

### **1. Screening for Symptoms**

- (a) As always, staff and students who do not feel well should stay home.
- (b) Staff and students may return to school and work after being ill consistent with the [guidelines](#) published by the Oregon Department of Education and Oregon Health Authority.

2. If an individual has any primary COVID symptoms as described below, they should follow the procedures outlined below in [Section IV. COVID Case Response Protocols](#) and [QHA and ODE's Communicable Disease Guidance for Schools](#) (pages 9-11, Symptom-Based Exclusion Guidelines).
3. **Primary COVID-19 Symptoms**
  - (a) Temperature of 100.4° F or higher or chills
  - (b) Cough
  - (c) Shortness of breath or difficulty breathing
  - (d) New loss of taste or loss of smell

#### d. Face Masks

1. Effective March 12, 2022, face coverings are optional for students, volunteers and fully vaccinated contractors and employees, with limited exceptions such as in healthcare settings.
2. Any staff or contractors who are not fully vaccinated and are permitted to be on campus with an approved religious or medical exception, based upon approved HR accommodations, may be required to wear face masks indoors.
3. A staff member who has had a positive case of COVID-19 is required to wear a well-fitting face mask for 5 additional days following their 5-day isolation period.
4. Individuals may choose to mask based on their individual risk assessment (e.g., increased risk for severe disease or family or community members at increased risk for severe disease).
5. The district will provide a mask to any staff, student, volunteer or visitor upon request.

#### e. Physical Distancing

While new guidance eliminates the requirement to maintain physical distance, it is still recommended that individuals at high risk for severe illness avoid crowds.

#### f. Hand Hygiene and Respiratory Etiquette

1. Regular handwashing is one of the best ways to remove germs and prevent illness. All individuals should clean their hands frequently with handwashing for at least 20 seconds or alcohol-based hand sanitizer with 60–96% alcohol. There are key times when you are likely to get and spread germs, and handwashing after these times is essential:
  - (a) Before, during and after preparing food.
  - (b) Before and after eating food.
  - (c) Before and after using a hand-operated water fountain.
  - (d) Before and after caring for someone at home who is sick with COVID-19 symptoms, vomiting or diarrhea.
  - (e) Before and after treating a cut or wound.
  - (f) After using the toilet.
  - (g) After changing diapers or cleaning up a child who has used the toilet.
  - (h) After coughing, sneezing or blowing nose.
  - (i) After touching an animal, animal feed, or animal waste.
  - (j) After handling pet food or pet treats.

- (k) After touching garbage.
- 2. All individuals should avoid touching their eyes, nose, or mouth with gloves or unwashed hands.
- 3. Schools will teach and support hand hygiene and respiratory etiquette.

#### **g. Ventilation and Airflow**

1. Air circulation and filtration are helpful factors in reducing airborne viruses. The district and its schools will operate ventilation systems properly and will consider and implement ways to increase circulation of outdoor air as much as possible, including by:
  - (a) Setting ventilation systems to increase air exchanges, increase the amount of outside air where possible, and minimize recirculation of indoor air;
  - (b) Enhancing building ventilation and filtration systems where feasible, following current guidance; and/or
  - (c) Opening windows and doors while keeping student safety and school security in mind.
2. Air purifying devices have been installed in the ventilation systems in all 4J buildings to help neutralize and remove viruses and other particles from the air without producing ozone or other harmful byproducts. These units are installed and operating in every building. They are not visible from inside classrooms, as they are installed in the building's HVAC system. The devices use a technology called bipolar ionization (BPI) that is in use in schools, office buildings, airports, hospitals and other community buildings around the world. Information regarding the BPI units can be found here:  
<https://www.4j.lane.edu/2021/01/ventilation-system-upgrades/>
3. During the pandemic, 4J buildings will operate exhaust fans 24 hours a day, five days a week, to increase air exchanges within the building. Specific procedures may vary in older buildings but all the ventilation system run times have been increased districtwide.
  - (a) Programmable ventilation systems will provide up to 100% outside air when air quality and temperatures allow.
  - (b) Kitchens or cooking areas' local exhaust ventilation systems will be operated when these spaces are occupied. Kitchen exhaust ventilation may be operated even when these spaces are not occupied to supplement ventilation for other areas of the building.
  - (c) Restroom exhaust fans will be operated when the building is occupied.
4. Ventilation systems will be checked and maintained by maintenance staff on a regular basis. The district will consider modifications or enhancements of building ventilation and filtration systems where feasible, following current guidance.
5. Fans can be an effective way to increase the circulation of outdoor air.
  - (a) Consideration will be given to using fans or box fans positioned in open windows to draw fresh outdoor air into the classroom via one window, and flush indoor air out of the classroom via another window.
  - (b) Fans will not be used in rooms with closed windows and doors, as the fans would be recirculating the classroom air and not providing circulation of fresh air.

- (c) Fans will not be used if it is determined that they pose a safety or health risk, such as increasing exposure to smoke, pollen or other allergens or exacerbating asthma symptoms.
6. The district will consider the need for increased ventilation in areas where students with special healthcare needs receive medication or treatments.
7. When feasible, bus windows will be kept open in order to improve air ventilation. Even partially opened windows will improve fresh air circulation on the bus.
8. Schools are encouraged to conduct some activities and classes outside when reasonable.

#### **h. Cleaning and Disinfection**

1. The district requires routine, systematic cleaning and/or disinfection of classrooms, work spaces, bathrooms, and activity areas.
2. Custodial staff will have primary responsibility for daily cleaning and/or disinfection as outlined in [COVID-19 Cleaning & Disinfection Protocol](#).
3. Custodial staff will perform cleaning and/or disinfecting of all high touchpoints throughout the buildings at least once per day, including but not limited to restrooms, common areas, door knobs, light switches, and shared student desks throughout the building.
4. Disinfectant spray and towels or disinfectant wipes, with use instructions, will be made available in each classroom. Staff may use these to periodically disinfect common touchpoints within the classroom.
5. Disinfectant spray and towels or wipes will be supplied in all staff-designated areas to be used throughout the day as needed or desired.

### **IV. COVID Case Response Protocols**

#### **a. Definitions**

1. “Isolation” means separating people with a contagious disease including COVID-19 from other people to prevent disease spread.
2. “Exclusion” means keeping an individual with certain contagious diseases or symptoms out of school or work to prevent possible disease spread.
3. “Quarantine” means a restriction of persons who were exposed to certain contagious diseases to monitor whether they become sick and to prevent the spread of disease.
  - (a) As of March 12, 2022, Oregon has paused detailed contact tracing and quarantine of exposed persons for the general population. Quarantine due to exposure is no longer required in K–12 settings, regardless of vaccination status.
4. “Confirmed case” means an individual who tests positive using a diagnostic (viral) test.
5. “Presumptive case” means a person who:
  - (a) Has a positive test result from an at-home antigen test kit; OR
  - (b) Has at least 2 primary COVID-19 symptoms and who had close contact to a confirmed COVID-19 case 2 to 14 days before symptom onset.
6. “Primary COVID-19 symptoms” refers to the following:
  - (a) Temperature of 100.4° F or higher or chills

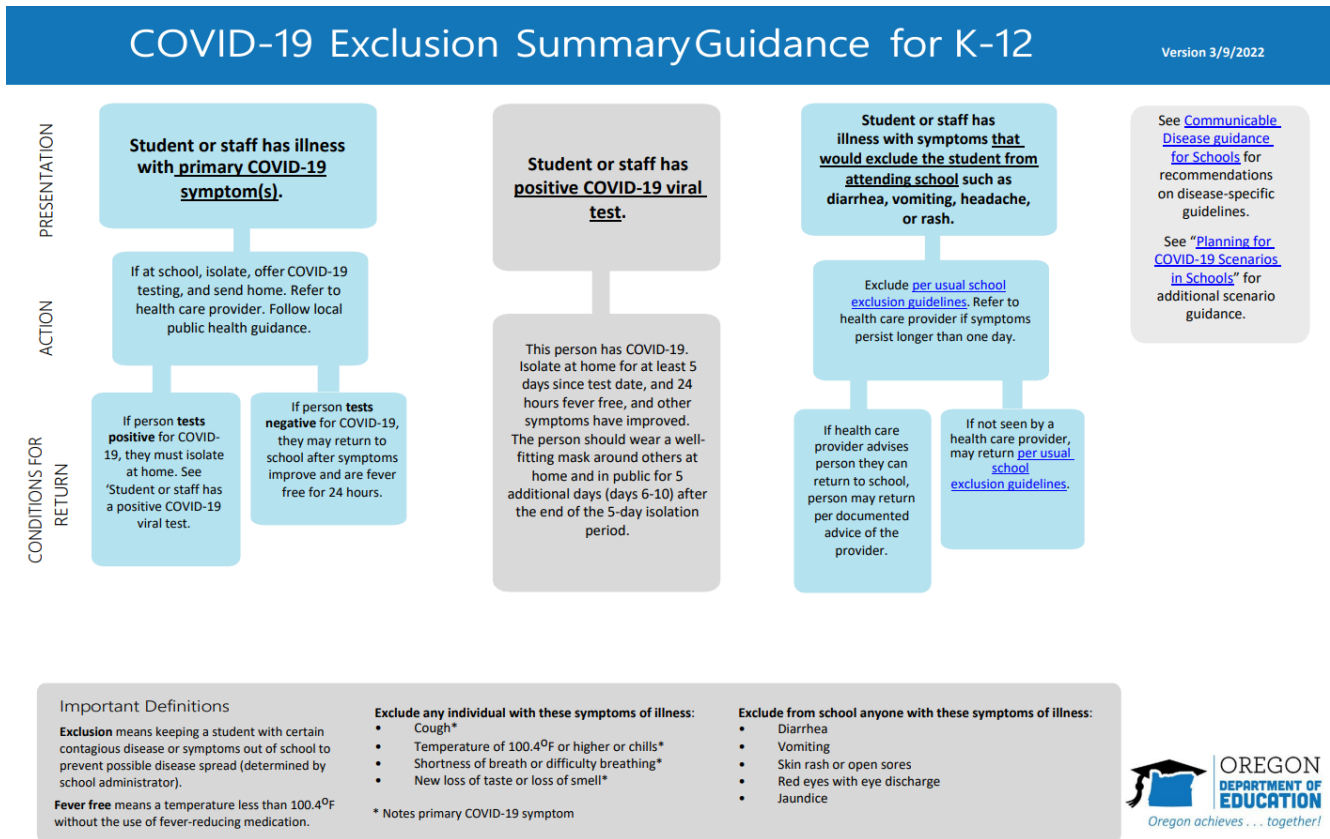


- (b) Cough
  - (c) Shortness of breath or difficulty breathing
  - (d) New loss of taste or loss of smell
7. “Non-primary COVID-19 symptoms” refers to the following:
- (a) Fatigue
  - (b) Muscle or body aches
  - (c) Headache
  - (d) Sore throat
  - (e) Nasal congestion or runny nose
  - (f) Nausea or vomiting
  - (g) Diarrhea

#### **b. Exclusion and Isolation Measures**

1. Students and staff must be excluded from school and work, at times, to reduce the spread of communicable diseases including COVID-19. The following protocols apply to staff and students, regardless of their vaccination status.
2. Administrators will exclude from schools, and supervisors will exclude from the district worksite, all persons diagnosed with, or presumed to have, COVID-19, consistent with [OAR 333-19-0010](#) and the [Communicable Disease Guidance](#) published by the Oregon Department of Education and Oregon Health Authority.
3. Students and staff who do not feel well should stay home. If they have any primary symptoms of COVID-19, they are encouraged to seek viral testing. If they have non-primary symptoms that persist for more than one day, they should consider consulting their healthcare provider who can determine if viral testing is advised.
4. Students who report or develop symptoms of an undiagnosed illness at school will be assessed. Students with multiple primary COVID-19 symptoms or a diagnosed case of COVID will be isolated in the designated isolation area in the school, with adequate space and staff supervision and symptom monitoring by a school nurse, other school-based health care provider, or other school staff. Students will remain in the isolation area until a parent, guardian or emergency contact arrives to take them home.
5. Persons who have COVID-19 are to follow all instructions from the district point of contact with Lane County Public Health. The district point of contact will consult with LCPH as needed. In general, the person should isolate until at least 5 days after their symptom onset or positive test, 24 hours after any fever has resolved without the use of fever-reducing medicine, and other symptoms are improving.
6. For more detailed information, see page 9 of [OHA and ODE’s Communicable Disease Guidance for Schools](#) and page 16 of the same document, linked here: [ODE’s COVID-19 Exclusion Summary Guidance Chart](#).

## 7. Symptom-Based Exclusion Summary Charts



Symptoms	COVID Test Status	Return to School or Work	Notification & Documentation
1+ primary COVID symptoms	Negative	24 hours after fever is resolved without the use of fever-reducing medicine AND other symptoms are improving	N/A
1 primary COVID symptom	Not tested	24 hours after fever is resolved without the use of fever-reducing medicine AND other symptoms are improving	N/A
2+ primary COVID symptoms	Not Tested	5 day exclusion starting from the first day of symptoms (Day 0) AND 24 hours after fever is resolved without the use of fever-reducing medicine AND other symptoms are improving	N/A
Any or none	Positive	5 day exclusion starting from the date of the positive test (Day 0) AND 24 hours after fever is resolved without the use of fever-reducing medicine AND other symptoms are improving	Follow district protocols for documentation

### **c. Notification to District**

1. District employees must notify their supervisor and not come to work, if the employee has a confirmed or presumptive diagnosis of COVID-19.
2. Parents must not send their student to school and should notify their school if the student has a confirmed or presumptive diagnosis of COVID-19.
3. If a person self-discloses that they have a confirmed or presumptive diagnosis of COVID-19, they will be directed to leave the campus and the school administrator will be notified. If the person is a student, a parent or designated contact will be contacted to take them home.
4. The administrator or designee will report all positive cases of COVID-19 to the district following established protocols.

### **d. Temporary Closures or Suspension of Activities**

1. COVID-19 creates the possibility of temporary closures where there are clusters of illness or in other circumstances. In such cases, the superintendent or designee or Lane County Public Health may temporarily close a classroom, school, department or other location, or may suspend or cancel a program or activity.

## **V. Additional Guidance**

### **a. Oregon Department of Education**

1. [ODE-OHA Communicable Disease Guidance for Schools](#) (rev. 8/2022)
2. [ODE Planning for the 2022-23 School Year web site](#)
3. [COVID-19 Resources for Childcare and Early Learning Providers](#)
4. [COVID-19 Exclusion Summary Guidance for K-12](#) (rev. 3/9/2022)
5. [Planning for Individualized COVID-19 Recovery Services](#) (rev. 1/4/2022)
6. [ODE Mental Health and Well-Being Resources](#)

### **b. Local, State and Federal Resources**

1. [Lane County COVID-19 Vaccine Clinics](#)
2. [Lane County COVID-19 Testing](#)
3. ODHS/OHA's [COVID-19 Testing in Oregon's K-12 Schools](#) (rev. 3/11/2022)
4. OHA's [Test To Stay FAQs](#) (rev. 2/4/2022)
5. OSAA's [COVID-19 Information](#) website
6. OSHA's [Rule Addressing COVID-19 Workplace Risks \(OAR 437-001-0744\)](#)
7. OHA's [COVID-19 Updates](#) website
8. OHA's [Interim Investigative Guidelines – COVID-19](#) (rev. 3/12/2022)
9. CDC's [COVID-19 County Levels](#)
10. CDC's [Operational Guidance for K-12 Schools and Early Care and Education Programs to Support Safe In-Person Learning](#) (rev. 8/11/2022)
11. U.S. Department of Health and Human Services [Free At-Home Testing By Mail](#)

**c. 4J Policy and Procedures**

1. [Board Policy JHCC](#) and [Administrative Rule JHCC-AR](#), Communicable Diseases—Students
2. [Board Policy GBEB](#) and [Administrative Rule GBEB-AR](#), Communicable Diseases—Staff
3. [Board Policy EBC/EBCA](#), Emergency Procedures and Disaster Plan
4. [COVID-19 Infection Prevention Cleaning and Disinfecting Protocols](#)
5. [4J Cleaning and Disinfecting Protocols For a Known or Suspected Case of COVID-19](#)