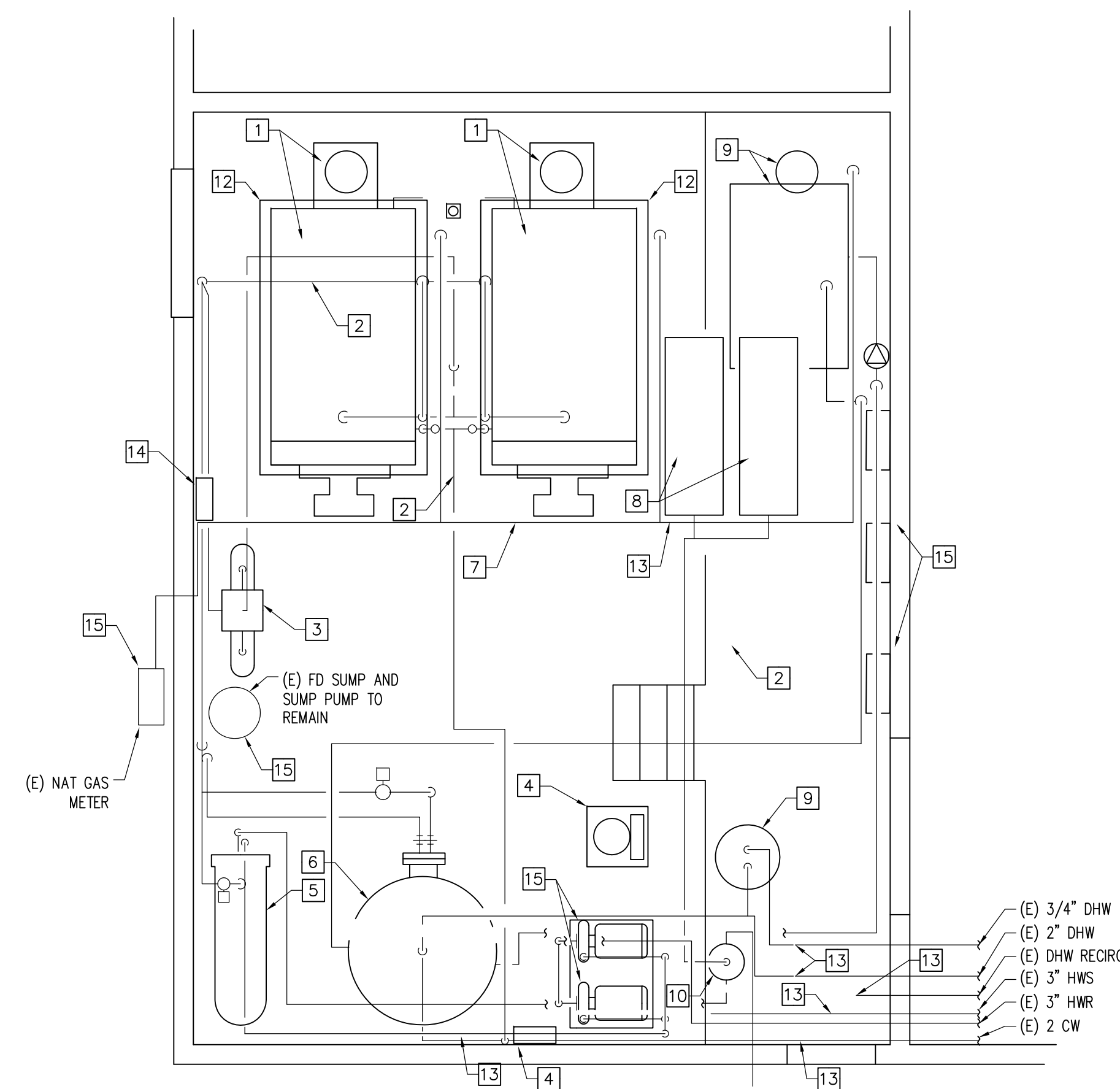


DEMOLITION NOTES

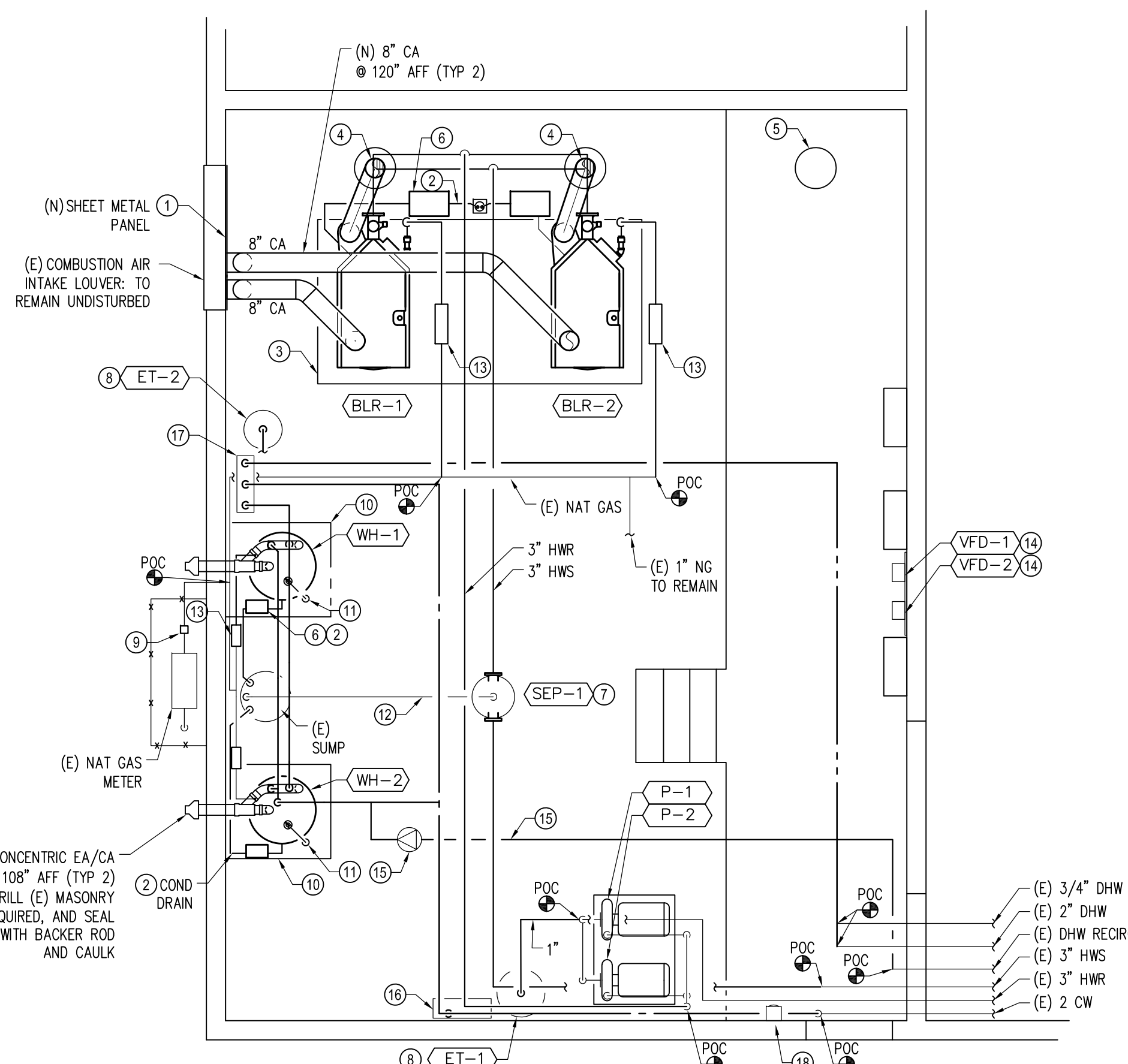
- 1 REMOVE TWO (E) STEAM BOILERS, NATURAL GAS BURNERS, ASSOCIATED EXHAUST FLUES, CONTROLS AND ACCESSORIES. RETAIN (E) ELECTRICAL FEEDERS BACK TO NEAREST JUNCTION BOXES SUITABLE FOR EXTENDING TO NEW BOILERS.
- 2 REMOVE ALL STEAM, CONDENSATE & MAKEUP PIPING. REMOVE SUPPORTS NOT USABLE FOR SUBSEQUENT NEW PIPING. RETAIN ANY USABLE SUPPORTS WHERE NEW PIPING AND/OR ACCESSORIES MAY BE MOUNTED IN THE SAME LOCATION(S).
- 3 REMOVE ONE (E) CONDENSATE PUMP PACKAGED UNIT, ONE (E) PNEUMATIC CONTROL PANEL, AND ASSOCIATED ELECTRICAL FEEDER AND ACCESSORIES.
- 4 REMOVE ONE (E) INSTRUMENT AIR COMPRESSOR, INSTRUMENT AIR DRYER, AND ALL ACCESSIBLE PNEUMATIC CONTROL COMPONENTS AND LINES. AS DIRECTED BY DISTRICT, RETAIN IN-PLACE EXISTING CONTROL ENCLOSURES THAT ARE IN GOOD CONDITION FOR FUTURE USE.
- 5 REMOVE ONE (E) SHELL-AND-TUBE DOMESTIC WATER HEAT EXCHANGER AND ALL ASSOCIATED SUPPORTS AND ACCESSORIES.
- 6 REMOVE ONE (E) DOMESTIC HOT WATER STORAGE TANK (APPROX. 2000 GALLONS).
- 7 REMOVE NAT GAS PIPING RUNOUTS TO (E) BOILERS & WATER HEATER, RETAINING (E) MAINS AND ANY BRANCH PIPING SUPPLYING EQUIPMENT TO REMAIN IN SERVICE.
- 8 REMOVE TWO (E) OVERHEAD HYDRONIC EXPANSION TANKS AND ASSOC. PIPING.
- 9 REMOVE ONE (E) GAS DHW HEATER AND ONE (E) ELECTRIC DHW HEATER, ASSOCIATED EXHAUST FLUE, PIPING, ACCESSORIES, ASSOCIATED CONTROLS, AND ELECTRICAL FEEDERS BACK TO BREAKER PANEL.
- 10 REMOVE ONE (E) AIR SEPARATOR.
- 11 REMOVE ALL FUEL OIL PIPING AND APPURTENANCES, IF ANY, INSIDE BOILER ROOM. CUT OFF ORIGINAL OIL PIPING FLUSH WITH CONCRETE, AND PLUG WITH A MINIMUM OF 6" OF NON-SHRINK GROUT.
- 12 REMOVE TWO (E) BOILER CONCRETE HOUSEKEEPING PADS DOWN TO ORIGINAL SLAB FINISHED FLOOR ELEVATION. (NEW HOUSEKEEPING PADS WILL BE INSTALLED OVER THE TOP OF THIS AREA.)
- 13 DEMO (E) DHW, HWS, HWR, AND NAT GAS PIPING INSIDE BOILER ROOM BEYOND APPROXIMATELY THIS POINT.
- 14 CAREFULLY REMOVE ONE (E) BOILER MAKEUP WATER STATION, AND SET ASIDE FOR RE-INSTALLATION AT NEW LOCATION SHOWN ON PLANS.
- 15 **DO NOT DEMO EXISTING EQUIPMENT TO REMAIN UNDISTURBED:**
 - a) HWS/R PUMPS AND ASSOCIATED PIPING BEYOND POINT OF CONNECTION SHOWN ON PLANS;
 - b) SUMP PUMP AND ASSOCIATED ELECTRICAL SERVICE.
 - c) NATURAL GAS METER AND HEADER INTO BUILDING (EXCEPT FOR INSTALLATION OF SEISMIC SHUTOFF VALVE).
 - d) (E) ELECTRICAL PANELS.



13 MECHANICAL PLAN - DEMOLITION
1/4" = 1'-0"

KEYED SHEET NOTES

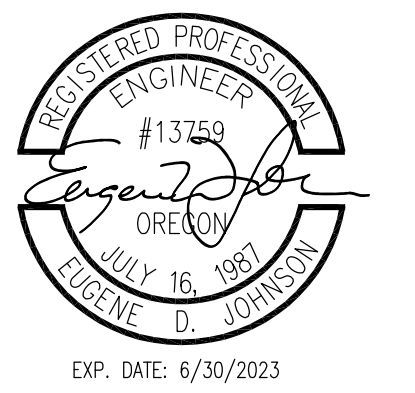
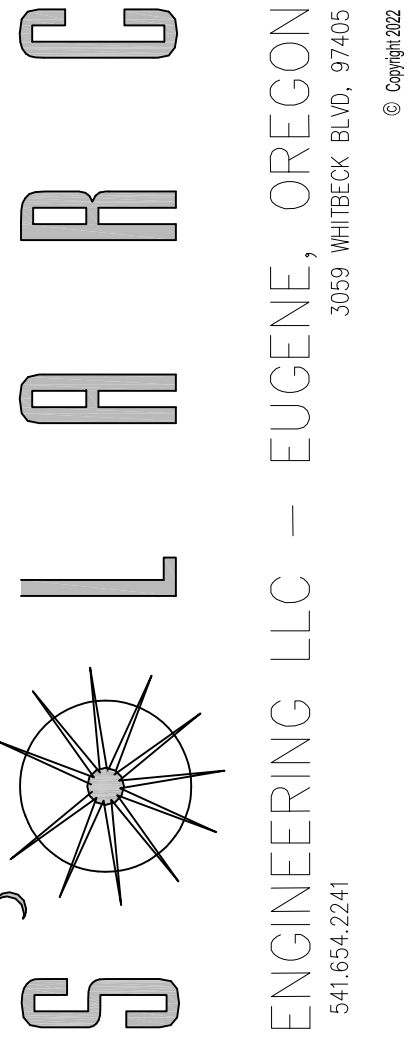
- 1 INSTALL GALVANIZED SHEET METAL PANEL, COVERING ENTIRE AREA OF WALL SLEEVE / EXISTING LOUVER. MIN 18GA. REMOVE (E) BIRDSCREEN PRIOR TO INSTALLATION. MAKE FLAT TAP CONNECTION OF NEW FRESH AIR DUCTS TO SHEET METAL PANEL AS SHOWN.
- 2 INSTALL DRAIN PIPING FROM PH NEUTRALIZER UNITS TO (E) FLOOR DRAIN OR SUMP. PIPING TO BE PVC, SIZED TO MATCH OUTLET CONNECTION ON NEUTRALIZER(S), OR MINIMUM 3/4" SCHEDULE 40.
- 3 INSTALL NEW BOILER HOUSEKEEPING PAD. SEE DETAIL 08/M501.
- 4 INSTALL NEW FLUE THROUGH (E) ROOF CURB AS SHOWN IN DETAIL 06/M501.
- 5 INSTALL CAP ON (E) ROOF CURB AS SHOWN IN DETAIL 07/M501.
- 6 INSTALL NEUTRALIZERS FOR NEW WATER HEATERS. MOUNT FLAT TO CONCRETE, AND ARRANGE TO CONFORM TO OEM INSTALLATION GUIDE.
- 7 INSTALL NEW AIR SEPARATOR (SEP-1) IN-LINE WITH HWS PIPING AT APPROX. 10' AFF WITH 1" BLOWDOWN/DRAIN (SEE ITEM 12).
- 8 INSTALL NEW VERTICAL EXPANSION TANKS (ET-1,2) ON SLAB.
- 9 INSTALL NEW NAT GAS SEISMIC SHUTOFF VALVE. PROVIDE SUPPORTS AS REQUIRED, EACH SIDE OF NEW SHUTOFF VALVE INSIDE (E) CHAINLINK FENCE ENCLOSURE.
- 10 INSTALL NEW WATER HEATER HOUSEKEEPING PAD. SEE DETAIL 08/M501.
- 11 EXTEND PSV DRAIN PIPE TO SUMP, 1" COPPER, NOT SHOWN FOR CLARITY.
- 12 EXTEND 1" BLOWDOWN / DRAIN PIPE TO WEST FLOOR DRAIN SUMP. INSTALL FULL-PORT BALL VALVE IN ACCESSIBLE LOCATION FOR BLOWDOWN AND ARRANGE TO AVOID SPLASHBACK TO MAINT. STAFF.
- 13 INSTALL NEW BOILER GAS REGULATORS (FURNISHED BY OWNER / INSTALLED BY CONTRACTOR) AND NEW WATER HEATER GAS REGULATORS (FURNISHED AND INSTALLED BY CONTRACTOR).
- 14 PROVIDE 3/4" PLYWOOD BACKPLANE AND INSTALL NEW VARIABLE FREQUENCY DRIVES AT LOCATION SHOWN. PAINT BACKPLANE MACHINE ROOM GRAY, MATCHING ADJACENT. REFER TO SPECIFICATIONS.
- 15 CONNECT (E) DHW RECIRC PIPING TO NEW CW PIPING AT NEW WATER HEATERS. RELOCATE (E) RECIRC PUMP TO LOCATION SHOWN.
- 16 RE-INSTALL (E) BOILER MAKEUP WATER STATION AT LOCATION SHOWN AND CONNECT TO NEW CW PIPE ABOVE. REFER TO DEMO NOTE 14.
- 17 PROVIDE NEW TEMPERATURE MIXING VALVE AT LOCATION INDICATED. REFER TO PIPING DIAGRAM DETAIL 8/M501.
- 18 RELOCATE (E) E-STOP SWITCH TO LOCATION SHOWN. INSTALL IN CONFORMANCE WITH STATE BOILER CODE.



15 MECHANICAL PLAN - NEW WORK
1/4" = 1'-0"

GENERAL NOTES

1. PROVIDE ALL COMPONENTS AND LABOR NECESSARY SO THAT INSTALLATION CONFORMS TO THE STANDARD FOR CONTROLS AND SAFETY DEVICES FOR AUTOMATICALLY FIRED BOILERS, ASME CSD-1, LATEST EDITION.
2. ALL WORK SHALL CONFORM TO REQUIREMENTS OF LATEST EDITIONS OF APPLICABLE SECTIONS OF BOILER, MECHANICAL, AND ELECTRICAL CODES FOR THE PROJECT LOCATION.
3. PROVIDE CO DETECTOR IN BOILER ROOM WITH AUDIBLE AND VISIBLE ALARM (SIREN & STROBE).
4. THOROUGHLY CLEAN AND PREP ENTIRE EQUIPMENT LEVEL SLAB LEVEL AFTER INSTALLATION OF EQUIPMENT HOUSEKEEPING PADS AND PAINT WITH OIL/GREASE RESISTANT MACHINE ROOM EPOXY PAINT. COLOR TO BE CHOSEN BY DISTRICT.
5. CONTRACTOR TO VERIFY ALL FIELD CONDITIONS DURING PRE-BID PERIOD. CONTRACTOR'S BID SHALL INCLUDE ANY AND ALL ADJUSTMENTS TO LOCATION OF NEW EQUIPMENT AND WORK SHOWN ON THESE DRAWINGS TO AVOID INTERFERENCE WITH EXISTING PIPING, CONDUIT, EQUIPMENT TO REMAIN, AND STRUCTURAL FEATURES.



© Copyright 2022
The drawings, specifications and other documents related to this project are protected under law and contract. Reproduction of these documents is authorized for the sole purpose of constructing, maintaining and using this project only. Use of these documents for any other purpose is not permitted without the original designer's written authorization.

**4J MONROE MIDDLE SCHOOL
BOILER REPLACEMENT - 2023**
EUGENE SCHOOL DISTRICT 4J
2800 BAILEY LANE
EUGENE, OREGON 97401

PROJECT NO: 22-004
ISSUE DATE: 11/25/22
DRAFT DATE: 11/22/22
DRAWN BY: EDJ
CHECKED BY: GJ
REVISED:

MECHANICAL
PLANS
DEMO & NEW

M-101
SHEET X OF X