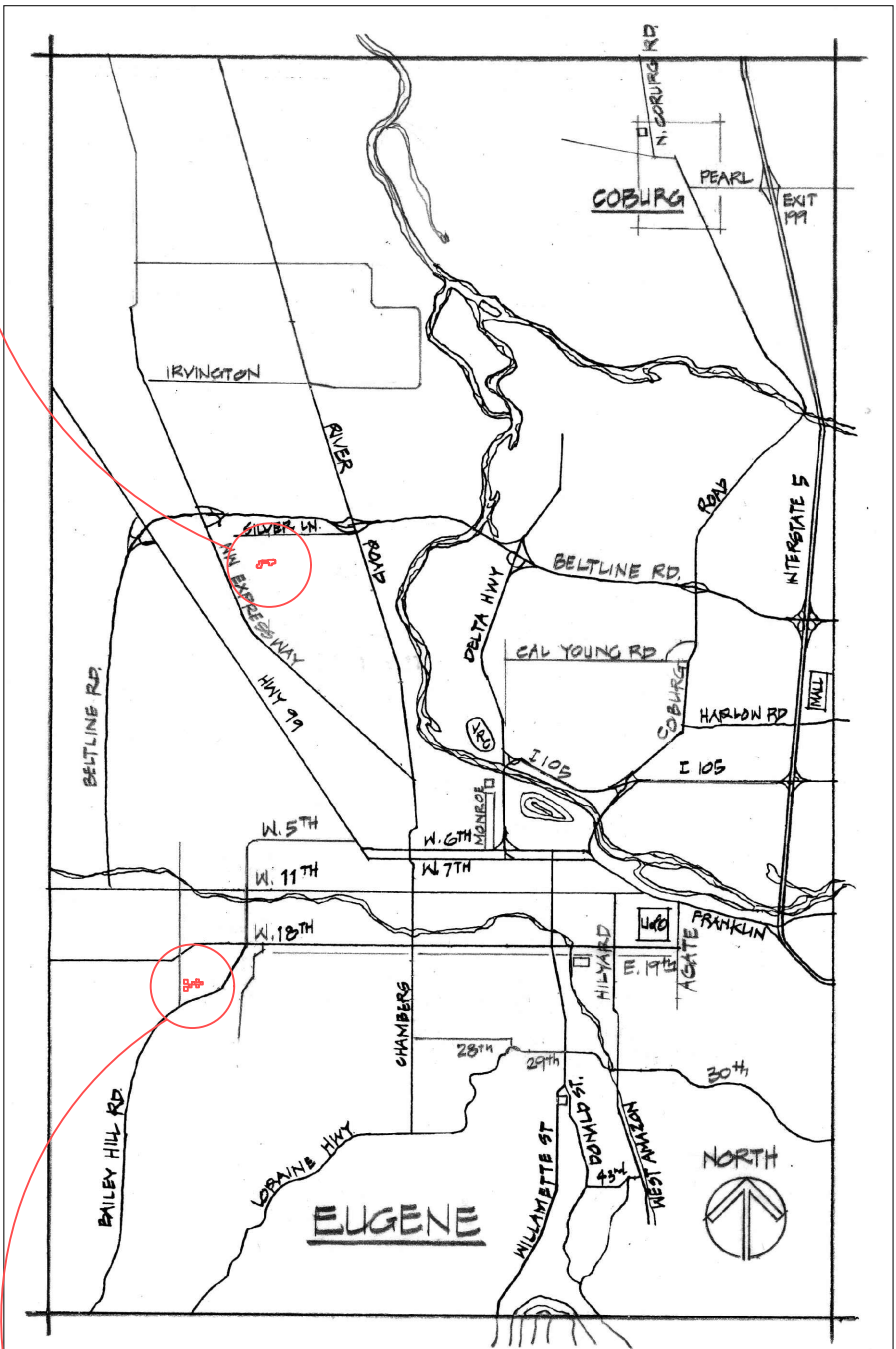


NEW TWO-SIDED MONUMENT READERBOARDS FOR TWO MIDDLE SCHOOLS

KELLY MIDDLE SCHOOL

850 HOWARD AVENUE



KENNEDY MIDDLE SCHOOL

2200 BAILEY HILL ROAD

OWNER

EUGENE SCHOOL DISTRICT 4J
715 WEST 4TH AVENUE
EUGENE, OREGON 97402

CONTACT

KIRK GEBB, PROJECT MANAGER
541-790-7431
gebb@4j.lane.edu

SHEET INDEX

COVER	KELLY SITE PLAN
KEL-1	KELLY NEW SIGN DETAILS
KEL-2	KENNEDY SITE PLAN
KEN-1	KENNEDY NEW SIGN DETAILS
KEN-2	



Facilities
Management
School District 4J
715 W. 4th Avenue
Eugene, OR 97402
(541) 790-7400

GENERAL CONTRACTOR SCOPE

1. GENERAL CONTRACTOR AND SUBCONTRACTORS SHALL PAY THEIR LABORERS PREVAILING WAGE.
2. GENERAL CONTRACTOR SHALL PROVIDE ALL WORK NECESSARY TO INSTALL CONCRETE SIGN FOOTING AND MONSTRIP SURROUND (KENNEDY SITE ONLY).
3. GENERAL CONTRACTOR SHALL BORE AND/OR TRENCH TO INSTALL CONDUITS FROM THE SIGNS TO THE POWER AND FIBER OPTIC LOCATIONS WITHIN THE BUILDING, FILL AND SEED AS NEEDED.
4. GENERAL CONTRACTOR SHALL PULL AND TERMINATE WIRE FOR POWER WITH SUFFICIENT EXTRA BUNDLES AT EACH END, LEAVE PULLS STRINGS IN CONDUITS FOR BOTH POWER AND FIBER OPTIC CABLING.
5. GENERAL CONTRACTOR TO COORDINATE WITH THE SIGN COMPANY ON LOCATIONS OF ANCHORS, ELECTRICAL AND FIBER PATHWAYS AND ANY BOXES REQUIRED.
6. GENERAL CONTRACTOR SHALL REMOVE EXISTING SIGNS AS NOTED - PATCH, FILL AND SEED AS NEEDED.
7. GENERAL CONTRACTOR SHALL OBTAIN REQUIRED ELECTRICAL AND EROSION PERMITS.

SIGN COMPANY SCOPE

1. SIGN COMPANY SHALL PROCURE THE LED MESSAGE CENTERS FROM DAKTRONICS.
2. SIGN COMPANY SHALL FURNISH THE GENERAL CONTRACTOR WITH THE SIGN SUPPORT POSTS.
3. SIGN COMPANY SHALL FABRICATE AND INSTALL THE SIGN HOLDING CABINETS AS SHOWN.
4. SIGN COMPANY SHALL MAKE FINAL ELECTRICAL AND FIBER OPTIC CONNECTIONS INSIDE THE SIGNS.
5. SIGN COMPANY SHALL OBTAIN ALL REQUIRED SIGN PERMITS.

OWNER SCOPE

1. OWNER SHALL PROVIDE AND INSTALL FIBER CABLE FROM THE SIGNS TO THE BUILDING MDF ROOMS.
2. OWNER SHALL MAKE FINAL CONNECTIONS INSIDE THE MDF ROOMS.

MESSAGE CENTER INFORMATION

KELLY - "DAKTRONICS" GALAXY OUTDOOR MESSAGE CENTER G56 SERIES, 19.8 MM RGB.
MODEL # G56-32X100-19.9-RGB-2V

KENNEDY - "DAKTRONICS" GALAXY OUTDOOR MESSAGE CENTER G56 SERIES, 19.8 MM RGB.
MODEL # G56-48X100-19.9-RGB-2V

NEW READERBOARDS
KELLY AND KENNEDY MIDDLE SCHOOLS

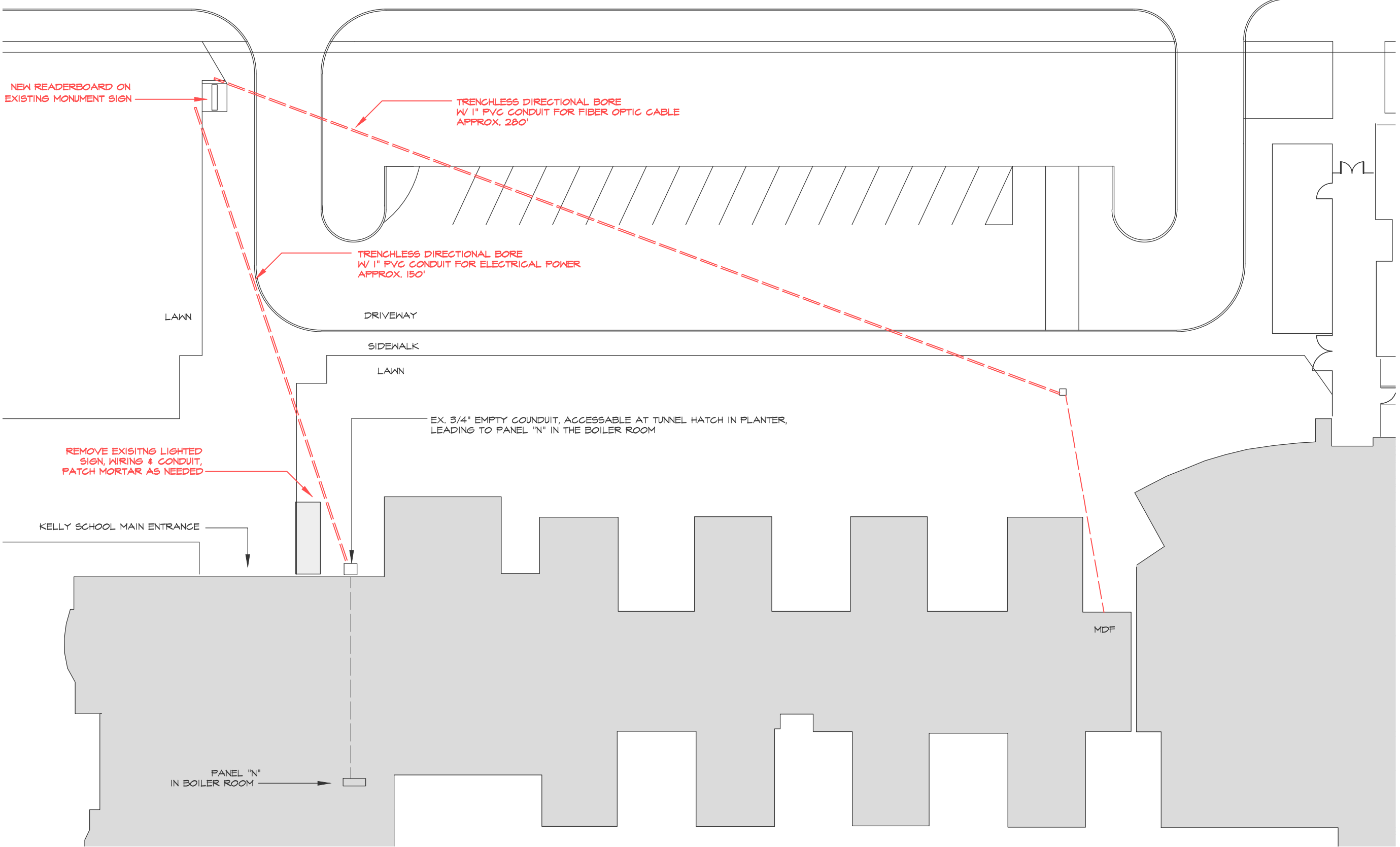
DATE: 9-28-2021
REV: 11-30-2021

DRAWN BY B. MARTIN

SHEET

COVER

HOWARD AVENUE



NEW READERBOARD ON EXISTING MONUMENT SIGN

TRENCHLESS DIRECTIONAL BORE W/ 1" PVC CONDUIT FOR FIBER OPTIC CABLE APPROX. 280'

TRENCHLESS DIRECTIONAL BORE W/ 1" PVC CONDUIT FOR ELECTRICAL POWER APPROX. 150'

LAWN

DRIVEWAY

SIDEWALK

LAWN

EX. 3/4" EMPTY CONDUIT, ACCESSABLE AT TUNNEL HATCH IN PLANTER, LEADING TO PANEL "N" IN THE BOILER ROOM

REMOVE EXISTING LIGHTED SIGN, WIRING & CONDUIT, PATCH MORTAR AS NEEDED

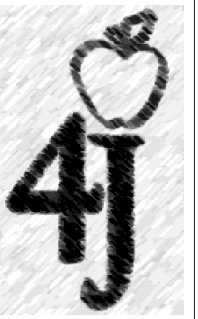
KELLY SCHOOL MAIN ENTRANCE

MDF

PANEL "N" IN BOILER ROOM



KELLY MIDDLE SCHOOL PLAN VIEW
SCALE: 1"=30'



Facilities Management
School District 4J
715 W. 4th Avenue
Eugene, OR 97402
(541) 790-7400

NEW READERBOARDS
KELLY AND KENNEDY MIDDLE SCHOOLS

DATE: 9-28-2021
REV:

DRAWN BY B. MARTIN

SHEET

KEL-1



Facilities Management
 School District 4J
 715 W. 4th Avenue
 Eugene, OR 97402
 (541) 790-7400

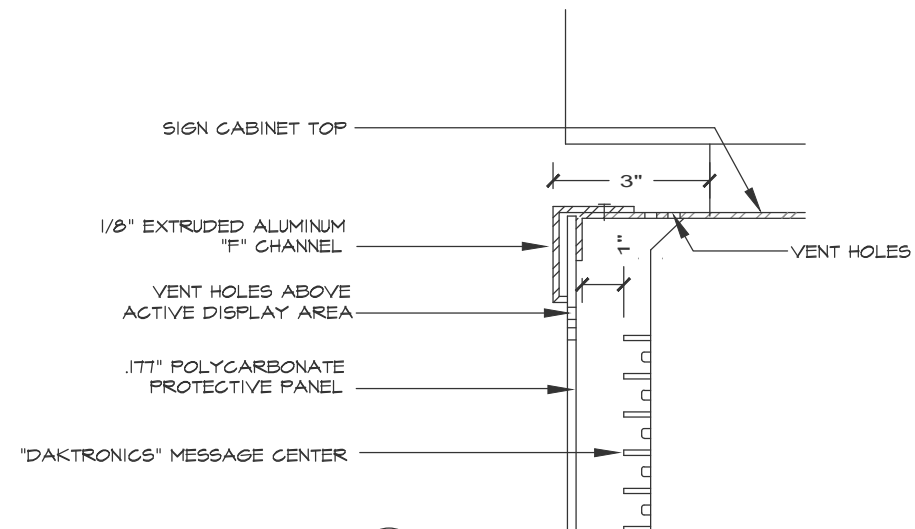
NEW READERBOARDS
 KELLY AND KENNEDY MIDDLE SCHOOLS

DATE: 9-28-2021
 REV: 11-18-2021

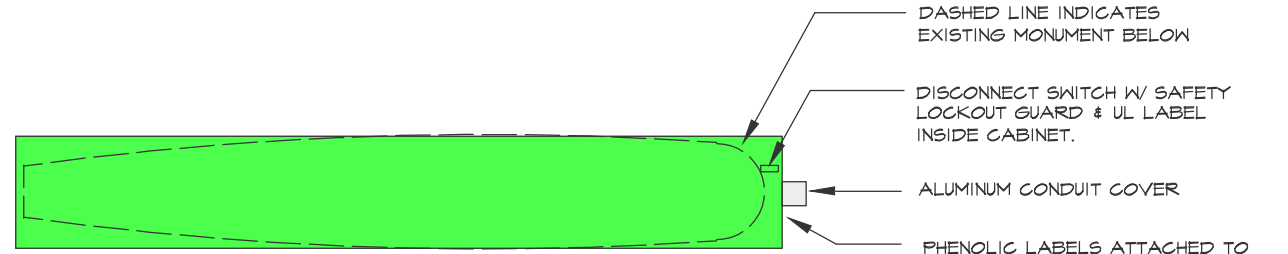
DRAWN BY B. MARTIN

SHEET

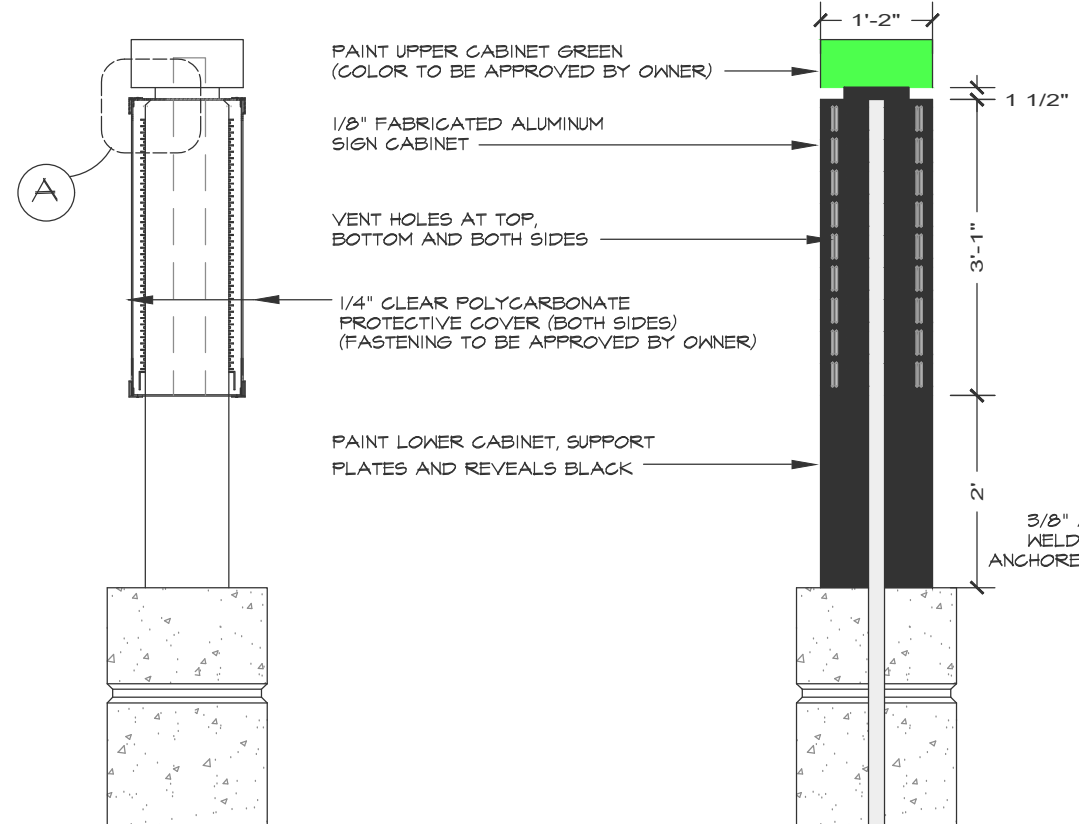
KEL-2



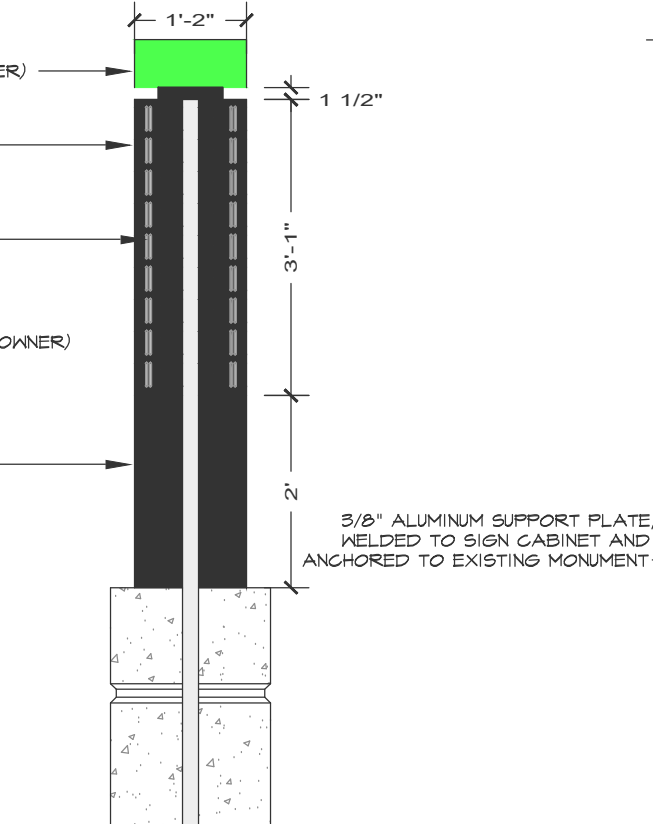
(A) KELLY SIGN DETAIL (BOTTOM SIMILAR)
 SCALE: 3" = 1'-0"



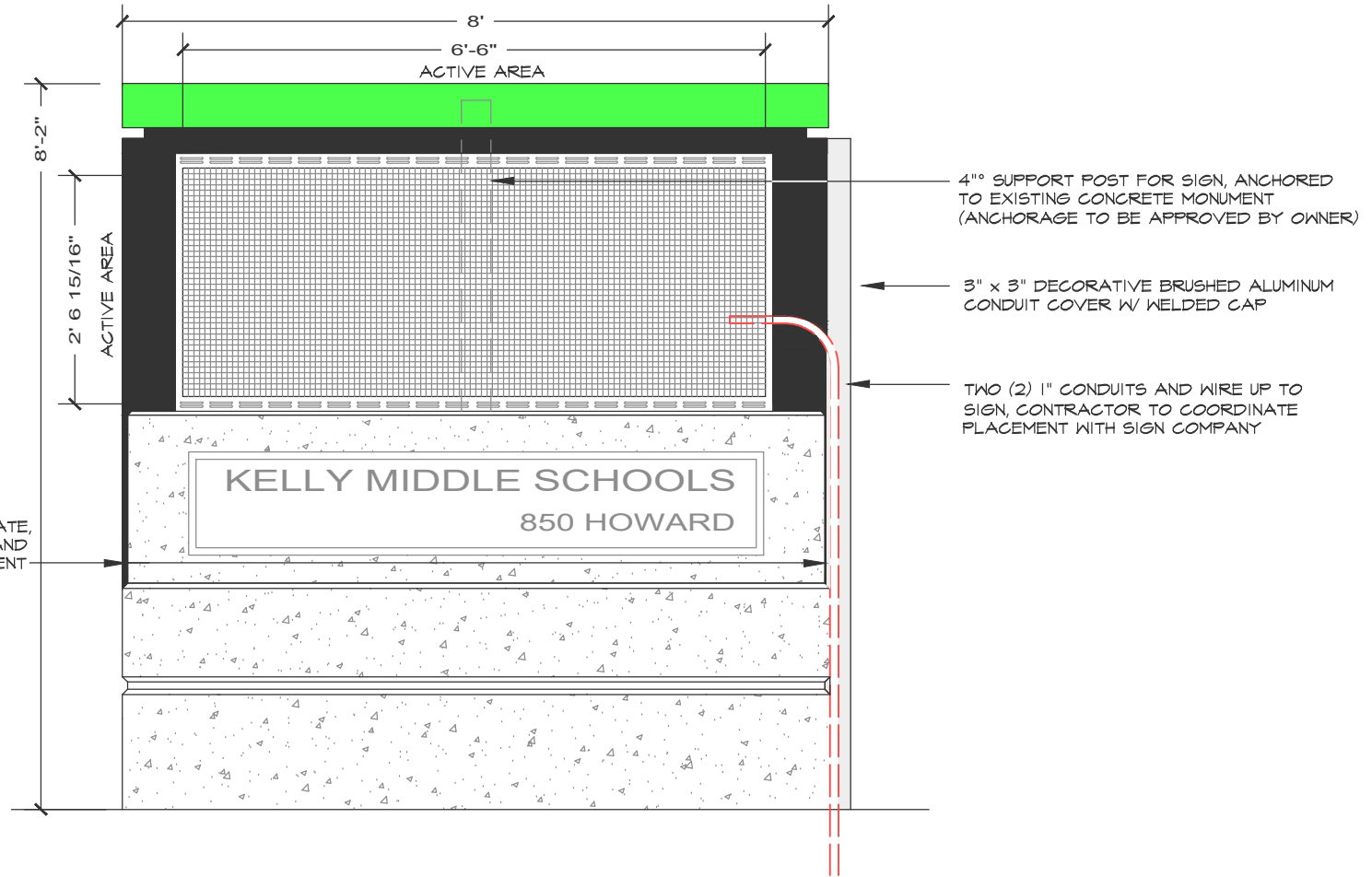
KELLY SIGN PLAN VIEW
 SCALE: 1/2" = 1'-0"



KELLY SIGN SECTION
 SCALE: 1/2" = 1'-0"



KELLY SIGN LOOKING SOUTH
 SCALE: 1/2" = 1'-0"



KELLY SIGN LOOKING WEST
 SCALE: 1/2" = 1'-0"



Facilities Management
 School District 4J
 715 W. 4th Avenue
 Eugene, OR 97402
 (541) 790-7400

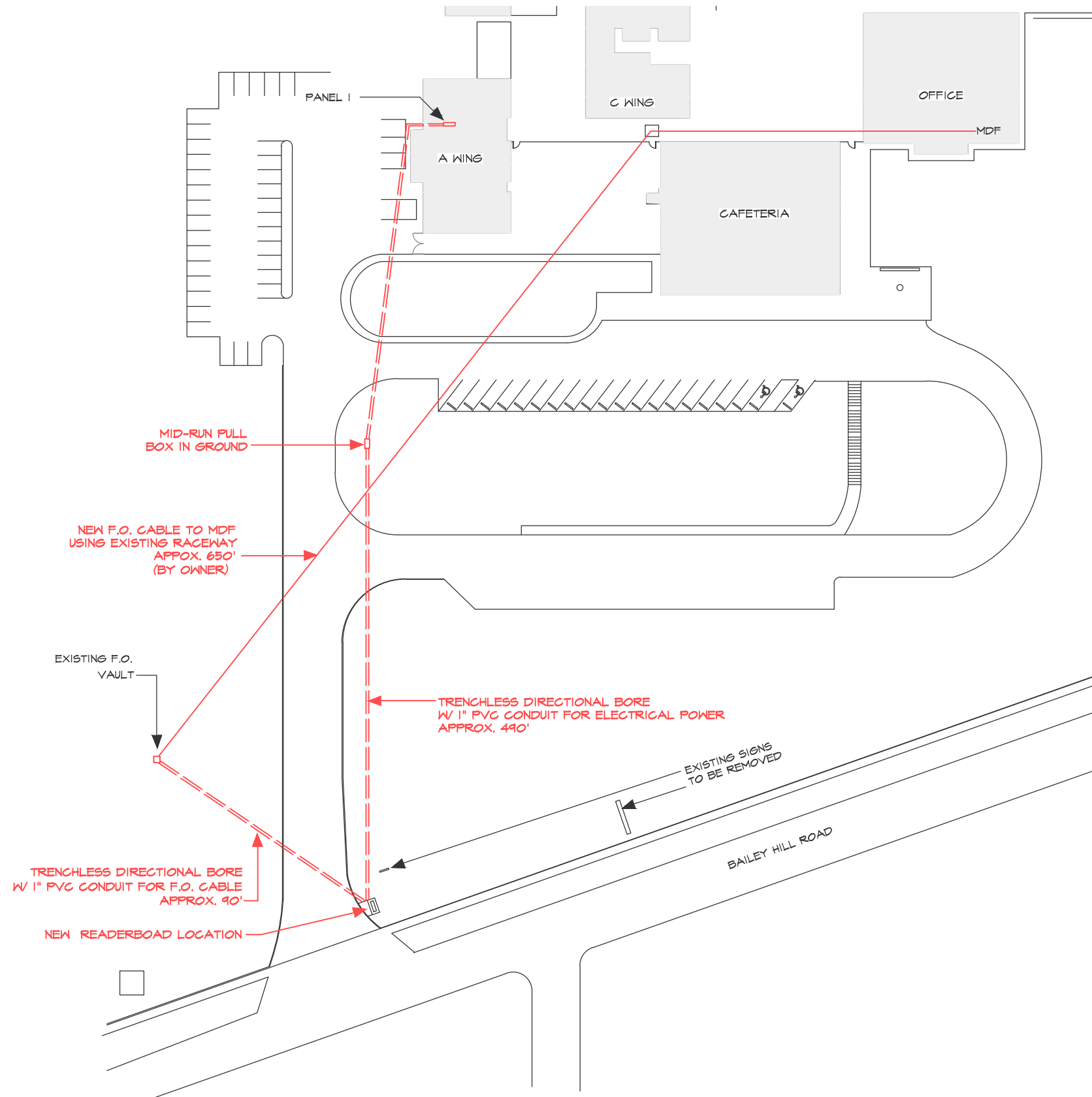
NEW READERBOARDS
 KELLY AND KENNEDY MIDDLE SCHOOLS

DATE: 4-28-2021
 REV:

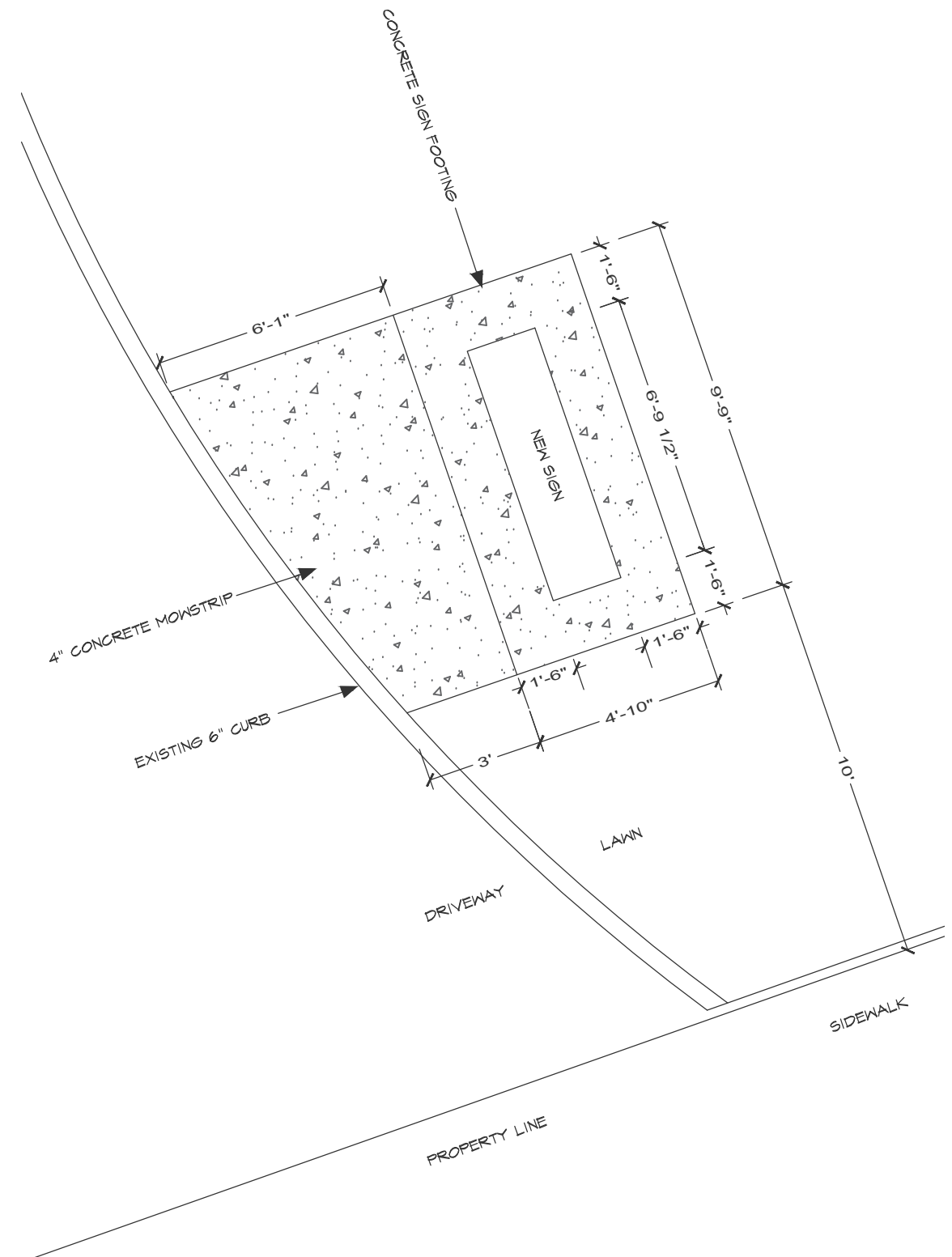
DRAWN BY B. MARTIN

SHEET

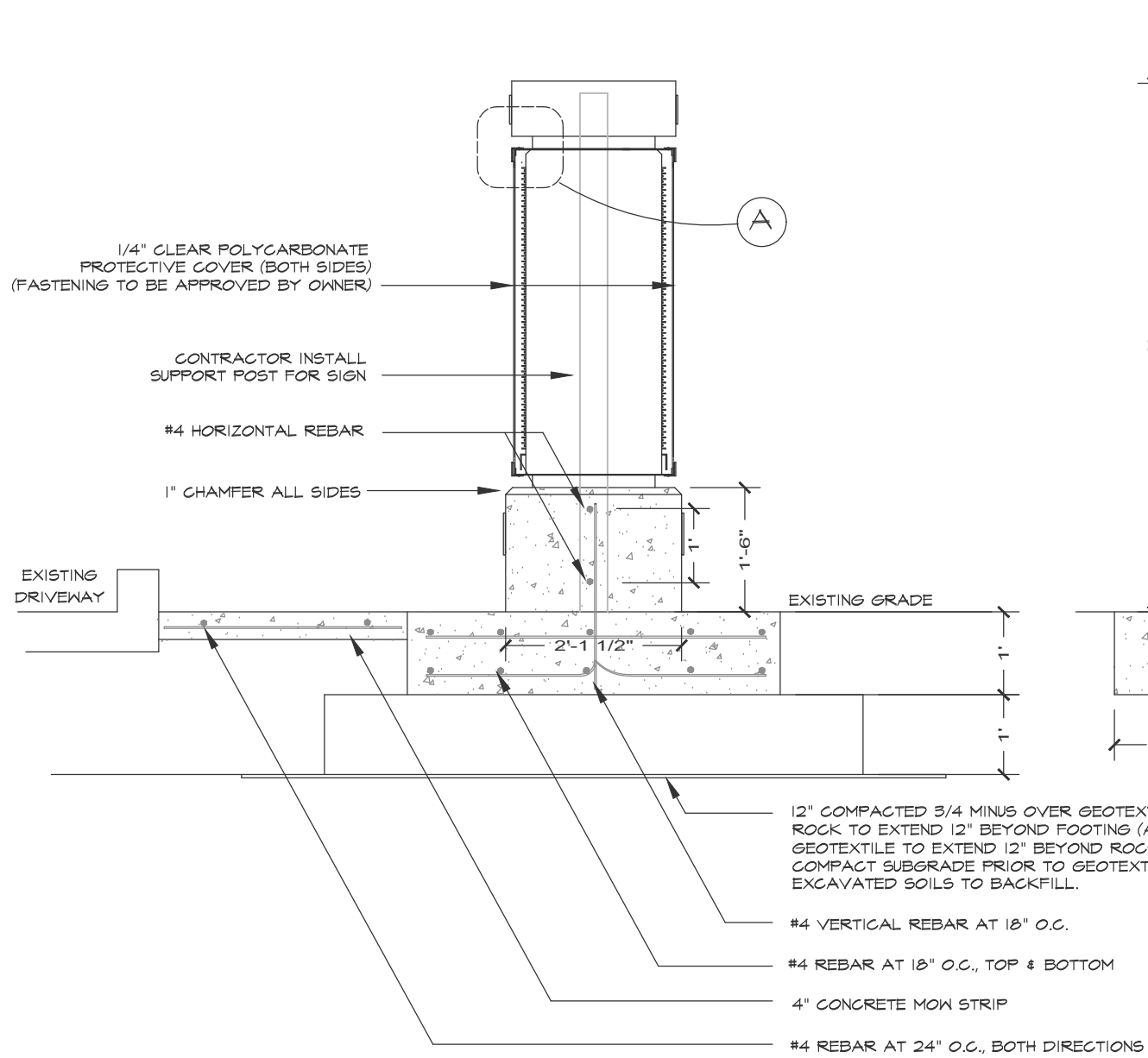
KEN = 1



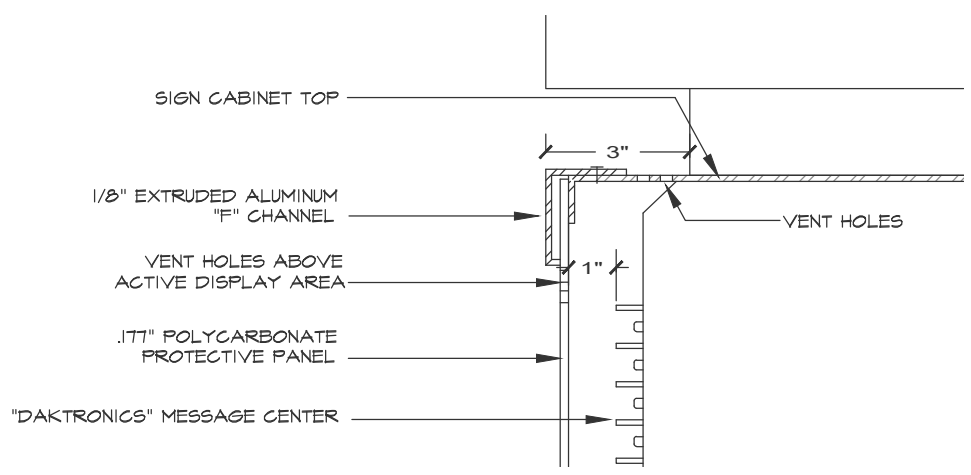
KENNEDY PLAN VIEW
 SCALE: 1" = 80'



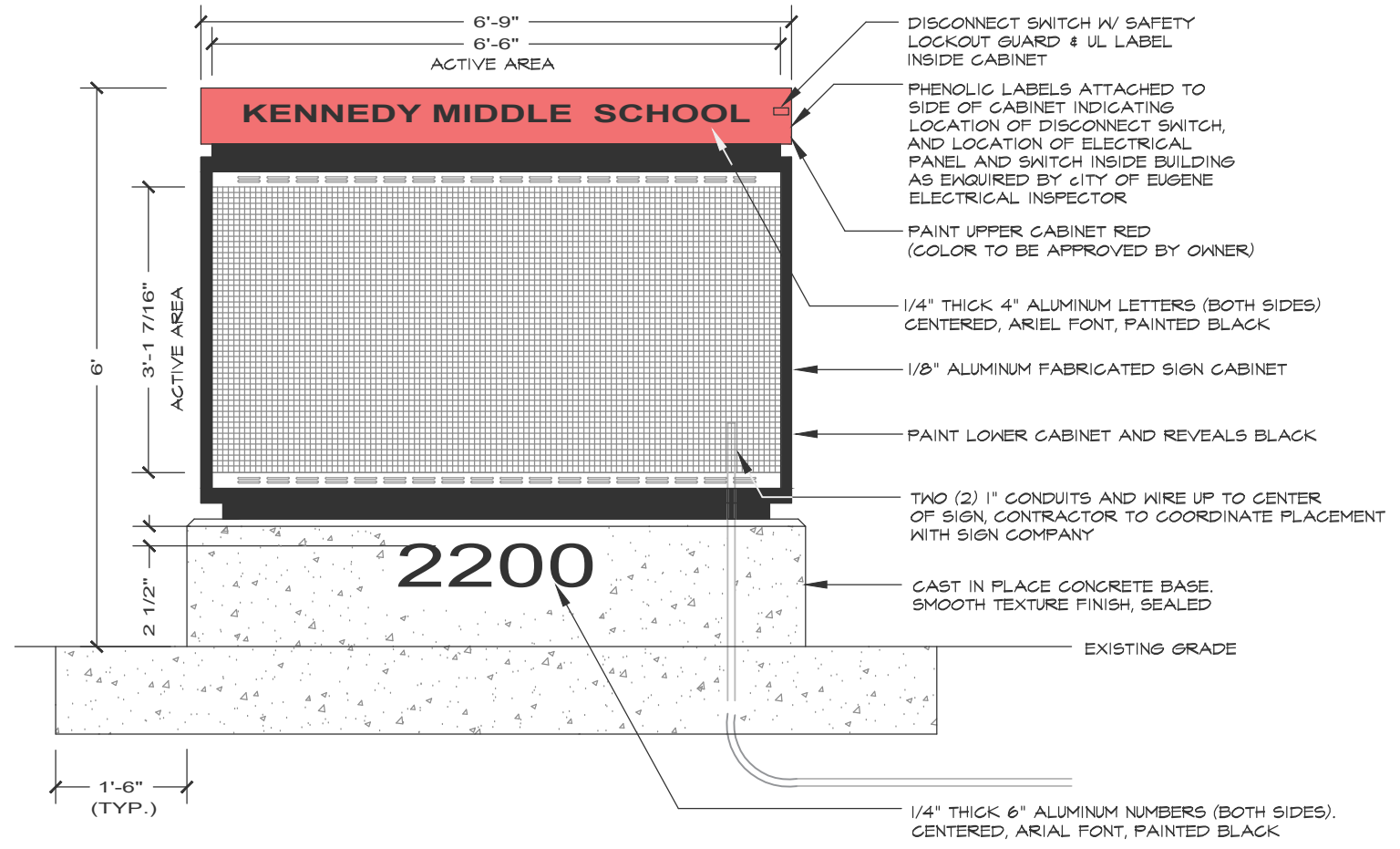
KENNEDY SIGN LOCATION PLAN VIEW
 SCALE: 1/4" = 1'-0"



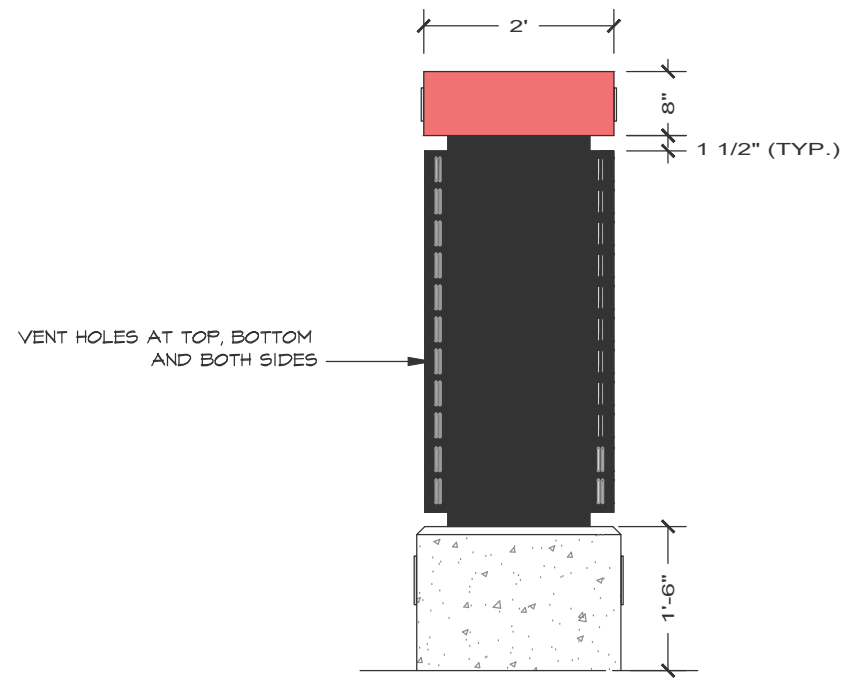
KENNEDY SIGN SECTION
SCALE : 1/2"=1'-0"



(A) KENNEDY SIGN DETAIL (BOTTOM SIMILAR)
SCALE : 3"=1'-0"



KENNEDY SIGN FRONT ELEVATION
SCALE : 1/2"=1'-0"



KENNEDY SIGN SIDE ELEVATION
SCALE : 1/2"=1'-0"



Facilities Management
School District 4J
715 W. 4th Avenue
Eugene, OR 97402
(541) 790-7400

NEW READERBOARDS
KELLY AND KENNEDY MIDDLE SCHOOLS

DATE: 9-28-2021
REV: 11-18-2021

DRAWN BY B. MARTIN

SHEET

KEN=2