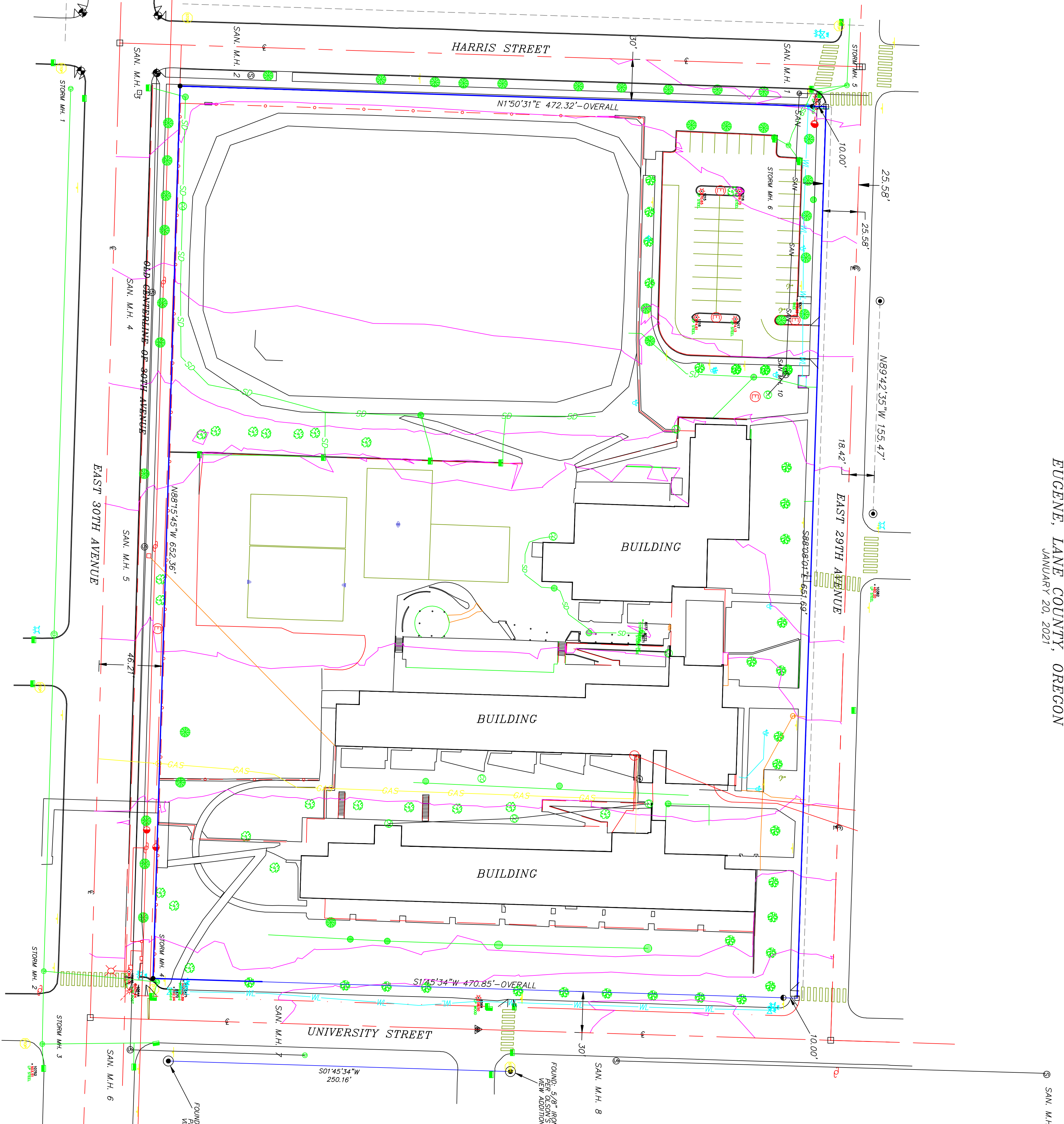


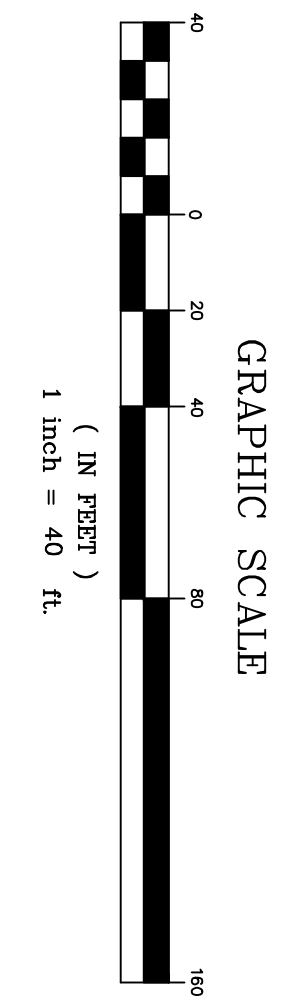
SITE SURVEY AT
CAMAS RIDGE ELEMENTARY SCHOOL
 EUGENE, LANE COUNTY, OREGON
 JANUARY 20, 2021

SAN. MH. 1	RM=464.44'	6"TL IN EAST=461.77'	8"TL IN SOUTH=460.82'	8"TL OUT NORTH=460.77'
SAN. MH. 2	RM=467.64'	10"TL IN NORTH=460.80'	12"TL IN SOUTH=462.72'	12"TL OUT WEST=462.67'
SAN. MH. 3	RM=467.50'	12"TL IN EAST=461.95'	8"TL IN SOUTH=462.18'	8"TL OUT WEST=461.88'
SAN. MH. 4	RM=476.05'	12"TL IN EAST=470.63'	8"TL IN SOUTH=470.63'	8"TL OUT WEST=470.41'
SAN. MH. 5	RM=487.06'	12"TL IN EAST=480.39'	8"TL IN SOUTH=480.54'	8"TL OUT WEST=480.30'
SAN. MH. 6	RM=502.88'	10"TL IN NORTH=498.92'	8"TL IN EAST=498.70'	8"TL OUT WEST=498.56'
SAN. MH. 7	RM=506.06'	6"TL IN NORTH=501.37'	8"TL IN EAST=501.50'	8"TL OUT SOUTH=501.30'
SAN. MH. 8	RM=511.09'	6"TL IN EAST=508.59'	8"TL IN SOUTH=508.09'	8"TL OUT NORTH=508.04'
SAN. MH. 9	RM=507.87'	8"TL IN SOUTH=505.17'	8"TL OUT NORTH=505.12'	
SAN. MH. 10	RM=476.30'	6"TL IN EAST=469.68'	6"TL OUT WEST=469.63'	
STORM MH. 1	RM=469.20'	12"TL IN EAST=460.80'	10"TL IN NORTH=460.80'	12"TL OUT WEST=460.70'
STORM MH. 2	RM=501.34'	12"TL IN EAST=494.69'	12"TL OUT WEST=464.59'	
STORM MH. 3	RM=502.35'	12"TL IN EAST=496.90'	12"TL IN NORTH=486.88'	12"TL OUT WEST=496.80'
STORM MH. 4	RM=502.57'	10"TL IN EAST=498.00'	12"TL IN NORTH=497.65'	12"TL OUT SOUTH=497.60'
STORM MH. 5	RM=464.16'	10"TL IN EAST=459.69'	10"TL IN SE=461.39'	10"TL IN SW=461.29'
STORM MH. 6	RM=468.23'	6"TL IN NE=464.46'	6"TL IN SOUTH=464.43'	10"TL OUT WEST=464.36'



BASIS OF ELEVATION - CITY OF EUGENE BENCHMARK NO. SF06835
 BUCKSHOT AT THE NW CORNER OF KINCAID STREET AND 30TH AVENUE
 ELEVATION = 456.01'

SCALE 1" = 40'



LEGEND

- SANITARY MANHOLE
- ⊙ STORM MANHOLE
- ⊖ STORM CLEAN OUT
- ⊕ WATER VALVE
- ⊗ POWER POLE
- ⊘ DECIDUOUS TREE
- ⊙ SPRINKLER VALVE
- ⊙ LIGHT POLE
- ⊙ BASKETBALL HOOP
- ⊙ ELECTRIC METER
- ⊙ ELECTRIC VAULT
- ⊙ GAS METER
- ⊙ GUY ANCHOR
- ⊙ AREA DRAIN
- ⊙ CATCH BASIN
- ⊙ CORNERS FOUND (AS NOTED)
- CORNER SET - 5/8" REBAR WITH YELLOW PLASTIC CAP "DK. BAKER FLS 1978"
- REFERENCE CORNER SET - 5/8" REBAR WITH RED PLASTIC CAP "REF. MON. PLS 1978"
- CALCULATED POINT (NOT SET)
- ▲ FOUND - "TK NAIL" CITY OF EUGENE CENTERLINE MONUMENT
- ◆ FOUND - 1 1/2" CITY OF EUGENE BRASS DISK-CENTERLINE REFERENCE

OREGON
 JEFF M. BAKER
 DANIEL 1978
 REGISTERED PROFESSIONAL LAND SURVEYOR
 EXPIRES 12/31/21
 THIS SURVEY MAP SHALL BE CONSIDERED PRELIMINARY UNTIL SIGNED BY THE SURVEYOR

SITE SURVEY AT
CAMAS RIDGE ELEMENTARY
1150 EAST 29TH AVENUE
EUGENE, LANE COUNTY, OREGON
EUGENE SCHOOL DISTRICT 4J

CLIENT: EUGENE AND ASSOCIATES, SURVEYORS
 DRAWN BY: SWB
 DATE: 1/20/21
 FILE: CAMAS-900E
 1347 MARKET STREET
 SPRINGFIELD, OREGON 97477 (541) 343-7243