

6 April 2020

**ADDENDUM #3**



**PROJECT:** Kelly Middle School Improvements & North Eugene High School Improvements

**PROJECT NUMBERS:** District CIP# 461.524.003

---

The following deletions and additions are  
hereby made a part of Bidding and Contract Documents, effective this date.

---

**PROJECT MANUAL**

Item

1. Reference Document 00 11 13, Invitation to Bid:

Delete: "Tuesday, April 7, 2020 until the Deadline for Bid Submission at 2:00pm."  
Add: "Tuesday, April 14, 2020 until the Deadline for Bid Submission at 2:00pm."

2. Reference Document 00 11 13, Invitation to Bid, "Each Bid must be submitted on the prescribed form and accompanied by a Surety Bond, Cashier's Check, or Certified Check [...] for those items bid upon.":

Add: "Bonds submitted in the form of Cashier's Checks and Certified Checks must be submitted electronically with the required Bid Documents, as an image of the check, by email to CIP@4j.lane.edu. In addition, original Checks must be sent by mail to the Eugene Facilities Management Office, 715 West Fourth Avenue, Eugene, Oregon 97402. Original checks must be placed in the mail by end of day, Tuesday April 14, 2020."

3. Reference Document 00 41 13, Bid Form, Bid Deadline:

Delete: April 7<sup>th</sup>, 2020.  
Add: April 14<sup>th</sup>, 2020.

**DRAWINGS**

Item

KELLY MIDDLE SCHOOL IMPROVEMENTS

1. Reference Drawing KMS A700 DOOR SCHEDULE:  
Delete: Sheet A700 in entirety.  
Add: Sheet A700 in entirety, with Revision 3, attached.

#### NORTH EUGENE HIGH SCHOOL IMPROVEMENTS

2. Reference Drawing KMS A700 DOOR & FINISH SCHEDULE:  
Delete: Sheet A700 in entirety.  
Add: Sheet A700 in entirety, with Revision 3, attached.

#### **CLARIFICATIONS**

##### Item

1. Bid Submission deadline is now 2:00pm, April 14, 2020. Bids must be received electronically.
2. Finish schedules revised to clarify where existing finishes are expected to remain. Existing conditions noted previously with a dash symbol (-) have been revised to the symbol (E) used elsewhere in the drawings. These revisions have not been clouded. However, miscellaneous changes to the finish schedule that do change extent or type of finish have been identified with revision clouds and the Revision 3 symbol.

#### **PRODUCT APPROVALS**

Add the following to the list of acceptable manufacturers and products as noted: None at this time.

##### *Attachments:*

1. *None*

**END OF ADDENDUM THREE**

Casework ID	Size (LxDxH)	NOTES
SL 2		
A	10'-3" x 1'-3" x 6'-7"	
B	3'-10" x 2'-4" x 6'-8"	
SL 9		
A	3'-9" x 2'-5" x 6'-7"	
B	17'-2" x 1'-6" x 2'-3"	
C	9'-2" x 1'-6" x 2'-3"	
D	8'-0" x 1'-4" x 4'-11"	
E	6'-1" x 1'-4" x 6'-0"	
SL 10		
A1	8'-1" x 2'-6" x 3'-0"	2
A2	8'-1" x 1'-0" x 2'-8"	
B1	8'-1" x 2'-6" x 3'-0"	
B2	8'-1" x 1'-0" x 2'-8"	2
C	17'-2" x 1'-2" x 2'-4"	
D	9'-2" x 1'-2" x 2'-4"	
E	4'-0" x 1'-0" x 4'-9"	
SL 11		
A	3'-9" x 2'-5" x 6'-7"	
B	8'-0" x 1'-0" x 3'-0"	
D	2'-4" x 1'-6" x 6'-0"	
SL 12		
A	3'-9" x 2'-5" x 6'-7"	5
B	7'-8" x 1'-4" x 5'-0"	5
C	7'-2" x 1'-4" x 3'-2"	5
D	7'-0" x 1'-0" x 4'-0"	5
E	17'-0" x 1'-0" x 2'-4"	5
F	7'-0" x 1'-0" x 4'-0"	5
SL 13		
A	7'-9" x 1'-4" x 5'-0"	4
B	7'-9" x 1'-4" x 3'-0"	
C	3'-0" x 1'-4" x 8'-0"	
D	3'-0" x 1'-4" x 8'-0"	
E	3'-9" x 2'-5" x 6'-7"	
F	6'-0" x 1'-0" x 2'-6"	
G	6'-0" x 1'-0" x 2'-6"	
I	7'-10" x 2'-0" x 2'-6"	
J	7'-9" x 1'-4" x 5'-6"	
SL 14		
A	3'-9" x 2'-5" x 6'-7"	2
B	8'-0" x 1'-4" x 3'-3"	
C	8'-0" x 1'-4" x 3'-3"	2
D	8'-0" x 1'-2" x 3'-2"	4
E	8'-0" x 1'-2" x 3'-2"	4
F	2'-6" x 1'-0" x 4'-0"	
G	2'-6" x 1'-0" x 4'-0"	
H	4'-0" x 1'-4" x 6'-9"	
I	8'-0" x 1'-2" x 3'-4"	
J	8'-10" x 1'-0" x 2'-4"	
K	10'-0" x 1'-0" x 2'-4"	4
L	8'-0" x 1'-0" x 3'-4"	6
SL 15		
A	3'-9" x 2'-5" x 6'-7"	
C	7'-0" x 1'-0" x 4'-0"	
D	4'-0" x 1'-0" x 5'-0"	
E	2'-8" x 1'-0" x 5'-0"	
F	12'-0" x 1'-0" x 2'-4"	
G	9'-0" x 1'-0" x 2'-4"	
SL 16		
A	3'-9" x 2'-5" x 6'-7"	2
B	8'-0" x 1'-4" x 3'-4"	
C	8'-0" x 1'-2" x 3'-4"	
D	8'-0" x 1'-4" x 3'-4"	
E	9'-4" x 1'-0" x 2'-4"	
F	8'-0" x 1'-2" x 3'-4"	
SL 17		
A	3'-9" x 2'-5" x 6'-7"	
B	4'-0" x 2'-0" x 6'-9"	
C	4'-0" x 2'-0" x 6'-9"	
E	10'-6" x 1'-3" x 3'-8"	
F	9'-4" x 1'-0" x 2'-4"	
SL 18		
A	3'-9" x 2'-5" x 6'-7"	
C	9'-4" x 1'-0" x 2'-4"	
D	8'-0" x 1'-2" x 3'-4"	
E1	8'-0" x 1'-4" x 6'-0"	
E2	8'-0" x 1'-4" x 2'-1"	
F1	8'-0" x 1'-4" x 6'-0"	
F2	8'-0" x 1'-4" x 2'-1"	

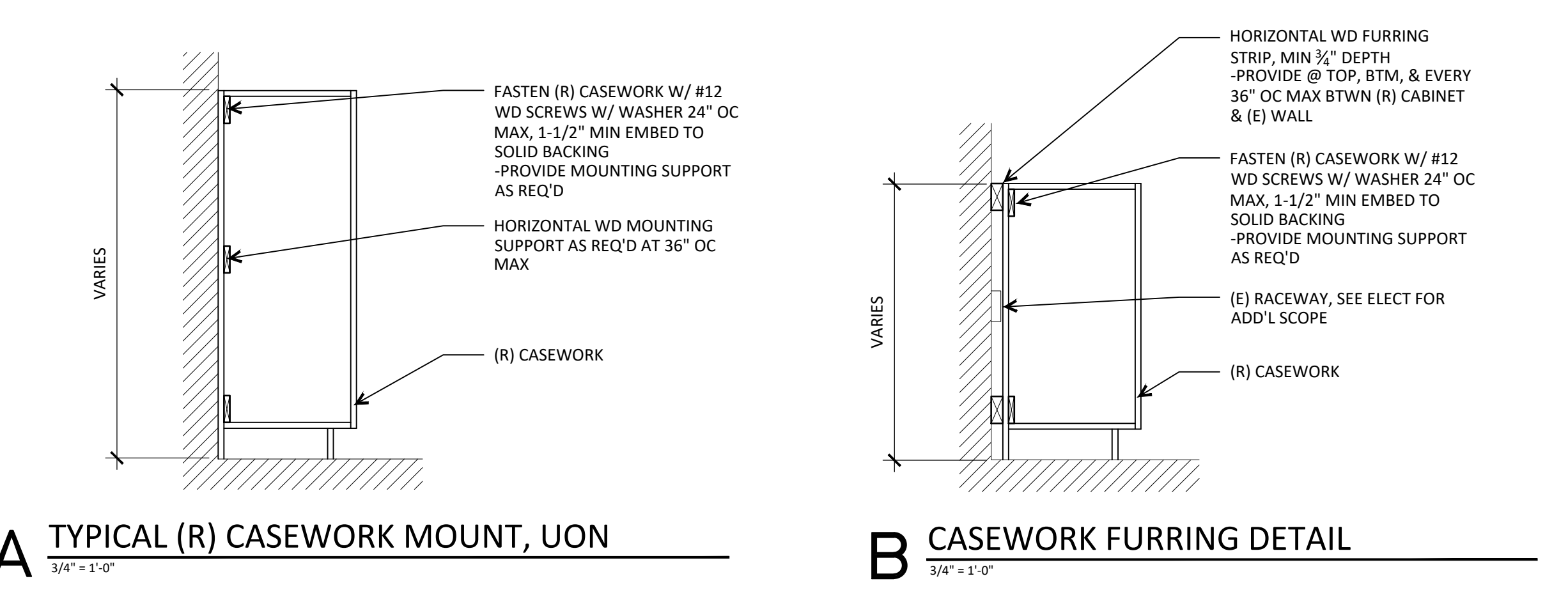
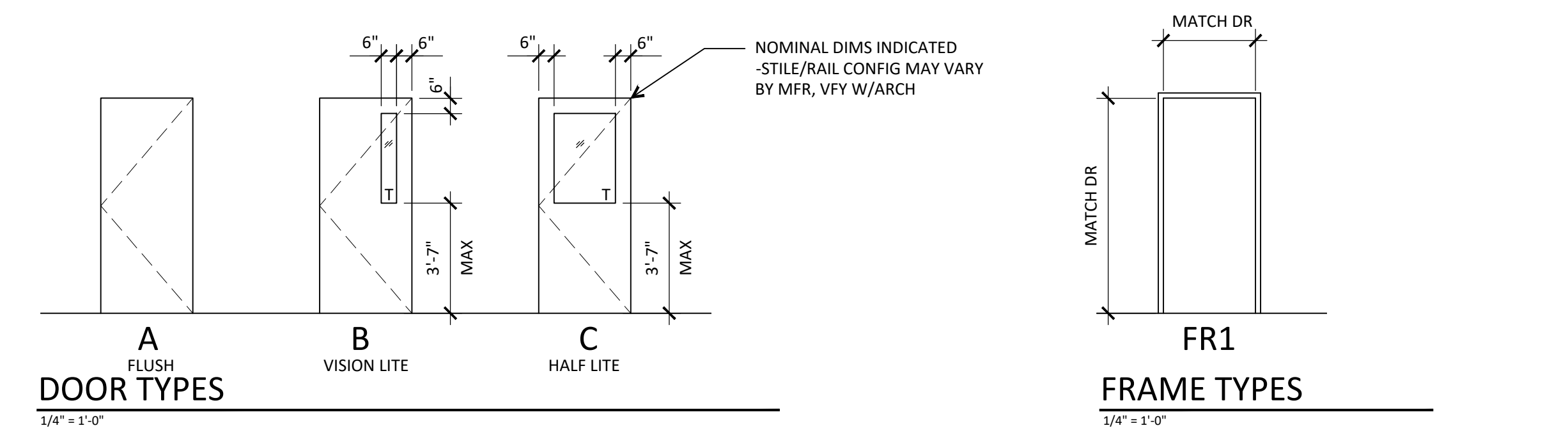
- NOTES:  
1. SEE PLAN FOR CASEWORK DIMENSIONS  
2. UPPER CABINET  
3. NURSE BED  
4. FURR OUT ELECTRICAL DEVICE TO BACK/CABINET  
5. CASEWORK FURRING DETAIL B/A700

**FINISH SCHEDULE ABBREVIATIONS:**  
CPT: CARPETING  
VCT: VINYL COMPOSITION TILE  
RB: RESILIENT BASE  
CT: CERAMIC TILE  
GB: GYPSUM BOARD  
TBB: TILE BACKER BOARD  
PS: PAINT SYSTEM  
ACT: ACOUSTIC CEILING TILE  
FF: FACTORY FINISH  
(E): EXISTING

ROOM NO.	ROOM NAME	FLOOR		WALLS								CEILING		NOTES
		FLOOR	BASE	NORTH		EAST		SOUTH		WEST		MATERIAL	FINISH	
				MATERIAL	FINISH	MATERIAL	FINISH	MATERIAL	FINISH	MATERIAL	FINISH			
RR1	RESTROOM	CT-1	CT-1	GB	PS-3	GB	PS-3	GB	PS-3	GB	PS-3	GB	PS-3	
1	CLASSROOM	(E)	RB-1	GB	PS-2	(E)	PS-2	(E)	PS-2	(E)	PS-2	(E)	PS-2	RB @ (N) WALLS ONLY
2	CLASSROOM	(E)	RB-1	(E)	PS-2	(E)	PS-2	GB	PS-2	(E)	PS-2	(E)	PS-2	RB @ (N) WALLS ONLY
3	CLASSROOM	(E)	(E)	(E)	PS-2	(E)	PS-2	(E)	PS-2	(E)	PS-2	(E)	PS-2	
4	CLASSROOM	VCT-1	RB-1	(E)	PS-2	GB	PS-2	(E)	PS-2	(E)	PS-2	(E)	PS-2	PATCH FLOORING AS REQ'D BY DEMOLITION, RB @ (N) WALLS ONLY
5	CLASSROOM	VCT-1	RB-1	(E)	PS-2	(E)	PS-2	(E)	PS-2	(E)	PS-2	(E)	PS-2	
RR2	RESTROOM	CT-4	CT-4	(E)	PS-3	TBB / GB	CT-1,2,3 / PS-3	(E) / TBB	CT-1,2,3 / PS-3	(E)	PS-3	(E)	PS-3	SEE ELEVATIONS, MATCH EXISTING TILE COLOR MIX
RR3	RESTROOM	CT-4	CT-4	(E)	PS-3	TBB / GB	CT-1,2,3 / PS-3	(E)	PS-3	(E)	PS-3	(E)	PS-3	SEE ELEVATIONS, MATCH EXISTING TILE COLOR MIX
6A	WORK ROOM	(E)	RB-1	GB	PS-2	(E)	PS-2	GB	PS-2	(E)	PS-2	(E)	PS-2	RB @ (N) WALLS ONLY
6	CLASSROOM	(E)	RB-1	(E)	PS-2	(E)	PS-2	GB	PS-2	(E)	PS-2	(E)	PS-2	RB @ (N) WALLS ONLY
7	CLASSROOM	(E)	(E)	(E)	PS-2	(E)	PS-2	(E)	PS-2	(E)	PS-2	(E)	PS-2	
RR4	RESTROOM	CT-4	CT-4	GB	PS-3	GB	PS-3	GB	PS-3	GB	PS-3	GB	PS-3	
RR5	RESTROOM	(E)	(E)	(E)	(E)	TBB/GB	CT-1,2,3 / PS-3	(E)	(E)	(E)	(E)	(E)	(E)	PATCH WALLS AS REQ'D BY DEMOLITION, MATCH EXISTING TILE COLOR MIX
8	LIBRARY	CPT-1	RB-1	(E)	PS-2	GB	PS-3	GB	PS-2	GB	PS-2	GB	PS-2	
9A	CLASSROOM	(E)	RB-1	GB	PS-2	(E)	PS-2	GB	PS-2	GB	PS-2	GB	PS-2	PATCH FLOORING, CEILING, & WALLS AS REQ'D BY DEMOLITION, RB @ (N) WALL ONLY
9	CLASSROOM	(E)	RB-1	(E)	PS-2	(E)	PS-2	GB	PS-2	(E)	PS-2	(E)	PS-2	RB @ (N) WALLS ONLY
10	CLASSROOM	(E)	(E)	(E)	PS-2	(E)	PS-2	(E)	PS-2	(E)	PS-2	(E)	PS-2	
11	CLASSROOM	(E)	(E)	(E)	PS-2	(E)	PS-2	(E)	PS-2	(E)	PS-2	(E)	PS-2	
12	CLASSROOM	(E)	(E)	(E)	PS-2	(E)	PS-2	(E)	PS-2	(E)	PS-2	(E)	PS-2	
13	CLASSROOM	(E)	(E)	(E)	PS-2	(E)	PS-2	(E)	PS-2	(E)	PS-2	(E)	PS-2	
14	CLASSROOM	(E)	(E)	(E)	PS-2	(E)	PS-2	(E)	PS-2	(E)	PS-2	(E)	PS-2	
LIB	LIBRARY	(E)	RB-1	(E)	(E)	(E)	(E)	GB	PS-2	GB	PS-2	(E)	(E)	PATCH FLOORING AS REQ'D BY DEMOLITION, RB @ (N) WALL ONLY
LIBA	OFFICE	(E)	RB-1	GB	PS-2	(E)	PS-2	(E)	PS-2	(E)	PS-2	(E)	PS-2	RB @ (N) WALLS ONLY
LIBB	OFFICE	(E)	RB-1	GB	PS-2	(E)	PS-2	(E)	PS-2	(E)	PS-2	(E)	PS-2	RB @ (N) WALLS ONLY
TECH	OFFICE	(E)	RB-1	GB	PS-2	(E)	PS-2	(E)	PS-2	GB	PS-2	ACT-1	FF	PATCH ACT-1 AS REQ'D BY LIGHT FIXTURE & DIFFUSER RELOCATION, RB @ (N) WALL ONLY
19	CLASSROOM	CPT-1	RB-1	(E)	PS-2	GB	PS-2	(E)	PS-2	(E)	PS-2	(E)	(E)	
19A	CLASSROOM	CPT-1	RB-1	(E)	PS-2	(E)	PS-2	(E)	PS-2	GB	PS-2	(E)	(E)	
35	CLASSROOM	(E)	RB-1	(E)	PS-2	(E)	PS-2	GB	PS-2	(E)	PS-2	(E)	(E)	RB @ (N) WALLS ONLY
RR8	RESTROOM	(E)	RB-1	(E)	PS-3	(E)	PS-3	GB	PS-3	GB	PS-3	(E)	(E)	RB @ (N) WALLS ONLY
LKR2	LOCKER ROOM	(E)	RB-1	GB	PS-3	GB	PS-3	(E)	PS-3	(E)	PS-3	(E)	(E)	RB @ (N) WALLS ONLY
H1	HALL	(E)	(E)	(E)	(E)	GB	PS-2	(E)	(E)	(E)	(E)	(E)	(E)	FINISH SCOPE @ NEW WALL ASSY
H2	HALL	(E)	(E)	GB	PS-2	(E)	(E)	(E)	(E)	(E)	(E)	(E)	(E)	FINISH SCOPE @ NEW WALL ASSY
H2A	HALL	CPT-1	RB-1	GB	PS-2	GB	PS-2	GB	PS-2	GB	PS-2	GB	PS-2	

Casework ID	Size (LxDxH)	NOTES
SL P.1		
A	8'-0" x 1'-2" x 3'-4"	
B	3'-5" x 2'-9" x 2'-9"	
C	15'-11" x 1'-6" x 2'-6"	
D	5'-0" x 1'-0" x 4'-0"	
SL P.2		
A	8'-0" x 1'-2" x 3'-4"	
B	3'-3" x 2'-5" x 6'-2"	
C	3'-5" x 2'-9" x 2'-9"	
SL P.4		
A	8'-0" x 10" x 2'-8"	
C	12'-0" x 1'-0" x 3'-0"	
D	8'-0" x 2'-0" x 4'-4"	
E	8'-0" x 2'-0" x 4'-4"	
F	8'-0" x 2'-0" x 4'-4"	
G	8'-0" x 2'-0" x 4'-4"	
I	8'-0" x 2'-0" x 4'-4"	
J	4'-0" x 2'-0" x 4'-4"	
K	4'-0" x 2'-0" x 4'-4"	
M	8'-0" x 1'-1" x 4'-4"	4
M1	8'-0" x 1'-1" x 2'-0"	2
N	8'-0" x 1'-1" x 4'-4"	
N1	8'-0" x 1'-1" x 2'-0"	2
O	8'-0" x 1'-1" x 4'-4"	
O1	8'-0" x 1'-1" x 2'-0"	2
P	3'-6" x 1'-1" x 4'-4"	
P1	8'-0" x 1'-1" x 2'-0"	2
Q	4'-1" x 1'-4" x 7'-1"	4
R	SEE PLAN	4
S	4'-0" x 2'-1" x 7'-3"	
T	5'-1" x 1'-1" x 2'-8"	
U	6'-0" x 1'-1" x 2'-8"	4

MARK	DOOR			FRAME			FIRE RATING	HARDWARE SET	COMMENTS			
	SIZE			DOOR TYPE	MATERIAL	FINISH				FRAME TYPE	MATERIAL	FINISH
	WIDTH	HEIGHT	THICKNESS									
N1A	3'-0"	7'-0"	1-3/4"	C	SCWD	FF	FR1	HM	PS	2		
NRR1A	3'-0"	7'-0"	1-3/4"	A	SCWD	FF	FR1	HM	PS	1		
N4A	3'-0"	6'-8"	1-3/4"	C	SCWD	FF	FR1	HM	PS	2		
NRR4A	3'-0"	7'-0"	1-3/4"	A	SCWD	FF	FR1	HM	PS	4		
N6A	3'-0"	6'-8"	1-3/4"	C	SCWD	FF	FR1	HM	PS	2		
N8A	3'-0"	7'-0"	1-3/4"	C	SCWD	FF	FR1	HM	PS	2		
N9A	3'-0"	7'-0"	1-3/4"	C	SCWD	FF	FR1	HM	PS	2		
N9AA	3'-0"	7'-0"	1-3/4"	C	SCWD	FF	FR1	HM	PS	2		
NTECHA	3'-0"	7'-0"	1-3/4"	B	SCWD	FF	FR1	HM	PS	3		
NLIBBA	3'-0"	7'-0"	1-3/4"	C	SCWD	FF	FR1	HM	PS	3		
NLIBBA	3'-0"	7'-0"	1-3/4"	C	SCWD	FF	FR1	HM	PS	3		
NLKR1A	3'-0"	7'-0"	1-3/4"	C	SCWD	FF	FR1	HM	PS	4A		
NRR8A	3'-0"	7'-0"	1-3/4"	A	SCWD	FF	FR1	HM	PS	4		
ERR5A	E	E	E	E	E	E	E	E	E	5		
N35A	3'-0"	7'-0"	1-3/4"	C	SCWD	FF	FR1	HM	PS	3		
NH1	-	-	-	-	-	-	FR1	HM	PS	-	HM CASED OPENING, VFY DIMS	



**GMA ARCHITECTS**  
860 West Park Street / Ste 300  
Eugene / Oregon / 97401  
p 541.344.9157  
gma-arch.com



- REVISIONS**
- 3/17/2020 ADD. 1
  - 3/27/2020 ADD. 2
  - 4/6/2020 ADD. 3

**ESD 4J KELLY MIDDLE SCHOOL IMPROVEMENTS**  
850 HOWARD AVE, EUGENE OR 97404  
CONSTRUCTION DOCUMENTS

JOB NO: 19189  
ISSUE DATE: 3/3/2020

DOOR SCHEDULE

**KMS**  
**A700**

Casework ID	Size (LxDxH)	Notes
SL1	A 10'-3" x 1'-3" x 6'-7"	5
	B 3'-9" x 2'-5" x 6'-7"	4
	C 6'-6" x 1'-0" x 2'-3"	5
	D 6'-6" x 1'-0" x 2'-3"	5
	E 8'-0" x 1'-0" x 2'-3"	5
	F 6'-0" x 1'-0" x 2'-2"	5
SL3	C 11'-9" x 1'-0" x 2'-6"	5
SL4	A 10'-3" x 1'-3" x 6'-7"	5
	B 3'-10" x 2'-4" x 6'-9"	5
	C 12'-0" x 2'-0" x 4'-6"	5
	D 4'-0" x 1'-0" x 5'-0"	5
SL6	A 10'-3" x 1'-3" x 6'-7"	5
	B 3'-10" x 2'-3" x 6'-7"	4
	C 4'-0" x 1'-0" x 2'-2"	5
	D 7'-0" x 1'-0" x 2'-2"	5
	E 6'-0" x 1'-0" x 2'-2"	5
	F 4'-1" x 1'-0" x 2'-2"	5
SL7	A 10'-3" x 1'-3" x 6'-7"	5
	B 3'-10" x 2'-4" x 6'-9"	5
	C 6'-0" x 1'-8" x 6'-8"	5
	D 16'-3" x 1'-7" x 2'-4"	5
	E 8'-0" x 1'-0" x 2'-4"	5
SL8	B 3'-9" x 2'-5" x 6'-7"	5
	C 10'-6" x 1'-1" x 2'-3"	5
	D 8'-6" x 1'-1" x 2'-3"	5
	E 2'-0" x 1'-2" x 3'-11"	5
	SL19	A1 2'-10" x 1'-5" x 6'-0"
A 5'-10" x 1'-5" x 5'-9"		5
C 8'-0" x 1'-2" x 3'-4"		5
SL20	A1 2'-10" x 1'-5" x 6'-0"	5
	A 5'-10" x 1'-5" x 5'-9"	5
	C 8'-0" x 1'-2" x 3'-4"	5
	D 3'-0" x 1'-0" x 5'-6"	5
	E 8'-0" x 1'-4" x 3'-0"	5
	F 4'-0" x 1'-0" x 6'-7"	5
SL21	D 8'-0" x 1'-0" x 2'-4"	5
SLA	A 5'-0" x 14" x 7'-0"	
SLB	A 11'-8" x 1'-2" x 2'-5"	4
SLD	A 4'-8" x 1'-4" x 2'-0"	2
	B 6'-5" x 2'-6" x 1'-11"	3
	C 9'-2" x 1'-4" x 2'-7"	2
SLE	A 8'-2" x 2'-5" x 3'-4"	5
	C 3'-0" x 1'-0" x 6'-6"	5
	D (2X) 4'-0" x 2'-0" x 6'-6"	
	E (2X) 4'-0" x 2'-0" x 6'-6"	
	F (2X) 4'-0" x 2'-0" x 6'-6"	
	G 7'-6" x 2'-7" x 5'-7"	
	H 4'-0" x 2'-0" x 6'-6"	
	I 10'-0" x 1'-1" x 2'-4"	2
	J 4'-8" x 1'-5" x 2'-0"	2
	SLF	A 2'-6" x 2'-6" x 6'-8"
B 27'-0" x 1'-0" x 4'-6"		
C 8'-6" x 1'-0" x 2'-5"		5
D 16'-7" x 1'-0" x 2'-5"		
E 3'-0" x 2'-0" x 3'-6"		
F 16'-0" x 1'-0" x 4'-6"		
G 5'-0" x 2'-1" x 6'-8"		
H 10'-0" x 2'-0" x 4'-7"		
I 8'-1" x 2'-0" x 4'-6"		
SLKSHOP	A 15'-8" x 2'-3" x 2'-7"	4
	B 8'-1" x 1'-4" x 6'-3"	4

- NOTES:  
1. SEE PLAN FOR CASEWORK DIMENSIONS  
2. UPPER CABINET  
3. NURSE BED  
4. FURR OUT ELECTRICAL DEVICE TO BACK/CABINET  
5. CASEWORK FURRING DETAIL B/A700

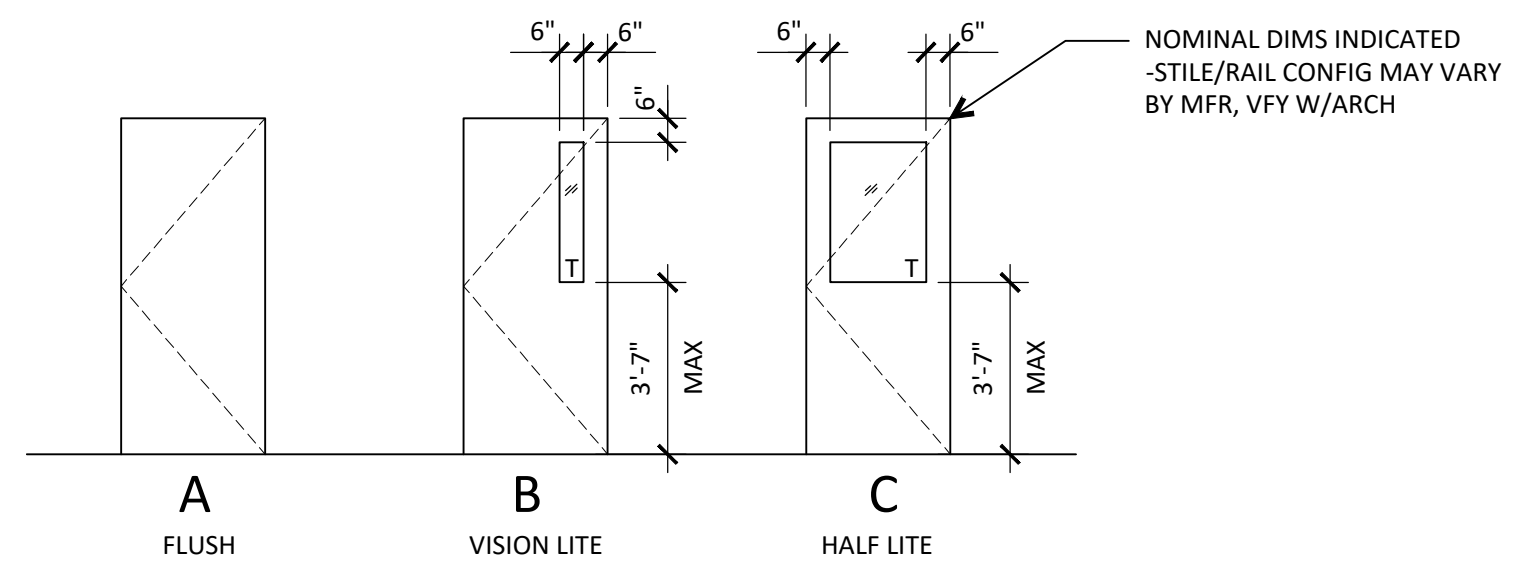
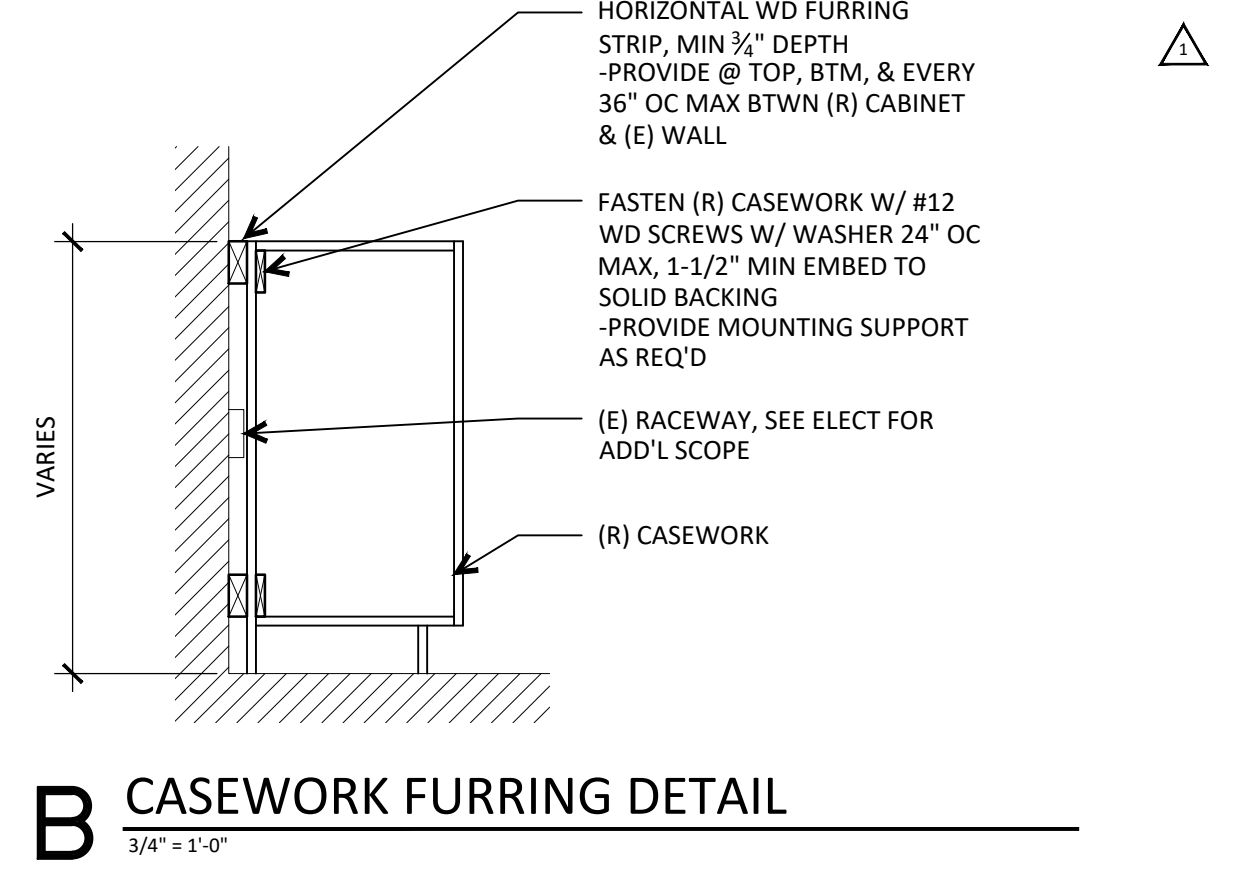
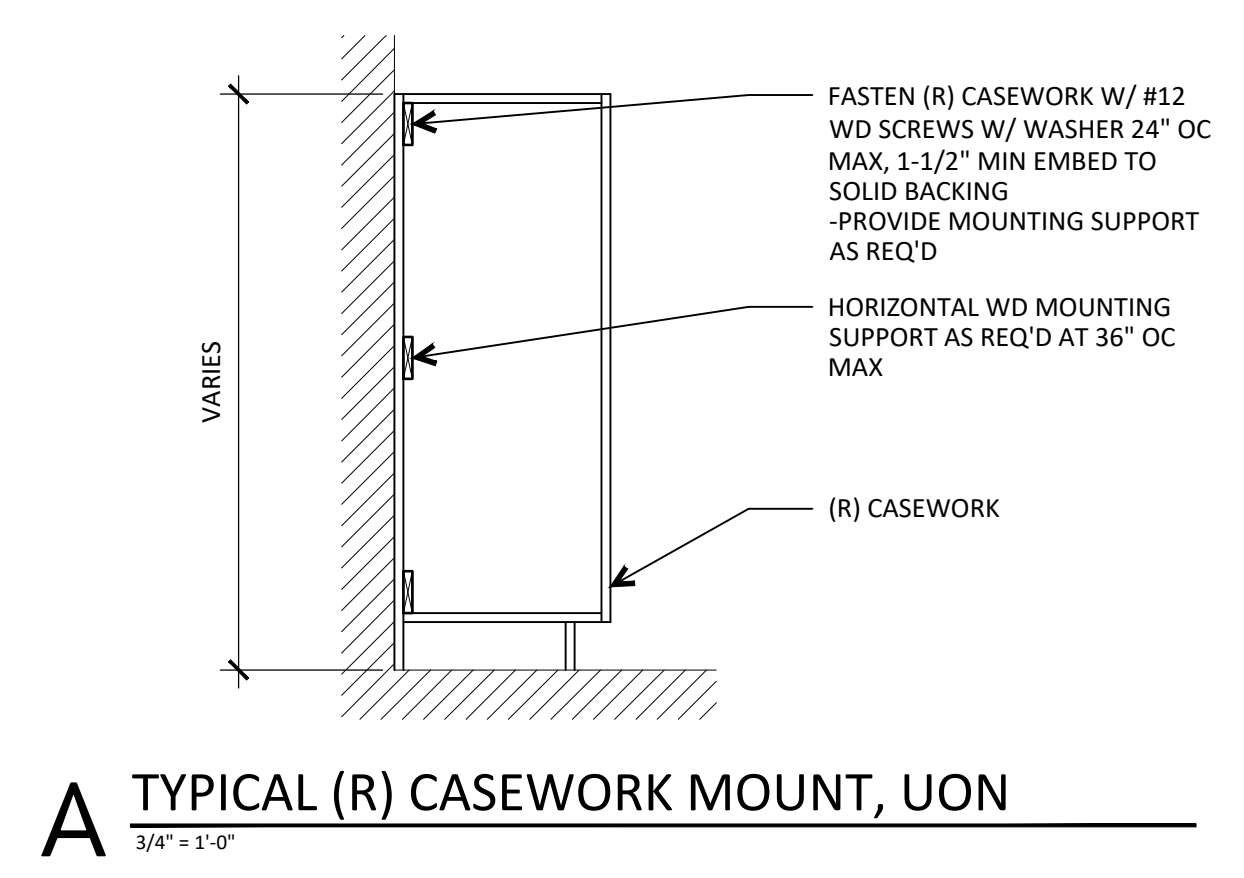
MARK	DOOR SCHEDULE											COMMENTS
	DOOR			FRAME				FIRE RATING	HARDWARE SET			
	WIDTH	HEIGHT	THICKNESS	DOOR TYPE	MATERIAL	FINISH	FRAME TYPE					
N206A	3'-0"	7'-0"	1-3/4"	B	SCWD	FF	FR1	HM	PS	1-1/2 HR	2	
N209GA	3'-0"	7'-0"	1-3/4"	B	SCWD	FF	FR1	HM	PS	1-1/2 HR	2	
E302A	E	E	E	E	E	E	E	E	E		5	Prep exterior side/door for new trim
E304A	E	E	E	E	E	E	E	E	E		6	
E305A	E	E	E	E	E	E	E	E	E		4	
N305A	3'-0"	7'-0"	1-3/4"	C	SCWD	FF	FR1	HM	PS		3	
N305B	3'-0"	7'-0"	1-3/4"	C	SCWD	FF	FR1	HM	PS		3	
N600A	3'-0"	7'-0"	1-3/4"	C	SCWD	FF	FR1	HM	PS		1	1/4" tempered glazing, insulated
N600AA	3'-0"	7'-0"	1-3/4"	C	SCWD	FF	FR1	HM	PS		1	1/4" tempered glazing, insulated



**FINISH SCHEDULE ABBREVIATIONS:**  
CPT: CARPETING  
VCT: VINYL COMPOSITION TILE  
RB: RESILIENT BASE  
CT: CERAMIC TILE  
GB: GYPSUM BOARD  
TBB: TILE BACKER BOARD  
PS: PAINT SYSTEM  
ACT: ACOUSTIC CEILING TILE  
FF: FACTORY FINISH  
(E): EXISTING

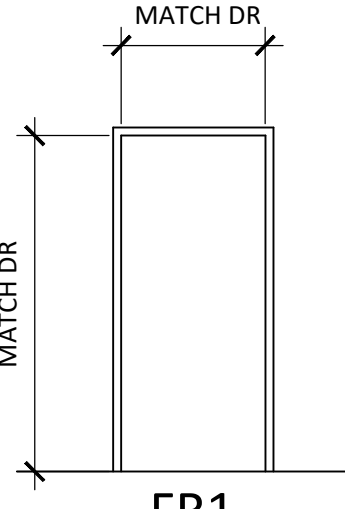
ROOM NO.	ROOM NAME	FLOOR		WALLS								CEILING		NOTES						
		FLOOR	BASE	NORTH		EAST		SOUTH		WEST		MATERIAL	FINISH							
		(E)	(E)	MATERIAL	FINISH	MATERIAL	FINISH	MATERIAL	FINISH	MATERIAL	FINISH	MATERIAL	FINISH							
134	CLASSROOM	(E)	(E)	(E)	PS-2	(E)	PS-2	(E)	PS-2	(E)	PS-2	(E)	PS-2	(E)	PS-2	(E)	ACT-3	FF	1. 2.	
206J	CLASSROOM	(E)	(E)	(E)	(E)	GB	PS-2	(E)	(E)	GB	PS-2	(E)	(E)	(E)	(E)	(E)	(E)	(E)	3.	
209G	CLASSROOM	CPT-1	RB-1	GB	PS-2	(E)	(E)	(E)	(E)	GB	PS-2	(E)	(E)	(E)	(E)	(E)	ACT-1	FF	3.	
209H	LIBRARY	(E)	(E)	(E)	(E)	(E)	(E)	(E)	(E)	(E)	(E)	(E)	(E)	(E)	(E)	(E)	(E)	(E)	3.	
RR1	RESTROOM	(E)	(E)	(E)	PS-3	(E)	PS-3	(E)	PS-3	(E)	PS-3	(E)	PS-3	(E)	PS-3	(E)	(E)	(E)		
RR2	RESTROOM	(E)	(E)	(E)	PS-3	(E)	PS-3	(E)	PS-3	(E)	PS-3	(E)	PS-3	(E)	PS-3	(E)	(E)	(E)		
303	IMC	(E)	(E)	(E)	PS-2	(E)	PS-2	(E)	PS-2	(E)	PS-2	(E)	PS-2	(E)	PS-2	(E)	(E)	(E)		
RR3	RESTROOM	(E)	(E)	(E)	PS-3	(E)	PS-3	(E)	PS-3	(E)	PS-3	(E)	PS-3	(E)	PS-3	(E)	(E)	(E)		
RR4	RESTROOM	(E)	(E)	(E)	PS-3	(E)	PS-3	(E)	PS-3	(E)	PS-3	(E)	PS-3	(E)	PS-3	(E)	(E)	(E)		
305	MAIN OFFICE	(E)	RB-1	(E)	PS-2	(E)	PS-2	(E)	PS-2	(E)	PS-2	(E)	PS-2	(E)	PS-2	(E)	(E)	(E)	3.	
305A	PRINCIPAL	(E)	RB-1	GB	PS-2	GB	PS-2	(E)	PS-2	(E)	PS-2	GB	PS-2	(E)	PS-2	(E)	(E)	(E)	3.	
305B	OFFICE	(E)	RB-1	GB	PS-2	GB	PS-2	(E)	PS-2	(E)	PS-2	GB	PS-2	(E)	PS-2	(E)	(E)	(E)	3.	
305C	NURSE STATION	(E)	RB-1	GB	PS-2	GB	PS-2	(E)	PS-2	(E)	PS-2	(E)	PS-2	(E)	PS-2	(E)	ACT-1	FF	3.	
307A	SPEECH	(E)	RB-1	GB	PS-2	(E)	PS-2	(E)	PS-2	(E)	PS-2	(E)	PS-2	(E)	PS-2	(E)	(E)	(E)	3.	
307	CLASSROOM	(E)	(E)	(E)	PS-2	(E)	PS-2	(E)	PS-2	(E)	PS-2	(E)	PS-2	(E)	PS-2	(E)	(E)	(E)		
308	CLASSROOM	(E)	(E)	(E)	PS-2	(E)	PS-2	(E)	PS-2	(E)	PS-2	(E)	PS-2	(E)	PS-2	(E)	(E)	(E)		
309	CLASSROOM	(E)	(E)	(E)	PS-2	(E)	PS-2	(E)	PS-2	(E)	PS-2	(E)	PS-2	(E)	PS-2	(E)	(E)	(E)		
310	CLASSROOM	(E)	(E)	(E)	PS-2	(E)	PS-2	(E)	PS-2	(E)	PS-2	(E)	PS-2	(E)	PS-2	(E)	(E)	(E)		
311	CLASSROOM	(E)	(E)	(E)	PS-2	(E)	PS-2	(E)	PS-2	(E)	PS-2	(E)	PS-2	(E)	PS-2	(E)	(E)	(E)		
312	CLASSROOM	(E)	(E)	(E)	PS-2	(E)	PS-2	(E)	PS-2	(E)	PS-2	(E)	PS-2	(E)	PS-2	(E)	(E)	(E)		
313	CLASSROOM	(E)	(E)	(E)	PS-2	(E)	PS-2	(E)	PS-2	(E)	PS-2	(E)	PS-2	(E)	PS-2	(E)	(E)	(E)		
314	CLASSROOM	(E)	(E)	(E)	PS-2	(E)	PS-2	(E)	PS-2	(E)	PS-2	(E)	PS-2	(E)	PS-2	(E)	(E)	(E)		
315A	LIBRARY	(E)	RB-1	(E)	PS-2	(E)	PS-2	GB	PS-2	(E)	PS-2	(E)	PS-2	(E)	PS-2	(E)	(E)	(E)	3.	
315B	MUSIC	CPT-1	RB-1	GB	PS-2	(E)	PS-2	(E)	PS-2	(E)	PS-2	(E)	PS-2	(E)	PS-2	(E)	(E)	(E)		
315D	OFFICE	(E)	(E)	(E)	PS-2	(E)	PS-2	(E)	PS-2	(E)	PS-2	(E)	PS-2	(E)	PS-2	(E)	(E)	(E)		
600	CLASSROOM	(E)	RB-1	GB	PS-2	GB	PS-2	GB	PS-2	GB	PS-2	GB	PS-2	GB	PS-2	GB	PS-2	ACT-1	FF	
600A	CLASSROOM	(E)	RB-1	GB	PS-2	GB	PS-2	GB	PS-2	GB	PS-2	GB	PS-2	GB	PS-2	GB	PS-2	ACT-1	FF	

- NOTES:  
1. PATCH FLG TILE ASSY WHERE DEMOLITION OCCURS  
2. PATCH FLOORING AND BASE WHERE DEMOLITION OCCURS  
3. RESILIENT BASE @ NEW WALL ASSEMBLIES ONLY



DOOR TYPES

1/4" = 1'-0"



FR1 FRAME TYPES

1/4" = 1'-0"



REVISIONS		
△	3/17/2020	ADD. 1
△	4/6/2020	ADD. 3

**ESD 4J NORTH EUGENE HIGH SCHOOL IMPROVEMENTS**  
**200 SILVER LN, EUGENE OR**  
**RENOVATIONS**

JOB NO: 19188  
ISSUE DATE: 03 MAR 2020

DOOR & FINISH SCHEDULE

**A700**

**NEHS**