

GENERAL NOTES

SHEET INDEX

A0.1	TITLE SHEET
ARCHITECTURAL DRAWINGS	
A1.1	ARCHITECTURAL SITE PLAN
A4.1	ROOF PLAN
A5.1	SECTION
A7.1	DETAILS
A12.2	REFLECTED CEILING PLAN
STRUCTURAL DRAWINGS	
--	--
ELECTRICAL DRAWINGS	
--	--
MECHANICAL DRAWING	
--	--
PLUMBING DRAWING	
--	--

PROJECT DATA

ZONING CLASSIFICATION : **FL**
 TAX MAP NO. : **18-03-05-22**
 LOT : **06000**
 OCCUPANCY : **E**
 BUILDING TYPE : **V-B**
 O.S.S.C EDITION: **2014**

PROJECT TEAM

ARCHITECTURAL CONSULTANT
RODD HANSEN, ARCHITECT, LLC
 ARCHITECTURE AND PLANNING
 1551 OAK STREET SUITE A
 EUGENE, OREGON 97401
 PHONE: (541) 687-1800
 FAX: (541) 687-1200
 e-mail: rodd@rharchitectural.com

DISTRICT REPRESENTATIVE
4J SCHOOL DISTRICT
 CONTACT: KIRK GEBB
 715 WEST 4TH AVENUE
 EUGENE, OREGON 97402-5024
 PHONE: (541) 790-1431
 CELL: (541) 968-0950
 FAX: (541) 790-1420
 e-mail: gebb@4j.lane.edu

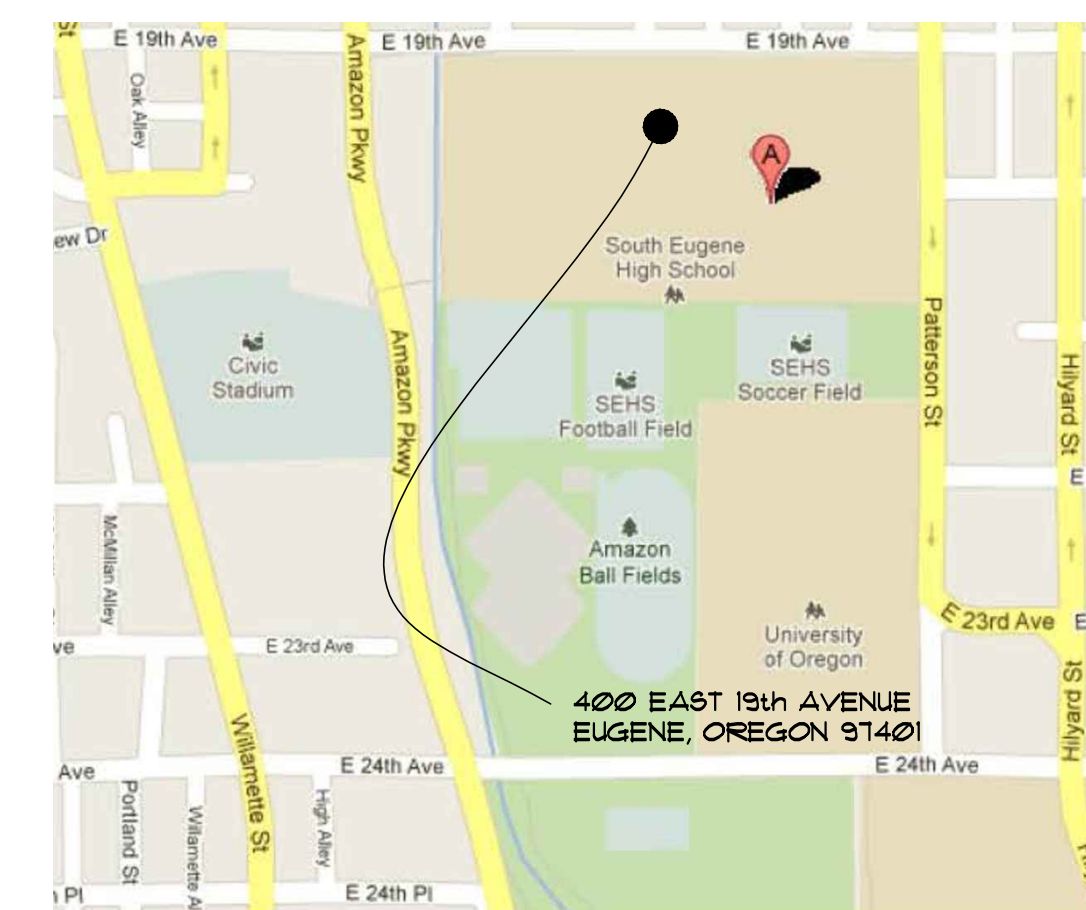
ARCHITECTURAL SYMBOLS

	COLUMN GRID NOTATION		SAND		DETAIL *		SOUND / THERMAL BATT INSULATION
	MATCH SIDE BREAK - MATCH LINE		GRAVEL		SECTION *		RIGID INSULATION
	ELEVATION DATUM		CONCRETE		NORTH ARROW		
	DATUM POINT		GENERAL MASONRY		REFERENCE ARROW		
	ROOM NAME		UNDISTURBED SOIL		VIEW *		
	ROOM NUMBER		WOOD		DIRECTION OF VIEW		
	SLOPE TAG		STEEL		EXISTING WALL		
	KEY NOTE		REVISION TAG		DEMO WALL		
	WINDOW TAG		REVISION CLOUD		NEW WALL		
	DOOR TAG						

ARCHITECTURAL ABBREVIATIONS

AC.	ACOUST.	ACOUSTICAL	FFRF.	FIREPROOF	FRCST.	PRE-CAST
A/C	AIR COND.	AIR CONDITIONING	F.R.	FIRE RETARDANT	FL.	PLATE
AD.	ADJUSTABLE	AREA DRAIN	F.S.	FULL SIZE	FLAM.	PLASTIC LAMINATE
AGGR.	AGGREGATE	ASBESTOS	FT.	FOOT OR FEET	FLAS.	PLASTER
AL.	ALUMINUM	ASPH.	FTG.	FOOTING	FLYUD.	PLYWOOD
ALT.	ALTERNATE	ASPH.	FURR.	FURRING	FR.	FAIR
APPROX.	APPROXIMATE	ASPH.	FUT.	FUTURE	PT.	POINT
ARCH.	ARCHITECTURAL	ASPH.	F.P.	FOUNDATION VENT	P.T.D.	PAPER TOWEL DISPENSER
ASB.	ASBESTOS	ASPH.	G.A.	GAUGE	P.T.D./R.	PAPER TOWEL DISPENSER/RECEPTACLE
ASPH.	ASPHALT	ASPH.	GALV.	GALVANIZED	PTN.	PARTITION
A.B.	ANCHOR BOLT	ASPH.	GAL.	GALLON	P.T.R.	PAPER TOWEL RECEPTACLE
A.H.	AIR HANDLER	ASPH.	G.B.	GRAB BAR	P.T.	PRESSURE TREATED (WOLMINIZED)
A.S.U.	AIR SUPPLY UNIT	ASPH.	G.F.I.	GROUND FAULT INTERRUPTOR	Q.T.	QUARRY TILE
ANOD.	ANODIZED	ASPH.	G.L.	GLASS	R.	RISER
APPL.	APPLIANCE	ASPH.	GND.	GROUND	R.D.	ROOF DRAIN
		ASPH.	GR.	GRADE	RFR.	RAFTER
		ASPH.	GRT.	GROUT	RAD.	RADIUS
		ASPH.	GYP. BD.	GYP.SUM BOARD	RECT.	RECTANGULAR
		ASPH.	G.L.B.	GLUE-LAMINATED BEAM	R.M.	ROOM
		ASPH.	H.C.W.C.	HANDICAPPED WATER CLOSET	REF.	REFERENCE
		ASPH.	HNGR.	HANGER HK. HOOK	REFR.	REFRIGERATOR
		ASPH.	H.B.	HOLE BIBB	RGTR.	REGISTER
		ASPH.	H.C.	HOLLOW CORE	REINF.	REINFORCED
		ASPH.	H.W.D.	HARDWOOD	REQ.	REQUIRED
		ASPH.	H.W.U.	HARDWARE	RESIL.	RESILIENT
		ASPH.	H.P.	HEAT PUMP	RFG.	ROUGH OPENING
		ASPH.	H.M.	HOLLOW METAL	R/O	ROUGH OPENING
		ASPH.	HORIZ.	HORIZONTAL	RUD.	REDWOOD
		ASPH.	H.R.	HEIGHT	RUL.	RAIN WATER LEADER
		ASPH.	HGT.	HEIGHT	S.	SOUTH
		ASPH.	I.D.	INSIDE DIAMETER	S.C.	SOLID CORE
		ASPH.	INSUL.	INSULATION	S.C.D.	SEAT COVER DISPENSER
		ASPH.	INT.	INTERIOR	S.D.	SOAP DISPENSER
		ASPH.	INV.	INVERT ELEVATION	S.M.	SHEET METAL
		ASPH.	JAN.	JANITOR	SCHED.	SCHEDULE
		ASPH.	J.T.	JOINT	SCRN.	SCREEN
		ASPH.	JST.	JOIST	SECT.	SECTION
		ASPH.	KIT.	KITCHEN	SEIS.	SEISMIC
		ASPH.	K.O.	KNOCK-OUT	SH.	SHELF
		ASPH.	L.A.B.	LABORATORY	SHUR.	SHOWER
		ASPH.	L.S.	LAG SCREW	SHT.	SHEET
		ASPH.	L.A.T.	LATERAL	SHTG.	SHEATHING
		ASPH.	L.A.M.	LAMINATE	SIM.	SIMILAR
		ASPH.	L.A.V.	LAVATORY	SPEC.	SPECIFICATION
		ASPH.	L.K.R.	LOCKER	SQ.	SQUARE
		ASPH.	L.T.	LIGHT	STGR.	STAGGERED
		ASPH.	L.T. WT.	LIGHT WEIGHT	SST.	STAINLESS STEEL
		ASPH.	MATL.	MATERIAL	STIFF.	STIFFENER
		ASPH.	MAX.	MAXIMUM	STRUC.	STRUCTURAL
		ASPH.	M.B.	MACHINE BOLT	S.S.K.	SERVICE SINK
		ASPH.	MAS.	MASONRY	STA.	STATION
		ASPH.	M.C.	MEDICINE CABINET	STD.	STANDARD
		ASPH.	MECH.	MECHANICAL	STL.	STEEL
		ASPH.	MEMB.	MEMBRANE	STOR.	STORAGE
		ASPH.	M.T.L.	METAL	STR.	STRUCTURAL
		ASPH.	MFR.	MANUFACTURER	SUSP.	SUSPENDED
		ASPH.	M.D.G. (S)	MOLDING (S)	SYM.	SYMMETRICAL
		ASPH.	M.H.	MANHOLE	T.	TREAD
		ASPH.	MIN.	MINIMUM	T.B.	TOWEL BAR
		ASPH.	MIR.	MIRROR	T.C.	TOP-OF-CURB
		ASPH.	MISC.	MISCELLANEOUS	T&G	TONGUE AND GROOVE
		ASPH.	M.O.	MASONRY OPENING	T.P.	TOP-OF-PAVEMENT
		ASPH.	M.R.	MOISTURE RESISTANT	T.P.D.	TOILET PAPER DISPENSER
		ASPH.	M.T.D.	MOUNTED	TELE.	TELEPHONE
		ASPH.	MUL.	MULLION	TERR.	TERRAZZO
		ASPH.	(N)	NEW	THK.	THICK
		ASPH.	N.	NORTH	T.O.	TOP OF
		ASPH.	NAT.	NATURAL	TRTD.	TREATED
		ASPH.	NO.	NUMBER	T.W.	TOP-OF-WALL
		ASPH.	NOM.	NOMINAL	TYP.	TYPICAL
		ASPH.	N.T.S.	NOT-TO-SCALE	UTIL.	UTILITY
		ASPH.	N.P.T.	NATIONAL PIPE THREAD	UNF.	UNFINISHED
		ASPH.	O.A.	OVERALL	U.ON.	UNLESS OTHERWISE NOTED
		ASPH.	O.B.S.	OBSCURE	U.O.S.	UNLESS OTHERWISE SHOWN
		ASPH.	O.C.	ON CENTER	UR.	URNIAL
		ASPH.	O.D.	OUTSIDE DIAMETER	VB	VAPOR BARRIER
		ASPH.	O.F.C.I.	OWNER FURNISHED, CONTRACTOR INSTALLED	VERT.	VERTICAL
		ASPH.	O.F.O.I.	OWNER FURNISHED, OWNER INSTALLED	VEST.	VESTIBULE
		ASPH.	OFF.	OFFICE	VEN.	VENEER
		ASPH.	OPNG.	OPENING	V.T.O.	VENT-TO-OUTSIDE
		ASPH.	OPP.	OPPOSITE	V.T.R.	VENT-TO-ROOF
		ASPH.	O.P.T.	OPTIONAL	VOL.	VOLUME
		ASPH.	O.S.A.	OUTSIDE AIR	W.	WEST
		ASPH.	O.S.B.	ORIENTED STRAND BOARD	W.C.	WATER CLOSET
		ASPH.	P.N.L.(S)	PANEL(S)	W.U.	WOOD
		ASPH.	PART. BD.	PARTICLE BOARD	W/O	WITHOUT
		ASPH.	PEN.	PENETRATION	W/P.	WATERPROOF
		ASPH.			W&C.T.	WAINSCOT
		ASPH.			WT.	WEIGHT
		ASPH.			W.U.F.	WELDED WIRE FABRIC
		ASPH.			WM.	WIRE MESH

VICINITY MAP



THE DOCUMENT AND THE IDEAS AND DESIGNS INCORPORATED HEREIN ARE THE PROPERTY OF RODD HANSEN ARCHITECT, LLC, AND IS NOT TO BE USED, IN WHOLE OR PART, FOR ANY OTHER PROJECT WITHOUT THE WRITTEN AUTHORIZATION OF RODD HANSEN ARCHITECT, LLC.

RODD HANSEN ARCHITECT, LLC
 1551 Oak Street, Suite A
 Eugene, Oregon 97401
 Phone: (541) 687-1800
 Fax: (541) 687-1200
 E-Mail: rodd@rharchitectural.com

4J - SEHS LIBRARY ROOFING
 SOUTH EUGENE HIGH SCHOOL

TITLE: TITLE SHEET

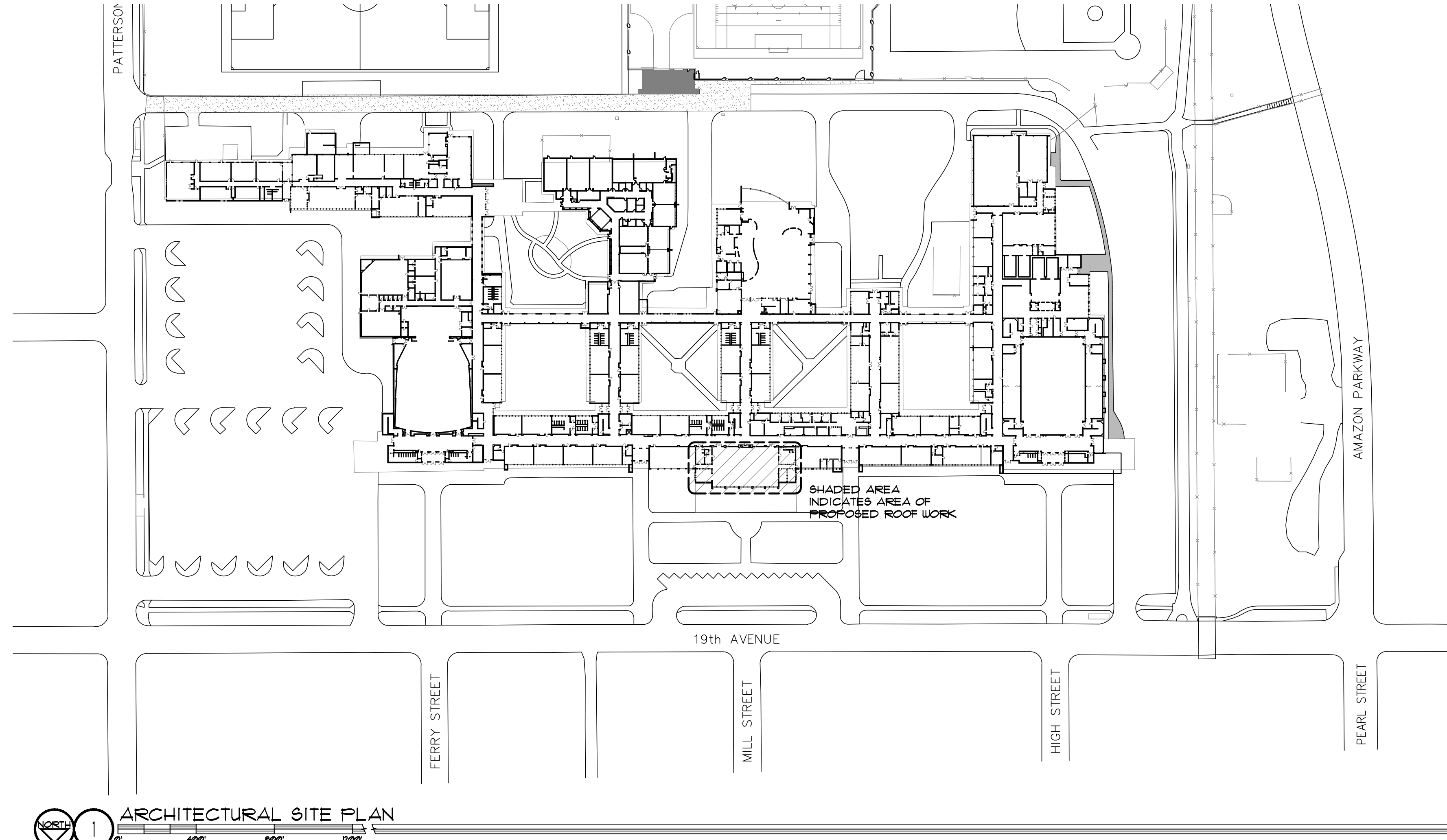
JOB#: 1306.01062020

DRAWN BY: JSD

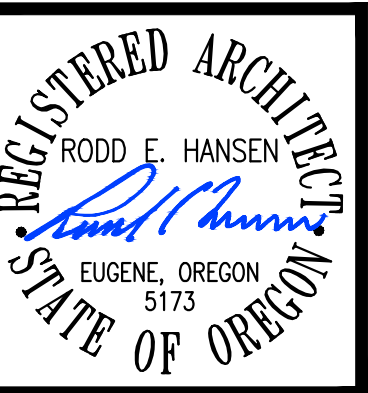
ISSUE DATE: 03/16/2020

SCALE: NONE

A0.1



1 NORTH
SCALE: 1" = 400'-0"



THE DOCUMENT AND THE IDEAS AND DESIGNS INCORPORATED HEREIN ARE THE PROPERTY OF RODD HANSEN ARCHITECT, LLC, AND IS NOT TO BE USED, IN WHOLE OR PART, FOR ANY OTHER PROJECT WITHOUT THE WRITTEN AUTHORIZATION OF RODD HANSEN ARCHITECT, LLC

RODD HANSEN ARCHITECT, LLC
 1551 Oak Street, Suite A
 Eugene, Oregon 97401
 Phone: (541)-687-1800
 Fax: (541)-687-1200
 E-Mail: rodd@rarchitectural.com

4J - SEHS LIBRARY ROOFING
 SOUTH EUGENE HIGH SCHOOL
 400 EAST 19TH AVENUE
 97401-0606

ARCHITECTURAL
 TITLE: SITE PLAN

JOB#: 1306.01062020

DRAWN BY: JSD

△	--
△	--
△	--
△	--

ISSUE DATE: 03/16/2020

SCALE: 1" = 400'-0"

A1.1



THE DOCUMENT AND THE IDEAS AND DESIGNS INCORPORATED HEREIN ARE THE PROPERTY OF RODD HANSEN ARCHITECT, LLC, AND IS NOT TO BE USED, IN WHOLE OR PART, FOR ANY OTHER PROJECT WITHOUT THE WRITTEN AUTHORIZATION OF RODD HANSEN ARCHITECT, LLC

RODD HANSEN ARCHITECT, LLC
1551 Oak Street, Suite A
Eugene, Oregon 97401
Phone: (541) 687-1800
Fax: (541) 687-1200
E-Mail: rodd@architectural.com

4J - SEHS LIBRARY ROOFING
SOUTH EUGENE HIGH SCHOOL
400 EAST 18TH AVENUE
EUGENE, OREGON 97401

TITLE: SECTIONS

JOB#: 1306.01062020

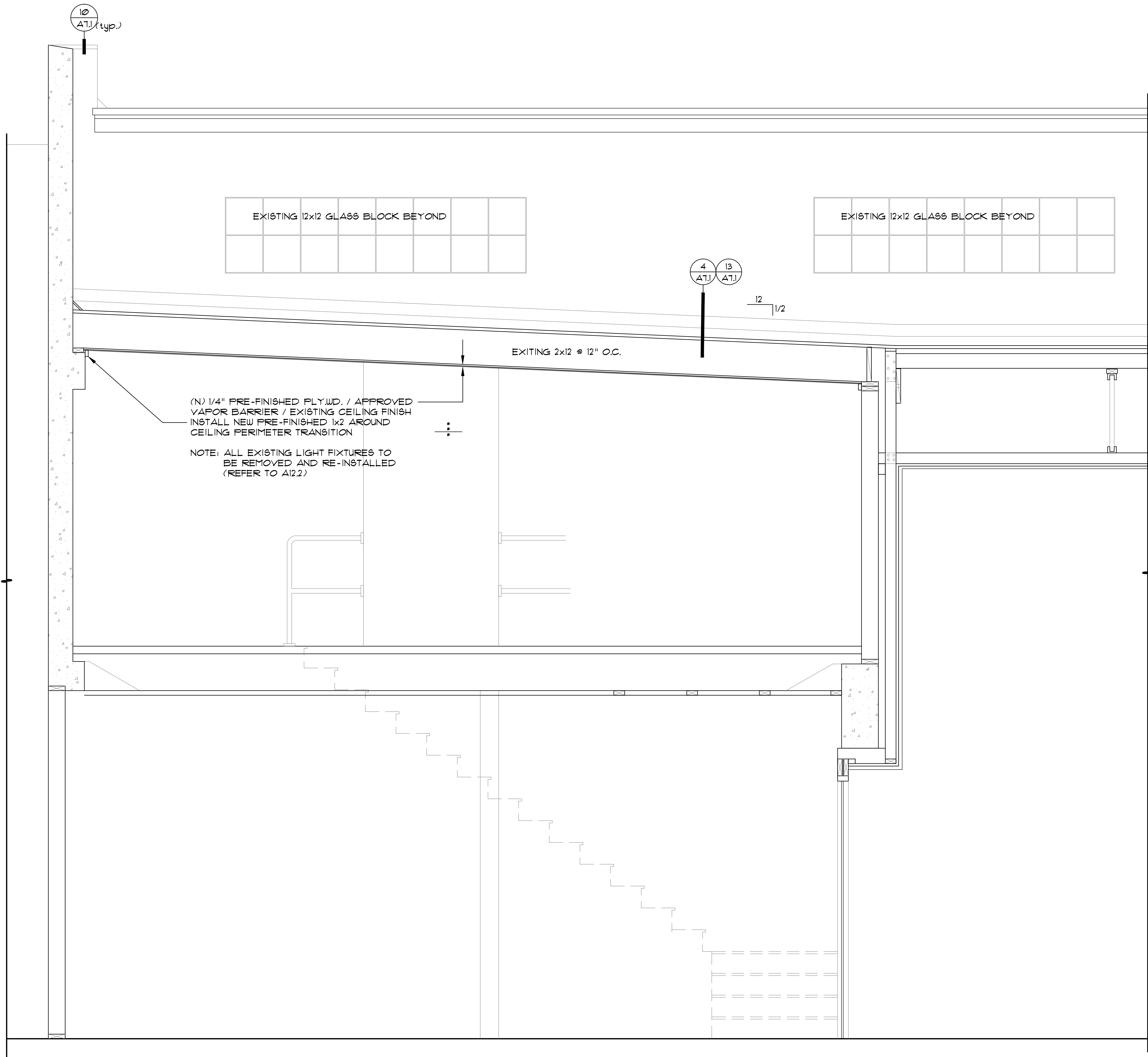
DRAWN BY: JSD

△	--
△	--
△	--
△	--

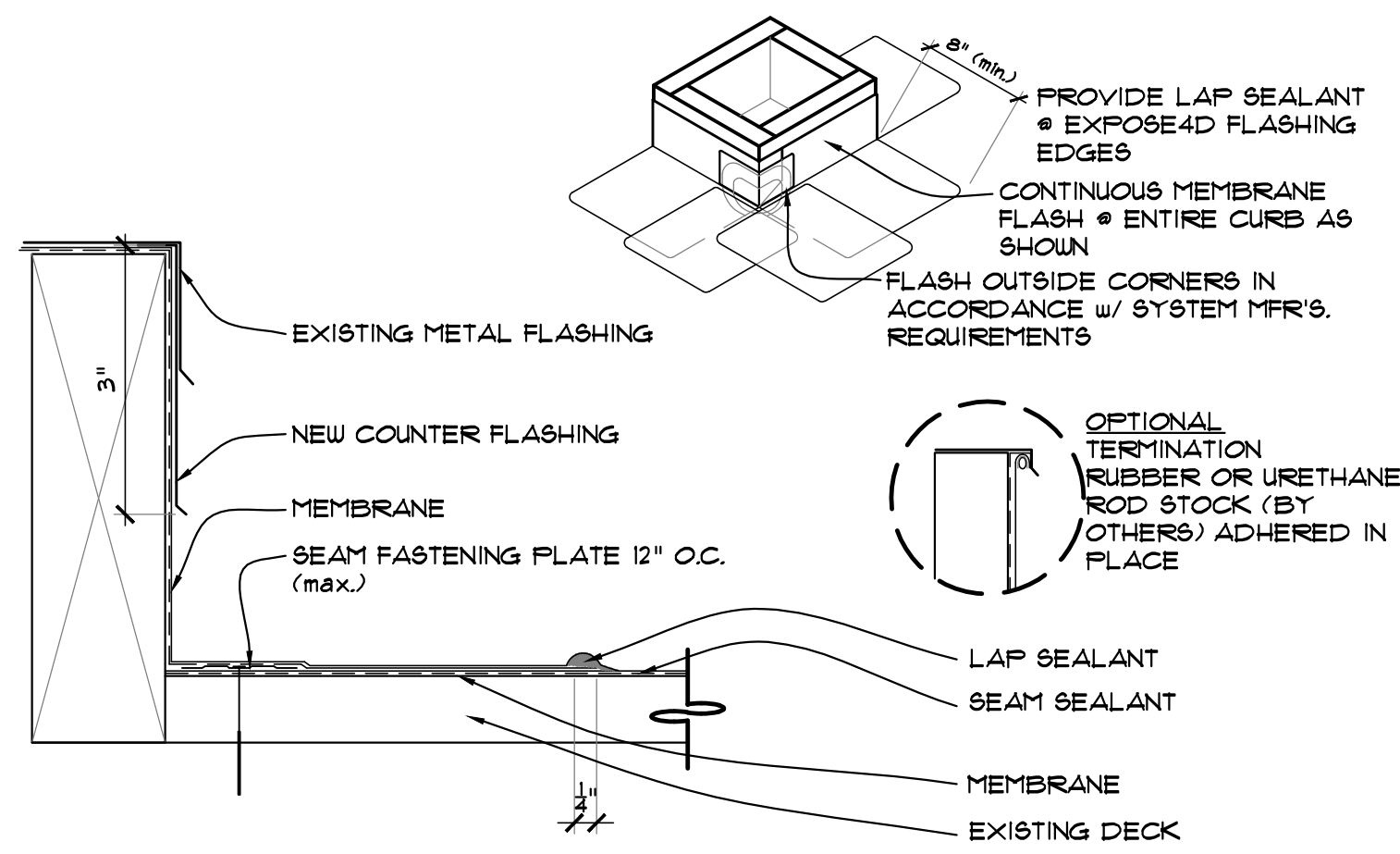
ISSUE DATE: 03/16/2020

SCALE: 3/4" = 1'-0"

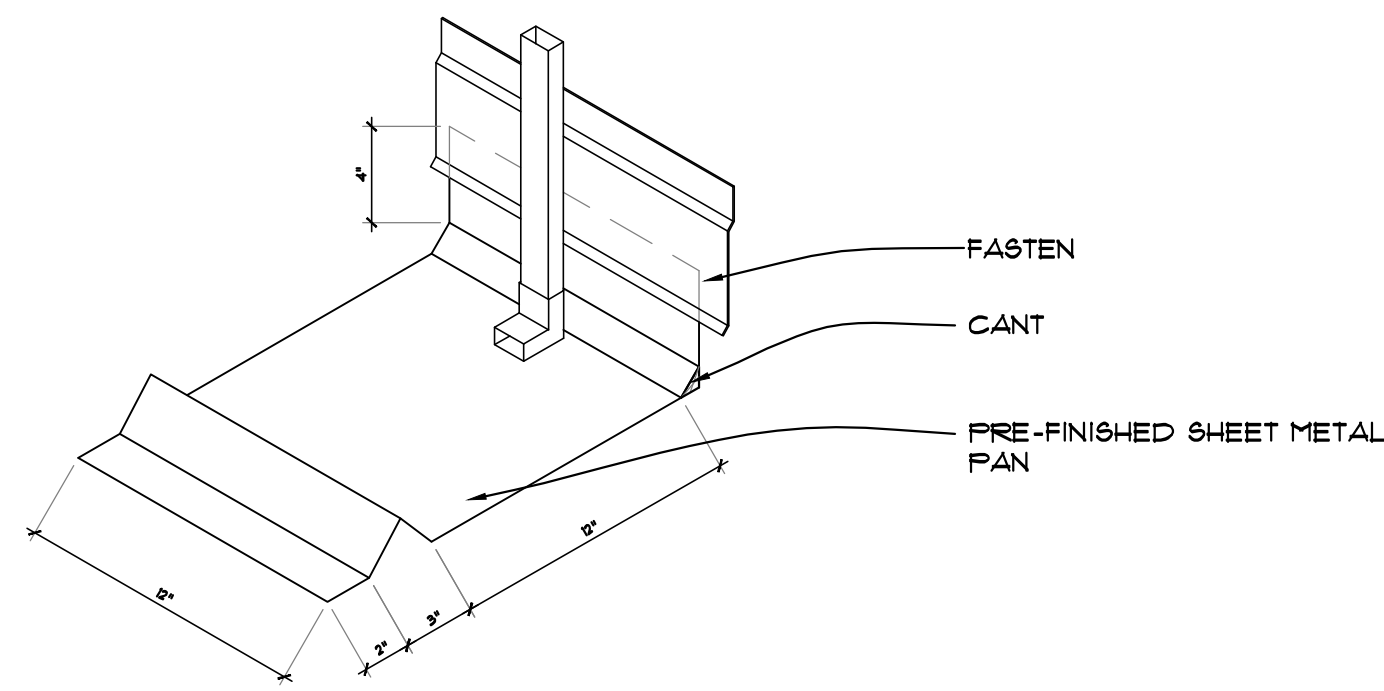
A5.1



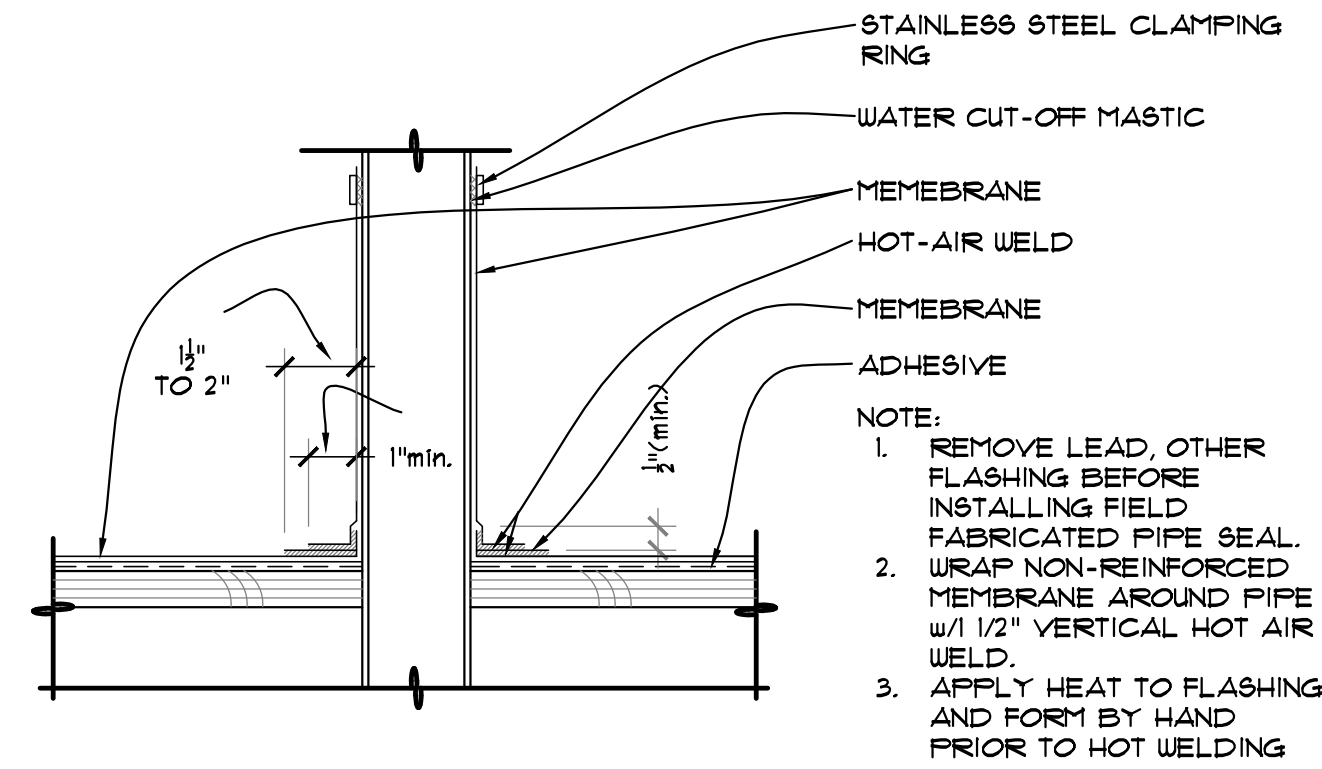
SECTION
SCALE: 3/4" = 1'-0"



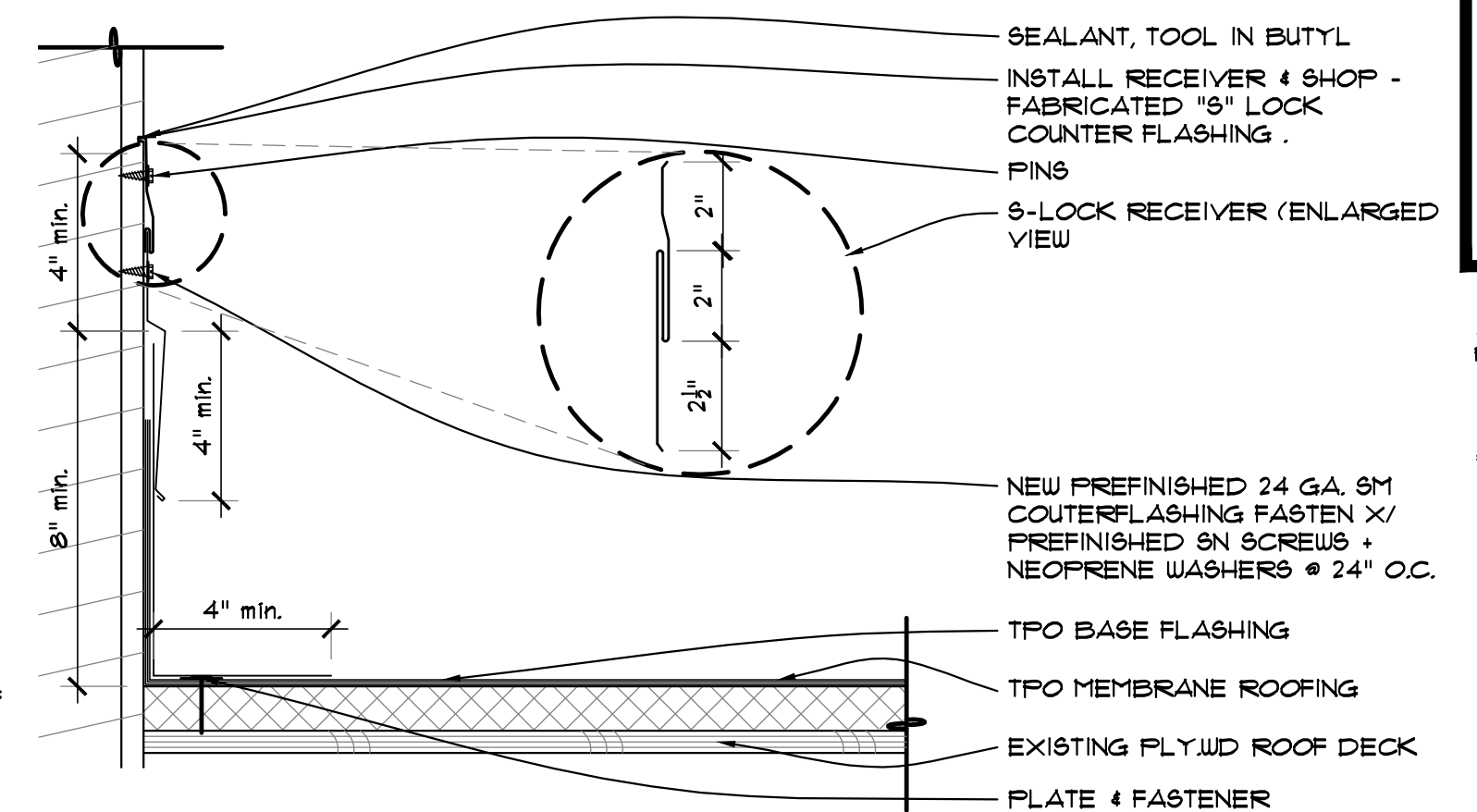
1 TPO CURB FLASHING DETAIL
SCALE: 1/2" = 1'-0"



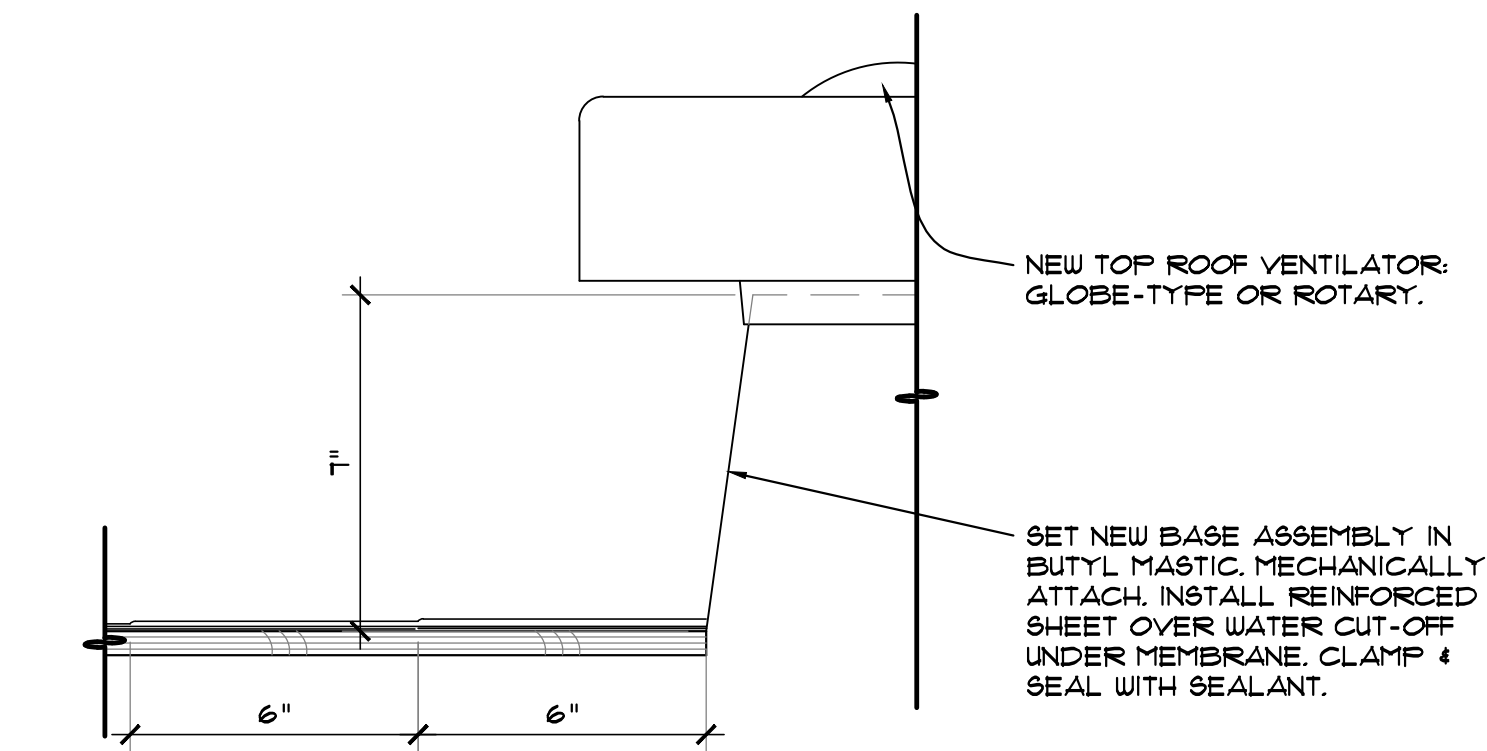
2 PRE-FINISHED SHEET METAL SPLASH PAN DETAIL
SCALE: 1 1/2" = 1'-0"



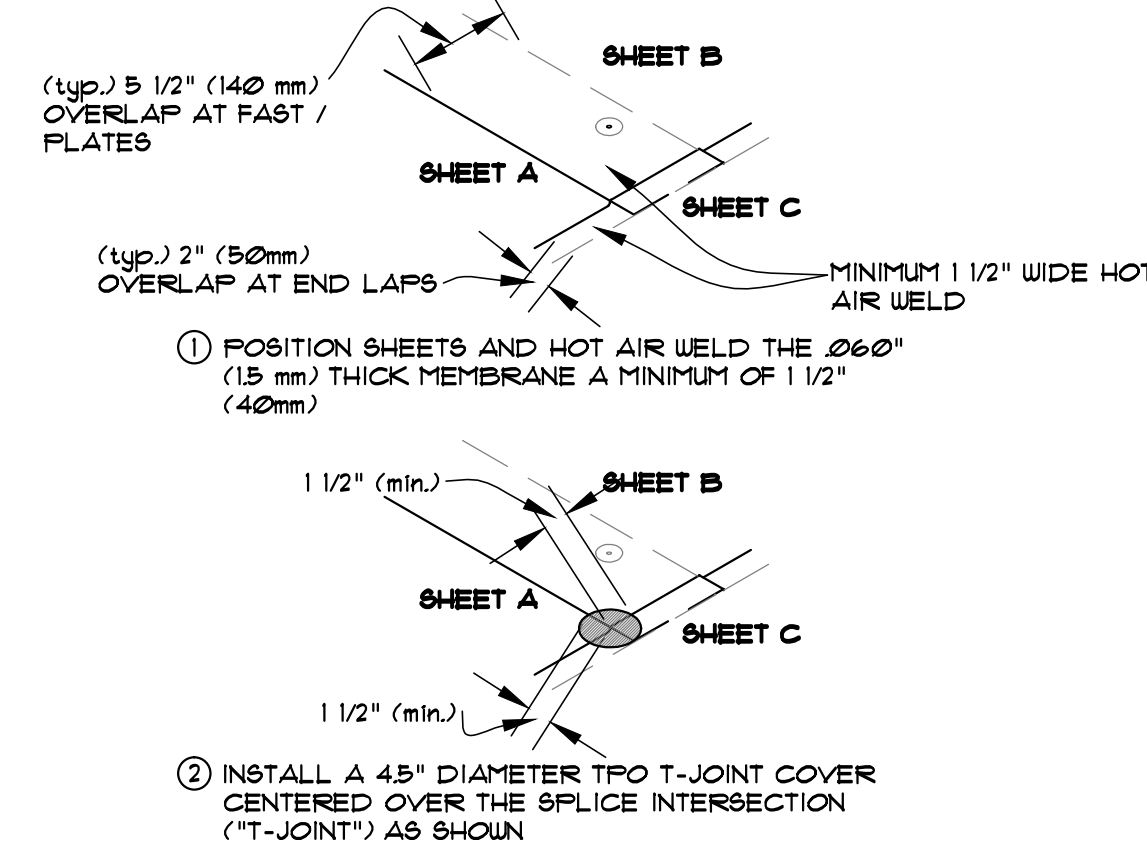
3 TPO PIPE PENETRATIONS (typ.) DETAIL
SCALE: 3" = 1'-0"



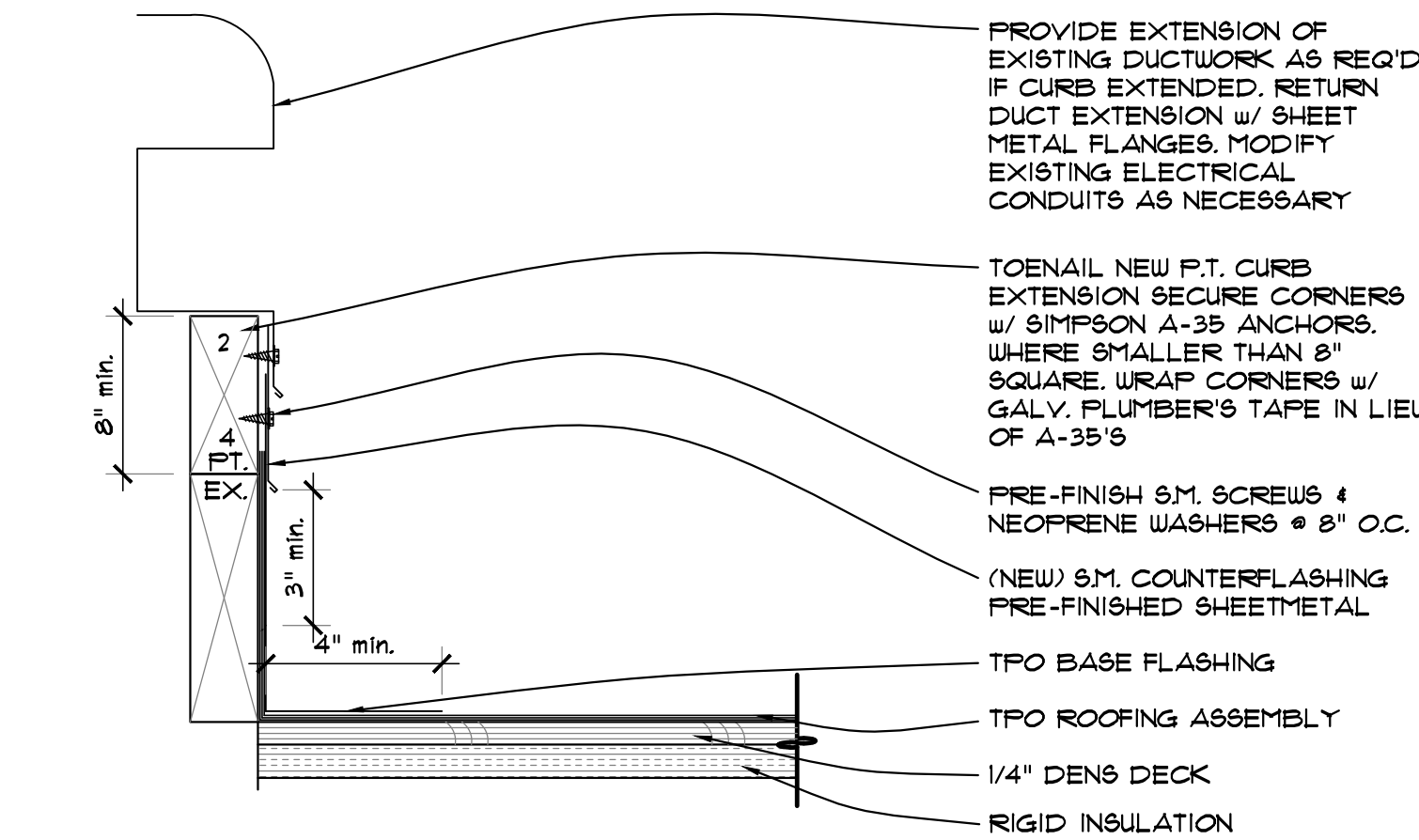
4 FLASHING AT WALL TO TPO ROOF DETAIL
SCALE: 3" = 1'-0"



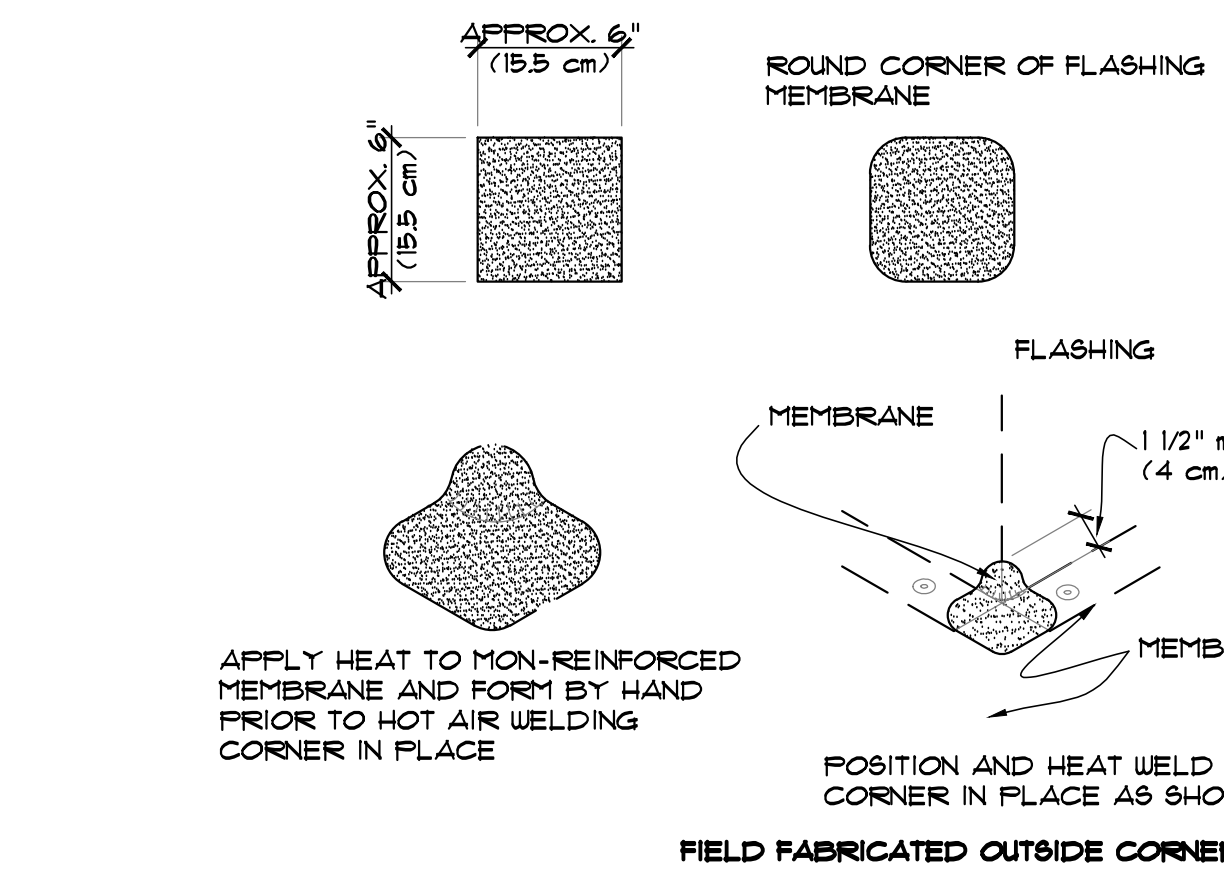
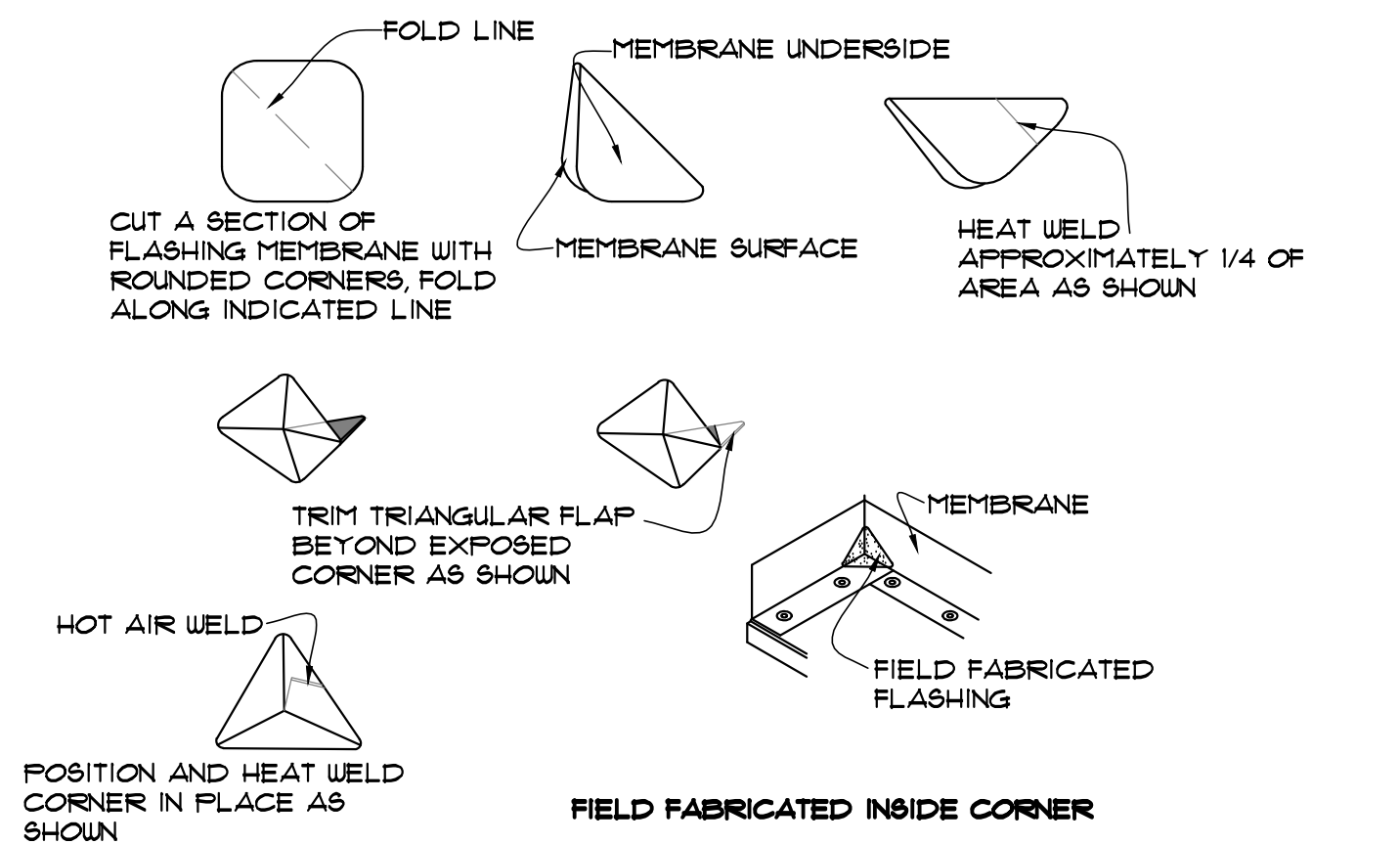
5 GRAVITY FLOW BENT BASE DETAIL
SCALE: 3" = 1'-0"



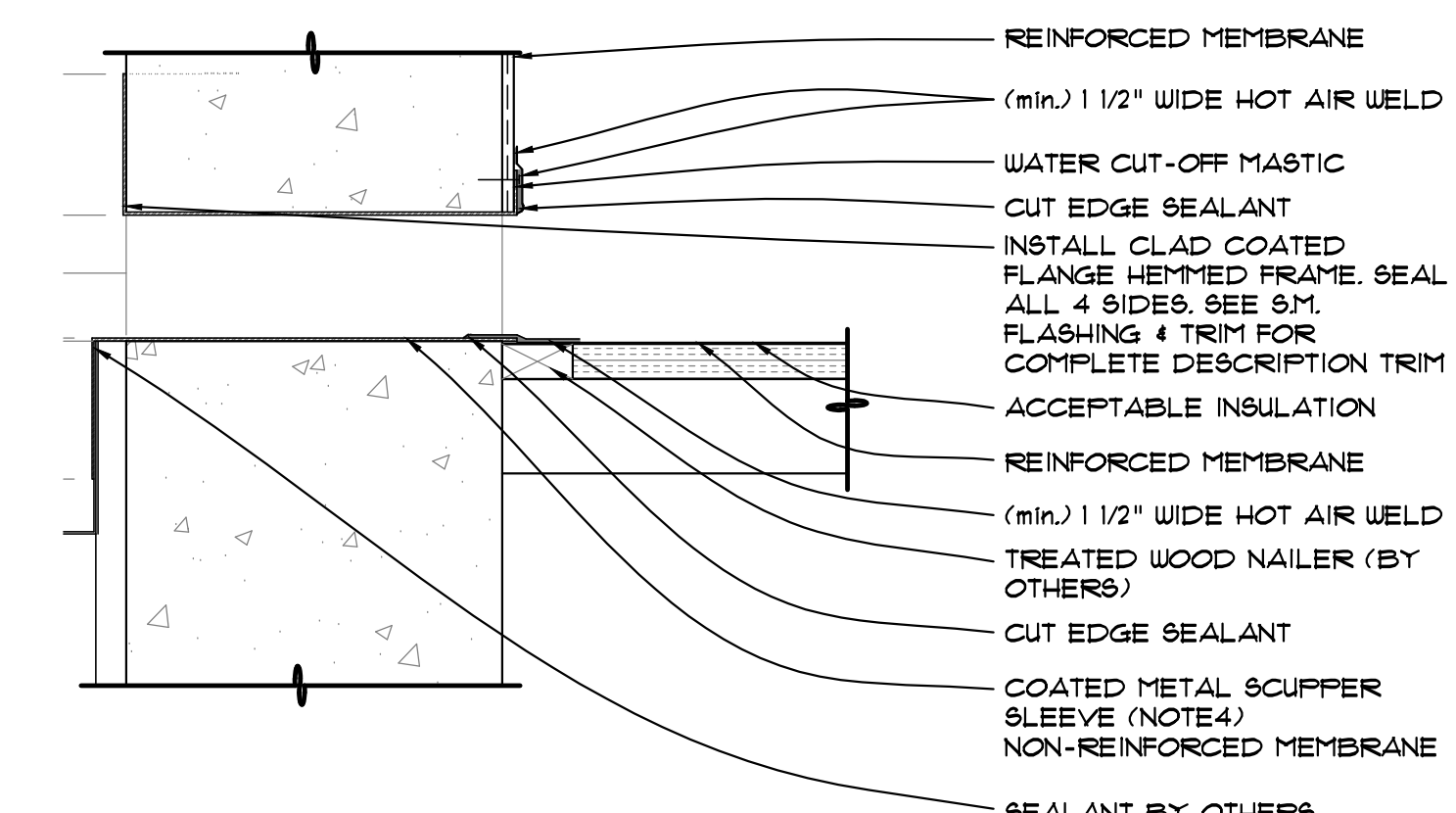
6 TPO REINFORCEMENT AT T-JOINT DETAIL
SCALE: 1" = 1'-0"



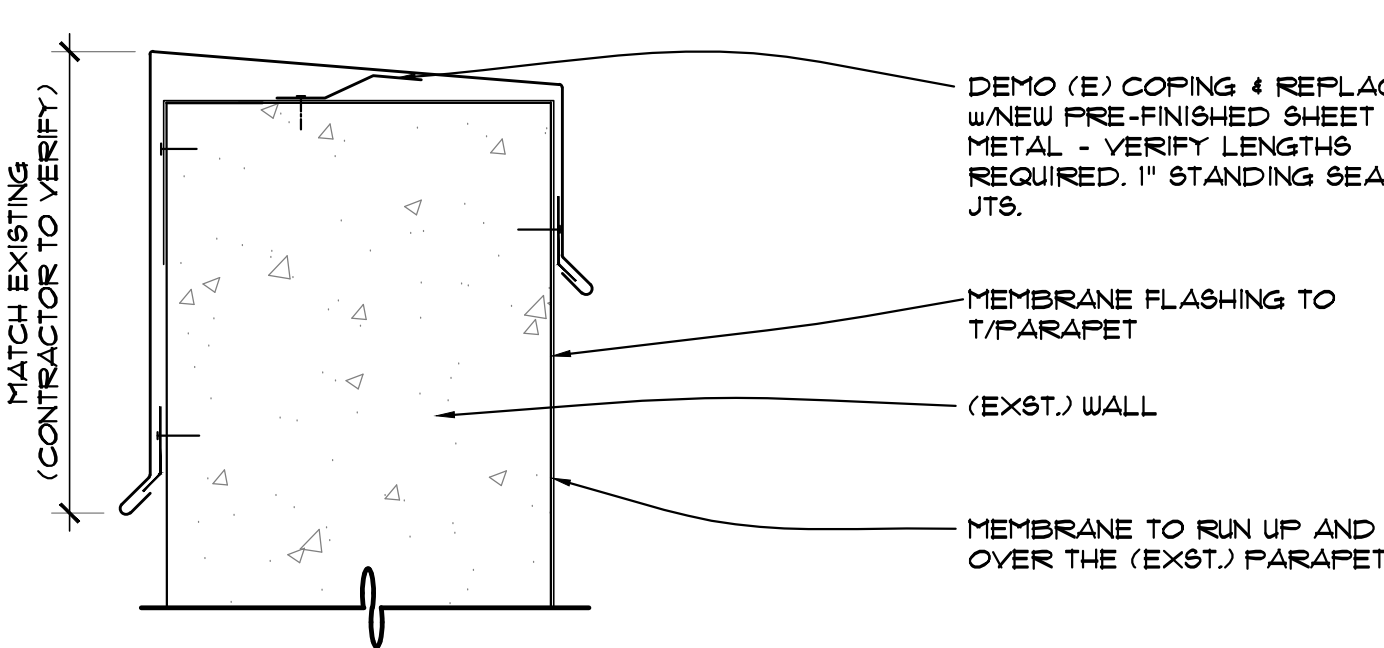
7 TPO CURB EXTENSION DETAIL
SCALE: 3" = 1'-0"



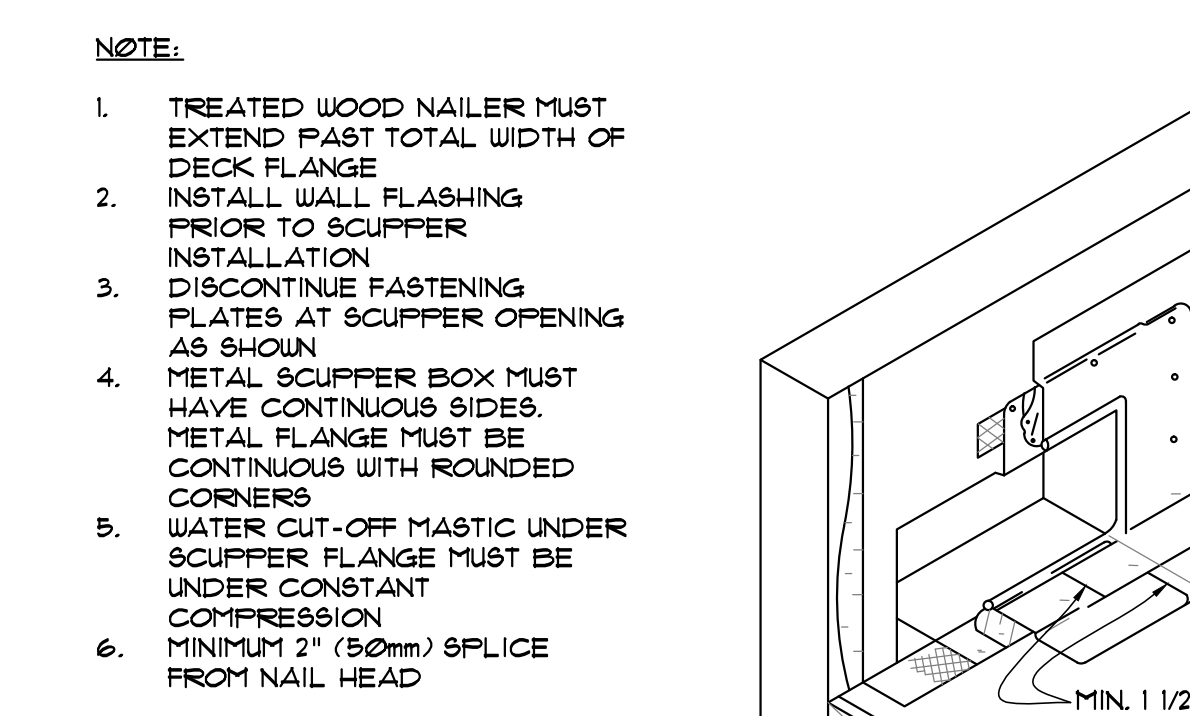
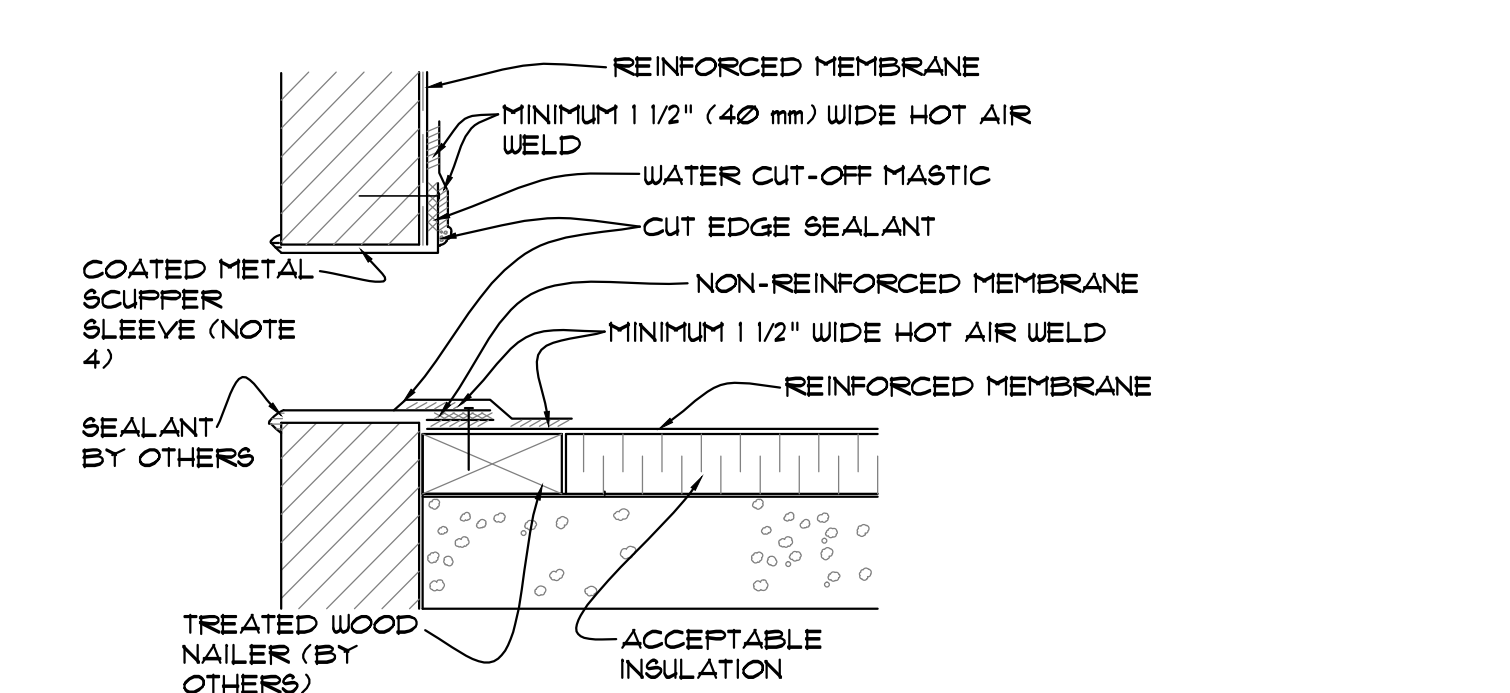
12 TPO INSIDE / OUTSIDE CORNER DETAILS
SCALE: 1 1/2" = 1'-0"



9 TPO THROUGH-WALL OVERFLOW DETAIL
SCALE: 3" = 1'-0"



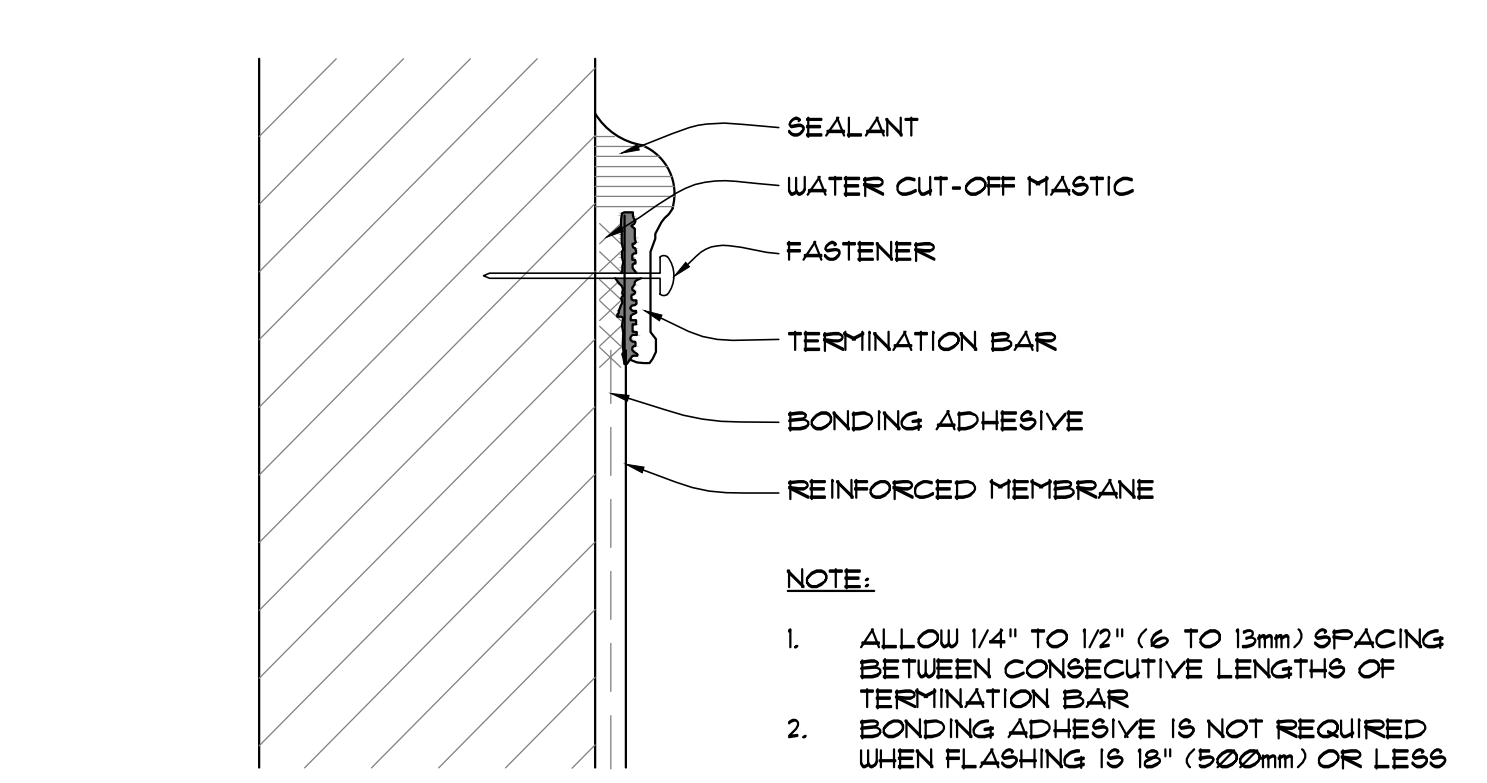
10 STANDING SEAM CAP METAL DETAIL
SCALE: 3" = 1'-0"



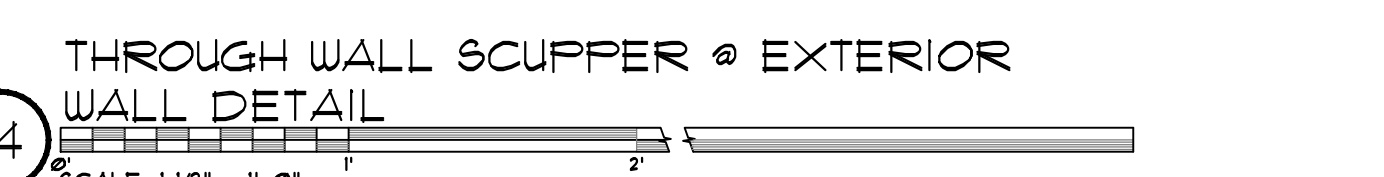
15 TPO THRU-WALL SCUPPER DETAIL
NO SCALE

NOT USED

16 NOT USED
SCALE: 3/4" = 1'-0"



13 TPO UNIT / WALL ATTACHMENT
SCALE: 3" = 1'-0"



14 THROUGH WALL SCUPPER @ EXTERIOR WALL DETAIL
SCALE: 1 1/2" = 1'-0"



THE DOCUMENT AND THE IDEAS AND DESIGN INCORPORATED HEREIN ARE THE PROPERTY OF RODD HANSEN ARCHITECT, L.L.C. AND IS NOT TO BE USED, IN WHOLE OR PART, FOR ANY OTHER PROJECT WITHOUT THE WRITTEN AUTHORIZATION OF RODD HANSEN ARCHITECT, L.L.C.

RODD HANSEN ARCHITECT, L.L.C.
1551 Oak Street Suite A
Eugene, Oregon 97401
Phone: (541)-681-1800
Fax: (541)-681-1200
E-Mail: rodd@architectural.com

4J - SEHS LIBRARY ROOFING
SOUTH EUGENE HIGH SCHOOL
400 EAST 18TH AVENUE
97401-8000

TITLE: DETAILS
JOB#: 1386.01062020
DRAWN BY: JSD

△	--
△	--
△	--
△	--

ISSUE DATE: 03/16/2020
SCALE: VARIES

A7.1



THE DOCUMENT AND THE IDEAS AND DESIGNS INCORPORATED HEREIN ARE THE PROPERTY OF RODD HANSEN ARCHITECT, L.L.C. AND IS NOT TO BE USED, IN WHOLE OR PART, FOR ANY OTHER PROJECT WITHOUT THE WRITTEN AUTHORIZATION OF RODD HANSEN ARCHITECT, L.L.C.

RODD HANSEN ARCHITECT, L.L.C.
1551 Oak Street Suite A
Eugene, Oregon 97401
Phone: (541)-681-1800
Fax: (541)-681-1200
E-Mail: roddhansenarchitectural.com

4J - SEHS LIBRARY ROOFING
SOUTH EUGENE HIGH SCHOOL
400 EAST 18TH AVENUE
97401-8000

SECOND FLOOR REFLECTED TITLE: CEILING PLAN

JOB#: 1386.01062020

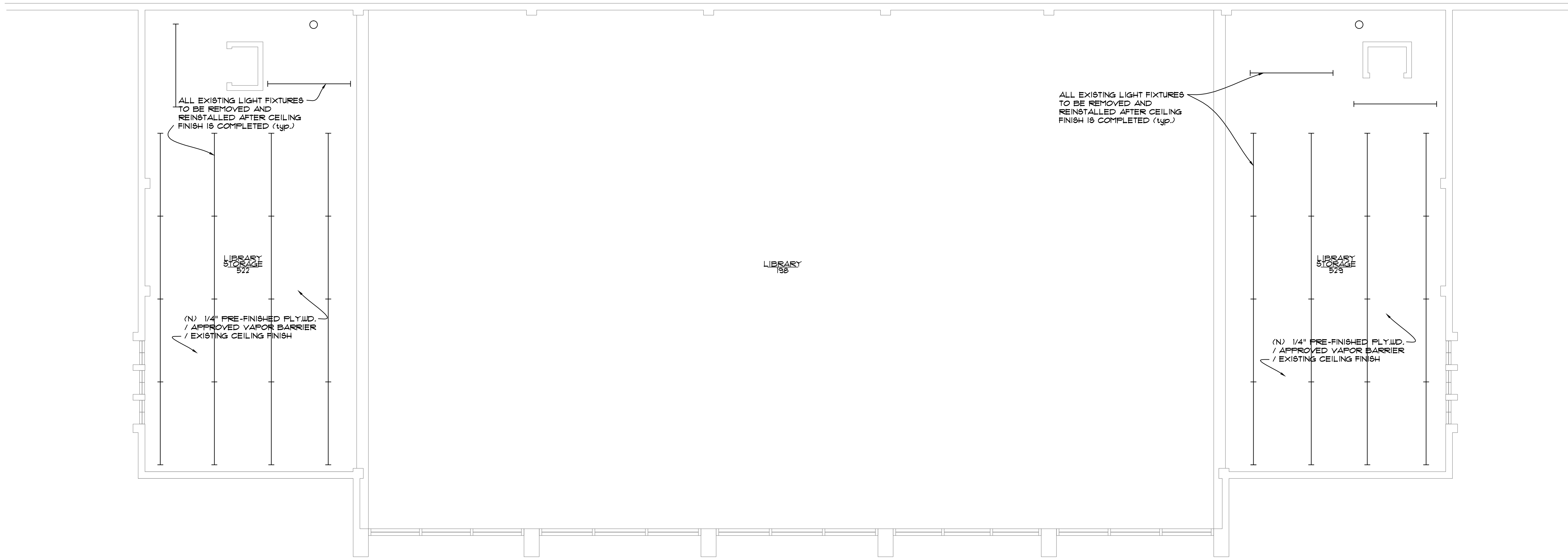
DRAWN BY: JSD

△	--
△	--
△	--
△	--

ISSUE DATE: 03/16/2020

SCALE: 3/16"=1'-0"

A12.2



SECOND FLOOR REFLECTED CEILING PLAN
SCALE: 3/16" = 1'-0"