

mahlum



Robertson | Sherwood | Architects PC

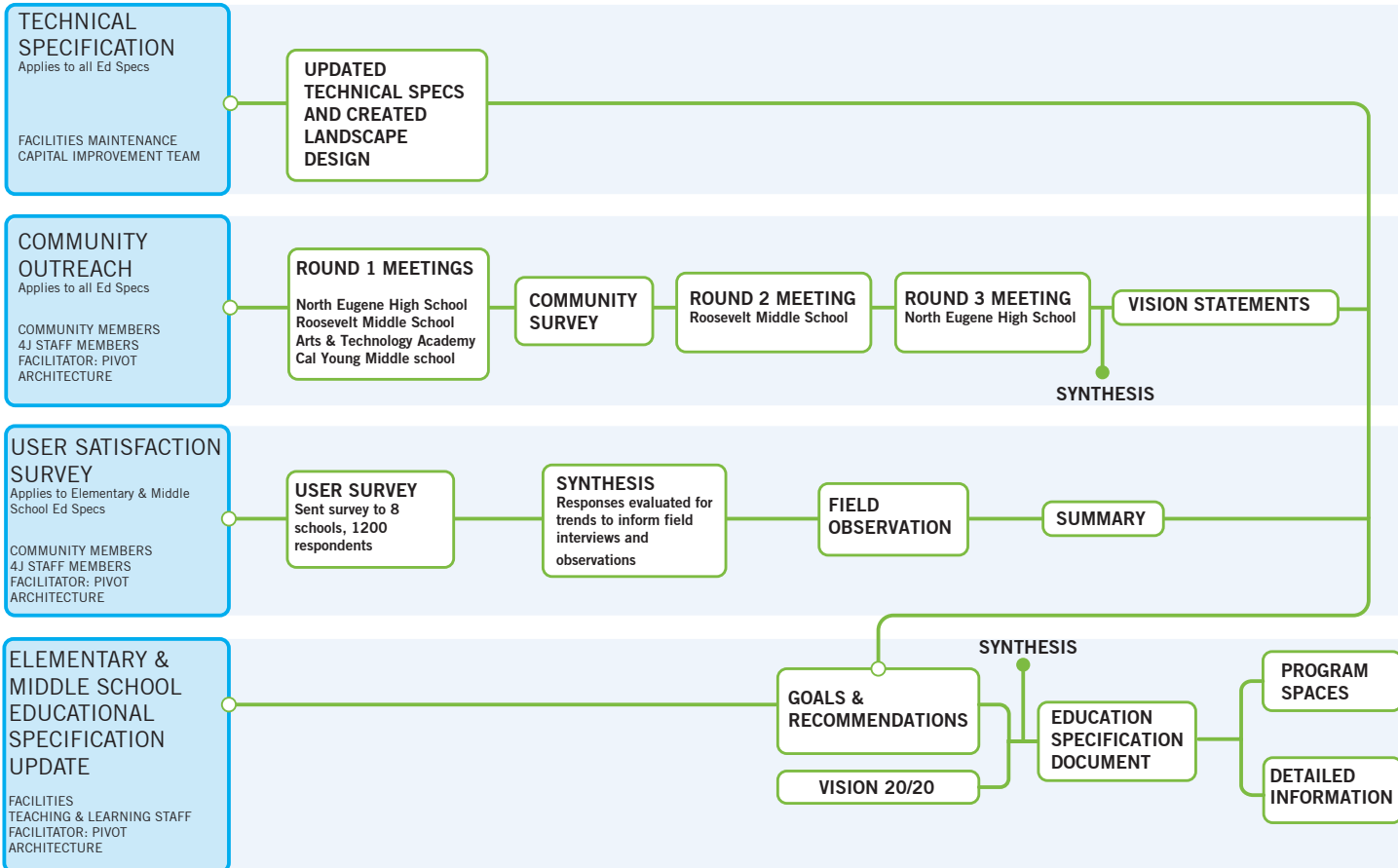
16 December 2019
COMMUNITY MEETING

Edison Elementary School

Eugene School District 4J

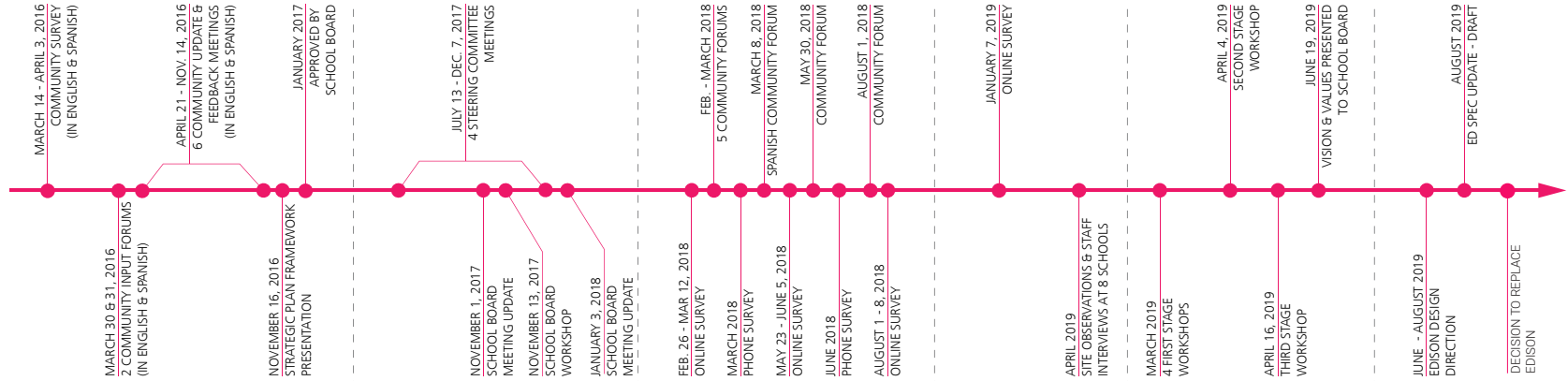
STRUCTURE

BOND PROJECT PROCESS FLOW



Participation Process and Planning: So far

TIMELINE

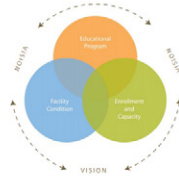


4J Vision 20/20 Strategic Plan



VISION:
 Every student connected
 to community and
 empowered to succeed
VISION 20/20

Long-Range Facilities Plan



Bond Measure Planning



Facility User Experience Study

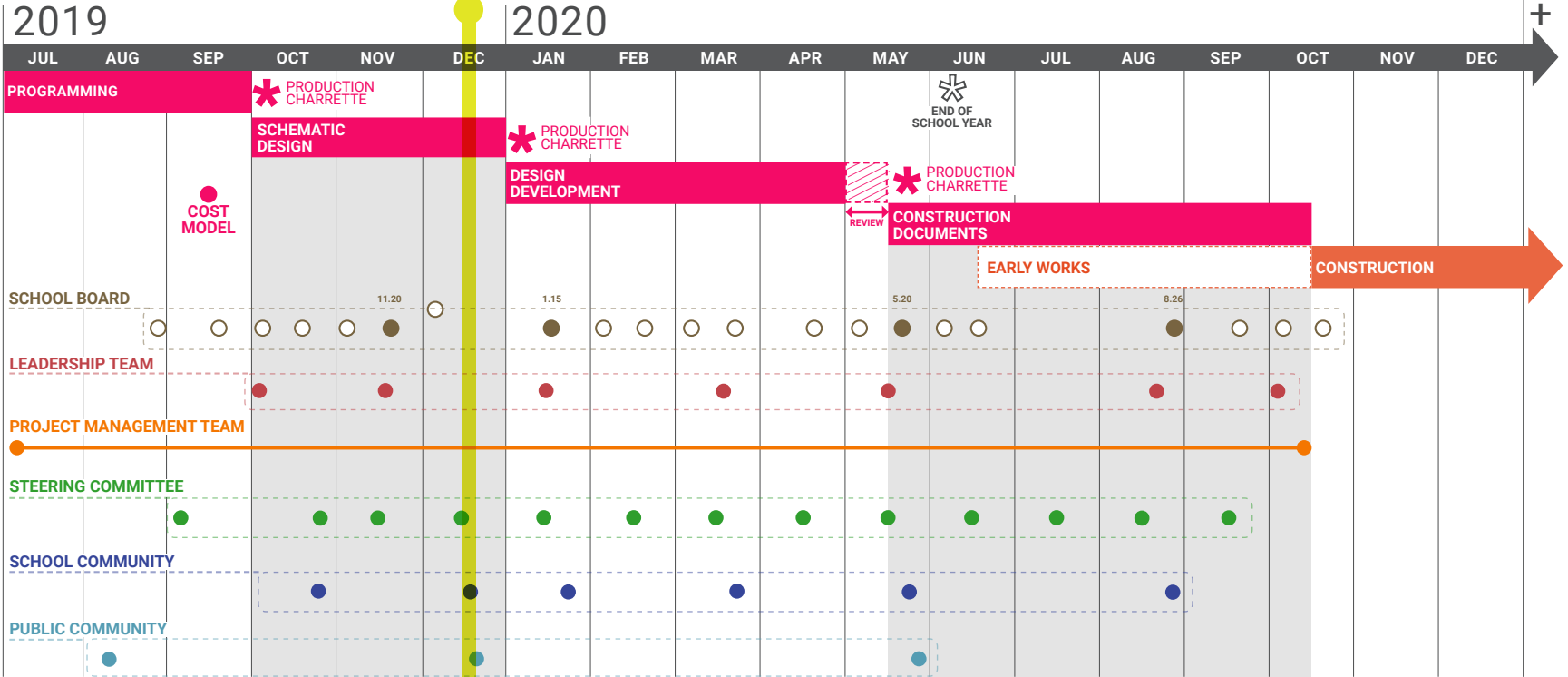


School Design Vision & Values



Elementary Educational Specifications





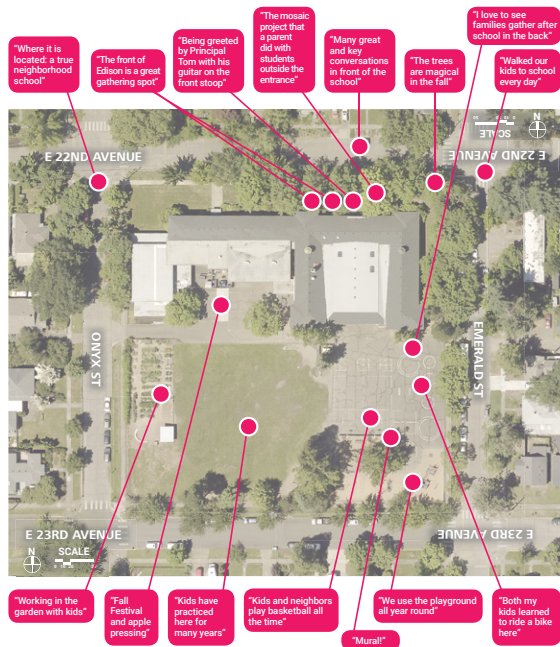
- PROJECT MANAGEMENT : WEEKLY
- STEERING COMMITTEE : 1 IN PROGRAMMING; 12 MEETINGS THROUGH CD
- SCHOOL COMMUNITY: 6 MEETINGS, THROUGH 50% CD



Listening to the Community

August 12th Community Meeting

What is your fondest memory of campus?

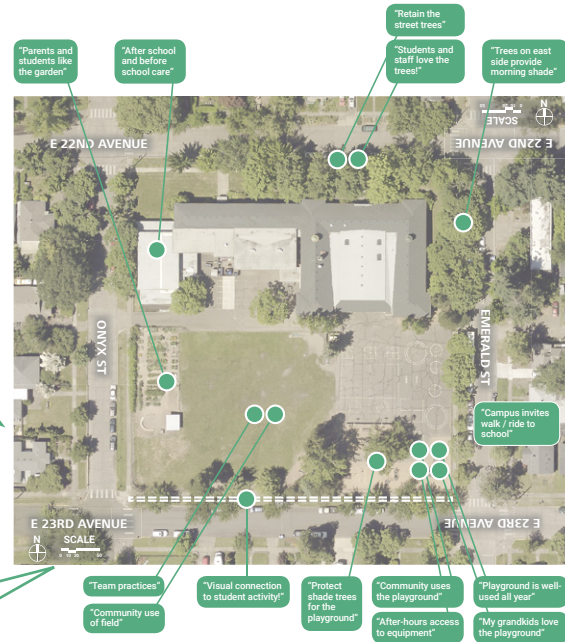


Many great conversations in front of the school

The trees are magical in the fall

Working in the garden with kids

How does the community use the campus?



Community use of field & team practices

Visual connection to student activity

Welcoming front door

Addressing
neighborhood
context

Scale of building

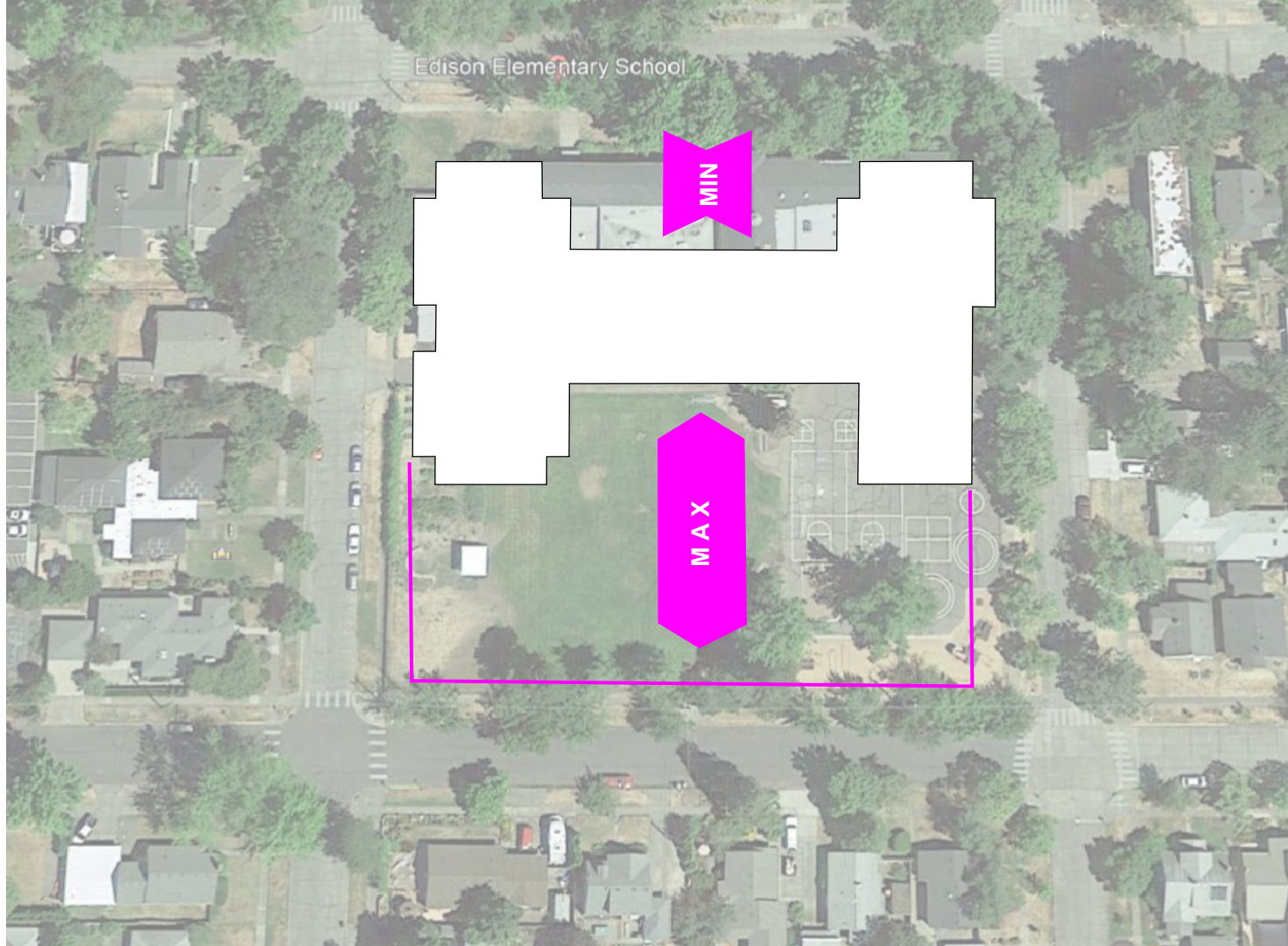
Accessibility



Open space maximized for play

Locate building close to 22nd

Efficient building footprint



Open space maximized for play

Integrate covered
play with building



The successful school will embody 4J Community's values and vision and represent the unique aspects of Edison Elementary School.

Provide Great Learning Environments

- Cooperation, integrity, inclusion, and respect
- Honor existing green spaces

Be Welcoming and Safe

- Physical and cultural center of the neighborhood
- Invite community into the building; respond to context

Contribute to an Equitable and Inclusive Community

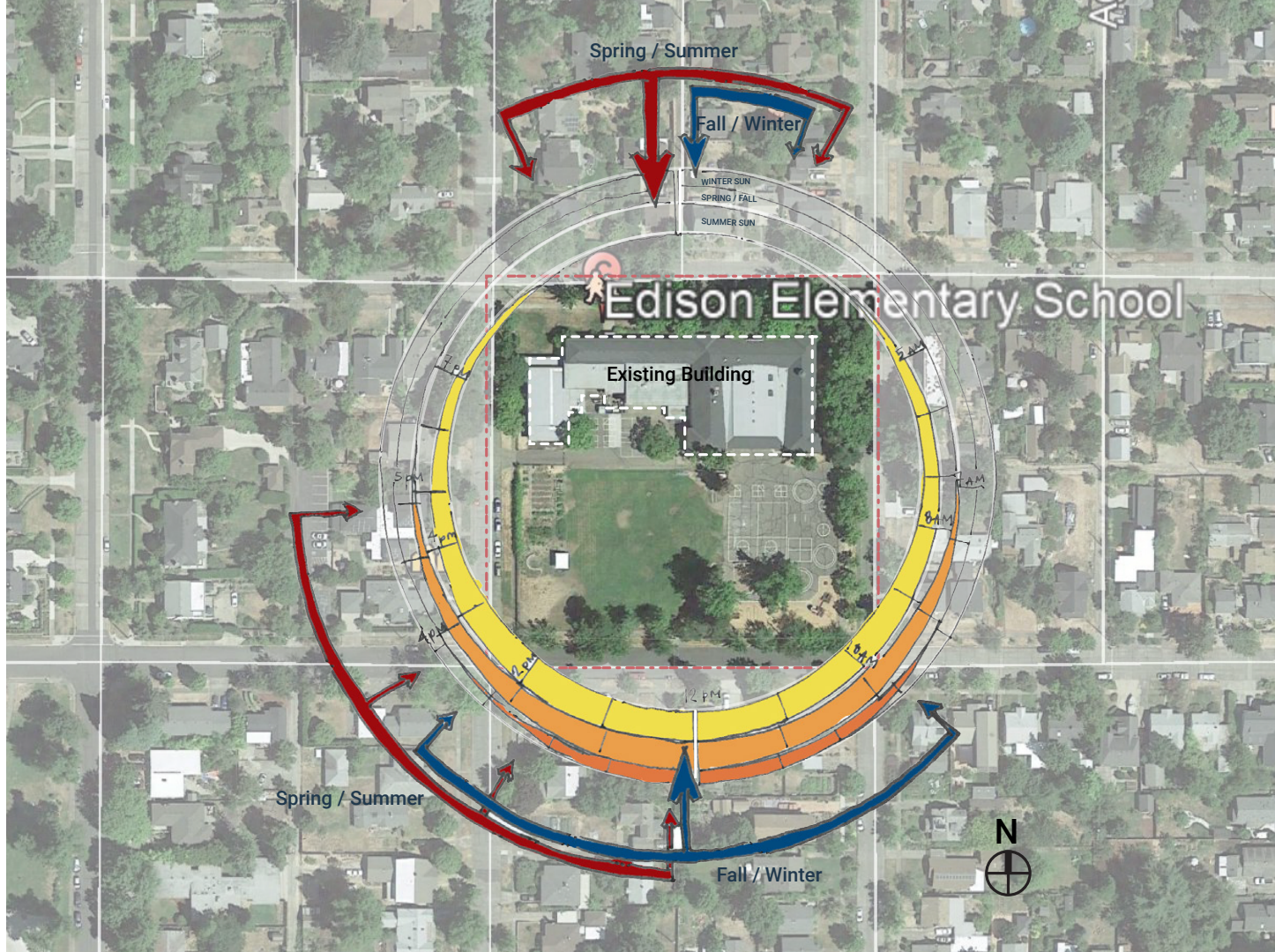
- Address variety of students attending the school
- Address socio-emotional health and program spaces to support student hygiene

Embody Programmatic, Ecological, and Economic Sustainability

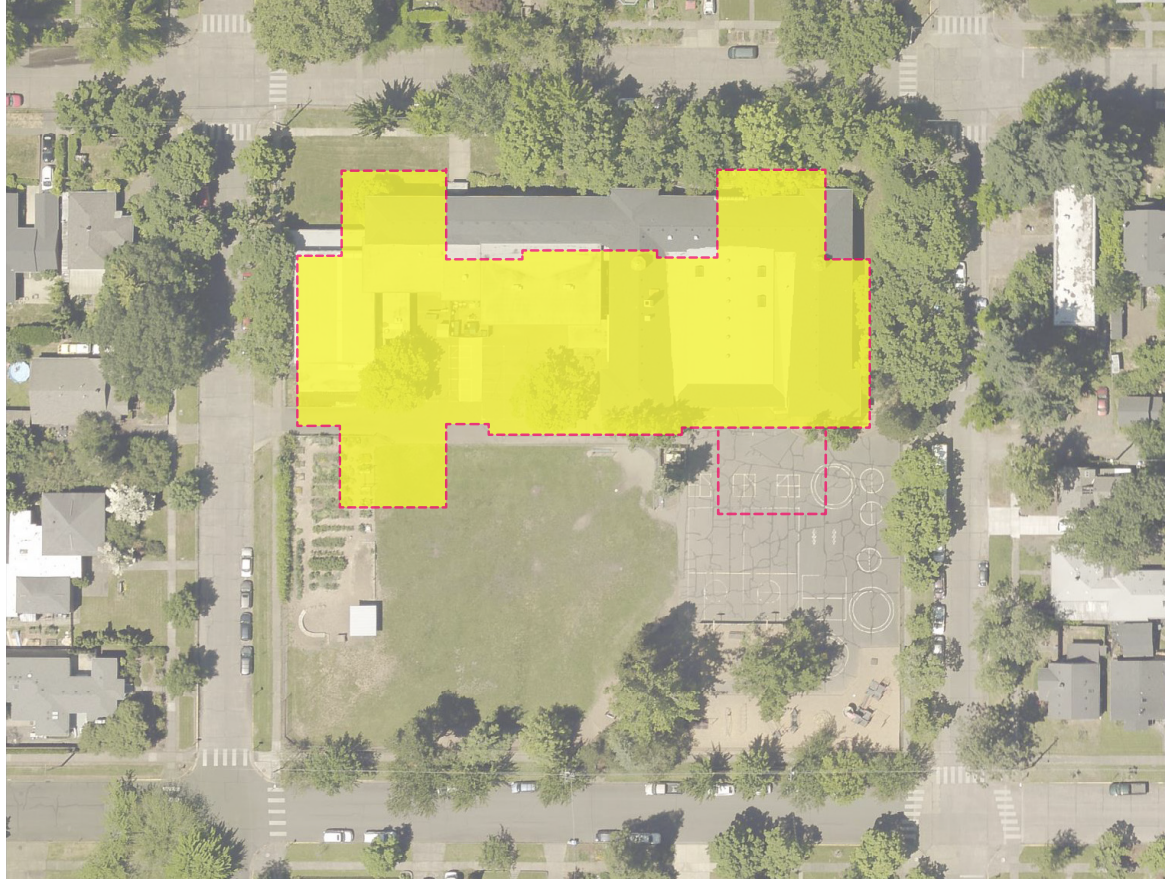
- Reflect the new Ed Spec with a design that can meet changing needs throughout time
- Respect natural resources and provide learning opportunities for Edison students
- Meet the schedule and budget goals provided by the Bond program

Environmental Site Analysis

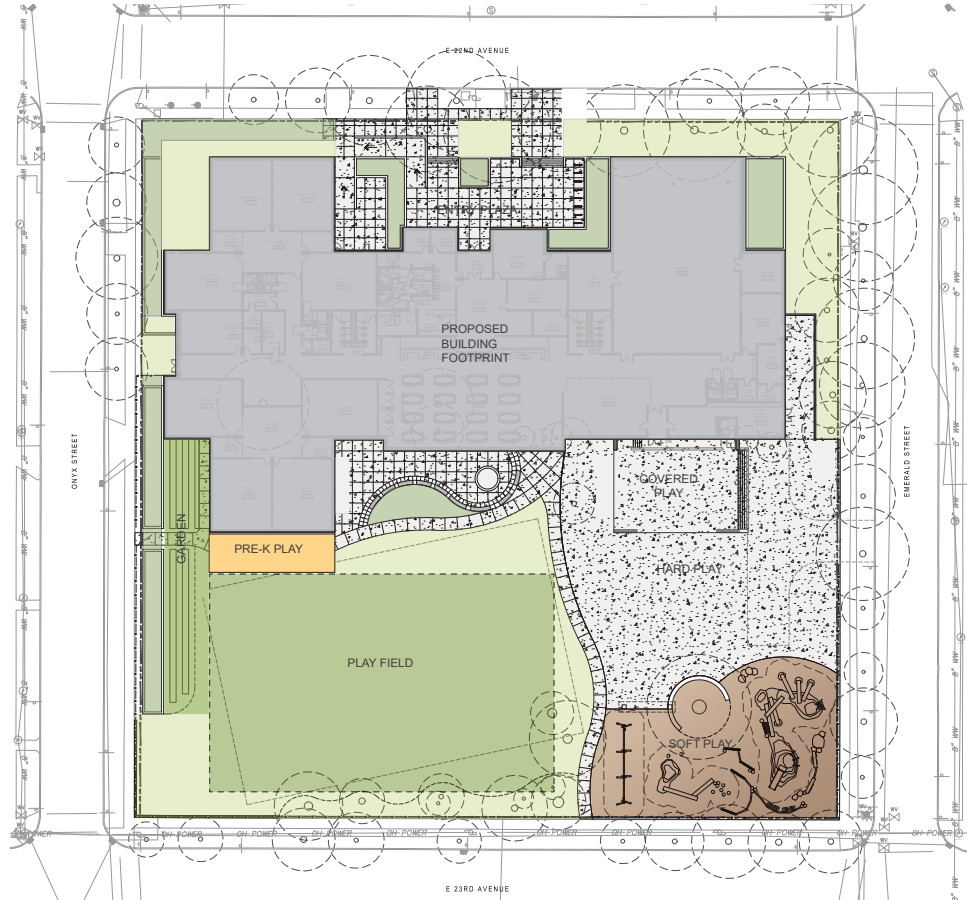
- Cool wind
- Warm wind
- Summer solstice sun path
- Spring & Fall sun path
- Winter solstice sun path



Existing Footprint vs New footprint



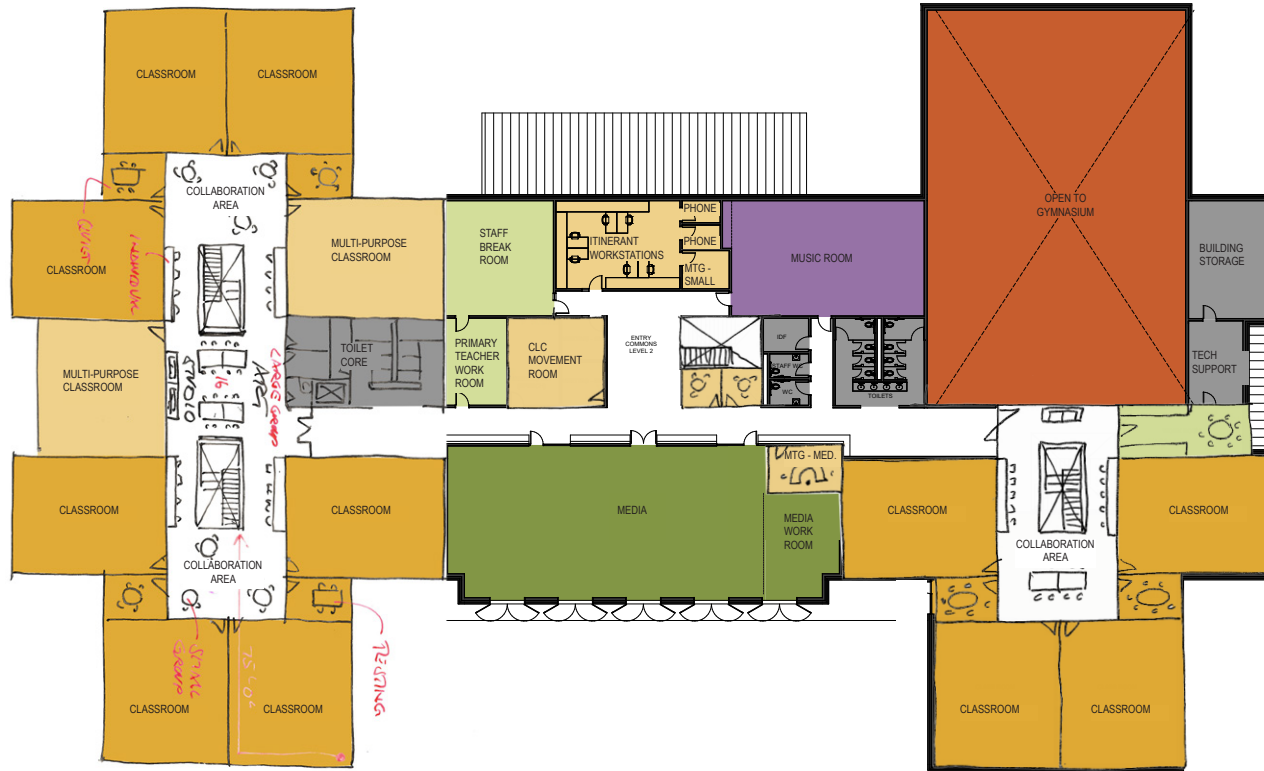
Preliminary Site Plan



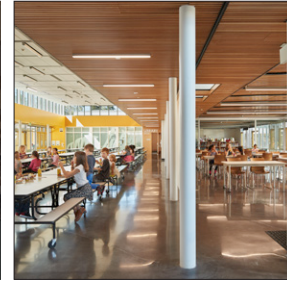
Ground Floor Plan



Second Floor Plan



Interior Learning Environments



POTENTIAL DESIGN STYLE: WHAT WE HEARD

Northwest
Style



62% Like



Traditional
Style



52% Like



Contemporary
Style



21% Like



Thank You!

