



4J Bond Update:
EDISON ELEMENTARY SCHOOL
DESIGN DIRECTION

Eugene School Board Meeting • August 28, 2019



Edison School Campus

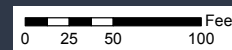
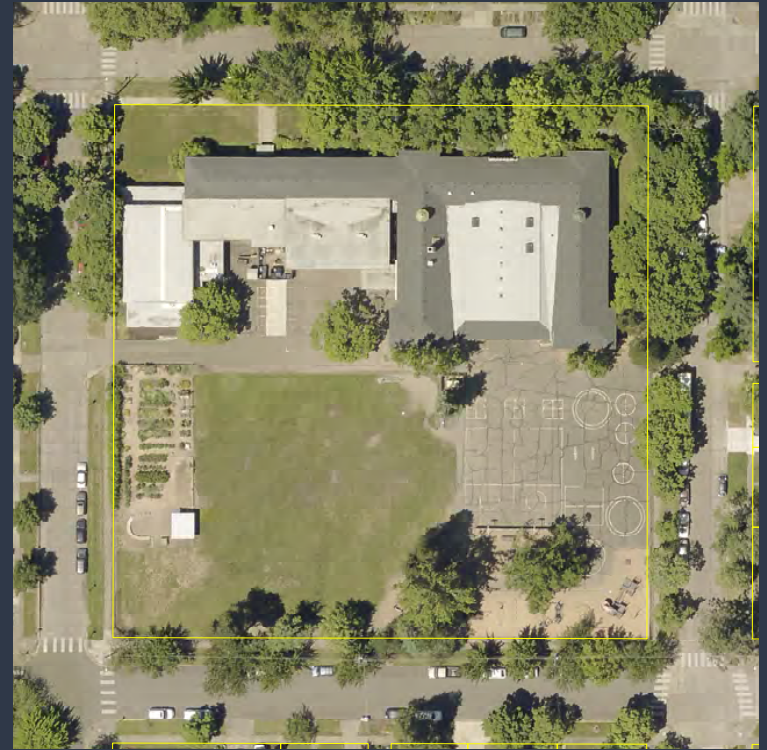


Edison School Building



SITE & STRUCTURE CONSIDERATIONS

- Oldest building in district (original portion built in 1926)
- Significant seismic concerns and accessibility issues
- School site is very small, 2.6 acres
- Nestled close within neighborhood
- Green space limited by small site
- Construction cannot be done with school in operation, so temporary school site is required



PUBLIC PROCESSES: THE ROAD SO FAR

- **2016–2017:** 4J Vision 20/20 Strategic Planning Process
- **2017–2018:** Long-Range Facilities Plan Update
- **2017–2018:** Bond Measure Development
- **Nov. 2018:** Green Light: Bond Election – 67% Yes Vote

PUBLIC PROCESSES: THE ROAD SO FAR

- **Jan.–April 2019:** Building User Experience Study
- **March–May:** How, Where & When: School Rebuild Plan
- **March–June:** School Design Vision & Values Development
- **June–August:** Edison Design Direction Discussion

HOW, WHERE & WHEN: PUBLIC PROCESS



rollment
 That would get the room
 re-located and back in
 permanent school. Also tables
 would give the amount of por
 needed a better right away.
 I like the idea Edison
 building but it is
 not safe and should
 be built in

less of order,
 students
 can't

Edison first - highest need.

Edison is a highly
 Dangerous building.
 No option makes
 sense just.

I am a Conser
 parent and of the
 agrees that Edison should go first
 for safety reasons.

Edison is an unsafe
 building it
 should be
 demolished
 and replaced
 with a new building.
 I don't want
 to see it built
 in the building.

Edison should go first
 with safety
 being the primary
 concern.

Edison should be built first
 please!

BP model
 is flawed. All
 children should
 attend their
 neighborhood school with
 supports.

Edison should be built first
 to ensure every child has a safe
 learning environment. Edison is
 classified as "Severely
 Unsafe".

Edison School should be built first
 to ensure every child has a safe
 learning environment. Edison is
 classified as "Severely
 Unsafe".

Edison should be built first
 for safety reasons!
 Come visit and you'll see why this is a urgent
 issue!

Build each school in 2 summers + 1 academic year
 (like Roosevelt) rather than 2 years

Edison 1st

Edison first, please!
 -oldest school in district
 -unsafe seismically yes! yes!
 Please have a program
 for behavior kids @ Edison

Edison needs to be built first
 for safety reasons!
 For many years, Edison
 has been at high risk.
 It's time to invest in
 the safety of our students.

I worry about
 the safety of my child
 going to school every day.
 Please support
 the investment in
 the safety of our students.

YES!!!

Raise

Edison 1st

HOW, WHERE & WHEN: WHAT WE HEARD

NO RELOCATION: Build the new Edison and Camas Ridge schools on their current sites.

SWING SCHOOL: Create a temporary school site

EDISON FIRST: Construct Edison first, then Camas

MAKE EDISON GREAT: Various views on design values

DESIGN VISION & VALUES: PUBLIC PROCESS






Consistency and
ibility

a clear and
ional layout

ty should support a
igenerational environment

ke wayfinding simple and
cessible

rovide access to
ommunication and
nformation (braille, visual/
audio announcements)

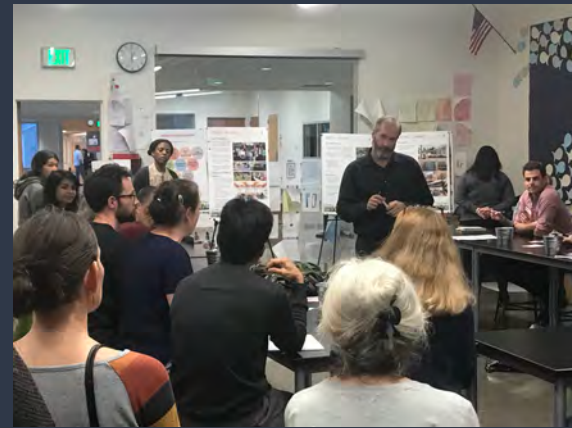


ADDITIONAL CONSIDERATIONS

- Equity**
 - Challenge the status quo of space use and access
 - Consider the needs of all users
 - Make sure all users are included from all ages and abilities
- Parking Lot**
 - Consider the needs of all users
 - Consider the needs of all users

For how things that house special programs, provide appropriate spaces for specialized needs.

WE ARE HERE TO LISTEN TO YOUR VOICES



SCHOOL DESIGN VISION & VALUES: WHAT WE HEARD

- Learning environments nurture achievement, inspire growth, foster creativity.
- Buildings foster warm and inviting feelings while prioritizing safety.
- Buildings empower students, promote inclusion and equity, and provide safe and welcoming environments that meet diverse needs.
- Spaces promote mental and physical health.
- Buildings are welcoming and support the community.
- Buildings are adaptable and flexible.
- Buildings connect students to nature.
- School facilities have low environmental impact.

HONORING THE PAST: STRUCTURE & DESIGN

- Edison is 4J's oldest existing school building. Potential approaches to honor this history include historic displays (as done in other recent school rebuilds) and/or preservation of some elements in situ or repurposed in the new building.
- The district has heard advocacy from some community members to retain part of the original brick building façade. The district undertook a structural engineering study and confirmed a partial façade preservation could be technically possible, with significant expense, design limitations, opportunity costs, and potential risk to trees.
- Community input was sought on the importance of partially preserving some original building elements among other values for school design.

EDISON DESIGN DIRECTION: WHAT WE'VE HEARD (IN A NUTSHELL)

- Design the best school possible for students' education
- Fit the neighborhood in scale and design
- Honor nature and green space
- Consider ways to acknowledge the school's history, but not at the expense of other school design priorities
- Northwest & traditional design approaches well-received; more contemporary design approach is not popular

EDISON DESIGN PRIORITIES: WHAT WE HEARD

WE ASKED: How important is each of these values?

- Designed for 21st Century Education
- Seismic Safety & Security
- Reflects Historic Character
- Preserves Some Historic Elements
- Neighborhood Fit & Feel
- Outdoor Green Space
- Cost Efficiency

EDISON DESIGN PRIORITIES: WHAT WE HEARD

COMMUNITY INPUT: Order of importance

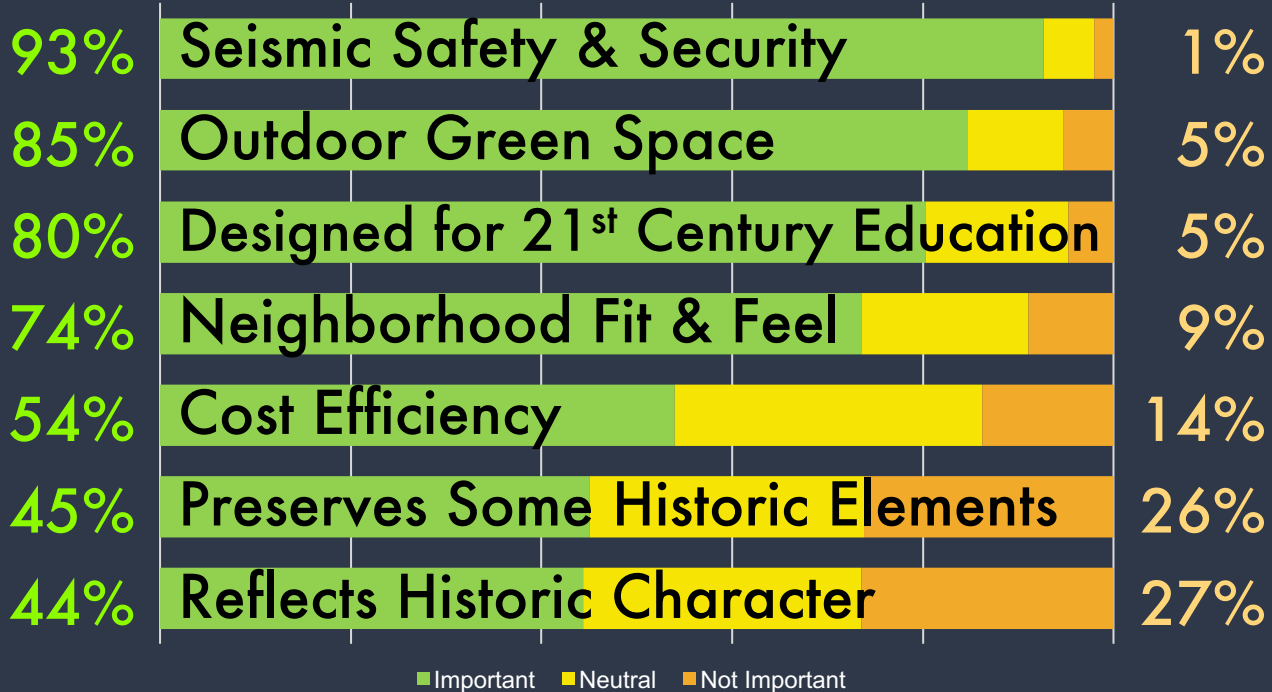
- Seismic Safety & Security
- Outdoor Green Space
- Designed for 21st Century Education
- Neighborhood Fit & Feel
- Cost Efficiency
- Preserves Some Historic Elements
- Reflects Historic Character

EDISON DESIGN PRIORITIES: WHAT WE HEARD

IMPORTANT
(very or somewhat)

COMMUNITY INPUT:

NOT IMPORTANT
(very or somewhat)



HONORING THE PAST: POTENTIAL APPROACHES

HISTORIC DISPLAYS: Honor building's history with photographic and material displays.

INTERPRETIVE PRESERVATION: Save and relocate some historical elements or artifacts into the building—e.g., repurpose bricks or reuse/rebuild the historic arched entry inside the building.



HONORING THE PAST: POTENTIAL APPROACHES

PARTIAL PRESERVATION: Preserve and incorporate a portion of the existing facade into the new building exterior.



HONORING THE PAST: WHAT WE HEARD



INTERPRETIVE PRESERVATION:

Save and relocate some historical elements or artifacts into the building.

56% Like



PARTIAL PRESERVATION: Preserve and incorporate a portion of the existing facade into the new building exterior.

33% Like



NEIGHBORHOOD FIT: POTENTIAL DESIGN APPROACHES

CONTEMPORARY STYLE: New building with contemporary character.



NEIGHBORHOOD FIT: POTENTIAL DESIGN APPROACHES

TRADITIONAL STYLE: Design new building with historic character. Could range from faux-historic to modern, using classic materials such as brick.



NEIGHBORHOOD FIT: POTENTIAL DESIGN APPROACHES

NORTHWEST STYLE: Design building with Northwest character: a regional, rather than purely historic approach to building character.



POTENTIAL DESIGN STYLE: WHAT WE HEARD

Northwest
Style



62% Like



Traditional
Style



52% Like



Contemporary
Style



21% Like



EDISON DESIGN DIRECTION TO ARCHITECTS

- Design to fit neighborhood in scale, design, green space
- Consider traditional and northwestern design styles
- New school will not preserve portions of façade in situ
- Honor the building's history through interpretive preservation approach and/or historic displays
- Provide community updates during design process

TIMELINE

- August 2019: Hire architects (approve contract award)
- Fall 2019: Begin Edison schematic design process
- 2019–2020: Design and construct swing school
- June 2020: Move Edison to swing school
- 2020–2022: Construct new Edison
- Summer 2022: Move Edison to new building & move Camas Ridge to swing school



4J Bond Update:
EDISON ELEMENTARY SCHOOL
DESIGN DIRECTION

Eugene School Board • August 28, 2019

