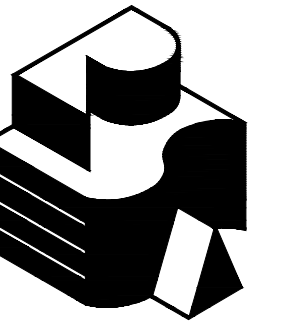


Multisite Roofing 2019

South Eugene High School and Kennedy Middle School

Eugene School District 4J Eugene, Oregon

C.I.P. #420.780.209



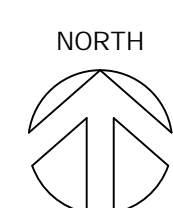
Robertson | Sherwood | Architects pc
132 EAST BROADWAY, SUITE 540
EUGENE, OREGON 97401
541-342-8077
www.robertsonsherwood.com



BASE BID A — SOUTH EUGENE HIGH SCHOOL
400 E 19th AVENUE
EUGENE, OREGON 97401

BASE BID B — KENNEDY MIDDLE SCHOOL & ALTERNATE NO. 1
2200 BAILEY HILL ROAD
EUGENE, OREGON 97405

A1 VICINITY MAP
A-001 NOT TO SCALE



PROJECT TEAM

OWNER
EUGENE PUBLIC SCHOOL DISTRICT 4J
715 W. 4th AVENUE
EUGENE, OREGON 97402
541-790-7417
541-790-7420 (FAX)

ARCHITECT
ROBERTSON/SHERWOOD/ARCHITECTS pc
132 E. BROADWAY, SUITE 540
EUGENE, OREGON 97401
541-324-8077
541-345-4302 (FAX)

SHEET INDEX

GENERAL
001 COVER SHEET, VICINITY MAP
002 SITE PLANS, SCOPE OF WORK, GENERAL NOTES, FASTENING SCHEDULE

ARCHITECTURAL
201 SOUTH EUGENE HIGH SCHOOL SCIENCE WING ROOF PLAN
211 SOUTH EUGENE HIGH SCHOOL SCIENCE WING DETAILS
301 KENNEDY MIDDLE SCHOOL ROOF PLAN, DETAILS

ABBREVIATIONS

AV	AIR VENTILATOR
BLKG	BLOCKING
B/O	BOTTOM OF
BTW	BETWEEN
BUR	BUILT-UP ROOF
CONT	CONTINUOUS
CNTRFLSHG	COUNTERFLASHING
¢	PENNY
DD	DOWNSPOUT DROP
(E)	EXISTING
EA	EACH
EQ	EQUAL
FLSHG	FLASHING
FPA	FALL PROTECTION ANCHOR
GA	GAGE
GALV	GALVANIZED
INSUL	INSULATION
LVL	LAMINATED VENEER LUMBER
MFR	MANUFACTURER
MIN	MINIMUM
MTL	METAL
(N)	NEW
NIC	NOT IN CONTRACT
N.T.S.	NOT TO SCALE
OC	ON CENTER
OS	OVERFLOW SCUPPER
PLYWD	PLYWOOD
POLYISO	POLYISOCYANURATE
PT	PRESSURE TREATED
PRE-FIN	PRE-FINISHED
PV	PLUMBING VENT STACK
RD	ROOF DRAIN
REQ'D	REQUIRED
RH	ROOF HATCH
SDS	SIMPSON STRONG-DRIVE SCREW
SHTHG	SHEATHING
SIM	SIMILAR
SM	SHEET METAL
SS	STAINLESS STEEL
TYP	TYPICAL
U.O.N.	UNLESS OTHERWISE NOTED
VERT	VERTICAL
W/	WITH

SYMBOLS

	KEYED NOTE REFERENCE
	DETAIL REFERENCE
	ELEVATION REFERENCE
	BUILDING SECTION REFERENCE

CODE INFORMATION

APPLICABLE CODE: 2014 OREGON STRUCTURAL SPECIALTY CODE, BASED ON 2012 INTERNATIONAL BUILDING CODE

OCCUPANCY: SCHOOL CLASSROOMS: E

CONSTRUCTION TYPES:
SOUTH EUGENE HIGH SCHOOL: TYPE V-1 HR, FULLY SPRINKLERED
KENNEDY MIDDLE SCHOOL: TYPE V-1 HR,

RE-BID

MULTISITE ROOFING 2019
EUGENE SCHOOL DISTRICT 4J
C.I.P. NO. 420-780-209

South Eugene High School
Kennedy Middle School

MARK	DATE	DESCRIPTION
------	------	-------------

ISSUE DATE: 2 MAY 2019
ISSUE: CONSTRUCTION DOCUMENTS
PROJECT NO: 1901
DRAWN BY: BDH
CHECKED BY: JMR
© ROBERTSON | SHERWOOD | ARCHITECTS PC 2019 ORIGINAL SHEET NO. 2000

COVER SHEET
VICINITY MAP

001

L:\Projects\2019\1901_41_Roofing_2019\05 Construction Documents\Re-Bid\02_Sheet Files\A-001-0901_General.dwg, Cover Sheet, 4/30/2019 11:03:39 AM

SCOPE OF WORK

SOUTH EUGENE HIGH SCHOOL SCIENCE WING

1. REFER TO ROOF PLAN ON SHEET 201. REFER TO E6/A211 FOR ROOF ASSEMBLY DETAIL.
2. REMOVE (2) LAYERS SINGLE PLY MEMBRANE.
3. PROTECT BOARD INSULATION TO REMAIN. NOTIFY ARCHITECT IF WET OR DAMAGED INSULATION IS DISCOVERED.
4. INSTALL FALL PROTECTION ANCHORS.
5. INSTALL NEW COVER BOARD, SINGLE-PLY ROOF, FLASHINGS, AND OTHER ITEMS AS DETAILED AND SPECIFIED.

KENNEDY MIDDLE SCHOOL

1. REFER TO ROOF PLAN ON SHEET 301.
2. EXISTING BUILT-UP ROOF TO REMAIN. CUT OUT BLISTERS AND OTHER DEFECTS IN AREA OF WORK. FILL VOIDS FROM CUTOUTS AND REPAIR VAPOR RETARDER WHERE DAMAGED.
3. INSTALL NEW PMMA FLASHING WHERE INDICATED

GENERAL NOTES

1. PROTECT EXISTING BUILDINGS, YARDS, AND ADJACENT ROOF SURFACES FROM DAMAGE AND DEBRIS. REPAIR DAMAGE OCCURRING DURING THE WORK.
2. BUILDING DIMENSIONS AND LOCATIONS OF ROOF PENETRATIONS ARE APPROXIMATE. VERIFY DIMENSIONS, LOCATIONS, AND QUANTITIES.
3. INSPECT ROOF SUBSTRATE FOR DECAY AND REPORT UNSATISFACTORY CONDITIONS TO ARCHITECT FOR REMEDY.
4. MAINTAIN TEMPORARY WATERPROOF COVERINGS UNTIL ROOFING IS COMPLETE.
5. REPAIR EXISTING CEILINGS AND LIGHT FIXTURES DAMAGED DURING TEAR-OFF AND REROOFING WORK.
6. VERIFY LOCATIONS OF STAGING AREAS WITH OWNER.
7. DETAILS SHOW MINIMUM REQUIREMENTS FOR ROOFING COMPONENTS. FOLLOW SELECTED MANUFACTURER'S REQUIREMENTS WHEN THEY EXCEED THESE MINIMUMS.
8. DISCONNECT ELECTRICITY IN CONDUITS AFFECTED BY THE WORK, INCLUDING POWER TO MECHANICAL UNITS. RECONNECT AND TEST OPERATION OF UNITS. ELECTRICAL WORK SHALL BE PERFORMED BY LICENSED ELECTRICAL CONTRACTOR.
9. AT CHANGES IN ROOF PLANE, EASE EDGES WITH CANT STRIPS AND TAPERED EDGE STRIPS.
10. USE SHORTEST POSSIBLE FASTENERS REQUIRED TO ACHIEVE MANUFACTURERS' RECOMMENDED PENETRATION.
11. MOBILE FALL PROTECTIONS DEVICES WITH PENETRATING SPIKES MAY NOT BE USED.

FASTENING SCHEDULE

METAL FLANGES AT AIR VENTS:

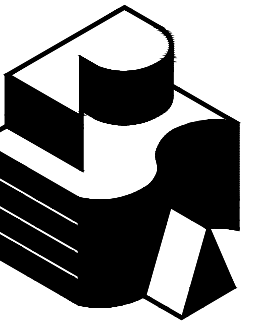
PRE-FINISHED SHEET METAL SKIRTS AT EXHAUST FANS:

PRE-FINISHED FLASHING AND COUNTERFLASHING:

LARGE HEAD HOT DIPPED 12 GA GALV ROOFING NAILS AT 4" O/C

PRE-FINISHED SHEET METAL SCREWS WITH NEOPRENE WASHERS AT 8" O/C; MINIMUM 2 FASTENERS PER SIDE.

PRE-FINISHED SHEET METAL SCREWS WITH NEOPRENE WASHERS AT 24" O/C



Robertson | Sherwood | Architects PC
132 EAST BROADWAY, SUITE 540
EUGENE, OREGON 97401
541-342-8077
www.robertsonsherwood.com



RE-BID

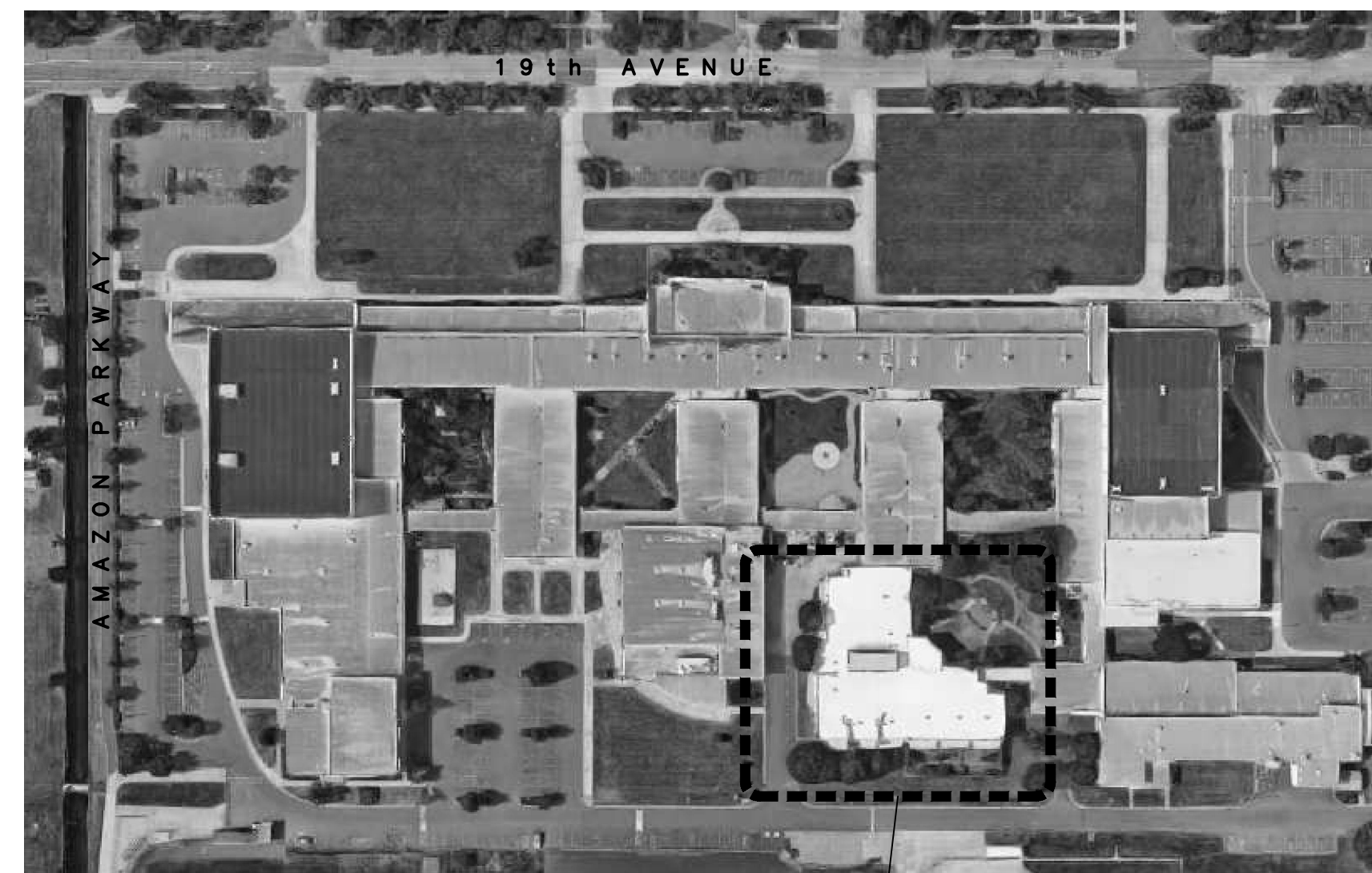
**MULTISITE ROOFING 2019
EUGENE SCHOOL DISTRICT 4J
C.I.P. NO. 420-780-209**

South Eugene High School
Kennedy Middle School

MARK	DATE	DESCRIPTION
------	------	-------------

ISSUE DATE:	2 MAY 2019
ISSUE:	CONSTRUCTION DOCUMENTS
PROJECT NO:	1901
DRAWN BY:	BDH
CHECKED BY:	JMR
© ROBERTSON SHERWOOD ARCHITECTS PC 2019 ORIGINAL SHEET SIZE: 24"X36"	

SITE PLANS
SCOPE OF WORK
GENERAL NOTES
FASTENING SCHEDULE



SCIENCE WING / AREA OF WORK
(BASE BID PACKAGE "A")

SOUTH EUGENE HIGH SCHOOL SITE PLAN

A3
002

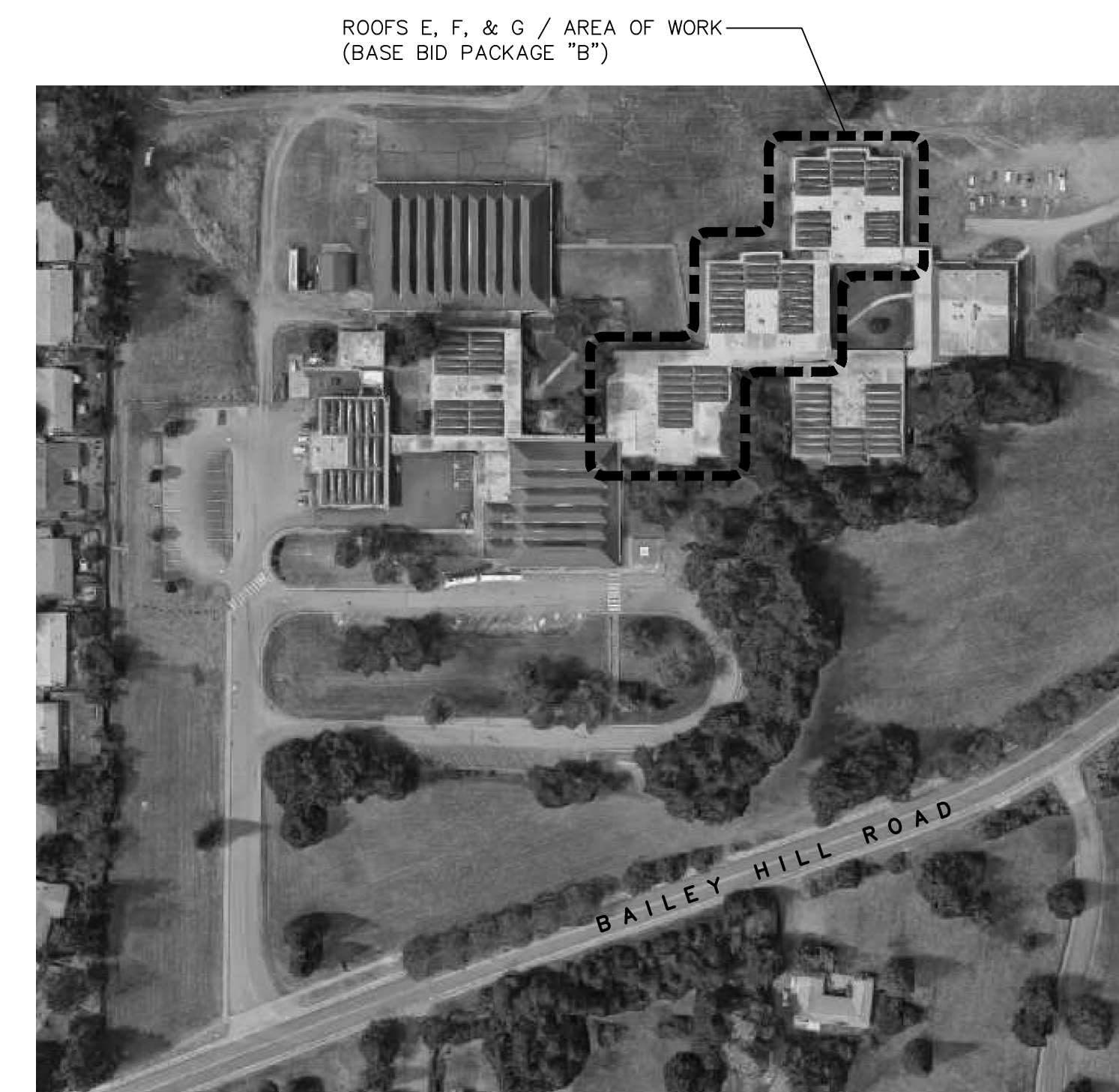
NOT TO SCALE

400 E 19th AVENUE, EUGENE, OREGON 97401

NORTH



BASE BID PACKAGE "A"



ROOFS E, F, & G / AREA OF WORK
(BASE BID PACKAGE "B")

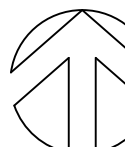
KENNEDY MIDDLE SCHOOL SITE PLAN

A5
002

NOT TO SCALE

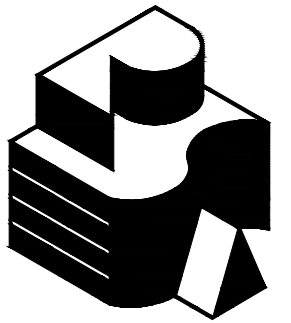
2200 BAILEY HILL ROAD
EUGENE, OREGON 97405

NORTH

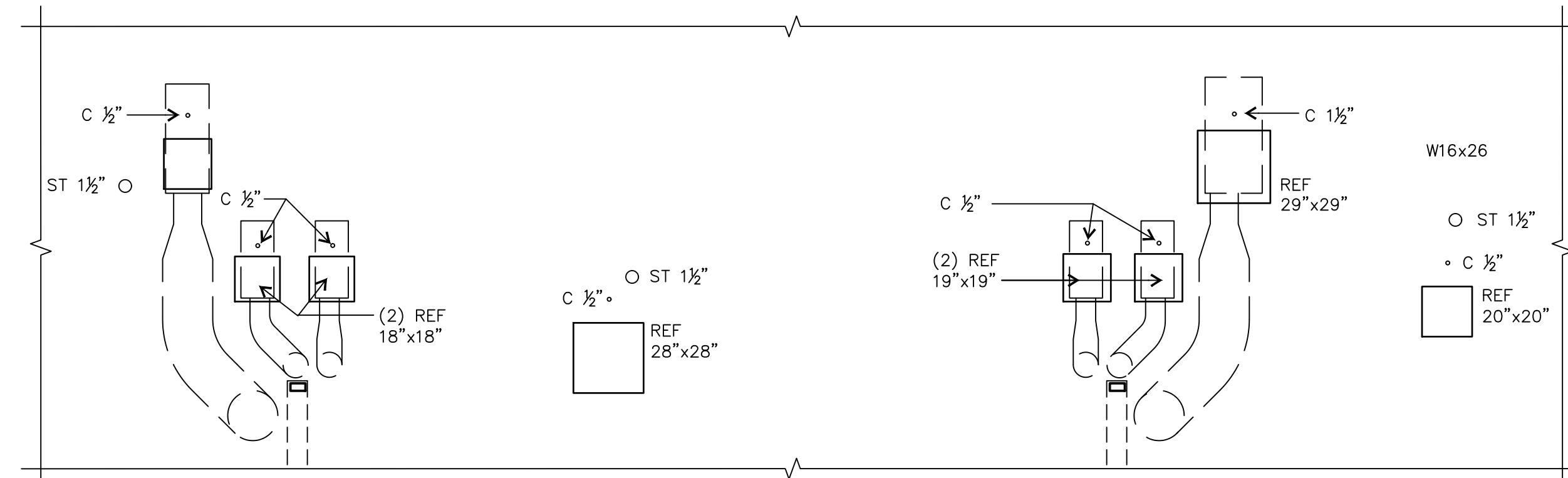


BASE BID PACKAGE "B"

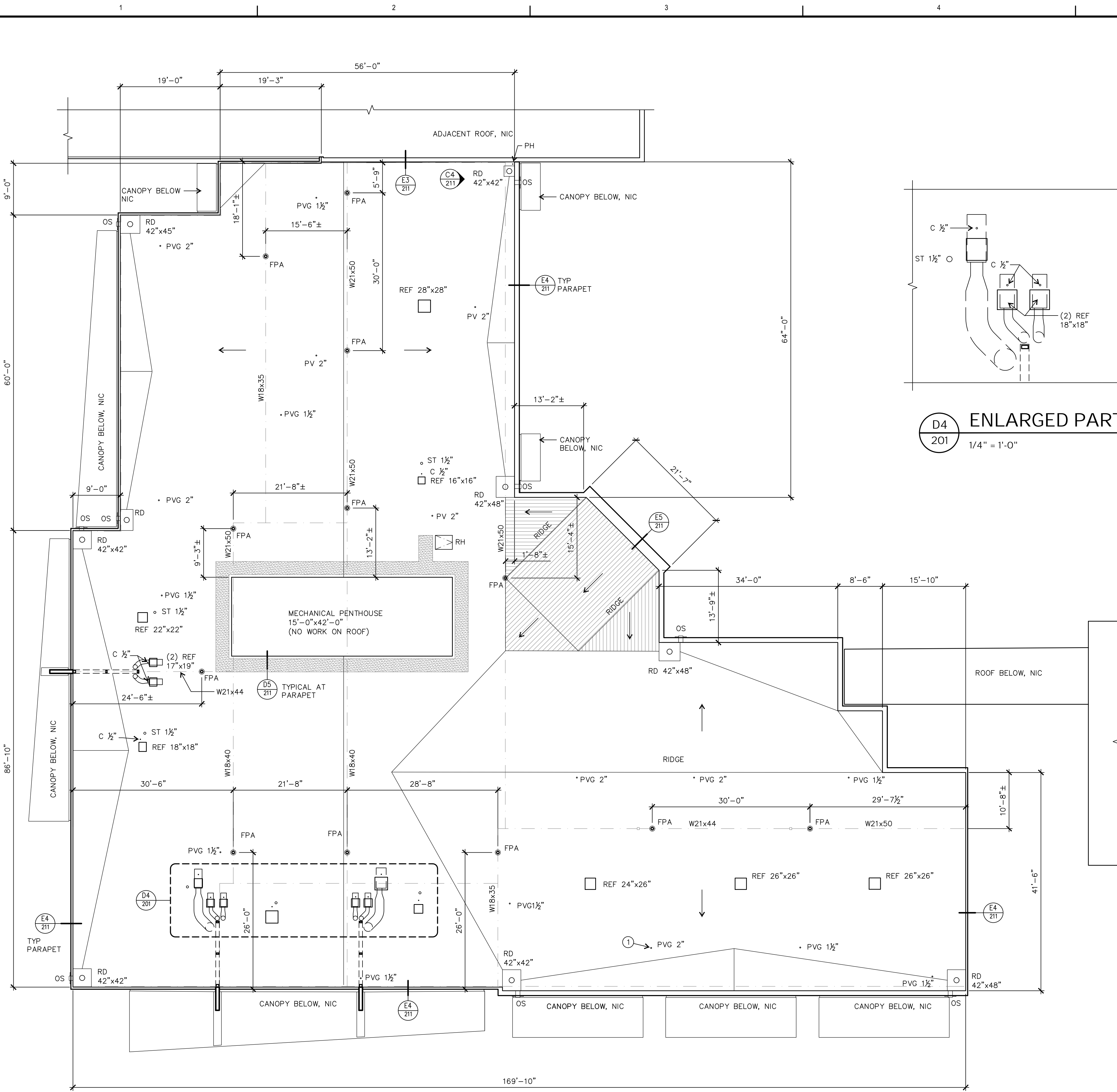
002



Robertson | Sherwood | Architects PC
132 EAST BROADWAY, SUITE 540
EUGENE, OREGON 97401
541-342-8077
www.robertsonsherwood.com



D4
201 ENLARGED PARTIAL ROOF PLAN
1/4" = 1'-0"



GENERAL NOTES REFER ALSO TO GENERAL NOTES ON SHEET 002

- SEE **E6** FOR TYPICAL ROOF ASSEMBLY
- REMOVE EXISTING TPO SINGLE PLY MEMBRANE, EPDM SINGLE PLY MEMBRANE, AND MEMBRANE FLASHINGS. EXISTING 2 1/2\"/>
- NOTIFY ARCHITECT IF WET OR DAMAGED INSULATION IS DISCOVERED DURING DEMOLITION.
- ROOF IS STRUCTURALLY SLOPED. EXISTING CRICKETS WERE FORMED WITH TAPERED INSULATION.

ROOF PLAN LEGEND

NOTE: SIZES OF ROOF PENETRATIONS AND CURBS INDICATED IN INCHES.

- HATCHING INDICATES STEEP SLOPED ROOF TO RECEIVE FULLY ADHERED MEMBRANE
- NEW WALKWAY PADS
- SLOPE

- C ELECTRICAL CONDUIT PENETRATION **D6** 211 SIM
- FPA FALL PROTECTION ANCHOR **A6** 211
- OS (E) OVERFLOW SCUPPER **A3** 211
- PV (E) PLUMBING VENT **D6** 211
- PVG (E) GLASS PLUMBING VENT **D6** 211
- RD (E) ROOF DRAIN **B5** 211
- REF (E) ROOF EXHAUST FAN **C6** 211
- RH (E) ROOF HATCH **A5** 211

W21x44 (ETC.) SIZE OF (E) WIDE FLANGE ROOF BEAM AT LOCATION OF FALL PROTECTION ANCHOR

KEYED NOTES

- REPLACE BROKEN GLASS PLUMBING VENT. PROVIDE GLASS PIPING, SIMILAR TO KIMAX TUBING BY SHOTT NORTH AMERICA A (WWW.US.SCHOTT.COM). REPLACE EXISTING COUPLING (KIMAX #6650 OR #6661) BELOW ROOF DECK IF REQUIRED FOR REPLACEMENT OF VENT PIPE.

RE-BID

MULTISITE ROOFING 2019
EUGENE SCHOOL DISTRICT 4J
C.I.P. NO. 420-780-209

Sheldon High School
South Eugene High School
Kennedy Middle School

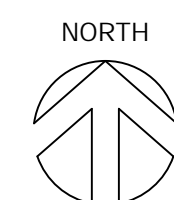
MARK DATE DESCRIPTION

ISSUE DATE: 2 MAY 2019
ISSUE: CONSTRUCTION DOCUMENTS
PROJECT NO: 1901
DRAWN BY: BDH
CHECKED BY: JMR
© ROBERTSON | SHERWOOD | ARCHITECTS PC 2019 ORIGINAL SHEET SIZE: 36\"/>

SOUTH EUGENE HIGH SCHOOL
SCIENCE WING ROOF PLAN

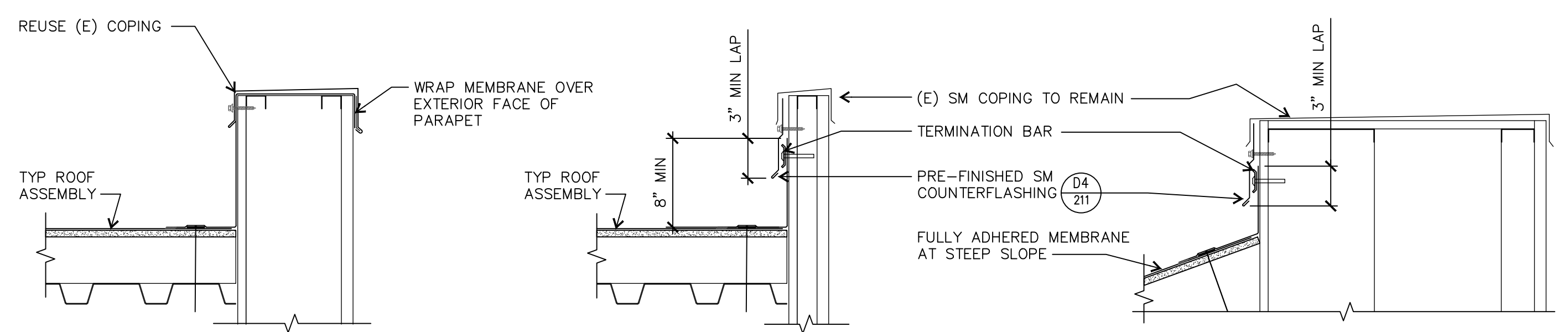
BASE BID PACKAGE A

A1
201 SOUTH EUGENE HIGH SCHOOL SCIENCE WING ROOF PLAN
1" = 10'-0"



201

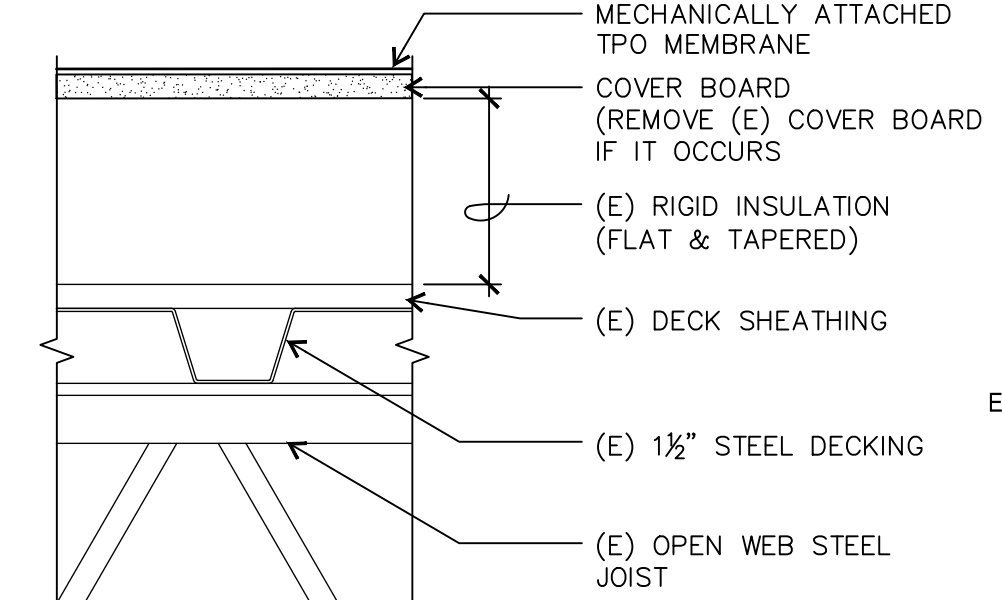
L:\Projects\2019\1901_41 Roofing 2019\05 Construction Documents\Re-Bid\02 Sheet Files\A-211-0901 SEHG Details.dwg Details 4/30/2019 11:04:28 AM



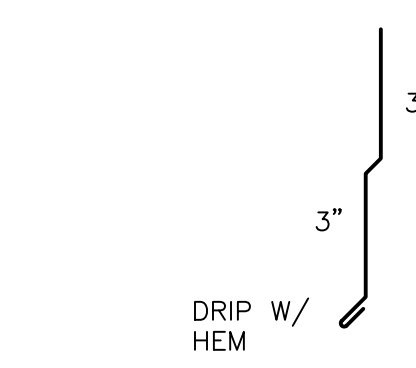
E3
211
ROOF AT N. PARAPET
1-1/2" = 1'-0"

E4
211
TYP ROOF AT PARAPET
1-1/2" = 1'-0"

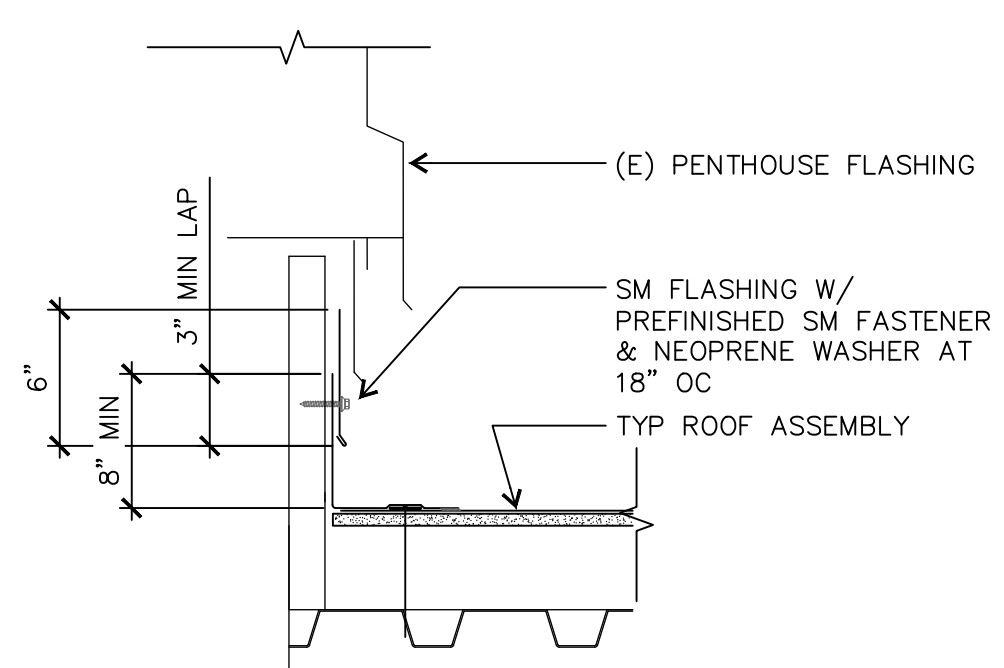
E5
211
ROOF AT PARAPET
1-1/2" = 1'-0"



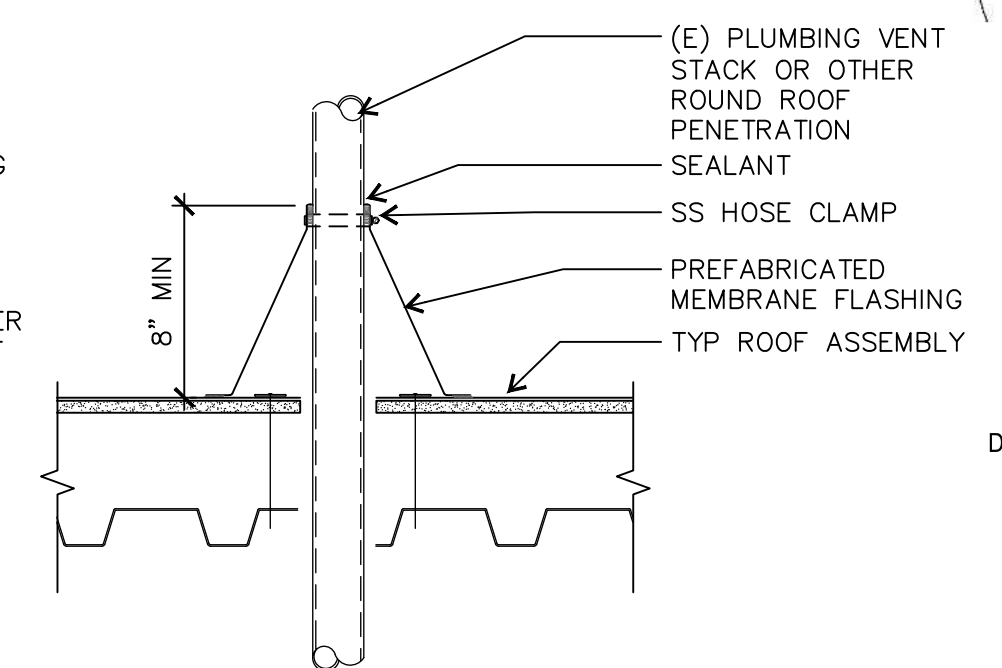
E6
211
TYP ROOF ASSEMBLY
3" = 1'-0"



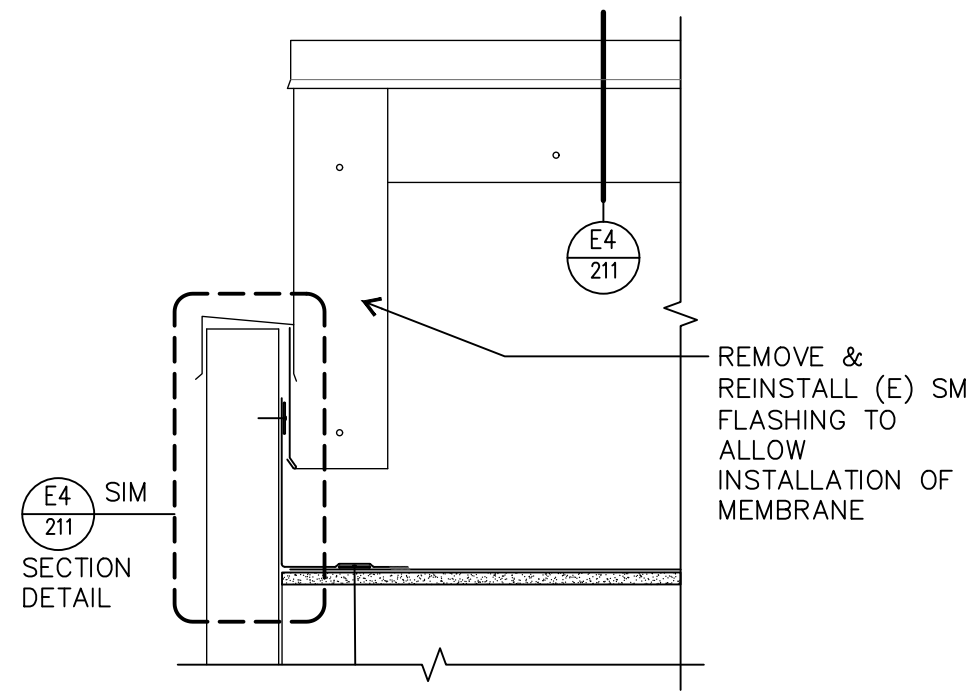
D4
211
COUNTERFLASHING
3" = 1'-0"



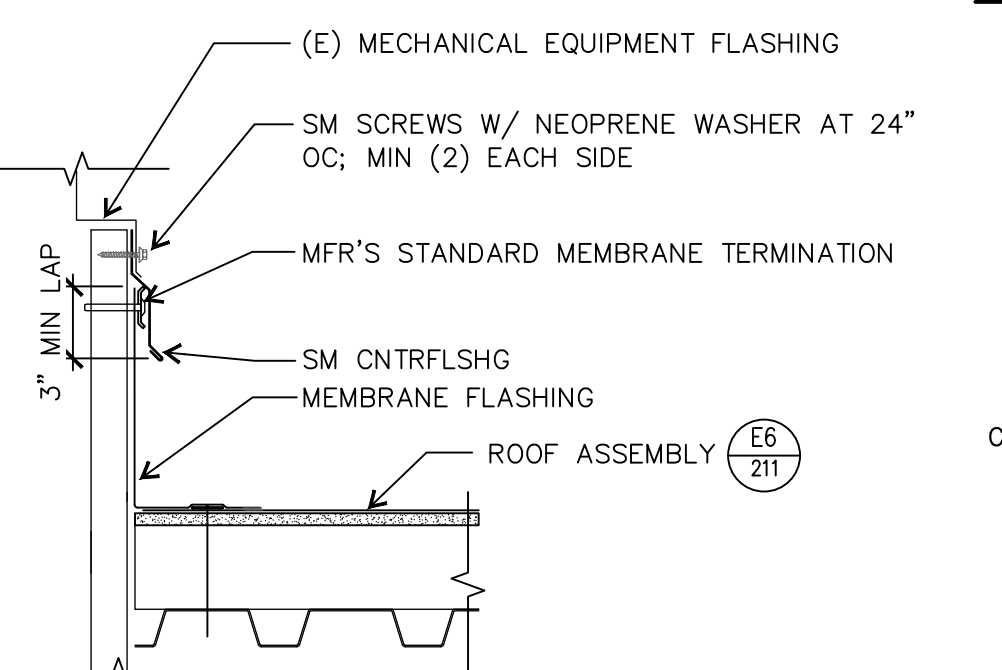
D5
211
ROOF AT PENTHOUSE
1-1/2" = 1'-0"



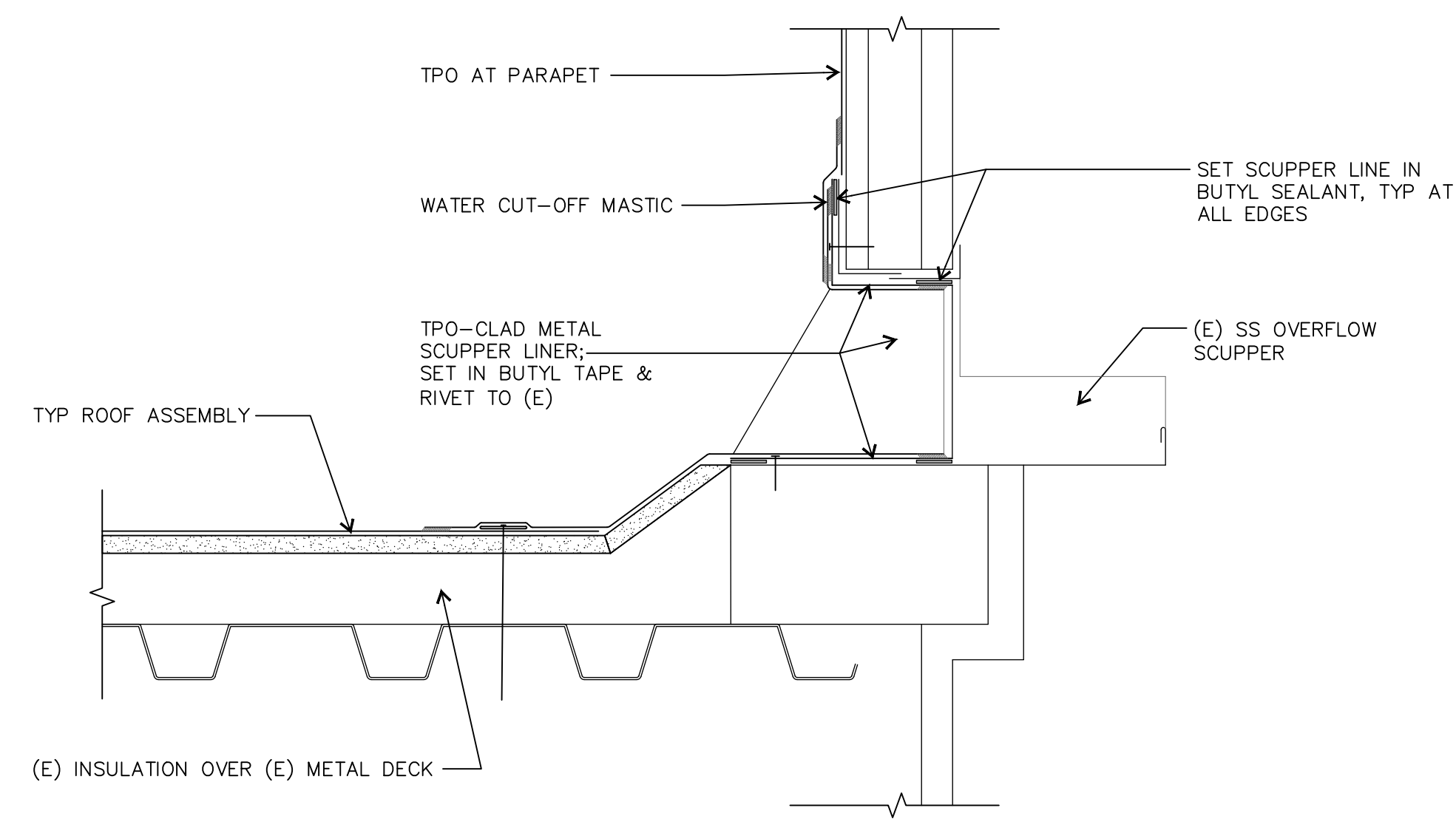
D6
211
ROUND PENETRATION
1-1/2" = 1'-0"



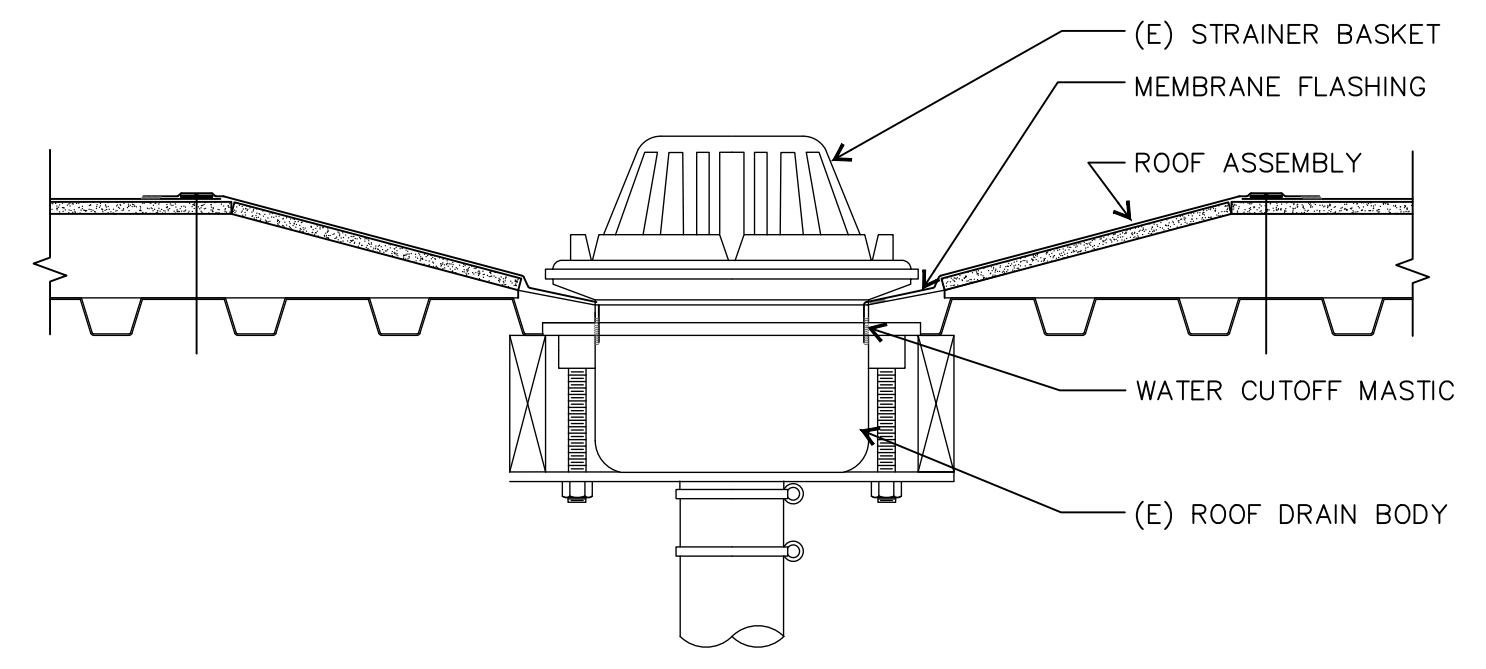
C4
211
ELEVATION AT END OF PARAPET
1-1/2" = 1'-0"



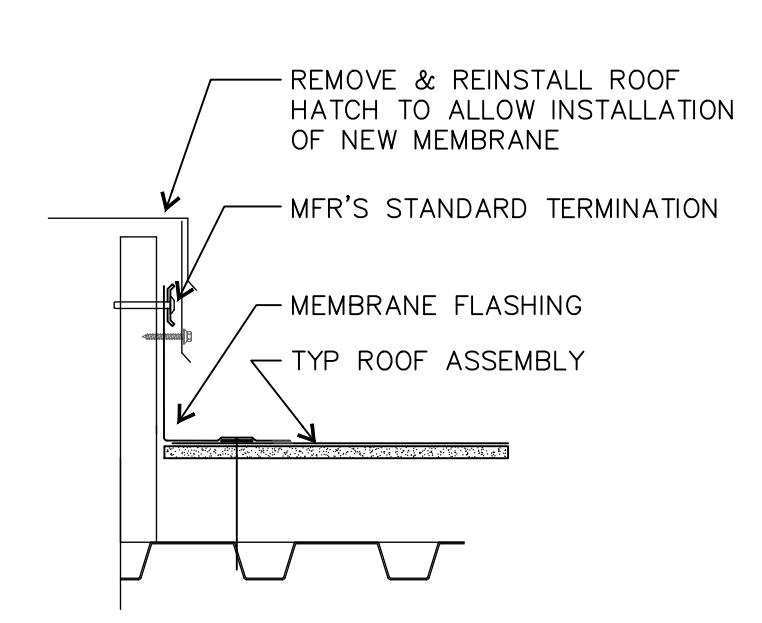
C6
211
FLASHING AT REF
1-1/2" = 1'-0"



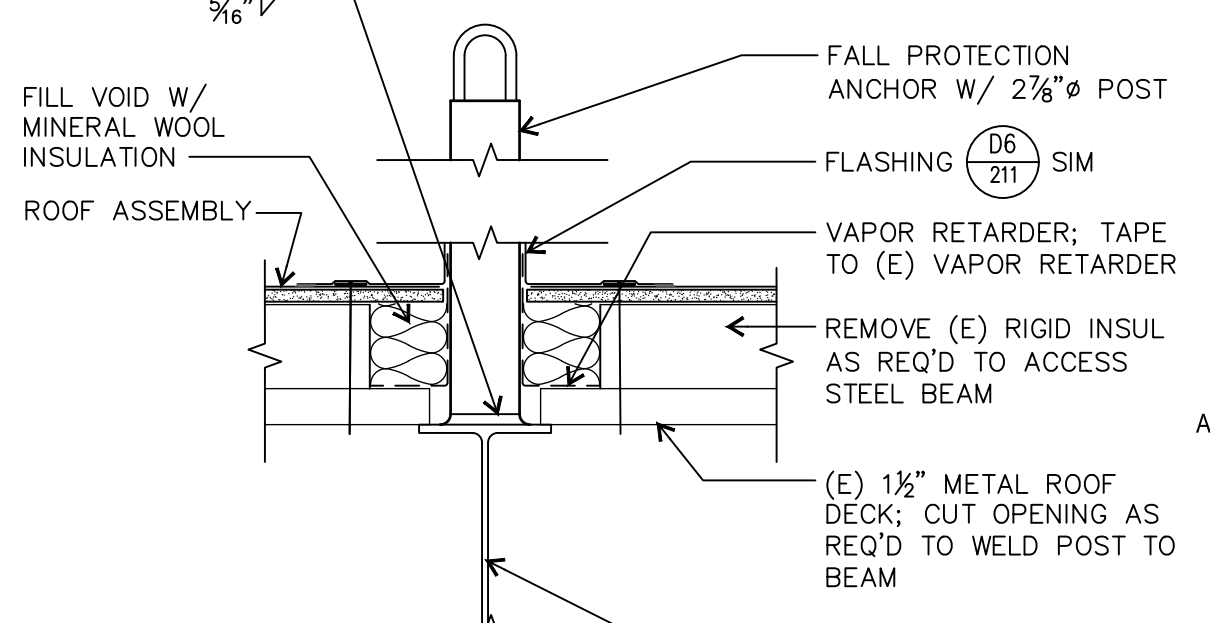
A3
211
OVERFLOW SCUPPER
3" = 1'-0"



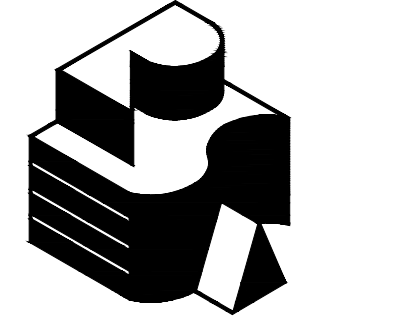
B5
211
ROOF DRAIN
1-1/2" = 1'-0"



A5
211
ROOF HATCH
1-1/2" = 1'-0"



A6
211
FPA
1-1/2" = 1'-0"



Robertson | Sherwood | Architects PC
132 EAST BROADWAY, SUITE 540
EUGENE, OREGON 97401
541-342-8077
www.robertsonsherwood.com



RE-BID

MULTISITE ROOFING 2019
EUGENE SCHOOL DISTRICT 4J
C.I.P. NO. 420-780-209
Sheldon High School
South Eugene High School
Kennedy Middle School

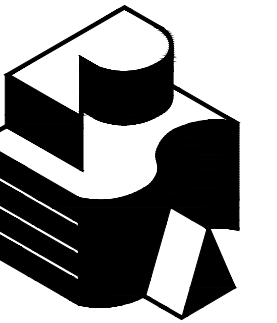
MARK	DATE	DESCRIPTION

ISSUE DATE: 2 MAY 2019
ISSUE: CONSTRUCTION DOCUMENTS
PROJECT NO: 1901
DRAWN BY: BDH
CHECKED BY: JMR
© ROBERTSON | SHERWOOD | ARCHITECTS PC 2019 ORIGINAL SHEET SIZE: 34" x 46"

SOUTH EUGENE HIGH SCHOOL DETAILS
BASE BID PACKAGE A

211

L:\Projects\2019\1901_41 Roofing 2019\05 Construction Documents\Re-Bid\02 Sheet Files\A-301-0901 Kennedy Planning Roof Plan - Kennedy, 4/30/2019 11:04:41 AM



Robertson | Sherwood | Architects PC
132 EAST BROADWAY, SUITE 540
EUGENE, OREGON 97401
541-342-8077
www.robertsonsherwood.com

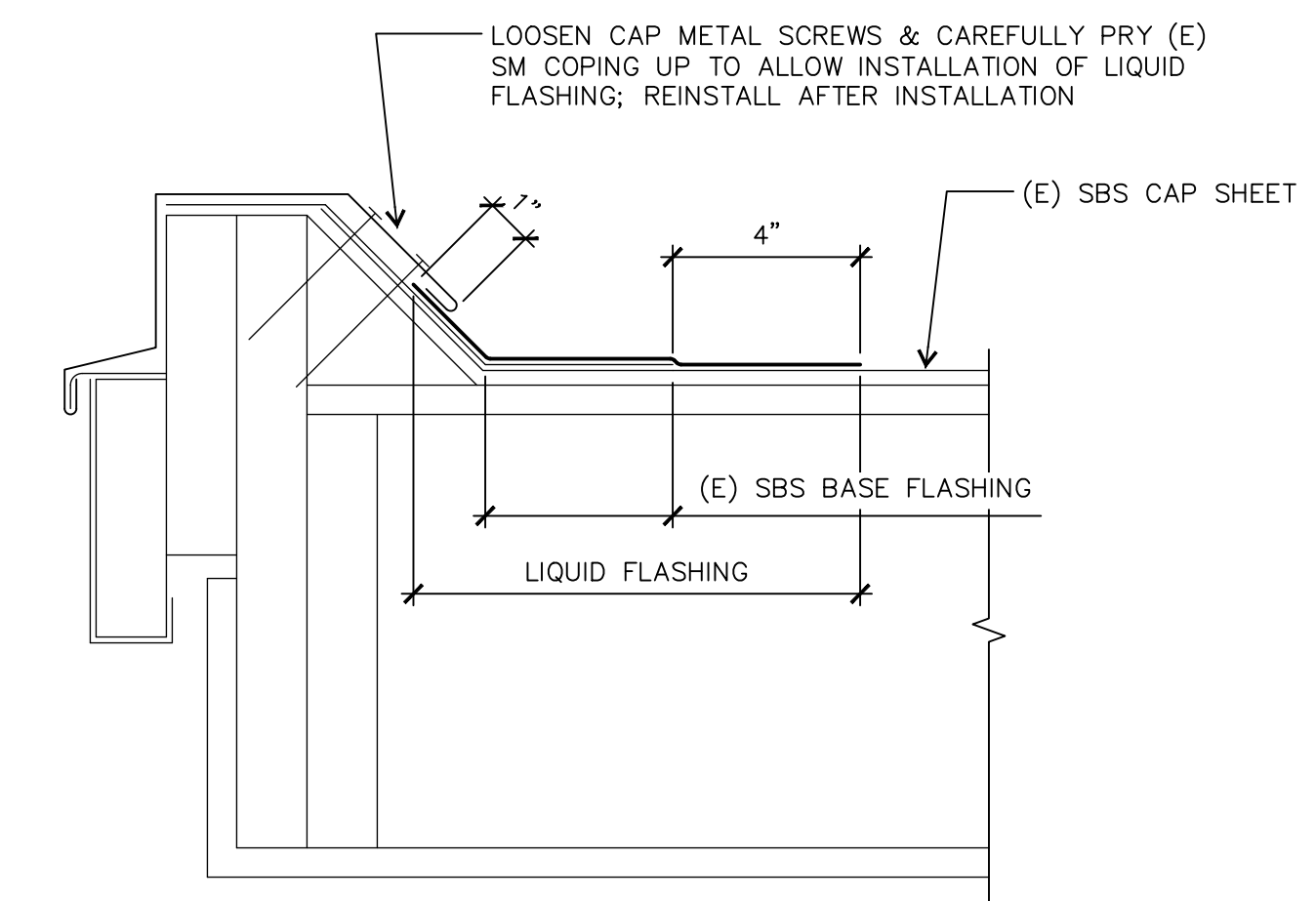
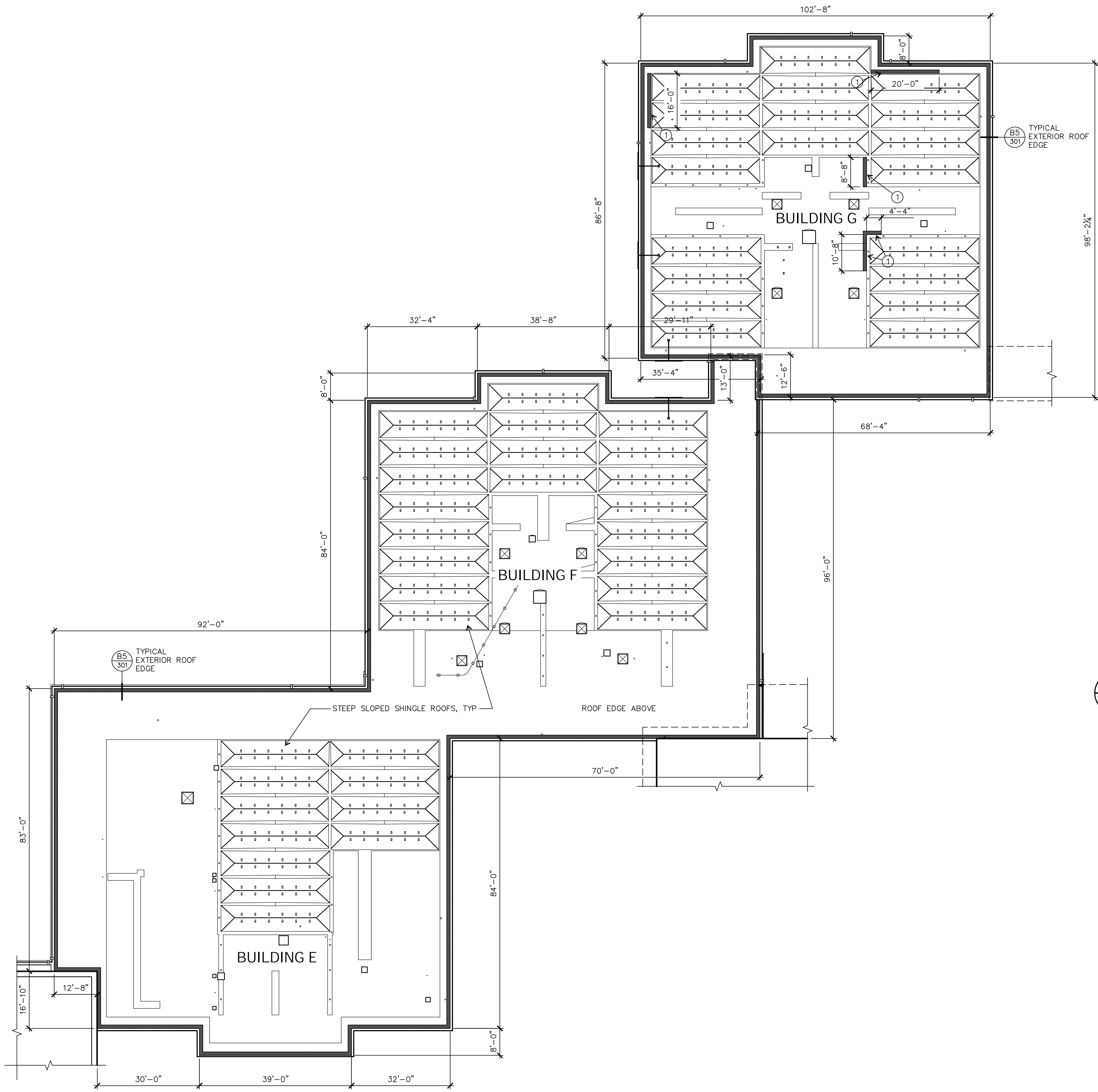


ROOF PLAN LEGEND

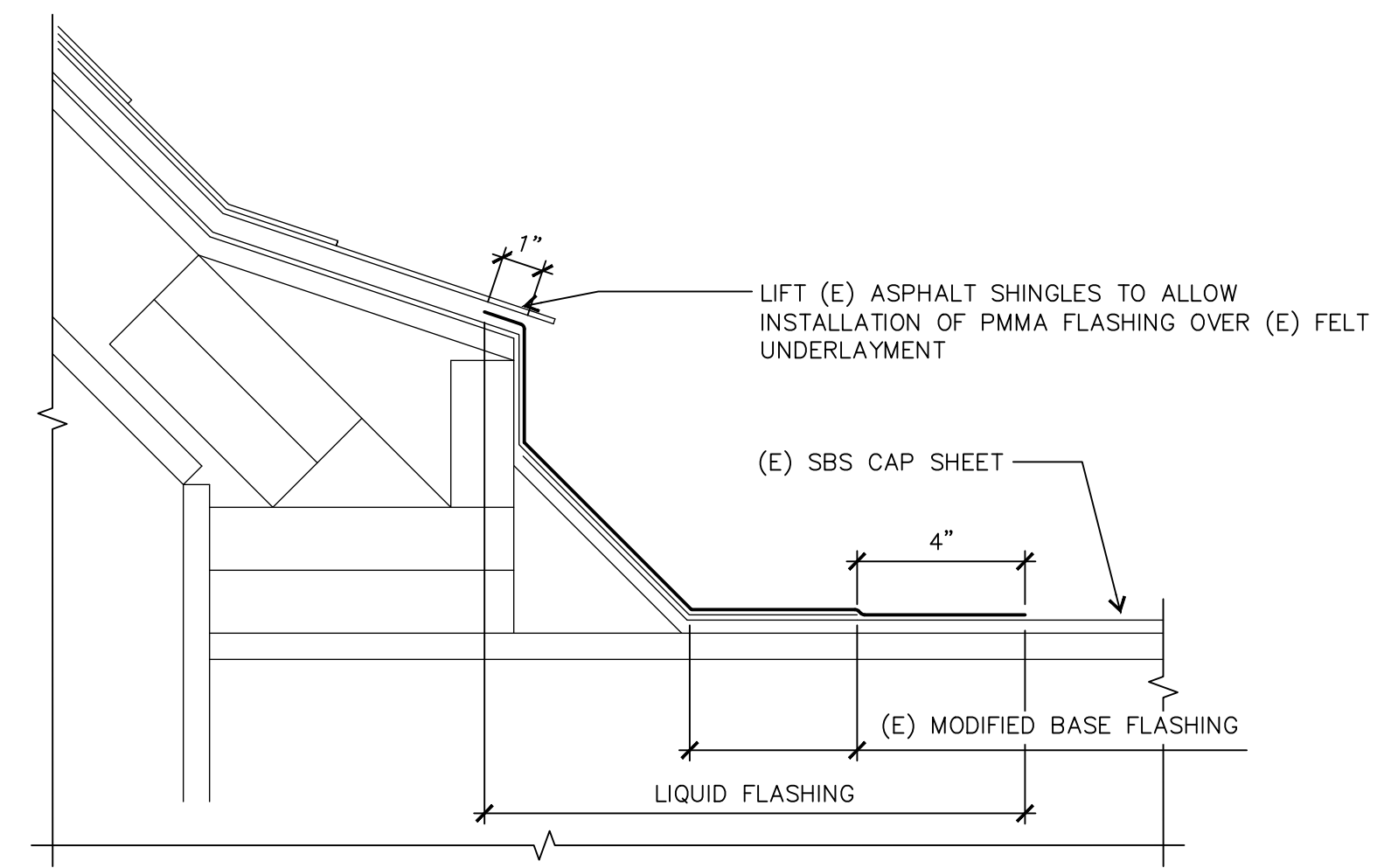
PMMA OVERLAY (SPECIFIED IN SECTION 07 54 23)

KEYED NOTES

① SLOPED ROOF EDGE; SEE (A5 301)

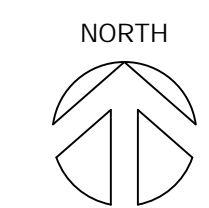


(B5 301) EXTERIOR ROOF EDGE
3" = 1'-0"



(A5 301) SLOPED ROOF EDGE
3" = 1'-0"

(A1 301) KENNEDY MIDDLE SCHOOL ROOF PLAN
1/16" = 1'-0"



RE-BID

MULTISITE ROOFING 2019
EUGENE SCHOOL DISTRICT 4J
C.I.P. NO. 420-780-209

Sheldon High School
South Eugene High School
Kennedy Middle School

MARK DATE DESCRIPTION

ISSUE DATE: 2 MAY 2019
ISSUE: CONSTRUCTION DOCUMENTS
PROJECT NO: 1901
DRAWN BY: BDH
CHECKED BY: JMR
© ROBERTSON | SHERWOOD | ARCHITECTS PC 2019 ORIGINAL SHEET NOS. 0900P

KENNEDY MIDDLE SCHOOL
ROOF PLAN & DETAILS
BASE BID PACKAGE B
& ALTERNATE NO. 1

301