

General Notes:

1. The drawing is to be used for general information. Contractor to verify existing site conditions and all building window sections / dimensions.
2. Work to be conducted in accordance with all state and local fire codes.
3. Abatement contractor to use "non-friable methods" for window frames / putty / glazing removal.
4. Abatement contractor to dispose of all window frames / putty / glazing as asbestos waste.
5. Abatement contractor to follow the OSHA Lead in Construction standard.
6. Paint chip samples from various windows at SEHS were sampled for lead content. Lead was detected ranging from 91 parts per million (ppm) to 1,600 ppm. The EPA and HUD define lead-based paint as paint which contains 5,000 ppm or greater. OSHA states that any lead concentration of paint that may become airborne during construction operations trigger requirements in the OSHA Lead in Construction Standards.
7. Asbestos contractor to coordinate window removal timelines with window installation contractor, which is responsible for securing window openings after each window section removal.

Abatement Notes:

Indicates areas of window sections to be removed along with all associated sealant on building surface around the outside of the window frames as indicated on the drawing.

Abatement Schedule / Sequence:

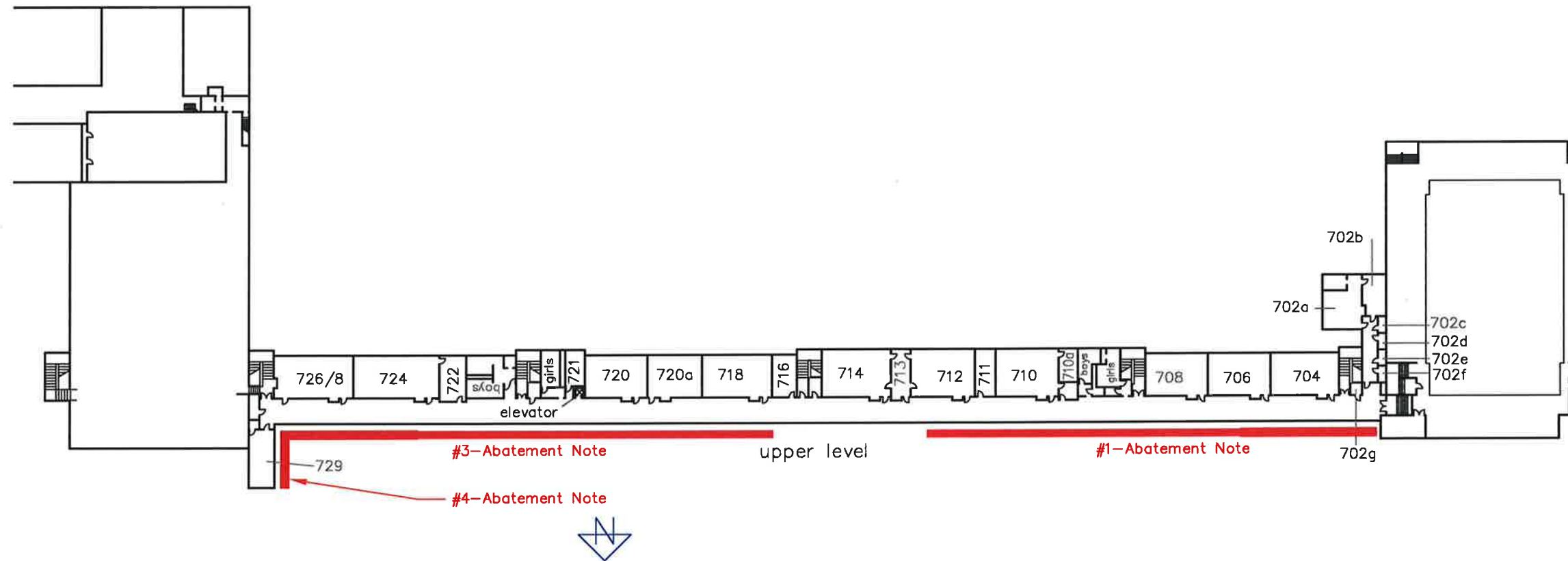
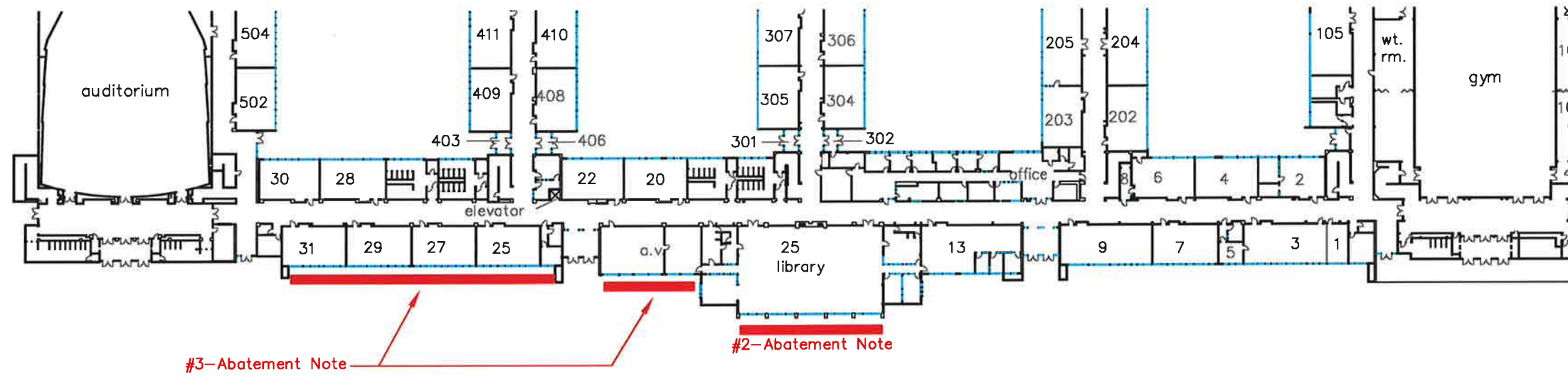
1. Front Of School - Upper Hall Window Frame, Glazing and Putty Removal. Start on west end and work east to Library.
2. Front Of School - Library Window Frame, Glazing and Putty Removal. Start on west side and work east.
3. Front Of School - Upper Hall & Lower Classroom Window Frame, Glazing and Putty Removal to proceed simultaneously. Start on west side and work east. Finish with classroom #729.

Start: June 24, Finish: July 16
Substantial Completion: July 16

Abatement Notes:

Build a 4 ml. poly enclosure on the inside of each window section to contain any debris from being tracked from the removal area.

Remove and dispose of all window assemblies along with all associated window sealant on building surface around the outside of the window frames as indicated on the drawing.



Facilities Management
School District 4J
715 W. 4th Avenue
Eugene, OR 97402
(541) 790-7400

SOUTH EUGENE HIGH SCHOOL
400 EAST 19th AVENUE 97401
541-790-8000

DATE: 03-11-2019

DRAWN BY D. Lemonds

SHEET

A-1