

Project: River Road Elementary School – Bus Loop
Title: Addendum No. 2
Contract No: CIP 410 307 001
Date: July 27, 2018
From: John Stapleton, PIVOT Architecture
To: Interested Bidders

This Addendum is available at <http://www.4j.lane.edu/bids/> and modifies the Project Manual, Specifications, and Drawings in accordance with the Invitation to Bid and the Instructions to Bidders as follows:

1-1-0 General Information

- 1-1-1 CHANGE bid date from Tuesday, July 31st at 2PM to Wednesday, August 1st at 2PM.
- 1-1-2 This Addendum is intended to answer Bidder questions received by the District. See Item 1-5.

1-2-0 Changes to the Project Manual

NONE

1-3-0 Changes to the Drawings

- 1-3-1 Sheet C1.1 – Change the area of demolished paving at the north end of the drive.
- 1-3-2 Sheet C2.0 – Added paving at the north end of drive.
- 1-3-3 Sheet C4.0 – Change to Grading Plan at north end of drive.

1-4-0 Substitution Requests

NONE

1-5-0 Bidder Questions

- 1-5-1 Bidder had a question about the extent of the sand finish. Sand finish will end at the tree well where the existing concrete walk is cut. No sand finish at the new sidewalk, light broom finish.
- 1-5-2 Question: What is Note 2A intended to indicate?
Answer: Note 2a is located where the curb transitions to a flush curb on the bus lane entrance on Marion lane.
- 1-5-3 Question: Note 6, with the truncated domes on the radius, are you wanting domes cut so match the radius or best fit the 2'x5'?
Answer: Cut or fabricated to match radius.

1-5-4 Question: Note 13 at the top match point doesn't show any asphalt patch. Is the intent to have a small asphalt patch directly on top of the edge of asphalt or would you have more asphalt removed for an approach panel?

Answer: See revised Sheets C1.1, C2.0, and C4.0.

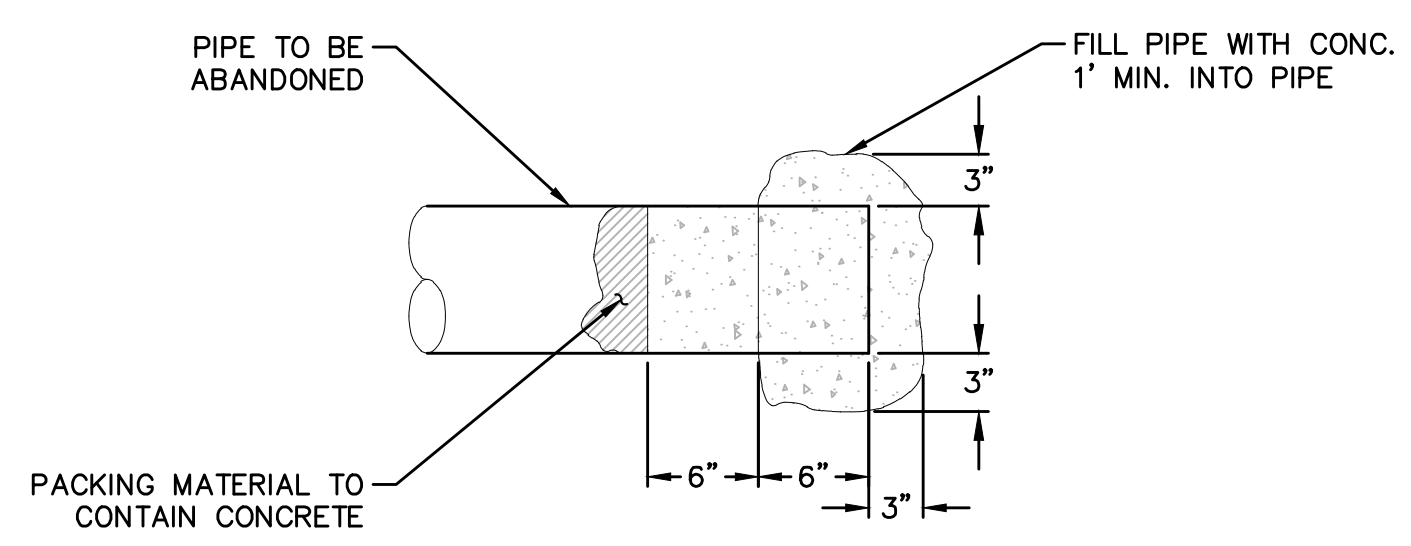
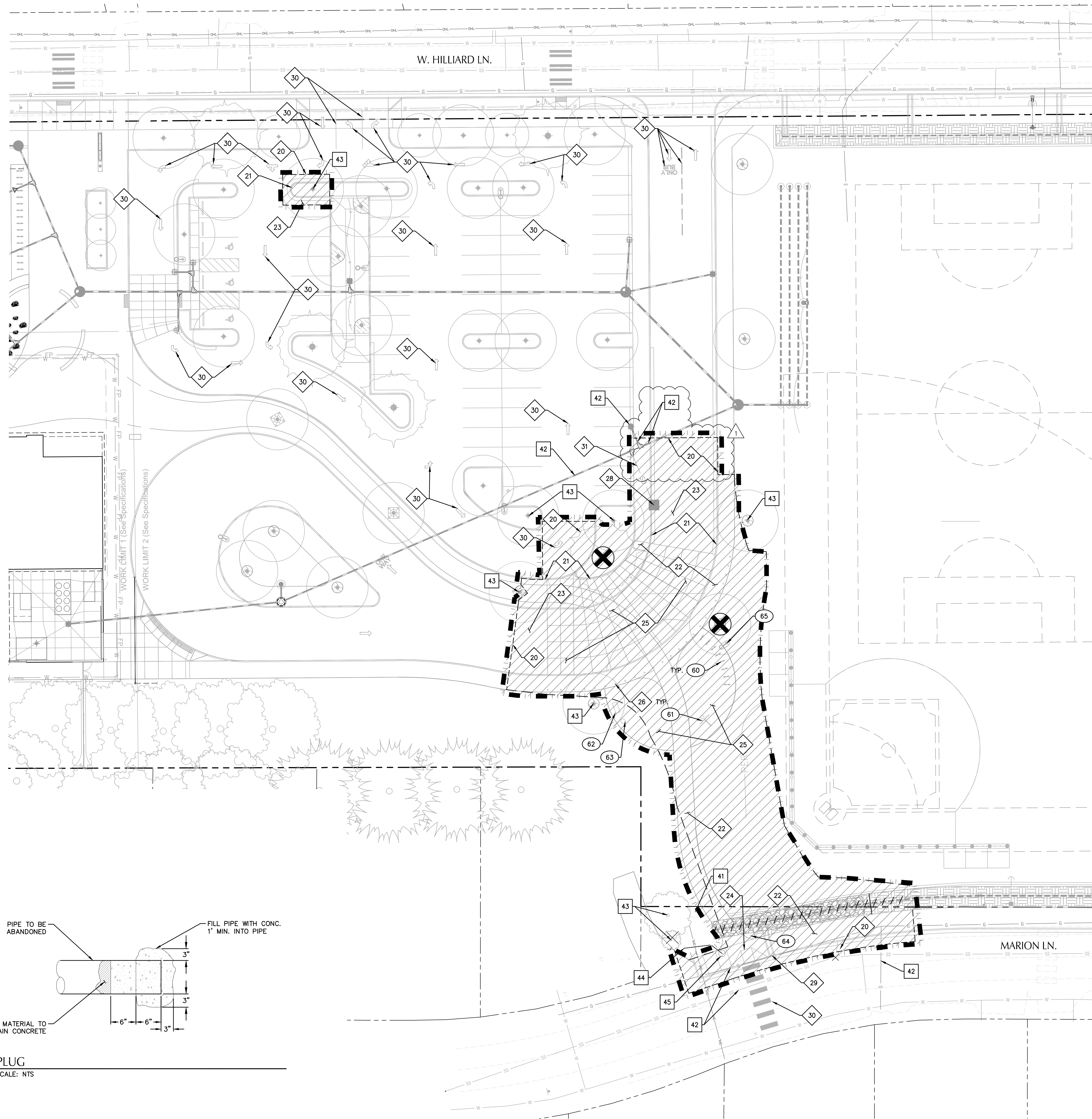
1-5-6 Question: What is the specification for the red dye?

Answer: Product to be Davis Colors "Mix Ready" concrete dye, color 160 'Brick Red', or approved equal. Insure concrete sealant is compatible with dye system.

1-5-7 Question: Do you have the foundation details for the basketball hoop and light pole?

Answer: Light pole and basketball hoop footing details to be issued in a subsequent document. For purposes of Bidding, assume a 2' diameter by 8' tall concrete base, reinforced with #3 rebar spirals for both the light pole base and the basketball goal.

End of Addendum # 2



1 PLUG
SCALE: NTS

SHEET NOTES

- CONTRACTOR SHALL FOLLOW ALL DEMOLITION NOTES ON SHEET C1.0.
- CONTRACTOR MAY STAGE WITHIN LIMITS OF DEMOLITION.
- REMOVE ALL SITE COMPONENTS AND RECYCLE COMPONENTS AS REQUIRED IN THE SPECIFICATIONS.
- GENERAL DEMOLITION PERMIT SHALL BE SECURED BY THE CONTRACTOR.
- ALL TRADE LICENSES AND PERMITS NECESSARY FOR THE PROCUREMENT AND COMPLETION OF THE WORK SHALL BE SECURED BY THE CONTRACTOR PRIOR TO COMMENCING DEMOLITION.
- THE CONTRACTOR SHALL PRESERVE AND PROTECT FROM DAMAGE ALL EXISTING RIGHT-OF-WAY SURVEY MONUMENTATION DURING DEMOLITION. THE CONTRACTOR IS RESPONSIBLE FOR COORDINATING AND PAYING FOR THE REPLACEMENT BY A LICENSED SURVEYOR OF ANY DAMAGED OR REMOVED MONUMENTS.
- PROTECT ALL ITEMS ON ADJACENT PROPERTIES AND IN THE RIGHT OF WAY INCLUDING BUT NOT LIMITED TO SIGNAL EQUIPMENT, PARKING METERS, SIDEWALKS, STREET TREES, STREET LIGHTS, CURBS, PAVEMENT AND SIGNS. CONTRACTOR SHALL BE RESPONSIBLE FOR RESTORING ANY DAMAGED ITEMS TO ORIGINAL CONDITION.
- PROTECT STRUCTURES, UTILITIES, SIDEWALKS, AND OTHER FACILITIES IMMEDIATELY ADJACENT TO EXCAVATIONS FROM DAMAGES CAUSED BY SETTLEMENT, LATERAL MOVEMENT, UNDERMINING, WASHOUT AND OTHER HAZARDS.
- CONTRACTOR IS RESPONSIBLE TO CONTROL DUST AND MUD DURING THE DEMOLITION PERIOD, AND DURING TRANSPORTATION OF DEMOLITION DEBRIS. ALL STREET SURFACES OUTSIDE THE CONSTRUCTION ZONE MUST BE KEPT CLEAN.
- ALL EXPOSED PORTIONS OF UNDERGROUND UTILITIES TO BE ABANDONED SHALL BE PLUGGED PER DETAIL 1/C1.1.

X DEMOLITION KEY NOTES

- SAWCUT LINE
- REMOVE CONCRETE CURB.
- REMOVE CONCRETE SIDEWALK
- REMOVE ASPHALT PAVEMENT AND CRUSHED ROCK SUBGRADE.
- REMOVE CONCRETE ADA RAMP.
- REMOVE CONCRETE PAVEMENT.
- REMOVE BOLLARD.
- REMOVE EXISTING UNDERGROUND ELECTRICAL SERVICE.
- REMOVE, SALVAGE AND RELOCATE CATCH BASIN
- REMOVE DRAINAGE CHANNEL AND GRATE
- REMOVE EXISTING STRIPING/MARKINGS (SANDBLAST)
- STORM LATERAL TO BE ABANDONED. PLUG PER DETAIL THIS SHEET.

X PROTECTION KEY NOTES

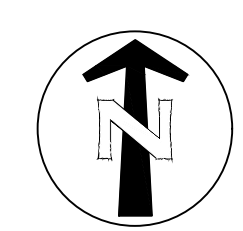
- PROTECT CURB AND SIDEWALK.
- PROTECT VAULT AND CONDUIT.
- PROTECT UNDERGROUND UTILITIES.
- PROTECT TREE.
- PROTECT CATCH BASIN.
- PROTECT DRY WELL
- PROTECT DRIVEWAY

X SALVAGE KEY NOTES

- SALVAGE BIKE RACK AND INSTALL IN LOCATION AS SHOWN IN PAVING PLAN.
- SALVAGE BASKETBALL HOOP AND INSTALL IN LOCATION AS SHOWN IN PAVING PLAN.
- SALVAGE BENCH AND INSTALL IN LOCATION AS SHOWN IN PAVING PLAN.
- SALVAGE TRASH CAN AND INSTALL IN LOCATION AS SHOWN IN PAVING PLAN.
- SALVAGE AND RELOCATE STREET CROSSING SIGN PER PAVING PLAN.
- SALVAGE LIGHT AND INSTALL IN LOCATION AS SHOWN IN PAVING PLAN.

SHEET LEGEND

- PROPERTY LINE
- DEMOLITION/WORK LIMITS (SHOWN OFFSET FOR CLARITY). EXISTING PAVEMENT, FENCES, CATCH BASINS, WALLS, LANDSCAPING, STRUCTURES, UTILITIES AND SURFACE FEATURES TO BE REMOVED U.N.O.
- SAWCUT LINE
- REMOVE UTILITY LINE
- REMOVE TREE



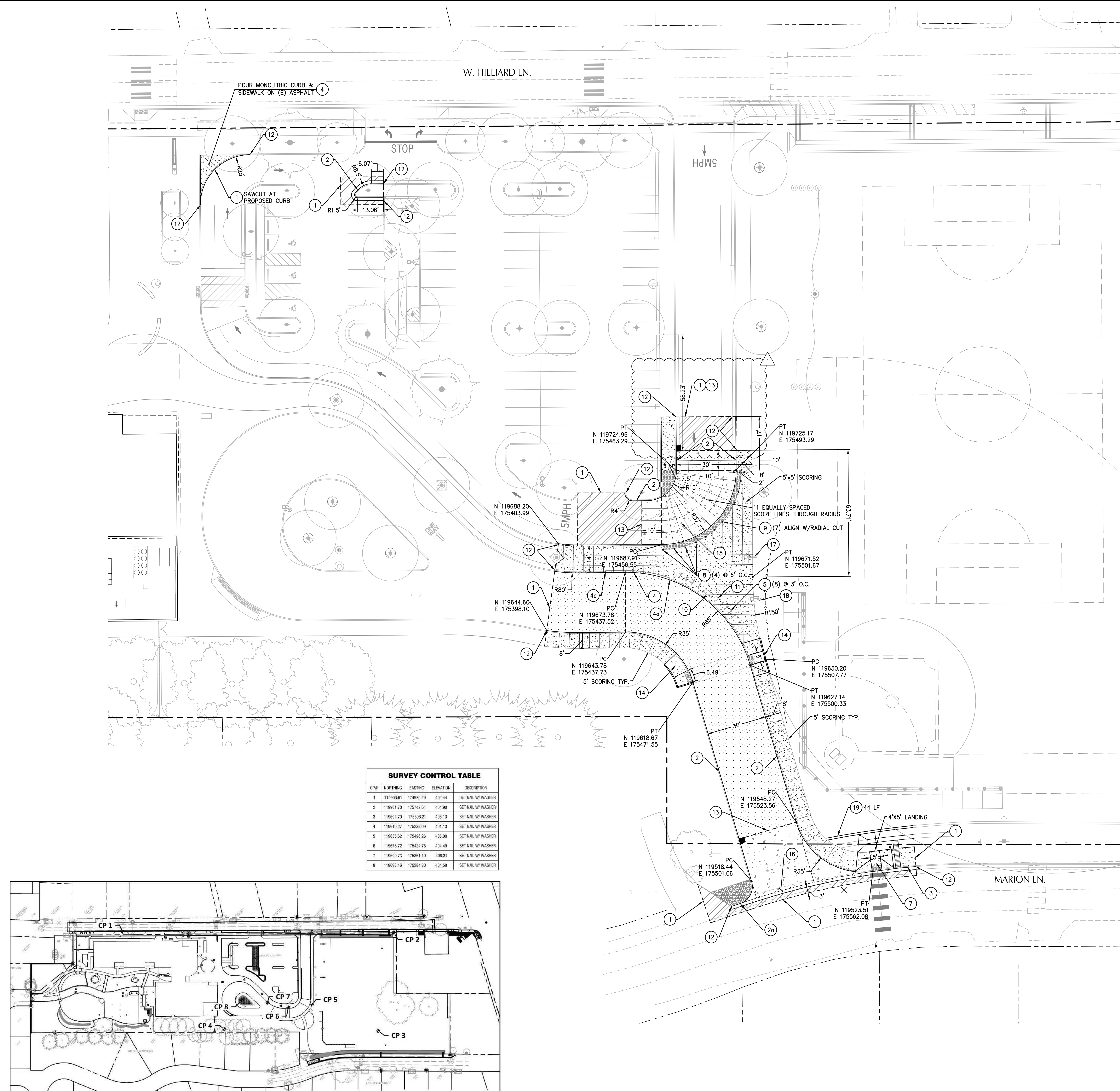
1200 Oak Street, Suite 100
Eugene, Oregon 97401
503.345.0099
m.kelly@pivotarch.com



100% CONSTRUCTION DOCUMENT SET - BUS LOOP
EUGENE SCHOOL DISTRICT 4J
120 WEST HILLIARD AVENUE, EUGENE, OREGON 97404
RIVER ROAD / EL CAMINO DEL RIO ELEMENTARY SCHOOL

SITE DEMOLITION PLAN

PROJECT #	133730	REVISIONS	
ISSUE DATE	7/27/18	1	ADD 002 - 7/27/18
C1.1			



SHEET NOTES

1. ALL DIMENSIONS ARE TO FACE OF CURB OR FACE OF WALL.
2. ALL SIDEWALK PAVEMENT JOINTS SHALL BE CONSTRUCTED PER DETAIL 12/C6.0.
3. PROPOSED FRONTAGE IMPROVEMENTS IN RIGHT-OF-WAY SHOWN FOR REFERENCE ONLY. TO BE PERMITTED UNDER SEPARATE PUBLIC WORKS PERMIT.
4. SITE CONTROL IS BASED ON PREVIOUS SURVEY PERFORMED BY BHE GROUP DATED JANUARY 5, 2016. SEE CONTROL POINT MAP AND TABLE ON THIS SHEET FOR SITE CONTROL.

(X) KEY NOTES

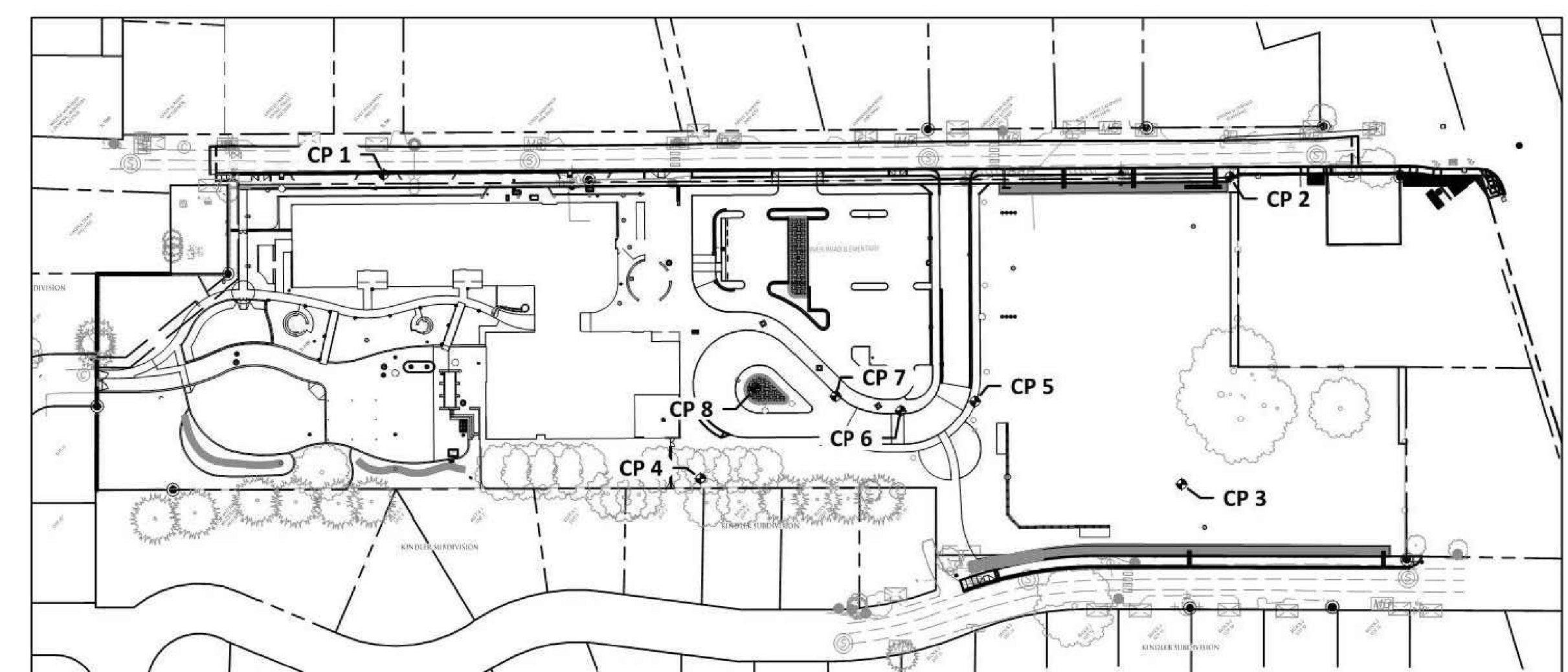
#	DESCRIPTION	DETAIL REF.
1	SAWCUT LINE AND MATCH EXISTING	
2	STANDARD CURB	5/C6.0
2a	FLUSH CURB	5/C6.0
3	CURB AND GUTTER	11/C6.0
4	MOUNTABLE CURB	6/C6.0
4a	CHANGE FROM STANDARD CURB TO MOUNTABLE CURB	
5	BIKE RACK. RELOCATE SALVAGED BIKE RACK. LOCATE 4' FROM FACE OF CURB.	
6	DETECTABLE WARNING	10/C6.0
7	CURB RAMP - TYPE 1	8/C6.0
8	REMOVABLE BOLLARD	14/C6.0
9	STATIONARY BOLLARD. REFER TO SHEET X OF ORIGINAL PLAN SET.	
10	BENCH. RE-INSTALL SALVAGED BENCH 3.5' FROM FACE OF CURB.	
11	TRASH CAN. RE-INSTALL SALVAGED TRASH CAN. ALIGN WITH BIKE RACKS.	
12	MATCH EXISTING	
13	TRANSITION ASPHALT TO CONCRETE	4/C6.0
14	CURB RAMP - TYPE 2	9/C6.0
15	RAISED PEDESTRIAN CROSSING. CROSSING AND RAMP TO BE DYED RED.	
16	VALLEY GUTTER	17/C6.0
17	BASKETBALL HOOP. RE-INSTALL SALVAGED BASKETBALL HOOP 2' FROM EDGE OF NEW SIDEWALK.	
18	LIGHT. RE-INSTALL SALVAGED LIGHT	
19	CONCRETE MOW BAND.	18/C6.0

SHEET LEGEND

SYMBOL	DESCRIPTION	DETAIL REF.
--- (dashed line)	PROPERTY LINE	
▨ (stippled pattern)	CURB AND SIDEWALK	7 (CURB)
▨ (diagonal lines /)	LIGHT ASPHALT PAVEMENT SECTION	1 (CURB)
▨ (diagonal lines \)	HEAVY ASPHALT PAVEMENT SECTION	2 (CURB)
▨ (cross-hatched pattern)	CONCRETE PAVEMENT SECTION	3 (CURB)
▨ (dotted pattern)	CRUSHED ROCK BASE	
▨ (stippled pattern with dots)	DETECTABLE WARNING SURFACE	10 (CURB)

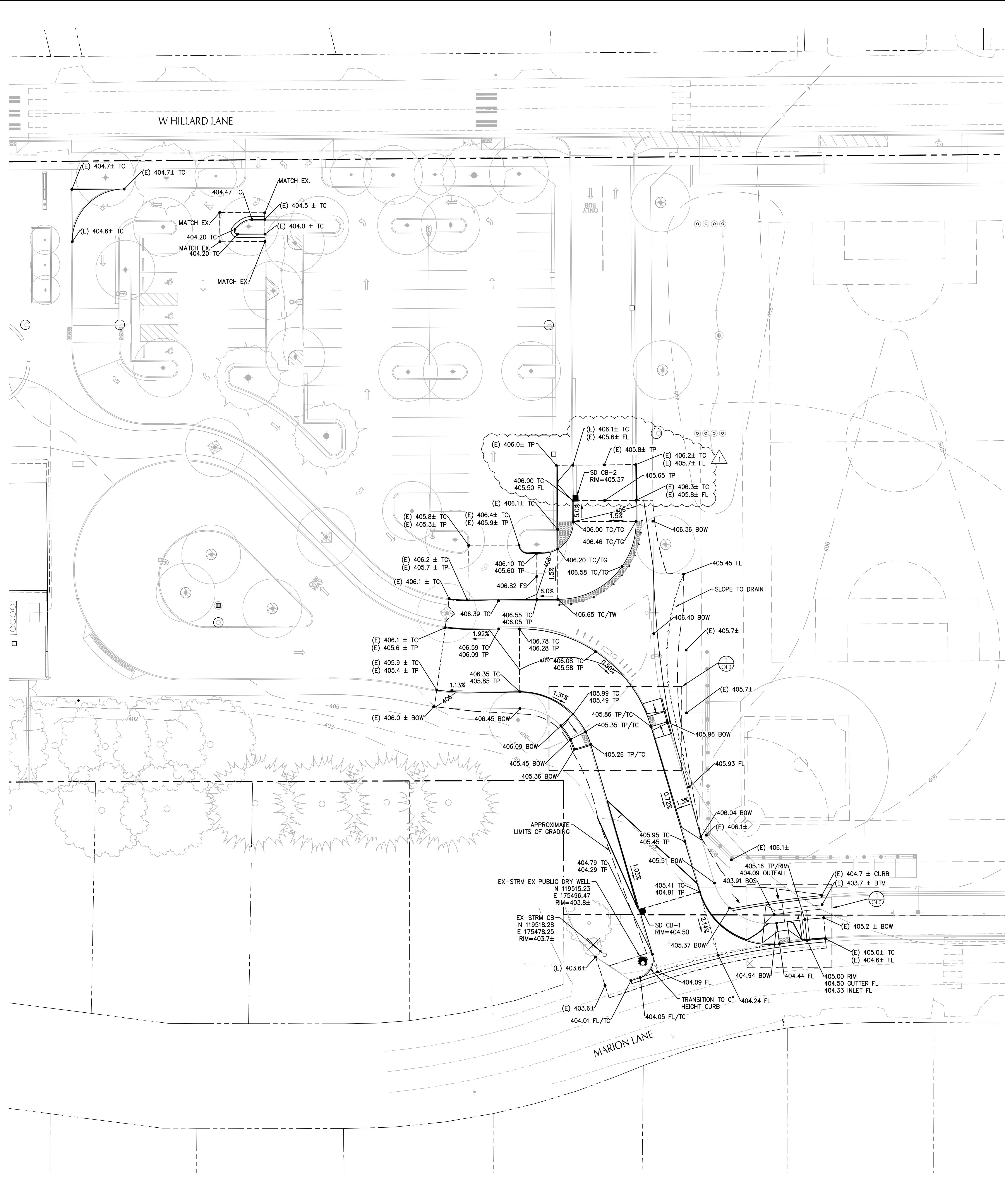
SURVEY CONTROL TABLE

CP#	NORTHING	EASTING	ELEVATION	DESCRIPTION
1	119903.91	174925.29	402.44	SET NAIL W/ WASHER
2	119901.70	175142.04	404.90	SET NAIL W/ WASHER
3	119804.79	175886.21	405.13	SET NAIL W/ WASHER
4	119610.27	176232.09	401.13	SET NAIL W/ WASHER
5	119685.62	175496.25	405.00	SET NAIL W/ WASHER
6	119676.72	175424.75	404.49	SET NAIL W/ WASHER
7	119660.73	175361.10	406.31	SET NAIL W/ WASHER
8	119698.46	176284.80	404.58	SET NAIL W/ WASHER



1 CONTROL POINT MAP AND TABLE
Scale: 1" = 120'





SHEET NOTES

- SLOPES PROVIDED ON SLOPE ARROW ARE FOR REFERENCE ONLY.
- LANDINGS ON ACCESSIBLE ROUTES SHALL NOT EXCEED 2% IN ANY DIRECTION.
- ALL ACCESSIBLE ROUTES SHALL COMPLY WITH CURRENT ADA ACCESSIBILITY GUIDELINES FOR BUILDING AND FACILITIES (ADAAG).

KEY NOTES

NOTE DESCRIPTION

DETAIL REF.



REGISTERED PROFESSIONAL ENGINEER
 OREGON
 MATTHEW M. KELLY
 LICENSE NO. 56481
 EXPIRATION DATE: 6/30/2019



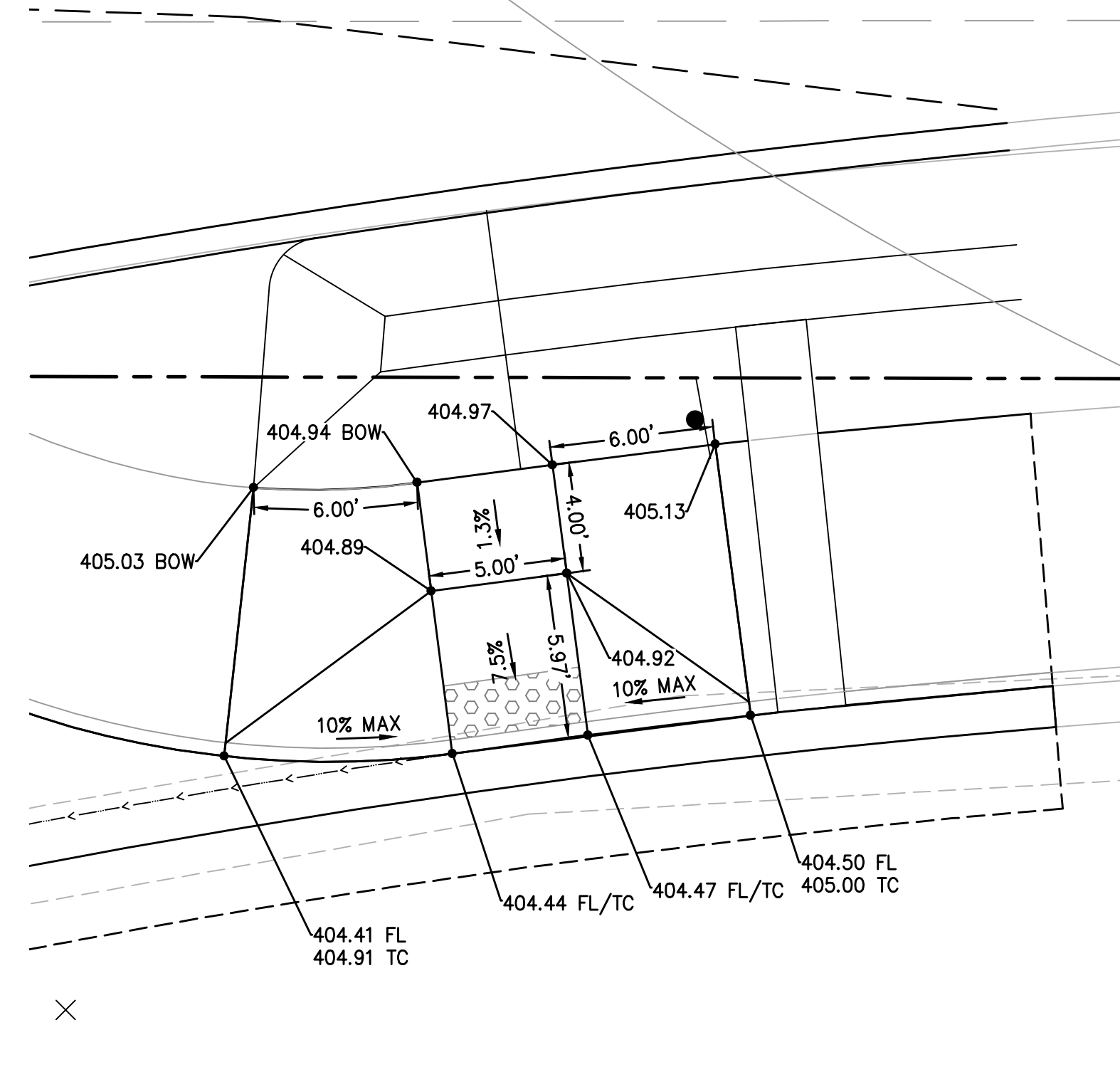
1201 DON STREET, SUITE 100
 EUGENE, OREGON 97401
 541.345.0909
 WWW.KPFF.COM

GRADING LABEL LEGEND

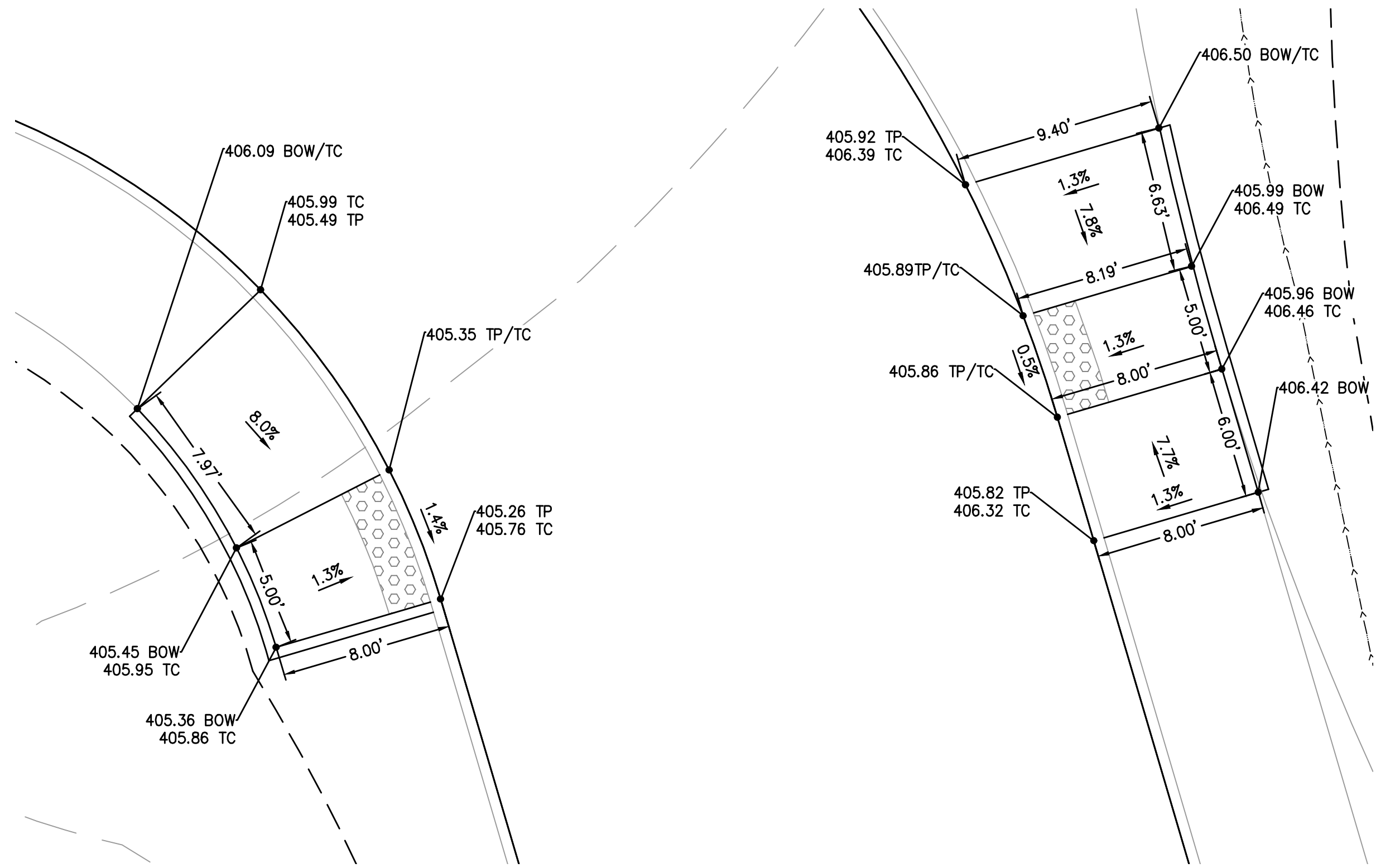
CALLOUT	DESCRIPTION
X.XX%	GRADING SLOPE AND DIRECTION (DOWNHILL)
XX	SPOT ELEVATION
XXXX	DESCRIPTION LISTED BELOW. NO DESCRIPTION MEANS TP OR TG
(E) BOW	EXISTING BACK OF WALK
(E) BTM	EXISTING BOTTOM OF RAINGARDEN
(E) FL	EXISTING GRADE
(E) FL	EXISTING FLOW LINE
G	GUTTER
RIM	RIM OF STRUCTURE
TC	TOP OF CURB
TP	TOP OF PAVEMENT

SHEET LEGEND

---	GRADE BREAK
---	EX. CONTOUR MINOR
---	EX. CONTOUR MAJOR
---	CONVEYANCE SWALE
---	FLOW DIRECTION



1 RAMP DETAIL SCALE: 1" = 5'



2 RAMP DETAIL SCALE: 1" = 5'

