

MULTI-SITE SECURITY FENCING 2018

C.I.P. # 420.780.113



LorenBerryArchitect
 41601 Madrone Street, Springfield, OR 97478
 (541) 596-3692 (p) (541) 896-0231 (f)

MULTI-SITE SECURITY FENCING 2018
 EUGENE SCHOOL DISTRICT 4J
 C.I.P.#420.780.113

TITLE SHEET

PROJECT NUMBER	1802	
DRAWN	DMT	
CHECKED	LRB	
DATE	5/2/2018	
REVISIONS		
No.	Description	Date

SHEET NUMBER

T1

GATE SCHEDULE													
GATE NUMBER	USE	GATE DIMENSIONS		TYPE	EXT. GATE FINISH	INT. GATE FINISH	FRAME TYPE	EXT. FRAME FINISH	INT. FRAME FINISH	HARDWARE GROUP	HOLD OPEN QUANTITY	DETAILS	REMARKS
		WIDTH	HEIGHT										

ADAMS													
1	UTILITY GATE	8'-0" x 6'-0"	-	PF	PF	TS	PF	PF	PF	2	1	3/A4.2	
2	EGRESS GATE	PR 3'-0" x 6'-0"	-	PF	PF	TS	PF	PF	PF	2	2	3/A4.2	PROVIDE PANIC HARDWARE (OFCI)
3	EGRESS GATE	3'-0" x 6'-0"	-	PF	PF	TS	PF	PF	PF	1	1	2/A4.2	PROVIDE PANIC HARDWARE (OFCI)
4	EGRESS GATE	3'-0" x 6'-0"	-	PF	PF	TS	PF	PF	PF	1	1	2/A4.2	PROVIDE PANIC HARDWARE (OFCI)
5	EGRESS GATE	3'-0" x 6'-0"	-	PF	PF	TS	PF	PF	PF	1	1	2/A4.2	PROVIDE PANIC HARDWARE (OFCI)
6	UTILITY GATE	PR 6'-0" x 6'-0"	-	PF	PF	TS	PF	PF	PF	2	2	5/A4.2	
7	EGRESS GATE	3'-0" x 6'-0"	-	PF	PF	TS	PF	PF	PF	1	1	2/A4.2	PROVIDE PANIC HARDWARE (OFCI)
8	EGRESS GATE	3'-0" x 6'-0"	-	PF	PF	TS	PF	PF	PF	1	1	2/A4.2	PROVIDE PANIC HARDWARE (OFCI)
9	EGRESS GATE	3'-0" x 6'-0"	-	PF	PF	TS	PF	PF	PF	1	1	2/A4.2	PROVIDE PANIC HARDWARE (OFCI)
10	EGRESS GATE	3'-0" x 6'-0"	-	PF	PF	TS	PF	PF	PF	2	1	1/A4.2	PROVIDE PANIC HARDWARE (OFCI)
11	EGRESS GATE	3'-0" x 6'-0"	-	PF	PF	TS	PF	PF	PF	2	1	1/A4.2	PROVIDE PANIC HARDWARE (OFCI)
12	EGRESS GATE	3'-0" x 6'-0"	-	PF	PF	TS	PF	PF	PF	2	1	1/A4.2	PROVIDE PANIC HARDWARE (OFCI)
13	EGRESS GATE	3'-0" x 6'-0"	-	PF	PF	TS	PF	PF	PF	2	1	1/A4.2	PROVIDE PANIC HARDWARE (OFCI)
14	EGRESS GATE	3'-0" x 6'-0"	-	PF	PF	TS	PF	PF	PF	2	1	1/A4.2	PROVIDE PANIC HARDWARE (OFCI)
15	UTILITY GATE	PR 6'-0" x 6'-0"	-	PF	PF	TS	PF	PF	PF	2	2	5/A4.2	

CAMAS RIDGE													
1	EGRESS GATE	3'-0" x 6'-0"	-	PF	PF	TS	PF	PF	PF	2	1	1/A4.2	PROVIDE PANIC HARDWARE (OFCI)
2	UTILITY GATE	PR 6'-0" x 6'-0"	-	PF	PF	TS	PF	PF	PF	2	2	5/A4.2	
3	UTILITY GATE	PR 6'-0" x 6'-0"	-	PF	PF	TS	PF	PF	PF	2	2	5/A4.2	
4	EGRESS GATE	3'-0" x 6'-0"	-	PF	PF	TS	PF	PF	PF	1	1	2/A4.2	PROVIDE PANIC HARDWARE (OFCI)
5	EGRESS GATE	3'-0" x 6'-0"	-	PF	PF	TS	PF	PF	PF	1	1	2/A4.2	PROVIDE PANIC HARDWARE (OFCI)
6	EGRESS GATE	3'-0" x 6'-0"	-	PF	PF	TS	PF	PF	PF	1	2	2/A4.2	PROVIDE PANIC HARDWARE (OFCI)
7	EGRESS GATE	3'-0" x 6'-0"	-	PF	PF	TS	PF	PF	PF	1	1	2/A4.2	PROVIDE PANIC HARDWARE (OFCI)
8	EGRESS GATE	3'-0" x 6'-0"	-	PF	PF	TS	PF	PF	PF	1	1	2/A4.2	PROVIDE PANIC HARDWARE (OFCI)
9	EGRESS GATE	3'-0" x 6'-0"	-	PF	PF	TS	PF	PF	PF	1	1	2/A4.2	PROVIDE PANIC HARDWARE (OFCI)
10	EGRESS GATE	3'-0" x 6'-0"	-	PF	PF	TS	PF	PF	PF	2	1	1/A4.2	PROVIDE PANIC HARDWARE (OFCI)
11	EGRESS GATE	3'-0" x 6'-0"	-	PF	PF	TS	PF	PF	PF	2	1	1/A4.2	PROVIDE PANIC HARDWARE (OFCI)
12	EGRESS GATE	3'-0" x 6'-0"	-	PF	PF	TS	PF	PF	PF	2	1	1/A4.2	PROVIDE PANIC HARDWARE (OFCI)
13	EGRESS GATE	PR 3'-0" x 6'-0"	-	PF	PF	TS	PF	PF	PF	2	2	1/A4.2	PROVIDE PANIC HARDWARE (OFCI)
14	EGRESS GATE	3'-0" x 6'-0"	-	PF	PF	TS	PF	PF	PF	2	1	1/A4.2	PROVIDE PANIC HARDWARE (OFCI)
15	UTILITY GATE	PR 6'-0" x 6'-0"	-	PF	PF	TS	PF	PF	PF	3	2	4/A4.2	
16	EGRESS GATE	3'-0" x 6'-0"	-	PF	PF	TS	PF	PF	PF	2	1	1/A4.2	PROVIDE PANIC HARDWARE (OFCI)
17	UTILITY GATE	PR 6'-0" x 6'-0"	-	PF	PF	TS	PF	PF	PF	3	2	4/A4.2	
18	EGRESS GATE	3'-0" x 6'-0"	-	PF	PF	TS	PF	PF	PF	2	1	1/A4.2	PROVIDE PANIC HARDWARE (OFCI)

TWIN OAKS													
1	EGRESS GATE	3'-0" x 6'-0"	-	PF	PF	TS	PF	PF	PF	1	1	2/A4.2	PROVIDE PANIC HARDWARE (OFCI)
2	EGRESS GATE	3'-0" x 6'-0"	-	PF	PF	TS	PF	PF	PF	1	1	2/A4.2	PROVIDE PANIC HARDWARE (OFCI)
3	UTILITY GATE	PR 6'-0" x 6'-0"	-	PF	PF	TS	PF	PF	PF	2	2	5/A4.2	
4	EGRESS GATE	3'-0" x 6'-0"	-	PF	PF	TS	PF	PF	PF	1	1	2/A4.2	PROVIDE PANIC HARDWARE (OFCI)
5	EGRESS GATE	3'-0" x 6'-0"	-	PF	PF	TS	PF	PF	PF	1	1	2/A4.2	PROVIDE PANIC HARDWARE (OFCI)
6	EGRESS GATE	3'-0" x 6'-0"	-	PF	PF	TS	PF	PF	PF	1	1	2/A4.2	PROVIDE PANIC HARDWARE (OFCI)
7	EGRESS GATE	3'-0" x 6'-0"	-	PF	PF	TS	PF	PF	PF	1	1	2/A4.2	PROVIDE PANIC HARDWARE (OFCI)
8	EGRESS GATE	3'-0" x 6'-0"	-	PF	PF	TS	PF	PF	PF	1	1	2/A4.2	PROVIDE PANIC HARDWARE (OFCI)
9	ROLLING GATE	(E) WIDTH x 6'-0"	-	PF	PF	TS	PF	PF	PF	4	-	-	V-GROOVE DBL. WHEEL CARRIER
10	EGRESS GATE	3'-0" x 6'-0"	-	PF	PF	TS	PF	PF	PF	1	1	2/A4.2	PROVIDE PANIC HARDWARE (OFCI)
11	UTILITY GATE	PR 6'-0" x 6'-0"	-	PF	PF	TS	PF	PF	PF	2	2	5/A4.2	
12	EGRESS GATE	3'-0" x 6'-0"	-	PF	PF	TS	PF	PF	PF	1	1	2/A4.2	PROVIDE PANIC HARDWARE (OFCI)
13	EGRESS GATE	3'-0" x 6'-0"	-	PF	PF	TS	PF	PF	PF	1	1	2/A4.2	PROVIDE PANIC HARDWARE (OFCI)
14	EGRESS GATE	3'-0" x 6'-0"	-	PF	PF	TS	PF	PF	PF	1	1	2/A4.2	PROVIDE PANIC HARDWARE (OFCI)
15	EGRESS GATE	3'-0" x 6'-0"	-	PF	PF	TS	PF	PF	PF	1	1	2/A4.2	PROVIDE PANIC HARDWARE (OFCI)
16	UTILITY GATE	PR 6'-0" x 6'-0"	-	PF	PF	TS	PF	PF	PF	2	2	5/A4.2	
17	EGRESS GATE	(E) WIDTH x 6'-0"	-	PF	PF	TS	PF	PF	PF	1	1	2/A4.2	PROVIDE PANIC HARDWARE (OFCI)

HARDWARE GROUPS:
 (REFER TO SPECIFICATIONS)

GROUP 1:

- PULL HANDLE W/ LOCK CYLINDER
- SURFACE MOUNTED PANIC HARDWARE
- STEEL HINGE, JANSEN "GORILLA" GUA2060.200GAL
- HOLD-OPEN LATCH HOOK
- GATE STOP METAL ANGLE

GROUP 2:

- STEEL HINGE, JANSEN "GORILLA" GUA2060.200GAL
- LATCH LOCK
- HOLD-OPEN LATCH HOOK
- GATE STOP PLATE

GROUP 3:

- STEEL HINGE, JANSEN "GORILLA" GUA2060.200GAL
- MASTER HALCO ROLO LATCH OR APPROVED
- HOLD-OPEN LATCH HOOK
- GATE STOP PLATE

GROUP 4:

- MASTER HALCO ROLO LATCH OR APPROVED

ARCHITECT

LOREN BERRY ARCHITECT
 41601 MADRONE STREET
 SPRINGFIELD, OREGON 97478
 (541) 896-3692 FAX (541) 896-0231
 LOREN BERRY, AIA
 lberry@berryyarch.com

OWNER

4J SCHOOL DISTRICT
 200 NORTH MONROE STREET
 EUGENE, OREGON 97401
 (541) 790-7430
 DON PHILPOT
 philpot@4j.lane.edu

ELECTRICAL DESIGN

JLG ENGINEERING
 31910 OWL ROAD
 EUGENE, OREGON 97405
 (541) 912-0065
 JEFF GRAPER
 jgraper@systemswestengineers.com

PROJECT DESCRIPTION

SECURITY FENCE
 WITH UTILITY & EGRESS GATES
 AT (3) LOCATIONS

BUILDING DATA - TYPICAL

CODES: 2010 STRUCTURAL SPECIALTY CODE
 2010 OREGON FIRE CODE

FIRE SPRINKLER: NO
 OCCUPANT LOAD: NO CHANGE

CONSTRUCTION TYPE: V
 OCCUPANCY TYPE: GROUP E

DRAWING SYMBOLS

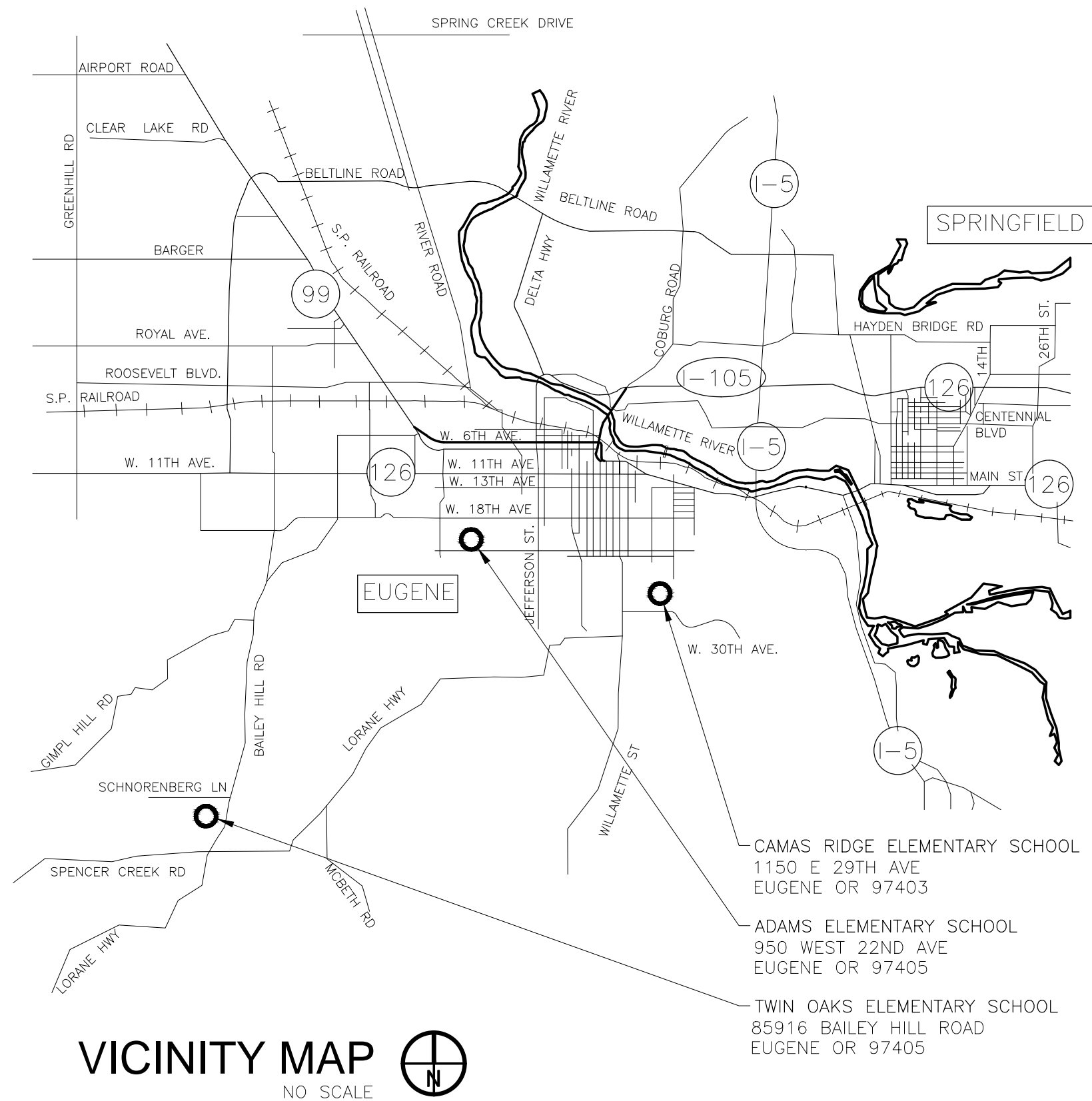
- # KEYED NOTE AS SHOWN ON SHEET
- # GATE NUMBER DESIGNATION (SEE GATE SCHEDULE, DWG. T1)
- # FENCE TYPE DESIGNATION (SEE LEGEND SHOWN ON SHEET)
- SECTION DESIGNATION
- SHEET NO. WHERE SHOWN
- DETAIL DESIGNATION
- SHEET NO. WHERE SHOWN
- MAJOR SECTION REFERENCE INDICATES DIRECTION AND POINT AT WHICH SECTION IS TAKEN.
- DETAIL OR SECTION REFERENCE REFERS TO SECTION OR DETAILS.

ABBREVIATIONS

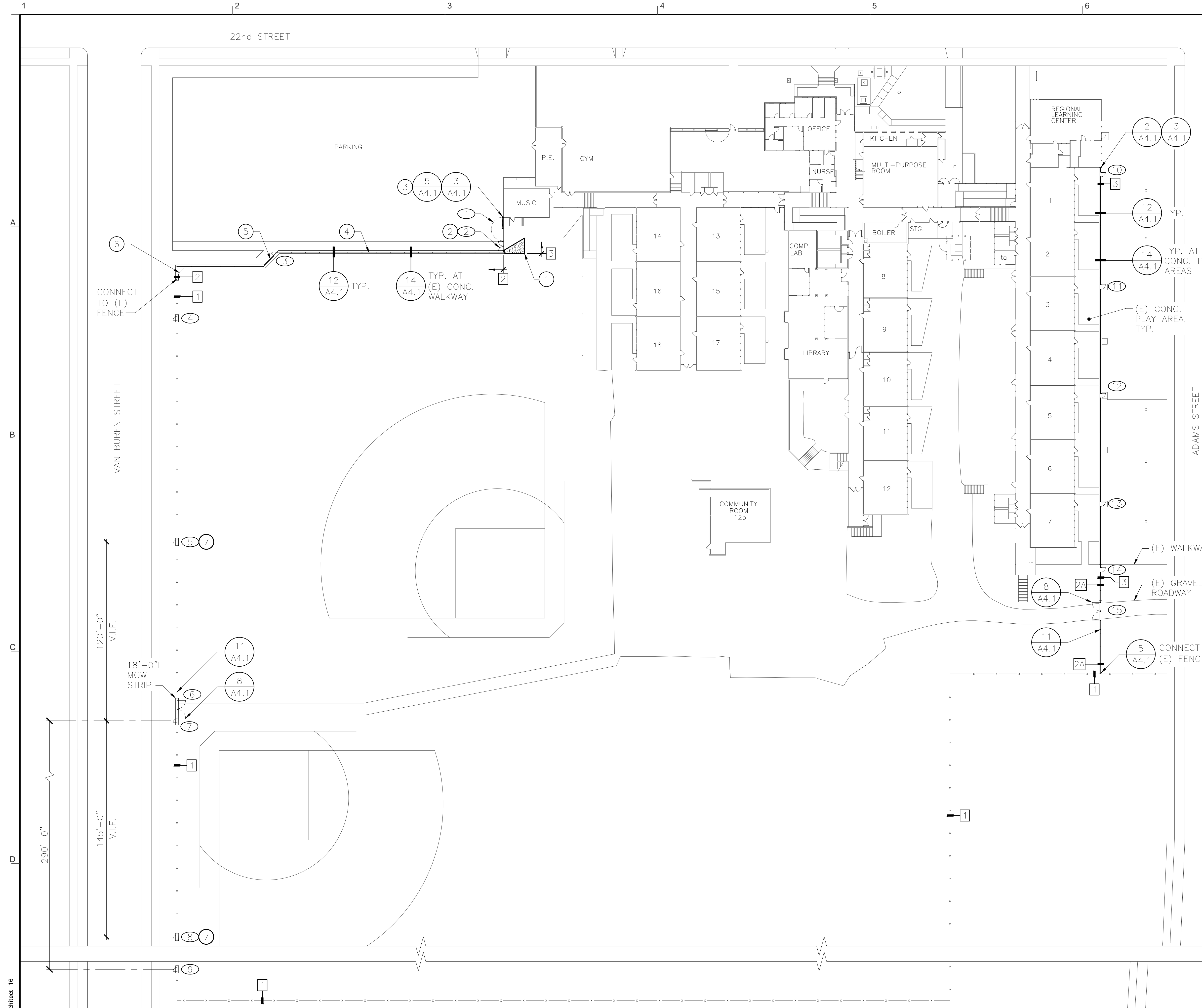
& @	And	HB	Hose Bibb
~	At	HORIZ	Horizontal
CL	Center Line	INCL	Include
~	Diameter or Round	INT	Interior
#	Found or Number	OC	On Center
AB	Anchor Bolt	OFCI	Owner Furnished Contractor Installed
AC	Asphalt Concrete	OF	Outside Face
AD	Area Drain	PF	Pre-finished paint by manufacturer
ADD	Addendum	PR	Pair
ALT	Alternate	PVMT	Pavement
ARCH	Architectural	REIN	Reinforce(4),(ing)
BO	By Owner	REQD	Required
CJ	Control Joint	REV	Revision
CLR	Clear	RND	Round
CO	Clean out	SQ	Square
CTR	Center	TOC	Top of Concrete
ø, DIA	Diameter	TOC	Top of Concrete
DIM	Dimension	TOP	Top of Pavement
DTL	Detail	TOS	Top of Slab
DWG	Drawing	TOW	Top of Wall
(E)	Existing	TS	Tube Steel
EA	Each	TYP	Typical
EJ	Expansion Joint	UNO	Unless Noted Otherwise
EMBED	Embedment	VERT	Vertical
EQ	Equal	VFY	Verify
EXT	Exterior	V.I.F	Verify In Field
FTG	Footing	W	West
GALV	Galvanized	W/	With
GND	Ground	W/O	Without
OR	Grade		
GVL	Gravel		

DRAWING INDEX

GENERAL	
T1	TITLE SHEET
ARCHITECTURAL	
A1	SITE PLAN - ADAMS ELEMENTARY SCHOOL
A2	SITE PLAN - CAMAS RIDGE ELEMENTARY SCHOOL
A3	SITE PLAN - TWIN OAKS ELEMENTARY SCHOOL
DETAILS	
A4.1	DETAILS
A4.2	DETAILS
ELECTRICAL	
E1.0	ELECTRICAL SYMBOLS AND SCHEDULES
E1.1	ELECTRICAL SITE PLAN - ADAMS ELEMENTARY SCHOOL
E1.2	ELECTRICAL SITE PLAN - CAMAS RIDGE ELEMENTARY SCHOOL



© LorenBerryArchitect 16



GENERAL NOTES

- SEE SPECIFICATIONS SECTION 32 31 13 FOR FURTHER INFORMATION REGARDING FENCE AND GATE DESIGN AND CONSTRUCTION.
- CONTRACTOR IS RESPONSIBLE FOR RELOCATION OF IRRIGATION IN WAY OF NEW WORK. COORDINATE WITH DISTRICT IRRIGATION SPECIALIST DAN PACHAECO 541-790-7595.

KEYED NOTES

- 6" CONCRETE W/ #3 @ 18" O.C. E.W., AIR ENTRAINED W/LIGHT BROOM FINISH OVER 4" ROCK. DOWEL INTO (E) CONC. PER DTL. 14/A4.1.
- INSTALL LATCH POST FOR NORTH EGRESS GATE PER DTL. 8/A4.1. INSTALL GATE HOLD-OPEN FOR SOUTH EGRESS GATE PER DTL. 11/A4.1.
- INSTALL EYE BOLT ON END POST AT LOCATION TO RECEIVE GATE LATCH HOOK.
- PLACE FENCE LINE WITHIN MOW STRIP 6" AWAY FROM SOUTH EDGE (THIS LENGTH OF FENCE ONLY).
- PLACE FENCE LINE WITHIN MOW STRIP 6" AWAY FROM NORTH EDGE (THIS LENGTH OF FENCE ONLY).
- ADD CONCRETE AT INSIDE CORNER TO FORM 48" CHAMFER.
- EXISTING OPENING IN FENCE TO BE MODIFIED FOR NEW GATE.

LEGEND

- 1 (E) CHAIN LINK FENCE
- 2 TYPE II CHAIN LINK FENCING SYSTEM - BLACK POWDER COATED COMPONENTS, BLACK VINYL COATED MESH WIRE, BOTTOM RAIL, MOW STRIP
- 2A TYPE II CHAIN LINK FENCING SYSTEM - BLACK POWDER COATED COMPONENTS, BLACK VINYL COATED MESH WIRE, NO BOTTOM RAIL, ADD TENSION WIRE, MOW STRIP
- 3 DECORATIVE METAL FENCING SYSTEM
- # GATE NUMBER DESIGNATION (FOR DESIGN AND DETAIL REFERENCE, SEE GATE SCHEDULE ON DWG. T1)
- Denotes CONCRETE MOWSTRIP UNDER NEW GATE. BLEND AND COMPACT EARTH OR ROCK BACKFILL EVEN WITH CONCRETE



LorenBerryArchitect
 41601 Madrone Street Springfield, OR 97478
 (541) 596-3692 (P) 541-596-0231

MULTI-SITE SECURITY FENCING 2018
 EUGENE SCHOOL DISTRICT 4J
 C.I.P.#420.780.113

SITE PLAN
 ADAMS ELEMENTARY SCHOOL

PROJECT NUMBER	1802	
DRAWN	DMT	
CHECKED	LRB	
DATE	5/2/2018	
REVISIONS		
No.	Description	Date

SHEET NUMBER

A1



LorenBerryArchitect
 41601 Madrone Street, Springfield, OR 97478
 (p) 541-896-3692
 (f) 541-896-0231

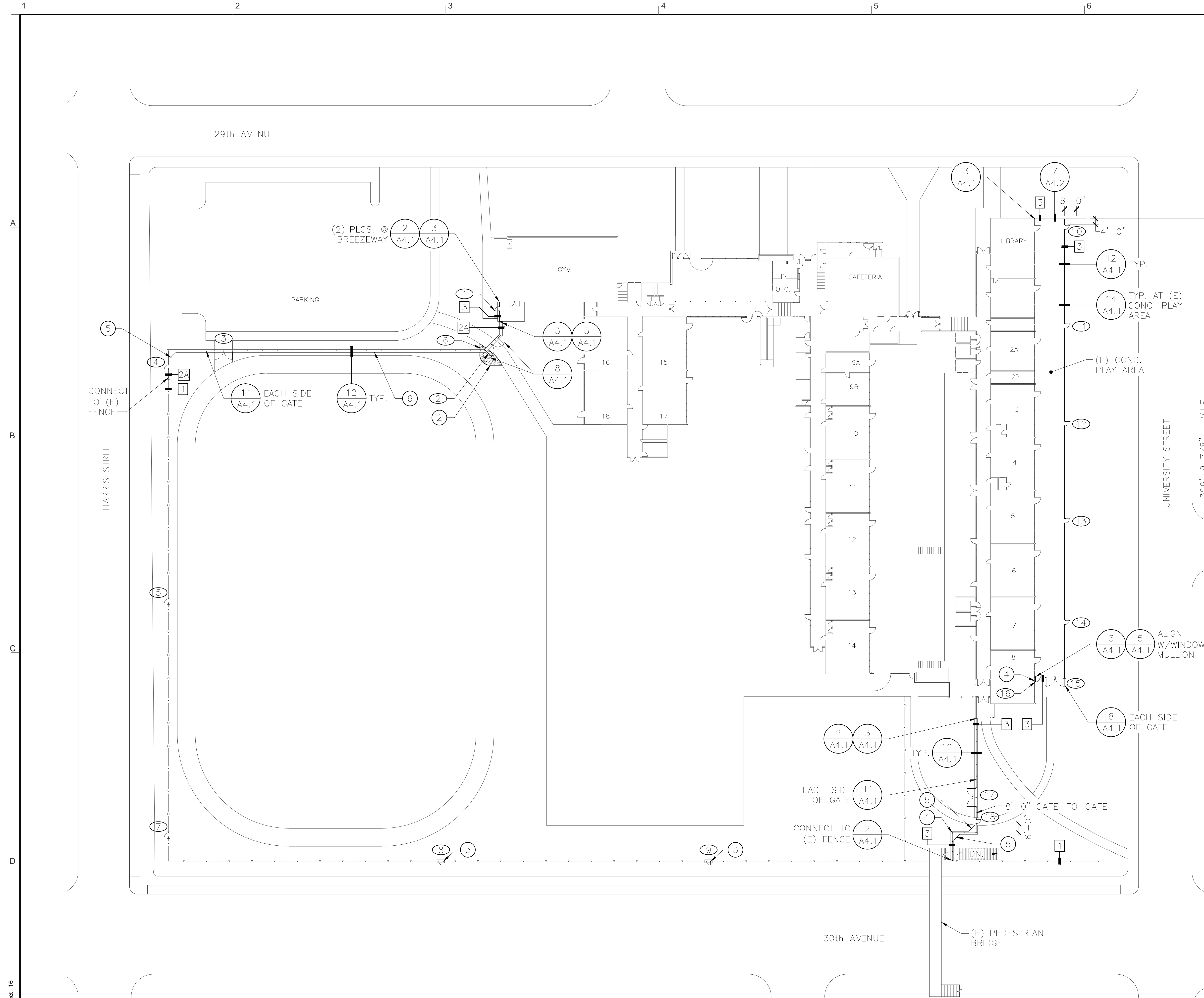
MULTI-SITE SECURITY FENCING 2018
 EUGENE SCHOOL DISTRICT 4J
 C.I.P.#420.780.113

SITE PLAN
 CAMAS RIDGE ELEMENTARY SCHOOL

PROJECT NUMBER	1802	
DRAWN	DMT	
CHECKED	LRB	
DATE	5/2/2018	
REVISIONS		
No.	Description	Date

SHEET NUMBER

A2



GENERAL NOTES

- SEE SPECIFICATIONS SECTION 32 31 13 FOR FURTHER INFORMATION REGARDING FENCE AND GATE DESIGN AND CONSTRUCTION.
- CONTRACTOR IS RESPONSIBLE FOR RELOCATION OF IRRIGATION IN WAY OF NEW WORK. COORDINATE WITH DISTRICT IRRIGATION SPECIALIST DAN PACHAECO 541-790-7595.

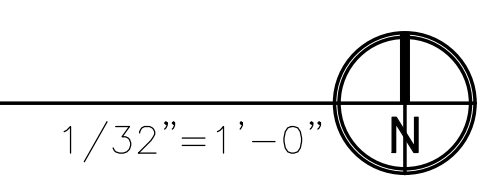
KEYED NOTES

- EXTEND FENCE WESTERLY ONLY TO THE POINT WHERE IT WILL TURN 90° TO THE SOUTH AND TRAVEL UNDERNEATH THE PEDESTRIAN BRIDGE STRUCTURE WITH A 3'-0" MIN. CLEARANCE FROM TOP OF FENCE POST TO UNDERSIDE OF STRUCTURE. CONNECT TO (E) FENCE.
- 4" DECOMPOSED GRANITE OVER 4" ROCK. BLEND INTO (E) GRAVEL ROADWAY.
- FINAL GATE LOCATION TO BE DETERMINED IN THE FIELD BY OWNER.
- INSTALL EYE BOLT ON (E) STRUCTURE AT LOCATION TO RECEIVE GATE LATCH HOOK.
- ADD CONCRETE AT INSIDE CORNER TO FORM 48" CHAMFER.
- SLOPE MOW STRIP TO MATCH (E) GRADE.

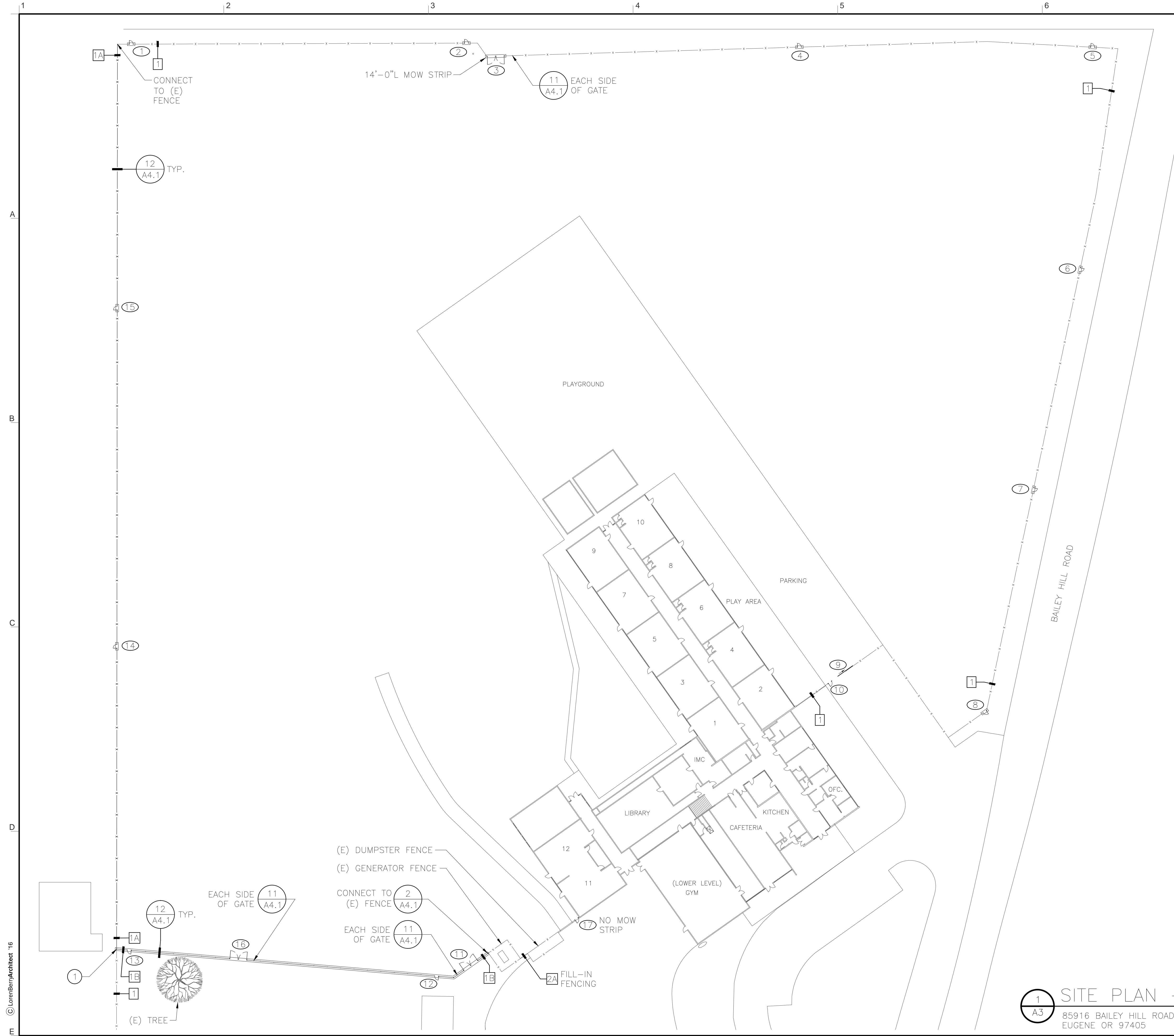
LEGEND

- 1 (E) CHAIN LINK FENCE
- 2 TYPE II CHAIN LINK FENCING SYSTEM - BLACK POWDER COATED COMPONENTS, BLACK VINYL COATED MESH WIRE, BOTTOM RAIL, MOW STRIP
- 2A TYPE II CHAIN LINK FENCING SYSTEM - BLACK POWDER COATED COMPONENTS, BLACK VINYL COATED MESH WIRE, NO BOTTOM RAIL, ADD TENSION WIRE, MOW STRIP
- 3 DECORATIVE METAL FENCING SYSTEM
- # GATE NUMBER DESIGNATION (FOR DESIGN AND DETAIL REFERENCE, SEE GATE SCHEDULE ON DWG. T1)
- Denotes CONCRETE MOWSTRIP UNDER NEW GATE. BLEND AND COMPACT EARTH OR ROCK BACKFILL EVEN WITH CONCRETE

1 SITE PLAN - CAMAS RIDGE
 A2 1150 E 29TH AVE
 EUGENE OR 97403



© LorenBerryArchitect '16



GENERAL NOTES

- SEE SPECIFICATIONS SECTION 32 31 13 FOR FURTHER INFORMATION REGARDING FENCE AND GATE DESIGN AND CONSTRUCTION.
- CONTRACTOR IS RESPONSIBLE FOR RELOCATION OF IRRIGATION IN WAY OF NEW WORK. COORDINATE WITH DISTRICT IRRIGATION SPECIALIST DAN PACHAECO 541-790-7595.

KEYED NOTES

- REPLACE (E) FENCE POST WITH CORNER POST AND RECONNECT TO (E) FENCE TO THE SOUTH. REPLACE (E) FENCE LINE TO THE NORTH AS SHOWN.

EXISTING GATE TO BE FIT WITH PANIC HARDWARE.

LEGEND

- 1 (E) CHAIN LINK FENCE
- 1A TYPE I CHAIN LINK FENCING SYSTEM – GALVANIZED, NO BOTTOM RAIL, ADD TENSION WIRE, NO MOW STRIP.
- 1B TYPE I CHAIN LINK FENCING SYSTEM – GALVANIZED, NO BOTTOM RAIL, ADD TENSION WIRE, MOW STRIP.
- # GATE NUMBER DESIGNATION (FOR DESIGN AND DETAIL REFERENCE, SEE GATE SCHEDULE ON DWG. T1)
- 1 DENOTES CONCRETE MOWSTRIP UNDER NEW GATE. BLEND AND COMPACT EARTH OR ROCK BACKFILL EVEN WITH CONCRETE

1 SITE PLAN – TWIN OAKS
 A3 85916 BAILEY HILL ROAD
 EUGENE OR 97405 1/32"=1'-0"



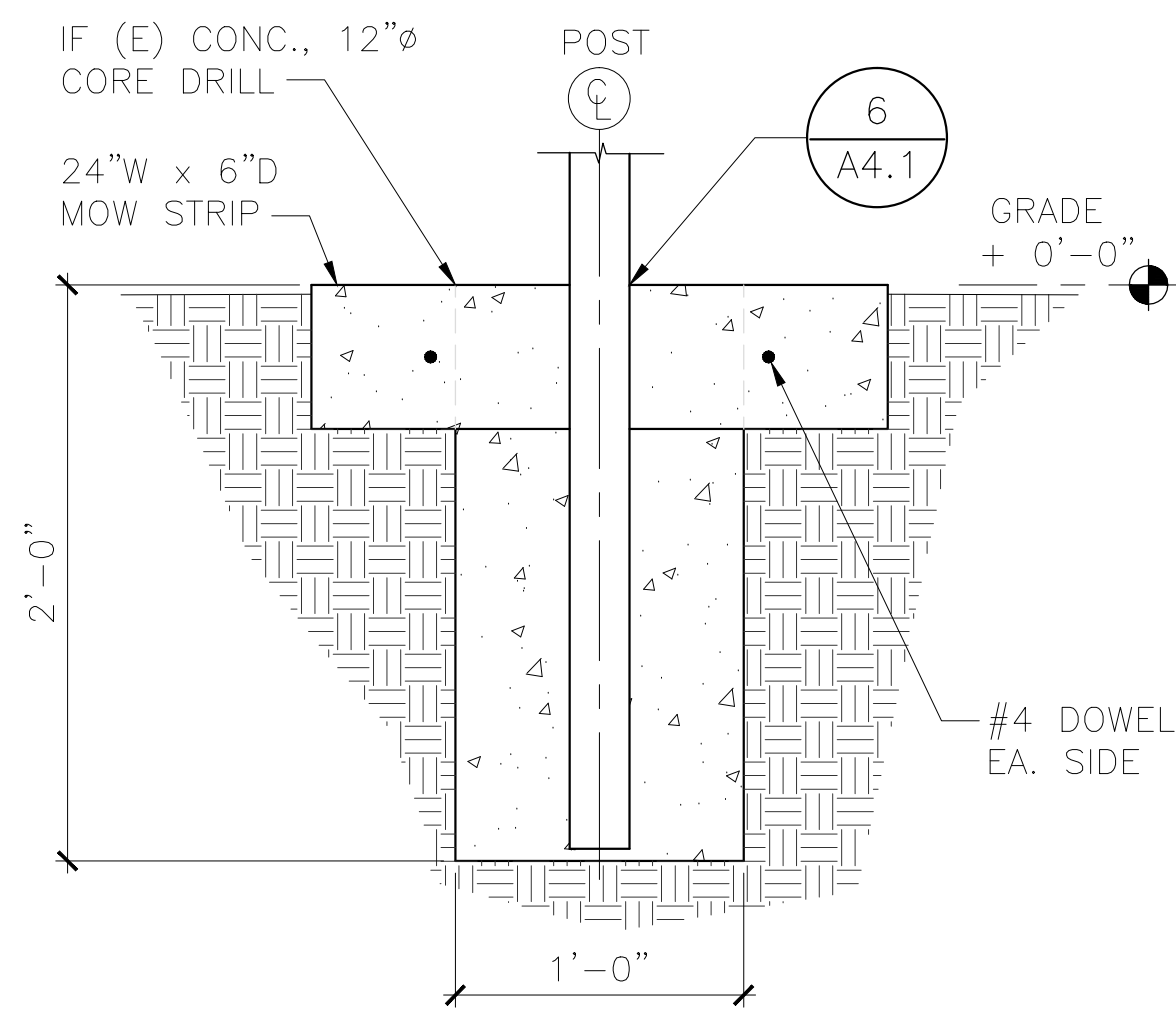
LorenBerryArchitect
 LOREN R. BERRY
 EUGENE, OREGON
 41601 Madrone Street Springfield, OR 97478
 (p) 541-896-3692
 (f) 541-896-0231

MULTI-SITE SECURITY FENCING 2018
 EUGENE SCHOOL DISTRICT 4J
 C.I.P.#420.780.113

SITE PLAN
 TWIN OAKS ELEMENTARY SCHOOL

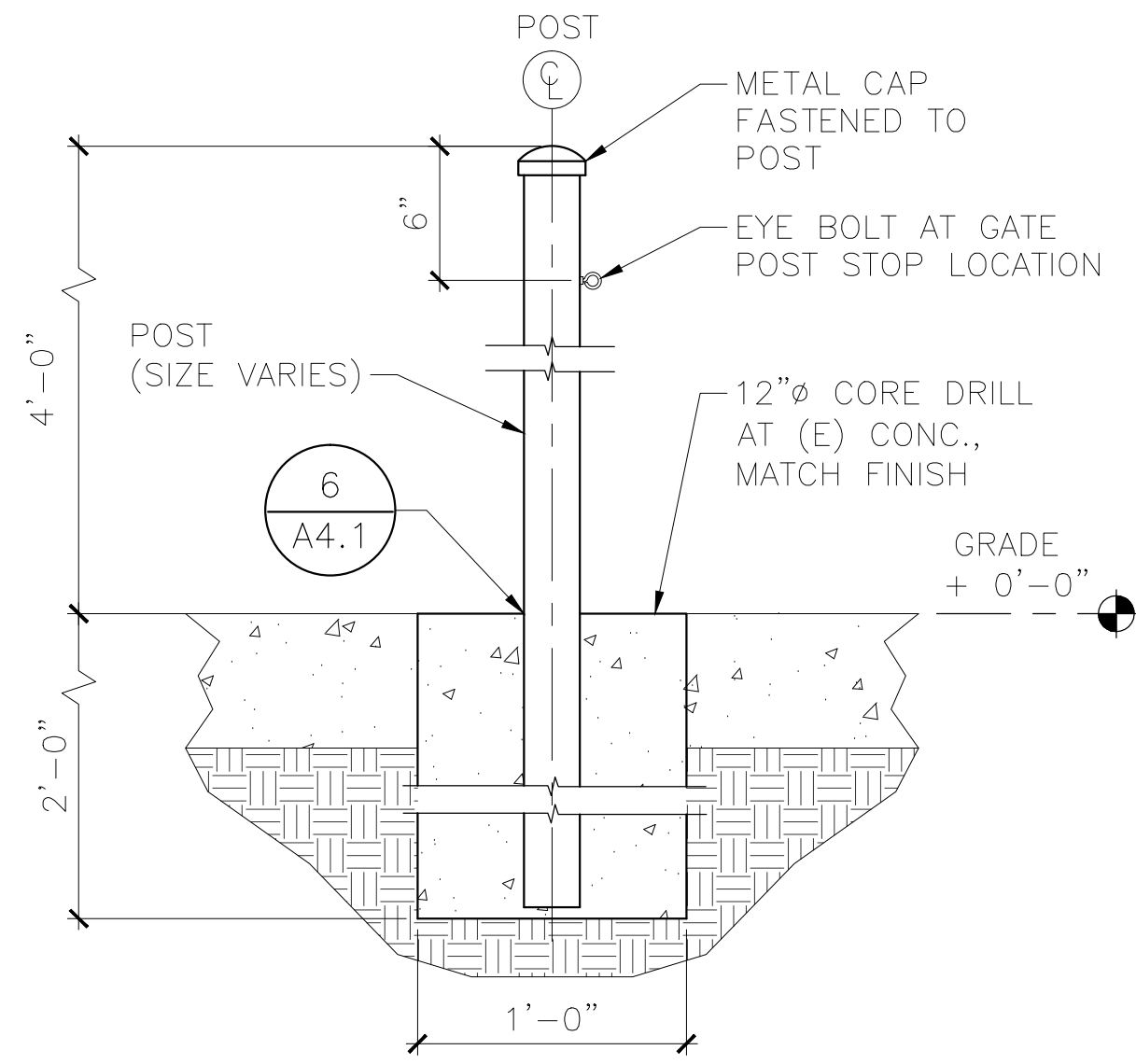
PROJECT NUMBER	1802	
DRAWN	DMT	
CHECKED	LRB	
DATE	5/2/2018	
REVISIONS		
No.	Description	Date

SHEET NUMBER
A3

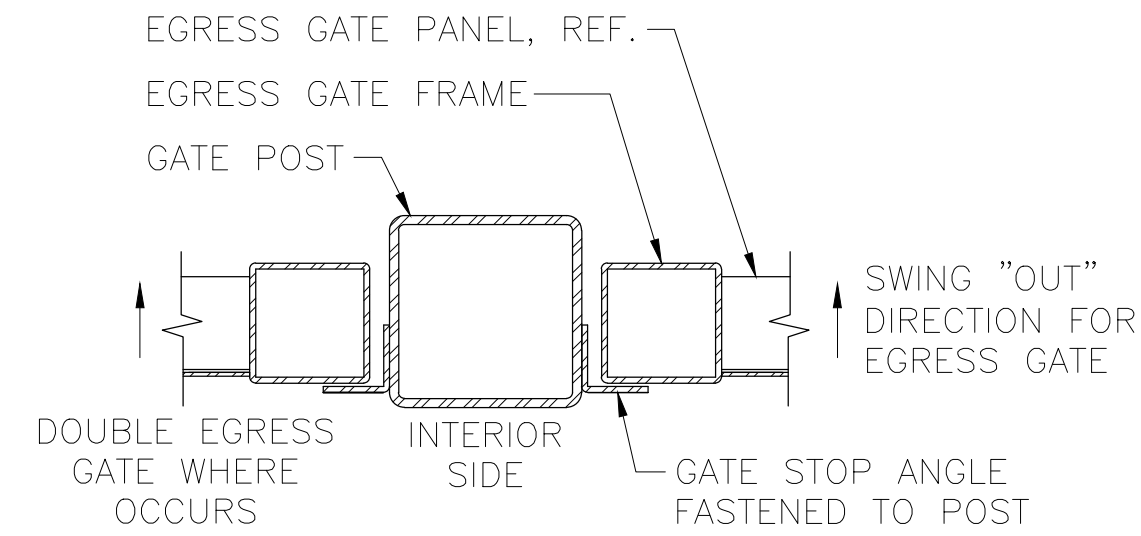


NOTE: SPACE LINE POSTS EQUALLY ALONG STRAIGHT RUNS OF FENCE. MAXIMUM SPACING TO BE 8'-0".

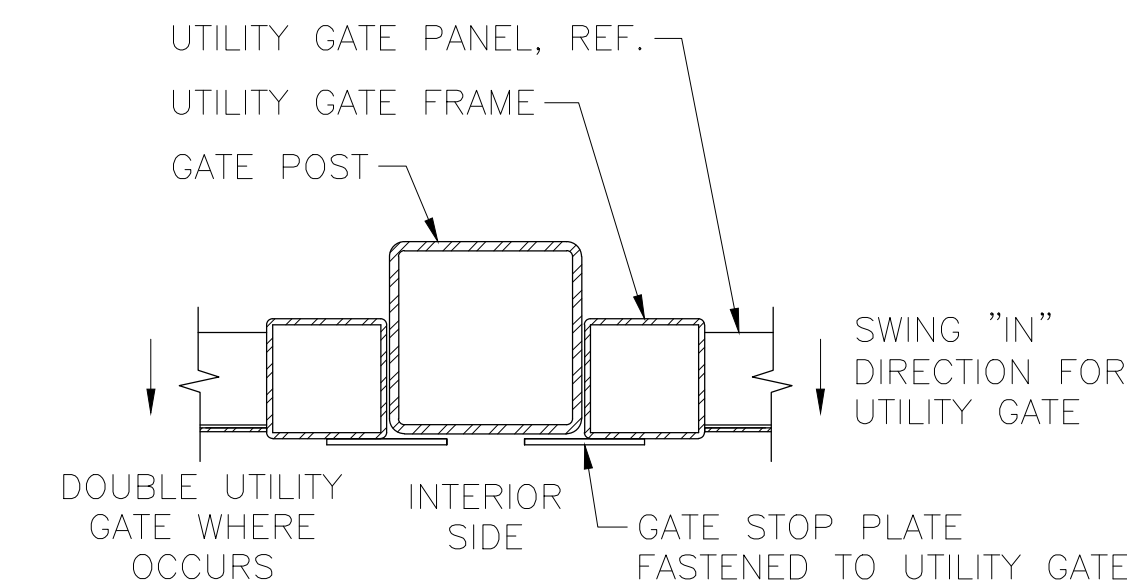
12 LINE POST
A4.1 1 1/2" = 1'-0"



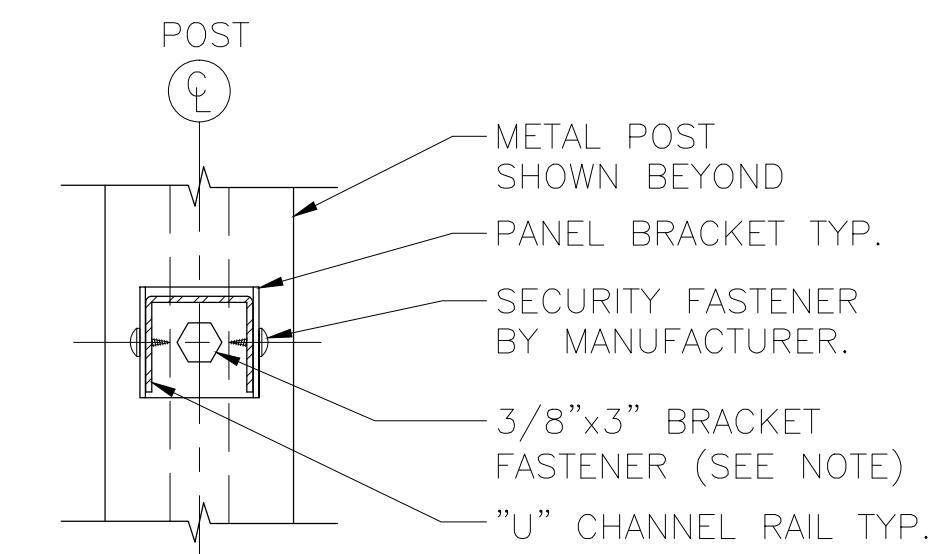
8 LATCH POST DETAIL
A4.1 1 1/2" = 1'-0"



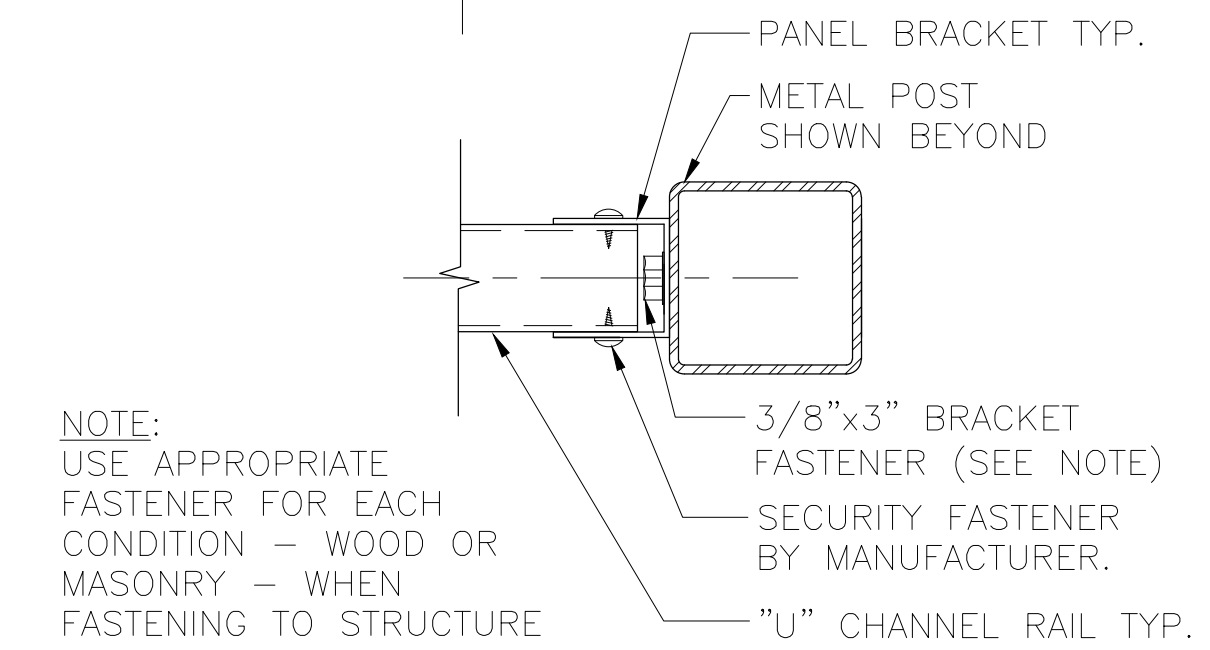
EGRESS GATE



UTILITY GATE

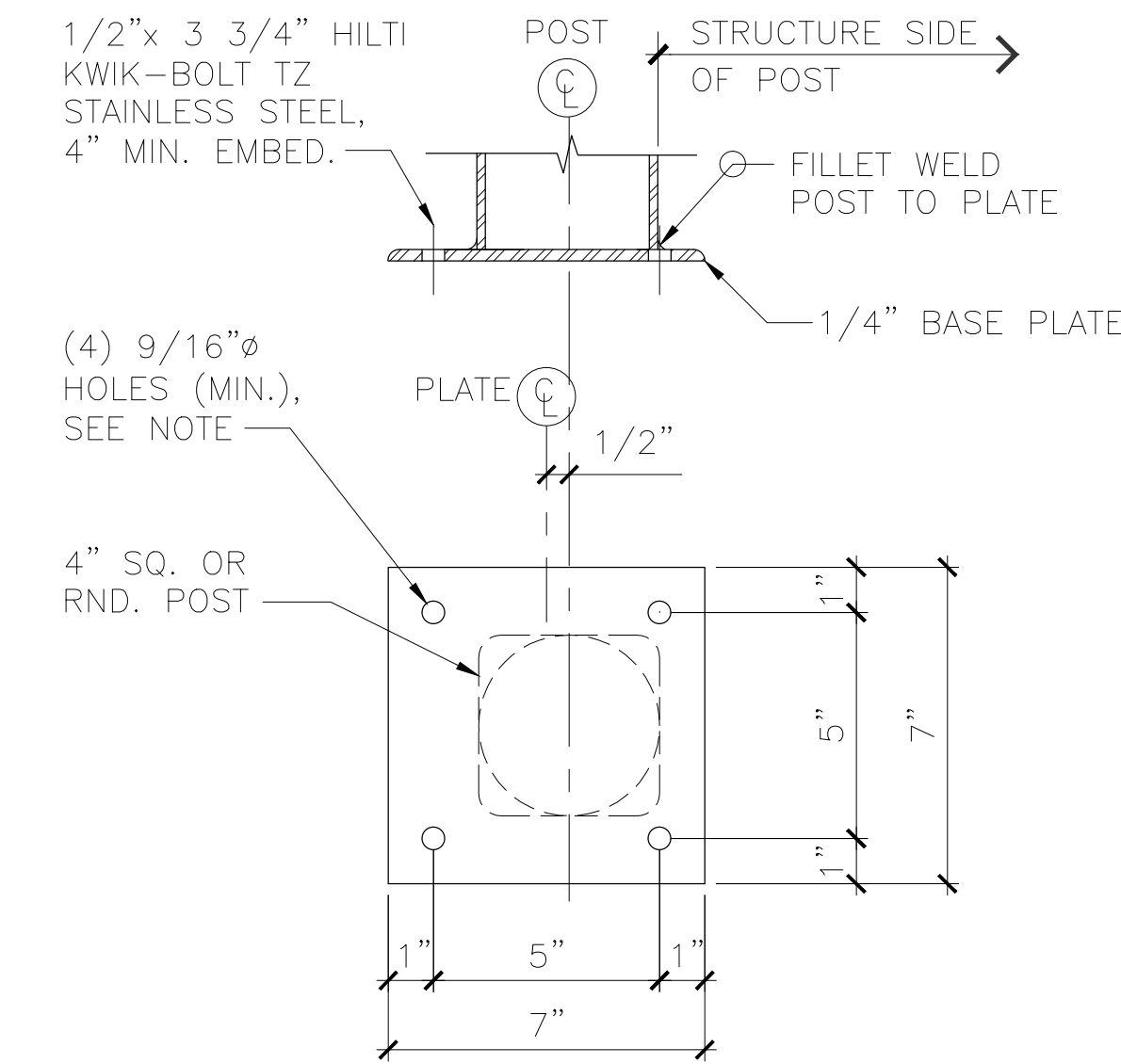


1 FENCE PANEL ATTACHMENT
A4.1 3" = 1'-0"



NOTE: USE APPROPRIATE FASTENER FOR EACH CONDITION - WOOD OR MASONRY - WHEN FASTENING TO STRUCTURE

4 STRIKE POST AT GATE
A4.1 3" = 1'-0"



NOTE: FABRICATE HOLES IN PLATE ACCORDING TO SIZE REQUIRED FOR ANCHORS, SEE 7/A4.1

5 OFFSET BASE PLATE DETAIL
A4.1 3" = 1'-0"

WHERE POSTS ARE GROUTED INTO CORE-DRILLED HOLES, A 1/4" DIAMETER HOLE IS TO BE DRILLED IN THE POST APPROPRIATELY 1/2" ABOVE FINISH ELEVATION TO ALLOW FOR DRAINAGE OF BUILT-UP GROUND WATER. THE DRILLED HOLE MUST BE WIPED CLEAN AND DRY AND SPRAYED WITH FENCING MANUFACTURER APPROVED ZINC RICH PRIMER AND APPROVED COLOR MATCH FINISH, SPECIFIED AS BLACK. TYPICAL ALL SIZE POSTS.

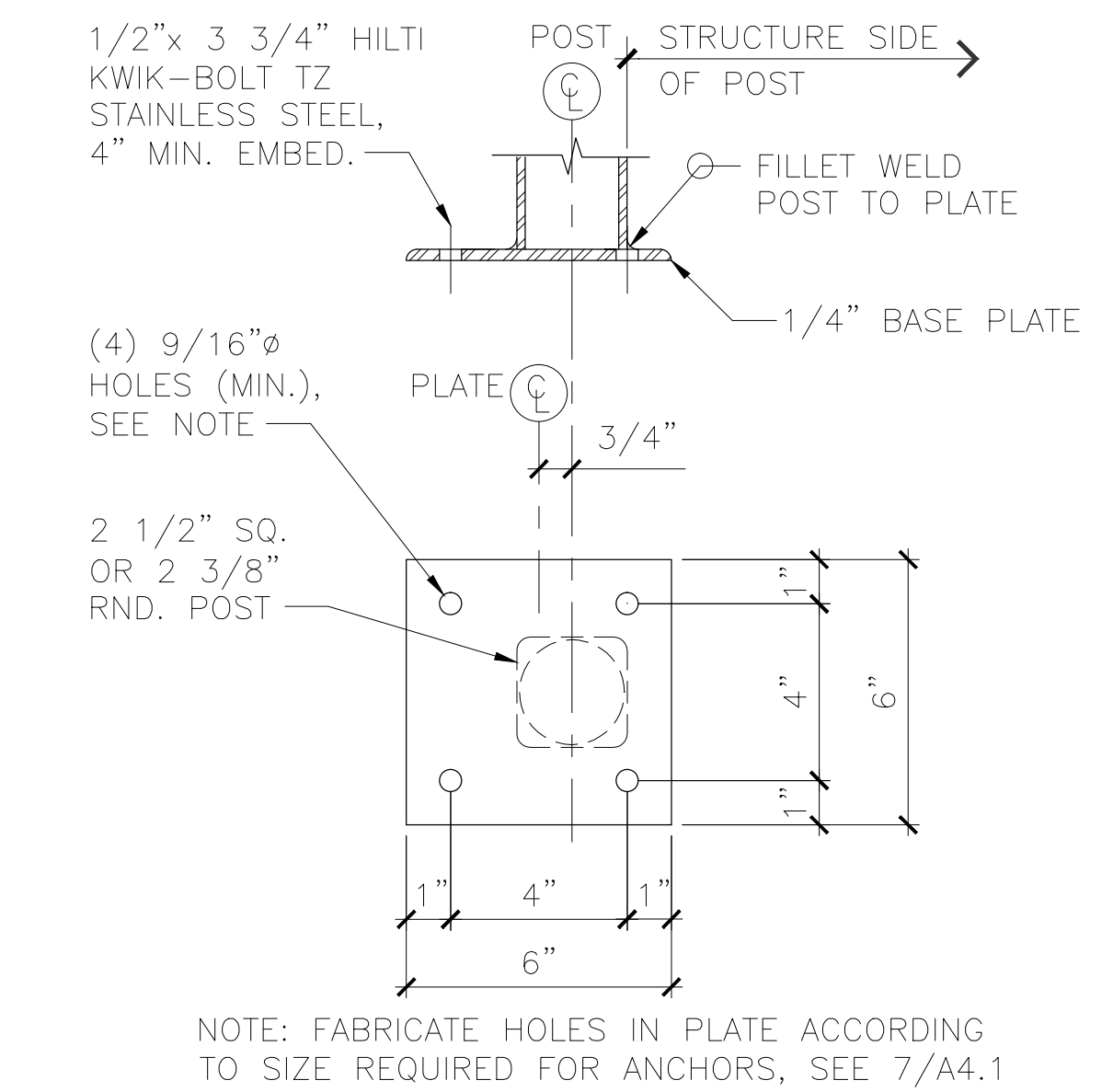
6 WEEP HOLE NOTE
A4.1 N.T.S.

ANCHORS DESIGNED AND TESTED FOR USE IN CRACKED CONCRETE ARE TO BE INSTALLED.

1. INSTALL HILTI KWIK-BOLT TZ S.S. ANCHOR SYSTEM THAT OFFER BOTH ADHESIVE AND MECHANICAL REQUIREMENTS AND ARE ICC-ES CODE LISTED FOR USE IN CRACKED AND UNCRACKED CONCRETE ENVIRONMENTS. ALL OTHER PRODUCTS MUST BE APPROVED BEFORE USE.

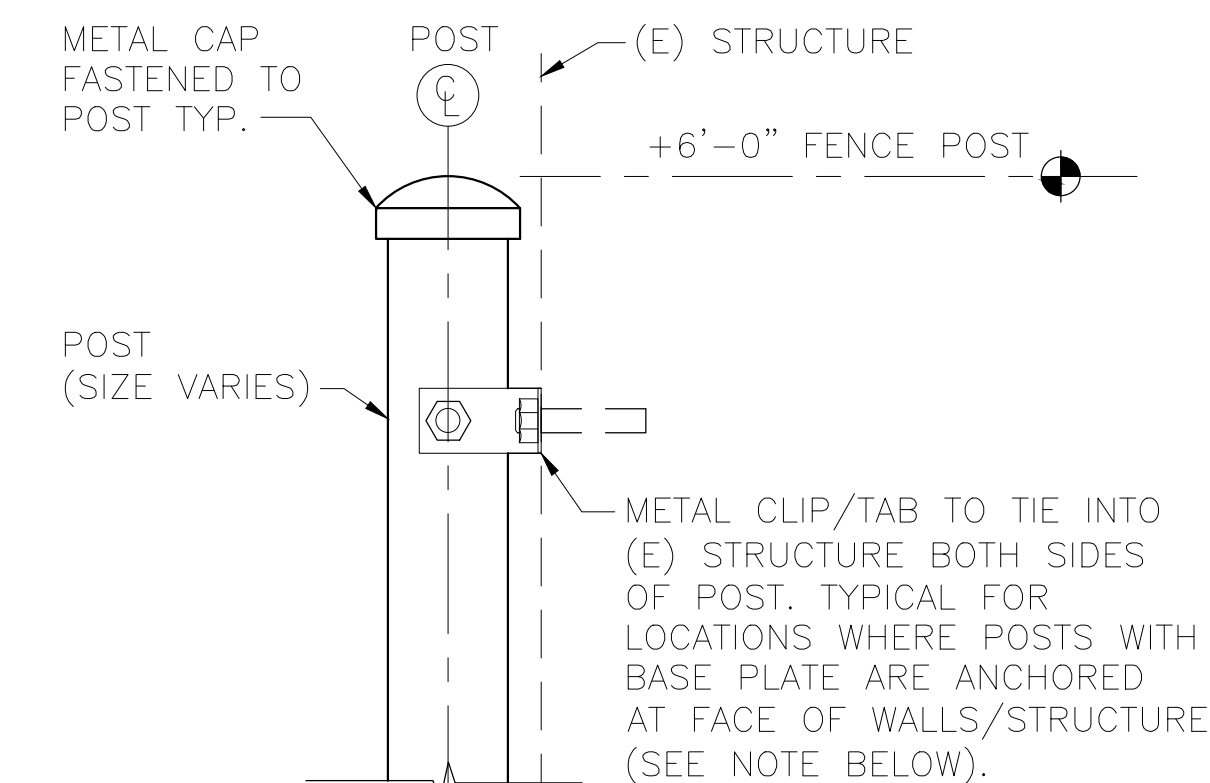
2. WEDGE ANCHORS LISTED ARE HILTI KWIK-BOLT TZ S.S. (MIN.)- IMPERIAL-SIZED STEEL THREADED STUD WITH AN INTEGRAL CONE EXPANDER AND A THREE-SEGMENT EXPANSION CLIP. THE STUD SHALL BE MANUFACTURED FROM CARBON STEEL AND THE EXPANSION CLIP SHALL HAVE TWO UNDERCUTTING EMBOSSEMENTS PER SEGMENT AND BE MANUFACTURED FROM 316 STAINLESS STEEL. ANCHORS SHALL BE INSTALLED FOLLOWING MANUFACTURER INSTRUCTIONS.

7 ANCHOR BOLT NOTES
A4.1 N.T.S.



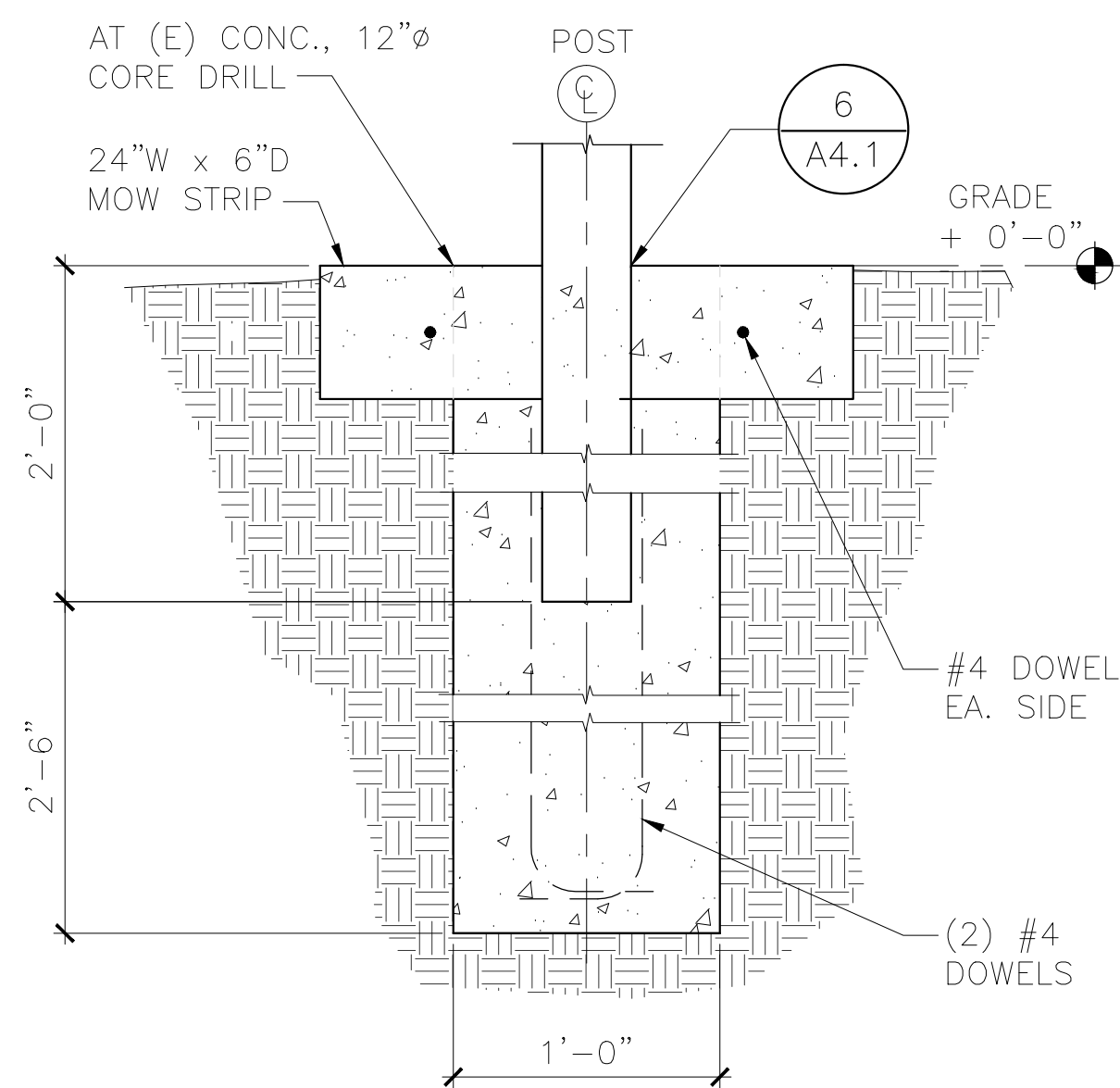
NOTE: FABRICATE HOLES IN PLATE ACCORDING TO SIZE REQUIRED FOR ANCHORS, SEE 7/A4.1

2 OFFSET BASE PLATE DETAIL
A4.1 3" = 1'-0"

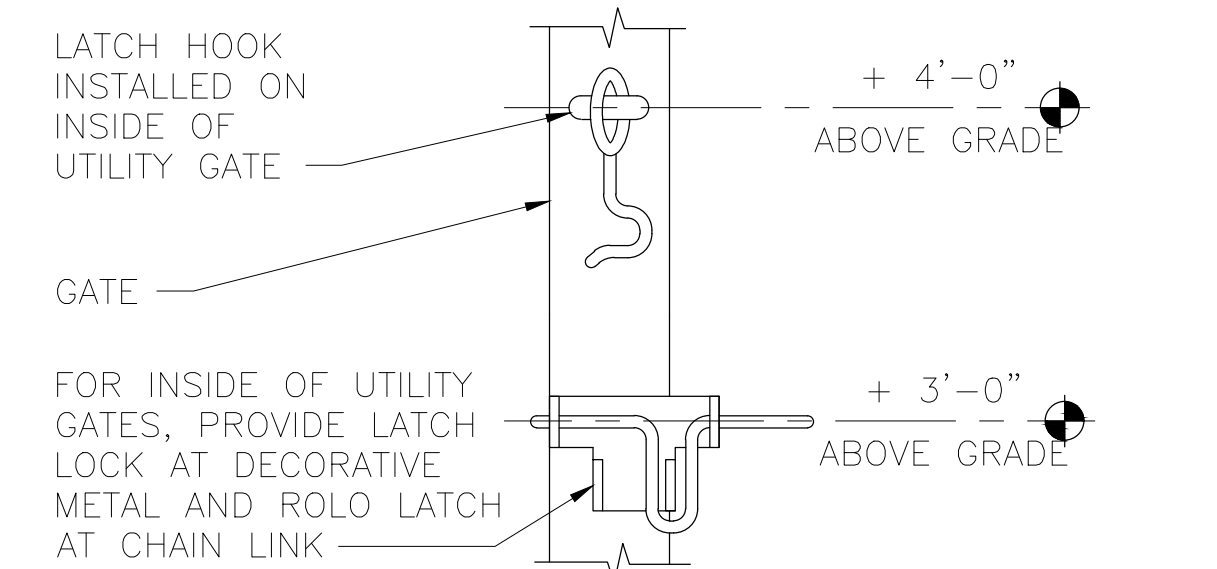


POST "TIE BACK" NOTE: PROVIDE MOUNTING TAB ON POST AT ELEVATION OF CHANNEL RAIL. SECURE TABS TO STRUCTURE WITH A SINGLE BOLT (2 1/2" MIN. DEEP). PROVIDE SPACER (STRUT) BETWEEN POST AND STRUCTURE AND CAULK ALL PENETRATIONS.

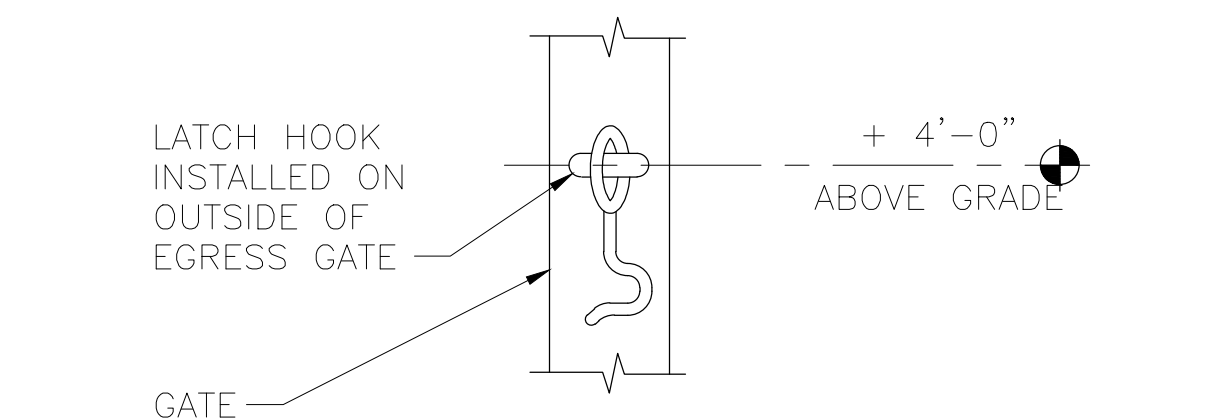
3 POST ATTACHMENT DETAIL
A4.1 3" = 1'-0"



13 HINGE AND STRIKE POST
A4.1 1 1/2" = 1'-0"

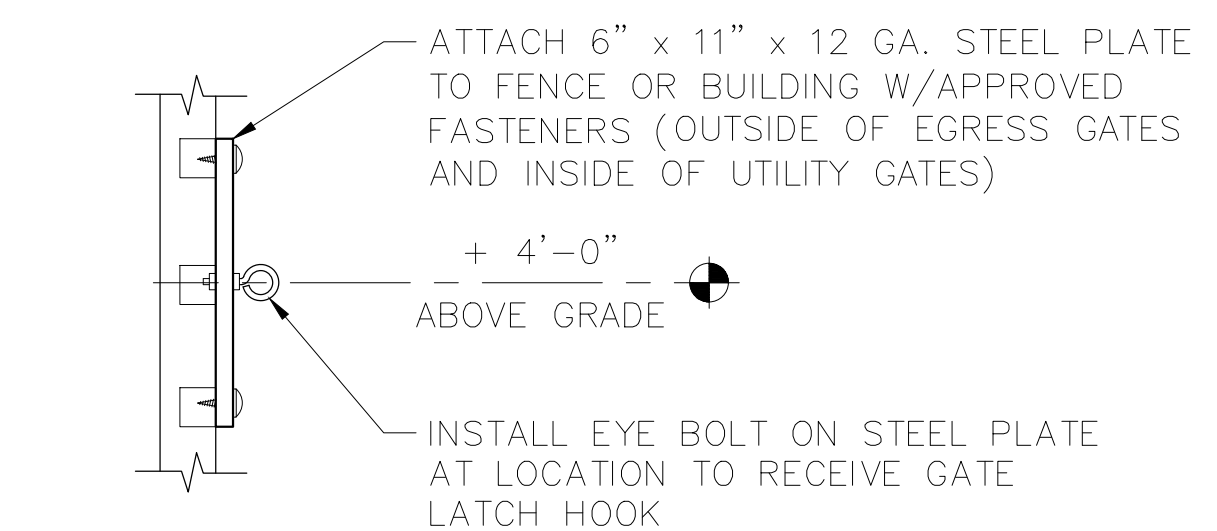


9 UTILITY GATE LATCH LOCK
A4.1 3" = 1'-0"

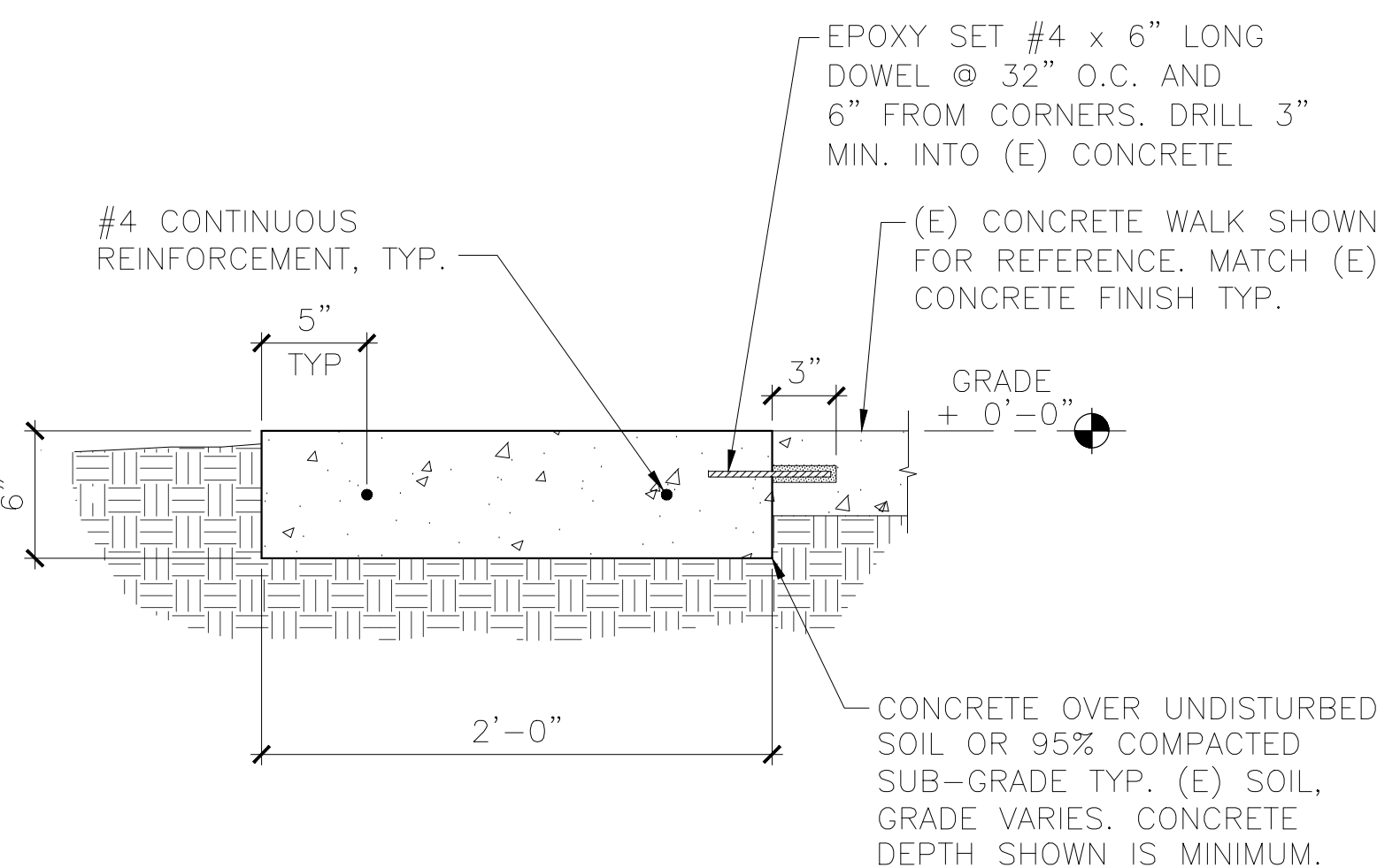


NOTE: GATE LATCH HOOK INSTALLED TO ONLY HOLD GATE OPEN (PER OSSC 1008.1.10)

10 EGRESS GATE LATCH HOOK
A4.1 3" = 1'-0"



11 GATE HOLD-OPEN @ FENCE
A4.1 3" = 1'-0"



14 MOWSTRIP @ (E) SIDEWALK
A4.1 1 1/2" = 1'-0"



LorenBerryArchitect
41601 Madrone Street, Springfield, OR 97478
(541) 896-3692
(541) 896-0231

MULTI-SITE SECURITY FENCING 2018
EUGENE SCHOOL DISTRICT 4J
C.I.P.#420,780.113

DETAILS

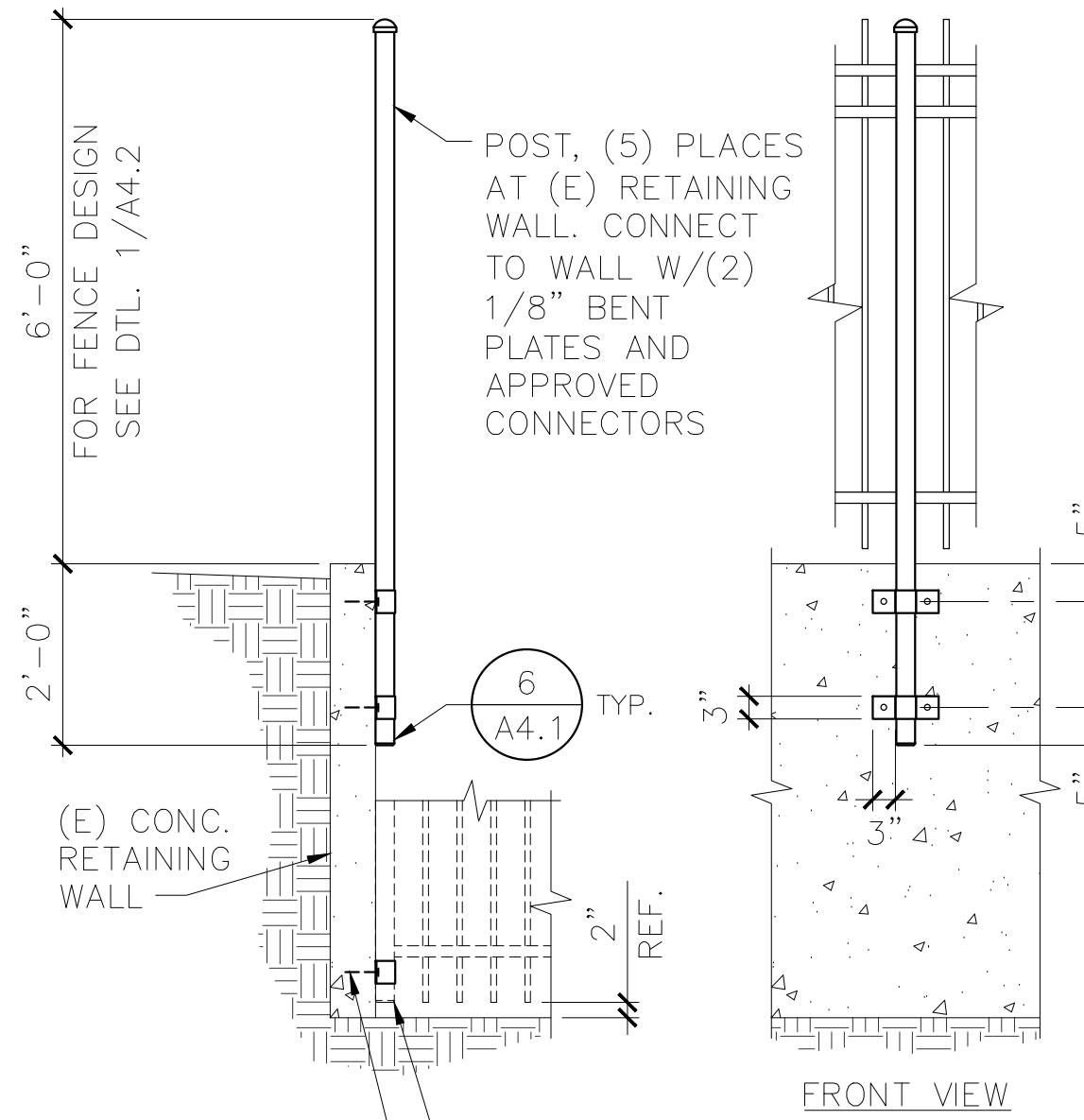
PROJECT NUMBER	1802	
DRAWN	DMT	
CHECKED	LRB	
DATE	5/2/2018	
REVISIONS		
No.	Description	Date

SHEET NUMBER

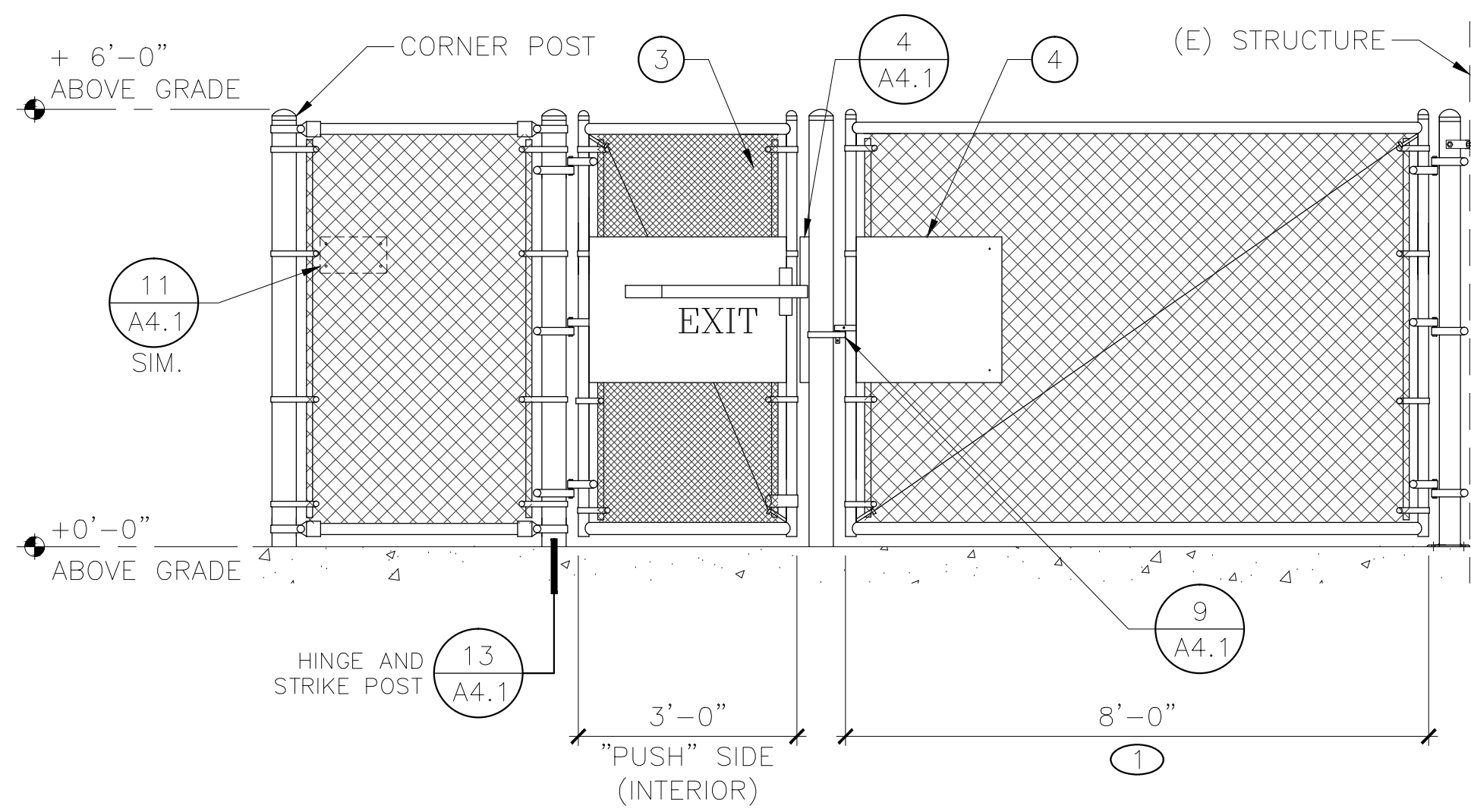
A4.1

KEYED NOTES

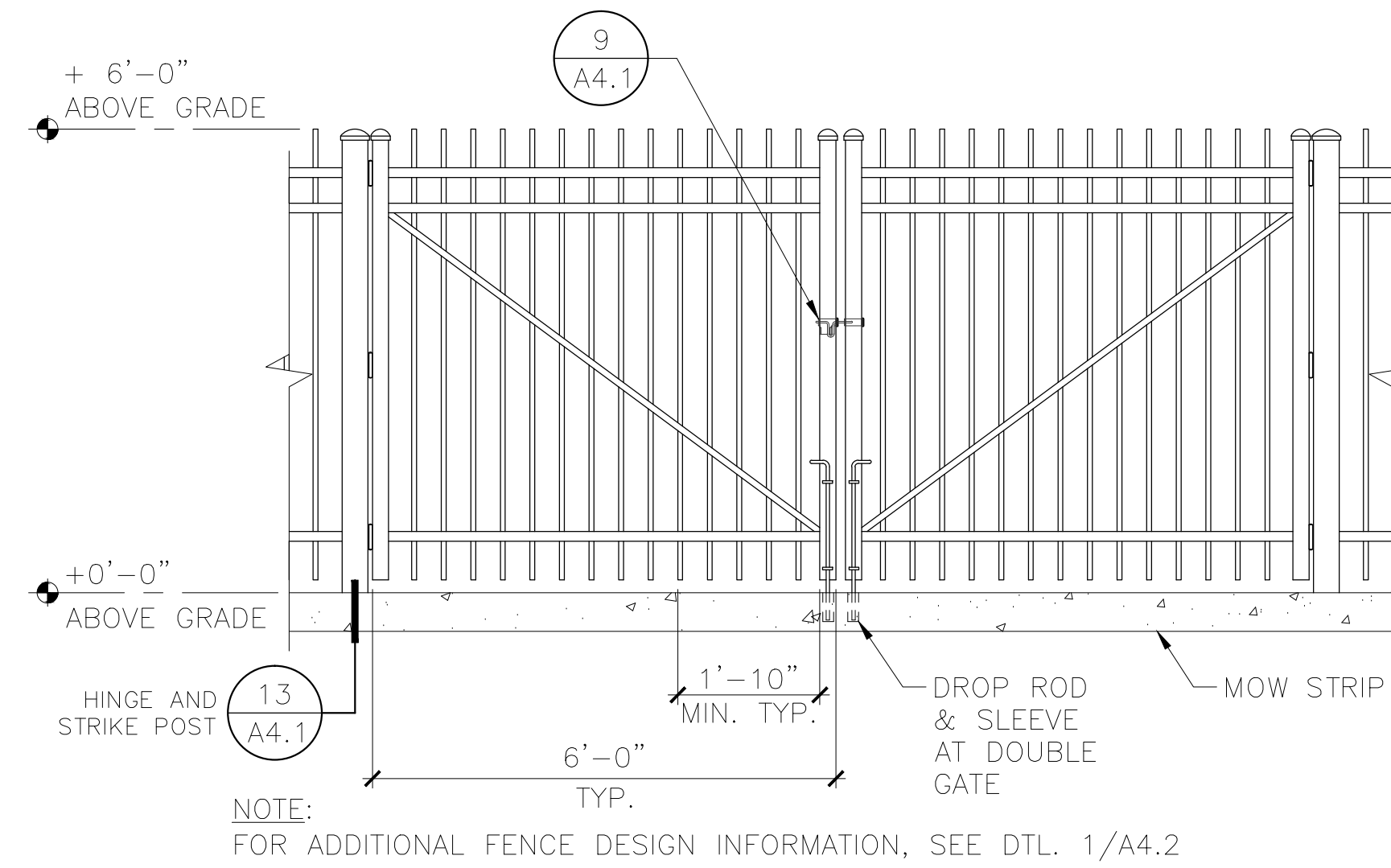
- 1 PANIC HARDWARE MOUNTED TO FACE OF SHEET METAL PANEL, SEE SPECIFICATIONS.
- 2 PROVIDE EXPANDED METAL LATHE SCREEN PANEL ON THE INTERIOR SIDE OF EGRESS GATE. IN ADDITION:
 - PLACE A 1'-10" LENGTH OF SCREEN PANEL TO THE LATCH SIDE OF EACH EGRESS GATE.
 - FASTEN SCREENS WITH MANUFACTURER APPROVED FASTENERS TO THE INSIDE FACE OF GATE AND FENCE PANEL.
 - MATCH FACTORY FINISH OF THE GATE.
- 3 PROVIDE 3/4" DIAMOND INTERWOVEN WIRE AS EGRESS GATE MESH MATERIAL.
- 4 ON INTERIOR SIDE, PLACE A 2'-0" SQ. SHEET METAL PANEL TO THE LATCH SIDE OF EGRESS GATE (ALIGN HEIGHT W/PANEL AT GATE). SPOT WELD PANEL TO POST OR FRAME AND DRILL (2) 3/16" HOLES AS SHOWN FOR ATTACHMENT TO MESH WITH APPROVED WIRE MATERIAL.



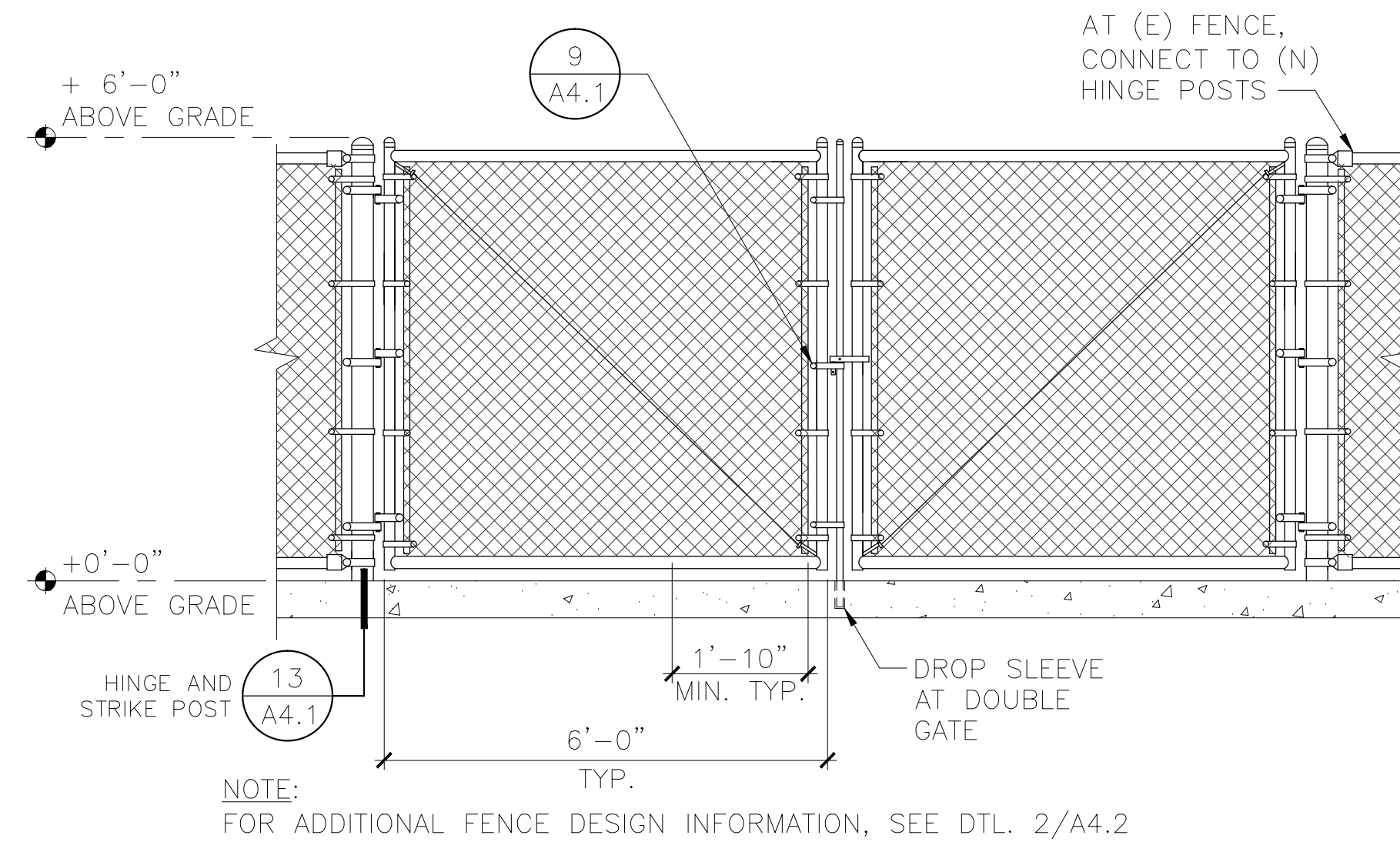
7 FENCE AT RETAINING WALL
 FENCE TYPE 3 - CAMAS RIDGE
 1/2" = 1'-0"



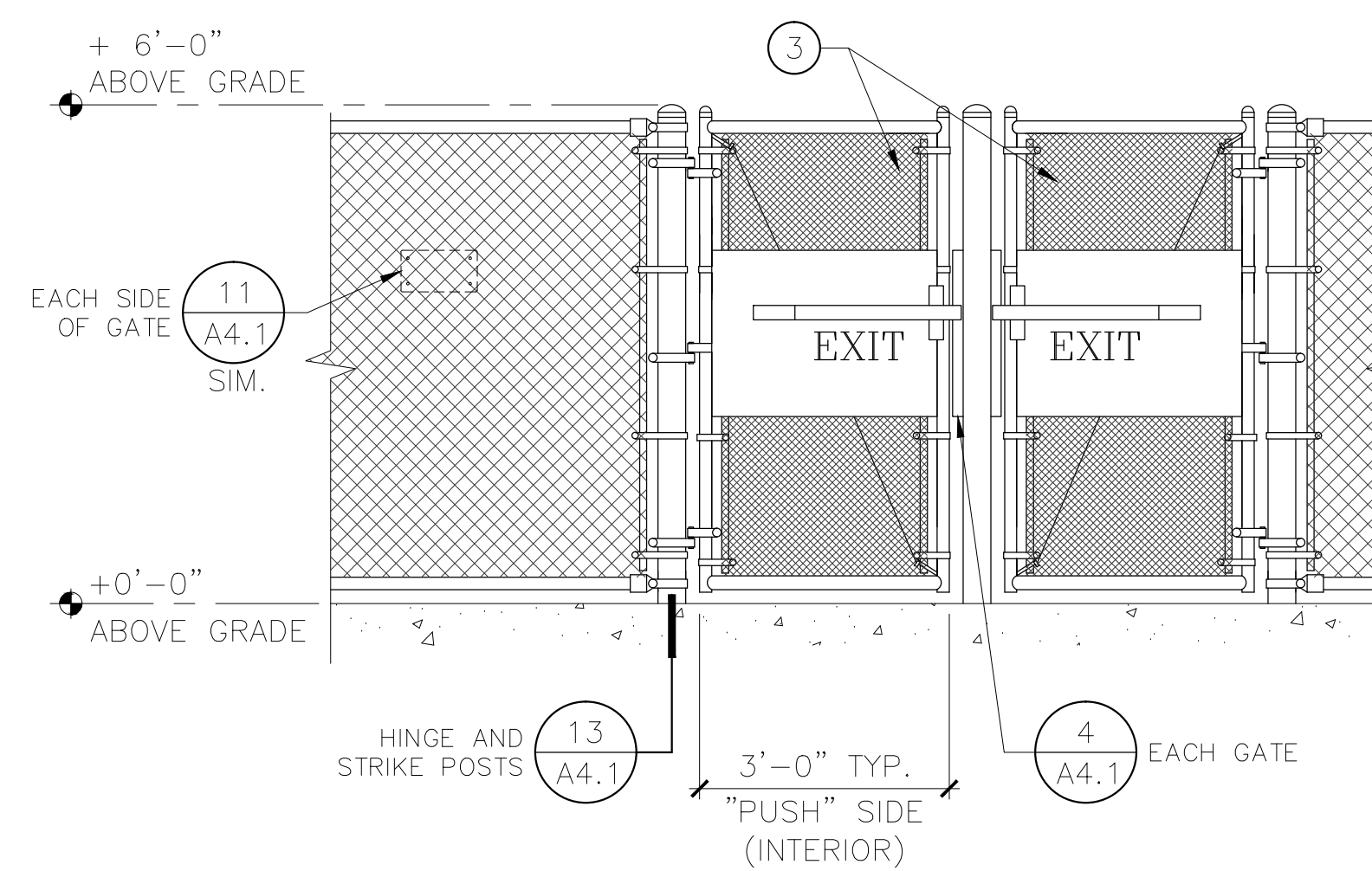
8 UTILITY AND EGRESS GATE
 FENCE TYPE 2 - TWIN OAKS
 1/2" = 1'-0"



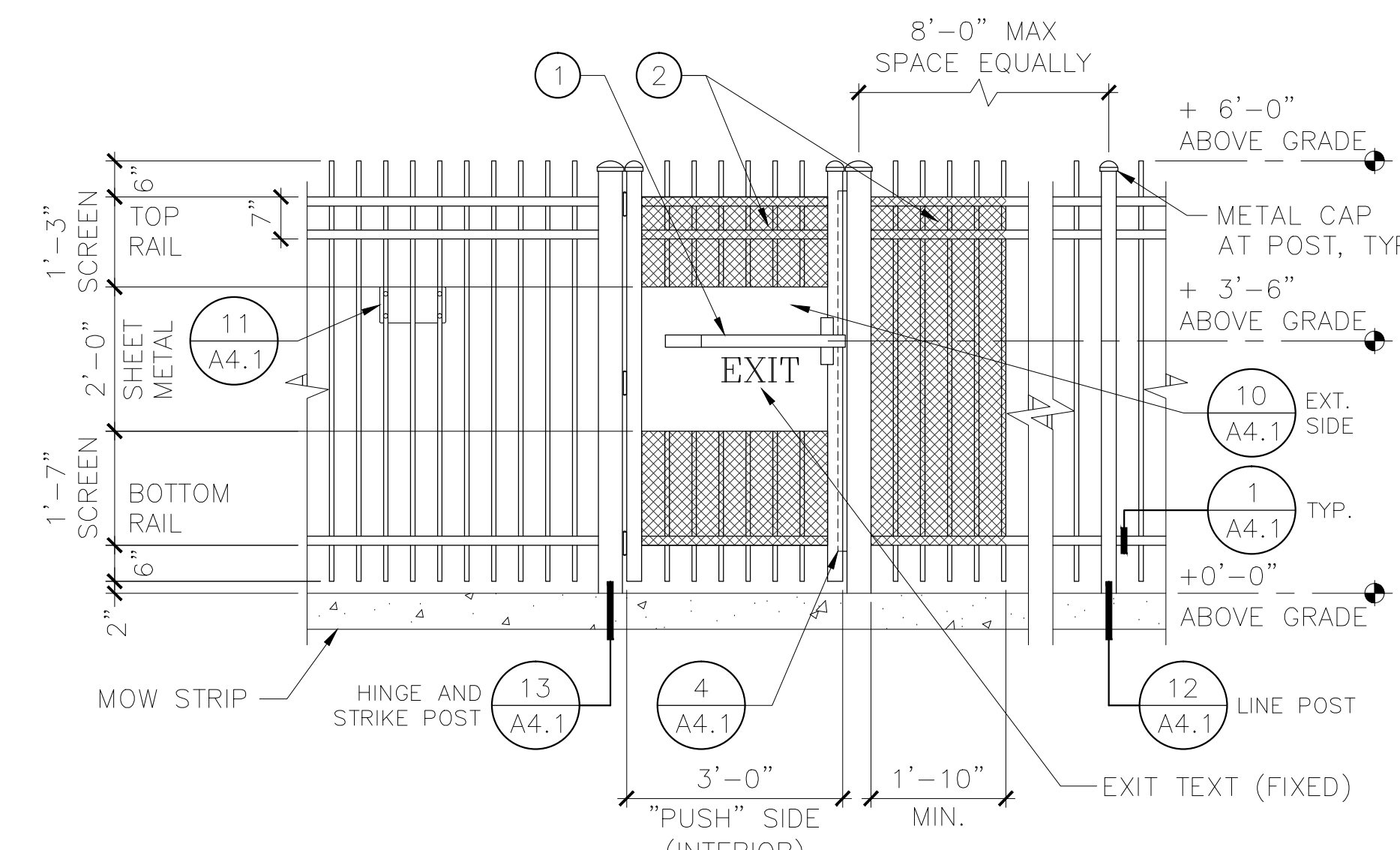
4 TYPICAL UTILITY GATE
 FENCE TYPE 3
 1/2" = 1'-0"



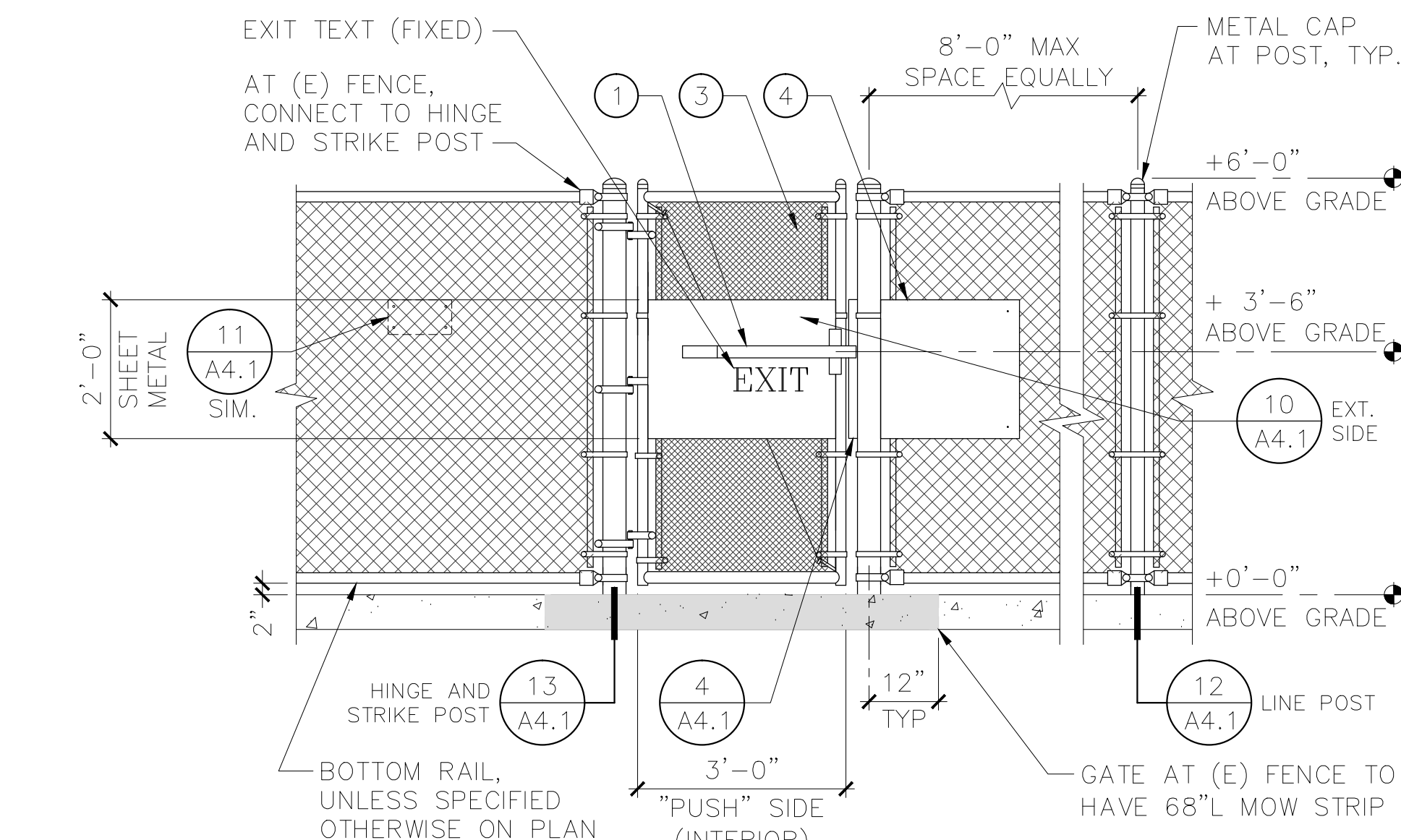
5 TYPICAL UTILITY GATE
 FENCE TYPE 2
 1/2" = 1'-0"



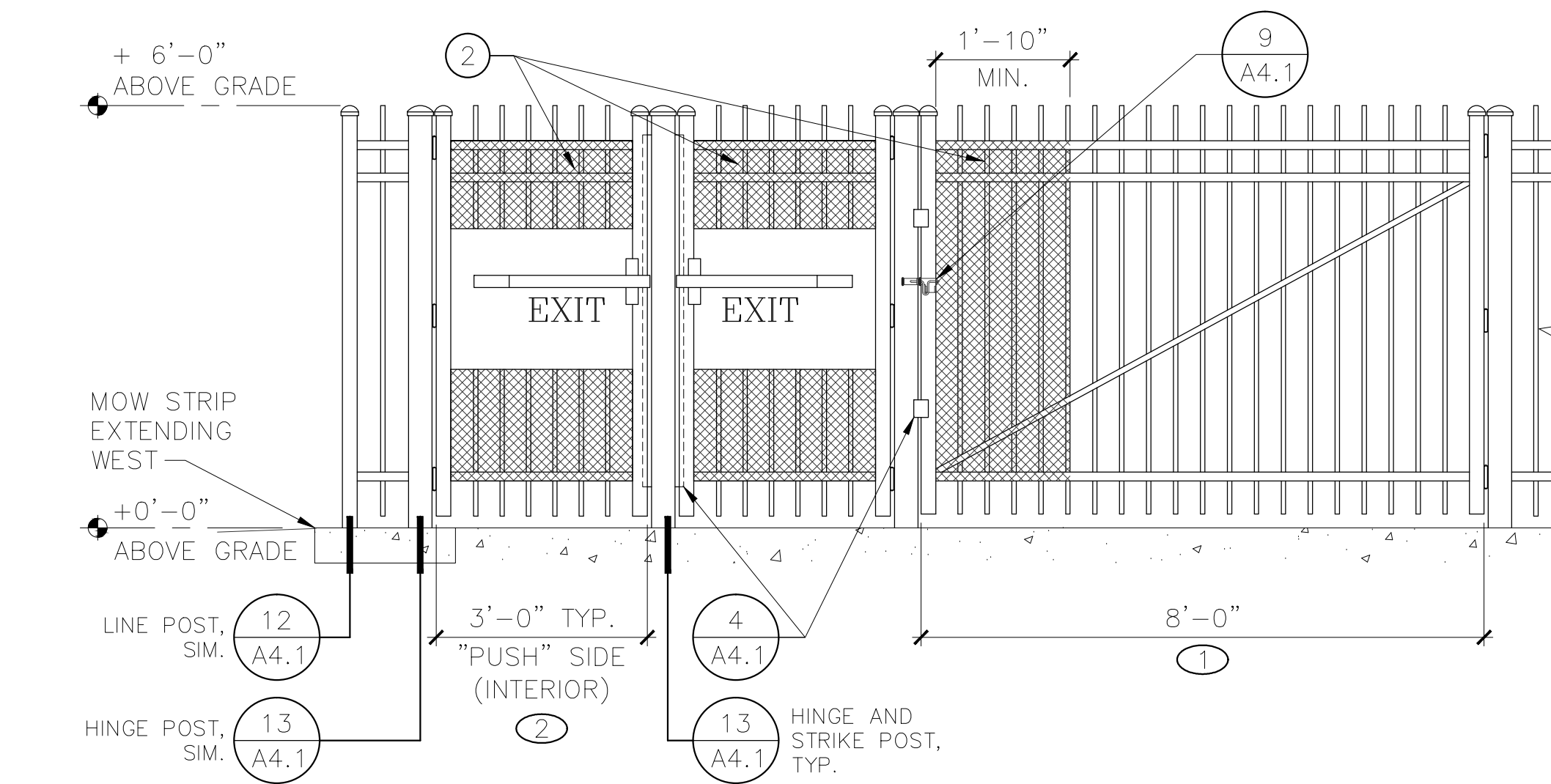
6 EGRESS GATE
 FENCE TYPE 2 - TWIN OAKS
 1/2" = 1'-0"



1 TYPICAL EGRESS GATE
 FENCE TYPE 3
 1/2" = 1'-0"



2 TYPICAL EGRESS GATE
 FENCE TYPE 2
 1/2" = 1'-0"



3 EGRESS AND UTILITY GATES AT GYM
 FENCE TYPE 3 - ADAMS
 1/2" = 1'-0"



LorenBerryArchitect
 41601 Madrone Street, Springfield, OR 97478
 (p) 541.896.3692 (f) 541.896.0231

MULTI-SITE SECURITY FENCING 2018
 EUGENE SCHOOL DISTRICT 4J
 C.I.P.# 420.780.113

DETAILS

PROJECT NUMBER	1802	
DRAWN	DMT	
CHECKED	LRB	
DATE	5/2/2018	
REVISIONS		
No.	Description	Date

SHEET NUMBER
A4.2

SYMBOLS AND ABBREVIATIONS LEGEND

POWER

- NEW CONCEALED RACEWAY AND WIRE. NUMBER OF SLASHES INDICATES NUMBER OF CONDUCTORS IF MORE THAN TWO. SIZE OTHER THAN #12 AS NOTED. (APPLIES TO ALL WIRING SYMBOLS)
- HOMERUN
- SIGNAL WIRING: F = FIRE ALARM, I = INTERCOM, G = LOW VOLTAGE CONTROL, T = TELEPHONE, D = DATA, TV = TELEVISION, P = CLOCK PROGRAM, PC = PHOTO CONTROL
- PANELBOARD
- SWITCH: "a" = CIRCUITS CONTROLLED, "K" = KEY SWITCH, "P" = PILOT LIGHT, "2" = DOUBLE POLE, "3" = THREE-WAY, "M" = AUTOMATIC WALL SWITCH, "D" = DIMMING SWITCH, "TS" = DIGITAL TIMER SWITCH
- JUNCTION BOX
- DUPLEX RECEPTACLE - "WP" = HEATHERPROOF, "SFI" = GROUND FAULT INTERRUPTER TYPE, "M" = MOUNTING HEIGHT, "a" = CIRCUIT, "ISO" = WITH ISOLATED GROUND, "SRG" = WITH SURGE SUPPRESSION, "TP" = TAMPER PROOF COVER, "L" = LOCKING, "H" = HOSPITAL GRADE
- ELECTRICAL EQUIPMENT AS INDICATED ON DRAWINGS

LIGHT FIXTURES

- FIXTURE IDENTIFIER. FIXTURE TYPE "AI" SEE LIGHTING FIXTURE SCHEDULE.
- SURFACE MOUNT FLUORESCENT - DRAWN TO SCALE WHERE POSSIBLE
- RECESSED FLUORESCENT - SHADING INDICATES EMERGENCY BATTERY BALLAST (APPLIES TO ALL LUMINAIRES)
- BOLLARD
- WALL MOUNT FIXTURE
- SURFACE/PENDANT DOWNLIGHT
- UNIVERSAL MOUNT EXIT LIGHT, SHADED SIDE INDICATES FACE OR FACES.

GENERAL

- EQUIPMENT IDENTIFIER, EXHAUST FAN I SHOWN
- SHEET REFERENCE NOTE
- PLAN OR DETAIL NUMBER SHEET NUMBER
- ROOM NUMBER
- EXISTING WORK SHOWN LIGHT
- NEW WORK SHOWN BOLD
- EXISTING TO BE REMOVED

FIRE ALARM

- FIRE ALARM SYSTEM MANUAL PULL STATION
- FIRE ALARM SYSTEM HORN
V = VOICE, WP = HEATHERPROOF
- FIRE ALARM SYSTEM HORN W/ STROBE LIGHT. MOUNT @ 80" AFF.
- FIRE ALARM STROBE
- FIRE ALARM SYSTEM SMOKE DETECTOR
D = DUCT DETECTOR R = RELAY BASE
- COMBINATION FIXED TEMPERATURE AND RATE OF RISE DETECTOR
- FIRE ALARM CONTROL PANEL

ABBREVIATIONS

- | | | | |
|-------|--|------|-------------------------------------|
| AFF | ABOVE FINISHED FLOOR | IDF | INTERMEDIATE DISTRIBUTION FRAME |
| BLDG | BLDG | L.V. | LOW VOLTAGE |
| C | CONDUIT | MDF | MAIN DISTRIBUTION FRAME |
| cd | CANDELA | MECH | MECHANICAL |
| CKT | CIRCUIT | (N) | NEW |
| DIM | O-LOW DIMMING | PNL | PANEL |
| DSP | DIGITAL SIGNAL PROCESSOR | PRS | PROGRAM RAPID START |
| (E) | EXISTING | SHED | SHED |
| ELEC | ELECTRICAL | TIB | TELEPHONE TERMINAL BOARD |
| EMERG | EMERGENCY | TVSS | TRANSIENT VOLTAGE SURGE SUPPRESSION |
| FAM | FIRE ALARM MASTER | TYP | TYPICAL |
| SFI | GROUND FAULT INTERRUPTER | W/G | W/REGIARD |
| GND | GROUND | WP | WEATHERPROOF |
| HVAC | HEATING, VENTILATING, & AIR CONDITIONING | | |

GENERAL NOTES:

1. THE FACILITY MAY BE OCCUPIED DURING CONSTRUCTION. COORDINATE ALL SHUTDOWNS AND CONSTRUCTION ACTIVITY WITH FACILITIES STAFF.
2. SIZE AND LOCATION OF ALL EXISTING ELECTRICAL EQUIPMENT IS APPROXIMATE. SITE VERIFY THE EXACT LOCATION OF EXISTING AND CONSTRUCT ALL WORK FROM FIELD DIMENSIONS. MAKE ADJUSTMENTS NECESSARY TO ACCOMMODATE MINOR DEVIATIONS AT NO COST TO OWNER.
3. LIGHT LINE WORK INDICATES EXISTING ELECTRICAL CIRCUITRY AND OTHER ELECTRICAL EQUIPMENT. ELECTRICAL DEVICES AND EQUIPMENT TO BE REMOVED AS NOTED.
4. WHERE EXISTING EQUIPMENT IS REMOVED AND NOT REPLACED IN THE SAME LOCATION, PATCH AND PAINT SURFACES TO MATCH ORIGINAL CONDITION.
5. REMOVE ALL ABANDONED RACEWAY AND WIRING.
6. RECONNECT ALL CIRCUITRY TO REMAINING DEVICES AND EQUIPMENT.
7. PROVIDE HANDLE-TIES FOR ALL BREAKERS THAT SERVE CIRCUITS WITH COMMON NEUTRALS PER NEC.

JLG Engineering, LLC
1907 Gordon Ave, Suite 200
Eugene, Oregon 97405
Phone: (541)412-0065

LorenBerryArchitect
41601 Madrone Street, Springfield, OR 97476
(541) 541-596-3692
(541) 541-596-0231

LUMINAIRE SCHEDULE				
TYPE	DESCRIPTION	EXAMPLE MANUFACTURER	LAMP	NOTES
A	VANDAL RESISTANT FLUORESCENT OVAL	LUMINAIRE XOV13-IPLT32-120-OP-WHT GAB	032W TRT 82 CRI 4100 CCT (35W)	MOUNTING :SURFACE HOUSING :INJECTION MOLDED POLYCARBONATE LENS/REFL.:CLEAR POLYCARBONATE VOLTAGE :120/277 BALLAST :ELECTRONIC MISC :400 LUMEN EMERGENCY BATTERY PACK (WHERE NOTED) CAST ALUMINUM BACKBOX
B	LED WALL LUMINAIRE	LITHONIA DSXW2-LED 30C 1000 50K-T2M-MVOLT-BBW PE-V6-DBLDXD	LED 6000K 65 CRI 9244 LUMEN (104W)	MOUNTING :SURFACE, 10' AFF HOUSING :TWO-PIECE DIE-CAST ALUMINUM LENS/REFL.: VOLTAGE :120/277 BALLAST :ELECTRONIC MISC :INDEPENDENT TESTING TO LMTM AND LM80 INTEGRAL PHOTOCELL
BE	LED WALL LUMINAIRE	LITHONIA DSXW2-LED 30C 1000 50K-T2M-MVOLT-BBW PE-V6-DBLDXD	LED 6000K 65 CRI 9244 LUMEN (104W)	MOUNTING :SURFACE, 10' AFF HOUSING :TWO-PIECE DIE-CAST ALUMINUM LENS/REFL.: VOLTAGE :120/277 BALLAST :ELECTRONIC MISC :INDEPENDENT TESTING TO LMTM AND LM80 EM BATTERY PACK / INTEGRAL PHOTOCELL
X	DISTRICT STANDARD EXIT SIGN	LITHONIA LV5-IR120/277-ELN -UM-SD	RED LED (33W)	MOUNTING :UNIVERSAL MOUNT HOUSING :CAST ALUMINUM LENS/REFL.:POLYCARBONATE VOLTAGE :120/277 BALLAST : MISC :EMERGENCY BATTERY PACK

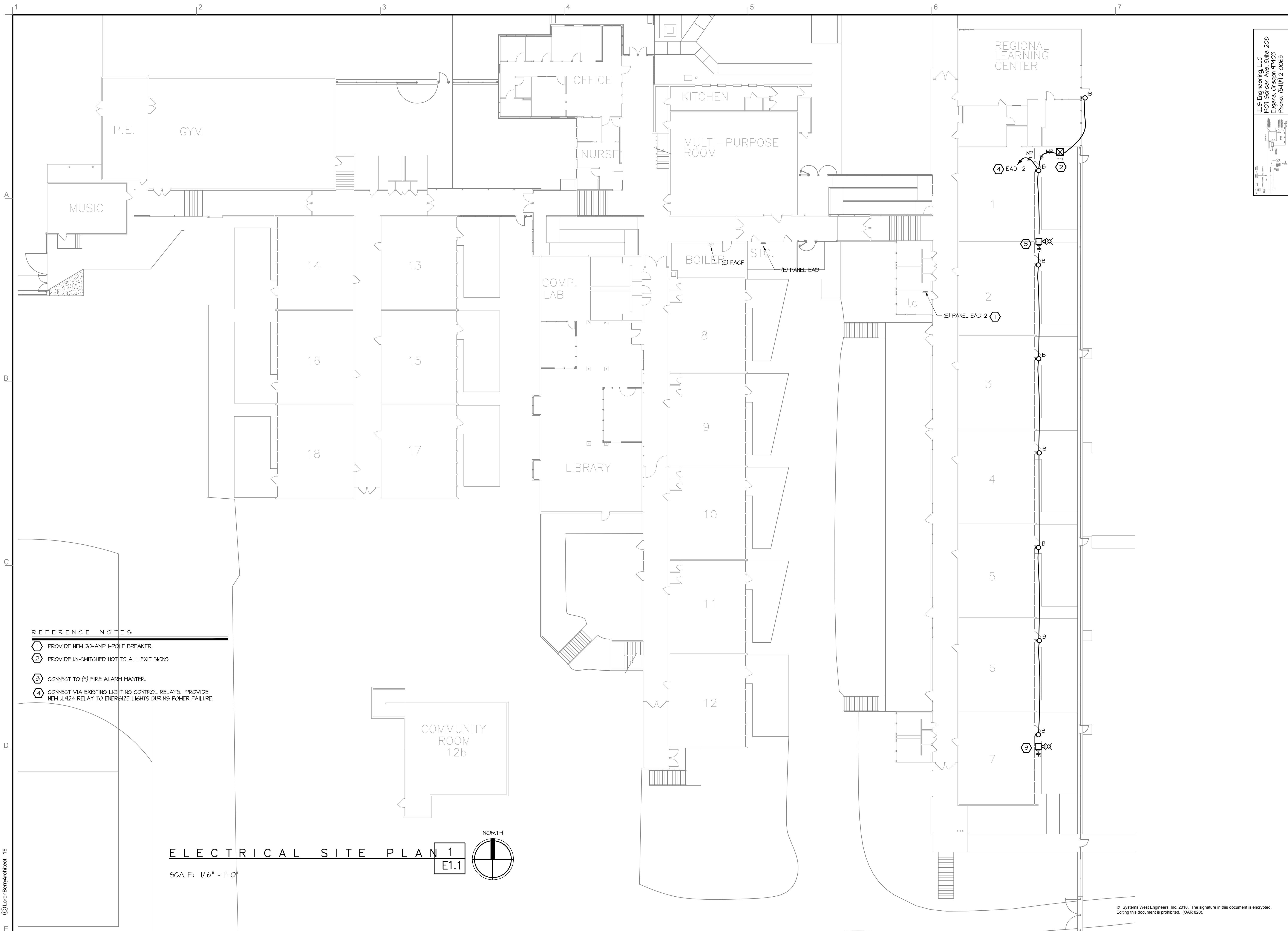
MULTI-SITE SECURITY FENCING 2018
EUGENE SCHOOL DISTRICT 4J
C.I.P. #420.780.113

SYMBOLS AND SCHEDULES
ELECTRICAL

PROJECT NUMBER	1802	
DRAWN	JLG	
CHECKED	JLG	
DATE	5/2/2018	
REVISIONS		
No.	Description	Date

SHEET NUMBER

E1.0



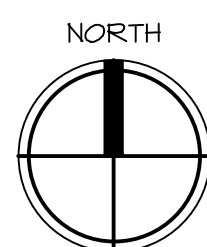
REFERENCE NOTES:

- ① PROVIDE NEW 20-AMP 1-POLE BREAKER.
- ② PROVIDE UN-SWITCHED HOT TO ALL EXIT SIGNS
- ③ CONNECT TO (E) FIRE ALARM MASTER.
- ④ CONNECT VIA EXISTING LIGHTING CONTROL RELAYS. PROVIDE NEW UL924 RELAY TO ENERGIZE LIGHTS DURING POWER FAILURE.

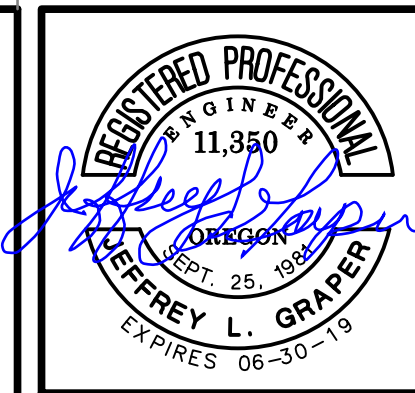
ELECTRICAL SITE PLAN 1

E1.1

SCALE: 1/16" = 1'-0"



JLG Engineering, LLC
 1021 Gordon Ave. Suite 208
 Eugene, Oregon 97403
 Phone: (541) 412-0005



LorenBerryArchitect
 41601. Madrone Street, Springfield, OR 97478
 (p) 541-896-3692

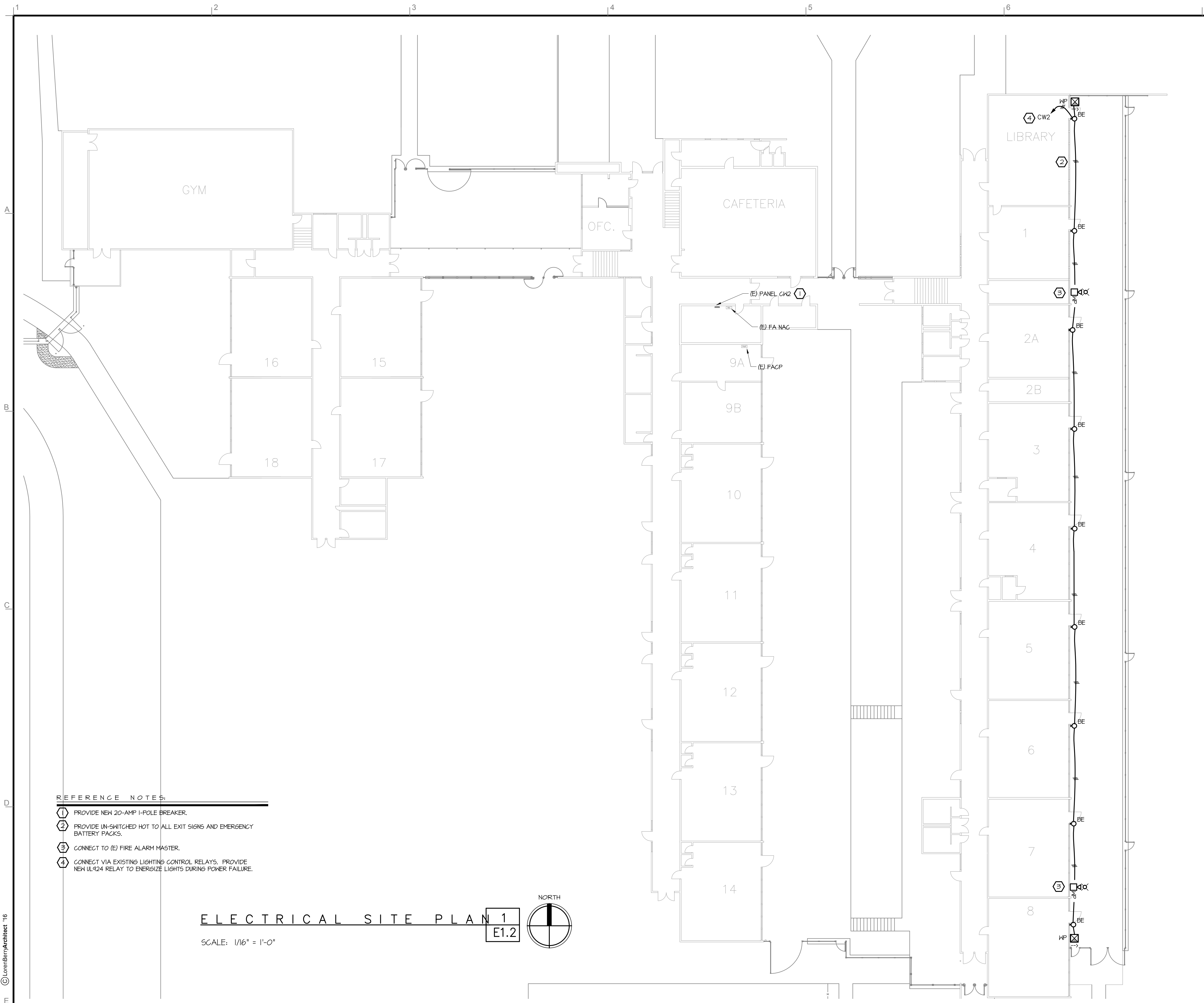
MULTI-SITE SECURITY FENCING 2018
 EUGENE SCHOOL DISTRICT 4J
 C.I.P. #420.780.113

SITE PLAN
 ADAMS ELEMENTARY SCHOOL

PROJECT NUMBER	1802
DRAWN	JLG
CHECKED	JLG
DATE	5/2/2018

REVISIONS		
No.	Description	Date

SHEET NUMBER
E1.1

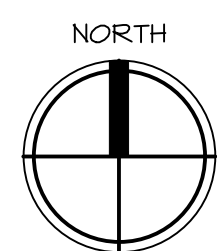


REFERENCE NOTES:

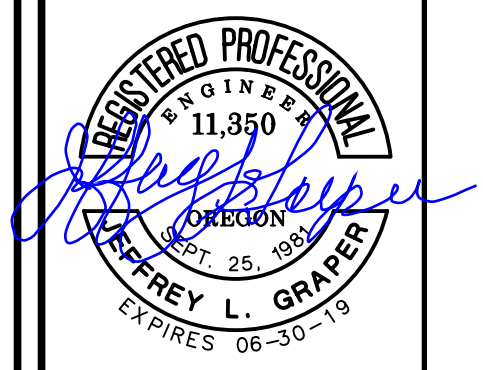
- ① PROVIDE NEW 20-AMP 1-POLE BREAKER.
- ② PROVIDE UN-SWITCHED HOT TO ALL EXIT SIGNS AND EMERGENCY BATTERY PACKS.
- ③ CONNECT TO (E) FIRE ALARM MASTER.
- ④ CONNECT VIA EXISTING LIGHTING CONTROL RELAYS. PROVIDE NEW UL424 RELAY TO ENERGIZE LIGHTS DURING POWER FAILURE.

ELECTRICAL SITE PLAN 1
E1.2

SCALE: 1/16" = 1'-0"



JLG Engineering, LLC
 1807 Garden Ave. Suite 200
 Eugene, Oregon 97403
 Phone: (541)412-0065



LorenBerryArchitect
 41601 Madrone Street, Springfield, OR 97478
 (p) 541-896-3692 (f) 541-896-0231

MULTI-SITE SECURITY FENCING 2018
 EUGENE SCHOOL DISTRICT 4J
 C.I.P. #420.780.113

SITE PLAN
 CAMUS RIDGE ELEMENTARY SCHOOL

PROJECT NUMBER	1802	
DRAWN	JLG	
CHECKED	JLG	
DATE	5/2/2018	
REVISIONS		
No.	Description	Date

SHEET NUMBER
E1.2