



THE DOCUMENT AND THE IDEAS AND DESIGNS INCORPORATED HEREIN ARE THE PROPERTY OF RODD HANSEN ARCHITECT, LLC, AND IS NOT TO BE USED, IN WHOLE OR PART, FOR ANY OTHER PROJECT WITHOUT THE WRITTEN AUTHORIZATION OF RODD HANSEN ARCHITECT, LLC

MADISON STREET

RODD HANSEN ARCHITECT, LLC
 1551 Oak Street Suite A
 Eugene, Oregon 97401
 Phone: (541)-681-1900
 Fax: (541)-681-1200
 E-Mail: office@harchitectural.com

FACILITIES MANAGEMENT - PAINT BOOTH
 4J SCHOOL DISTRICT

715 W. 4TH AVENUE
 EUGENE, OR 97401

TITLE:	
JOB #:	1317.01242018
DRAWN BY:	RH
DATE:	04-03-2018
SCALE:	

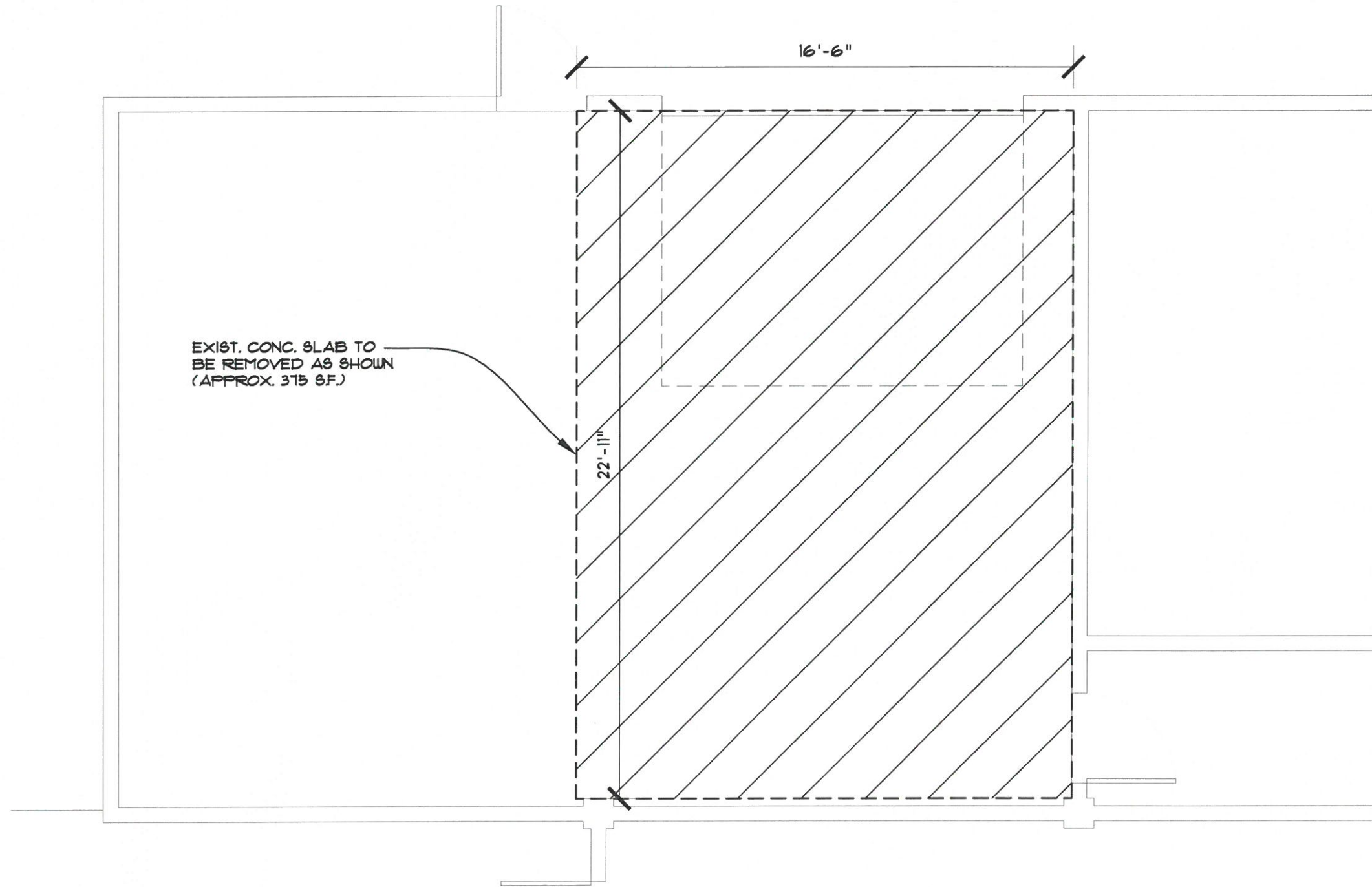


SITE PLAN / KEY PLAN (FOR REFERENCE)



W. 4TH AVENUE

A3.1a



1 DEMOLITION PLAN (PARTIAL)



THE DOCUMENT AND THE IDEAS AND DESIGNS INCORPORATED HEREIN ARE THE PROPERTY OF RODD HANSEN ARCHITECT, LLC, AND IS NOT TO BE USED, IN WHOLE OR PART, FOR ANY OTHER PROJECT WITHOUT THE WRITTEN AUTHORIZATION OF RODD HANSEN ARCHITECT, LLC

RODD HANSEN ARCHITECT, LLC
 RODD HANSEN ARCHITECT, LLC

1551 Oak Street Suite A
 Eugene, Oregon 97401
 Phone: (541)-681-1600
 Fax: (541)-681-1200
 E-Mail: office@harchitectural.com

FACILITIES MANAGEMENT - PAINT BOOTH
 4J SCHOOL DISTRICT

715 W. 4TH AVENUE
 EUGENE, OR 97401

TITLE:	
JOB #:	1317.01242018
DRAWN BY:	RH
	--
DATE:	04-03-2018
SCALE:	

A3.1b



THE DOCUMENT AND THE IDEAS AND DESIGNS INCORPORATED HEREIN ARE THE PROPERTY OF RODD HANSEN ARCHITECT, LLC, AND IS NOT TO BE USED, IN WHOLE OR PART, FOR ANY OTHER PROJECT WITHOUT THE WRITTEN AUTHORIZATION OF RODD HANSEN ARCHITECT, LLC

RODD HANSEN ARCHITECT, LLC
 ARCHITECT, LLC

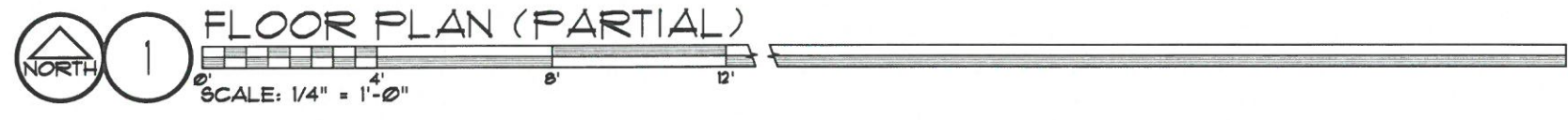
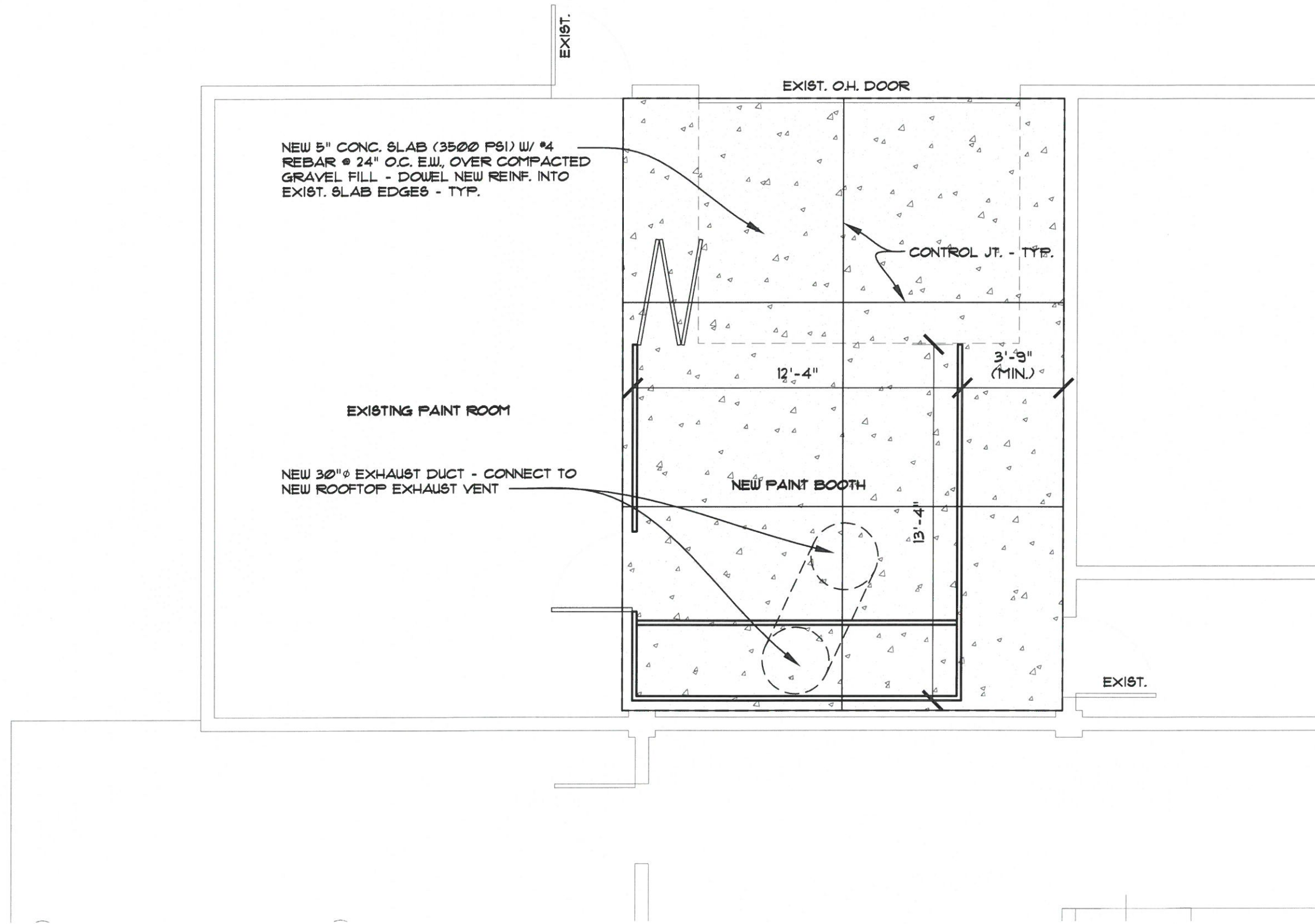
1551 Oak Street Suite A
 Eugene, Oregon 97401
 Phone: (541)-681-1900
 Fax: (541)-681-1200
 E-Mail: office@harchitectural.com

FACILITIES MANAGEMENT - PAINT BOOTH
 4J SCHOOL DISTRICT

715 W. 4TH AVENUE
 EUGENE, OR 97401

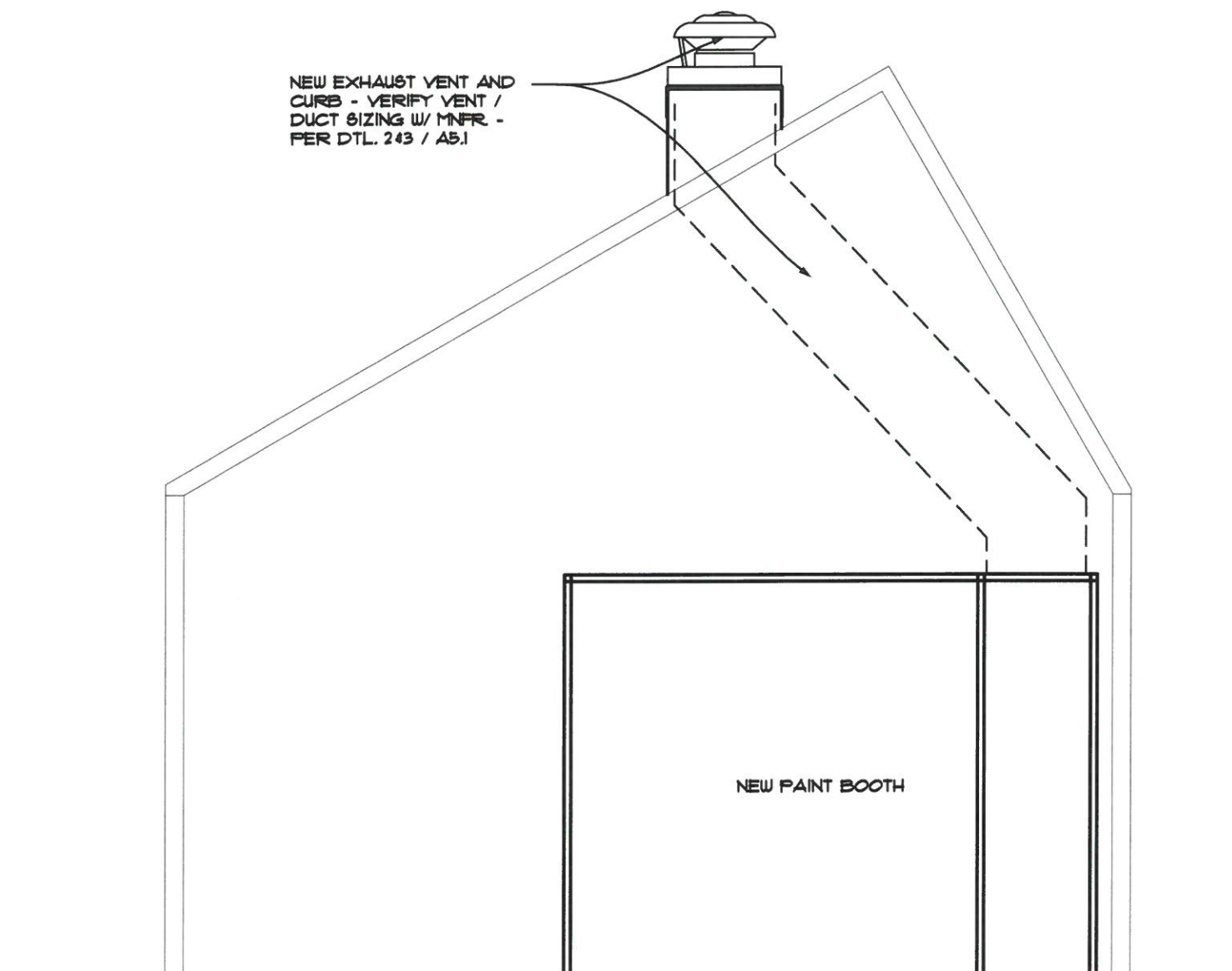
TITLE:	
JOB #:	1317.01242018
DRAWN BY:	RH
DATE:	04-03-2018
SCALE:	

A3.1c

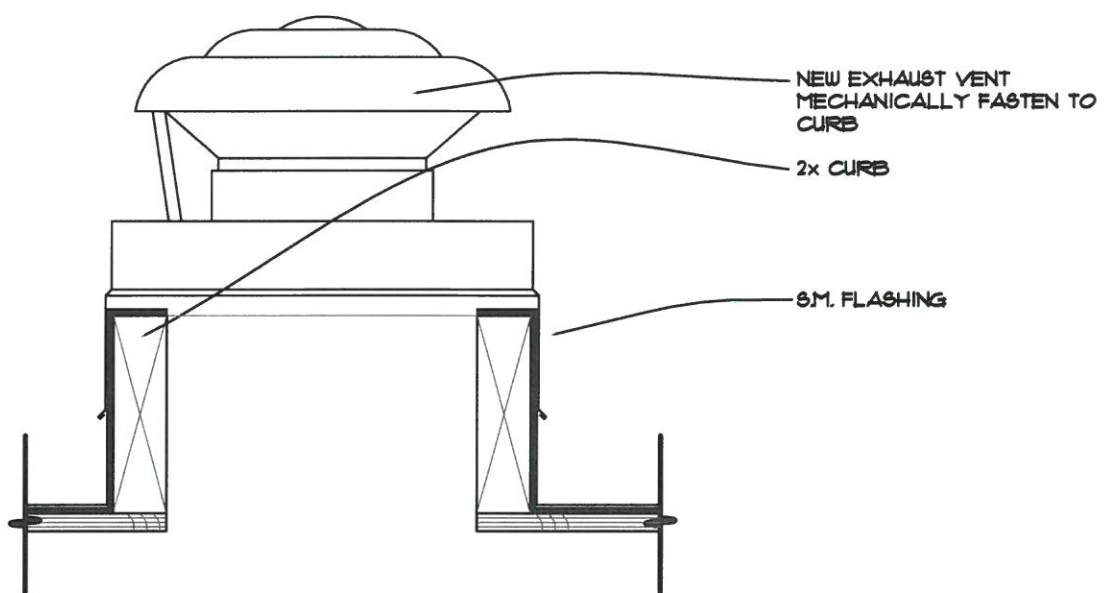


FLOOR PLAN (PARTIAL)

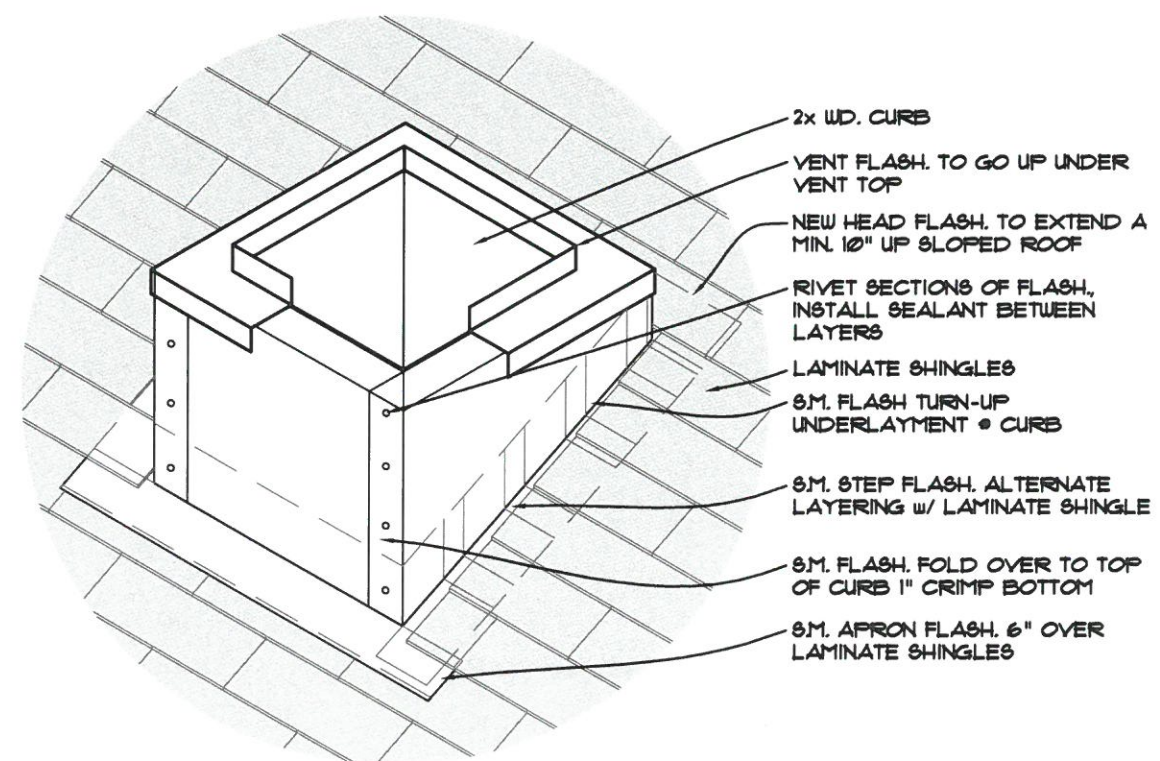
NEW EXHAUST VENT AND CURB - VERIFY VENT / DUCT SIZING W/ MNFR - PER DTL. 243 / A5.1



1 BUILDING SECTION (PARTIAL)
SCALE: 1/4" = 1'-0"



2 DETAIL
SCALE: 3/4" = 1'-0"



3 DETAIL
SCALE: 3/4" = 1'-0"



THE DOCUMENT AND THE IDEAS AND DESIGNS INCORPORATED HEREIN ARE THE PROPERTY OF RODD HANSEN, ARCHITECT, LLC, AND IS NOT TO BE USED, IN WHOLE OR PART, FOR ANY OTHER PROJECT WITHOUT THE WRITTEN AUTHORIZATION OF RODD HANSEN, ARCHITECT, LLC.

RODD HANSEN ARCHITECT, LLC

1951 Oak Street, Suite A
Eugene, Oregon 97401
Phone: (541) 687-1800
Fax: (541) 687-1200
E-Mail: office@harchitectural.com

FACILITIES MANAGEMENT - PAINT BOOTH

4J SCHOOL DISTRICT

715 W. 4TH AVENUE
EUGENE, OR 97401

TITLE:	
JOB #:	1317.01242018
DRAWN BY:	RH
DATE:	04-03-2018
SCALE:	

A5.1