

CHAVEZ PARKING LOT 2018

Addendum 01
April 20, 2018

This Addendum forms a part of the Contract Documents and modifies the original Quotation Documents as noted below. Acknowledge receipt of this Addendum in the space provided on the Bid Form. Failure to do so may subject the bidder to disqualification.

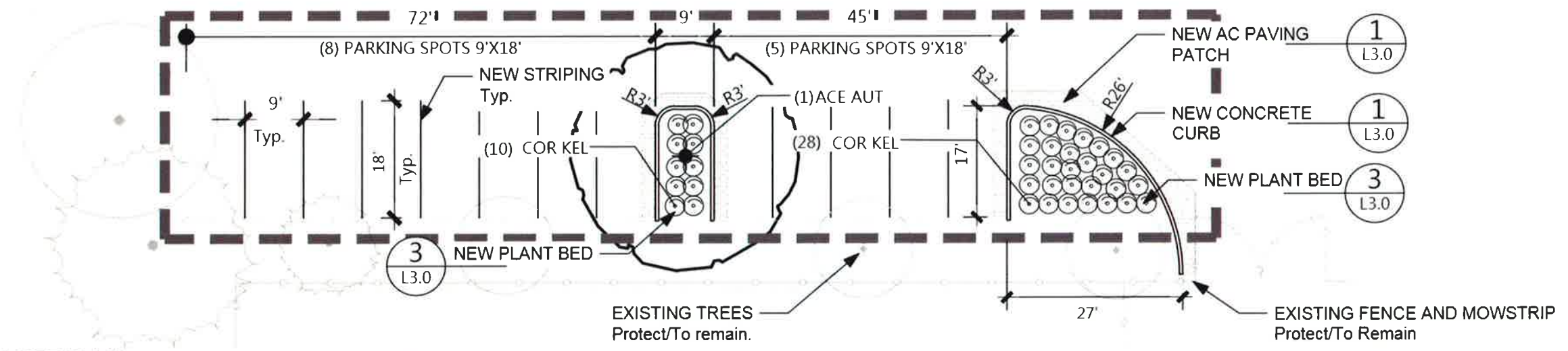
- 1 CHANGES AND CLARIFICATIONS TO THE DRAWINGS
 - A L2.0 Partial Site Plan (re-issued, attached)
 1. REVISE Legend – Plant Bed to read 24" min. depth.
 2. ADD Plant List.

Drawings and Attachments

- A L2.0 Partial Site Plan

End of Addendum

**CHAVEZ ELEMENTARY SCHOOL
 PARKING IMPROVEMENT**
 C.I.P. # 420.320.008
 EUGENE SCHOOL DISTRICT 4J
 1510 W 14TH AVENUE
 EUGENE, OREGON 97402



PARTIAL SITE PLAN
 Scale: 1" = 20' 1

LEGEND

- PROJECT LIMIT LINE
- CONCRETE CURB 1 L3.0
- PROPOSED TREE CENTER See Planting and Irrigation Plan 3 L3.0
- AC PAVING PATCH 1 L3.0
- PLANT BED 3 L3.0
 - 24" min. depth
 - Rexius Primary Planting Soil, Lane Forest Frugal Mix, or approved.
- 15' DIMENSION
- 15' DIMENSION From Face of Existing Curb

GENERAL NOTES
 See Sheet L1.0

PLANT LIST

TREES	QTY	BOTANICAL NAME	COMMON NAME	CONT	CAL
ACE AUT	1	Acer rubrum 'Autumn Flame'	Autumn Flame Maple	B & B	2" Cal

SHRUBS	QTY	BOTANICAL NAME	COMMON NAME	SIZE	SPACING
COR KEL	38	Cornus sericea 'Kelseyi'	Kelseyi Dogwood	#3	36" o.c.



Project #: 1769B
 Date: Apr. 11, 2018
 Revisions:
 ADD 1 4/20/18

100%
 CONSTRUCTION
 DOCUMENTS
 SITE PLAN

