

## ROOSEVELT CONNECTING DRIVE 2018

Addendum 01  
January 31, 2018

---

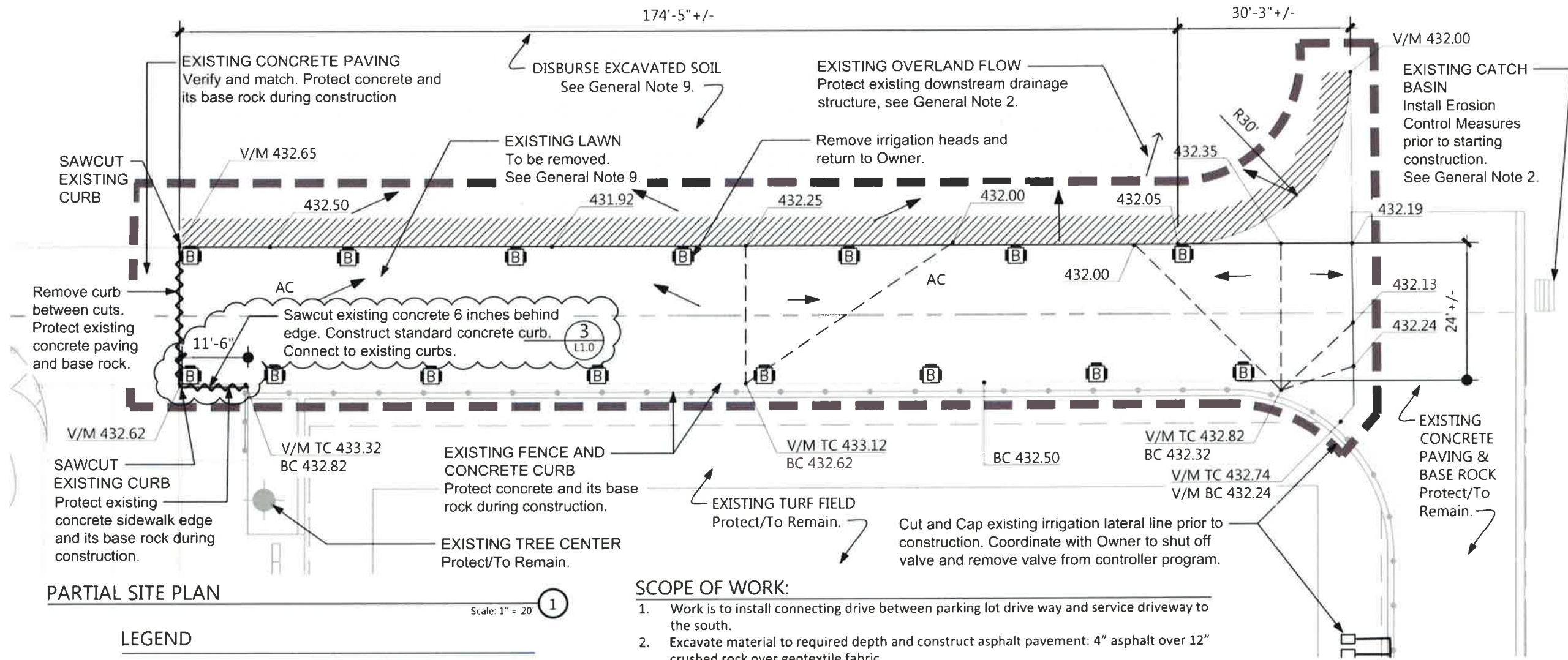
This Addendum forms a part of the Contract Documents and modifies the original Quotation Documents as noted below. Acknowledge receipt of this Addendum in the space provided on the Bid Form. Failure to do so may subject the bidder to disqualification.

- 1 CHANGES AND CLARIFICATIONS TO THE DRAWINGS
    - A. L1.0 Site Plan (re-issued, attached)
      1. ADD Sawcut of existing concrete and construction of standard curb at existing concrete sidewalk.
      2. ADD detail 3/I.10 – Standard Concrete Curb.
      3. REVISE General Note 9.
      4. ADD General Note 10.
- 

Drawings and Attachments

- A. L1.0 Site Plan

End of Addendum



**LEGEND**

	PROJECT LIMIT LINE
	AC PAVING See General Note 9.
	FILTER STRIP 3" min. depth. Seed with Futura 3000 by Pickseed, Tangent OR.
	LAWN REPAIR Seeding under separate contract.
	DIMENSION From Face of Curb
	ELEVATION TC = Top of Curb BC = Bottom of Curb V/M = Verify and Match
	ELEMENT TO BE REMOVED
	EXISTING IRRIGATION HEAD Salvage and return to Owner.

**SCOPE OF WORK:**

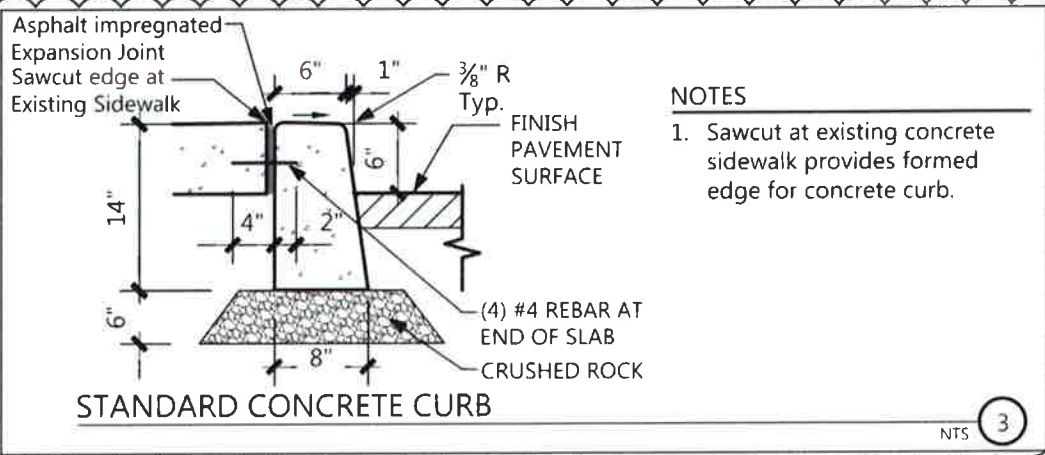
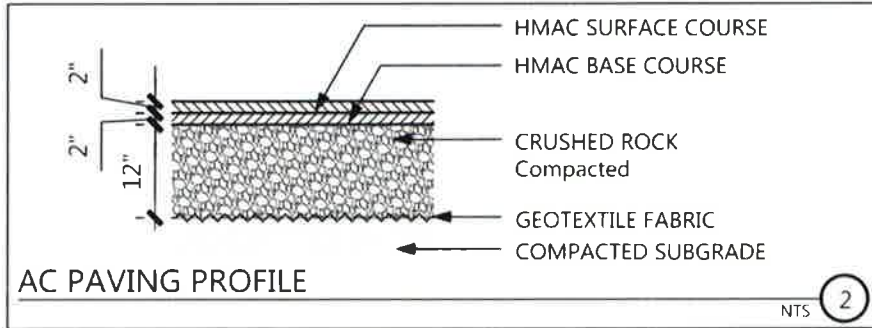
1. Work is to install connecting drive between parking lot drive way and service driveway to the south.
2. Excavate material to required depth and construct asphalt pavement: 4" asphalt over 12" crushed rock over geotextile fabric.
3. Excavated material may be spread to east of new work as noted.
4. Install seeded filter strip along east edge of new work.

**OUTLINE SPECIFICATIONS:**

1. Crushed Base Rock: 12" depth. 3/4-inch minus, free from foreign material, conforming to ODOT Standards.
2. Compaction: Rock Base: 95%. Asphalt Pavement: 92%, Earth Backfill 90%.
3. Geotextile Fabric under base rock: per ODOT Standards.
4. Hot Mix Asphalt Pavement: 4-inch thickness. Install in 2 lifts, base and wearing course; both lifts 1/2-inch Dense Level 2 per ODOT Standards.
5. Asphalt Tack Coat: at edges conforming to ODOT Standards.
6. Sand: as required for tack and sand at adjoining asphalt.
7. Topsoil: 3-inch minimum thickness. Salvaged on-site soil, natural, fertile, friable, with at least 10% humus, and other deleterious material, as approved. Ballfield loam will not be accepted.
8. Owner shall provide independent testing rock base and pavement compaction.
9. Hydro-seeding or Terra-seeding at completion of work under separate contract.

**GENERAL NOTES**

1. Protect existing concrete driveways, curbs, and fencing from damage. Repair any damage to areas during work.
2. Provide erosion control devices at nearby catch basins to prevent sediment-laden runoff from entering Storm Drain system. Periodically clean any erosion control devices as required.
3. Dimensions and locations of underground utilities are approximate. Provide private locate of utilities prior to commencing work.
4. Maintain vehicle access to parking lot and service drive during construction.
5. Confine construction activities as close to work footprint as possible.
6. Blend all new elevations back to existing grade to create uniform slope. Maximum slope, 4:1.
7. Construct smooth transitions between new paving improvements and existing paving to remain.
8. Dimensions are from face of curb unless noted otherwise.
9. At existing lawn to be removed. Excavate 9" and disburse at max. 3" depth, level and no clumps or heaps, east of improvement area. Excavate additional 7" and haul off site.
10. Construction entrance and egress to be from Hilyard Street along existing asphalt drive south of project site. Coordinate with Owner.



Project #: 1769 B

Date: Jan. 26, 2018

Revisions:  
ADD 1 02/01/18

100% CONSTRUCTION DOCUMENTS

SITE PLAN

L1.0