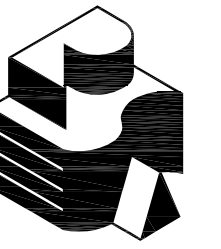


# Multisite Roofing 2017

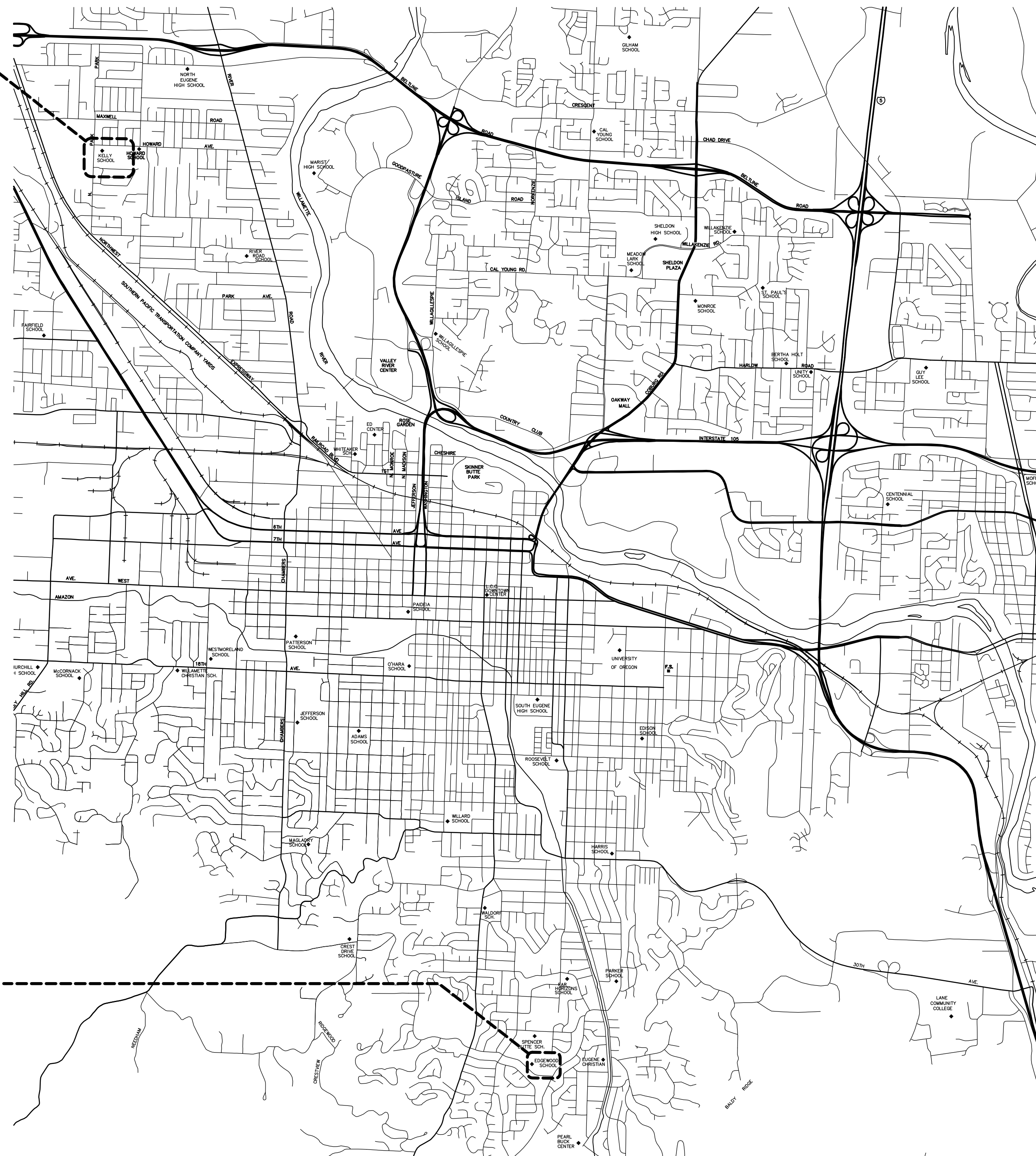
## Kelly Middle School and Edgewood Elementary School

Eugene School District 4J Eugene, Oregon

C.I.P. #420.780.724



Robertson Sherwood Architects pc  
132 EAST BROADWAY, SUITE 540  
EUGENE, OREGON 97401  
541-342-8077  
www.robertsonsherwood.com



BASE BID A - KELLY MIDDLE SCHOOL  
850 HOWARD AVENUE  
EUGENE, OREGON 97404

BASE BID B - EDGEWOOD ELEMENTARY SCHOOL  
577 E. 46th AVENUE  
EUGENE, OREGON 97405

### PROJECT TEAM

#### OWNER

EUGENE PUBLIC SCHOOL DISTRICT 4J  
715 W. 4th AVENUE  
EUGENE, OREGON 97402  
541-790-7417  
541-790-7420 (FAX)

#### ARCHITECT

ROBERTSON/SHERWOOD/ARCHITECTS pc  
132 E. BROADWAY, SUITE 540  
EUGENE, OREGON 97401  
541-324-8077  
541-345-4302 (FAX)

### SHEET INDEX

#### GENERAL

A-001 COVER SHEET, VICINITY MAP  
A-002 SITE PLANS, SCOPE OF WORK, GENERAL NOTES, FASTENING SCHEDULE

#### ARCHITECTURAL

A-101 KELLY MIDDLE SCHOOL ROOF PLAN  
A-102 EDGEWOOD ELEMENTARY SCHOOL ROOF PLANS  
A-201 KELLY MIDDLE SCHOOL ROOF DETAILS  
A-202 KELLY MIDDLE SCHOOL MECHANICAL ROOM PLAN, MECHANICAL ROOM SECTION, DETAILS  
A-203 EDGEWOOD ELEMENTARY SCHOOL ROOF DETAILS

### ABBREVIATIONS

AV	AIR VENTILATOR
BLKG	BLOCKING
BTW	BETWEEN
BUR	BUILT-UP ROOF
CONT	CONTINUOUS
CNTRFLSHG	COUNTERFLASHING
d	PENNY
DD	DOWNSPOUT DROP
(E)	EXISTING
EA	EACH
EQ	EQUAL
FLSHG	FLASHING
FPA	FALL PROTECTION ANCHOR
GA	GAGE
GALV	GALVANIZED
INSUL	INSULATION
MB	MODIFIED BITUMEN
LVL	LAMINATED VENEER LUMBER
MFR	MANUFACTURER
MIN	MINIMUM
MTL	METAL
(N)	NEW
N.T.S.	NOT TO SCALE
OC	ON CENTER
OD	OVERFLOW DRAIN
OPP	OPPOSITE
PLYWD	PLYWOOD
POLYISO	POLYISOCYANURATE
PT	PRESSURE TREATED
PRE-FIN	PRE-FINISHED
PV	PLUMBING VENT STACK
RD	ROOF DRAIN
REQ'D	REQUIRED
RH	ROOF HATCH
SD	SCUPPER DRAIN
SDS	SIMPSON STRONG-DRIVE SCREW
SHTHG	SHEATHING
SIM	SIMILAR
SM	SHEET METAL
SS	STAINLESS STEEL
TYP	TYPICAL
U.O.N.	UNLESS OTHERWISE NOTED
VERT	VERTICAL
W/	WITH

### SYMBOLS

	KEYED NOTE REFERENCE
	DETAIL REFERENCE
	ELEVATION REFERENCE
	BUILDING SECTION REFERENCE

### CODE INFORMATION

APPLICABLE CODE: 2014 OREGON STRUCTURAL SPECIALTY CODE, BASED ON 2012 INTERNATIONAL BUILDING CODE

OCCUPANCY: SCHOOL CLASSROOMS: E

CONSTRUCTION TYPES:  
KELLY MIDDLE SCHOOL: TYPE V-A  
EDGEWOOD ELEMENTARY SCHOOL: TYPE V-A

MULTISITE ROOFING 2017  
Kelly Middle School  
850 Howard Ave, Eugene, OR  
Edgewood Elementary School  
577 E. 46th Ave, Eugene, OR

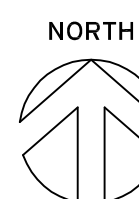
MARK DATE DESCRIPTION

ISSUE DATE: 8 MAY 2017  
ISSUE: CONSTRUCTION DOCUMENTS

PROJECT NO: 1707  
DRAWN BY: BDH  
CHECKED BY: JMR  
© ROBERTSON/SHERWOOD/ARCHITECTS PC 2017 ORIGINAL SHEET SIZE: 24"X36"

COVER SHEET  
VICINITY MAP

A1 VICINITY MAP  
A-001 NOT TO SCALE



A-001

## SCOPE OF WORK

### KELLY MIDDLE SCHOOL

- REFER TO SHEET A-101.
- EXISTING BUILT-UP ROOF TO REMAIN. CUT OUT BLISTERS AND OTHER DEFECTS. FILL VOIDS FROM CUTOUTS AND REPAIR VAPOR RETARDER WHERE DAMAGED.
- REMOVE AIR VENTS, ROOF VENTS AND OTHER EQUIPMENT AS REQUIRED TO EXTEND CURBS AND INSTALL FLASHINGS AS INDICATED ON DRAWINGS. REPLACE MOPPED-IN COLLAR FLASHINGS WITH NEW.
- INSTALL FALL PROTECTION ANCHORS.
- INSTALL NEW INSULATION, COVER BOARD, SINGLE-PLY ROOF, FLASHINGS, AND OTHER ITEMS AS DETAILED AND SPECIFIED.
- REINSTALL EQUIPMENT AND FLASHINGS SALVAGED FOR REUSE. PAINT NEW AND EXISTING ROOFTOP EQUIPMENT AND SHEET METAL EXCEPT PRE-FINISHED METAL.

### EDGEWOOD ELEMENTARY SCHOOL

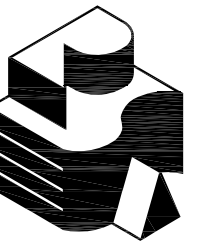
- REFER TO SHEET A-102.
- REMOVE EXISTING ROOF MATERIAL AND SHEET METAL DOWN TO DECK. USE HAND SPUDGING DEMOLITION ONLY; DO NOT USE MECHANICAL SPUDGING. DO NOT SAW CUT ROOF. PROTECT MATERIALS TO BE REUSED.
- REMOVE AIR VENTS, ROOF VENTS AND OTHER EQUIPMENT AS REQUIRED TO EXTEND CURBS AND INSTALL FLASHINGS AS INDICATED ON DRAWINGS. REPLACE MOPPED-IN AIR VENT COLLAR FLASHINGS WITH NEW.
- INSTALL FALL PROTECTION ANCHORS.
- INSTALL NEW BUILT-UP ROOFS, FLASHINGS, DRAINS, AND VENTS AS DETAILED AND SPECIFIED. REINSTALL EQUIPMENT AND FLASHINGS SALVAGED FOR REUSE.
- PAINT NEW PRE-PRIMED AND EXISTING ROOFTOP EQUIPMENT AND SHEET METAL EXCEPT PRE-FINISHED METAL.

## GENERAL NOTES

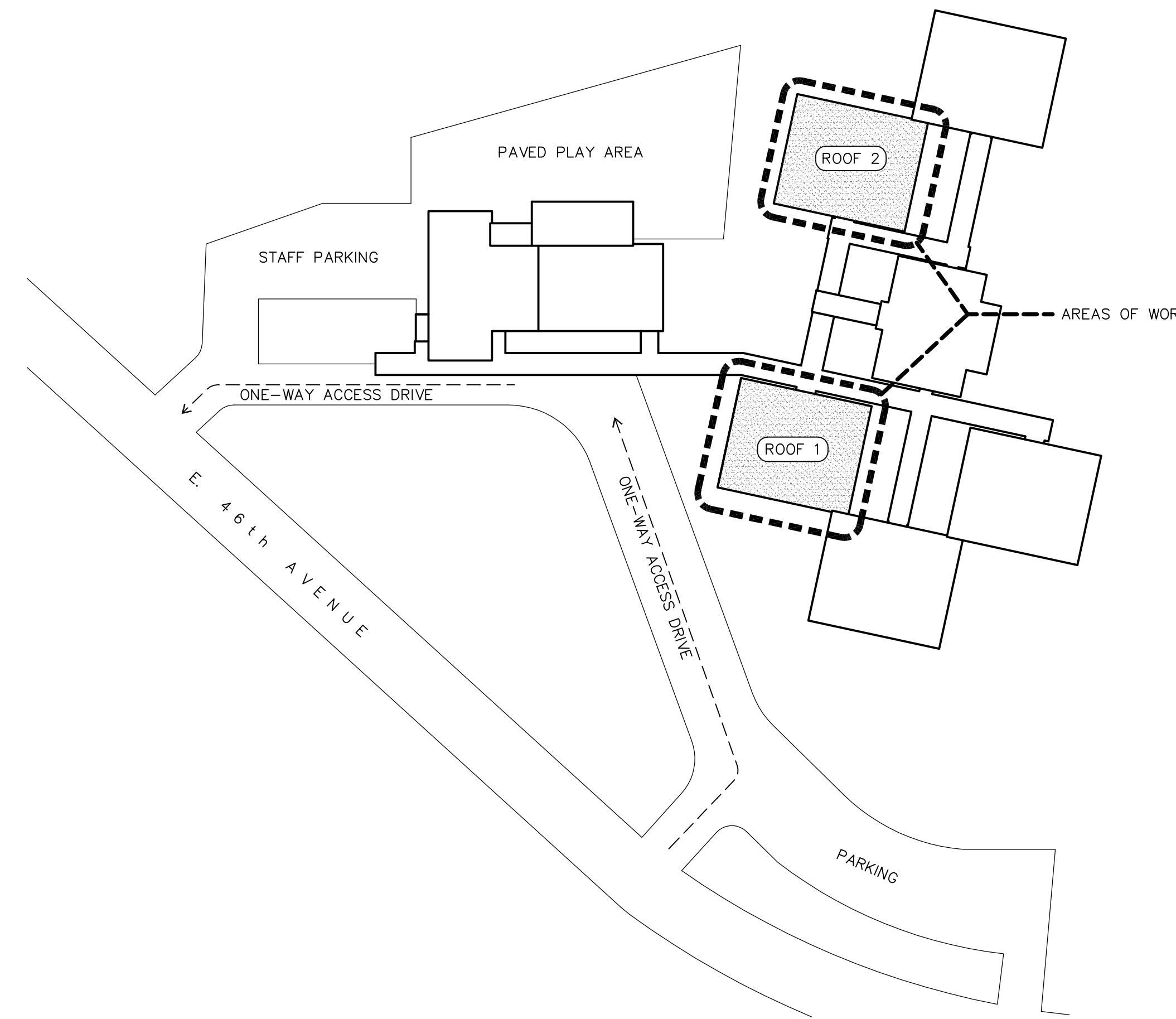
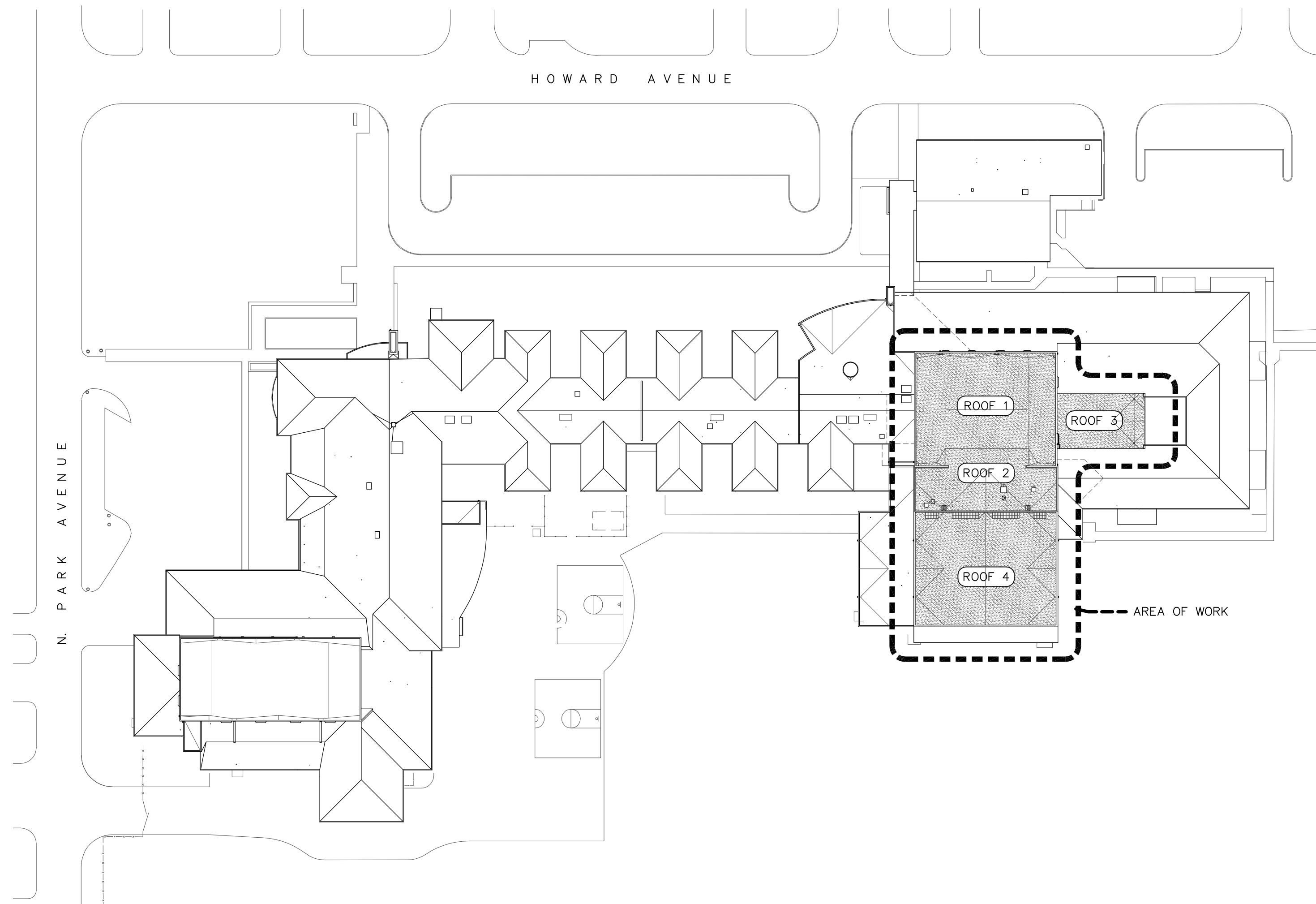
- PROTECT EXISTING BUILDINGS, YARDS, AND ADJACENT ROOF SURFACES FROM DAMAGE AND DEBRIS. REPAIR DAMAGE OCCURRING DURING THE WORK.
- BUILDING DIMENSIONS AND LOCATIONS OF ROOF PENETRATIONS ARE APPROXIMATE. VERIFY DIMENSIONS, LOCATIONS, AND QUANTITIES.
- INSPECT ROOF SUBSTRATE FOR DECAY AND REPORT UNSATISFACTORY CONDITIONS TO ARCHITECT FOR REMEDY.
- MAINTAIN TEMPORARY WATERPROOF COVERINGS UNTIL ROOFING IS COMPLETE.
- REPAIR EXISTING CEILINGS AND LIGHT FIXTURES DAMAGED DURING TEAR-OFF AND REROOFING WORK.
- VERIFY LOCATIONS OF STAGING AREAS WITH OWNER.
- DETAILS SHOW MINIMUM REQUIREMENTS FOR ROOFING COMPONENTS. FOLLOW SELECTED MANUFACTURER'S REQUIREMENTS WHEN THEY EXCEED THESE MINIMUMS.
- DISCONNECT ELECTRICITY IN CONDUITS AFFECTED BY THE WORK, INCLUDING POWER TO MECHANICAL UNITS. RECONNECT AND TEST OPERATION OF UNITS. ELECTRICAL WORK SHALL BE PERFORMED BY LICENSED ELECTRICAL CONTRACTOR.
- AT CHANGES IN ROOF PLANE, EASE EDGES WITH CANT STRIPS AND TAPERED EDGE STRIPS.
- WHERE EXISTING WOOD ROOF DECKING IS EXPOSED TO INTERIOR SPACE BELOW, INSTALL PLASTIC SHEETING TO CATCH DEBRIS DURING DEMOLITION. AFTER PLASTIC IS REMOVED, ENSURE THAT ALL STAPLES AND/OR TAPE FASTENERS ARE ALSO REMOVED.
- USE SHORTEST POSSIBLE FASTENERS REQUIRED TO ACHIEVE MANUFACTURERS' RECOMMENDED PENETRATION.

## FASTENING SCHEDULE

MODIFIED BITUMEN FLASHING:	LARGE HEAD SIMPLEX OR APPROVED NAILS VERTICAL SURFACES: 4" O/C HORIZONTAL SURFACES: 8" O/C
METAL FLANGES AT AIR VENTS:	LARGE HEAD HOT DIPPED 12 GA GALV ROOFING NAILS AT 4" O/C
PRE-FINISHED SHEET METAL SKIRTS AT EXHAUST FANS:	PRE-FINISHED SHEET METAL SCREWS WITH NEOPRENE WASHERS AT 8" O/C
PRE-FINISHED FLASHING AND COUNTERFLASHING:	PRE-FINISHED SHEET METAL SCREWS WITH NEOPRENE WASHERS AT 24" O/C
SURFACE MOUNT REGLETS TO CONCRETE OR MASONRY:	COMPRESSION PINS AT 8" O.C. AT REGLET. FILL SEALANT RECEPTACLE WITH SEALANT.
CONTINUOUS CLEATS AND REGLETS TO WOOD:	GALVANIZED NAILS AT 12" O.C.
SPLASH PANS:	(2) POP RIVETS TO SHEET METAL COUNTERFLASHING WHERE POSSIBLE; OTHERWISE, SET IN MASTIC.
PLYWOOD BACKING:	10d GALV NAILS AT 12" OC AT WOOD FRAMING. AT CONCRETE OR CMU: COMPRESSION PINS AT 18" OC, STAGGERED PATTERN
OVERFLOWS, SCUPPER DRAINS, DOWNSPOUT DROPS:	LARGE HEAD HOT DIPPED 12 GA GALVANIZED ROOFING NAIL AT EACH CORNER
METAL GRAVEL STOP:	LARGE HEAD HOT DIPPED 12 GA GALVANIZED ROOFING NAIL AT 3" OC; STAGGERED PATTERN



**Robertson Sherwood Architects PC**  
132 EAST BROADWAY, SUITE 540  
EUGENE, OREGON 97401  
541-342-8077  
www.robertsonsherwood.com



**MULTISITE ROOFING 2017**  
**Kelly Middle School**  
**850 Howard Ave, Eugene, OR**  
**Edgewood Elementary School**  
**577 E. 46th Ave, Eugene, OR**

MARK	DATE	DESCRIPTION
------	------	-------------

ISSUE DATE: 8 MAY 2017  
ISSUE: CONSTRUCTION DOCUMENTS  
PROJECT NO: 1707  
DRAWN BY: BDH  
CHECKED BY: JMR  
© ROBERTSON SHERWOOD ARCHITECTS PC 2017 ORIGINAL SHEET SIZE: 24" X 36"

SITE PLANS  
SCOPE OF WORK  
GENERAL NOTES  
FASTENING SCHEDULE

**A1**  
**KELLY MIDDLE SCHOOL SITE PLAN**  
NOT TO SCALE

NORTH  
850 HOWARD AVENUE, EUGENE, OR 97404

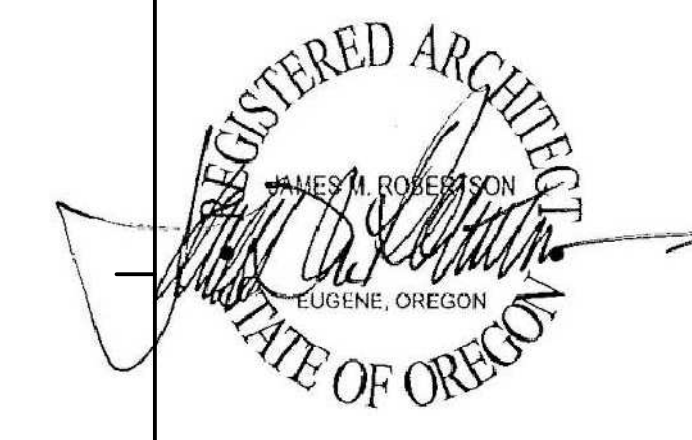
**A2**  
**EDGEWOOD ELEMENTARY SCHOOL OVERALL ROOF PLAN**  
NOT TO SCALE

NORTH  
577 EAST 46th AVENUE, EUGENE, OREGON 97405

**A-002**



**Robertson Sherwood Architects**  
 132 EAST BROADWAY, SUITE 540  
 EUGENE, OREGON 97401  
 541-342-8077  
 www.robertsonsherwood.com



### ROOF PLAN LEGEND

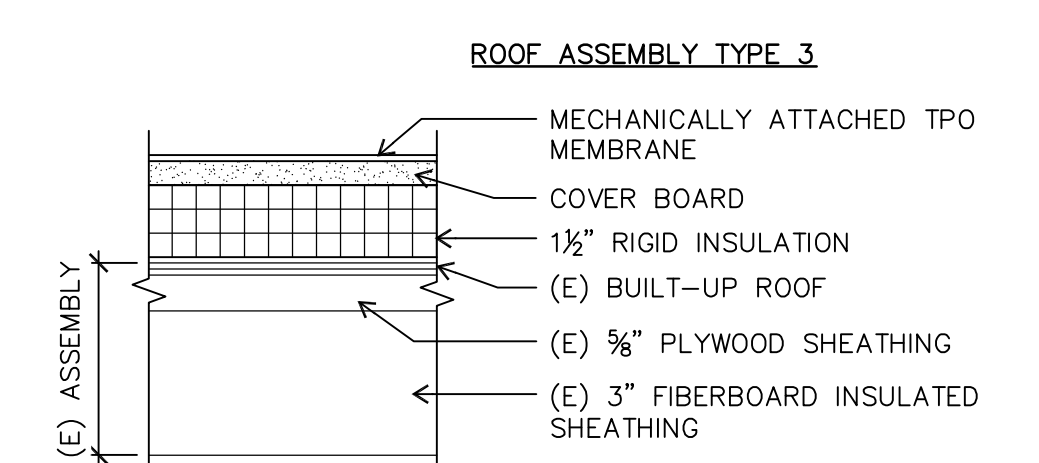
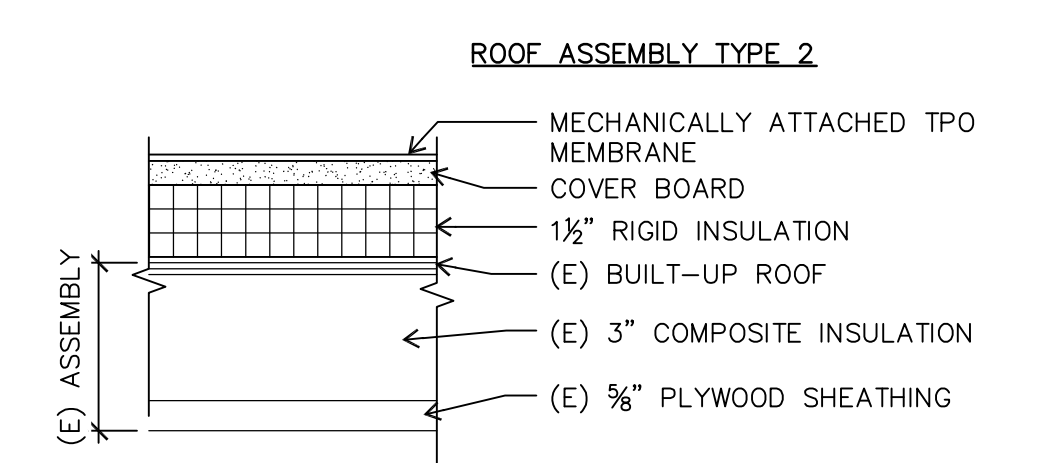
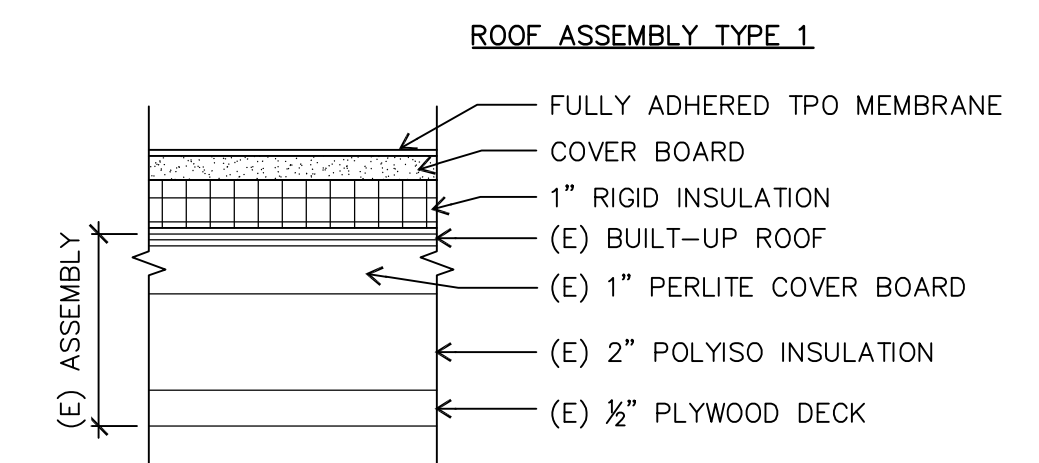
NOTE: SIZES OF ROOF PENETRATIONS AND CURBS INDICATED IN INCHES.

- NEW TPO MEMBRANE
- NEW WALKWAY PADS
- (E) SLOPE
- (N) SLOPE
- (E) AIR VENTILATOR
- (E) DOWNSPOUT DROP
- (N) FALL PROTECTION ANCHOR
- TYPE 1
- TYPE 2
- TYPE 4
- (E) PLUMBING VENT
- (E) ROOF DRAIN & OVERFLOW DRAIN
- (N) ROOF HATCH
- (E) SCUPPER DRAIN

### GENERAL NOTES

- EXISTING BUILT-UP ROOF TO REMAIN. CUT OUT BLISTERS AND OTHER DEFECTS. FILL VOIDS FROM CUTOUTS AND REPAIR VAPOR RETARDER WHERE DAMAGED.
- REMOVE AIR VENTS, ROOF VENTS AND OTHER EQUIPMENT AS REQUIRED TO EXTEND CURBS AND INSTALL FLASHINGS AS INDICATED ON DRAWINGS. REPLACE MOPPED-IN COLLAR FLASHINGS WITH NEW.
- INSTALL NEW INSULATION, COVER BOARD, SINGLE-PLY ROOF FLASHINGS, AND OTHER ITEMS AS DETAILED AND SPECIFIED.
- REINSTALL EQUIPMENT AND FLASHINGS SALVAGED FOR REUSE. PAINT NEW AND EXISTING ROOFTOP EQUIPMENT AND SHEET METAL EXCEPT PRE-FINISHED METAL.
- EXTEND CURBS, PLUMBING VENTS, AND OTHER ITEMS WHERE NECESSARY AS INDICATED IN DETAILS.

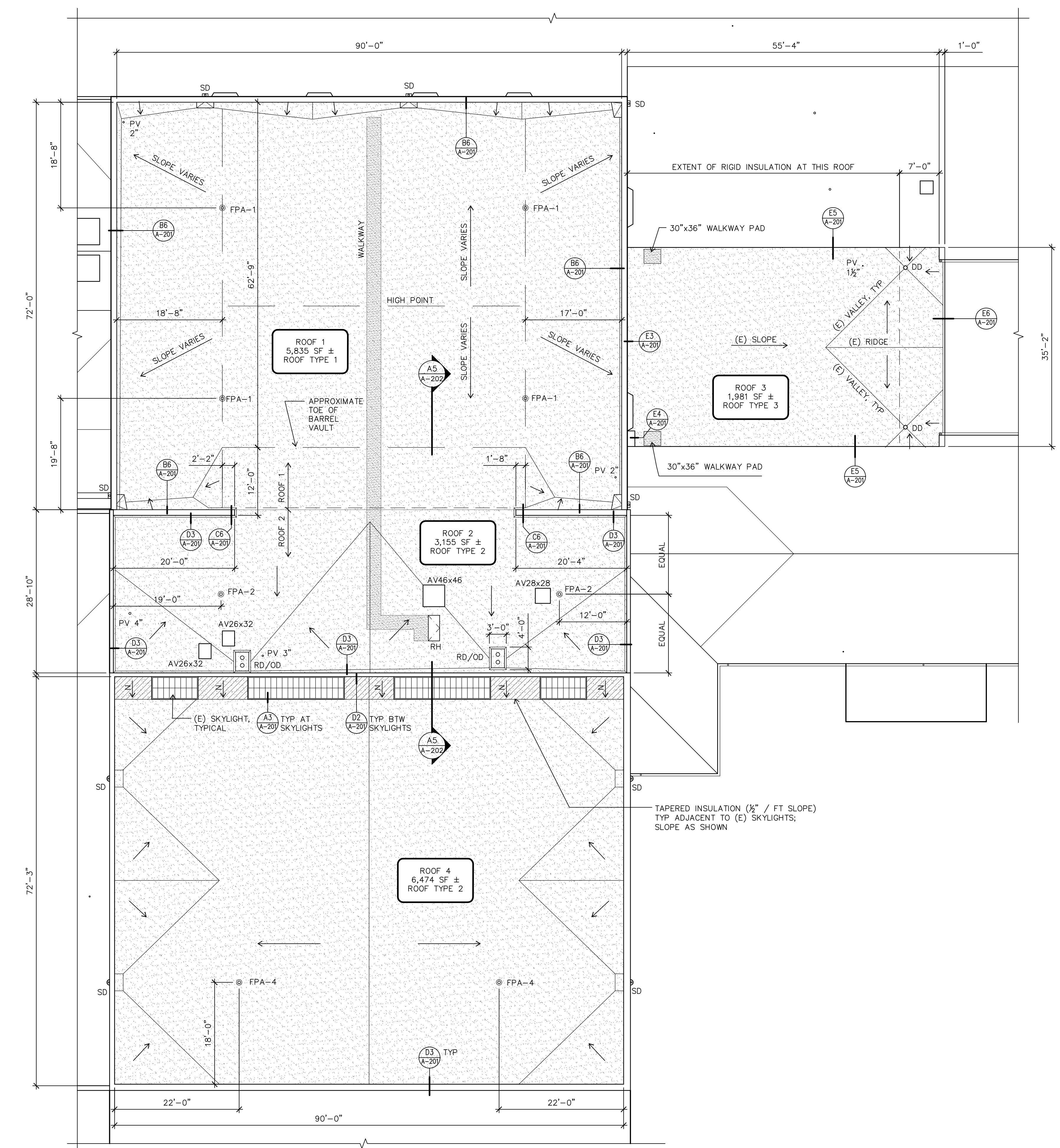
### ROOF TYPES



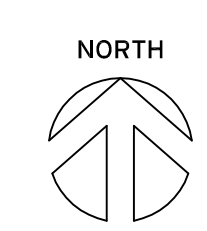
**MULTISITE ROOFING 2017**  
**Kelly Middle School**  
**850 Howard Ave, Eugene, OR**  
**Edgewood Elementary School**  
**577 E. 46th Ave, Eugene, OR**

MARK	DATE	DESCRIPTION

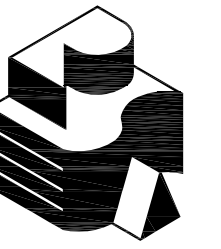
ISSUE DATE: 8 MAY 2017  
 ISSUE: CONSTRUCTION DOCUMENTS  
 PROJECT NO: 1707  
 DRAWN BY: BDH  
 CHECKED BY: JMR  
 © ROBERTSON SHERWOOD ARCHITECTS PC 2017 ORIGINAL SHEET SIZE: 24"X36"  
 KELLY MIDDLE SCHOOL  
 ROOF PLAN,  
 MECHANICAL ROOM PLAN,  
 MECHANICAL ROOM SECTION



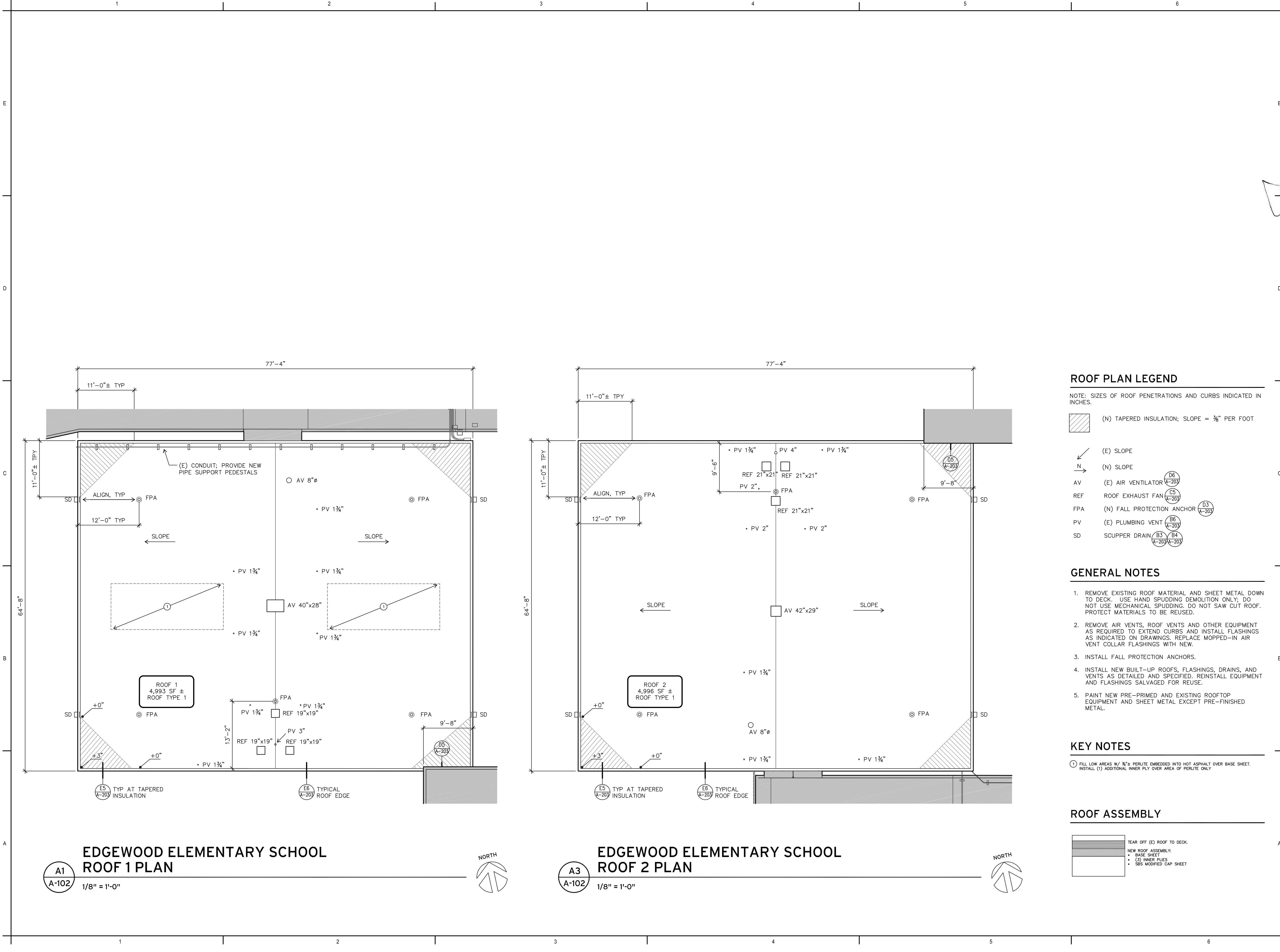
**B1**  
**A-101**  
**KELLY MIDDLE SCHOOL ROOF PLAN**  
 1" = 10'-0"



**A-101**



**Robertson Sherwood Architects** pc  
 132 EAST BROADWAY, SUITE 540  
 EUGENE, OREGON 97401  
 541-342-8077  
 www.robertsonsherwood.com



**ROOF PLAN LEGEND**

NOTE: SIZES OF ROOF PENETRATIONS AND CURBS INDICATED IN INCHES.

- (N) TAPERED INSULATION; SLOPE = 3/8" PER FOOT
- (E) SLOPE
- (N) SLOPE
- AV (E) AIR VENTILATOR
- REF ROOF EXHAUST FAN
- FPA (N) FALL PROTECTION ANCHOR
- PV (E) PLUMBING VENT
- SD SCUPPER DRAIN

**GENERAL NOTES**

1. REMOVE EXISTING ROOF MATERIAL AND SHEET METAL DOWN TO DECK. USE HAND SPUDGING DEMOLITION ONLY; DO NOT USE MECHANICAL SPUDGING. DO NOT SAW CUT ROOF. PROTECT MATERIALS TO BE REUSED.
2. REMOVE AIR VENTS, ROOF VENTS AND OTHER EQUIPMENT AS REQUIRED TO EXTEND CURBS AND INSTALL FLASHINGS AS INDICATED ON DRAWINGS. REPLACE MOPPED-IN AIR VENT COLLAR FLASHINGS WITH NEW.
3. INSTALL FALL PROTECTION ANCHORS.
4. INSTALL NEW BUILT-UP ROOFS, FLASHINGS, DRAINS, AND VENTS AS DETAILED AND SPECIFIED. REINSTALL EQUIPMENT AND FLASHINGS SALVAGED FOR REUSE.
5. PAINT NEW PRE-PRIMED AND EXISTING ROOFTOP EQUIPMENT AND SHEET METAL EXCEPT PRE-FINISHED METAL.

**KEY NOTES**

- ① FILL LOW AREAS W/ 3/4" PERLITE EMBEDDED INTO HOT ASPHALT OVER BASE SHEET. INSTALL (1) ADDITIONAL INNER PLY OVER AREA OF PERLITE ONLY.

**ROOF ASSEMBLY**

- TEAR OFF (E) ROOF TO DECK.
- NEW ROOF ASSEMBLY:
  - BASE SHEET
  - (3) INNER PLYS
  - SBS MODIFIED CAP SHEET

**MULTISITE ROOFING 2017**  
 Kelly Middle School  
 850 Howard Ave, Eugene, OR  
 Edgewood Elementary School  
 577 E. 46th Ave, Eugene, OR

MARK DATE DESCRIPTION

ISSUE DATE: 8 MAY 2017  
 ISSUE: CONSTRUCTION DOCUMENTS

PROJECT NO: 1707  
 DRAWN BY: BDH  
 CHECKED BY: JMR

© ROBERTSON SHERWOOD ARCHITECTS PC 2017 ORIGINAL SHEET SIZE: 24"X36"

EDGEWOOD ELEMENTARY SCHOOL  
 ROOF PLANS

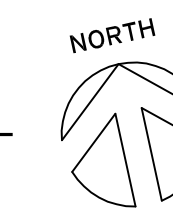
**EDGEWOOD ELEMENTARY SCHOOL  
 ROOF 1 PLAN**

A1  
 A-102  
 1/8" = 1'-0"

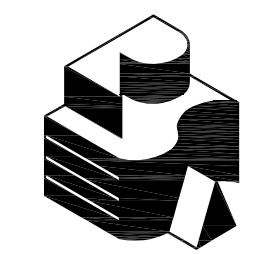


**EDGEWOOD ELEMENTARY SCHOOL  
 ROOF 2 PLAN**

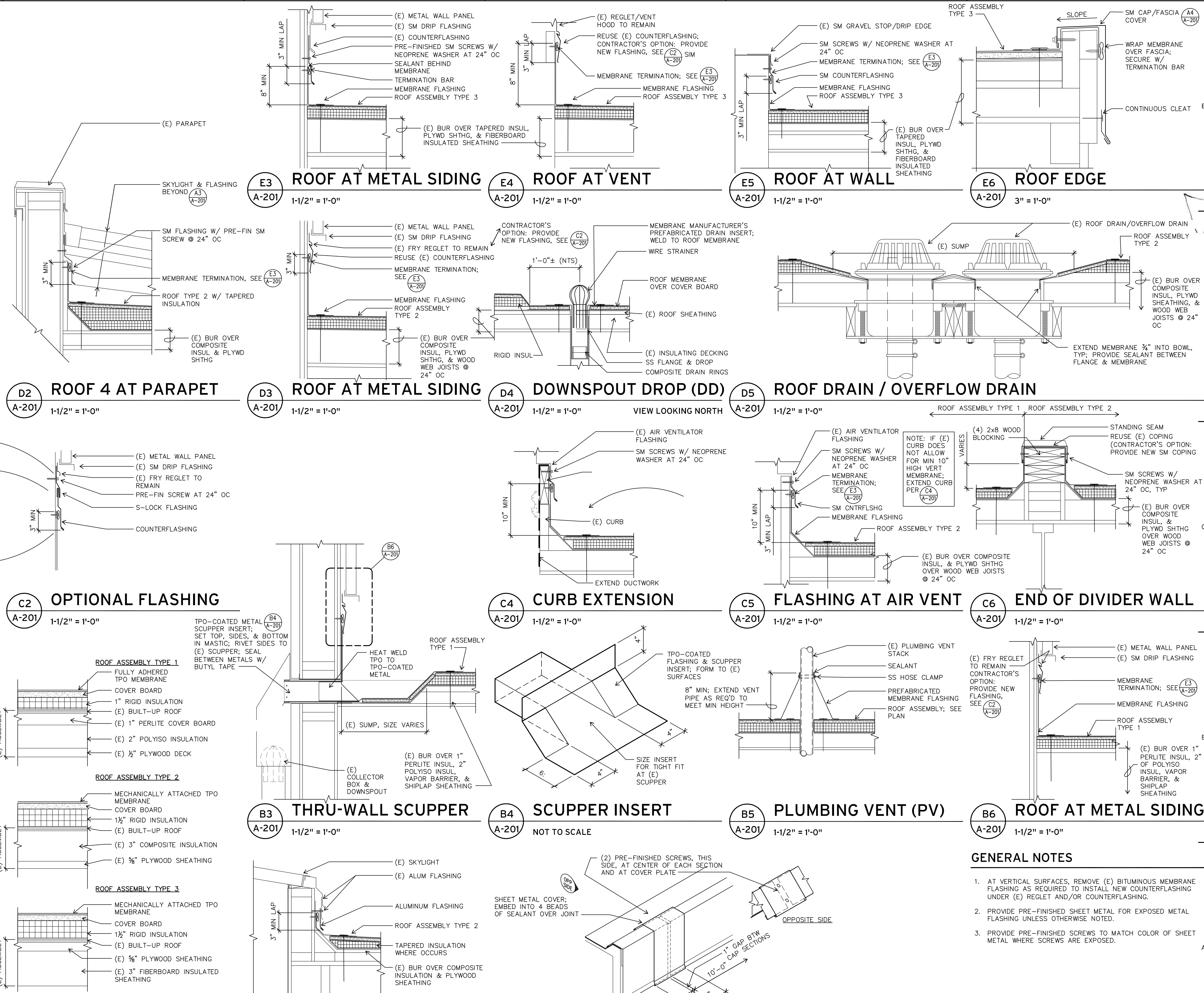
A3  
 A-102  
 1/8" = 1'-0"



**A-102**



**Robertson Sherwood Architects**  
 132 EAST BROADWAY, SUITE 540  
 EUGENE, OREGON 97401  
 541-342-8077  
 www.robertsonsherwood.com



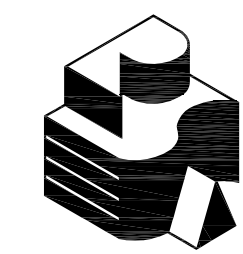
**GENERAL NOTES**

1. AT VERTICAL SURFACES, REMOVE (E) BITUMINOUS MEMBRANE FLASHING AS REQUIRED TO INSTALL NEW COUNTERFLASHING UNDER (E) REGLET AND/OR COUNTERFLASHING.
2. PROVIDE PRE-FINISHED SHEET METAL FOR EXPOSED METAL FLASHING UNLESS OTHERWISE NOTED.
3. PROVIDE PRE-FINISHED SCREWS TO MATCH COLOR OF SHEET METAL WHERE SCREWS ARE EXPOSED.

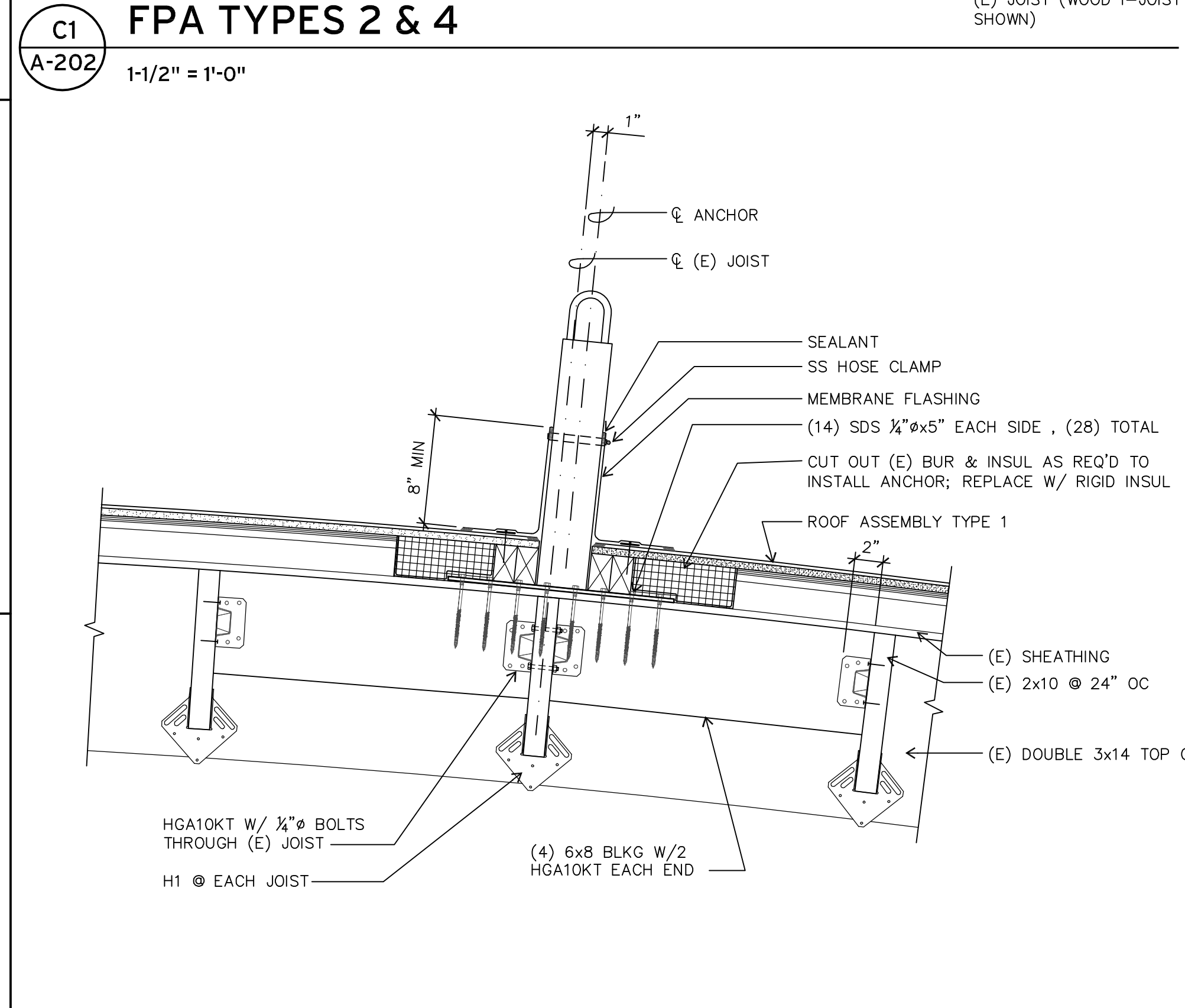
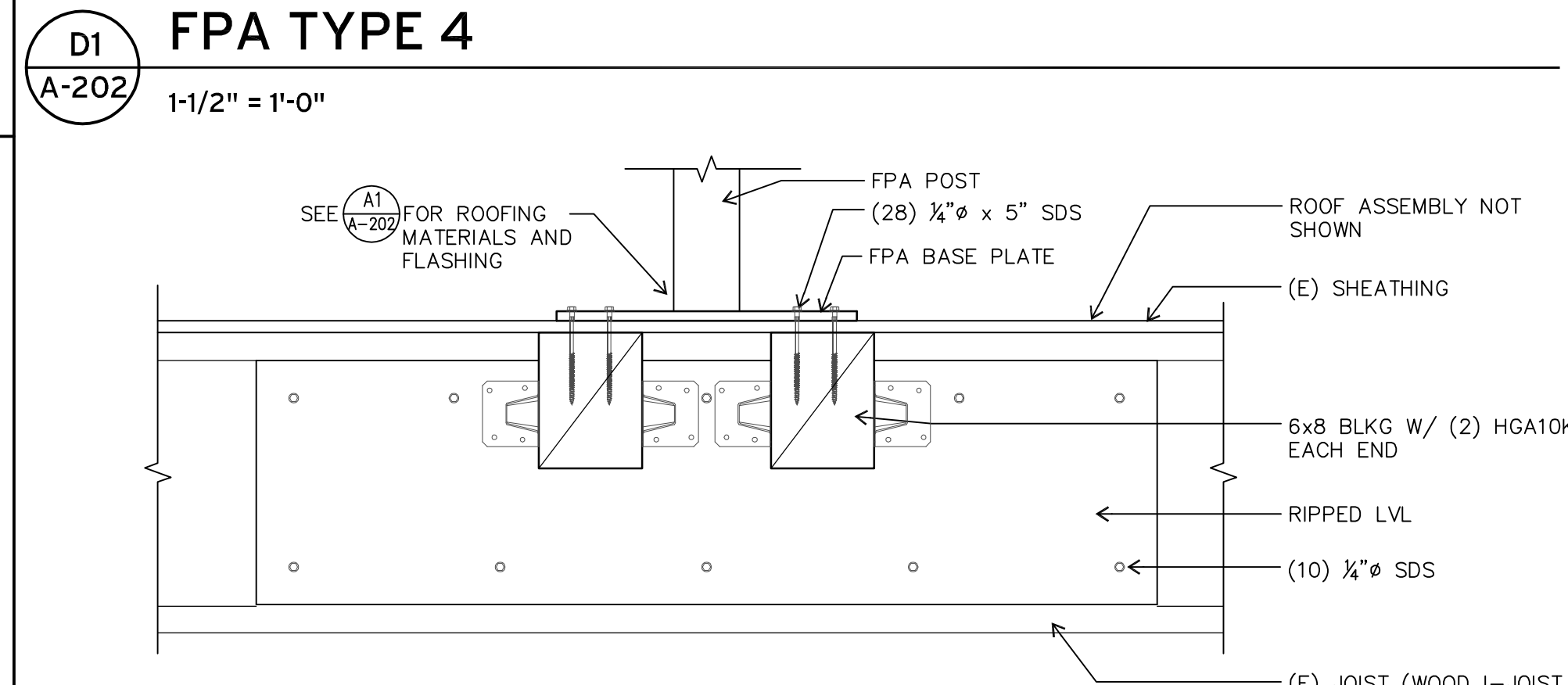
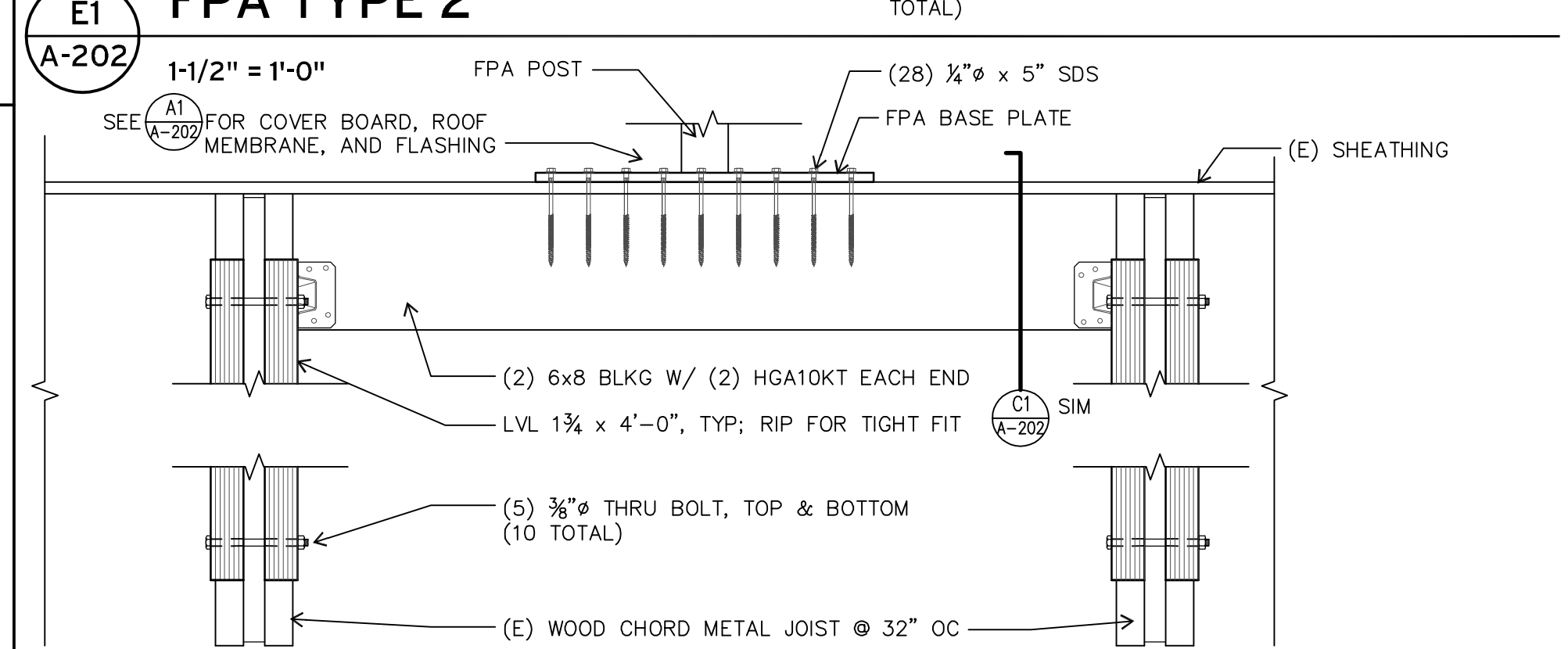
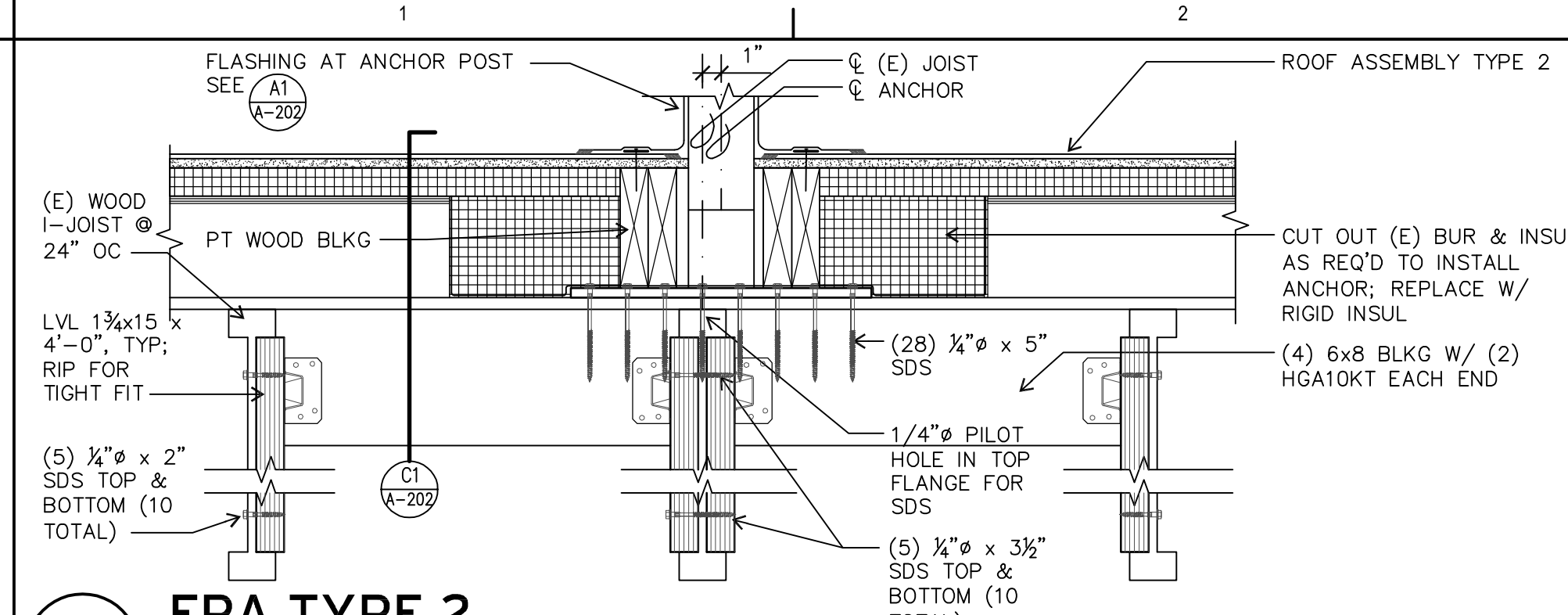
**MULTISITE ROOFING 2017**  
 Kelly Middle School  
 850 Howard Ave, Eugene, OR  
 Edgewood Elementary School  
 577 E. 46th Ave, Eugene, OR

MARK	DATE	DESCRIPTION

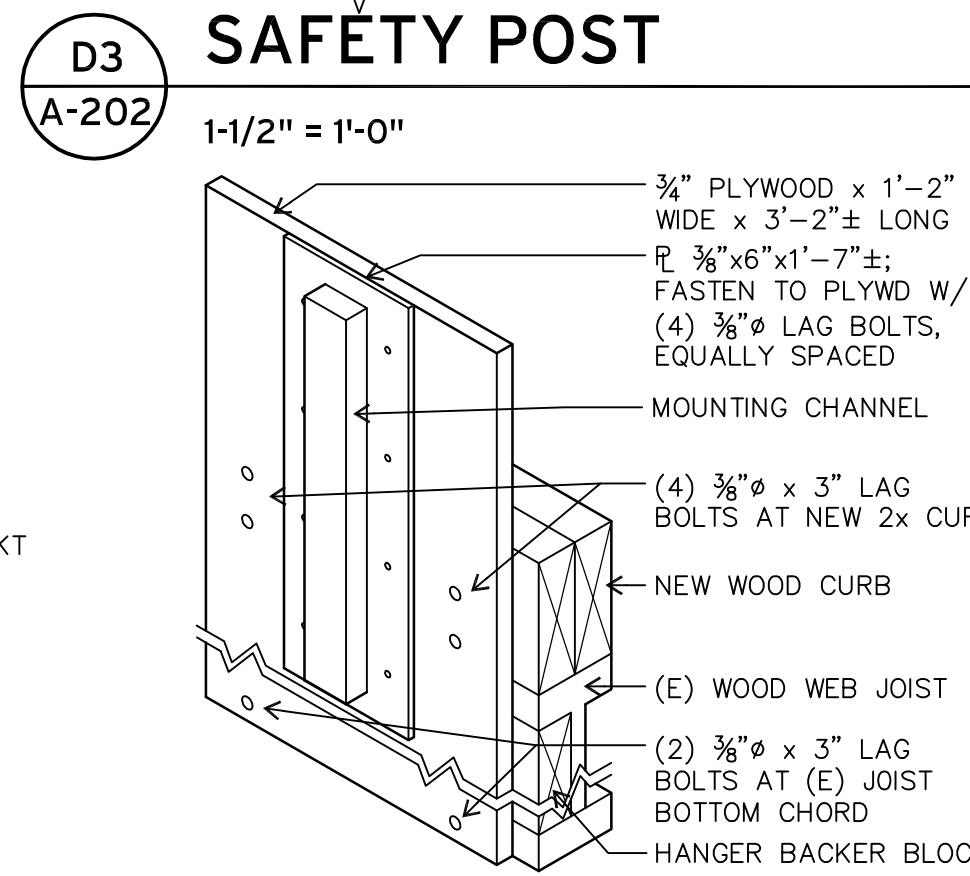
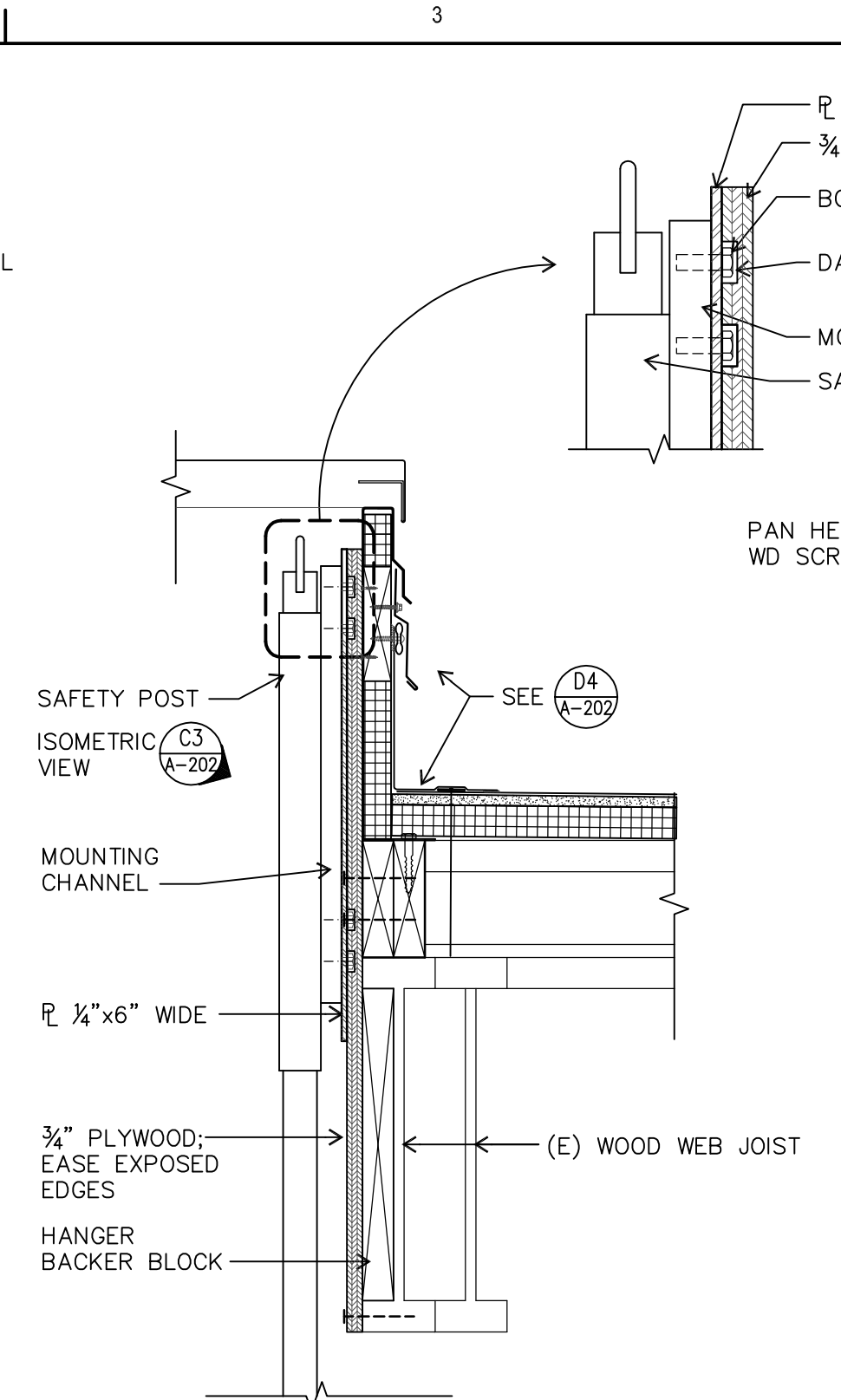
ISSUE DATE: 8 MAY 2017  
 ISSUE: CONSTRUCTION DOCUMENTS  
 PROJECT NO: 1707  
 DRAWN BY: BDH  
 CHECKED BY: JMR  
 © ROBERTSON SHERWOOD ARCHITECTS PC 2017 ORIGINAL SHEET SCALE  
 KELLY MIDDLE SCHOOL  
 ROOF DETAILS



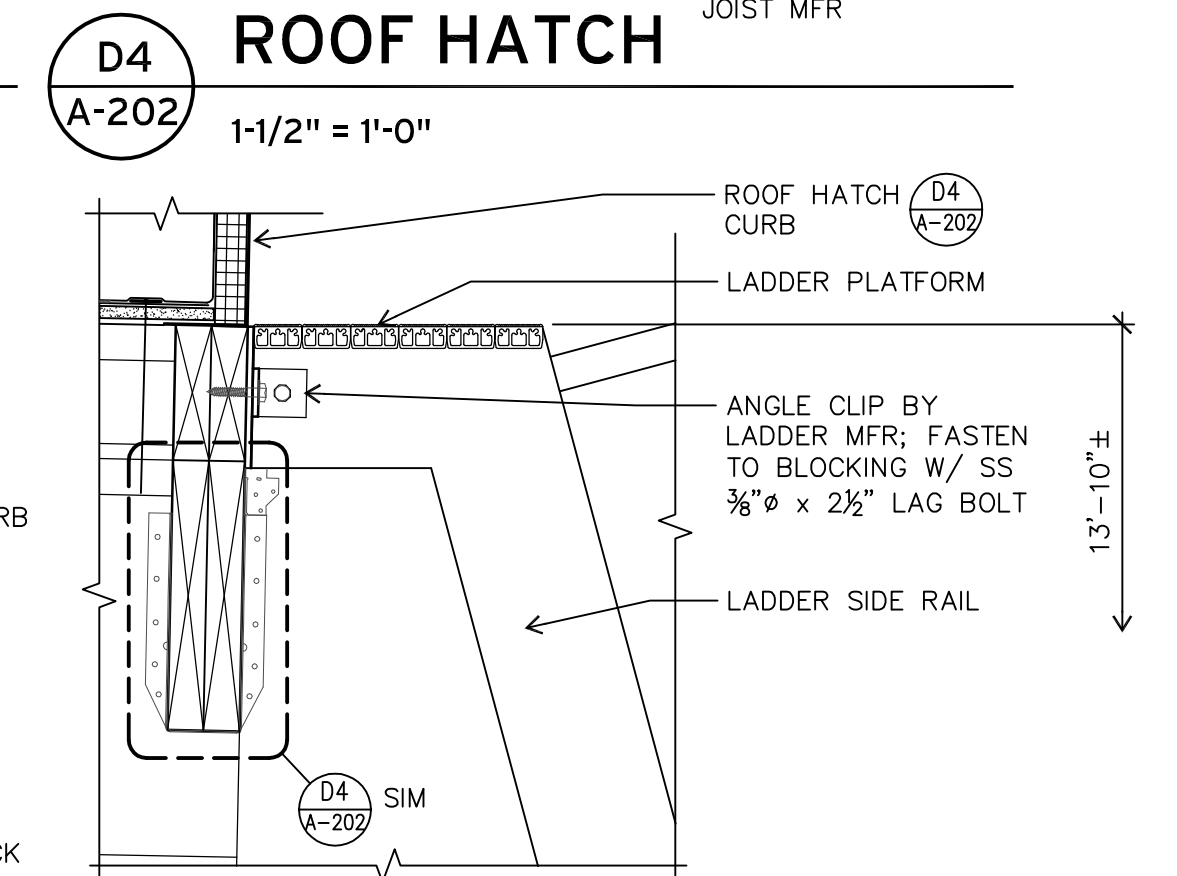
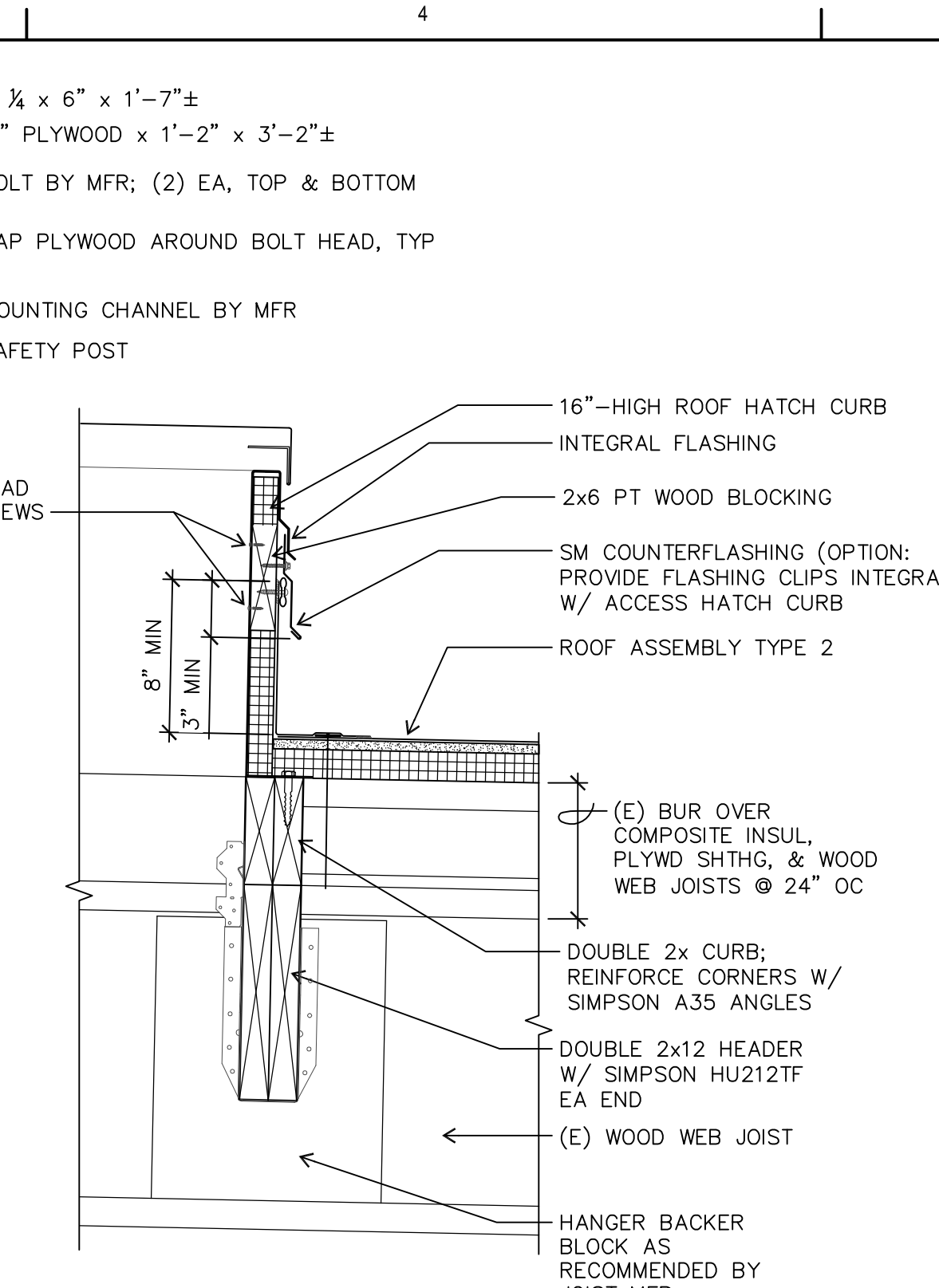
**Robertson Sherwood Architects**  
 132 EAST BROADWAY, SUITE 540  
 EUGENE, OREGON 97401  
 541-342-8077  
 www.robertsonsherwood.com



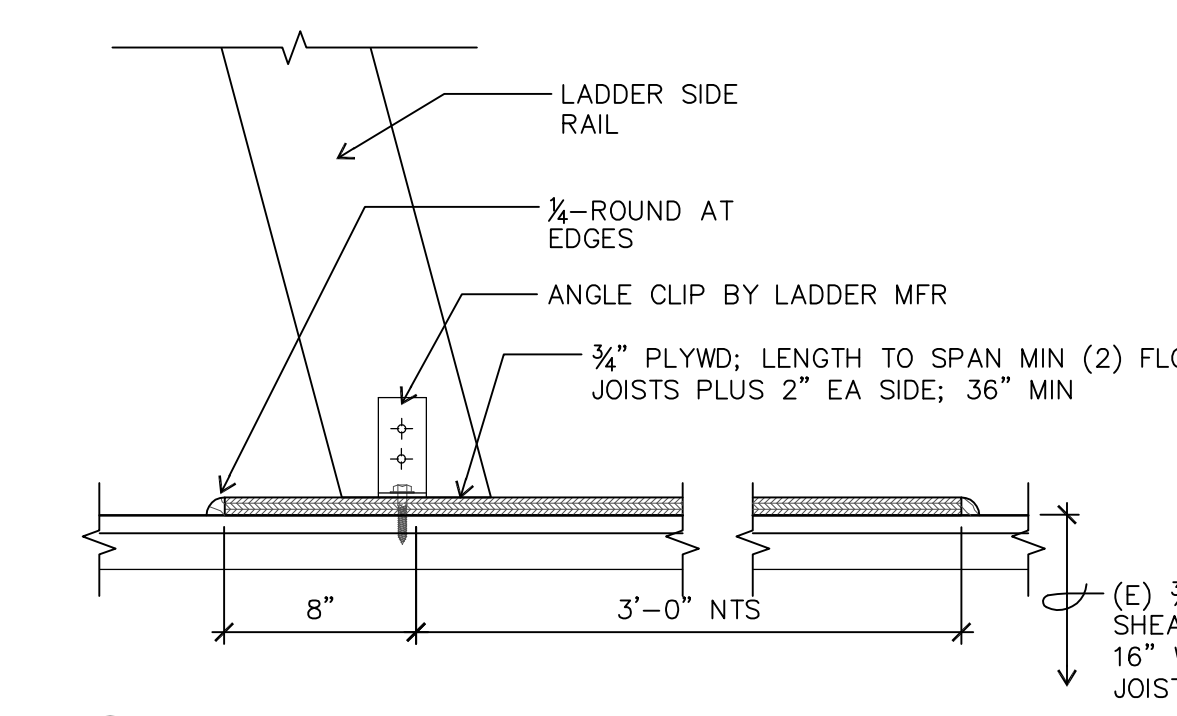
**A1 FPA TYPE 1**  
 1-1/2" = 1'-0"



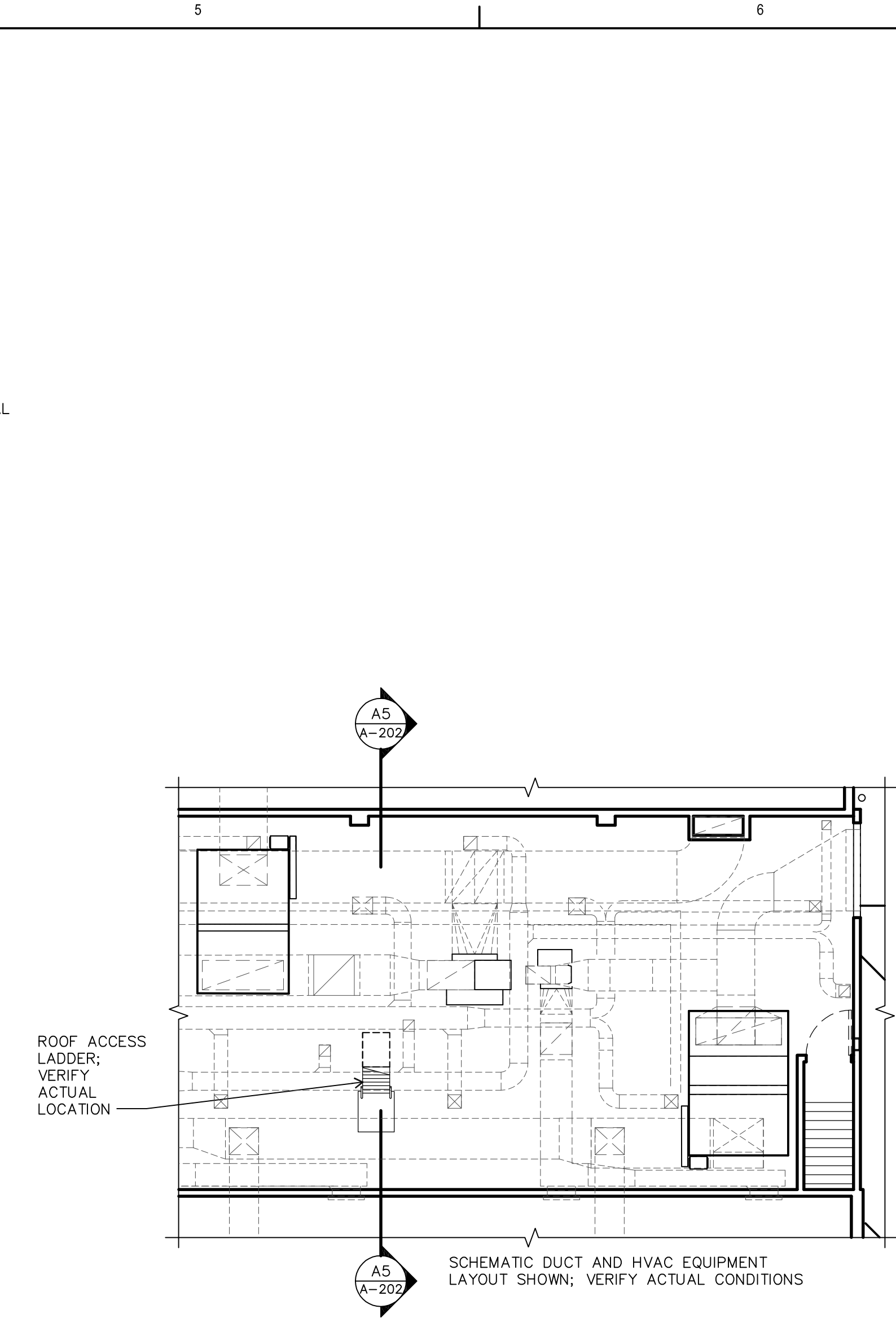
**C3 SAFETY POST MOUNT**  
 NOT TO SCALE



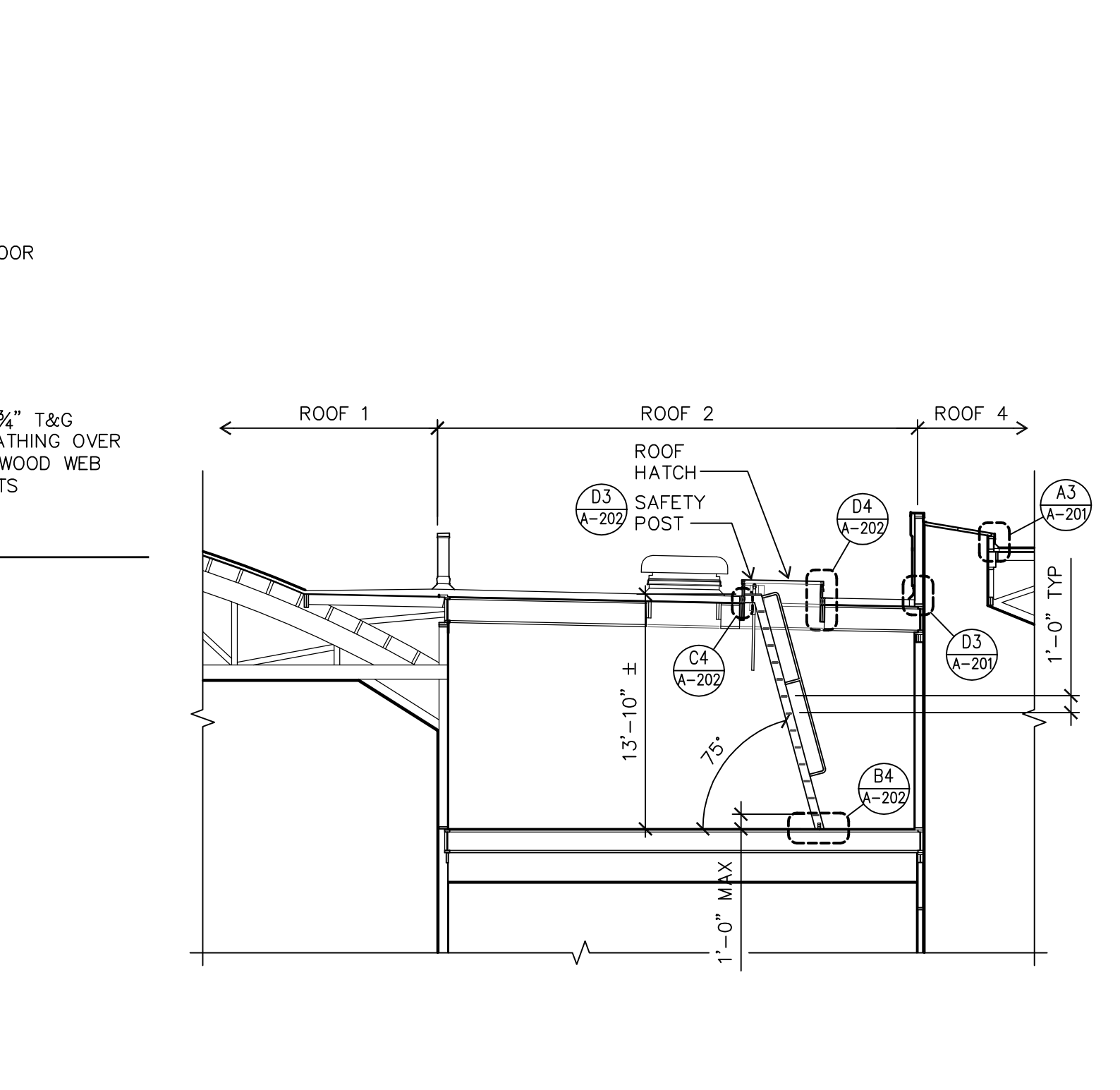
**C4 LADDER DETAIL**  
 1-1/2" = 1'-0"



**B4 LADDER AT FLOOR**  
 1-1/2" = 1'-0"



**C5 PARTIAL MECHANICAL ROOM PLAN**  
 1/8" = 1'-0"



**A5 SECTION AT MECHANICAL ROOF**  
 1/8" = 1'-0"

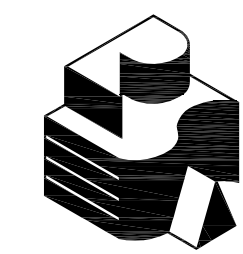
**MULTISITE ROOFING 2017**  
 Kelly Middle School  
 850 Howard Ave, Eugene, OR  
 Edgewood Elementary School  
 577 E. 46th Ave, Eugene, OR

MARK	DATE	DESCRIPTION

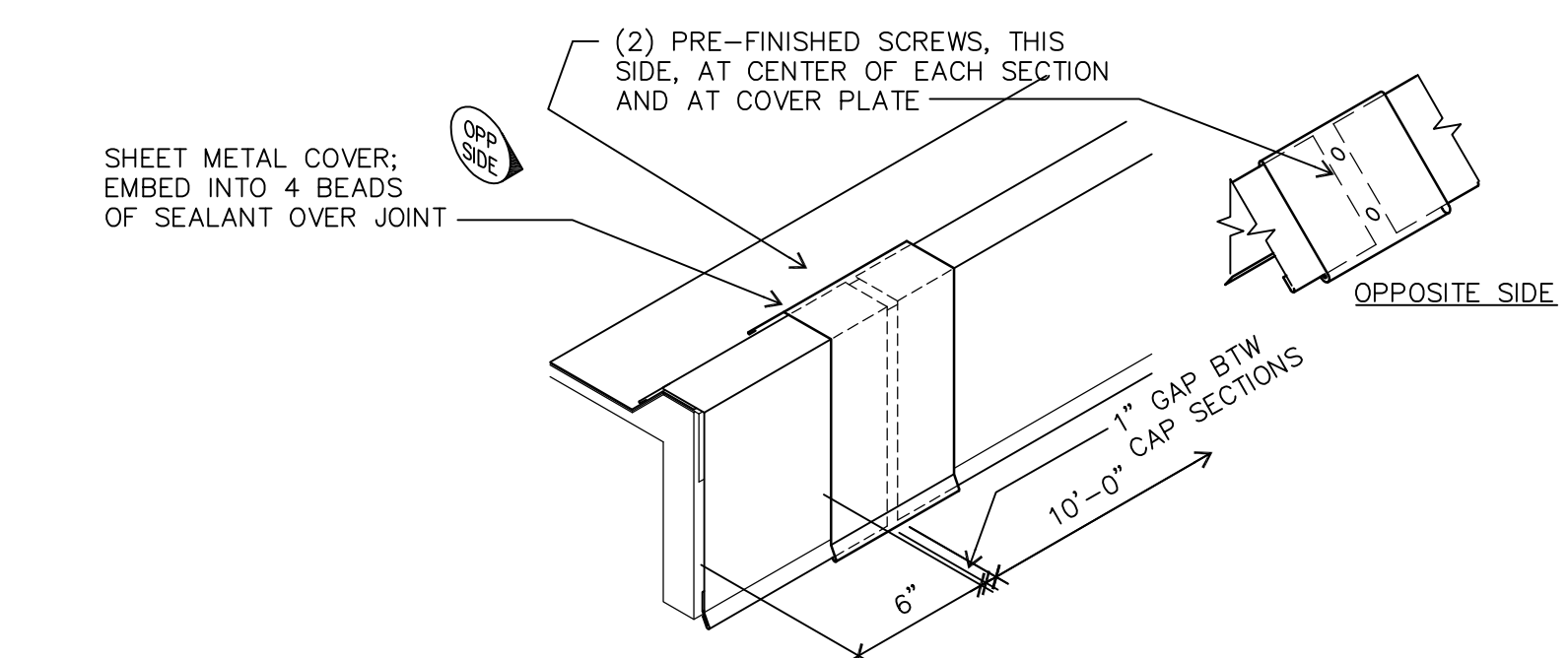
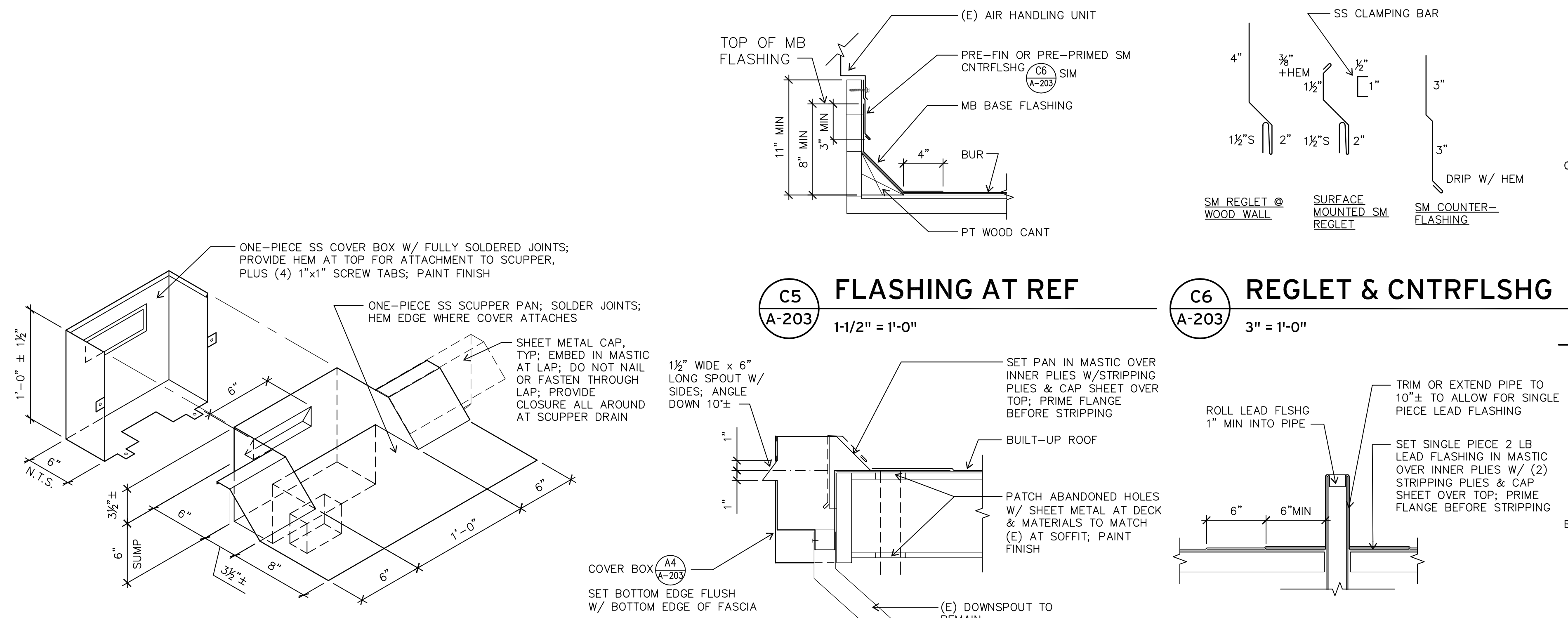
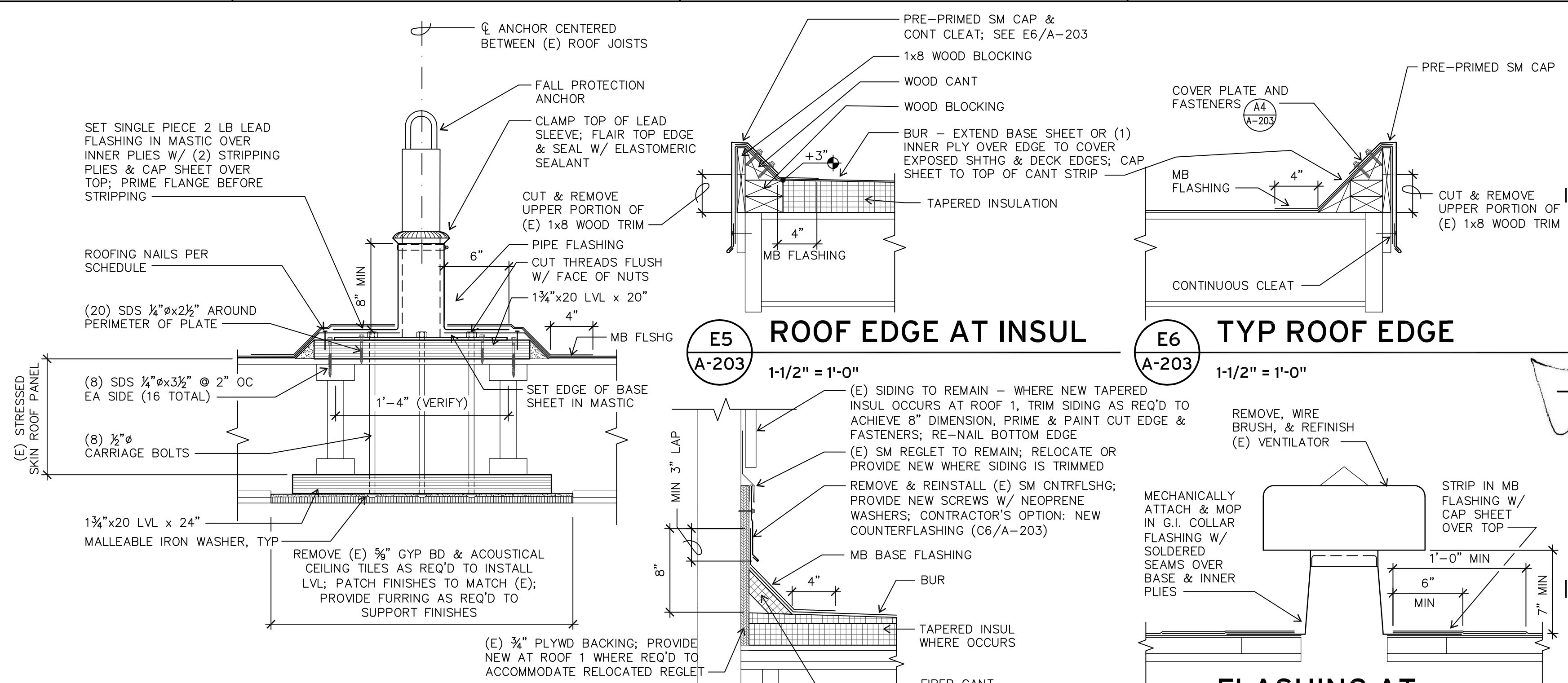
ISSUE DATE: 8 MAY 2017  
 ISSUE: CONSTRUCTION DOCUMENTS  
 PROJECT NO: 1707  
 DRAWN BY: BDH  
 CHECKED BY: JMR  
 © ROBERTSON SHERWOOD ARCHITECTS PC 2017 ORIGINAL SHEET SIZE: 24"X36"

KELLY MIDDLE SCHOOL  
 MECHANICAL ROOM PLAN,  
 MECHANICAL ROOM SECTION,  
 DETAILS

**A-202**



**Robertson Sherwood Architects**  
 132 EAST BROADWAY, SUITE 540  
 EUGENE, OREGON 97401  
 541-342-8077  
 www.robertsonsherwood.com



**GENERAL NOTES**

- SEE SHEET A-102 FOR TYPICAL ROOF ASSEMBLY.
- PROVIDE PRE-FINISHED SHEET METAL FOR EXPOSED METAL FLASHING UNLESS OTHERWISE NOTED.
- PROVIDE PRE-FINISHED FASTENERS TO MATCH COLOR OF SHEET METAL WHERE FASTENERS ARE EXPOSED.

**MULTISITE ROOFING 2017**  
**Kelly Middle School**  
**850 Howard Ave, Eugene, OR**  
**Edgewood Elementary School**  
**577 E. 46th Ave, Eugene, OR**

MARK	DATE	DESCRIPTION

ISSUE DATE: 8 MAY 2017  
 ISSUE: CONSTRUCTION DOCUMENTS  
 PROJECT NO: 1707  
 DRAWN BY: BDH  
 CHECKED BY: JMR  
© ROBERTSON SHERWOOD ARCHITECTS PC 2017 ORIGINAL SHEET SIZE: 24"X36"

EDGEWOOD ELEMENTARY SCHOOL  
 ROOF DETAILS