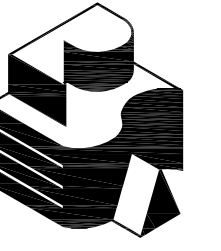
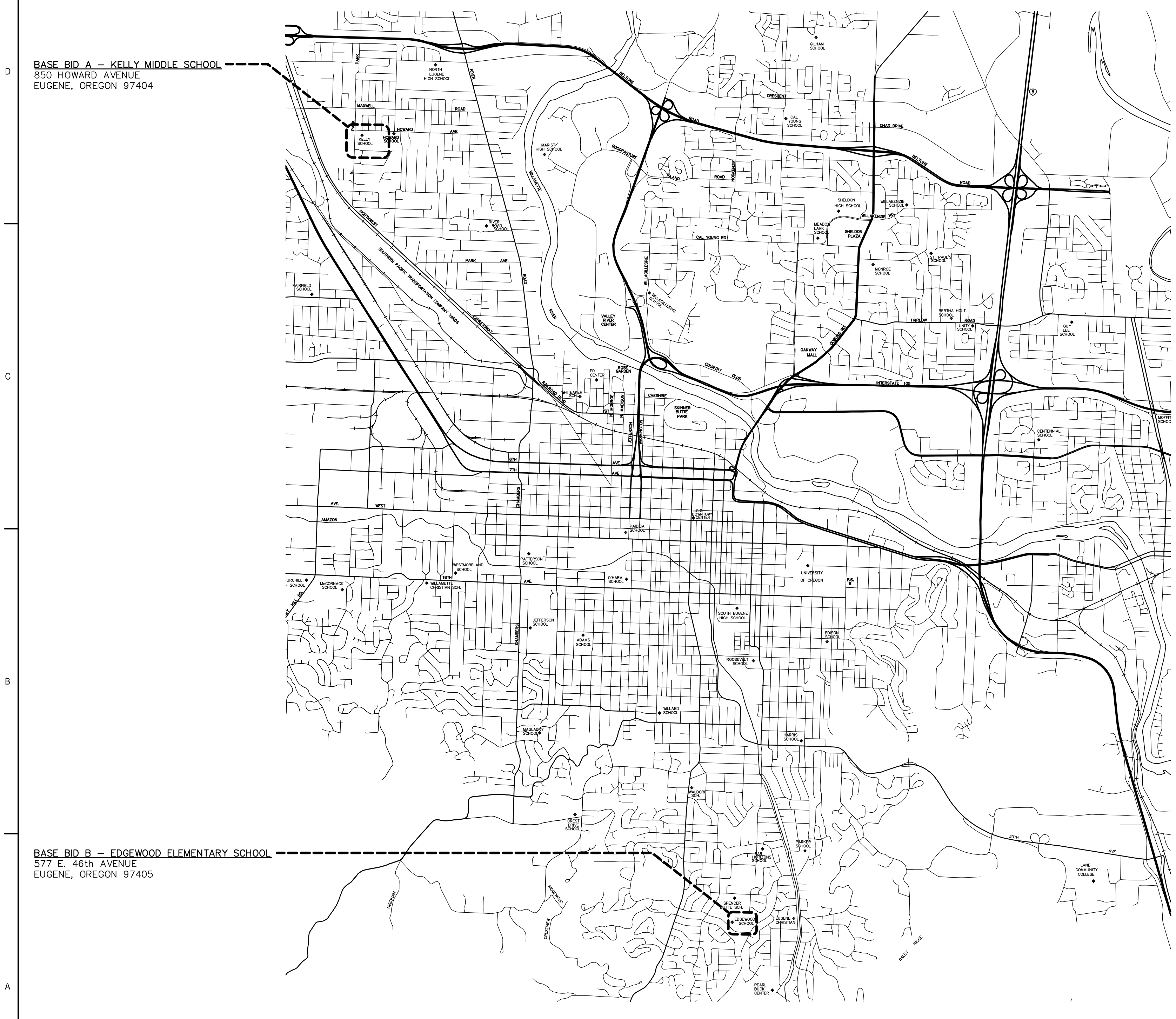


Multisite Roofing 2017

Kelly Middle School and Edgewood Elementary School Eugene School District 4J Eugene, Oregon C.I.P. #420.780.209



Robertson/Sherwood Architects pc
132 EAST BROADWAY, SUITE 540
EUGENE, OREGON 97401
541-342-8077
www.robertsonsherwood.com



PROJECT TEAM

OWNER

EUGENE PUBLIC SCHOOL DISTRICT 4J
715 W. 4th AVENUE
EUGENE, OREGON 97402
541-790-7417
541-790-7420 (FAX)

ARCHITECT

ROBERTSON/SHERWOOD/ARCHITECTS pc
132 E. BROADWAY, SUITE 540
EUGENE, OREGON 97401
541-324-8077
541-345-4302 (FAX)

SHEET INDEX

GENERAL

A-001 COVER SHEET, VICINITY MAP
A-002 SITE PLANS, SCOPE OF WORK, GENERAL NOTES, FASTENING SCHEDULE

ARCHITECTURAL

A-101 KELLY MIDDLE SCHOOL ROOF PLAN
A-102 EDGEWOOD ELEMENTARY SCHOOL ROOF PLANS
A-201 KELLY MIDDLE SCHOOL ROOF DETAILS
A-202 KELLY MIDDLE SCHOOL MECHANICAL ROOM PLAN, MECHANICAL ROOM SECTION, DETAILS
A-203 EDGEWOOD ELEMENTARY SCHOOL ROOF DETAILS

ABBREVIATIONS

AV	AIR VENTILATOR
BLKG	BLOCKING
BTW	BETWEEN
BUR	BUILT-UP ROOF
CONT	CONTINUOUS
CNTRFLSHG	COUNTERFLASHING
d	PENNY
DD	DOWNSPOUT DROP
(E)	EXISTING
EA	EACH
EQ	EQUAL
FLSHG	FLASHING
FPA	FALL PROTECTION ANCHOR
GA	GAGE
GALV	GALVANIZED
INSUL	INSULATION
MB	MODIFIED BITUMEN
LVL	LAMINATED VENEER LUMBER
MFR	MANUFACTURER
MIN	MINIMUM
MTL	METAL
(N)	NEW
N.T.S.	NOT TO SCALE
OC	ON CENTER
OD	OVERFLOW DRAIN
OPP	OPPOSITE
PLYWD	PLYWOOD
POLYSO	POLYISOCYANURATE
PT	PRESSURE TREATED
PRE-FIN	PRE-FINISHED
PV	PLUMBING VENT STACK
RD	ROOF DRAIN
REQ'D	REQUIRED
RH	ROOF HATCH
SD	SCUPPER DRAIN
SDS	SIMPSON STRONG-DRIVE SCREW
SHTHG	SHEATHING
SIM	SIMILAR
SM	SHEET METAL
SS	STAINLESS STEEL
TYP	TYPICAL
U.O.N.	UNLESS OTHERWISE NOTED
VERT	VERTICAL
W/	WITH

SYMBOLS

	KEYED NOTE REFERENCE
	DETAIL REFERENCE
	ELEVATION REFERENCE
	BUILDING SECTION REFERENCE

CODE INFORMATION

APPLICABLE CODE: 2014 OREGON STRUCTURAL SPECIALTY CODE, BASED ON 2012 INTERNATIONAL BUILDING CODE
OCCUPANCY: SCHOOL CLASSROOMS: E
CONSTRUCTION TYPES:
KELLY MIDDLE SCHOOL: TYPE V-A
EDGEWOOD ELEMENTARY SCHOOL: TYPE V-A

RE-BID

MULTISITE ROOFING 2017
Kelly Middle School
850 Howard Ave, Eugene, OR
Edgewood Elementary School
577 E. 46th Ave, Eugene, OR

MARK DATE DESCRIPTION

ISSUE DATE: 24 MAY 2017
ISSUE: CONSTRUCTION DRAWINGS

PROJECT NO: 1707
DRAWN BY: BDH
CHECKED BY: JMR

© ROBERTSON/SHERWOOD/ARCHITECTS PC 2017 ORIGINAL SHEET SIZE: 24X36"

COVER SHEET
VICINITY MAP

A1 VICINITY MAP
A-001 NOT TO SCALE



A-001

SCOPE OF WORK

KELLY MIDDLE SCHOOL

- REFER TO SHEET A-101.
- EXISTING BUILT-UP ROOF TO REMAIN. CUT OUT BLISTERS AND OTHER DEFECTS. FILL VOIDS FROM CUTOUTS AND REPAIR VAPOR RETARDER WHERE DAMAGED.
- REMOVE AIR VENTS, ROOF VENTS AND OTHER EQUIPMENT AS REQUIRED TO EXTEND CURBS AND INSTALL FLASHINGS AS INDICATED ON DRAWINGS. REPLACE MOPPED-IN COLLAR FLASHINGS WITH NEW.
- INSTALL FALL PROTECTION ANCHORS.
- INSTALL NEW INSULATION, COVER BOARD, SINGLE-PLY ROOF, FLASHINGS, AND OTHER ITEMS AS DETAILED AND SPECIFIED.
- REINSTALL EQUIPMENT AND FLASHINGS SALVAGED FOR REUSE. PAINT NEW AND EXISTING ROOFTOP EQUIPMENT AND SHEET METAL EXCEPT PRE-FINISHED METAL.

EDGEWOOD ELEMENTARY SCHOOL

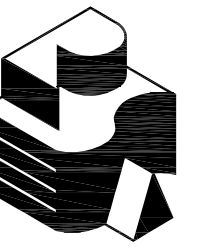
- REFER TO SHEET A-102.
- REMOVE EXISTING ROOF MATERIAL AND SHEET METAL DOWN TO DECK. USE HAND SPUDGING DEMOLITION ONLY; DO NOT USE MECHANICAL SPUDGING. DO NOT SAW CUT ROOF. PROTECT MATERIALS TO BE REUSED.
- REMOVE AIR VENTS, ROOF VENTS AND OTHER EQUIPMENT AS REQUIRED TO EXTEND CURBS AND INSTALL FLASHINGS AS INDICATED ON DRAWINGS. REPLACE MOPPED-IN AIR VENT COLLAR FLASHINGS WITH NEW.
- INSTALL FALL PROTECTION ANCHORS.
- INSTALL NEW BUILT-UP ROOFS, FLASHINGS, DRAINS, AND VENTS AS DETAILED AND SPECIFIED. REINSTALL EQUIPMENT AND FLASHINGS SALVAGED FOR REUSE.
- PAINT NEW PRE-PRIMED AND EXISTING ROOFTOP EQUIPMENT AND SHEET METAL EXCEPT PRE-FINISHED METAL.

GENERAL NOTES

- PROTECT EXISTING BUILDINGS, YARDS, AND ADJACENT ROOF SURFACES FROM DAMAGE AND DEBRIS. REPAIR DAMAGE OCCURRING DURING THE WORK.
- BUILDING DIMENSIONS AND LOCATIONS OF ROOF PENETRATIONS ARE APPROXIMATE. VERIFY DIMENSIONS, LOCATIONS, AND QUANTITIES.
- INSPECT ROOF SUBSTRATE FOR DECAY AND REPORT UNSATISFACTORY CONDITIONS TO ARCHITECT FOR REMEDY.
- MAINTAIN TEMPORARY WATERPROOF COVERINGS UNTIL ROOFING IS COMPLETE.
- REPAIR EXISTING CEILINGS AND LIGHT FIXTURES DAMAGED DURING TEAR-OFF AND REROOFING WORK.
- VERIFY LOCATIONS OF STAGING AREAS WITH OWNER.
- DETAILS SHOW MINIMUM REQUIREMENTS FOR ROOFING COMPONENTS. FOLLOW SELECTED MANUFACTURER'S REQUIREMENTS WHEN THEY EXCEED THESE MINIMUMS.
- DISCONNECT ELECTRICITY IN CONDUITS AFFECTED BY THE WORK, INCLUDING POWER TO MECHANICAL UNITS. RECONNECT AND TEST OPERATION OF UNITS. ELECTRICAL WORK SHALL BE PERFORMED BY LICENSED ELECTRICAL CONTRACTOR.
- AT CHANGES IN ROOF PLANE, EASE EDGES WITH CANT STRIPS AND TAPERED EDGE STRIPS.
- WHERE EXISTING WOOD ROOF DECKING IS EXPOSED TO INTERIOR SPACE BELOW, INSTALL PLASTIC SHEETING TO CATCH DEBRIS DURING DEMOLITION. AFTER PLASTIC IS REMOVED, ENSURE THAT ALL STAPLES AND/OR TAPE FASTENERS ARE ALSO REMOVED.
- USE SHORTEST POSSIBLE FASTENERS REQUIRED TO ACHIEVE MANUFACTURERS' RECOMMENDED PENETRATION.

FASTENING SCHEDULE

MODIFIED BITUMEN FLASHING:	LARGE HEAD SIMPLEX OR APPROVED NAILS VERTICAL SURFACES: 4" O/C HORIZONTAL SURFACES: 8" O/C
METAL FLANGES AT AIR VENTS:	LARGE HEAD HOT DIPPED 12 GA GALV ROOFING NAILS AT 4" O/C
PRE-FINISHED SHEET METAL SKIRTS AT EXHAUST FANS:	PRE-FINISHED SHEET METAL SCREWS WITH NEOPRENE WASHERS AT 8" O/C
PRE-FINISHED FLASHING AND COUNTERFLASHING:	PRE-FINISHED SHEET METAL SCREWS WITH NEOPRENE WASHERS AT 24" O/C
SURFACE MOUNT REGLETS TO CONCRETE OR MASONRY:	COMPRESSION PINS AT 8" O.C. AT REGLET. FILL SEALANT RECEPTACLE WITH SEALANT.
CONTINUOUS CLEATS AND REGLETS TO WOOD:	GALVANIZED NAILS AT 12" O.C.
SPLASH PANS:	(2) POP RIVETS TO SHEET METAL COUNTERFLASHING WHERE POSSIBLE; OTHERWISE, SET IN MASTIC.
PLYWOOD BACKING:	10d GALV NAILS AT 12" OC AT WOOD FRAMING. AT CONCRETE OR CMU: COMPRESSION PINS AT 18" OC, STAGGERED PATTERN
OVERFLOWS, SCUPPER DRAINS, DOWNSPOUT DROPS:	LARGE HEAD HOT DIPPED 12 GA GALVANIZED ROOFING NAIL AT EACH CORNER
METAL GRAVEL STOP:	LARGE HEAD HOT DIPPED 12 GA GALVANIZED ROOFING NAIL AT 3" OC; STAGGERED PATTERN



Robertson|Sherwood|Architects
132 EAST BROADWAY, SUITE 540
EUGENE, OREGON 97401
541-342-8077
www.robertsonsherwood.com



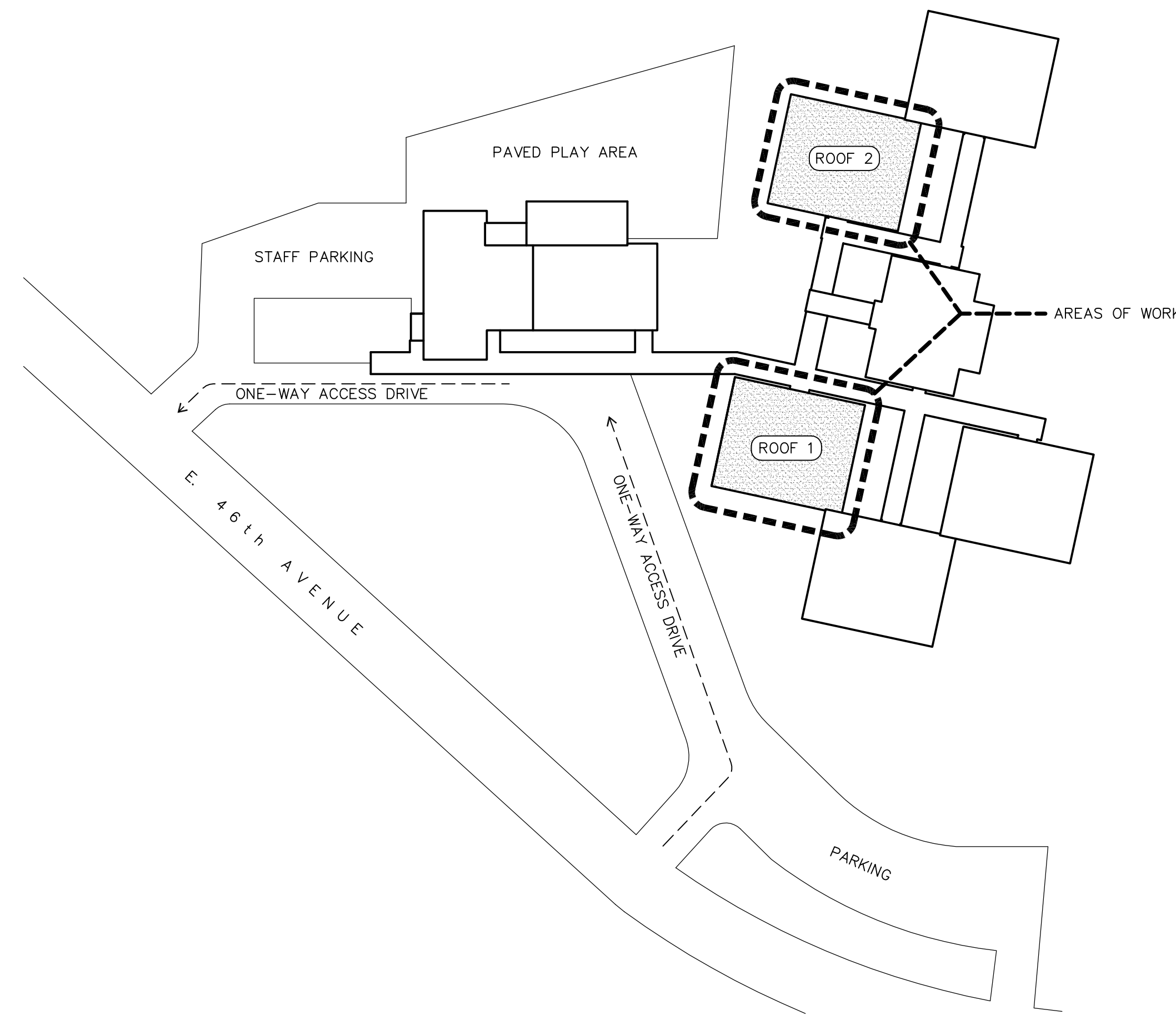
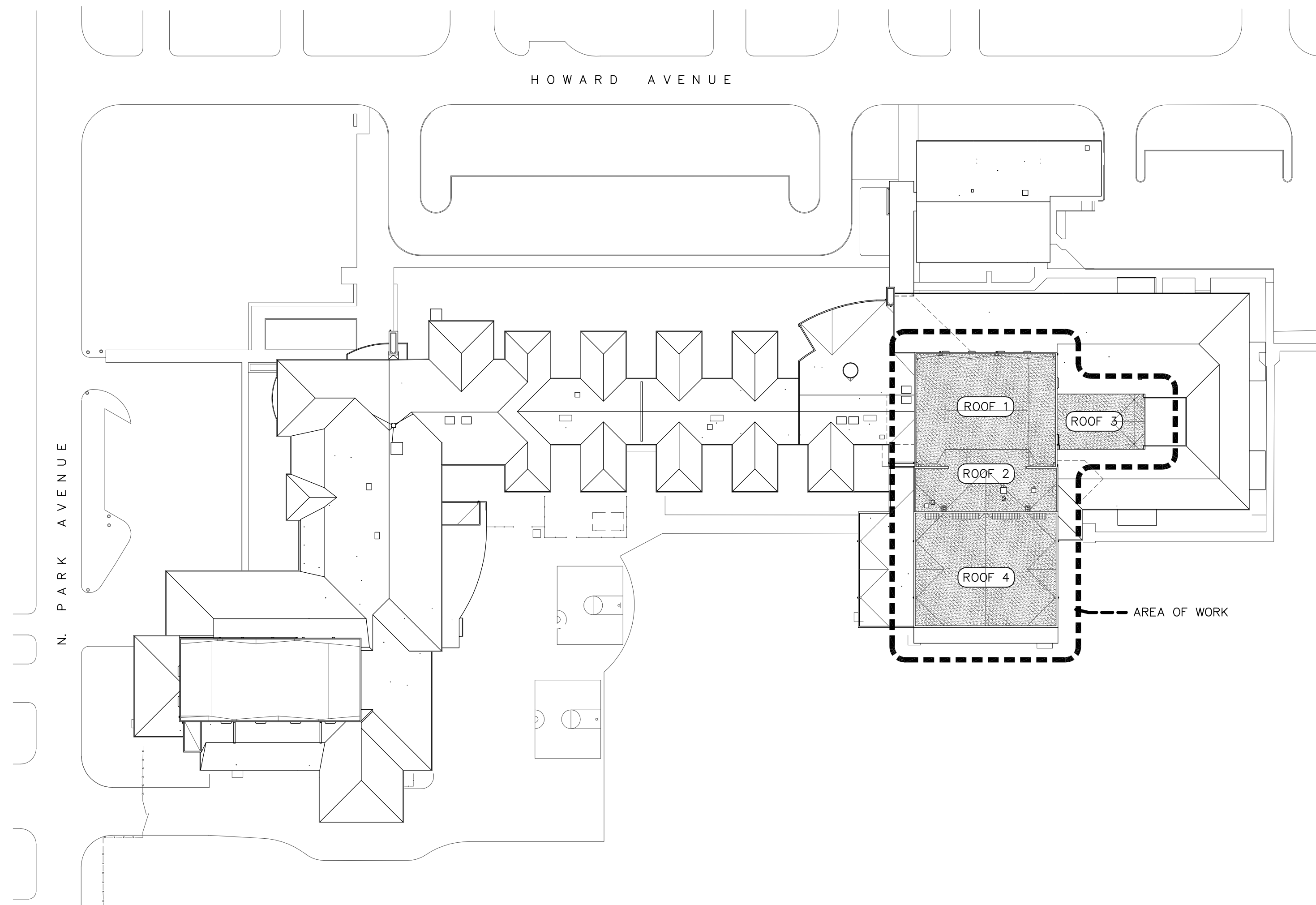
RE-BID

MULTISITE ROOFING 2017
Kelly Middle School
850 Howard Ave, Eugene, OR
Edgewood Elementary School
577 E. 46th Ave, Eugene, OR

MARK	DATE	DESCRIPTION
------	------	-------------

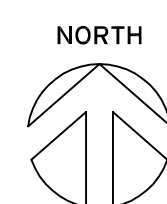
ISSUE DATE:	24 MAY 2017
ISSUE:	CONSTRUCTION DRAWINGS
PROJECT NO:	1707
DRAWN BY:	BDH
CHECKED BY:	JMR
<small>© ROBERTSON SHERWOOD ARCHITECTS PC 2017 ORIGINAL SHEET SIZE: 24"X36"</small>	

SITE PLANS
SCOPE OF WORK
GENERAL NOTES
FASTENING SCHEDULE



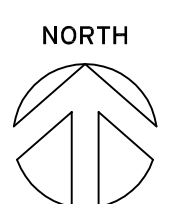
A1 KELLY MIDDLE SCHOOL SITE PLAN
NOT TO SCALE

850 HOWARD AVENUE, EUGENE, OR 97404

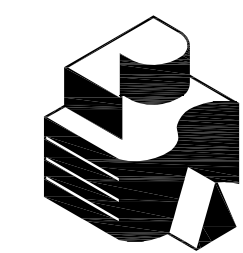


A2 EDGEWOOD ELEMENTARY SCHOOL OVERALL ROOF PLAN
NOT TO SCALE

577 EAST 46th AVENUE, EUGENE, OREGON 97405



A-002



Robertson Sherwood Architects PC
 132 EAST BROADWAY, SUITE 540
 EUGENE, OREGON 97401
 541-342-8077
 www.robertsonsherwood.com



ROOF PLAN LEGEND

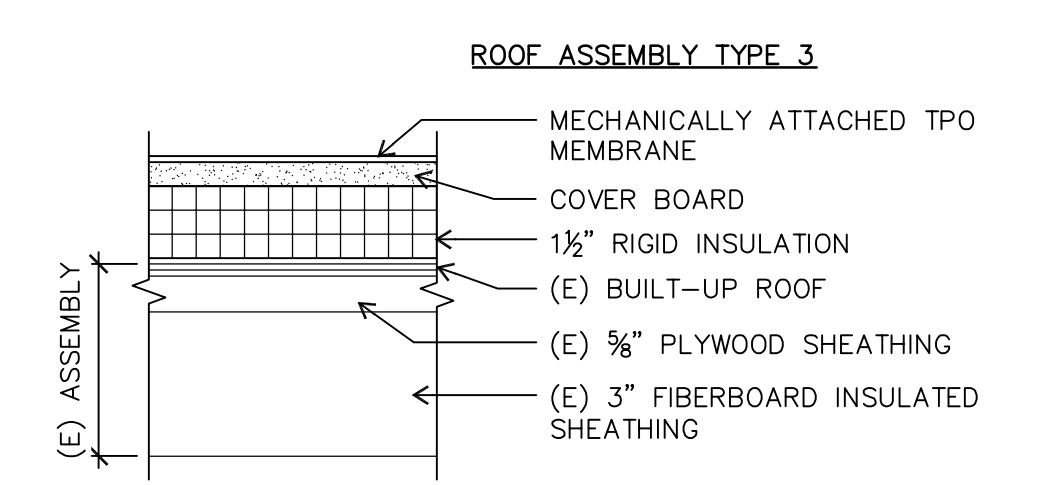
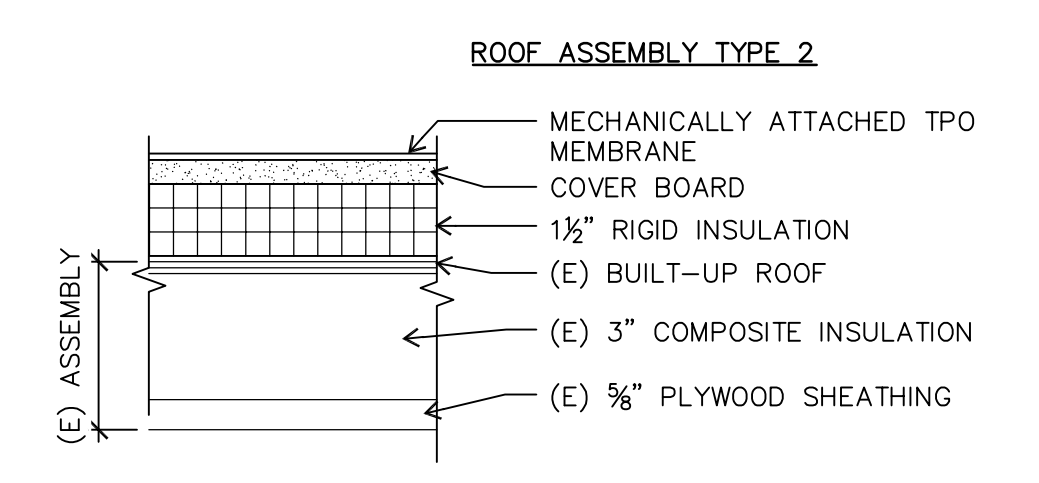
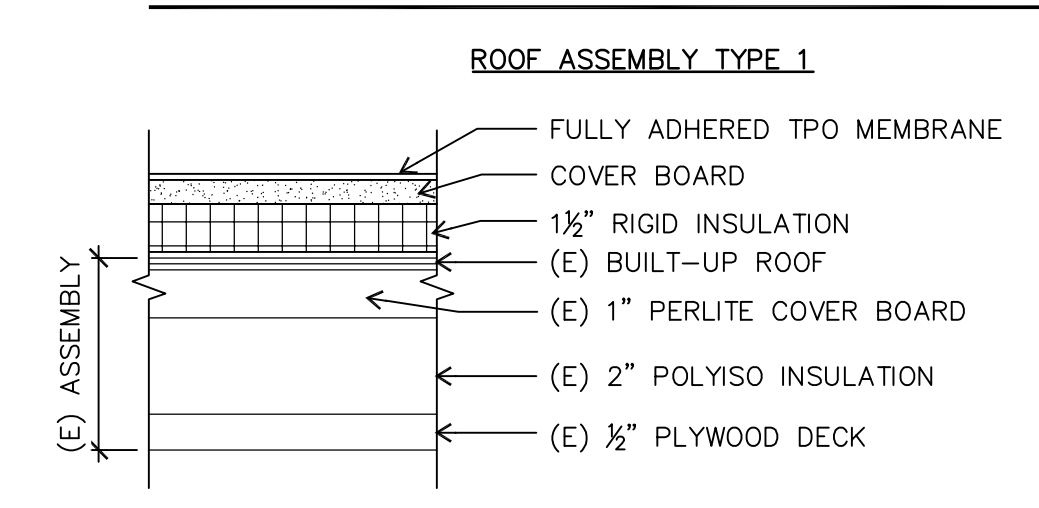
NOTE: SIZES OF ROOF PENETRATIONS AND CURBS INDICATED IN INCHES.

- NEW TPO MEMBRANE
- NEW WALKWAY PADS
- (E) SLOPE
- (N) SLOPE
- AV (E) AIR VENTILATOR
- DD (E) DOWNSPOUT DROP
- FPA (N) FALL PROTECTION ANCHOR
- TYPE 1
- TYPE 2
- TYPE 4
- PV (E) PLUMBING VENT
- RD/OD (E) ROOF DRAIN & OVERFLOW DRAIN
- RH (N) ROOF HATCH
- SD (E) SCUPPER DRAIN

GENERAL NOTES

- EXISTING BUILT-UP ROOF TO REMAIN. CUT OUT BLISTERS AND OTHER DEFECTS. FILL VOIDS FROM CUTOUTS AND REPAIR VAPOR RETARDER WHERE DAMAGED.
- REMOVE AIR VENTS, ROOF VENTS AND OTHER EQUIPMENT AS REQUIRED TO EXTEND CURBS AND INSTALL FLASHINGS AS INDICATED ON DRAWINGS. REPLACE MOPPED-IN COLLAR FLASHINGS WITH NEW.
- INSTALL NEW INSULATION, COVER BOARD, SINGLE-PLY ROOF, FLASHINGS, AND OTHER ITEMS AS DETAILED AND SPECIFIED.
- REINSTALL EQUIPMENT AND FLASHINGS SALVAGED FOR REUSE. PAINT NEW AND EXISTING ROOFTOP EQUIPMENT AND SHEET METAL EXCEPT PRE-FINISHED METAL.
- EXTEND CURBS, PLUMBING VENTS, AND OTHER ITEMS WHERE NECESSARY AS INDICATED IN DETAILS.

ROOF TYPES



RE-BID

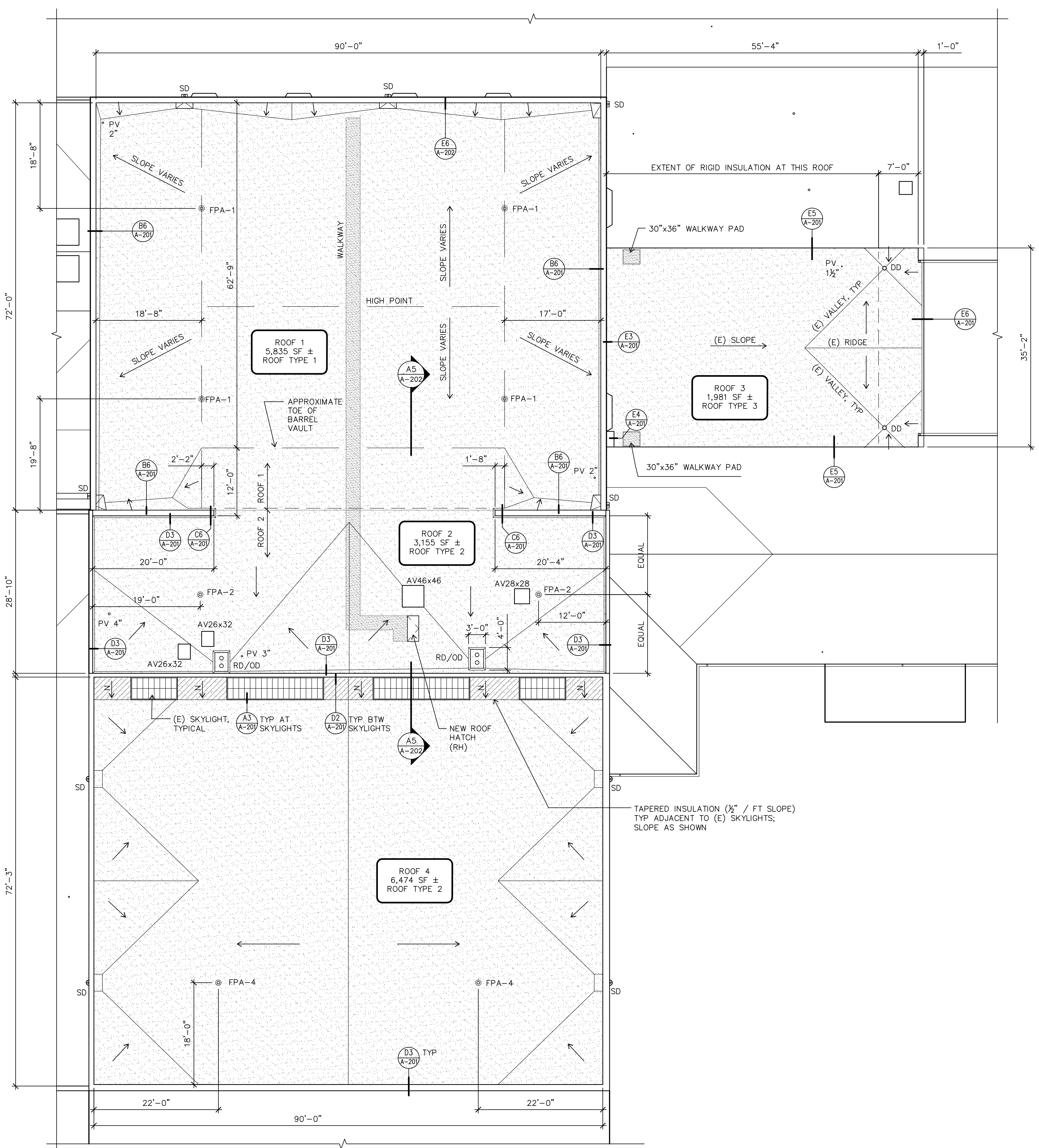
MULTISITE ROOFING 2017
Kelly Middle School
850 Howard Ave, Eugene, OR
Edgewood Elementary School
577 E. 46th Ave, Eugene, OR

MARK	DATE	DESCRIPTION

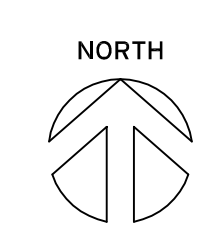
ISSUE DATE: 24 MAY 2017
 ISSUE: CONSTRUCTION DRAWINGS
 PROJECT NO: 1707
 DRAWN BY: BDH
 CHECKED BY: JMR

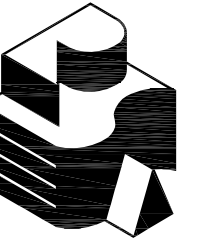
KELLY MIDDLE SCHOOL
 ROOF PLAN,
 MECHANICAL ROOM PLAN,
 MECHANICAL ROOM SECTION

A-101



B1
A-101
KELLY MIDDLE SCHOOL ROOF PLAN
 1" = 10'-0"





Robertson Sherwood Architects
 132 EAST BROADWAY, SUITE 540
 EUGENE, OREGON 97401
 541-342-8077
 www.robertsonsherwood.com



RE-BID

MULTISITE ROOFING 2017
Kelly Middle School
850 Howard Ave, Eugene, OR
Edgewood Elementary School
577 E. 46th Ave, Eugene, OR

MARK DATE DESCRIPTION

ISSUE DATE: 24 MAY 2017

ISSUE: CONSTRUCTION DRAWINGS

PROJECT NO: 1707

DRAWN BY: BDH

CHECKED BY: JMR

© ROBERTSON SHERWOOD ARCHITECTS PC 2017 ORIGINAL SHEET SIZE: 24"X36"

EDGEWOOD ELEMENTARY SCHOOL
 ROOF PLANS

A-102

ROOF PLAN LEGEND

NOTE: SIZES OF ROOF PENETRATIONS AND CURBS INDICATED IN INCHES.

- (N) TAPERED INSULATION; SLOPE = 3/8" PER FOOT
- (E) SLOPE
- (N) SLOPE
- AV (E) AIR VENTILATOR
- REF ROOF EXHAUST FAN
- FPA (N) FALL PROTECTION ANCHOR
- PV (E) PLUMBING VENT
- SD SCUPPER DRAIN

GENERAL NOTES

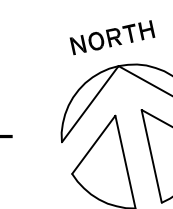
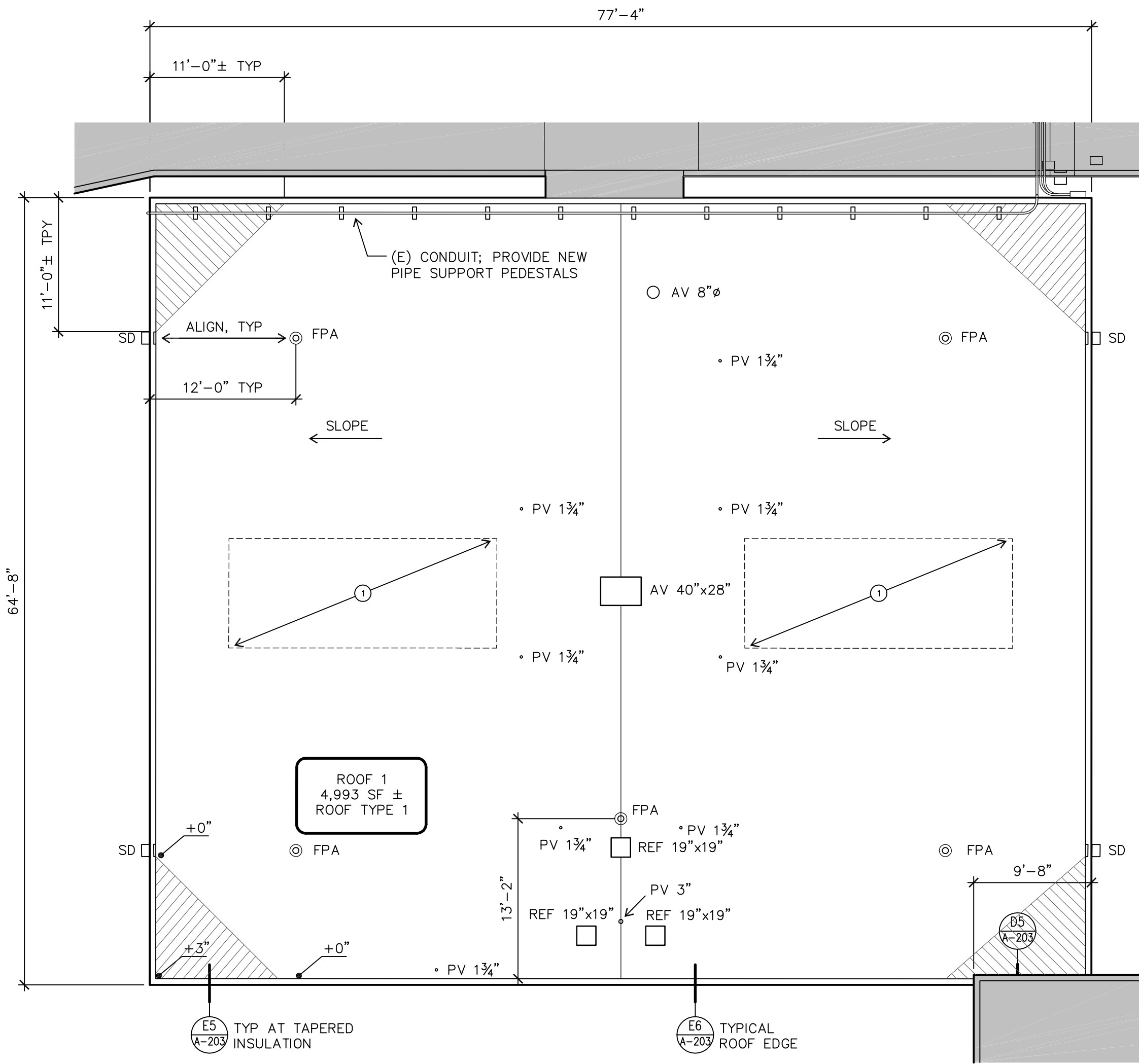
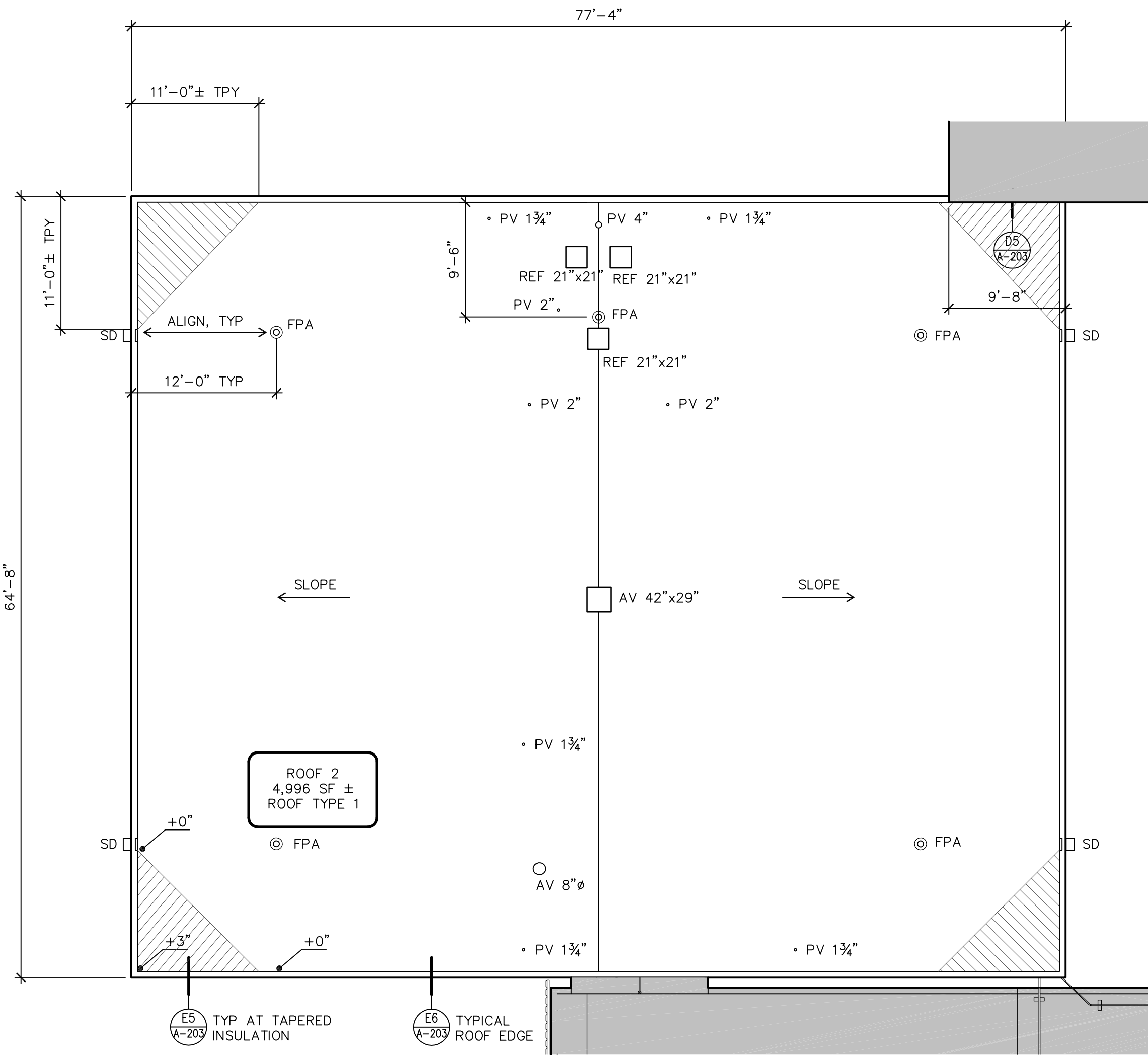
1. REMOVE EXISTING ROOF MATERIAL AND SHEET METAL DOWN TO DECK. USE HAND SPUDGING DEMOLITION ONLY; DO NOT USE MECHANICAL SPUDGING. DO NOT SAW CUT ROOF. PROTECT MATERIALS TO BE REUSED.
2. REMOVE AIR VENTS, ROOF VENTS AND OTHER EQUIPMENT AS REQUIRED TO EXTEND CURBS AND INSTALL FLASHINGS AS INDICATED ON DRAWINGS. REPLACE MOPPED-IN AIR VENT COLLAR FLASHINGS WITH NEW.
3. INSTALL FALL PROTECTION ANCHORS.
4. INSTALL NEW BUILT-UP ROOFS, FLASHINGS, DRAINS, AND VENTS AS DETAILED AND SPECIFIED. REINSTALL EQUIPMENT AND FLASHINGS SALVAGED FOR REUSE.
5. PAINT NEW PRE-PRIMED AND EXISTING ROOFTOP EQUIPMENT AND SHEET METAL EXCEPT PRE-FINISHED METAL.

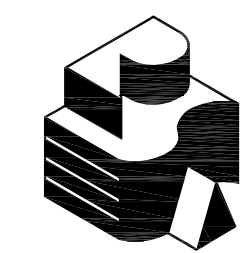
KEY NOTES

1. FILL LOW AREAS W/ 3/4" PERLITE EMBEDDED INTO HOT ASPHALT OVER BASE SHEET. INSTALL (1) ADDITIONAL INNER PLY OVER AREA OF PERLITE ONLY.

ROOF ASSEMBLY

- TEAR OFF (E) ROOF TO DECK.
- NEW ROOF ASSEMBLY:
 - BASE SHEET
 - (3) INNER PLIES
 - SBS MODIFIED CAP SHEET





Robertson/Sherwood Architects
 132 EAST BROADWAY, SUITE 540
 EUGENE, OREGON 97401
 541-342-8077
 www.robertsonsherwood.com



RE-BID

MULTISITE ROOFING 2017
Kelly Middle School
850 Howard Ave, Eugene, OR
Edgewood Elementary School
577 E. 46th Ave, Eugene, OR

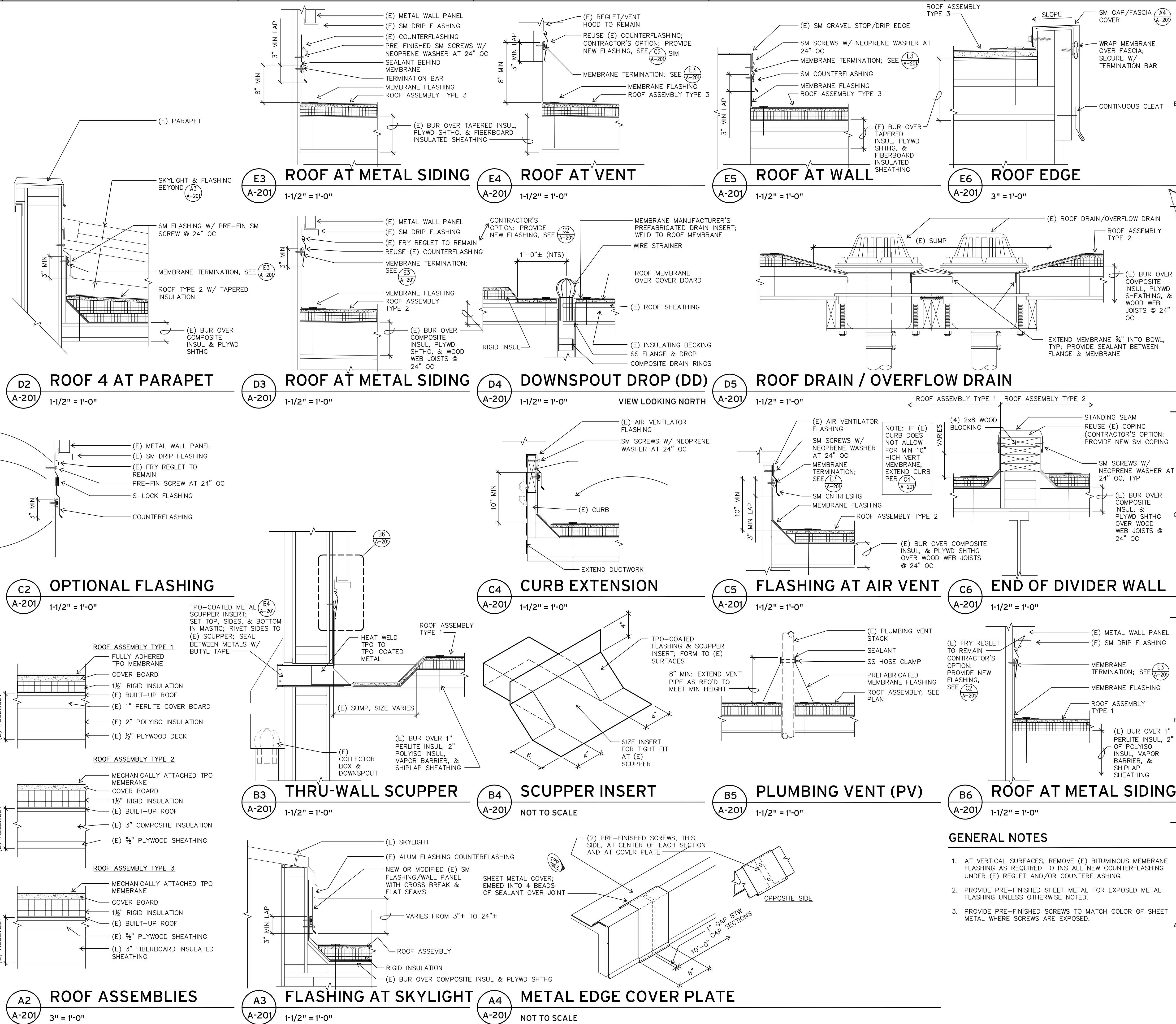
MARK DATE DESCRIPTION

ISSUE DATE: 24 MAY 2017
 ISSUE: CONSTRUCTION DRAWINGS

PROJECT NO: 1707
 DRAWN BY: BDH
 CHECKED BY: JMR

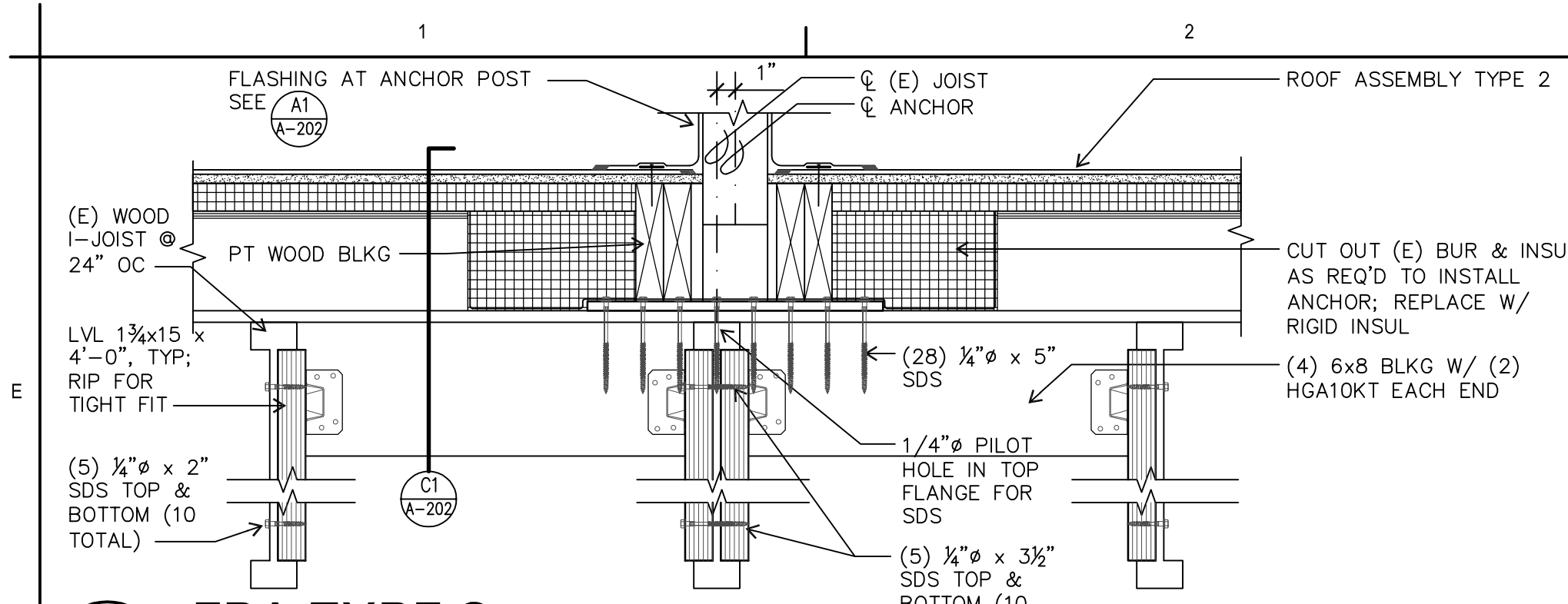
© ROBERTSON/SHERWOOD ARCHITECTS PC 2017 ORIGINAL SHEET SIZE: 24"X36"
 KELLY MIDDLE SCHOOL
 ROOF DETAILS

A-201

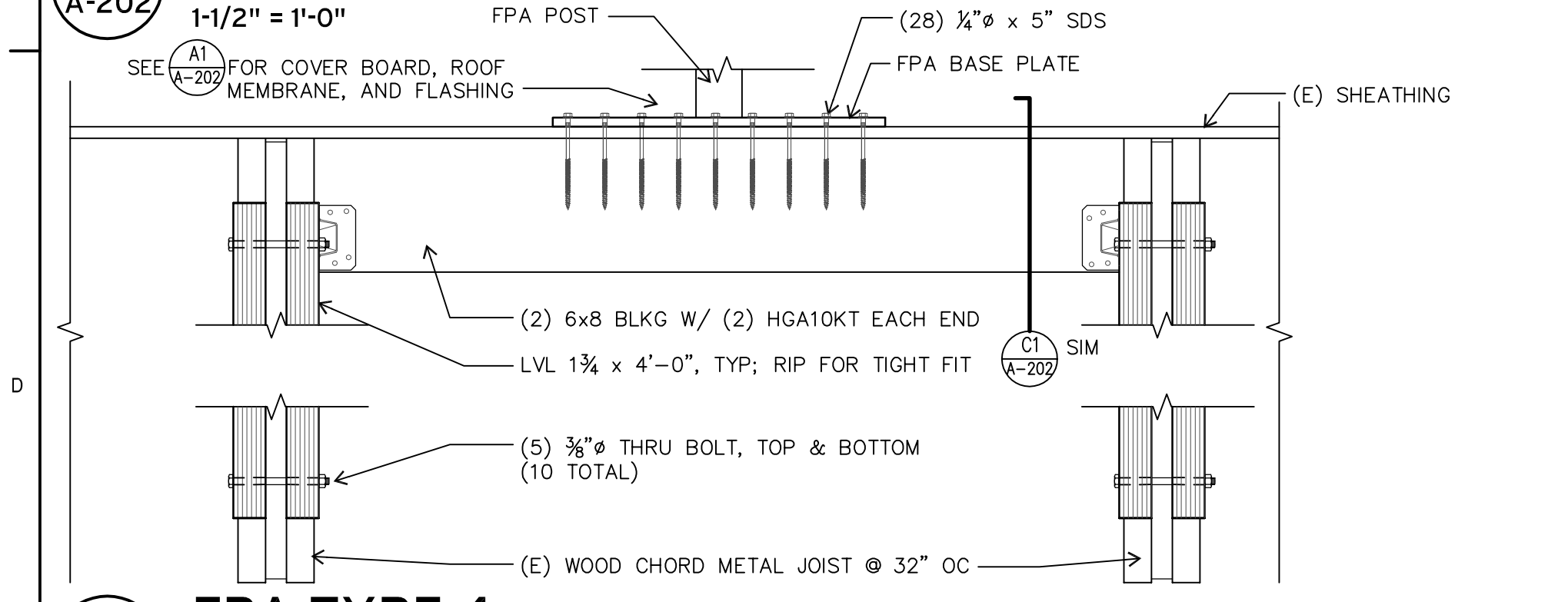


GENERAL NOTES

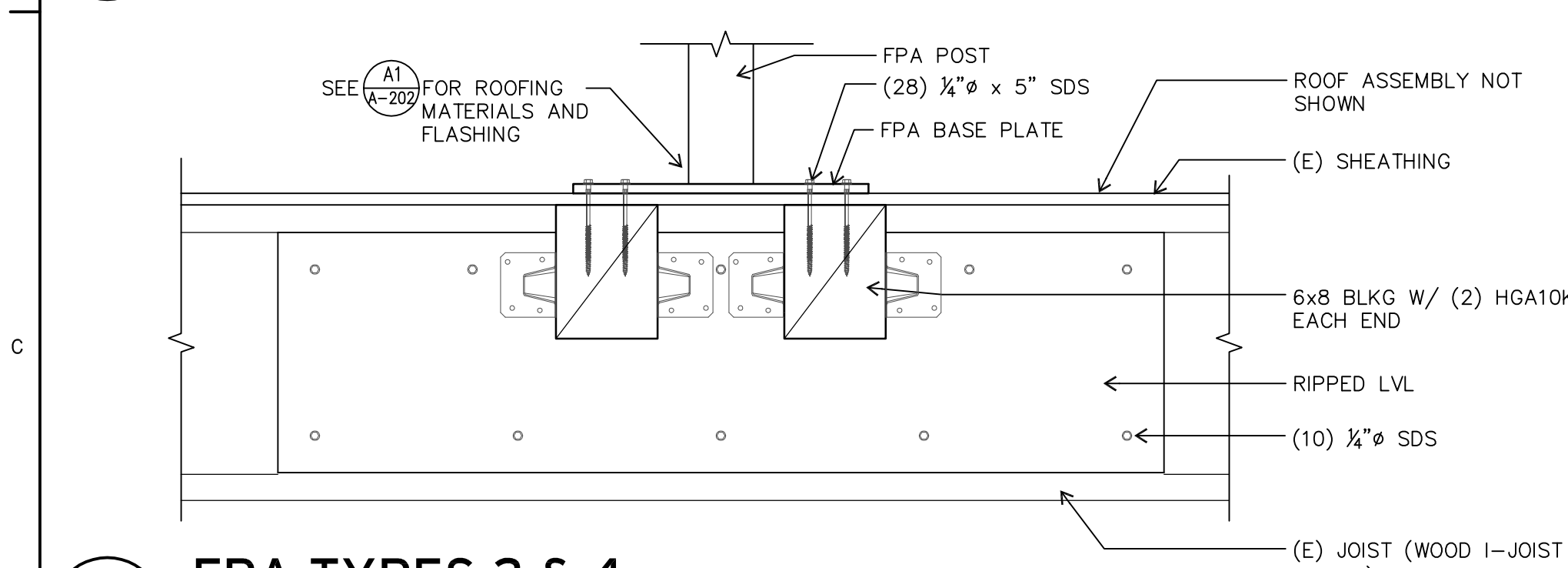
1. AT VERTICAL SURFACES, REMOVE (E) BITUMINOUS MEMBRANE FLASHING AS REQUIRED TO INSTALL NEW COUNTERFLASHING UNDER (E) REGLET AND/OR COUNTERFLASHING.
2. PROVIDE PRE-FINISHED SHEET METAL FOR EXPOSED METAL FLASHING UNLESS OTHERWISE NOTED.
3. PROVIDE PRE-FINISHED SCREWS TO MATCH COLOR OF SHEET METAL WHERE SCREWS ARE EXPOSED.



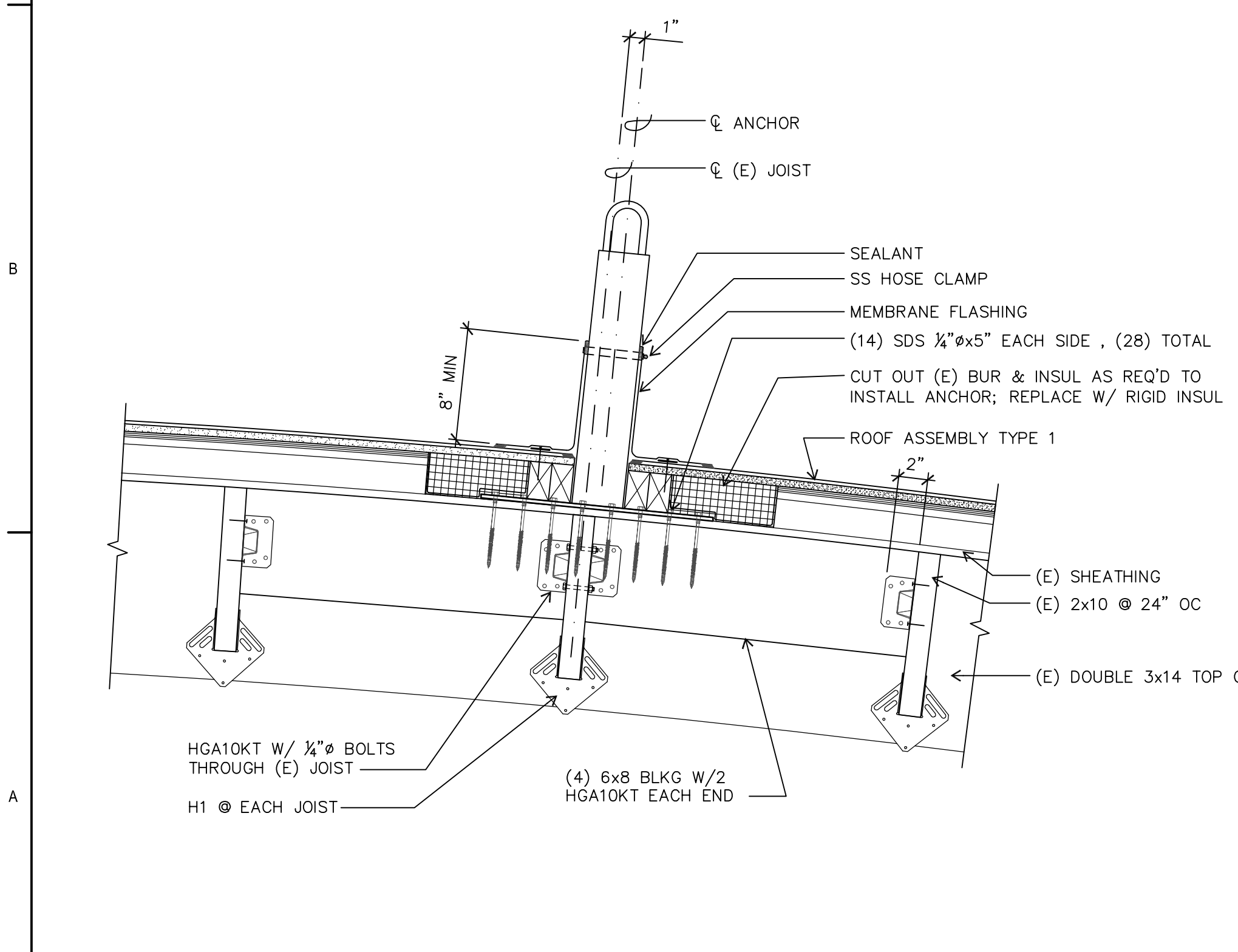
E1 FPA TYPE 2
A-202 1-1/2" = 1'-0"



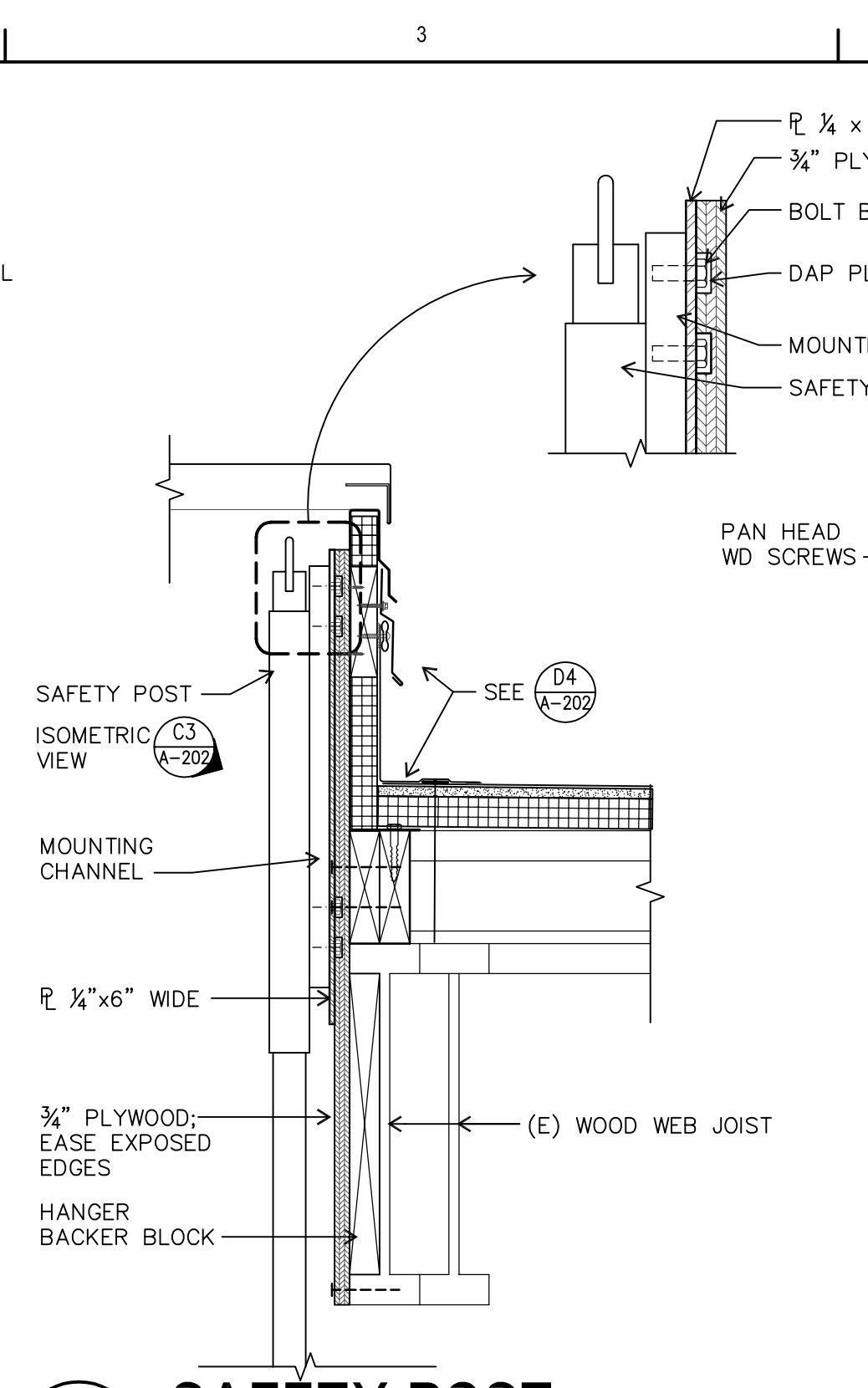
D1 FPA TYPE 4
A-202 1-1/2" = 1'-0"



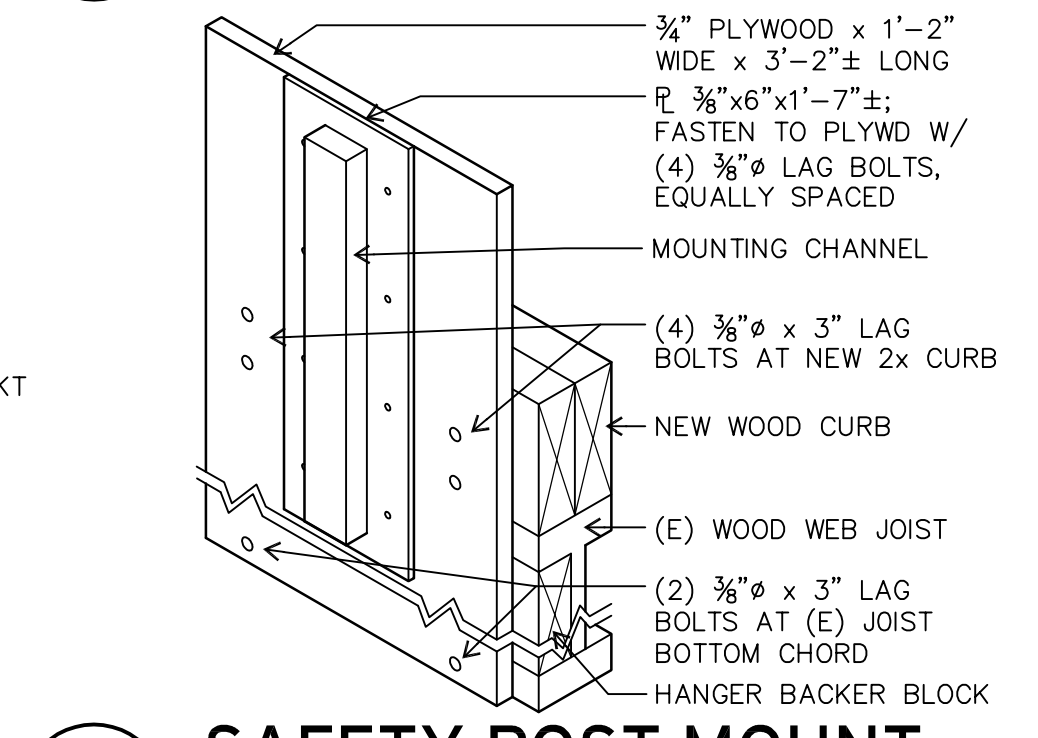
C1 FPA TYPES 2 & 4
A-202 1-1/2" = 1'-0"



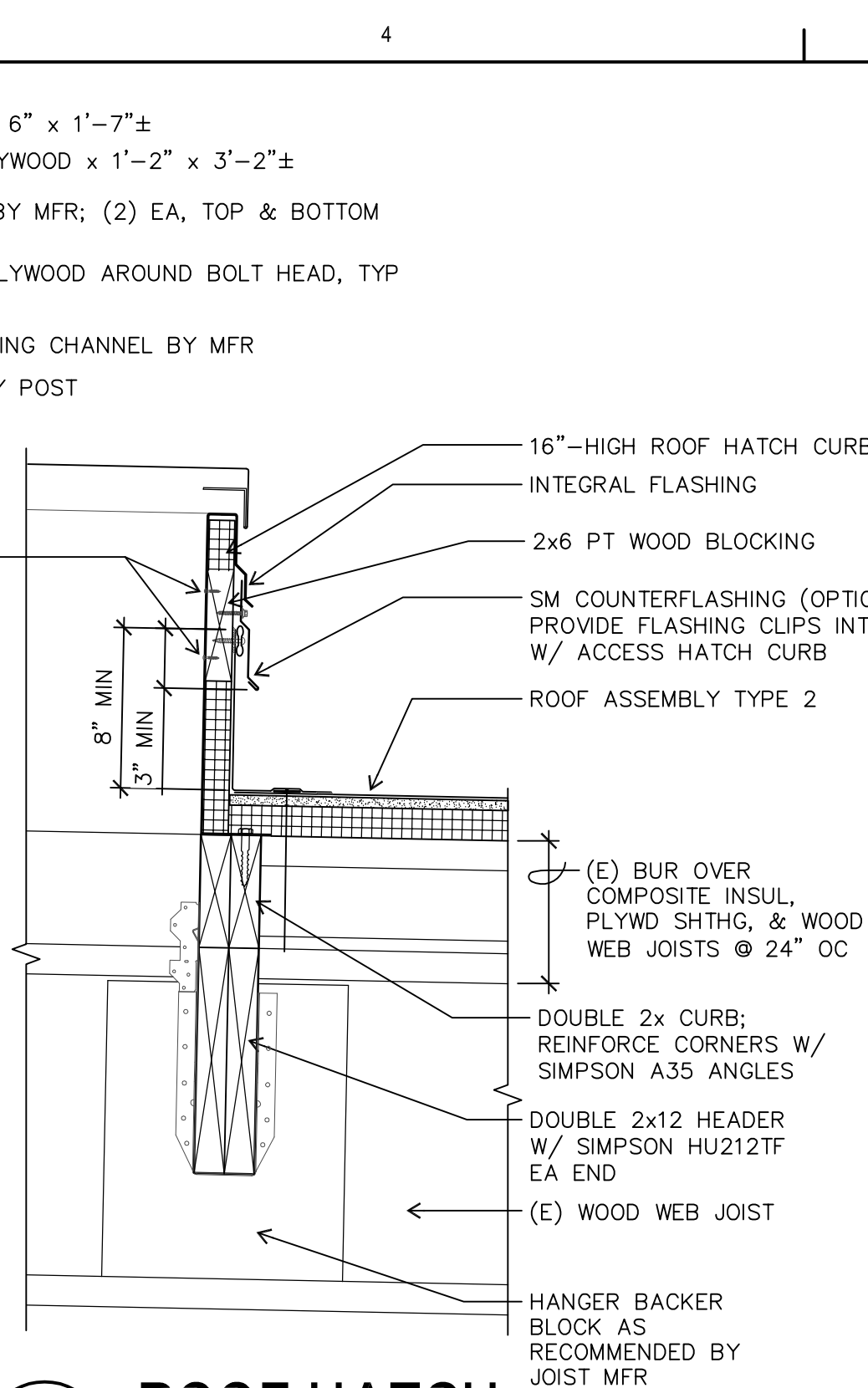
A1 FPA TYPE 1
A-202 1-1/2" = 1'-0"



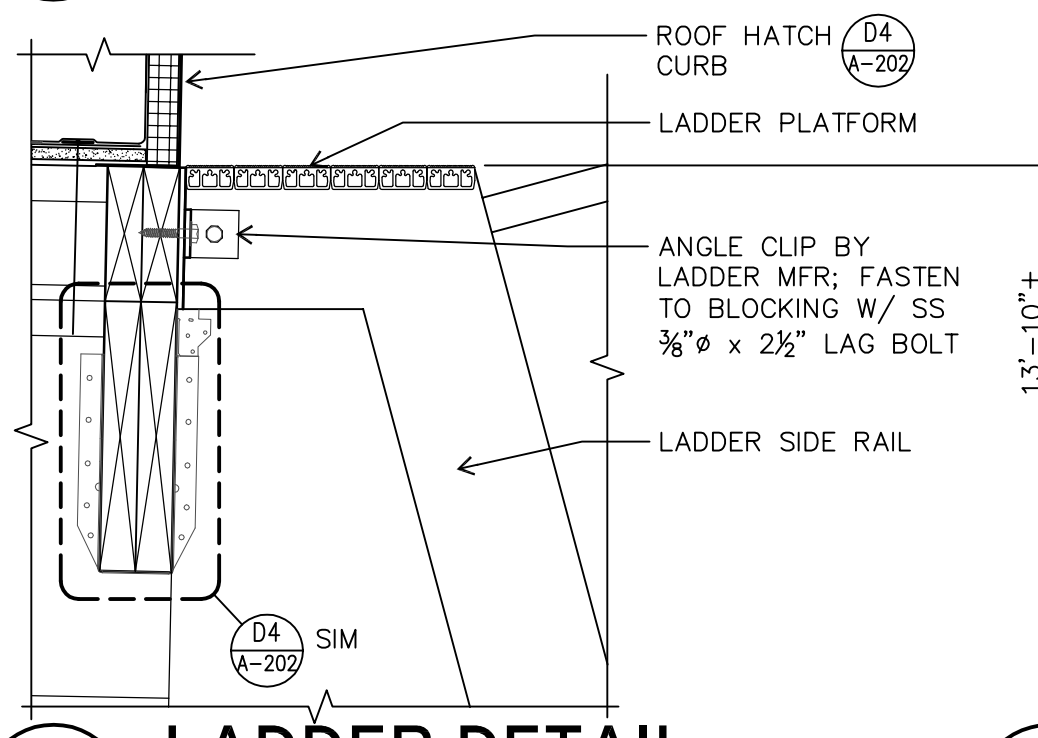
D3 SAFETY POST
A-202 1-1/2" = 1'-0"



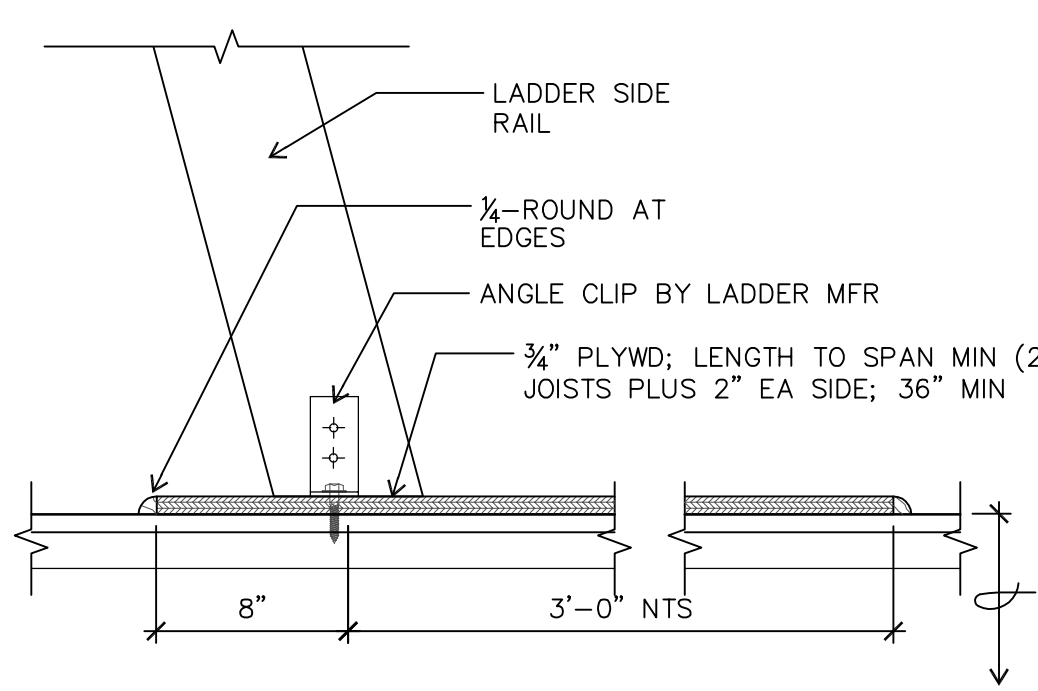
C3 SAFETY POST MOUNT
A-202 NOT TO SCALE



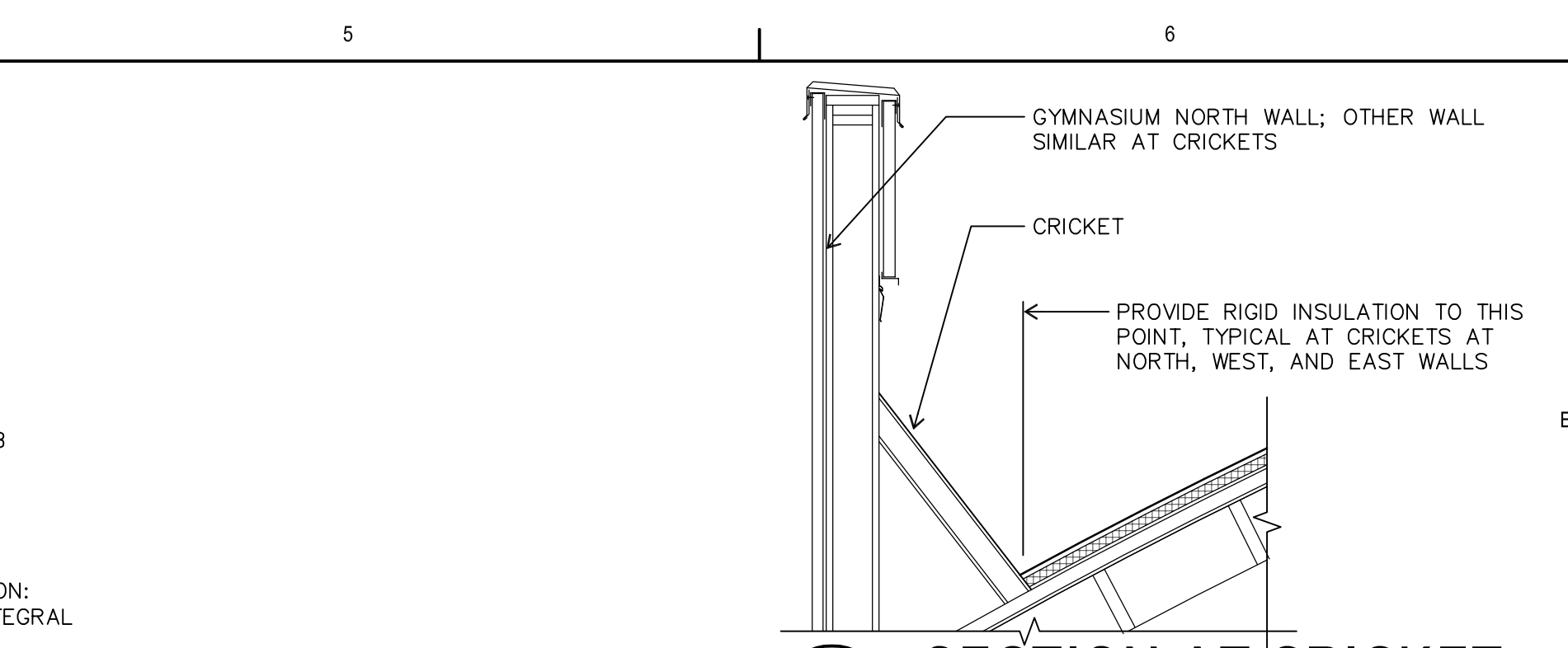
D4 ROOF HATCH
A-202 1-1/2" = 1'-0"



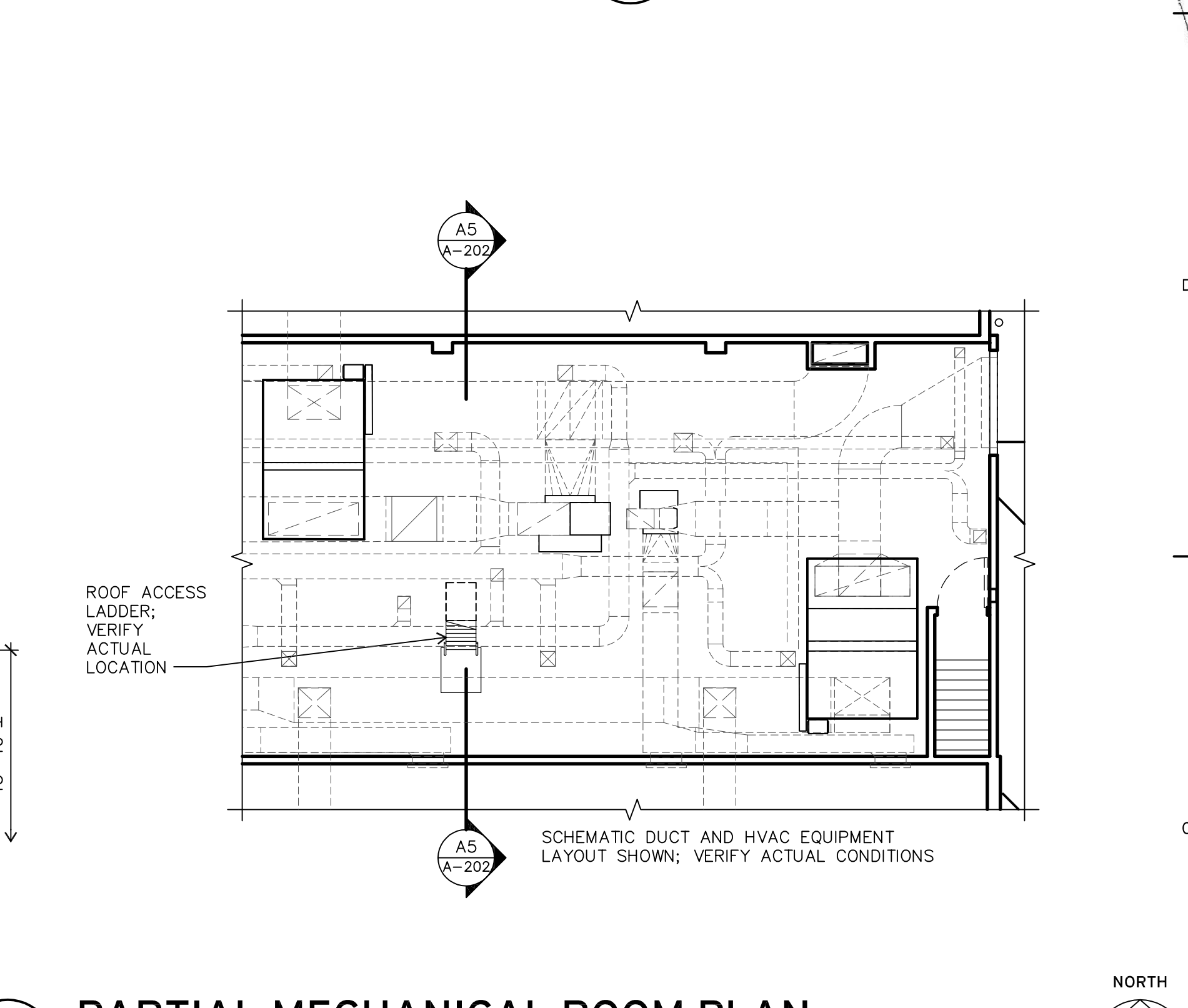
C4 LADDER DETAIL
A-202 1-1/2" = 1'-0"



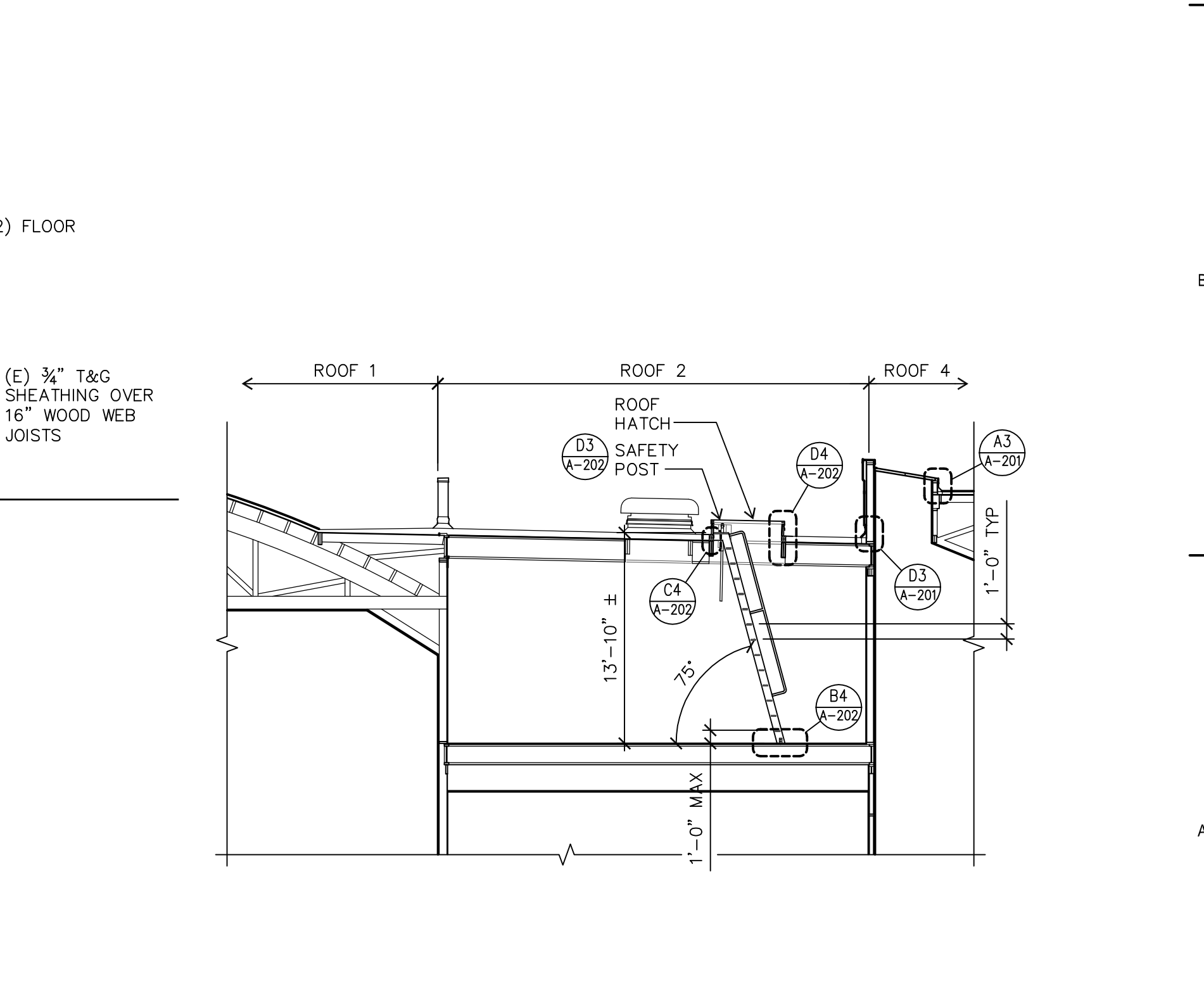
B4 LADDER AT FLOOR
A-202 1-1/2" = 1'-0"



E6 SECTION AT CRICKET
A-202 1/2" = 1'-0"



C5 PARTIAL MECHANICAL ROOM PLAN
A-202 1/8" = 1'-0"



A5 SECTION AT MECHANICAL ROOF
A-202 1/8" = 1'-0"

Robertson/Sherwood/Architects
132 EAST BROADWAY, SUITE 540
EUGENE, OREGON 97401
541-342-8077
www.robertsonsherwood.com

REGISTERED ARCHITECT
JAMES L. ROBERTSON
EUGENE, OREGON
STATE OF OREGON

RE-BID

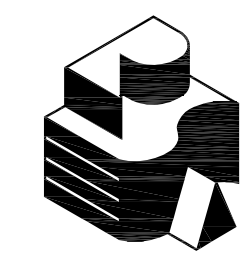
MULTISITE ROOFING 2017
Kelly Middle School
850 Howard Ave, Eugene, OR
Edgewood Elementary School
577 E. 46th Ave, Eugene, OR

MARK	DATE	DESCRIPTION

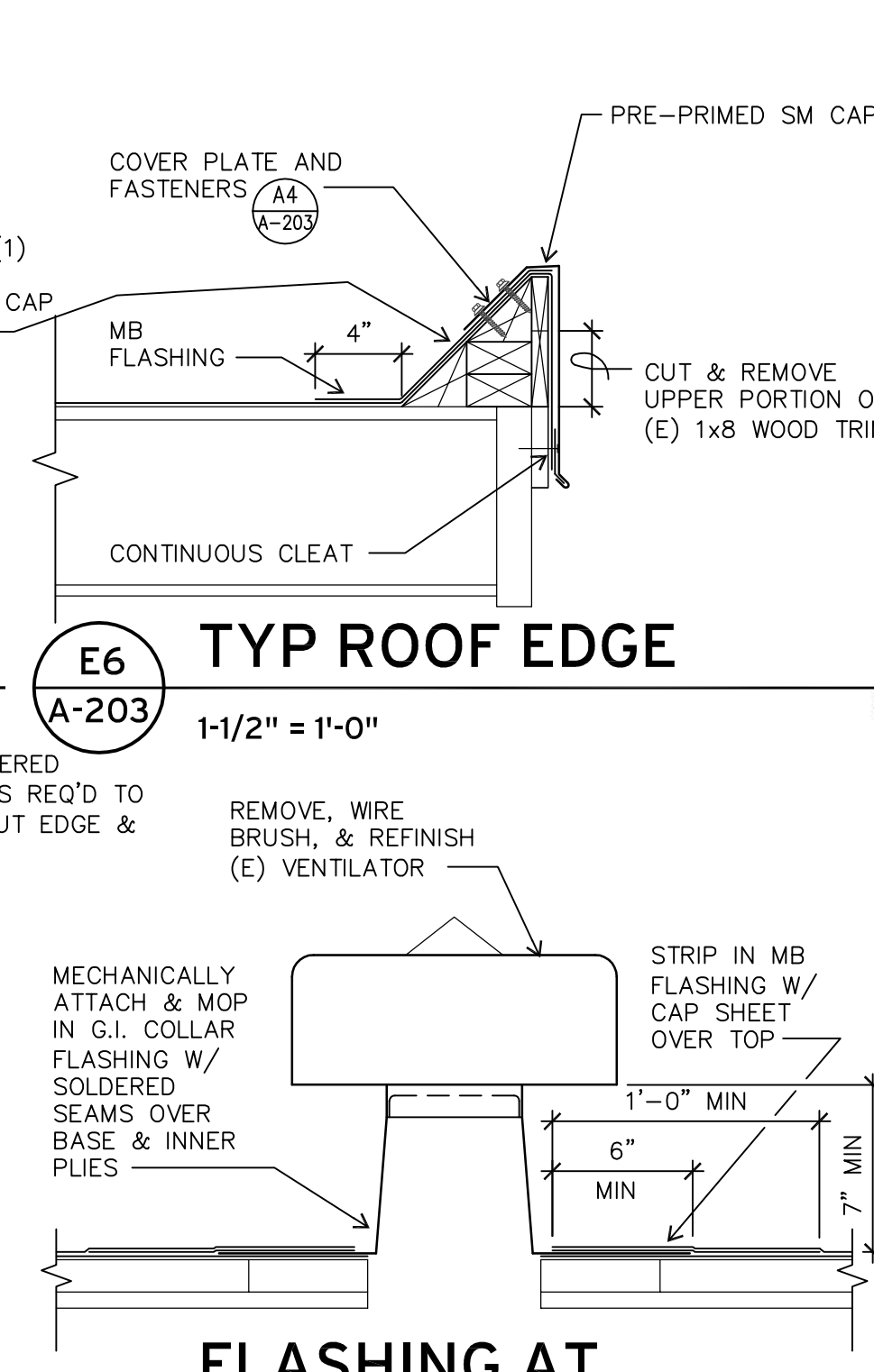
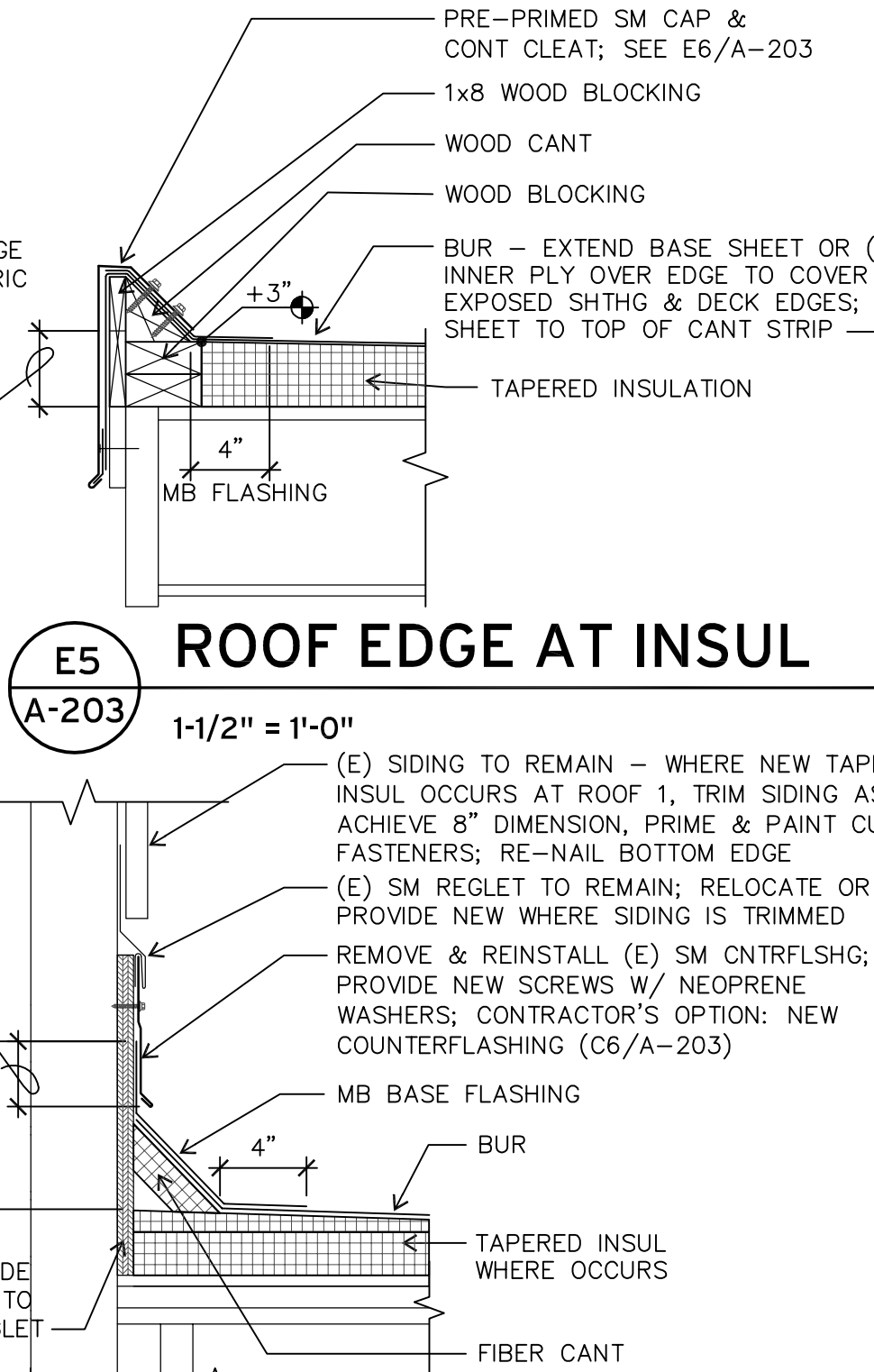
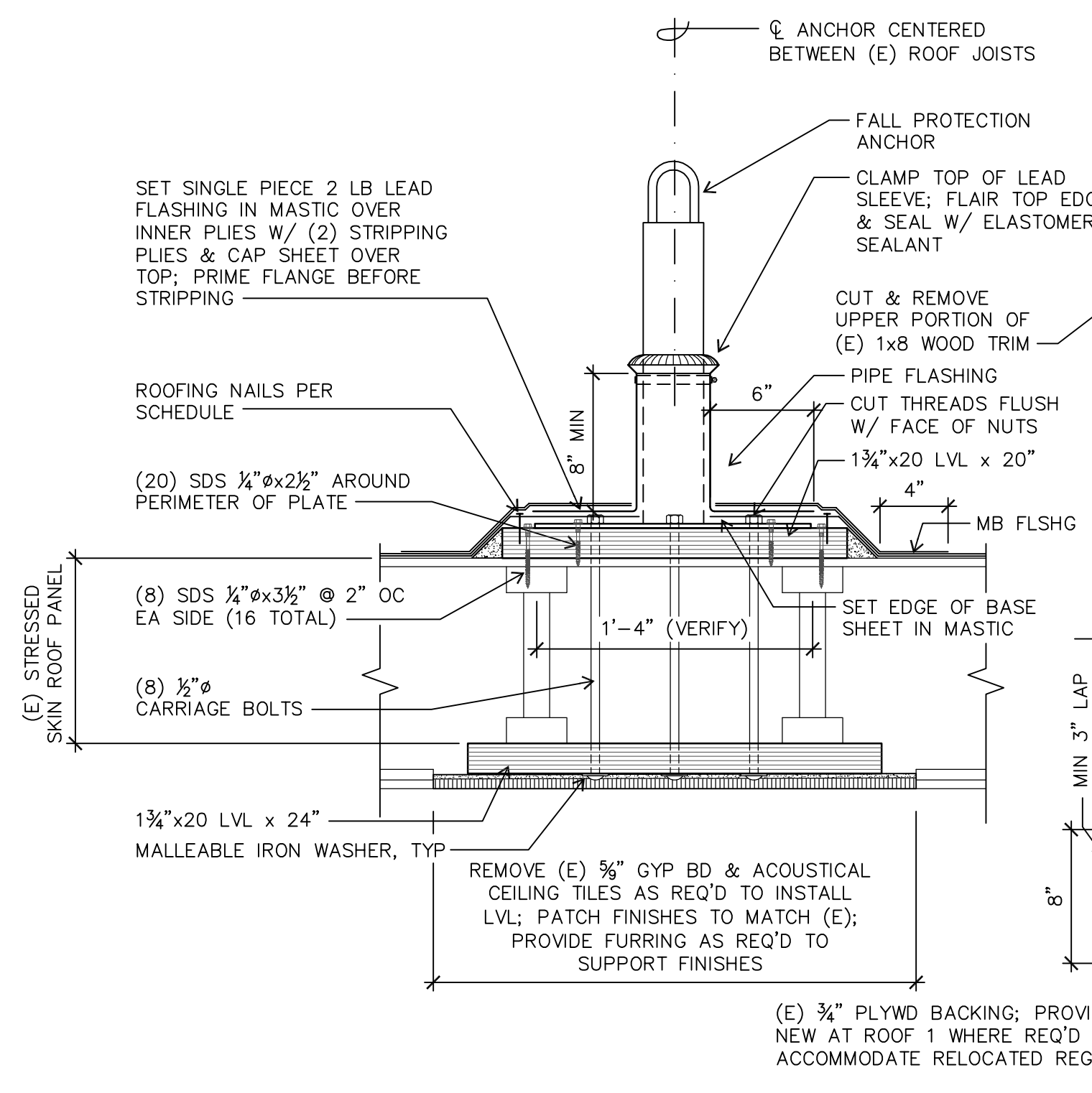
ISSUE DATE: 24 MAY 2017
ISSUE: CONSTRUCTION DRAWINGS
PROJECT NO: 1707
DRAWN BY: BDH
CHECKED BY: JMR
© ROBERTSON/SHERWOOD ARCHITECTS PC 2017 ORIGINAL SHEET SIZE: 24"X36"

KELLY MIDDLE SCHOOL
MECHANICAL ROOM PLAN,
MECHANICAL ROOM SECTION,
DETAILS

A-202



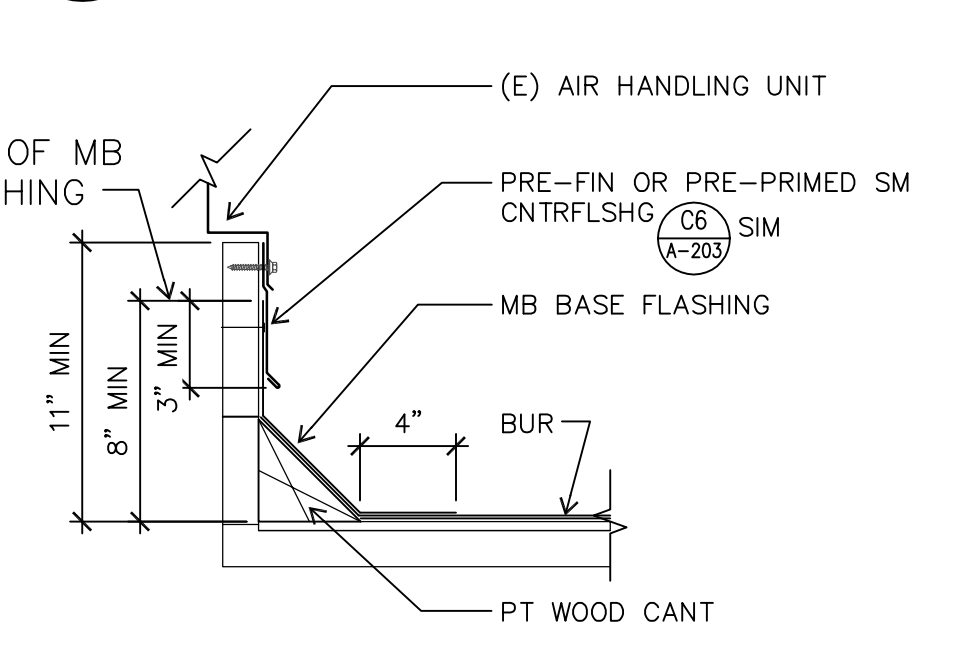
Robertson Sherwood Architects
 132 EAST BROADWAY, SUITE 540
 EUGENE, OREGON 97401
 541-342-8077
 www.robertsonsherwood.com



E5 ROOF EDGE AT INSUL
 A-203 1-1/2" = 1'-0"

E6 TYP ROOF EDGE
 A-203 1-1/2" = 1'-0"

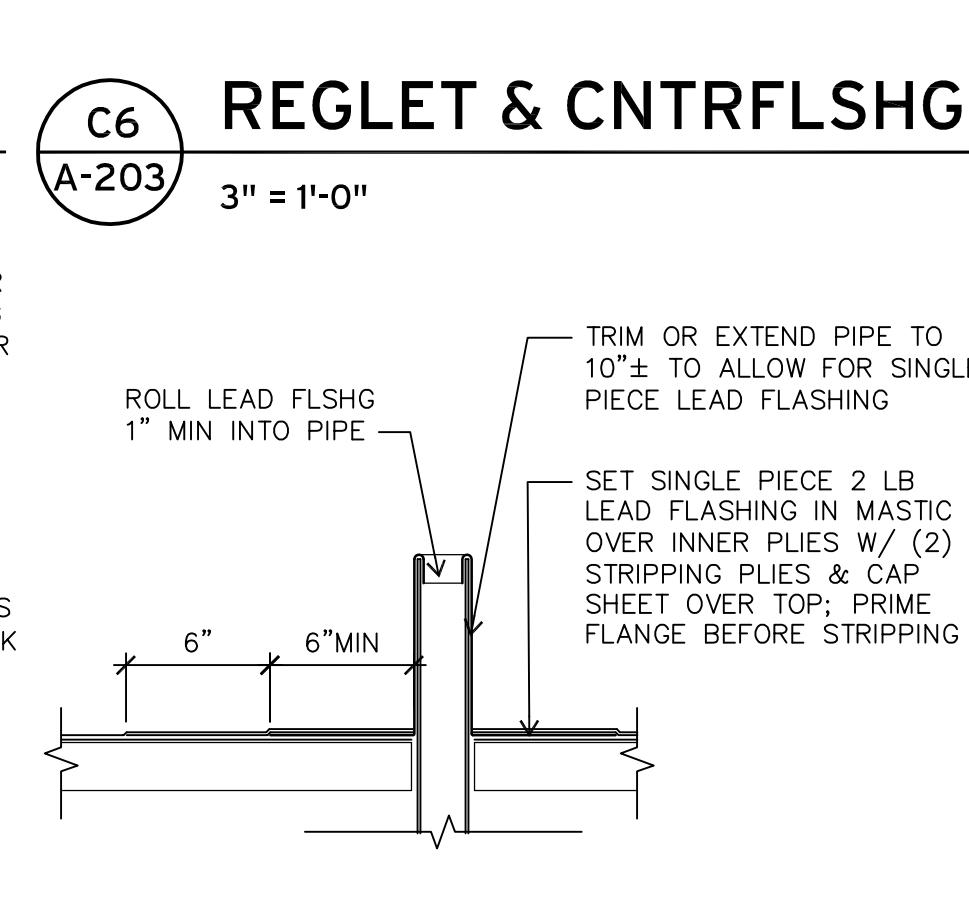
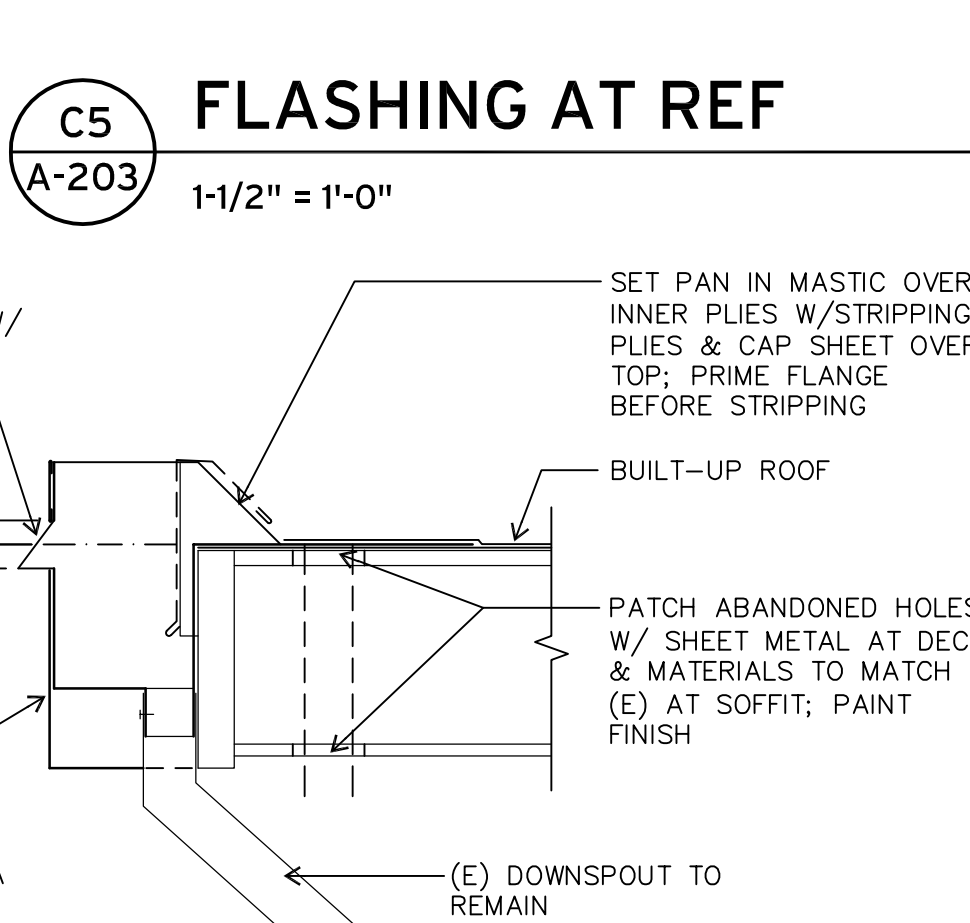
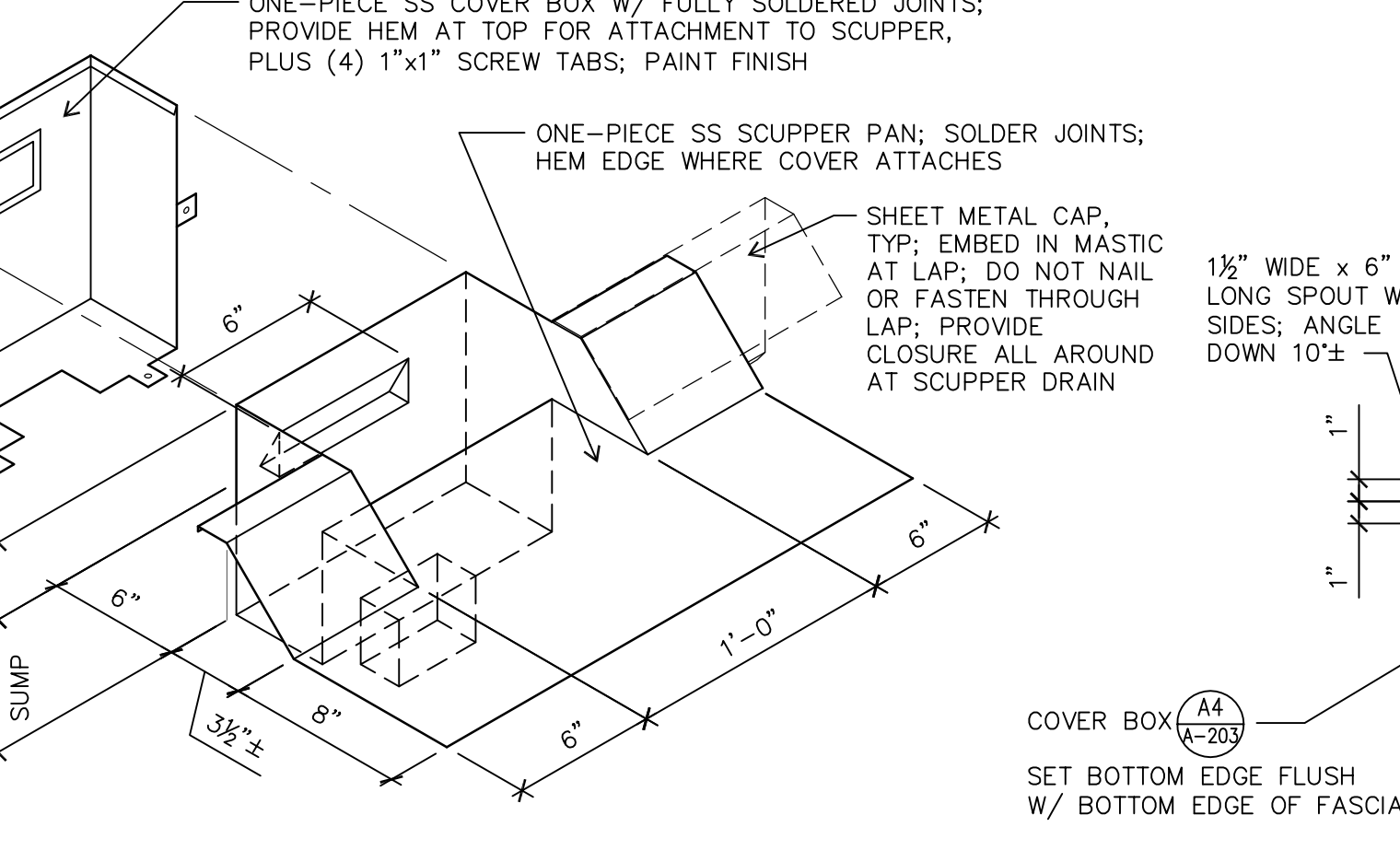
D3 FALL PROTECTION ANCHOR DETAIL
 A-203 1-1/2" = 1'-0"



D5 FLSHG AT WOOD WALL
 A-203 1-1/2" = 1'-0"

D6 FLASHING AT AIR VENTILATOR (AV)
 A-203 1-1/2" = 1'-0"

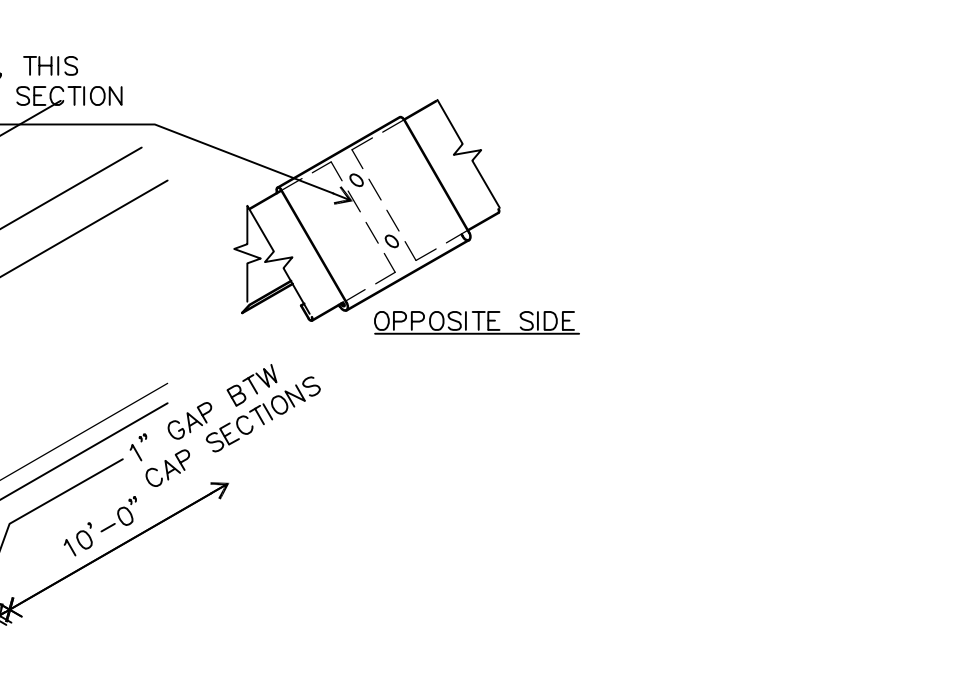
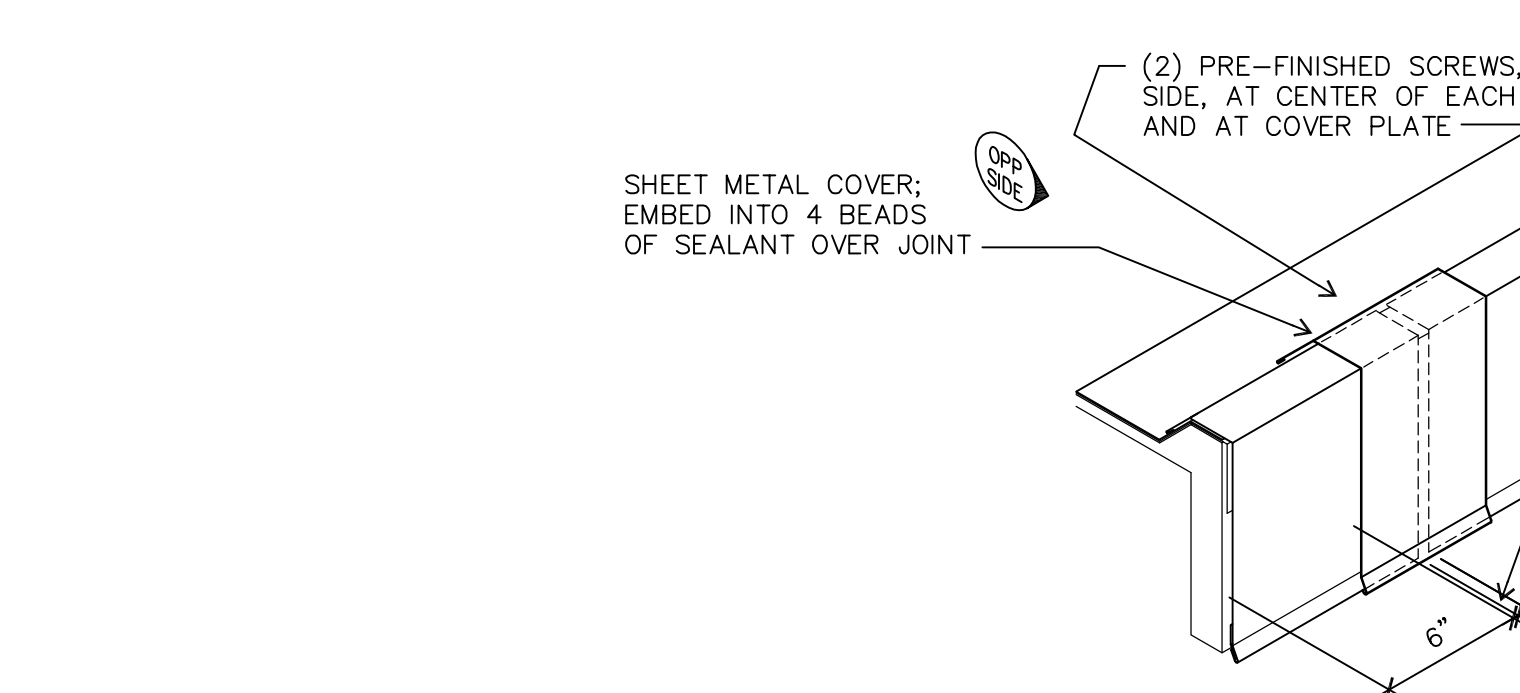
D6 FLASHING AT AIR VENTILATOR (AV)
 A-203 1-1/2" = 1'-0"



B3 ISOMETRIC - SCUPPER DRAIN & COVER BOX
 A-203 NOT TO SCALE

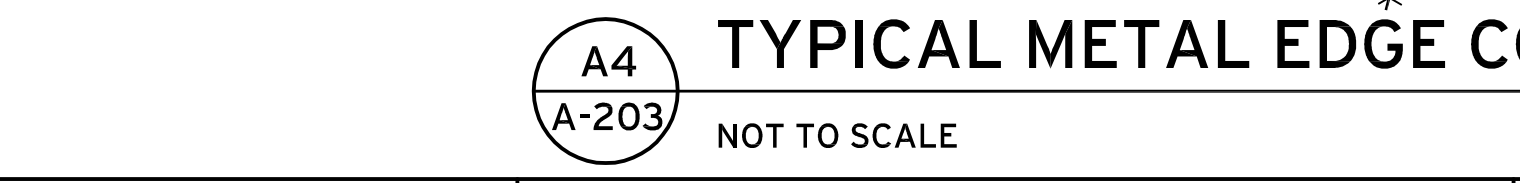
C5 FLASHING AT REF
 A-203 1-1/2" = 1'-0"

C6 REGLET & CNTRFLSHG
 A-203 3" = 1'-0"



B5 TYP SCUPPER DRAIN
 A-203 1-1/2" = 1'-0"

B6 PLUMBING VENT (PV)
 A-203 1-1/2" = 1'-0"



A4 TYPICAL METAL EDGE COVER PLATE
 A-203 NOT TO SCALE

A4 TYPICAL METAL EDGE COVER PLATE
 A-203 NOT TO SCALE

- GENERAL NOTES**
- SEE SHEET A-102 FOR TYPICAL ROOF ASSEMBLY.
 - PROVIDE PRE-FINISHED SHEET METAL FOR EXPOSED METAL FLASHING UNLESS OTHERWISE NOTED.
 - PROVIDE PRE-FINISHED FASTENERS TO MATCH COLOR OF SHEET METAL WHERE FASTENERS ARE EXPOSED.

RE-BID

MULTISITE ROOFING 2017
 Kelly Middle School
 850 Howard Ave, Eugene, OR
 Edgewood Elementary School
 577 E. 46th Ave, Eugene, OR

MARK	DATE	DESCRIPTION

ISSUE DATE: 24 MAY 2017
 ISSUE: CONSTRUCTION DRAWINGS
 PROJECT NO: 1707
 DRAWN BY: BDH
 CHECKED BY: JMR

EDGWOOD ELEMENTARY SCHOOL
 ROOF DETAILS

A-203