



Fox Hollow Painting 2016
Eugene Public School District 4J
Eugene, Oregon

CIP # 420.780.724

ADDENDUM NUMBER ONE

July 20, 2016

This addendum is issued to clarify, change, and correct the Request for Quotation and Contract Documents and shall form a part of the Contract. Acknowledge receipt of this Addendum in the space provided on the Quotation Form. Failure to do so may subject the Quoter to disqualification.

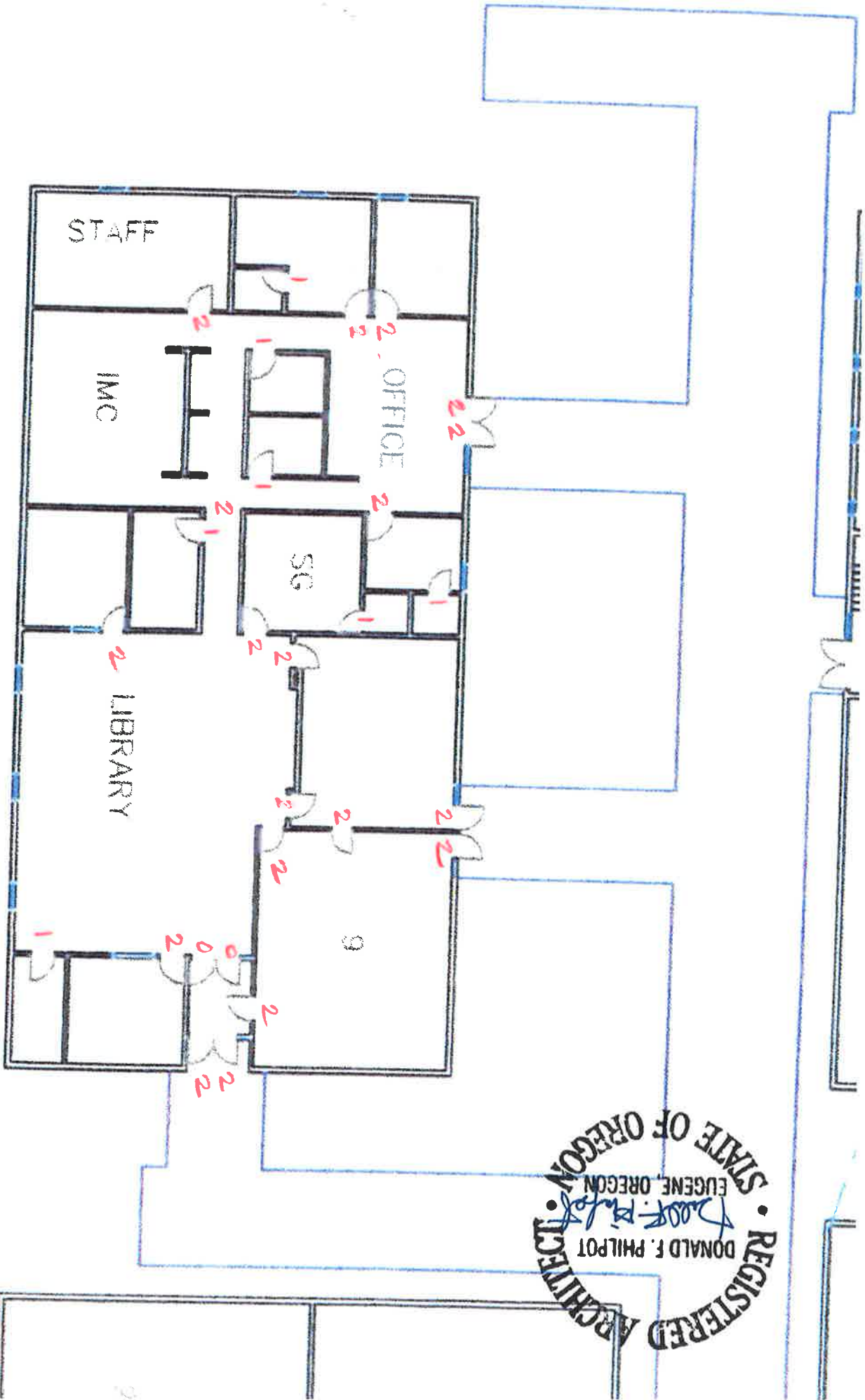
CLARIFICATION:

1. Attached are plans inventorying doors and frames to be painted.
Notations:
0 = Paint neither side of door, but paint the frames when frames are part of wall to be painted.
1 = Paint one side of door and frame.
2 = Paint both sides of door and frame.

2. Drawings Sheet 00: SCOPE OF WORK – No. 5
All surfaces to receive full oil prime coat with two coats of finish paint. The only exceptions are the surfaces to receive the pre-catalyzed epoxy paint as described on Sheet 1 Item 10 of the Color Schedule (and Picture Legend). Those surfaces don't need an oil prime coat, just knock down the glaze and install the two coats of pre-cat epoxy paint.

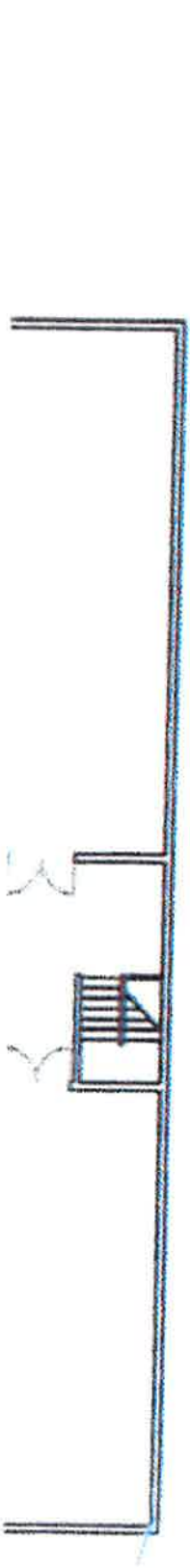
Donald F. Philpot, AIA
Attachments

END OF ADDENDUM NUMBER ONE

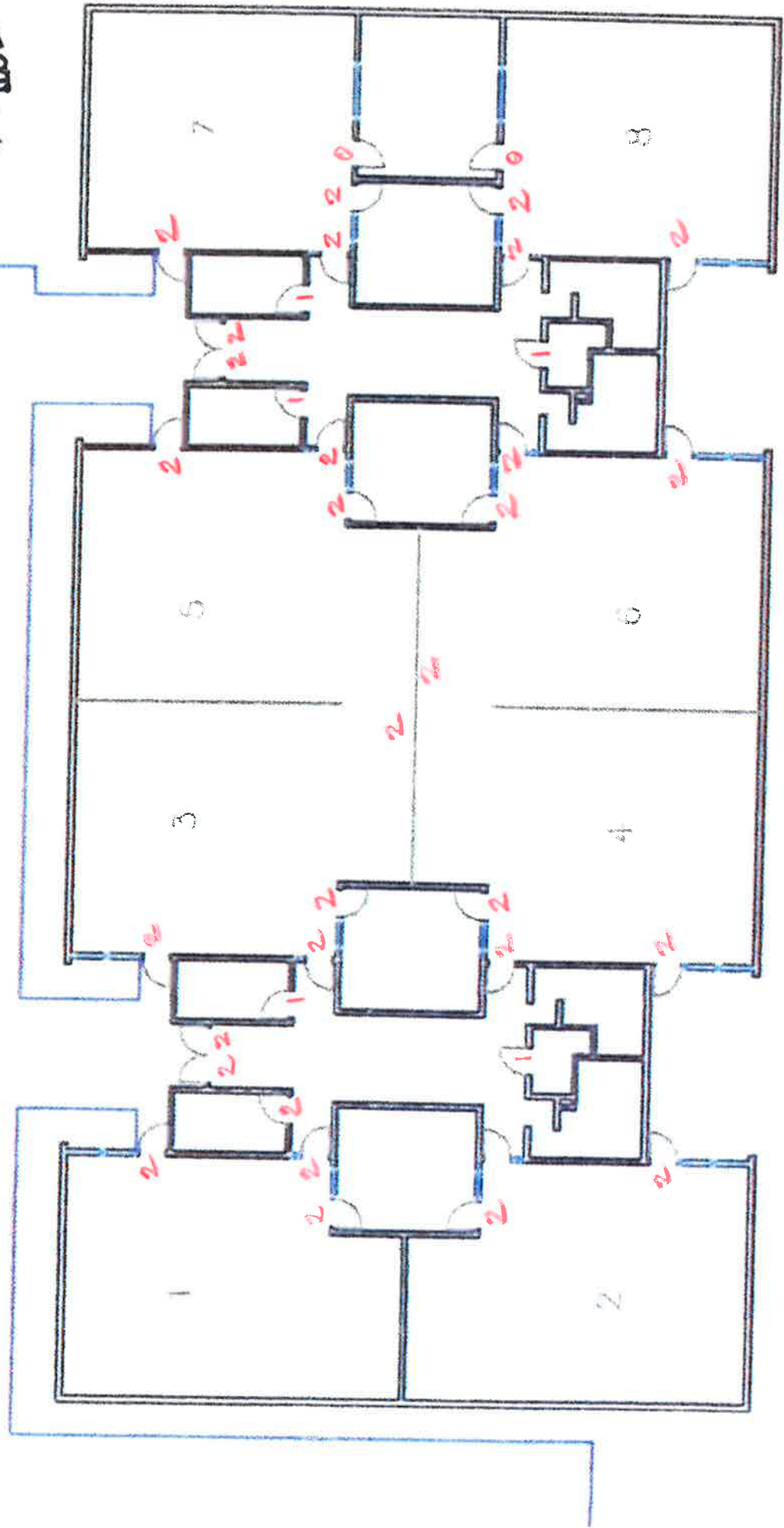


REGISTERED ARCHITECT
 DONALD F. PHILPOT
 Eugene, Oregon
 STATE OF OREGON

1075



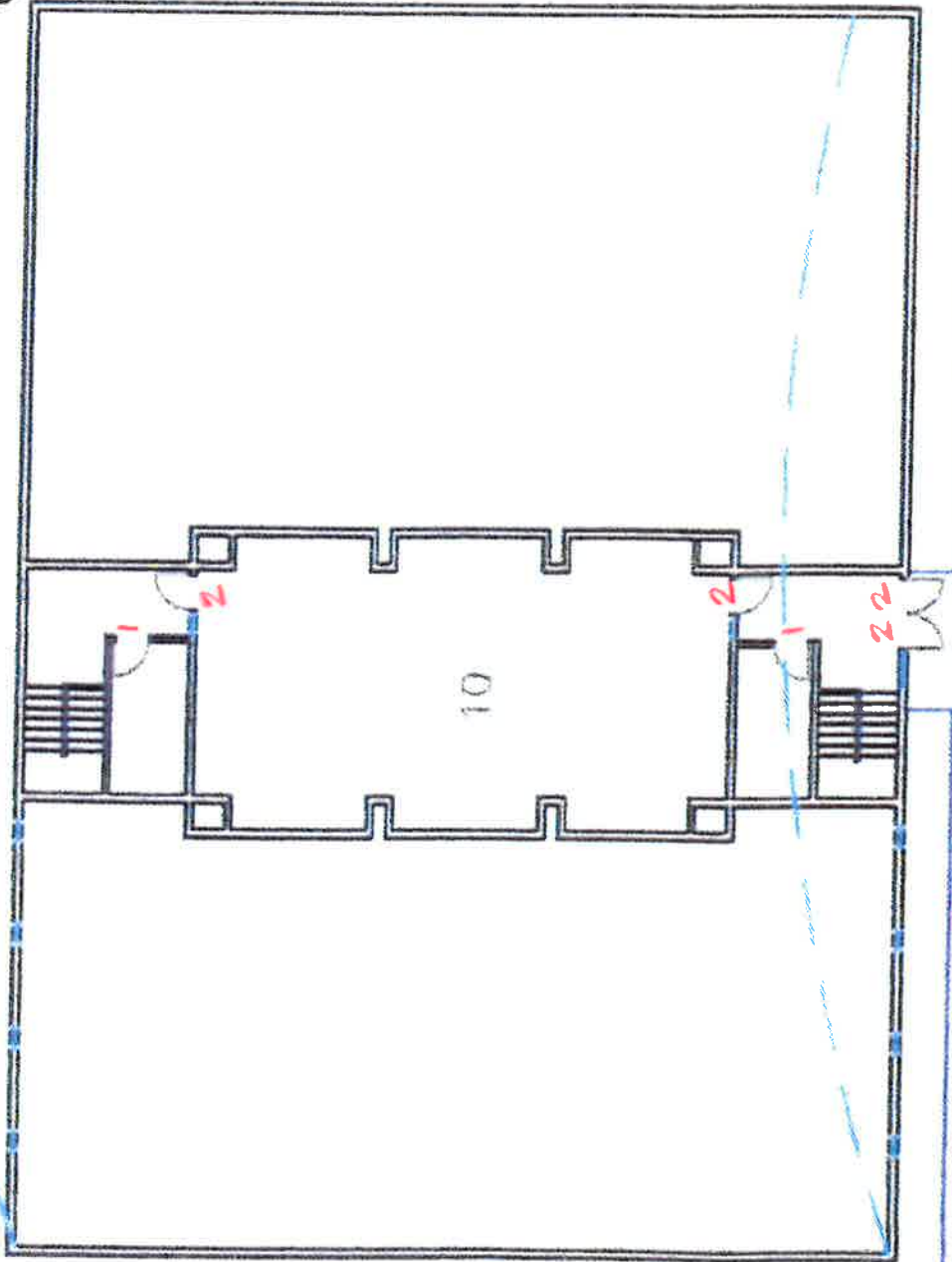
LOWER LEVEL



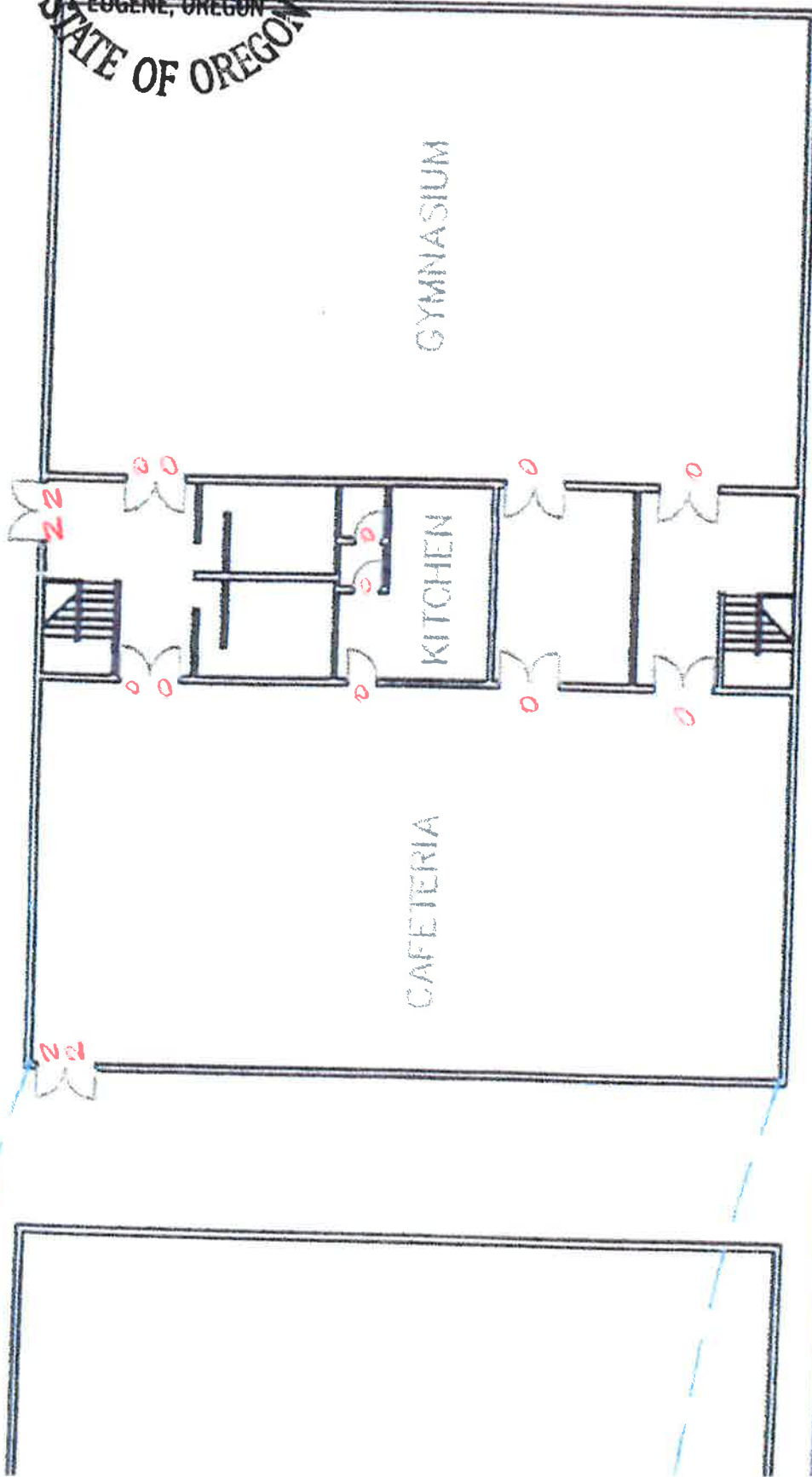
REGISTERED ARCHITECT
DONALD F. PHILPOT
Donald F. Philpot
EUGENE, OREGON
STATE OF OREGON

CAPET

3 of 5

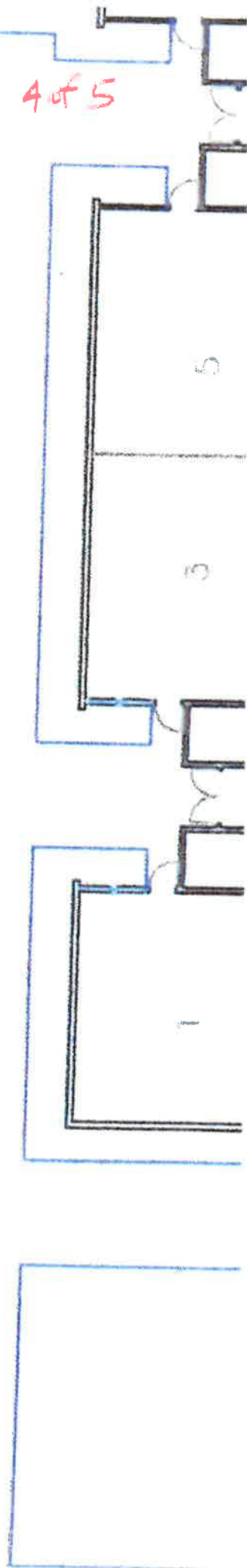


REGISTERED ARCHITECT
DONALD F. PHILPOT
Donald F. Philpot
EUGENE, OREGON
STATE OF OREGON



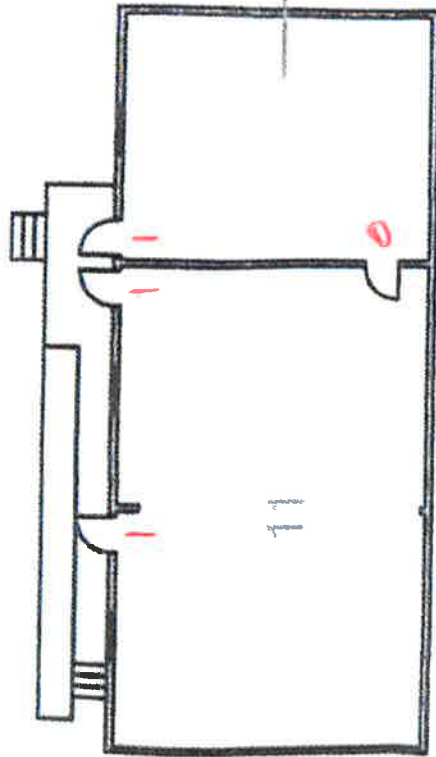
LOWER LEVEL

4 of 5





TECHNOLOGY



PORTABLE BLDG.