

NEW WHEELCHAIR LIFT - 2016

EUGENE SCHOOL DISTRICT 4J
 TWIN OAKS ELEMENTARY SCHOOL
 EUGENE OREGON

CIP: #420.343.100

gLas
 Architects, LLC

115 W. 8th, Suite 285
 Eugene, Oregon 97401

(541) 686-2014
 www.glas-arch.com



CONSULTANTS

NEW WHEELCHAIR LIFT - 2016
 EUGENE SCHOOL DISTRICT 4J
 TWIN OAKS ELEMENTARY SCHOOL
 Eugene, Oregon

gLas
 Architects, LLC COPYRIGHT 2016

REVISION

COVER SHEET
 VICINITY MAP
 DRAWING INDEX

| | |
|----------------------|-----------------|
| PROJECT NO. 15028 | DATE 2/11/16 |
|----------------------|-----------------|

A0

CODE INFORMATION

Twin Oaks Elementary School
 85916 Bailey Hill Rd.
 Map: 18-04-21-00-00300

E Occupancy
 Construction Type V-B Non-sprinklered

DRAWING INDEX

A0 COVER SHEET, DRAWING INDEX,
 PROJECT DATA, VICINITY MAP

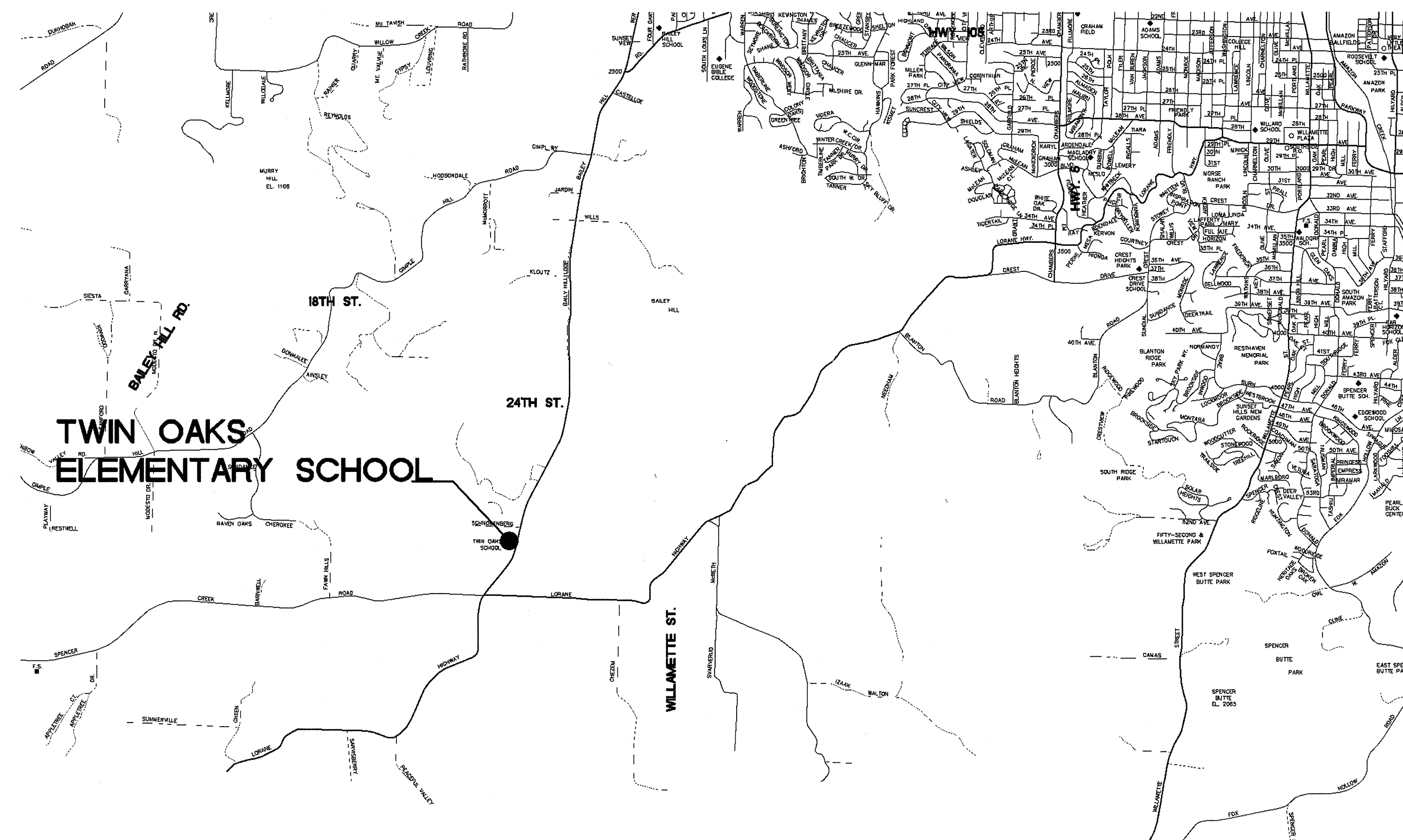
ARCHITECTURAL DRAWINGS

A1 TWIN OAKS ELEMENTARY
 FLOOR PLANS
 INTERIOR ELEVATIONS

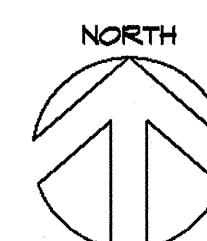
A3 DETAILS, SCHEDULES

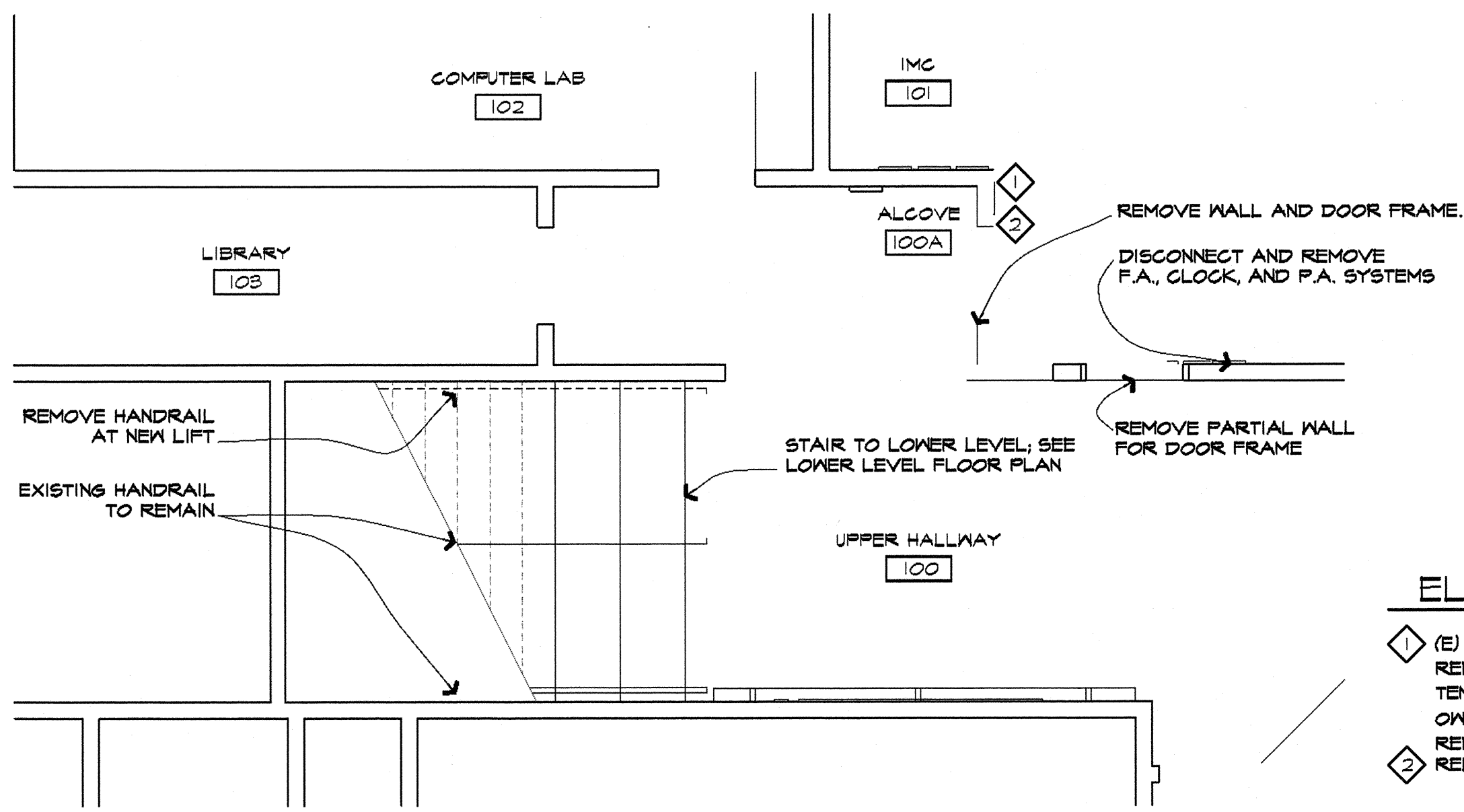
SYMBOLS

- DRAWING LETTER
DETAIL MARK
DETAIL NO.
- DRAWING LETTER
INTERIOR ELEVATION MARK
SHEET NO.
- DRAWING LETTER
BUILDING SECTION CALLOUT
SHEET NO.
- ROOM
ROOM NAME
ROOM IDENTIFICATION NO.
- DOOR LETTER
DOOR MARK
ROOM NO.
- RELIGHT OR WINDOW TYPE
- KEYED NOTE
- ELEVATION CALLOUT
- REVISION CLOUD
WITH KEYED NOTE



VICINITY MAP
 SCALE: NO SCALE

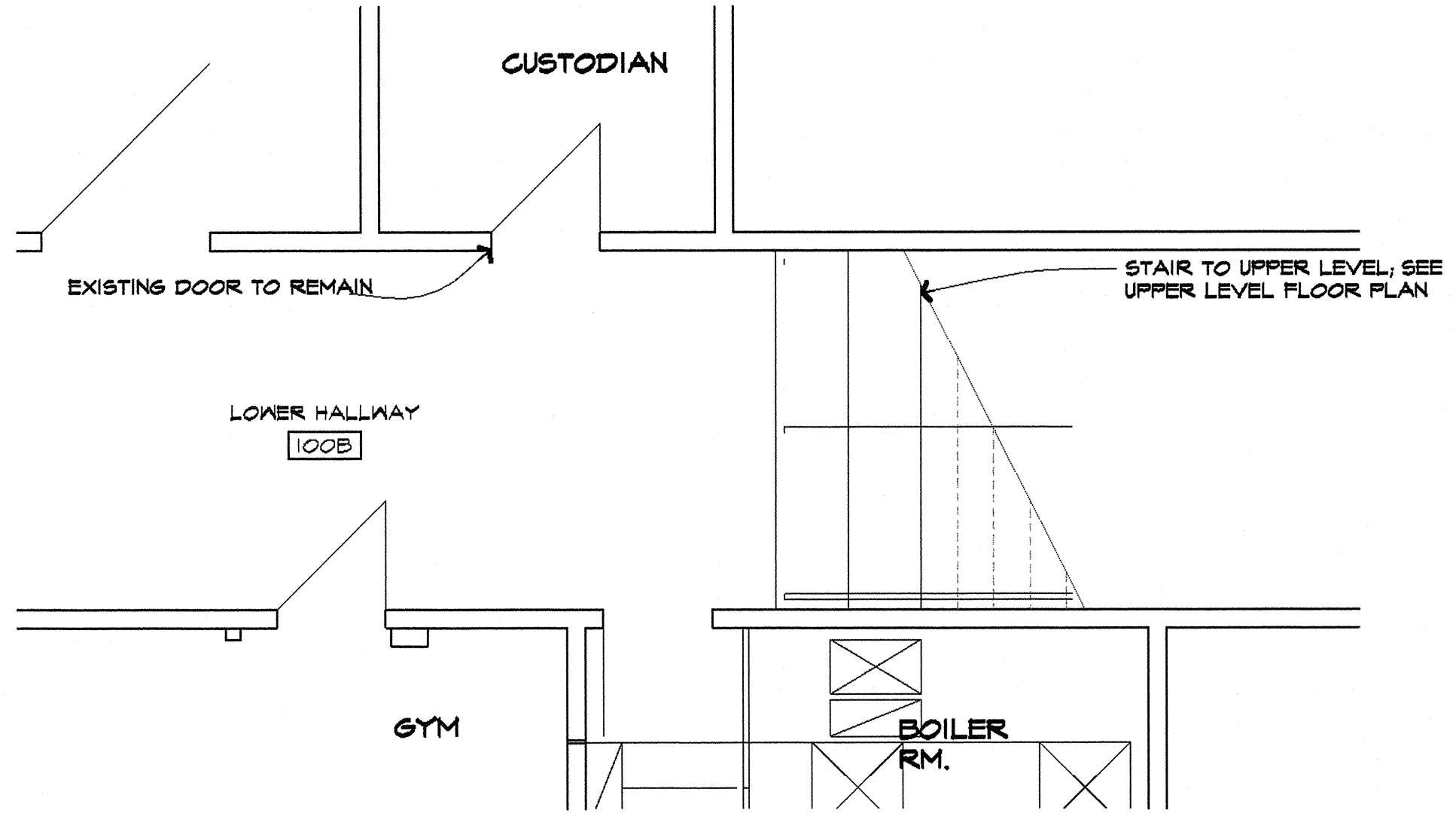
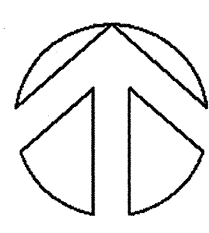




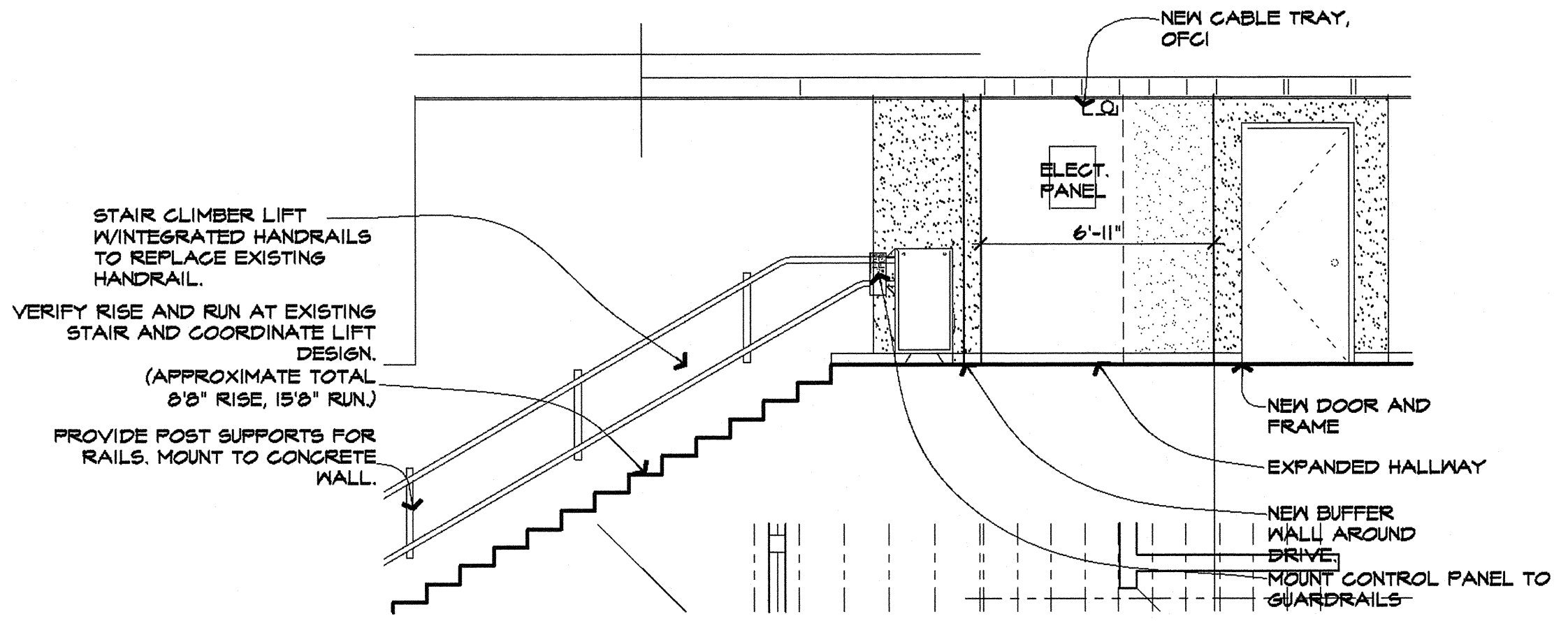
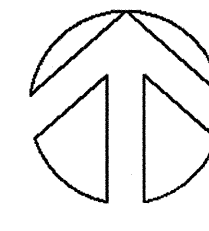
ELECTRICAL NOTES

- ① (E) SECURITY PANEL TO BE REMOVED FROM WALL AND TEMPORARILY SUSPENDED BY OWNER. (E) WIRING IN WALL TO REMAIN.
- ② RELOCATE (E) SWITCHES.

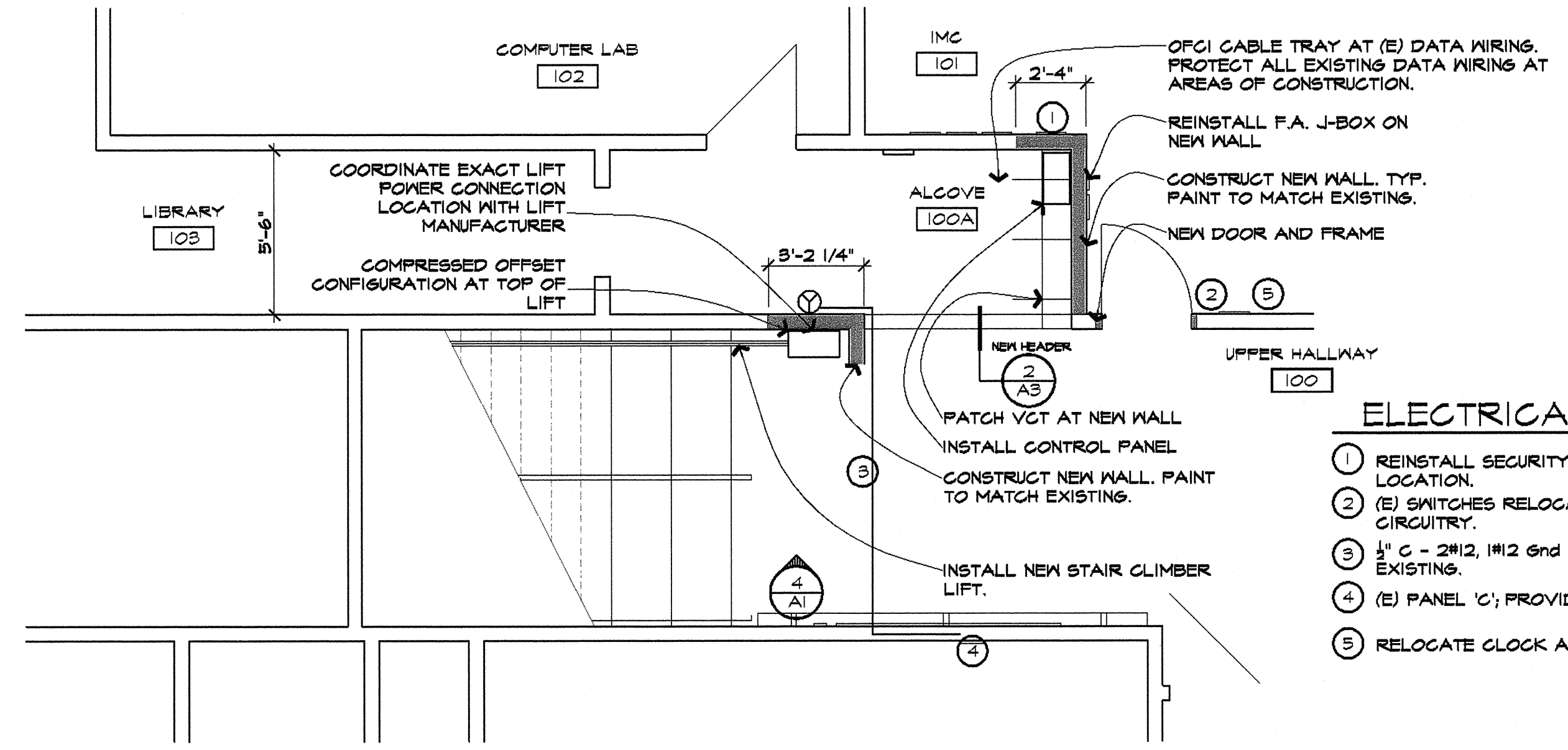
1 AI PARTIAL UPPER FLOOR PLAN - DEMO - TWIN OAKS
SCALE: 1/4" = 1'-0"



3 AI PARTIAL LOWER FLOOR PLAN - DEMO - TWIN OAKS
SCALE: 1/4" = 1'-0"



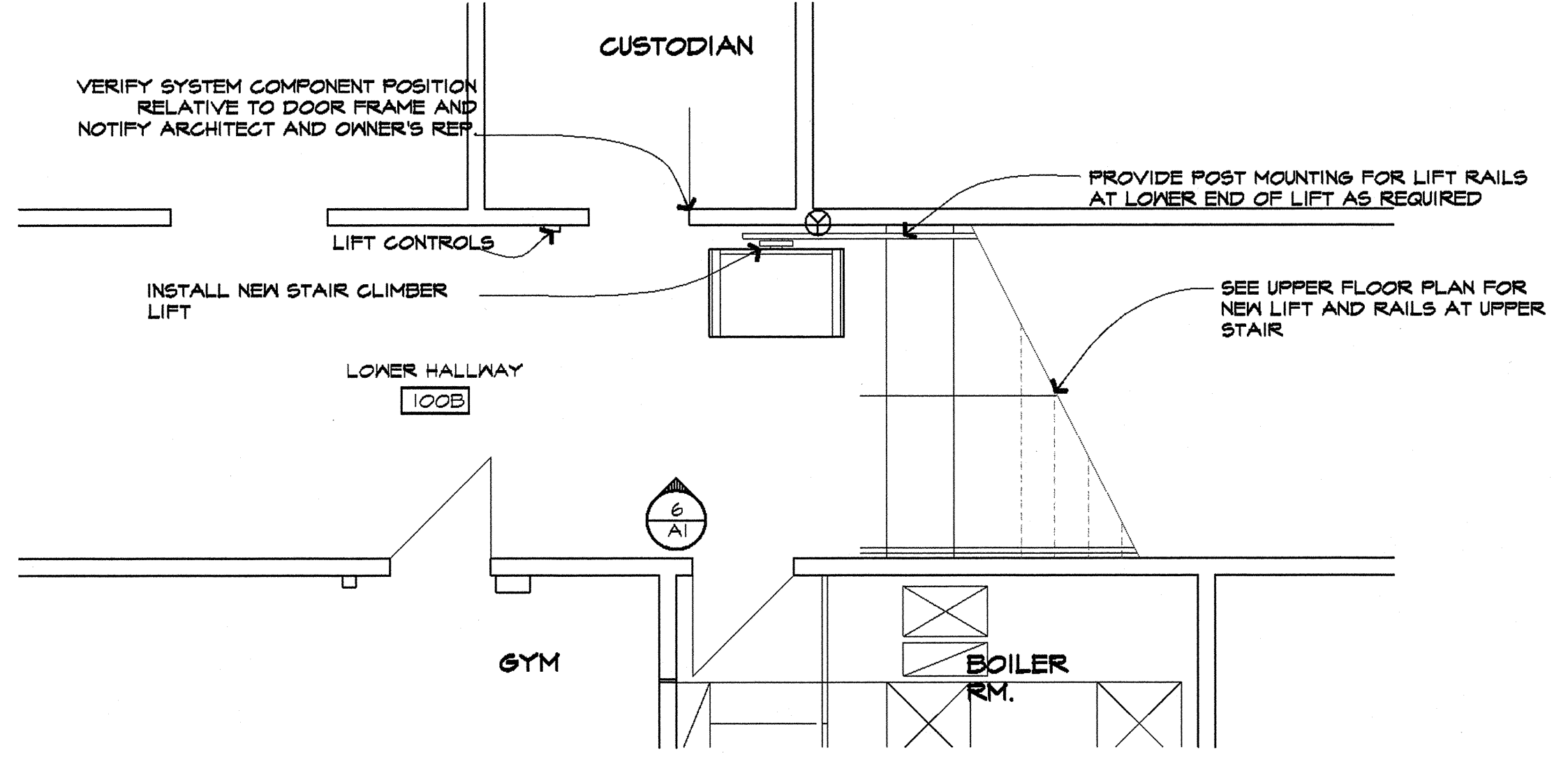
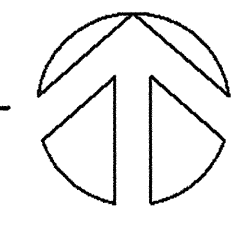
5 AI WALL ELEVATION AT UPPER STAIR/CHAIR LIFT
SCALE: 1/4" = 1'-0"



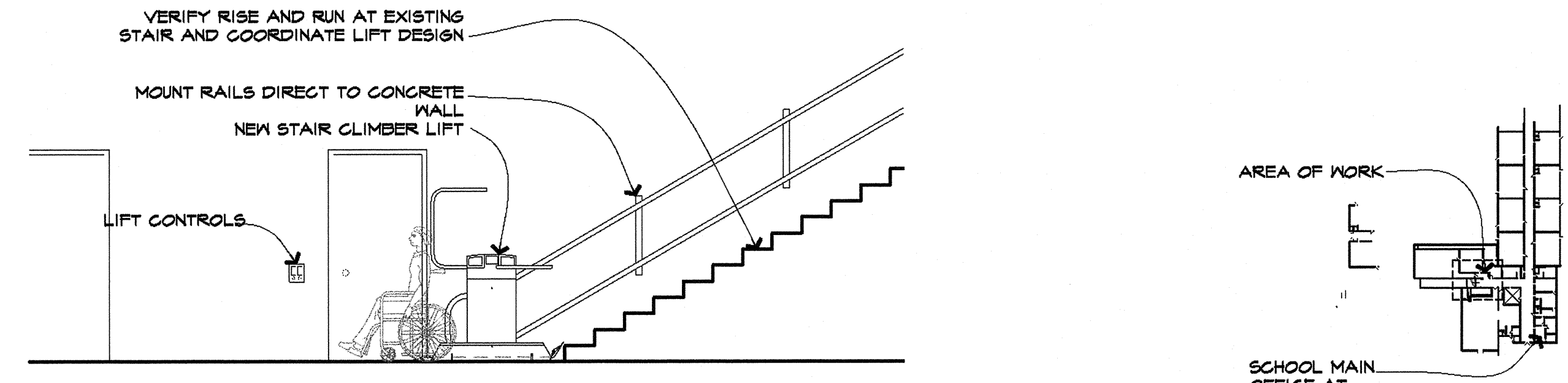
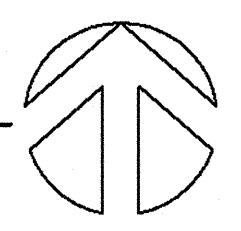
ELECTRICAL NOTES

- ① REINSTALL SECURITY PANEL IN ORIGINAL LOCATION.
- ② (E) SWITCHES RELOCATED. RECONNECT TO (E) CIRCUITRY.
- ③ 1/2" C - 2#12, 1#12 6nd EXPOSED. PAINT TO MATCH EXISTING.
- ④ (E) PANEL 'C'; PROVIDE NEW 20/2.
- ⑤ RELOCATE CLOCK AND INTERCOM SPEAKER.

2 AI PARTIAL UPPER FLOOR PLAN - NEW - TWIN OAKS
SCALE: 1/4" = 1'-0"

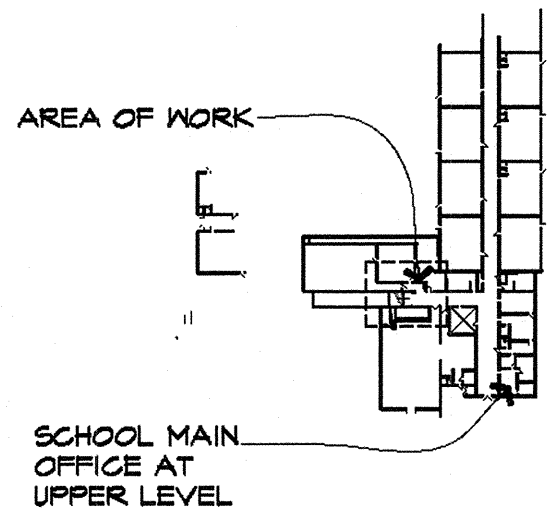


4 AI PARTIAL LOWER FLOOR PLAN - NEW - TWIN OAKS
SCALE: 1/4" = 1'-0"



6 AI WALL ELEVATION AT LOWER STAIR/CHAIR LIFT
SCALE: 1/4" = 1'-0"

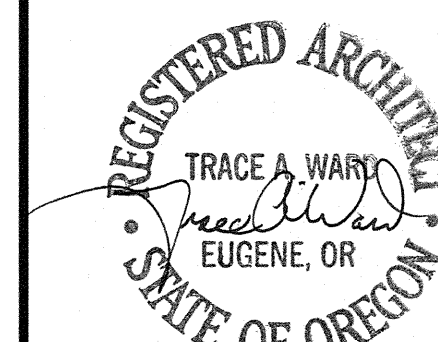
AI KEY PLAN
SCALE: NONE



| | |
|---|---------|
| △ | REVISED |
| | |
| | |
| | |
| | |

PLANS
WALL ELEVATIONS

| | |
|----------------------|-----------------|
| PROJECT NO. 15028 | DATE 2/11/16 |
|----------------------|-----------------|



CONSULTANTS

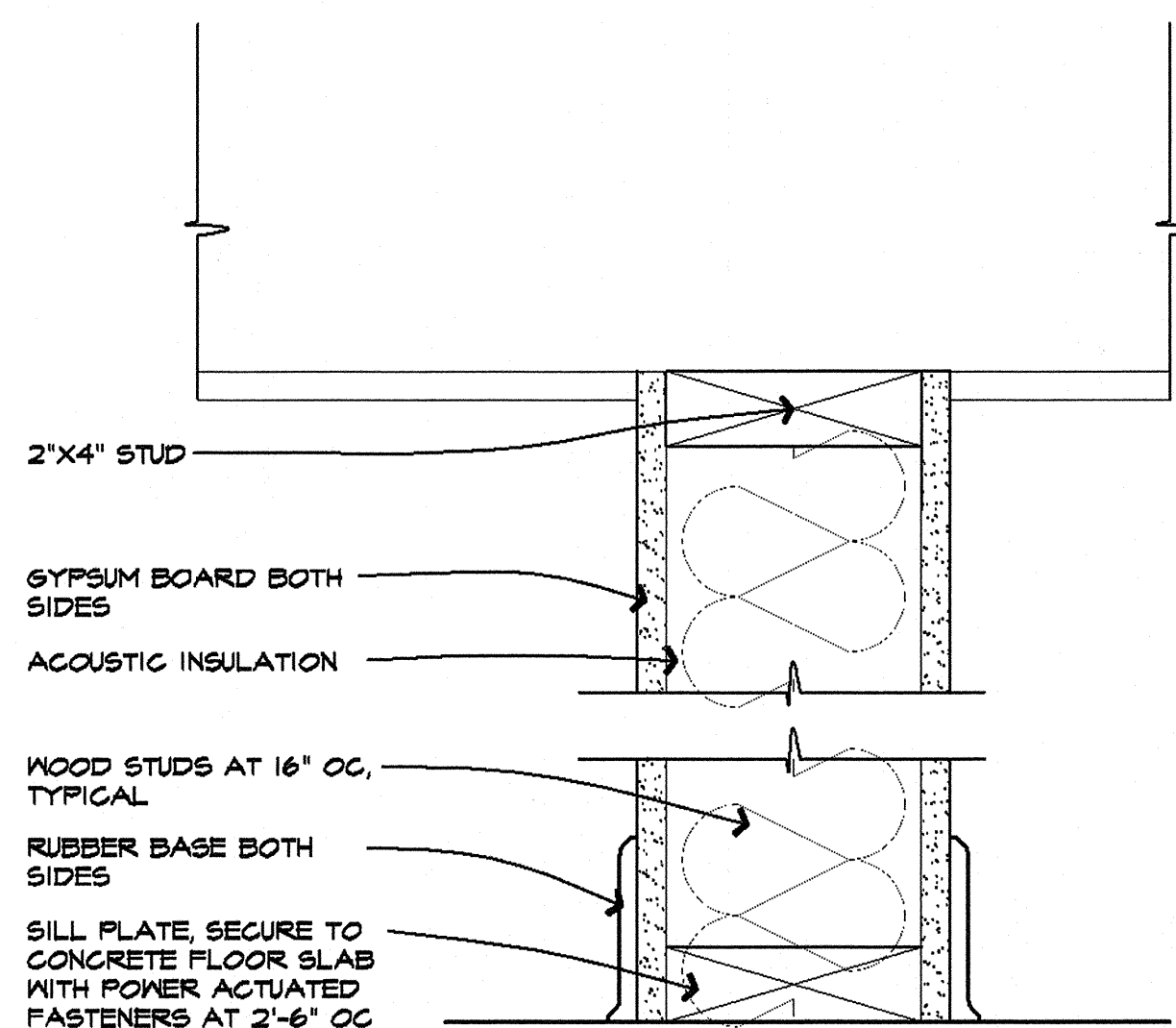
NEW WHEELCHAIR LIFT - 2016
EUGENE SCHOOL DISTRICT 4J
TWIN OAKS ELEMENTARY SCHOOL
Eugene, Oregon

REVIS

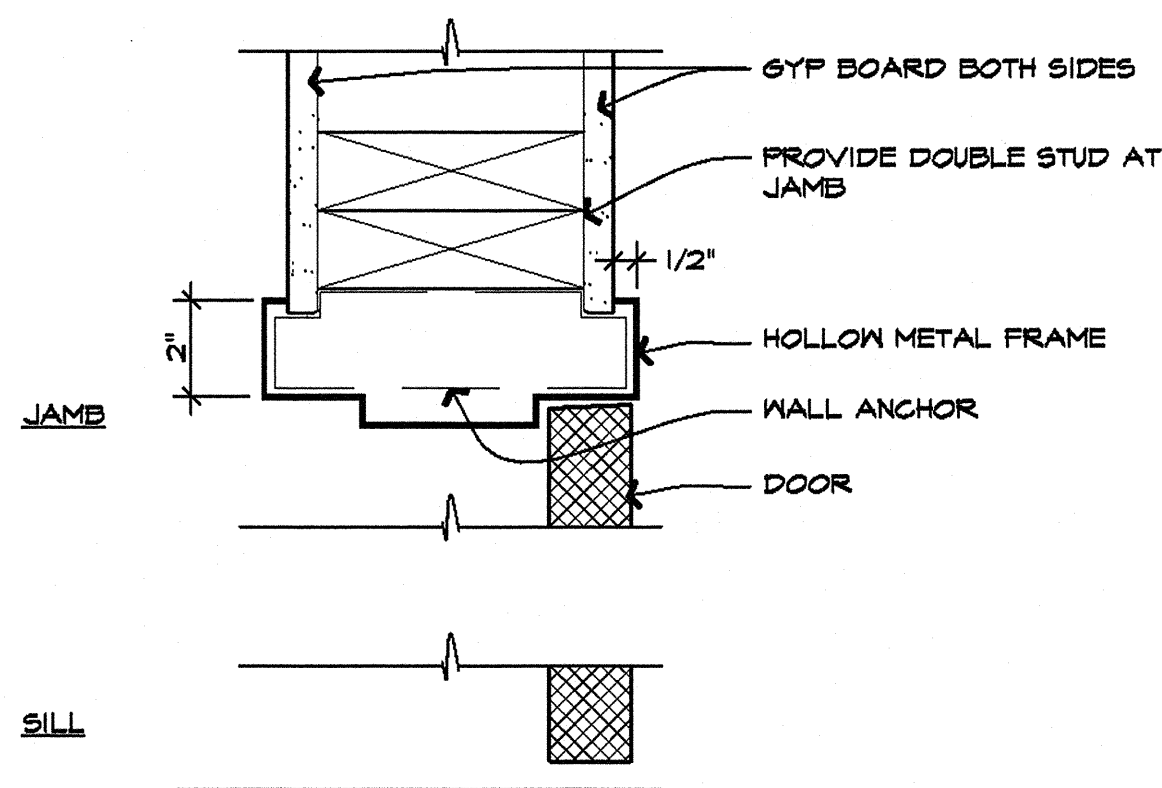
SCHEDULES
DETAILS

PROJECT NO. 15028
DATE 2/2/16

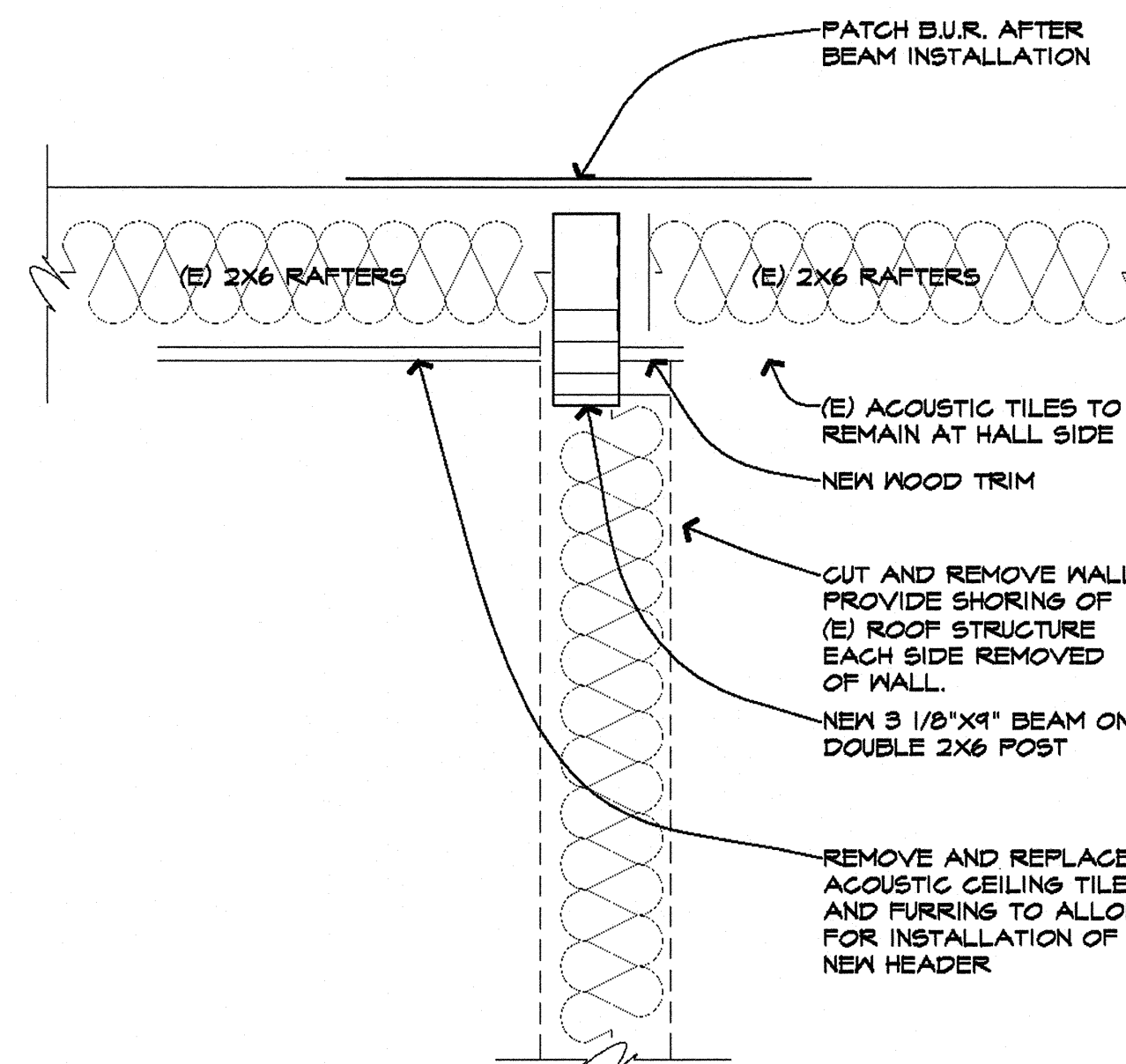
A3



1 TYPICAL INTERIOR WALL
SCALE: 3/8" = 1'-0"



2 INTERIOR DOOR AT NEW WALL
SCALE: 3/8" = 1'-0"



2 HEADER
SCALE: 1/2" = 1'-0"

| ROOM FINISH SCHEDULE | | | | | | | | | | | | | | | | | |
|----------------------|---------------|------------|--------|-----------|--------|-----------------|--------|----------------|--------|-----------------|--------|----------------|--------|--------------|--------|--------|-----------|
| Room No. | Room Name | Floor Mat. | Finish | Base Mat. | Finish | North Wall Mat. | Finish | East Wall Mat. | Finish | South Wall Mat. | Finish | West Wall Mat. | Finish | Ceiling Mat. | Finish | Height | Ref. Note |
| 100 | UPPER HALLWAY | (E) | - | RB | FACT. | GB | 1 4.2B | (E) | 1 4.2B | GB | 1 4.2B | (E) | 1 4.2B | (E) | 1 4.2B | - | 1,2 |
| 100A | ALCOVE | (E) | VCT | RB | FACT. | (E) | 1 4.2B | (E) | 1 4.2B | GB | 1 4.2B | (E) | 1 4.2B | (E) | 1 4.2B | - | 1,2 |
| 100B | LOWER HALLWAY | (E) | - | RB | FACT. | GB | 1 4.2B | (E) | 1 4.2B | GB | 1 4.2B | (E) | 1 4.2B | (E) | 1 4.2B | - | 1,2 |
| 101 | IMC | (E) | - | RB | FACT. | GB | 1 4.2B | (E) | 1 4.2B | GB | 1 4.2B | (E) | 1 4.2B | (E) | 1 4.2B | - | 1,2 |

GLAZ - GLASS GLAZING
GB - GYPSUM BOARD
I-X-XX - PAINT SYSTEM 'X'
PL - PLASTER
RB - RUBBER, RUBBER BASE
SAP - SUSPENDED ACOUSTIC PANEL
TME - TO MATCH EXISTING
BRK - BRICK
RSF - RESILIENT SHEET FLOORING

FACT. - FACTORY FINISH
CONC. - CONCRETE
CPT. - CARPET
(E) - EXISTING

GENERAL NOTES:
1. PATCH WALLS AS REQUIRED TO MATCH EXISTING, ADJACENT SURFACES. FINISH TO CREATE SEAMLESS TRANSITION BETWEEN NEW WORK AND EXISTING TO REMAIN.
2. PAINT WALLS TO NEXT EVEN BREAK.

DOOR HARDWARE GROUP 1

| | | | | |
|-----|---|-----|----------------------------|--------------------|
| MCK | 3 | EA | BUTTS TA2714 4.5 X 4.5 NRP | 652 |
| SCH | 1 | EA | LOCKSET L9070BD 06RHO | 626 REUSE EXISTING |
| | 1 | EA | 1/2 MORTISE CYLINDER | 626 |
| | 1 | EA | INTERCHANGEABLE CORE | 626 |
| IVE | 1 | EA | WALL STOP 4075 | 630 |
| STE | 1 | SET | SEALS PS074 | BLACK |

| DOOR AND FRAME SCHEDULE | | | | | | | | | | | | | | |
|-------------------------|---------------|------|------|-------|--------|------|---------|---------|------|------|------|-----------|-------------|---------|
| Door No. | Dimensions | Mat. | Type | Glaze | Finish | Mat. | Finish | DETAILS | | | | H/M Group | Fire Rating | Keynote |
| | | | | | | | | H | LJ | RJ | S | | | |
| A-101 | 3'-0" x 7'-0" | WD | A | N | FACT. | HM | INTS,IR | 2/AS | 2/AS | 2/AS | 2/AS | 2 | 1 | |

FACT. - FACTORY FINISH

LEGEND:
WD - WOOD
HM - HOLLOW METAL
INTS,BB - MPI PAINT SYSTEM

GENERAL NOTES:
1. VIEW DOORS SO THAT THEY SWING AWAY WITH HINGES ON RIGHT OR LEFT SIDE. 'S' INDICATES A SIMILAR DETAIL.
2. COORDINATE KEYING WITH OWNER.

KEY NOTES:
1.

DOOR TYPES 1/4" = 1'-0" FRAME TYPES 1/4" = 1'-0"

SEE SCHEDULE

SEE SCHEDULE