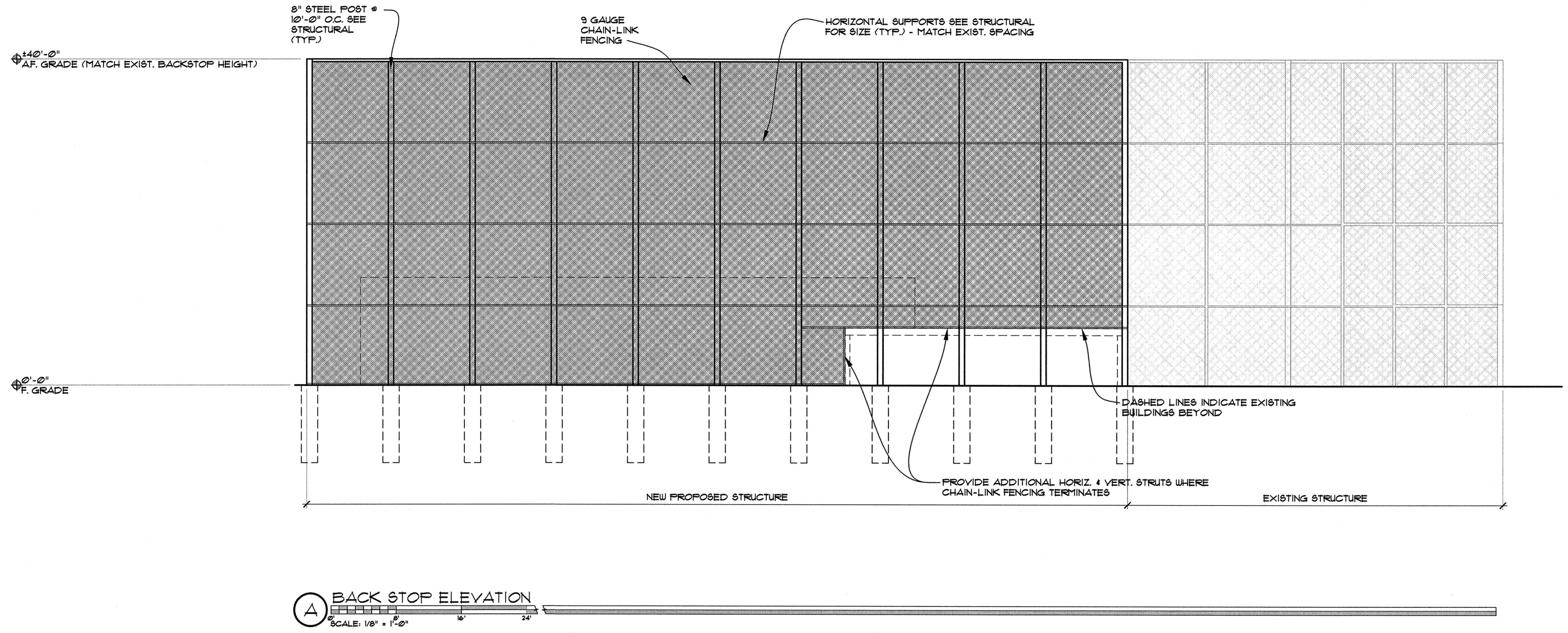
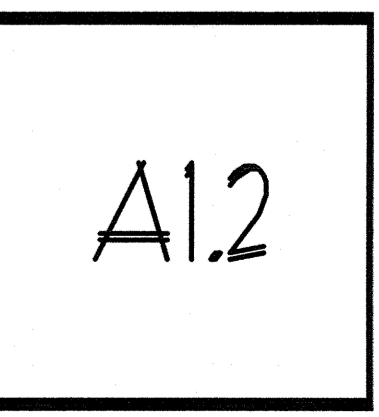


THE DOCUMENT AND THE IDEAS AND DESIGNS INCORPORATED HEREIN ARE THE PROPERTY OF RODD HANSEN ARCHITECT, L.L.C. AND IS NOT TO BE USED, IN WHOLE OR PART, FOR ANY OTHER PROJECT WITHOUT THE WRITTEN AUTHORIZATION OF RODD HANSEN ARCHITECT, L.L.C.

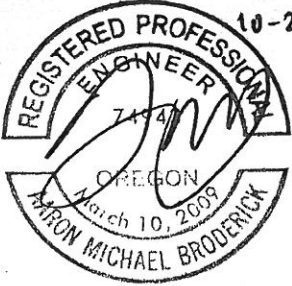
RODD HANSEN ARCHITECT, L.L.C.
 1951 Oak Street Suite A
 Eugene, Oregon 97401
 Phone: (541)-681-1800
 Fax: (541)-681-1200
 E-Mail: rodd@harchitectural.com

BACK STOP EXTENSION
 SHELDON HIGH SCHOOL
 2455 WILLAKENZIE ROAD EUGENE OR
 97401-4898

ARCHITECTURAL
 TITLE: SITE PLAN
 JOB#: 1165.11012014
 DRAWN BY: RH
 ISSUE DATE: 10-01-2015
 SCALE: 1/8" = 1'-0"

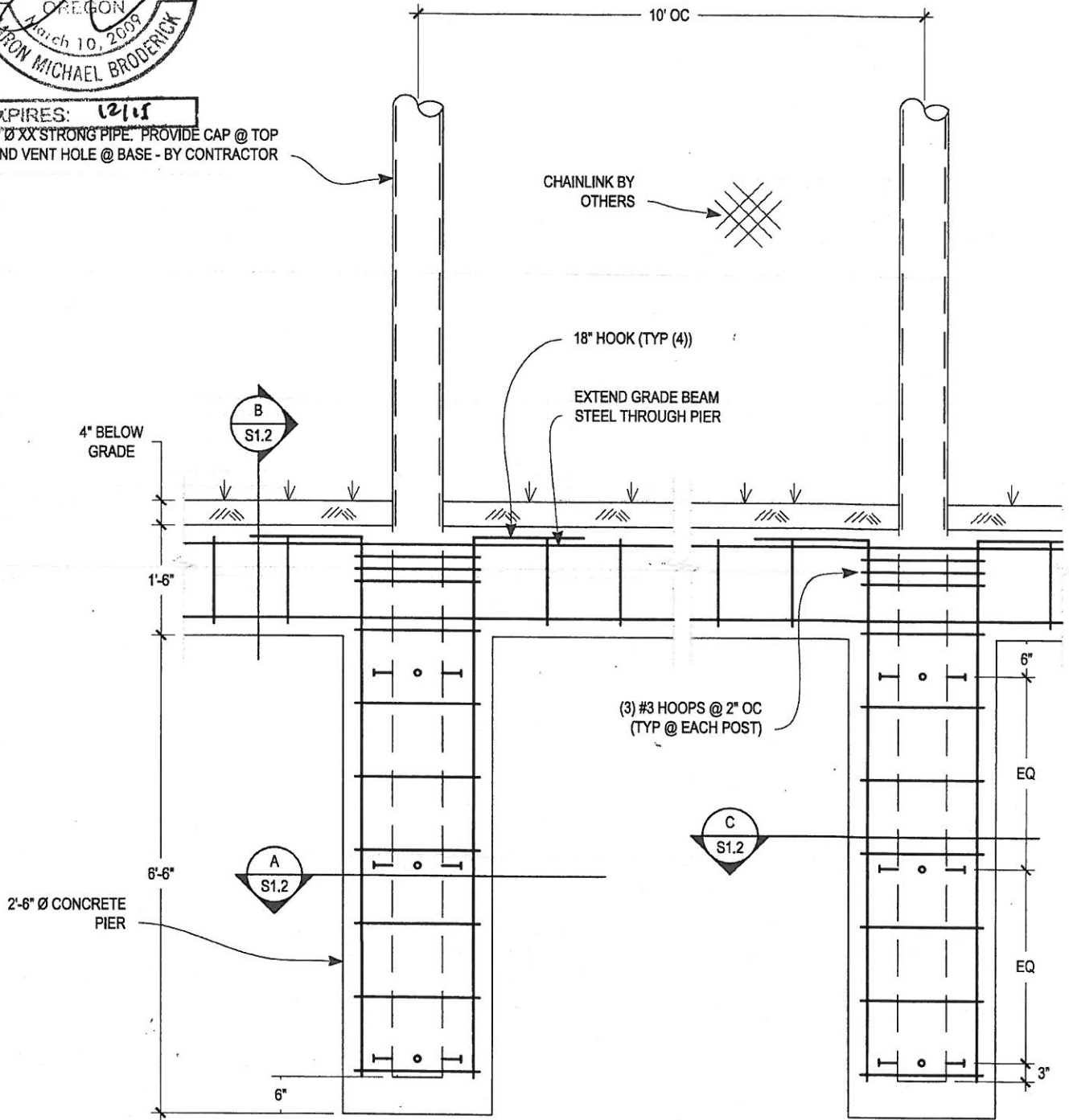


BACK STOP ELEVATION
 SCALE: 1/8" = 1'-0"



EXPIRES: 12/15

8" Ø XX STRONG PIPE. PROVIDE CAP @ TOP AND VENT HOLE @ BASE - BY CONTRACTOR



JBE JOHNSON BRODERICK ENGINEERING

Civil and Structural Engineers
 325 W. 13th Ave
 Eugene, Or 97401-3402
 www.jbe.us.com

Tel (541) 338-9488
 Fax (541) 338-9483

SHELDON BACKSTOP

Project:

Date: 10-01-2015
 Project No.: 15002.06
 Drawn By: FAD
 Checked By: AMB

Revisions:

Sheet title: BACKSTOP

Scale:

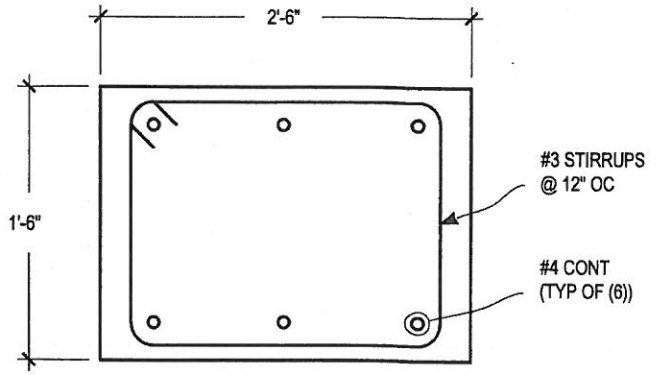
Sheet:

S1.0

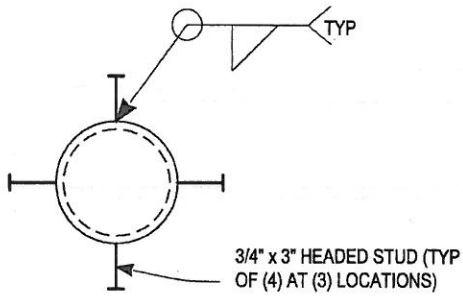


U-2-15

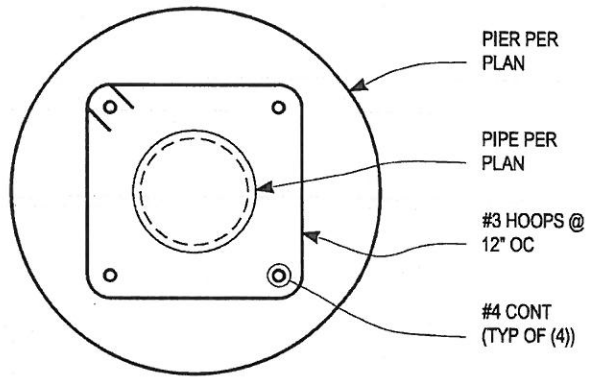
EXPIRES: 12/15



B GRADE BEAM SECTION



C WELDED STUD PLAN VIEW



A PIER PLAN VIEW

GENERAL NOTES:
 CONCRETE: F'C = 2500 psi
 REINFORCING STEEL: ASTM A615 GR 60 DEFORMED BAR
 WELD: E70xx
 STUD: A108
 PIPE: A53 GR B

JBE JOHNSON BRODERICK ENGINEERING

Civil and Structural Engineers
 325 W. 13th Ave
 Eugene, Or 97401-3402
 Tel (541) 338-9488
 Fax (541) 338-9483
 WWW.jbe.us.com

SHELDON BACKSTOP

Project:

Date: 10-01-2015
 Project No.: 15002.06
 Drawn By: FAD
 Checked By: AMB
 Revisions:

DETAILS

Sheet title:

Scale:

Sheet:

S 1.1