

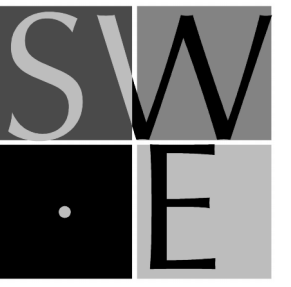
# EUGENE SCHOOL DISTRICT 4J HENRY D. SHELDON HIGH SCHOOL LIGHTING REPLACEMENT/ENERGY UPGRADE EUGENE, OREGON

## CONSTRUCTION DOCUMENTS

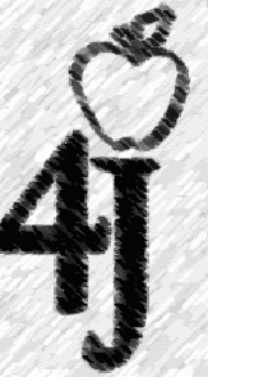
APRIL, 2015

OWNER :  
EUGENE SCHOOL DISTRICT 4J  
715 West Fourth Avenue  
Eugene, OR 97402  
(541) 790-7424  
FAX: (541) 790-7420  
BRUCE FOSTER

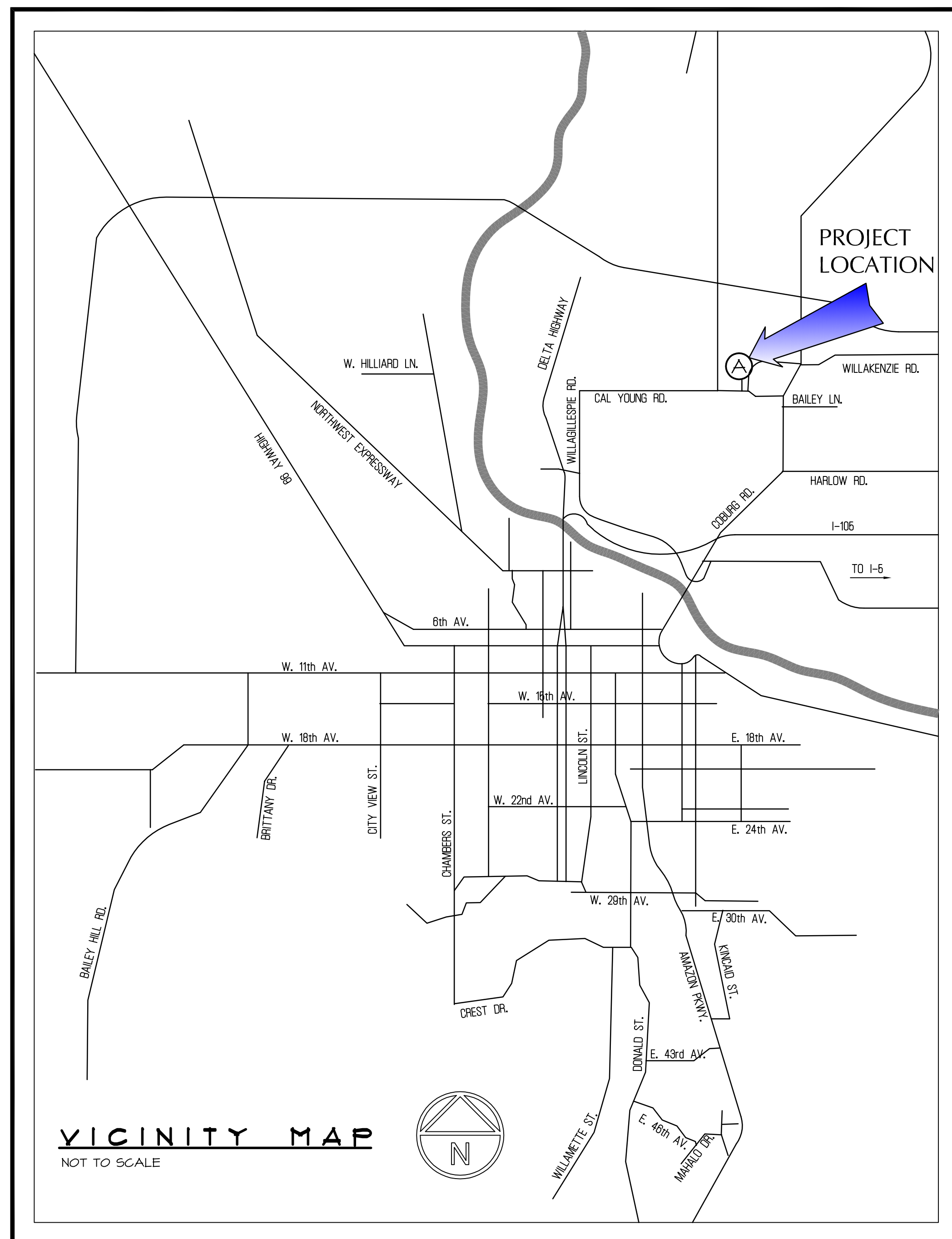
ENGINEER:  
SYSTEMS WEST ENGINEER, INC.  
411 High Street  
Eugene, OR 97401-2427  
(541)342-7210  
FAX: (541) 342-7220



SYSTEMS WEST ENGINEERS, INC.  
411 High Street  
Eugene, Oregon 97401-2427  
(541) 342-7210  
systemswestengineers.com



C.I.P. No. 450.652.725



**A** HENRY D. SHELDON HIGH SCHOOL  
2455 WILLAKENZIE RD,  
EUGENE OR 97401  
(541) 790-6600



LIGHTING  
REPLACEMENT/  
ENERGY UPGRADE

MULTI-SCHOOL  
SITES

LOCATION:  
200 N. Monroe St.  
Eugene, Oregon

OWNER:  
EUGENE SCHOOL  
DISTRICT 4J

TITLE SHEET:  
VICINITY MAP  
&  
SHEET INDEX

### SHEET INDEX

G-01	TITLE SHEET: VICINITY MAP, SHEET INDEX
E-1	LEGEND AND GENERAL NOTES
E-2	PARTIAL FLOOR PLAN SHELDON HIGH SCHOOL - LIGHTING DEMOLITION
E-3	PARTIAL FLOOR SHELDON HIGH SCHOOL - LIGHTING PLAN
E-4	PARTIAL FLOOR SHELDON HIGH SCHOOL - LIGHTING PLAN
E-5	PARTIAL FLOOR SHELDON HIGH SCHOOL - LIGHTING PLAN
E-6	PARTIAL FLOOR SHELDON HIGH SCHOOL - LIGHTING PLAN
E-7	PARTIAL FLOOR SHELDON HIGH SCHOOL - LIGHTING PLAN
E-8	PARTIAL FLOOR SHELDON HIGH SCHOOL - LIGHTING PLAN
E-9	PARTIAL FLOOR SHELDON HIGH SCHOOL - LIGHTING PLAN
E-10	LIGHTING DETAILS

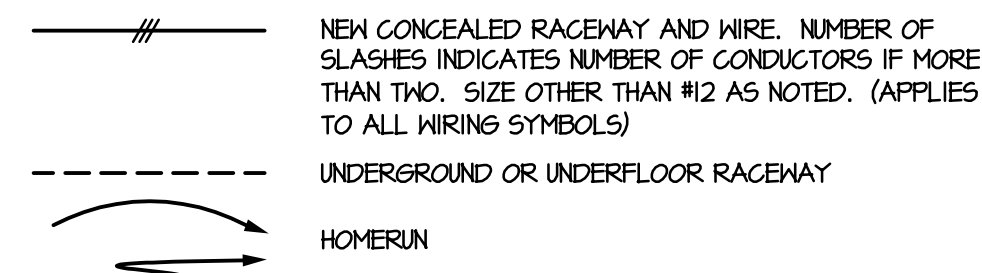
MARK	DATE	DESCRIPTION
DESIGNED	JDH	
DRAWN	JDH	
CHECKED	JLG	
FILENAME	G-01_Sheldon	
DATE	17APRIL2015	
PROJECT	MO28.01	

**G-01**  
SHT 1 OF 11



# ELECTRICAL LEGEND

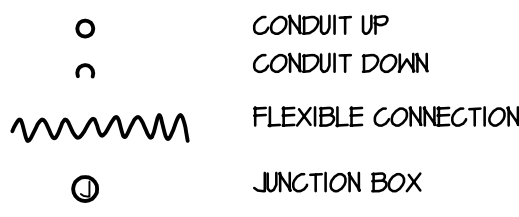
## LOW-VOLTAGE ELECTRICAL CONDUCTORS & CABLES



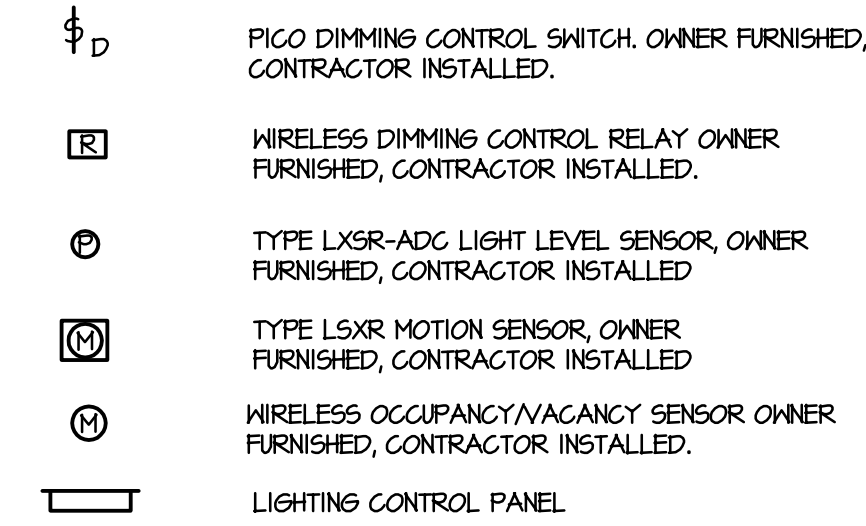
## GROUNDING & BONDING FOR ELECTRICAL SYSTEMS



## RACEWAYS & BOXES FOR ELECTRICAL SYSTEMS



## LIGHTING CONTROL EQUIPMENT



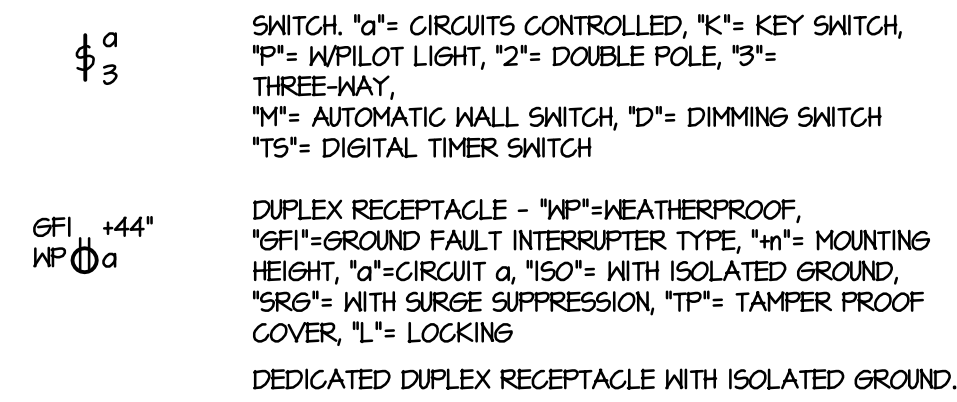
## PANELBOARDS



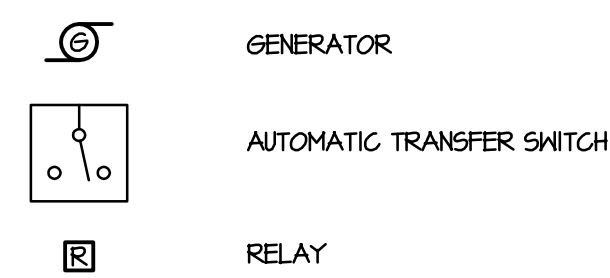
## ELECTRICAL CABINETS & ENCLOSURES



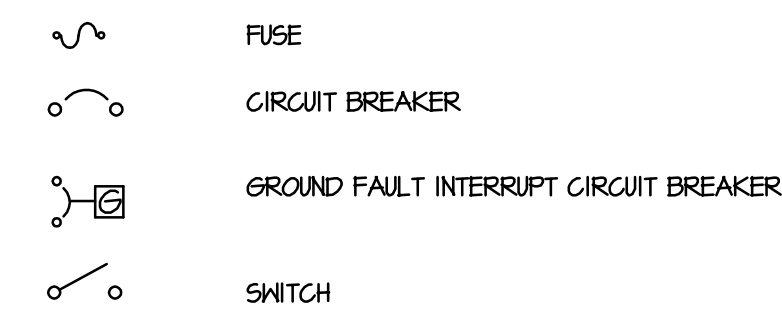
## WIRING DEVICES



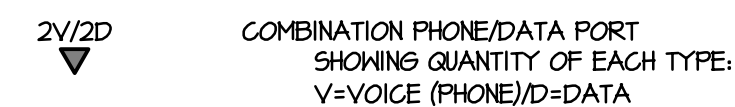
## STANDBY GENERATION SYSTEM



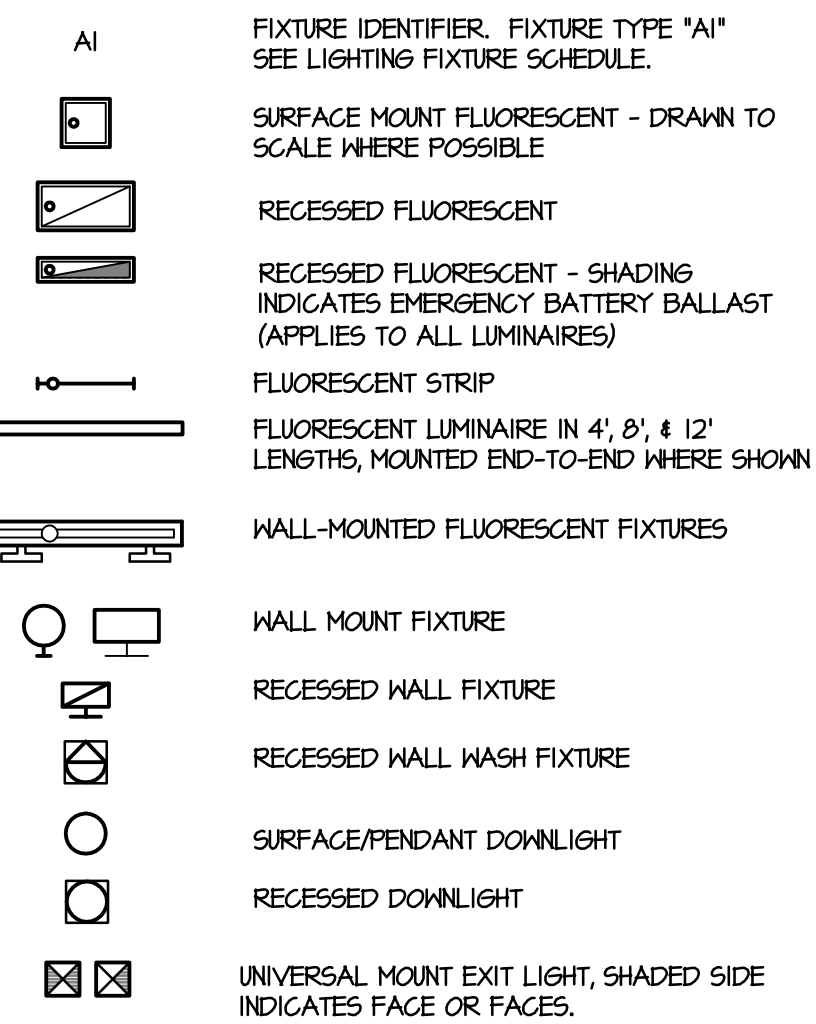
## OVER-CURRENT PROTECTIVE DEVICES



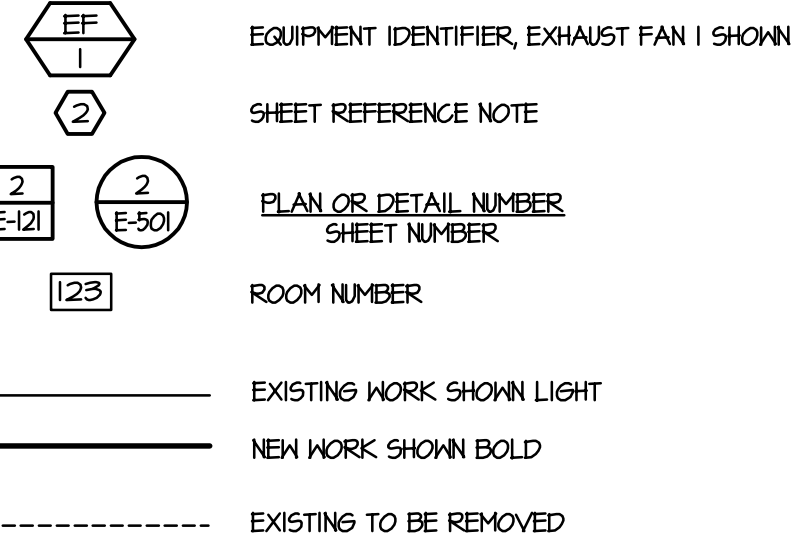
## DATA COMMUNICATIONS



## LIGHTING FIXTURES



## GENERAL



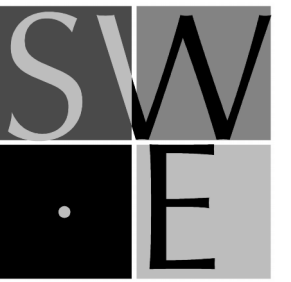
## ABBREVIATIONS

AFF	ABOVE FINISHED FLOOR	IDF	INTERMEDIATE DISTRIBUTION FRAME
BLDG	BLDG	L.V.	LOW VOLTAGE
C	CONDUIT	MDF	MAIN DISTRIBUTION FRAME
cd	CANDELA	MECH	MECHANICAL
CKT	CIRCUIT	(N)	NEW
DIM	ON/OFF DIMMING	PNL	PANEL
DSP	DIGITAL SIGNAL PROCESSOR	PRS	PROGRAM RAPID START
(E)	EXISTING	SHBD	SWITCHBOARD
ELEG	ELECTRICAL	TTB	TELEPHONE TERMINAL BOARD
EMERG	EMERGENCY	TVSS	TRANSIENT VOLTAGE SURGE SUPPRESSION
FAM	FIRE ALARM MASTER	TYP	TYPICAL
GFI	GROUND FAULT INTERRUPTER	WG	WIREGUARD
GND	GROUND	WP	WEATHERPROOF
HVAC	HEATING, VENTILATING, & AIR CONDITIONING		

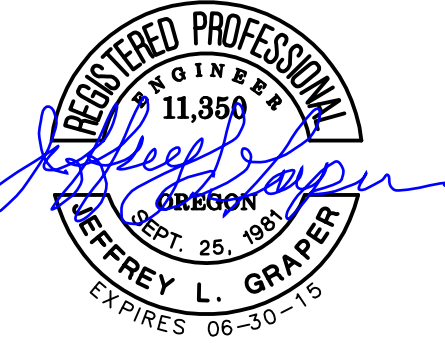
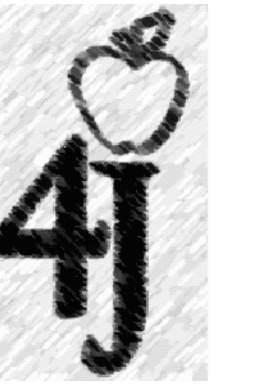
## GENERAL NOTES:

- THE FACILITY WILL REMAIN IN OPERATION DURING CONSTRUCTION. COORDINATE ALL SHUTDOWNS AND CONSTRUCTION ACTIVITY WITH FACILITIES STAFF.
- SIZE AND LOCATION OF ALL EXISTING ELECTRICAL EQUIPMENT IS APPROXIMATE. CONTRACTOR SHALL SITE VERIFY THE EXACT LOCATION OF EXISTING AND CONSTRUCT ALL WORK FROM FIELD DIMENSIONS. CONTRACTOR SHALL MAKE ADJUSTMENTS NECESSARY TO ACCOMMODATE MINOR DEVIATIONS AT NO COST TO OWNER.
- LIGHT LINE WORK INDICATES EXISTING ELECTRICAL CIRCUITRY AND OTHER ELECTRICAL EQUIPMENT. DASHED LINE WORK INDICATES ELECTRICAL DEVICES AND EQUIPMENT TO BE REMOVED.
- WHERE EXISTING EQUIPMENT IS REMOVED AND NOT REPLACED IN THE SAME LOCATION, PATCH AND PAINT SURFACES TO MATCH ORIGINAL CONDITION.
- REMOVE ALL ABANDONED RACEWAY AND WIRING.
- RECONNECT ALL CIRCUITRY TO REMAINING DEVICES AND EQUIPMENT.

LUMINAIRE SCHEDULE				
TYPE	DESCRIPTION	EXAMPLE MANUFACTURER	LAMP	NOTES
'A1'	4' LINEAR PRISMATIC LED SURFACE MOUNT	CORELITE RZL SERIES OWNER FURNISHED CONTRACTOR INSTALLED	LED 3500K 80+ CRI 2880 LUMENS (.30_W)	MOUNTING :CABLE HOUSING : LENS/REFL:PRISMATIC LENS VOLTAGE :UNIVERSAL BALLAST :LOW VOLTAGE 0-10 V DIMMING MISC :FOR MOUNTING REQUIREMENTS SEE DETAIL (E-10)
'A2'	8' LINEAR PRISMATIC LED SURFACE MOUNT	CORELITE RZL SERIES OWNER FURNISHED CONTRACTOR INSTALLED	LED 3500K 80+ CRI 5760 LUMENS (.60_W)	MOUNTING :CABLE HOUSING : LENS/REFL:PRISMATIC LENS VOLTAGE :UNIVERSAL BALLAST :LOW VOLTAGE 0-10 V DIMMING MISC :FOR MOUNTING REQUIREMENTS SEE DETAIL (E-10)
'A3'	12' LINEAR PRISMATIC LED SURFACE MOUNT	CORELITE RZL SERIES OWNER FURNISHED CONTRACTOR INSTALLED	LED 3500K 80+ CRI 8640 LUMENS (.90_W)	MOUNTING :CABLE HOUSING : LENS/REFL:PRISMATIC LENS VOLTAGE :UNIVERSAL BALLAST :LOW VOLTAGE 0-10 V DIMMING MISC :FOR MOUNTING REQUIREMENTS SEE DETAIL (E-10)
'C1'	1 X 4 SURFACE LED DIRECT / INDIRECT	LITHONIA 51L4 OWNER FURNISHED CONTRACTOR INSTALLED	LED 3500K 80+ CRI 3688 LUMENS (.349_W)	MOUNTING :SURFACE HOUSING :STEEL LENS/REFL:SEMI-DIFFUSE LENS VOLTAGE :UNIVERSAL BALLAST : MISC :
'D'	4' WALL MOUNTED LED DIRECT	CREE L54 OWNER FURNISHED CONTRACTOR INSTALLED	LED 3500K 80+ CRI 2500 LUMENS (.23_W)	MOUNTING :WALL, 6" BELOW CEILING HOUSING : LENS/REFL:SEMI-DIFFUSE LENS VOLTAGE :UNIVERSAL BALLAST : MISC :
'G'	SURFACE SQUARE LED DIRECT	LITHONIA VRC OWNER FURNISHED CONTRACTOR INSTALLED	LED 5000K 80+ CRI 3384 LUMENS (.41_W)	MOUNTING :SURFACE HOUSING : LENS/REFL:SEMI-DIFFUSE LENS VOLTAGE :UNIVERSAL BALLAST : MISC :
'R1'	2 x 4 NOMINAL LED DIRECT	LITHONIA 2VTL4 30L ADP MVOLT OWNER FURNISHED CONTRACTOR INSTALLED	LED 3500K 80+ CRI 3000 LUMENS (.31_W)	MOUNTING :RECESS HOUSING :RUGGED, ONE-PIECE COLD-ROLLED STEEL COATED POLYESTER. LENS/REFL:VOLUMETRIC VOLTAGE :UNIVERSAL BALLAST : MISC :
'R2'	2 x 2 NOMINAL LED DIRECT	LITHONIA 2VTL2 33L ADP MVOLT OWNER FURNISHED CONTRACTOR INSTALLED	LED 3500K 80+ CRI 3300 LUMENS (.345_W)	MOUNTING :RECESS HOUSING :RUGGED, ONE-PIECE COLD-ROLLED STEEL COATED POLYESTER. LENS/REFL:VOLUMETRIC VOLTAGE :UNIVERSAL BALLAST : MISC :
'W'	WALL PACK LED DIRECT	LITHONIA OLH OWNER FURNISHED CONTRACTOR INSTALLED	LED 5000K 80+ CRI 2720 LUMENS (.33_W)	MOUNTING :SURFACE HOUSING :DARK BRONZE LENS/REFL:SEMI-DIFFUSE LENS VOLTAGE :UNIVERSAL BALLAST : INTEGRAL PHOTOCELL



SYSTEMS WEST ENGINEERS, INC.  
4111 High Street  
Eugene, Oregon 97401-2427  
541.342.7210  
systemswestengineers.com



LIGHTING REPLACEMENT/ ENERGY UPGRADE

MULTI-SCHOOL SITES

LOCATION:  
200 N. Monroe St.  
Eugene, Oregon

OWNER:  
EUGENE SCHOOL DISTRICT 4J

LEGEND & GENERAL NOTES

MARK	DATE	DESCRIPTION

DESIGNED JDH

DRAWN JDH

CHECKED JL6

FILENAME E-1\_L6

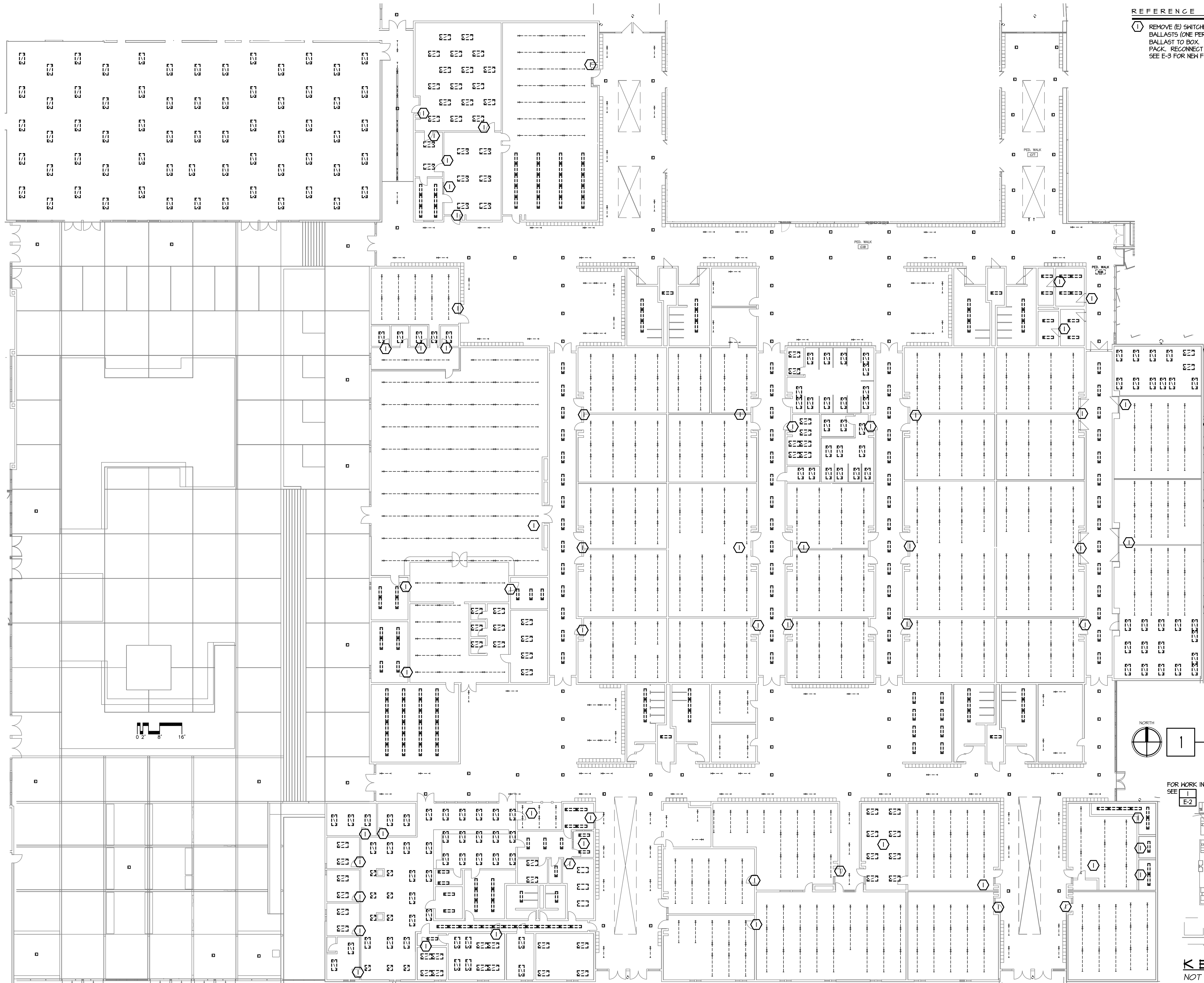
DATE 17APRIL2015

PROJECT M028.01

E-1

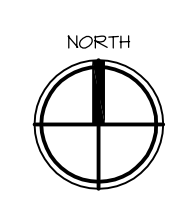
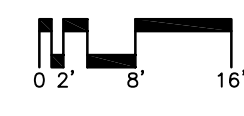
SHT 2 OF 11





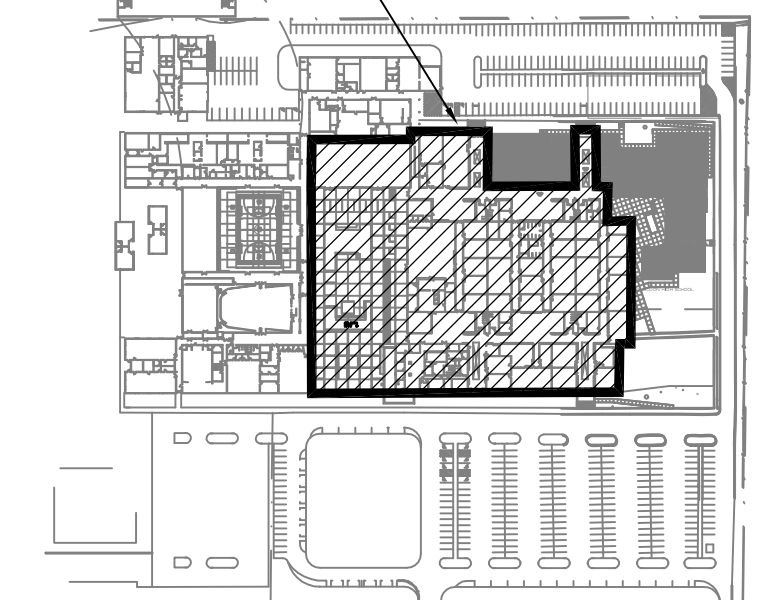
**REFERENCE NOTES:**

① REMOVE (E) SWITCHES AND PROVIDE BLANK COVERS. REMOVE BALLASTS (ONE PER FIXTURE SECTION) AND REMOVE WIRING FROM BALLAST TO BOX. REMOVE (E) MOTION SENSOR AND POWER PACK. RECONNECT FEED THROUGH SWITCH-BOX TO FIXTURES. SEE E-3 FOR NEW FIXTURE LAYOUT, TYPICAL.

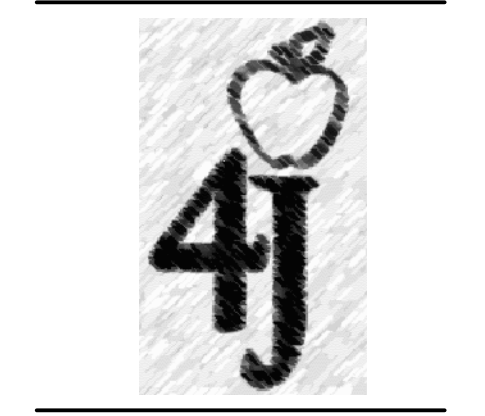


**PARTIAL FLOOR PLAN  
SHELDON HIGH SCHOOL  
- LIGHTING DEMOLITION**  
SCALE: 1/16" = 1'-0" (PRINTED ON 36"x24")

FOR WORK IN THIS AREA  
SEE  
E-2



**KEY PLAN**  
NOT TO SCALE



LIGHTING  
REPLACEMENT/  
ENERGY UPGRADE

MULTI-SCHOOL  
SITES

LOCATION:  
200 N. Monroe St.  
Eugene, Oregon

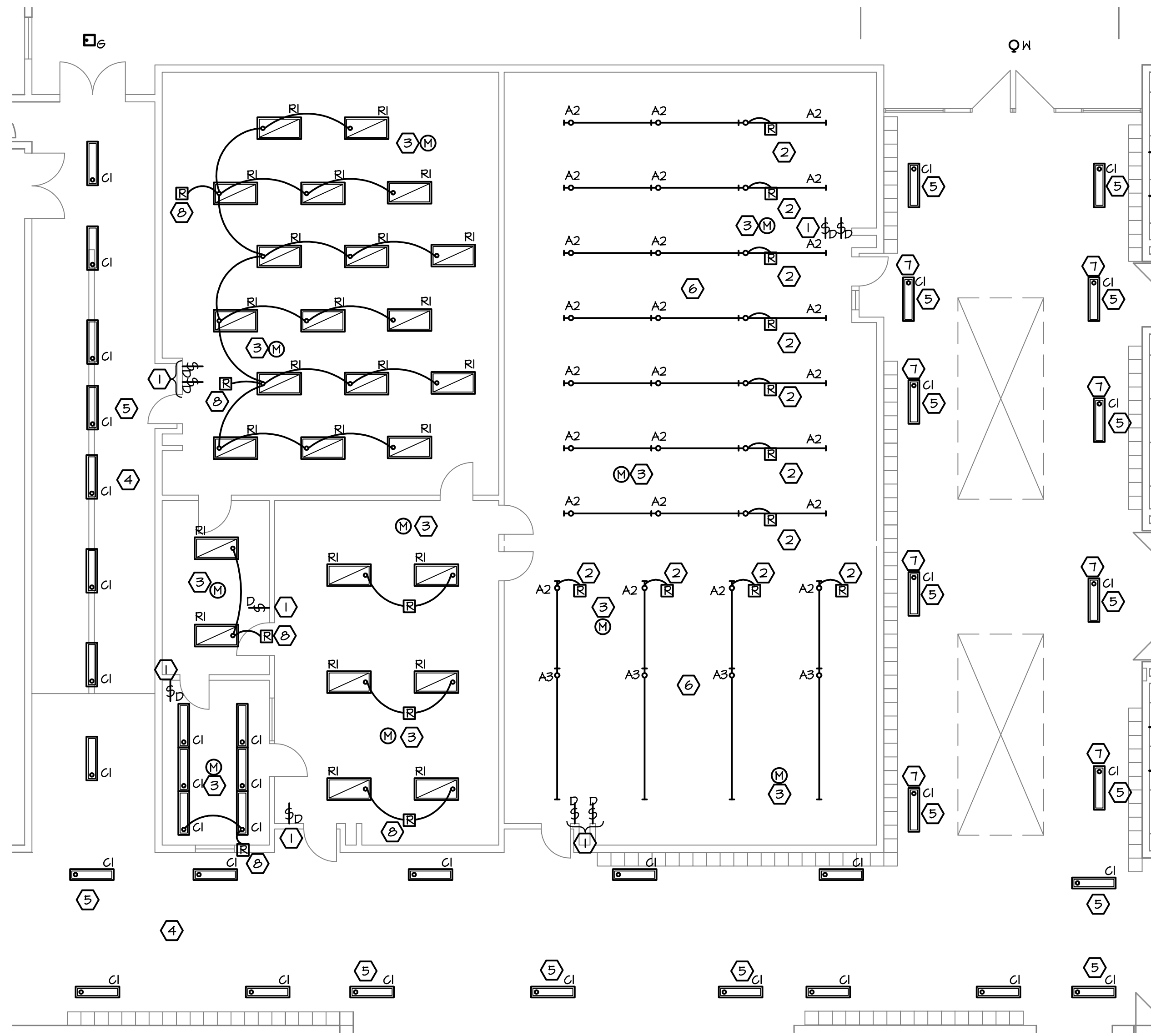
OWNER:  
EUGENE SCHOOL  
DISTRICT 4J

PARTIAL FLOOR  
PLAN SHELDON  
HIGH SCHOOL  
- LIGHTING  
DEMOLITION

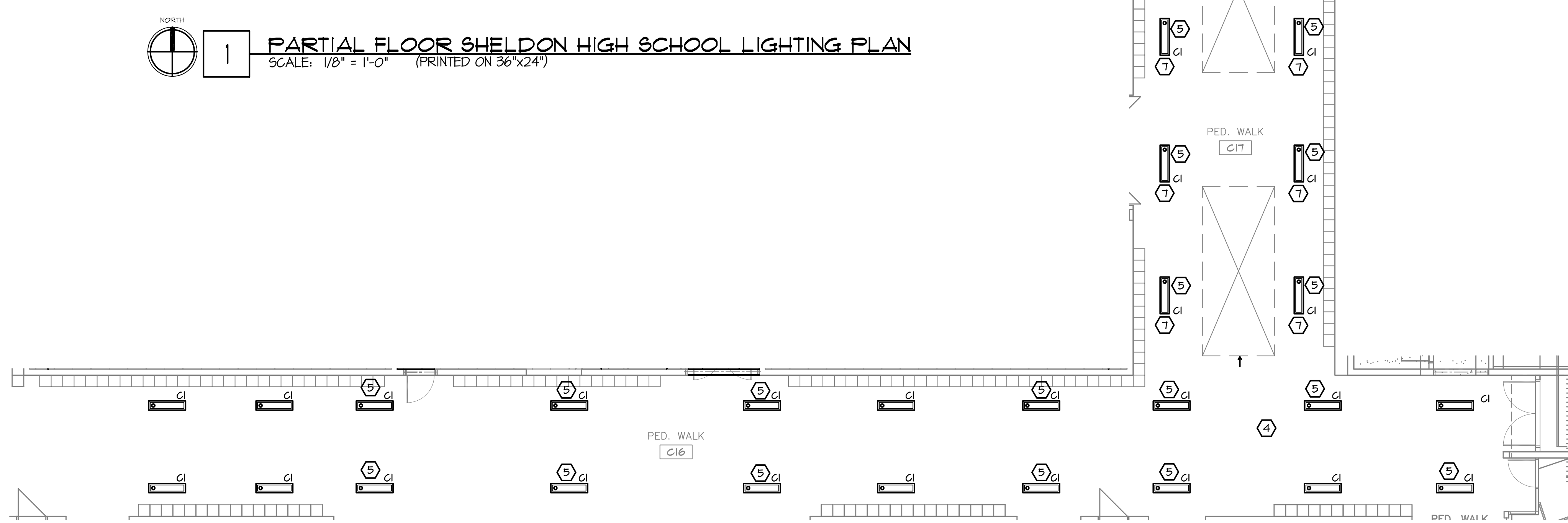
MARK	DATE	DESCRIPTION
DESIGNED	JDH	
DRAWN	JDH	
CHECKED	JLG	
FILENAME	E-2_DP	

DATE 17APRIL2015  
PROJECT M02B.01

**E-2**  
SHT 3 OF 11



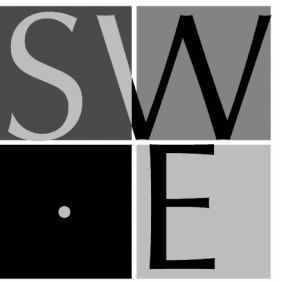
**1 PARTIAL FLOOR SHELDON HIGH SCHOOL LIGHTING PLAN**  
 SCALE: 1/8" = 1'-0" (PRINTED ON 36"x24")



**2 PARTIAL FLOOR SHELDON HIGH SCHOOL LIGHTING PLAN**  
 SCALE: 1/8" = 1'-0" (PRINTED ON 36"x24")

**REFERENCE NOTES:**

- 1 PICO CONTROL SWITCHES, 2 PER ROOM. PROGRAM PROJECTION SCREEN ROW AND REMAINING FIXTURES SEPARATELY.
- 2 WIRELESS DIMMING CONTROL RELAY. MOUNT ON TOP OF FIXTURE AT FEED END AND CONNECT. SEE DETAILS.
- 3 WIRELESS OCCUPANCY/VACANCY SENSOR, 2 PER ROOM. PROGRAM AS VACANCY SENSOR.
- 4 CONNECT FIXTURES IN THIS AREA TO EXISTING CIRCUITRY AND SWITCHING.
- 5 PROVIDE BLANK PLATE OVER (E) FIXTURE OPENING.
- 6 TYPICAL CLASSROOM WIRING SHOWN IN THIS AREA.
- 7 INSTALL PROGRAM AND PHOTO SENSOR FOR DAYLIGHT HARVESTING.
- 8 WIRELESS DIMMING CONTROL RELAY. MOUNT ON END OF SURFACE FIXTURE OR ABOVE LAY-IN CEILING. EXTEND 0-10V WIRING AND SWITCH LEG TO ADJACENT FIXTURES.



SYSTEMS WEST ENGINEERS, INC.  
 4111 High Street  
 Eugene, Oregon 97403-2427  
 541.342.7210  
 systemswestengineers.com



LIGHTING  
 REPLACEMENT/  
 ENERGY UPGRADE

MULTI-SCHOOL  
 SITES

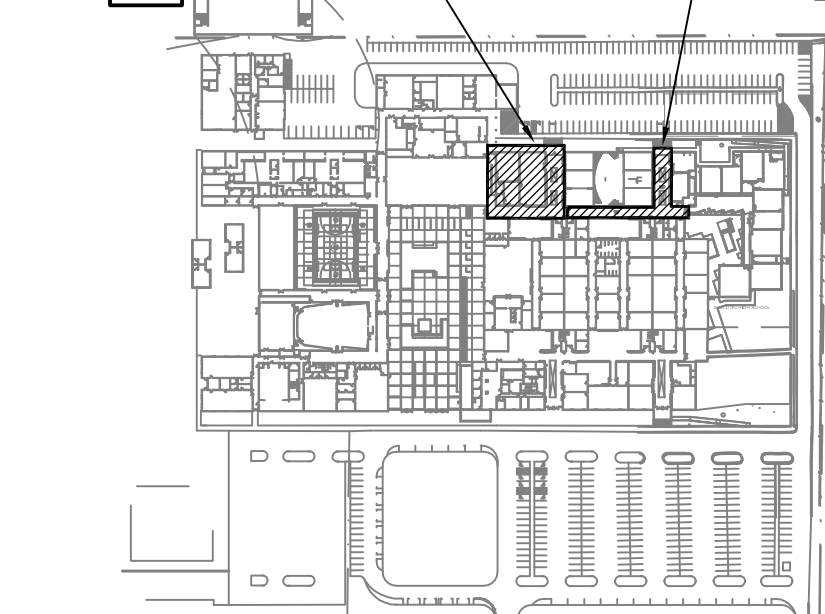
LOCATION:  
 200 N. Monroe St.  
 Eugene, Oregon

OWNER:  
 EUGENE SCHOOL  
 DISTRICT 4J

PARTIAL FLOOR  
 SHELDON HIGH  
 SCHOOL  
 LIGHTING  
 PLANS

FOR WORK IN THIS AREA  
 SEE 1 E-3

FOR WORK IN THIS AREA  
 SEE 2 E-3

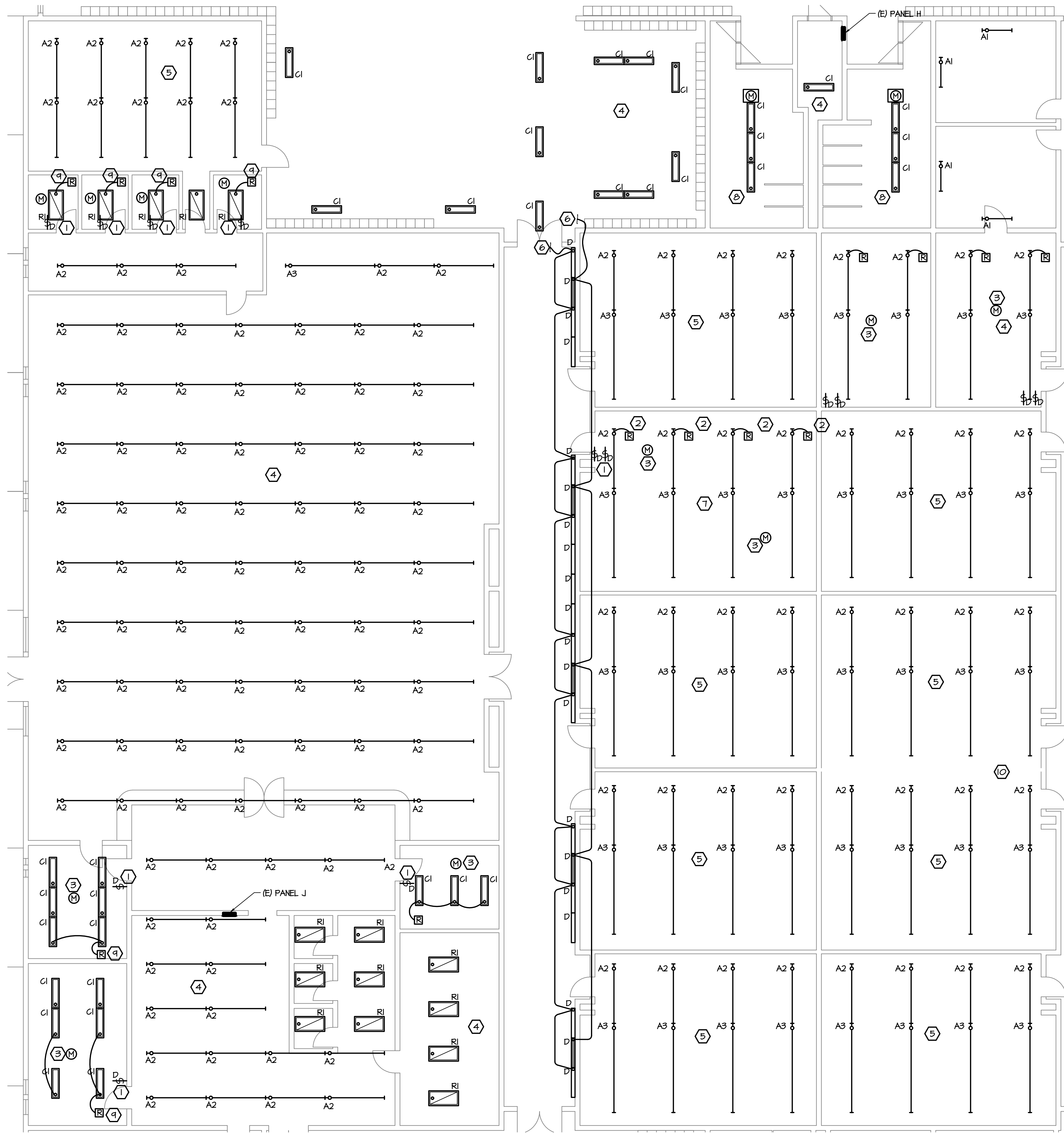


**KEY PLAN**  
 NOT TO SCALE

MARK	DATE	DESCRIPTION
DESIGNED	JDH	
DRAWN	JDH	
CHECKED	JLG	
FILENAME	E-3-4_FPLT6	
DATE	17APRIL2015	
PROJECT	M02B.01	

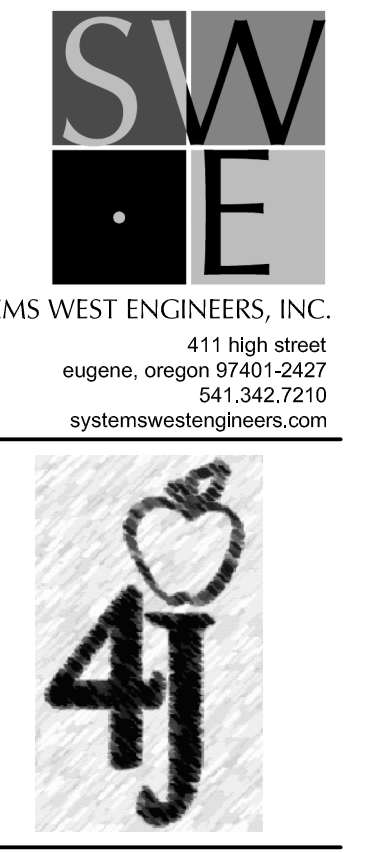
**E-3**





REFERENCE NOTES:

- 1 PICO CONTROL SWITCHES, 2 PER CLASS ROOM, ONE PER OFFICE. PROGRAM PROJECTION SCREEN ROW AND REMAINING FIXTURES SEPARATELY.
- 2 WIRELESS DIMMING CONTROL RELAY. MOUNT ON TOP OF FIXTURE AT FEED END AND CONNECT. SEE DETAILS.
- 3 WIRELESS OCCUPANCY/VACANCY SENSOR, 2 PER ROOM. PROGRAM AS VACANCY SENSOR.
- 4 CONNECT FIXTURES IN THIS AREA TO EXISTING CIRCUITRY AND SWITCHING.
- 5 SEE TYPICAL CLASSROOM WIRING EXAMPLE, THIS SHEET.
- 6 CONNECT TO (E) HALLWAY LIGHTING CIRCUITRY. EXTEND EMERGENCY CIRCUITRY TO NEW FIXTURES IN SIMILAR LOCATION. MC CABLE MAY BE USED BETWEEN FIXTURE AND CEILING.
- 7 TYPICAL CLASSROOM WIRING SHOWN IN THIS ROOM.
- 8 CONNECT FIXTURES TO NEW MOTION SENSORS AND PROGRAM.
- 9 WIRELESS DIMMING CONTROL RELAY. MOUNT ON END OF SURFACE FIXTURE OR ABOVE LAY-IN CEILING. EXTEND 0-10V WIRING AND SWITCH LEG TO ADJACENT FIXTURES.
- 10 PROVIDE (2) SETS OF PICO CONTROL SWITCHES.



SYSTEMS WEST ENGINEERS, INC.  
411 High Street  
Eugene, Oregon 97401-2427  
541.342.7210  
systemswestengineers.com



LIGHTING  
REPLACEMENT/  
ENERGY UPGRADE

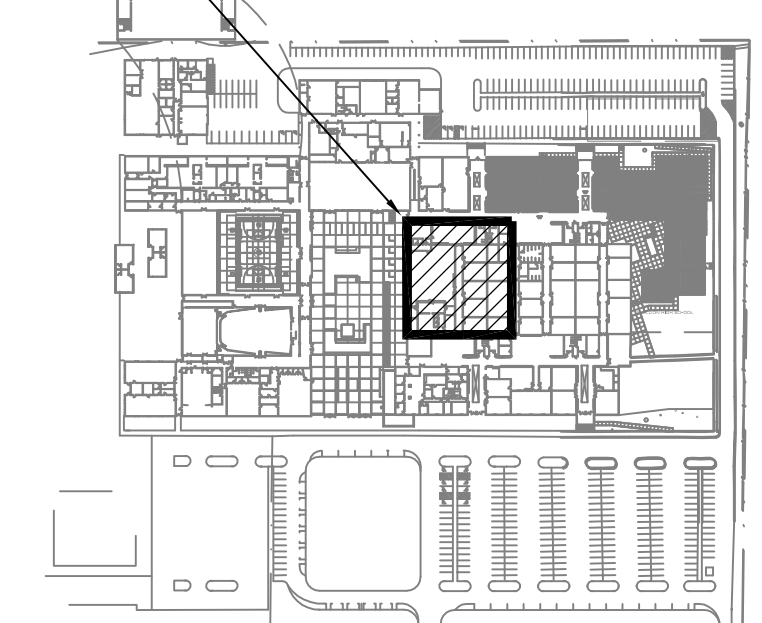
MULTI-SCHOOL  
SITES

LOCATION:  
200 N. Monroe St.  
Eugene, Oregon

OWNER:  
EUGENE SCHOOL  
DISTRICT 4J

PARTIAL FLOOR  
SHELDON HIGH SCHOOL  
LIGHTING  
PLANS

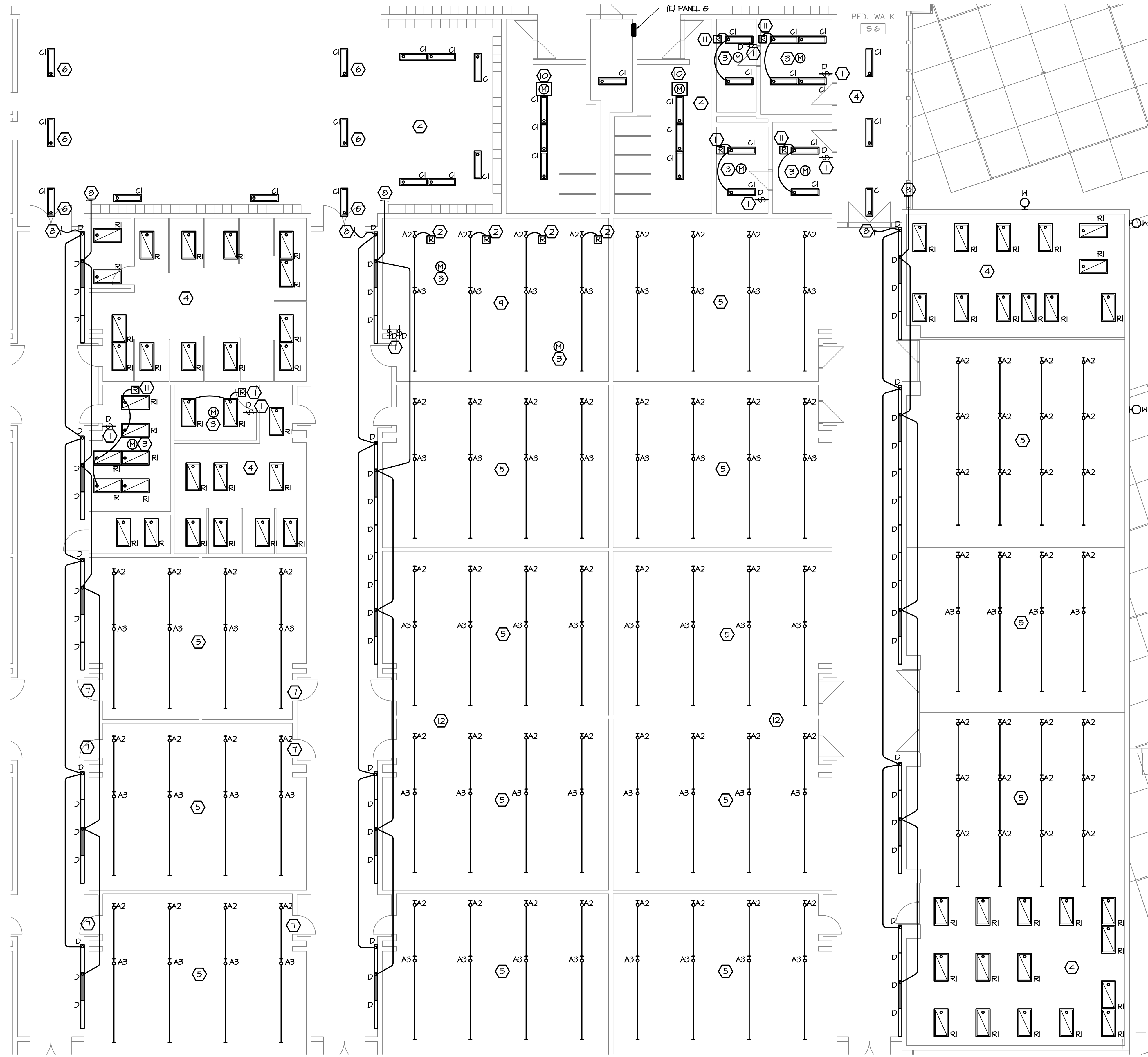
FOR WORK IN THIS AREA  
SEE  
E-4



KEY PLAN  
NOT TO SCALE

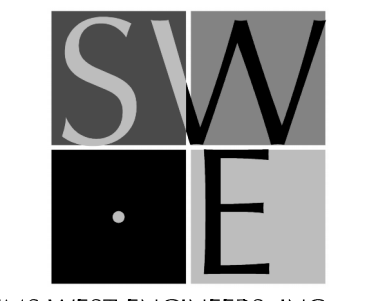
1 PARTIAL FLOOR SHELDON HIGH SCHOOL LIGHTING PLAN  
SCALE: 1/8" = 1'-0" (PRINTED ON 36"x24")

MARK	DATE	DESCRIPTION
DESIGNED	JDH	
DRAWN	JDH	
CHECKED	JLG	
FILENAME	E-3-4_FPLT6	
DATE	17APRIL2015	
PROJECT	M02B.01	
<b>E-4</b>		
SHT	5	OF 11

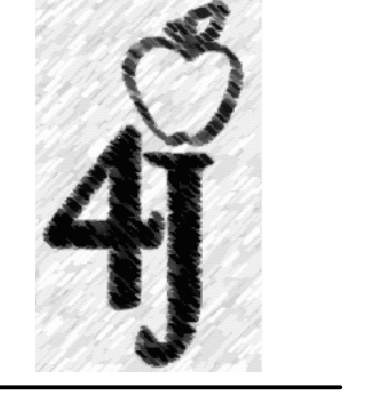


**REFERENCE NOTES:**

- ① PICO CONTROL SWITCHES, 2 PER ROOM. PROGRAM PROJECTION SCREEN ROOM AND REMAINING FIXTURES SEPARATELY.
- ② WIRELESS DIMMING CONTROL RELAY. MOUNT ON TOP OF FIXTURE AT FEED END AND CONNECT. SEE DETAILS.
- ③ WIRELESS OCCUPANCY/VACANCY SENSOR, 2 PER ROOM. PROGRAM AS VACANCY SENSOR.
- ④ CONNECT FIXTURES IN THIS AREA TO EXISTING CIRCUITRY AND SWITCHING.
- ⑤ SEE TYPICAL CLASSROOM WIRING EXAMPLE, THIS SHEET.
- ⑥ PROVIDE BLANK COVER OVER (E) FIXTURE OPENING.
- ⑦ PROVIDE (2) SETS OF PICO CONTROL SWITCHES.
- ⑧ CONNECT TO (E) HALLWAY CIRCUITRY. EXTEND EMERGENCY CIRCUITRY TO NEW FIXTURES. MC CABLE MAY BE USED BETWEEN FIXTURE AND CEILING.
- ⑨ TYPICAL CLASSROOM WIRING SHOWN IN THIS ROOM.
- ⑩ CONNECT FIXTURES TO NEW MOTION SENSOR AND PROGRAM.
- ⑪ WIRELESS DIMMING CONTROL RELAY MOUNT ON END OF SURFACE FIXTURE OR ABOVE LAY-IN CEILING. EXTEND 0-10V WIRING AND SWITCH LEG TO ADJACENT FIXTURES.
- ⑫ PROVIDE (2) SETS OF PICO CONTROL SWITCHES.



SYSTEMS WEST ENGINEERS, INC.  
411 High Street  
Eugene, Oregon 97401-2427  
541.342.7210  
systemswestengineers.com

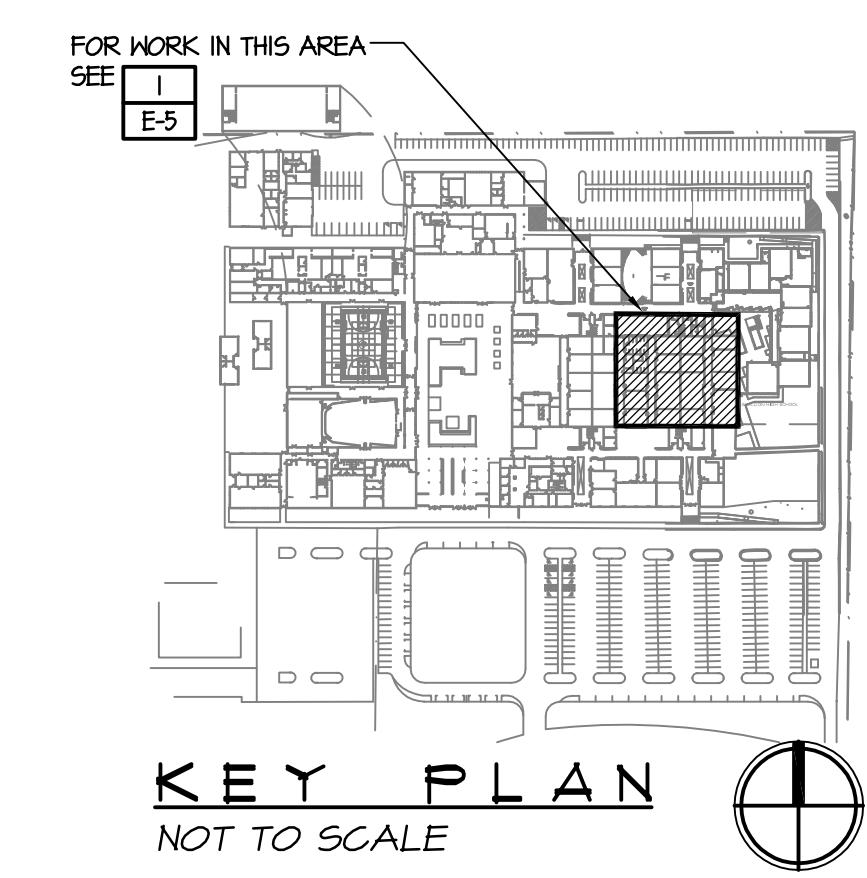


LIGHTING  
REPLACEMENT/  
ENERGY UPGRADE

MULTI-SCHOOL  
SITES

LOCATION:  
200 N. Monroe St.  
Eugene, Oregon  
OWNER:  
EUGENE SCHOOL  
DISTRICT 4J

PARTIAL FLOOR  
SHELDON HIGH  
SCHOOL  
LIGHTING  
PLANS



**1 PARTIAL FLOOR SHELDON HIGH SCHOOL LIGHTING PLAN**  
SCALE: 1/8" = 1'-0" (PRINTED ON 36"x24")

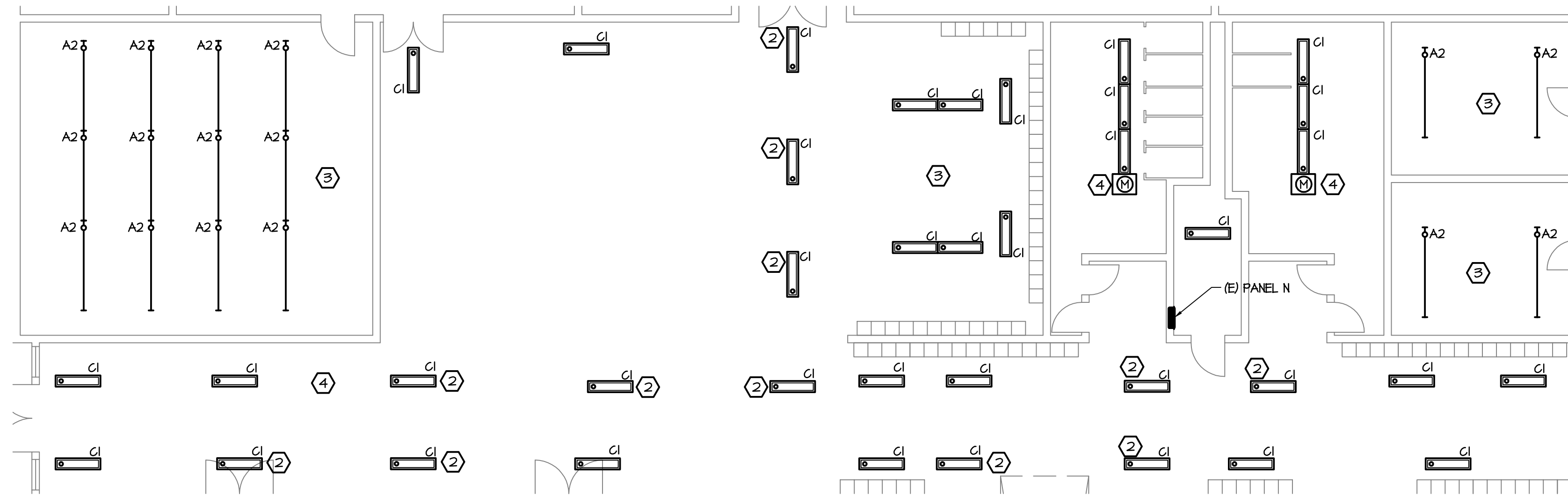
MARK	DATE	DESCRIPTION

DESIGNED JDH  
DRAWN JDH  
CHECKED JLG  
FILENAME  
E-3-4\_FPLT6

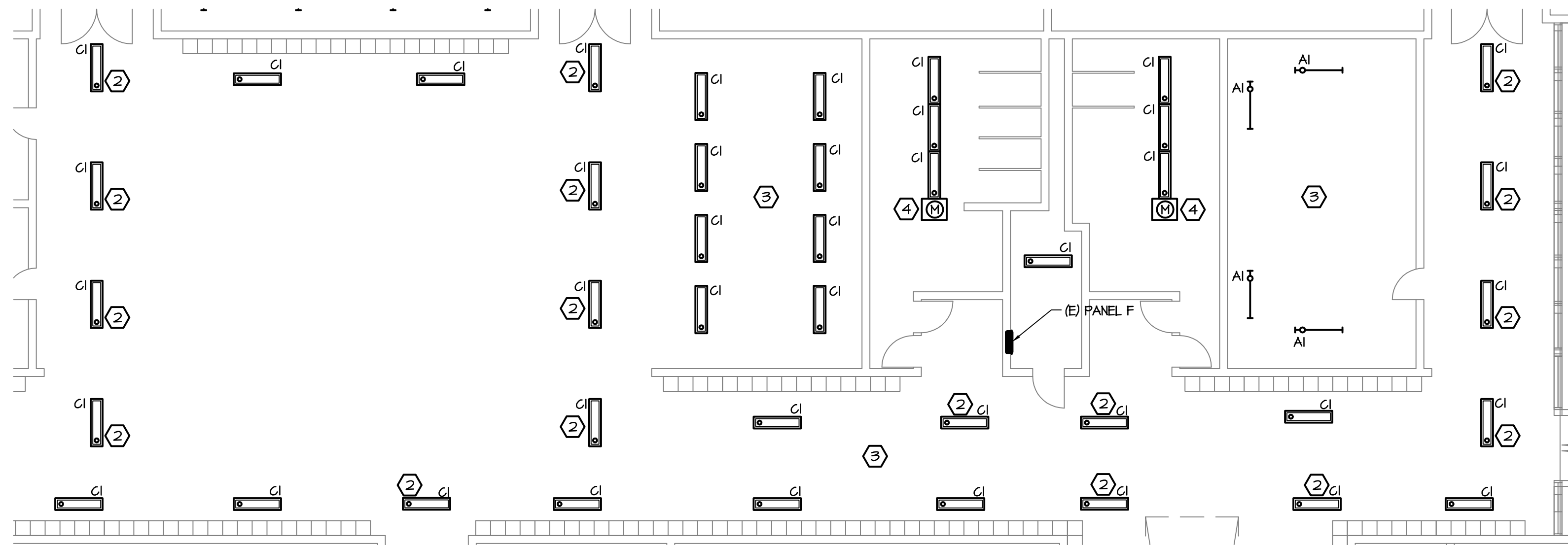
DATE 17APRIL2015  
PROJECT M02B.01

**E-5**  
SHT 6 OF 11





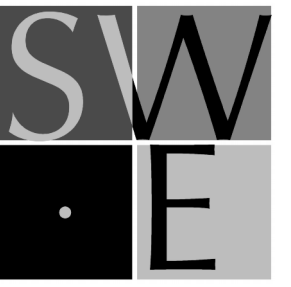
**1 PARTIAL FLOOR SHELDON HIGH SCHOOL LIGHTING PLAN**  
 SCALE: 1/8" = 1'-0" (PRINTED ON 36"x24")



**2 PARTIAL FLOOR SHELDON HIGH SCHOOL LIGHTING PLAN**  
 SCALE: 1/8" = 1'-0" (PRINTED ON 36"x24")

**REFERENCE NOTES:**

- ① CONNECT FIXTURES IN THIS AREA TO EXISTING CIRCUITRY AND SWITCHING.
- ② PROVIDE BLANK PLATE OVER (E) FIXTURE OPENING.
- ③ CONNECT FIXTURES IN THIS AREA TO EXISTING CIRCUITRY AND SWITCHING.
- ④ CONNECT FIXTURES TO NEW MOTION SENSOR AND PROGRAM.



SYSTEMS WEST ENGINEERS, INC.  
 411 High Street  
 Eugene, Oregon 97401-2427  
 541.342.7210  
 systemswestengineers.com



LIGHTING  
 REPLACEMENT/  
 ENERGY UPGRADE

MULTI-SCHOOL  
 SITES

LOCATION:  
 200 N. Monroe St.  
 Eugene, Oregon  
 OWNER:  
 EUGENE SCHOOL  
 DISTRICT 4J

PARTIAL FLOOR  
 SHELDON HIGH  
 SCHOOL  
 LIGHTING  
 PLANS

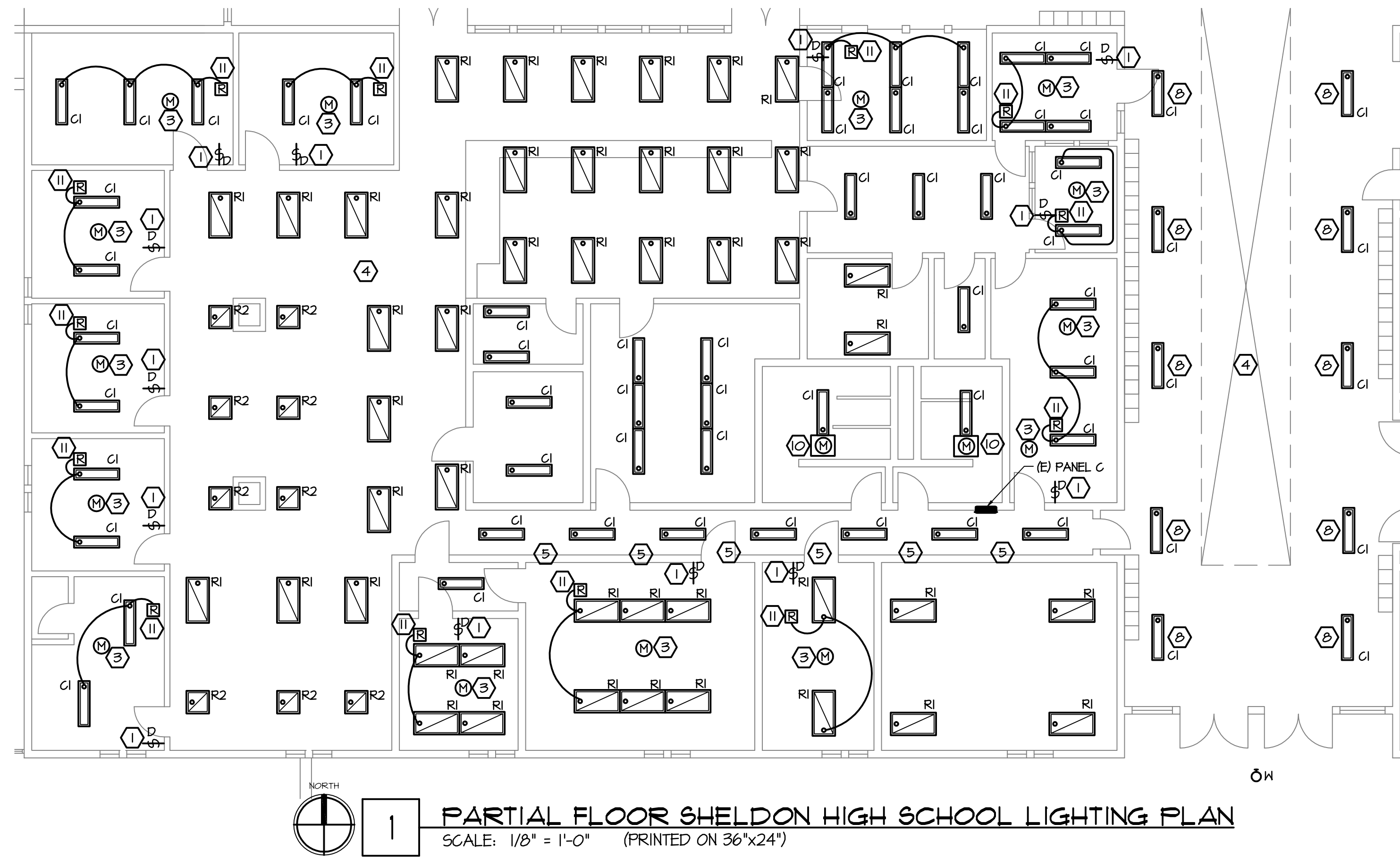
FOR WORK IN THIS AREA SEE **1** E-6

FOR WORK IN THIS AREA SEE **2** E-6

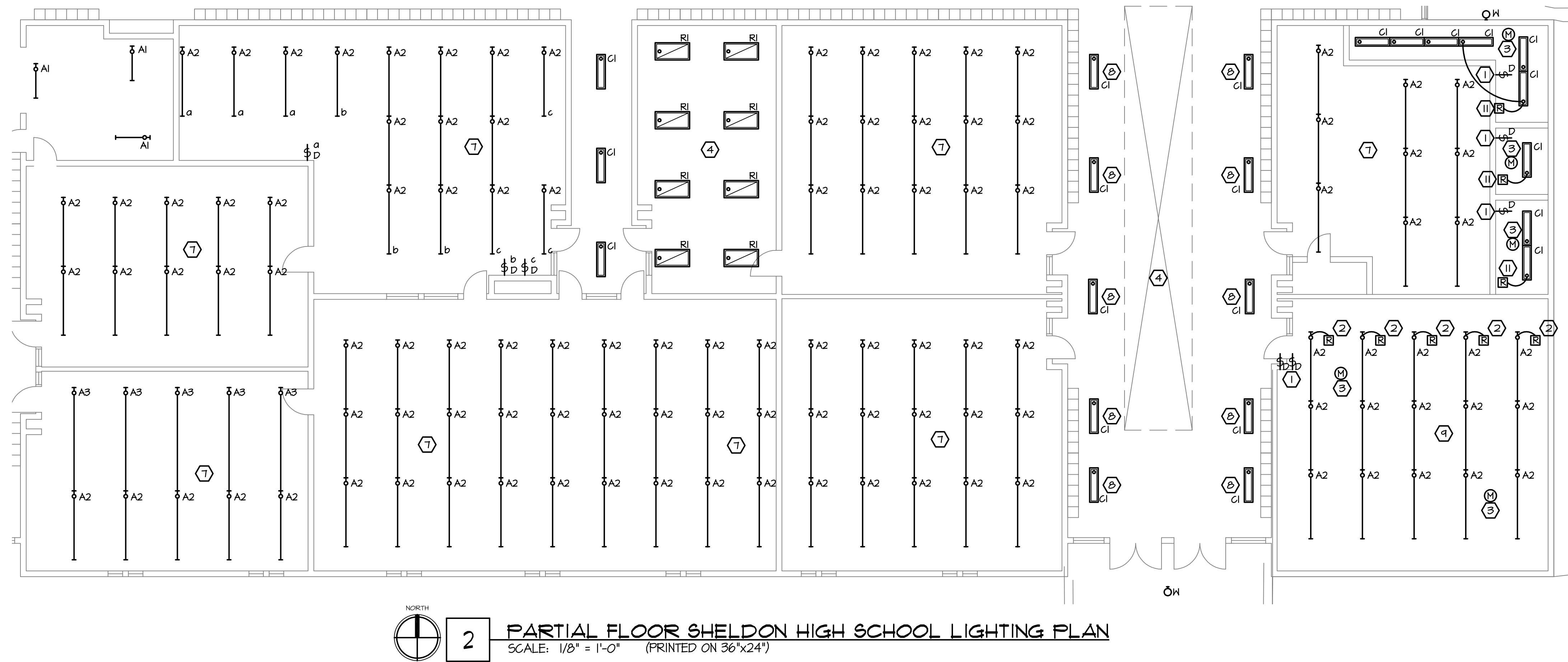
MARK	DATE	DESCRIPTION
DESIGNED	JDH	
DRAWN	JDH	
CHECKED	JLG	
FILENAME	E-3-4_FPLT6	
DATE	17APRIL2015	
PROJECT	M02B.01	

**KEY PLAN**  
 NOT TO SCALE

**E-6**  
 SHT 7 OF 11



**1 PARTIAL FLOOR SHELDON HIGH SCHOOL LIGHTING PLAN**  
 SCALE: 1/8" = 1'-0" (PRINTED ON 36"x24")



**2 PARTIAL FLOOR SHELDON HIGH SCHOOL LIGHTING PLAN**  
 SCALE: 1/8" = 1'-0" (PRINTED ON 36"x24")

**REFERENCE NOTES:**

- 1 PICO CONTROL SWITCHES, 2 PER ROOM. PROGRAM PROJECTION SCREEN ROW AND REMAINING FIXTURES SEPARATELY.
- 2 WIRELESS DIMMING CONTROL RELAY. MOUNT ON TOP OF FIXTURE AT FEED END AND CONNECT. SEE DETAILS.
- 3 WIRELESS OCCUPANCY/VACANCY SENSOR, 2 PER ROOM. PROGRAM AS VACANCY SENSOR.
- 4 CONNECT FIXTURES IN THIS AREA TO EXISTING CIRCUITRY AND SWITCHING.
- 5 PROVIDE BLANK PLATE OVER (E) FIXTURE OPENING.
- 6 PATCH CEILING WHERE FIXTURES WERE REMOVED.
- 7 SEE TYPICAL CLASSROOM WIRING EXAMPLE THIS SHEET.
- 8 INSTALLED PROGRAM PHOTO SENSOR FOR DAYLIGHT HARVESTING.
- 9 TYPICAL CLASSROOM WIRING SHOWN IN THIS ROOM.
- 10 CONNECT FIXTURES TO NEW MOTION SENSOR AND PROGRAM.
- 11 WIRELESS DIMMING CONTROL RELAY. MOUNT ON END OF SURFACE FIXTURE OR ABOVE LAY-IN CEILING. EXTEND 0-10V WIRING AND SWITCH LEG TO ADJACENT FIXTURES.



SYSTEMS WEST ENGINEERS, INC.  
 4111 High Street  
 Eugene, Oregon 97403-2427  
 541.342.7210  
 systemswestengineers.com

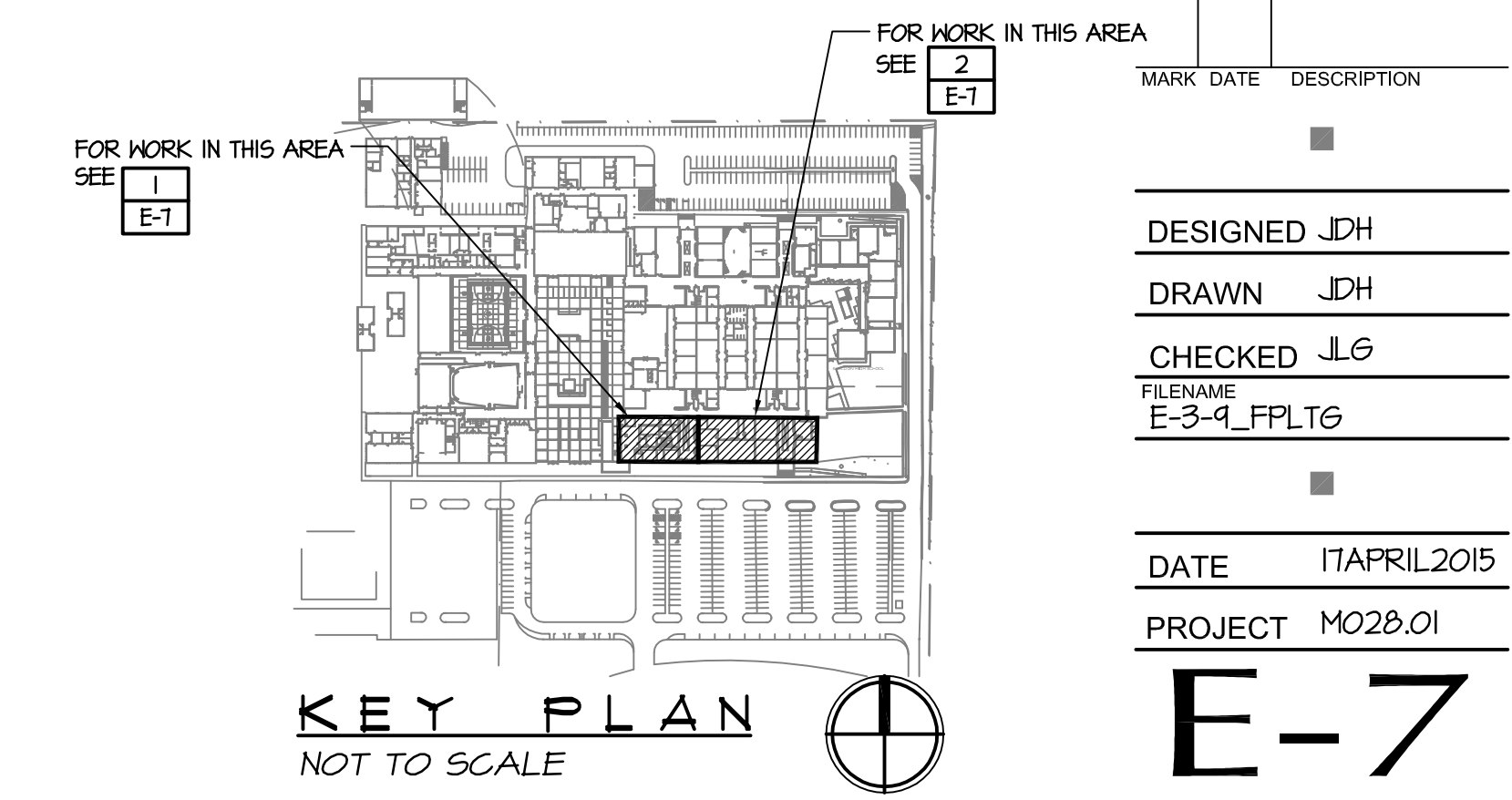


LIGHTING  
 REPLACEMENT/  
 ENERGY UPGRADE

MULTI-SCHOOL  
 SITES

LOCATION:  
 200 N. Monroe St.  
 Eugene, Oregon  
 OWNER:  
 EUGENE SCHOOL  
 DISTRICT 4J

PARTIAL FLOOR  
 SHELDON HIGH  
 SCHOOL  
 LIGHTING  
 PLANS



**KEY PLAN**  
 NOT TO SCALE

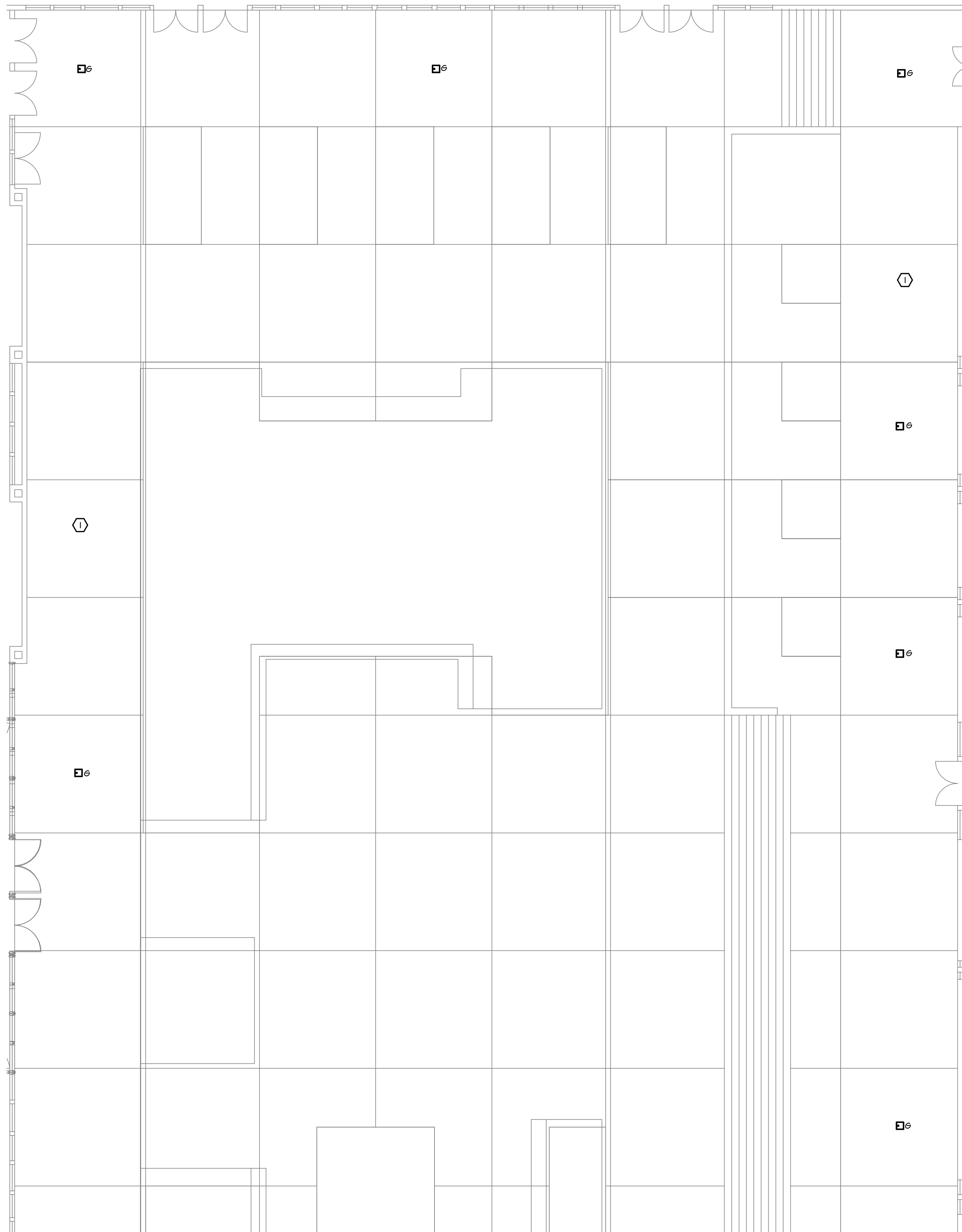
MARK	DATE	DESCRIPTION
1		
2		

DESIGNED JDH  
 DRAWN JDH  
 CHECKED JLG  
 FILENAME  
 E-3-4\_FPLTG

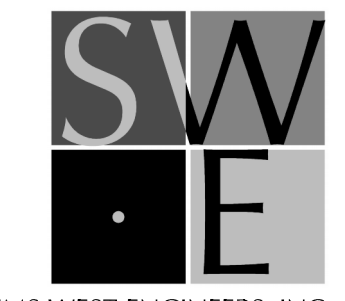
DATE 17APRIL2015  
 PROJECT M02B.01

**E-7**  
 SHT 8 OF 11

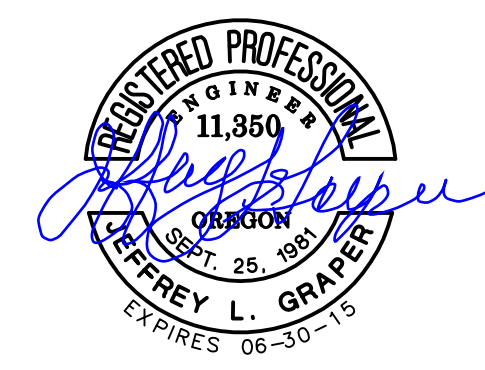




REFERENCE NOTES:  
⬡ CONNECT FIXTURES IN THIS AREA TO EXISTING CIRCUITRY AND SWITCHING.



SYSTEMS WEST ENGINEERS, INC.  
411 High Street  
Eugene, Oregon 97401-2427  
541.342.2210  
systemswestengineers.com

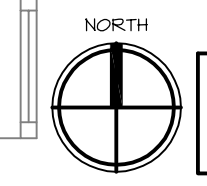


LIGHTING  
REPLACEMENT/  
ENERGY UPGRADE

MULTI-SCHOOL  
SITES

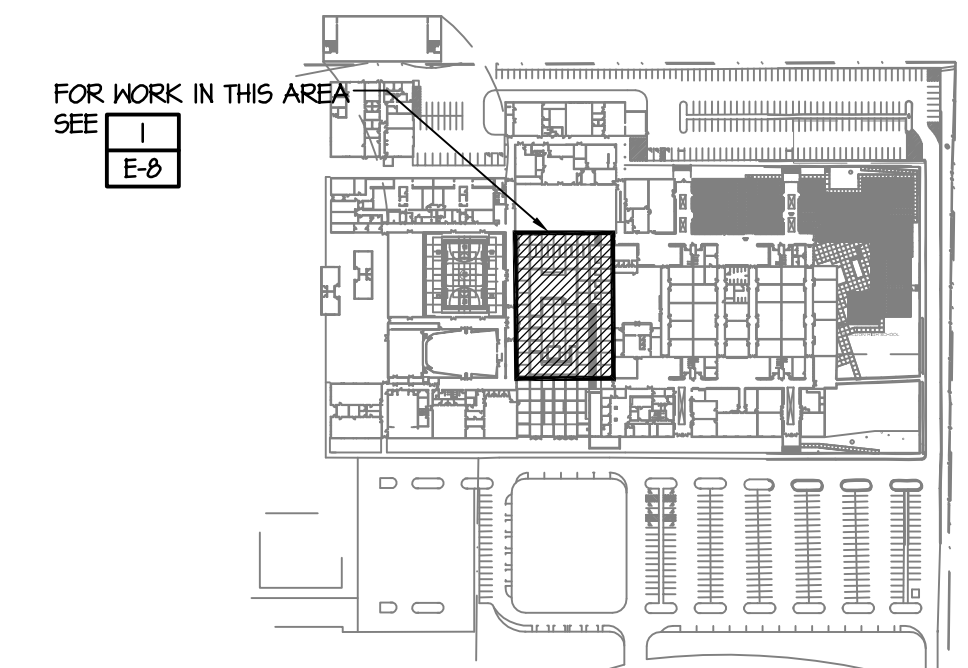
LOCATION:  
200 N. Monroe St.  
Eugene, Oregon

OWNER:  
EUGENE SCHOOL  
DISTRICT 4J



**1 PARTIAL FLOOR SHELDON HIGH SCHOOL LIGHTING PLAN**  
SCALE: 1/8" = 1'-0" (PRINTED ON 36"x24")

PARTIAL FLOOR  
SHELDON HIGH  
SCHOOL  
LIGHTING  
PLAN



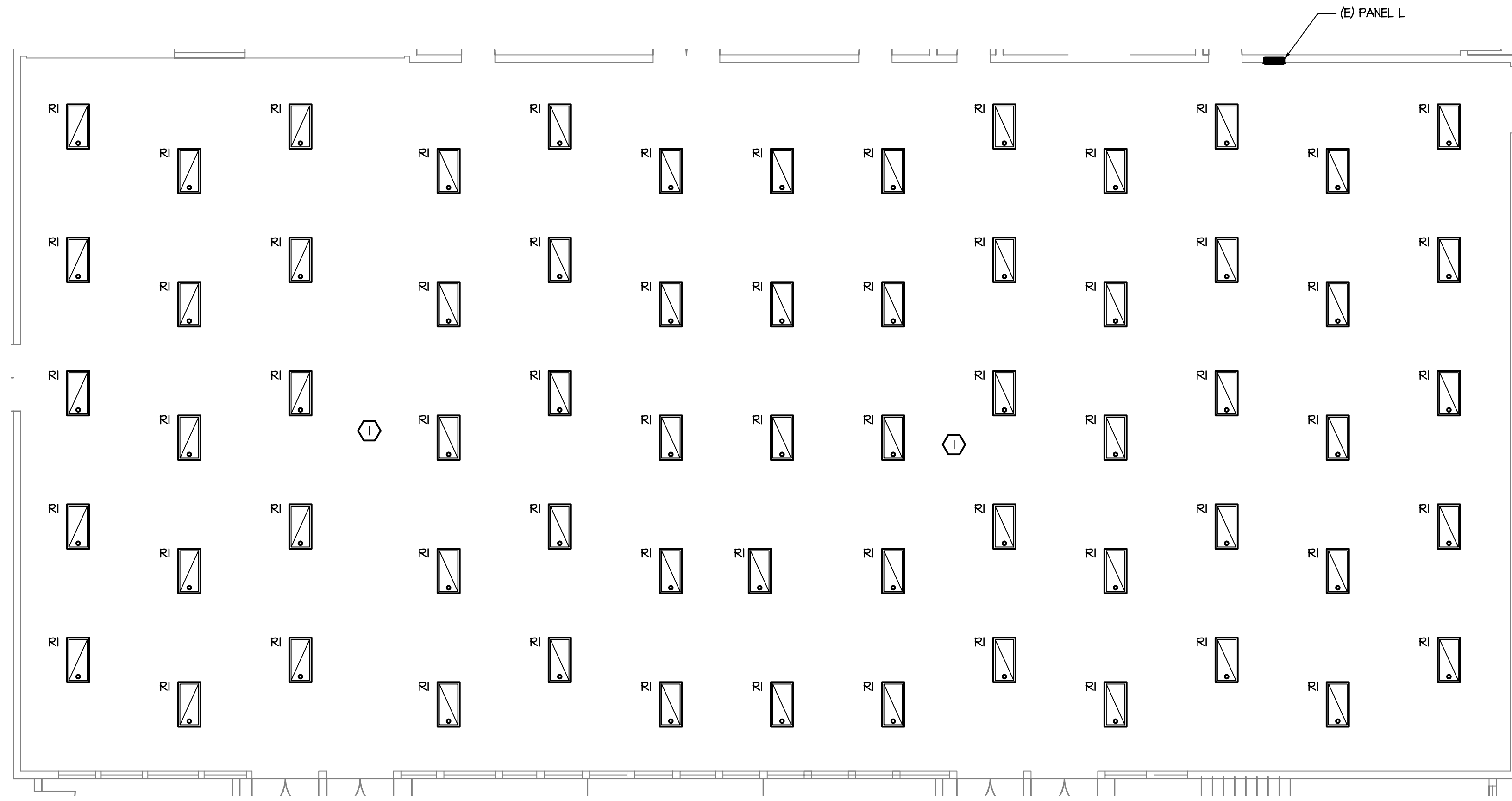
**KEY PLAN**  
NOT TO SCALE

MARK	DATE	DESCRIPTION
■		

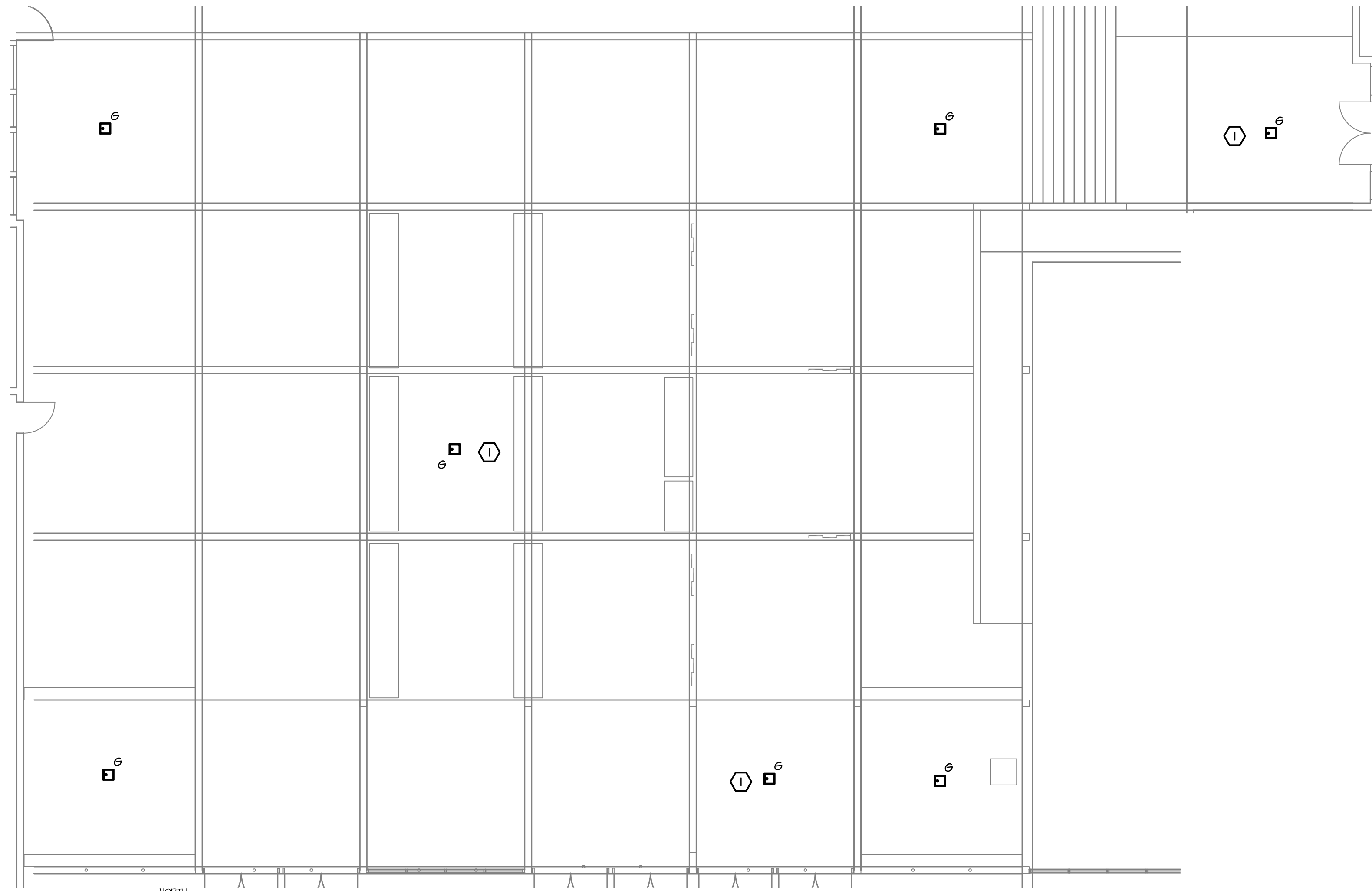
DESIGNED JDH  
 DRAWN JDH  
 CHECKED JLG  
 FILENAME  
 E-3-4\_FPLT6

DATE 17APRIL2015  
 PROJECT M02B.01

**E-8**  
SHT 4 OF 11



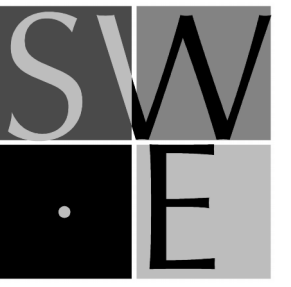
**1 PARTIAL FLOOR SHELDON HIGH SCHOOL LIGHTING PLAN**  
 SCALE: 1/8" = 1'-0" (PRINTED ON 36"x24")



**2 PARTIAL FLOOR SHELDON HIGH SCHOOL LIGHTING PLAN**  
 SCALE: 1/8" = 1'-0" (PRINTED ON 36"x24")

**REFERENCE NOTES:**

① CONNECT FIXTURES IN THIS AREA TO EXISTING CIRCUITRY AND SWITCHING.



SYSTEMS WEST ENGINEERS, INC.  
 411 High Street  
 Eugene, Oregon 97401-2427  
 541.342.7210  
 systemswestengineers.com

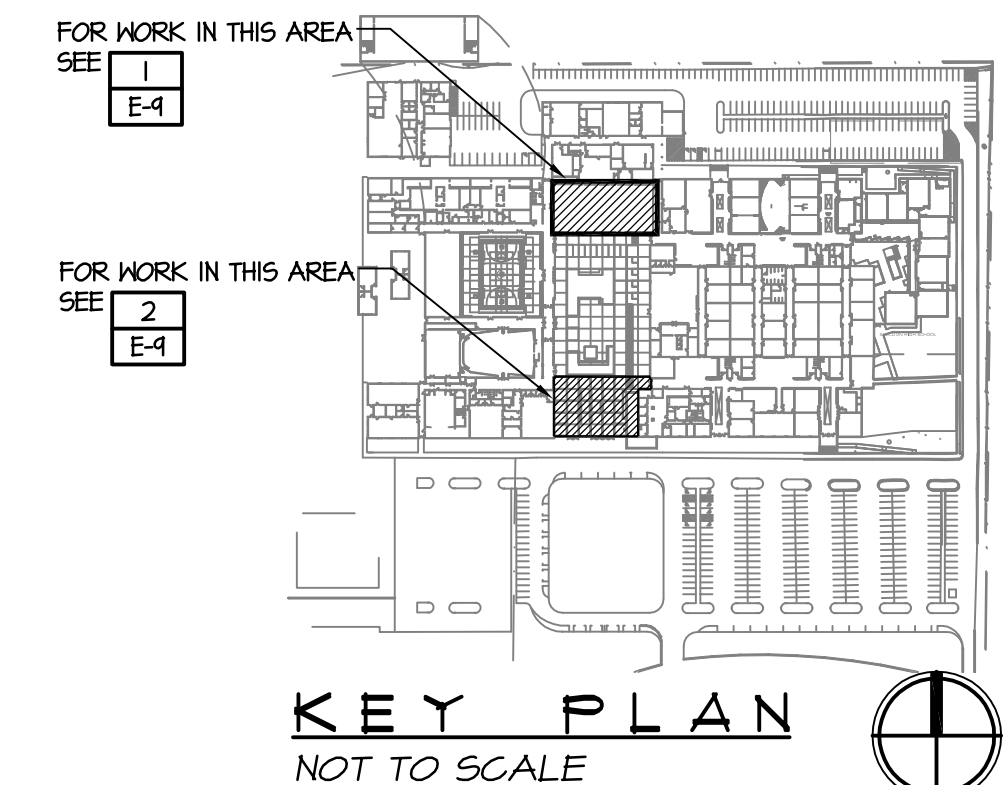


LIGHTING  
 REPLACEMENT/  
 ENERGY UPGRADE

MULTI-SCHOOL  
 SITES

LOCATION:  
 200 N. Monroe St.  
 Eugene, Oregon  
 OWNER:  
 EUGENE SCHOOL  
 DISTRICT 4J

PARTIAL FLOOR  
 SHELDON HIGH  
 SCHOOL  
 LIGHTING  
 PLAN

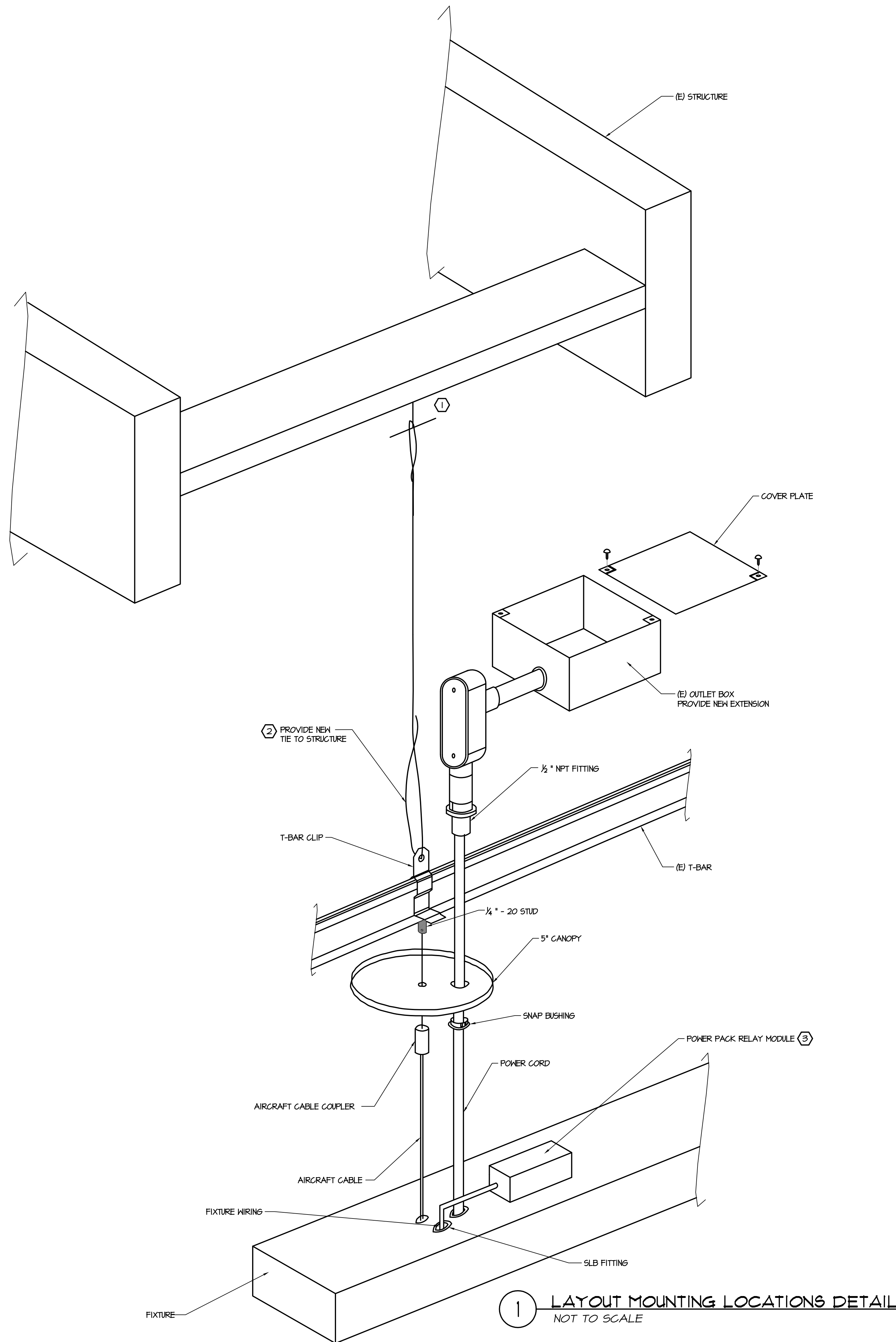


**KEY PLAN**  
 NOT TO SCALE

MARK	DATE	DESCRIPTION
DESIGNED	JDH	
DRAWN	JDH	
CHECKED	JLG	
FILENAME	E-3-4_FPLT6	
DATE	17APRIL2015	
PROJECT	M02B.01	

**E-9**  
 SHT 10 OF 11

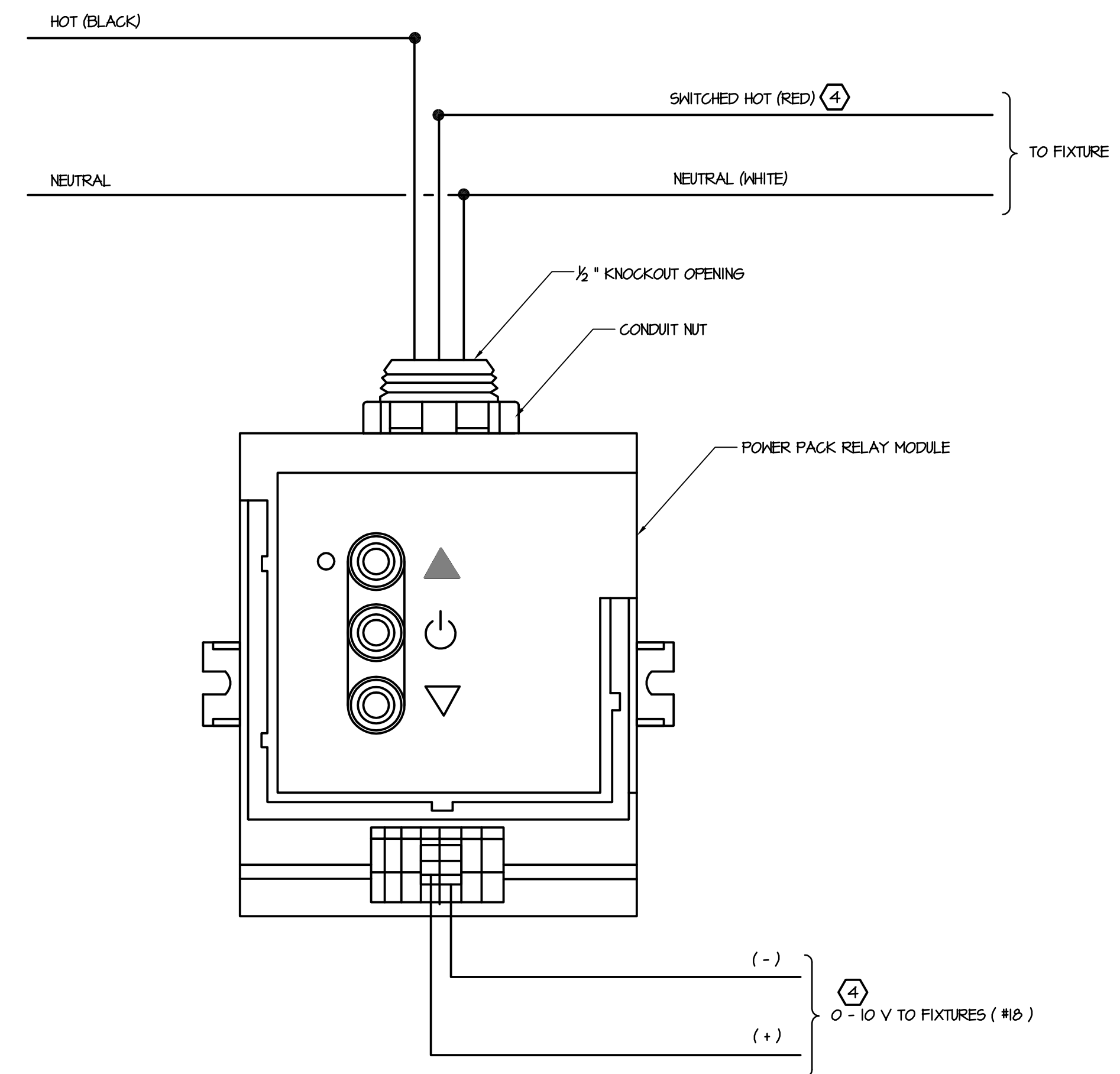




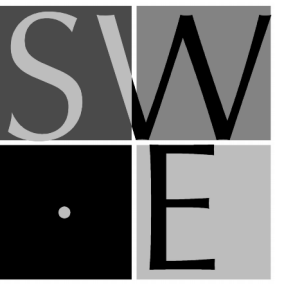
1 LAYOUT MOUNTING LOCATIONS DETAIL  
NOT TO SCALE

REFERENCE NOTES:

- ① WHERE FIXTURES DO NOT ALIGN WITH (E) STRUCTURE, PROVIDE 2x4 BLOCKING. SEE UNIT PRICE #1.
- ② (1) PER FIXTURE IN CONTINUOUS ROWS OR (2) PER INDIVIDUAL FIXTURES.
- ③ (1) PER FIXTURE OR FIXTURES IN CONTINUOUS ROWS.
- ④ EXTEND TO ADJACENT FIXTURES WHERE NOT IN CONTINUOUS ROWS - SEE PLANS.



2 WIRING DIAGRAM  
NOT TO SCALE



SYSTEMS WEST ENGINEERS, INC.  
411 High Street  
Eugene, Oregon 97401-2427  
541.342.7210  
systemswestengineers.com



LIGHTING  
REPLACEMENT/  
ENERGY UPGRADE

MULTI-SCHOOL  
SITES

LOCATION:  
200 N. Monroe St.  
Eugene, Oregon

OWNER:  
EUGENE SCHOOL  
DISTRICT 4J

LIGHTING  
DETAILS

MARK	DATE	DESCRIPTION

DESIGNED JDH  
DRAWN JDH  
CHECKED JLG  
FILENAME  
E-10\_DTLTG

DATE 17APRIL2015  
PROJECT M02B.01

E-10  
SHT 11 OF 11