

THE DOCUMENT AND THE IDEAS AND DESIGNS INCORPORATED HEREIN ARE THE PROPERTY OF RODD HANSEN ARCHITECT, L.L.C. AND IS NOT TO BE USED, IN WHOLE OR PART, FOR ANY OTHER PROJECT WITHOUT THE WRITTEN AUTHORIZATION OF RODD HANSEN ARCHITECT, L.L.C.

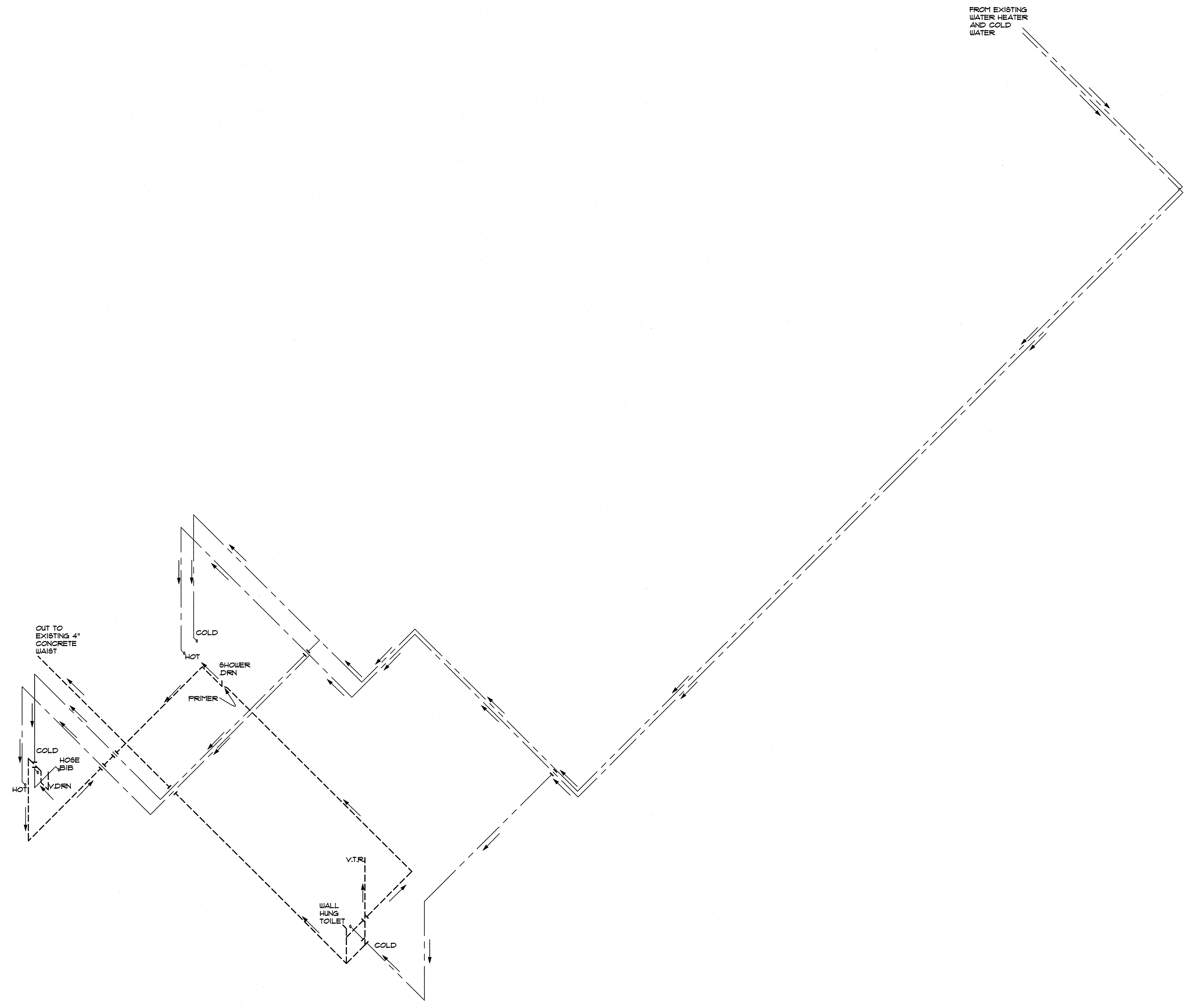
RODD HANSEN ARCHITECT, L.L.C.
 1551 Oak Street, Suite A
 Eugene, Oregon 97401
 Phone: (541) 268-1800
 Fax: (541) 687-1200
 E-Mail: rodd@rhaarchitectural.com

EUGENE SCHOOL DISTRICT 4J:
ADAMS ELEMENTARY SCHOOL RESTROOM ADDITION
 950 W. 22nd
 EUGENE, OR 97405

TITLE:	FIRST FLOOR PLUMBING PLAN
JOB#:	1148.07212014
DRAWN BY:	JSR
ISSUE DATE:	10-22-2014
SCALE:	1/2" = 1'-0"

P3.1

FROM EXISTING WATER HEATER AND COLD WATER



FIRST FLOOR PLUMBING PLAN
 SCALE: 1/2" = 1'-0"