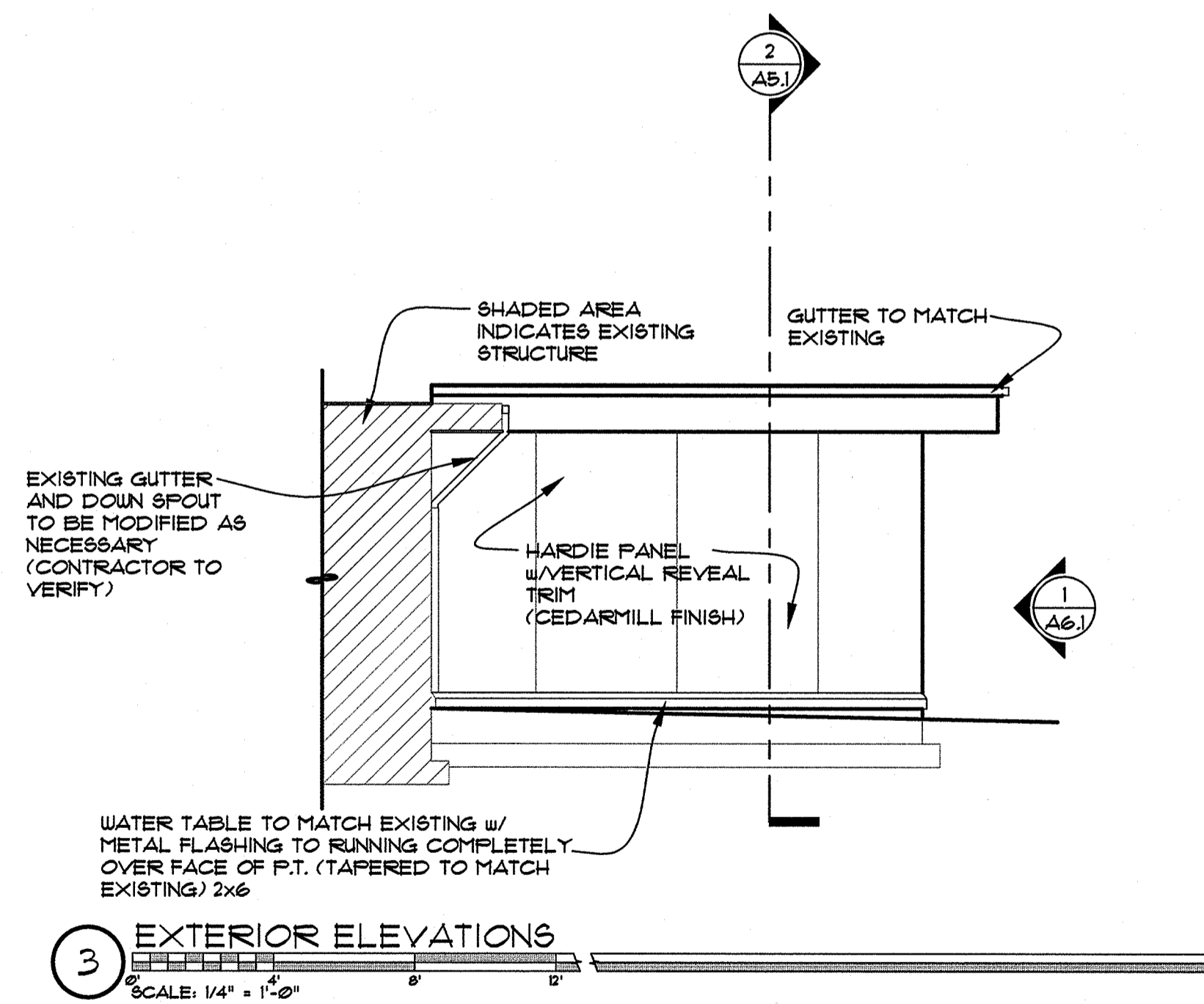
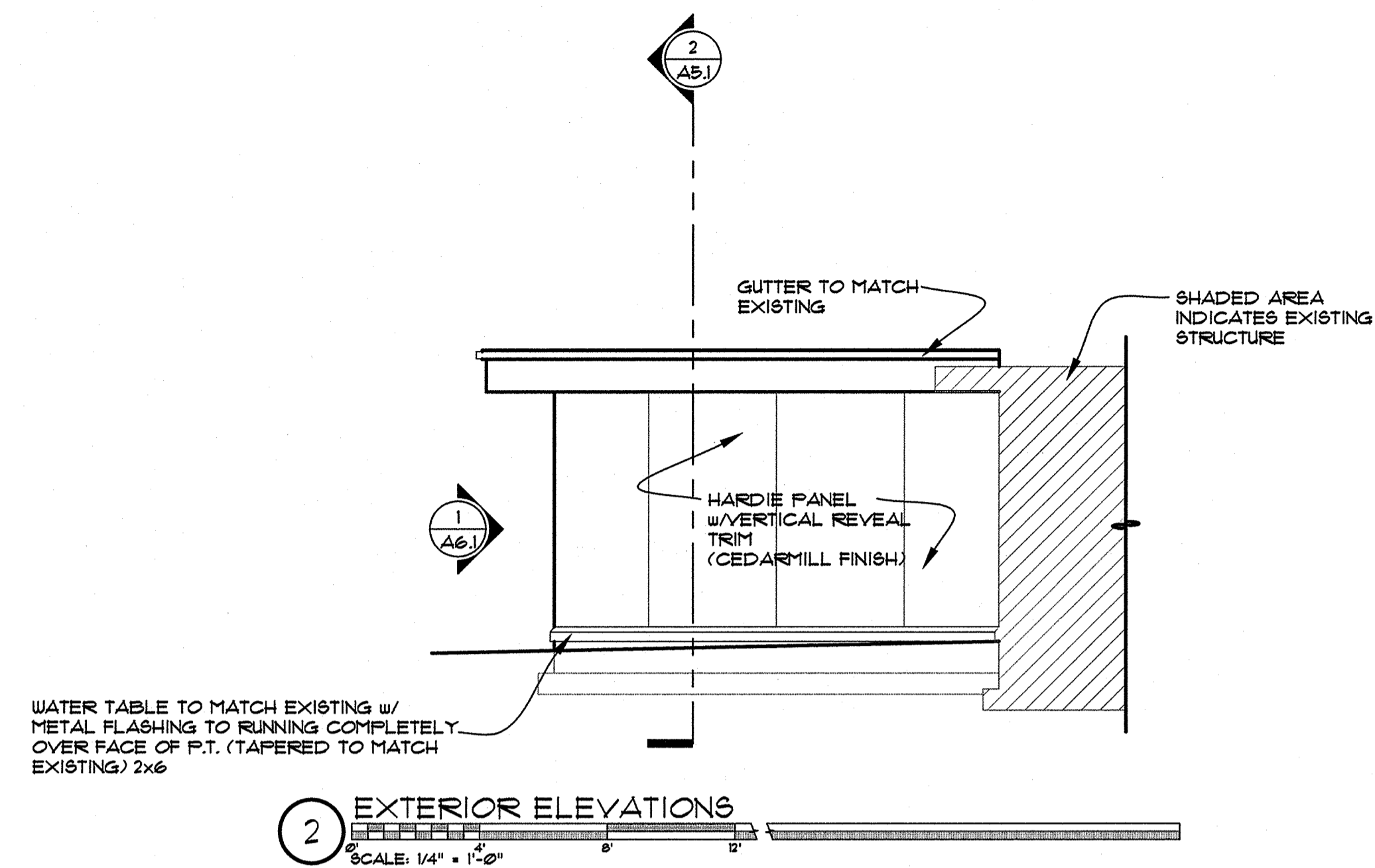
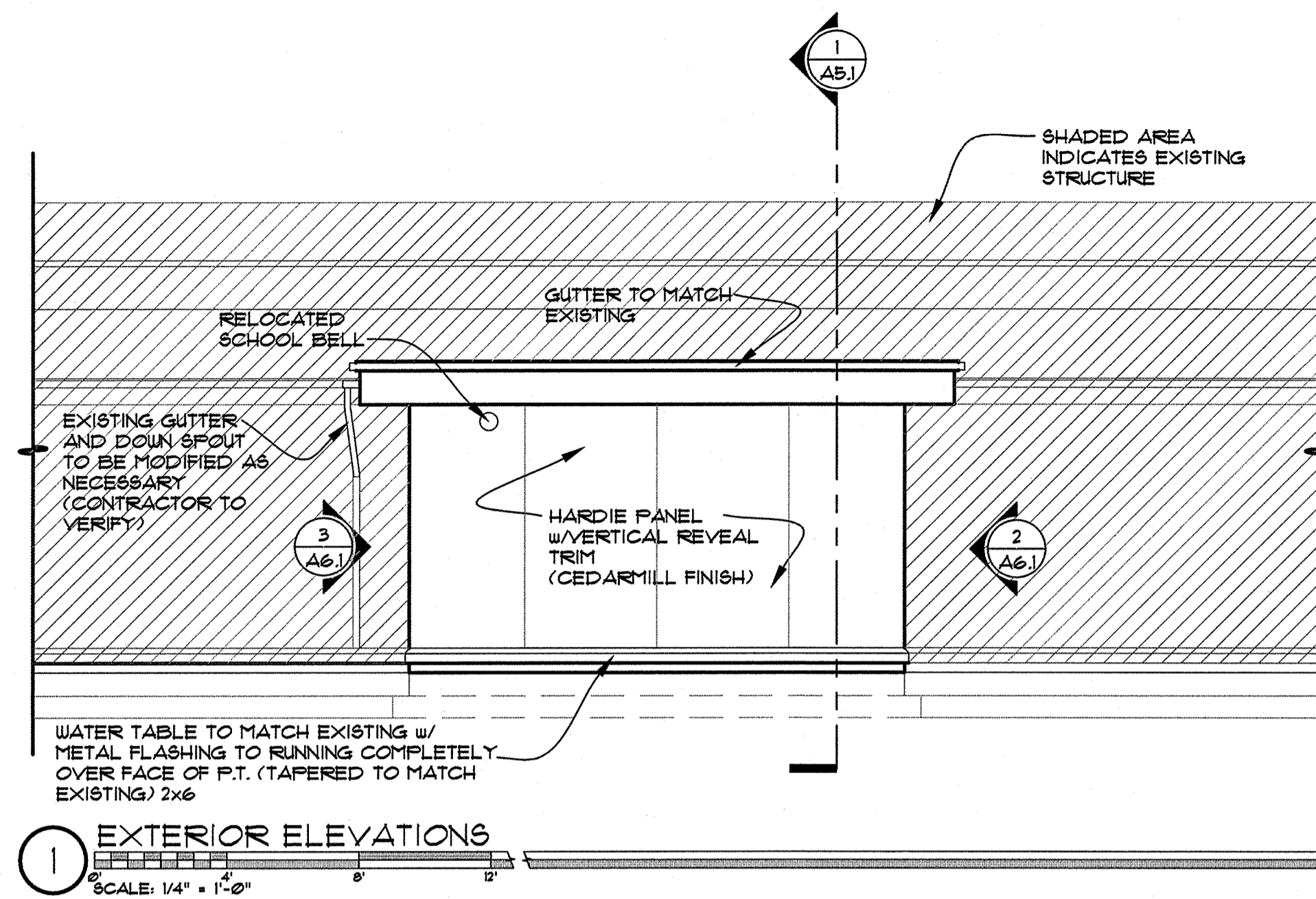


THE DOCUMENT AND THE IDEAS AND DESIGNS INCORPORATED HEREIN ARE THE PROPERTY OF RODD HANSEN ARCHITECT, L.L.C. AND IS NOT TO BE USED, IN WHOLE OR PART, FOR ANY OTHER PROJECT WITHOUT THE WRITTEN AUTHORIZATION OF RODD HANSEN ARCHITECT, L.L.C.

RODD HANSEN ARCHITECT, L.L.C.
 155 Oak Street, Suite 4
 Eugene, Oregon 97401
 Phone: (541) 681-1800
 Fax: (541) 681-1200
 E-Mail: rodd@rhaarchitectural.com



EUGENE SCHOOL DISTRICT 4J:

ADAMS ELEMENTARY SCHOOL
 RESTROOM ADDITION

950 W. 22nd
 EUGENE, OR 97405

EXTERIOR
 TITLE: ELEVATIONS

JOB#: 1148.07212014

DRAWN BY: JSR

△ --

ISSUE DATE: 10-22-2014

SCALE: 0/0" = 0'-0"

