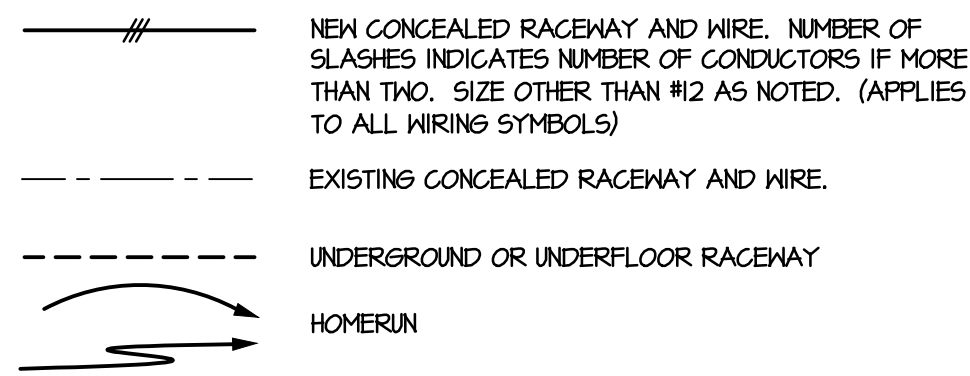


SYMBOLS AND ABBREVIATIONS LEGEND

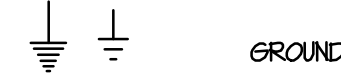
LOW-VOLTAGE ELECTRICAL CONDUCTORS & CABLES



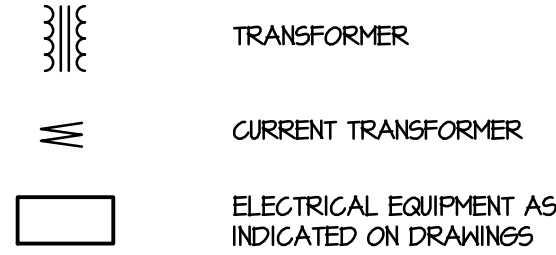
GENERAL



GROUNDING & BONDING FOR ELECTRICAL SYSTEMS



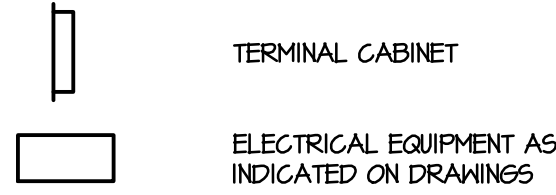
LOW-VOLTAGE DISTRIBUTION



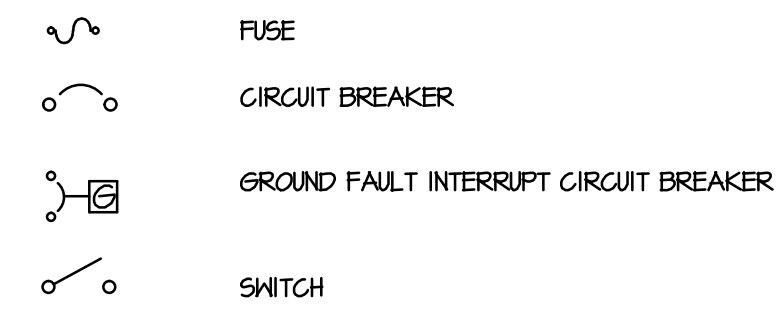
PANELBOARDS



ELECTRICAL CABINETS & ENCLOSURES



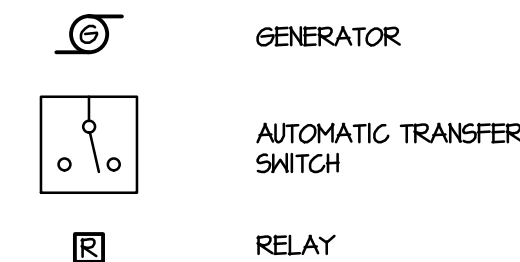
OVER-CURRENT PROTECTIVE DEVICES



ELECTRICITY METERING



STANDBY GENERATION SYSTEM



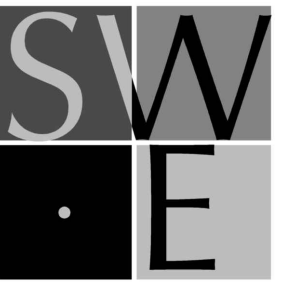
AFF	ABOVE FINISHED FLOOR	IDF	INTERMEDIATE DISTRIBUTION FRAME
BLDG	BLDG	L.V.	LOW VOLTAGE
C	CONDUIT	MDF	MAIN DISTRIBUTION FRAME
cd	CANDELA	MECH	MECHANICAL
CKT	CIRCUIT	(N)	NEW
DM	0-10V DIMMING	PNL	PANEL
DSP	DIGITAL SIGNAL PROCESSOR	PRS	PROGRAM RAPID START
(E)	EXISTING	SKBD	SWITCHBOARD
ELEG	ELECTRICAL	TTB	TELEPHONE TERMINAL BOARD
EMERG	EMERGENCY	TVSS	TRANSIENT VOLTAGE SURGE SUPPRESSION
FAM	FIRE ALARM MASTER	TYP	TYPICAL
GFI	GROUND FAULT INTERRUPTER	WG	WIREGUARD
GND	GROUND	WP	WEATHERPROOF
HVAC	HEATING, VENTILATING, & AIR CONDITIONING		

GENERAL NOTES:

1. THE FACILITY WILL REMAIN IN OPERATION DURING CONSTRUCTION. COORDINATE ALL SHUTDOWNS AND CONSTRUCTION ACTIVITY WITH FACILITIES STAFF.
2. SIZE AND LOCATION OF ALL EXISTING ELECTRICAL EQUIPMENT IS APPROXIMATE. CONTRACTOR SHALL SITE VERIFY THE EXACT LOCATION OF EXISTING AND CONSTRUCT ALL WORK FROM FIELD DIMENSIONS. CONTRACTOR SHALL MAKE ADJUSTMENTS NECESSARY TO ACCOMMODATE MINOR DEVIATIONS AT NO COST TO OWNER.
3. LIGHT LINE WORK INDICATES EXISTING ELECTRICAL CIRCUITRY AND OTHER ELECTRICAL EQUIPMENT. DASHED LINE WORK INDICATES ELECTRICAL DEVICES AND EQUIPMENT TO BE REMOVED.
4. WHERE EXISTING EQUIPMENT IS REMOVED AND NOT REPLACED IN THE SAME LOCATION, PATCH AND PAINT SURFACES TO MATCH ORIGINAL CONDITION.
5. REMOVE ALL ABANDONED RACEWAY AND WIRING.
6. RECONNECT ALL CIRCUITRY TO REMAINING DEVICES AND EQUIPMENT.
7. REMOVE ALL COMMUNICATIONS/DATA CABLING.
8. PROVIDE BLANK FACE PLATES FOR ALL SWITCHES AND COMMUNICATIONS/DATA BEING REMOVED.
9. WHERE ALL LOAD IS REMOVED FROM A BREAKER PROVIDE NEW TYPED PANEL SCHEDULE IDENTIFYING BREAKER AS "SPARE"

REFERENCE NOTES:

- ① EXTEND (2) EXISTING CIRCUITS TO EXISTING LIGHTING AND RECONNECT.
- ② PROVIDE NEW CONDUCTORS TO UTILITY CO. METER. COORDINATE WITH UTILITY CO.
- ③ PANEL 6 IS OWNER FURNISHED / CONTRACTOR INSTALLED EQUIPMENT. PANEL CONTAINS (2) 10/3, (1) 50/2, (1) 15/3, AND (12) 20/1 BRANCH BREAKERS.



SYSTEMS WEST ENGINEERS, INC.
411 High Street
Eugene, Oregon 97401-2427
541-342-7210
systemswestengineers.com



EDGEWOOD
ELEMENTARY
SCHOOL

EDGEWOOD
ELEMENTARY
SWITCHBOARD
REPLACEMENT
PROJECT

LOCATION:
577 East 46th Avenue
EUGENE, OREGON

OWNER:
EUGENE SCHOOL
DISTRICT 4J

LEGEND,
GENERAL NOTES
&
ELECTRICAL
DEMOLITION
PLAN

MARK	DATE	DESCRIPTION

DESIGNED JDH

DRAWN JDH

CHECKED JLG

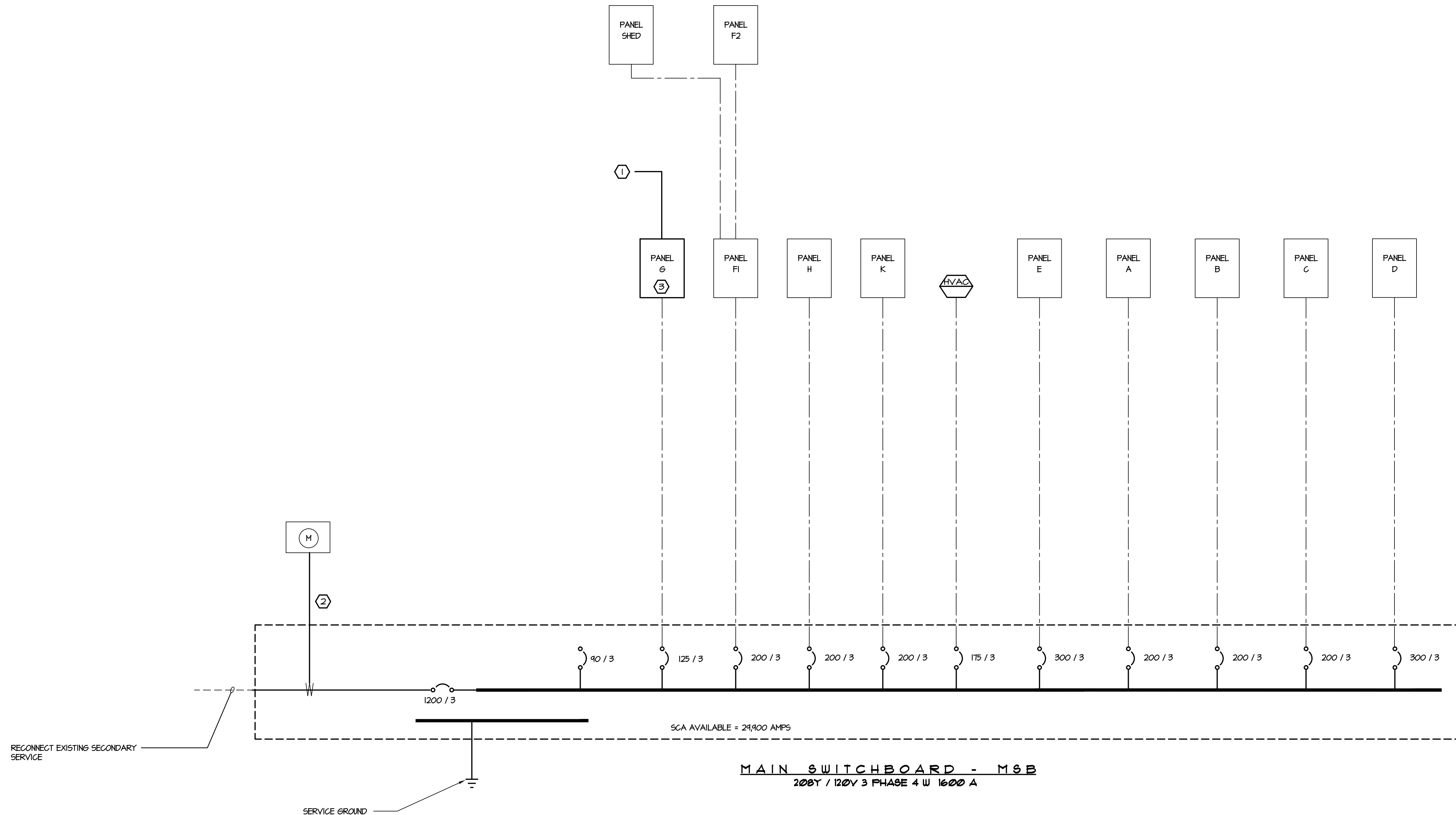
FILENAME
E-101_L6DP

DATE 17JUNE14

PROJECT M02B.02

E-101

SHT 2 OF 3



MAIN SWITCHBOARD - MSB
200Y / 120V 3 PHASE 4 W 1600 A