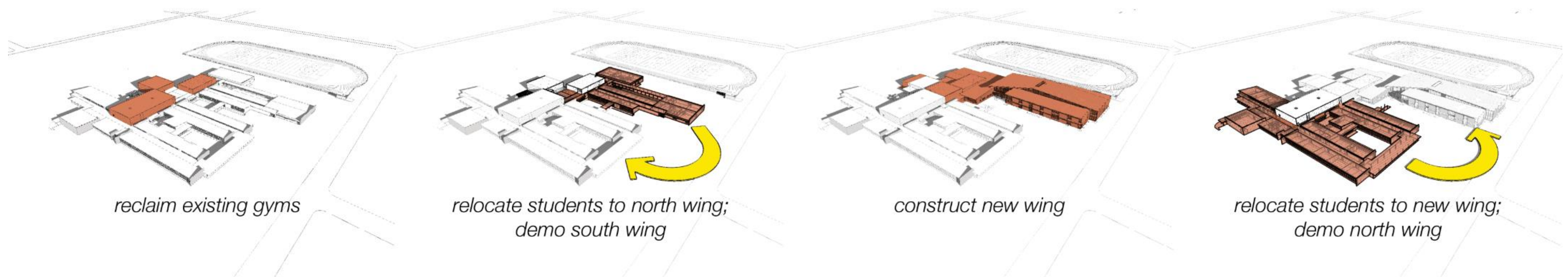
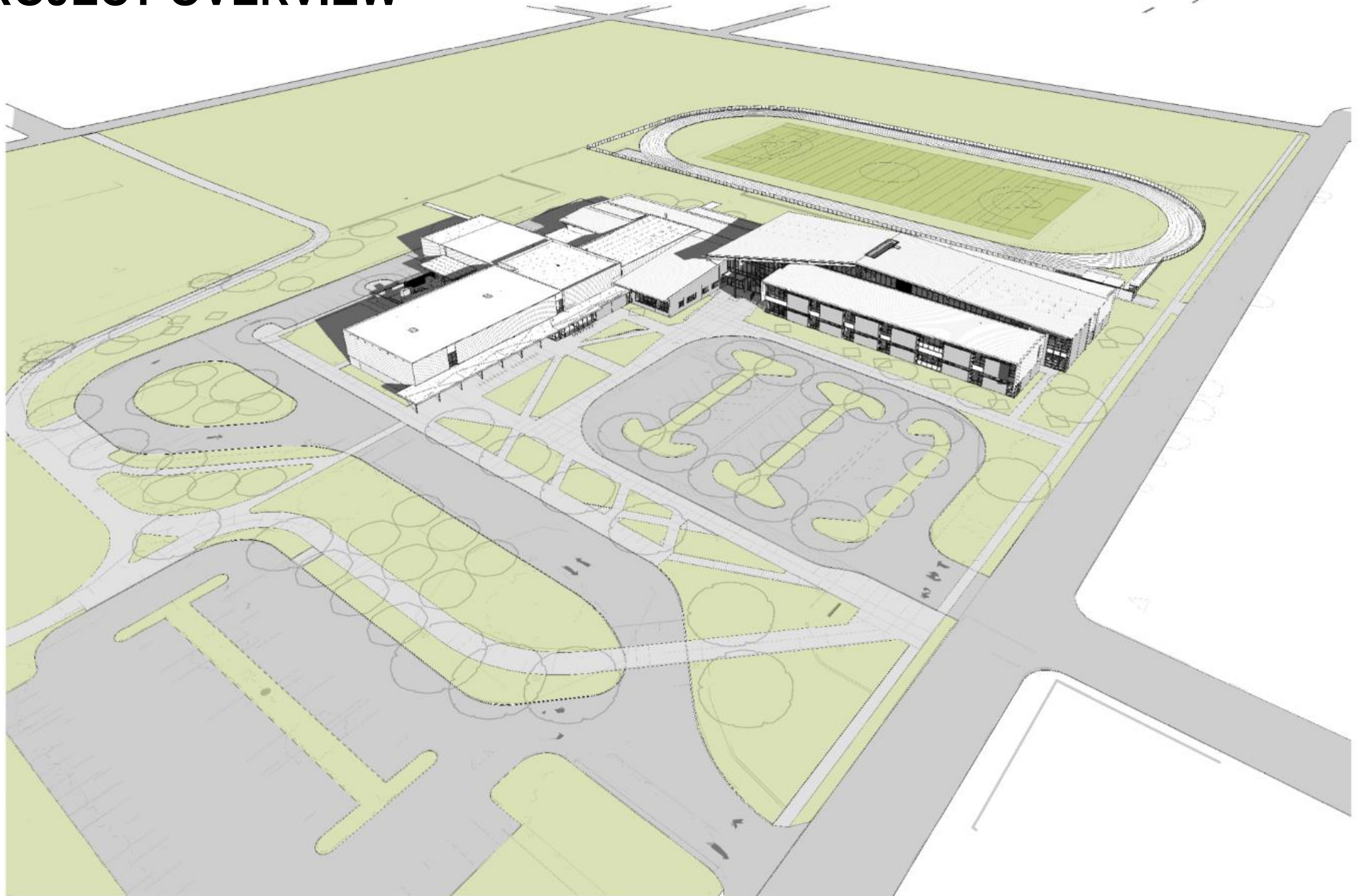
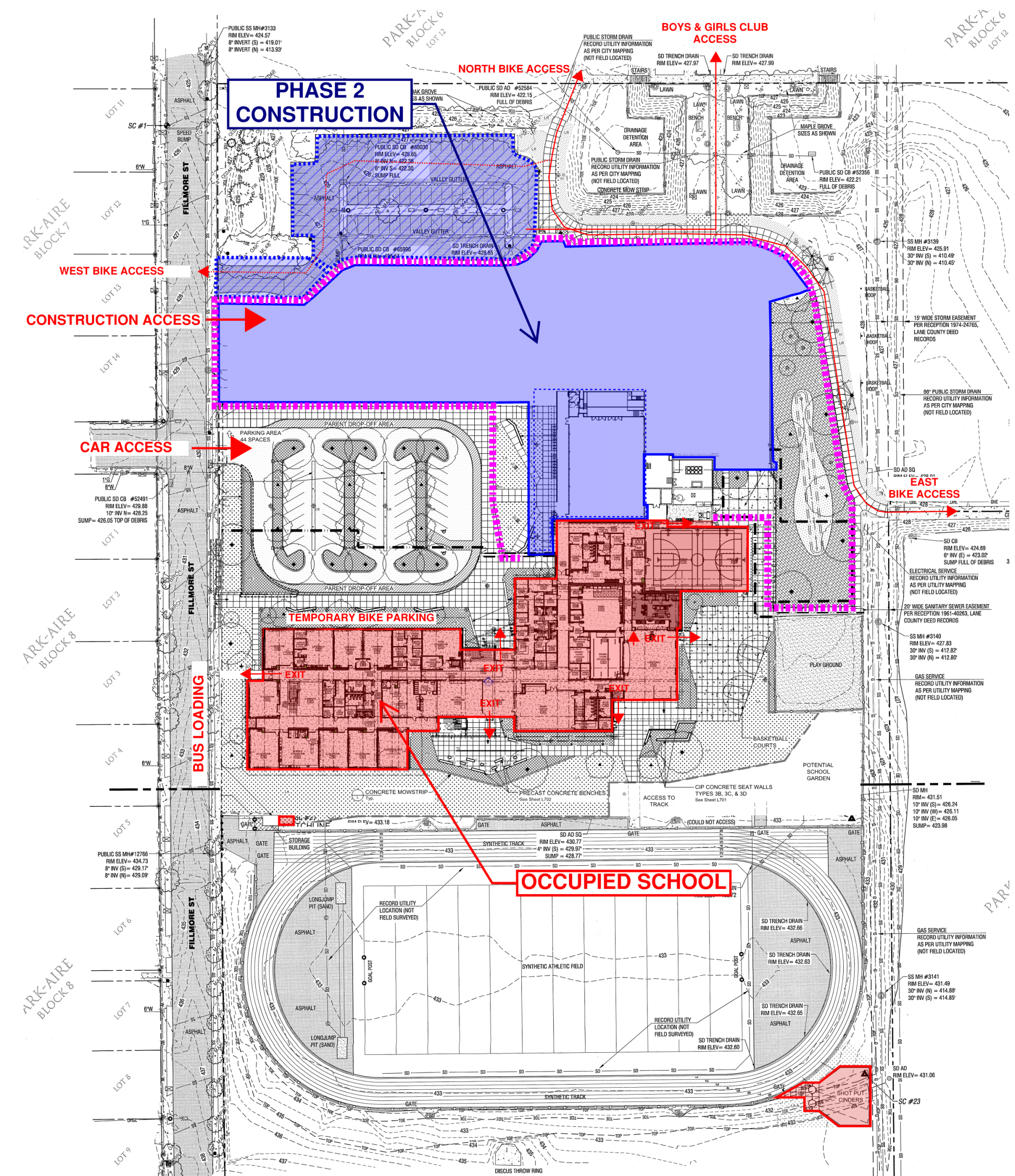
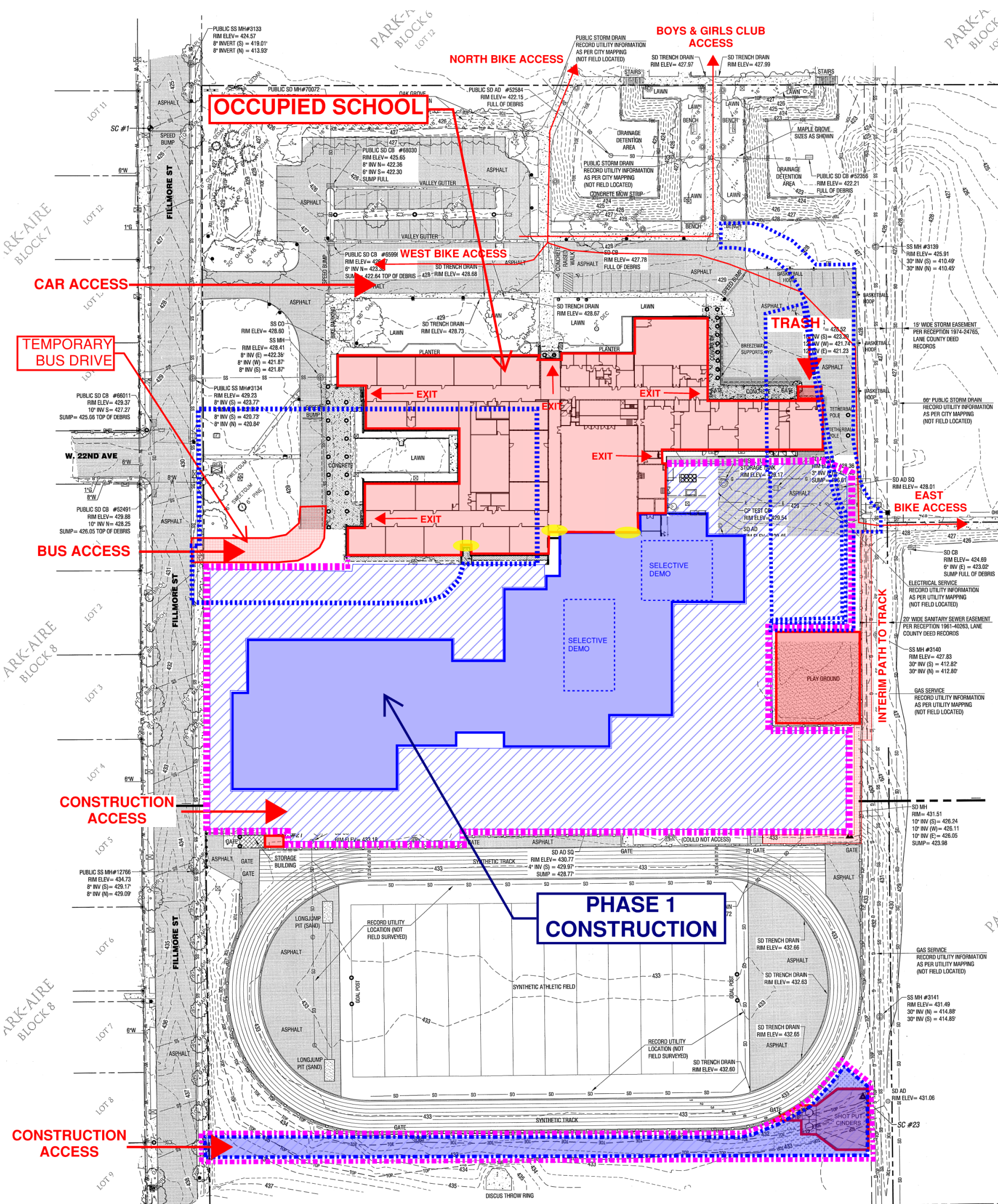


# PROJECT OVERVIEW



# PHASED CONSTRUCTION



**Phase 1 Construction:** March 2016 – August 2017  
 (Completed for September 2017)

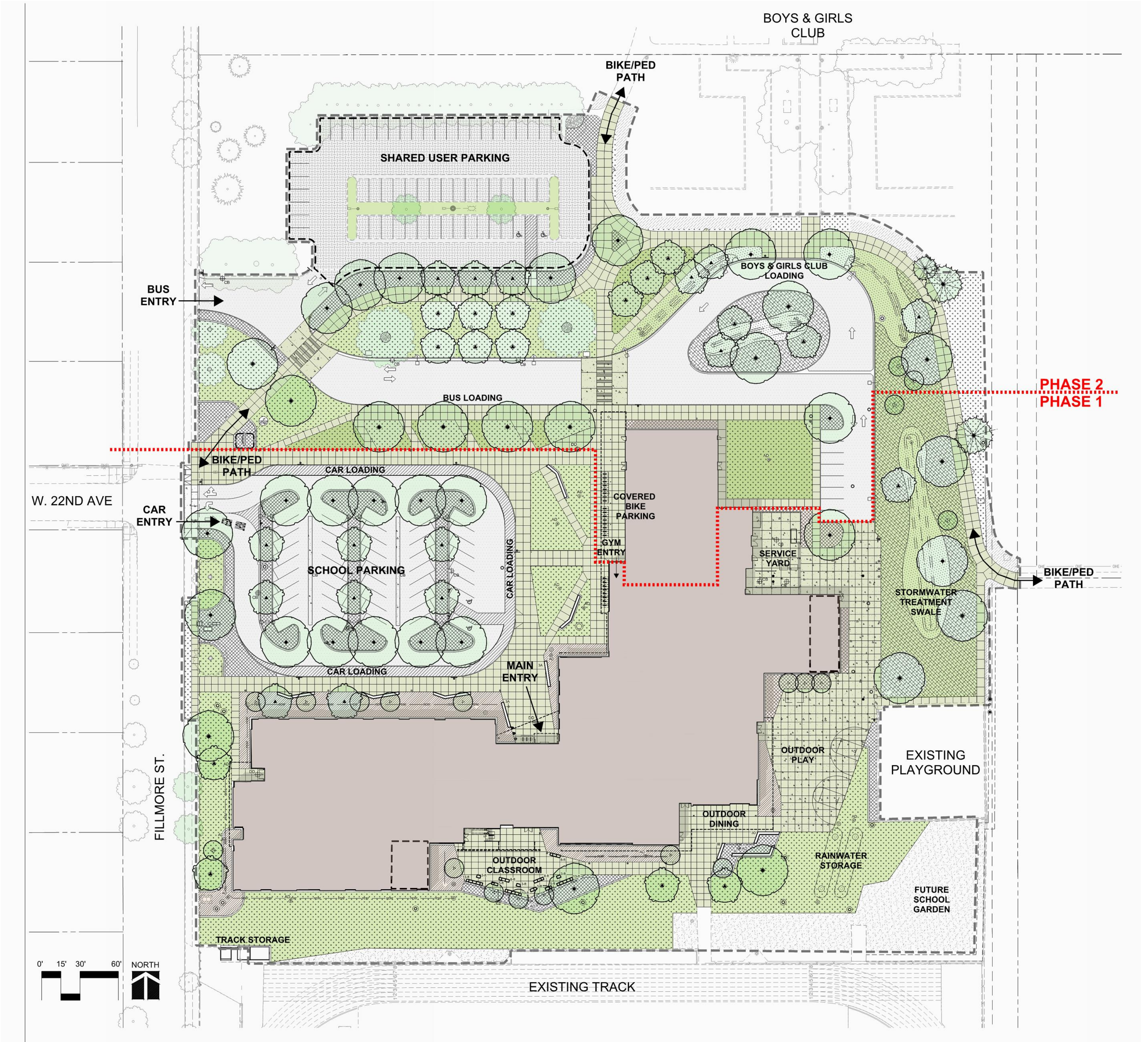
**Phase 2 Construction:** August 2017 – September 2017  
 (Completed for October 2017)



opsis architecture<sup>LLP</sup>

**4J – ATA REBUILD**

# SITE PLAN





**2<sup>ND</sup> FLOOR PLAN** 0' 15' 30' NORTH



**1<sup>ST</sup> FLOOR PLAN** 0' 15' 30' NORTH



VIEW FROM NORTH



VIEW FROM TRACK



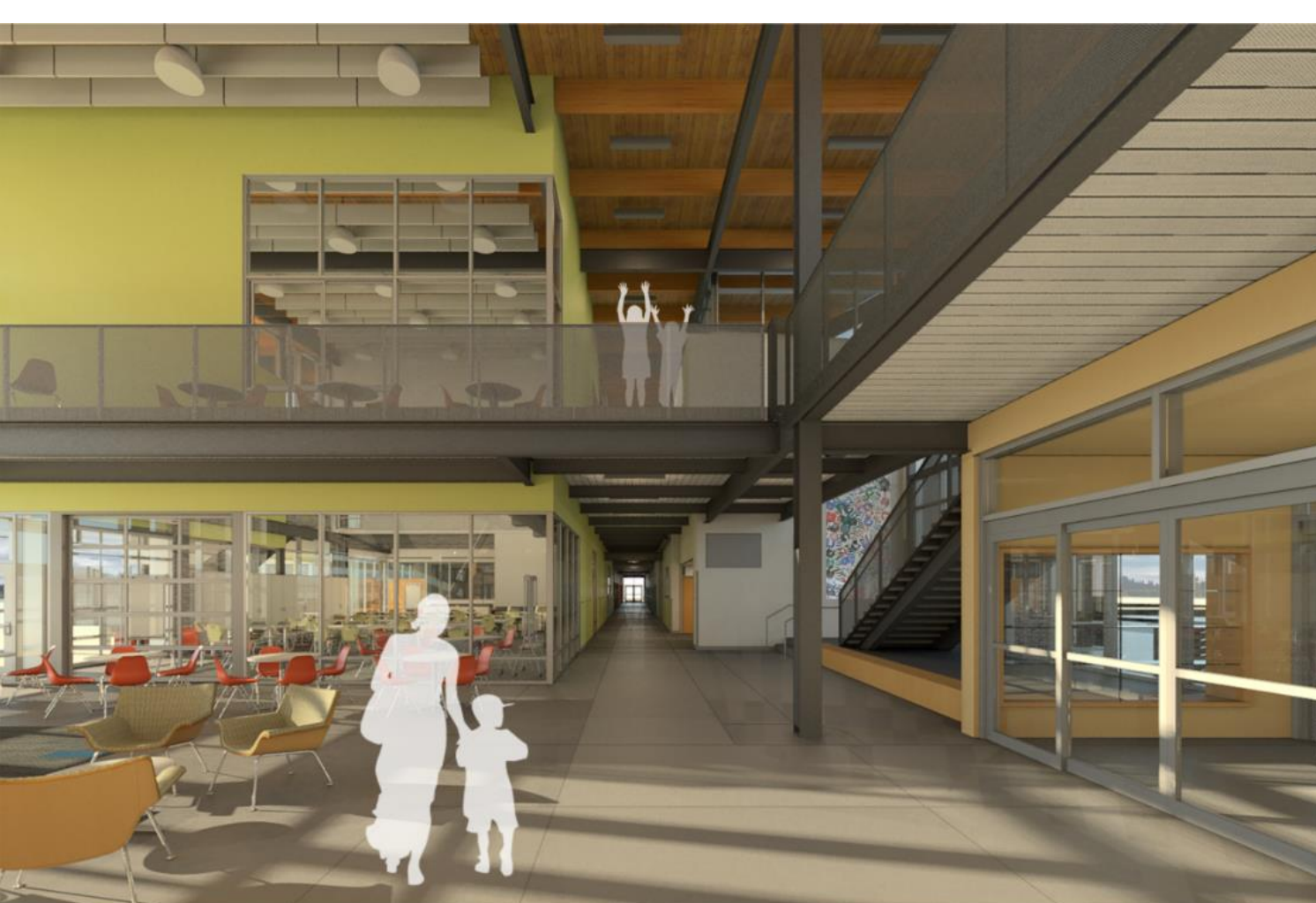
AERIAL VIEW



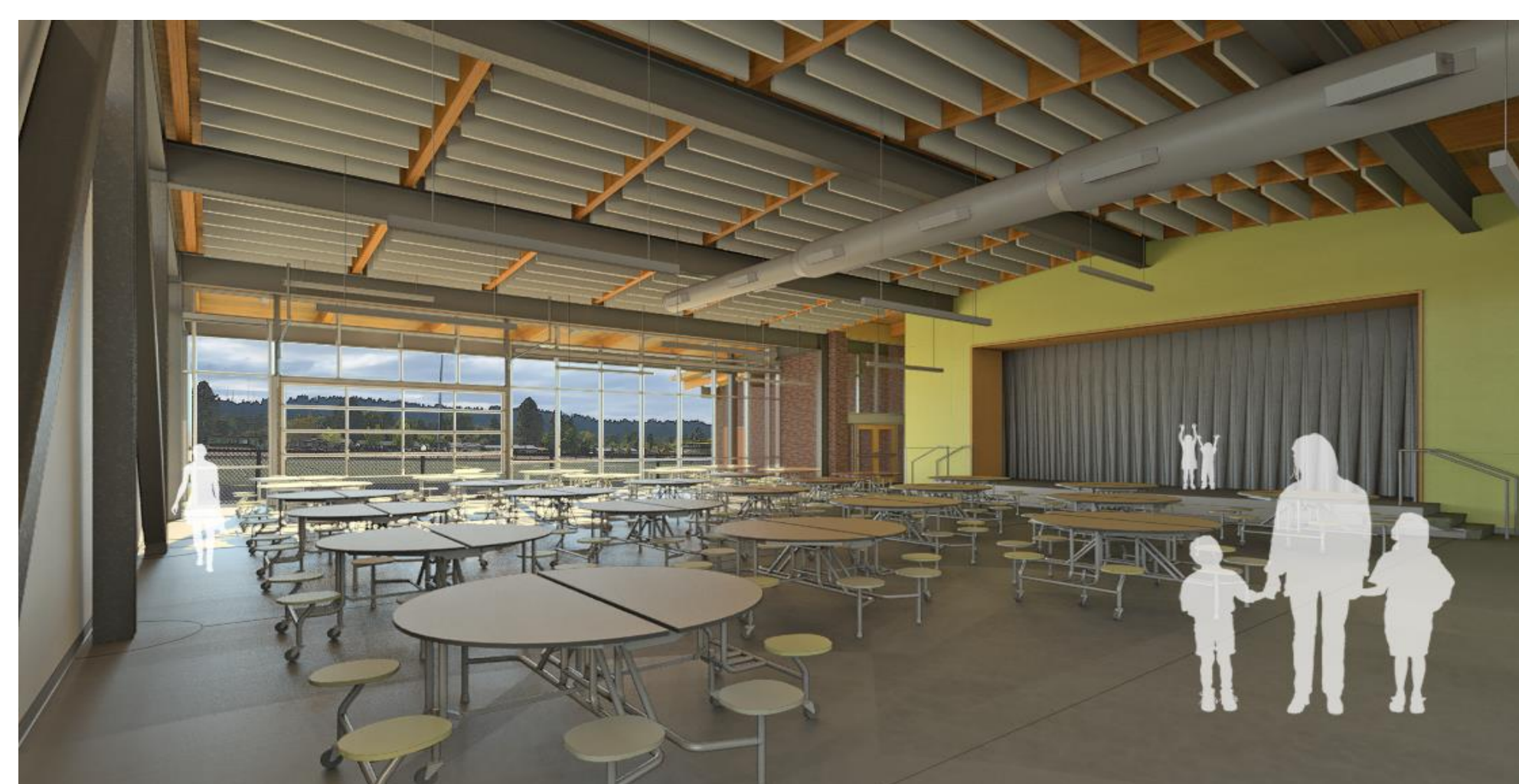
LIVING ROOM



STEM CLASSROOM



MAIN ENTRY AREA



CAFETERIA



ART CLASSROOM