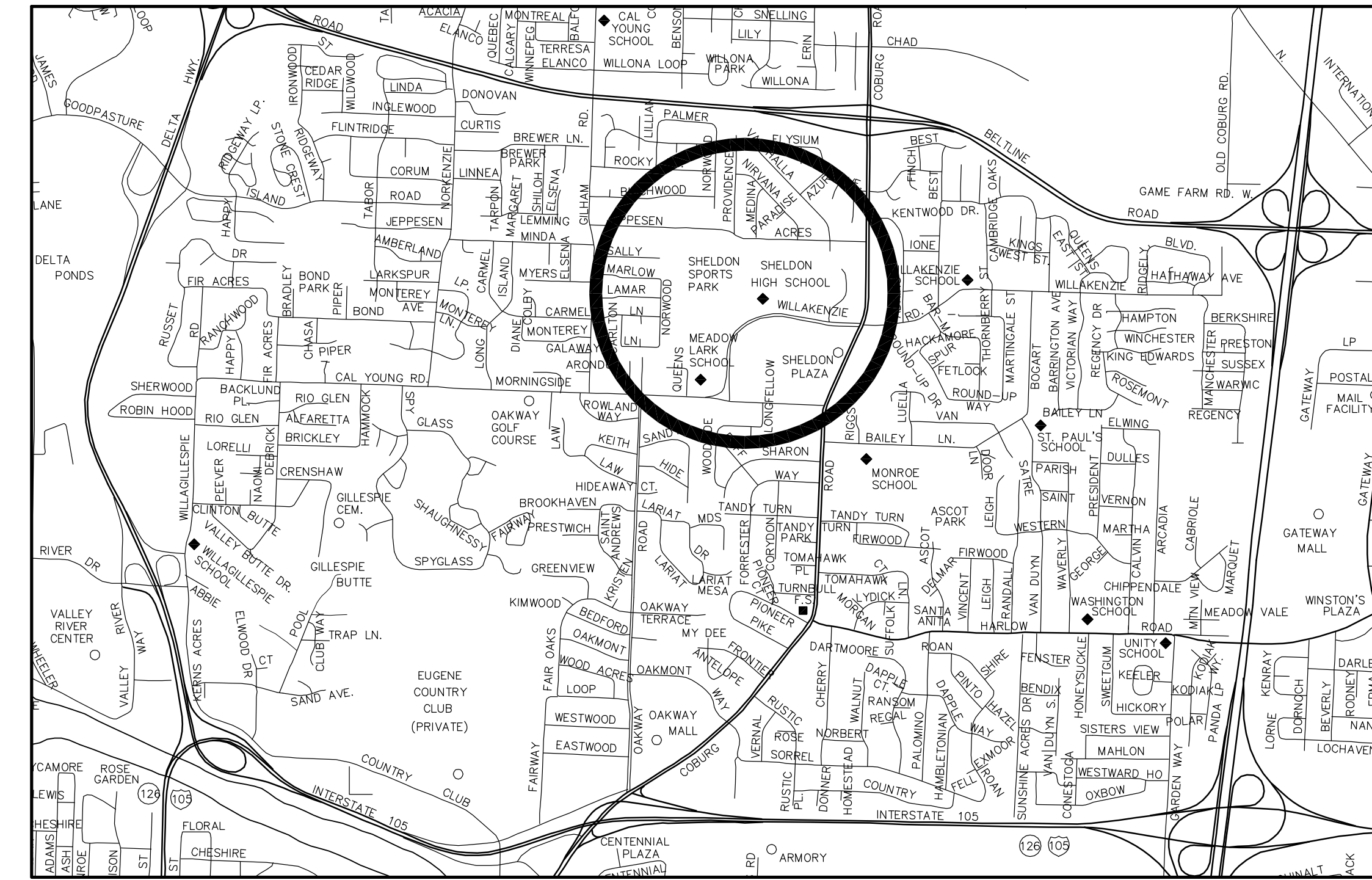


# SHELDON IRRIGATION PUMP AND MAINLINE REPLACEMENT

EUGENE SCHOOL DISTRICT NO. 4J  
PROJECT NUMBER: 420.652.103



VICINITY MAP

## PROPERTY INFORMATION

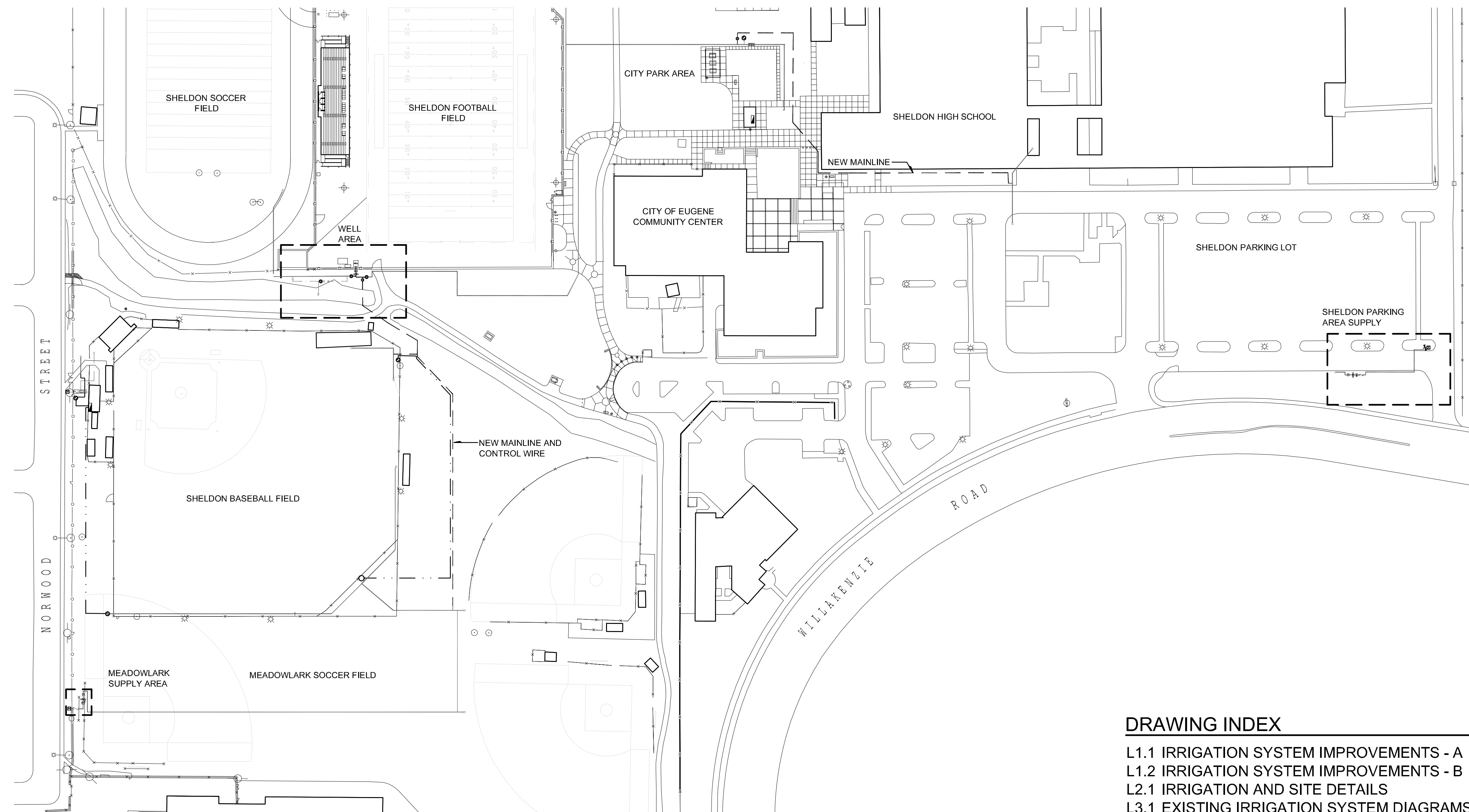
**SITE LOCATION:**  
Sheldon High School  
2455 Willakenzie Road  
Eugene, OR 97401

## OWNER

Eugene School District 4J  
715 West Fourth Avenue  
Eugene, OR 97402  
**CONTACT: KIRK GEBB**  
gebb@4j.lane.edu  
P: (541) 687-3259  
F: (541) 687-4001

## LANDSCAPE ARCHITECT

DLA, INC.  
474 Willamette Street  
Suite 305  
Eugene, OR 97401  
**CONTACT: REX REDMON**  
rexr@dladesign.com  
P: (541) 683-5803  
F: (541) 683-8183



## DRAWING INDEX

- L1.1 IRRIGATION SYSTEM IMPROVEMENTS - A
- L1.2 IRRIGATION SYSTEM IMPROVEMENTS - B
- L2.1 IRRIGATION AND SITE DETAILS
- L3.1 EXISTING IRRIGATION SYSTEM DIAGRAMS



474 Willamette Street  
Suite 305  
Eugene, Oregon 97401

P 541.683.5803

F 541.683.8183

www.DLAdesign.com



Client / Consultant  
Eugene School District 4J

Facilities Management  
715 W. 4th Avenue

Eugene, OR 97402

541-687-3169

**Eugene School District 4J**  
Sheldon Irrigation Pump and Mainline Replacement

Date: 23 APRIL 2014

Drawn By: RR

Checked By: DJD/RR

Submission:  
CONSTRUCTION SET

Revisions


**L0.0**

DLA INC. COPYRIGHT 2014

**GENERAL IRRIGATION NOTES**

- EXISTING IRRIGATION INCLUDING MAINLINE, LATERAL LINES, CONTROL WIRES, SPRINKLERS, VALVES AND OTHER EQUIPMENT IN AREAS OF WORK ARE NOT SHOWN ON THESE DRAWINGS. CONTRACTOR IS RESPONSIBLE FOR LOCATING EXISTING UNDERGROUND IRRIGATION AND UTILITIES PRIOR TO START OF WORK. ANY DAMAGE TO EXISTING EQUIPMENT TO BE REPAIRED AT CONTRACTOR'S EXPENSE.
- EXISTING IRRIGATION SHOWN IS BASED ON INFORMATION PROVIDED BY OTHERS AND IS FOR REFERENCE ONLY. EXACT LOCATIONS AND CONFIGURATIONS IN FIELD MAY VARY. CONTRACTOR IS RESPONSIBLE FOR VERIFYING ALL LOCATIONS. SEE SHEET L3.1 ADDITIONAL PLANS AND RECORD DRAWINGS.
- CONVENE ON-SITE MEETING WITH LANDSCAPE ARCHITECT, IRRIGATION CONTRACTOR AND SCHOOL DISTRICT REPRESENTATIVE PRIOR TO STARTING ANY IRRIGATION WORK AND EACH OF THE FOLLOWING INSPECTIONS OR MEETINGS:
  - FIRE CONSTRUCTION MEETING
  - MAINLINE PRESSURE TEST PRIOR TO BACKFILLING
  - SYSTEM PERFORMANCE TEST
- COORDINATE PARK AREA WORK WITH CITY OF EUGENE STAFF.
- COORDINATE CONTROL SYSTEM WORK AND WIRING WITH 4J MAXICOM CONSULTANT.
- NOTIFY OWNER AND REPAIR DAMAGED EQUIPMENT IMMEDIATELY.
- PROVIDE CONCRETE THRUST BLOCKS AT ALL 4" MAINLINE ELLS, TEES AND CAPS.
- SLEEVING IS NOT SHOWN. PROVIDE SLEEVING BELOW ALL PAVED SURFACES WITH SUFFICIENT CAPACITY FOR IRRIGATION PIPING AND CONTROL WIRES.
- SLEEVING TO BE INSTALLED AT SPECIFIED DEPTH.
- PAVING MAY ONLY BE REMOVED FOR SLEEVING WITH PRIOR APPROVAL. IF PAVING IS REMOVED, CUT AT NEAREST JOINT AND REPLACE COMPLETE PANEL. FINISH TO MATCH EXISTING.
- WHERE PIPING OR EQUIPMENT ARE SHOWN IN PAVING FOR GRAPHIC CLARITY, EQUIPMENT IS TO BE LOCATED IN ADJACENT LANDSCAPE AREAS.
- CONTROL WIRES NOT IMMEDIATELY ADJACENT TO MAINLINE PIPING TO BE INSTALLED IN CONDUIT.
- SEE SHEET L1.2 WELL SYSTEM CONNECTION TO SHELDON FRONT MAINLINE SYSTEM.
- SEE SHEET L1.2 FOR MEADOW/LARK BALL FIELDS WELL CONNECTION AND WATER METER DISCONNECTION PLAN.
- SEE SHEET L1.2 FOR SHELDON HIGH SCHOOL PARKING AREA SUPPLY SYSTEM DISCONNECTION PLAN.
- SEE SHEET L2.1 FOR IRRIGATION, PLANTING AND SITE DETAILS.
- SEE SHEET L3.1 FOR EXISTING IRRIGATION RECORD DRAWINGS AND PLANS.
- SEE SPECIFICATIONS FOR ADDITIONAL IRRIGATION SYSTEM AND RECORD DRAWING REQUIREMENTS.

**EXISTING VEGETATION PROTECTION NOTES**

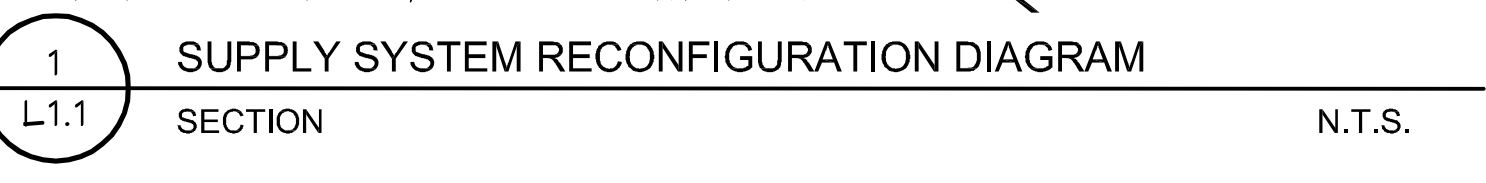
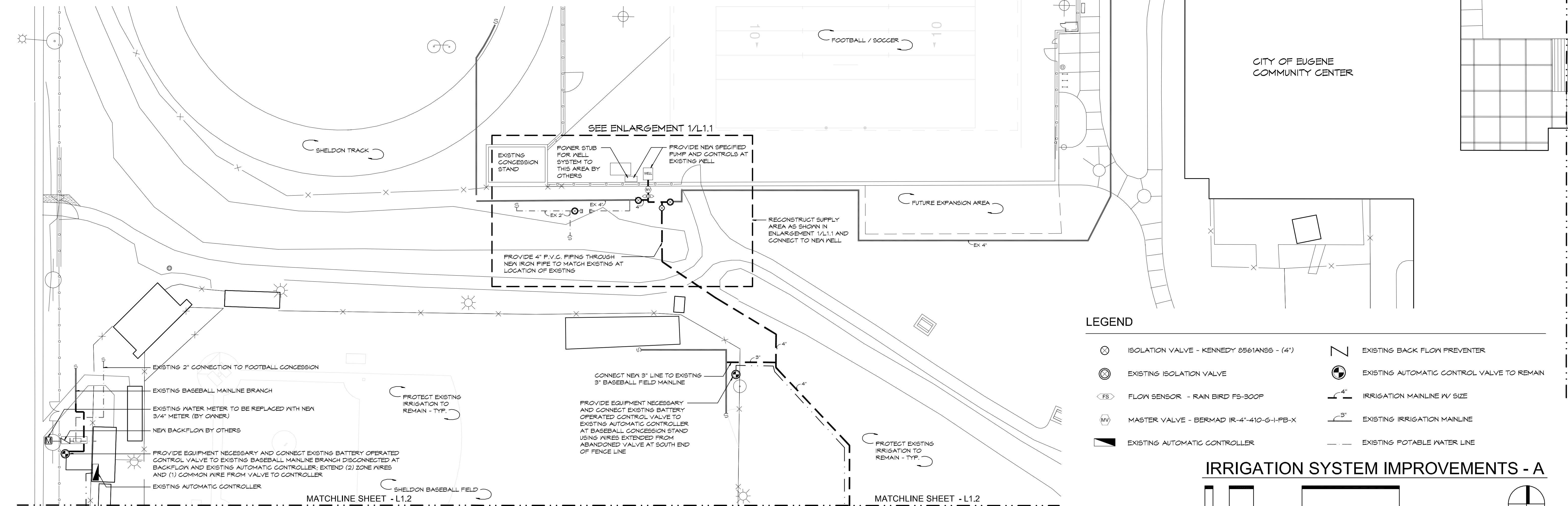
- PROTECT ROOT ZONE AND PLANT STRUCTURE OF ALL EXISTING TREES, SHRUBS AND GROUNDCOVERS TO REMAIN.
- IF PRUNING IS REQUIRED FOR WORK AREA ACCESS, CONSULT WITH OWNER'S AUTHORIZED REPRESENTATIVE PRIOR TO PRUNING.
- HAND TRENCH THROUGH ROOT ZONE OF EXISTING TREES AND SHRUBS TO REMAIN. TUNNEL BELOW SIGNIFICANT ROOTS. CUT NO ROOT LARGER THAN 2" DIAMETER WITHOUT WRITTEN PERMISSION FROM OWNER'S AUTHORIZED REPRESENTATIVE.
- WHERE CONSTRUCTION ACTIVITY DISTURBS EXISTING PLANT MATERIAL IDENTIFIED TO REMAIN, REPLACE PLANTS WITH NEW HEALTHY FULL PLANTS OF IDENTICAL SPECIES AS APPROVED BY OWNER'S AUTHORIZED REPRESENTATIVE.
- BASEBALL AREA SURFACES TO BE RESTORED TO MATCH EXISTING AS APPROVED.
- RESTORE GRADE AND RESEED ALL DISTURBED LAWN AREAS.
- PLANTINGS DAMAGED BY WORK OF THIS CONTRACT TO BE REPLACED AS SPECIFIED.

**EXISTING UTILITY PROTECTION NOTES**

- CONTRACTOR TO CALL FOR UTILITY LOCATE PRIOR TO START OF WORK ON SITE. LOCATE ALL ADJACENT UTILITIES AND OTHER EQUIPMENT PRIOR TO WORK. CONTRACTOR RESPONSIBLE FOR REPAIRING ALL DAMAGE TO EXISTING FACILITIES AND EQUIPMENT AS APPROVED.
- HAND EXCAVATE WITHIN VICINITY OF EXISTING UTILITIES TO REMAIN.
- WHERE CONSTRUCTION ACTIVITY DISTURBS EXISTING UTILITIES REPORT IMMEDIATELY AND REPAIR AS APPROVED BY OWNER'S AUTHORIZED REPRESENTATIVE.
- DO NOT DISABLE WATER SUPPLY TO BUILDING WITHOUT ADVANCE NOTICE AND WRITTEN APPROVAL.

**EXISTING IRRIGATION DISRUPTION NOTES**

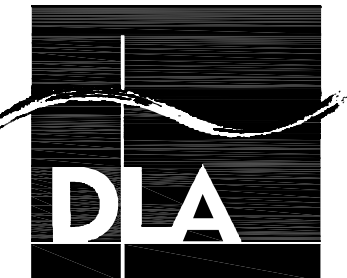
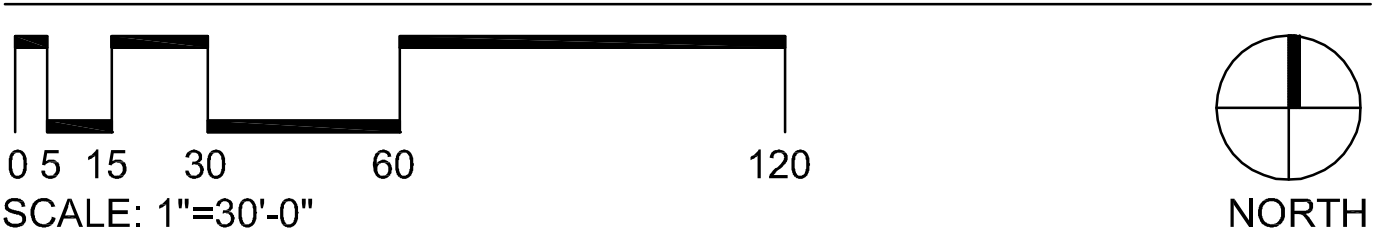
- SEE GENERAL IRRIGATION NOTE #1.
- PROTECT ALL EXISTING IRRIGATION TO REMAIN.
- OWNER IS NOT RESPONSIBLE FOR ACCURACY OR COMPLETENESS OF ANY EXISTING IRRIGATION DOCUMENTATION PROVIDED.
- CONTRACTOR TO COORDINATE DISRUPTION OF EXISTING IRRIGATION WITH OWNER TO ALLOW SATURATION OF EXISTING PLANT MATERIAL PRIOR TO DISRUPTION OF IRRIGATION WATER SUPPLY.
- NO PERIOD OF DISRUPTION OF EXISTING IRRIGATION TO BASEBALL FIELD TO EXCEED 24 HOURS.
- EXCAVATE BY HAND WITHIN AREAS OF EXISTING IRRIGATION PIPING AND CONTROL WIRES TO REMAIN.
- IMMEDIATELY CAP MAINLINE AND LATERAL LINES AFTER CUTTING TO PREVENT CONTAMINATION OF EXISTING SYSTEM DURING PIPE RELOCATION WORK.
- STAKE LOCATION OF, PROTECT AND RESTORE ALL EXISTING IRRIGATION SYSTEM COMPONENTS TO REMAIN.
- ALL REMOVED EQUIPMENT NOT RE-USED TO BE PROVIDED TO OWNER.
- REMOVE ALL ABANDONED SURFACE HARDWARE, VALVE BOXES AND EQUIPMENT TO 18" BELOW GRADE, BACKFILL HOLES AND RESTORE PLANT COVER.
- LABEL WIRES ON BOTH SIDES OF PROPOSED CUT(S) PRIOR TO CUTTING WIRES. CUT WIRES WITH 48" INCH LENGTH OF EXTRA WIRE.
- WIRES TO BE LABELED ACCORDING TO ZONE NUMBER ON BOTH SIDES OF SPLICE(S) WHEN RECONNECTED.
- CONTROL WIRE SPLICES TO BE IN 12" STANDARD VALVE BOX AND WIRES CONNECTED USING SPECIFIED WATERPROOF CONNECTORS.
- CONTRACTOR RESPONSIBLE FOR INSURING THAT ALL EXISTING ZONES OPERATE CORRECTLY UPON RE-CONNECTION OF CONTROL WIRES.
- OPERATE AFFECTED SPRAY ZONES UPON REASSEMBLY OF LATERAL LINES AND CHECK FOR CLOGGED NOZZLES. CLEAN OR REPLACE AS NECESSARY.
- THOROUGHLY FLUSH MAINLINE SYSTEM UPON COMPLETION OF RELOCATION AND RECONNECTION TO ENSURE NO DEBRIS REMAINS.
- HAND WATER EXISTING PLANT MATERIAL AS NECESSARY THROUGH CONSTRUCTION AND REPLACE ANY EXISTING PLANT MATERIAL AFFECTED BY DISRUPTION OF EXISTING IRRIGATION SYSTEM.
- PRESSURE TEST EXISTING SYSTEMS AFTER ANY MAINLINE DISTURBANCE AND RESTORE MAINLINE TO PRE-DISTURBANCE CONDITION.



**LEGEND**

- 

**IRRIGATION SYSTEM IMPROVEMENTS - A**



**DOUGHERTY  
LANDSCAPE  
ARCHITECTS**

474 Willamette Street  
Suite 305  
Eugene, Oregon 97401

P 541.683.5803

F 541.683.8183

www.DLAdesign.com



Client / Consultant

Eugene School District 4J

Facilities Management  
715 W. 4th Avenue

Eugene, OR 97402

541-687-3169

**Eugene School District 4J**  
Sheldon Irrigation Pump and Mainline Replacement

Date: 23 APRIL 2014

Drawn By: RR

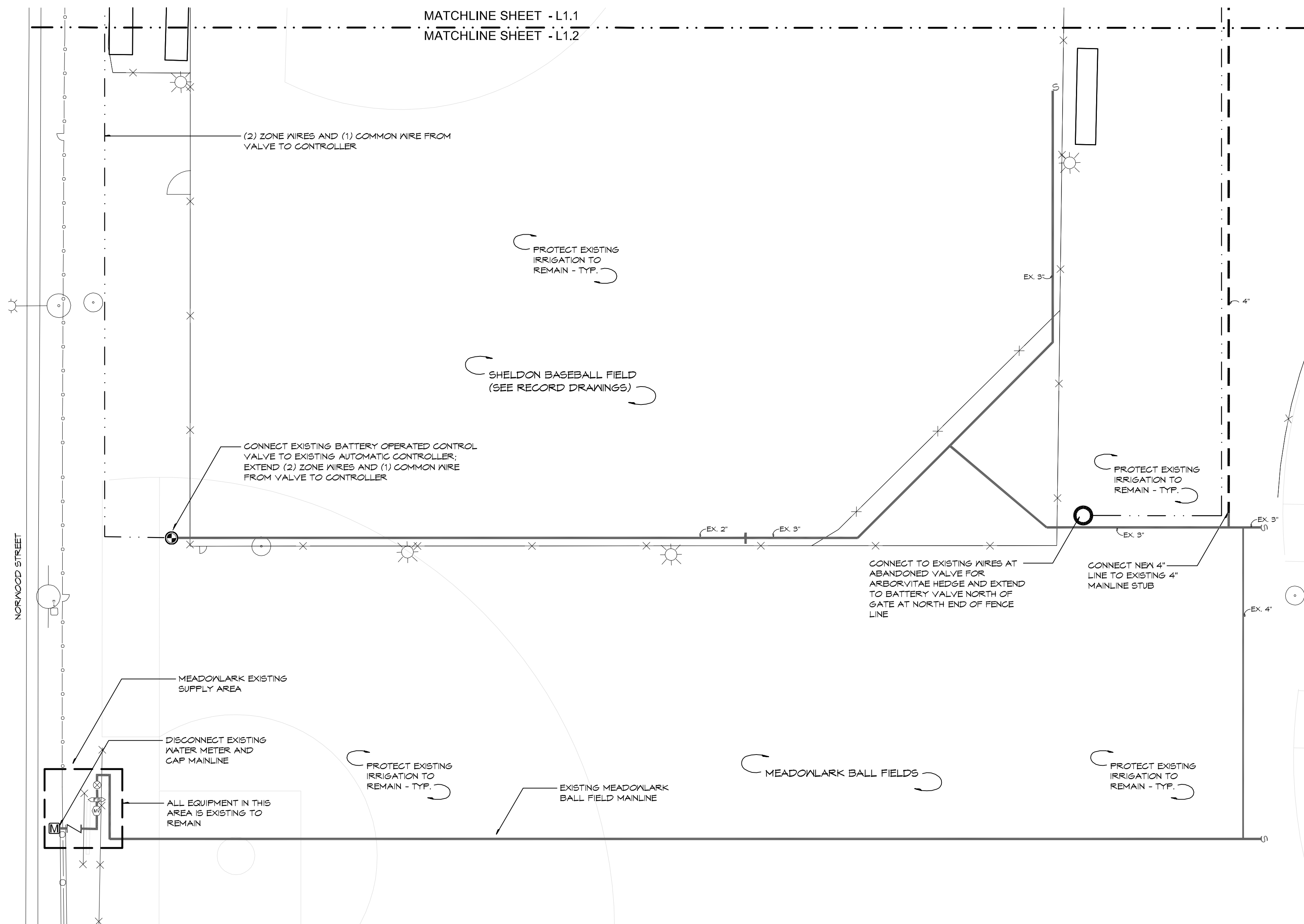
Checked By: DJD/RR

Submission: CONSTRUCTION SET

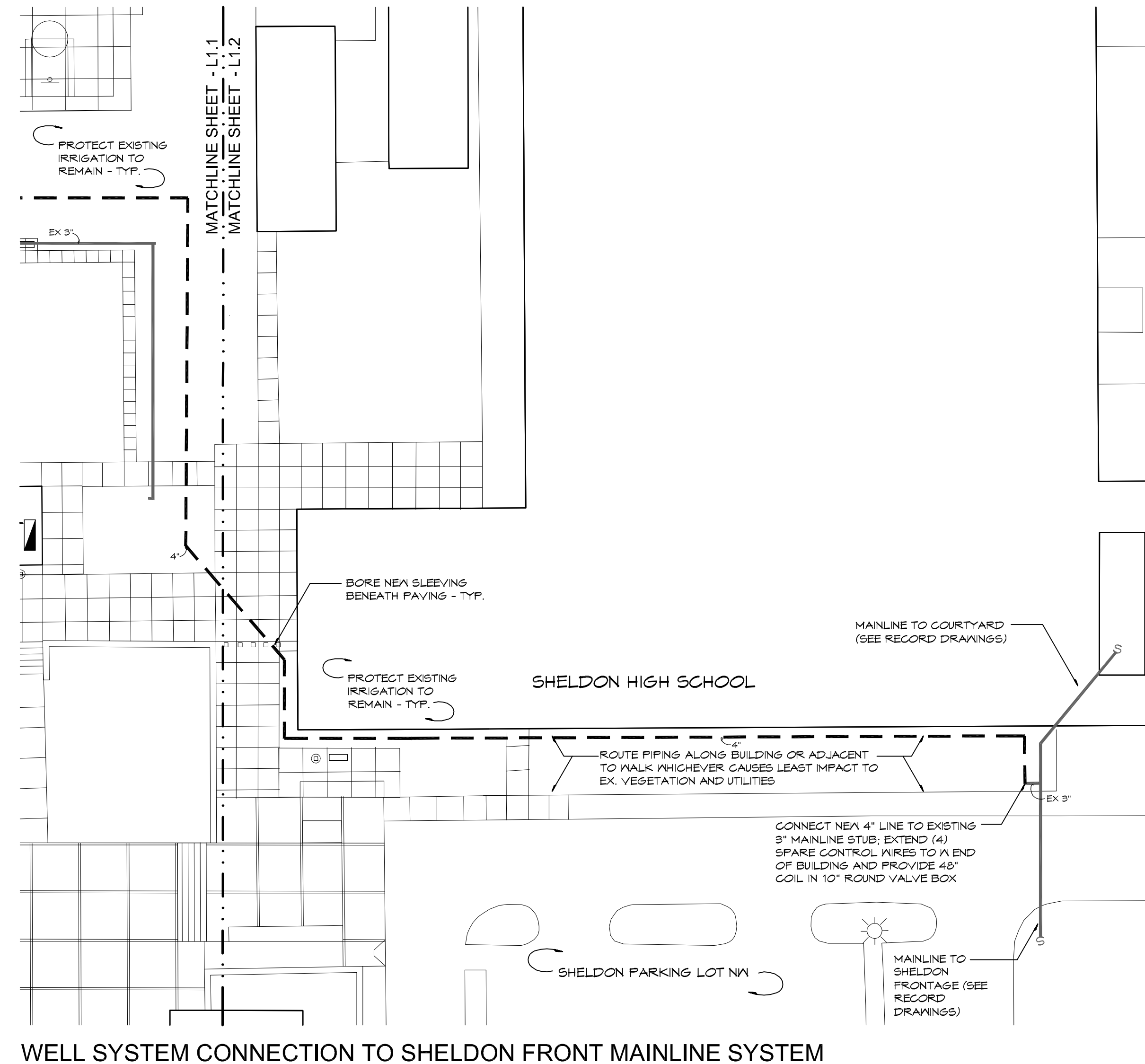
Revisions


**L1.1**

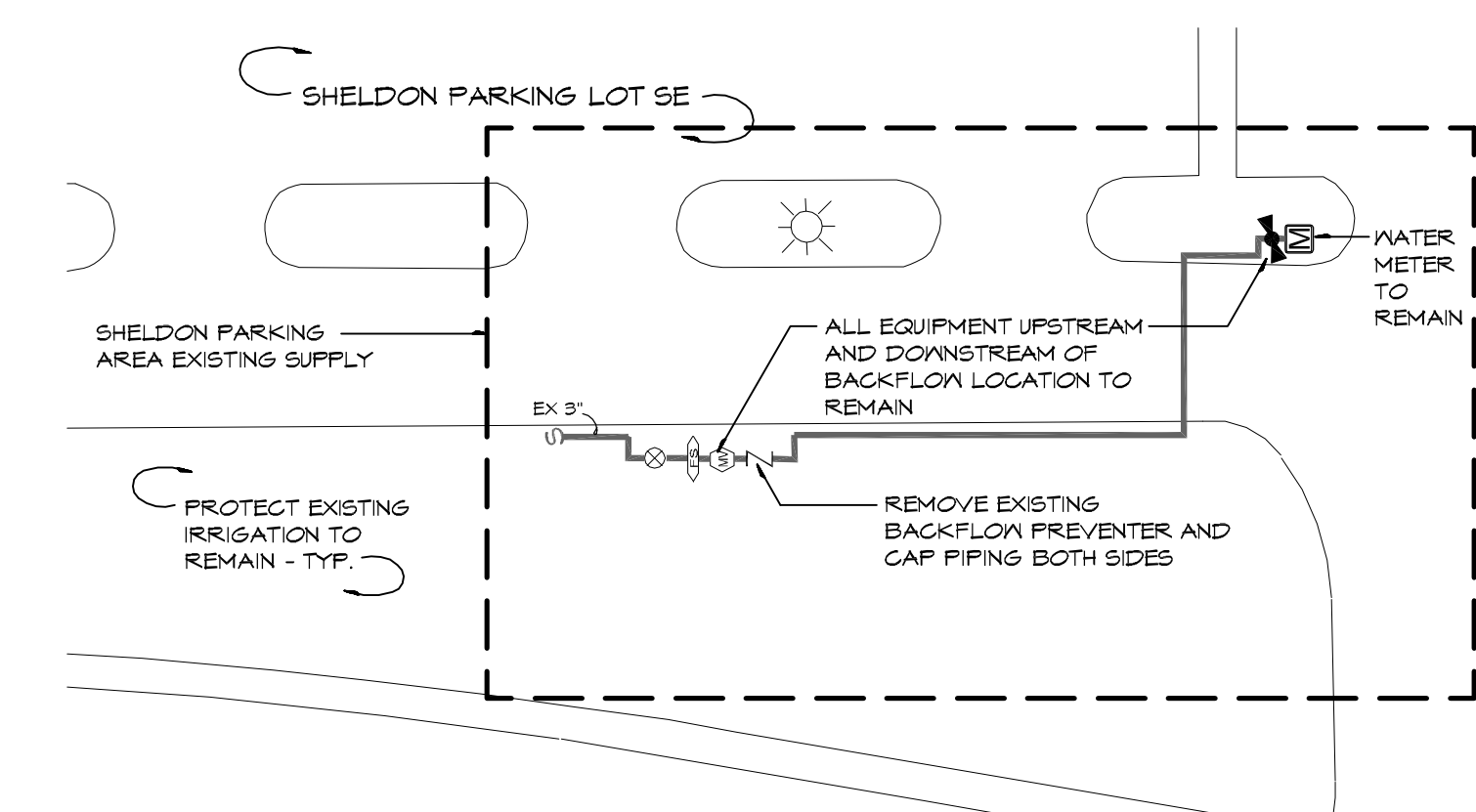
DLA INC. COPYRIGHT 2014



MEADOWLARK BALL FIELDS WELL CONNECTION AND WATER METER DISCONNECTION PLAN



WELL SYSTEM CONNECTION TO SHELDON FRONT MAINLINE SYSTEM

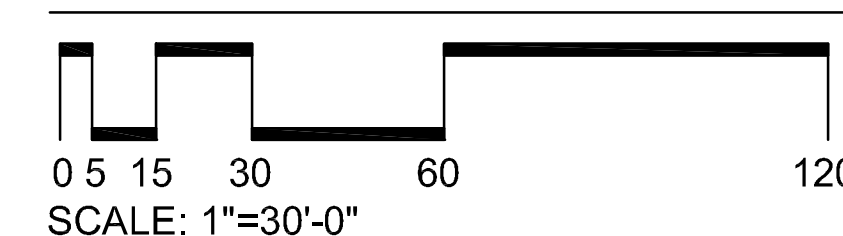


SHELDON HIGH SCHOOL PARKING AREA SUPPLY SYSTEM DISCONNECTION PLAN

NOTES

1. SEE SHEET L1.1 FOR LEGEND AND NOTES.
2. SEE SHEET L2.1 FOR DETAILS.
3. SEE SPECIFICATIONS FOR ADDITIONAL REQUIREMENTS.

IRRIGATION SYSTEM IMPROVEMENTS - B



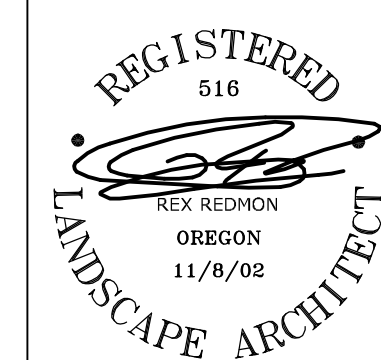
**DOUGHERTY  
LANDSCAPE  
ARCHITECTS**

474 Willamette Street  
Suite 305  
Eugene, Oregon 97401

P 541.683.5803

F 541.683.8183

www.DLAdesign.com



Client / Consultant

Eugene School  
District 4J

Facilities  
Management  
715 W. 4th  
Avenue

Eugene, OR  
97402

541-687-3169

**Eugene School District 4J**  
Sheldon Irrigation Pump and Mainline Replacement

Date: 23 APRIL 2014

Drawn By: RR

Checked By: DJD/RR

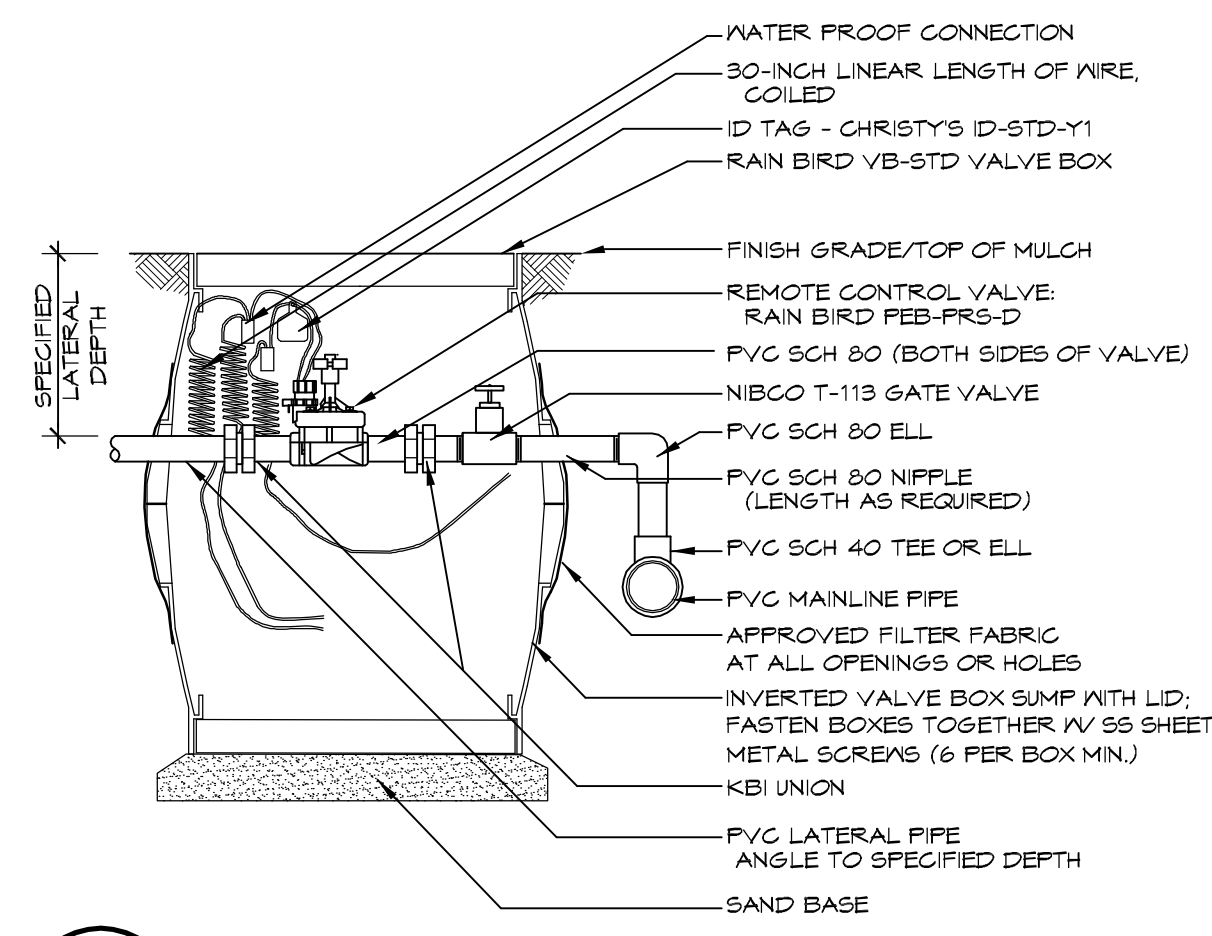
Submission:  
CONSTRUCTION SET

Revisions

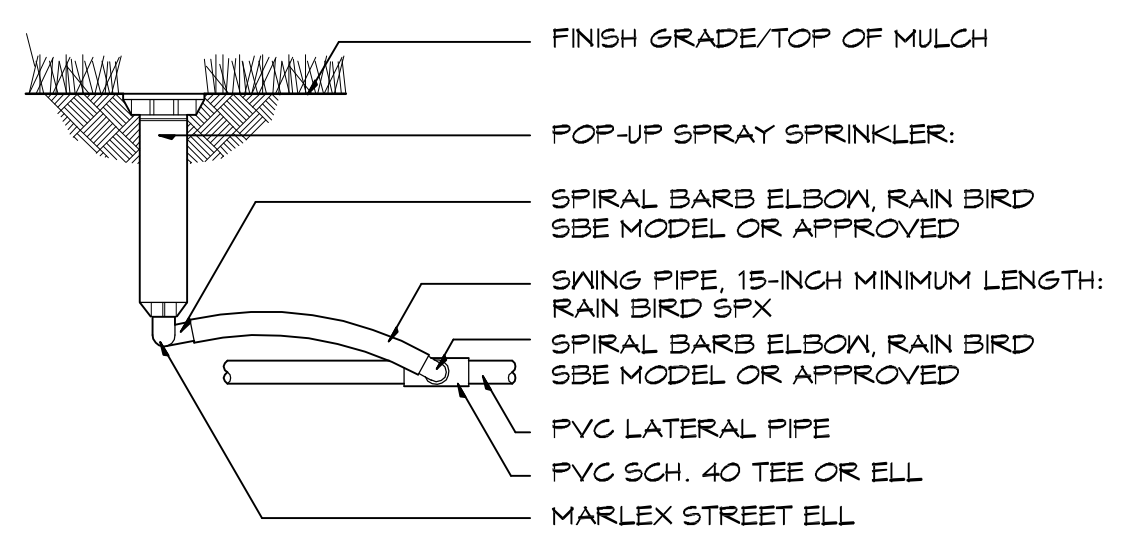

**L1.2**

DLA INC. COPYRIGHT 2014

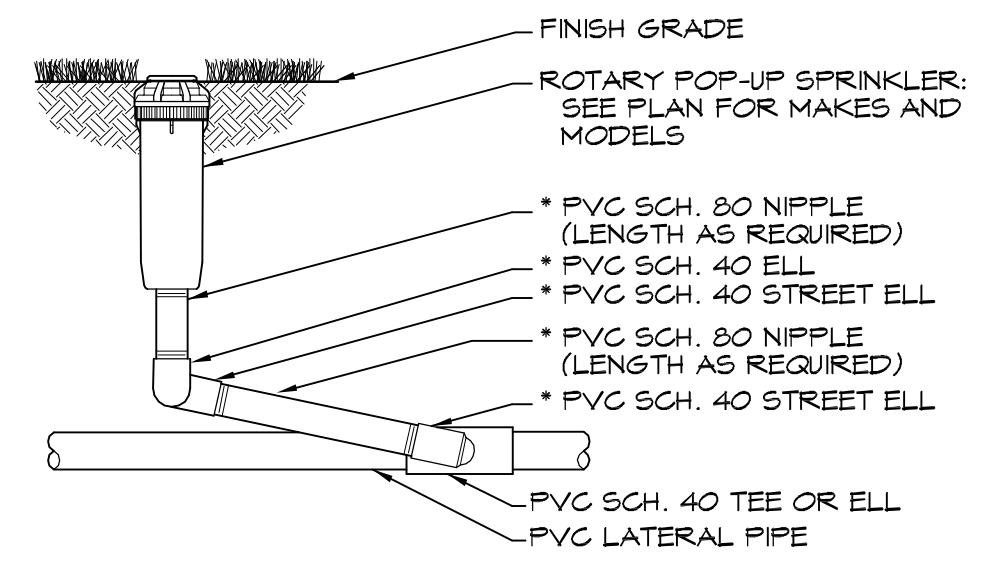




1 AUTOMATIC CONTROL VALVE ASSEMBLY  
L2.1 SECTION SCALE: 1" = 1'-0"

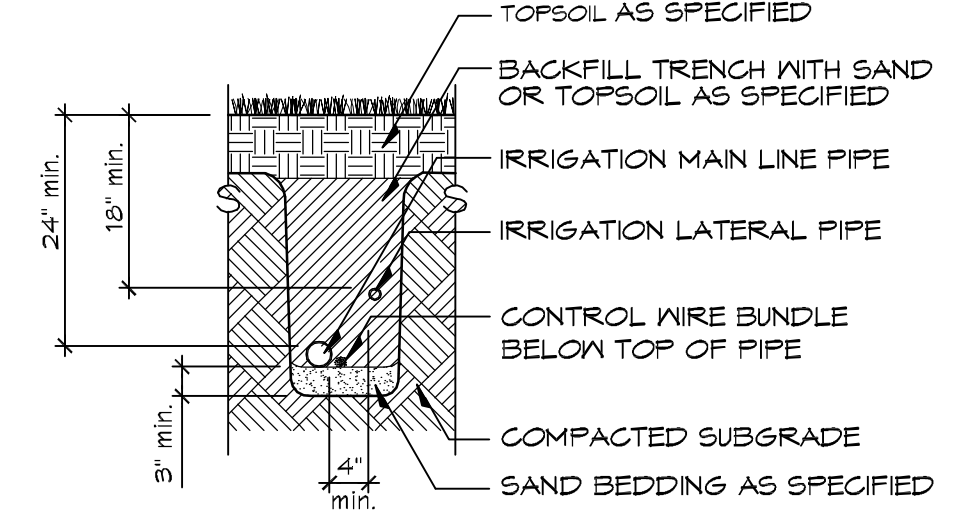


2 FLUSH MOUNTED POP-UP SPRAY SPRINKLER  
L2.1 SECTION N.T.S.



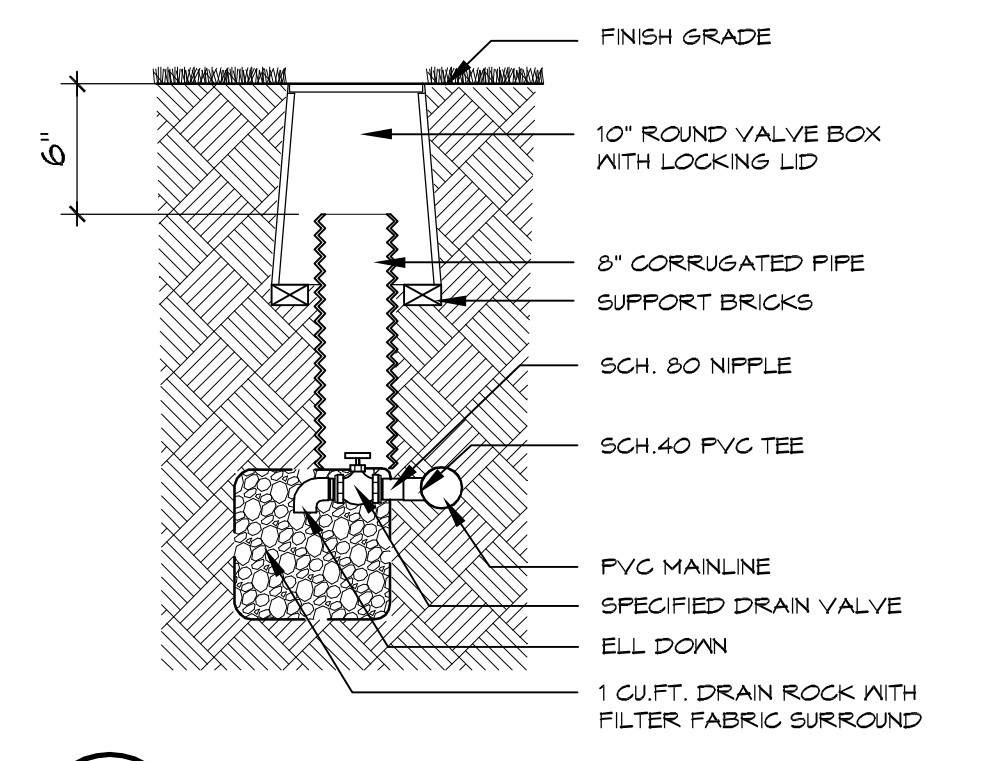
\* SWING ARM ASSEMBLY TO BE RAIN BIRD TSJ-12 OR TSJ-12075. MODEL TO MATCH INLET SIZE.

3 FLUSH MOUNTED POP-UP ROTARY SPRINKLER  
L2.1 SECTION N.T.S.

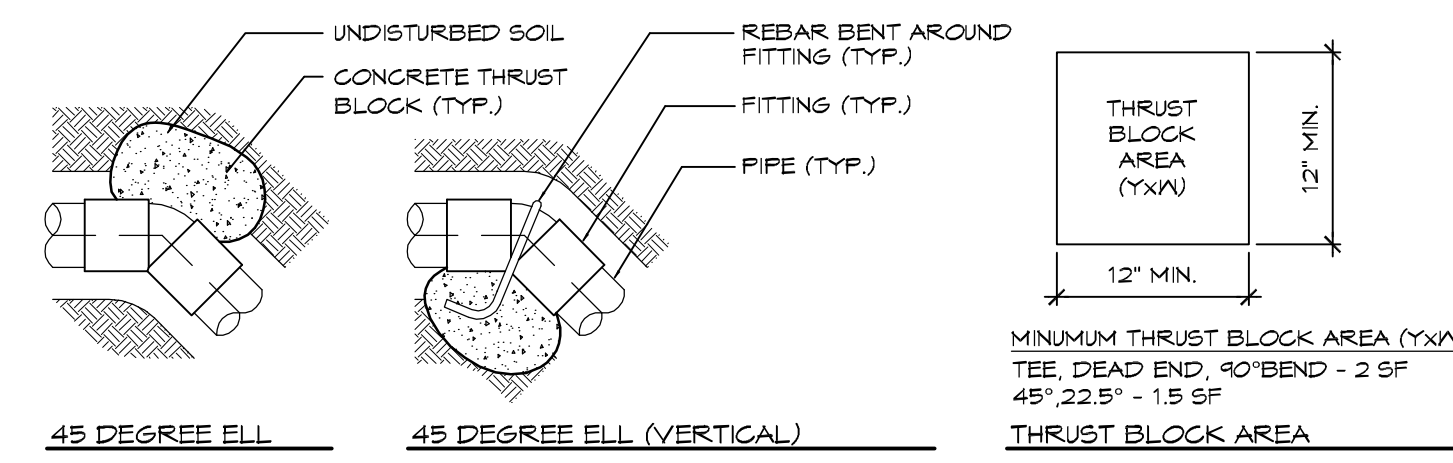
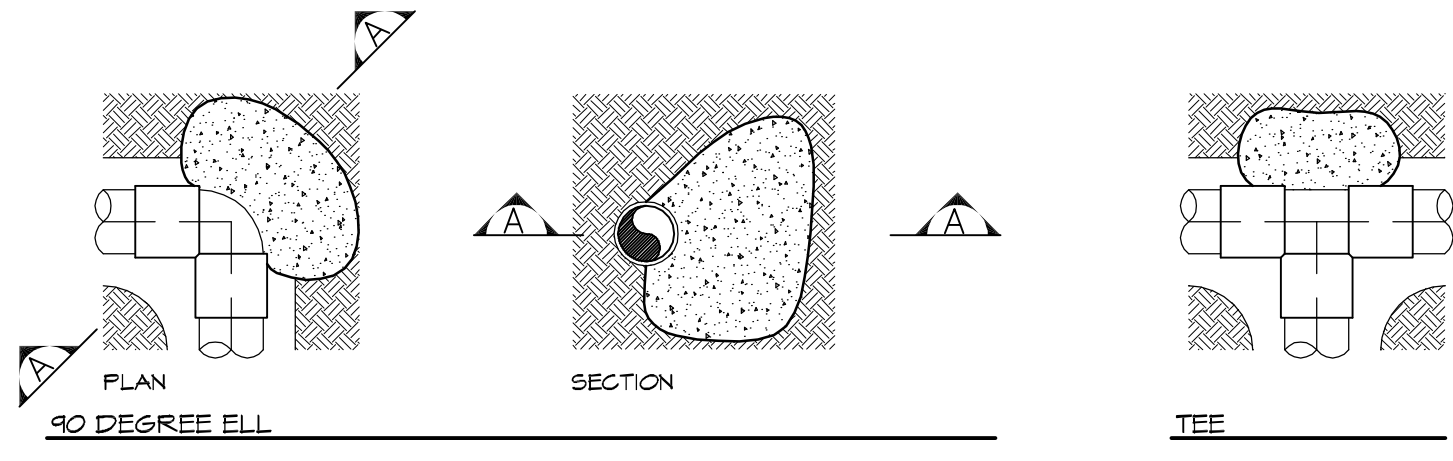


NOTE: MINIMUM HORIZONTAL CLEARANCE BETWEEN LINES: 2 INCH AND SMALLER PIPE: 4 INCHES, 2-1/2 INCH AND LARGER PIPE: 12 INCHES, MINIMUM VERTICAL CLEARANCE BETWEEN CROSSING LINES - 2 INCHES

4 IRRIGATION TRENCH THROUGH LAWN  
L2.1 SECTION N.T.S.

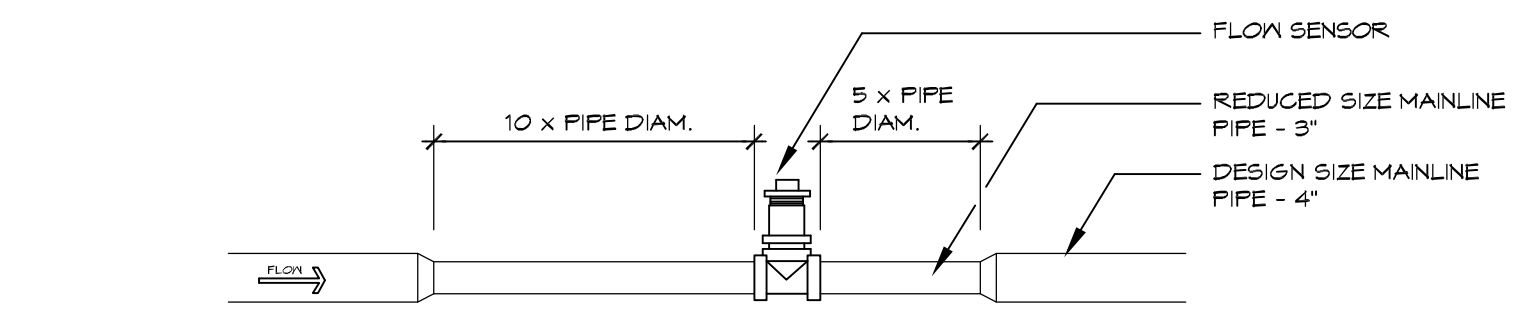


5 MANUAL MAIN LINE DRAIN VALVE  
L2.1 SECTION SCALE: 1" = 1'-0"

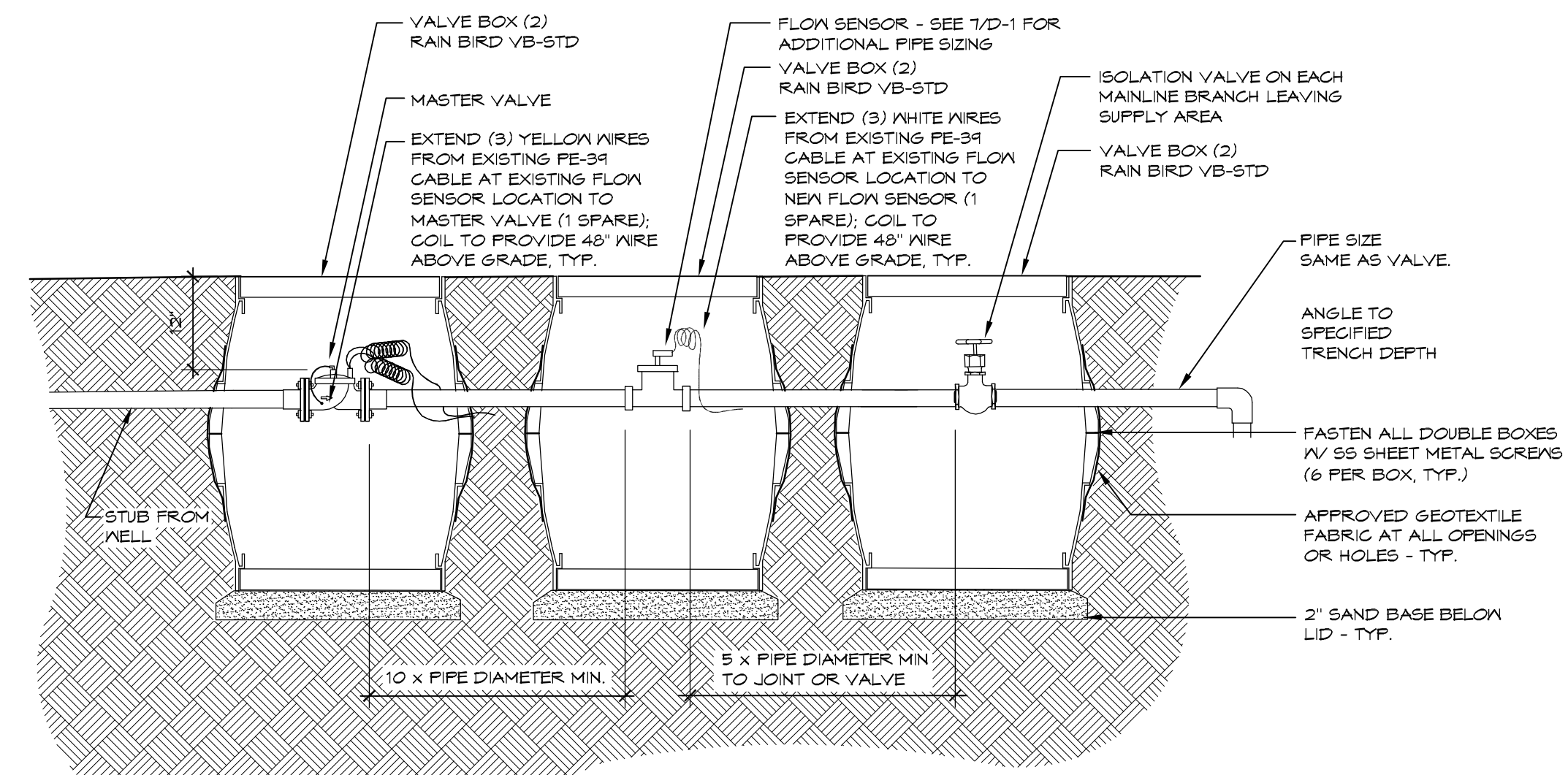


NOTES:  
1. MINIMUM THRUST BLOCK AREAS ARE BASED ON A SOIL BEARING CAPACITY OF 3000 LBS/SF  
2. THRUST BLOCK SHALL EXTEND INTO UNDISTURBED SOIL.  
3. THRUST BLOCK SHALL BE MAG SECT. 125-CLASS C.

6 THRUST BLOCKS AT ALL PIPING 4" AND LARGER  
L2.1 PLAN / SECTION N.T.S.



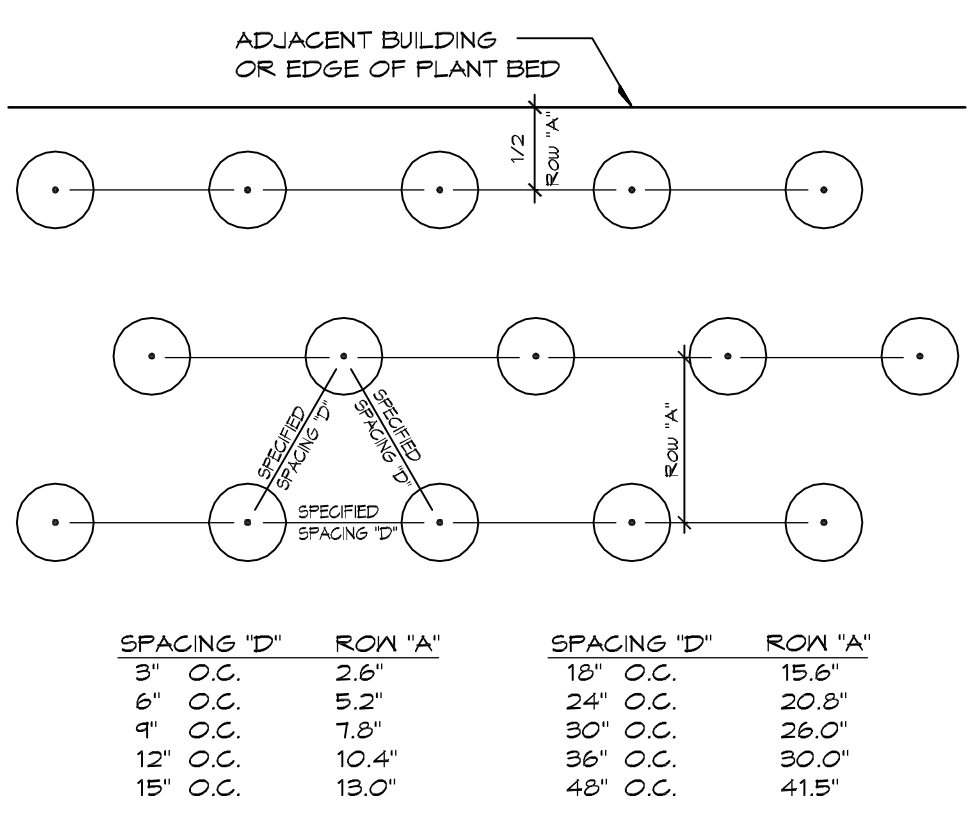
7 PIPE REDUCTION AT FLOW SENSOR  
L2.1 SECTION SCALE: 1" = 1'-0"



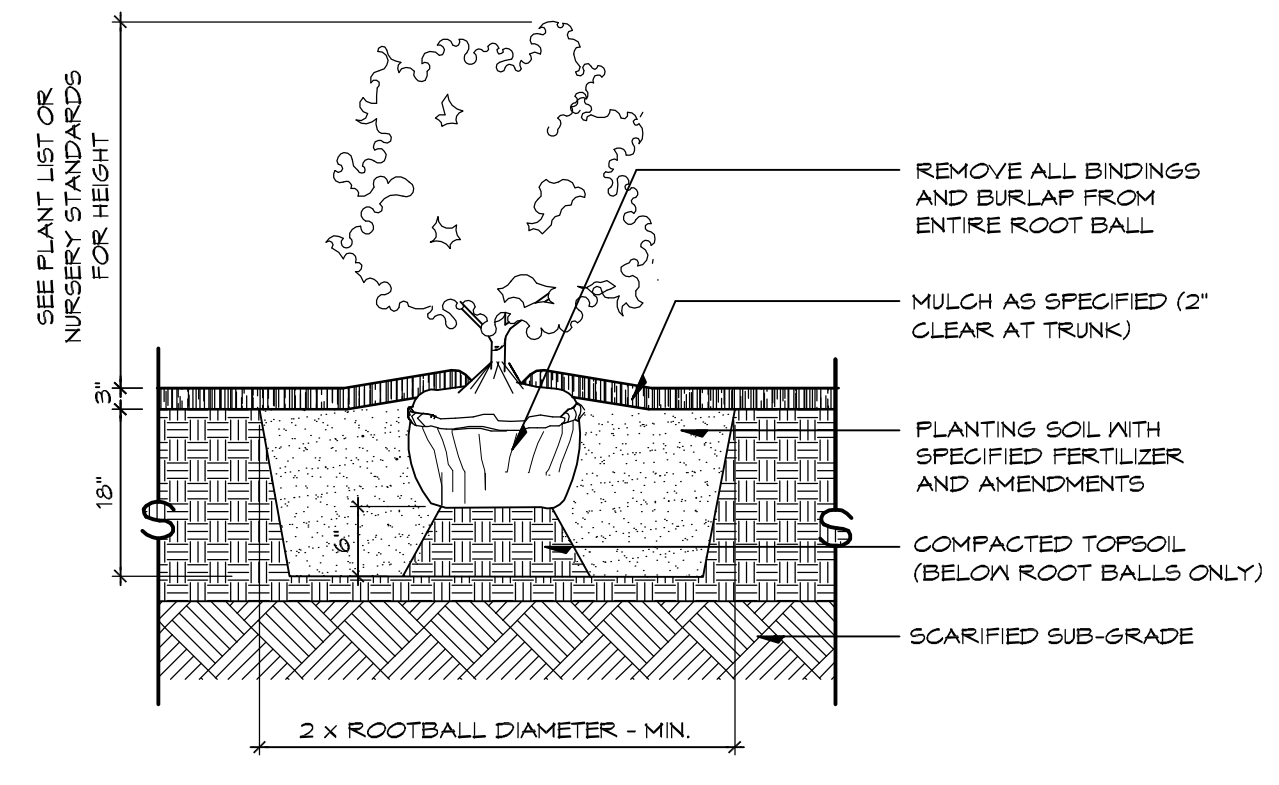
NOTES:  
1. INSTALL ISOLATION VALVE, ELECTRIC MASTER VALVE AND FLOW SENSOR 12 INCHES MAX BELOW FINISH GRADE.  
2. USE SPECIFIED SPLICE KIT FOR ALL SPLICES OF PE-34 WIRE.

8 MAXICOM WATER SUPPLY EQUIPMENT  
L2.1 SECTION N.T.S.

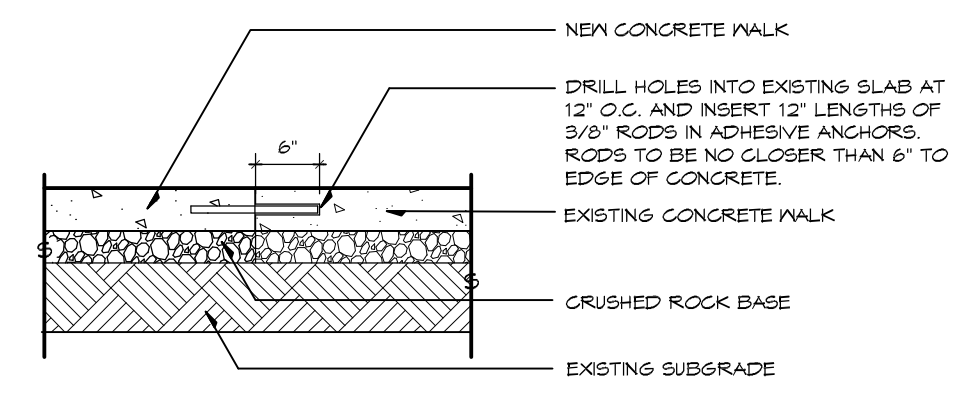
DETAILS BELOW FOR REPAIR OR RESTORATION IF NECESSARY



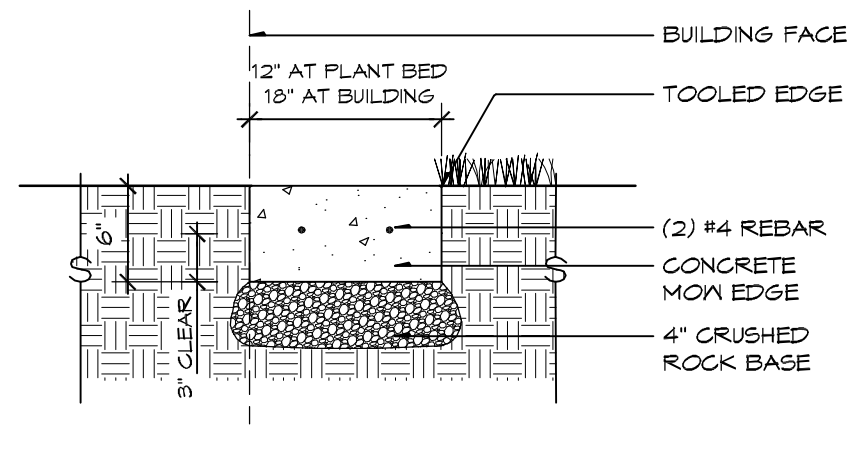
9 GROUNDCOVER SPACING DIAGRAM  
L2.1 PLAN N.T.S.



10 TYPICAL SHRUB PLANTING  
L2.1 SECTION SCALE: 1/2" = 1'-0"



11 DOWEL AT EXISTING / NEW CONCRETE  
L2.1 SECTION SCALE: 3/4" = 1'-0"



12 CONCRETE MOW EDGE  
L2.1 SECTION 1" = 1'-0"

**DLA**  
**DOUGHERTY LANDSCAPE ARCHITECTS**  
474 Willamette Street  
Suite 305  
Eugene, Oregon 97401  
P 541.683.5803  
F 541.683.8183  
www.DLAdesign.com

REGISTERED  
516  
LANDSCAPE ARCHITECT  
REX REGISTRATION  
OREGON  
11/8/02

Client / Consultant  
Eugene School District 4J  
Facilities Management  
715 W. 4th Avenue  
Eugene, OR 97402  
541-687-3169

**Eugene School District 4J**  
Sheldon Irrigation Pump and Mainline Replacement

Date: 23 APRIL 2014  
Drawn By: RR  
Checked By: DJD/RR  
Submission: CONSTRUCTION SET

Revisions

