

# FIRE & LIFE-SAFETY IMPROVEMENTS - 2014

EUGENE SCHOOL DISTRICT 4J  
 VARIOUS SITES  
 EUGENE OREGON

CIP: #420.684.702

**gLas**  
 Architects, LLC

1415 Pearl Street  
 Eugene, Oregon 97401

541 686-2014  
 541 686-2017 fax



CONSULTANTS

## CONSULTANTS

**ELECTRICAL ENGINEERING  
 SYSTEMS WEST ENGINEERS, INC.**

411 HIGH ST.  
 EUGENE OREGON 97401  
 PHONE: 541-342-7210  
 FAX: 541-342-7220

## SYMBOLS

- DRAWING LETTER  
DETAIL MARK  
DETAIL NO.
- DRAWING LETTER  
INTERIOR ELEVATION MARK  
SHEET NO.
- DRAWING LETTER  
BUILDING SECTION CALLOUT  
SHEET NO.
- ROOM IDENTIFICATION NO.  
or ROOM NAME
- ROOM NAME  
ROOM IDENTIFICATION NO.
- DOOR LETTER  
DOOR MARK  
ROOM NO.
- RELIGHT OR WINDOW TYPE
- KEYED NOTE
- ELEVATION CALLOUT
- REVISION CLOUD  
WITH KEYED NOTE

## DRAWING INDEX

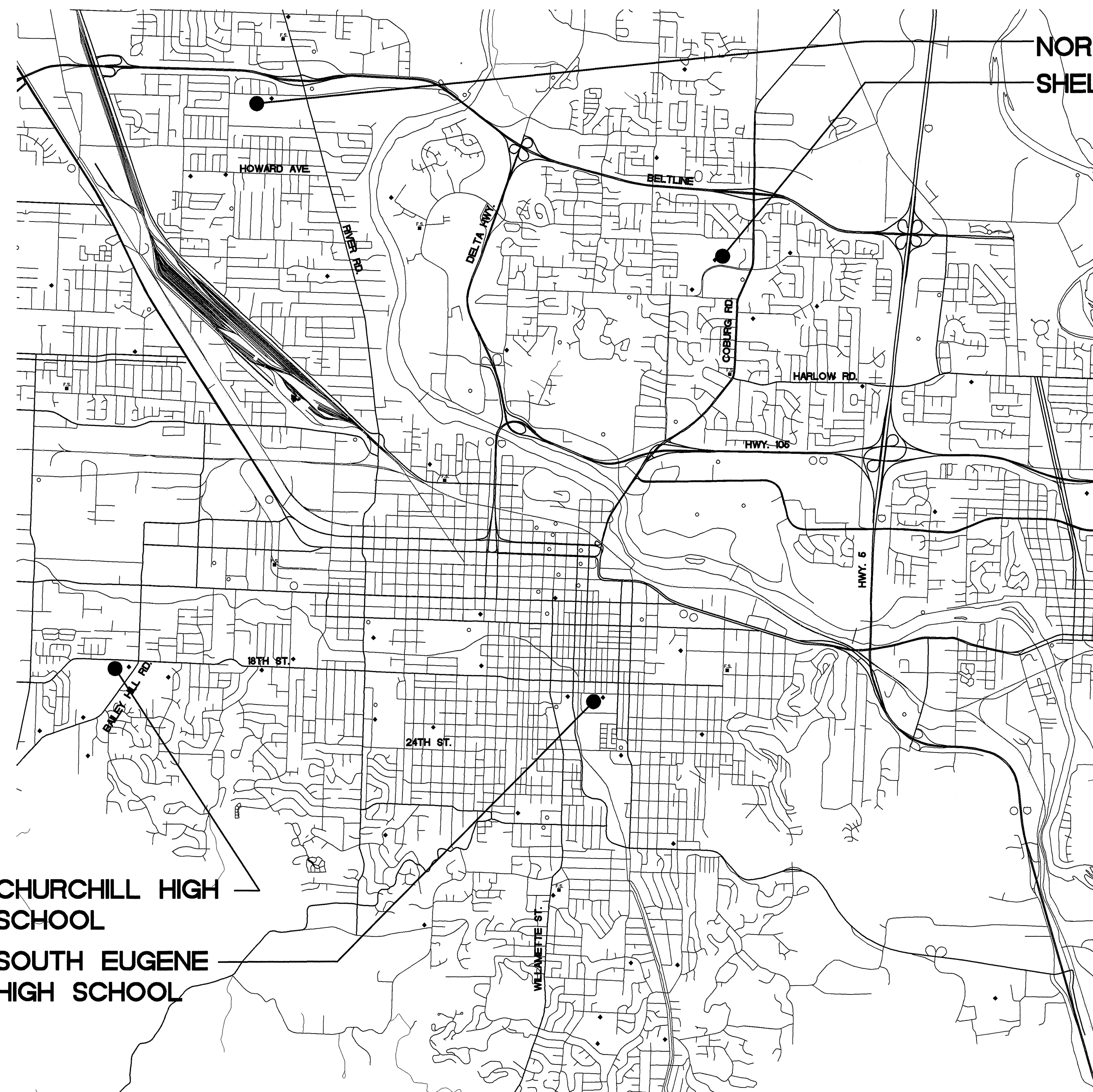
00 COVER SHEET, DRAWING INDEX,  
 PROJECT DATA, VICINITY MAP

### ARCHITECTURAL DRAWINGS

- A1 South Eugene High School  
 400 East 19th Avenue 97401  
 Map:18-03-05-22 Tax Lot:06000
- A2 North Eugene High School  
 200 Silver Lane 97404  
 Map:17-04-14-13 Tax Lot:00100
- A3 Sheldon High School  
 2455 Willakenzie Road 97401  
 Map:17-03-20-12 Tax Lot:04300
- A4 Churchill High School  
 1850 Bailey Hill Road 97405  
 Map:18-04-03-10 Tax Lot:00100

### ELECTRICAL DRAWINGS

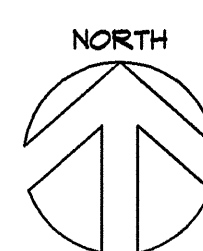
- E-1 South Eugene High School Plan  
 and Electrical legend
- E-2 Sheldon High School Plan
- E-3 Churchill High School Plan



NORTH EUGENE HIGH SCHOOL  
 SHELDON HIGH SCHOOL

CHURCHILL HIGH SCHOOL  
 SOUTH EUGENE HIGH SCHOOL

VICINITY MAP  
 SCALE: NO SCALE



**FIRE & LIFE SAFETY  
 IMPROVEMENTS - 2014**  
**EUGENE SCHOOL DISTRICT NO. 4J  
 VARIOUS SCHOOLS**  
 EUGENE OREGON  
 CIP #420.684.702

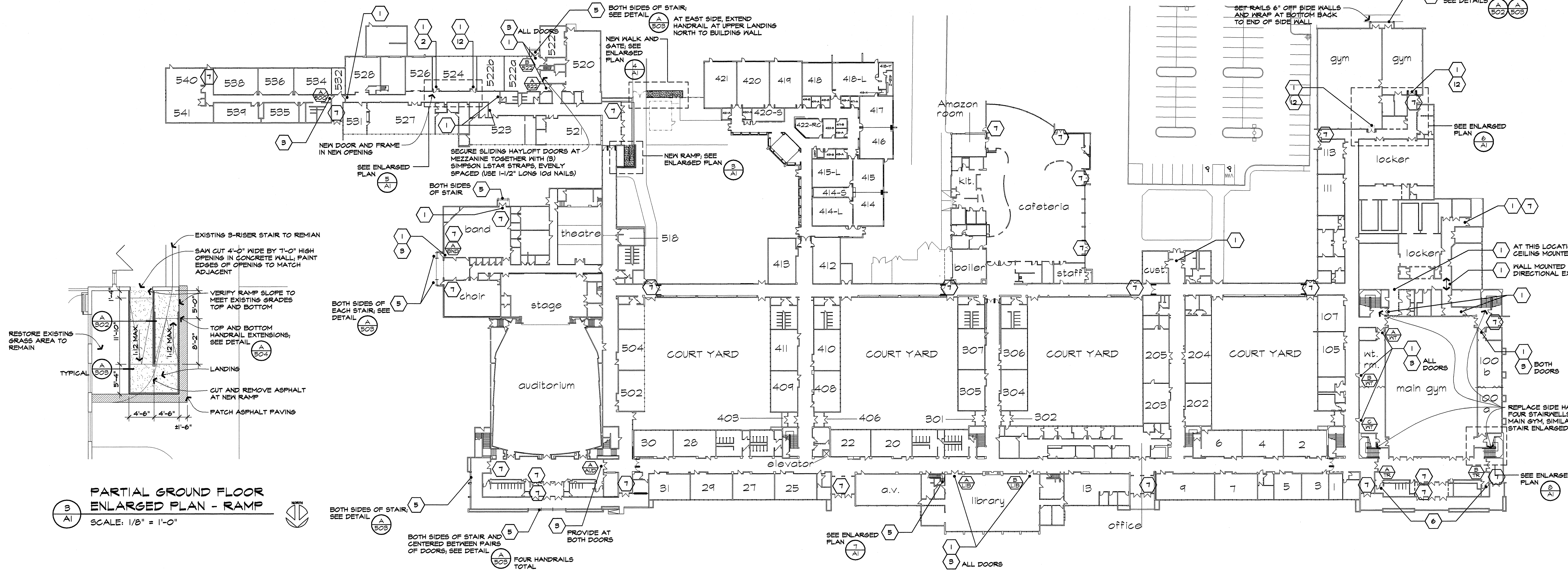
**gLas**  
 Architects, LLC COPYRIGHT 2014

COVER SHEET  
 VICINITY MAP  
 DRAWING INDEX

PROJECT NUMBER  
 11041

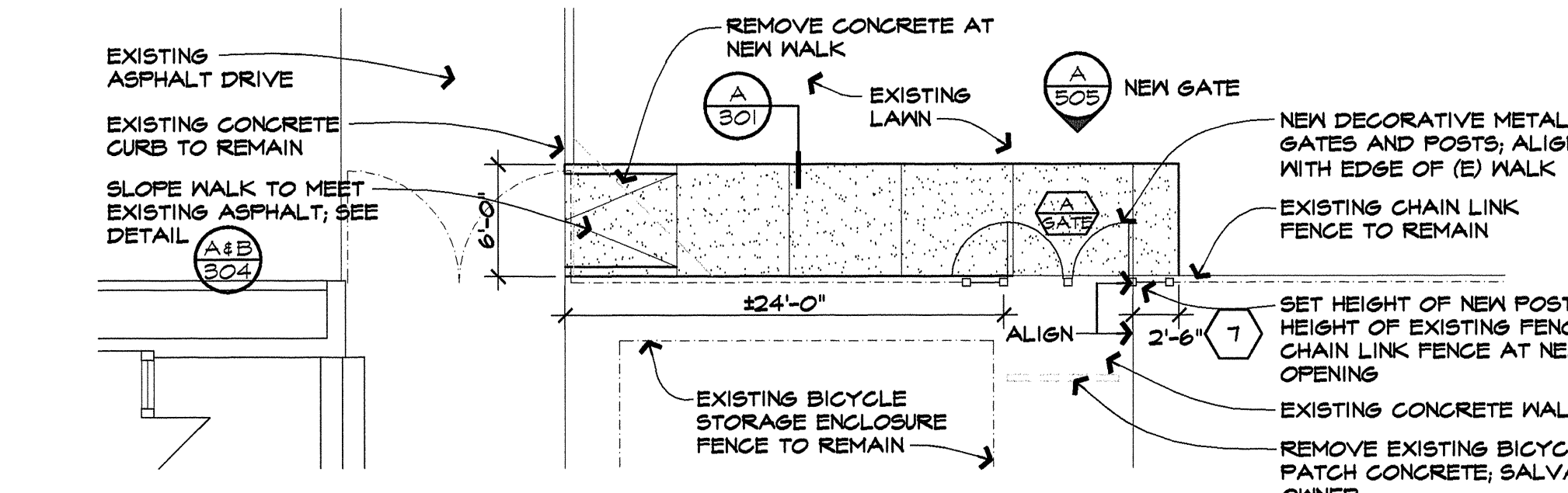
DATE  
 4/1/14

00

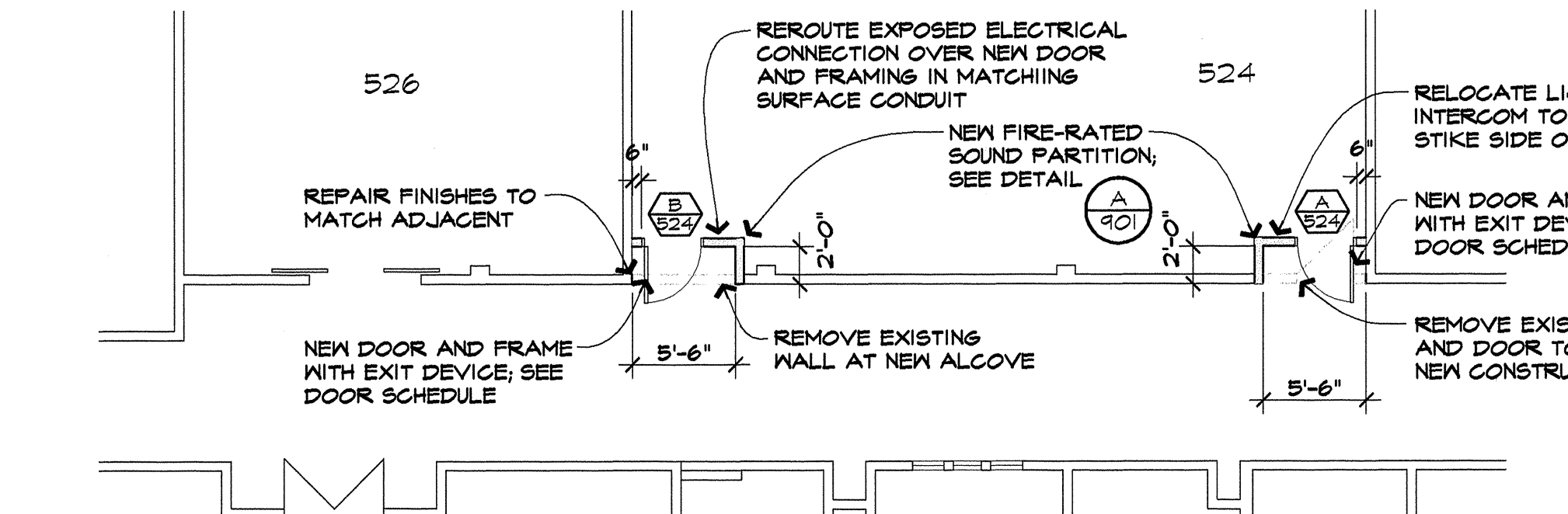


**PARTIAL GROUND FLOOR ENLARGED PLAN - RAMP**  
SCALE: 1/8" = 1'-0"

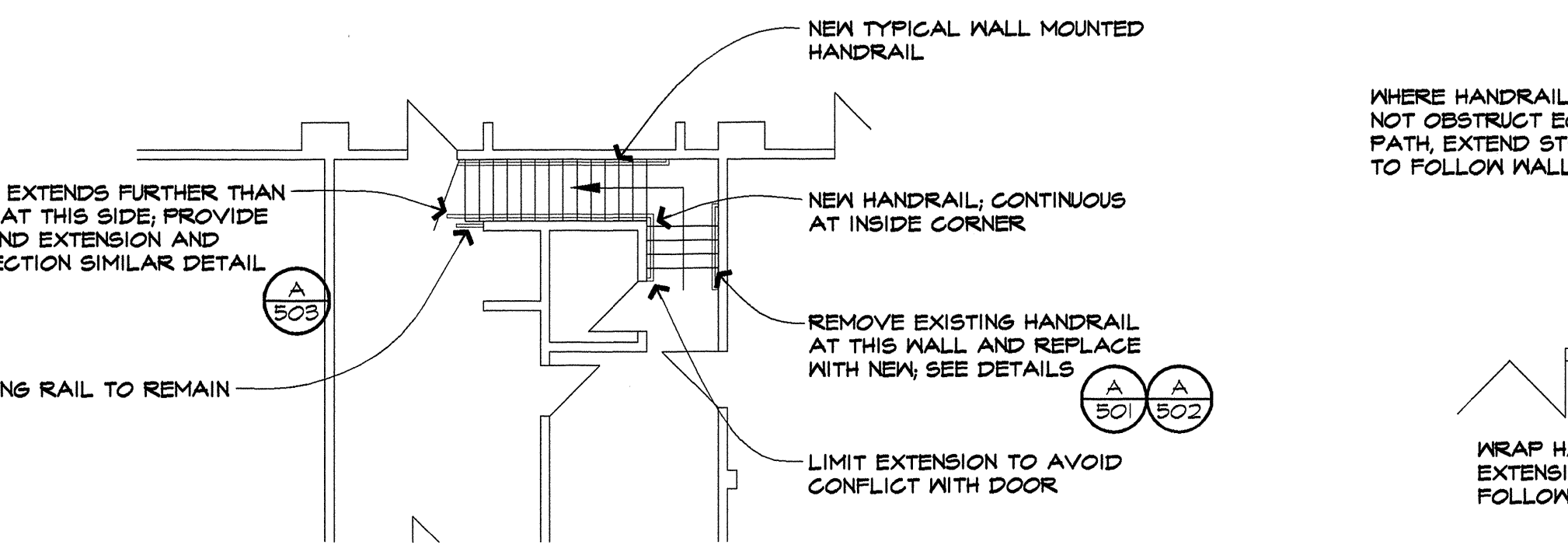
**GROUND FLOOR PLAN**  
SCALE: NOT TO SCALE



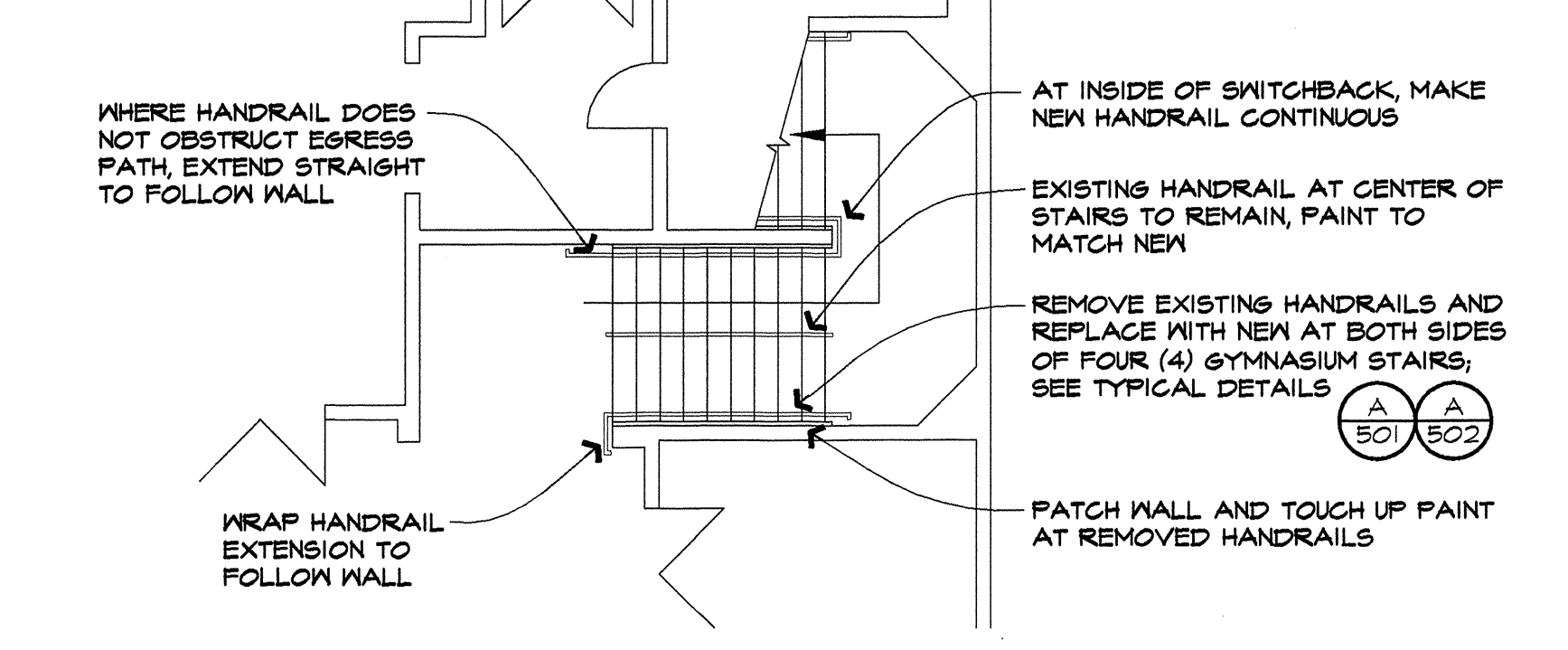
**PARTIAL GROUND FLOOR ENLARGED PLAN - SOUTH GATE**  
SCALE: 1/8" = 1'-0"



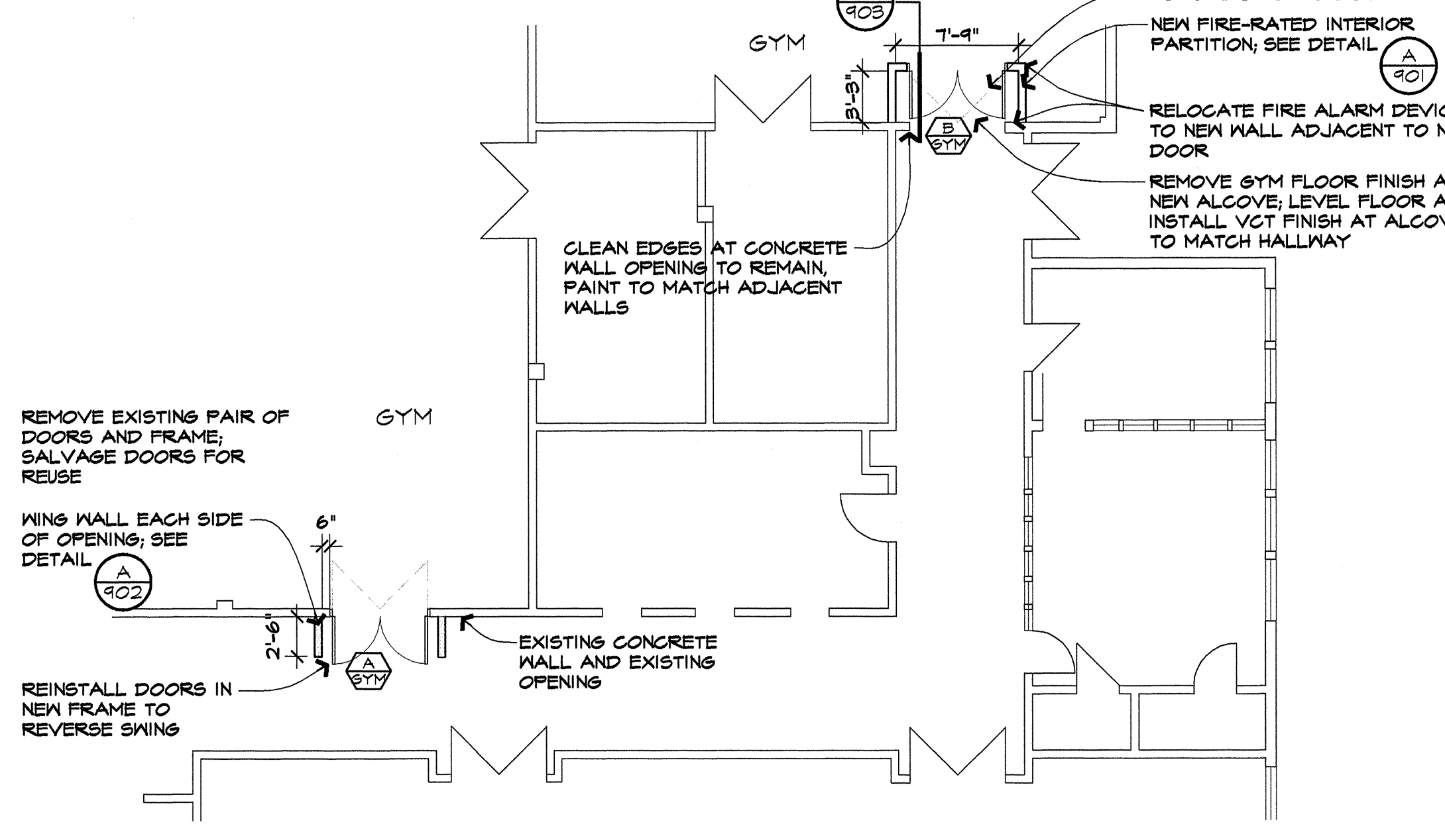
**PARTIAL GROUND FLOOR ENLARGED PLAN - ARTS WING**  
SCALE: 1/8" = 1'-0"



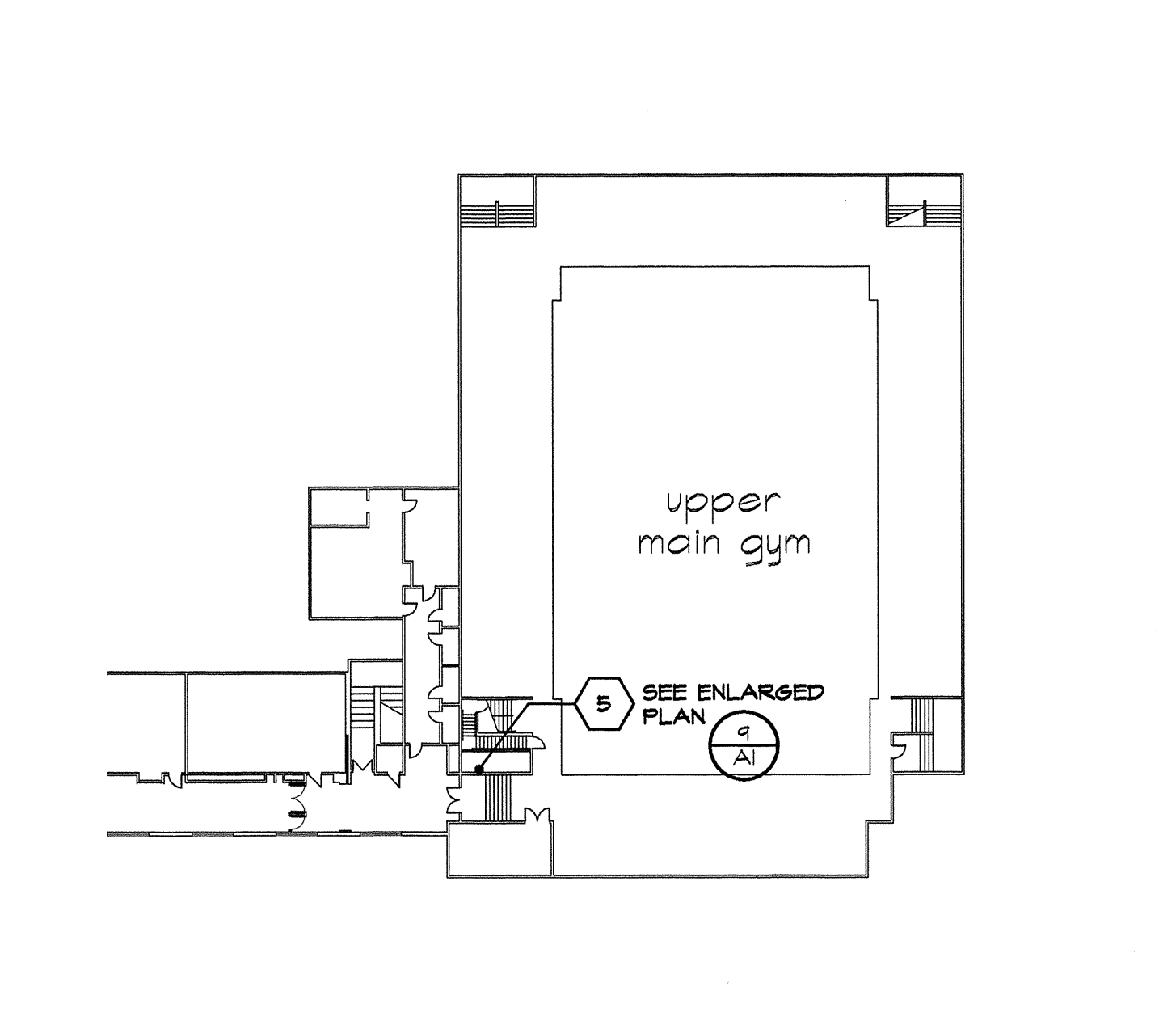
**PARTIAL GROUND FLOOR ENLARGED PLAN - LIBRARY MEZZANINE**  
SCALE: 1/8" = 1'-0"



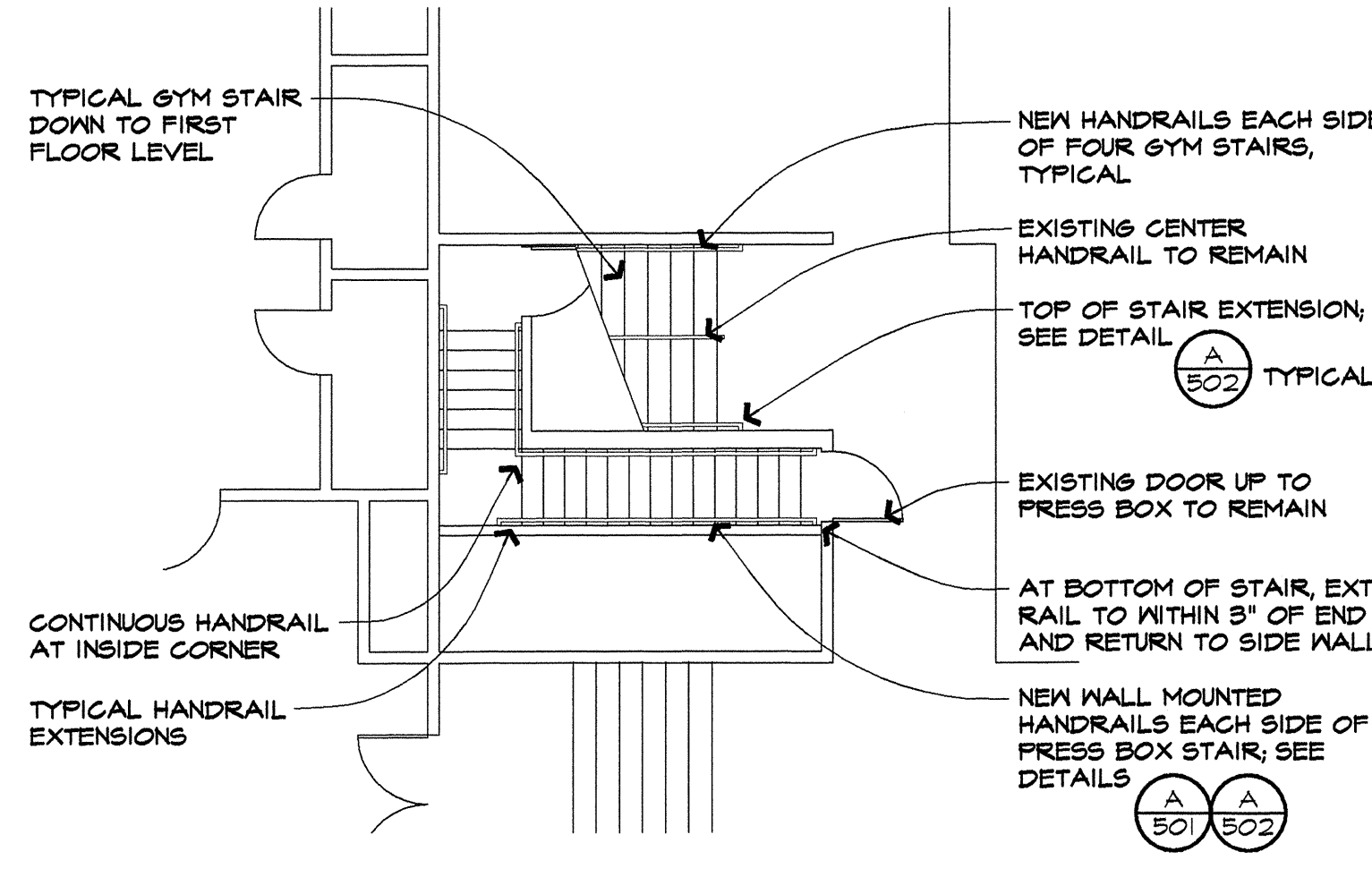
**PARTIAL GROUND FLOOR ENLARGED PLAN - TYPICAL GYM STAIR**  
SCALE: 1/8" = 1'-0"



**PARTIAL GROUND FLOOR ENLARGED PLAN - GYMNASIUMS**  
SCALE: 1/8" = 1'-0"



**PARTIAL SECOND FLOOR PLAN**  
SCALE: NOT TO SCALE



**PARTIAL SECOND FLOOR ENLARGED PLAN - PRESS BOOTH**  
SCALE: 1/8" = 1'-0"

- LEGEND**
- (2) DENOTES NUMBERED KEY NOTE BELOW - NOT ALL NOTES USED AT EACH SITE
- KEYNOTES**
1. PROVIDE ILLUMINATED EXIT SIGNAGE - SEE ELECTRICAL
  2. PROVIDE NEW DOOR
  3. PROVIDE EXIT DEVICE TO (E) DOOR
  4. CREATE EXIT PASSAGE TO CORRIDOR
  5. PROVIDE HANDRAIL
  6. REPLACE DEADBOLT WITH LATCHING HARDWARE
  7. INSTALL TACTILE EXIT SIGNAGE, SEE DETAILS (A100) (A101) (A102)
  8. INSTALL COORDINATOR AND CLOSER
  9. INSTALL HANDRAIL EXTENSIONS OR REPLACE HANDRAIL
  10. REMOVE OVERHEAD DOORS
  11. INSTALL EGRESS LIGHTING
  12. REMOVE EXISTING DOOR(S) AND FRAME, REPLACE WITH NEW DOOR(S) AND FRAME IN NEW PARTITION WALL TO REVERSE DOOR SWING
  13. REMOVE OVERHEAD COLLING GRILLE



CONSULTANTS

**FIRE & LIFE SAFETY  
IMPROVEMENTS - 2014**  
EUGENE SCHOOL DISTRICT NO. 4J  
VARIOUS SCHOOLS  
EUGENE OREGON  
CIP #420.684.702

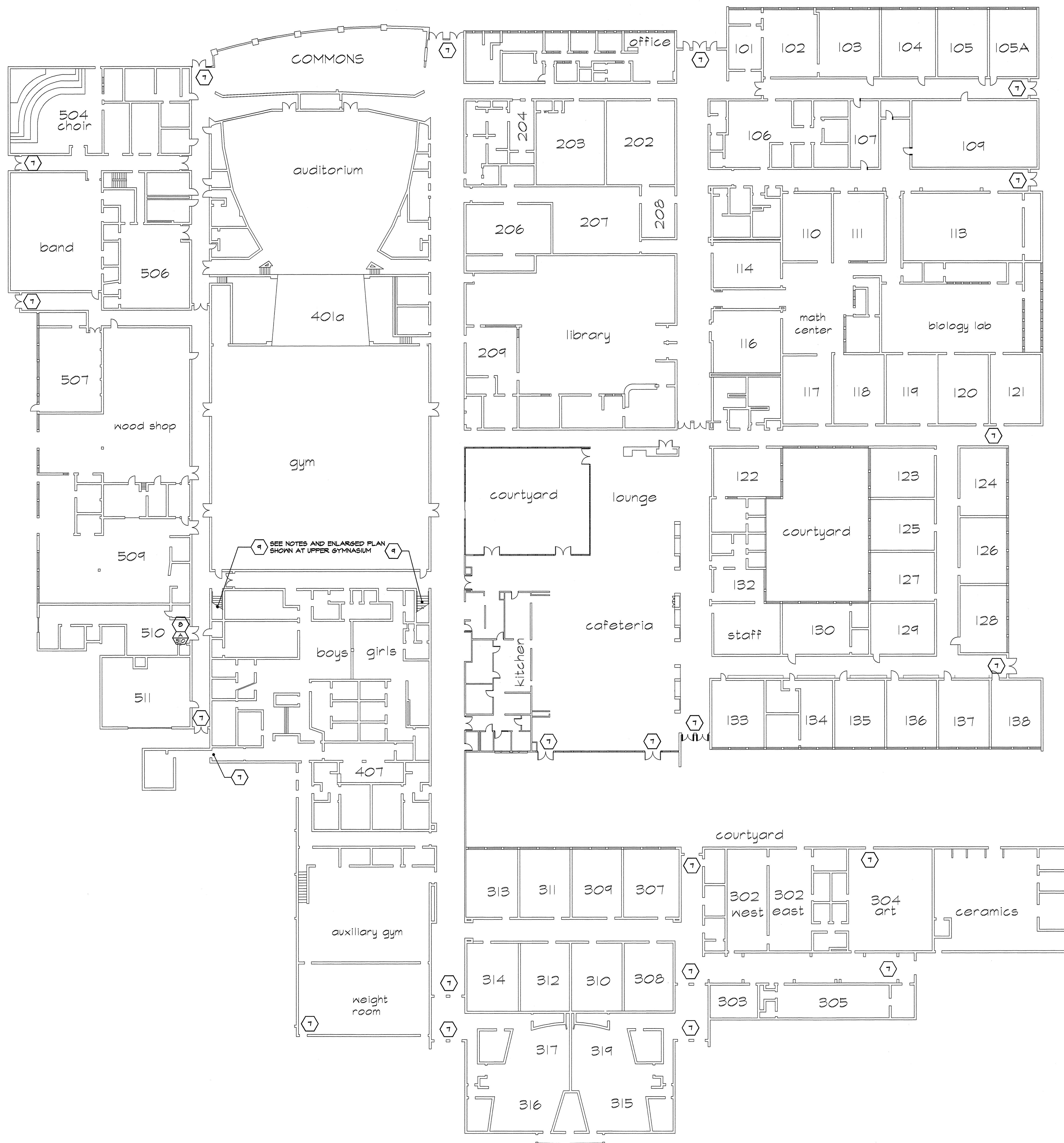
**gLas**  
Architects, LLC COPYRIGHT 2014

**NORTH EUGENE  
HIGH SCHOOL**

PROJECT NUMBER  
11041

DATE  
4/1/14

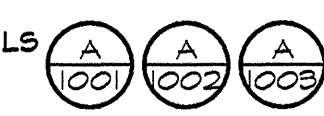
**A2**



**LEGEND**  
② DENOTES NUMBERED KEY NOTE BELOW  
- NOT ALL NOTES USED AT EACH SITE

**KEYNOTES**

1. PROVIDE ILLUMINATED EXIT SIGNAGE - SEE ELECTRICAL
2. PROVIDE NEW DOOR
3. PROVIDE EXIT DEVICE TO (E) DOOR
4. CREATE EXIT PASSAGE TO CORRIDOR
5. PROVIDE HANDRAIL
6. REPLACE DEADBOLT WITH LATCHING HARDWARE
7. INSTALL TACTILE EXIT SIGNAGE; SEE DETAILS
8. INSTALL COORDINATOR AND CLOSER
9. INSTALL HANDRAIL EXTENSIONS OR REPLACE HANDRAIL
10. REMOVE OVERHEAD DOORS
11. INSTALL EGRESS LIGHTING
12. REMOVE EXISTING DOOR(S) AND FRAME, REPLACE WITH NEW DOOR(S) AND FRAME IN NEW PARTITION WALL TO REVERSE DOOR SWING
13. REMOVE OVERHEAD COILING GRILLE

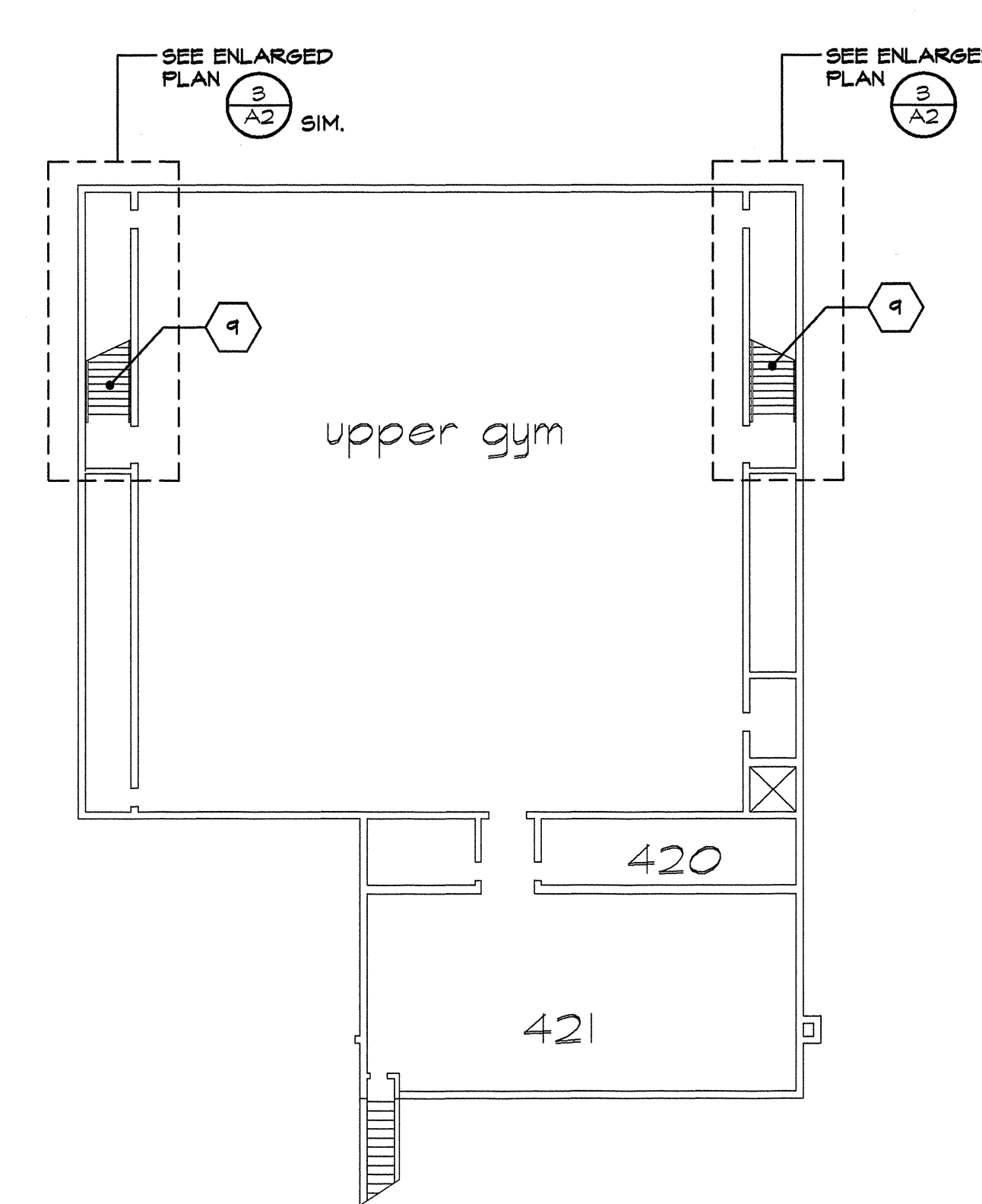


EXTEND HANDRAILS TO BOTTOM OF STAIRS WITH EXTENSIONS (NOT SHOWN)

REPLACE OR EXTEND HANDRAILS AT EACH SIDE OF EXISTING STAIR, SEE DETAILS

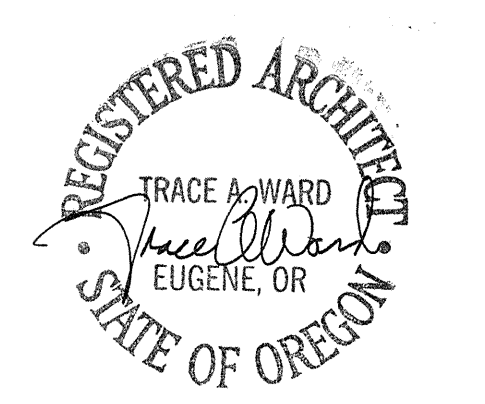
PATCH WALLS AND TOUCH UP PAINT AT BOLT HOLE MOUNTING LOCATIONS OF EXISTING HANDRAIL.

**③ A2 UPPER GYMNASIUM PLAN**  
SCALE: 1/8" = 1'-0"



**③ A2 UPPER GYMNASIUM PLAN**  
SCALE: NOT TO SCALE

**① A2 GROUND FLOOR PLAN**  
SCALE: NOT TO SCALE



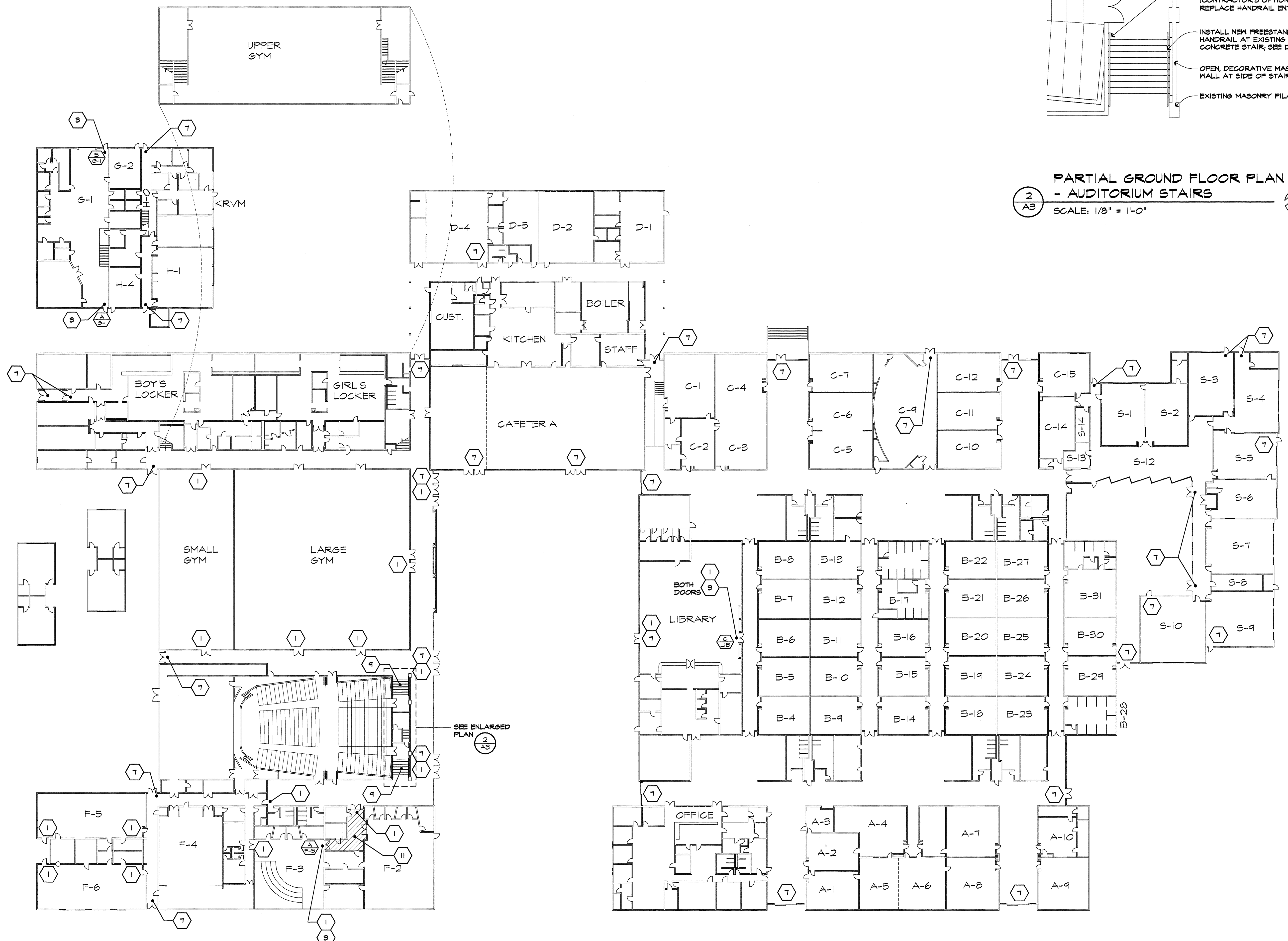
CONSULTANTS

**FIRE & LIFE SAFETY  
IMPROVEMENTS - 2014**  
EUGENE SCHOOL DISTRICT NO. 4J  
VARIOUS SCHOOLS  
EUGENE OREGON  
CIP #420.664.702

SHELDON  
HIGH SCHOOL

PROJECT NUMBER 11041 DATE 4/1/14

**A3**



**2**  
A3  
PARTIAL GROUND FLOOR PLAN  
- AUDITORIUM STAIRS  
SCALE: 1/8" = 1'-0"

- LEGEND**
- (2) DENOTES NUMBERED KEY NOTE BELOW - NOT ALL NOTES USED AT EACH SITE
- KEYNOTES**
1. PROVIDE ILLUMINATED EXIT SIGNAGE - SEE ELECTRICAL
  2. PROVIDE NEW DOOR
  3. PROVIDE EXIT DEVICE TO (E) DOOR
  4. CREATE EXIT PASSAGE TO CORRIDOR
  5. PROVIDE HANDRAIL
  6. REPLACE DEADBOLT WITH LATCHING HARDWARE
  7. INSTALL TACTILE EXIT SIGNAGE; SEE DETAILS (A1001) (A1002) (A1003)
  8. INSTALL COORDINATOR AND CLOSER
  9. INSTALL HANDRAIL EXTENSIONS OR REPLACE HANDRAIL
  10. REMOVE OVERHEAD DOORS
  11. INSTALL EGRESS LIGHTING
  12. REMOVE EXISTING DOOR(S) AND FRAME, REPLACE WITH NEW DOOR(S) AND FRAME IN NEW PARTITION WALL TO REVERSE DOOR SWING
  13. REMOVE OVERHEAD COILING GRILLE

**1**  
A3  
GROUND FLOOR PLAN  
SCALE: NOT TO SCALE



CONSULTANTS

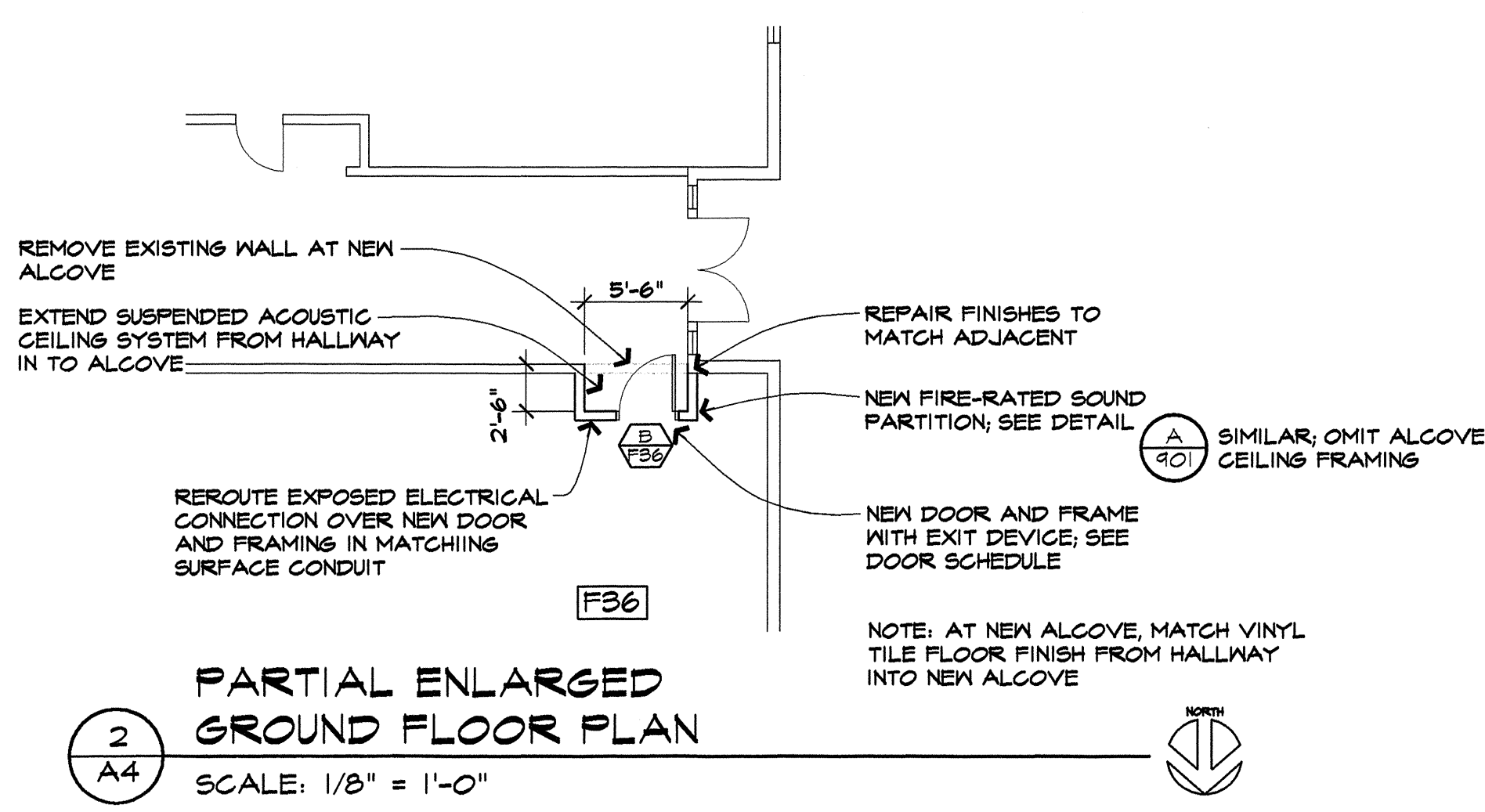
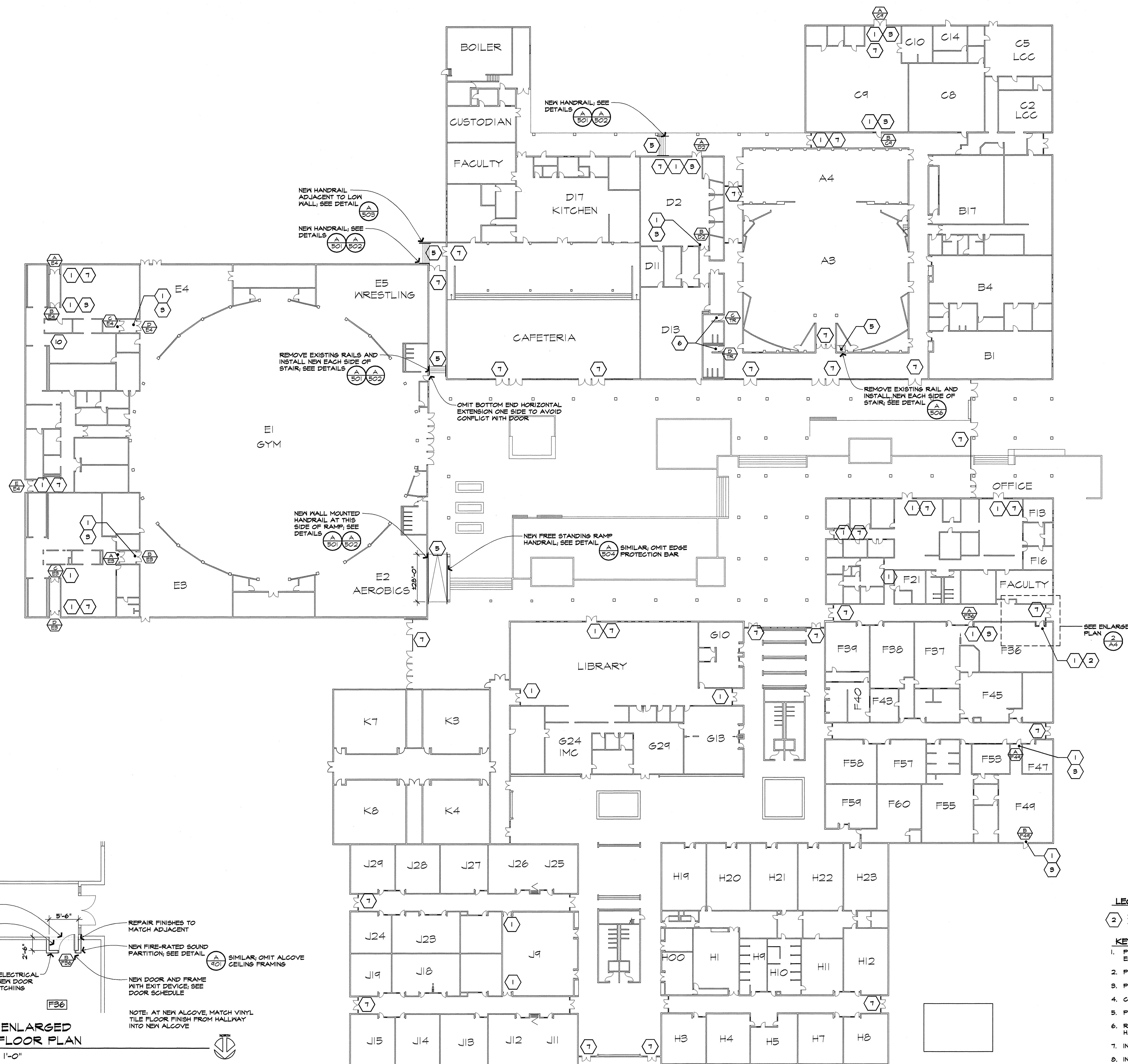
**FIRE & LIFE SAFETY  
IMPROVEMENTS - 2014**  
EUGENE SCHOOL DISTRICT NO. 4J  
VARIOUS SCHOOLS  
EUGENE OREGON  
CIP #420684.702

**gLas**  
Architects, LLC COPYRIGHT 2014

CHURCHILL  
HIGH SCHOOL

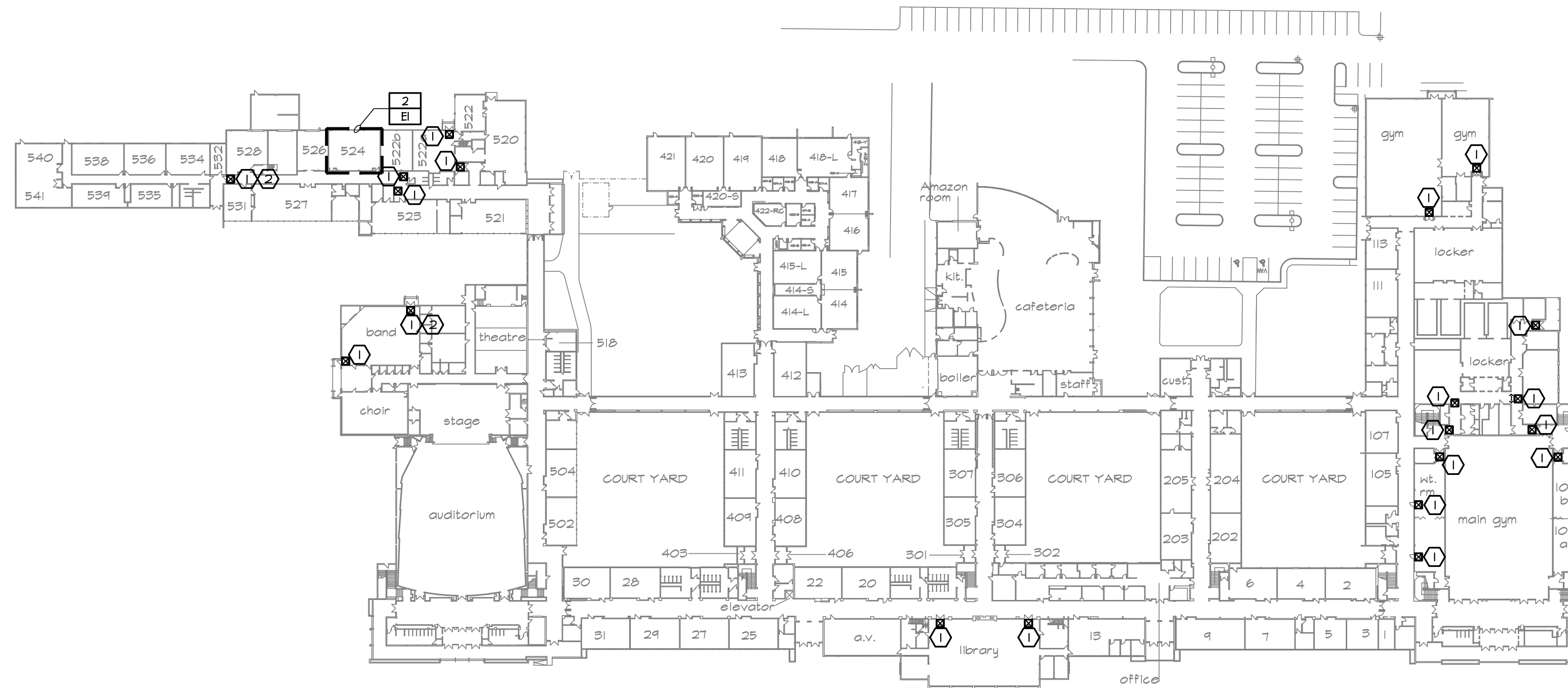
PROJECT NUMBER  
**11041** DATE  
**4/1/14**

**A4**



**1**  
**A4** GROUND FLOOR PLAN  
SCALE: NOT TO SCALE

- LEGEND**
- ② DENOTES NUMBERED KEY NOTE BELOW - NOT ALL NOTES USED AT EACH SITE
- KEYNOTES**
1. PROVIDE ILLUMINATED EXIT SIGNAGE - SEE ELECTRICAL
  2. PROVIDE NEW DOOR
  3. PROVIDE EXIT DEVICE TO (E) DOOR
  4. CREATE EXIT PASSAGE TO CORRIDOR
  5. PROVIDE HANDRAIL
  6. REPLACE DEADBOLT WITH LATCHING HARDWARE
  7. INSTALL TACTILE EXIT SIGNAGE; SEE DETAILS (A1001) (A1002) (A1003)
  8. INSTALL COORDINATOR AND CLOSER
  9. INSTALL HANDRAIL EXTENSIONS OR REPLACE HANDRAIL
  10. REMOVE OVERHEAD DOORS
  11. INSTALL EGRESS LIGHTING
  12. REMOVE EXISTING DOOR(S) AND FRAME; REPLACE WITH NEW DOOR(S) AND FRAME IN NEW PARTITION WALL TO REVERSE DOOR SWING
  13. REMOVE OVERHEAD COILING GRILLE



1 SOUTH EUGENE HIGH SCHOOL - GROUND FLOOR PLAN  
SCALE: 1/64" = 1'-0"

REFERENCE NOTES:

- 1 PROVIDE DISTRICT STANDARD EXIT SIGN, LITHONIA LV5KH-R-130/ZTH-1M-EL-NL-SQ. CONFIRM WITH OWNER PRIOR TO ORDERING. CIRCUIT NEW EXIT SIGN TO NEAREST UN-SWITCHED LIGHTING CIRCUIT.
- 2 REMOVE EXISTING EXIT SIGN. REPLACE WITH NEW. PATCH AND PAINT WALL TO MATCH ADJACENT SURFACES.
- 3 REROUTE SURFACE RACEWAY TO AVOID NEW CONSTRUCTION.
- 4 RELOCATE EXISTING INTERCOM CALL BUTTON, INTERCOM SPEAKER, AND LIGHT SWITCHES. COORDINATE NEW LOCATION WITH ARCHITECT.

SYMBOLS AND ABBREVIATIONS LEGEND

**LIGHT FIXTURES**

AI	FIXTURE IDENTIFIER. FIXTURE TYPE "AI" SEE LIGHTING FIXTURE SCHEDULE.
	SURFACE MOUNT FLUORESCENT - DRAWN TO SCALE WHERE POSSIBLE
	RECESSED FLUORESCENT
	RECESSED FLUORESCENT - SHADING INDICATES EMERGENCY BATTERY BALLAST (APPLIES TO ALL LUMINAIRES)
	UNIVERSAL MOUNT EXIT LIGHT, SHADED SIDE INDICATES FACE OR FACES.
	EMERGENCY LIGHTING RELAY

**GENERAL**

	EQUIPMENT IDENTIFIER, EXHAUST FAN I SHOWN
	SHEET REFERENCE NOTE
	PLAN OR DETAIL NUMBER, SHEET NUMBER
	ROOM NUMBER
	EXISTING WORK SHOWN LIGHT
	NEW WORK SHOWN BOLD
	EXISTING TO BE REMOVED

**POWER**

SWITCH: '3' = CIRCUITS CONTROLLED, 'K' = KEY SWITCH, 'P' = W/PILOT LIGHT, '2' = DOUBLE POLE, '3' = THREE-WAY, 'N' = AUTOMATIC WALL SWITCH, 'D' = DIMMING SWITCH 'TS' = DIGITAL TIMER SWITCH

**INTERCOM**

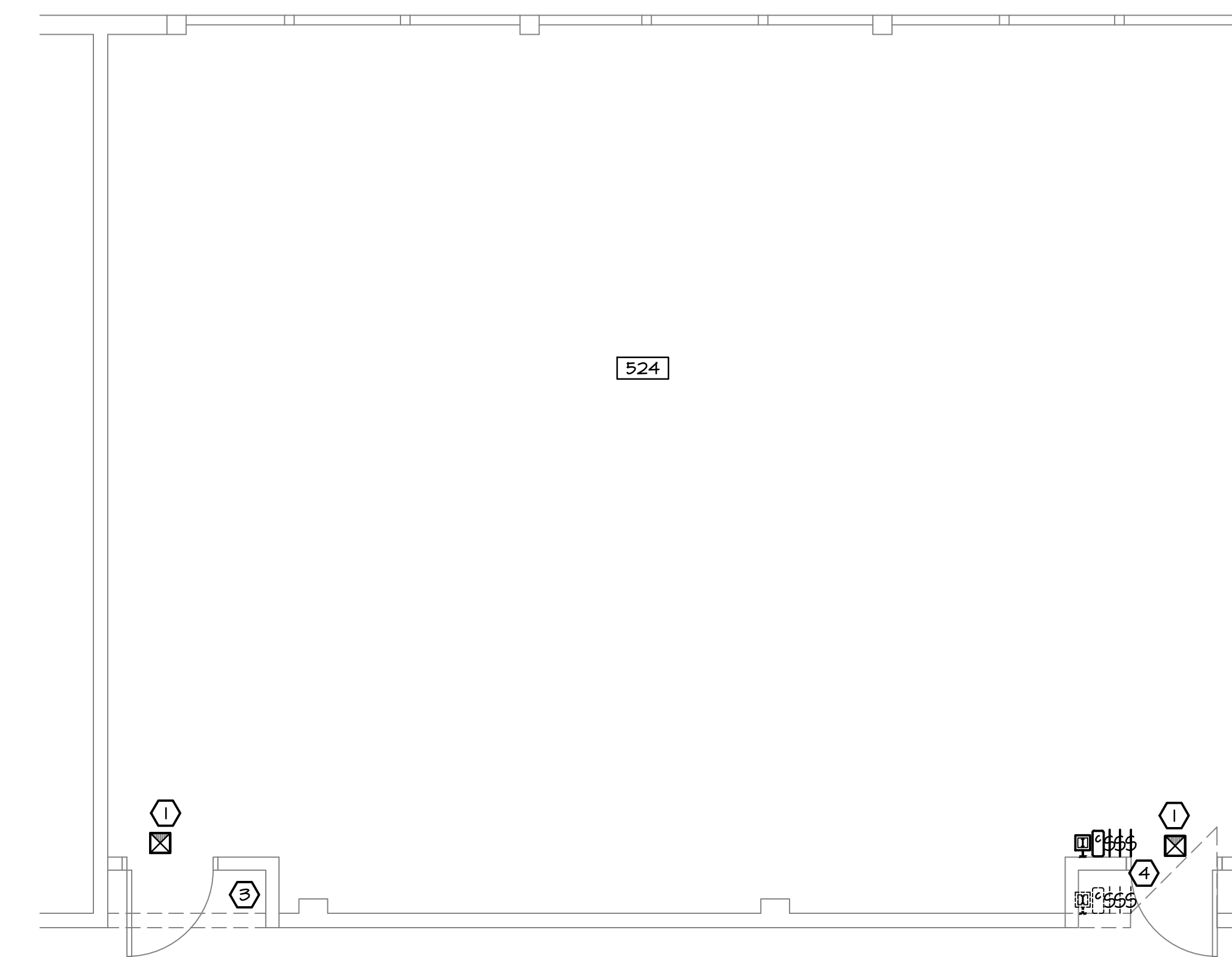
SURFACE WALL MOUNTED SQUARE SPEAKER

SWITCH/CALL STATION

**ABBREVIATIONS**

AFF	ABOVE FINISHED FLOOR	IDF	INTERMEDIATE DISTRIBUTION FRAME
BLDG	BLDG	L.V.	LOW VOLTAGE
C	CONDUIT	MDF	MAIN DISTRIBUTION FRAME
cd	CANDELA	MECH	MECHANICAL
CKT	CIRCUIT	N	NEW
DM	ON-IOV DIMMING	PAN	PANEL
DSP	DIGITAL SIGNAL PROCESSOR	PRS	PROGRAM RAPID START
E	EXISTING	SNBD	SWITCHBOARD
ELEC	ELECTRICAL	TTB	TELEPHONE TERMINAL BOARD
EMERG	EMERGENCY	TVSS	TRANSIENT VOLTAGE SURGE SUPPRESSION
FAM	FIRE ALARM MASTER	TYP	TYPICAL
GFI	GROUND FAULT INTERRUPTER	WS	WINDSHIELD
GND	GROUND	WP	WEATHERPROOF
HVAC	HEATING, VENTILATING, & AIR CONDITIONING		

- GENERAL NOTES:**
1. THE FACILITY WILL REMAIN IN OPERATION DURING CONSTRUCTION. COORDINATE ALL SHUTDOWNS AND CONSTRUCTION ACTIVITY WITH FACILITIES STAFF.
  2. SIZE AND LOCATION OF ALL EXISTING ELECTRICAL EQUIPMENT IS APPROXIMATE. CONTRACTOR SHALL SITE VERIFY THE EXACT LOCATION OF EXISTING AND CONSTRUCT ALL WORK FROM FIELD DIMENSIONS. CONTRACTOR SHALL MAKE ADJUSTMENTS NECESSARY TO ACCOMMODATE MINOR DEVIATIONS AT NO COST TO OWNER.
  3. LIGHT LINE WORK INDICATES EXISTING ELECTRICAL CIRCUITRY AND OTHER ELECTRICAL EQUIPMENT. DASHED LINE WORK INDICATES ELECTRICAL DEVICES AND EQUIPMENT TO BE REMOVED.
  4. WHERE EXISTING EQUIPMENT IS REMOVED AND NOT REPLACED IN THE SAME LOCATION, PATCH AND PAINT SURFACES TO MATCH ORIGINAL CONDITION.
  5. REMOVE ALL ABANDONED RACEWAY AND WIRING.
  6. RECONNECT ALL CIRCUITRY TO REMAINING DEVICES AND EQUIPMENT.



2 SOUTH EUGENE HIGH SCHOOL - GROUND FLOOR PLAN  
SCALE: 1/4" = 1'-0"



CONSULTANTS

**SYSTEMS WEST ENGINEERS, INC.**

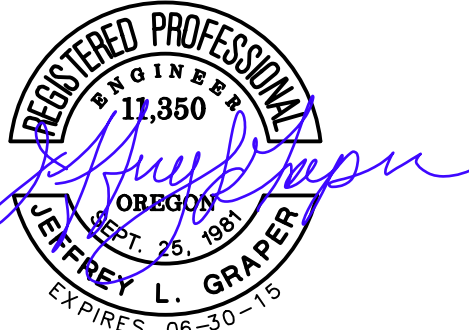
411 HIGH STREET  
EUGENE, OREGON 97401-0427  
Phone: 541-362-7210  
Fax: 541-362-7222  
www.systemswestengineers.com

FIRE & LIFE-SAFETY  
 IMPROVEMENTS - 2014  
 EUGENE SCHOOL DISTRICT 4J  
 VARIOUS SITES  
 EUGENE, OREGON  
 CIP # 420.684.702

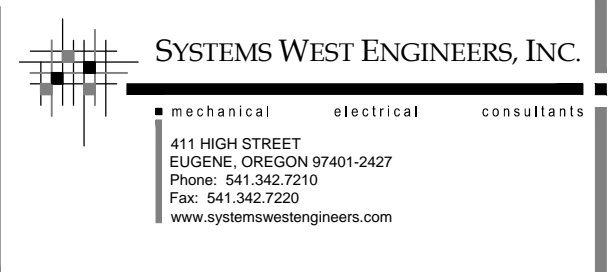
gLas Architects, LLC COPYRIGHT 2014	

**SOUTH EUGENE HIGH SCHOOL & ELECTRICAL LEGEND**

PROJECT NUMBER 11041	DATE 4/01/14
-------------------------	-----------------

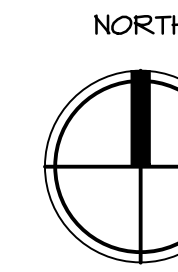
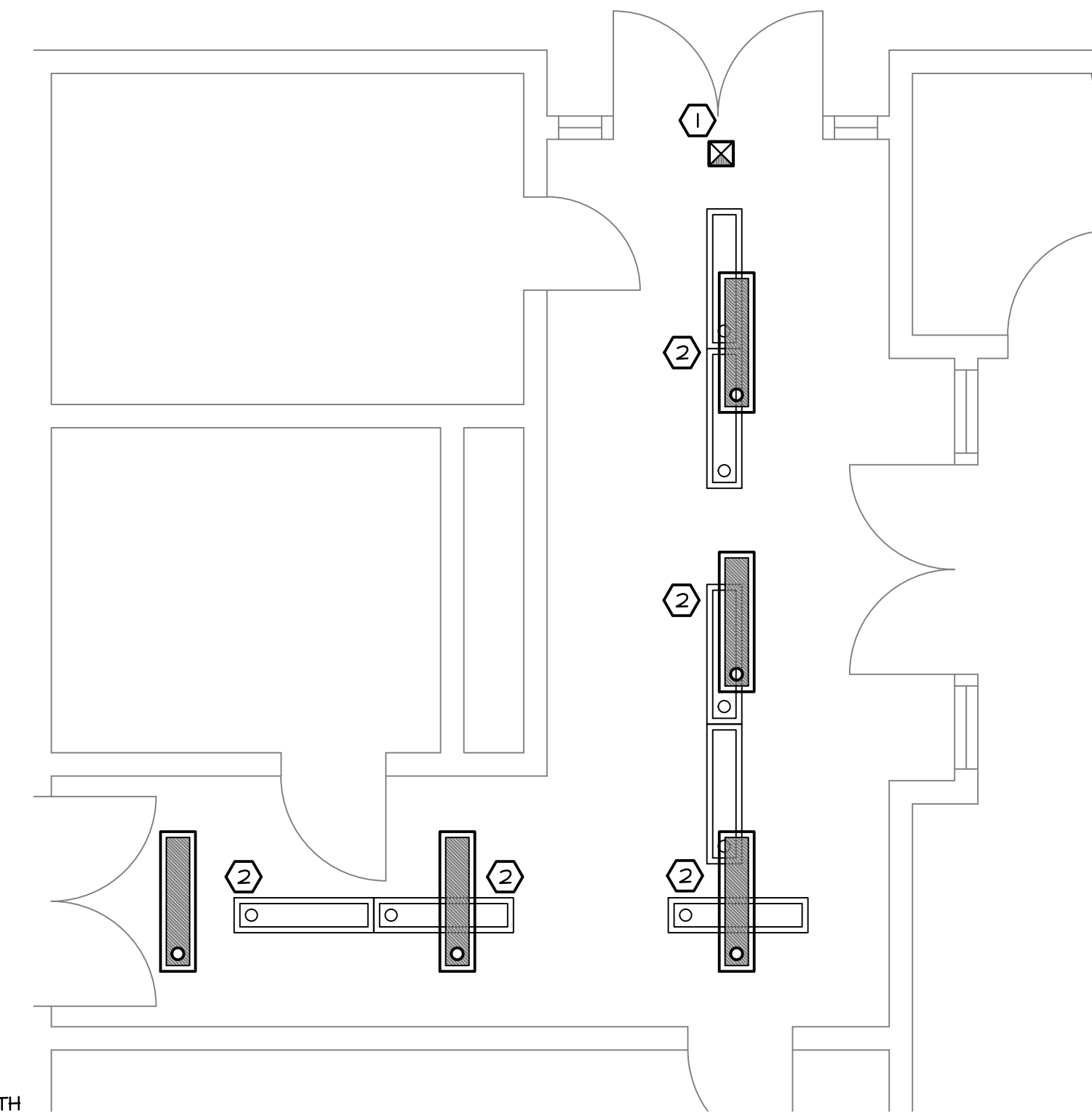


CONSULTANTS

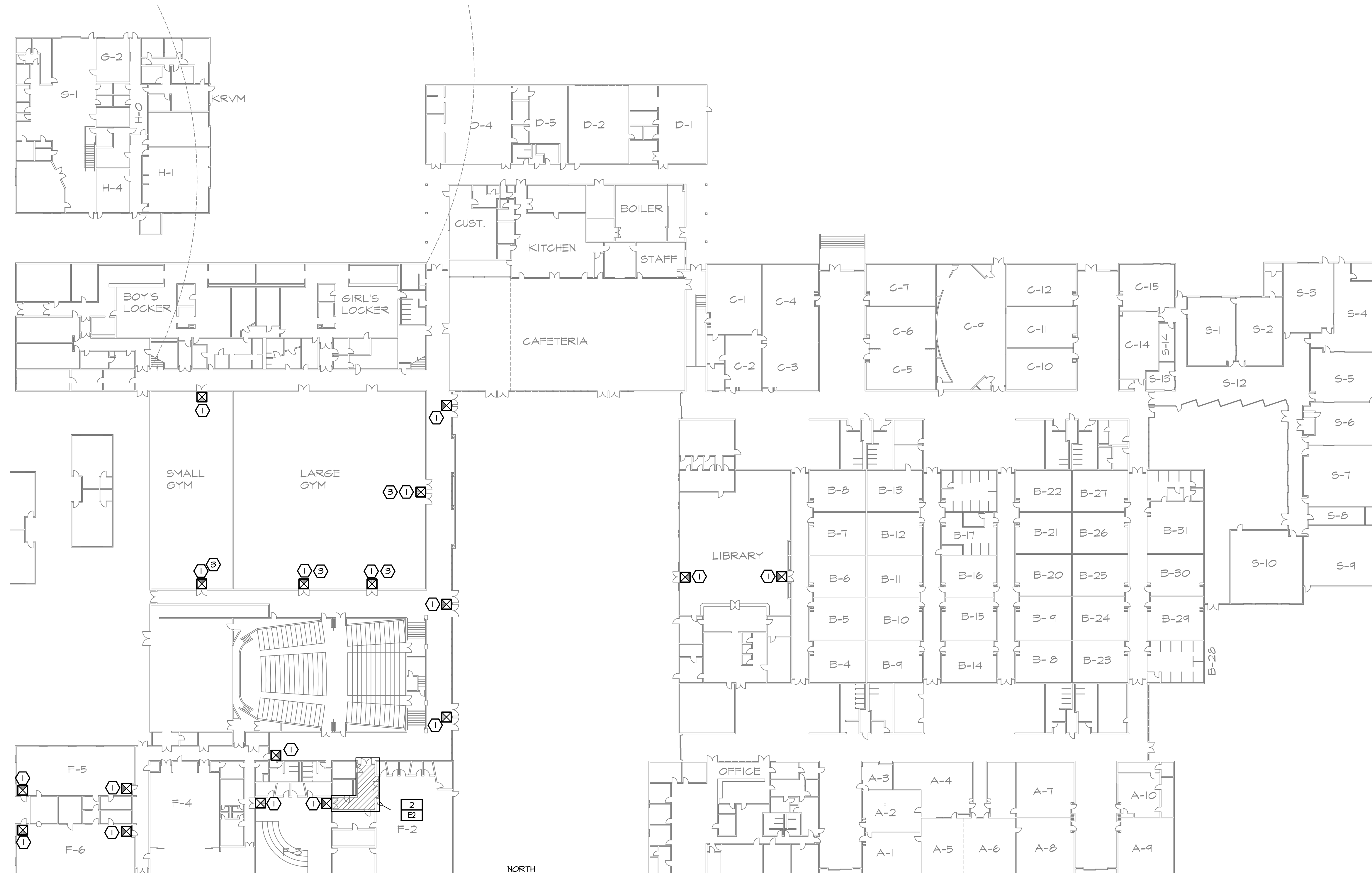


**REFERENCE NOTES:**

- ① PROVIDE DISTRICT STANDARD EXIT SIGN, LITHONIA LV5H-R-120/27H-M-EL-N-50. CONFIRM WITH OWNER PRIOR TO ORDERING. CIRCUIT NEW EXIT SIGN TO NEAREST UN-SWITCHED LIGHTING CIRCUIT.
- ② REMOVE EXISTING LUMINAIRE AND RETURN TO OWNER. PROVIDE NEW SURFACE MOUNTED WRAPAROUND, METALUX HE232-A (UV-EL-EB2), LAMPS TO BE 5000K CCT. CIRCUIT NEW LUMINAIRE TO EXISTING LIGHTING CIRCUIT THAT SERVED EXISTING LUMINAIRES. CONNECT EMERGENCY BATTERY PACKS TO UN-SWITCHED LIGHTING CIRCUIT. MAINTAIN EXISTING SWITCHING.
- ③ REMOVE EXISTING EXIT SIGN, REPLACE WITH NEW. PATCH AND PAINT WALL TO MATCH ADJACENT SURFACES.



**2** SHELDON HIGH SCHOOL - ENLARGED CORRIDOR PLAN  
SCALE: 1/4" = 1'-0"



**1** SHELDON HIGH SCHOOL - GROUND FLOOR PLAN  
SCALE: 1/32" = 1'-0"

**FIRE & LIFE-SAFETY  
IMPROVEMENTS - 2014**  
EUGENE SCHOOL DISTRICT 4J  
VARIOUS SITES  
EUGENE, OREGON

CIP # 420.684.702

**SHELDON  
HIGH SCHOOL**

PROJECT NUMBER <b>11041</b>	DATE <b>4/01/14</b>
--------------------------------	------------------------

REFERENCE NOTES:

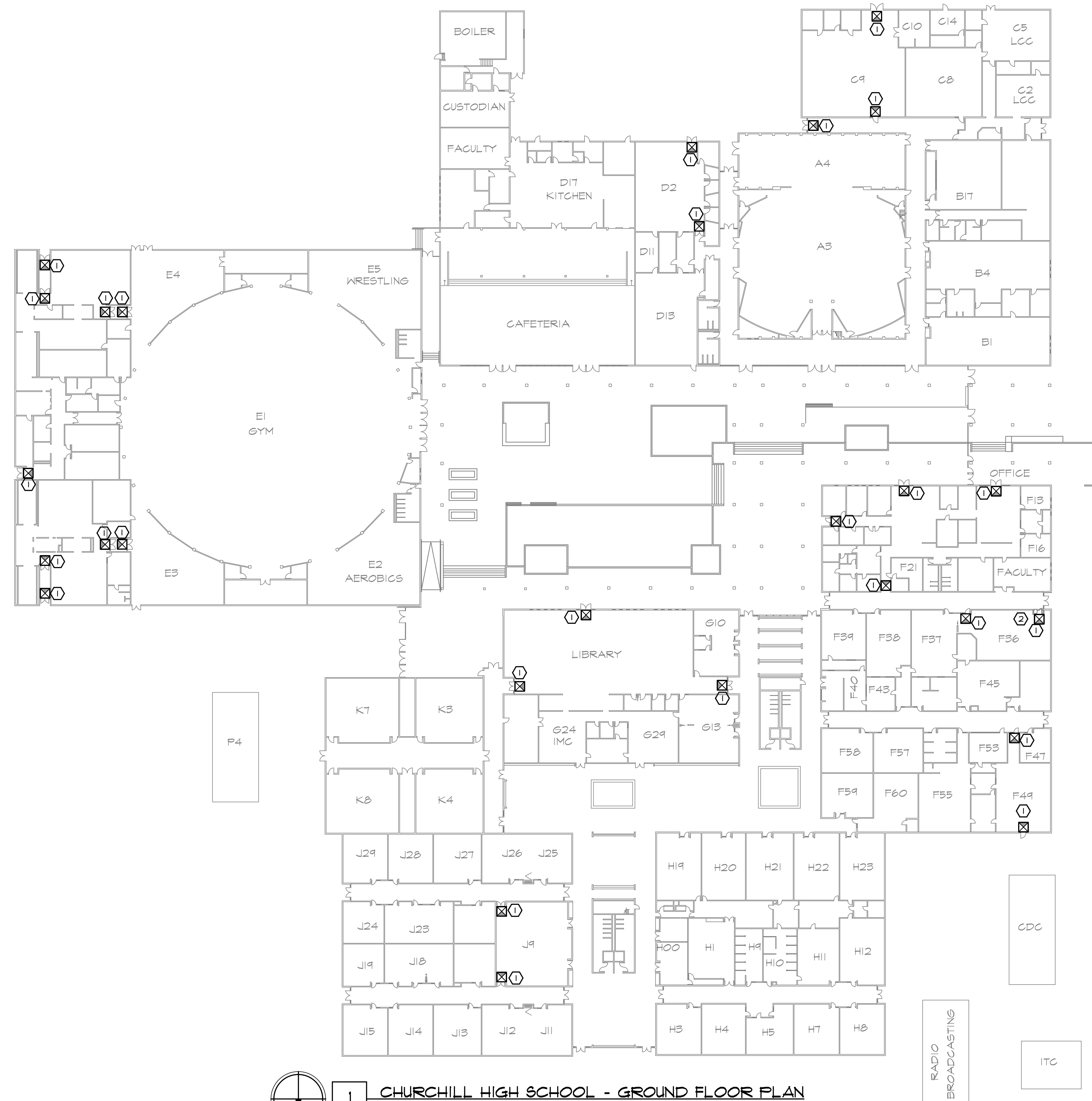
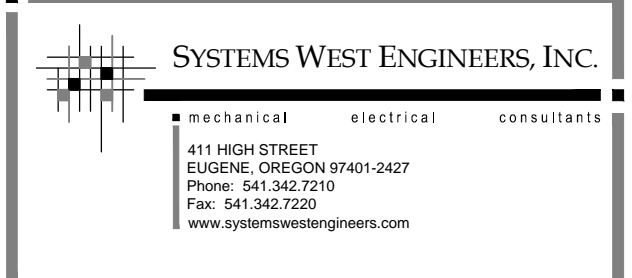
- ① PROVIDE DISTRICT STANDARD EXIT SIGN, LITHONIA LV5KH-R-120/2714M-EL-N-50. CONFIRM WITH OWNER PRIOR TO ORDERING. CIRCUIT NEW EXIT SIGN TO NEAREST UN-SWITCHED STANDBY LIGHTING CIRCUIT.
- ② REROUTE SURFACE RACEWAY TO AVOID NEW CONSTRUCTION.

**gLas**  
Architects, LLC

1415 Pearl Street  
Eugene, Oregon 97401  
541 686-2014  
541 686-2017 fax



CONSULTANTS



**1** CHURCHILL HIGH SCHOOL - GROUND FLOOR PLAN  
SCALE: 1/32" = 1'-0"

**FIRE & LIFE-SAFETY  
IMPROVEMENTS - 2014**  
EUGENE SCHOOL DISTRICT 4J  
VARIOUS SITES  
EUGENE, OREGON

CIP # 420.684.702

**gLas**  
Architects, LLC COPYRIGHT 2014

**CHURCHILL  
HIGH SCHOOL**

PROJECT NUMBER <b>11041</b>	DATE <b>4/01/14</b>
--------------------------------	------------------------

**E3**