

NEW WHEELCHAIR LIFTS - 2014

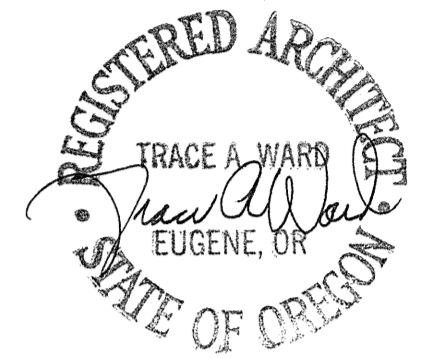
EUGENE SCHOOL DISTRICT 4J
 VARIOUS SITES
 EUGENE OREGON

CIP: #420.578.100
 CIP: #420.170.100

gLas
 Architects, LLC

1415 Pearl Street
 Eugene, Oregon 97401

(541) 686-2014
 (541) 686-2017 fax



CONSULTANTS

NEW WHEELCHAIR LIFTS - 2014
 EUGENE SCHOOL DISTRICT 4J
 SPENCER BUTTE MIDDLE SCHOOL
 EDISON ELEMENTARY SCHOOL
 Eugene, Oregon

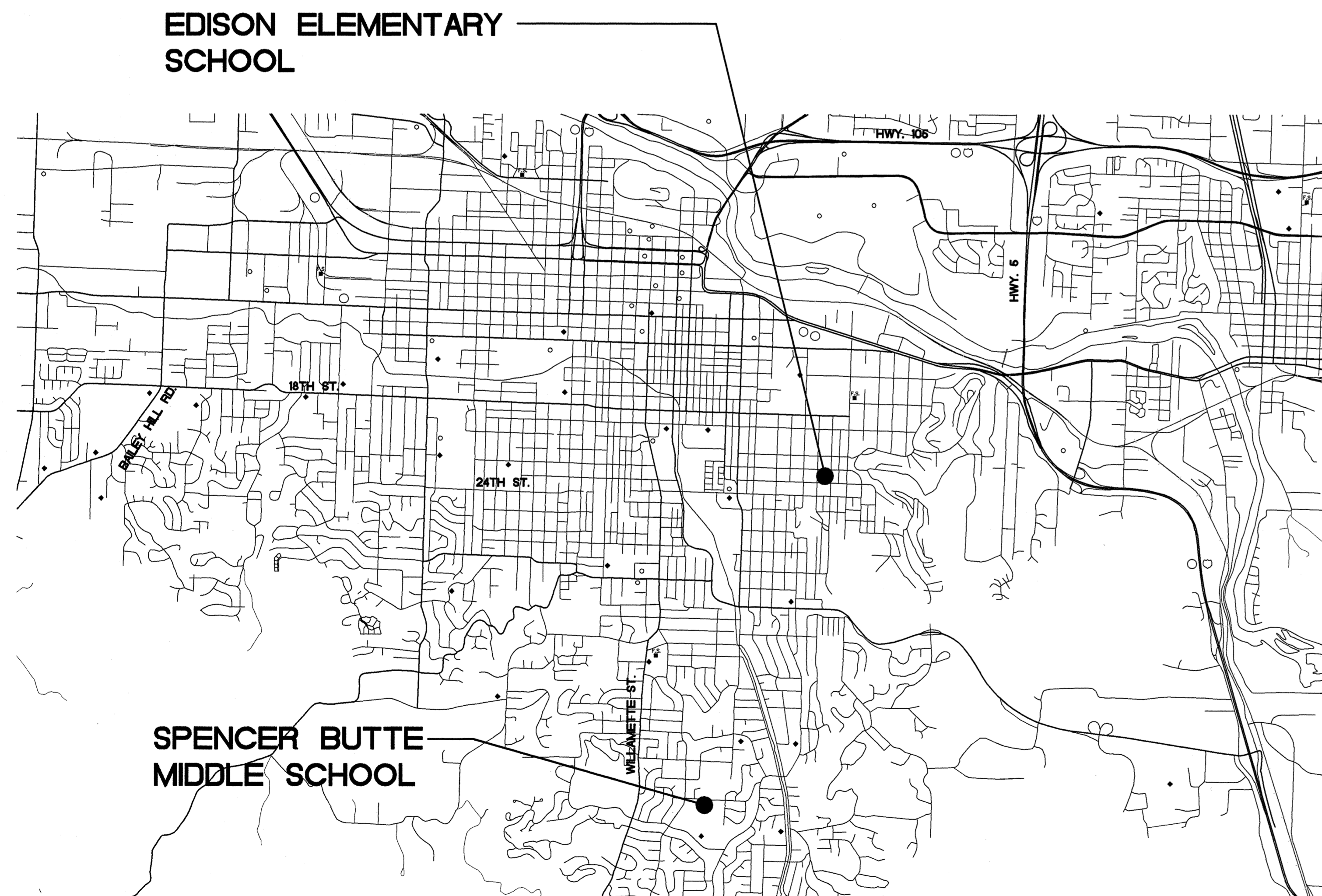
gLas
 Architects, LLC COPYRIGHT 2014

△	REVISED

COVER SHEET
 VICINITY MAP
 DRAWING INDEX

PROJECT NO. 13039	DATE 3/25/14
----------------------	-----------------

A0



1
 A00 VICINITY MAP
 SCALE: NO SCALE



SYMBOLS

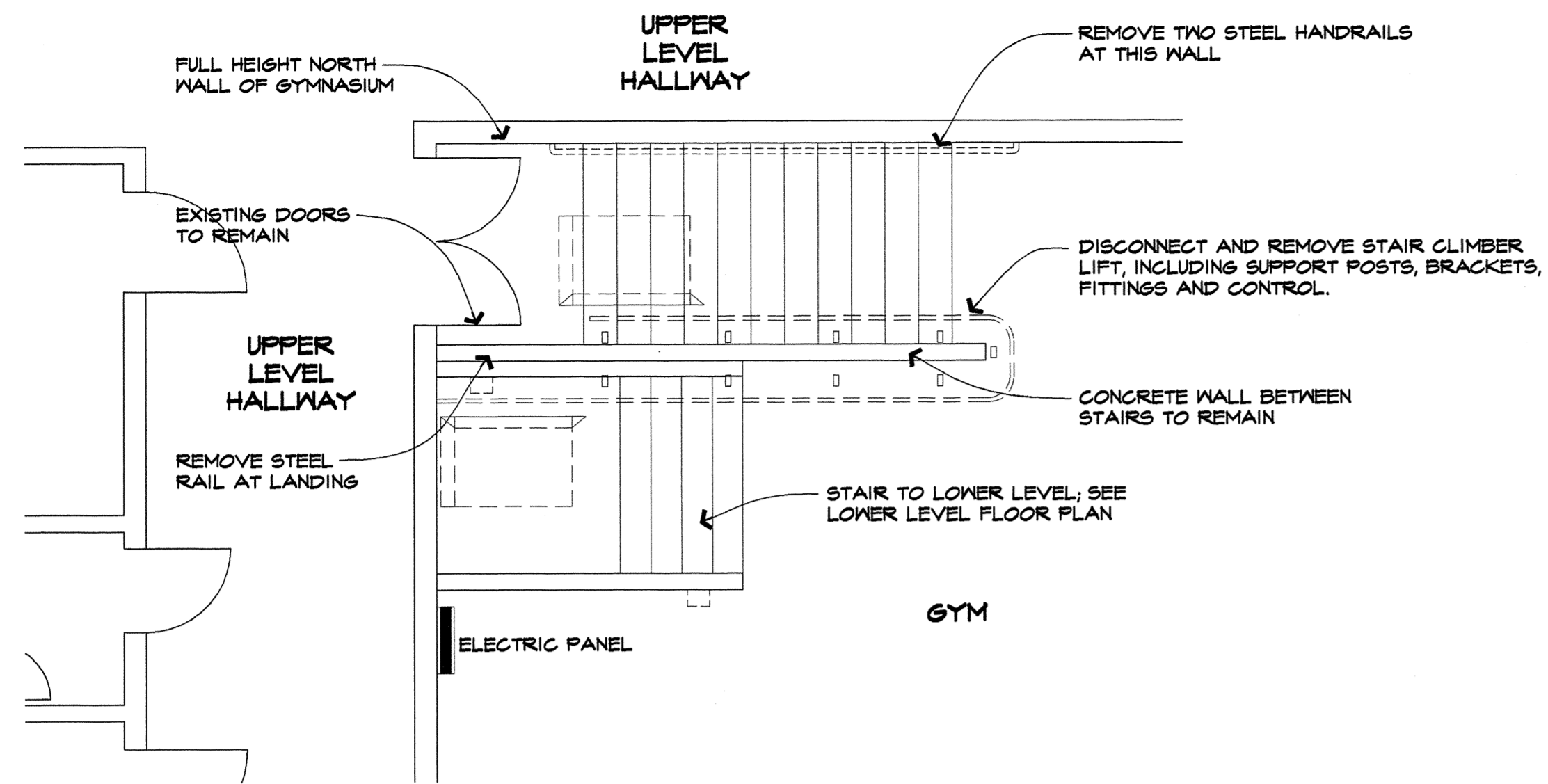
- DRAWING LETTER
DETAIL MARK
DETAIL NO.
- DRAWING LETTER
INTERIOR ELEVATION MARK
SHEET NO.
- DRAWING LETTER
BUILDING SECTION CALLOUT
SHEET NO.
- ROOM
ROOM NAME
ROOM IDENTIFICATION NO.
- DOOR LETTER
DOOR MARK
ROOM NO.
- RELIGHT OR WINDOW TYPE
- KEYED NOTE
- ELEVATION CALLOUT
- REVISION CLOUD
WITH KEYED NOTE

DRAWING INDEX

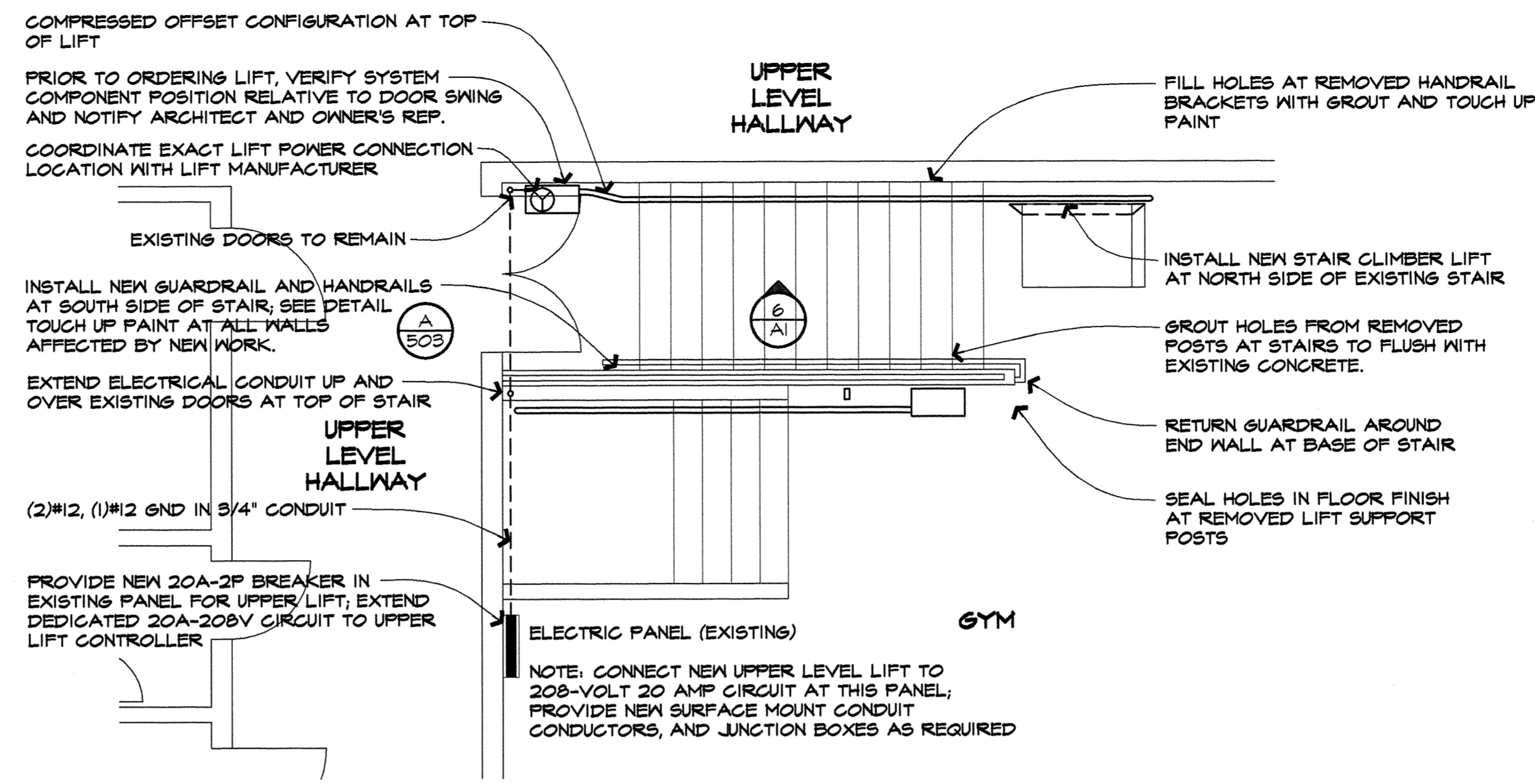
A0 COVER SHEET, DRAWING INDEX,
PROJECT DATA, VICINITY MAP

ARCHITECTURAL DRAWINGS

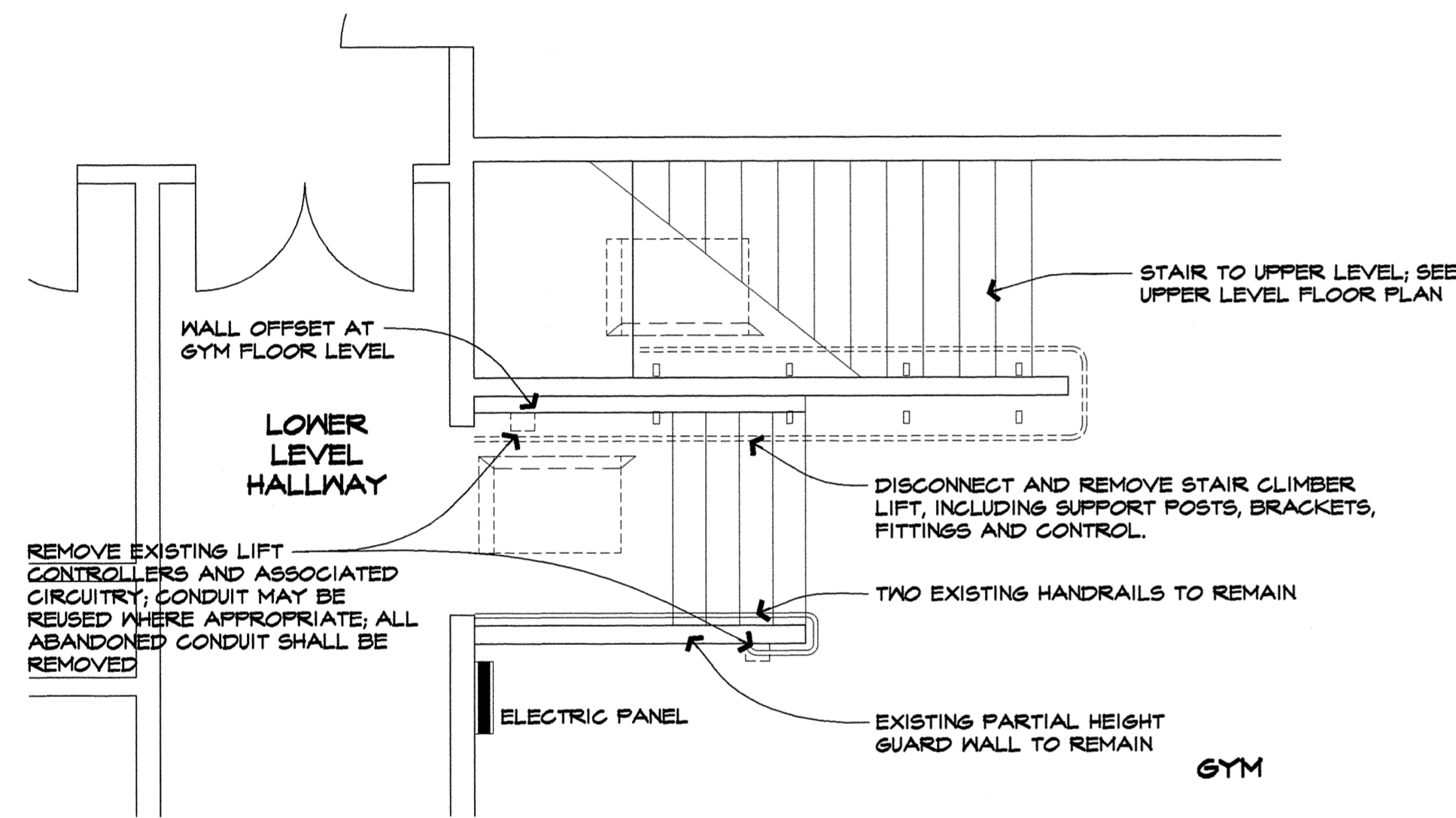
- A1** **Edison Elementary School**
1328 E. 22nd Ave.
Map:187-03-05-13 Tax Lot:08300
- A2** **Spencer Butte Middle School**
500 East 43rd 97405
Map:18-03-17-20 Tax Lot:05500



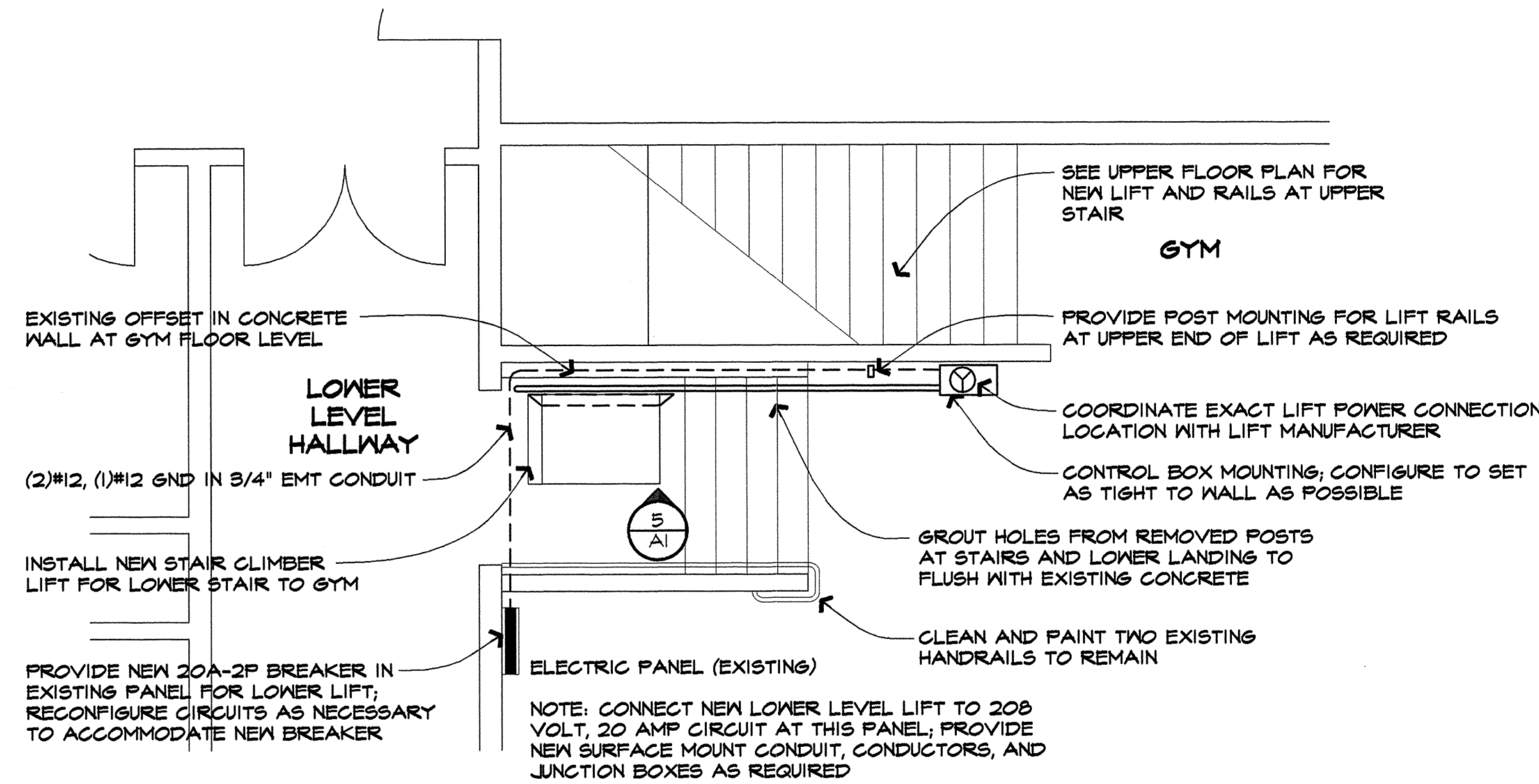
1 PARTIAL UPPER FLOOR PLAN - DEMO - EDISON
SCALE: 1/4" = 1'-0"



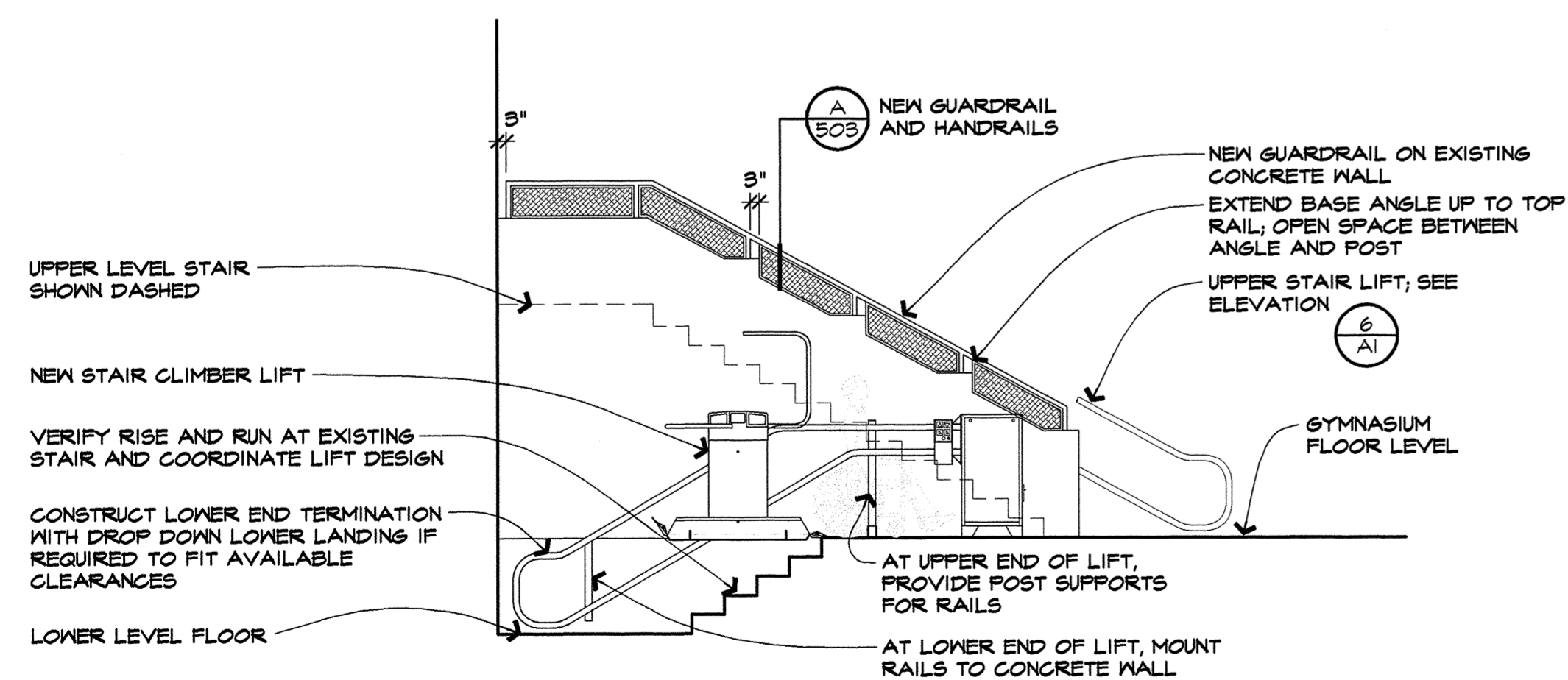
2 PARTIAL UPPER FLOOR PLAN - NEW - EDISON
SCALE: 1/4" = 1'-0"



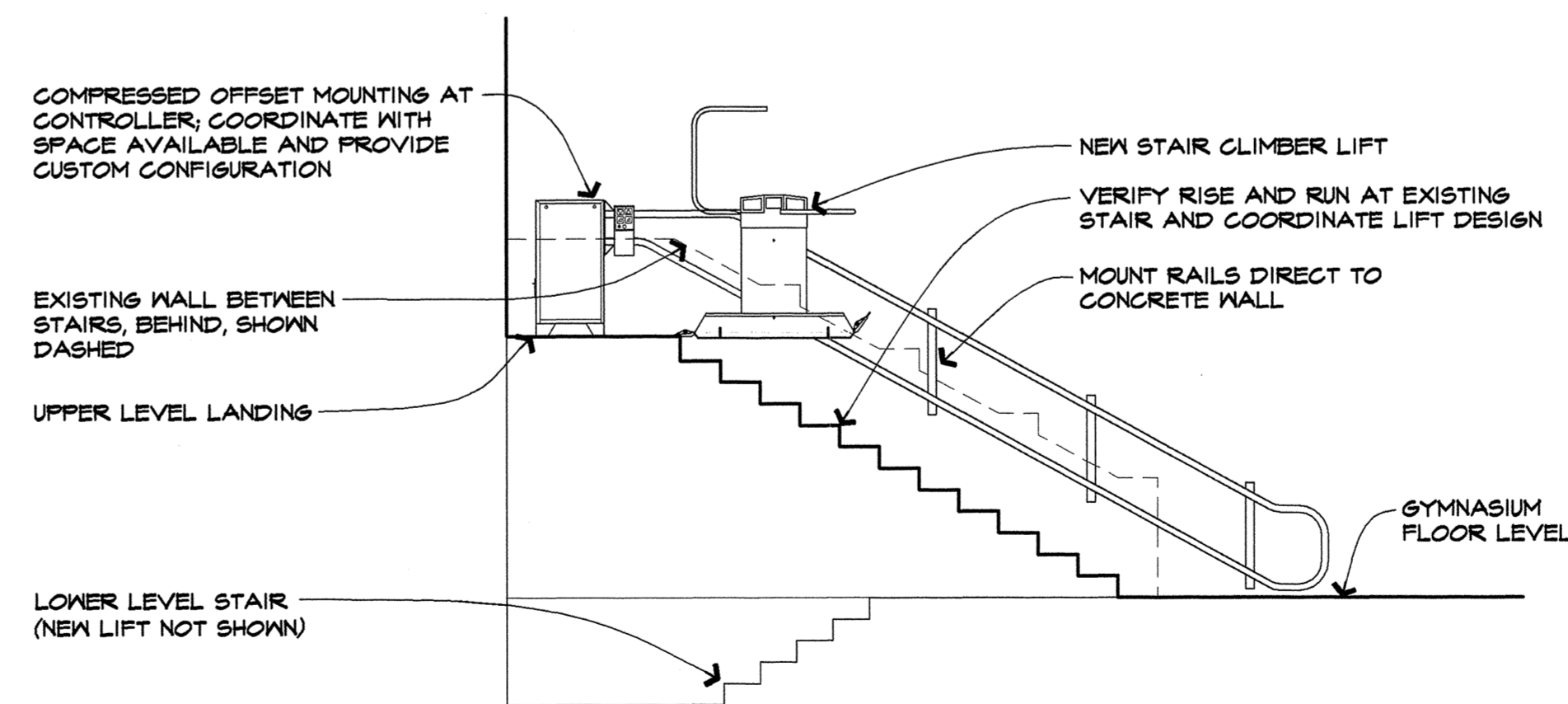
3 PARTIAL LOWER FLOOR PLAN - DEMO - EDISON
SCALE: 1/4" = 1'-0"



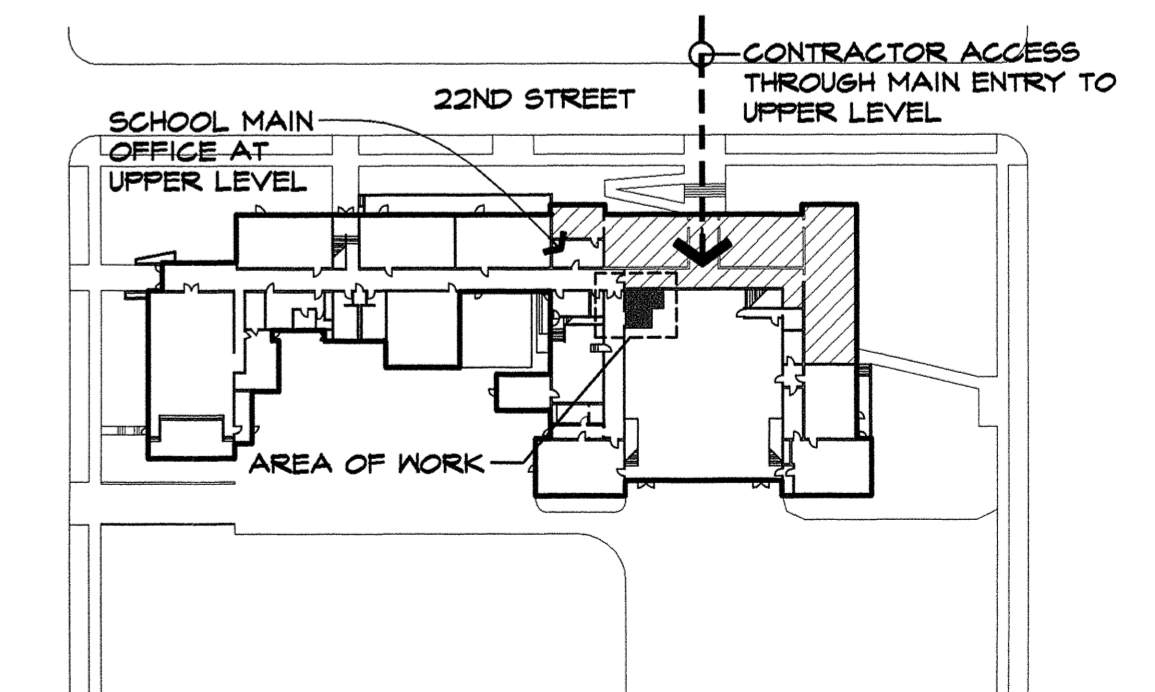
4 PARTIAL LOWER FLOOR PLAN - NEW - EDISON
SCALE: 1/4" = 1'-0"



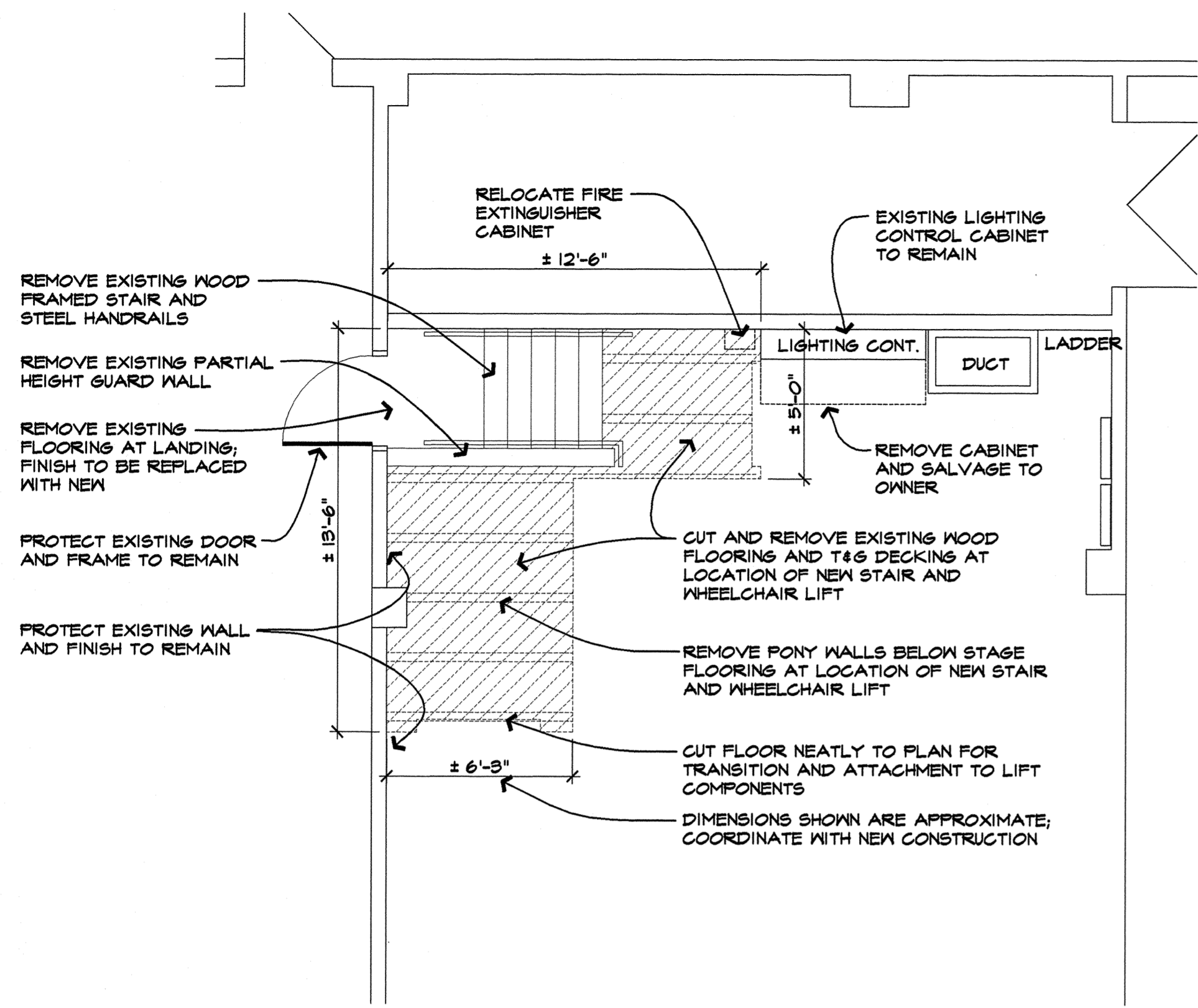
5 WALL ELEVATION AT LOWER STAIR/CHAIR LIFT
SCALE: 1/4" = 1'-0"



5 WALL ELEVATION AT LOWER STAIR/CHAIR LIFT
SCALE: 1/4" = 1'-0"



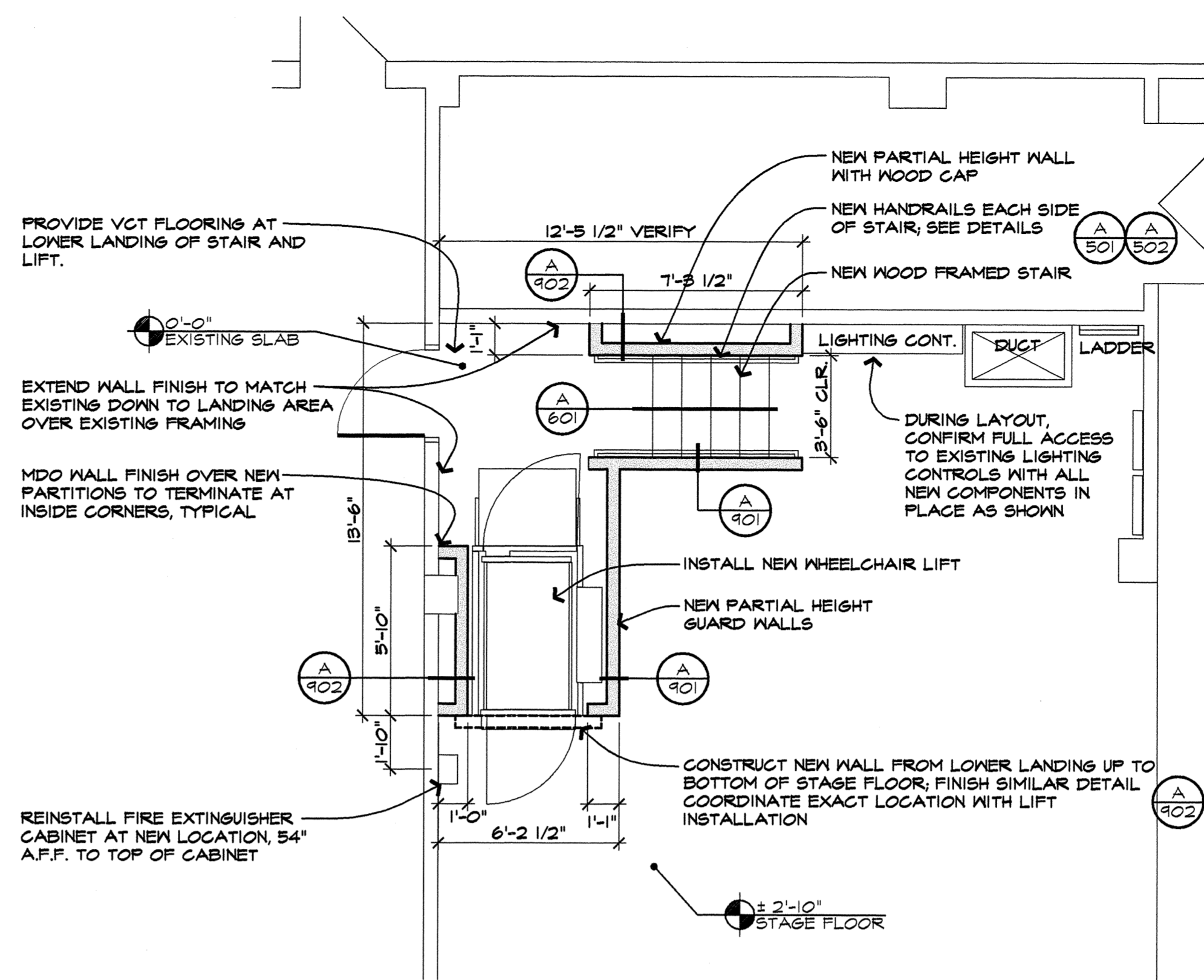
AI KEY PLAN
SCALE: NONE



1
A2 PARTIAL FLOOR PLAN - DEMO - SBMS
SCALE: 1/4" = 1'-0"

GENERAL DEMOLITION PLAN NOTES:

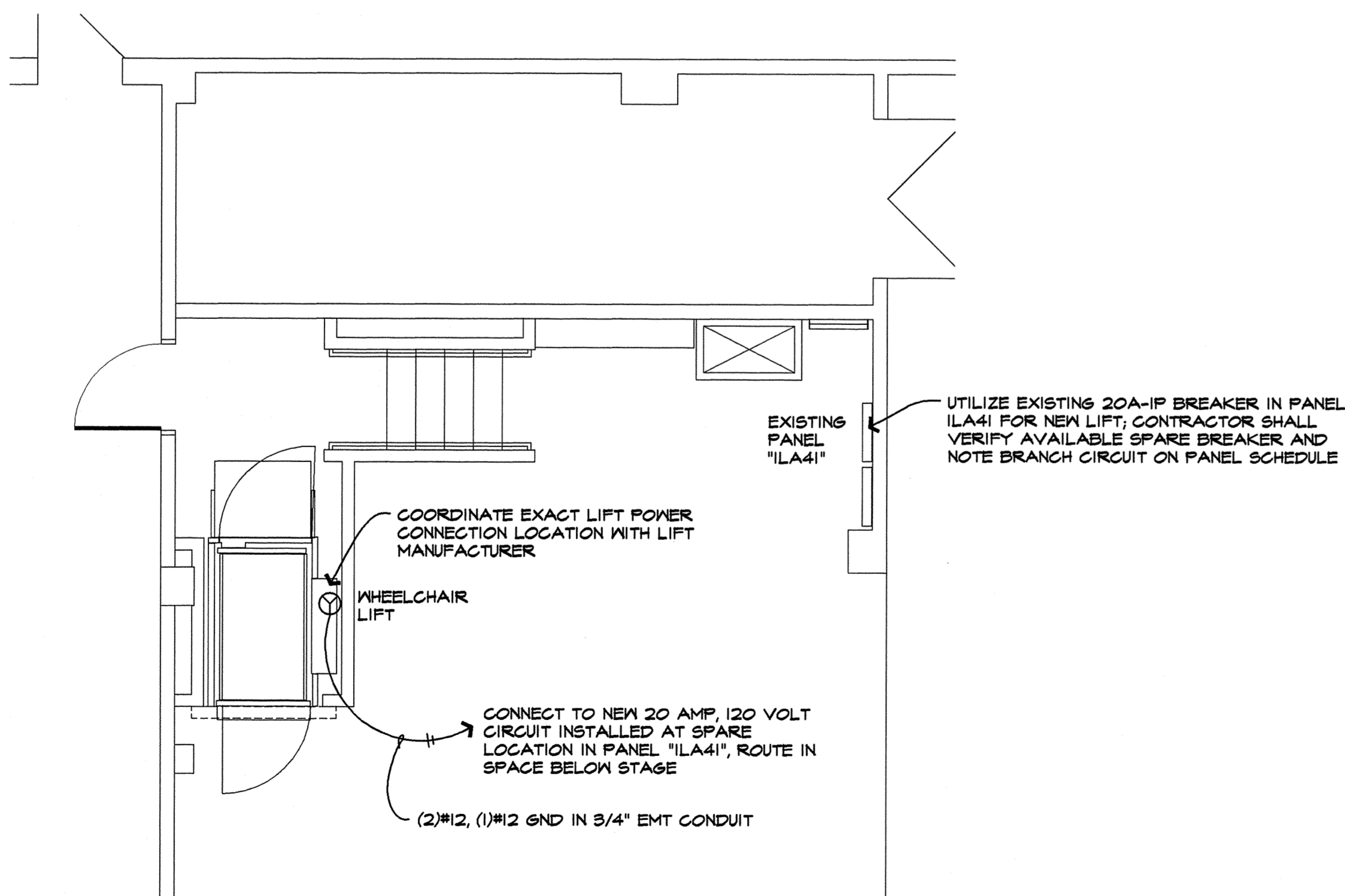
1. PROTECT EXISTING BUILDING ELEMENTS TO REMAIN. PROTECT HALLWAY FINISHES, OPENINGS, YARDS, AND ALL OTHER IMPROVEMENTS IN THE AREA OF DEMOLITION AND ALONG THE PATH AVAILABLE FOR DEBRIS REMOVAL.
2. USE CAUTION DURING REMOVAL OF LOAD BEARING ELEMENTS AND PROVIDE SHORING AS REQUIRED TO SUPPORT LOADS.
3. DEMOLITION PLAN IS PROVIDED FOR CONTRACTOR CONVENIENCE. CONTRACTOR SHALL VISIT THE SITE AND VERIFY EXISTING CONDITIONS PRIOR TO BIDDING. COMPLETE ALL DEMOLITION WORK REQUIRED TO INSTALL NEW COMPONENTS WHETHER OR NOT THE WORK IS SPECIFICALLY INDICATED ON DEMOLITION PLAN.
4. COORDINATE DEMOLITION WORK WITH WORK SHOWN ON ELECTRICAL PLANS. CUT AND PATCH EXISTING ELEMENTS WHERE REQUIRED TO PERFORM WORK WITHIN BUILDING CAVITIES OR OTHER INACCESSIBLE SPACES.



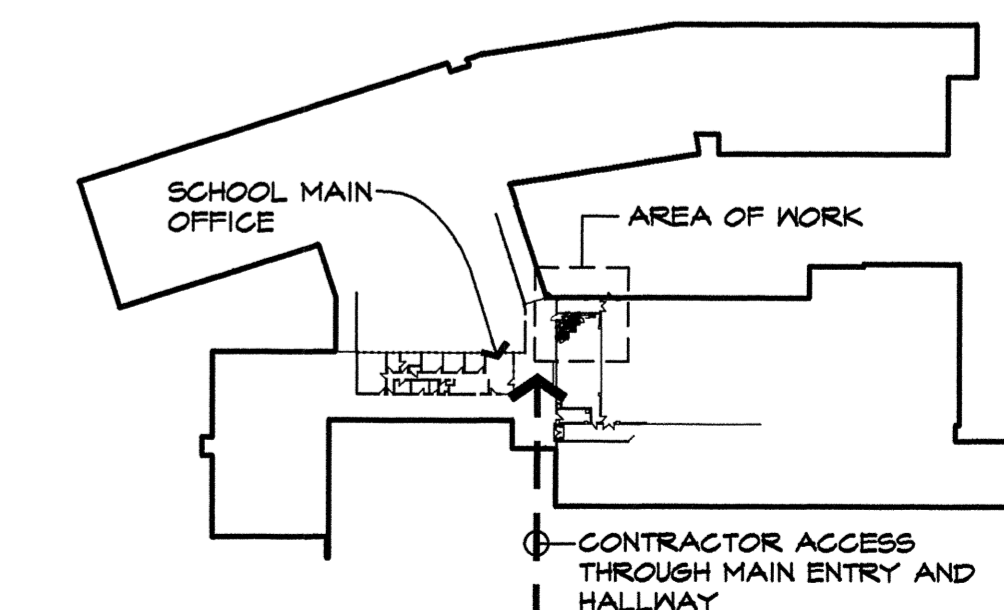
2
A2 PARTIAL FLOOR PLAN - NEW - SBMS
SCALE: 1/4" = 1'-0"

GENERAL NEW PLAN NOTES:

1. VERIFY ALL DIMENSIONS AND COORDINATE WITH NEW EQUIPMENT SIZE AND CLEARANCE REQUIREMENTS.
2. DIMENSIONS SHOWN ARE TO FACE OF STUD, U.N.O. WHERE DIMENSION IS INDICATED AS "CLR" OR CLEAR, THEN DIMENSION SHALL BE CLEAR TO FACE OF FINISH SURFACE.



3
A2 PARTIAL FLOOR PLAN - POWER AND SIGNAL - SBMS
SCALE: 1/4" = 1'-0"



A2 KEY PLAN
SCALE: NONE

gLas Architects, LLC
 1415 Pearl Street
 Eugene, Oregon 97401
 (541) 686-2014
 (541) 686-2017 fax

REGISTERED ARCHITECT
 TRACE A. WARR
 EUGENE, OR
 STATE OF OREGON
 CONSULTANTS

NEW WHEELCHAIR LIFTS - 2014
 EUGENE SCHOOL DISTRICT 4J
 SPENCER BUTTE MIDDLE SCHOOL
 EDISON ELEMENTARY SCHOOL
 Eugene, Oregon

gLas Architects, LLC COPYRIGHT 2014
 REVISED

SPENCER BUTTE M.S.
 PLANS

PROJECT NO. 13039	DATE 3/25/14
----------------------	-----------------

A2