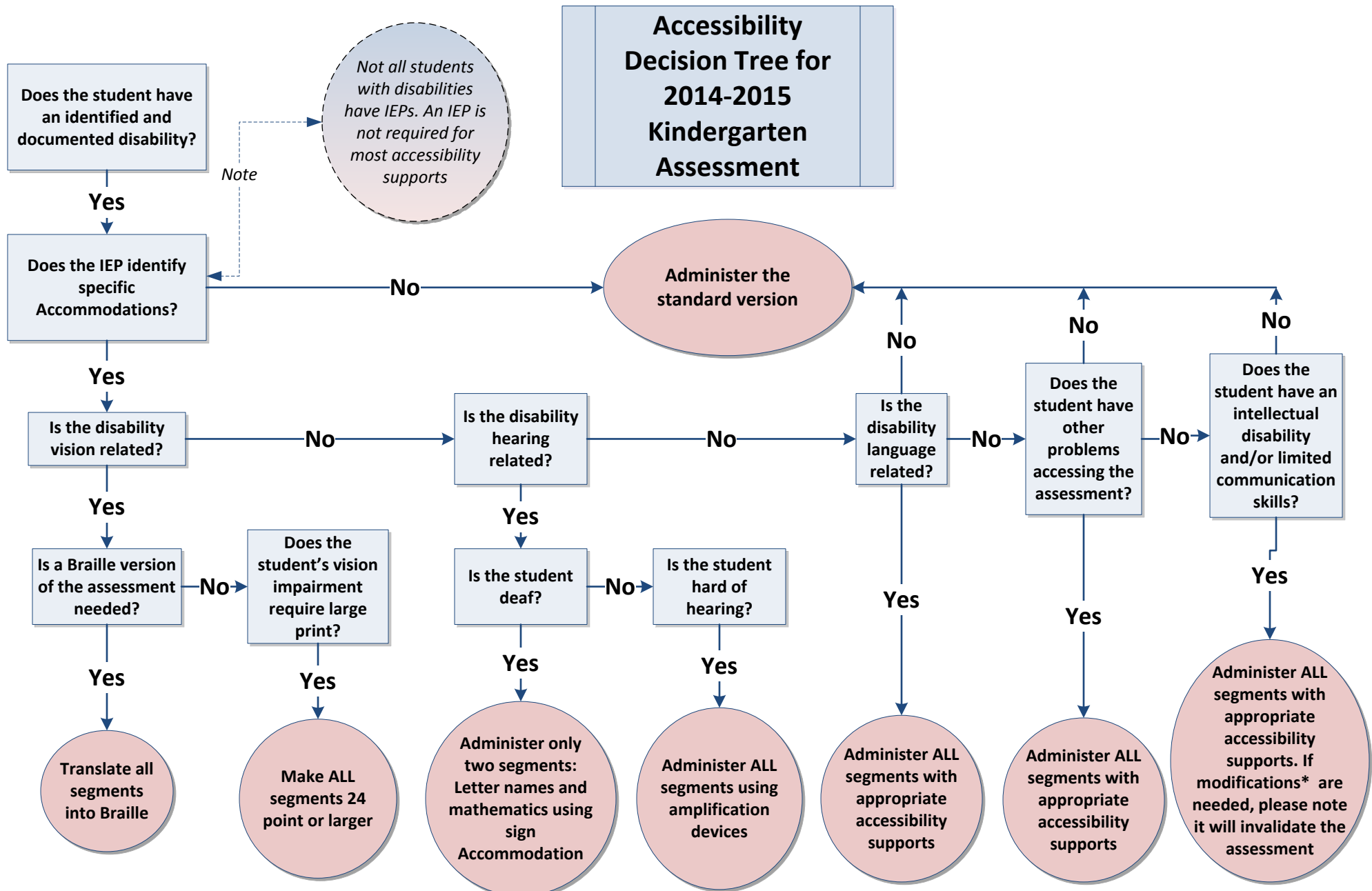


Note: In order to provide a valid and reliable administration of Oregon’s Kindergarten Assessment, it is recommended the school or district team (including the parent or guardian) gather any/all information about the student prior to administering the assessment. For all students, information gathered through school- or district-based protocols (e.g., registration or enrollment forms, entrance interviews) may be useful. For students with disabilities, additional information can be found on their IEP. Having gathered the student information, the attached “Decision Tree for Kindergarten Assessment” is intended to guide teams through the information review and decision making process to identify any accessibility support(s) that would enable the student equitable access to the Kindergarten assessment.



* For additional information, refer to guidance in Section 9 of the 2014-2015 Test Administration Manual and/or the Oregon Accessibility Manual