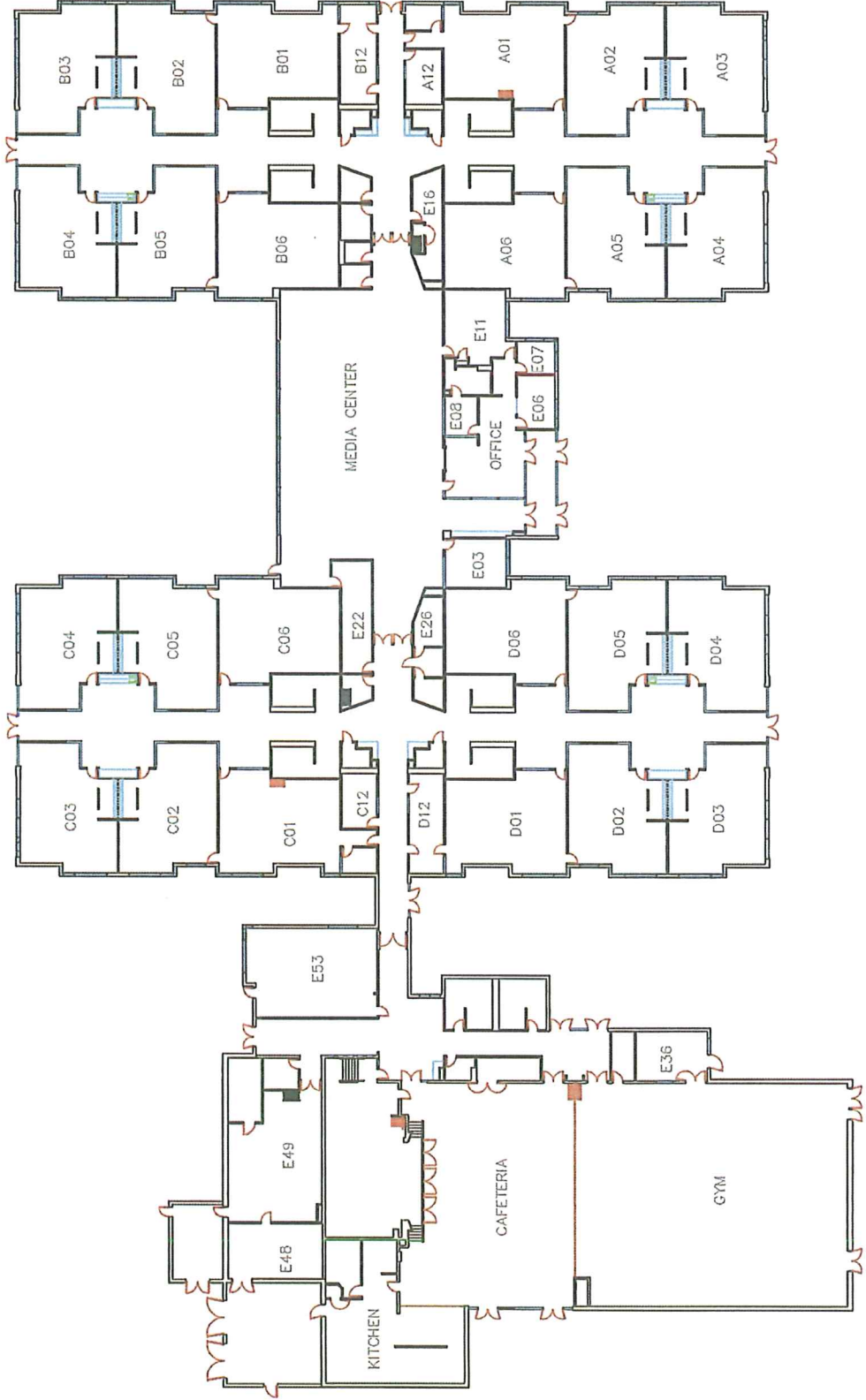


REQUEST FOR PROPOSALS
For
Architectural Services for Four New (replacement) Schools

ATTACHMENT C

**Elementary School Floor Plans and Aerial
Photos – Bertha Holt and Cesar Chavez**

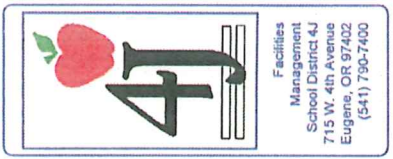
ARCHITECTURAL
AREA PLAN



HOLT ELEMENTARY SCHOOL
770 CALVIN STREET 97401-5399
541-790-6100

SCALE: 1" = 50'
DATE: 08/2004
REV: 1 12-23-08
DRAWN BY A. MAYER

A1



4j Facilities
Management Maps

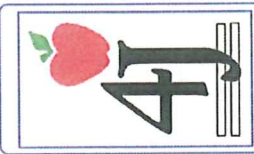
Bertha Holt Elementary School



Produced for School District 4J by
Lane Council of Governments
859 Willamette, Suite 500
Eugene, OR 97401-2910
May 2009

Photographs taken in spring 2008.



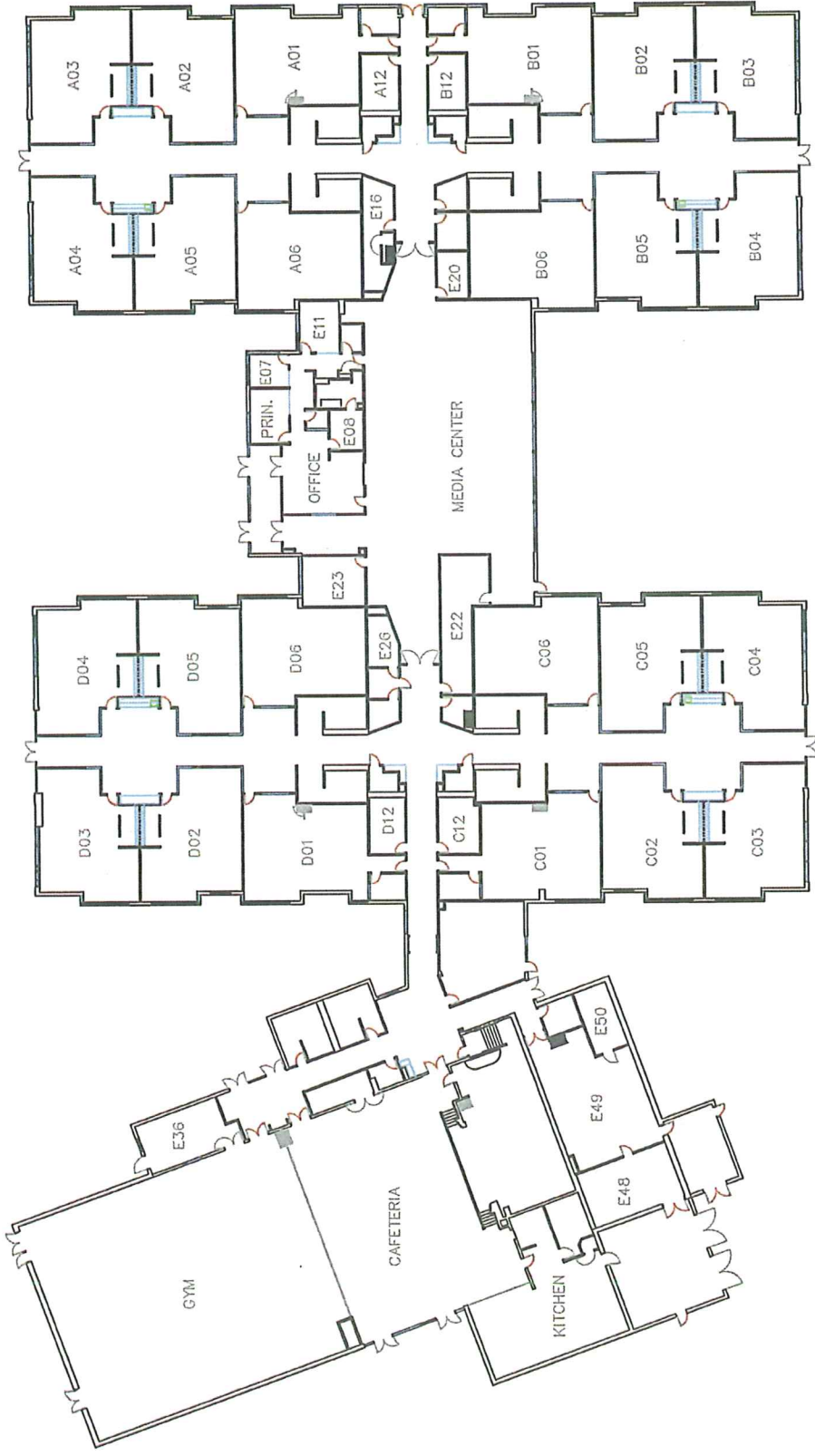


Facilities
Management
School District 4J
715 W. 4th Avenue
Eugene, OR 97402
(541) 790-7400

541-790-5300
1510 WEST 14th AVENUE 97402-3896
CESAR CHAVEZ ELEMENTARY

SCALE: 1" = 50'
DATE: Aug. 2004
REV: 1 12-23-08
DRAWN BY A. MAYER

A1



ARCHITECTURAL
AREA PLAN



4j Facilities
Management Maps

Cesar Chavez Elementary School



Produced for School District 4J by
Lane Council of Governments
859 Willamette, Suite 500
Eugene, OR 97401-2910
May 2009

Photographs taken in spring 2008.

