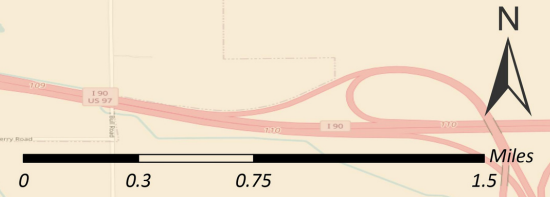
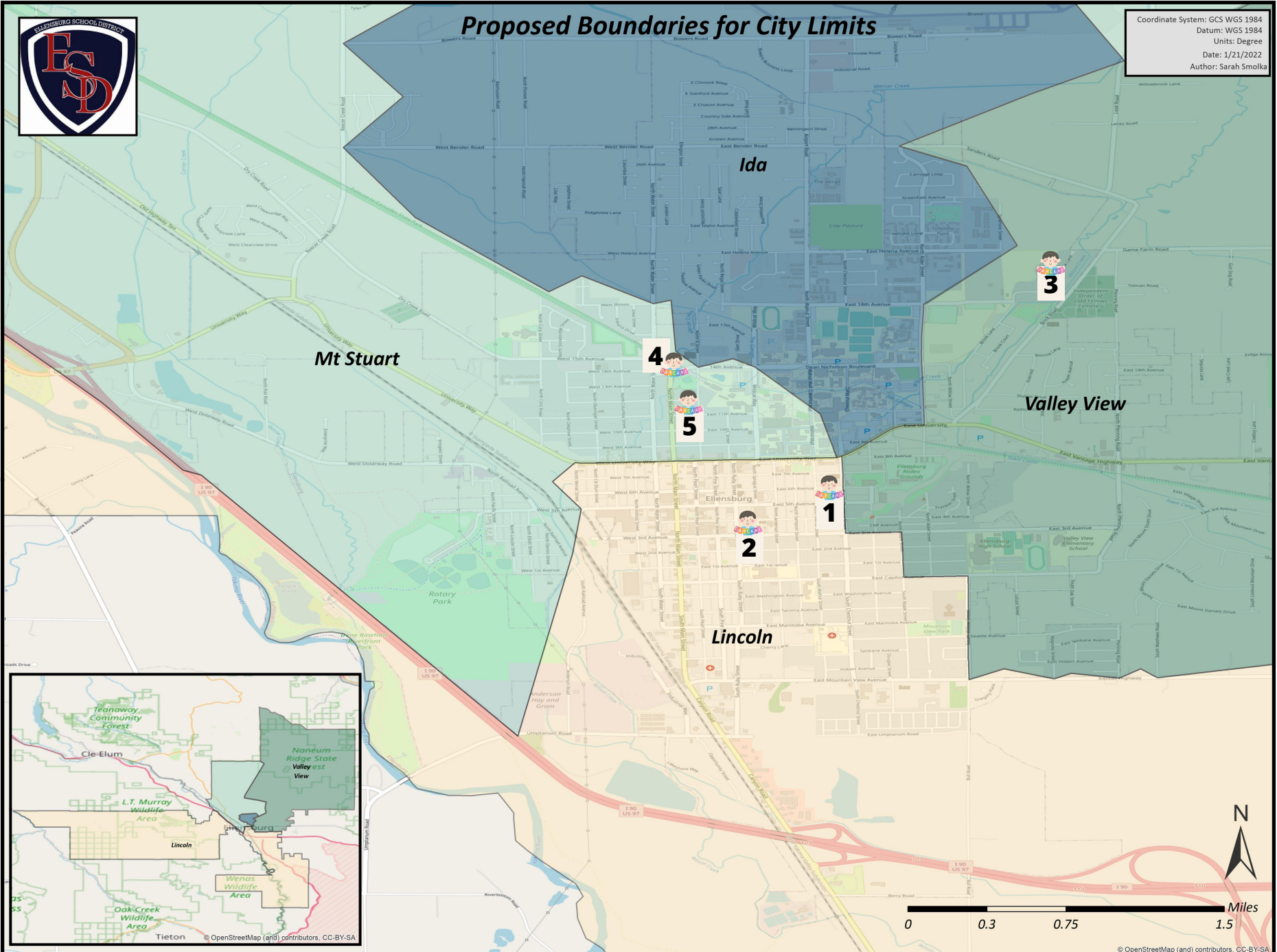




Proposed Boundaries for City Limits

Coordinate System: GCS WGS 1984
Datum: WGS 1984
Units: Degree
Date: 1/21/2022
Author: Sarah Smolka



1. **Chestnut Street Daycare and Preschool** (Before and After School Care Space Available: Please contact Nikki @509-925-7680)
2. **Creative Kids** (Before and After School Care Space Available: Please contact Mechelle @ 509-962-2552)
3. **ECLC** (After School Care Space Available: Please contact Michelle @ 509-963-1862)
4. **Mercer Creek** (Please contact Judith @ 509-933-7819)
5. **Happy Feet @ Grace Episcopal** (Before and After School Care Space Available: Please Contact Missy @ 509-933-5222; Breakfast and Transportation Provided)