



Ellensburg School District Elementary Executive Committee

September 11, 2019



AGENDA

Ellensburg School District New Elementary School and Mt. Stuart School
Integrus Project No. 21849.00 and 21850.00
Ellensburg SD District Office
Wednesday, September 11, 2019
2:00 pm

Executive Committee Meeting

Meeting Overview: Co-location discussion, grade level locations, design and site development

I. Status Update

- A. Schedule of Executive Committee Meetings for Fall
- B. User Meetings 9/11 & 9/12
- C. Open House 9/26

II. K-2 & 3-5 Buildings

- A. Staff & Community Feedback
- B. Branding, Image & Wayfinding
- C. Kindergarten program
 - 1. Classroom Count
 - 2. Restrooms
- D. Gym/Cafeteria Design
- E. Library Design

III. Site Design

- A. Site update – Shared Play
 - 1. Field Size
 - 2. Shared elements
 - 3. Nature Park access
 - 4. Existing Gym
- B. Site Circulation
 - 1. Bus Drop-off
 - 2. Kitchen Access
 - 3. Service/Mechanical Access
 - 4. Parent drop-off

IV. Discussion

V. Next Steps

School Identity

Feedback

Mount Stuart Elementary
School

- One School
- Two Schools



Graphics, Branding & Image



Grade Level Classrooms

(7) K-Classrooms
 (6) Grade 1-5
 Classrooms ea.

Count stays same, 19
 + 2 flexible classrooms
 (Flex & Music)

		Primary Grades Program (500 students) 57,500SF						Intermediate Grades Program (500 students) 55,000SF					
GENERAL INSTRUCTION		No.	Unit SF	Area	Occ	T.O.	T.S.	No.	Unit SF	Area	Occ	T.O.	T.S.
A06	Kindergarten Classroom	7	850	5,950	20	140	7	-	850	-	20	-	-
A07	Kindergarten Toilet Room	4	60	240	-	-	-	-	60	-	-	-	-
A09	General Classrooms: 1-2	12	850	10,200	22	264	12	-	850	-	22	-	-
A10	General Classrooms: 3-5	-	850	-	26	-	-	19	850	16,150	26	494	19
A11	Shared Instructional Area	6	450	2,700	-	-	-	6	450	2,700	-	-	-
A12	Shared Instruction conference	6	150	900	-	-	-	6	150	900	-	-	-
A13		-	-	-	-	-	-	-	-	-	-	-	-
TOTAL		19	-	19,990	-	404	19	19	-	19,750	-	494	19
SPECIALIZED INSTRUCTION		No.	Unit SF	Area	Occ	T.O.	T.S.	No.	Unit SF	Area	Occ	T.O.	T.S.
B01	Flex Classroom	1	850	850	22	22	1	1	850	850	26	26	1
B02	Specialized Storage	2	100	200	-	-	-	2	100	200	-	-	-
B04	Music Classroom	1	850	850	22	22	1	1	850	850	26	26	1
B05	Instrument Storage	1	180	180	-	-	-	1	180	180	-	-	-
B07	Itenerant Office	1	180	180	-	-	1	1	180	180	-	-	1
B08	Resource Room	1	1,100	1,100	4	4	2	1	1,100	1,100	4	4	1
B10	OT/PT	1	220	220	-	-	-	1	220	220	-	-	-
B11	OT/PT Office	1	120	120	-	-	-	1	120	120	-	-	-
B12	Speech/Language/ ELL	1	120	120	-	-	-	1	120	120	-	-	-
B13	Special Education Office	1	120	120	-	-	-	1	120	120	-	-	1
B17	Conference Room	1	180	180	-	-	-	1	180	180	-	-	-
B20	Autism Program	2	900	1,800	5	10	2	-	-	-	-	-	-
B21	Specialized Restrooms	2	100	200	-	-	-	-	-	-	-	-	-
TOTAL		5	-	6,120	-	58	7	3	-	4,120	56	56	6
		21 classrooms		Total Students		462		21 classrooms		Total Students		550	

Primary Grades

Plan

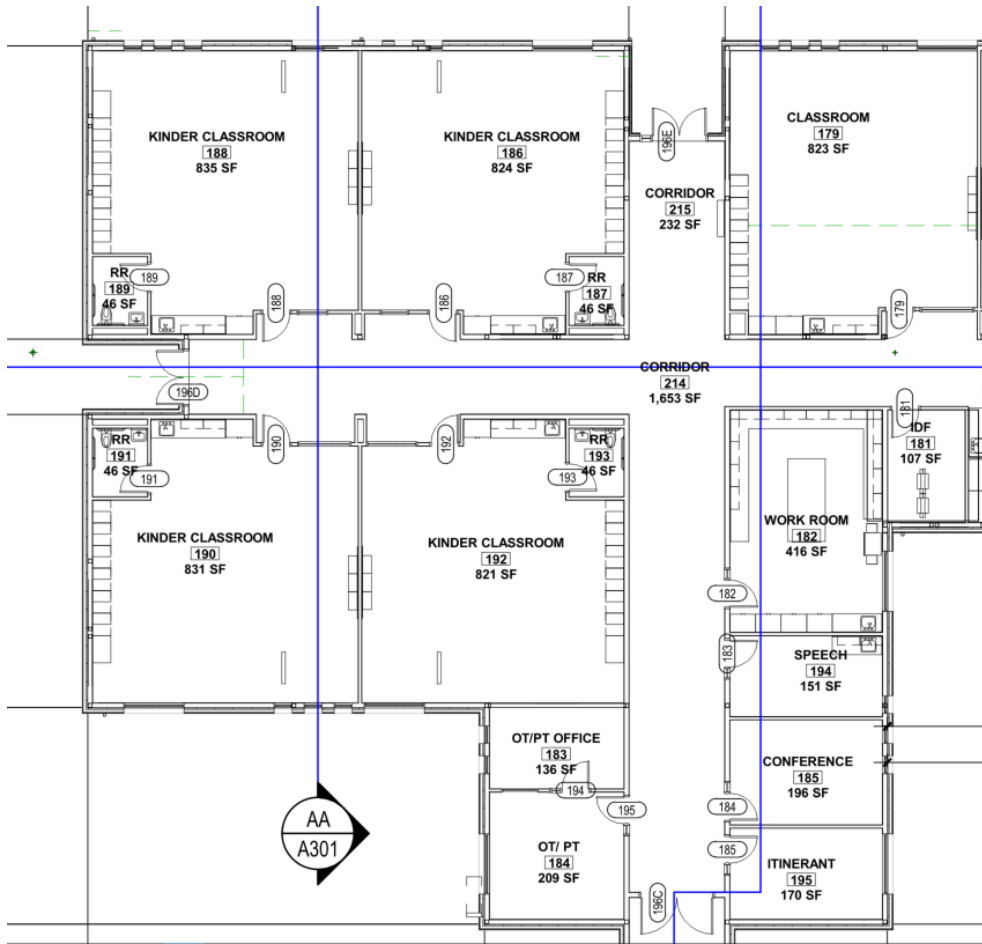
DEPARTMENT LEGEND

- General Classrooms
- Classroom Support
- Special Use Classrooms
- Performing Arts
- Administration
- Library
- Phys Ed
- Commons
- Kitchen/Support
- Circulation



KINDERGARTEN

Plan



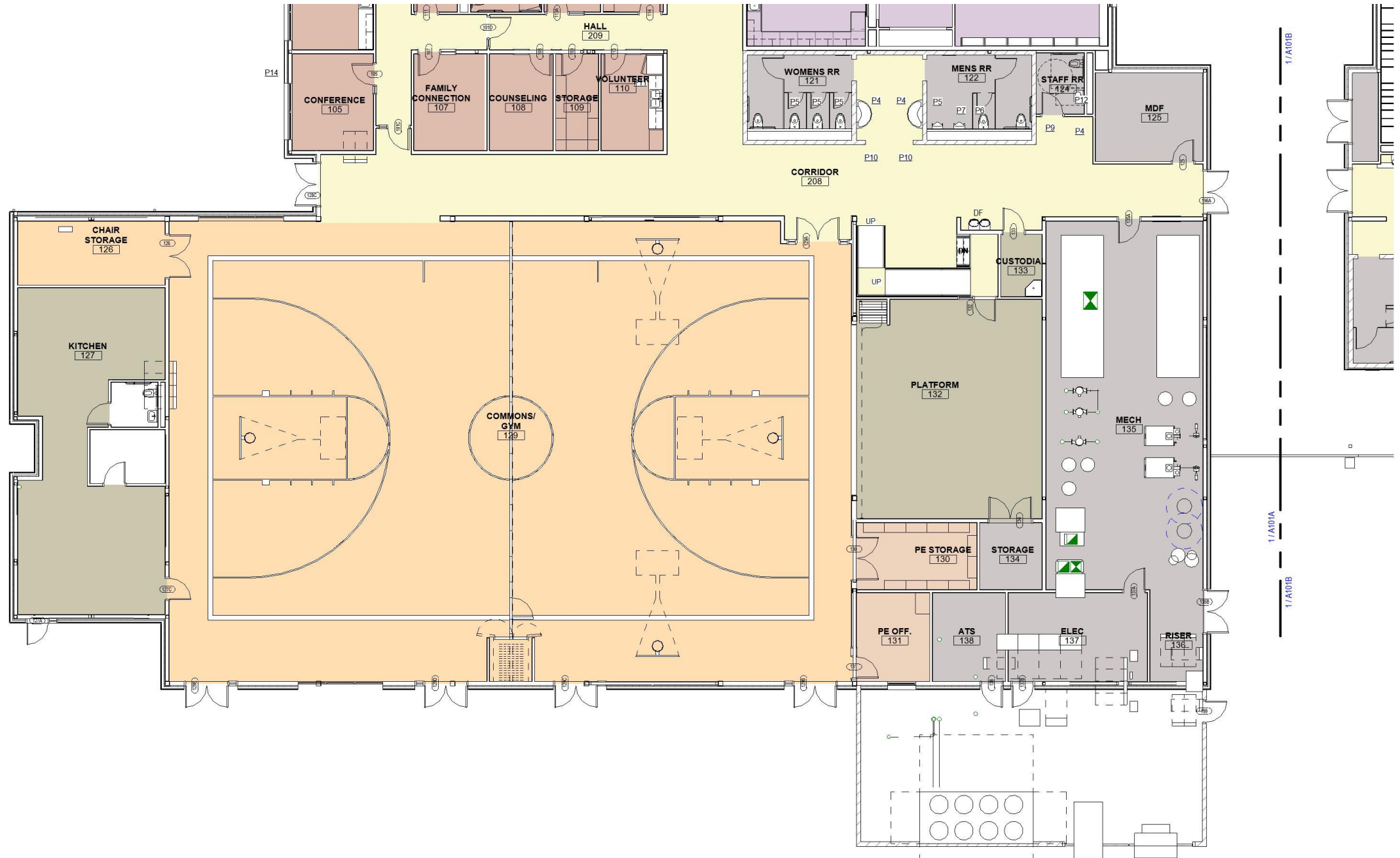
DEPARTMENT LEGEND

- General Classrooms
- Classroom Support
- Special Use Classrooms
- Performing Arts
- Administration
- Library
- Phys Ed
- Commons
- Kitchen/Support
- Circulation



Gym Update

Plan



Gym Example

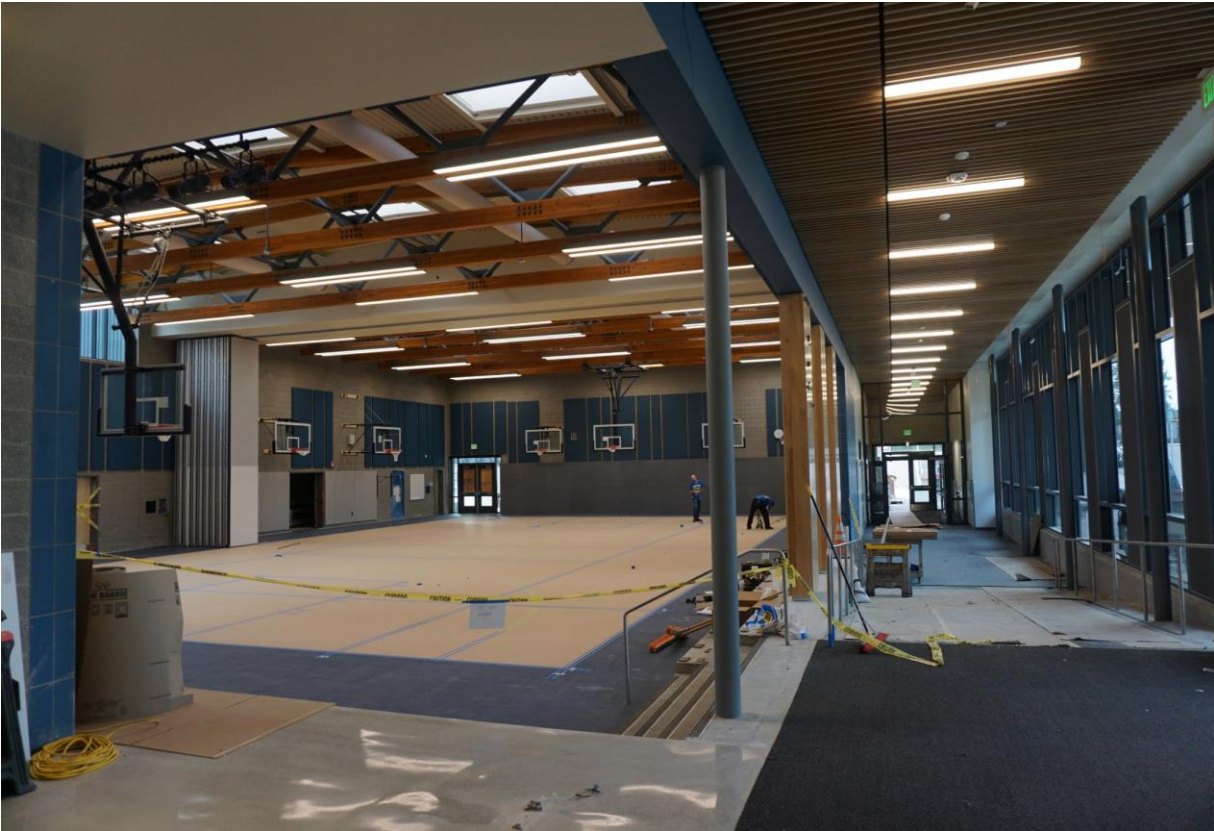


Cherry Crest ES



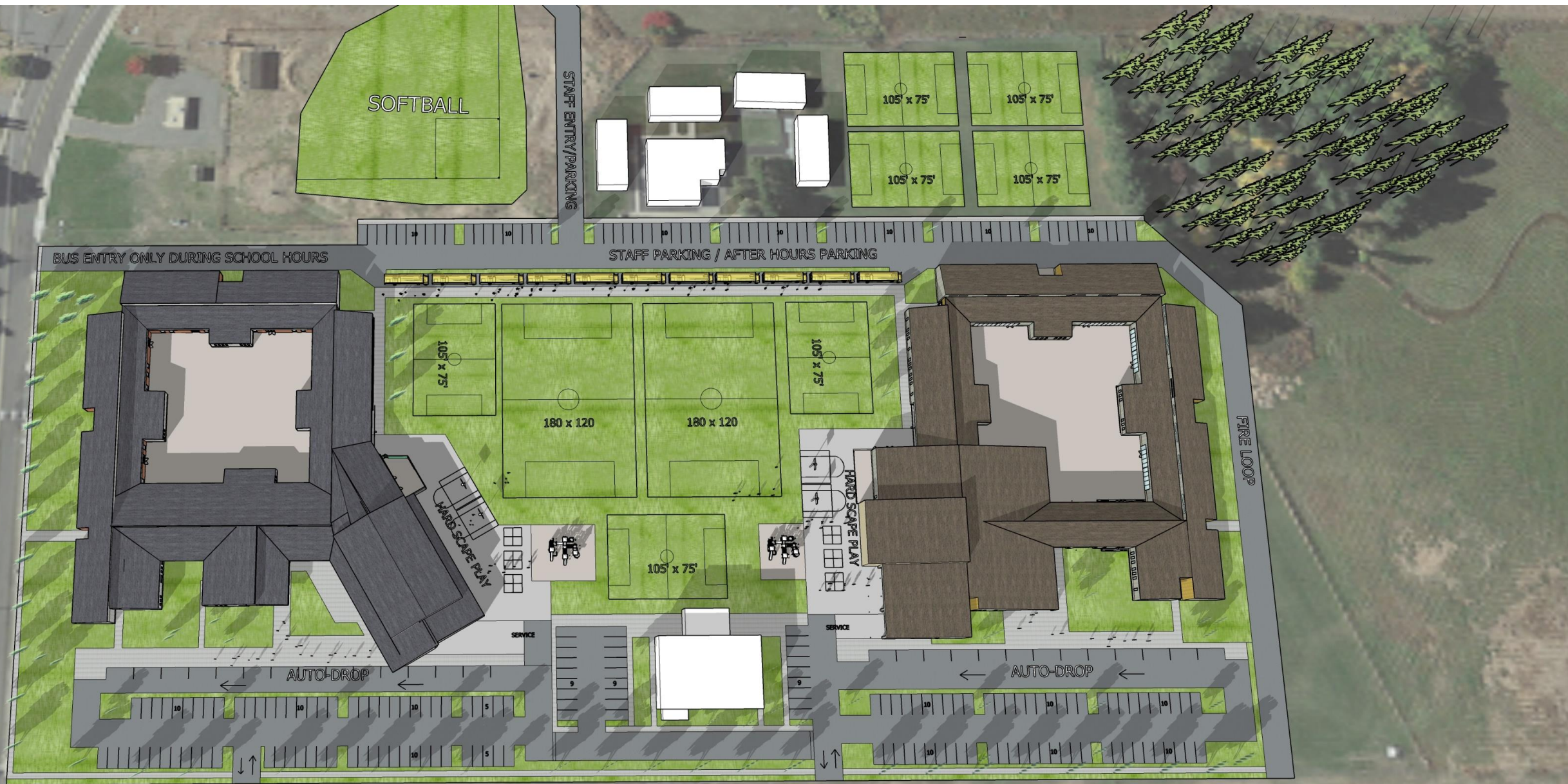
Gym Example

Clyde Hill ES





MOUNT STUART – K-2 & 3-5



N 20th St

SITE UPDATE



SITE UPDATE



SITE UPDATE

