



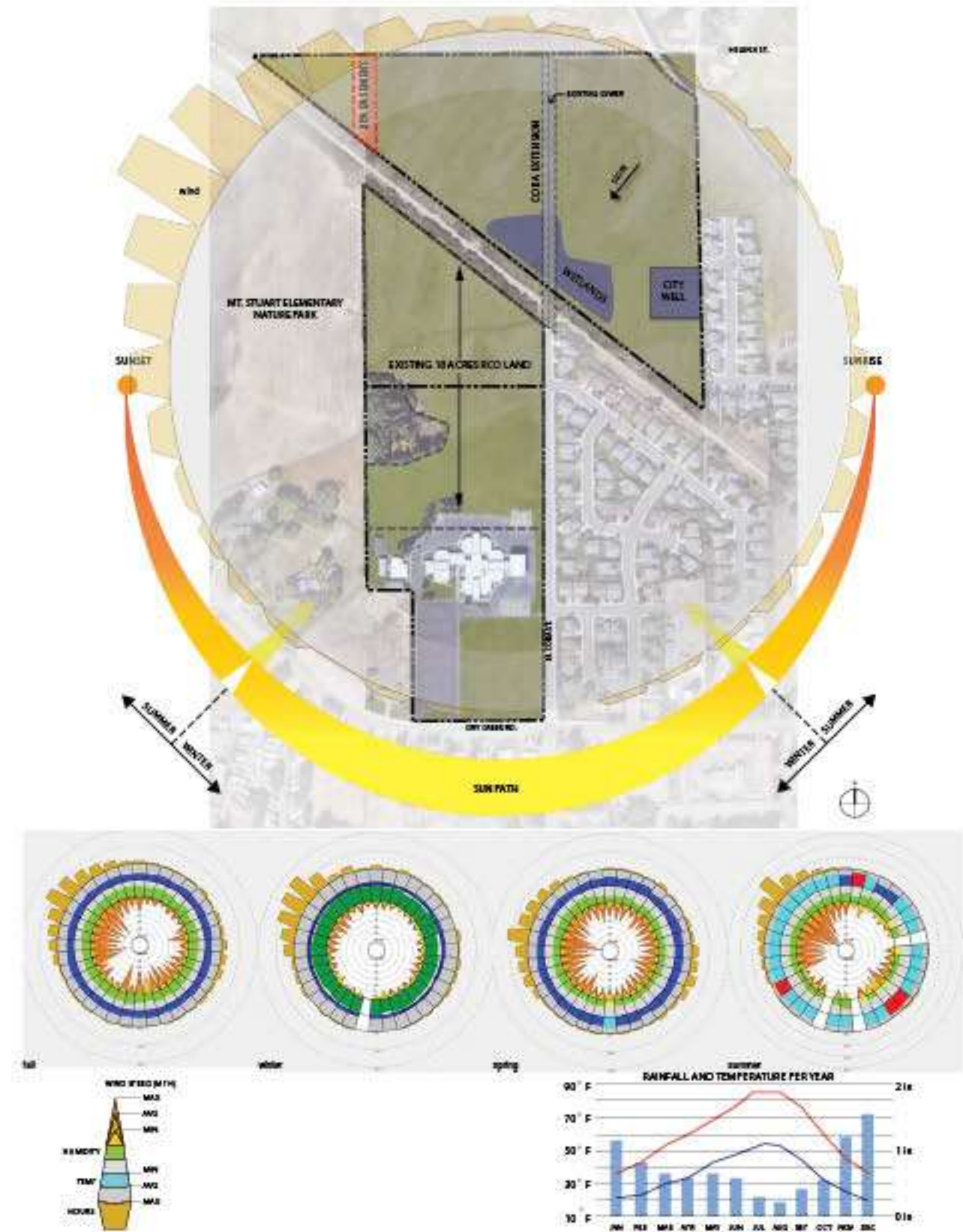
# ESD

ELLENSBURG SCHOOL DISTRICT

**MT. STUART ELEMENTARY**



SITE ANALYSIS

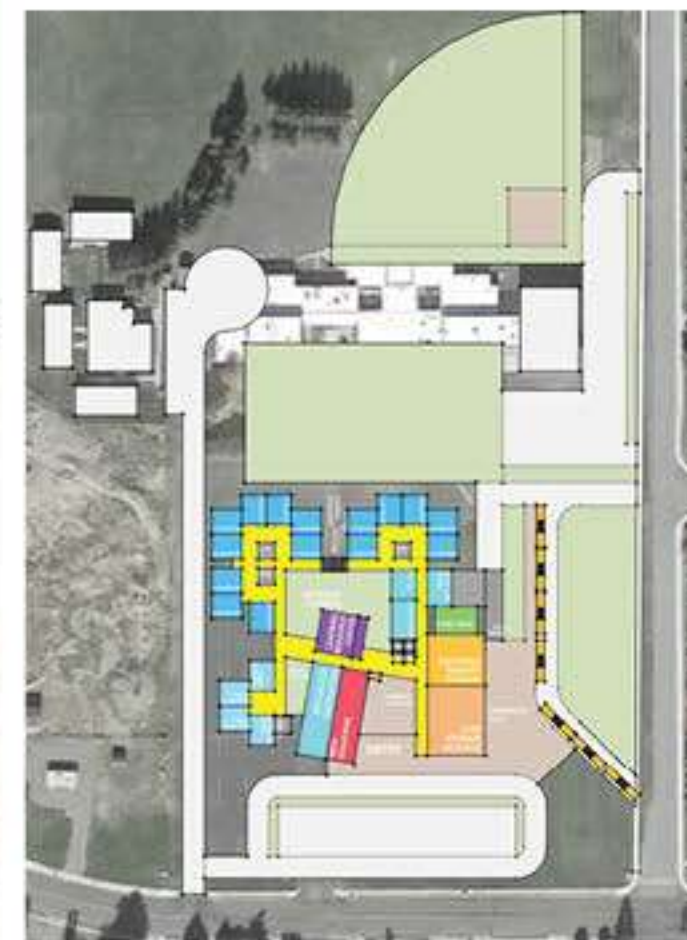


SITE CLIMATE ANALYSIS

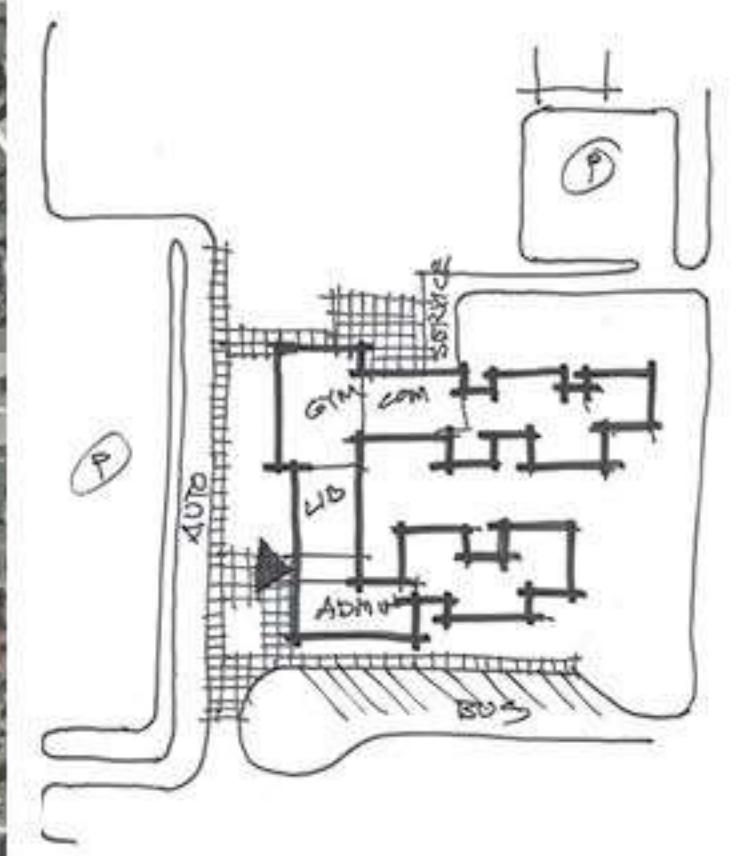


## MT. STUART – CLUSTER SITE EXPLORATION

- South Entry is large and protected with covered Courtyard
- East Bus drop off is protected by Gym
- Outdoor Learning areas separated from the Commons Courtyard and accessed across circulation
- Commons Courtyard protected by the Gym and adjacent to Hardscape Play
- Protected Hardscape Play is East of the Gym
- Isolated Kindergarten Play space
- Shared spaces for Classrooms are off of the corridor



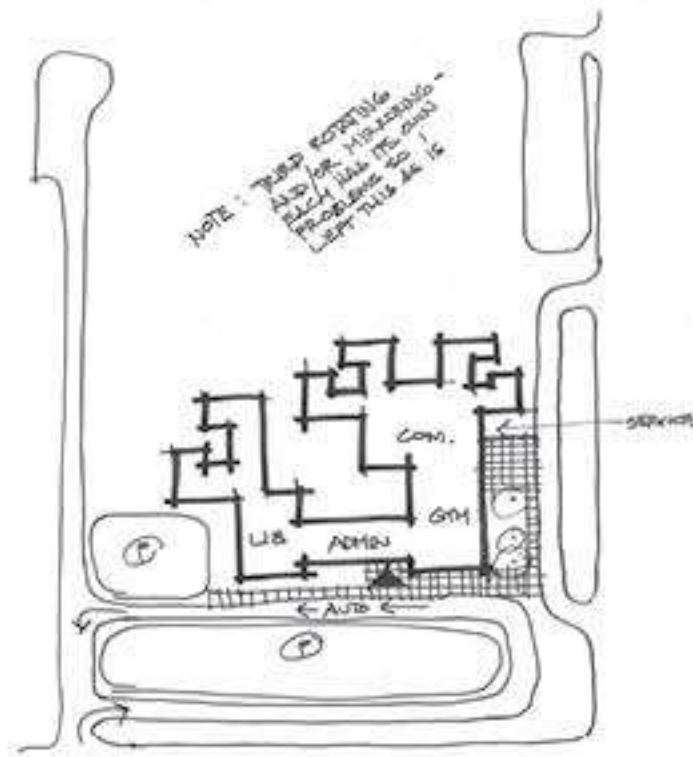
FLOOR PLAN



EXPLORATION SKETCHES

# MT. STUART – CLUSTER SITE EXPLORATION

- South Entry is large and protected
- Bus drop off is shared with student drop off
- Most Outdoor Learning space is exterior to the main Courtyard and North of the school, protected by trees
- Commons Courtyard is centrally located and protected
- Hardscape Play is West and has some protection from the wind with trees
- Kindergarten play space is part of the main Courtyard for better protection
- Shared spaces for Classrooms are off of the corridor and adaptable



EXPLORATION SKETCHES



FLOOR PLAN

DRY CREEK RD.

W. 15<sup>TH</sup> AVE.



N. CORA ST.



DRY CREEK RD.

W. 15<sup>TH</sup> AVE.

FIRST CHOICE

EXISTING

SECOND CHOICE

FUTURE EXPANSION

PLAYFIELD

NOT IN SCOPE

EXISTING GYM

NOT IN SCOPE

NOT IN SCOPE

N. CORA ST.



W. 15TH AVE.

FUTURE EXPANSION



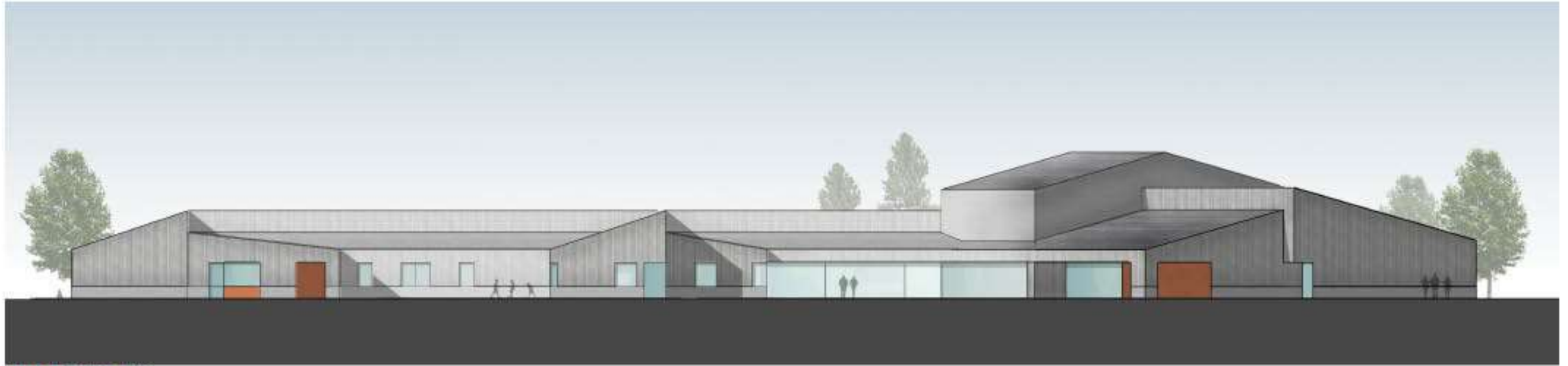


NORTH ELEVATION STUDY



SOUTH ELEVATION STUDY





EAST ELEVATION STUDY



WEST ELEVATION STUDY



AERIAL VIEW



ENTRY VIEW



# ESD

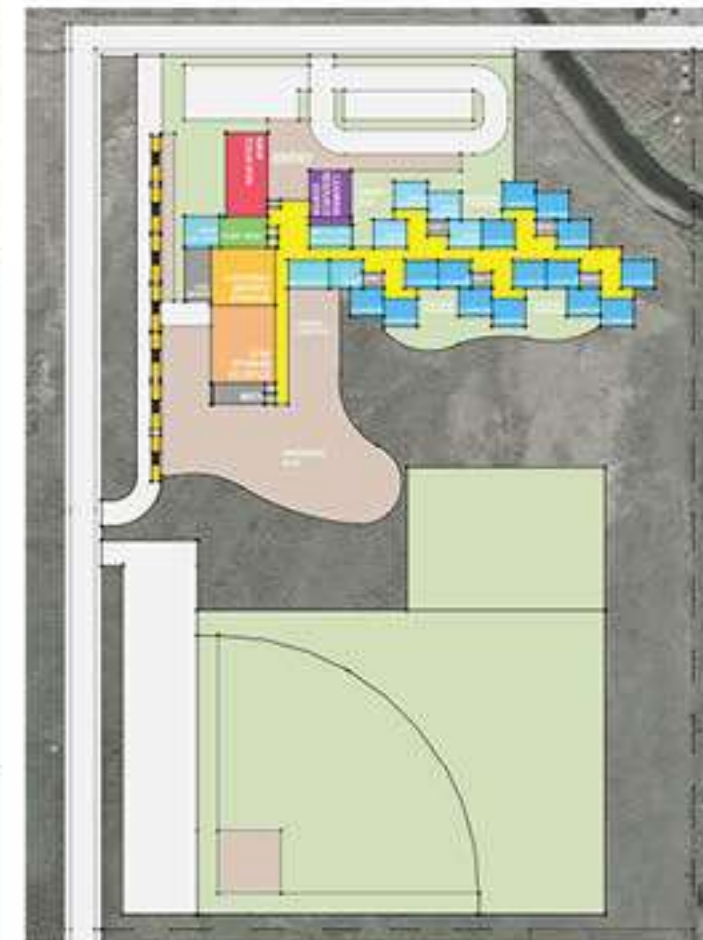
ELLENSBURG SCHOOL DISTRICT

**NEW ELEMENTARY**



## NEW ELEMENTARY – PEA POD SITE EXPLORATION

- North Entry is protected by Admin. Wing
- West Bus drop off is open to the wind
- Smaller separate protected Outdoor Learning spaces per Classroom
- Commons Courtyard protected by the Gym and adjacent to Hardscape Play
- Semi-protected Hardscape Play is adjacent to Gym
- Isolated Kindergarten Play space is just off Entry
- Shared spaces for Classrooms are off of the corridor



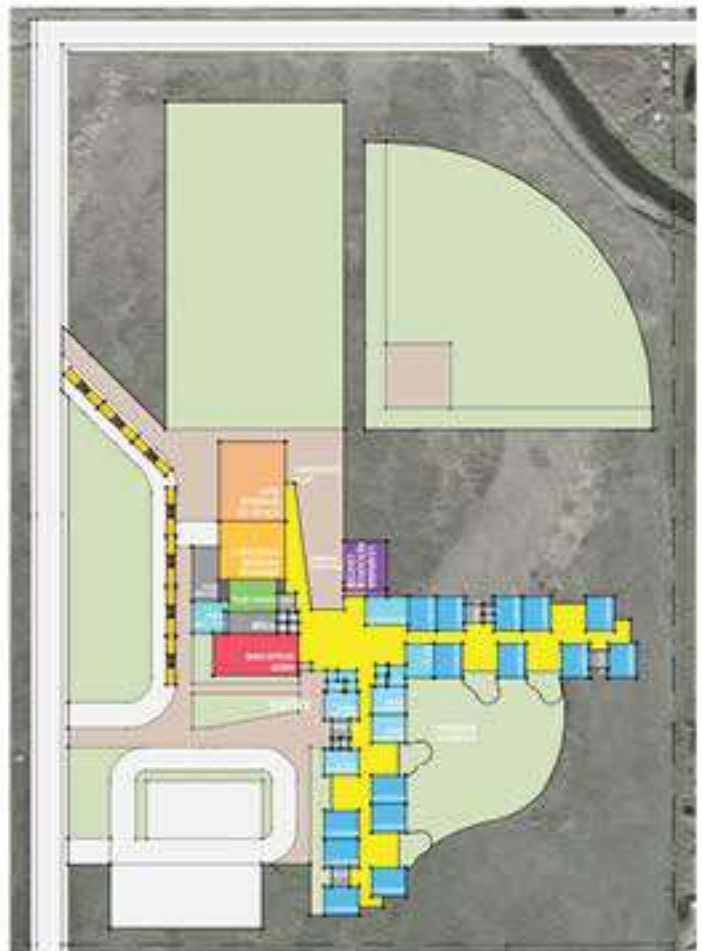
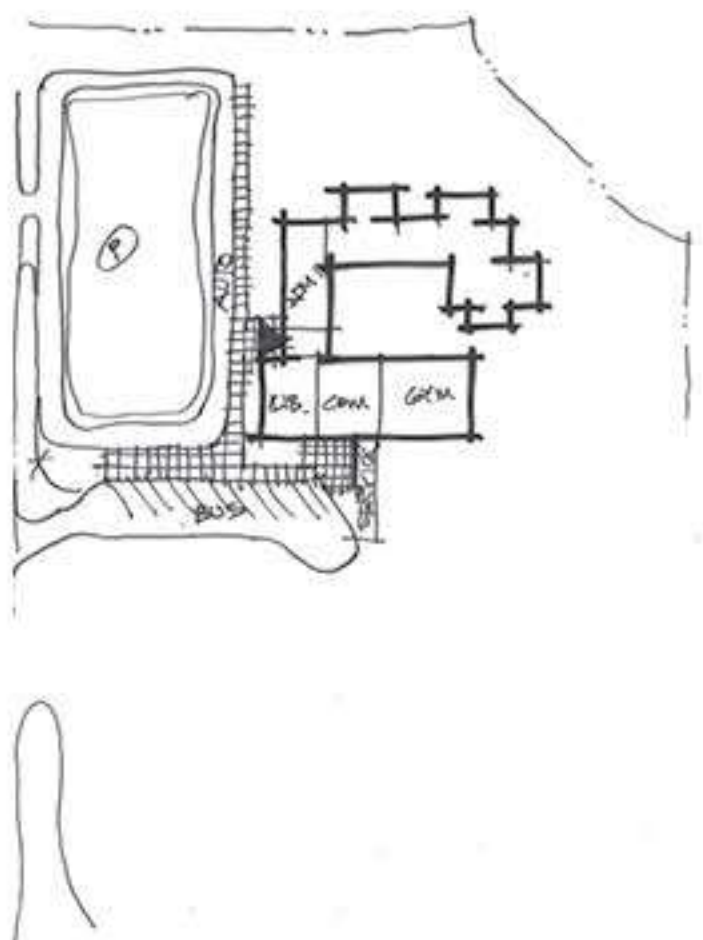
FLOOR PLAN



EXPLORATION SKETCHES

NEW ELEMENTARY – PEA POD  
SITE EXPLORATION

- South Entry is protected by Admin. Wing
- West Bus drop off is open to wind
- Southeast protected Outdoor Learning spaces are separated from Commons Courtyard
- Commons Courtyard on the North side is open to Playfields
- Hardscape Play is adjacent to the Gym and Commons Courtyard
- Kindergarten play space is not separated from other Play Space
- Shared spaces for Classrooms are open to the exterior



EXPLORATION SKETCHES

FLOOR PLAN



N. CORA ST.

PARKING

PARKING

NOT IN SCOPE

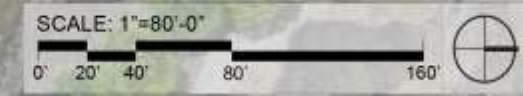
NEW ELEMENTARY SCHOOL

HARDSCAPE PLAY

COURTYARD

PLAYFIELD

HELENA ST.

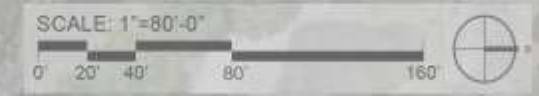


N. CORA ST.

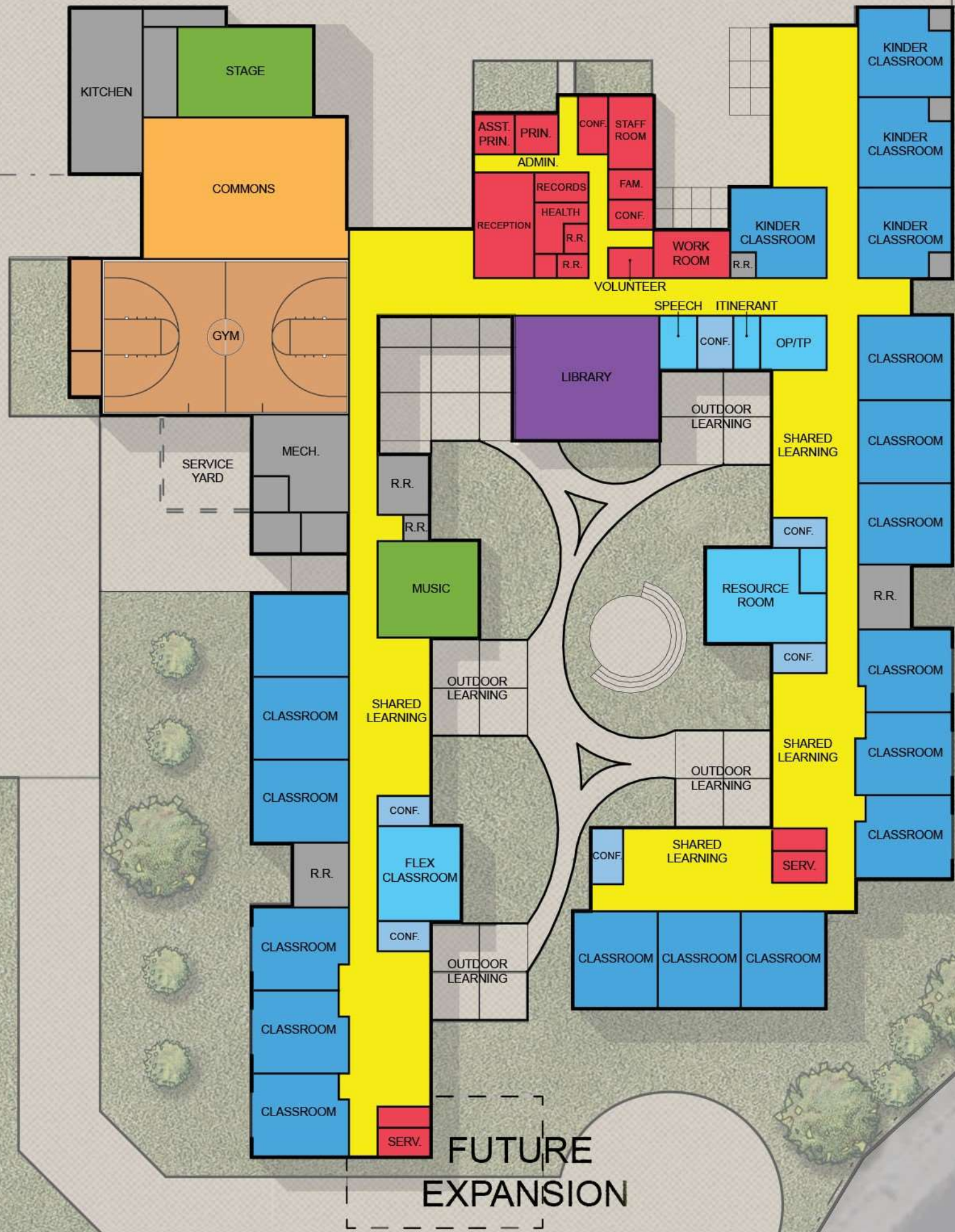
PARKING

PARKING

HELENA ST.







HELENA ST.



NORTH ELEVATION STUDY



SOUTH ELEVATION STUDY



EAST ELEVATION STUDY



WEST ELEVATION STUDY



AERIAL VIEW



ENTRY VIEW



## ELLENSBURG SCHOOL DISTRICT

1300 East Third Avenue  
Ellensburg, WA 99026  
509.925.8000 | Phone  
[www.esd401.org](http://www.esd401.org)



4114 E. Broadway  
Spokane, WA 99202  
509.535.4688 | Phone  
[www.garco.com](http://www.garco.com)



## HARTCROWSER

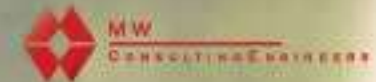
605 W. Riverside Avenue Suite 205  
Spokane, WA 99201  
509.920.7447 | Phone  
[www.hartcrowser.com](http://www.hartcrowser.com)



905 W. Riverside Suite 510  
Spokane, WA 99201  
509.464.2206 | Phone  
[www.oagwvcs.com](http://www.oagwvcs.com)

## integrus ARCHITECTURE

10 South Cedar  
Spokane, WA 99201  
509.838.8001 | Phone  
[www.integrusarch.com](http://www.integrusarch.com)



222 North Wall Street, Suite 200  
Spokane, WA 99201  
509.836.9020 | Phone  
[www.mwengineers.com](http://www.mwengineers.com)



827 W 1st Ave Ste 301  
Spokane, WA 99201  
509.252.5019 | Phone  
[www.ahbl.com](http://www.ahbl.com)