

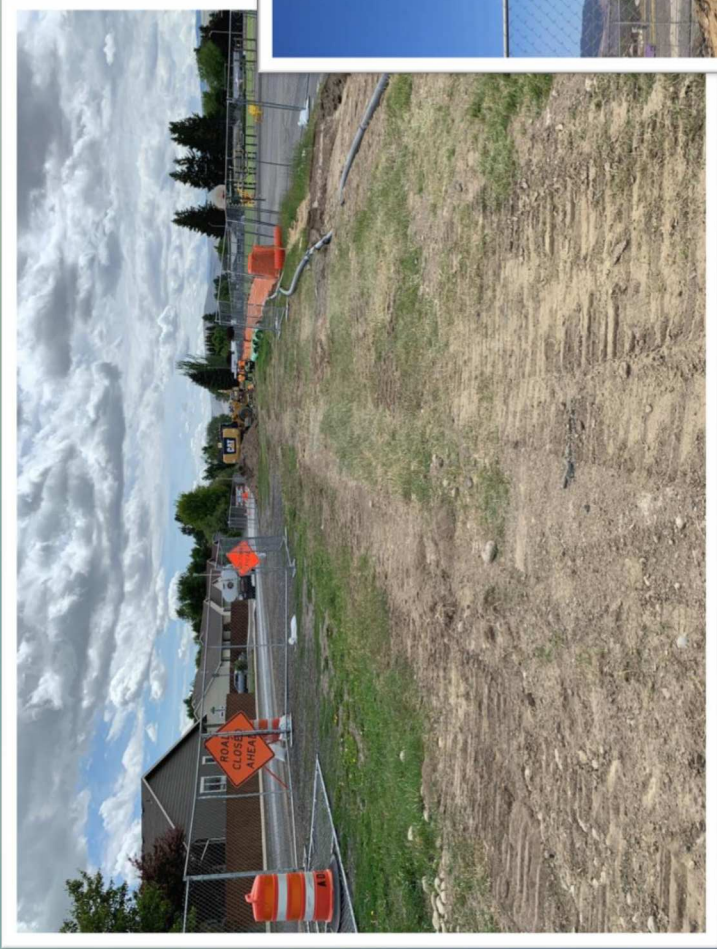
**Ellensburg School District
Capital Improvement Program
OAC Update**

**Regular Board Meeting
August 19, 2020**

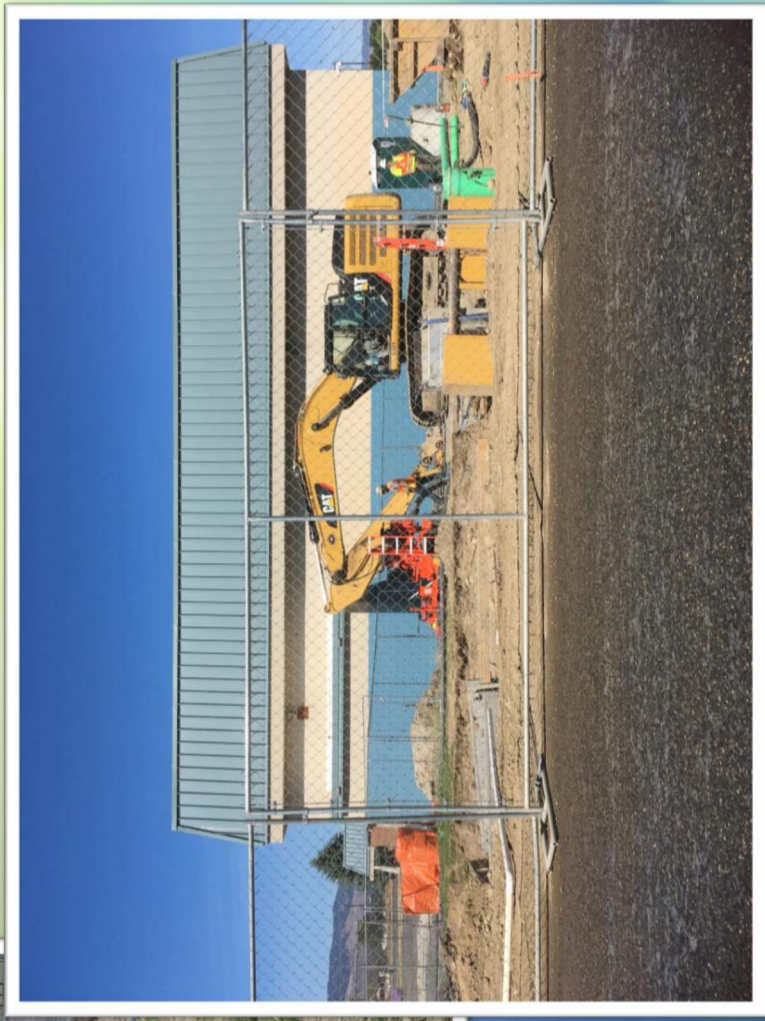




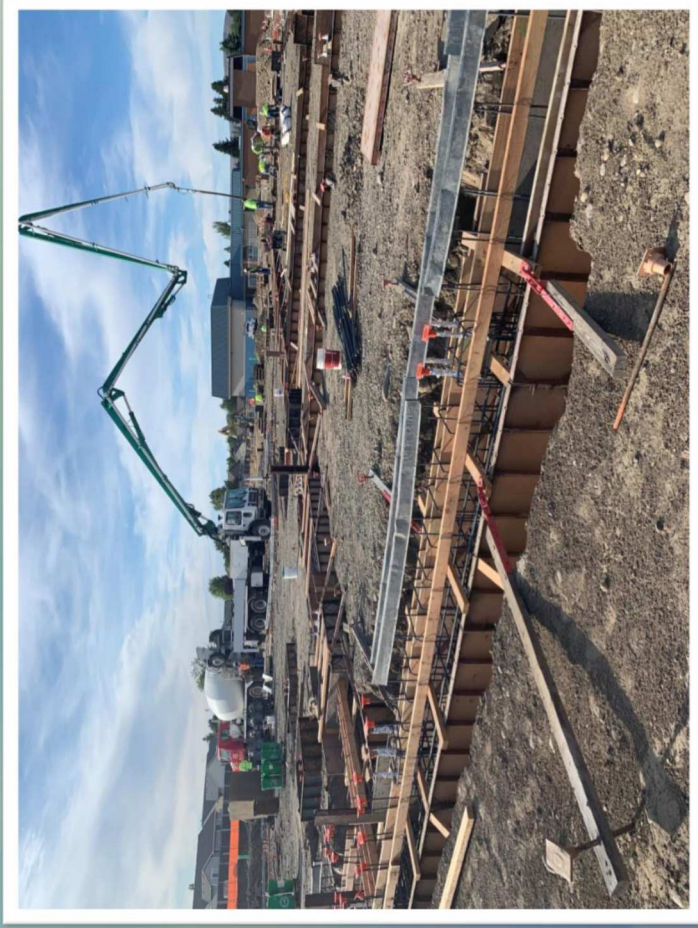
Mt. Stuart Elementary School



- Utility upgrades have occurred along Cora Street between 15th Street and the John Wayne Trail.



Mt. Stuart Elementary School



- The site for the New Mt. Stuart has been excavated and prepared for the new building pad.
- 100% of the concrete footings have been poured.
- The concrete stem walls are currently being poured.



Mt. Stuart Elementary School



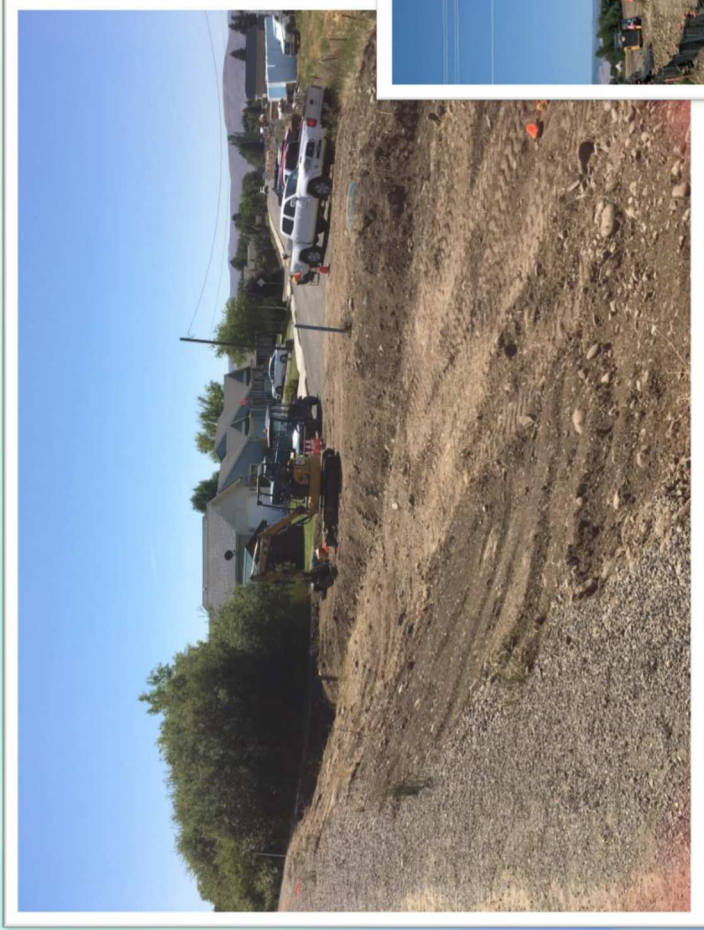
- Steel erection will begin the third week of August.
- Underground utilities are being placed.
- Construction fence will be in place around the existing Mt. Stuart building to allow for emergency exiting from the north side of the building.



Mt. Stuart Elementary School



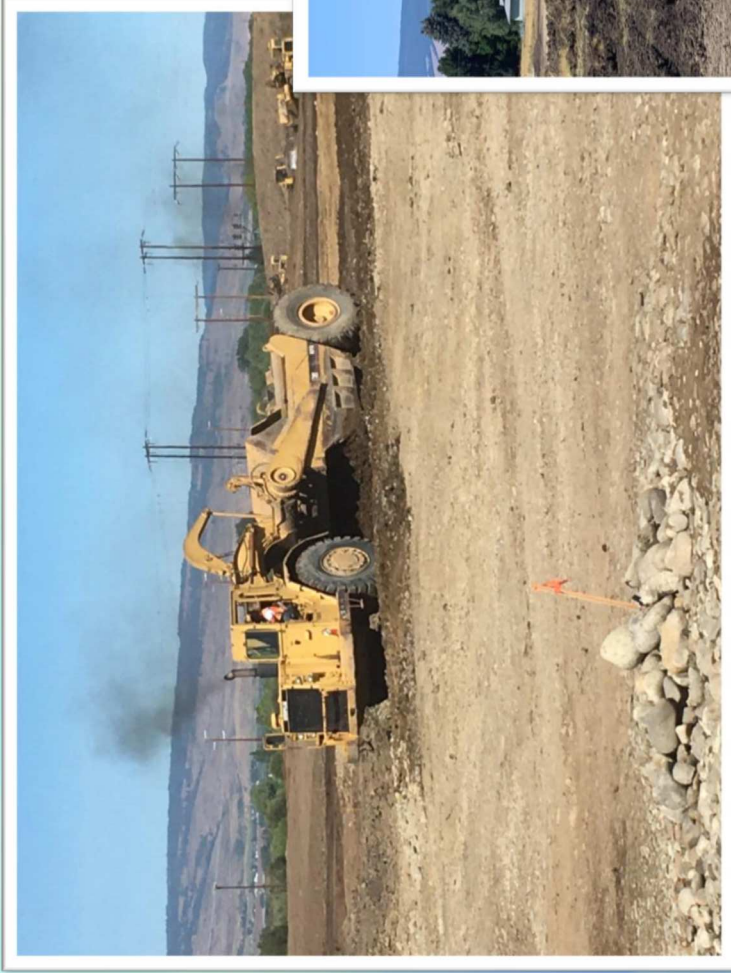
New Elementary School



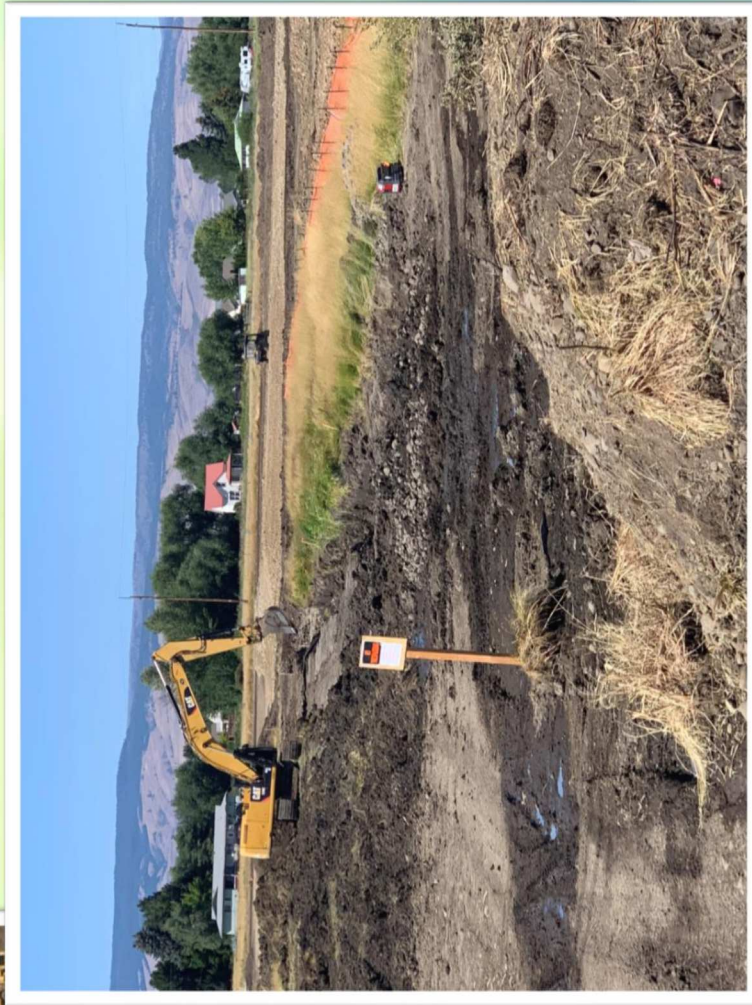
- Cora Street has been extended across the John Wayne Trail in order to connect to the New Elementary School.
- The trail will not be closed during construction; when work is occurring, flaggers are standing-by for the safety of the community.



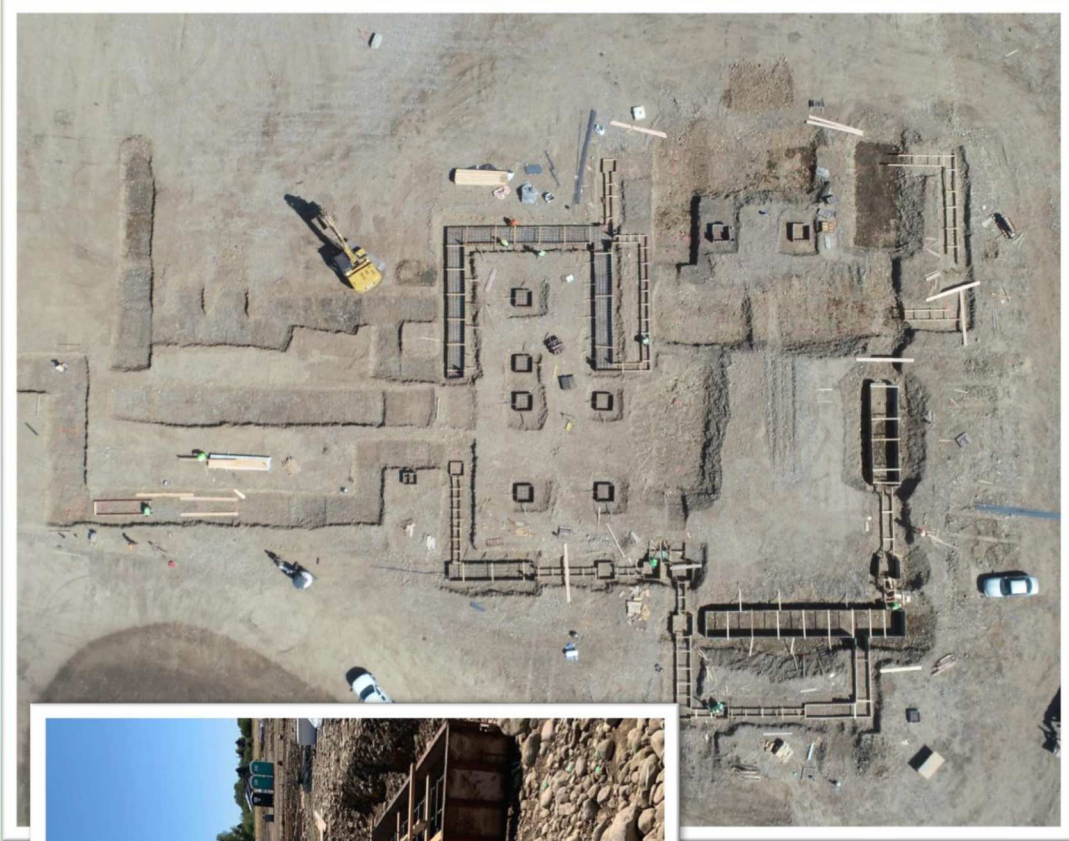
New Elementary School



- Extensive re-grading has occurred on the site for the New Elementary School.
- The existing soils have been excavated and recompact for the building pad.



New Elementary School



- The forms for the footings have been set for 75% of the building footprint.
- Concrete for the footings is scheduled to be poured the second week of August.
- Underground utilities are being placed.



New Elementary School

- **PAPERWORK -**

- D-9's for both schools have been submitted to OSPI.
- Expecting D-10 back from OSPI soon.
- GMP amendment signed by contractor after receipt of D-10
- Product submittals for both schools are ongoing.

- **NEXT STEPS ON SITE**

- Structural steel arriving on site for Mt Stuart
- Continue utilities and footings/foundation walls New ES

