

Ellensburg School District  
**Lincoln Elementary School**

Community Open House

February 17, 2021



integrus  
ARCHITECTURE





Ellensburg School District  
**Lincoln Elementary School**

Community Open House

February 17, 2021

**Agenda**

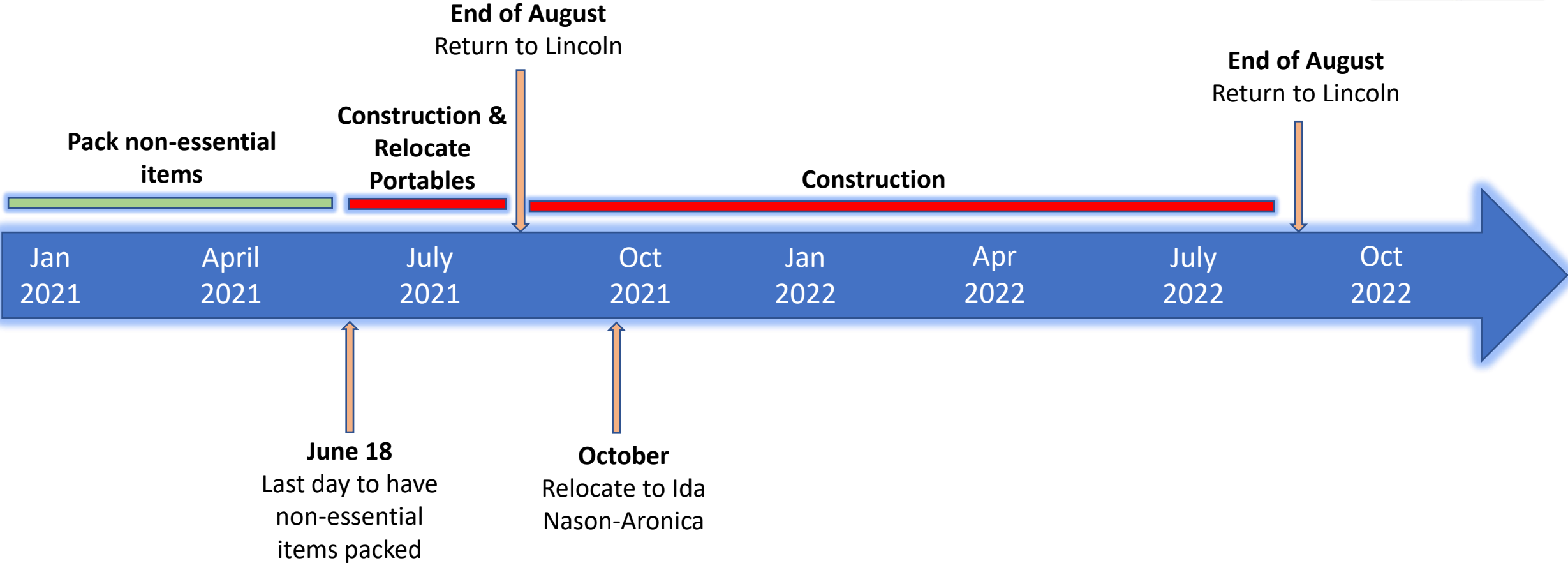
- Welcome and Introductions
- Bond Program Update
- Mt. Stuart and Ida Nason-Aronica Construction Update
- Lincoln Elementary Site & Construction Overview
- Building Design Presentation & Tour
- Q&A



integrus  
ARCHITECTURE



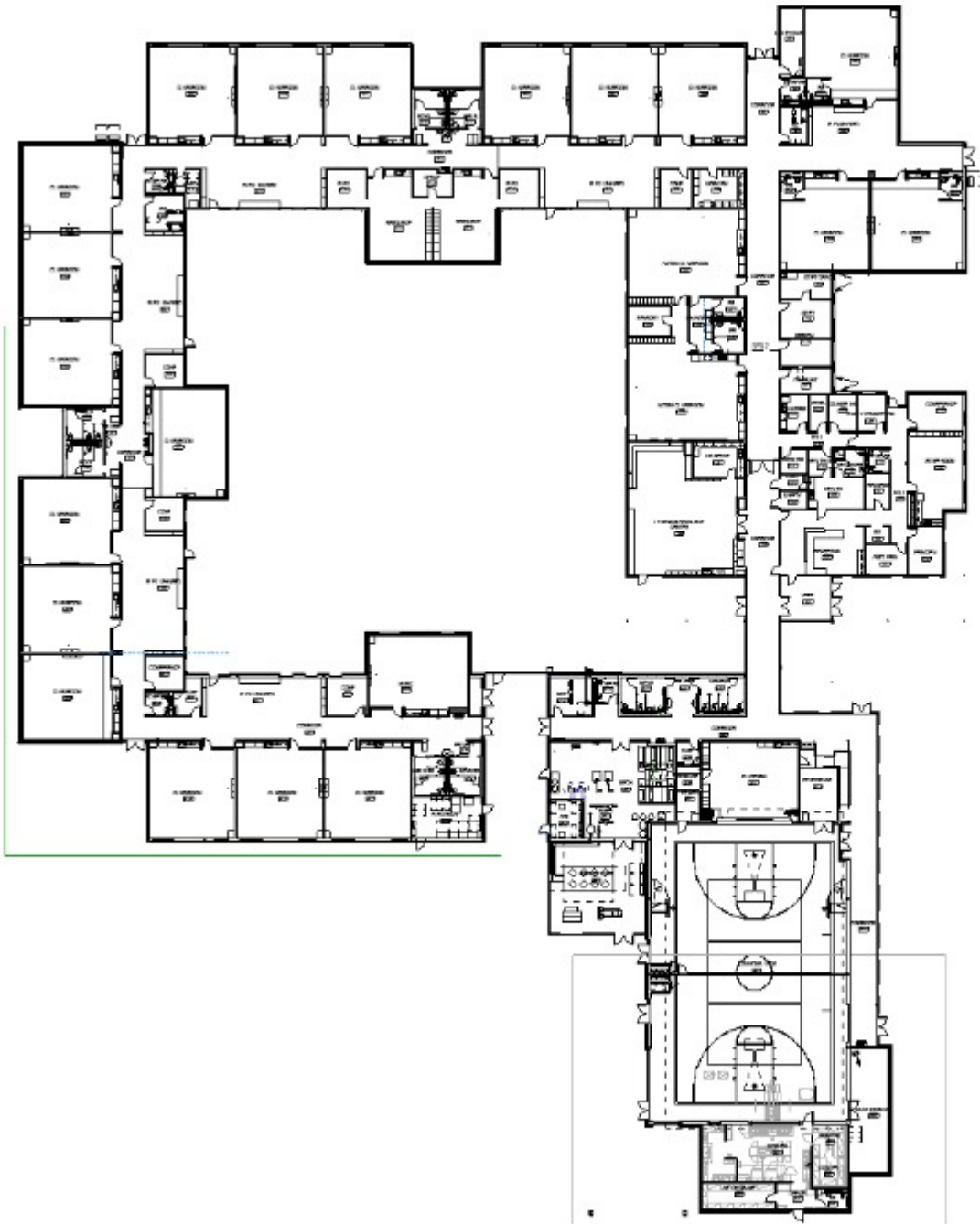
# Lincoln Elementary Construction Timeline



Ellensburg School District  
**Mt. Stuart Elementary**

Construction Progress

February 17, 2021







Gymnasium East East Elevation

Interior Courtyard



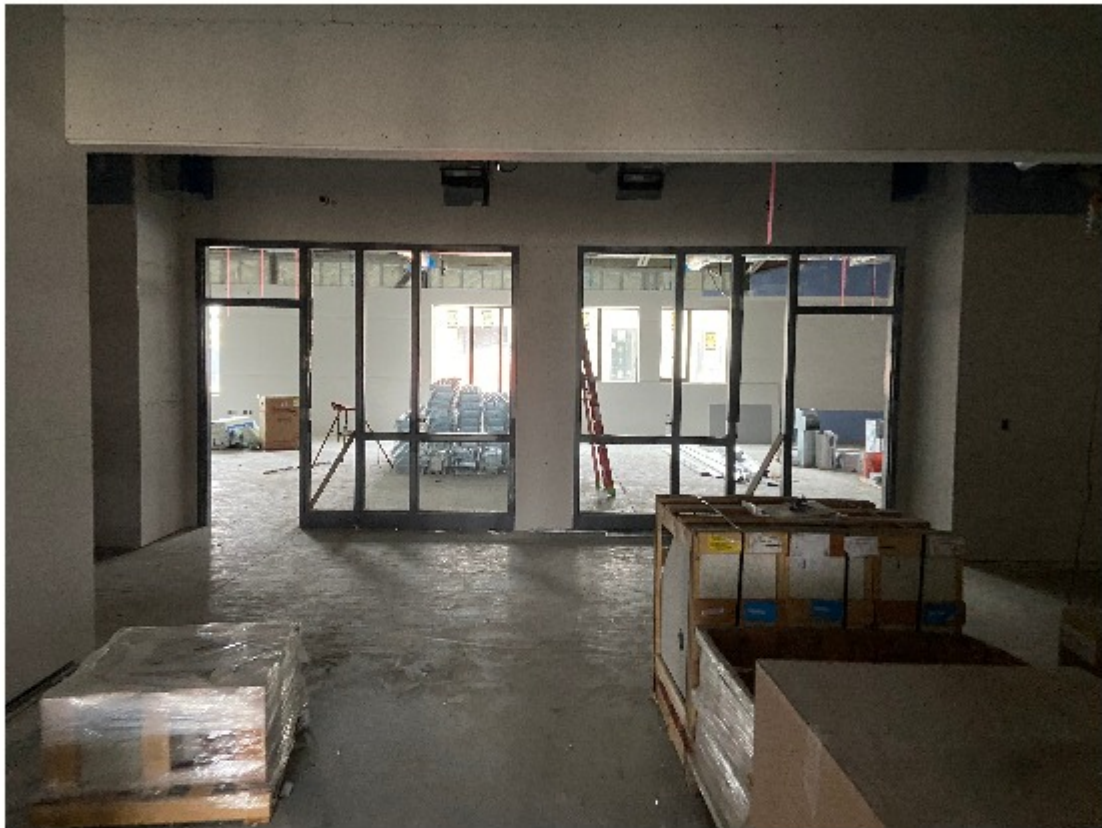


Drywall Application in Hallways

Flex Space Outside Classrooms







Classroom Alcove

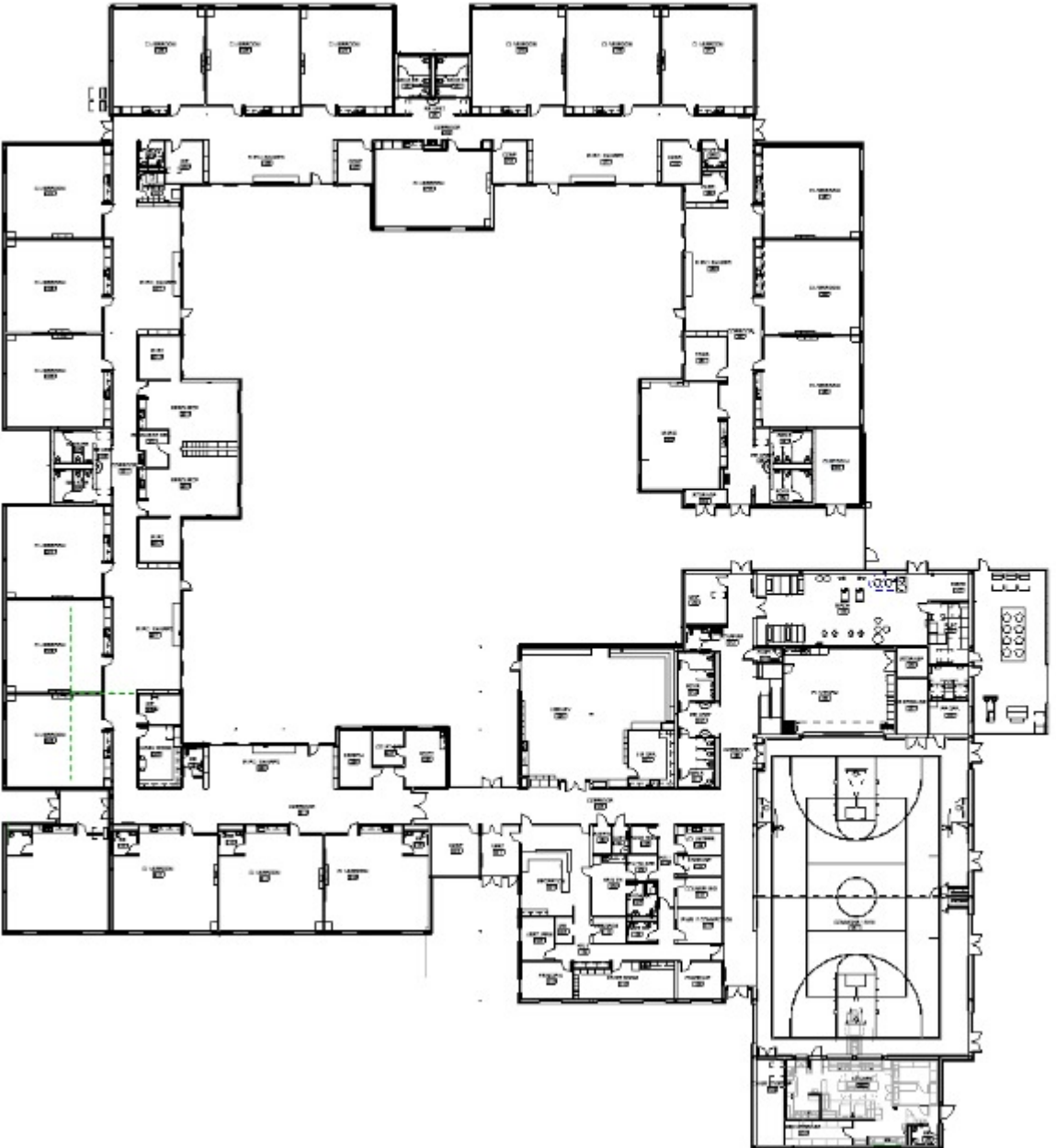
Kindergarten Classroom



Ellensburg School District  
**Ida Nason-Aronica  
Elementary**

Construction Progress

February 17, 2021







Courtyard breezeway

Interior Framing





Gymnasium





# Lincoln Elementary School

Design Update



# Site Plan



- 1. MAIN ENTRY
- 2. SOUTH ELEVATOR ENTRY
- 3. AUTO DROP-OFF
- 4. BUS DROP-OFF
- 5. VISITOR/STAFF PARKING
- 6. ON-STREET PARKING
- 7. SERVICE YARD
- 8. COURTYARD
- 9. PLAY AREA
- 10. PLAY EQUIPMENT
- 11. PLAY FIELD
- 12. CHILLER
- 13. TRANSFORMER/GENERATOR





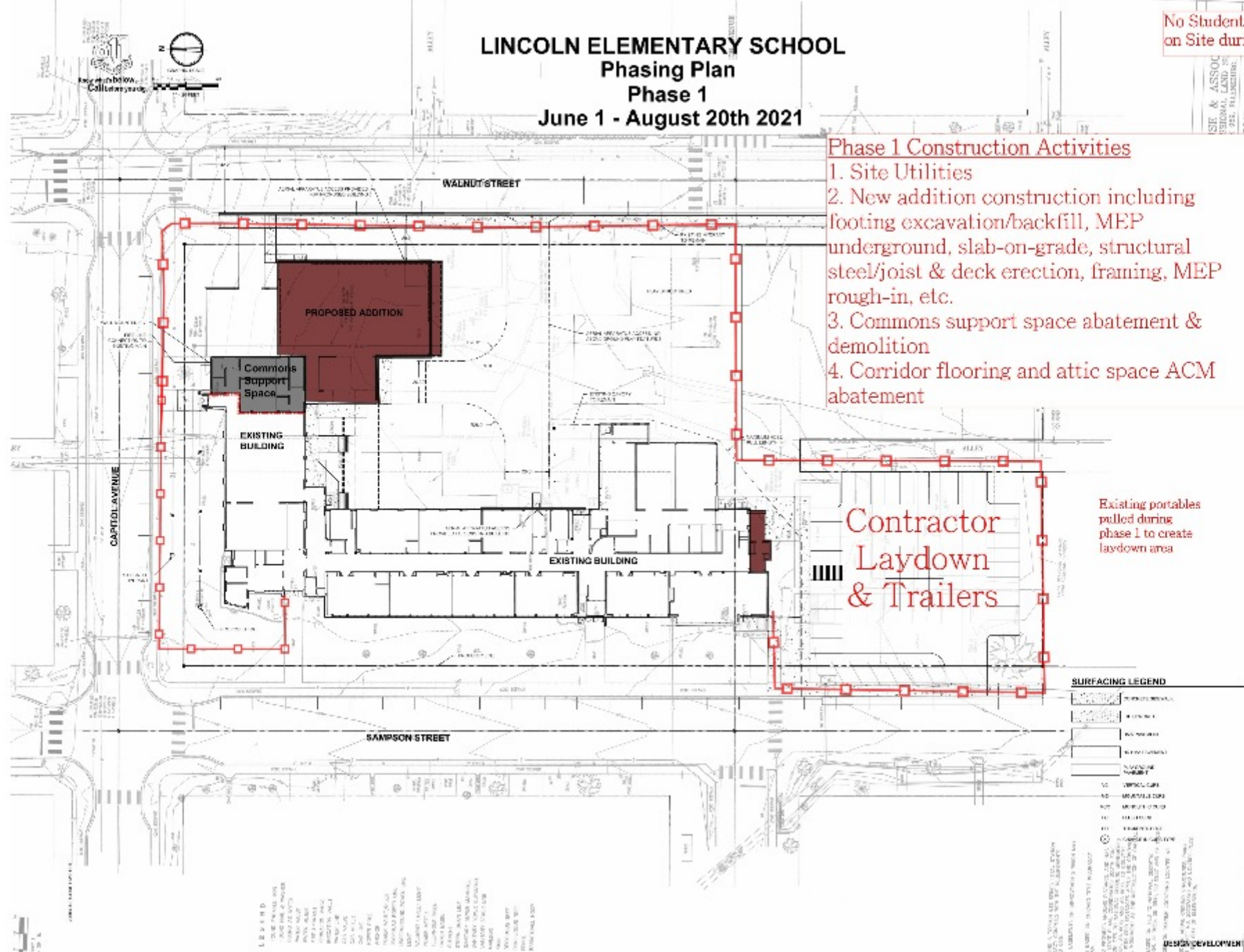
# LINCOLN ELEMENTARY SCHOOL

## Phasing Plan

### Phase 1

June 1 - August 20th 2021

No Students, staff or faculty on Site during Phase 1



- Phase 1 Construction Activities**
1. Site Utilities
  2. New addition construction including footing excavation/backfill, MEP underground, slab-on-grade, structural steel/joist & deck erection, framing, MEP rough-in, etc.
  3. Commons support space abatement & demolition
  4. Corridor flooring and attic space ACM abatement

**Contractor Laydown & Trailers**

Existing portables pulled during phase 1 to create laydown area

**SURFACING LEGEND**

[Symbol]	ASPHALT
[Symbol]	CONCRETE
[Symbol]	GRAVEL
[Symbol]	GRAVEL WITH GEOTEXTILE
[Symbol]	GRAVEL WITH GEOTEXTILE AND CURB
[Symbol]	GRAVEL WITH GEOTEXTILE AND CURB AND SIDEWALK
[Symbol]	GRAVEL WITH GEOTEXTILE AND CURB AND SIDEWALK AND BIKEWAY
[Symbol]	GRAVEL WITH GEOTEXTILE AND CURB AND SIDEWALK AND BIKEWAY AND BIKEWAY
[Symbol]	GRAVEL WITH GEOTEXTILE AND CURB AND SIDEWALK AND BIKEWAY AND BIKEWAY AND BIKEWAY

**LEGEND**

[Symbol]	EXISTING BUILDING
[Symbol]	PROPOSED ADDITION
[Symbol]	COMMONS SUPPORT SPACE
[Symbol]	CONTRACTOR LAYDOWN & TRAILERS
[Symbol]	EXISTING PORTABLES
[Symbol]	EXISTING UTILITY
[Symbol]	PROPOSED UTILITY
[Symbol]	EXISTING DRIVEWAY
[Symbol]	PROPOSED DRIVEWAY
[Symbol]	EXISTING SIDEWALK
[Symbol]	PROPOSED SIDEWALK
[Symbol]	EXISTING BIKEWAY
[Symbol]	PROPOSED BIKEWAY
[Symbol]	EXISTING CURB
[Symbol]	PROPOSED CURB
[Symbol]	EXISTING SIDEWALK AND BIKEWAY
[Symbol]	PROPOSED SIDEWALK AND BIKEWAY
[Symbol]	EXISTING SIDEWALK AND BIKEWAY AND BIKEWAY
[Symbol]	PROPOSED SIDEWALK AND BIKEWAY AND BIKEWAY

integrus

ARHBL

ELLENSBURG SCHOOL DISTRICT  
LINCOLN ELEMENTARY SCHOOL

201 S. Sampson Street  
Ellensburg, WA 98923

DATE: 10/15/20  
SCALE: 1/8"=1'-0"  
SHEET: 1 OF 1  
DRAWN BY: JLD  
CHECKED BY: JLD

CML SITE PLAN

C300

DESIGN DEVELOPMENT

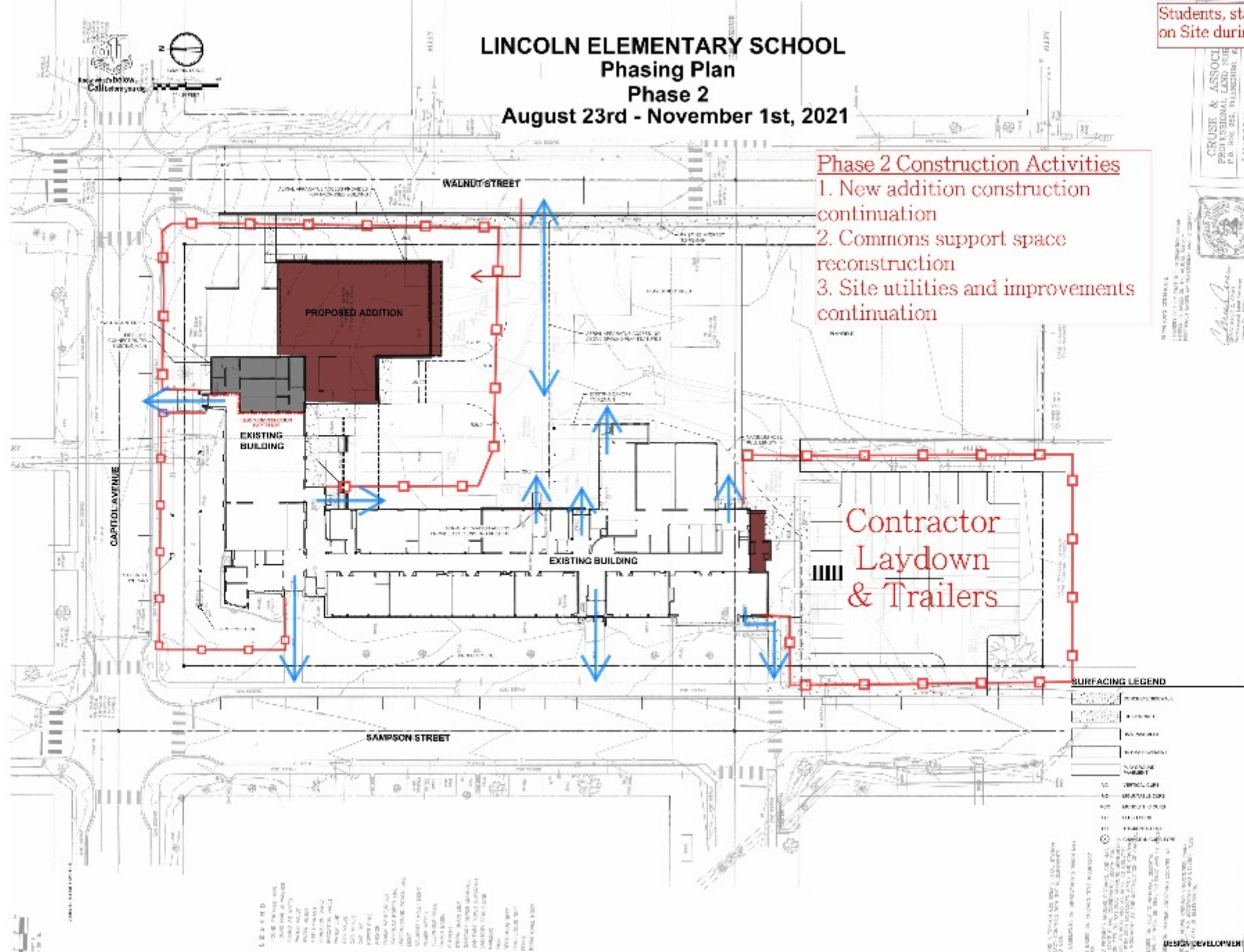
# LINCOLN ELEMENTARY SCHOOL

## Phasing Plan

### Phase 2

#### August 23rd - November 1st, 2021

Students, staff AND faculty on Site during Phase 2



**Phase 2 Construction Activities**

1. New addition construction continuation
2. Commons support space reconstruction
3. Site utilities and improvements continuation

**Contractor Laydown & Trailers**

**SURFACING LEGEND**

[Symbol]	ASPHALT CONCRETE
[Symbol]	CONCRETE
[Symbol]	GRAVEL
[Symbol]	GRAVEL/ASPHALT
[Symbol]	GRAVEL/CONCRETE
[Symbol]	GRAVEL/GRASS
[Symbol]	GRAVEL/SAND
[Symbol]	GRAVEL/SAND/ASPHALT
[Symbol]	GRAVEL/SAND/CONCRETE
[Symbol]	GRAVEL/SAND/GRASS
[Symbol]	GRAVEL/SAND/SAND
[Symbol]	GRAVEL/SAND/SAND/ASPHALT
[Symbol]	GRAVEL/SAND/SAND/CONCRETE
[Symbol]	GRAVEL/SAND/SAND/GRASS
[Symbol]	GRAVEL/SAND/SAND/SAND
[Symbol]	GRAVEL/SAND/SAND/SAND/ASPHALT
[Symbol]	GRAVEL/SAND/SAND/SAND/CONCRETE
[Symbol]	GRAVEL/SAND/SAND/SAND/GRASS
[Symbol]	GRAVEL/SAND/SAND/SAND/SAND
[Symbol]	GRAVEL/SAND/SAND/SAND/SAND/ASPHALT
[Symbol]	GRAVEL/SAND/SAND/SAND/SAND/CONCRETE
[Symbol]	GRAVEL/SAND/SAND/SAND/SAND/GRASS

CRUST & ASSOCI  
PROFESSIONAL LAND SURV  
P.O. BOX 282, WALESBURG, IA  
LINCOLN SCHOOL

integrus

ARHBL

ELLENSBURG SCHOOL DISTRICT  
LINCOLN ELEMENTARY SCHOOL  
281 & Sargent Street  
Elleensburg, IA 50525

DATE: 10/1/21  
SCALE: 1/8"=1'-0"  
SHEET: 108  
DESIGNER: [Signature]

CML SITE PLAN  
C300



# LINCOLN ELEMENTARY SCHOOL

## Phasing Plan

### Phase 3

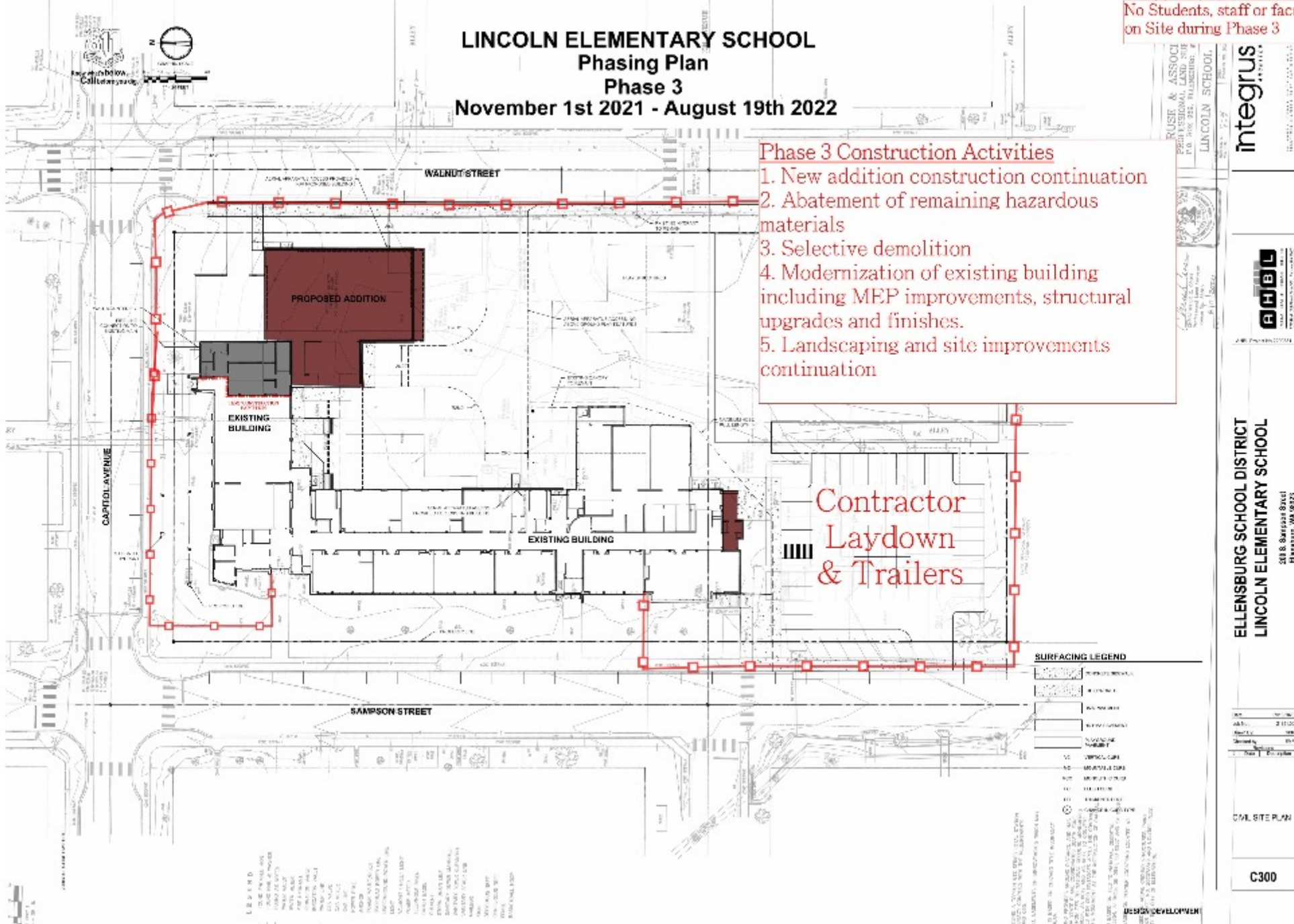
November 1st 2021 - August 19th 2022

No Students, staff or faculty  
on Site during Phase 3

#### Phase 3 Construction Activities

1. New addition construction continuation
2. Abatement of remaining hazardous materials
3. Selective demolition
4. Modernization of existing building including MEP improvements, structural upgrades and finishes.
5. Landscaping and site improvements continuation

Contractor  
Laydown  
& Trailers



ELLENSBURG SCHOOL DISTRICT  
LINCOLN ELEMENTARY SCHOOL  
201 S. Sargeant Street  
Elleensburg, WI 53225

DATE: 11/15/21  
SCALE: 1/8" = 1'-0"  
PROJECT: LINCOLN ELEMENTARY SCHOOL  
SHEET: 211.02  
DESIGNED BY: J.P. JONES  
DRAWN BY: J.P. JONES

CONTRACTOR: [Name]

C300

CRUICKSHANK & ASSOCIATES  
PLANNERS, ARCHITECTS, ENGINEERS  
1111 W. JEFFERSON STREET  
MILWAUKEE, WI 53233  
TEL: 414.764.5000  
WWW.CRUIKSHANK.COM



ELLENSBURG SCHOOL DISTRICT  
LINCOLN ELEMENTARY SCHOOL  
201 S. Sargeant Street  
Elleensburg, WI 53225

DATE: 11/15/21  
SCALE: 1/8" = 1'-0"  
PROJECT: LINCOLN ELEMENTARY SCHOOL  
SHEET: 211.02  
DESIGNED BY: J.P. JONES  
DRAWN BY: J.P. JONES

CONTRACTOR: [Name]

C300

DESIGN DEVELOPMENT

# First Floor Plan

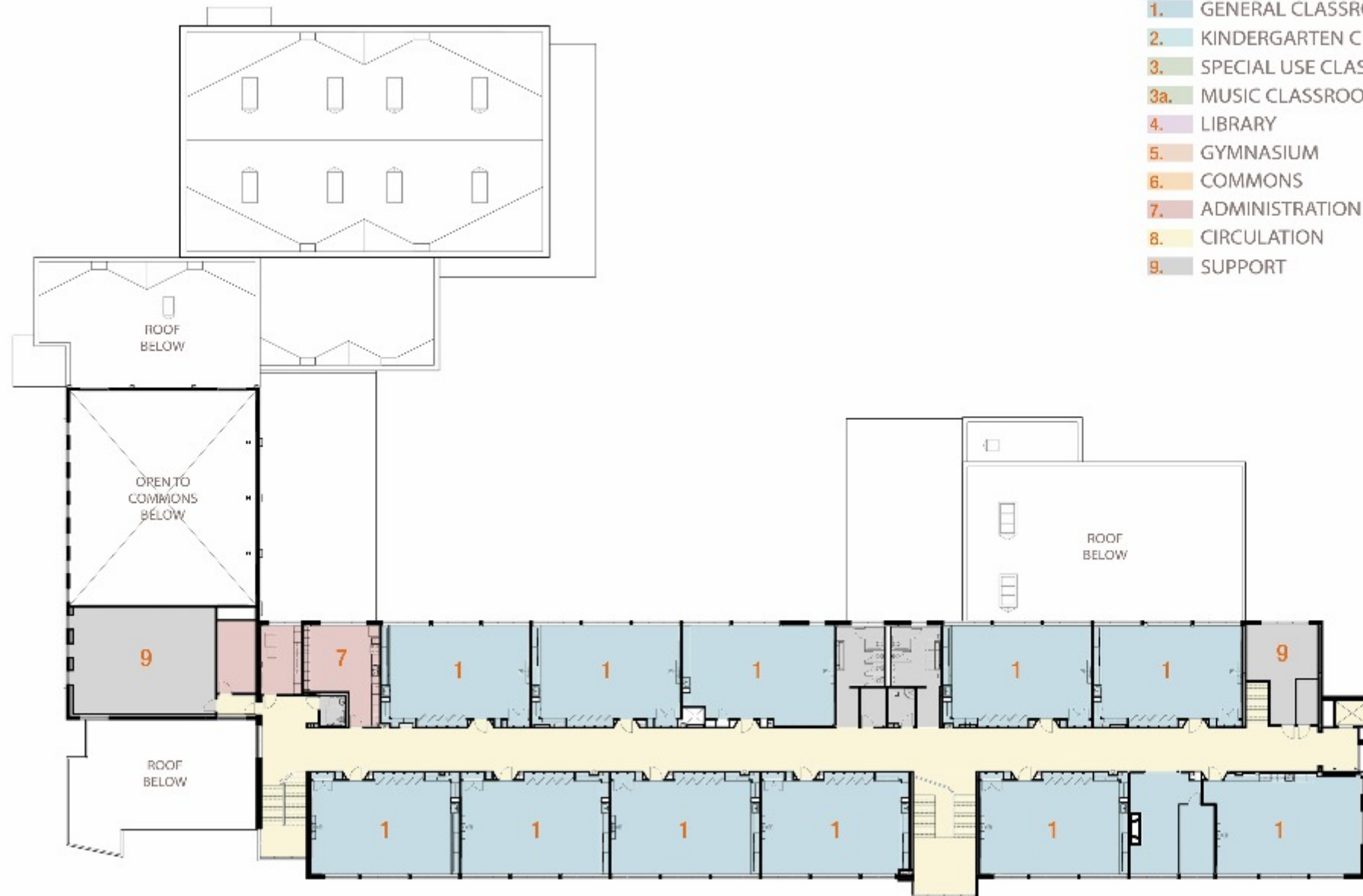


- 1. GENERAL CLASSROOMS
- 2. KINDERGARTEN CLASSROOMS
- 3. SPECIAL USE CLASSROOM
- 3a. MUSIC CLASSROOM/PLATFORM
- 4. LIBRARY
- 5. GYMNASIUM
- 6. COMMONS
- 7. ADMINISTRATION
- 8. CIRCULATION
- 9. SUPPORT
- 9a. KITCHEN
- 10. MAIN ENTRY
- 11. COURTYARD
- 12. SERVICE AREA





# Second Floor Plan











HOME	PERIOD	3:05	GUEST
43	4		37
FLS	PLYR	FOUL	FLS
6	5	29	3





Lincoln Ele



# Classroom - Finish Options (OPTION B DRAFT)

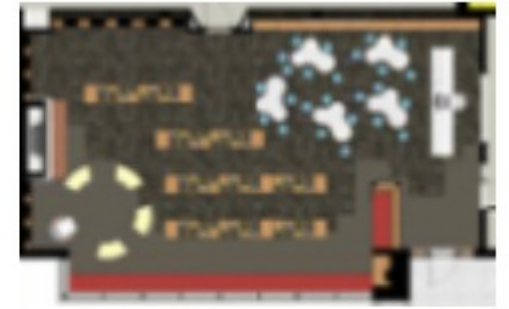
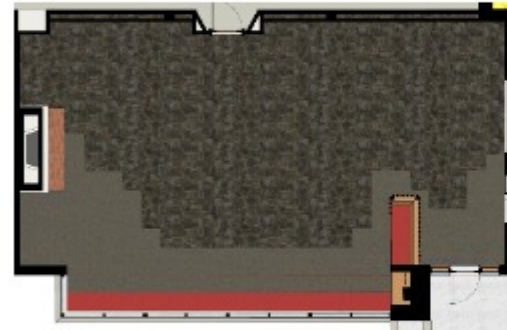


**COLOR & FINISH**

<p>Tac-Wall koroseal_06 harbor</p>	<p>Casework Paint SW 7015</p>	<p>Wall Paint SW 7005</p>					
<p>bentley_TechUpD8 Algorithm 400011</p>							
<p>carpet tile</p>	<p>Existing wood flooring</p>	<p>wilsonart_blackbird 5024 Counter-top</p>	<p>SW 7069 Base Paint</p>	<p>Wood Door (VG FIR)</p>	<p>formica_pencil wood Casework Vertical</p>		

**DRAFT**

# LIBRARY - Finish Options (OPTION A DRAFT)



Casework formica, perdi wood	Base tarbet, 03 burnt Umber
Wall Paint SW 7005	Wood Door (VG FIR)
Gray Accent Paint SW 7015	bentley_misfit Benovolent 807787
Library benches melanin, Blaznero 003	bentley_burnish San Onofre 402927
Tac-Wall koroseal, 87 sandalwood	

**DRAFT**



