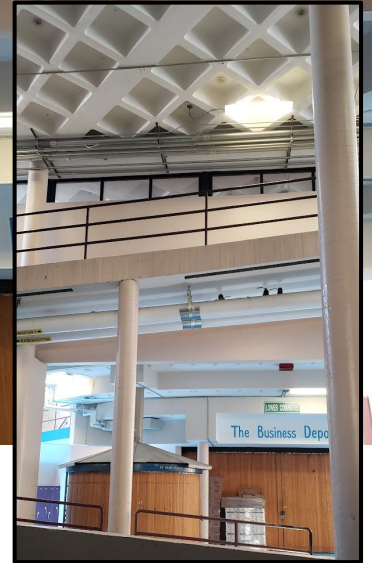




Non-ADA compliant ramps in the 1971 wing



From current library (former cafetorium) looking up towards presentation/lecture hall



On level 3.5 of the 1971 wing

THE POWER OF THE OCEAN & THE HUMAN SPIRIT
THE HUMAN SPIRIT IS AS RESILIENT AS AN OCEAN.
WE MUST UNDERSTAND, THAT THE SAME SALT IN OUR
BODIES CAN BE FOUND IN THE OCEAN WATERS.
THE PULSATING ENERGY OF THE OCEAN RUNS
THROUGH EACH OF US. BOUNDLESS ENERGY,
KNOWLEDGE, WISDOM GIVES THE HUMAN SPIRIT SHAPE.
'KNOWLEDGE IS POWER!'
EDUCATION GIVES US THE TOOLS TO COMPETE.
EDUCATION EMPOWERS THE HUMAN SPIRIT. IT IS
INTRINSIC. EDUCATION IS LIKE A BEACON LIGHT
THAT GUIDES US FORWARD FROM DARKNESS TO LIGHT.
THE OCEAN AND THE HUMAN SPIRIT HAVE SURVIVED
CATASTROPHIC AND CATAclySMIC EVENTS.
OUR INNER STRENGTH PROPELS US FORWARD, JUST
AS THE OCEAN WATERS ARE IN PERPETUAL
MOTION, THE HUMAN SPIRIT IS AS RESILIENT AS
ANY OCEAN!



1971 and 1992 building meet to the right.