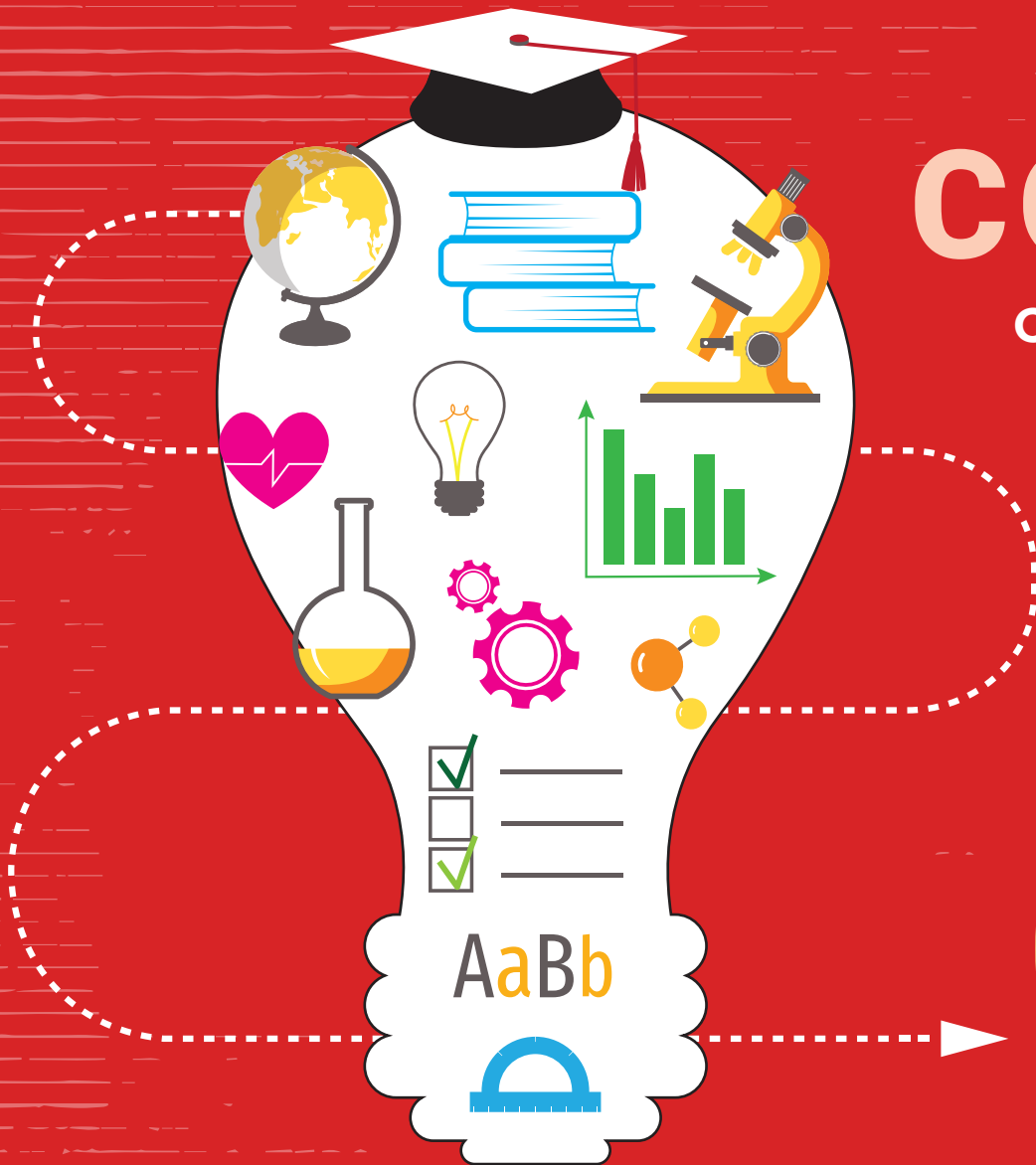


# CONNETQUOT

CENTRAL SCHOOL DISTRICT



2023-2024

CALENDAR

[WWW.CCSDLI.ORG](http://WWW.CCSDLI.ORG)

# AUGUST 2023

JULY 2023						
S	M	T	W	T	F	S
						1
2	3	4	5	6	7	8
9	10	11	12	13	14	15
16	17	18	19	20	21	22
23	24	25	26	27	28	29
30	31					

SEPTEMBER 2023						
S	M	T	W	T	F	S
					1	2
3	4	5	6	7	8	9
10	11	12	13	14	15	16
17	18	19	20	21	22	23
24	25	26	27	28	29	30

## SCHOOL ABBREVIATION KEY:

**CHS** - Connetquot High School  
**CO** - Central Office  
**CSS** - Cherokee Street Elementary  
**EJB** - Edward J. Bosti Elementary

**ELS** - Edith L. Slocum Elementary  
**HBD** - Helen B. Duffield Elementary  
**IH** - Idle Hour Elementary  
**JP** - John Pearl Elementary

**OBMS** - Oakdale-Bohemia Middle School  
**RMS** - Ronkonkoma Middle School  
**SAS** - Sycamore Avenue Elementary

Sunday	Monday	Tuesday	Wednesday	Thursday	Friday	Saturday
		<b>1</b>	<b>2</b>	<b>3</b>	<b>4</b>	<b>5</b>
		<p><b>CHS Summer Physicals Varsity &amp; JV Football 8:00-11:00 a.m.</b></p> <p><b>Music CHS Marching Band Camp 4:30 p.m.</b></p>	<p><b>CHS Summer Physicals Varsity Girls Swim, Varsity Gymnastics, Varsity and JV Girls Tennis, Varsity and JV Girls Soccer 8:00-11:00 a.m.</b></p> <p><b>Music CHS Marching Band Camp 4:30 p.m.</b></p>	<p><b>CHS/RMS Summer Physicals Varsity and JV Girls Field Hockey, Varsity and JV Cheer, Varsity Girls Cross-Country, Varsity and JV Girls Volleyball, RMS Girls Soccer 7/8 @ CHS 8:00-11:00 a.m.</b></p> <p><b>Music CHS Marching Band Camp 4:30 p.m.</b></p>	<p><b>CHS 9/9 ACT Registration Deadline</b></p> <p><b>Music CHS Marching Band Camp 4:30 p.m.</b></p>	
<b>6</b>	<b>7</b>	<b>8</b>	<b>9</b>	<b>10</b>	<b>11</b>	<b>12</b>
		<p><b>CHS Summer Physicals Varsity and JV Boys Golf, Varsity and JV Boys Soccer, Varsity and JV Boys Volleyball, Varsity Boys Cross-Country 8:00-11:00 a.m. @ CHS</b></p> <p><b>Board of Education Meeting 7:30 p.m.</b></p>	<p><b>OBMS/RMS FF Registration MS Fall Sports</b></p> <p><b>OBMS Summer Physicals OBMS Girls Soccer 7/8, OBMS Girls Cross-Country 7/8, OBMS Girls Field Hockey 7/8, OBMS Girls Tennis 7/8 OBMS Cheer 7/8 @ CHS 8:00-11:00 a.m.</b></p>	<p><b>OBMS Summer Physicals OBMS Football 7/8, OBMS Boys Cross-Country 7/8, OBMS Boys Soccer 7/8 @ CHS 8:00-10:00 a.m.</b></p> <p><b>RMS Summer Physicals RMS Girls Tennis 7/8, RMS Cheerleaders 7/8 @ CHS 10:00-11:30 a.m.</b></p>		

13	14	<p>15</p> <p><b>RMS Summer Physicals RMS Football 7/8, RMS Boys Cross-Country 7/8, RMS Boys Soccer 7/8 @ CHS 8:00-10:00 a.m.</b></p> <p><b>RMS Summer Physicals RMS Girls Cross-Country 7/8, RMS Girls Field Hockey 7/8 @ CHS 10:00-11:00 a.m.</b></p> <p><b>IH PTA Kindergarten Playdate 10:00-11:00 a.m.</b></p>	16	<p>17</p> <p><b>IH PTA Kindergarten Playdate (Raindate) 10:00-11:00 a.m.</b></p>	<p>18</p> <p><b>CHS 9/9 ACT Late Registration Deadline</b></p> <p><b>CO SEPTA Ice Cream Social 6:30 p.m.</b></p>	19
20	<p>21</p> <p><b>CHS Senior Picture Retakes</b></p> <p><b>CHS First Day of CHS Fall Sports</b></p>	<p>22</p> <p><b>CHS Senior Picture Retakes</b></p> <p><b>HBD Pre-K Play Date 10:00 a.m.</b></p> <p><b>HBD Pre-K Bus Ride 11:15 a.m.</b></p> <p><b>Board of Education Meeting 7:30 p.m.</b></p>	23	<p>24</p> <p><b>HBD Pre-K Play Date (Raindate) 10:00 a.m.</b></p>	25	26
27	<p>28</p> <p><b>EJB New Student Welcome 9:00 a.m.</b></p> <p><b>EJB Kindergarten Playdate/Bus Ride 10:00 a.m.</b></p> <p><b>RMS 6th Grade Orientation 10:00 a.m.</b></p> <p><b>OBMS 6th Grade Orientation 10:00 a.m.</b></p> <p><b>OBMS 6th Grade Walk-Through 10:00-11:00 a.m.</b></p>	<p>29</p> <p><b>OBMS Grade 7/8 Walk-Through 10:00-11:00 a.m.</b></p> <p><b>EJB Kindergarten Playdate/Bus Ride (Raindate) 10:00 a.m.</b></p>	<p>30</p> <p><b>CHS Freshman Orientation 8:30 a.m.</b></p>	<p>31</p> <p><b>SUPERINTENDENT'S CONFERENCE DAY</b></p>	<div data-bbox="1535 1157 1921 1372" style="background-color: red; color: white; padding: 10px; text-align: center;"> <p><b>All events are subject to change/cancellation. Visit the district website <a href="http://www.ccsdli.org">www.ccsdli.org</a> for news &amp; upcoming events.</b></p> </div>	

# SEPTEMBER 2023

AUGUST 2023						
S	M	T	W	T	F	S
		1	2	3	4	5
6	7	8	9	10	11	12
13	14	15	16	17	18	19
20	21	22	23	24	25	26
27	28	29	30	31		

OCTOBER 2023						
S	M	T	W	T	F	S
1	2	3	4	5	6	7
8	9	10	11	12	13	14
15	16	17	18	19	20	21
22	23	24	25	26	27	28
29	30	31				

## SCHOOL ABBREVIATION KEY:

**CHS** - Connetquot High School  
**CO** - Central Office  
**CSS** - Cherokee Street Elementary  
**EJB** - Edward J. Bosti Elementary

**ELS** - Edith L. Slocum Elementary  
**HBD** - Helen B. Duffield Elementary  
**IH** - Idle Hour Elementary  
**JP** - John Pearl Elementary

**OBMS** - Oakdale-Bohemia Middle School  
**RMS** - Ronkonkoma Middle School  
**SAS** - Sycamore Avenue Elementary

Sunday	Monday	Tuesday	Wednesday	Thursday	Friday	Saturday
					1	2
<div style="background-color: red; color: white; padding: 10px; border: 1px solid black;"> <p>All events are subject to change/cancellation. Visit the district website <a href="http://www.ccsdli.org">www.ccsdli.org</a> for news &amp; upcoming events.</p> </div>						
3	4 <b>Labor Day</b> <b>District Buildings Closed</b>	5 <b>Teacher Orientation Day</b> <b>SAS</b> Kindergarten Playdate 11:00 a.m.-12:00 p.m. <b>ELS</b> Kindergarten Playdate/Supply Drop-Off 2:00 p.m. <b>CSS</b> PTA Playdate/School Supply Drop-Off 1:00-2:00 p.m. <b>EJB</b> Supply Drop-Off 2:00 p.m. <b>Board of Education Meeting</b> 7:30 p.m.	6 <b>First Day of School</b> <b>IH</b> Boo-Hoo Breakfast 10:15 a.m.	7 <b>CHS SCHOOL PICTURES - PE</b> Classes (Gr. 9-11) <b>OBMS and RMS MS</b> Fall Sports Begin <b>PTA Council Meeting</b> @ DO 7:00 p.m.	8 <b>CHS 10/7 SAT</b> Registration Deadline <b>CHS SCHOOL PICTURES - PE</b> Classes (Gr. 9-11) <b>IH</b> Welcome Back Carnival 4:30-6:30 p.m.	9 <b>ACT @ CHS</b>

<p style="text-align: center; font-size: 2em;">10</p>	<p style="text-align: center; font-size: 2em;">11</p> <p><b>ELS</b> PTA Greeting Card Box Sale Begins</p> <p><b>ELS</b> PTA Spirit Wear Sale Begins</p> <p><b>HBD</b> PTA Wrapping Paper Kickoff</p> <p><b>CHS</b> PTSA Meeting 7:00 p.m.</p>	<p style="text-align: center; font-size: 2em;">12</p> <p><b>SAS</b> Back to School Night 6:00 p.m.</p> <p><b>HBD</b> Back to School Night 6:00 p.m.</p> <p><b>JP</b> PTA Meeting 7:00 p.m.</p>	<p style="text-align: center; font-size: 2em;">13</p> <p><b>OBMS</b> Back to School Night 7:00 p.m.</p> <p><b>RMS</b> Back to School Night 7:00 p.m.</p>	<p style="text-align: center; font-size: 2em;">14</p> <p><b>JP</b> Back to School Night 6:00-8:00 p.m.</p> <p><b>IH</b> Back to School Night 5:30-8:00 p.m.</p> <p><b>EJB</b> Back to School Night 5:45-7:15 p.m.</p> <p><b>ELS</b> Back to School Night 6:00-8:00 p.m.</p> <p><b>RMS</b> PTA Meeting 7:00 p.m.</p>	<p style="text-align: center; font-size: 2em;">15</p> <p><b>OBMS</b> Grade 6 Welcome BBQ 4:00-6:30 p.m.</p>	<p style="text-align: center; font-size: 2em;">16</p>
<p style="text-align: center; font-size: 2em;">17</p> <p><b>CHS</b> Senior Breakfast 8:00-11:00 a.m.</p>	<p style="text-align: center; font-size: 2em;">18</p> <p><b>CSS</b> PTA Spiritwear Fundraiser Begins</p> <p><b>ELS</b> PTA Meeting 7:00 p.m.</p> <p><b>EJB</b> PTA Meeting 7:00 p.m.</p> <p><b>HBD</b> PTA Meeting 7:00 p.m.</p>	<p style="text-align: center; font-size: 2em;">19</p> <p><b>Board of Education Meeting 7:30 p.m.</b></p>	<p style="text-align: center; font-size: 2em;">20</p> <p><b>OBMS</b> Picture Day</p> <p><b>OBMS</b> Gr. 6 Welcome BBQ (Raindate) 4:00-6:30 p.m.</p> <p><b>CSS</b> Back to School Night 6:00-8:00 p.m.</p> <p><b>OBMS</b> PTA Meeting 7:00 p.m.</p>	<p style="text-align: center; font-size: 2em;">21</p> <p><b>OBMS</b> Picture Day</p> <p><b>CHS</b> Open School Night 7:00-9:00 p.m.</p>	<p style="text-align: center; font-size: 2em;">22</p> <p><b>CHS</b> 10/28 ACT Registration Deadline</p> <p><b>CSS</b> PTA Spiritwear Fundraiser Ends</p> <p><b>EJB</b> PTA Welcome Back Social 5:30-7:30 p.m.</p> <p><b>RMS</b> Grades 6-8 Welcome Back Dance 7:00-9:00 p.m.</p>	<p style="text-align: center; font-size: 2em;">23</p>
<p style="text-align: center; font-size: 2em;">24</p>	<p style="text-align: center; font-size: 2em;">25</p> <p style="text-align: center;"><b>YOM KIPPUR SCHOOLS CLOSED</b></p>	<p style="text-align: center; font-size: 2em;">26</p> <p><b>CHS</b> 10/7 SAT Late Registration Deadline</p> <p><b>CHS</b> Spirit Week Begins</p> <p><b>SAS</b> PTA Book Fair</p> <p><b>EJB</b> PTA Welcome Back Social (Raindate) 5:30-7:30 p.m.</p> <p><b>CHS</b> Connetquot/Sayville College Fair @ Sayville HS 7:00 p.m.</p>	<p style="text-align: center; font-size: 2em;">27</p> <p><b>EJB</b> SBMT Meeting 8:35 a.m.</p> <p><b>SAS</b> PTA Book Fair</p> <p><b>CSS</b> PTA Meeting 7:00 p.m.</p> <p><b>CHS</b> Tri-M Honor Society Induction Ceremony 7:00 p.m.</p> <p><b>RMS</b> NJHS Induction Ceremony 7:00 p.m.</p>	<p style="text-align: center; font-size: 2em;">28</p> <p><b>SAS</b> PTA Book Fair</p> <p><b>ELS</b> PTA Hollyrock Assembly</p> <p><b>SAS</b> PTA Meeting 7:00 p.m.</p> <p>SEPTA Meeting 7:00 p.m. @ CO</p>	<p style="text-align: center; font-size: 2em;">29</p> <p><b>ELS</b> PTA Greeting Card Sale Ends</p> <p><b>ELS</b> PTA Spirit Wear Sale Ends</p> <p><b>HBD</b> PTA Wrapping Paper Sale Ends</p> <p><b>CHS</b> Spirit Week Ends</p> <p><b>IH</b> PTA Fall Picture Day</p> <p><b>IH</b> PTA Welcome Back Carnival (Raindate) 4:30-6:30 p.m.</p> <p><b>CHS</b> Homecoming Pep Rally Parade 4:30 p.m.</p> <p>Football Game 7:00 p.m.</p>	<p style="text-align: center; font-size: 2em;">30</p> <p><b>Districtwide</b> Community Wellness Day @ Connetquot Public Library 11:00 a.m.-2:00 p.m.</p>

# OCTOBER 2023

SEPTEMBER 2023						
S	M	T	W	T	F	S
				1	2	
3	4	5	6	7	8	9
10	11	12	13	14	15	16
17	18	19	20	21	22	23
24	25	26	27	28	29	30

NOVEMBER 2023						
S	M	T	W	T	F	S
				1	2	3
4	5	6	7	8	9	10
11	12	13	14	15	16	17
18	19	20	21	22	23	24
25	26	27	28	29	30	

## SCHOOL ABBREVIATION KEY:

**CHS** - Connetquot High School  
**CO** - Central Office  
**CSS** - Cherokee Street Elementary  
**EJB** - Edward J. Bosti Elementary

**ELS** - Edith L. Slocum Elementary  
**HBD** - Helen B. Duffield Elementary  
**IH** - Idle Hour Elementary  
**JP** - John Pearl Elementary

**OBMS** - Oakdale-Bohemia Middle School  
**RMS** - Ronkonkoma Middle School  
**SAS** - Sycamore Avenue Elementary

Sunday	Monday	Tuesday	Wednesday	Thursday	Friday	Saturday
1	2	3	4	5	6	7
	<p><b>ELS</b> Fall Plant Sale Begins</p> <p><b>SAS</b> Fall Picture Day</p> <p><b>CHS</b> PTSA Meeting 7:00 p.m.</p>	<p><b>SAS</b> Fall Picture Day</p> <p><b>ELS</b> PTA School Pictures</p> <p><b>RMS</b> School Pictures</p> <p><b>PTA Council Meeting 7:00 p.m. @ DO</b></p>	<p><b>RMS</b> School Pictures</p>	<p><b>IH</b> PTA Picture Retakes</p> <p><b>EJB</b> PTA School Pictures</p> <p><b>CHS</b> Financial Aid Night 7:00 p.m.</p>	<p><b>CHS</b> 11/4 SAT Registration Deadline</p> <p><b>CHS</b> 10/28 ACT Late Registration Deadline</p> <p><b>CSS</b> PTA Fall Plant Pickup</p> <p><b>HBD</b> PTA Fall Picture Day</p>	<p>SAT @ <b>CHS</b></p>
8	9	10	11	12	13	14
	<p><b>COLUMBUS DAY</b></p> <p><b>DISTRICT BUILDINGS CLOSED</b></p> <p><b>OBMS/RMS</b> FF Registration MS Early Winter Sports</p>	<p><b>IH</b> PTA Class Mother Tea 10:15 a.m.</p> <p><b>Board of Education Meeting 7:30 p.m.</b></p>	<p><b>CSS</b> PTA Fall Picture Day</p> <p><b>EJB</b> PTA Book Fair</p> <p><b>EJB</b> PTA Evening Book Fair 6:00-7:30 p.m.</p> <p><b>RMS</b> PTA Meeting 7:00 p.m.</p>	<p><b>CSS</b> PTA Fall Picture Day</p> <p><b>ELS</b> PTA Book Fair</p> <p><b>EJB</b> PTA Book Fair</p> <p><b>OBMS</b> Tri-M Honor Society Induction Ceremony 7:00 p.m.</p>	<p><b>OBMS/RMS/CHS</b> Secondary Progress Reports Posted</p> <p><b>OBMS/RMS MS Half-Day for Parent-Teacher Conferences 11:20 a.m.</b></p> <p><b>ELS</b> PTA Fall Plant Sale Ends</p> <p><b>IH</b> PTA Pumpkin Patch</p> <p><b>IH</b> Trunk or Treat 5:00-6:00 p.m.</p>	

<p style="text-align: center; font-size: 2em;">15</p>	<p style="text-align: center; font-size: 2em;">16</p> <p><b>CHS</b> Picture Retakes (Gr. 9-11)</p> <p><b>CHS</b> FF Registration CHS Winter Sports</p> <p><b>ELS</b> PTA Meeting 7:00 p.m.</p> <p><b>EJB</b> PTA Meeting 7:00 p.m.</p>	<p style="text-align: center; font-size: 2em;">17</p> <p><b>CHS</b> Steered Straight Student Assembly</p> <p><b>CHS</b> Steered Straight Parent Night Workshop 7:00 p.m.</p>	<p style="text-align: center; font-size: 2em;">18</p> <p>PSAT @ CHS 8:00 a.m.</p> <p><b>CHS</b> Steered Straight Student Assembly</p> <p><b>RMS</b> Book Fair</p> <p><b>CSS</b> PTA Fall Book Fair</p> <p><b>Music CHS</b> Newsday Marching Band Festival @ Mitchel Field 7:00 p.m.</p> <p><b>JP</b> PTA Meeting 7:00 p.m.</p>	<p style="text-align: center; font-size: 2em;">19</p> <p><b>CSS</b> PTA Fall Book Fair</p> <p><b>RMS</b> Book Fair</p> <p><b>ELS</b> PTA Finks Farm Family Fun Night @ Finks Farm 4:30 p.m.</p> <p><b>IH</b> PTA Meeting 7:00 p.m.</p> <p><b>Districtwide</b> SEPTA Meeting @ CO 7:00 p.m.</p>	<p style="text-align: center; font-size: 2em;">20</p> <p><b>CHS</b> 11/4 SAT Late Registration Deadline</p> <p><b>HBD</b> PTA Fall Plant Sale</p> <p><b>HBD</b> PTA Trunk or Treat 6:00 p.m.</p> <p><b>ELS</b> PTA Spooktacular Trunk or Treat Night 6:00 p.m.</p> <p><b>ELS</b> PTA Thanksgiving Food Drive Begins</p> <p><b>EJB</b> PTA Spooktacular 5:30-8:30 p.m.</p> <p><b>CSS</b> PTA PARP Night 6:00 p.m.</p>	<p style="text-align: center; font-size: 2em;">21</p>
<p style="text-align: center; font-size: 2em;">22</p>	<p style="text-align: center; font-size: 2em;">23</p> <p><b>Districtwide</b> United We Stand for a Drug- Free Community Week</p> <p><b>SAS</b> PTA Pumpkin Roll</p> <p><b>HBD</b> PTA Meeting 7:00 p.m.</p>	<p style="text-align: center; font-size: 2em;">24</p> <p><b>Districtwide</b> United We Stand for a Drug- Free Community Week</p> <p><b>EJB</b> PTA Pumpkin Patch</p> <p><b>Board of Education Meeting 7:30 p.m.</b></p>	<p style="text-align: center; font-size: 2em;">25</p> <p><b>Districtwide</b> United We Stand for a Drug-Free Community Week</p> <p><b>EJB</b> PTA Pumpkin Patch; <b>EJB</b> SBMT 8:35 a.m.</p> <p><b>SAS</b> PTA Pumpkin Roll (Raindate)</p> <p><b>SAS</b> PTA Meeting 7:00 p.m.</p> <p><b>CSS</b> PTA Meeting 7:00 p.m.</p> <p><b>CHS</b> National Honor Society Induction Ceremony 7:00 p.m.</p>	<p style="text-align: center; font-size: 2em;">26</p> <p><b>Districtwide</b> United We Stand for a Drug- free Community Week</p> <p><b>CSS</b> PTA Pumpkin Patch</p> <p><b>Music RMS</b> Tri-M Honor Society Induction Ceremony 7:00 p.m.</p>	<p style="text-align: center; font-size: 2em;">27</p> <p><b>Districtwide</b> United We Stand for a Drug-free Community Week</p> <p><b>CSS</b> Pumpkin Patch (Raindate)</p> <p><b>JP</b> Boo Bash 5:30-8:30 p.m.</p> <p><b>EJB</b> PTA Spooktacular (Raindate) 5:30-8:30 p.m.</p> <p><b>SAS</b> Trunk or Treat 6:00-8:30 p.m.</p> <p><b>RMS</b> Halloween Dance 7:00-9:00 p.m.</p>	<p style="text-align: center; font-size: 2em;">28</p> <p>ACT @ <b>CHS</b></p> <p><b>CHS</b> Safe Halloween 12:00-2:00 p.m.</p>
<p style="text-align: center; font-size: 2em;">29</p>	<p style="text-align: center; font-size: 2em;">30</p> <p><b>CHS</b> Thanksgiving Food Drive Begins</p> <p><b>ELS</b> PTA Pumpkin Patch</p> <p><b>SAS</b> Trunk or Treat (Raindate) 6:00-8:30 p.m.</p>	<p style="text-align: center; font-size: 2em;">31</p> <p><b>ELS</b> PTA Icee Day</p> <p><b>ELS</b> Halloween Parade 9:30 a.m.</p> <p><b>EJB</b> Halloween Parade Pre-K-2</p> <p><b>CSS</b> Halloween Parade Gr. K-5 9:00 a.m.</p> <p><b>IH</b> Halloween Parade 11:00 a.m.</p>			<div style="background-color: red; color: white; padding: 10px; text-align: center;"> <p><b>All events are subject to change/ cancellation. Visit the district website <a href="http://www.ccsdli.org">www.ccsdli.org</a> for news &amp; upcoming events.</b></p> </div>	

# NOVEMBER 2023

OCTOBER 2023						
S	M	T	W	T	F	S
1	2	3	4	5	6	7
8	9	10	11	12	13	14
15	16	17	18	19	20	21
22	23	24	25	26	27	28
29	30	31				

DECEMBER 2023						
S	M	T	W	T	F	S
					1	2
3	4	5	6	7	8	9
10	11	12	13	14	15	16
17	18	19	20	21	22	23
24	25	26	27	28	29	30
31						

## SCHOOL ABBREVIATION KEY:

**CHS** - Connetquot High School  
**CO** - Central Office  
**CSS** - Cherokee Street Elementary  
**EJB** - Edward J. Bosti Elementary

**ELS** - Edith L. Slocum Elementary  
**HBD** - Helen B. Duffield Elementary  
**IH** - Idle Hour Elementary  
**JP** - John Pearl Elementary

**OBMS** - Oakdale-Bohemia Middle School  
**RMS** - Ronkonkoma Middle School  
**SAS** - Sycamore Avenue Elementary

Sunday	Monday	Tuesday	Wednesday	Thursday	Friday	Saturday
			1	2	3	4
<p>All events are subject to change/ cancellation. Visit the district website <a href="http://www.ccsdli.org">www.ccsdli.org</a> for news &amp; upcoming events.</p>			<p><b>EJB</b> PTA Picture Make-Up Day</p> <p><b>CSS</b> PTA Gift Card Fundraiser Begins</p>	<p><b>RMS</b> PTA Picture Makeup Day and 8th Grade Photo</p> <p><b>CHS</b> Evening Parent/Teacher Conferences 7:00 p.m.</p> <p>PTA Council Meeting 7:00 p.m. @ DO</p>	<p><b>CHS</b> 12/2 SAT Registration Deadline</p> <p><b>CHS</b> 12/9 ACT Registration Deadline</p> <p><b>CSS</b> PTA Fall Picture Retake Day/Grade 5 Class Photo</p> <p><b>HBD</b> PTA Picture Retakes</p> <p><b>CHS</b> Fall Drama Production 7:00 p.m.</p>	<p>SAT @ <b>CHS</b></p> <p><b>CHS</b> Fall Drama Production 7:00 p.m.</p>
5	6	7	8	9	10	11
	<p><b>OBMS/RMS</b> First Day Early Winter MS Sports</p> <p><b>OBMS/RMS</b> MS Evening Parent/Teacher Conferences 7:00 p.m.</p> <p><b>CHS</b> PTSA Meeting 7:00 p.m.</p>	<p><b>ELECTION DAY NO STUDENTS</b></p> <p><b>OBMS/RMS</b> Middle Schools Parent-Teacher Evening Conferences</p> <p><b>ELS</b> PTA Bake Sale</p>	<p><b>Music</b> NYSCAME Rehearsal @ CHS 4:00-8:00 p.m.</p> <p><b>ELS</b> Evening Parent-Teacher Conferences 6:00-8:00 p.m.</p> <p><b>CSS</b> Evening Parent-Teacher Conferences 6:00-8:00 p.m.</p> <p><b>JP</b> Evening Parent-Teacher Conferences 6:00-8:00 p.m.</p>	<p><b>CHS</b> Veterans Day Ceremony</p> <p><b>RMS</b> Veterans Breakfast Celebration 9:00 a.m.</p> <p><b>IH</b> Veterans Day Assembly 10:15 a.m.</p> <p><b>JP</b> Veterans Day Celebration 10:30 a.m.</p> <p><b>IH</b> PTA Meeting 7:00 p.m.</p> <p><b>OBMS</b> National Junior Honor Society Induction Ceremony 7:00 p.m.</p>	<p><b>VETERANS DAY DISTRICT BUILDING CLOSED</b></p>	



<p style="text-align: center; font-size: 2em;">12</p>	<p style="text-align: center; font-size: 2em;">13</p> <p><b>SAS</b> PTA Thanksgiving Food Drive Begins</p> <p><b>CHS</b> First Day CHS Winter Sports</p> <p><b>RMS</b> Thanksgiving Food Drive Begins</p> <p><b>SAS</b> Evening Parent-Teacher Conferences 6:00-8:00 p.m.</p> <p><b>EJB</b> PTA Meeting 7:00 p.m.</p>	<p style="text-align: center; font-size: 2em;">14</p> <p><b>CHS</b> Armed Services Vocational Aptitude Battery (ASVAB) 8:00 a.m.</p> <p><b>SAS</b> Evening Parent-Teacher Conferences 6:00-8:00 p.m.</p> <p><b>Board of Education Meeting 7:00 p.m.</b></p>	<p style="text-align: center; font-size: 2em;">15</p> <p><b>SAS</b> Fall Picture Day Make-Up</p> <p><b>ELS</b> PTA School Pictures Retake Day 7:00 p.m. @ OBMS</p> <p><b>OBMS</b> PTA Meeting 7:00 p.m.</p> <p><b>RMS</b> PTA Meeting 7:00 p.m.</p>	<p style="text-align: center; font-size: 2em;">16</p> <p><b>IH</b> PTA Book Fair</p> <p><b>ELS</b> PTA Thanksgiving Basket Family Night 6:00 p.m.</p> <p><b>HBD</b> Evening Parent/Teacher Conferences 6:00-8:00 p.m.</p> <p><b>CHS</b> Financial Aid Completion Event 7:00 p.m.</p> <p><b>JP</b> PTA Meeting 7:00 p.m.</p>	<p style="text-align: center; font-size: 2em;">17</p> <p><b>CHS</b> 12/2 SAT Late Registration Deadline</p> <p><b>CHS</b> 12/9 ACT Late Registration Deadline</p> <p><b>RMS</b> Thanksgiving Food Drive Ends</p> <p><b>IH</b> PTA Book Fair</p> <p><b>SAS</b> PTA Thanksgiving Food Drive Ends</p> <p><b>HBD</b> PTA Book Fair</p> <p><b>CHS</b> Freshman Awareness Weekend 4:00 p.m.</p> <p><b>OBMS</b> Talent Show 7:00 p.m.</p> <p><b>IH</b> Evening Conferences 6:00-8:00 p.m.</p>	<p style="text-align: center; font-size: 2em;">18</p> <p><b>CHS</b> Freshman Awareness Weekend Ends at 12:00 p.m.</p>
<p style="text-align: center; font-size: 2em;">19</p>	<p style="text-align: center; font-size: 2em;">20</p> <p><b>ELS</b> PTA Meeting 7:00 p.m.</p>	<p style="text-align: center; font-size: 2em;">21</p> <p><b>OBMS/RMS/CHS</b> Secondary Report Cards Posted</p>	<p style="font-size: 2em;">22</p> <p style="font-size: 2em;">23</p> <p style="font-size: 2em;">24</p> <p style="font-size: 1.5em; font-weight: bold;">THANKSGIVING DAY</p> <div style="border: 1px solid black; padding: 5px; margin: 10px auto; width: 80%;"> <p style="text-align: center; font-weight: bold;">Thanksgiving Recess – District Buildings Closed</p> </div>			<p style="text-align: center; font-size: 2em;">25</p>
<p style="text-align: center; font-size: 2em;">26</p>	<p style="text-align: center; font-size: 2em;">27</p> <p><b>CSS</b> PTA Gift Card Fundraiser Begins</p> <p><b>ELS</b> PTA Giving Tree and Reflections Begins</p> <p><b>EJB</b> PTA 5th Grade Circus Begins</p> <p><b>SAS</b> PTA Meeting 7:00 p.m.</p> <p><b>HBD</b> PTA Meeting 7:00 p.m.</p>	<p style="text-align: center; font-size: 2em;">28</p> <p><b>Board of Education Meeting 7:30 p.m.</b></p>	<p style="text-align: center; font-size: 2em;">29</p> <p><b>EJB</b> SBMT Meeting 8:35 a.m.</p> <p><b>CHS</b> National English Honor Society Induction Ceremony 6:00-7:00 p.m.</p> <p><b>CSS</b> PTA Meeting 7:00 p.m.</p>	<p style="text-align: center; font-size: 2em;">30</p> <p><b>IH</b> PTA Holiday Boutique</p> <p><b>EJB</b> Evening Parent-Teacher Conferences 5:45 p.m.</p>		

# DECEMBER 2023

NOVEMBER 2023						
S	M	T	W	T	F	S
			1	2	3	4
5	6	7	8	9	10	11
12	13	14	15	16	17	18
19	20	21	22	23	24	25
26	27	28	29	30		

JANUARY 2024						
S	M	T	W	T	F	S
	1	2	3	4	5	6
7	8	9	10	11	12	13
14	15	16	17	18	19	20
21	22	23	24	25	26	27
28	29	30	31			

## SCHOOL ABBREVIATION KEY:

**CHS** - Connetquot High School  
**CO** - Central Office  
**CSS** - Cherokee Street Elementary  
**EJB** - Edward J. Bosti Elementary

**ELS** - Edith L. Slocum Elementary  
**HBD** - Helen B. Duffield Elementary  
**IH** - Idle Hour Elementary  
**JP** - John Pearl Elementary

**OBMS** - Oakdale-Bohemia Middle School  
**RMS** - Ronkonkoma Middle School  
**SAS** - Sycamore Avenue Elementary

Sunday	Monday	Tuesday	Wednesday	Thursday	Friday	Saturday
					<b>1</b>	<b>2</b>
<div style="background-color: red; color: white; padding: 10px; border: 1px solid black;"> <p>All events are subject to change/cancellation. Visit the district website <a href="http://www.ccsdli.org">www.ccsdli.org</a> for news &amp; upcoming events.</p> </div>					<p><b>IH</b> PTA Holiday Boutique</p> <p><b>HBD</b> PTA Winter Wonderland 6:00 p.m.</p> <p><b>IH</b> PTA Polar Express 6:00-7:00 p.m.</p> <p><b>EJB</b> PTA 5th Grade Circus Ends; <b>EJB</b> Circus Night Event @ <b>OBMS</b> 7:00 p.m.</p>	SAT @ <b>CHS</b>
<b>3</b>	<b>4</b>	<b>5</b>	<b>6</b>	<b>7</b>	<b>8</b>	<b>9</b>
	<p><b>SAS</b> Holiday Boutique</p> <p><b>Music CSS</b> Winter Concert @ <b>RMS</b> 7:00 p.m.</p> <p><b>CHS</b> PTA Meeting 7:00 p.m.</p>	<p><b>SAS</b> Holiday Boutique</p> <p><b>OBMS</b> PTA Holiday Boutique</p> <p><b>EJB</b> PTA Holiday Fair</p> <p><b>CHS</b> Graduation Cap and Gown Sale</p> <p><b>EJB</b> PTA Holiday Fair 6:00-7:30 p.m.</p> <p><b>Music HBD</b> Winter Concert @ <b>RMS</b> 7:00 p.m.</p> <p><b>JP</b> PTA Meeting 7:00 p.m.</p>	<p><b>CHS</b> Graduation Cap and Gown Sale</p> <p><b>SAS</b> Holiday Boutique</p> <p><b>OBMS</b> PTA Holiday Boutique</p> <p><b>CSS</b> PTA Holiday Boutique</p> <p><b>RMS</b> Holiday Store</p> <p><b>EJB</b> PTA Holiday Fair</p> <p><b>SAS</b> PTA Santa Night 6:00-8:00 p.m.</p> <p><b>RMS</b> Winter Concert I @ <b>CHS</b> 7:00 p.m.</p> <p><b>Music JP</b> Winter Concert @ <b>OBMS</b> 7:00 p.m.</p>	<p><b>CSS</b> PTA Holiday Boutique</p> <p><b>RMS</b> Holiday Store</p> <p><b>RMS</b> Holiday Tree Lighting 7:00 p.m.</p> <p><b>OBMS</b> Winter Concert I @ <b>CHS</b> 7:00 p.m.</p>	<p><b>ELEMENTARY HALF-DAY PARENT-TEACHER CONFERENCES</b></p> <p><b>CHS</b> Student Government Winter Spectacular 5:00-8:00 p.m.</p>	<p>ACT @ <b>CHS</b></p> <p><b>ELS</b> PTA Holiday Breakfast 9:30 a.m.</p>

10	11 <b>Music RMS</b> Winter Concert 2 @ CHS 7:00 p.m.	12 <b>Board of Education Meeting 7:30 p.m.</b>	13 <b>ELS</b> PTA Icee Day <b>CSS</b> PTA Santa Photos/Winter Wonderland 6:00 p.m. <b>Music OBMS</b> Winter Concert 2 @ CHS 7:00 p.m.	14 <b>ELS</b> PTA Holiday Store <b>Music CHS</b> Winter Concert I 7:00 p.m. <b>IH</b> PTA Meeting 7:00 p.m.	15 <b>JP</b> Milk and Cookies <b>ELS</b> PTA Holiday Store <b>HBD</b> PTA Holiday Fair <b>Music CHS</b> Winter Concert 2 7:00 p.m.	16
17	18 <b>ELS</b> PTA Giving Tree and Reflections Ends <b>OBMS/RMS</b> FF Registration MS Late Winter Sports <b>Music SAS</b> Winter Concert @ OBMS 7:00 p.m. <b>EJB</b> PTA Meeting 7:00 p.m.	19 <b>Music ELS</b> Winter Concert @ RMS 7:00 p.m. <b>Music IH</b> Winter Concert @ OBMS 7:00 p.m.	20 <b>EJB</b> PTA Winter Wishes; EJB SBMT 8:35 a.m. <b>Music EJB</b> Winter Concert @ OBMS 7:00 p.m.	21	22 <b>OBMS/RMS/CHS</b> Secondary Progress Reports Posted  Elementary Report Cards Distributed	23
24	25 26 27 28 29 <b>Winter Recess – Schools Closed</b>					30
31						

# JANUARY 2024

DECEMBER 2023						
S	M	T	W	T	F	S
				1	2	
3	4	5	6	7	8	9
10	11	12	13	14	15	16
17	18	19	20	21	22	23
24	25	26	27	28	29	30
31						

FEBRUARY 2024						
S	M	T	W	T	F	S
				1	2	3
4	5	6	7	8	9	10
11	12	13	14	15	16	17
18	19	20	21	22	23	24
25	26	27	28	29		

## SCHOOL ABBREVIATION KEY:

**CHS** - Connetquot High School  
**CO** - Central Office  
**CSS** - Cherokee Street Elementary  
**EJB** - Edward J. Bosti Elementary

**ELS** - Edith L. Slocum Elementary  
**HBD** - Helen B. Duffield Elementary  
**IH** - Idle Hour Elementary  
**JP** - John Pearl Elementary

**OBMS** - Oakdale-Bohemia Middle School  
**RMS** - Ronkonkoma Middle School  
**SAS** - Sycamore Avenue Elementary

Sunday	Monday	Tuesday	Wednesday	Thursday	Friday	Saturday
	<b>1</b> NEW YEARS DAY HOLIDAY RECESS DISTRICT BUILDINGS CLOSED	<b>2</b>	<b>3</b> OBMS PTA Meeting 7:00 p.m.	<b>4</b>	<b>5</b> OBMS/RMS MS Half-Day for Parent/ Teacher Conferences CHS 2/10 ACT Registration Deadline Music LISFA Secondary Festival EJB PTA Family Fun Night 6:30-8:30 p.m. SAS PTA Bingo Night 6:30-8:30 p.m.	<b>6</b> Music LISFA Secondary Festival
<b>7</b> Music LISFA Secondary Festival	<b>8</b> CHS PTSA Meeting 7:00 p.m.	<b>9</b> Board of Education Meeting 7:30 p.m.	<b>10</b> CHS Curriculum Fair for Grade 9 Students/ Parents 7:00 p.m.	<b>11</b> Music RMS Musical Production 7:00 p.m.	<b>12</b> Music RMS Musical Production 7:00 p.m.	<b>13</b> Music RMS Musical Production 7:00 p.m.

14	<p style="text-align: center;">15</p> <p style="text-align: center;"><b>Martin Luther King Jr. Day</b></p> <p style="text-align: center;"><b>Schools Closed</b></p>	<p style="text-align: center;">16</p> <p><b>OBMS/RMS</b> First Day MS Late Winter Sports</p> <p>PTA Council Meeting @ DO 7:00 p.m.</p>	<p style="text-align: center;">17</p> <p><b>JP</b> PTA Meeting 7:00 p.m.</p> <p><b>RMS</b> PTA Meeting 7:00 p.m.</p> <p><b>CHS</b> Curriculum Fair Make-Up Date (If Needed) 7:00 p.m.</p>	<p style="text-align: center;">18</p> <p>SEPTA Meeting @ CO 7:00 p.m.</p> <p><b>IH</b> PTA Meeting 7:00 p.m.</p>	<p style="text-align: center;">19</p> <p><b>CHS</b> 2/10 ACT Late Registration Deadline</p> <p><b>Music LISFA</b> Intermediate Festival</p> <p><b>CSS</b> PTA Family Fun Night 6:00 p.m.</p>	<p style="text-align: center;">20</p> <p><b>Music LISFA</b> Intermediate Festival</p>
<p style="text-align: center;">21</p> <p><b>Music LISFA</b> Intermediate Festival</p>	<p style="text-align: center;">22</p> <p><b>CSS</b> PTA Circus Begins</p> <p><b>HBD</b> PTA Meeting 7:00 p.m.</p> <p><b>ELS</b> PTA Meeting 7:00 p.m.</p> <p><b>EJB</b> PTA Meeting 7:00 p.m.</p>	<p style="text-align: center;">23</p> <p><b>Board of Education</b> Meeting 7:30 p.m.</p>	<p style="text-align: center;">24</p> <p><b>EJB</b> SBMT Meeting 8:35 a.m.</p> <p><b>CSS</b> PTA Meeting 7:00 p.m.</p>	<p style="text-align: center;">25</p> <p><b>CHS</b> Local Scholarship Informational Meeting 7:00 p.m.</p>	<p style="text-align: center;">26</p> <p><b>Music CHS</b> Jazz Night 6:00 p.m.</p> <p><b>ELS</b> PTA Family Game Night 6:30 p.m.</p> <p><b>SAS</b> PTA Math Night</p> <p><b>IH</b> PTA Talent Show @ OBMS</p>	<p style="text-align: center;">27</p>
<p style="text-align: center;">28</p> <p><b>CHS</b> Senior Trip Departure Date</p>	<p style="text-align: center;">29</p> <p><b>CHS</b> Senior Trip</p> <p><b>SAS</b> PTA Meeting/Pot Luck Dinner 7:00 p.m.</p>	<p style="text-align: center;">30</p> <p><b>CHS</b> Senior Trip Return Date</p>	<p style="text-align: center;">31</p>			<div style="background-color: red; color: white; padding: 10px; text-align: center;"> <p><b>All events are subject to change/ cancellation. Visit the district website <a href="http://www.ccsdli.org">www.ccsdli.org</a> for news &amp; upcoming events.</b></p> </div>

# FEBRUARY 2024

JANUARY 2024						
S	M	T	W	T	F	S
	1	2	3	4	5	6
7	8	9	10	11	12	13
14	15	16	17	18	19	20
21	22	23	24	25	26	27
28	29	30	31			

MARCH 2024						
S	M	T	W	T	F	S
					1	2
3	4	5	6	7	8	9
10	11	12	13	14	15	16
17	18	19	20	21	22	23
24	25	26	27	28	29	30
31						

## SCHOOL ABBREVIATION KEY:

**CHS** - Connetquot High School  
**CO** - Central Office  
**CSS** - Cherokee Street Elementary  
**EJB** - Edward J. Bosti Elementary

**ELS** - Edith L. Slocum Elementary  
**HBD** - Helen B. Duffield Elementary  
**IH** - Idle Hour Elementary  
**JP** - John Pearl Elementary

**OBMS** - Oakdale-Bohemia Middle School  
**RMS** - Ronkonkoma Middle School  
**SAS** - Sycamore Avenue Elementary

Sunday	Monday	Tuesday	Wednesday	Thursday	Friday	Saturday
				1	2	3
<div style="background-color: black; color: white; padding: 10px; border: 1px solid black;">                     Universal Pre-K                      2023-2024 Application                      Packets will be available                      on the district website on                      Feb.1.                 </div>				<p><b>CSS</b> PTA Circus Ends/ Circus Performance 12:30 p.m.</p> <p><b>Music OBMS</b> Musical Production 7:00 p.m.</p>	<p><b>ELEMENTARY HALF DAY/ PARENT-TEACHER CONFERENCES</b></p> <p><b>IH</b> PTA Someone Special Dance 6:00- 7:15 p.m.</p> <p><b>Music OBMS</b> Musical Production 7:00 p.m.</p>	<p><b>Music OBMS</b> Musical Production 1:00 p.m. and 7:00 p.m.</p>
4	5	6	7	8	9	10
	<p><b>OBMS/RMS/CHS</b> Secondary Report Cards Posted</p> <p><b>CHS</b> PTSA Meeting 7:00 p.m.</p>	<p><b>PTA</b> Council Meeting 7:00 p.m.</p>	<p><b>OBMS</b> PTA Book Fair</p> <p><b>RMS</b> PTA Meeting 7:00 p.m.</p>	<p><b>CSS</b> PTA Someone Special Dance 6:00 p.m.</p>	<p><b>SAS</b> Someone Special Night 6:00-8:00 p.m.</p> <p><b>HBD</b> Someone Special Dance (K-2) 6:00-7:00 p.m.</p> <p><b>HBD</b> Someone Special Dance (3-5) 7:15-8:15 p.m.</p> <p><b>RMS</b> UNO Night 6:30-8:30 p.m. P.S. I Love You Day</p> <p><b>EJB</b> PTA Someone Special Dance (Pre-K-2) 5:30-7:00 p.m.</p> <p><b>EJB</b> PTA Someone Special Dance (Gr. 3-5) 7:30-9:00 p.m.</p> <p><b>JP</b> Someone Special Dance 7:00-8:30 p.m.</p>	

<p style="text-align: center; font-size: 24pt;">11</p>	<p style="text-align: center; font-size: 24pt;">12</p> <p>DASA Week</p> <p><b>CHS</b> FF Registration HS Spring Sports</p> <p><b>EJB</b> PTA Meeting 7:00 p.m.</p> <p><b>ELS</b> Hearts of Kindness Week Begins</p>	<p style="text-align: center; font-size: 24pt;">13</p> <p>DASA Week</p> <p><b>RMS</b> Valentine Store</p> <p><b>Board of Education</b> <b>Meeting 7:30 p.m.</b></p>	<p style="text-align: center; font-size: 24pt;">14</p> <p>DASA Week</p> <p><b>RMS</b> Valentine Store</p> <p><b>JP</b> PTA Meeting 7:00 p.m.</p>	<p style="text-align: center; font-size: 24pt;">15</p> <p>DASA Week</p> <p><b>Districtwide</b> SEPTA Meeting @ CO 7:00 p.m.</p> <p><b>IH</b> PTA Meeting 7:00 p.m.</p> <p><b>CHS</b> College Night for Juniors 7:00 p.m.</p>	<p style="text-align: center; font-size: 24pt;">16</p> <p>DASA Week</p> <p><b>ELS</b> Hearts of Kindness Week Ends</p>	<p style="text-align: center; font-size: 24pt;">17</p>
<p style="text-align: center; font-size: 24pt;">18</p>	<p style="text-align: center; font-size: 24pt;">19</p>	<p style="text-align: center; font-size: 24pt;">20</p>	<p style="text-align: center; font-size: 24pt;">21</p>	<p style="text-align: center; font-size: 24pt;">22</p>	<p style="text-align: center; font-size: 24pt;">23</p> <p><b>CHS</b> 3/9 SAT Registration Deadline</p>	<p style="text-align: center; font-size: 24pt;">24</p>
<p><b>Winter Recess – Schools Closed</b></p>						
<p style="text-align: center; font-size: 24pt;">25</p>	<p style="text-align: center; font-size: 24pt;">26</p> <p><b>OBMS/RMS</b> FF Registration MS Spring Sports</p> <p><b>HBD</b> PTA Circus Week</p> <p><b>HBD</b> PTA Meeting 7:00 p.m.</p> <p><b>ELS</b> PTA Meeting 7:00 p.m.</p>	<p style="text-align: center; font-size: 24pt;">27</p> <p><b>CHS</b> 3/9 SAT Late Registration Deadline</p>	<p style="text-align: center; font-size: 24pt;">28</p> <p><b>EJB</b> SBMT Meeting 8:35 a.m.</p> <p><b>SAS</b> PTA Meeting 7:00 p.m.</p>	<p style="text-align: center; font-size: 24pt;">29</p> <p><b>ELS</b> PTA Book Fair</p>	<div style="border: 1px solid black; background-color: red; color: white; padding: 10px; text-align: center;"> <p><b>All events are subject to change/ cancellation. Visit the district website <a href="http://www.ccsdli.org">www.ccsdli.org</a> for news &amp; upcoming events.</b></p> </div>	

# MARCH 2024

FEBRUARY 2024						
S	M	T	W	T	F	S
				1	2	3
4	5	6	7	8	9	10
11	12	13	14	15	16	17
18	19	20	21	22	23	24
25	26	27	28	29		

APRIL 2024						
S	M	T	W	T	F	S
	1	2	3	4	5	6
7	8	9	10	11	12	13
14	15	16	17	18	19	20
21	22	23	24	25	26	27
28	29	30				

## SCHOOL ABBREVIATION KEY:

**CHS** - Connetquot High School  
**CO** - Central Office  
**CSS** - Cherokee Street Elementary  
**EJB** - Edward J. Bosti Elementary

**ELS** - Edith L. Slocum Elementary  
**HBD** - Helen B. Duffield Elementary  
**IH** - Idle Hour Elementary  
**JP** - John Pearl Elementary

**OBMS** - Oakdale-Bohemia Middle School  
**RMS** - Ronkonkoma Middle School  
**SAS** - Sycamore Avenue Elementary

Sunday	Monday	Tuesday	Wednesday	Thursday	Friday	Saturday
					1	2
<div style="background-color: red; color: white; padding: 5px; border: 1px solid black;"> <p>All events are subject to change/ cancellation. Visit the district website <a href="http://www.ccsdli.org">www.ccsdli.org</a> for news &amp; upcoming events.</p> </div>					<p><b>ELS</b> PTA Book Fair</p> <p><b>HBD</b> PTA 5th Grade Circus Performance @ RMS 6:00 p.m.</p>	<p><b>Music</b> SCMEA Rehearsals Div. I, II and III</p>
3	4	5	6	7	8	9
	<p><b>ELS</b> PTA Circus Week Begins</p> <p><b>CHS</b> PTSA Meeting 7:00 p.m.</p>	<p><b>CHS</b> Career Night 6:00 p.m.</p> <p>PTA Council Meeting 7:00 p.m. @ DO</p>	<p><b>CSS</b> PTA Spring Pictures</p> <p><b>EJB</b> PTA Evening Book Fair 6:00- 7:30 p.m.</p> <p><b>JP</b> PTA Meeting 7:00 p.m.</p> <p><b>CSS</b> PTA Meeting/ Reflections Awards 7:00 p.m.</p>	<p><b>CSS</b> PTA Spring Pictures (Class Pictures)</p> <p><b>EJB</b> PTA Book Fair</p>	<p><b>OBMS/RMS MS</b> Half-Day for Parent- Teacher Conferences 11:20 a.m.</p> <p><b>CHS</b> 4/13 ACT Registration Deadline</p> <p><b>Music</b> SCMEA Rehearsals Div. I, II and III</p> <p><b>ELS</b> PTA 5th Grade Circus 6:00 p.m.</p> <p><b>HBD</b> PTA Spring Book Fair</p>	<p>SAT @ <b>CHS</b></p> <p><b>Music</b> SCMEA Rehearsals Div. I, II and III</p>



<p style="text-align: center; font-size: 2em;">10</p>	<p style="text-align: center; font-size: 2em;">11</p> <p><b>SAS</b> PTA PARP Week Begins</p> <p><b>SAS</b> PTA Milk &amp; Cookies Night 6:00-8:00 p.m.</p> <p><b>CHS</b> First Day of Spring Sports</p>	<p style="text-align: center; font-size: 2em;">12</p> <p><b>SAS</b> Kindergarten Registration</p> <p><b>Board of Education Meeting 7:30 p.m.</b></p>	<p style="text-align: center; font-size: 2em;">13</p> <p><b>SAS</b> Kindergarten Registration</p> <p><b>Music CHS</b> Major Musical Daytime Performance for Gr. 5 10:00 a.m.</p> <p><b>OBMS</b> PTA Meeting 7:00 p.m.</p> <p><b>RMS</b> Book Fair</p> <p><b>RMS</b> PTA Meeting 7:00 p.m.</p>	<p style="text-align: center; font-size: 2em;">14</p> <p><b>SAS</b> Kindergarten Registration</p> <p><b>RMS</b> Book Fair</p> <p><b>IH</b> PTA Meeting 7:00 p.m.</p> <p><b>Music CHS</b> Major Musical Production 7:00 p.m.</p>	<p style="text-align: center; font-size: 2em;">15</p> <p><b>OBMS/RMS/CHS</b> Secondary Progress Reports Posted</p> <p><b>Music CHS</b> Major Musical Production 7:00 p.m.</p>	<p style="text-align: center; font-size: 2em;">16</p> <p><b>Music CHS</b> Major Music Production 7:00 p.m.</p>
<p style="text-align: center; font-size: 2em;">17</p>	<p style="text-align: center; font-size: 2em;">18</p> <p><b>HBD</b> PTA Meeting 7:00 p.m.</p> <p><b>ELS</b> PTA Meeting 7:00 p.m.</p> <p><b>EJB</b> PTA Meeting 7:00 p.m.</p>	<p style="text-align: center; font-size: 2em;">19</p> <p><b>CSS</b> PTA Spring Book Fair</p> <p><b>MUSIC RMS</b> Pops Concert @ CHS 7:00 p.m.</p>	<p style="text-align: center; font-size: 2em;">20</p> <p><b>EJB</b> SBMT Meeting 8:35 a.m.</p> <p><b>ELS</b> PTA Spring Picture Day</p> <p><b>IH</b> PTA Book Fair</p> <p><b>IH</b> Science Celebration 5:30-6:30 p.m.</p> <p><b>CSS</b> PTA PARP Night 6:00 p.m.</p> <p><b>CSS</b> PTA Spring Book Fair</p> <p><b>ELS</b> PTA Bedtime Stories Family Night 6:00 p.m.</p> <p><b>Music OBMS</b> Pops Concert @ CHS 7:00 p.m.</p>	<p style="text-align: center; font-size: 2em;">21</p> <p><b>IH</b> PTA Book Fair</p> <p><b>Districtwide SEPTA</b> Meeting @ CO 7:00 p.m.</p>	<p style="text-align: center; font-size: 2em;">22</p> <p><b>ELEMENTARY HALF-DAY/ PARENT-TEACHER CONFERENCES</b></p> <p><b>SAS</b> PTA PARP Week Ends</p> <p><b>CHS</b> 4/13 ACT Late Registration Deadline</p> <p><b>HBD</b> PTA Game Night 6:00 p.m.</p>	<p style="text-align: center; font-size: 2em;">23</p>
<p style="text-align: center; font-size: 2em;">24</p>	<p style="text-align: center; font-size: 2em;">25</p> <p><b>OBMS/RMS</b> MS Spring Sports Begin</p> <p><b>SAS</b> PTA Meeting 7:00 p.m.</p>	<p style="text-align: center; font-size: 2em;">26</p> <p><b>CSS</b> PTA Egg Hunt</p> <p><b>SAS</b> Spring Picture Day</p> <p><b>Music OBMS</b> Pops Concert @ CHS 7:00 p.m.</p> <p><b>Board of Education Meeting 7:30 p.m.</b></p>	<p style="text-align: center; font-size: 2em;">27</p> <p><b>CSS</b> PTA Egg Hunt (Raindate)</p> <p><b>HBD</b> PTA Jelly Bean Caper 2:00 p.m.</p> <p><b>ELS</b> PTA Spring Hunt</p> <p><b>SAS</b> PTA Spring Bunny 6:00-8:00 p.m.</p>	<p style="font-size: 1.5em; font-weight: bold;">Spring Recess – Schools Closed</p>		<p style="text-align: center; font-size: 2em;">29</p>
<p style="text-align: center; font-size: 2em;">31</p>	<p><b>Music RMS</b> Pops Concert @ CHS 7:00 p.m.</p>	<p><b>Board of Education Meeting 7:30 p.m.</b></p>	<p><b>SAS</b> PTA Spring Bunny 6:00-8:00 p.m.</p>			<p style="text-align: center; font-size: 2em;">30</p>

# APRIL 2024

MARCH 2024						
S	M	T	W	T	F	S
						1 2
3	4	5	6	7	8	9
10	11	12	13	14	15	16
17	18	19	20	21	22	23
24	25	26	27	28	29	30
						31

MAY 2024						
S	M	T	W	T	F	S
						1 2 3 4
5	6	7	8	9	10	11
12	13	14	15	16	17	18
19	20	21	22	23	24	25
26	27	28	29	30	31	

## SCHOOL ABBREVIATION KEY:

**CHS** - Connetquot High School  
**CO** - Central Office  
**CSS** - Cherokee Street Elementary  
**EJB** - Edward J. Bosti Elementary

**ELS** - Edith L. Slocum Elementary  
**HBD** - Helen B. Duffield Elementary  
**IH** - Idle Hour Elementary  
**JP** - John Pearl Elementary

**OBMS** - Oakdale-Bohemia Middle School  
**RMS** - Ronkonkoma Middle School  
**SAS** - Sycamore Avenue Elementary

Sunday	Monday	Tuesday	Wednesday	Thursday	Friday	Saturday
	1 <b>Spring Recess – Schools Closed</b>	2 JP PTA Meeting 7:00 p.m.	3 OBMS PTA Meeting 7:00 p.m.  RMS PTA Meeting 7:00 p.m.  Eastern Suffolk BOCES Annual Meeting/Budget Presentation/Meet the Candidates	4 PTA Council Meeting 7:00 p.m. @ CO	5 EJB PTA Craft Night 6:00-8:00 p.m.	6
7	8 Gr. 5 and Gr. 8 ELA Computer-Based Test  CHS PTSA Meeting 7:00 p.m.	9 Gr. 5 and Gr. 8 ELA Computer-Based Test  Board of Education Meeting 7:30 p.m.	10 <b>EID al-Fitr DISTRICT BUILDINGS CLOSED</b>	11 Gr. 3, 4, 6, 7 ELA Paper-Based Test  Music Dress Rehearsal for Showcase of the Arts @ CHS 5:00 p.m.  CSS PTA Family Fun Night 6:00 p.m.	12 Elementary Report Cards Posted  Gr. 3, 4, 6, 7 ELA Paper-Based Test  Showcase of the Arts @ CHS 5:30 p.m.  JP Family Fun Night 6:00-8:00 p.m.  SAS PTA Parent and Me Paint Night 6:00-8:00 p.m.	13 ACT @ CHS

<p>14</p> <p>OBMS/RMS/CHS Secondary Report Cards Posted</p> <p>SAS PTA Spring Boutique</p> <p>ELS PTA Spring Plant Pre-Sale Begins</p> <p>HBD PTA Meeting 7:00 p.m.</p> <p>ELS PTA Meeting 7:00 p.m.</p> <p>EJB PTA Meeting 7:00 p.m.</p>	<p>15</p> <p>SAS PTA Spring Boutique</p> <p><b>Board of Education Meeting (Budget Adoption) 7:30 p.m.</b></p> <p>Eastern Suffolk BOCES Administrative Budget Vote/Board Election</p>	<p>16</p> <p>SAS PTA Spring Boutique</p> <p>CHS Library Literacy Celebration 5:30-7:30 p.m.</p> <p>ELS PTA Talent Show Rehearsal @ RMS 4:40 p.m.</p>	<p>17</p> <p>Music NYSSMA Solo and Ensemble Festival @ CHS 3:00-9:00 p.m.</p> <p>IH PTA Meeting 7:00 p.m.</p> <p>SEPTA Meeting 7:00 p.m. @ CO</p>	<p>18</p> <p>CHS 5/4 SAT Registration Deadline</p> <p>ELS PTA Talent Show @ RMS 6:30 p.m.</p> <p>HBD PTA Paint Night 7:00 p.m.</p>		<p>20</p>
<p>21</p>	<p>22</p> <p>CHS 5/4 Late Registration Dealine</p>	<p>23</p>	<p>24</p>	<p>25</p>	<p>26</p>	<p>27</p>
<p><b>Spring Recess – Schools Closed</b></p>						
<p>28</p> <p>SAS PTA Meeting 7:00 p.m.</p>	<p>29</p> <p>RMS 5th-6th Grade Parent Orientation 7:00 p.m.</p> <p>OBMS 5th-6th Grade Parent Orientation 7:00 p.m.</p>	<p>30</p>				<p style="text-align: center;"> <b>All events are subject to change/ cancellation. Visit the district website <a href="http://www.ccsdli.org">www.ccsdli.org</a> for news &amp; upcoming events.</b> </p>

# MAY 2024

APRIL 2024						
S	M	T	W	T	F	S
	1	2	3	4	5	6
7	8	9	10	11	12	13
14	15	16	17	18	19	20
21	22	23	24	25	26	27
28	29	30				

JUNE 2024						
S	M	T	W	T	F	S
						1
2	3	4	5	6	7	8
9	10	11	12	13	14	15
16	17	18	19	20	21	22
23	24	25	26	27	28	29
30						

## SCHOOL ABBREVIATION KEY:

**CHS** - Connetquot High School  
**CO** - Central Office  
**CSS** - Cherokee Street Elementary  
**EJB** - Edward J. Bosti Elementary

**ELS** - Edith L. Slocum Elementary  
**HBD** - Helen B. Duffield Elementary  
**IH** - Idle Hour Elementary  
**JP** - John Pearl Elementary

**OBMS** - Oakdale-Bohemia Middle School  
**RMS** - Ronkonkoma Middle School  
**SAS** - Sycamore Avenue Elementary

Sunday	Monday	Tuesday	Wednesday	Thursday	Friday	Saturday
			1	2	3	4
<div style="background-color: red; color: white; padding: 10px; border: 1px solid black;"> <p>All events are subject to change/ cancellation. Visit the district website <a href="http://www.ccsdli.org">www.ccsdli.org</a> for news &amp; upcoming events.</p> </div>			<p><b>EJB</b> SBMT Meeting 8:35 a.m.</p> <p><b>Music EJB</b> Advanced Concert @ OBMS 7:00 p.m.</p> <p><b>Music ELS</b> Advanced Concert @ RMS 7:00 p.m.</p>	<p><b>Music HBD</b> Advanced Concert @ RMS 7:00 p.m.</p> <p><b>Music JP</b> Advanced Concert @ OBMS 7:00 p.m.</p> <p><b>Gr. 5 and Gr. 8 Math Computer-Based Test</b></p>	<p><b>OBMS/RMS Half-Day Parent-Teacher Conferences Gr. 5 and Gr. 8 Math Computer-Based Test</b>  <b>IH</b> PTA Spring Picture Day  <b>CHS</b> 6/8 ACT Registration                      Deadline  <b>ELS</b> PTA 12th Annual Basket                      Auction @ RMS  <b>Music NYSSMA</b> Area 1                      All-State  <b>OBMS/RMS</b> 8th Grade Career                      Day 10:00-11:00 a.m.  <b>CHS</b> Spring Comedy                      7:00 p.m.</p>	<p>SAT @ CHS</p> <p><b>Music NYSSMA</b> Area 1 All-State</p> <p><b>CHS</b> Spring Comedy 7:00 p.m.</p>
5	6	7	8	9	10	11
	<p><b>OBMS</b> PTA Mother's Day Plant Sale  <b>CHS</b> Advanced Placement Exams Begin  <b>CSS</b> Teacher Appreciation Week Begins  <b>ELS</b> PTA Staff Appreciation Week Begins  <b>Music CSS</b> Advanced Concert @ RMS 7:00 p.m.  <b>Music IH</b> Spring Concert @ OBMS 7:00 p.m.  <b>CHS</b> PTSA Meeting 7:00 p.m.</p>	<p><b>OBMS</b> PTA Mother's Day Plant Sale</p> <p><b>Gr. 3, 4, 6, 7 Math Paper-Based Test</b></p> <p><b>Music OBMS</b> Spring Concert 1 @ CHS</p>	<p><b>Gr. 3, 4, 6, 7 Math Paper-Based Test</b></p> <p><b>Music CHS</b> Spring Concert 1 7:00 p.m.</p> <p><b>RMS</b> PTA Meeting 7:00 p.m.</p> <p><b>JP</b> PTA Meeting 7:00 p.m.</p>	<p><b>ELS</b> PTA Mother's Day Plant Sale</p> <p><b>CSS</b> PTA Spring Plant Sale</p> <p><b>IH</b> PTA Meeting 7:00 p.m.</p> <p><b>Music CHS</b> Spring Concert 2 7:00 p.m.</p>	<p><b>IH</b> PTA Mother's Day Plant Sale  <b>CSS</b> PTA Spring Plant Sale  <b>ELS</b> PTA Mother's Day Plant Sale  <b>ELS</b> PTA Staff Appreciation Week Ends  <b>HBD</b> PTA Spring Plant Sale  <b>CSS</b> Teacher Appreciation Week Ends  <b>Music CHS</b> Spring Concert 3 (1964 Class Reunion) 7:00 p.m.</p>	

<p style="text-align: center; font-size: 2em;">12</p>	<p style="text-align: center; font-size: 2em;">13</p> <p><b>Music EJB</b> Beginner Concert 6:30 p.m.</p> <p><b>HBD</b> PTA Meeting 7:00 p.m.</p> <p><b>Music SAS</b> Advanced Concert 7:00 p.m.</p> <p><b>Music RMS</b> Spring Concert 1 @ CHS 7:00 p.m.</p>	<p style="text-align: center; font-size: 2em;">14</p> <p><b>Gr. 5 and Gr. 8 Science Computer-Based Test</b></p> <p><b>Board of Education Meeting/Public Hearing of the Annual Meeting 7:30 p.m. @ CO</b></p>	<p style="text-align: center; font-size: 2em;">15</p> <p><b>SAS</b> Field Day</p> <p><b>HBD</b> PTA Long Island Ducks Game</p> <p><b>Music OBMS</b> Spring Concert 2 @ CHS 7:00 p.m.</p> <p><b>Music CSS</b> Beginner Concert 7:00 p.m.</p> <p><b>Music ELS</b> Beginner Concert @ RMS 7:00 p.m.</p>	<p style="text-align: center; font-size: 2em;">16</p> <p><b>IH</b> Field Day</p> <p><b>SAS</b> Kindergarten Orientation 10:00-11:00 a.m.</p> <p><b>EJB</b> Kindergarten Orientation 6:00 p.m.</p> <p><b>Music IH</b> Beginner Concert @ OBMS 7:00 p.m.</p> <p><b>Music RMS</b> Spring Concert 2 @ CHS 7:00 p.m.</p> <p>SEPTA Meeting @ CO 7:00 p.m.</p>	<p style="text-align: center; font-size: 2em;">17</p> <p><b>CHS</b> 6/1 SAT Registration Deadline</p> <p><b>CHS</b> 6/8 ACT Late Registration Dealine</p> <p><b>SAS</b> Field Day (Raindate)</p> <p><b>CSS</b> PTA Color-a-Thon 6:00 p.m.</p> <p><b>HBD</b> Family Fun Night 6:00 p.m.</p>	<p style="text-align: center; font-size: 2em;">18</p> <p><b>CHS</b> Dorney Park Trip</p>
<p style="text-align: center; font-size: 2em;">19</p>	<p style="text-align: center; font-size: 2em;">20</p> <p><b>EJB</b> Kindergarten Screening</p> <p><b>Music JP</b> Beginner Concert 7:00 p.m.</p> <p><b>ELS</b> PTA Meeting 7:00 p.m.</p> <p><b>Music SAS</b> Beginner Concert 7:00 p.m.</p> <p><b>EJB</b> PTA Meeting 7:00 p.m.</p> <p><b>Music HBD</b> Beginner Concert 7:00 p.m.</p>	<p style="text-align: center; font-size: 2em;">21</p> <p><b>Annual Meeting-Budget Vote/School Board Election 8:00 a.m.-9:00 p.m.</b></p> <p><b>EJB</b> Kindergarten Screening</p> <p><b>Music</b> NYSSMA Major Organization Festival @ CHS</p> <p>Elementary Honors Art Show @ CHS 5:00 p.m.</p> <p>Secondary Arts Show @ CHS 6:00 p.m.</p> <p><b>ELS</b> PTA Icee Day</p>	<p style="text-align: center; font-size: 2em;">22</p> <p><b>OBMS/RMS/CHS</b> Secondary Progress Reports Posted</p> <p><b>IH</b> Wellness Day</p> <p><b>CHS</b> Athletics College Recognition Ceremony 8:30 a.m.</p> <p><b>CHS</b> Senior Banquet @ Lands End 6:00 p.m.</p> <p><b>CSS</b> PTA Meeting 7:00 p.m.</p> <p><b>SAS</b> PTA Meeting 7:00 p.m.</p>	<p style="text-align: center; font-size: 2em;">23</p> <p style="text-align: center;"><b>SCHOOLS CLOSED (SNOW DAY MAKEUP)</b></p>	<p style="text-align: center; font-size: 2em;">24</p> <p style="text-align: center;"><b>SCHOOLS CLOSED (SNOW DAY MAKEUP)</b></p>	<p style="text-align: center; font-size: 2em;">25</p>
<p style="text-align: center; font-size: 2em;">26</p>	<p style="text-align: center; font-size: 2em;">27</p> <p style="text-align: center;"><b>Memorial Day</b></p> <p style="text-align: center;"><b>Schools Closed</b></p>	<p style="text-align: center; font-size: 2em;">28</p> <p><b>Board of Education Meeting 7:30 p.m.</b></p>	<p style="text-align: center; font-size: 2em;">29</p> <p>Gr. 5 Coming Together Day @ CHS</p> <p><b>EJB</b> SBMT Meeting 8:35 a.m.</p> <p><b>Music OBMS</b> Jazz Night 6:00 p.m.</p> <p><b>Music RMS</b> Jazz Night 7:00 p.m.</p>	<p style="text-align: center; font-size: 2em;">30</p> <p>Gr. 5 Coming Together Day (Raindate)</p> <p><b>IH</b> Kindergarten Screening in IH Atrium</p> <p><b>Music CHS</b> Jazz Night 7:00 p.m.</p>	<p style="text-align: center; font-size: 2em;">31</p> <p><b>IH</b> Kindergarten Screening in IH Atrium</p> <p><b>EJB</b> Field Day</p> <p><b>HBD</b> PTA Pre-K Story Hour 10:30 a.m.</p> <p><b>CSS</b> Kindergarten Orientation/Bus Ride</p> <p><b>CHS</b> Film Festival 7:00 p.m.</p>	

# JUNE 2024

MAY 2024						
S	M	T	W	T	F	S
			1	2	3	4
5	6	7	8	9	10	11
12	13	14	15	16	17	18
19	20	21	22	23	24	25
26	27	28	29	30	31	

JULY 2024						
S	M	T	W	T	F	S
	1	2	3	4	5	6
7	8	9	10	11	12	13
14	15	16	17	18	19	20
21	22	23	24	25	26	27
28	29	30	31			

## SCHOOL ABBREVIATION KEY:

**CHS** - Connetquot High School  
**CO** - Central Office  
**CSS** - Cherokee Street Elementary  
**EJB** - Edward J. Bosti Elementary

**ELS** - Edith L. Slocum Elementary  
**HBD** - Helen B. Duffield Elementary  
**IH** - Idle Hour Elementary  
**JP** - John Pearl Elementary

**OBMS** - Oakdale-Bohemia Middle School  
**RMS** - Ronkonkoma Middle School  
**SAS** - Sycamore Avenue Elementary

Sunday	Monday	Tuesday	Wednesday	Thursday	Friday	Saturday
<div style="background-color: red; color: white; padding: 10px; text-align: center;">                     All events are subject to change/cancellation. Visit the district website <a href="http://www.ccsdli.org">www.ccsdli.org</a> for news &amp; upcoming events.                 </div>						1 SAT @ CHS
						2
	<b>SAS</b> PTA Book Fair <b>JP Kindergarten Screening</b> <b>HBD</b> Kindergarten Screening <b>ELS</b> Kindergarten Screening <b>CSS</b> Kindergarten Screening <b>IH</b> Kindergarten Screening <b>IH</b> First Grade Play 10:00 a.m. <b>CHS</b> Senior Awards Ceremony 7:00 p.m.	<b>JP</b> Field Day <b>HBD</b> Kindergarten Screening <b>ELS</b> Kindergarten Screening <b>CSS</b> Kindergarten Screening <b>IH</b> PTA Kindergarten Orientation/Bus Ride 10:30-11:15 a.m. <b>IH</b> PTA Kindergarten Orientation/Bus Ride 12:30-1:15 p.m. <b>CHS</b> Algebra I Regents Exam <b>OBMS</b> Awards Night 7:00 p.m. <b>SAS</b> PTA Book Fair	<b>HBD</b> Kindergarten Screening <b>ELS</b> Kindergarten Screening <b>JP</b> Field Day (Raindate) <b>CSS</b> Kindergarten Screening <b>SAS</b> Kindergarten Screening <b>CHS</b> Senior Athletic Award Ceremony 6:00 p.m.	<b>EJB</b> Field Day (Raindate) <b>SAS</b> PTA Book Fair <b>JP</b> Kindergarten Screening <b>ELS</b> PTA Book Fair - BOGO <b>IH</b> Kindergarten Parent Orientation 6:30-7:00 p.m. <b>IH</b> Field Day (Raindate) <b>SAS</b> Kindergarten Screening <b>CSS</b> Field Day <b>CHS</b> Science Symposium @ <b>CHS</b> Cafe 7:00 p.m. SEPTA Meeting @ <b>CO</b> 7:00 p.m. <b>IH</b> PTA Meeting 7:00 p.m.	<b>ELEMENTARY HALF-DAY PARENT-TEACHER CONFERENCES</b> <b>SAS</b> Kindergarten Screening <b>JP</b> Kindergarten Screening <b>ELS</b> PTA Book Fair - BOGO <b>IH</b> Kindergarten Celebration 10:30 a.m. <b>RMS</b> Carnival <b>OBMS</b> 8th Grade Semi-Formal Dance 7:00 p.m.	

<p style="text-align: center; font-size: 2em;">9</p>	<p style="text-align: center; font-size: 2em;">10</p> <p>CSS Field Day (Raindate)</p> <p>IH Gr. 5 Play (K-4) 10:15 a.m.</p> <p>IH Gr. 5 Play (For Gr. 5 Parents) 2:00 p.m.</p> <p>HBD Spirit Week</p> <p>EJB PTA Meeting 7:00 p.m.</p>	<p style="text-align: center; font-size: 2em;">11</p> <p><b>CHS Last Day of Classes</b></p> <p>ELS Kindergarten Bus Ride 4:00 p.m.</p> <p><b>Board of Education Meeting 7:30 p.m.</b></p>	<p style="text-align: center; font-size: 2em;">12</p> <p>EJB SBMT Meeting 8:35 a.m.</p> <p>ELS PTA Field Day</p> <p>IH PTA Barbeque</p> <p>CHS Junior Dance @ Flowerfields 6:00 p.m.</p> <p>CSS PTA Meeting 7:00 p.m.</p> <p>JP PTA Meeting 7:00 p.m.</p>	<p style="text-align: center; font-size: 2em;">13</p> <p>CHS Senior Walk at Elementary Schools</p> <p>ELS PTA Field Day (Raindate)</p> <p>PTA Council Meeting @ DO 7:00 p.m.</p>	<p style="text-align: center; font-size: 2em;">14</p> <p>EJB Flag Day Ceremony 10:00 a.m.</p> <p>ELS Flag Day Ceremony 10:00 a.m.</p> <p>IH Flag Day Ceremony</p> <p>HBD Field Day</p> <p>Regents Exams Begin</p> <p>SAS Gr. 5 Moving-Up Ceremony 9:00-11:30 a.m.</p> <p>IH PTA Ice Cream Social 5:00-6:00 p.m.</p> <p>CSS Celebration of Excellence 6:00 p.m.</p> <p>CSS PTA Movie Night 7:00 p.m.</p>	<p style="text-align: center; font-size: 2em;">15</p>
<p style="text-align: center; font-size: 2em;">16</p>	<p style="text-align: center; font-size: 2em;">17</p> <p>ELS PTA End-of-Year Dinner 7:00 p.m.</p>	<p style="text-align: center; font-size: 2em;">18</p> <p>JP Moving-Up Ceremony 10:00-11:00 p.m.</p> <p>HBD PTA Gr. 5 Social/ Yearbook Signing</p>	<p style="text-align: center; font-size: 2em;">19</p> <p style="text-align: center;"><b>Juneteenth</b></p> <p style="text-align: center;"><b>District Buildings Closed</b></p>	<p style="text-align: center; font-size: 2em;">20</p> <p>HBD Moving-Up Ceremony 9:45 a.m.</p> <p>IH Gr. 5 Moving-Up Ceremony @ OBMS 11:00 a.m.-12:00 p.m.</p>	<p style="text-align: center; font-size: 2em;">21</p> <p>CSS Moving-Up Ceremony 9:00 a.m. @ RMS</p> <p>ELS Gr. 5 Moving-Up Ceremony 9:30 a.m.</p> <p>HBD Field Day (Raindate)</p> <p>EJB CAPS/Pre-K Ceremony 9:30 a.m.; Kindergarten Ceremony 10:45 a.m.</p> <p>EJB Kindergarten Celebration 2:00 p.m.</p> <p>IH PTA Ice Cream Social (Raindate) 5:00-6:00 p.m.</p> <p>RMS 8th Grade Semi-Formal Dance 7:00 p.m.</p> <p>OBMS Moving-Up Ceremony @ CHS 1:15 p.m.</p>	<p style="text-align: center; font-size: 2em;">22</p>
<p style="text-align: center; font-size: 2em;">23</p>	<p style="text-align: center; font-size: 2em;">24</p> <p>Elementary Half Days</p> <p>RMS Moving-Up Ceremony @ CHS 1:15 p.m.</p>	<p style="text-align: center; font-size: 2em;">25</p> <p>Elementary Half Days</p> <p>CHS Graduation Rehearsal 9:00 a.m.</p> <p>EJB Gr. 5 Moving-Up Ceremony 9:30 a.m.</p> <p>CHS Senior Prom @ Villa Lombardi's 7:00 p.m.</p>	<p style="text-align: center; font-size: 2em;">26</p> <p>Last Day of School</p> <p>Elementary Half Days</p> <p>Regents Exams End</p> <p>OBMS/RMS/CHS Secondary Report Cards Posted</p> <p>CHS Graduation Ceremony 6:30 p.m.</p> <p>Elementary Report Cards Distributed</p>	<p style="text-align: center; font-size: 2em;">27</p>	<p style="text-align: center; font-size: 2em;">28</p>	<p style="text-align: center; font-size: 2em;">29</p>
<p style="text-align: center; font-size: 2em;">30</p>						

**CONNETQUOT CENTRAL  
SCHOOL DISTRICT**

780 Ocean Avenue  
Bohemia, NY 11716



For photos and news from  
around our schools,  
please visit our district  
website, [www.ccsdi.org](http://www.ccsdi.org),  
or simply scan the  
QR code.



Like us on  
Facebook

