

Tower Ventures:

**A Presentation for a Mono-pine or “Tree” Cellular Tower at
Collierville High School**

Prepared for:

**Collierville Schools
Mr. Thomas Dougherty , Operations Director
145 West Poplar Ave
Collierville, TN 38017**

Table of Contents

- **Letter of Intent**
- **Tower Site Location Map**
- **Google Earth Map Showing Distance to Main School Building**
- **PCIA RF Fact Sheet**
- **Mono-pine Tower Rendering #1**
- **Mono-pine Tower Rendering #2**
- **Graceland Mono-pine “Tree” Tower**
- **Shelby County Greenline “Tree” Tower**
- **Wolf River Boulevard Monopine “Tree” Tower**
- **FedEx World Headquarters Mono-pine “Tree” Tower**

Letter of Intent



Letter of Intent

April 5th, 2021

Collierville Schools
C/O Collierville School Board
145 West Poplar Ave
Collierville, TN 38017

To the Collierville School Board:

Thank you for allowing Memphis-based Tower Ventures the opportunity to present Collierville Schools a Cellular Tower Lease Proposal. Tower ventures has a long history of Leasing School and government property in the Memphis area and the State.

The proposed Lease would be a new source of revenue for the School District. The School would benefit from the increased quality Cellular Coverage that the proposed Tower would bring. The school itself would have high quality in-building coverage, greatly enhancing E-911 capabilities of the Town of Collierville EMS System.

The surrounding residents, all nearby vehicle traffic and the fans who attend Football Games at Dragon Field, and the Landers Sports Complex would see a pronounced increase in quality coverage. This new coverage would also include faster data speeds and increased Network Capacity.

The type of site that we are proposing would greatly conceal the Tower and the associated ground equipment from view. Tower Ventures is proposing to build a Mono-pine, or "Tree" Style Tower. The associated ground equipment would be enclosed by a 6ft Wooden, "Site-proof" Fence.

The following pages contain the information that will better explain our proposal. Please call or e-mail me if I can assist you or answer any questions.

Thanks again for this opportunity.

Sincerely,

Lou Katzerman
Sr. Site Acquisition & Zoning Manager
Tower Ventures
Cell: 901.239.3892
495 Tennessee Street
Suite # 152
Memphis, TN 38118
lou@towerventures.com

495 Tennessee Street • Suite 152 • Memphis, TN 38103
Toll Free: 1-800-875-5109 • Tel: 901-794-9494

towerventures.com



Conceptual Site Plan
Tower Site Location Map



TOWNSHIP
DEVELOPMENT SERVICES
1115 HALLE PARK • COLLIERVILLE • TN • 38017
901.853.1507 • kraughan@townshipdev.com

November 19, 2020
Proposed Cell Tower



COLLIERVILLE, TENNESSEE

Proposed Mono-pine will be located +/- 1551 from Main School Building



Collerville High School

Approx Tower Location



Google Earth Map Showing Distance to Main School Building

PCIA RF Fact Sheet



Wireless Networks and Your Health: THE FACTS

FACTS

- Wireless devices and facilities must adhere to radio frequency ("RF") emission guidelines established and enforced by the Federal Communications Commission ("FCC").

See FCC, Second Memorandum Opinion and Order and Notice of Proposed Rulemaking, 12 FCC Rcd 13494

- Under federal law, state and local governments may not regulate the placement, construction, and modification of wireless facilities on the basis of environmental effects of RF emissions if the facilities comply with FCC regulations governing RF emissions.

47 U.S.C. § 332(c)(7)(B)(iv)

- RF emissions from wireless facilities generally are significantly lower than permitted. According to recent studies, "RF exposures from base stations range from 0.002% to 2% of the levels of international exposure guidelines."

World Health Organization, Electromagnetic Fields and Public Health, <http://www.who.int/mediacentre/factsheets/fs304/en/>

- There is no credible scientific evidence that RF emissions from wireless base stations and wireless networks have adverse health or environmental effects.

CONCLUSIONS

- The World Health Organization has conducted a review of all available studies and concluded that "there is no convincing scientific evidence that the weak RF signals from base stations and wireless networks cause adverse health effects."

World Health Organization, Electromagnetic Fields and Public Health, <http://www.who.int/mediacentre/factsheets/fs304/en/>

- The U.S. Food and Drug Administration has determined that based on all available evidence, there is "no increased health risk due to radio-frequency (RF) energy."

U.S. Food and Drug Administration, Consumer Updates: No Evidence Linking Cell Phone Use to Risk of Brain Tumors, <http://www.fda.gov/ForConsumers/ConsumerUpdates/ucm212273.htm>

- The National Cancer Institute has concluded that despite the rise in cell phone use, brain cancer rates did not increase between 1987 and 2005.

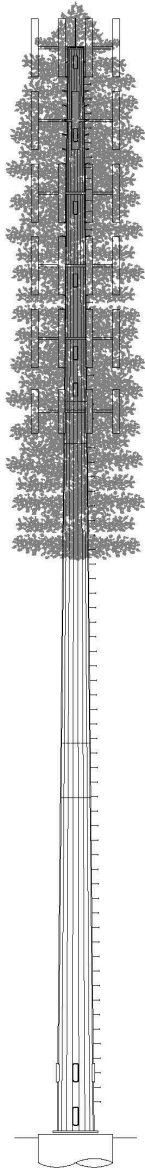
U.S. Food and Drug Administration, Consumer Updates: No Evidence Linking Cell Phone Use to Risk of Brain Tumors, <http://www.fda.gov/ForConsumers/ConsumerUpdates/ucm212273.htm>

- The FCC has concluded that "[t]here is no scientific evidence to date that proves that wireless phone usage can lead to cancer or a variety of other health effects, including headaches, dizziness or memory loss."

FCC, Office of Engineering and Technology, RF Safety FAQs, <http://www.fcc.gov/oet/rfsafety/rf-faqs.html#Q6>

RFQuestions@pcia.com
www.pcia.com

PCIA
The Wireless Infrastructure Association



STEALTH[®]
FIRST IN CONCEALMENT[™]

SAFETY.

INTEGRITY.

TRUST.

EXPERIENCE.

WE ARE STEALTH[®].
THE [®] MAKES THE DIFFERENCE.

3034-A ASHLEY PHOSPHATE RD.

NORTH CHARLESTON, SC 29418

P: (800)-755-0689 / F: (843)-207-0207

WWW.STEALTHCONCEALMENT.COM

FINAL ENGINEERING

TV6-W, LLC
SITE: TN-2681; WISEMAN ROAD
10991 RALEIGH LAGRANGE RD.
EADS, TN 38028
SHELBY COUNTY

STEALTH JOB #: TV14-00657W-05R0

DRAWING INDEX

T1	TITLE SHEET
N1-N2	NOTES & SPECIFICATIONS
S1	ASSEMBLY - ELEVATIONS
S2	DETAILS
S3-S4	FOUNDATIONS



07/31/2014

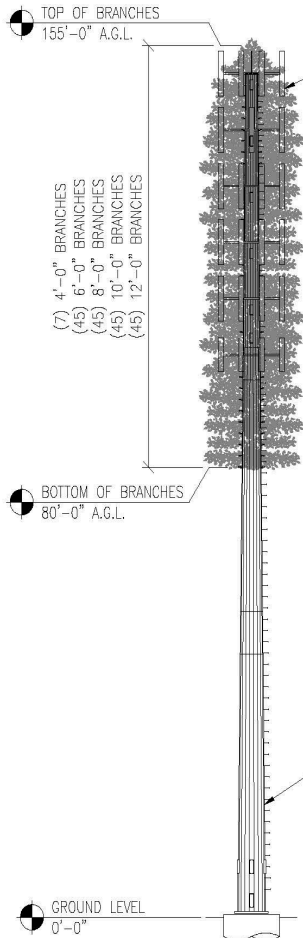
T1	REVISION
7/30/14	0

VECTOR
ENGINEERS
9138 S. STATE STREET, SUITE 101
SANDY, UT 84070
(801) 990-1775 F: (801) 990-1776
VECTOR PROJECT: U0142-372-141

© 2014 STEALTH® Concealment Solutions, Inc. All Rights Reserved

We are STEALTH[®]. The [®] Makes the Difference!

Mono-pine Tower Rendering #1

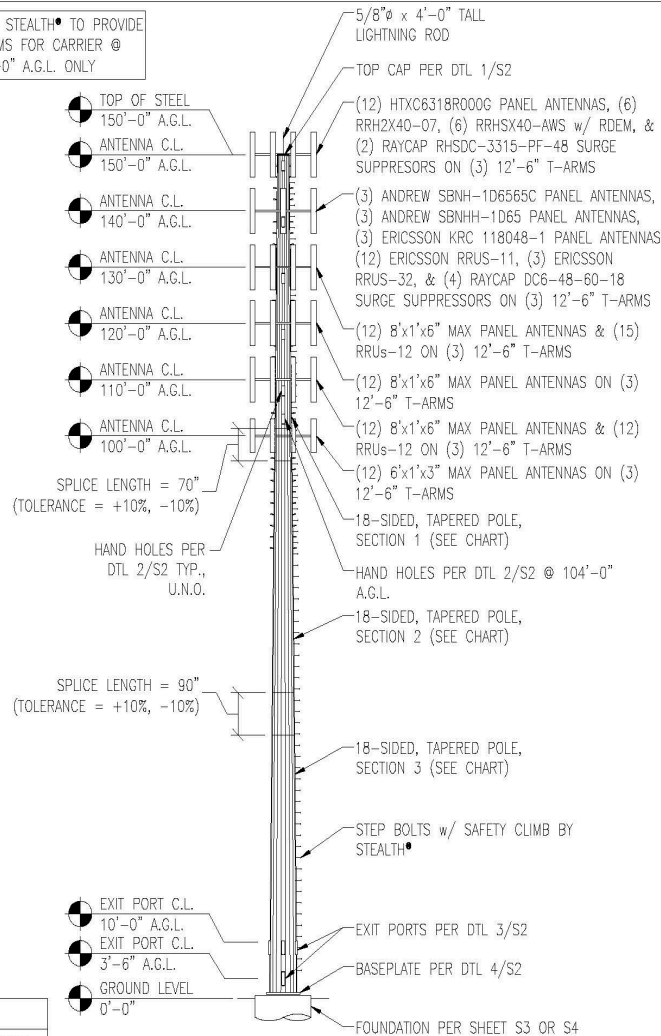


BRANCHES ARE SHOWN FOR ILLUSTRATIVE PURPOSES ONLY AND ARE NOT DRAWN TO SCALE.

MONOPOLE SECTION CHART					
SECTION	LENGTH	TOP Ø	BOTTOM Ø	THICKNESS	WEIGHT
1	54'-6"	28.00"	42.17"	1/4"	5.1 K
2	54'-6"	40.15"	54.32"	7/16"	12.1 K
3	53'-4"	51.50"	65.37"	1/2"	20.2 K *

* INCLUDES BASEPLATE & PORT WEIGHT
TAPER = 0.26 in/ft

NOTE: STEALTH® TO PROVIDE T-ARMS FOR CARRIER @ 150'-0" A.G.L. ONLY



ELEVATION VIEW



STEALTH®
FIRST IN CONCEALMENT™

303-A ASHLEY PHOSPHATE RD.
NORTH CHARLESTON, SC 29418
P: (800)-755-0689 F: (843)-207-0207
WWW.STEALTHCONCEALMENT.COM

PROPRIETARY INFORMATION
THE INFORMATION CONTAINED WITHIN THIS DRAWING SET IS PROPRIETARY & CONFIDENTIAL BY NATURE. ANY USE OR DISCLOSURE OTHER THAN THAT WHICH RELATES TO STEALTH CONCEALMENT SOLUTIONS, INC IS STRICTLY PROHIBITED.



07/31/2014

DRAWING NOT TO SCALE, UNLESS SPECIFIED OTHERWISE DIMENSIONS SHOWN ARE IN INCHES

TOLERANCES
DIMENALS X = 1/16" ANGULAR X = 0.5°
XXX ± 0.01"

ASSEMBLY - ELEVATIONS

TV6-W, LLC
WISEMAN ROAD
10991 RALEIGH LAGRANGE RD.
EADS, TN 38028

JOB #: TVH-00657W-0580
DRAWING: QPC/ISE
DESIGNED: AJM-VSE
REVISED:

S1 REVISION
7/30/14 0

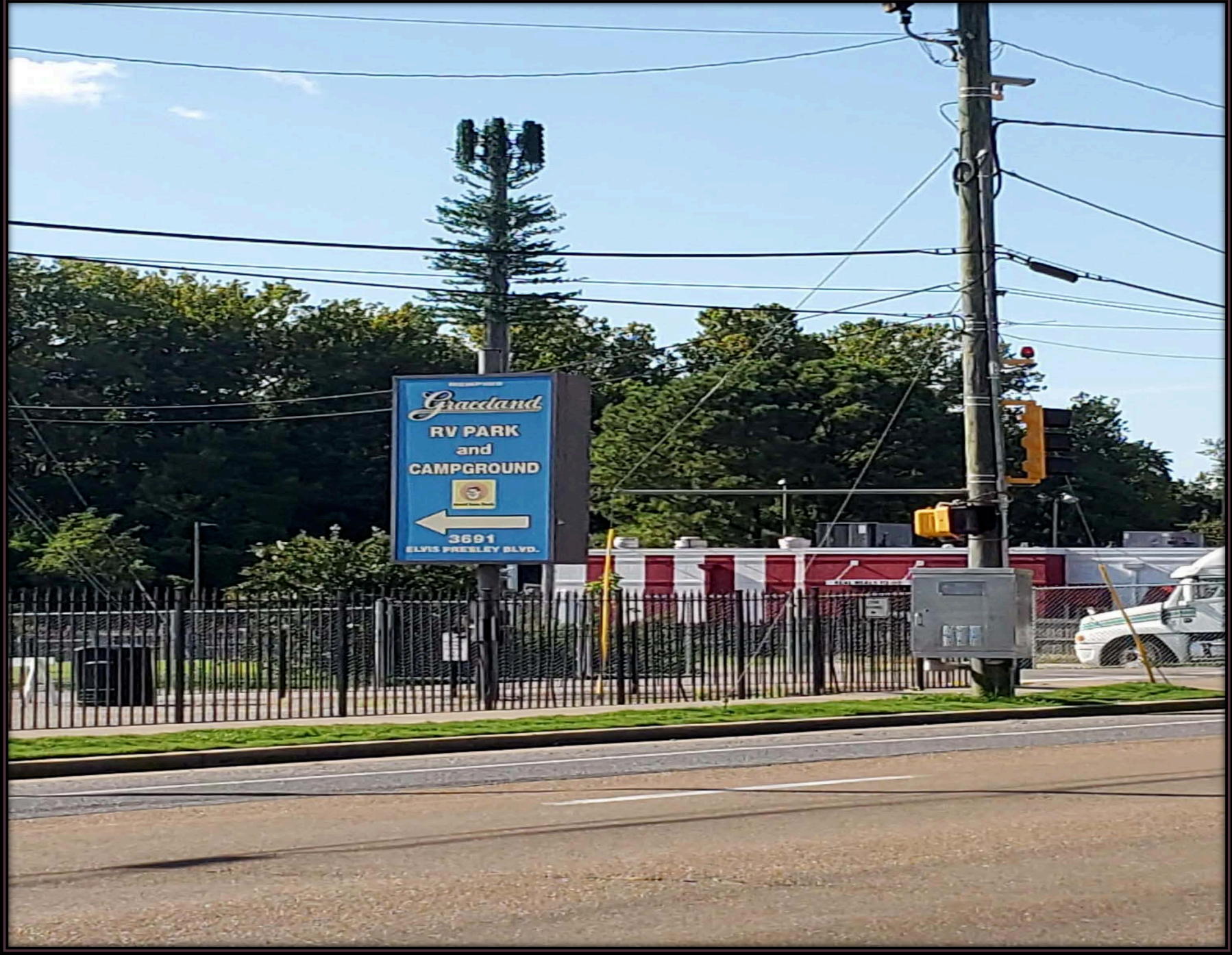
N.T.S. 1

We are STEALTH®. The ® Makes the Difference!

Mono-pine Tower Rendering #2

VECTOR
ENGINEERS
9138 S. STATE STREET, SUITE 101
SANDY, UT 84070
(801) 990-1775 F: (801) 990-1776
VECTOR PROJECT: UG142-372-141

© 2014 STEALTH® Concealment Solutions, Inc. All Rights Reserved



Graceland
Mono-pine
“Tree” Tower

A photograph of a forest scene. In the center, a tall, thin tree trunk rises vertically, partially obscured by the branches and leaves of other trees. The sky is a clear, bright blue. The trees have varying shades of green, suggesting a spring or early summer setting. The overall composition is a low-angle shot looking up into the canopy.

Shelby County
Greenline
“Tree” Tower



Wolf River
Boulevard
Monopine
“Tree” Tower



FedEx World
Headquarters
Mono-pine
“Tree” Tower