

Clovis East Area Boundary Adjustment

Community Forum for ES 35 Boundary Changes

December 6, 2022



ES 35

Welcome

Jennifer Thomas

Assistant Superintendent, Clovis East Area



Introductions

- District Administration
- Clovis East Area Administration
 - Ryan Eisele, Ed.D., Clovis East Principal
 - Kristen Belknap, Ed.D., Clovis East Deputy Principal
 - Sonia Torossian, Clovis East Deputy Principal
 - Demetra Vincent-Walker, Boris Principal
 - Carisa Cordova, Fancher Creek Principal
 - Laurel Graves, Freedom Principal
 - Sara McAvoy, Oraze Principal
 - Melissa Papendorf, Reagan GIS
 - Kelli Hinojos, TK Principal
 - Kacey Gibson, Young Principal
 - Laura Reynolds, Miramonte/ES 35 Principal

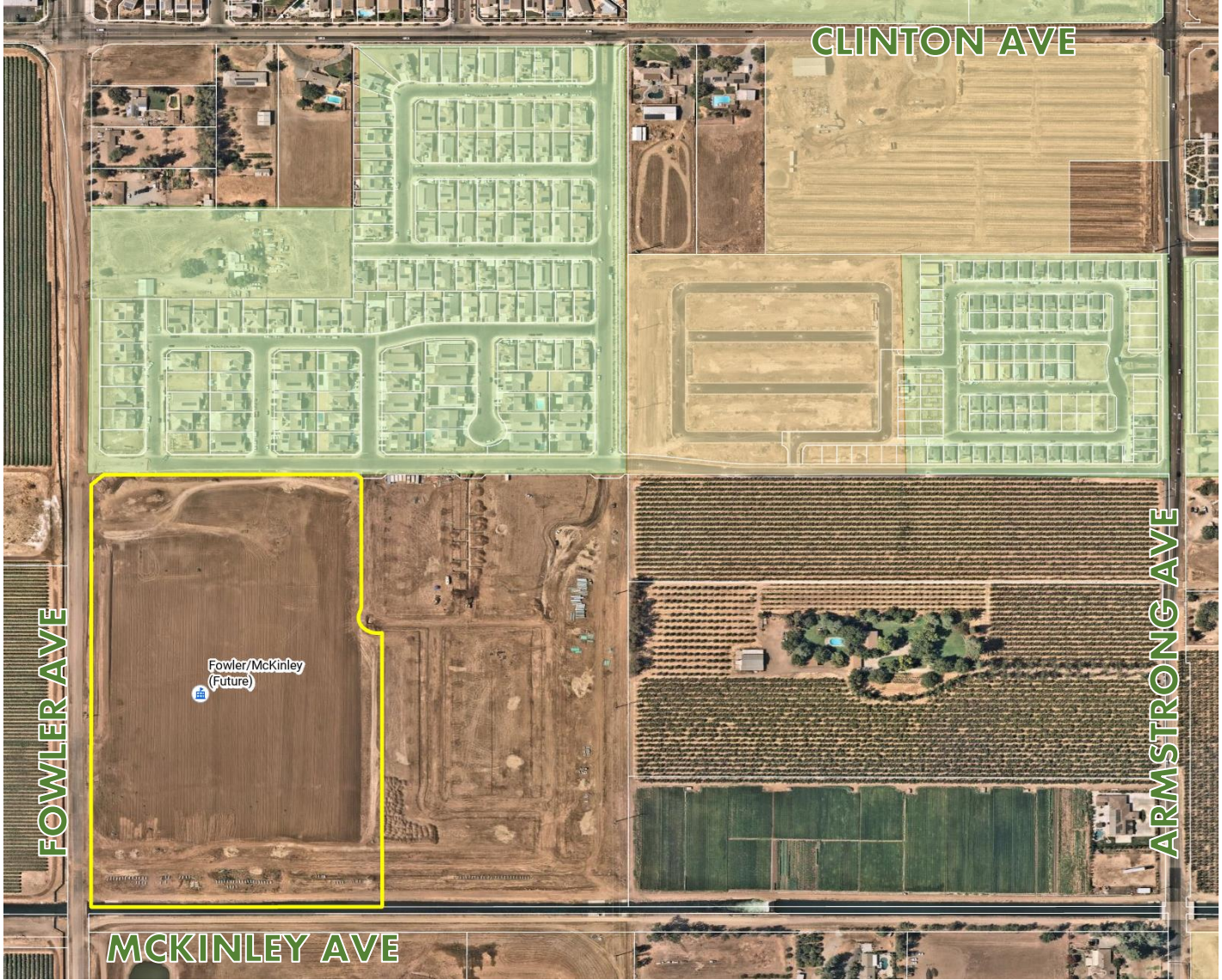
Laura Reynolds, Principal ES 35

- Who is this new principal?
 - 17 years in Clovis Unified; 19 in education
 - 9 years of classroom teaching; 10 years as an administrator
 - Lives and works in this area

What can be expected at ES 35?

- The districts vision of maximizing every student's potential in mind, body, and spirit.
 - Mind: having a growth mindset, celebrating individual academic growth
 - Body: competition starts within each student; each student will learn to love to compete with themselves
 - Spirit: learning about identity, diversity, and inclusion
- Teaching and learning with AVID strategies
 - College and career readiness
 - Writing, Inquiry, Collaboration, Organization, Reading

Fowler/McKinley School Site





darden
architects

www.dardenarchitects.com



Communication With Our Public

- Article(s) for schools to use in their parent updates – Peachjar, InstaConnect
- October “2 Minutes Today” video regarding new school and boundary-setting process
- CUSD Website reviewing process, timeline and initial scenarios with App Push Notification at launch
- CUSD Today articles in November and December reviewing the process and February with final recommendation
- Final recommendation on the CUSD website no later than January 27 before it goes to the Governing Board
- Upcoming Newsletter

Communication

Website

es35.cusd.com

*Newsletter sign-up
coming soon*

FOWLER MCKINLEY ELEMENTARY
Part of the Clovis Unified School District

Translate 

FOWLER MCKINLEY ELEMENTARY



News

Fowler McKinley Elementary

- About Us
- Principal's Message

Questions? Comments?

Still have questions? We invite you to make any comments or ask further questions about the elementary boundary adjustment process through the form below.

2022 Elementary School Boundary Study Feedback

Name

Email *

Overview of Tasks

- Purpose & Parameters
- Rationale for Boundary Adjustment
- Projected Enrollment
- Review the Process
- Timeline
- Draft Scenarios
- Parent / Community Input
- Next Steps



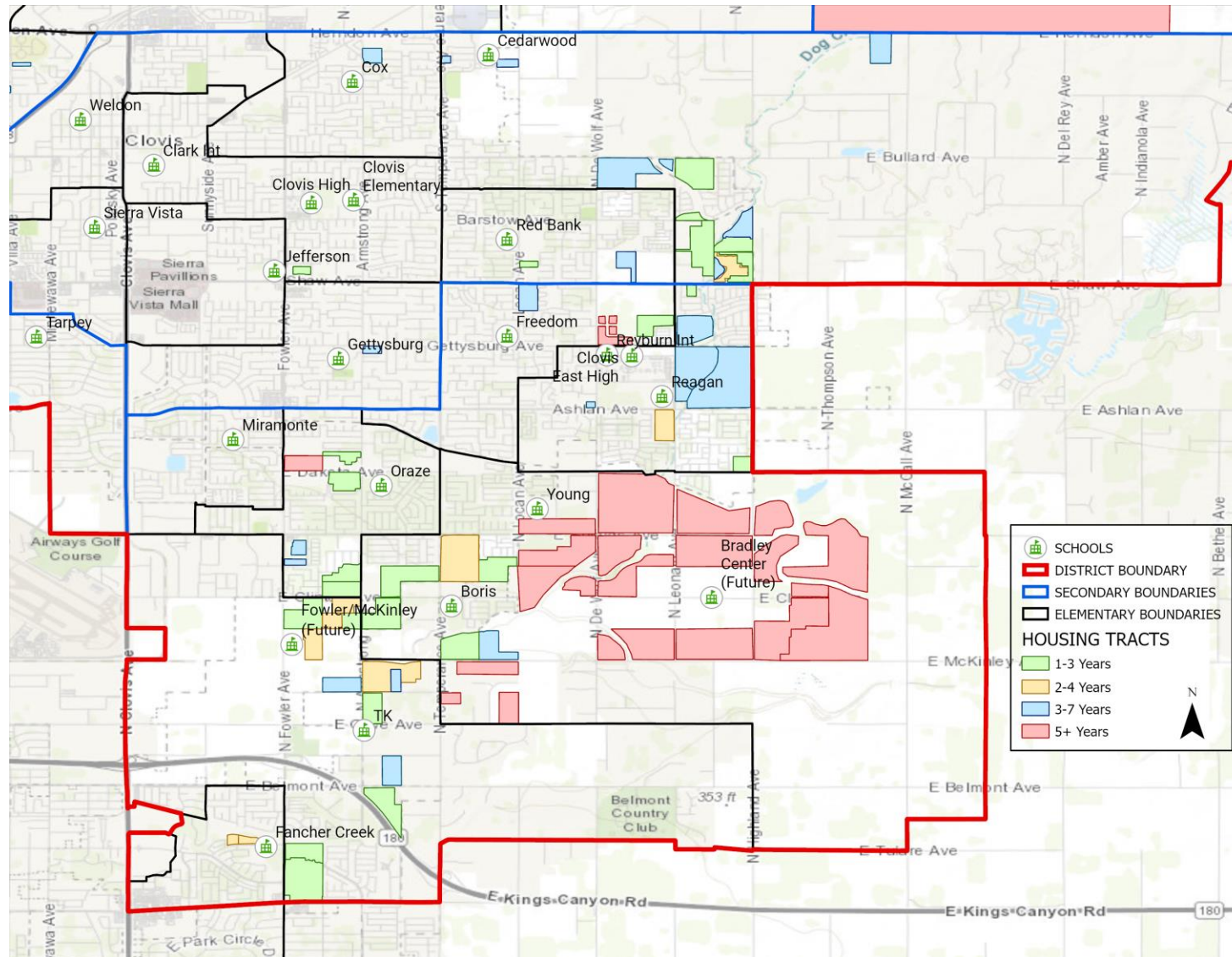
Problem, Purpose & Parameters

- Problem
 - Continued development in the Loma Vista and Southeast Fresno development areas
 - Overcrowding and projected student enrollment growth in the Clovis East area
- Purpose
 - Provide input and perspective on the school boundary adjustment draft scenarios for the new ES 35 located at Fowler and McKinley Avenues
 - Provide boundary recommendation to the Governing Board
- Parameters
 - This boundary will be created within the existing Clovis East high school boundary
 - **No change to secondary boundaries**

Rationale for Boundary Adjustment

- Boris, Orazo, Reagan and T-K elementary schools have substantial growth projected from new development within the next 3 years
- Growth is projected to continue throughout the area for the 10-year projection period
- Existing school sites will exceed their enrollment capacities in the immediate future

Development Area



Clovis East Area Projected Enrollment

School	Capacity	2023-24	2024-25	2025-26	2026-27	2027-28	2028-29	2029-30	2030-31	2031-32	2032-33
Boris	800	808	910	998	1016	1103	1173	1248	1411	1590	1774
Fancher Creek	750	676	670	680	681	684	690	689	687	681	674
Freedom	800	734	756	768	791	818	862	879	892	890	891
Miramonte	750	575	538	522	504	479	447	446	444	440	437
Oraze	800	848	821	813	782	765	740	737	737	727	723
Reagan	800	777	798	847	905	973	1032	1061	1066	1067	1063
TK	750	724	756	818	849	829	820	824	825	822	819
Young	708	641	660	669	669	689	765	825	887	949	1012



Boundary Criteria

- Utilize existing school design capacity whenever possible
- Create long lasting boundaries
- Keep neighborhoods together with contiguous boundaries that minimize gerrymandering and avoid crossing major streets and other barriers
- Consider neighborhood dynamics
- Consider transportation needs
- Consider implications to Title I and other special programs

Boundary Change Process

- **October – February 2023** – Executive Committee for Boundary Adjustment will draft scenarios and review feedback from Steering Committee and Community Forum and make final recommendations to the Clovis USD Governing Board
- **October – November** – District Steering Committee for Boundary Adjustment will provide input on scenarios from various departments (Transportation, SpEd, Principals, etc.)
- **November 7** – Evening Parent Meeting at Clovis East High School to share information
- **December 6** – Community Forum held to gather input on the boundary adjustment at Clovis East MPR
- **February 1** – Final recommendations go to the Governing Board **for information**
- **February 15** – Governing Board **takes action** on the boundary adjustment

Anticipated Timeline

- Steering Committee Meets October – November 2022
- Principal Appointed November 9, 2022
- Initial Scenarios Uploaded December 2, 2022
- **Community Forum** **December 6, 2022**
- Construction Begins Mid February
- Boundary Approval February 1, 2022
- School Name Approval February 1, 2022
- Mascot/Colors Early Spring 2023
- School Opens August 2024

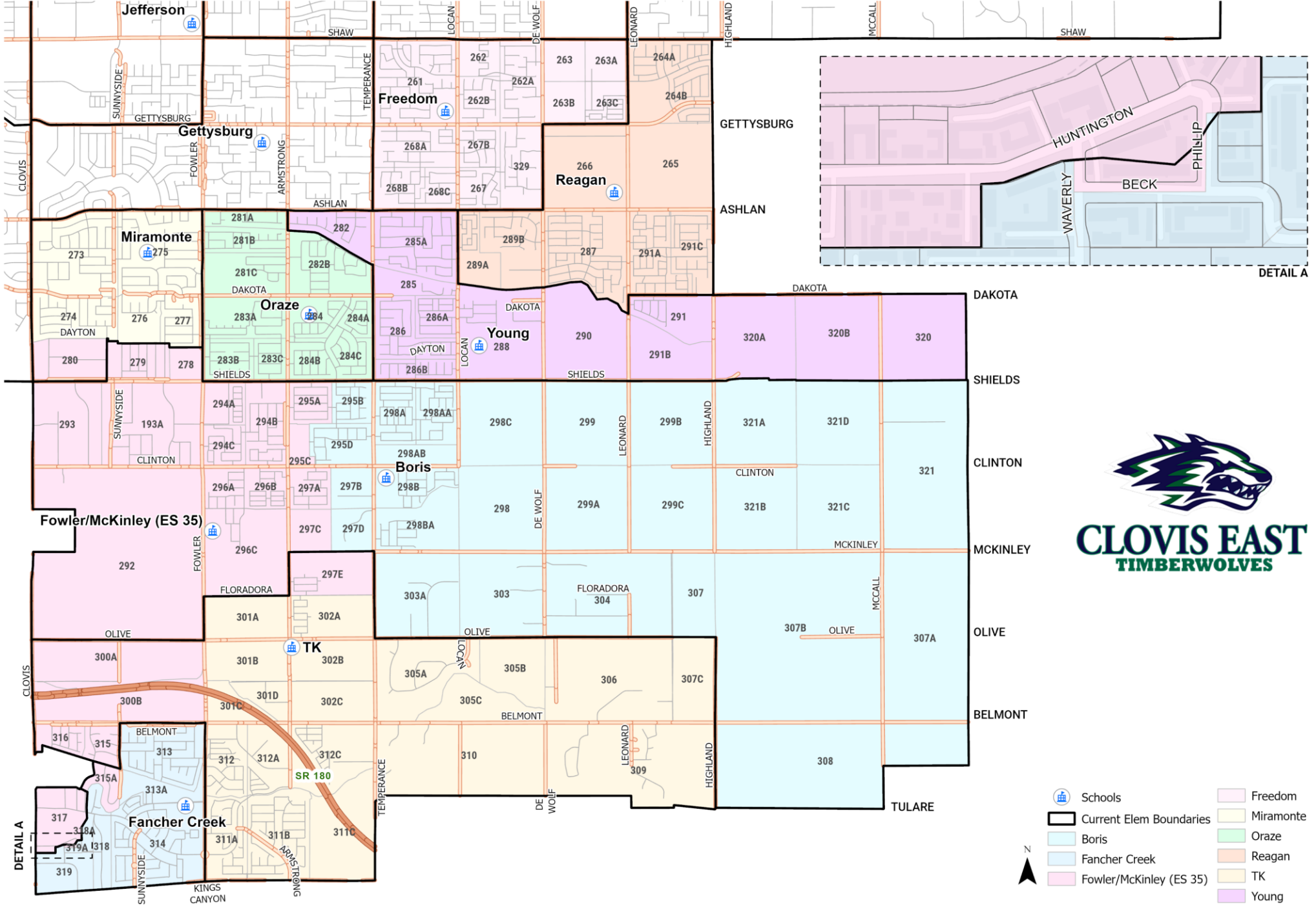


Draft Scenarios Review

- Task
 - With site principal guidance, each school will provide comments for further consideration
 - Positives and concerns of each scenario
 - Blue/Green
 - Report out at the end
 - Question Cards – contact info and question for follow-up contact.



ES 35 Boundary Study
BLUE SCENARIO

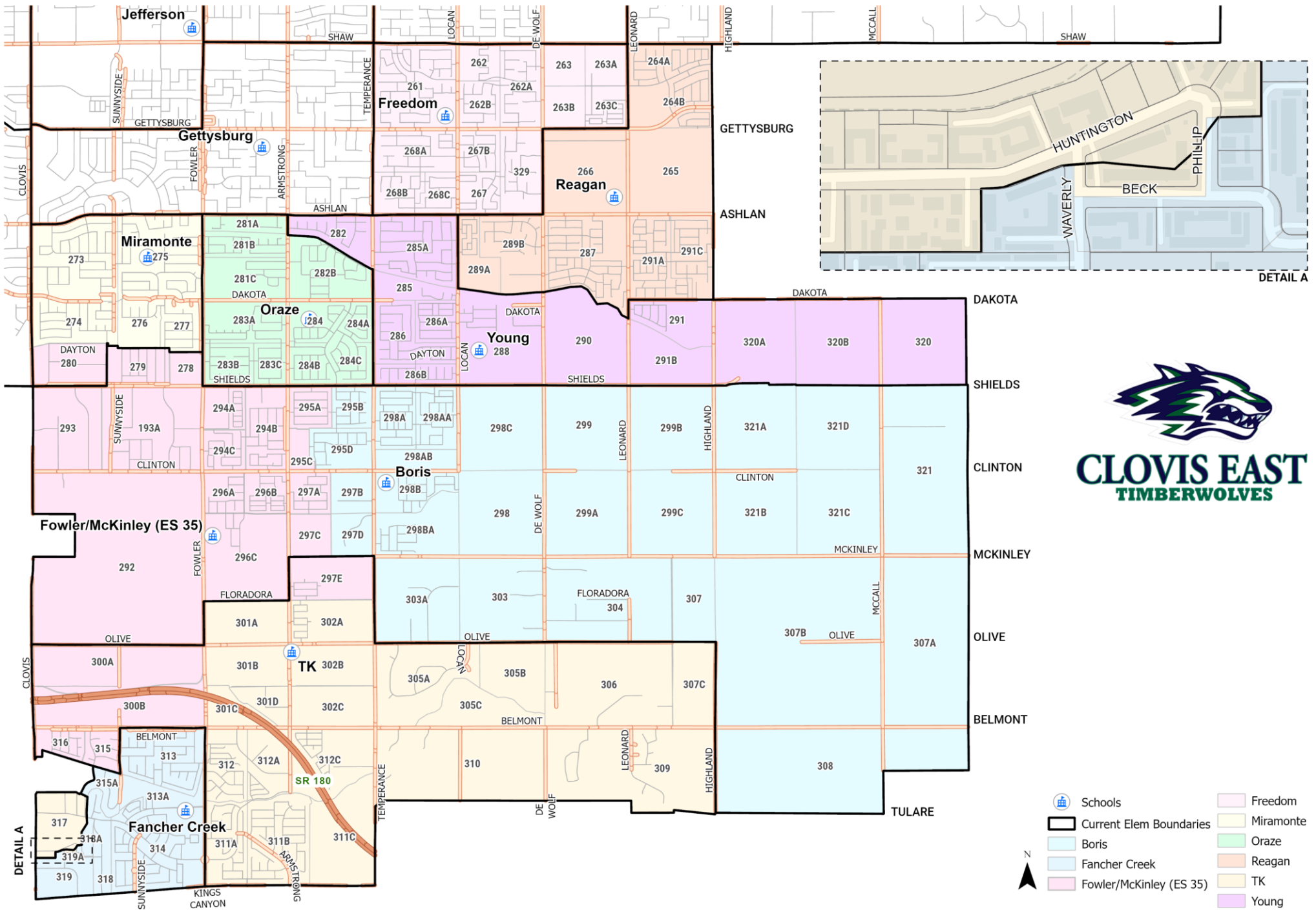


- | | |
|-------------------------|-----------|
| Schools | Freedom |
| Current Elem Boundaries | Miramonte |
| Boris | Oraze |
| Fancher Creek | Reagan |
| Fowler/McKinley (ES 35) | TK |
| | Young |





ES 35 Boundary Study
GREEN SCENARIO



Thank You

- Questions?

