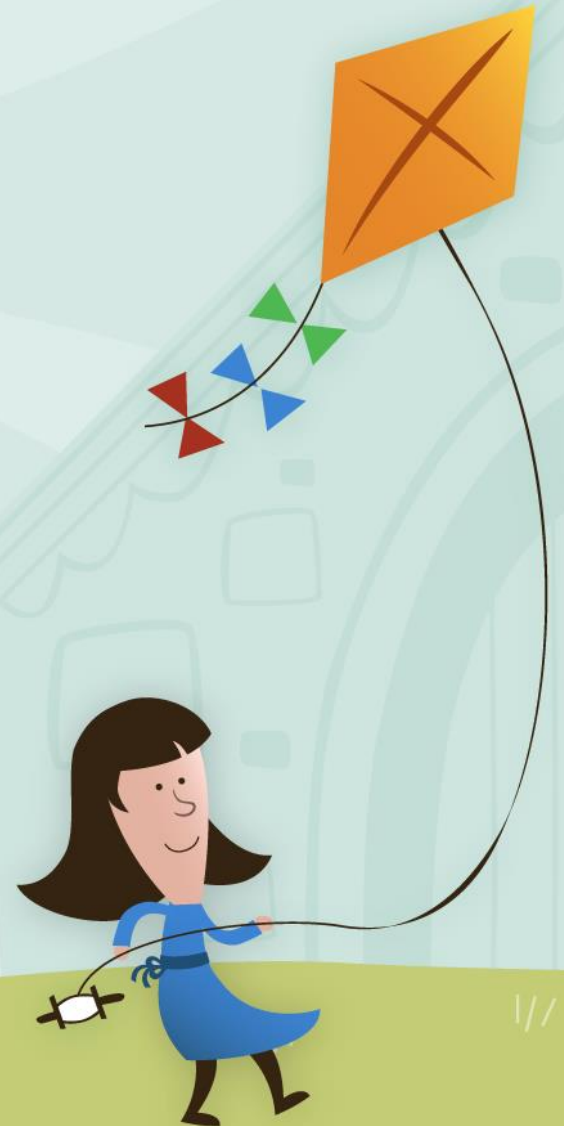


Garfield

1st Quarter SART

October 8, 2020

5:30 pm

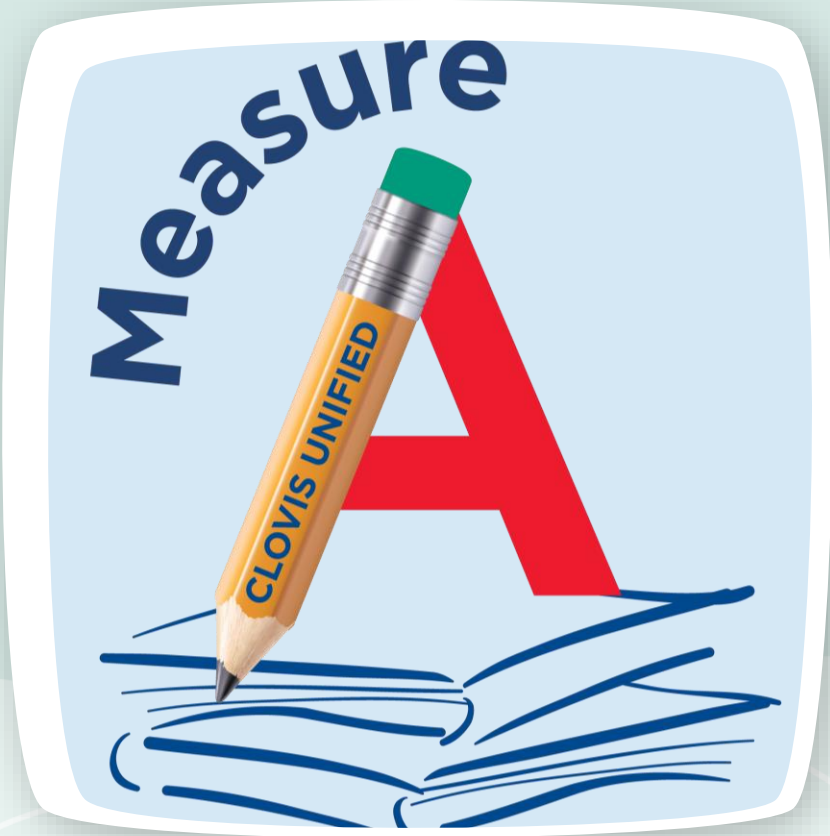


Distance Learning Update



- Teacher Experience
- Student Experience
- Parent Experience
 - Challenges





Measure A Fact:

Every school would receive auto-door
and hospital-grade air filtration upgr



Why a Bond Measure in November?

Clovis Unified faces a unique set of circumstances that prompted a citizen's recommendation for a \$335 million bond measure to be placed on the ballot this November. Because of the way election cycles and tax rates work, November 2020 is the last chance our community has to weigh in on whether or not they want the district to be maintained and kept up-to-date.

MEASURE A GIVES OUR COMMUNITY:



Local Control with No Change to the Tax Rate

Measure A won't increase the current tax rate for residents. Funds raised are locally controlled, create local jobs, and are monitored by local citizens.

Health & Safety at Every School

Measure A would fund improvements in ventilation and campus security.

For the Future

Clovis Unified is facing a capacity emergency. Measure A builds new schools and modernizes and maintains old schools.

Learn More About Measure A at cusd.com/bond2020.
We want to answer any questions you have about Measure A and welcome your call at 559-327-9260.



Without Measure A:

- Boundary Changes or Year-Round School very likely
- Won't have the resources to maintain, repair, and update schools

Measure A:

- Every classroom and building gets bipolar ionization filters
- Every school gets security auto door locks
- Builds new schools and modernizes old schools



Return to School Plan



- Students and staff wash or sanitize their hands upon entering the classroom
- Masks required for all students and staff
- 6 feet social distancing
- Temperatures taken daily before students enter campus
- Contact tracing
- No visitors or volunteers on campus (includes parents and siblings at ASI/BHS)
- Designated, and limited, entry and exit locations on campus



A HEALTHY ROAD BACK TO CAMPUS



Covid conditions in Fresno County and around the nation are improving. With case counts and test positivity rates falling in recent weeks, **our community is nearing the time when a return to campus can safely occur for both students and staff, and plans for what that means for Clovis Unified are underway.**

In the coming weeks, employees and department/site leaders will **work together** to plan for the practical implementation of required health and safety protocols for students and staff returning for on-site hybrid instruction. Together, we will finalize the details of:

- Practical implementation of **new health and safety** protocols
- What **instructional schedules** at the elementary and secondary level look like
- How **transportation and school meals** will be provided
- How students **move about campus**
- And other elements of the school day

Hybrid Instructional Model - Some On-Site/Some Online

Enhanced Sanitation  Hand Sanitizing	Scheduled Handwashing  Face Coverings Required for All Students and Staff	
Maximize Physical Distancing  Health Screening  Contact Tracing Procedures	Use of Every Available Instructional Space 	
Daily Temperature Checks 	No On-Campus Visitors 	Changes in Walking Routes on Campus 

Keep an eye on your email for opportunities to add your voice to the plan. Visit cusd.com/backtoschool2020 for the latest updates.



WHAT CAN I EXPECT...

HOW MY STUDENT WILL LEARN

These are unusual times, but our team of educators are up for the challenge. Clovis Unified is committed now, as always, to providing an excellent education for our students in mind, body and spirit.

When Fresno County guidelines allow for a return to on-campus learning, **parents will be given the choice** for their child to continue school online or participate in a hybrid-model that includes in-person instruction.



ONLINE LEARNING

Synchronous online learning will be adjusted as many teachers will be returning to in-person instruction. Updates will be communicated as plan adjustments are finalized. Flexible online will continue and any updates will be communicated by your home school.

ON-CAMPUS HYBRID LEARNING

Plans are being developed for in-person learning. The details of this learning model - schedules, staggered sessions and times - will be finalized once it is known how many students intend to return to campus.

A return to campus will include:

- Hybrid schedule, with a mix of on-campus instruction and at-home independent work
- Required face coverings and PPE
- Daily temperature checks
- Health screenings
- Social distancing
- Smaller class sizes
- Using every available instructional space
- Enhanced disinfecting of spaces
- Hand sanitizing upon classroom entry
- No on-campus visitors



BENEFITS

- In-person instruction with classroom teacher
- Social emotional benefit of in-person peer and teacher interaction

CONSIDERATIONS

- Might have to change teachers
- Time with teachers is reduced

CLOVIS UNIFIED'S RETURN TO CAMPUS PLAN

FOR MORE INFORMATION ON THIS TOPIC, VISIT:
[CUSD.COM/BACKTOSCHOOL2020](https://www.cusd.com/backtoschool2020), SELECT "INSTRUCTIONAL OPTIONS"



Updated Oct. 1, 2020

As we build our master schedules based on parents return to school option preference, **students may have to change teachers.**

Parents will choose between these three options (ALL Options may require a teacher change)

- Clovis Connect
 - Current On-line Schedule with three instructional blocks required daily
- Flexible On-line
 - Accelerated Education
 - Daily Zoom required
- On-Campus Hybrid Learning
 - Mix of on-campus and at-home independent work
 - Masks required
 - Daily temperature checks
 - Social Distancing
 - No Recess/PE
 - Reduced time with teacher



Proposed Elementary Schedule

	Monday	Tuesday	Wednesday	Thursday	Friday
Check-In	30 Min	30 Min	Zoom Day Whole Class	30 Min	30 Min
AM Track	2.5 Hours	2.5 Hours	90 Min Zoom	2.5 Hours	2.5 Hours
Lunch, Cleaning & Transition / Check-In	1.5 Hours	1.5 Hours	30 Min Break	1.5 Hours	1.5 Hours
			75 Min Zoom		
PM Track	2.5 Hours	2.5 Hours	PLC/Planning	2.5 Hours	2.5 Hours

Hybrid

Advantages

- Engaged in person with teacher
- Social-emotional connection
- Daily contact with teacher
- Wednesday Zoom with whole class keeps tech skills up and allows the whole class to be together



Disadvantages

- More independent work
- Childcare for a half-day model
- With three schedule options, a teacher change may occur to create a master schedule to meet the needs of the school
- Will require masks for all students








- Increased cleaning campus-wide
- Disinfecting between AM/PM Groups
- Deep disinfection nightly
- COVID Response Team will clean room if a student or staff member is sick in a classroom or test positive for COVID



WHAT CAN I EXPECT... CLEANING AND DISINFECTING

SCHEDULED CLEANING ON A TYPICAL SCHOOL DAY

Before School	Mid Morning	After Lunch	Afternoon	After School Ends
				
Disinfecting stations and supplies for classrooms stocked for the day.	Disinfect all high-touch campus surfaces (door handles, countertops, etc.), bathrooms and administrative areas.	Disinfect Multipurpose Rooms and bathrooms.	Disinfect all high-touch campus surfaces (door handles, countertops, etc.), bathrooms and administrative areas.	Deep disinfection of all classrooms, bathrooms and administrative areas. Rooms and surfaces are fogged using electrostatic backpack sprayer.



Schools will be **cleaned four times a day** using a disinfectant approved by the EPA that kills COVID.

- High-use surfaces will be cleaned regularly by custodians, and classrooms and offices will be fogged with a deep disinfectant treatment each evening.
- Teachers will be provided hand sanitizer and disinfectant for their classrooms.
- Anyone entering a classroom will be required to sanitize his or her hands.
- Any shared classroom surfaces that students use will be disinfected by the teacher as needed.
- Bathrooms will be disinfected multiple times a day, and soap and paper towels will be replenished regularly. All students are expected to wash their hands after using the restroom.



COVID RESPONSE TEAM

The district has a special, on-call team trained on disinfecting practices as dictated by CDC should a student/staff member get sick in a classroom or test positive for COVID.

Disinfecting Details

Clovis Unified is using Oxivir, a hydrogen-peroxide-based disinfectant listed by the EPA as a COVID-killing product. It is safe around people and in the EPA's lowest level of hazard. Oxivir will be used at its virucidal concentration on a regular basis. The COVID Response Team would follow CDC safety protection protocols and use it at a higher concentration in **the event of an illness or positive COVID case** in a classroom.

CLOVIS UNIFIED'S RETURN TO CAMPUS PLAN

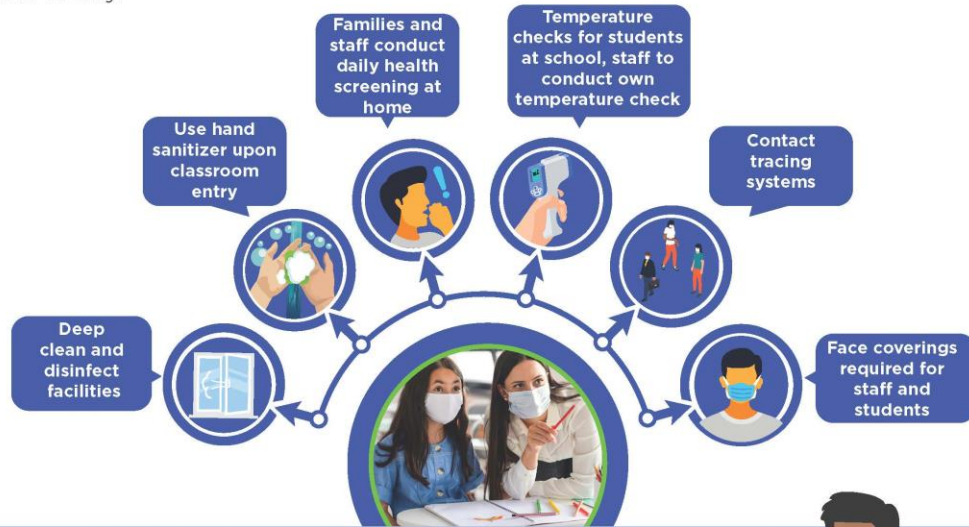
FOR MORE INFORMATION ON THIS TOPIC, VISIT:
[CUSD.COM/BACKTOSCHOOL2020](https://www.cusd.com/backtoschool2020), SELECT "CAMPUS SAFETY"



Updated Oct. 1, 2020

WHAT CAN I EXPECT... HEALTH SCREENINGS

In order to keep students and staff healthy, some things will look a bit different as we layer in extra health, sanitizing and hygiene steps into the school day.



If a child becomes ill on campus:

If a child exhibits COVID-19 symptoms:

- Student will be moved to a sick child room until parent/guardian can pick them up.
- Students in the sick child room will be masked and socially distanced while supervised by nursing staff.
- Staff with appropriate PPE will be available to evaluate and assist students.
- The sick child room will be cleaned and disinfected after symptomatic student leaves.
- Student to remain home for 10 days after showing symptoms AND after they have been fever-free for 24 hours, without the use of fever-reducing medications.
- Student OK to return to school sooner if negative COVID test AND symptoms have resolved for at least one day without the use of medication.
- Students living in the same household with a student presenting with symptoms and/or testing positive for COVID to remain out of school for 14 days and/or until such time as the student with symptoms is confirmed to be COVID negative and symptom free.



CLOVIS UNIFIED'S RETURN TO CAMPUS PLAN

FOR MORE INFORMATION ON THIS TOPIC, VISIT:
[CUSD.COM/BACKTOSCHOOL2020](https://www.cusd.com/backtoschool2020), SELECT "STUDENT AND STAFF HEALTH"



Updated Oct. 1, 2020

- Health Office: Non-COVID needs
- Care Room: Students with COVID Symptoms



- Weather permitting windows will be open
- Masks are required for the driver and all students at all times
- Seats will be assigned based on stop assignments with siblings sitting together
- Social distancing will be provided to the extent possible with many students sitting two to a seat



WHAT CAN I EXPECT... TRANSPORTATION

Safely delivering students to and from school remains the Transportation Team's No. 1 priority.



If possible, **families are encouraged to make their own transportation arrangements** for their students to limit the number of students riding school buses. For those needing to use the district's optional bus service, reducing risk for students and drivers will require:

- Disinfecting bus surfaces and seats between routes
- Windows open, weather permitting
- Drivers wearing PPE equipment
- Passengers using provided hand sanitizer upon entering bus
- All students wearing face coverings
- Bus filled from back to front or as needed by bus stop location
- Social distancing to extent possible

Details and updates: District Transportation Department, 327-9701

REGISTRATION IS REQUIRED

Registration must be completed for all qualified students at <https://maps.cusd.com/transportation>. All students must have a bus pass to board the bus when on-site instruction resumes. Bus passes for registered students will be available for pickup at the CUSD Transportation Office at 1490 Herndon Ave., Clovis.

Please contact the CUSD Transportation Office with any questions from 7 a.m. to 4 p.m. Monday through Friday at 327-9701,

CLOVIS UNIFIED'S RETURN TO CAMPUS PLAN
FOR MORE INFORMATION ON THIS TOPIC, VISIT:
CUSD.COM/BACKTOSCHOOL2020, SELECTING "TRANSPORTATION"



Updated Oct. 1, 2020





COVID-19 Quarantine Guidelines

How does this impact students and staff?



2020-2021 RETURN TO WORK & SAFETY PLAN

COVID-19 & Quarantine Guidelines What happens when a student or staff member becomes sick?

PERSON A	 <p>Any person who has tested positive for COVID-19. Confirmed with lab result.</p>	<p>With symptoms:</p> <p>Isolation until the following requirements have been met:</p> <ul style="list-style-type: none">• 10 days since symptoms first appeared and• 24 hours (1 day) with no fever (without the use of fever-reducing medicine)• Symptoms have improved <p>The 24 hours without fever may possibly occur within the 10 days of isolation, or after the 10 days</p> <p>Without symptoms (Asymptomatic):</p> <p>Quarantine for 10 days from test date:</p> <ul style="list-style-type: none">• Monitor self for symptoms, take temperature twice a day• Released from quarantine after 10 days have passed as long as no symptoms have been present
PERSON B	 <p>Any person who lives in the same household with Person A</p>	<p>No symptoms:</p> <ul style="list-style-type: none">• Quarantine for 14 days following the date of last exposure.• Quarantine while Person A is ill and isolated (this means NO CONTACT with positive household member)• Quarantine an additional 14 days after Person A has recovered and been released, IF unable to avoid exposure to Person A.
PERSON C	 <p>Any person with close contact to Person A (>15 min, <6 ft & unmasked)</p>	<p>Quarantine for 14 days following date of last exposure:</p> <ul style="list-style-type: none">• Contact Fresno County Department of Public Health with any questions 559-600-3200• Monitor self for symptoms, take temperature twice a day• Notify Primary Care Provider if symptoms develop
PERSON D	 <p>Any person who has had exposure to Person B or C</p>	<p>NO QUARANTINE OR ACTION REQUIRED unless:</p> <p>Person B or C develops symptoms OR tests positive and Person D had contact with Person B or C within 14 days then:</p> <ul style="list-style-type: none">• Contact Primary Care Provider to see about testing• Contact Health Services with questions regarding timing and exposure• Clear on daily self-health screening tool

Developed in collaboration with Fresno County Department of Public Health

DEFINITIONS

- Isolation separates infected people with a contagious disease from people who are not sick.
- Quarantine separates and restricts the movement of people who were exposed to a contagious disease to see if they become sick.
- Close Contact defined as anyone who was within 6 feet of an unmasked infected person for at least 15 minutes, starting from 48 hours before the person began feeling sick until the time the person was isolated.

Students & Staff with COVID symptoms must remain home for 10 days after showing symptoms and be fever free for 24 hours or have a negative COVID test and no symptoms for 24 hours before they return to school.

Students or Staff that present COVID symptoms while on campus will be assumed to be COVID positive and will be sent home and must follow these guidelines in order to return to school.



Any person who has tested positive for COVID-19. Confirmed with lab result.

PERSON A

With symptoms:

Isolation until the following requirements have been met:

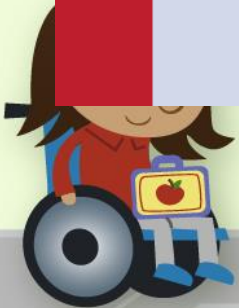
- 10 days since symptoms first appeared and
- 24 hours (1 day) with no fever (without the use of fever-reducing medicine)
- Symptoms have improved

The 24 hours without fever may possibly occur within the 10 days of isolation, or after the 10 days

Without symptoms (Asymptomatic):

Quarantine for 10 days from test date:

- Monitor self for symptoms, take temperature twice a day
- Released from quarantine after 10 days have passed as long as no symptoms have been present



Students or staff living in the same household with a student or family member with symptoms or a positive COVID test must remain out of school for at least 14 days from the last exposure or has a negative COVID test and is symptom free.

Students or staff unable to isolate from a family member with symptoms or a positive COVID test will not be able to return to school for an additional 14 days after the last date of exposure to the original family member.

PERSON B



Any person who lives in the same household with Person A

No symptoms:

- Quarantine for 14 days following the date of last exposure.
- Quarantine while Person A is ill and isolated (this means NO CONTACT with positive household member)
- Quarantine an additional 14 days after Person A has recovered and been released, IF unable to avoid exposure to Person A.



Students or staff that had contact with “Person A” that lasted longer than 15 minutes during which they were unmasked and closer than six feet would need to self quarantine for 14 days from the last day of exposure before returning to school.

PERSON C



Any person with close contact to Person A (>15 min, <6 ft & unmasked)

Quarantine for 14 days following date of last exposure:

- Contact Fresno County Department of Public Health with any questions 559-600-3200
- Monitor self for symptoms, take temperature twice a day
- Notify Primary Care Provider if symptoms develop



If a student or staff member is sent home from school with COVID symptoms, the remaining students in that class will not have to quarantine as long as they were wearing their masks and were six feet apart in the classroom.

This is one of the main reasons that masks are required for all individuals on campus and classroom seating is set up for six feet of distance between students.



Important Dates



October 9-16

Elementary Parent Instructional Model
Choice Survey

October 12 (12-1pm)

Parent Health & Safety Townhall with
Department of Public Health

October 14

If Fresno County remains in Tier 2
(Red) the earliest schools could re-
open without a waiver

October 21

Board Meeting



Parent Survey Questions

1. Which model of instruction would you like to select for your student(s)?
2. What is your preferred start date for the new model of instruction?
3. If you could keep your current teacher by picking a specific model, would you pick that model over a different model?



Thank you for attending our
SART Meeting

