

# Local Control And Accountability Plan Educational Partner Meeting

May 9, 2023

**Welcome & Program Business**  
**Randy Dhindsa and Jennifer Tully**

- Review and Approval of PAC March Minutes

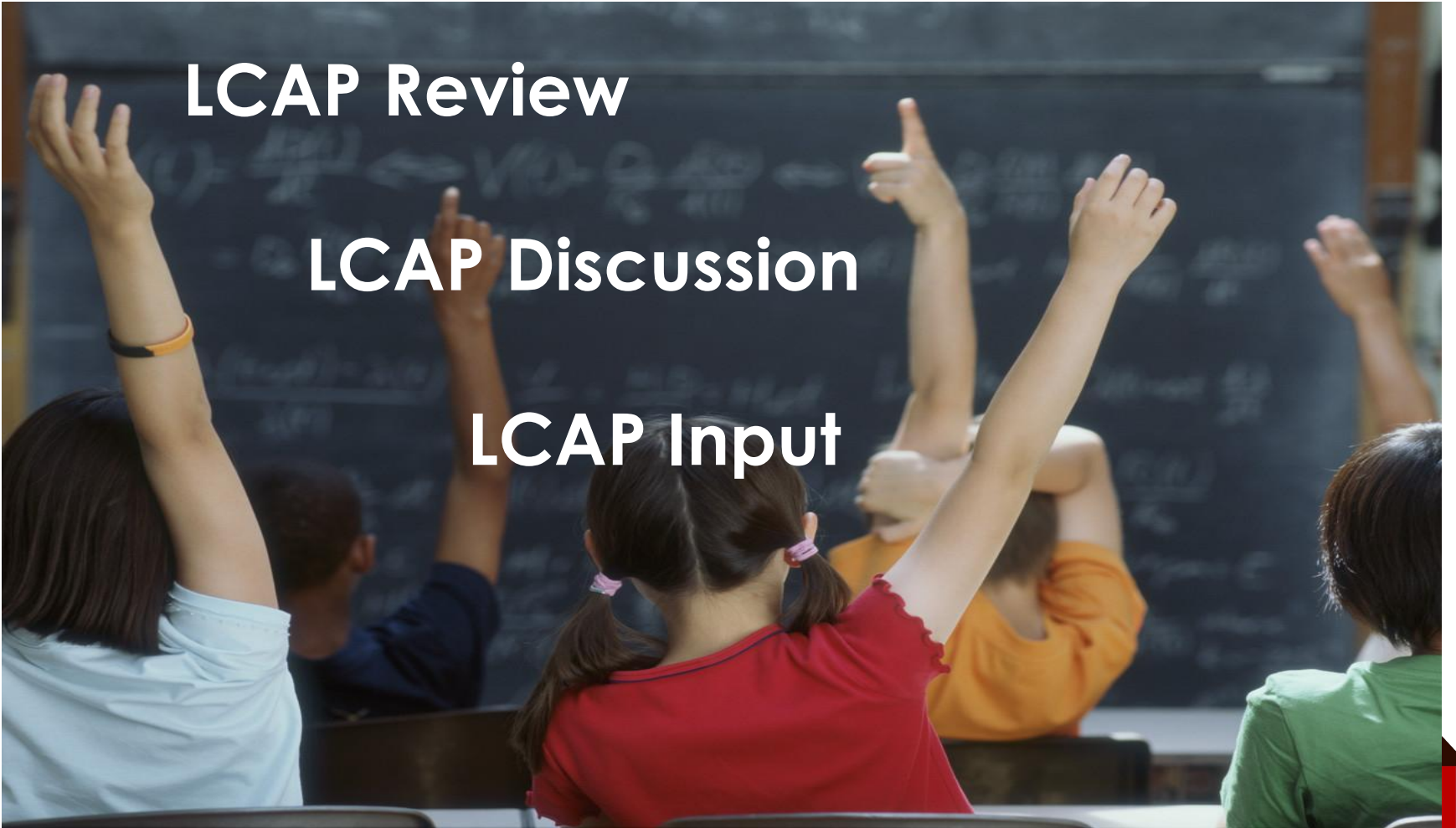
**Local Control Accountability Plan (LCAP)  
Annual Update  
Dr. Pa Vue**



**LCAP Review**

**LCAP Discussion**

**LCAP Input**



# **Public Comment Period**

**April 28, 2023 – May 24, 2023**

# LCAP

- Local Control Accountability Plan
- Local Control Funding Formula
- 2022-2023 LCAP Goals and Actions/Services
- Successes/Areas of Need
- Educational Partners' Feedback
- New and Revised Actions/Services
- Next Steps

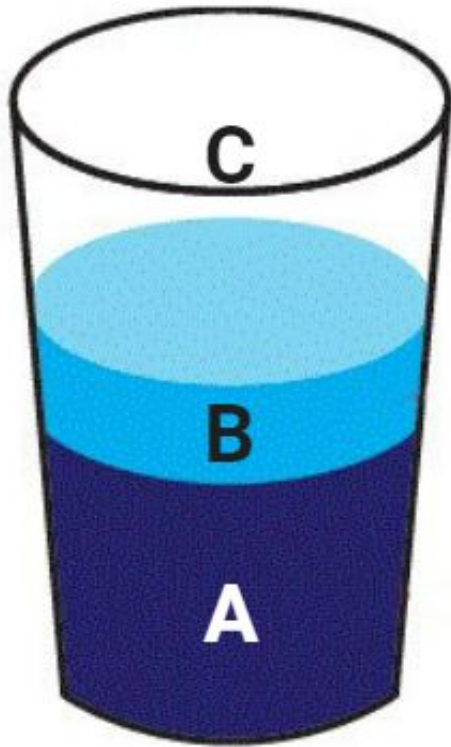


# Local Control Accountability Plan (LCAP)

- The LCAP is a three-year plan that was first adopted in June 2014.
- English Learners (EL), Foster Youth (FY), and Low-Income (LI) students.
- It is updated annually and modified based on the evaluation of student performance and educational partner feedback. Educational partners include pupils, parents/guardians, community members, and personnel.
- Each year, the Governing Board takes action on the updated LCAP at its June meeting







### Concentration Grant



Additional Funds given to any school district whose percent of qualifying students English Learner (EL), Foster Youth (FY), and Low-Income (LI) students exceeds 55%.

\$0

### Supplemental Grant



Based on the district's number of unduplicated English Learner (EL), Low-Income (LI), and Foster Youth (FY) students.

\$42,804,252

### Uniform Base Amount



Equal amount provided to every district based on the average daily attendance rate and is intended to fund all general operating expenses.

\$447,075,593

# Local Control Funding Formula (LCFF)

# 2022-2023 LCAP ACTIONS/SERVICES



- GOAL 1: MAXIMIZE ACHIEVEMENT FOR ALL STUDENT  
\*31 actions/services
- GOAL 2: OPERATING WITH INCREASING EFFICIENCY AND EFFECTIVENESS  
\*14 actions/services
- GOAL 3: HIRE, DEVELOP, SUSTAIN, AND VALUE A HIGH-QUALITY DIVERSE WORKFORCE  
\*2 actions/services

# Successes

- All focus groups (EL, FY, and SED) grew on one or more academic indicators
- 60.3% of our EL students are making great progress toward English language proficiency. Our students performed 10% above the state average of 50.3%.
- In the area of ELA our students scored a “high, two bars above the state average of a low.
- We continue to maintain a “very high” graduation rating, two bars above the state average of medium.
- 2 of our middle schools were Designated National Schools to Watch
- 2 of our schools were named National Blue Ribbon Schools
- 28 of our schools received the Pivotal Practice Award
- 11 of our schools received the Bonner Character Award
- 18 of our schools received the California PBIS Coalition Award
- 8 of our schools received the Civic Learning Merit Award
- 2 of our employees were Fresno County Educator of the Year Recipients
- In the area of Athletics, we received 2 state athletic team titles, 11 state individual champions, 21 valley titles, 24 league titles, and 6 consecutive state wrestling championship titles for Buchanan High School
- We received 12 Band of America member selections for the New Year’s Day 2022 Rose Parade to band students from across the district
- Increase in student and parent overall safety satisfaction
- EL, SED increase in student overall connectedness
- FY remained the same in student overall connectedness
- Increase in parent overall connectedness/involvement

# Areas of Need

- Improvement for EL, FY, and SED on academic progress indicators
- Improvement for EL, FY, and SED in chronic absenteeism
- Improvement for EL, FY, and SED in CTE pathway completion & A-G completion rates
- Improvement for FY on graduation rate and suspension rate

# EDUCATIONAL PARTNERS' FEEDBACK

PARENTS/GUARDIANS • PERSONNEL • PUPILS • COMMUNITY MEMBERS

## Feedback Themes



Social-Emotional Support



Class Size Reduction



Academic Support



Student Engagement

# New and Revised Actions/Services 2023-2024 LCAP



## NEW ACTION

Elementary Counselors to support social-emotional needs



## REVISED ACTION

Addition of a Visual and Performing Arts (VAPA) Coordinator, support staff, and a Teacher on Special Assignment



## INCREASE IN PROPOSED EXPENDITURES

Behavior Consultation Team

# Next Steps

4/28/23 -  
5/24/23

LCAP Public Comment Period

5/9/23

LCAP Parent Meetings (PAC, DELAC, FY)

5/10/23

Governing Board schedules an LCAP Public Hearing April 28, 2023 - May 24, 2023

5/24/23

LCAP Public Hearing; LCAP Public Comment Period ends

5/25/23 -  
6/7/23

LCAP is finalized

6/14/23

Governing Board receives recommendations for LCAP adoption

7/1/23

LCAP due to Fresno County Office of Education

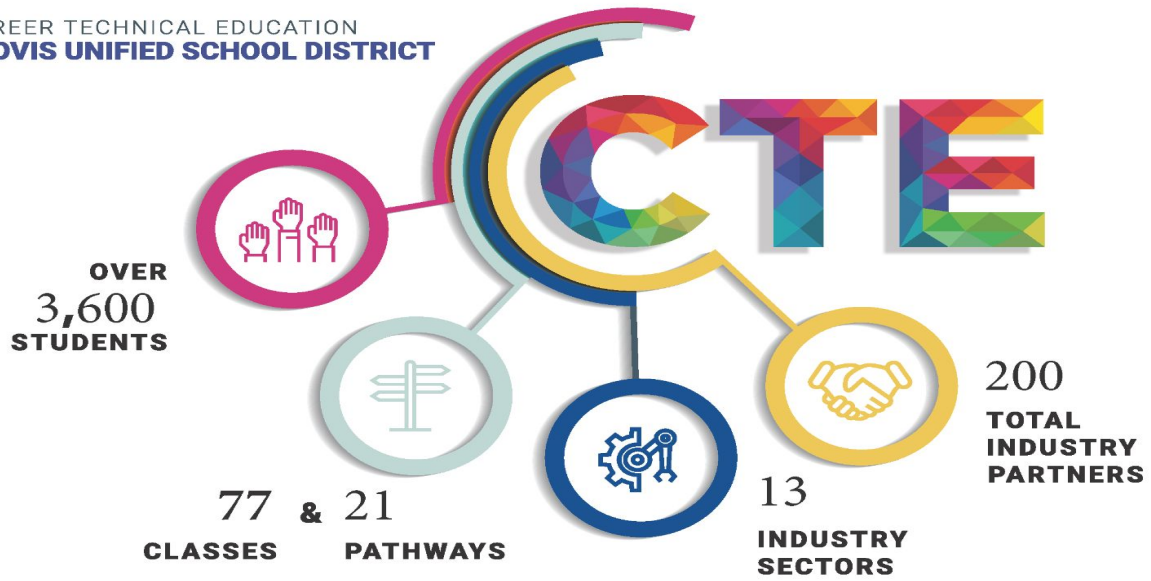
# Questions



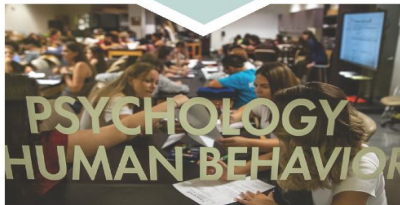
# **Career Technical Education (CTE)**

## **Update**

**Dr. Gregory Lomack**



**IMPROVES SUCCESS IN COLLEGE**



- 92% of CTE concentrators in CA are more likely to attend college or a post-secondary program
- 600,000 high school students enroll in dual credit CTE courses to earn college credit
- More likely to stay in college

**50 COURSES MEET UC & CSU A-G REQUIREMENTS**

**IMPROVES SUCCESS IN WORK & LIFE**



- 95% of CTE students who did not go to college worked for pay within two years of graduation
- Provides skills in critical thinking, communication, team work, citizenship, integrity and ethical leadership, research tools, creativity and innovation

**23 DUAL ENROLLMENT COURSES**

**ASSOCIATION FOR CAREER & TECHNICAL EDUCATION**



- 726,000 open jobs in trade, transportation, manufacturing and utilities
- 3/5 of the fastest growing occupations are in health care
- 30% of all job openings by 2020 will require some college or a two-year associate degree

**148 SECTIONS**

CTE TREND DATA

	2023-2024	2022-2023	2021-2022	2020-2021	2019-2020	2018-2019
Enrollment	3,935/12,741 30.8% of total HS enrollment (projected)	3,675/12,060 30.4% of total HS enrollment	3,244/13,512 24.0%	3,823/13,197 28.9%	3,934/13,213 29.7%	3,501/13,075 26.7%
Industry Partners		200	207	168	337	277
Dual Enrollment		23	13	15	15	15
Certifications		58	58	54	58	62
Community Classroom Participation		90 projected	95	78	125	84

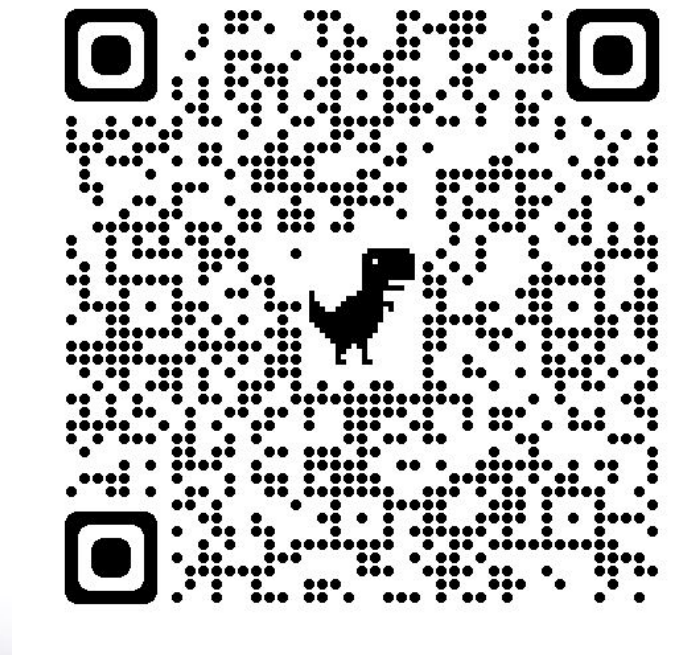
# **Committee Recognition**

**Robyn Snyder**

# **Public Comments**

**Randy Dhindsa and Jennifer Tully**

# Meeting Evaluation



**Thank you for your service and  
participation this year!**

