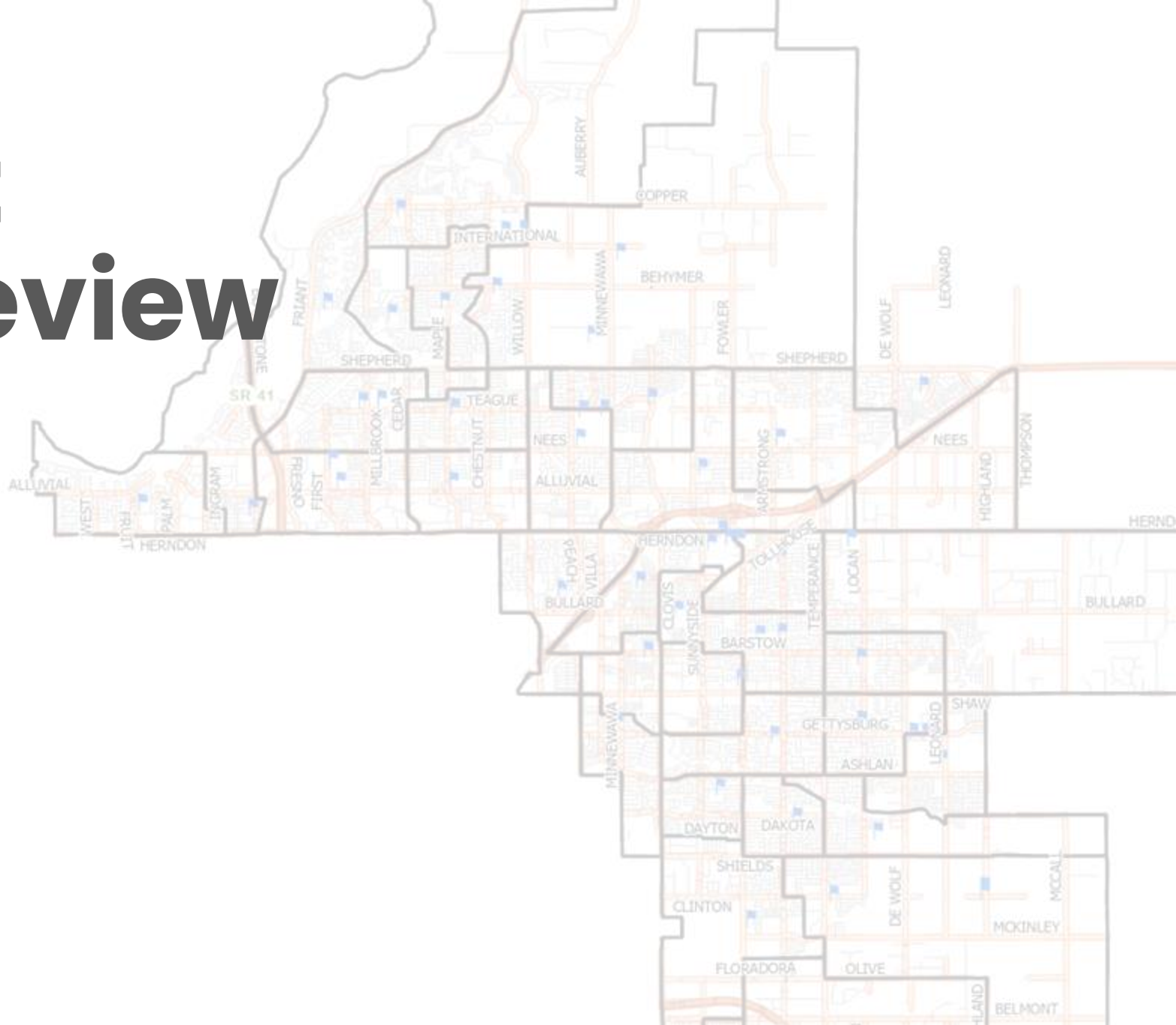


2024 District Boundary Review

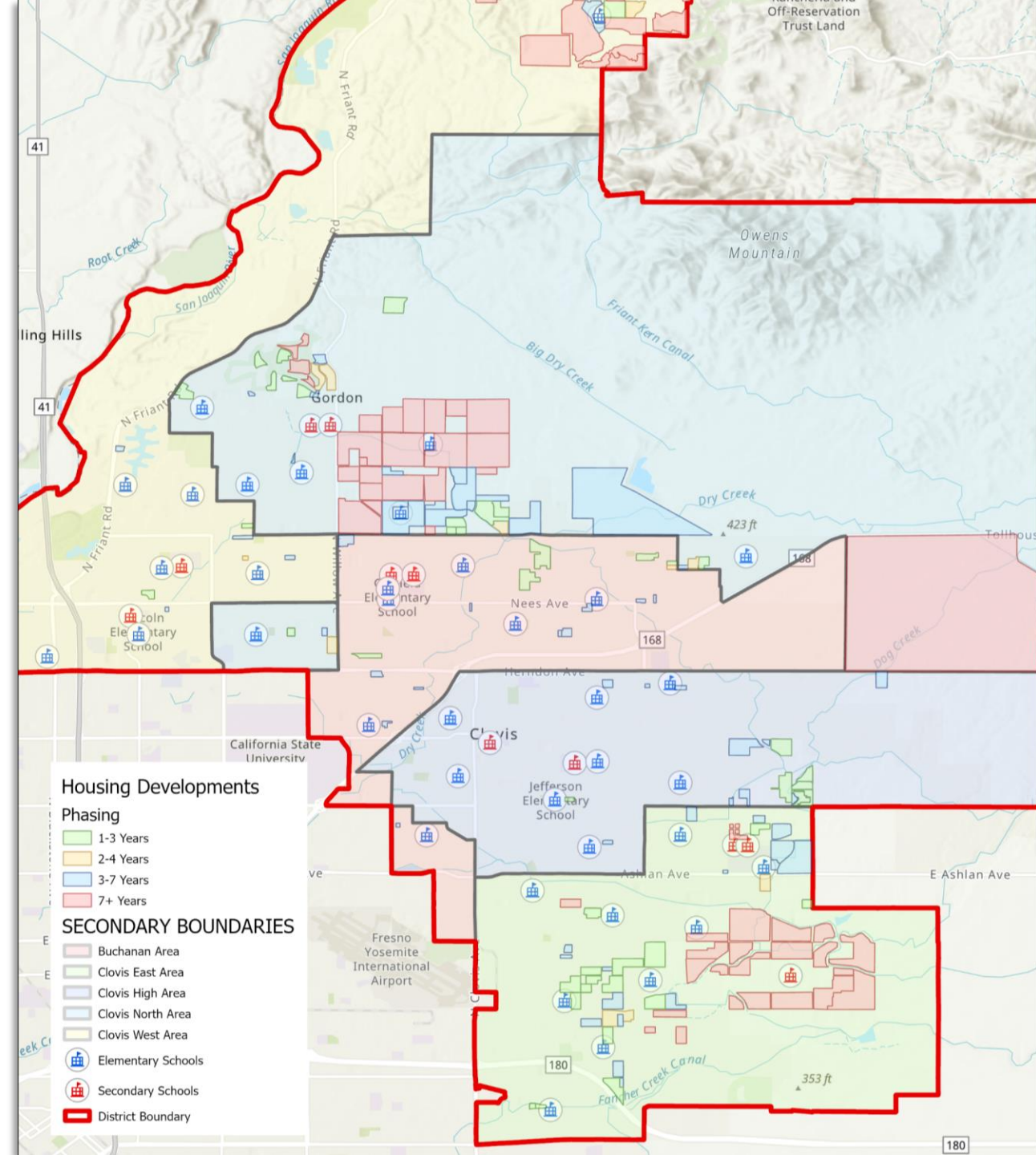
Terry P. Bradley

Educational Center Area



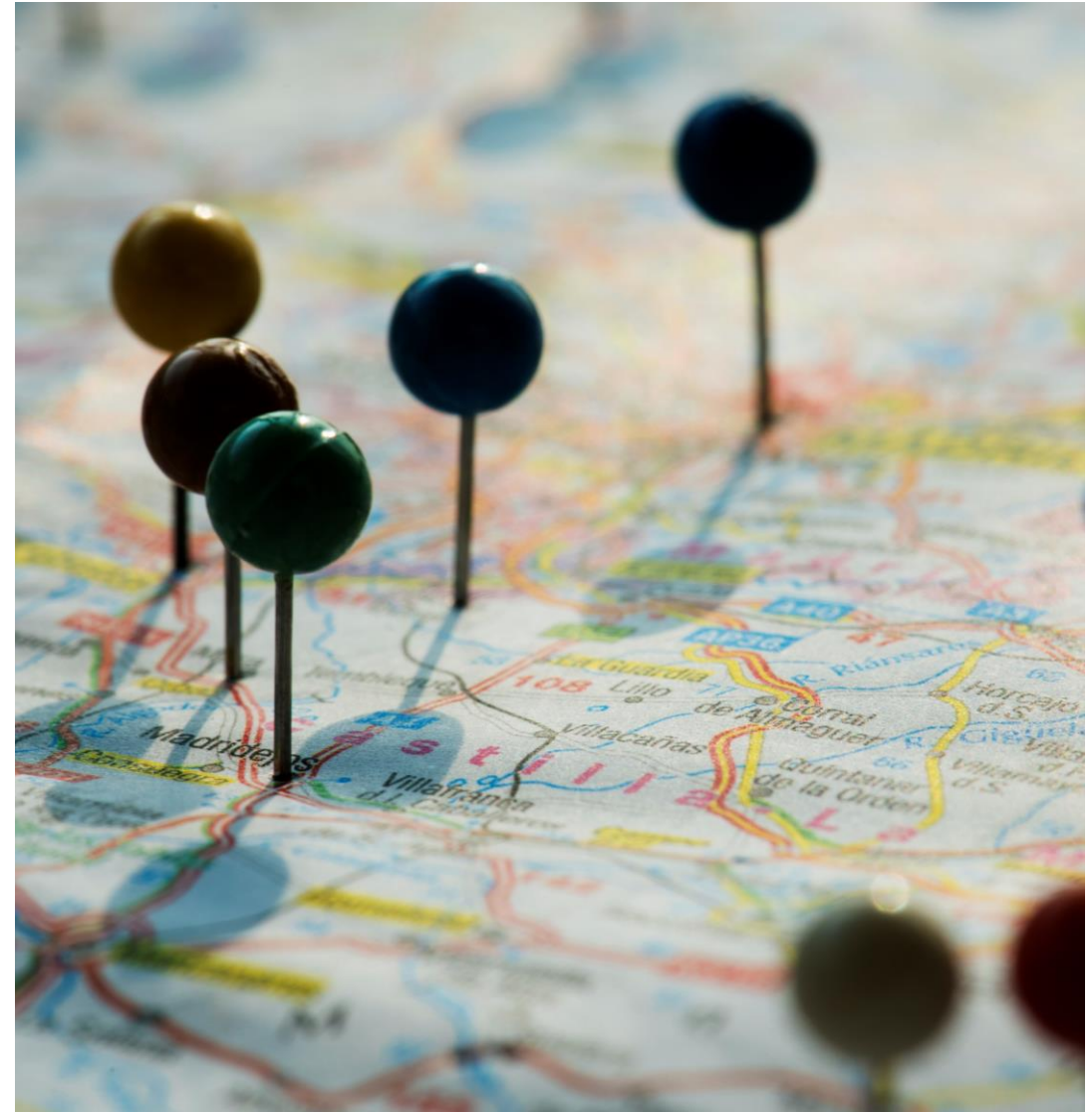
Our Starting Point

Continued Growth in the Cities of Clovis and Fresno



Purpose of Attendance Boundary Study

- Opening of the Terry P. Bradley Educational Center (TBEC) in 2025:
 - Relieves overcrowding at the Reagan Educational Center
 - Prepares for continued residential development in the district
- New Attendance Area Needed for New Educational Center
- Maximize Existing School Capacity to Maintain Strong School Communities in Every Part of the District



School Capacity Challenge: Too Large

If nothing changes, within a few years enrollment far exceeds capacity at:

- Fugman
- Riverview
- Cedarwood
- Dry Creek
- Reyburn
- Clovis East

Overcrowding stretches facilities like restrooms, cafeterias, playgrounds, classrooms, and more.

School Capacity Challenge: Too Small

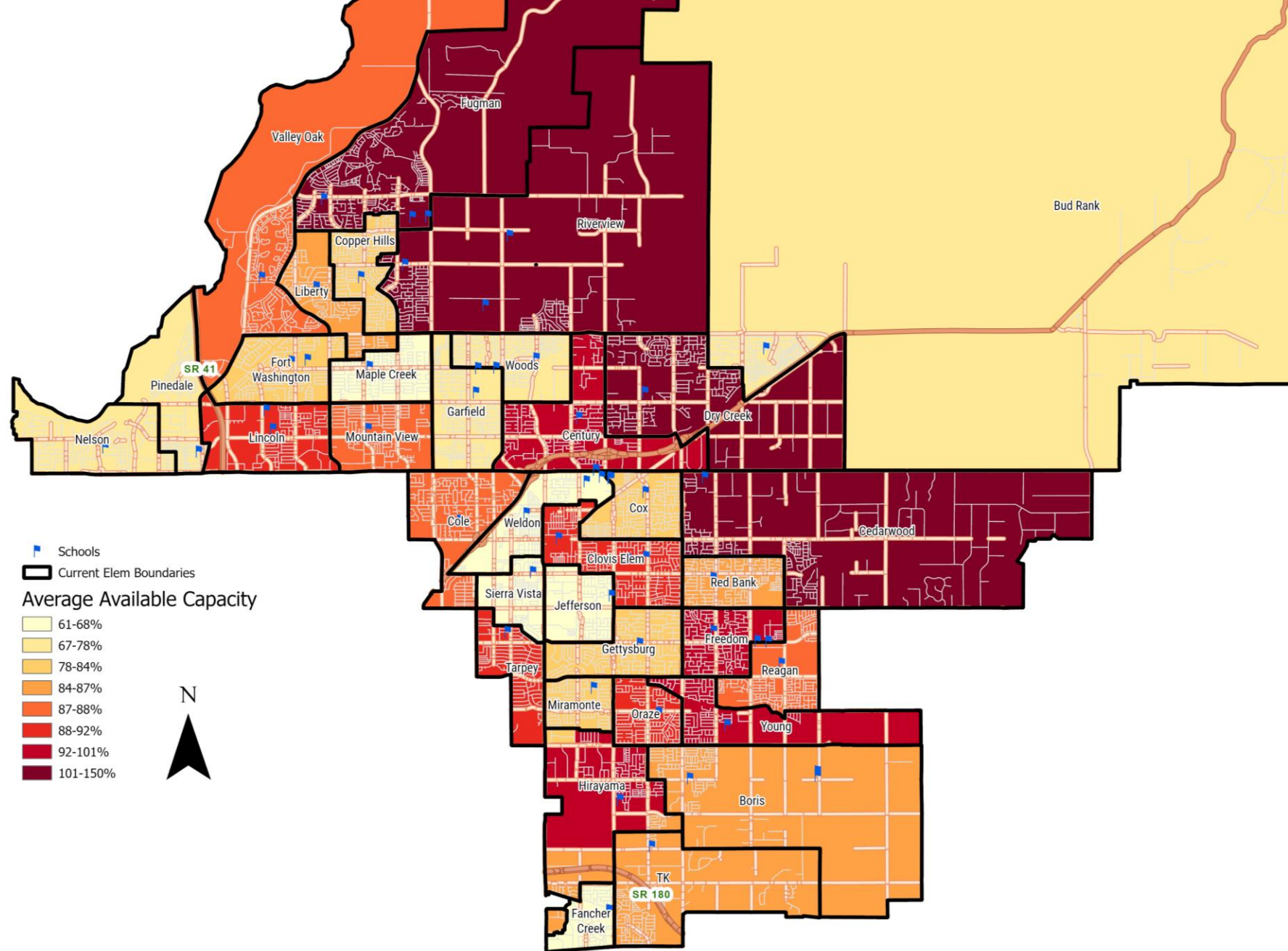
If nothing changes, within a few years some schools in other parts of the district will be significantly under capacity.

- Jefferson
- Maple Creek
- Nelson
- Pinedale
- Sierra Vista
- Valley Oak
- Weldon

Under-enrollment makes it difficult to provide students with similar co-curricular and academic programming as that of larger schools.

Challenge

If no changes made, some schools would be underutilized, others would be extremely over-crowded



Boundary Study Timeline & Process

- Boundary Steering Committee Met Five Times Between September 13, 2023, and December 13, 2023
 - Reviewed demographic, enrollment projections, and new housing and city planning data
 - Developed two initial recommendations based on established guidelines
- Community Input Process Now Begins (January – March)
- Resulting Final Proposal Released (March 29, 2024)
- Board Takes Action on Final Proposal (April 18, 2024)

Boundary Study Timeline & Process

- **Fri, Jan 26** – Draft boundary maps released online to community
- **Jan 30 – Feb 8** – Community Meetings , Feedback Gathered and Analyzed
- **Feb – March** – School SART Meetings, Public Input Process Continues
- **March 29** – Final Recommended Map Released to Community
- **April 3** – Recommended Map Presented to Governing Board for Discussion
- **April 12** – Online Comment Period Closes
- **April 17** –Governing Board Takes Action on Recommended Map
- **Fall 2025** – New Boundaries Take Effect

Why Do We Have School Attendance Boundaries?

- Area Concept Connects Groups of Elementary Schools to Secondary School/Complex
- Creates Connectivity and Identity with Neighborhood Schools
- Create Schools Sized to Offer Wide Range of Student Programs
- Give Opportunities to ALL Children
- Maximizes Efficient and Effective Use of Resources for Students

Why Adjust Boundaries in the Clovis North Area?

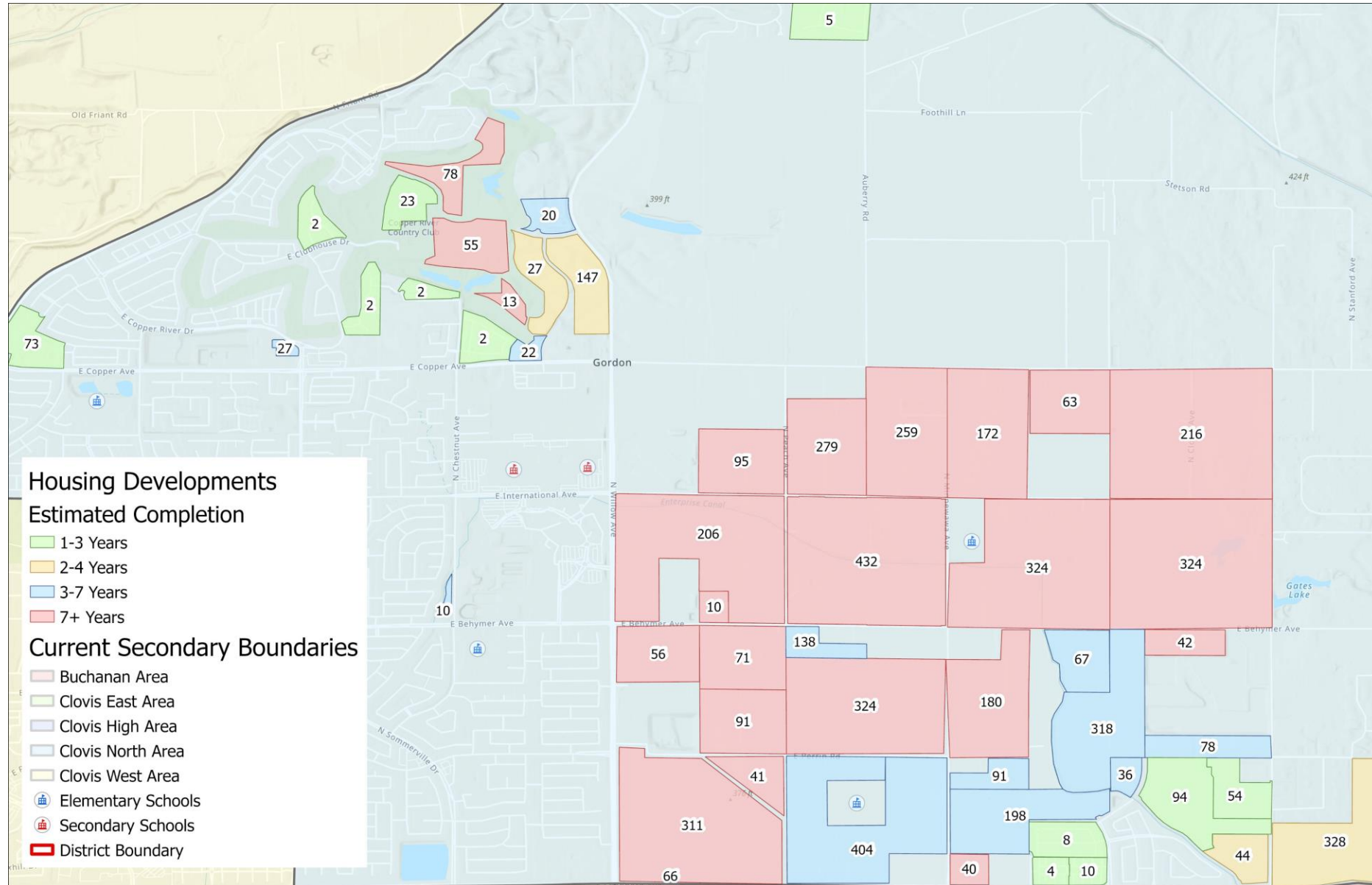


- Over **1,700** new students are projected from Copper River, Heritage Grove and other surrounding developments over the next 10 years
- Current capacity can accommodate an additional **460** students in the Clovis North area schools
- Current capacity in the Clovis West Area for an additional 770 students and expected to increase in future years
- Space exists to house projected enrollment if existing facilities are maximized in multiple high school areas



Clovis North Development

Counts represent anticipated TK-12 grade students from remaining development



Why Adjust Boundaries in the Clovis West Area?

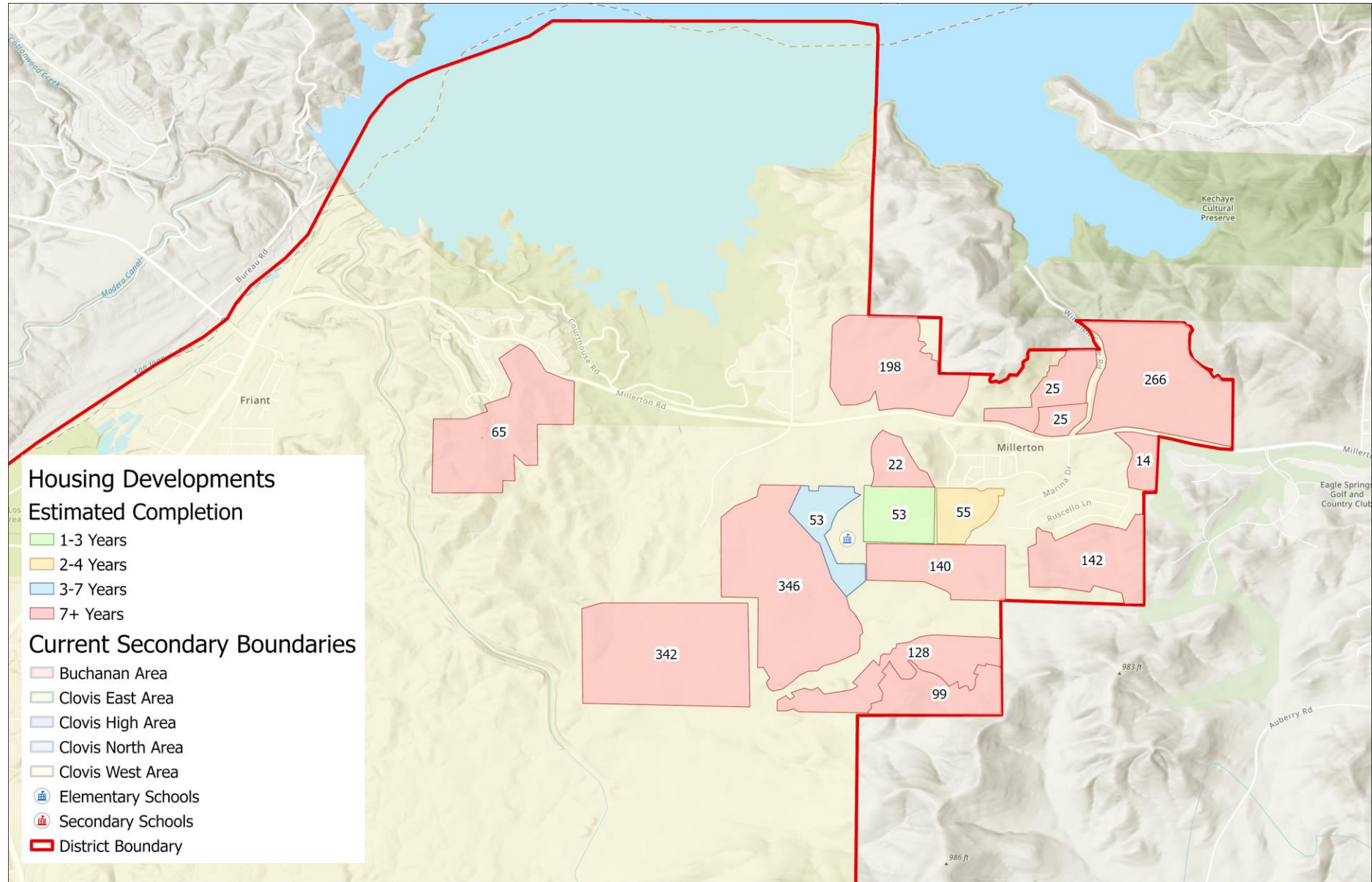


- There is current capacity in the Clovis West Area for an additional **770** students and that number is expected to grow in the coming decade.
- Over **1,700** new students are projected from Copper River, Heritage Grove and other surrounding developments in the Clovis North area over the next 10 years
- There is currently only capacity for an additional **460** students in the Clovis North area schools
- Space exists in the Clovis West Area and if used, avoids overcrowded schools in other Areas and under-enrolled schools in the Clovis West Area



Clovis West / Millerton Development

Counts represent anticipated TK-12 grade students from remaining development



Why Adjust Boundaries in the Buchanan Area?

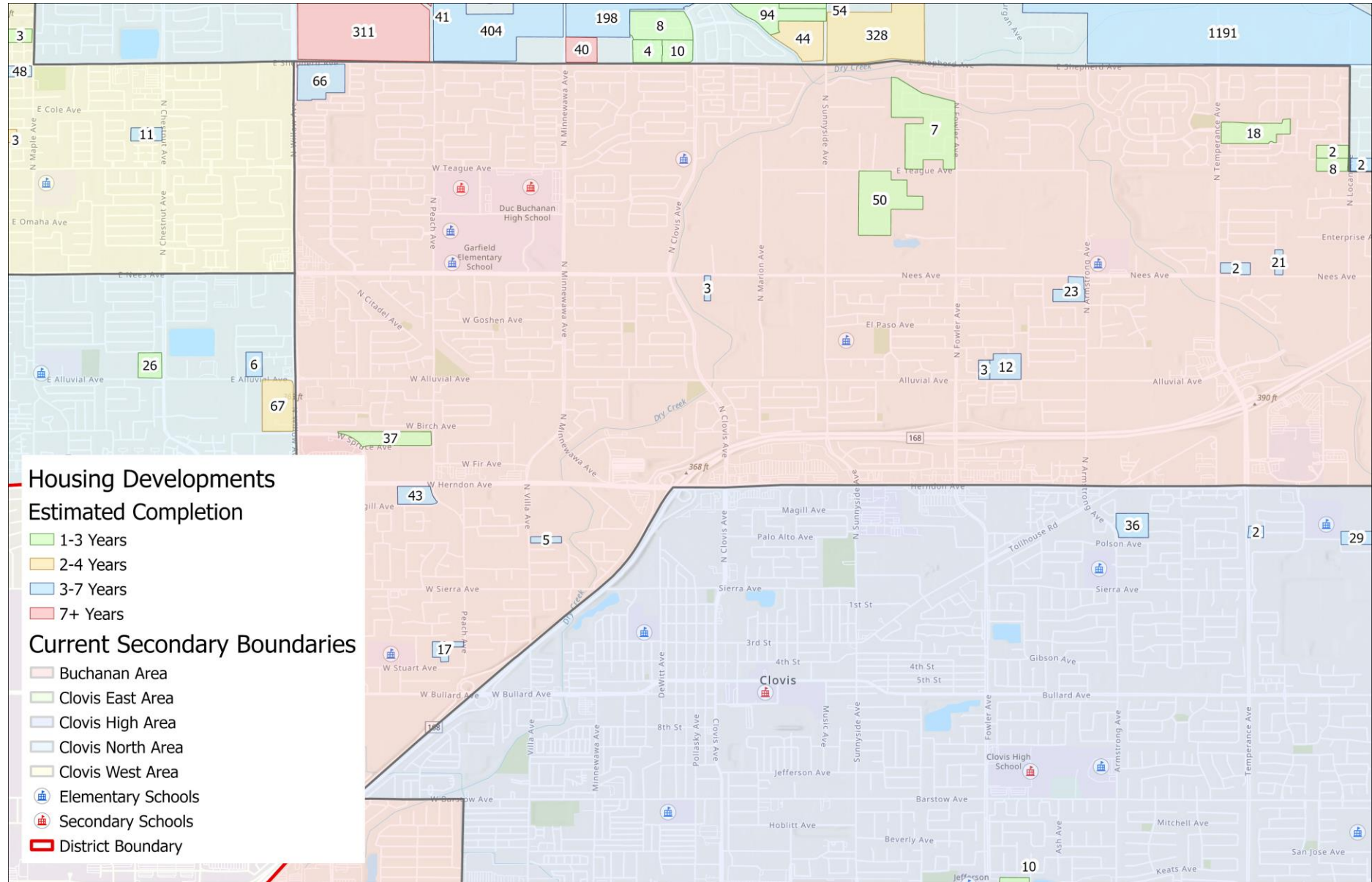
- Maximize the use of existing facility space between area elementary schools where possible
 - Dry Creek's enrollment is projected to remain over capacity through the next 10 years
 - Woods and Garfield are projected to continue to decrease in enrollment, creating space to relieve overcrowding at Dry Creek
 - Growth in the Heritage Grove area of the City of Clovis is expected to crowd current Clovis North Area schools





Buchanan Development

Counts represent anticipated TK-12 grade students from remaining development



Why Adjust Boundaries in the Clovis High Area?

- Development in the Cedarwood Area is causing overcrowding
- Jefferson, Sierra Vista and Weldon are decreasing in enrollment and will see enrollment fall under 500 students if unchanged
- Need to balance enrollment and maximize existing facility space within Clovis High Area
- As development continues in the east and southeast parts of the District, and the Terry P. Bradley Educational Center opens, need to balance secondary enrollment



Why Adjust Boundaries in the Clovis East Area?

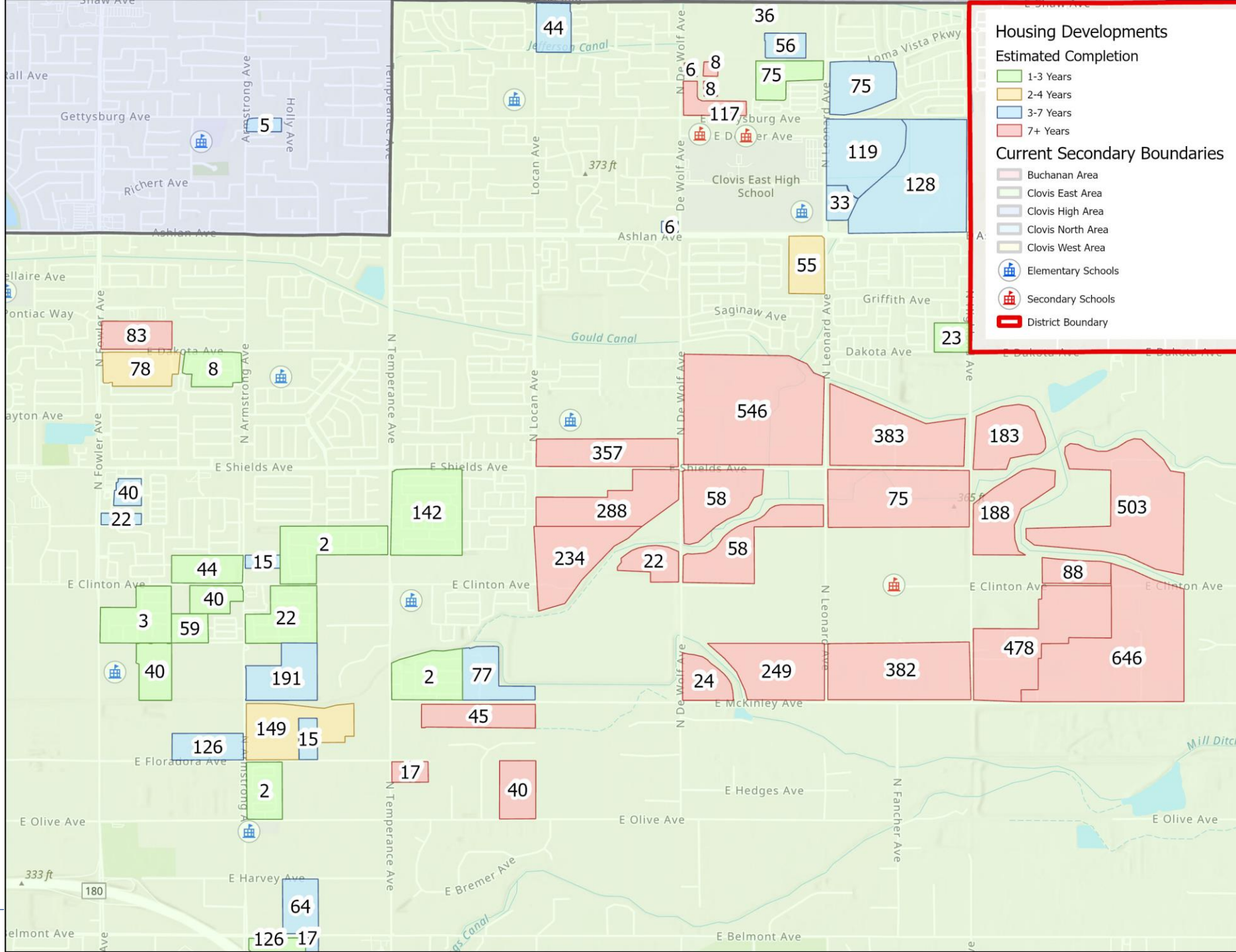
- The Reagan Educational Center is currently 200 students over capacity and continues to grow from development in Clovis' Loma Vista and Fresno's southeast areas
- Opening of Terry P. Bradley Educational Center and creation of its boundaries reduces number of elementary schools in the Clovis East Area
- Unbalanced enrollment at schools requires modifications to avoid over- or under-enrolled schools





Clovis East Development

Counts represent anticipated TK-12 grade students from remaining development



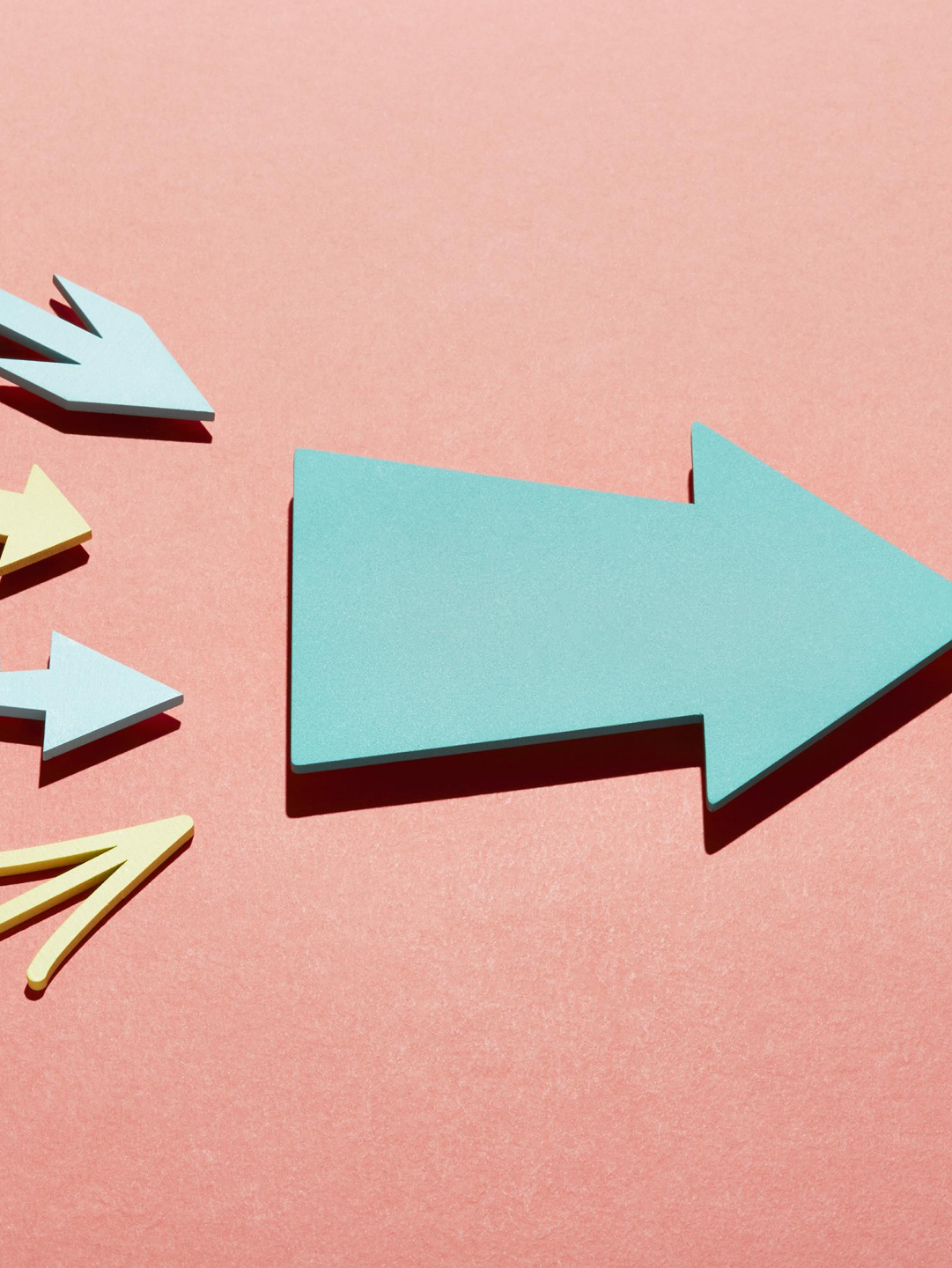
Projected Enrollment Over Next Decade

Area	New Single-Family Homes	New Apartments	Projected Population Growth
Buchanan Area	267	642	-512
Clovis East Area	5,562	1,825	2,038
Clovis High Area	519	399	-922
Clovis North Area	7,464	2,300	2,425
Clovis West Area	440	442	-366

Our Commitment Throughout

- Ensure Facilities are Equitable Across Clovis Unified for ALL students
- Recognize and Value that Our Schools Belong to Our Community
- Use Resources Wisely and Efficiently
- Build New Schools Only When Necessary





Guiding Principles

- Maximize existing facility space while moving the least number of students
- Value neighborhood schools and keep neighborhoods together
- Reduce operational expenses
- Create boundaries that will last for 5-10 years whenever possible, and
- Balance enrollment across high school areas

Who is Impacted

- Based on a student's grade in 2025-26:
 - TK - 5th grade follows new boundary
 - 6th grade has option to finish at current school, but would follow new boundary for 7th grade (younger siblings have an option to follow for 1 year)
 - 7th-9th grade follows new boundary
 - 10th - 12th grade remains at current school
- After allocating staff using the new attendance areas, existing transfer options will be offered based on available space
- Existing Open Enrollments approved through 6th grade remain in effect, but would follow new secondary area if applicable
- Board Policy 5116 outlines accommodations for siblings at secondary schools

Sibling Accommodations (BP 5116) for Families Impacted by Boundary Changes

2025-2026 School Year

7th, 8th or 9th grade students who have an older sibling who will be in 10th - 12th grade may apply (in the 2024 Open Enrollment window) to remain at their original secondary school under the sibling rule.

Future Years

If the above applies to your family, younger students from the same family may also enroll at the intermediate school, and then high school of the original attendance area on an approved Sibling Policy transfer so long as their secondary enrollment is concurrent with an older sibling.

Master Facility Timeline

TBEC

TBEC Opens for Grades 7-9
August 2025

TBEC Expands to include
Grade 11
August 2027

Elementary School #36
Opens August 2030



Hirayama Elementary
Opens August 2024

TBEC Expands to include
Grade 10
August 2026

TBEC Expands to include
Grade 12
August 2028

Approval and Implementation Next Steps

- After community input is analyzed and maps finalized, Governing Board will take action on April 17 to adopt new attendance boundaries
- Final recommend map released to community on April 3
- Online comment period open through April 12
- New attendance maps will become effective in August 2025