

C O O L

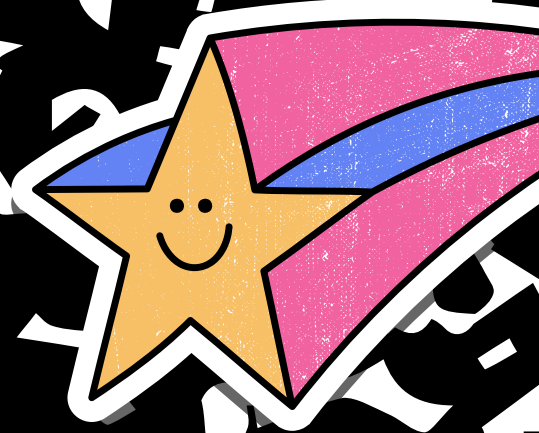
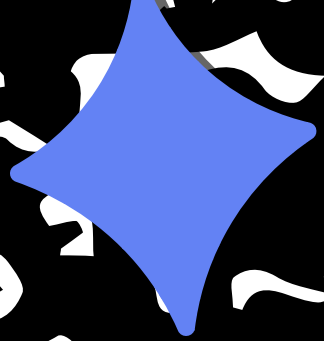
# IDAC MEETING

---

Tuesday, October 8, 2024

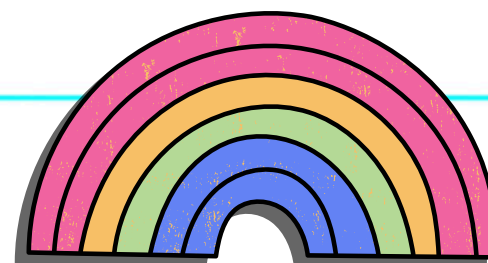
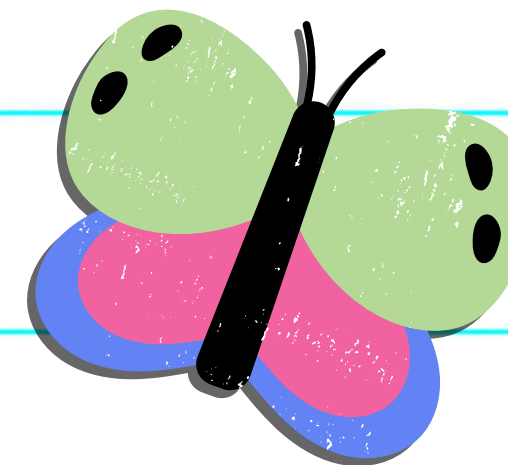
---

Clovis Elementary School

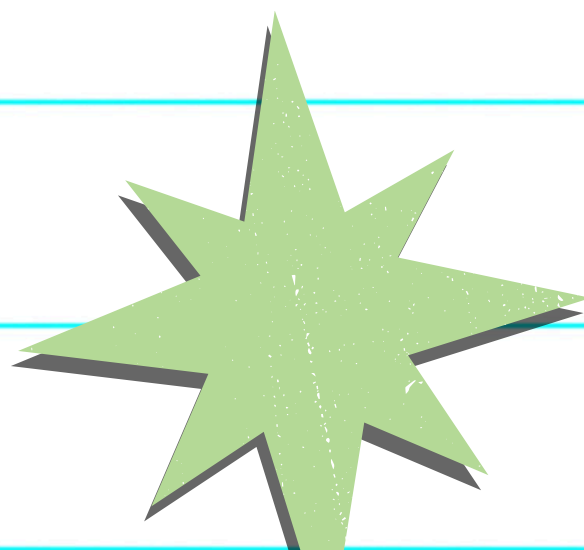
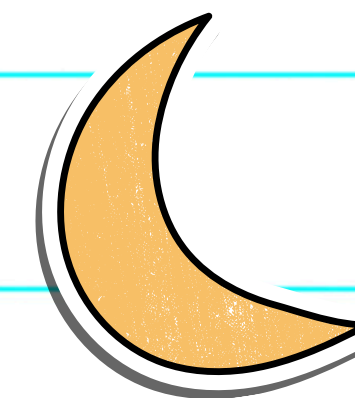


*Dream*

# IDAC

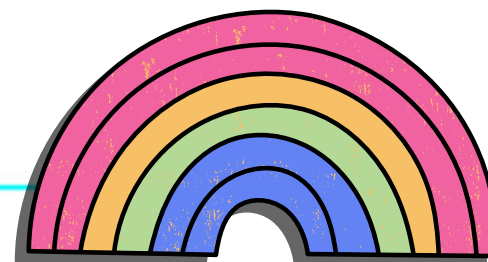
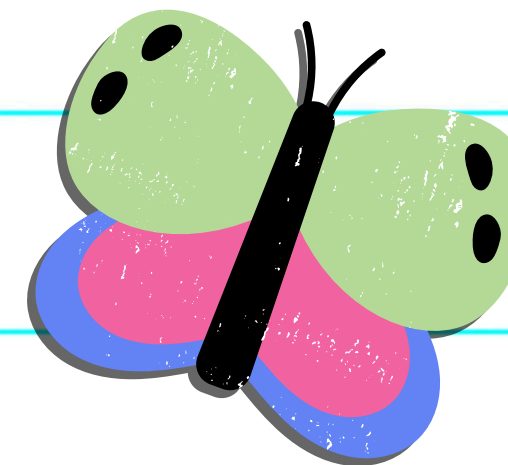


**Intercultural Diversity Advisory Council (IDAC) draws members from parents to represent our school at district level climate assessment/problem-solving meetings. The primary purpose of the Intercultural Diversity Advisory Council (IDAC), originally formed in 1988 as the Intercultural Advisory Council, is to assist in the formation and review of policies that assure non-discriminatory practices in all operational areas of the Clovis Unified School District. Its further mission is to assist in improving the cultural environment of the District.**

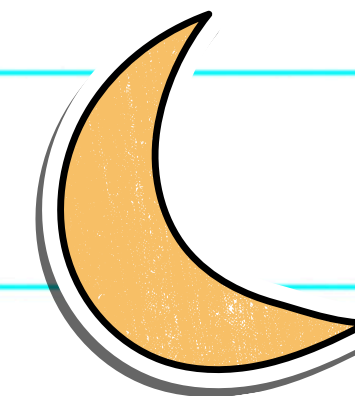
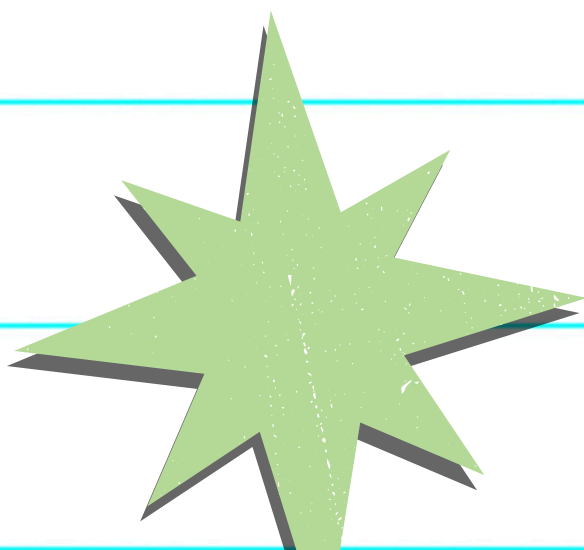


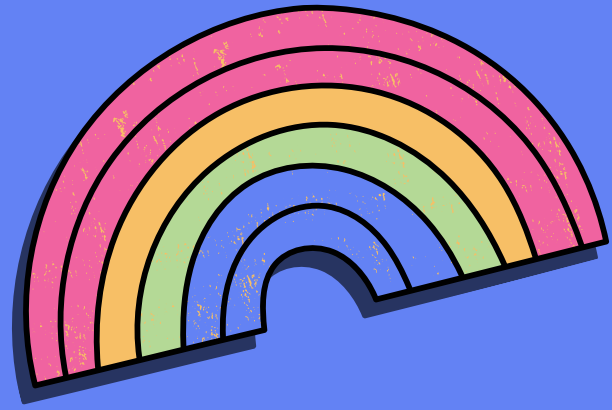
*Dream*

# PASA



**Principal's Advisory on Student Affairs: This group is comprised of a diverse group of students who are collaborative, good listeners, and have leadership abilities. You will meet with the principal once per quarter, or more as needed, to discuss school climate and activities to promote positivity. All PASA representatives will be expected to give a report to their classes about what was discussed in each meeting.**



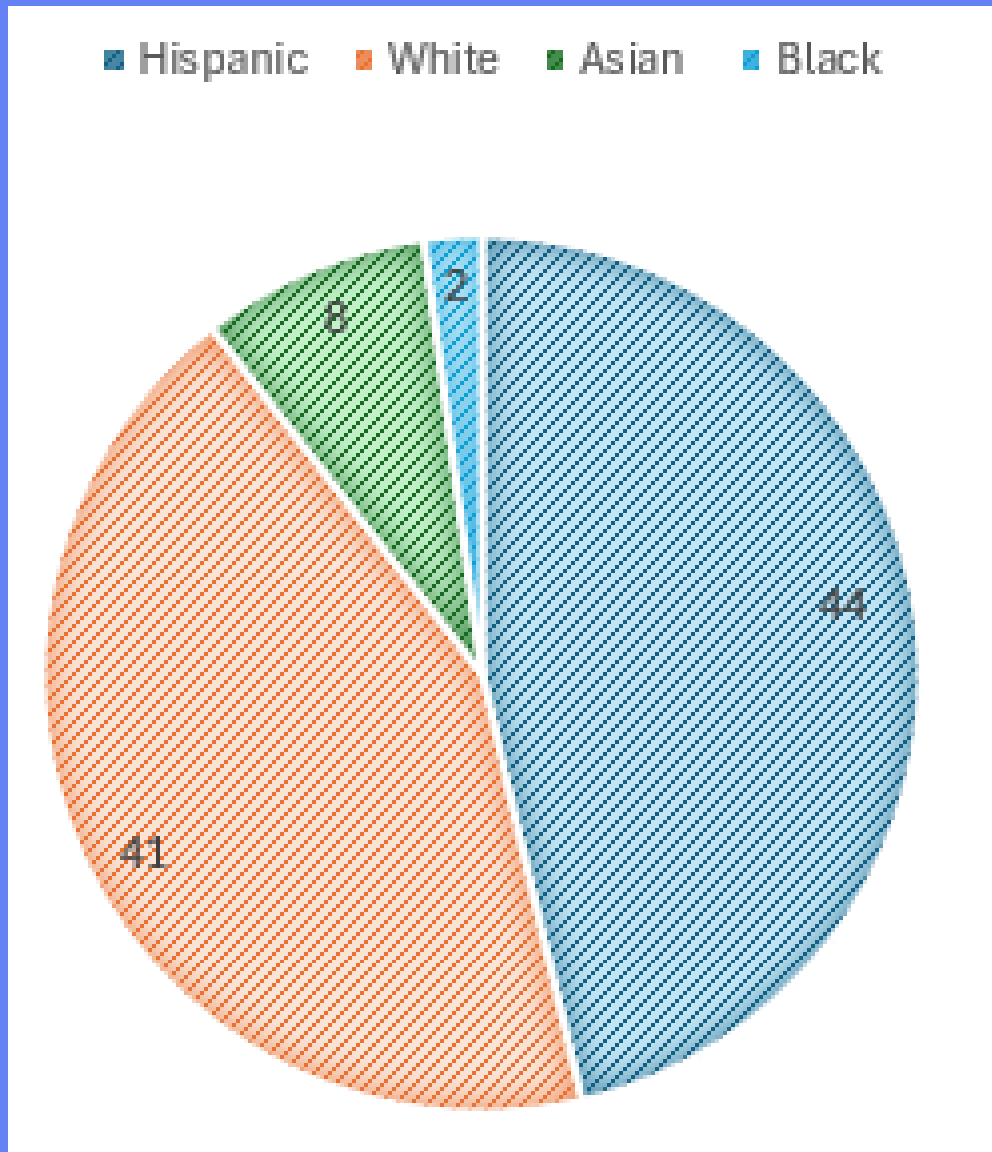
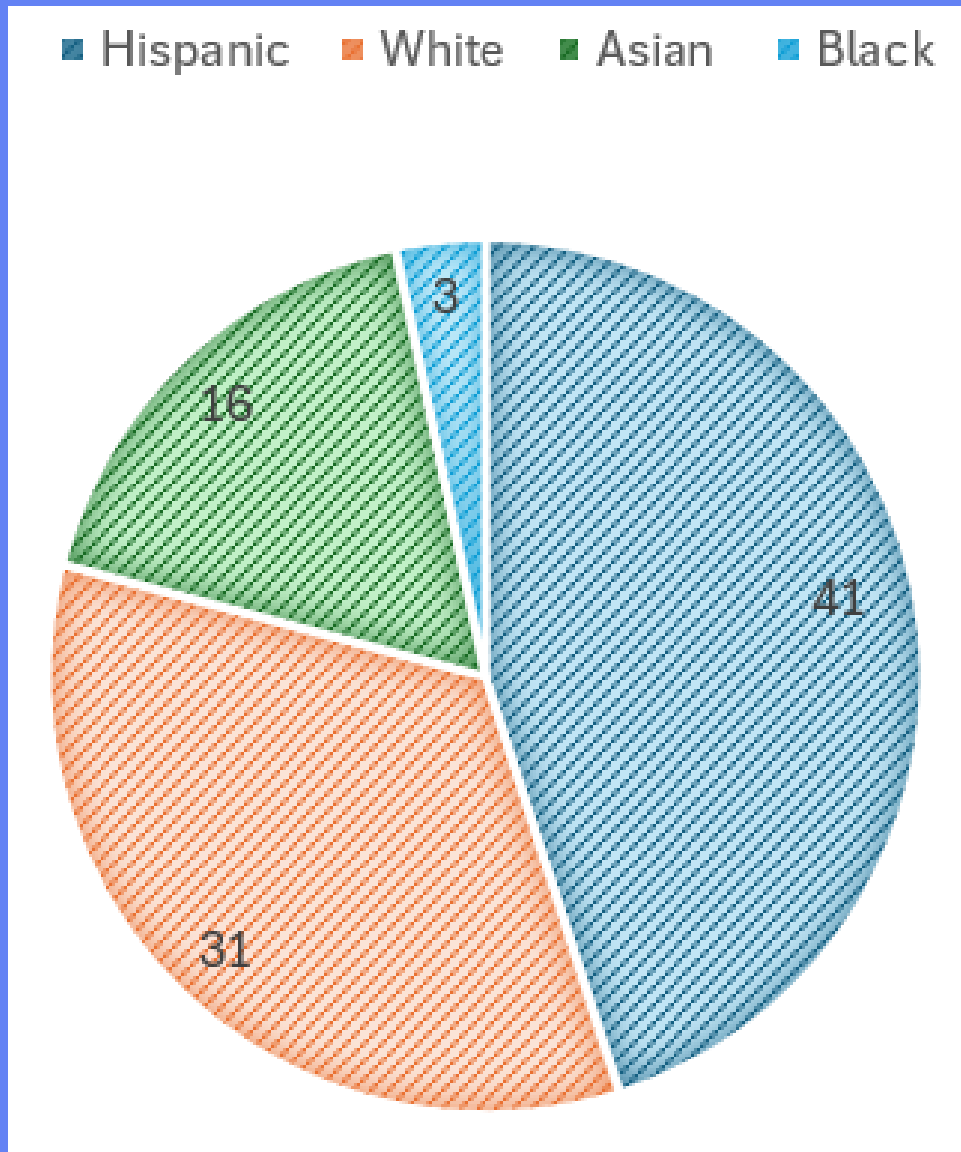


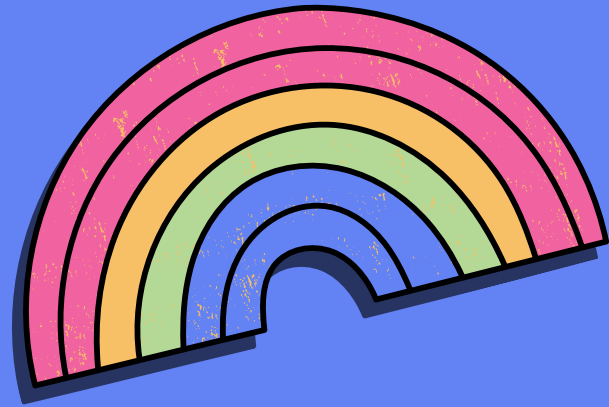
# Demographics



**CUSD**

**CES**



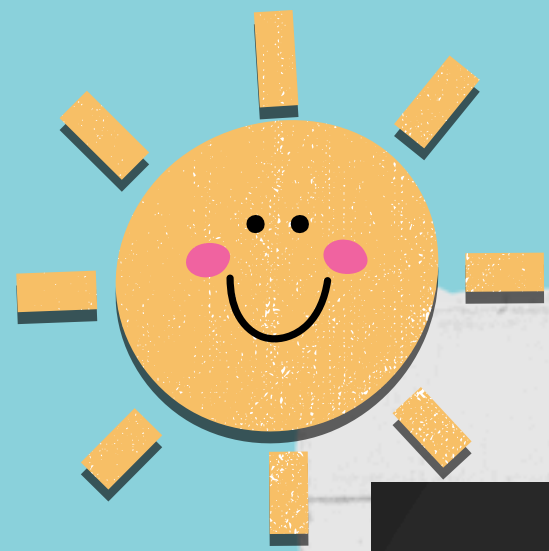


# Multilingual Students



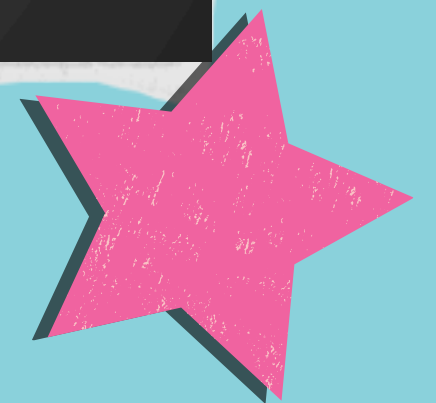
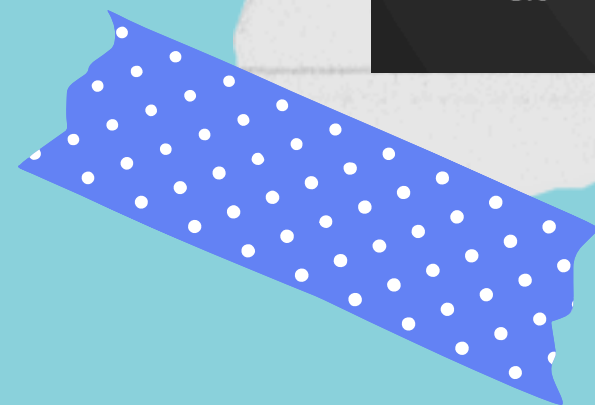
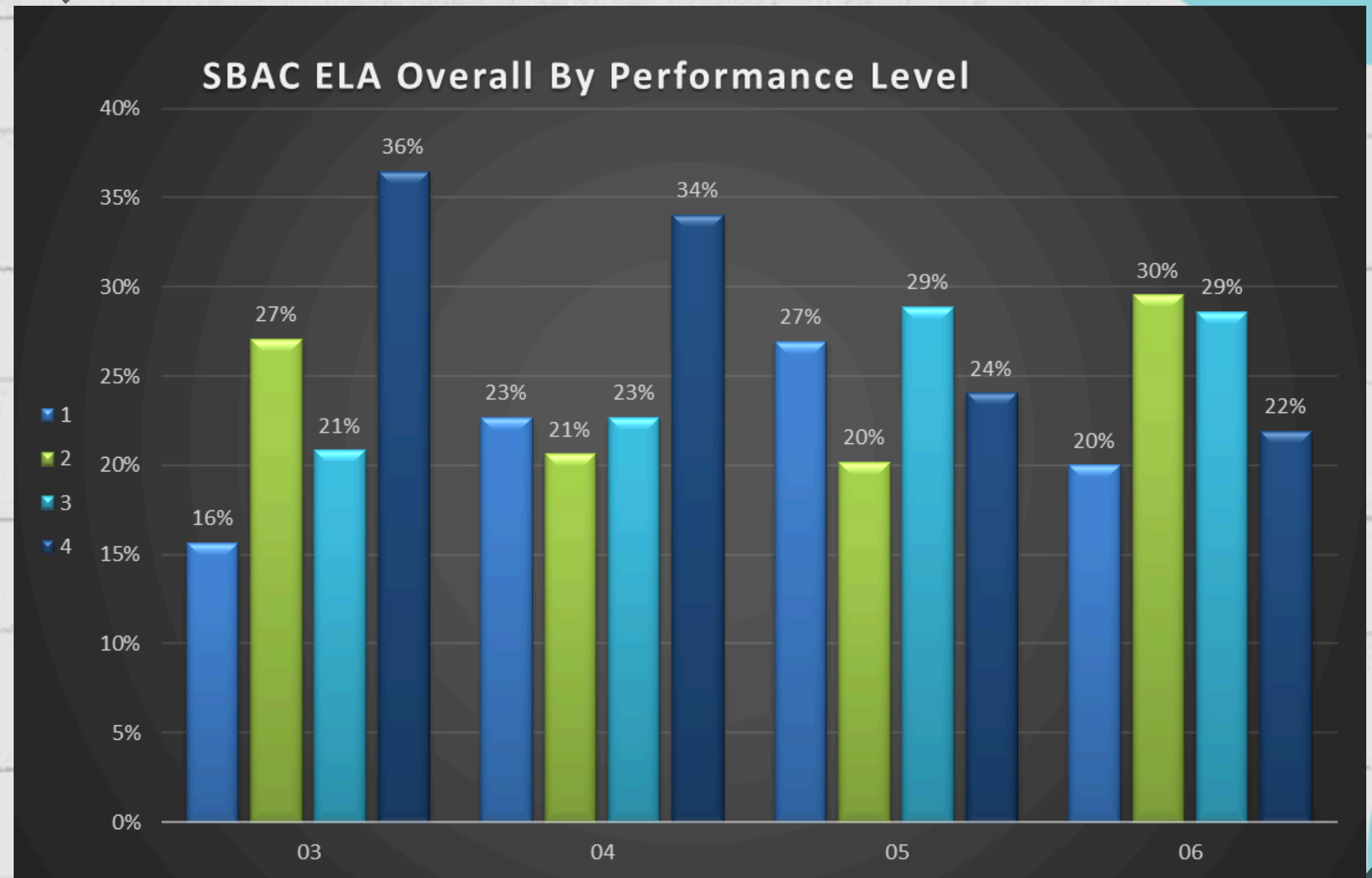
**SPANISH**  
**CAMBODIAN**  
**HMONG**  
**RUSSIAN**

| Grade  | # of Students |
|--------|---------------|
| Kinder | 4             |
| 1      | 2             |
| 2      | 1             |
| 3      | 5             |
| 4      | 5             |
| 5      | 2             |
| 6      | 4             |

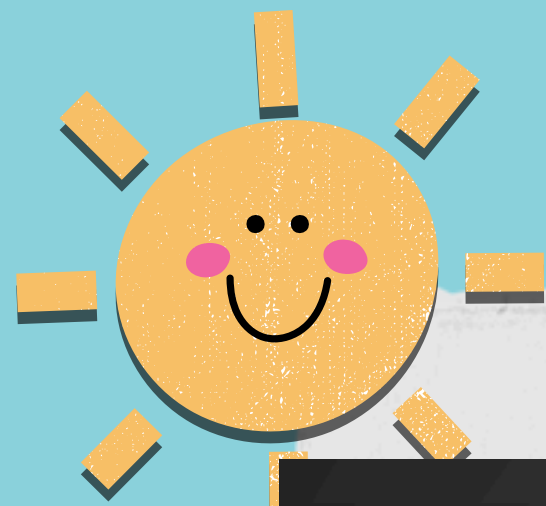


SUPER

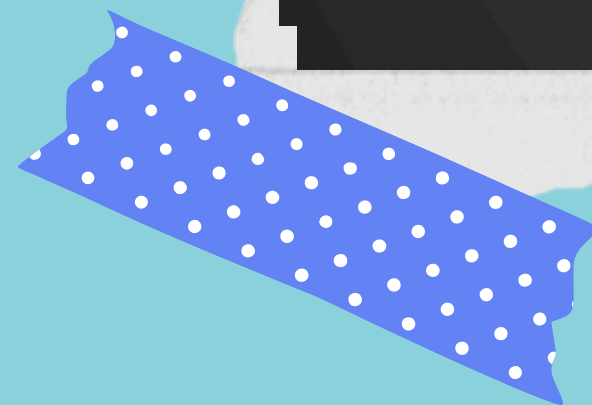
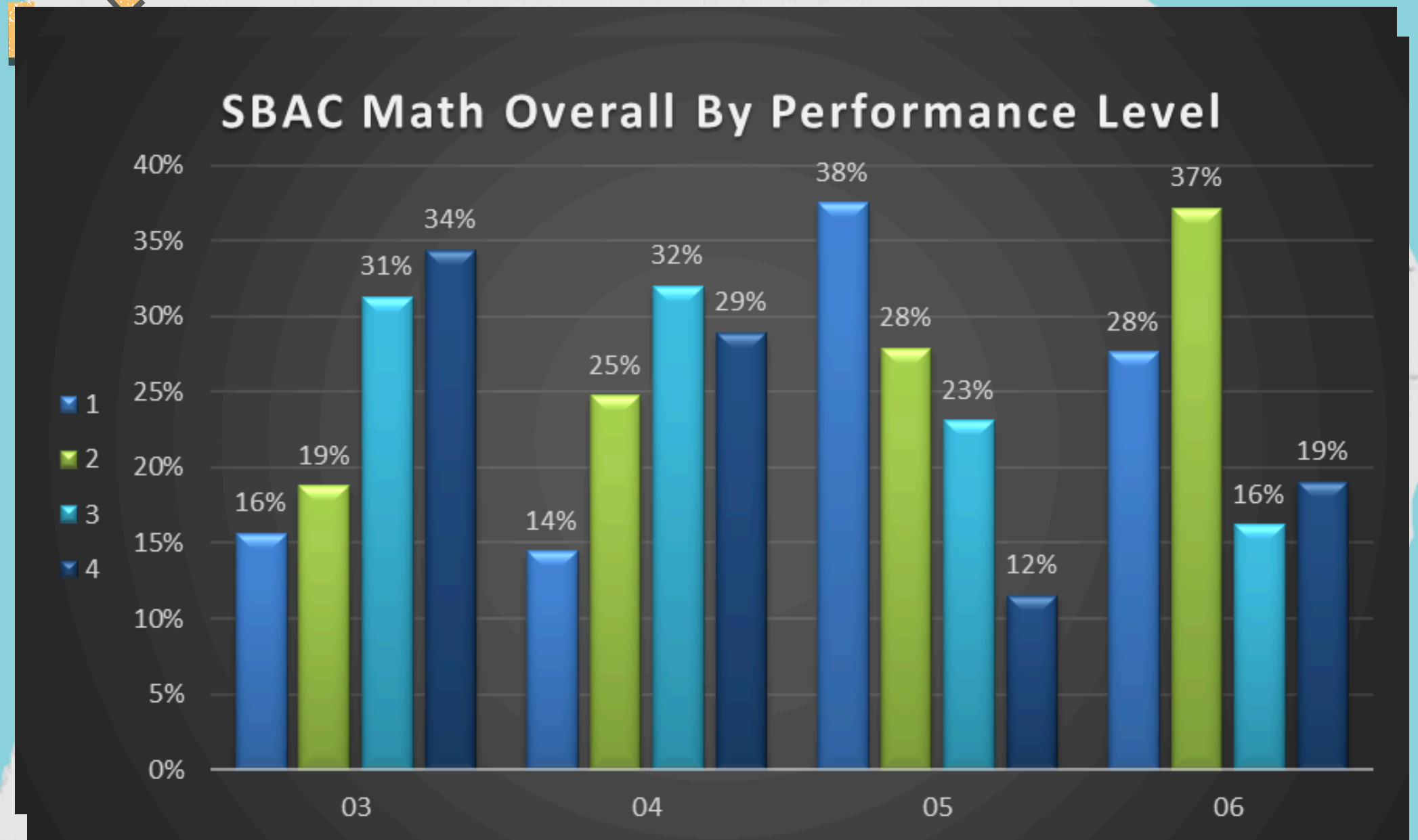
# Academic Achievement ELA



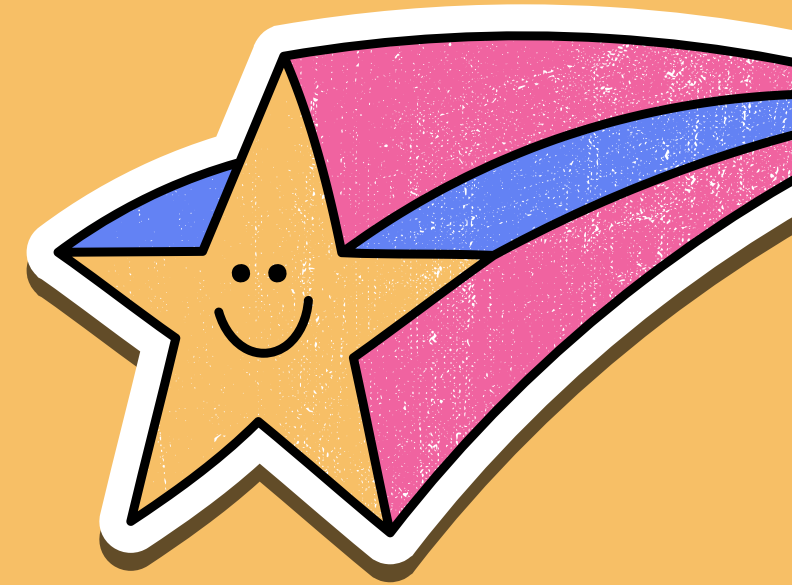
# Academic Achievement Math



SUPER



# Building Community Through



**LEGACIES**



**RESPECT**



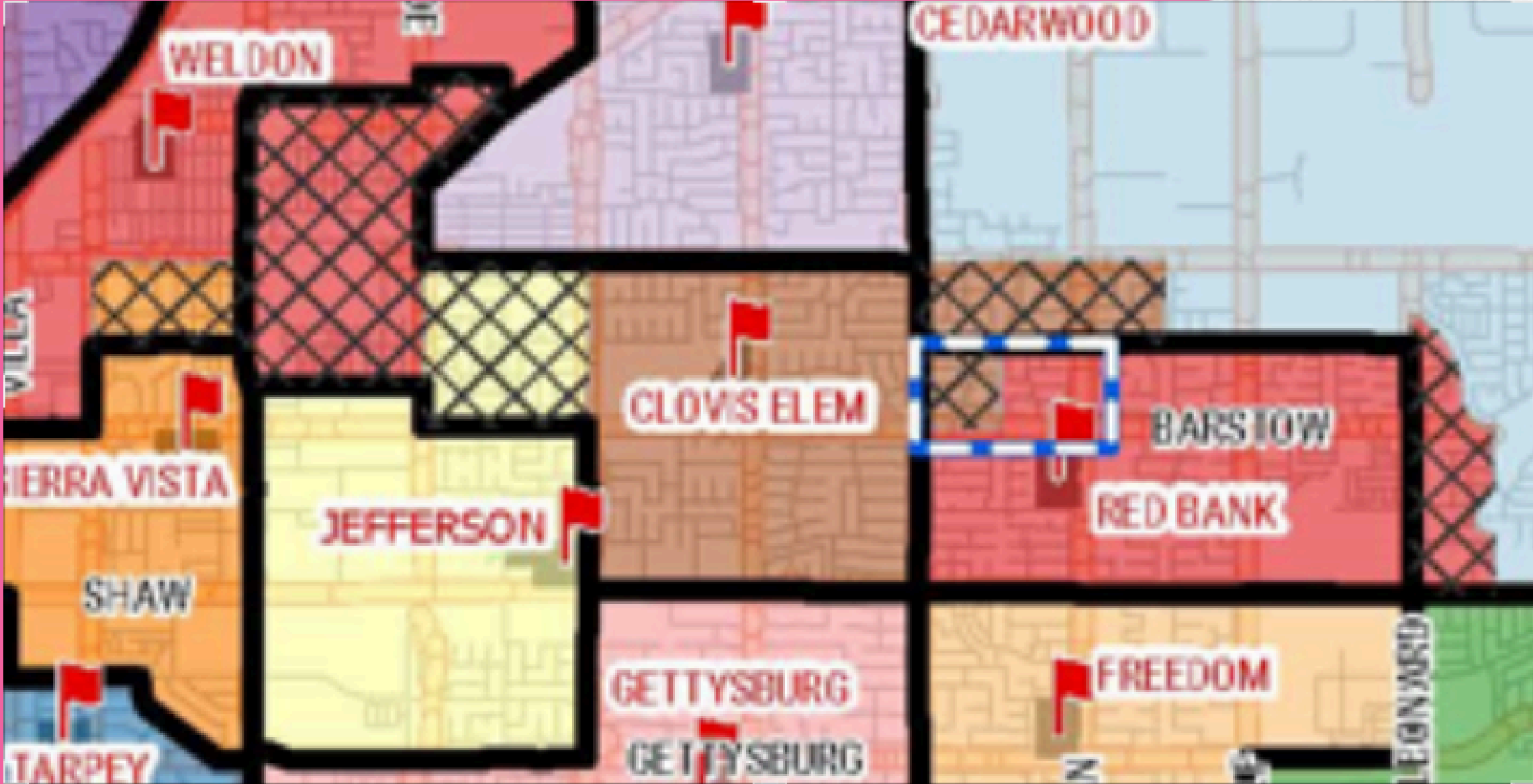
**COMMITMENT**



**PRIDE**



# 2024-25 Boundary Changes



**Area One**  
**Change of Elementary**  
**School**  
**No Change in**  
**Secondary School**

Cedarwood ES to Clovis ES  
 Cedarwood ES to Red Bank ES  
 Century ES to Woods ES  
 Century ES to Garfield ES

Clovis ES to Weldon ES  
 Clovis ES to Jefferson ES  
 Dry Creek ES to Century ES  
 Fugman ES to Copper Hills ES  
 Liberty ES to Valley Oak ES

Oraze ES to Miramonte ES  
 Red Bank ES to Clovis ES  
 Valley Oak ES to Ft. Washington ES  
 Weldon ES to Sierra Vista ES

| Student/Sibling  | School Attendance   | Accommodations   |
|--|---|--|
| <b>TK through 4<sup>th</sup> Grade</b><br>Student must be in grades TK-4 <sup>th</sup> during 2025-26 school year.   | Must attend New School Except for Eligible Sibling of a 5 <sup>th</sup> or 6 <sup>th</sup> grader who has a Boundary Exception.   | <b>None</b>  |
| <b>5<sup>th</sup> and 6<sup>th</sup> Grade</b><br>Student must be in 5 <sup>th</sup> or 6 <sup>th</sup> grade during 2025-26 school year.  | May attend either the original school or the new student for 5 <sup>th</sup> and 6 <sup>th</sup> grade.   | <b>Declaration of Attendance</b> required from <b>ALL</b> 5 <sup>th</sup> and 6 <sup>th</sup> graders to declare where they will attend. Once turned in and processed, they will have a "Boundary Exception."<br><b>Must be turned in between October 7, 2024, and October 24, 2024.</b> |
| <b>Younger Sibling of 5<sup>th</sup> and 6<sup>th</sup> Grader</b><br>Student must be a younger sibling of a 5 <sup>th</sup> or 6 <sup>th</sup> grader who has been granted a Boundary Exception | May attend the original school with a 5 <sup>th</sup> or 6 <sup>th</sup> grade sibling who was granted a Boundary Exception. Once the 5 <sup>th</sup> or 6 <sup>th</sup> grader matriculates to 7 <sup>th</sup> grade, the younger sibling will attend the newly assigned school. | <b>Priority Intradistrict Transfer</b><br><b>Must be turned in between October 7, 2024, and October 24, 2024.</b>  |

# Measure A

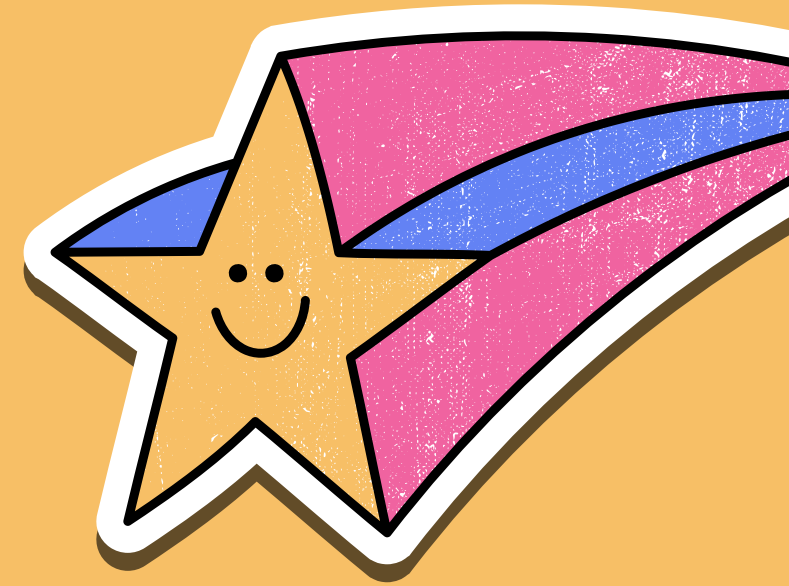
- ALL 2020 BOND FUNDS ARE SPENT OR COMMITTED
- TODAY, MORE THAN 30 SCHOOLS ARE OVER 30 YEARS OLD WITH MANY BUILT BEFORE 1960.
- POST-PANDEMIC COST ESCALATIONS IMPACTED CONSTRUCTION BUDGETS AND TIMELINES
- ABILITY TO LEAVE TAX RATE AS IT IS TODAY AND CONTINUE TO KEEP SCHOOLS IN GOOD REPAIR, UPDATED AND EQUITABLE FOR ALL STUDENTS

**IF MEASURE A IS APPROVED, OUR SCHOOL WILL RECEIVE:  
MPR FLOORING, SAFETY ENHANCEMENTS, AV TECHNOLOGY IMPROVEMENTS, LED LIGHTING UPGRADES**

C O O L



# Stay Connected



**PARENTSQUARE**



**CLOVISELEM.CUSD.COM**



**WEEKLY CALENDAR**



**PTC, SART, IDAC..**