

**CLOVIS UNIFIED SCHOOL DISTRICT**  
**BID 2978 CLOVIS WEST HIGH SCHOOL**  
**WEST GYM FLOOR RECONSTRUCTION**

---

**Addendum No. 1**  
February 22, 2024

**Notice to Bidders:**

This addendum forms a part of the Bid /Contract Documents for the above referenced project and shall be incorporated integrally. Bidders are required to acknowledge receipt of this addendum on the sheet included with the bid package. Failure to acknowledge receipt of this addendum may subject the bidder to disqualification. Each proposer shall make necessary adjustments and submit their proposal with full knowledge of all modifications, clarifications, and supplemental data included therein. Where provisions of the following supplemental data differ from those of the original Bid / Contract Documents, this Addendum shall govern.

You are hereby notified of the following changes, clarifications or modifications to the original Bid /Contract Documents:

**Clarification – The Engineer of Record has agreed to consider the use of the attached flooring systems. Product Substitutions shall be submitted to the Engineer of Record and the District after award of contract.**

If you have any questions, please feel free to contact my office at 559-327-9477.

Lacey Wolf  
Buyer II  
LaceyWolf@CUSD.com

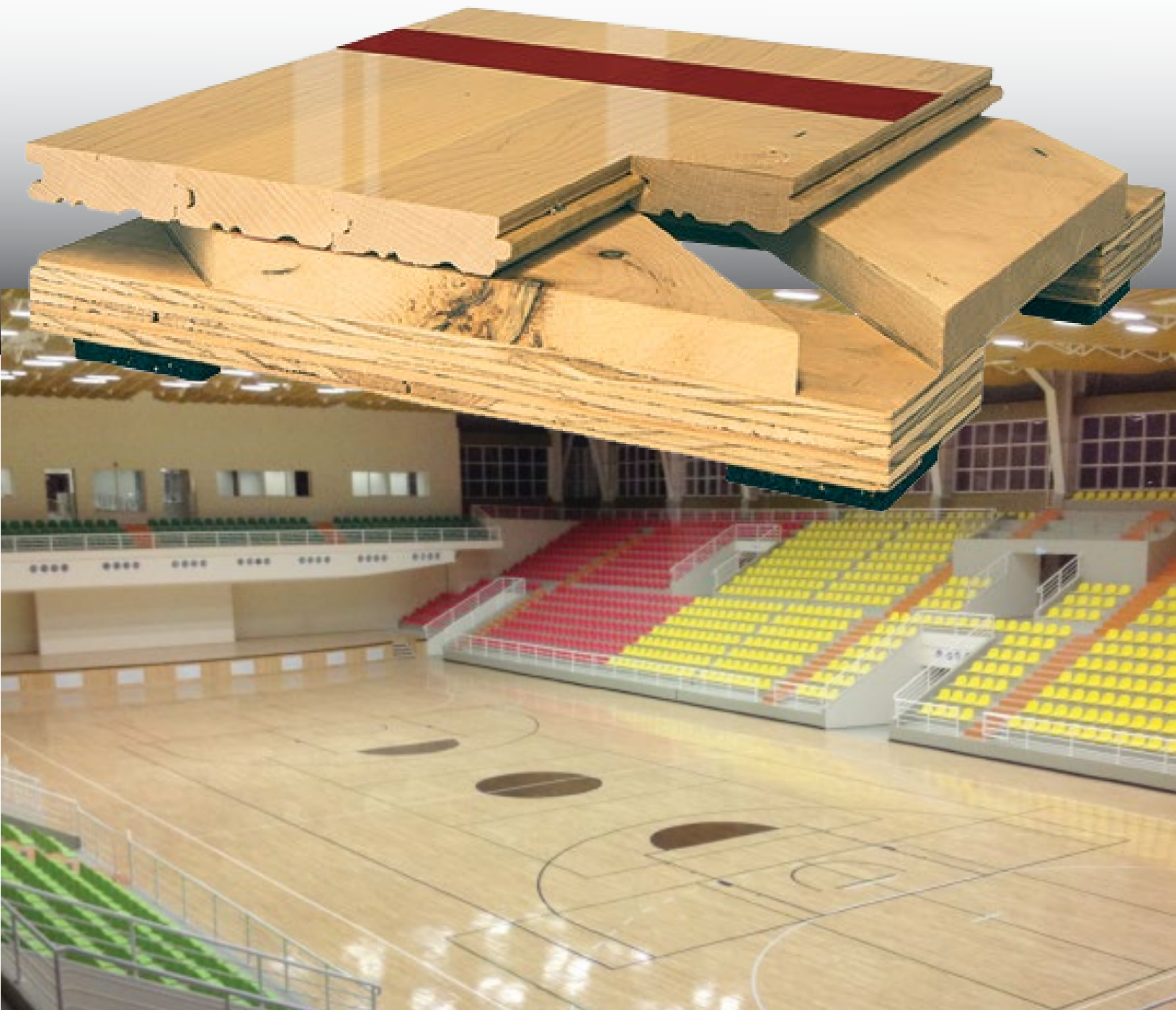
# PowerLoc™

FLOATING SYSTEM



AACER™  
SPORTS FLOORING  
an Infinity Wood Floors Company

PowerLoc is a hybrid of our ever popular ScissorLoc and PowerSleeper systems. The combination of these systems delivers a dimensionally stable floor with excellent ventilation capabilities. Our optional PowerVent™ system adds a feature to detect moisture and start drying the system with mechanical airflow. PowerLoc's uniform performance makes it a good selection for new and retrofit sports floor applications.



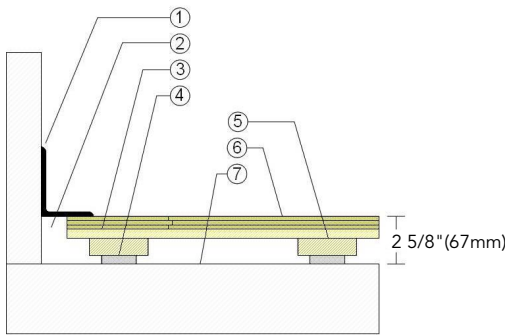
# PowerLoc

PowerLoc is a hybrid of our ever popular ScissorLoc and PowerSleeper systems. The floor is a good selection for new and retrofit sports floor applications.



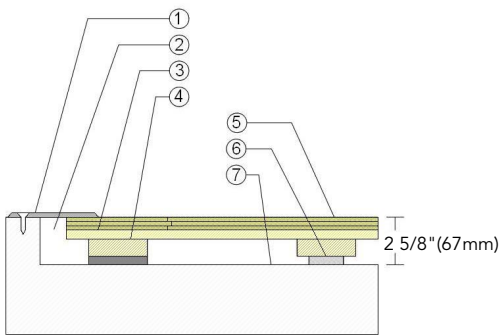
- 1. Infinity MFMA Maple
- 2. 1/2" x 5-1/2" (12mm x 140mm) Dimensional Pine
- 3. Pre-Engineered Plywood Sleeper
- 4. ECO Resilient Pad

## WALL BASE



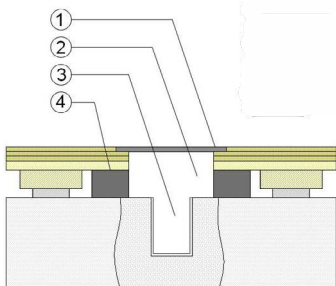
- 1. 3" x 4" (76mm x 101mm) Vent Cove Base
- 2. 1-1/2" (38mm) Min. Expansion Space
- 3. 1/2" x 5-1/2" (12mm x 140mm) Pine Subfloor
- 4. 1/2" (12mm) ECO Resilient Pad
- 5. Engineered Plywood Sleeper
- 6. 25/32" (20mm) MFMA Maple Flooring
- 7. Vapor Retarder

## THRESHOLD



- 1. 1/4" (6mm) Aluminum Threshold
- 2. 1-1/2" (38mm) Min. Expansion Space
- 3. 1/2" x 5-1/2" (12mm x 140mm) Pine Subfloor
- 4. Engineered Plywood Sleeper with Solid Blocking Attached
- 5. 25/32" (20mm) MFMA Maple Flooring
- 6. 1/2" (12mm) ECO Resilient Pad
- 7. Vapor Retarder

## EQUIPMENT



- 1. Floor Plate
- 2. 1-1/2" (38mm) Min. Expansion Space at all Inserts & Electrical Penetrations
- 3. Concrete Floor Penetration
- 4. Solid Blocking at Insert

Green Status and LEED Contributors



- FSC® Certified Maple - MR
- FSC® Certified Subfloor Components - MR
- Environmental Quality - EQ
- Regional Materials - MR

Resilience

1/2" (12mm) ECO Pad  
\*Other pad options available.

Slab Depression

• 25/32" (20mm) flooring  
-2 5/8" (67mm)

Optional PowerLoc Systems

Anchored PowerSleeper™  
Anchored PowerSleeper™ SE  
Anchored PowerLoc  
Anchored PowerLoc LP

Optional Protection System

PowerVent™ Airflow System

Subfloor Construction

Engineered Sleeper and Subfloor

System Type

Floating

Testing Laboratory Partners



It is the policy of Infinity Wood Floors to continuously improve its line of products. Therefore, Infinity Wood Floors reserves the right to change, modify or discontinue systems, specifications and accessories of all products at any time without notice or obligation to purchaser.



see us at  
**Sweets.com**



Description: POWERLOC

Resilience: 1/2" (12mm) ECO pads

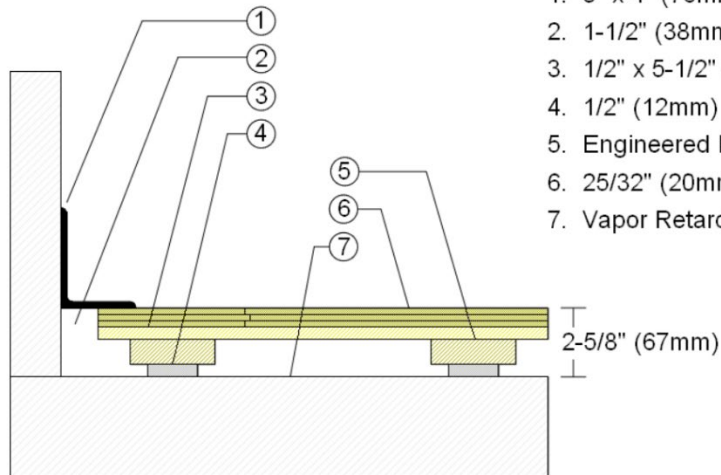
Drawn By: RR

Date: 1/1/23

Revisions

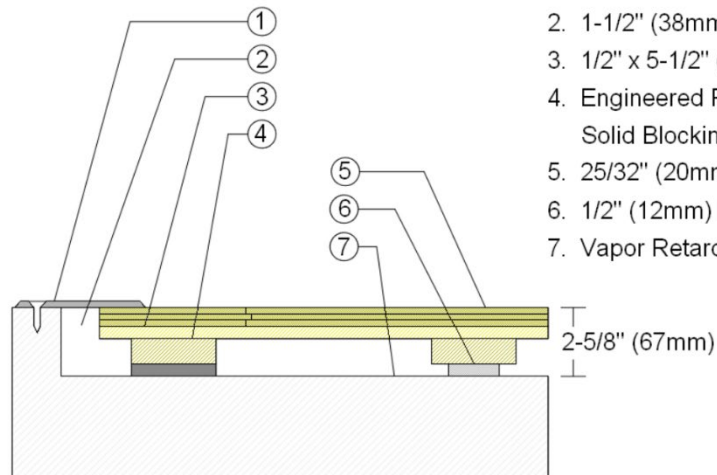
ID	Description	By	Date

### WALLBASE



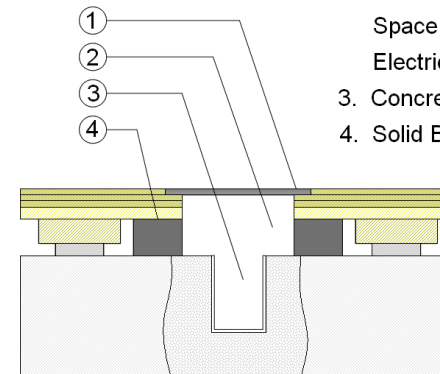
1. 3" x 4" (76mm x 101mm) Vent Cove Base
2. 1-1/2" (38mm) min. Expansion Space
3. 1/2" x 5-1/2" (12mm x 140mm) Pine Subfloor
4. 1/2" (12mm) ECO Resilient Pads
5. Engineered Plywood Sleeper
6. 25/32" (20mm) MFMA Maple Flooring
7. Vapor Retarder

### THRESHOLD



1. 1/4" (6mm) Aluminum Threshold
2. 1-1/2" (38mm) min. Expansion Space
3. 1/2" x 5-1/2" (12mm x 140mm) Pine Subfloor
4. Engineered Plywood Sleeper with Solid Blocking Attached
5. 25/32" (20mm) MFMA Maple Flooring
6. 1/2" (12mm) ECO Resilient Pad
7. Vapor Retarder

### EQUIPMENT



1. Floor Plate
2. 1-1/2" (38mm) min. Expansion Space at All Inserts and Electrical Penetrations
3. Concrete Floor Penetration
4. Solid Blocking at Insert



## Warranty and Disclaimer

Aacer Sport Flooring, an Infinity Wood Floors Company, Crandon, Wisconsin, hereby warrants the materials it has supplied to be free from manufacturing defects for a period of one (1) year. THIS WARRANTY IS IN LIEU OF AND EXCLUDES ALL OTHER WARRANTIES EXPRESSED OR IMPLIED INCLUDING ANY IMPLIED WARRANTIES OF MERCHANTABILITY OR FITNESS FOR A PARTICULAR PURPOSE.

This warranty is limited to the materials manufactured and supplied by Infinity/Aacer Flooring. THIS WARRANTY EXCLUDES ANY CONSEQUENTIAL OR INCIDENTAL DAMAGES and in the event of breach, Infinity/Aacer Flooring's sole liability and your exclusive remedies will be limited to repair or replacement of materials and components supplied by Infinity/Aacer Flooring and proven to be defective by the manufacturing process.

This warranty does not cover damage (in whole or in part) caused by fire, winds, floods, chemicals, other abuse, failure of owners, contractors, or suppliers to adhere to specifications, neglect, or precautions to provide adequate ventilation at times of high humidity, excessive dryness, as well as excessive moisture from humidity, spillage, migration through the substrate, wall, or any other source. This warranty also excludes any damage to materials due to ordinary wear and tear, faulty construction of the building, separation of concrete substrate, settlement of walls or of water-based materials used on the floor.

During the warranty period, the floor shall not be recoated without the approval of the flooring contractor.

The jobsite documentation forms by the flooring contractor shall become a part of the warranty and both the owner and flooring contractor shall retain record of said forms as a permanent reference for any abrogation.

Flooring contractor warrants the installation of the floor systems to be free from defects in materials and workmanship for a period of one (1) year.

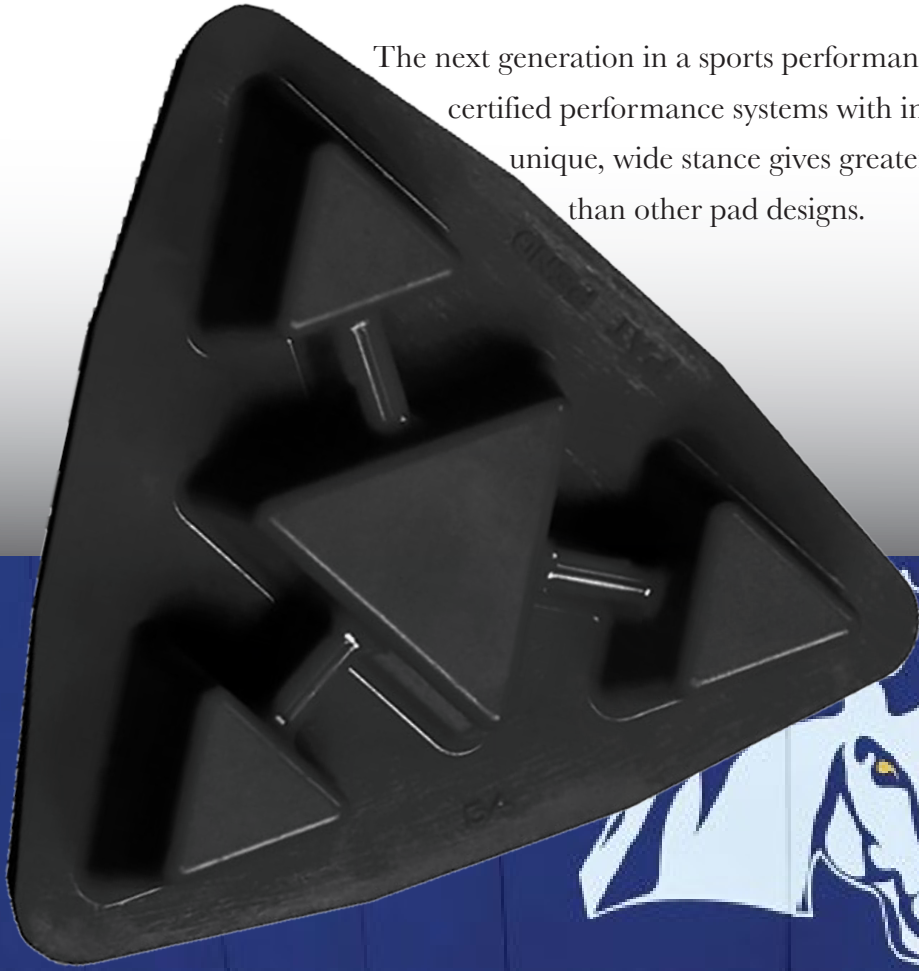
# TriPower™ Pad

ACCESSORY

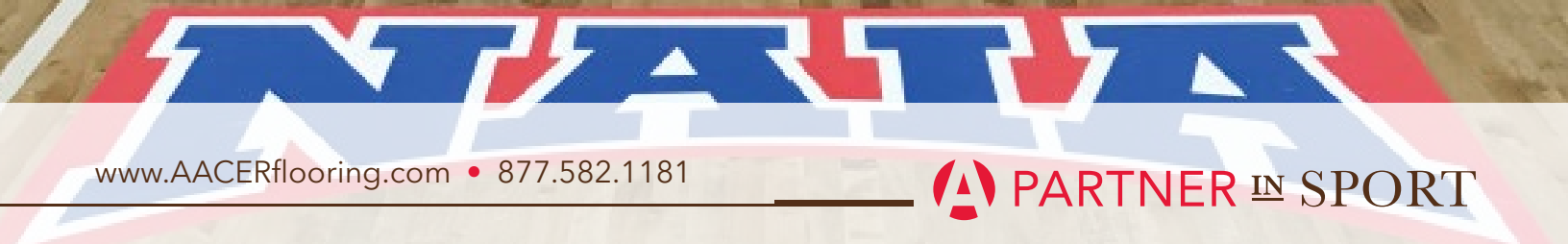


AACER™  
SPORTS FLOORING  
an Infinity Wood Floors Company

The next generation in a sports performance pad, Aacer's TriPower™ Pads provide certified performance systems with increased load handling. The TriPower™ Pad's unique, wide stance gives greater response, consistency and lower vibration than other pad designs.

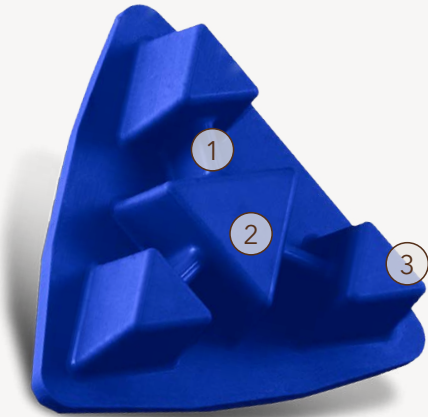


TOURNAMENT








# TriPower™ Pad

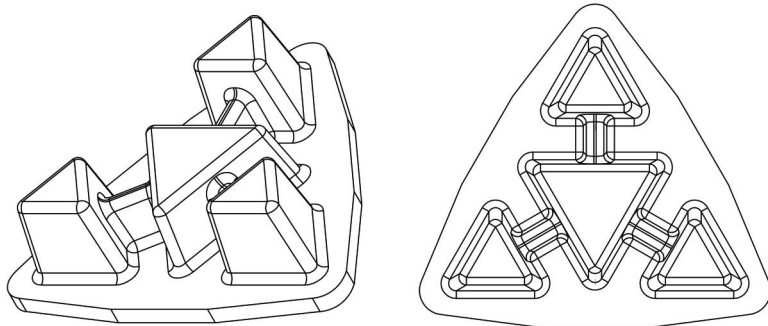
TriPower™ Pad offers superior shock absorption and vibration dampening. The unique blend of EPDM ensures stability and longevity required by high performance floors.



1. Structural Webs - Cross-Linked
  - a. Greater load carrying ability
  - b. Vibration attenuation
  - c. Increased uniformity and consistent response
2. Stage II Heavy-Duty Load Distribution
3. 3-point Surface Contact Shock Pads - Athletic Resilience

Composition	EPDM Rubber / Recyclable
Hardness	Shore A
ASTM Durometer	Black, 1/2" (12mm), 50D Red, 3/4" (19mm), 70D Black, 3/4" (19mm), 60D Blue, 3/4" (19mm), 50D
Triangular Footprint	3 Point Primary Surface Contact 1 Point Secondary Load Contact
ASTM D412 Tensile PSI	1810
ASTM D412 Elongation	648
Loading	Excellent
Performance Information	    

## DETAIL DRAWINGS



## AACER PAD OPTIONS



TriPower™ Black 1/2" (12mm) 50D    TriPower™ Red 3/4" (19mm) 70D    TriPower™ Black 3/4" (19mm) 60D    TriPower™ Blue 3/4" (19mm) 50D



ECO 1/4" (6mm), 1/2" (12mm), 3/4" (19mm)    AacerCush 3/8" (10mm)    Open Cell Foam 1/2" (12mm), 3/4" (19mm)    Performance Foam 1/4" (6mm), 1/2" (12mm), 3/4" (19mm)

U.S. Patent # #5,988,915

Aacer systems meet and exceed all 3rd party industry testing standards.

- ASTM 2137 low temperature brittleness · 3 min @ -40 - pass
- ASTM D395 compression set · 22 hours @ 70c set % -20

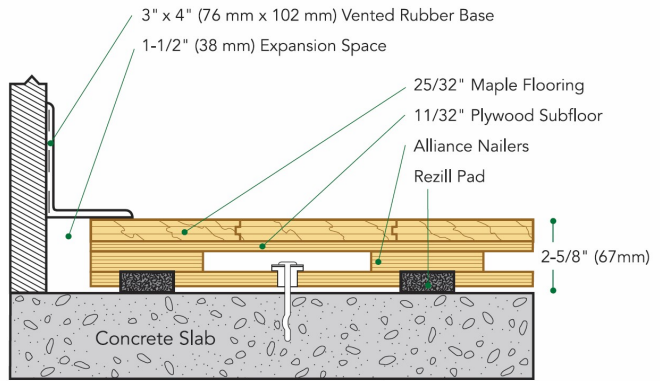
*It is the policy of Infinity Wood Floors to continuously improve its line of products. Therefore, Infinity Wood Floors reserves the right to change, modify or discontinue systems, specifications and accessories of all products at any time without notice or obligation to purchaser.*



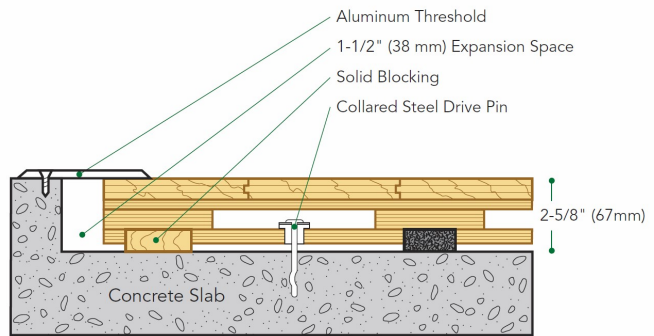
**CONNOR SPORTS**  
*Where Champions Play™*

# Alliance Panel

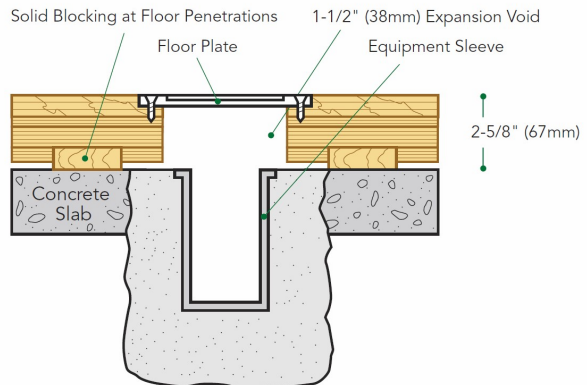
Wall Base Detail



Threshold Detail  
(Optional Accessory)



Equipment Detail  
(Optional Accessory)





# PERMAFLEX™

SPECIALTY HARDWOOD SYSTEM

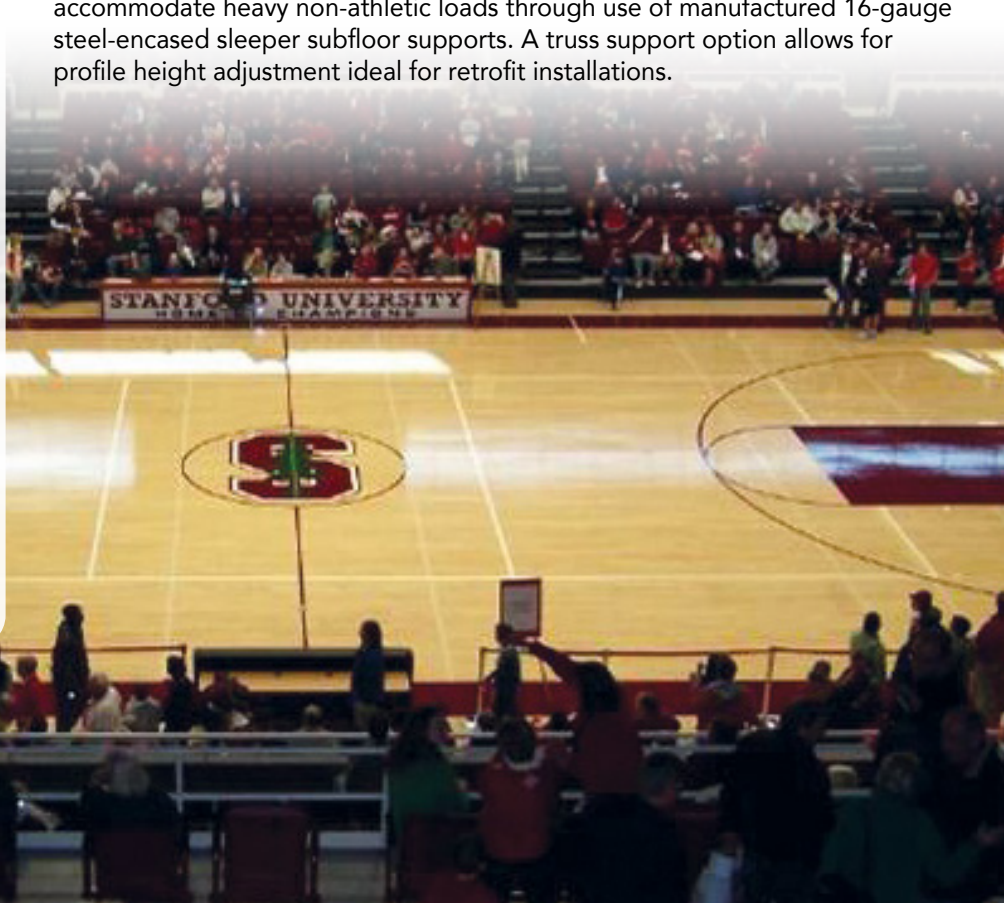
[connorsports.com](http://connorsports.com)



**CONNOR SPORTS**  
*Where Champions Play™*



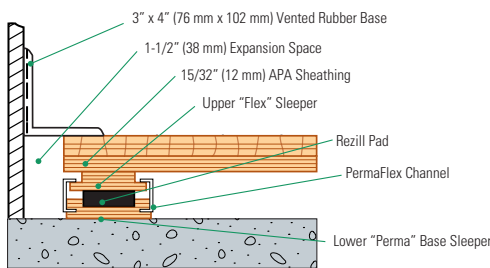
**CONNOR SPORTS**  
Where Champions Play™



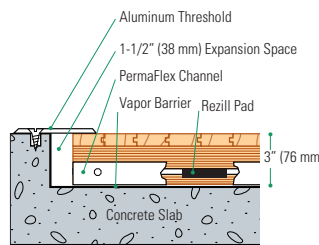
# PERMAFLEX™ SPECIALTY HARDWOOD SYSTEM

This unique subfloor design encapsulates Rezill™ pads between an upper flex sleeper and a lower base sleeper to extend the system's resilient life and accommodate heavy non-athletic loads through use of manufactured 16-gauge steel-encased sleeper subfloor supports. A truss support option allows for profile height adjustment ideal for retrofit installations.

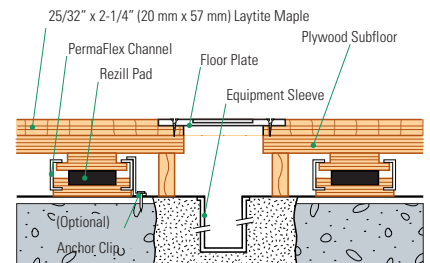
Wall Base Detail



Threshold Detail ( Optional Accessory )



Equipment Detail ( Optional Accessory )



Manufacturing:  
**ISO 14001:2004**  
CERTIFIED



**Recycled Contribution:**  
Includes components with recycled content



**Testing Laboratory:**  
United States Sports Surfacing Laboratory



**Certified Testing:**  
ISS Scientific Body Membership



**Green Status:**  
Managed Forests, Certification Available

Customer Service: 800.283.9522 | [info@connorsports.com](mailto:info@connorsports.com) | [connorsports.com/products](http://connorsports.com/products)

**Where Champions Play™**

**TARAFLEX**  
SPORTS FLOORING

