

BODY TISSUES

13. Twelve tissue types are diagrammed in Figure 3-6. Identify each tissue type by inserting the correct name in the blank below it on the diagram. Select different colors for the following structures and use them to color the coding circles and corresponding structures in the diagrams.

- Epithelial cells
- Nerve cells
- Muscle cells
- Matrix (Where found, matrix should be colored differently from the living cells of that tissue type. Be careful, this may not be as easy as it seems!)

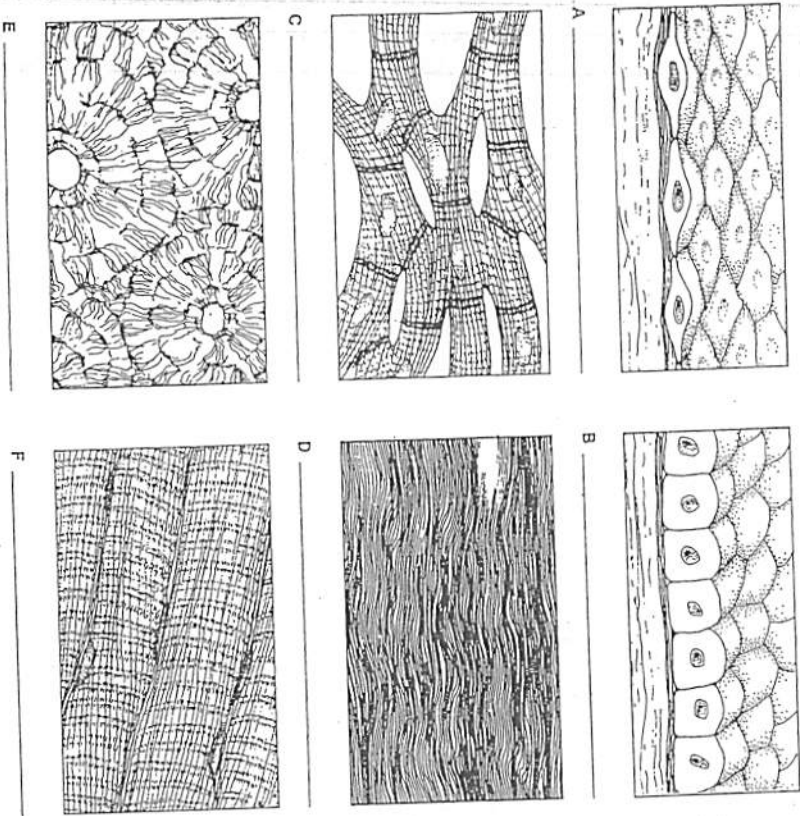


Figure 3-6, A-F

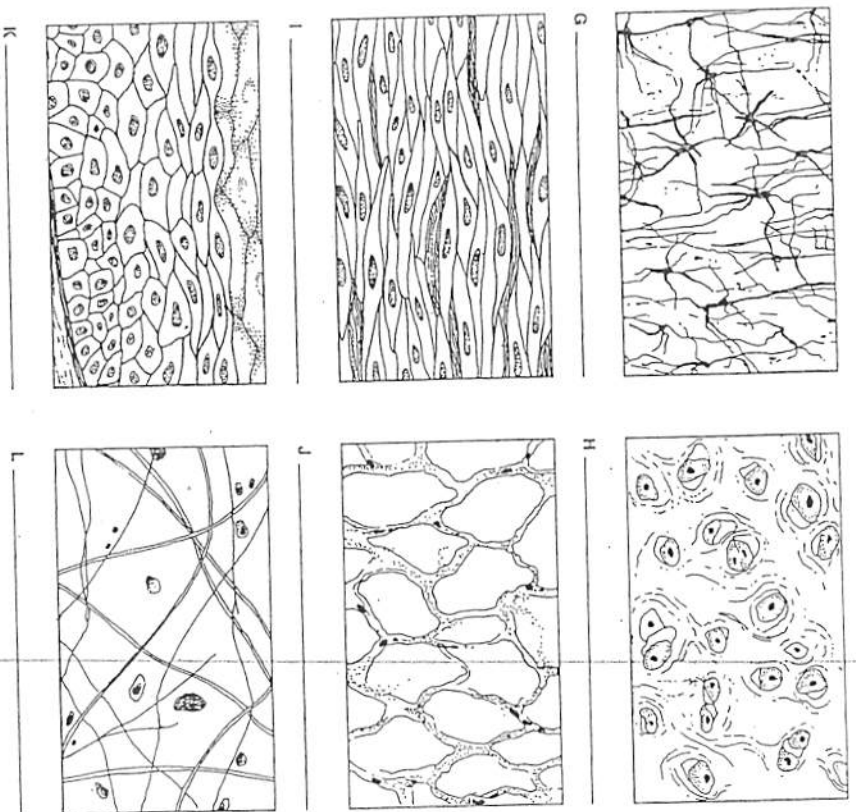


Figure 3-6, G-L

14. Describe briefly how the particular structure of a neuron relates to its function in the body.
